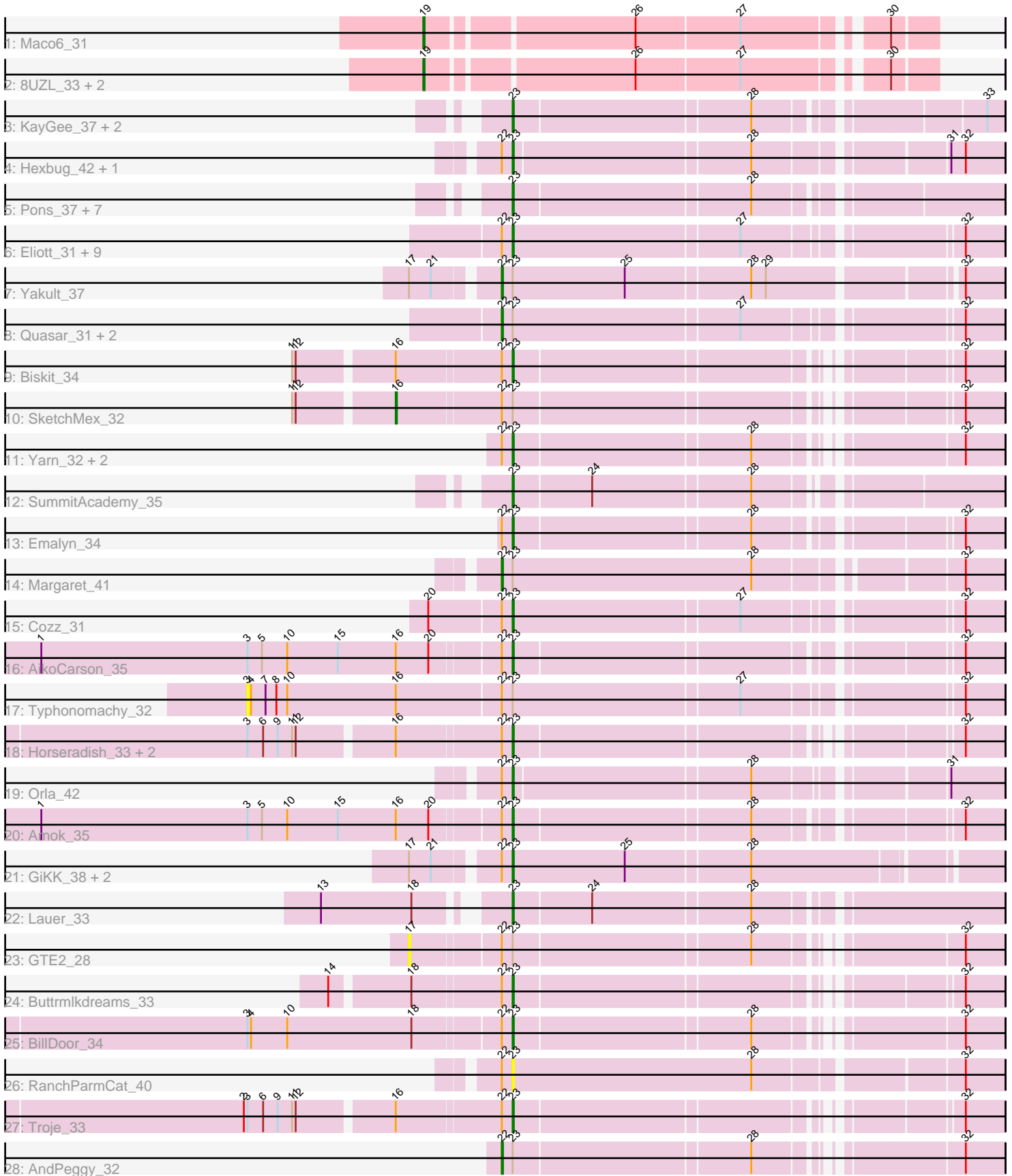


Pham 194038



Note: Tracks are now grouped by subcluster and scaled. Switching in subcluster is indicated by changes in track color. Track scale is now set by default to display the region 30 bp upstream of start 1 to 30 bp downstream of the last possible start. If this default region is judged to be packed too tightly with annotated starts, the track will be further scaled to only show that region of the ORF with annotated starts. This action will be indicated by adding "Zoomed" to the title. For starts, yellow indicates the location of called starts comprised solely of Glimmer/GeneMark auto-annotations, green indicates the location of called starts with at least 1 manual gene annotation.

Pham 194038 Report

This analysis was run 11/02/24 on database version 579.

Pham number 194038 has 57 members, 11 are drafts.

Phages represented in each track:

- Track 1 : Maco6_31
- Track 2 : 8UZL_33, FF47_33, Muddy_33
- Track 3 : KayGee_37, Elinal_39, Vine_38
- Track 4 : Hexbug_42, Nodigi_42
- Track 5 : Pons_37, BigChungus_35, CherryonLim_38, MAnor_37, PotPie_36, Mayweather_39, SheckWes_38, Feastonyeet_35
- Track 6 : Elliott_31, Agatha_31, PsychoKiller_31, MunkgeeRoachy_31, SweatNTears_33, Sopeopian_31, GoldHunter_32, Axym_31, Carsonalex_36, RedBaron_33
- Track 7 : Yakult_37
- Track 8 : Quasar_31, Nina_31, Burnsey_31
- Track 9 : Biskit_34
- Track 10 : SketchMex_32
- Track 11 : Yarn_32, SteamedHams_35, Tolls_35
- Track 12 : SummitAcademy_35
- Track 13 : Emalyn_34
- Track 14 : Margaret_41
- Track 15 : Cozz_31
- Track 16 : AikoCarson_35
- Track 17 : Typhonomachy_32
- Track 18 : Horseradish_33, Yummy_33, MScarn_34
- Track 19 : Orla_42
- Track 20 : Amok_35
- Track 21 : GiKK_38, Button_36, Jamzy_38
- Track 22 : Lauer_33
- Track 23 : GTE2_28
- Track 24 : Buttrmilkdreams_33
- Track 25 : BillDoor_34
- Track 26 : RanchParmCat_40
- Track 27 : Troje_33
- Track 28 : AndPeggy_32

Summary of Final Annotations (See graph section above for start numbers):

The start number called the most often in the published annotations is 23, it was called in 37 of the 46 non-draft genes in the pham.

Genes that call this "Most Annotated" start:

- Agatha_31, AikoCarson_35, Amok_35, Axym_31, BigChungus_35, BillDoor_34, Biskit_34, Button_36, Buttrmlkdreams_33, Carsonalex_36, CherryonLim_38, Cozz_31, Elinal_39, Elliott_31, Emalyn_34, Feastonyeet_35, GiKK_38, GoldHunter_32, Hexbug_42, Horseradish_33, Jamzy_38, KayGee_37, Lauer_33, MAnor_37, MScarn_34, Mayweather_39, MunkgeeRoachy_31, Nodigi_42, Orla_42, Pons_37, PotPie_36, PsychoKiller_31, RanchParmCat_40, RedBaron_33, SheckWes_38, Sopespian_31, SteamedHams_35, SummitAcademy_35, SweatNTears_33, Tolls_35, Troje_33, Vine_38, Yarn_32, Yummy_33,

Genes that have the "Most Annotated" start but do not call it:

- AndPeggy_32, Burnsey_31, GTE2_28, Margaret_41, Nina_31, Quasar_31, SketchMex_32, Typhonomachy_32, Yakult_37,

Genes that do not have the "Most Annotated" start:

- 8UZL_33, FF47_33, Maco6_31, Muddy_33,

Summary by start number:

Start 3:

- Found in 8 of 57 (14.0%) of genes in pham
- No Manual Annotations of this start.
- Called 12.5% of time when present
- Phage (with cluster) where this start called: Typhonomachy_32 (CT),

Start 16:

- Found in 9 of 57 (15.8%) of genes in pham
- Manual Annotations of this start: 1 of 46
- Called 11.1% of time when present
- Phage (with cluster) where this start called: SketchMex_32 (CT),

Start 17:

- Found in 5 of 57 (8.8%) of genes in pham
- No Manual Annotations of this start.
- Called 20.0% of time when present
- Phage (with cluster) where this start called: GTE2_28 (CT),

Start 19:

- Found in 4 of 57 (7.0%) of genes in pham
- Manual Annotations of this start: 2 of 46
- Called 100.0% of time when present
- Phage (with cluster) where this start called: 8UZL_33 (AB), FF47_33 (AB), Maco6_31 (AB), Muddy_33 (AB),

Start 22:

- Found in 40 of 57 (70.2%) of genes in pham
- Manual Annotations of this start: 6 of 46
- Called 15.0% of time when present
- Phage (with cluster) where this start called: AndPeggy_32 (CT), Burnsey_31 (CT), Margaret_41 (CT), Nina_31 (CT), Quasar_31 (CT), Yakult_37 (CT),

Start 23:

- Found in 53 of 57 (93.0%) of genes in pham
- Manual Annotations of this start: 37 of 46
- Called 83.0% of time when present
- Phage (with cluster) where this start called: Agatha_31 (CT), AikoCarson_35 (CT), Amok_35 (CT), Axym_31 (CT), BigChungus_35 (CT), BillDoor_34 (CT), Biskit_34 (CT), Button_36 (CT), Buttrmilkdreams_33 (CT), Carsonalex_36 (CT), CherryonLim_38 (CT), Cozz_31 (CT), Elinal_39 (CT), Elliott_31 (CT), Emalyn_34 (CT), Feastonyeet_35 (CT), GiKK_38 (CT), GoldHunter_32 (CT), Hexbug_42 (CT), Horseradish_33 (CT), Jamzy_38 (CT), KayGee_37 (CT), Lauer_33 (CT), MAnor_37 (CT), MScarn_34 (CT), Mayweather_39 (CT), MunkgeeRoachy_31 (CT), Nodigi_42 (CT), Orla_42 (CT), Pons_37 (CT), PotPie_36 (CT), PsychoKiller_31 (CT), RanchParmCat_40 (CT), RedBaron_33 (CT), SheckWes_38 (CT), Sopespian_31 (CT), SteamedHams_35 (CT), SummitAcademy_35 (CT), SweatNTears_33 (CT), Tolls_35 (CT), Troje_33 (CT), Vine_38 (CT), Yarn_32 (CT), Yummy_33 (CT),

Summary by clusters:

There are 2 clusters represented in this pham: AB, CT,

Info for manual annotations of cluster AB:

- Start number 19 was manually annotated 2 times for cluster AB.

Info for manual annotations of cluster CT:

- Start number 16 was manually annotated 1 time for cluster CT.
- Start number 22 was manually annotated 6 times for cluster CT.
- Start number 23 was manually annotated 37 times for cluster CT.

Gene Information:

Gene: 8UZL_33 Start: 26454, Stop: 26834, Start Num: 19

Candidate Starts for 8UZL_33:

(Start: 19 @26454 has 2 MA's), (26, 26613), (27, 26697), (30, 26799),

Gene: Agatha_31 Start: 25290, Stop: 24916, Start Num: 23

Candidate Starts for Agatha_31:

(Start: 22 @25299 has 6 MA's), (Start: 23 @25290 has 37 MA's), (27, 25107), (32, 24948),

Gene: AikoCarson_35 Start: 26407, Stop: 26042, Start Num: 23

Candidate Starts for AikoCarson_35:

(1, 26791), (3, 26620), (5, 26608), (10, 26587), (15, 26545), (Start: 16 @26497 has 1 MA's), (20, 26470), (Start: 22 @26416 has 6 MA's), (Start: 23 @26407 has 37 MA's), (32, 26074),

Gene: Amok_35 Start: 26431, Stop: 26066, Start Num: 23

Candidate Starts for Amok_35:

(1, 26815), (3, 26644), (5, 26632), (10, 26611), (15, 26569), (Start: 16 @26521 has 1 MA's), (20, 26494), (Start: 22 @26440 has 6 MA's), (Start: 23 @26431 has 37 MA's), (28, 26242), (32, 26098),

Gene: AndPeggy_32 Start: 25848, Stop: 25477, Start Num: 22

Candidate Starts for AndPeggy_32:

(Start: 22 @25848 has 6 MA's), (Start: 23 @25839 has 37 MA's), (28, 25650), (32, 25509),

Gene: Axym_31 Start: 25269, Stop: 24895, Start Num: 23

Candidate Starts for Axym_31:

(Start: 22 @25278 has 6 MA's), (Start: 23 @25269 has 37 MA's), (27, 25086), (32, 24927),

Gene: BigChungus_35 Start: 27608, Stop: 27240, Start Num: 23

Candidate Starts for BigChungus_35:

(Start: 23 @27608 has 37 MA's), (28, 27419),

Gene: BillDoor_34 Start: 25517, Stop: 25155, Start Num: 23

Candidate Starts for BillDoor_34:

(3, 25727), (4, 25724), (10, 25694), (18, 25592), (Start: 22 @25526 has 6 MA's), (Start: 23 @25517 has 37 MA's), (28, 25328), (32, 25187),

Gene: Biskit_34 Start: 25615, Stop: 25259, Start Num: 23

Candidate Starts for Biskit_34:

(11, 25780), (12, 25777), (Start: 16 @25705 has 1 MA's), (Start: 22 @25624 has 6 MA's), (Start: 23 @25615 has 37 MA's), (32, 25291),

Gene: Burnsey_31 Start: 25291, Stop: 24908, Start Num: 22

Candidate Starts for Burnsey_31:

(Start: 22 @25291 has 6 MA's), (Start: 23 @25282 has 37 MA's), (27, 25099), (32, 24940),

Gene: Button_36 Start: 26534, Stop: 26151, Start Num: 23

Candidate Starts for Button_36:

(17, 26606), (21, 26588), (Start: 22 @26543 has 6 MA's), (Start: 23 @26534 has 37 MA's), (25, 26441), (28, 26342),

Gene: Buttrmlkdreams_33 Start: 25596, Stop: 25240, Start Num: 23

Candidate Starts for Buttrmlkdreams_33:

(14, 25734), (18, 25674), (Start: 22 @25605 has 6 MA's), (Start: 23 @25596 has 37 MA's), (32, 25272),

Gene: Carsonalex_36 Start: 24592, Stop: 24966, Start Num: 23

Candidate Starts for Carsonalex_36:

(Start: 22 @24583 has 6 MA's), (Start: 23 @24592 has 37 MA's), (27, 24775), (32, 24934),

Gene: CherryonLim_38 Start: 28748, Stop: 28377, Start Num: 23

Candidate Starts for CherryonLim_38:

(Start: 23 @28748 has 37 MA's), (28, 28559),

Gene: Cozz_31 Start: 25271, Stop: 24897, Start Num: 23

Candidate Starts for Cozz_31:

(20, 25337), (Start: 22 @25280 has 6 MA's), (Start: 23 @25271 has 37 MA's), (27, 25088), (32, 24929),

Gene: Elinal_39 Start: 27986, Stop: 27618, Start Num: 23

Candidate Starts for Elinal_39:

(Start: 23 @27986 has 37 MA's), (28, 27797), (33, 27632),

Gene: Elliott_31 Start: 25290, Stop: 24916, Start Num: 23

Candidate Starts for Elliott_31:

(Start: 22 @25299 has 6 MA's), (Start: 23 @25290 has 37 MA's), (27, 25107), (32, 24948),

Gene: Emalyn_34 Start: 25600, Stop: 25235, Start Num: 23

Candidate Starts for Emalyn_34:

(Start: 22 @25609 has 6 MA's), (Start: 23 @25600 has 37 MA's), (28, 25411), (32, 25267),

Gene: FF47_33 Start: 26381, Stop: 26761, Start Num: 19

Candidate Starts for FF47_33:

(Start: 19 @26381 has 2 MA's), (26, 26540), (27, 26624), (30, 26726),

Gene: Feastonyeet_35 Start: 27608, Stop: 27240, Start Num: 23

Candidate Starts for Feastonyeet_35:

(Start: 23 @27608 has 37 MA's), (28, 27419),

Gene: GTE2_28 Start: 25921, Stop: 25481, Start Num: 17

Candidate Starts for GTE2_28:

(17, 25921), (Start: 22 @25852 has 6 MA's), (Start: 23 @25843 has 37 MA's), (28, 25654), (32, 25513),

Gene: GiKK_38 Start: 26864, Stop: 26481, Start Num: 23

Candidate Starts for GiKK_38:

(17, 26936), (21, 26918), (Start: 22 @26873 has 6 MA's), (Start: 23 @26864 has 37 MA's), (25, 26771), (28, 26672),

Gene: GoldHunter_32 Start: 25291, Stop: 24917, Start Num: 23

Candidate Starts for GoldHunter_32:

(Start: 22 @25300 has 6 MA's), (Start: 23 @25291 has 37 MA's), (27, 25108), (32, 24949),

Gene: Hexbug_42 Start: 28965, Stop: 28591, Start Num: 23

Candidate Starts for Hexbug_42:

(Start: 22 @28974 has 6 MA's), (Start: 23 @28965 has 37 MA's), (28, 28776), (31, 28635), (32, 28623),

Gene: Horseradish_33 Start: 25125, Stop: 24769, Start Num: 23

Candidate Starts for Horseradish_33:

(3, 25326), (6, 25314), (9, 25302), (11, 25290), (12, 25287), (Start: 16 @25215 has 1 MA's), (Start: 22 @25134 has 6 MA's), (Start: 23 @25125 has 37 MA's), (32, 24801),

Gene: Jamzy_38 Start: 26847, Stop: 26464, Start Num: 23

Candidate Starts for Jamzy_38:

(17, 26919), (21, 26901), (Start: 22 @26856 has 6 MA's), (Start: 23 @26847 has 37 MA's), (25, 26754), (28, 26655),

Gene: KayGee_37 Start: 27986, Stop: 27618, Start Num: 23

Candidate Starts for KayGee_37:

(Start: 23 @27986 has 37 MA's), (28, 27797), (33, 27632),

Gene: Lauer_33 Start: 28814, Stop: 28440, Start Num: 23

Candidate Starts for Lauer_33:

(13, 28946), (18, 28871), (Start: 23 @28814 has 37 MA's), (24, 28751), (28, 28625),

Gene: MAnor_37 Start: 28382, Stop: 28011, Start Num: 23

Candidate Starts for MAnor_37:

(Start: 23 @28382 has 37 MA's), (28, 28193),

Gene: MScarn_34 Start: 25265, Stop: 24909, Start Num: 23

Candidate Starts for MScarn_34:

(3, 25466), (6, 25454), (9, 25442), (11, 25430), (12, 25427), (Start: 16 @25355 has 1 MA's), (Start: 22 @25274 has 6 MA's), (Start: 23 @25265 has 37 MA's), (32, 24941),

Gene: Maco6_31 Start: 25722, Stop: 26102, Start Num: 19

Candidate Starts for Maco6_31:

(Start: 19 @25722 has 2 MA's), (26, 25881), (27, 25965), (30, 26067),

Gene: Margaret_41 Start: 27905, Stop: 27516, Start Num: 22

Candidate Starts for Margaret_41:

(Start: 22 @27905 has 6 MA's), (Start: 23 @27896 has 37 MA's), (28, 27698), (32, 27548),

Gene: Mayweather_39 Start: 28607, Stop: 28236, Start Num: 23

Candidate Starts for Mayweather_39:

(Start: 23 @28607 has 37 MA's), (28, 28418),

Gene: Muddy_33 Start: 26662, Stop: 27048, Start Num: 19

Candidate Starts for Muddy_33:

(Start: 19 @26662 has 2 MA's), (26, 26827), (27, 26911), (30, 27013),

Gene: MunkgeeRoachy_31 Start: 25145, Stop: 24774, Start Num: 23

Candidate Starts for MunkgeeRoachy_31:

(Start: 22 @25154 has 6 MA's), (Start: 23 @25145 has 37 MA's), (27, 24965), (32, 24806),

Gene: Nina_31 Start: 25816, Stop: 25433, Start Num: 22

Candidate Starts for Nina_31:

(Start: 22 @25816 has 6 MA's), (Start: 23 @25807 has 37 MA's), (27, 25624), (32, 25465),

Gene: Nodigi_42 Start: 28954, Stop: 28577, Start Num: 23

Candidate Starts for Nodigi_42:

(Start: 22 @28963 has 6 MA's), (Start: 23 @28954 has 37 MA's), (28, 28765), (31, 28621), (32, 28609),

Gene: Orla_42 Start: 28927, Stop: 28556, Start Num: 23

Candidate Starts for Orla_42:

(Start: 22 @28936 has 6 MA's), (Start: 23 @28927 has 37 MA's), (28, 28738), (31, 28600),

Gene: Pons_37 Start: 27958, Stop: 27587, Start Num: 23

Candidate Starts for Pons_37:

(Start: 23 @27958 has 37 MA's), (28, 27769),

Gene: PotPie_36 Start: 28899, Stop: 28531, Start Num: 23

Candidate Starts for PotPie_36:

(Start: 23 @28899 has 37 MA's), (28, 28710),

Gene: PsychoKiller_31 Start: 25290, Stop: 24916, Start Num: 23

Candidate Starts for PsychoKiller_31:

(Start: 22 @25299 has 6 MA's), (Start: 23 @25290 has 37 MA's), (27, 25107), (32, 24948),

Gene: Quasar_31 Start: 25902, Stop: 25519, Start Num: 22

Candidate Starts for Quasar_31:

(Start: 22 @25902 has 6 MA's), (Start: 23 @25893 has 37 MA's), (27, 25710), (32, 25551),

Gene: RanchParmCat_40 Start: 28046, Stop: 27660, Start Num: 23

Candidate Starts for RanchParmCat_40:

(Start: 22 @28055 has 6 MA's), (Start: 23 @28046 has 37 MA's), (28, 27848), (32, 27692),

Gene: RedBaron_33 Start: 25526, Stop: 25152, Start Num: 23

Candidate Starts for RedBaron_33:

(Start: 22 @25535 has 6 MA's), (Start: 23 @25526 has 37 MA's), (27, 25343), (32, 25184),

Gene: SheckWes_38 Start: 27479, Stop: 27111, Start Num: 23

Candidate Starts for SheckWes_38:

(Start: 23 @27479 has 37 MA's), (28, 27290),

Gene: SketchMex_32 Start: 25705, Stop: 25259, Start Num: 16

Candidate Starts for SketchMex_32:

(11, 25780), (12, 25777), (Start: 16 @25705 has 1 MA's), (Start: 22 @25624 has 6 MA's), (Start: 23 @25615 has 37 MA's), (32, 25291),

Gene: Sopespian_31 Start: 25291, Stop: 24917, Start Num: 23

Candidate Starts for Sopespian_31:

(Start: 22 @25300 has 6 MA's), (Start: 23 @25291 has 37 MA's), (27, 25108), (32, 24949),

Gene: SteamedHams_35 Start: 25985, Stop: 25623, Start Num: 23

Candidate Starts for SteamedHams_35:

(Start: 22 @25994 has 6 MA's), (Start: 23 @25985 has 37 MA's), (28, 25796), (32, 25655),

Gene: SummitAcademy_35 Start: 27528, Stop: 27160, Start Num: 23

Candidate Starts for SummitAcademy_35:

(Start: 23 @27528 has 37 MA's), (24, 27465), (28, 27339),

Gene: SweatNTears_33 Start: 25188, Stop: 24814, Start Num: 23

Candidate Starts for SweatNTears_33:

(Start: 22 @25197 has 6 MA's), (Start: 23 @25188 has 37 MA's), (27, 25005), (32, 24846),

Gene: Tolls_35 Start: 26084, Stop: 25722, Start Num: 23

Candidate Starts for Tolls_35:

(Start: 22 @26093 has 6 MA's), (Start: 23 @26084 has 37 MA's), (28, 25895), (32, 25754),

Gene: Troje_33 Start: 25622, Stop: 25266, Start Num: 23

Candidate Starts for Troje_33:

(2, 25826), (3, 25823), (6, 25811), (9, 25799), (11, 25787), (12, 25784), (Start: 16 @25712 has 1 MA's), (Start: 22 @25631 has 6 MA's), (Start: 23 @25622 has 37 MA's), (32, 25298),

Gene: Typhonomachy_32 Start: 25518, Stop: 24928, Start Num: 3

Candidate Starts for Typhonomachy_32:

(3, 25518), (4, 25515), (7, 25503), (8, 25494), (10, 25485), (Start: 16 @25395 has 1 MA's), (Start: 22 @25311 has 6 MA's), (Start: 23 @25302 has 37 MA's), (27, 25119), (32, 24960),

Gene: Vine_38 Start: 28260, Stop: 27898, Start Num: 23

Candidate Starts for Vine_38:

(Start: 23 @28260 has 37 MA's), (28, 28071), (33, 27912),

Gene: Yakult_37 Start: 27033, Stop: 26644, Start Num: 22

Candidate Starts for Yakult_37:

(17, 27096), (21, 27078), (Start: 22 @27033 has 6 MA's), (Start: 23 @27024 has 37 MA's), (25, 26931), (28, 26832), (29, 26820), (32, 26676),

Gene: Yarn_32 Start: 25844, Stop: 25482, Start Num: 23

Candidate Starts for Yarn_32:

(Start: 22 @25853 has 6 MA's), (Start: 23 @25844 has 37 MA's), (28, 25655), (32, 25514),

Gene: Yummy_33 Start: 25239, Stop: 24883, Start Num: 23

Candidate Starts for Yummy_33:

(3, 25440), (6, 25428), (9, 25416), (11, 25404), (12, 25401), (Start: 16 @25329 has 1 MA's), (Start: 22 @25248 has 6 MA's), (Start: 23 @25239 has 37 MA's), (32, 24915),