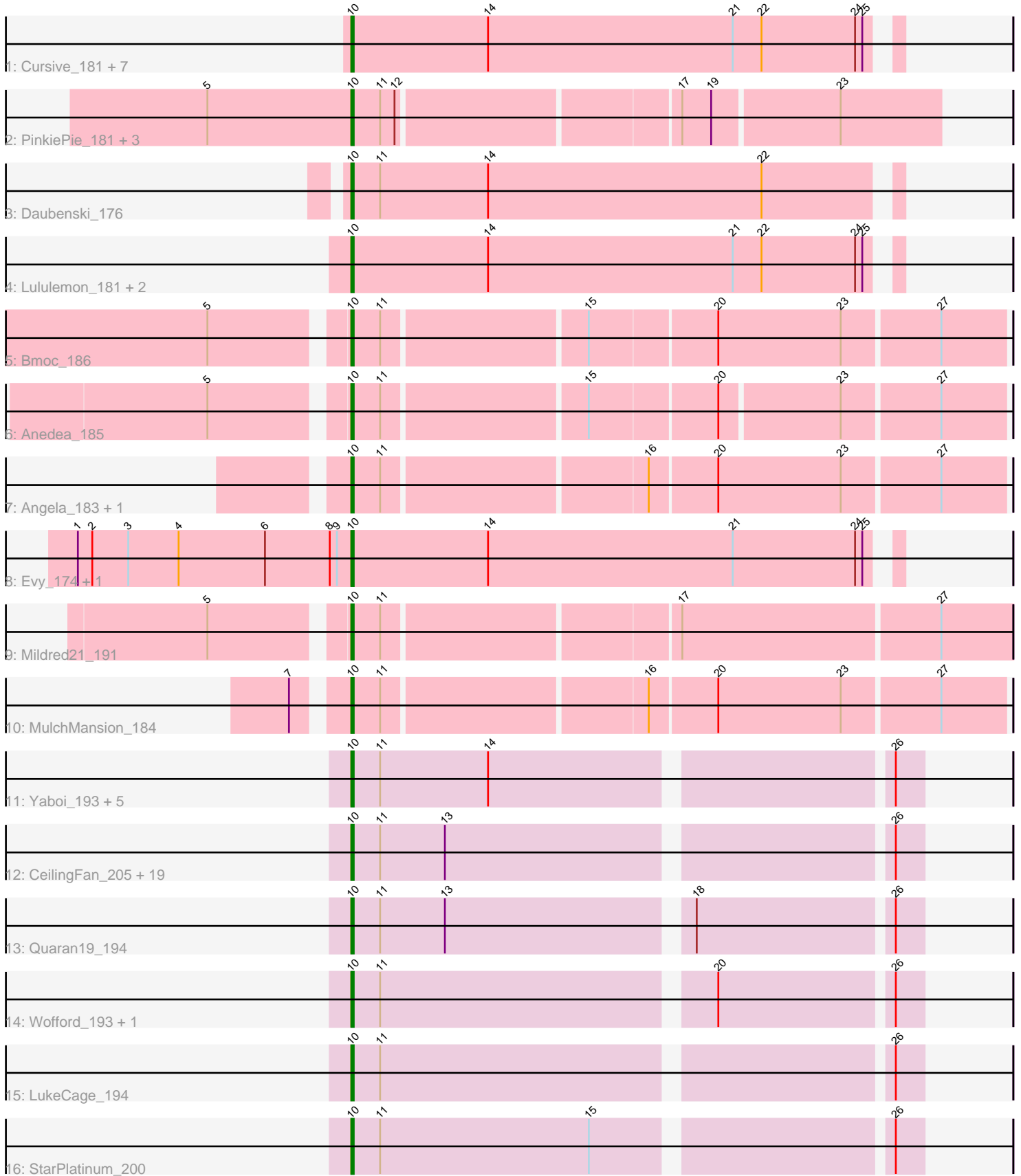


Pham 194056



Note: Tracks are now grouped by subcluster and scaled. Switching in subcluster is indicated by changes in track color. Track scale is now set by default to display the region 30 bp upstream of start 1 to 30 bp downstream of the last possible start. If this default region is judged to be packed too tightly with annotated starts, the track will be further scaled to only show that region of the ORF with annotated starts. This action will be indicated by adding "Zoomed" to the title. For starts, yellow indicates the location of called starts comprised solely of Glimmer/GeneMark auto-annotations, green indicates the location of called starts with at least 1 manual gene annotation.

Pham 194056 Report

This analysis was run 11/02/24 on database version 579.

Pham number 194056 has 55 members, 4 are drafts.

Phages represented in each track:

- Track 1 : Cursive_181, Samisti12_185, Pepperwood_182, Tribute_180, Leo04_184, Scheme_187, Sushi23_183, Peebs_180
- Track 2 : PinkiePie_181, Liandry_181, Bartholomune_181, Squillium_184
- Track 3 : Daubenski_176
- Track 4 : Lululemon_181, PacManQ_181, Cross_182
- Track 5 : Bmoc_186
- Track 6 : Anedea_185
- Track 7 : Angela_183, LilMartin_181
- Track 8 : Evy_174, Targaryen_182
- Track 9 : Mildred21_191
- Track 10 : MulchMansion_184
- Track 11 : Yaboi_193, Enygma_199, Sollertia_190, Genie2_189, BoomerJR_189, Stanimal_189
- Track 12 : CeilingFan_205, Mugiwara_202, Gibbi_202, Battuta_192, JimJam_201, Spelly_197, Amabiko_198, PumpkinSpice_196, KentuckyRacer_200, Karimac_194, TomSawyer_199, Wipeout_186, Jollison_191, Bordeaux_193, SaltySpittoon_193, Birchlyn_193, IchabodCrane_190, Spilled_200, MindFlayer_187, Starbow_192
- Track 13 : Quarant19_194
- Track 14 : Wofford_193, Elmer_200
- Track 15 : LukeCage_194
- Track 16 : StarPlatinum_200

Summary of Final Annotations (See graph section above for start numbers):

The start number called the most often in the published annotations is 10, it was called in 51 of the 51 non-draft genes in the pham.

Genes that call this "Most Annotated" start:

- Amabiko_198, Anedea_185, Angela_183, Bartholomune_181, Battuta_192, Birchlyn_193, Bmoc_186, BoomerJR_189, Bordeaux_193, CeilingFan_205, Cross_182, Cursive_181, Daubenski_176, Elmer_200, Enygma_199, Evy_174, Genie2_189, Gibbi_202, IchabodCrane_190, JimJam_201, Jollison_191, Karimac_194, KentuckyRacer_200, Leo04_184, Liandry_181, LilMartin_181, LukeCage_194, Lululemon_181, Mildred21_191, MindFlayer_187, Mugiwara_202,

MulchMansion_184, PacManQ_181, Peebs_180, Pepperwood_182, PinkiePie_181, PumpkinSpice_196, Quaran19_194, SaltySpittoon_193, Samisti12_185, Scheme_187, Sollertia_190, Spelly_197, Spilled_200, Squillium_184, Stanimal_189, StarPlatinum_200, Starbow_192, Sushi23_183, Targaryen_182, TomSawyer_199, Tribute_180, Wipeout_186, Wofford_193, Yaboi_193,

Genes that have the "Most Annotated" start but do not call it:

-

Genes that do not have the "Most Annotated" start:

-

Summary by start number:

Start 10:

- Found in 55 of 55 (100.0%) of genes in pham
- Manual Annotations of this start: 51 of 51
- Called 100.0% of time when present
- Phage (with cluster) where this start called: Amabiko_198 (BE2), Anedea_185 (BE1), Angela_183 (BE1), Bartholomune_181 (BE1), Battuta_192 (BE2), Birchlyn_193 (BE2), Bmoc_186 (BE1), BoomerJR_189 (BE2), Bordeaux_193 (BE2), CeilingFan_205 (BE2), Cross_182 (BE1), Cursive_181 (BE1), Daubenski_176 (BE1), Elmer_200 (BE2), Enygma_199 (BE2), Evy_174 (BE1), Genie2_189 (BE2), Gibbi_202 (BE2), IchabodCrane_190 (BE2), JimJam_201 (BE2), Jollison_191 (BE2), Karimac_194 (BE2), KentuckyRacer_200 (BE2), Leo04_184 (BE1), Liandry_181 (BE1), LilMartin_181 (BE1), LukeCage_194 (BE2), Lululemon_181 (BE1), Mildred21_191 (BE1), MindFlayer_187 (BE2), Mugiwara_202 (BE2), MulchMansion_184 (BE1), PacManQ_181 (BE1), Peebs_180 (BE1), Pepperwood_182 (BE1), PinkiePie_181 (BE1), PumpkinSpice_196 (BE2), Quaran19_194 (BE2), SaltySpittoon_193 (BE2), Samisti12_185 (BE1), Scheme_187 (BE1), Sollertia_190 (BE2), Spelly_197 (BE2), Spilled_200 (BE2), Squillium_184 (BE1), Stanimal_189 (BE2), StarPlatinum_200 (BE2), Starbow_192 (BE2), Sushi23_183 (BE1), Targaryen_182 (BE1), TomSawyer_199 (BE2), Tribute_180 (BE1), Wipeout_186 (BE2), Wofford_193 (BE2), Yaboi_193 (BE2),

Summary by clusters:

There are 2 clusters represented in this pham: BE2, BE1,

Info for manual annotations of cluster BE1:

- Start number 10 was manually annotated 23 times for cluster BE1.

Info for manual annotations of cluster BE2:

- Start number 10 was manually annotated 28 times for cluster BE2.

Gene Information:

Gene: Amabiko_198 Start: 98341, Stop: 98565, Start Num: 10

Candidate Starts for Amabiko_198:

(Start: 10 @98341 has 51 MA's), (11, 98353), (13, 98380), (26, 98554),

Gene: Anedea_185 Start: 96500, Stop: 96757, Start Num: 10
Candidate Starts for Anedea_185:
(5, 96449), (Start: 10 @96500 has 51 MA's), (11, 96512), (15, 96593), (20, 96644), (23, 96692), (27, 96731),

Gene: Angela_183 Start: 96479, Stop: 96739, Start Num: 10
Candidate Starts for Angela_183:
(Start: 10 @96479 has 51 MA's), (11, 96491), (16, 96596), (20, 96623), (23, 96674), (27, 96713),

Gene: Bartholomune_181 Start: 96007, Stop: 96240, Start Num: 10
Candidate Starts for Bartholomune_181:
(5, 95947), (Start: 10 @96007 has 51 MA's), (11, 96019), (12, 96025), (17, 96136), (19, 96148), (23, 96199),

Gene: Battuta_192 Start: 97657, Stop: 97881, Start Num: 10
Candidate Starts for Battuta_192:
(Start: 10 @97657 has 51 MA's), (11, 97669), (13, 97696), (26, 97870),

Gene: Birchlyn_193 Start: 95589, Stop: 95813, Start Num: 10
Candidate Starts for Birchlyn_193:
(Start: 10 @95589 has 51 MA's), (11, 95601), (13, 95628), (26, 95802),

Gene: Bmoc_186 Start: 97251, Stop: 97511, Start Num: 10
Candidate Starts for Bmoc_186:
(5, 97200), (Start: 10 @97251 has 51 MA's), (11, 97263), (15, 97344), (20, 97395), (23, 97446), (27, 97485),

Gene: BoomerJR_189 Start: 97633, Stop: 97857, Start Num: 10
Candidate Starts for BoomerJR_189:
(Start: 10 @97633 has 51 MA's), (11, 97645), (14, 97690), (26, 97846),

Gene: Bordeaux_193 Start: 98240, Stop: 98464, Start Num: 10
Candidate Starts for Bordeaux_193:
(Start: 10 @98240 has 51 MA's), (11, 98252), (13, 98279), (26, 98453),

Gene: CeilingFan_205 Start: 99034, Stop: 99258, Start Num: 10
Candidate Starts for CeilingFan_205:
(Start: 10 @99034 has 51 MA's), (11, 99046), (13, 99073), (26, 99247),

Gene: Cross_182 Start: 97872, Stop: 98093, Start Num: 10
Candidate Starts for Cross_182:
(Start: 10 @97872 has 51 MA's), (14, 97929), (21, 98031), (22, 98043), (24, 98082), (25, 98085),

Gene: Cursive_181 Start: 96082, Stop: 96303, Start Num: 10
Candidate Starts for Cursive_181:
(Start: 10 @96082 has 51 MA's), (14, 96139), (21, 96241), (22, 96253), (24, 96292), (25, 96295),

Gene: Daubenski_176 Start: 97746, Stop: 97967, Start Num: 10
Candidate Starts for Daubenski_176:
(Start: 10 @97746 has 51 MA's), (11, 97758), (14, 97803), (22, 97917),

Gene: Elmer_200 Start: 101140, Stop: 101364, Start Num: 10
Candidate Starts for Elmer_200:

(Start: 10 @101140 has 51 MA's), (11, 101152), (20, 101284), (26, 101353),

Gene: Enygma_199 Start: 100871, Stop: 101095, Start Num: 10

Candidate Starts for Enygma_199:

(Start: 10 @100871 has 51 MA's), (11, 100883), (14, 100928), (26, 101084),

Gene: Evy_174 Start: 97572, Stop: 97793, Start Num: 10

Candidate Starts for Evy_174:

(1, 97458), (2, 97464), (3, 97479), (4, 97500), (6, 97536), (8, 97563), (9, 97566), (Start: 10 @97572 has 51 MA's), (14, 97629), (21, 97731), (24, 97782), (25, 97785),

Gene: Genie2_189 Start: 97747, Stop: 97971, Start Num: 10

Candidate Starts for Genie2_189:

(Start: 10 @97747 has 51 MA's), (11, 97759), (14, 97804), (26, 97960),

Gene: Gibbi_202 Start: 98527, Stop: 98751, Start Num: 10

Candidate Starts for Gibbi_202:

(Start: 10 @98527 has 51 MA's), (11, 98539), (13, 98566), (26, 98740),

Gene: IchabodCrane_190 Start: 98042, Stop: 98266, Start Num: 10

Candidate Starts for IchabodCrane_190:

(Start: 10 @98042 has 51 MA's), (11, 98054), (13, 98081), (26, 98255),

Gene: JimJam_201 Start: 99963, Stop: 100187, Start Num: 10

Candidate Starts for JimJam_201:

(Start: 10 @99963 has 51 MA's), (11, 99975), (13, 100002), (26, 100176),

Gene: Jollison_191 Start: 98173, Stop: 98400, Start Num: 10

Candidate Starts for Jollison_191:

(Start: 10 @98173 has 51 MA's), (11, 98185), (13, 98212), (26, 98386),

Gene: Karimac_194 Start: 98367, Stop: 98591, Start Num: 10

Candidate Starts for Karimac_194:

(Start: 10 @98367 has 51 MA's), (11, 98379), (13, 98406), (26, 98580),

Gene: KentuckyRacer_200 Start: 99878, Stop: 100102, Start Num: 10

Candidate Starts for KentuckyRacer_200:

(Start: 10 @99878 has 51 MA's), (11, 99890), (13, 99917), (26, 100091),

Gene: Leo04_184 Start: 98238, Stop: 98459, Start Num: 10

Candidate Starts for Leo04_184:

(Start: 10 @98238 has 51 MA's), (14, 98295), (21, 98397), (22, 98409), (24, 98448), (25, 98451),

Gene: Liandry_181 Start: 96750, Stop: 96983, Start Num: 10

Candidate Starts for Liandry_181:

(5, 96690), (Start: 10 @96750 has 51 MA's), (11, 96762), (12, 96768), (17, 96879), (19, 96891), (23, 96942),

Gene: LilMartin_181 Start: 96098, Stop: 96358, Start Num: 10

Candidate Starts for LilMartin_181:

(Start: 10 @96098 has 51 MA's), (11, 96110), (16, 96215), (20, 96242), (23, 96293), (27, 96332),

Gene: LukeCage_194 Start: 99297, Stop: 99521, Start Num: 10

Candidate Starts for LukeCage_194:
(Start: 10 @99297 has 51 MA's), (11, 99309), (26, 99510),

Gene: Lululemon_181 Start: 96608, Stop: 96829, Start Num: 10
Candidate Starts for Lululemon_181:
(Start: 10 @96608 has 51 MA's), (14, 96665), (21, 96767), (22, 96779), (24, 96818), (25, 96821),

Gene: Mildred21_191 Start: 96364, Stop: 96627, Start Num: 10
Candidate Starts for Mildred21_191:
(5, 96313), (Start: 10 @96364 has 51 MA's), (11, 96376), (17, 96493), (27, 96598),

Gene: MindFlayer_187 Start: 97558, Stop: 97782, Start Num: 10
Candidate Starts for MindFlayer_187:
(Start: 10 @97558 has 51 MA's), (11, 97570), (13, 97597), (26, 97771),

Gene: Mugiwara_202 Start: 99700, Stop: 99924, Start Num: 10
Candidate Starts for Mugiwara_202:
(Start: 10 @99700 has 51 MA's), (11, 99712), (13, 99739), (26, 99913),

Gene: MulchMansion_184 Start: 97478, Stop: 97738, Start Num: 10
Candidate Starts for MulchMansion_184:
(7, 97460), (Start: 10 @97478 has 51 MA's), (11, 97490), (16, 97595), (20, 97622), (23, 97673), (27, 97712),

Gene: PacManQ_181 Start: 96608, Stop: 96829, Start Num: 10
Candidate Starts for PacManQ_181:
(Start: 10 @96608 has 51 MA's), (14, 96665), (21, 96767), (22, 96779), (24, 96818), (25, 96821),

Gene: Peebs_180 Start: 97550, Stop: 97771, Start Num: 10
Candidate Starts for Peebs_180:
(Start: 10 @97550 has 51 MA's), (14, 97607), (21, 97709), (22, 97721), (24, 97760), (25, 97763),

Gene: Pepperwood_182 Start: 97508, Stop: 97729, Start Num: 10
Candidate Starts for Pepperwood_182:
(Start: 10 @97508 has 51 MA's), (14, 97565), (21, 97667), (22, 97679), (24, 97718), (25, 97721),

Gene: PinkiePie_181 Start: 96750, Stop: 96983, Start Num: 10
Candidate Starts for PinkiePie_181:
(5, 96690), (Start: 10 @96750 has 51 MA's), (11, 96762), (12, 96768), (17, 96879), (19, 96891), (23, 96942),

Gene: PumpkinSpice_196 Start: 98779, Stop: 99003, Start Num: 10
Candidate Starts for PumpkinSpice_196:
(Start: 10 @98779 has 51 MA's), (11, 98791), (13, 98818), (26, 98992),

Gene: Quaran19_194 Start: 98220, Stop: 98444, Start Num: 10
Candidate Starts for Quaran19_194:
(Start: 10 @98220 has 51 MA's), (11, 98232), (13, 98259), (18, 98355), (26, 98433),

Gene: SaltySpittoon_193 Start: 97762, Stop: 97986, Start Num: 10
Candidate Starts for SaltySpittoon_193:
(Start: 10 @97762 has 51 MA's), (11, 97774), (13, 97801), (26, 97975),

Gene: Samisti12_185 Start: 98934, Stop: 99155, Start Num: 10
Candidate Starts for Samisti12_185:
(Start: 10 @98934 has 51 MA's), (14, 98991), (21, 99093), (22, 99105), (24, 99144), (25, 99147),

Gene: Scheme_187 Start: 99115, Stop: 99336, Start Num: 10
Candidate Starts for Scheme_187:
(Start: 10 @99115 has 51 MA's), (14, 99172), (21, 99274), (22, 99286), (24, 99325), (25, 99328),

Gene: Sollertia_190 Start: 97747, Stop: 97971, Start Num: 10
Candidate Starts for Sollertia_190:
(Start: 10 @97747 has 51 MA's), (11, 97759), (14, 97804), (26, 97960),

Gene: Spelly_197 Start: 97691, Stop: 97915, Start Num: 10
Candidate Starts for Spelly_197:
(Start: 10 @97691 has 51 MA's), (11, 97703), (13, 97730), (26, 97904),

Gene: Spilled_200 Start: 98895, Stop: 99119, Start Num: 10
Candidate Starts for Spilled_200:
(Start: 10 @98895 has 51 MA's), (11, 98907), (13, 98934), (26, 99108),

Gene: Squillium_184 Start: 96752, Stop: 96985, Start Num: 10
Candidate Starts for Squillium_184:
(5, 96692), (Start: 10 @96752 has 51 MA's), (11, 96764), (12, 96770), (17, 96881), (19, 96893), (23, 96944),

Gene: Stanimal_189 Start: 98108, Stop: 98332, Start Num: 10
Candidate Starts for Stanimal_189:
(Start: 10 @98108 has 51 MA's), (11, 98120), (14, 98165), (26, 98321),

Gene: StarPlatinum_200 Start: 100164, Stop: 100388, Start Num: 10
Candidate Starts for StarPlatinum_200:
(Start: 10 @100164 has 51 MA's), (11, 100176), (15, 100263), (26, 100377),

Gene: Starbow_192 Start: 97735, Stop: 97959, Start Num: 10
Candidate Starts for Starbow_192:
(Start: 10 @97735 has 51 MA's), (11, 97747), (13, 97774), (26, 97948),

Gene: Sushi23_183 Start: 98614, Stop: 98835, Start Num: 10
Candidate Starts for Sushi23_183:
(Start: 10 @98614 has 51 MA's), (14, 98671), (21, 98773), (22, 98785), (24, 98824), (25, 98827),

Gene: Targaryen_182 Start: 98781, Stop: 99002, Start Num: 10
Candidate Starts for Targaryen_182:
(1, 98667), (2, 98673), (3, 98688), (4, 98709), (6, 98745), (8, 98772), (9, 98775), (Start: 10 @98781 has 51 MA's), (14, 98838), (21, 98940), (24, 98991), (25, 98994),

Gene: TomSawyer_199 Start: 100206, Stop: 100430, Start Num: 10
Candidate Starts for TomSawyer_199:
(Start: 10 @100206 has 51 MA's), (11, 100218), (13, 100245), (26, 100419),

Gene: Tribute_180 Start: 98049, Stop: 98270, Start Num: 10
Candidate Starts for Tribute_180:
(Start: 10 @98049 has 51 MA's), (14, 98106), (21, 98208), (22, 98220), (24, 98259), (25, 98262),

Gene: Wipeout_186 Start: 99158, Stop: 99382, Start Num: 10

Candidate Starts for Wipeout_186:

(Start: 10 @99158 has 51 MA's), (11, 99170), (13, 99197), (26, 99371),

Gene: Wofford_193 Start: 101100, Stop: 101324, Start Num: 10

Candidate Starts for Wofford_193:

(Start: 10 @101100 has 51 MA's), (11, 101112), (20, 101244), (26, 101313),

Gene: Yaboi_193 Start: 97682, Stop: 97906, Start Num: 10

Candidate Starts for Yaboi_193:

(Start: 10 @97682 has 51 MA's), (11, 97694), (14, 97739), (26, 97895),