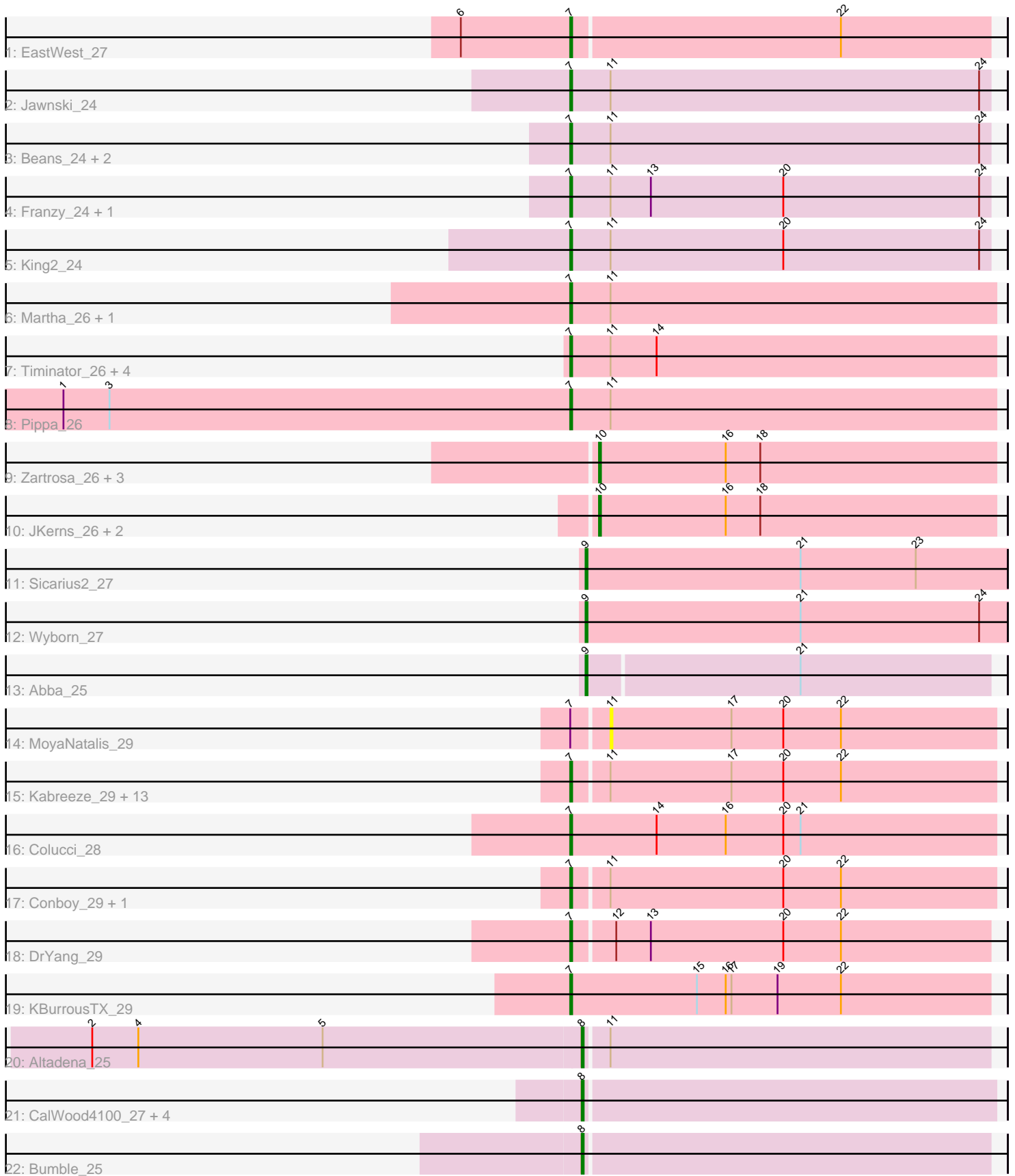


Pham 194071



Note: Tracks are now grouped by subcluster and scaled. Switching in subcluster is indicated by changes in track color. Track scale is now set by default to display the region 30 bp upstream of start 1 to 30 bp downstream of the last possible start. If this default region is judged to be packed too tightly with annotated starts, the track will be further scaled to only show that region of the ORF with annotated starts. This action will be indicated by adding "Zoomed" to the title. For starts, yellow indicates the location of called starts comprised solely of Glimmer/GeneMark auto-annotations, green indicates the location of called starts with at least 1 manual gene annotation.

Pham 194071 Report

This analysis was run 11/02/24 on database version 579.

Pham number 194071 has 53 members, 3 are drafts.

Phages represented in each track:

- Track 1 : EastWest_27
- Track 2 : Jawnski_24
- Track 3 : Beans_24, Piccoletto_24, NathanVaag_24
- Track 4 : Franzy_24, Brent_24
- Track 5 : King2_24
- Track 6 : Martha_26, BossLady_26
- Track 7 : Timinator_26, BarretLemon_26, GravityBall_26, LeeroyJ_26, StevieBAY_26
- Track 8 : Pippa_26
- Track 9 : Zartrosa_26, TaeYoung_26, Grekaycon_26, Shade_26
- Track 10 : JKerns_26, Sonny_26, Jordan_26
- Track 11 : Sicarius2_27
- Track 12 : Wyborn_27
- Track 13 : Abba_25
- Track 14 : MoyaNatalis_29
- Track 15 : Kabreeze_29, Chocolat_29, Scavito_29, Chipper1996_290, PrincessTrina_29, Chubster_29, JaNo_29, RosiePosie_29, Lymara_29, Mordred_29, Linus_29, Tophat_29, JayCookie_29, HumptyDumpty_29
- Track 16 : Colucci_28
- Track 17 : Conboy_29, EdgarPoe_29
- Track 18 : DrYang_29
- Track 19 : KBurrousTX_29
- Track 20 : Altadena_25
- Track 21 : CalWood4100_27, Prairie_25, Bolt007_26, Lilmac1015_27, Klevey_26
- Track 22 : Bumble_25

Summary of Final Annotations (See graph section above for start numbers):

The start number called the most often in the published annotations is 7, it was called in 34 of the 50 non-draft genes in the pham.

Genes that call this "Most Annotated" start:

- BarretLemon_26, Beans_24, BossLady_26, Brent_24, Chipper1996_290, Chocolat_29, Chubster_29, Colucci_28, Conboy_29, DrYang_29, EastWest_27,

EdgarPoe_29, Franzy_24, GravityBall_26, HumptyDumpty_29, JaNo_29, Jawnski_24, JayCookie_29, KBurrousTX_29, Kabreeze_29, King2_24, LeeroyJ_26, Linus_29, Lymara_29, Martha_26, Mordred_29, NathanVaag_24, Piccoletto_24, Pippa_26, PrincessTrina_29, RosiePosie_29, Scavito_29, StevieBAY_26, Timinator_26, Tophat_29,

Genes that have the "Most Annotated" start but do not call it:

- MoyaNatalis_29,

Genes that do not have the "Most Annotated" start:

- Abba_25, Altadena_25, Bolt007_26, Bumble_25, CalWood4100_27, Grekaycon_26, JKerns_26, Jordan_26, Klevey_26, Lilmac1015_27, Prairie_25, Shade_26, Sicarius2_27, Sonny_26, TaeYoung_26, Wyborn_27, Zartrosa_26,

Summary by start number:

Start 7:

- Found in 36 of 53 (67.9%) of genes in pham
- Manual Annotations of this start: 34 of 50
- Called 97.2% of time when present
- Phage (with cluster) where this start called: BarretLemon_26 (AO2), Beans_24 (AO1), BossLady_26 (AO2), Brent_24 (AO1), Chipper1996_290 (AR), Chocolat_29 (AR), Chubster_29 (AR), Colucci_28 (AR), Conboy_29 (AR), DrYang_29 (AR), EastWest_27 (AO), EdgarPoe_29 (AR), Franzy_24 (AO1), GravityBall_26 (AO2), HumptyDumpty_29 (AR), JaNo_29 (AR), Jawnski_24 (AO1), JayCookie_29 (AR), KBurrousTX_29 (AR), Kabreeze_29 (AR), King2_24 (AO1), LeeroyJ_26 (AO2), Linus_29 (AR), Lymara_29 (AR), Martha_26 (AO2), Mordred_29 (AR), NathanVaag_24 (AO1), Piccoletto_24 (AO1), Pippa_26 (AO2), PrincessTrina_29 (AR), RosiePosie_29 (AR), Scavito_29 (AR), StevieBAY_26 (AO2), Timinator_26 (AO2), Tophat_29 (AR),

Start 8:

- Found in 7 of 53 (13.2%) of genes in pham
- Manual Annotations of this start: 6 of 50
- Called 100.0% of time when present
- Phage (with cluster) where this start called: Altadena_25 (FH), Bolt007_26 (FH), Bumble_25 (FH), CalWood4100_27 (FH), Klevey_26 (FH), Lilmac1015_27 (FH), Prairie_25 (FH),

Start 9:

- Found in 3 of 53 (5.7%) of genes in pham
- Manual Annotations of this start: 3 of 50
- Called 100.0% of time when present
- Phage (with cluster) where this start called: Abba_25 (AO3), Sicarius2_27 (AO2), Wyborn_27 (AO2),

Start 10:

- Found in 7 of 53 (13.2%) of genes in pham
- Manual Annotations of this start: 7 of 50
- Called 100.0% of time when present
- Phage (with cluster) where this start called: Grekaycon_26 (AO2), JKerns_26 (AO2), Jordan_26 (AO2), Shade_26 (AO2), Sonny_26 (AO2), TaeYoung_26 (AO2), Zartrosa_26 (AO2),

Start 11:

- Found in 33 of 53 (62.3%) of genes in pham
- No Manual Annotations of this start.
- Called 3.0% of time when present
- Phage (with cluster) where this start called: MoyaNatalis_29 (AR),

Summary by clusters:

There are 6 clusters represented in this pham: AO, AR, AO3, AO2, AO1, FH,

Info for manual annotations of cluster AO:

- Start number 7 was manually annotated 1 time for cluster AO.

Info for manual annotations of cluster AO1:

- Start number 7 was manually annotated 7 times for cluster AO1.

Info for manual annotations of cluster AO2:

- Start number 7 was manually annotated 7 times for cluster AO2.
- Start number 9 was manually annotated 2 times for cluster AO2.
- Start number 10 was manually annotated 7 times for cluster AO2.

Info for manual annotations of cluster AO3:

- Start number 9 was manually annotated 1 time for cluster AO3.

Info for manual annotations of cluster AR:

- Start number 7 was manually annotated 19 times for cluster AR.

Info for manual annotations of cluster FH:

- Start number 8 was manually annotated 6 times for cluster FH.

Gene Information:

Gene: Abba_25 Start: 22963, Stop: 23169, Start Num: 9

Candidate Starts for Abba_25:

(Start: 9 @22963 has 3 MA's), (21, 23071),

Gene: Altadena_25 Start: 22149, Stop: 22358, Start Num: 8

Candidate Starts for Altadena_25:

(2, 21900), (4, 21924), (5, 22020), (Start: 8 @22149 has 6 MA's), (11, 22161),

Gene: BarretLemon_26 Start: 23109, Stop: 23330, Start Num: 7

Candidate Starts for BarretLemon_26:

(Start: 7 @23109 has 34 MA's), (11, 23130), (14, 23154),

Gene: Beans_24 Start: 22775, Stop: 22993, Start Num: 7

Candidate Starts for Beans_24:

(Start: 7 @22775 has 34 MA's), (11, 22796), (24, 22988),

Gene: Bolt007_26 Start: 21191, Stop: 21403, Start Num: 8

Candidate Starts for Bolt007_26:

(Start: 8 @21191 has 6 MA's),

Gene: BossLady_26 Start: 23086, Stop: 23307, Start Num: 7

Candidate Starts for BossLady_26:

(Start: 7 @23086 has 34 MA's), (11, 23107),

Gene: Brent_24 Start: 22757, Stop: 22975, Start Num: 7

Candidate Starts for Brent_24:

(Start: 7 @22757 has 34 MA's), (11, 22778), (13, 22799), (20, 22868), (24, 22970),

Gene: Bumble_25 Start: 22023, Stop: 22232, Start Num: 8

Candidate Starts for Bumble_25:

(Start: 8 @22023 has 6 MA's),

Gene: CalWood4100_27 Start: 21181, Stop: 21393, Start Num: 8

Candidate Starts for CalWood4100_27:

(Start: 8 @21181 has 6 MA's),

Gene: Chipper1996_290 Start: 25931, Stop: 26149, Start Num: 7

Candidate Starts for Chipper1996_290:

(Start: 7 @25931 has 34 MA's), (11, 25949), (17, 26012), (20, 26039), (22, 26069),

Gene: Chocolat_29 Start: 25931, Stop: 26149, Start Num: 7

Candidate Starts for Chocolat_29:

(Start: 7 @25931 has 34 MA's), (11, 25949), (17, 26012), (20, 26039), (22, 26069),

Gene: Chubster_29 Start: 25702, Stop: 25920, Start Num: 7

Candidate Starts for Chubster_29:

(Start: 7 @25702 has 34 MA's), (11, 25720), (17, 25783), (20, 25810), (22, 25840),

Gene: Colucci_28 Start: 25397, Stop: 25618, Start Num: 7

Candidate Starts for Colucci_28:

(Start: 7 @25397 has 34 MA's), (14, 25442), (16, 25478), (20, 25508), (21, 25517),

Gene: Conboy_29 Start: 25930, Stop: 26148, Start Num: 7

Candidate Starts for Conboy_29:

(Start: 7 @25930 has 34 MA's), (11, 25948), (20, 26038), (22, 26068),

Gene: DrYang_29 Start: 27022, Stop: 27237, Start Num: 7

Candidate Starts for DrYang_29:

(Start: 7 @27022 has 34 MA's), (12, 27043), (13, 27061), (20, 27130), (22, 27160),

Gene: EastWest_27 Start: 23044, Stop: 23259, Start Num: 7

Candidate Starts for EastWest_27:

(6, 22987), (Start: 7 @23044 has 34 MA's), (22, 23182),

Gene: EdgarPoe_29 Start: 25930, Stop: 26148, Start Num: 7

Candidate Starts for EdgarPoe_29:

(Start: 7 @25930 has 34 MA's), (11, 25948), (20, 26038), (22, 26068),

Gene: Franzy_24 Start: 22756, Stop: 22974, Start Num: 7

Candidate Starts for Franzy_24:

(Start: 7 @22756 has 34 MA's), (11, 22777), (13, 22798), (20, 22867), (24, 22969),

Gene: GravityBall_26 Start: 23108, Stop: 23329, Start Num: 7

Candidate Starts for GravityBall_26:

(Start: 7 @23108 has 34 MA's), (11, 23129), (14, 23153),

Gene: Grekaycon_26 Start: 23098, Stop: 23304, Start Num: 10

Candidate Starts for Grekaycon_26:

(Start: 10 @23098 has 7 MA's), (16, 23164), (18, 23182),

Gene: HumptyDumpty_29 Start: 25929, Stop: 26147, Start Num: 7

Candidate Starts for HumptyDumpty_29:

(Start: 7 @25929 has 34 MA's), (11, 25947), (17, 26010), (20, 26037), (22, 26067),

Gene: JKerns_26 Start: 23125, Stop: 23331, Start Num: 10

Candidate Starts for JKerns_26:

(Start: 10 @23125 has 7 MA's), (16, 23191), (18, 23209),

Gene: JaNo_29 Start: 25929, Stop: 26147, Start Num: 7

Candidate Starts for JaNo_29:

(Start: 7 @25929 has 34 MA's), (11, 25947), (17, 26010), (20, 26037), (22, 26067),

Gene: Jawnski_24 Start: 22770, Stop: 22988, Start Num: 7

Candidate Starts for Jawnski_24:

(Start: 7 @22770 has 34 MA's), (11, 22791), (24, 22983),

Gene: JayCookie_29 Start: 25932, Stop: 26150, Start Num: 7

Candidate Starts for JayCookie_29:

(Start: 7 @25932 has 34 MA's), (11, 25950), (17, 26013), (20, 26040), (22, 26070),

Gene: Jordan_26 Start: 23095, Stop: 23301, Start Num: 10

Candidate Starts for Jordan_26:

(Start: 10 @23095 has 7 MA's), (16, 23161), (18, 23179),

Gene: KBurrousTX_29 Start: 26849, Stop: 27067, Start Num: 7

Candidate Starts for KBurrousTX_29:

(Start: 7 @26849 has 34 MA's), (15, 26915), (16, 26930), (17, 26933), (19, 26957), (22, 26990),

Gene: Kabreeze_29 Start: 25929, Stop: 26147, Start Num: 7

Candidate Starts for Kabreeze_29:

(Start: 7 @25929 has 34 MA's), (11, 25947), (17, 26010), (20, 26037), (22, 26067),

Gene: King2_24 Start: 22775, Stop: 22993, Start Num: 7

Candidate Starts for King2_24:

(Start: 7 @22775 has 34 MA's), (11, 22796), (20, 22886), (24, 22988),

Gene: Klevey_26 Start: 21191, Stop: 21403, Start Num: 8

Candidate Starts for Klevey_26:

(Start: 8 @21191 has 6 MA's),

Gene: LeeroyJ_26 Start: 23108, Stop: 23329, Start Num: 7

Candidate Starts for LeeroyJ_26:

(Start: 7 @23108 has 34 MA's), (11, 23129), (14, 23153),

Gene: Lilmac1015_27 Start: 21181, Stop: 21393, Start Num: 8
Candidate Starts for Lilmac1015_27:
(Start: 8 @21181 has 6 MA's),

Gene: Linus_29 Start: 25929, Stop: 26147, Start Num: 7
Candidate Starts for Linus_29:
(Start: 7 @25929 has 34 MA's), (11, 25947), (17, 26010), (20, 26037), (22, 26067),

Gene: Lymara_29 Start: 25927, Stop: 26145, Start Num: 7
Candidate Starts for Lymara_29:
(Start: 7 @25927 has 34 MA's), (11, 25945), (17, 26008), (20, 26035), (22, 26065),

Gene: Martha_26 Start: 23033, Stop: 23254, Start Num: 7
Candidate Starts for Martha_26:
(Start: 7 @23033 has 34 MA's), (11, 23054),

Gene: Mordred_29 Start: 25929, Stop: 26147, Start Num: 7
Candidate Starts for Mordred_29:
(Start: 7 @25929 has 34 MA's), (11, 25947), (17, 26010), (20, 26037), (22, 26067),

Gene: MoyaNatalis_29 Start: 25950, Stop: 26150, Start Num: 11
Candidate Starts for MoyaNatalis_29:
(Start: 7 @25932 has 34 MA's), (11, 25950), (17, 26013), (20, 26040), (22, 26070),

Gene: NathanVaag_24 Start: 22751, Stop: 22969, Start Num: 7
Candidate Starts for NathanVaag_24:
(Start: 7 @22751 has 34 MA's), (11, 22772), (24, 22964),

Gene: Piccoletto_24 Start: 22750, Stop: 22968, Start Num: 7
Candidate Starts for Piccoletto_24:
(Start: 7 @22750 has 34 MA's), (11, 22771), (24, 22963),

Gene: Pippa_26 Start: 23131, Stop: 23352, Start Num: 7
Candidate Starts for Pippa_26:
(1, 22867), (3, 22891), (Start: 7 @23131 has 34 MA's), (11, 23152),

Gene: Prairie_25 Start: 21209, Stop: 21421, Start Num: 8
Candidate Starts for Prairie_25:
(Start: 8 @21209 has 6 MA's),

Gene: PrincessTrina_29 Start: 25932, Stop: 26150, Start Num: 7
Candidate Starts for PrincessTrina_29:
(Start: 7 @25932 has 34 MA's), (11, 25950), (17, 26013), (20, 26040), (22, 26070),

Gene: RosiePosie_29 Start: 25932, Stop: 26150, Start Num: 7
Candidate Starts for RosiePosie_29:
(Start: 7 @25932 has 34 MA's), (11, 25950), (17, 26013), (20, 26040), (22, 26070),

Gene: Scavito_29 Start: 25929, Stop: 26147, Start Num: 7
Candidate Starts for Scavito_29:
(Start: 7 @25929 has 34 MA's), (11, 25947), (17, 26010), (20, 26037), (22, 26067),

Gene: Shade_26 Start: 23074, Stop: 23280, Start Num: 10

Candidate Starts for Shade_26:

(Start: 10 @23074 has 7 MA's), (16, 23140), (18, 23158),

Gene: Sicarius2_27 Start: 23495, Stop: 23713, Start Num: 9

Candidate Starts for Sicarius2_27:

(Start: 9 @23495 has 3 MA's), (21, 23606), (23, 23666),

Gene: Sonny_26 Start: 23095, Stop: 23301, Start Num: 10

Candidate Starts for Sonny_26:

(Start: 10 @23095 has 7 MA's), (16, 23161), (18, 23179),

Gene: StevieBAY_26 Start: 23108, Stop: 23329, Start Num: 7

Candidate Starts for StevieBAY_26:

(Start: 7 @23108 has 34 MA's), (11, 23129), (14, 23153),

Gene: TaeYoung_26 Start: 23099, Stop: 23305, Start Num: 10

Candidate Starts for TaeYoung_26:

(Start: 10 @23099 has 7 MA's), (16, 23165), (18, 23183),

Gene: Timinator_26 Start: 23108, Stop: 23329, Start Num: 7

Candidate Starts for Timinator_26:

(Start: 7 @23108 has 34 MA's), (11, 23129), (14, 23153),

Gene: Tophat_29 Start: 25931, Stop: 26149, Start Num: 7

Candidate Starts for Tophat_29:

(Start: 7 @25931 has 34 MA's), (11, 25949), (17, 26012), (20, 26039), (22, 26069),

Gene: Wyborn_27 Start: 23470, Stop: 23688, Start Num: 9

Candidate Starts for Wyborn_27:

(Start: 9 @23470 has 3 MA's), (21, 23581), (24, 23674),

Gene: Zartrosa_26 Start: 23098, Stop: 23304, Start Num: 10

Candidate Starts for Zartrosa_26:

(Start: 10 @23098 has 7 MA's), (16, 23164), (18, 23182),