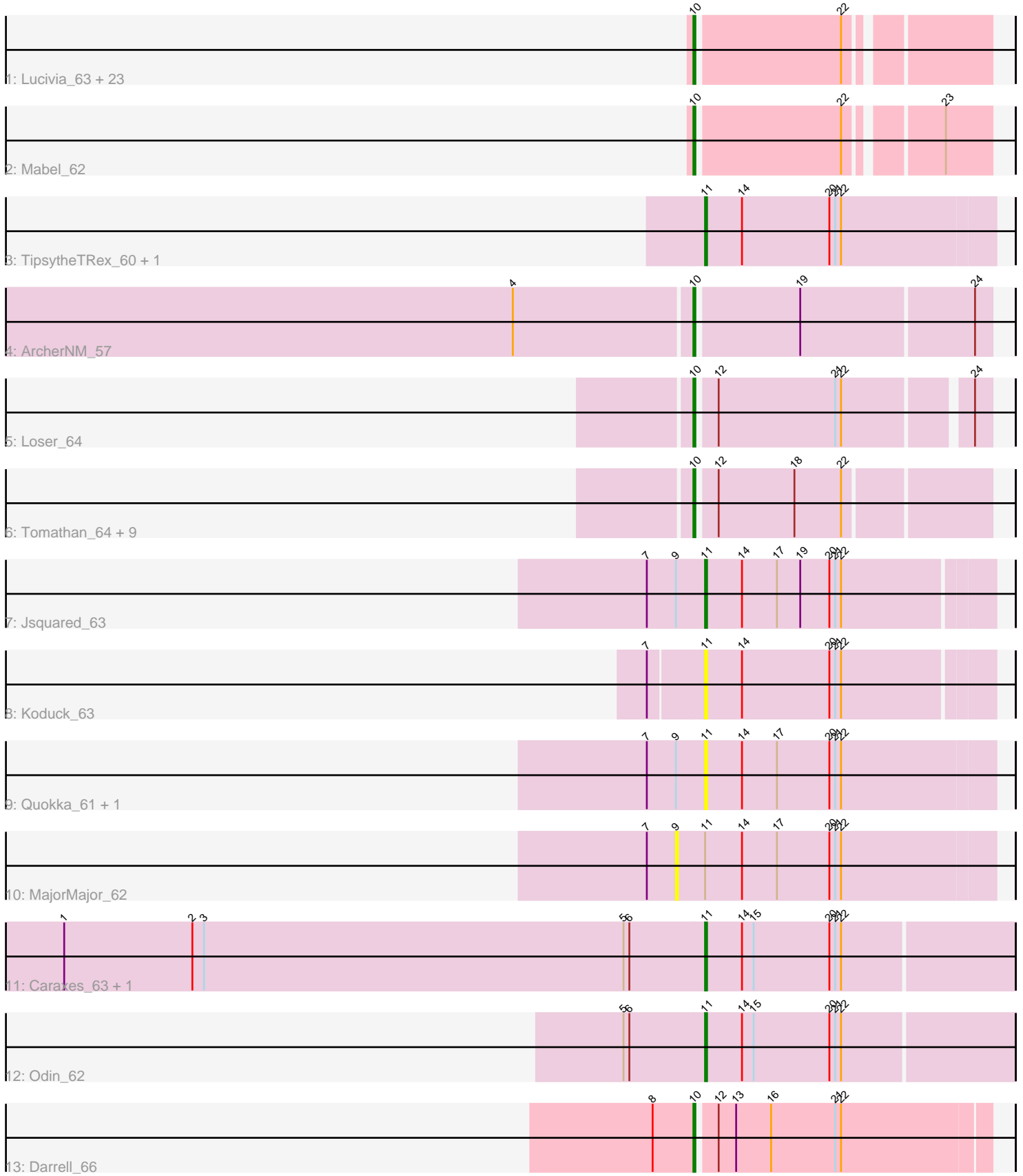


Pham 194096



Note: Tracks are now grouped by subcluster and scaled. Switching in subcluster is indicated by changes in track color. Track scale is now set by default to display the region 30 bp upstream of start 1 to 30 bp downstream of the last possible start. If this default region is judged to be packed too tightly with annotated starts, the track will be further scaled to only show that region of the ORF with annotated starts. This action will be indicated by adding "Zoomed" to the title. For starts, yellow indicates the location of called starts comprised solely of Glimmer/GeneMark auto-annotations, green indicates the location of called starts with at least 1 manual gene annotation.

Pham 194096 Report

This analysis was run 11/02/24 on database version 579.

Pham number 194096 has 48 members, 7 are drafts.

Phages represented in each track:

- Track 1 : Lucivia_63, Salz_61, Orange_61, Flaverint_63, Bachome_64, Hutc2_61, Jabith_63, Bowtie_63, Insomnia_63, Petersenfast_60, Sham4_62, Mulciber_61, Timothy_62, Snape_62, TinyTimmy_62, Ebony_62, MaCh_62, Fibonacci_62, Munch_62, Et2Brutus_61, Aneem_63, Gilberta_63, Bud_61, Joselito_63
- Track 2 : Mabel_62
- Track 3 : TipsytheTRex_60, Serenity_63
- Track 4 : ArcherNM_57
- Track 5 : Loser_64
- Track 6 : Tomathan_64, Duplo_64, Travvers_63, D29_59.1, Naji_64, Pomar16_63, Kerberos_64, D32_63, StarStuff_64, DBQu4n_64
- Track 7 : Jsquared_63
- Track 8 : Koduck_63
- Track 9 : Quokka_61, Bradman_62
- Track 10 : MajorMajor_62
- Track 11 : Caraxes_63, Superchunk_62
- Track 12 : Odin_62
- Track 13 : Darrell_66

Summary of Final Annotations (See graph section above for start numbers):

The start number called the most often in the published annotations is 10, it was called in 36 of the 41 non-draft genes in the pham.

Genes that call this "Most Annotated" start:

- Aneem_63, ArcherNM_57, Bachome_64, Bowtie_63, Bud_61, D29_59.1, D32_63, DBQu4n_64, Darrell_66, Duplo_64, Ebony_62, Et2Brutus_61, Fibonacci_62, Flaverint_63, Gilberta_63, Hutc2_61, Insomnia_63, Jabith_63, Joselito_63, Kerberos_64, Loser_64, Lucivia_63, MaCh_62, Mabel_62, Mulciber_61, Munch_62, Naji_64, Orange_61, Petersenfast_60, Pomar16_63, Salz_61, Sham4_62, Snape_62, StarStuff_64, Timothy_62, TinyTimmy_62, Tomathan_64, Travvers_63,

Genes that have the "Most Annotated" start but do not call it:

-

Genes that do not have the "Most Annotated" start:

- Bradman_62, Caraxes_63, Jsquared_63, Koduck_63, MajorMajor_62, Odin_62, Quokka_61, Serenity_63, Superchunk_62, TipsytheTRex_60,

Summary by start number:

Start 9:

- Found in 4 of 48 (8.3%) of genes in pham
- No Manual Annotations of this start.
- Called 25.0% of time when present
- Phage (with cluster) where this start called: MajorMajor_62 (A2),

Start 10:

- Found in 38 of 48 (79.2%) of genes in pham
- Manual Annotations of this start: 36 of 41
- Called 100.0% of time when present
- Phage (with cluster) where this start called: Aneem_63 (A11), ArcherNM_57 (A2), Bachome_64 (A11), Bowtie_63 (A11), Bud_61 (A11), D29_59.1 (A2), D32_63 (A2), DBQu4n_64 (A2), Darrell_66 (A9), Duplo_64 (A2), Ebony_62 (A11), Et2Brutus_61 (A11), Fibonacci_62 (A11), Flaverint_63 (A11), Gilberta_63 (A11), Hutc2_61 (A11), Insomnia_63 (A11), Jabith_63 (A11), Joselito_63 (A11), Kerberos_64 (A2), Loser_64 (A2), Lucivia_63 (A11), MaCh_62 (A11), Mabel_62 (A11), Mulciber_61 (A11), Munch_62 (A11), Naji_64 (A2), Orange_61 (A11), Petersenfast_60 (A11), Pomar16_63 (A2), Salz_61 (A11), Sham4_62 (A11), Snape_62 (A11), StarStuff_64 (A2), Timothy_62 (A11), TinyTimmy_62 (A11), Tomathan_64 (A2), Travvers_63 (A2),

Start 11:

- Found in 10 of 48 (20.8%) of genes in pham
- Manual Annotations of this start: 5 of 41
- Called 90.0% of time when present
- Phage (with cluster) where this start called: Bradman_62 (A2), Caraxes_63 (A2), Jsquared_63 (A2), Koduck_63 (A2), Odin_62 (A2), Quokka_61 (A2), Serenity_63 (A2), Superchunk_62 (A2), TipsytheTRex_60 (A2),

Summary by clusters:

There are 3 clusters represented in this pham: A9, A2, A11,

Info for manual annotations of cluster A11:

- Start number 10 was manually annotated 24 times for cluster A11.

Info for manual annotations of cluster A2:

- Start number 10 was manually annotated 11 times for cluster A2.
- Start number 11 was manually annotated 5 times for cluster A2.

Info for manual annotations of cluster A9:

- Start number 10 was manually annotated 1 time for cluster A9.

Gene Information:

Gene: Aneem_63 Start: 39459, Stop: 39322, Start Num: 10

Candidate Starts for Aneem_63:
(Start: 10 @39459 has 36 MA's), (22, 39387),

Gene: ArcherNM_57 Start: 39573, Stop: 39427, Start Num: 10
Candidate Starts for ArcherNM_57:
(4, 39663), (Start: 10 @39573 has 36 MA's), (19, 39522), (24, 39435),

Gene: Bachome_64 Start: 39439, Stop: 39302, Start Num: 10
Candidate Starts for Bachome_64:
(Start: 10 @39439 has 36 MA's), (22, 39367),

Gene: Bowtie_63 Start: 39466, Stop: 39329, Start Num: 10
Candidate Starts for Bowtie_63:
(Start: 10 @39466 has 36 MA's), (22, 39394),

Gene: Bradman_62 Start: 39200, Stop: 39054, Start Num: 11
Candidate Starts for Bradman_62:
(7, 39230), (9, 39215), (Start: 11 @39200 has 5 MA's), (14, 39182), (17, 39164), (20, 39137), (21, 39134), (22, 39131),

Gene: Bud_61 Start: 39013, Stop: 38876, Start Num: 10
Candidate Starts for Bud_61:
(Start: 10 @39013 has 36 MA's), (22, 38941),

Gene: Caraxes_63 Start: 38676, Stop: 38521, Start Num: 11
Candidate Starts for Caraxes_63:
(1, 39000), (2, 38934), (3, 38928), (5, 38712), (6, 38709), (Start: 11 @38676 has 5 MA's), (14, 38658), (15, 38652), (20, 38613), (21, 38610), (22, 38607),

Gene: D29_59.1 Start: 39706, Stop: 39563, Start Num: 10
Candidate Starts for D29_59.1:
(Start: 10 @39706 has 36 MA's), (12, 39697), (18, 39658), (22, 39634),

Gene: D32_63 Start: 39706, Stop: 39563, Start Num: 10
Candidate Starts for D32_63:
(Start: 10 @39706 has 36 MA's), (12, 39697), (18, 39658), (22, 39634),

Gene: DBQu4n_64 Start: 39687, Stop: 39544, Start Num: 10
Candidate Starts for DBQu4n_64:
(Start: 10 @39687 has 36 MA's), (12, 39678), (18, 39639), (22, 39615),

Gene: Darrell_66 Start: 40703, Stop: 40557, Start Num: 10
Candidate Starts for Darrell_66:
(8, 40724), (Start: 10 @40703 has 36 MA's), (12, 40694), (13, 40685), (16, 40667), (21, 40634), (22, 40631),

Gene: Duplo_64 Start: 39743, Stop: 39600, Start Num: 10
Candidate Starts for Duplo_64:
(Start: 10 @39743 has 36 MA's), (12, 39734), (18, 39695), (22, 39671),

Gene: Ebony_62 Start: 39030, Stop: 38893, Start Num: 10
Candidate Starts for Ebony_62:
(Start: 10 @39030 has 36 MA's), (22, 38958),

Gene: Et2Brutus_61 Start: 38993, Stop: 38856, Start Num: 10
Candidate Starts for Et2Brutus_61:
(Start: 10 @38993 has 36 MA's), (22, 38921),

Gene: Fibonacci_62 Start: 38999, Stop: 38862, Start Num: 10
Candidate Starts for Fibonacci_62:
(Start: 10 @38999 has 36 MA's), (22, 38927),

Gene: Flaverint_63 Start: 39457, Stop: 39320, Start Num: 10
Candidate Starts for Flaverint_63:
(Start: 10 @39457 has 36 MA's), (22, 39385),

Gene: Gilberta_63 Start: 39450, Stop: 39313, Start Num: 10
Candidate Starts for Gilberta_63:
(Start: 10 @39450 has 36 MA's), (22, 39378),

Gene: Hutc2_61 Start: 38999, Stop: 38862, Start Num: 10
Candidate Starts for Hutc2_61:
(Start: 10 @38999 has 36 MA's), (22, 38927),

Gene: Insomnia_63 Start: 39510, Stop: 39373, Start Num: 10
Candidate Starts for Insomnia_63:
(Start: 10 @39510 has 36 MA's), (22, 39438),

Gene: Jabith_63 Start: 39511, Stop: 39374, Start Num: 10
Candidate Starts for Jabith_63:
(Start: 10 @39511 has 36 MA's), (22, 39439),

Gene: Joselito_63 Start: 39459, Stop: 39322, Start Num: 10
Candidate Starts for Joselito_63:
(Start: 10 @39459 has 36 MA's), (22, 39387),

Gene: Jsquared_63 Start: 39358, Stop: 39215, Start Num: 11
Candidate Starts for Jsquared_63:
(7, 39388), (9, 39373), (Start: 11 @39358 has 5 MA's), (14, 39340), (17, 39322), (19, 39310), (20, 39295), (21, 39292), (22, 39289),

Gene: Kerberos_64 Start: 39705, Stop: 39562, Start Num: 10
Candidate Starts for Kerberos_64:
(Start: 10 @39705 has 36 MA's), (12, 39696), (18, 39657), (22, 39633),

Gene: Koduck_63 Start: 39295, Stop: 39152, Start Num: 11
Candidate Starts for Koduck_63:
(7, 39316), (Start: 11 @39295 has 5 MA's), (14, 39277), (20, 39232), (21, 39229), (22, 39226),

Gene: Loser_64 Start: 40496, Stop: 40356, Start Num: 10
Candidate Starts for Loser_64:
(Start: 10 @40496 has 36 MA's), (12, 40487), (21, 40427), (22, 40424), (24, 40364),

Gene: Lucivia_63 Start: 39508, Stop: 39371, Start Num: 10
Candidate Starts for Lucivia_63:
(Start: 10 @39508 has 36 MA's), (22, 39436),

Gene: MaCh_62 Start: 39438, Stop: 39301, Start Num: 10

Candidate Starts for MaCh_62:

(Start: 10 @39438 has 36 MA's), (22, 39366),

Gene: Mabel_62 Start: 39455, Stop: 39318, Start Num: 10

Candidate Starts for Mabel_62:

(Start: 10 @39455 has 36 MA's), (22, 39383), (23, 39341),

Gene: MajorMajor_62 Start: 39215, Stop: 39054, Start Num: 9

Candidate Starts for MajorMajor_62:

(7, 39230), (9, 39215), (Start: 11 @39200 has 5 MA's), (14, 39182), (17, 39164), (20, 39137), (21, 39134), (22, 39131),

Gene: Mulciber_61 Start: 38996, Stop: 38859, Start Num: 10

Candidate Starts for Mulciber_61:

(Start: 10 @38996 has 36 MA's), (22, 38924),

Gene: Munch_62 Start: 39459, Stop: 39322, Start Num: 10

Candidate Starts for Munch_62:

(Start: 10 @39459 has 36 MA's), (22, 39387),

Gene: Naji_64 Start: 39706, Stop: 39563, Start Num: 10

Candidate Starts for Naji_64:

(Start: 10 @39706 has 36 MA's), (12, 39697), (18, 39658), (22, 39634),

Gene: Odin_62 Start: 39060, Stop: 38905, Start Num: 11

Candidate Starts for Odin_62:

(5, 39096), (6, 39093), (Start: 11 @39060 has 5 MA's), (14, 39042), (15, 39036), (20, 38997), (21, 38994), (22, 38991),

Gene: Orange_61 Start: 39008, Stop: 38871, Start Num: 10

Candidate Starts for Orange_61:

(Start: 10 @39008 has 36 MA's), (22, 38936),

Gene: Petersenfast_60 Start: 39007, Stop: 38870, Start Num: 10

Candidate Starts for Petersenfast_60:

(Start: 10 @39007 has 36 MA's), (22, 38935),

Gene: Pomar16_63 Start: 39746, Stop: 39603, Start Num: 10

Candidate Starts for Pomar16_63:

(Start: 10 @39746 has 36 MA's), (12, 39737), (18, 39698), (22, 39674),

Gene: Quokka_61 Start: 39200, Stop: 39054, Start Num: 11

Candidate Starts for Quokka_61:

(7, 39230), (9, 39215), (Start: 11 @39200 has 5 MA's), (14, 39182), (17, 39164), (20, 39137), (21, 39134), (22, 39131),

Gene: Salz_61 Start: 38978, Stop: 38841, Start Num: 10

Candidate Starts for Salz_61:

(Start: 10 @38978 has 36 MA's), (22, 38906),

Gene: Serenity_63 Start: 39413, Stop: 39267, Start Num: 11

Candidate Starts for Serenity_63:

(Start: 11 @39413 has 5 MA's), (14, 39395), (20, 39350), (21, 39347), (22, 39344),

Gene: Sham4_62 Start: 39006, Stop: 38869, Start Num: 10

Candidate Starts for Sham4_62:

(Start: 10 @39006 has 36 MA's), (22, 38934),

Gene: Snape_62 Start: 38998, Stop: 38861, Start Num: 10

Candidate Starts for Snape_62:

(Start: 10 @38998 has 36 MA's), (22, 38926),

Gene: StarStuff_64 Start: 39708, Stop: 39565, Start Num: 10

Candidate Starts for StarStuff_64:

(Start: 10 @39708 has 36 MA's), (12, 39699), (18, 39660), (22, 39636),

Gene: Superchunk_62 Start: 38676, Stop: 38521, Start Num: 11

Candidate Starts for Superchunk_62:

(1, 39000), (2, 38934), (3, 38928), (5, 38712), (6, 38709), (Start: 11 @38676 has 5 MA's), (14, 38658), (15, 38652), (20, 38613), (21, 38610), (22, 38607),

Gene: Timothy_62 Start: 38975, Stop: 38838, Start Num: 10

Candidate Starts for Timothy_62:

(Start: 10 @38975 has 36 MA's), (22, 38903),

Gene: TinyTimmy_62 Start: 39024, Stop: 38887, Start Num: 10

Candidate Starts for TinyTimmy_62:

(Start: 10 @39024 has 36 MA's), (22, 38952),

Gene: TipsytheTRex_60 Start: 39483, Stop: 39337, Start Num: 11

Candidate Starts for TipsytheTRex_60:

(Start: 11 @39483 has 5 MA's), (14, 39465), (20, 39420), (21, 39417), (22, 39414),

Gene: Tomathan_64 Start: 39755, Stop: 39612, Start Num: 10

Candidate Starts for Tomathan_64:

(Start: 10 @39755 has 36 MA's), (12, 39746), (18, 39707), (22, 39683),

Gene: Travvers_63 Start: 39705, Stop: 39562, Start Num: 10

Candidate Starts for Travvers_63:

(Start: 10 @39705 has 36 MA's), (12, 39696), (18, 39657), (22, 39633),