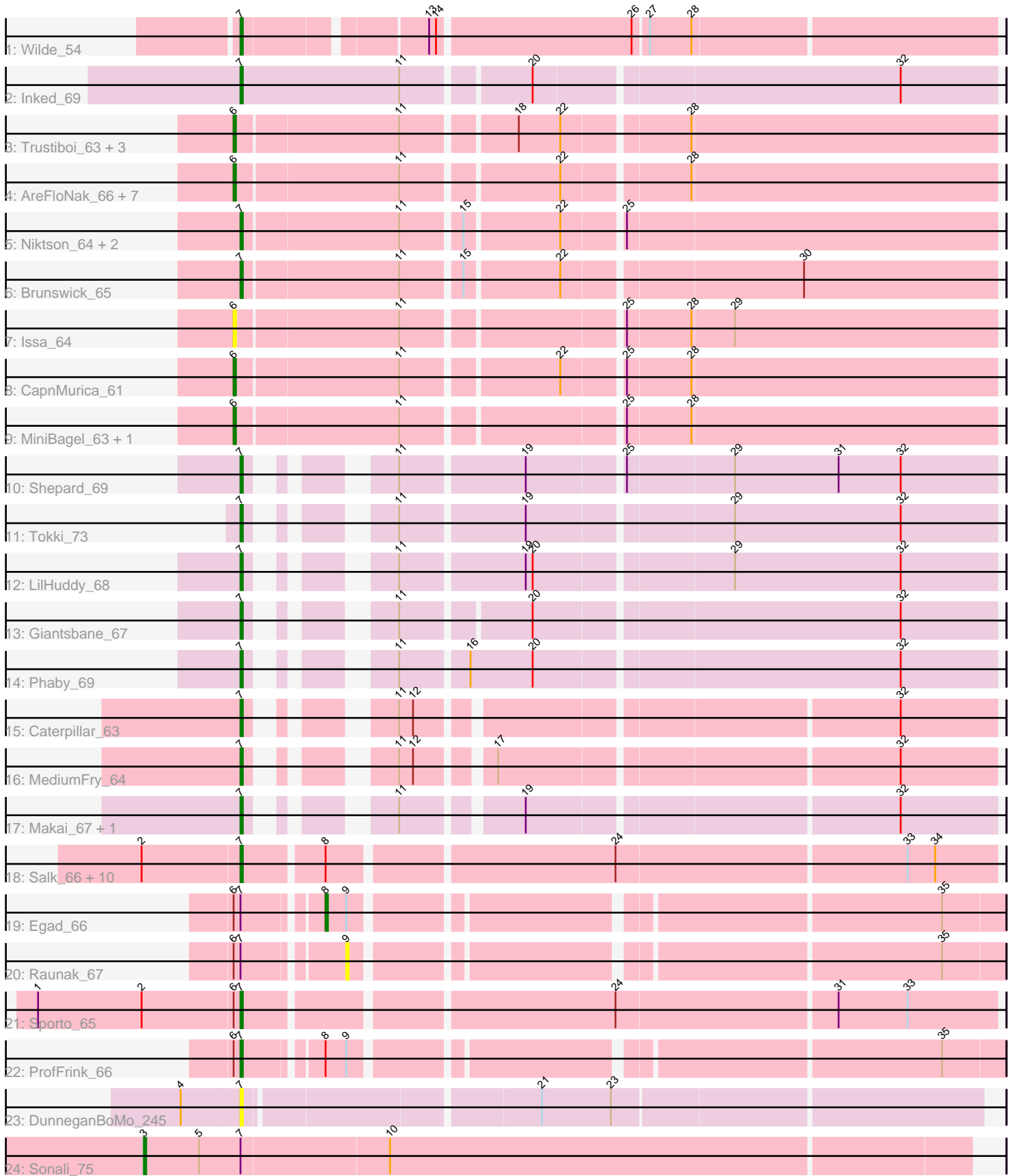


Pham 194098



Note: Tracks are now grouped by subcluster and scaled. Switching in subcluster is indicated by changes in track color. Track scale is now set by default to display the region 30 bp upstream of start 1 to 30 bp downstream of the last possible start. If this default region is judged to be packed too tightly with annotated starts, the track will be further scaled to only show that region of the ORF with annotated starts. This action will be indicated by adding "Zoomed" to the title. For starts, yellow indicates the location of called starts comprised solely of Glimmer/GeneMark auto-annotations, green indicates the location of called starts with at least 1 manual gene annotation.

Pham 194098 Report

This analysis was run 11/02/24 on database version 579.

Pham number 194098 has 48 members, 5 are drafts.

Phages represented in each track:

- Track 1 : Wilde_54
- Track 2 : Inked_69
- Track 3 : Trustiboi_63, Breylor17_63, Nightmare_65, CastorTray_67
- Track 4 : AreFloNak_66, Gordon_61, DevitoJr_63, Darby_62, ScienceWizSam_64, Nivinsha_66, Tatanka_59, Synepsis_62
- Track 5 : Niktson_64, ElephantMan_64, Teacup_65
- Track 6 : Brunswick_65
- Track 7 : Issa_64
- Track 8 : CapnMurica_61
- Track 9 : MiniBagel_63, Tenno_64
- Track 10 : Shepard_69
- Track 11 : Tokki_73
- Track 12 : LilHuddy_68
- Track 13 : Giantsbane_67
- Track 14 : Phaby_69
- Track 15 : Caterpillar_63
- Track 16 : MediumFry_64
- Track 17 : Makai_67, Truckee_65
- Track 18 : Salk_66, Sloopyjoe_66, Stayer_66, Linda_66, Michelle_66, BronxBay_66, StarLord_66, Shiba_65, MrAaronian_66, DoctorPepper_65, Djungelskog_65
- Track 19 : Egad_66
- Track 20 : Raunak_67
- Track 21 : Sporto_65
- Track 22 : ProfFrink_66
- Track 23 : DunneganBoMo_245
- Track 24 : Sonali_75

Summary of Final Annotations (See graph section above for start numbers):

The start number called the most often in the published annotations is 7, it was called in 28 of the 43 non-draft genes in the pham.

Genes that call this "Most Annotated" start:

- BronxBay_66, Brunswick_65, Caterpillar_63, Djungelskog_65, DoctorPepper_65, DunneganBoMo_245, ElephantMan_64, Giantsbane_67, Inked_69, LilHuddy_68, Linda_66, Makai_67, MediumFry_64, Michelle_66, MrAaronian_66, Niktson_64, Phaby_69, ProfFrink_66, Salk_66, Shepard_69, Shiba_65, Sloopyjoe_66, Sporto_65, StarLord_66, Stayer_66, Teacup_65, Tokki_73, Truckee_65, Wilde_54,

Genes that have the "Most Annotated" start but do not call it:

- Egad_66, Raunak_67, Sonali_75,

Genes that do not have the "Most Annotated" start:

- AreFloNak_66, Breylor17_63, CapnMurica_61, CastorTray_67, Darby_62, DevitoJr_63, Gordon_61, Issa_64, MiniBagel_63, Nightmare_65, Nivinsha_66, ScienceWizSam_64, Synepsis_62, Tatanka_59, Tenno_64, Trustiboi_63,

Summary by start number:

Start 3:

- Found in 1 of 48 (2.1%) of genes in pham
- Manual Annotations of this start: 1 of 43
- Called 100.0% of time when present
- Phage (with cluster) where this start called: Sonali_75 (FG),

Start 6:

- Found in 20 of 48 (41.7%) of genes in pham
- Manual Annotations of this start: 13 of 43
- Called 80.0% of time when present
- Phage (with cluster) where this start called: AreFloNak_66 (AU1), Breylor17_63 (AU1), CapnMurica_61 (AU1), CastorTray_67 (AU1), Darby_62 (AU1), DevitoJr_63 (AU1), Gordon_61 (AU1), Issa_64 (AU1), MiniBagel_63 (AU1), Nightmare_65 (AU1), Nivinsha_66 (AU1), ScienceWizSam_64 (AU1), Synepsis_62 (AU1), Tatanka_59 (AU1), Tenno_64 (AU1), Trustiboi_63 (AU1),

Start 7:

- Found in 32 of 48 (66.7%) of genes in pham
- Manual Annotations of this start: 28 of 43
- Called 90.6% of time when present
- Phage (with cluster) where this start called: BronxBay_66 (AW), Brunswick_65 (AU1), Caterpillar_63 (AU4), Djungelskog_65 (AW), DoctorPepper_65 (AW), DunneganBoMo_245 (FC), ElephantMan_64 (AU1), Giantsbane_67 (AU2), Inked_69 (AU), LilHuddy_68 (AU2), Linda_66 (AW), Makai_67 (AU5), MediumFry_64 (AU4), Michelle_66 (AW), MrAaronian_66 (AW), Niktson_64 (AU1), Phaby_69 (AU2), ProfFrink_66 (AW), Salk_66 (AW), Shepard_69 (AU2), Shiba_65 (AW), Sloopyjoe_66 (AW), Sporto_65 (AW), StarLord_66 (AW), Stayer_66 (AW), Teacup_65 (AU1), Tokki_73 (AU2), Truckee_65 (AU5), Wilde_54 (AP1),

Start 8:

- Found in 13 of 48 (27.1%) of genes in pham
- Manual Annotations of this start: 1 of 43
- Called 7.7% of time when present
- Phage (with cluster) where this start called: Egad_66 (AW),

Start 9:

- Found in 3 of 48 (6.2%) of genes in pham

- No Manual Annotations of this start.
- Called 33.3% of time when present
- Phage (with cluster) where this start called: Raunak_67 (AW),

Summary by clusters:

There are 9 clusters represented in this pham: FC, AP1, AU1, AU2, AU5, AU4, AW, FG, AU,

Info for manual annotations of cluster AP1:

- Start number 7 was manually annotated 1 time for cluster AP1.

Info for manual annotations of cluster AU:

- Start number 7 was manually annotated 1 time for cluster AU.

Info for manual annotations of cluster AU1:

- Start number 6 was manually annotated 13 times for cluster AU1.
- Start number 7 was manually annotated 4 times for cluster AU1.

Info for manual annotations of cluster AU2:

- Start number 7 was manually annotated 5 times for cluster AU2.

Info for manual annotations of cluster AU4:

- Start number 7 was manually annotated 2 times for cluster AU4.

Info for manual annotations of cluster AU5:

- Start number 7 was manually annotated 2 times for cluster AU5.

Info for manual annotations of cluster AW:

- Start number 7 was manually annotated 13 times for cluster AW.
- Start number 8 was manually annotated 1 time for cluster AW.

Info for manual annotations of cluster FG:

- Start number 3 was manually annotated 1 time for cluster FG.

Gene Information:

Gene: AreFloNak_66 Start: 44576, Stop: 44890, Start Num: 6

Candidate Starts for AreFloNak_66:

(Start: 6 @44576 has 13 MA's), (11, 44645), (22, 44708), (28, 44759),

Gene: Breylor17_63 Start: 45151, Stop: 45465, Start Num: 6

Candidate Starts for Breylor17_63:

(Start: 6 @45151 has 13 MA's), (11, 45220), (18, 45265), (22, 45283), (28, 45334),

Gene: BronxBay_66 Start: 42743, Stop: 43054, Start Num: 7

Candidate Starts for BronxBay_66:

(2, 42701), (Start: 7 @42743 has 28 MA's), (Start: 8 @42776 has 1 MA's), (24, 42893), (33, 43016), (34, 43028),

Gene: Brunswick_65 Start: 44599, Stop: 44910, Start Num: 7
Candidate Starts for Brunswick_65:
(Start: 7 @44599 has 28 MA's), (11, 44665), (15, 44689), (22, 44728), (30, 44827),

Gene: CapnMurica_61 Start: 45337, Stop: 45651, Start Num: 6
Candidate Starts for CapnMurica_61:
(Start: 6 @45337 has 13 MA's), (11, 45406), (22, 45469), (25, 45493), (28, 45520),

Gene: CastorTray_67 Start: 45340, Stop: 45654, Start Num: 6
Candidate Starts for CastorTray_67:
(Start: 6 @45340 has 13 MA's), (11, 45409), (18, 45454), (22, 45472), (28, 45523),

Gene: Caterpillar_63 Start: 44268, Stop: 44546, Start Num: 7
Candidate Starts for Caterpillar_63:
(Start: 7 @44268 has 28 MA's), (11, 44307), (12, 44313), (32, 44505),

Gene: Darby_62 Start: 44386, Stop: 44700, Start Num: 6
Candidate Starts for Darby_62:
(Start: 6 @44386 has 13 MA's), (11, 44455), (22, 44518), (28, 44569),

Gene: DevitoJr_63 Start: 44772, Stop: 45086, Start Num: 6
Candidate Starts for DevitoJr_63:
(Start: 6 @44772 has 13 MA's), (11, 44841), (22, 44904), (28, 44955),

Gene: Djungelskog_65 Start: 42742, Stop: 43056, Start Num: 7
Candidate Starts for Djungelskog_65:
(2, 42700), (Start: 7 @42742 has 28 MA's), (Start: 8 @42775 has 1 MA's), (24, 42895), (33, 43018),
(34, 43030),

Gene: DoctorPepper_65 Start: 42447, Stop: 42758, Start Num: 7
Candidate Starts for DoctorPepper_65:
(2, 42405), (Start: 7 @42447 has 28 MA's), (Start: 8 @42480 has 1 MA's), (24, 42597), (33, 42720),
(34, 42732),

Gene: DunneganBoMo_245 Start: 159407, Stop: 159712, Start Num: 7
Candidate Starts for DunneganBoMo_245:
(4, 159389), (Start: 7 @159407 has 28 MA's), (21, 159527), (23, 159557),

Gene: Egad_66 Start: 42768, Stop: 43037, Start Num: 8
Candidate Starts for Egad_66:
(Start: 6 @42735 has 13 MA's), (Start: 7 @42738 has 28 MA's), (Start: 8 @42768 has 1 MA's), (9,
42777), (35, 43011),

Gene: ElephantMan_64 Start: 45229, Stop: 45540, Start Num: 7
Candidate Starts for ElephantMan_64:
(Start: 7 @45229 has 28 MA's), (11, 45295), (15, 45319), (22, 45358), (25, 45382),

Gene: Giantsbane_67 Start: 43961, Stop: 44245, Start Num: 7
Candidate Starts for Giantsbane_67:
(Start: 7 @43961 has 28 MA's), (11, 44000), (20, 44051), (32, 44204),

Gene: Gordon_61 Start: 45264, Stop: 45578, Start Num: 6
Candidate Starts for Gordon_61:

(Start: 6 @45264 has 13 MA's), (11, 45333), (22, 45396), (28, 45447),

Gene: Inked_69 Start: 45815, Stop: 46129, Start Num: 7

Candidate Starts for Inked_69:

(Start: 7 @45815 has 28 MA's), (11, 45884), (20, 45935), (32, 46088),

Gene: Issa_64 Start: 44432, Stop: 44746, Start Num: 6

Candidate Starts for Issa_64:

(Start: 6 @44432 has 13 MA's), (11, 44501), (25, 44588), (28, 44615), (29, 44633),

Gene: LilHuddy_68 Start: 45074, Stop: 45361, Start Num: 7

Candidate Starts for LilHuddy_68:

(Start: 7 @45074 has 28 MA's), (11, 45113), (19, 45164), (20, 45167), (29, 45248), (32, 45320),

Gene: Linda_66 Start: 42740, Stop: 43051, Start Num: 7

Candidate Starts for Linda_66:

(2, 42698), (Start: 7 @42740 has 28 MA's), (Start: 8 @42773 has 1 MA's), (24, 42890), (33, 43013), (34, 43025),

Gene: Makai_67 Start: 45228, Stop: 45506, Start Num: 7

Candidate Starts for Makai_67:

(Start: 7 @45228 has 28 MA's), (11, 45267), (19, 45312), (32, 45465),

Gene: MediumFry_64 Start: 44564, Stop: 44842, Start Num: 7

Candidate Starts for MediumFry_64:

(Start: 7 @44564 has 28 MA's), (11, 44603), (12, 44609), (17, 44636), (32, 44801),

Gene: Michelle_66 Start: 42742, Stop: 43053, Start Num: 7

Candidate Starts for Michelle_66:

(2, 42700), (Start: 7 @42742 has 28 MA's), (Start: 8 @42775 has 1 MA's), (24, 42892), (33, 43015), (34, 43027),

Gene: MiniBagel_63 Start: 45328, Stop: 45642, Start Num: 6

Candidate Starts for MiniBagel_63:

(Start: 6 @45328 has 13 MA's), (11, 45397), (25, 45484), (28, 45511),

Gene: MrAaronian_66 Start: 42742, Stop: 43053, Start Num: 7

Candidate Starts for MrAaronian_66:

(2, 42700), (Start: 7 @42742 has 28 MA's), (Start: 8 @42775 has 1 MA's), (24, 42892), (33, 43015), (34, 43027),

Gene: Nightmare_65 Start: 45626, Stop: 45940, Start Num: 6

Candidate Starts for Nightmare_65:

(Start: 6 @45626 has 13 MA's), (11, 45695), (18, 45740), (22, 45758), (28, 45809),

Gene: Niktson_64 Start: 45229, Stop: 45540, Start Num: 7

Candidate Starts for Niktson_64:

(Start: 7 @45229 has 28 MA's), (11, 45295), (15, 45319), (22, 45358), (25, 45382),

Gene: Nivinsha_66 Start: 44576, Stop: 44890, Start Num: 6

Candidate Starts for Nivinsha_66:

(Start: 6 @44576 has 13 MA's), (11, 44645), (22, 44708), (28, 44759),

Gene: Phaby_69 Start: 45635, Stop: 45922, Start Num: 7
Candidate Starts for Phaby_69:
(Start: 7 @45635 has 28 MA's), (11, 45674), (16, 45701), (20, 45728), (32, 45881),

Gene: ProfFrink_66 Start: 42737, Stop: 43036, Start Num: 7
Candidate Starts for ProfFrink_66:
(Start: 6 @42734 has 13 MA's), (Start: 7 @42737 has 28 MA's), (Start: 8 @42767 has 1 MA's), (9, 42776), (35, 43010),

Gene: Raunak_67 Start: 42437, Stop: 42697, Start Num: 9
Candidate Starts for Raunak_67:
(Start: 6 @42395 has 13 MA's), (Start: 7 @42398 has 28 MA's), (9, 42437), (35, 42671),

Gene: Salk_66 Start: 42740, Stop: 43051, Start Num: 7
Candidate Starts for Salk_66:
(2, 42698), (Start: 7 @42740 has 28 MA's), (Start: 8 @42773 has 1 MA's), (24, 42890), (33, 43013), (34, 43025),

Gene: ScienceWizSam_64 Start: 44738, Stop: 45052, Start Num: 6
Candidate Starts for ScienceWizSam_64:
(Start: 6 @44738 has 13 MA's), (11, 44807), (22, 44870), (28, 44921),

Gene: Shepard_69 Start: 44933, Stop: 45220, Start Num: 7
Candidate Starts for Shepard_69:
(Start: 7 @44933 has 28 MA's), (11, 44972), (19, 45023), (25, 45062), (29, 45107), (31, 45152), (32, 45179),

Gene: Shiba_65 Start: 42398, Stop: 42709, Start Num: 7
Candidate Starts for Shiba_65:
(2, 42356), (Start: 7 @42398 has 28 MA's), (Start: 8 @42431 has 1 MA's), (24, 42548), (33, 42671), (34, 42683),

Gene: Sloopyjoe_66 Start: 42744, Stop: 43055, Start Num: 7
Candidate Starts for Sloopyjoe_66:
(2, 42702), (Start: 7 @42744 has 28 MA's), (Start: 8 @42777 has 1 MA's), (24, 42894), (33, 43017), (34, 43029),

Gene: Sonali_75 Start: 48306, Stop: 48659, Start Num: 3
Candidate Starts for Sonali_75:
(Start: 3 @48306 has 1 MA's), (5, 48330), (Start: 7 @48348 has 28 MA's), (10, 48411),

Gene: Sporto_65 Start: 43859, Stop: 44170, Start Num: 7
Candidate Starts for Sporto_65:
(1, 43772), (2, 43817), (Start: 6 @43856 has 13 MA's), (Start: 7 @43859 has 28 MA's), (24, 44009), (31, 44102), (33, 44132),

Gene: StarLord_66 Start: 42737, Stop: 43048, Start Num: 7
Candidate Starts for StarLord_66:
(2, 42695), (Start: 7 @42737 has 28 MA's), (Start: 8 @42770 has 1 MA's), (24, 42887), (33, 43010), (34, 43022),

Gene: Stayer_66 Start: 42740, Stop: 43051, Start Num: 7
Candidate Starts for Stayer_66:

(2, 42698), (Start: 7 @42740 has 28 MA's), (Start: 8 @42773 has 1 MA's), (24, 42890), (33, 43013), (34, 43025),

Gene: Synopsis_62 Start: 44739, Stop: 45053, Start Num: 6

Candidate Starts for Synopsis_62:

(Start: 6 @44739 has 13 MA's), (11, 44808), (22, 44871), (28, 44922),

Gene: Tatanka_59 Start: 44875, Stop: 45189, Start Num: 6

Candidate Starts for Tatanka_59:

(Start: 6 @44875 has 13 MA's), (11, 44944), (22, 45007), (28, 45058),

Gene: Teacup_65 Start: 45308, Stop: 45619, Start Num: 7

Candidate Starts for Teacup_65:

(Start: 7 @45308 has 28 MA's), (11, 45374), (15, 45398), (22, 45437), (25, 45461),

Gene: Tenno_64 Start: 45392, Stop: 45706, Start Num: 6

Candidate Starts for Tenno_64:

(Start: 6 @45392 has 13 MA's), (11, 45461), (25, 45548), (28, 45575),

Gene: Tokki_73 Start: 45503, Stop: 45790, Start Num: 7

Candidate Starts for Tokki_73:

(Start: 7 @45503 has 28 MA's), (11, 45542), (19, 45593), (29, 45677), (32, 45749),

Gene: Truckee_65 Start: 45012, Stop: 45290, Start Num: 7

Candidate Starts for Truckee_65:

(Start: 7 @45012 has 28 MA's), (11, 45051), (19, 45096), (32, 45249),

Gene: Trustiboi_63 Start: 44994, Stop: 45308, Start Num: 6

Candidate Starts for Trustiboi_63:

(Start: 6 @44994 has 13 MA's), (11, 45063), (18, 45108), (22, 45126), (28, 45177),

Gene: Wilde_54 Start: 41249, Stop: 40941, Start Num: 7

Candidate Starts for Wilde_54:

(Start: 7 @41249 has 28 MA's), (13, 41177), (14, 41174), (26, 41093), (27, 41087), (28, 41069),