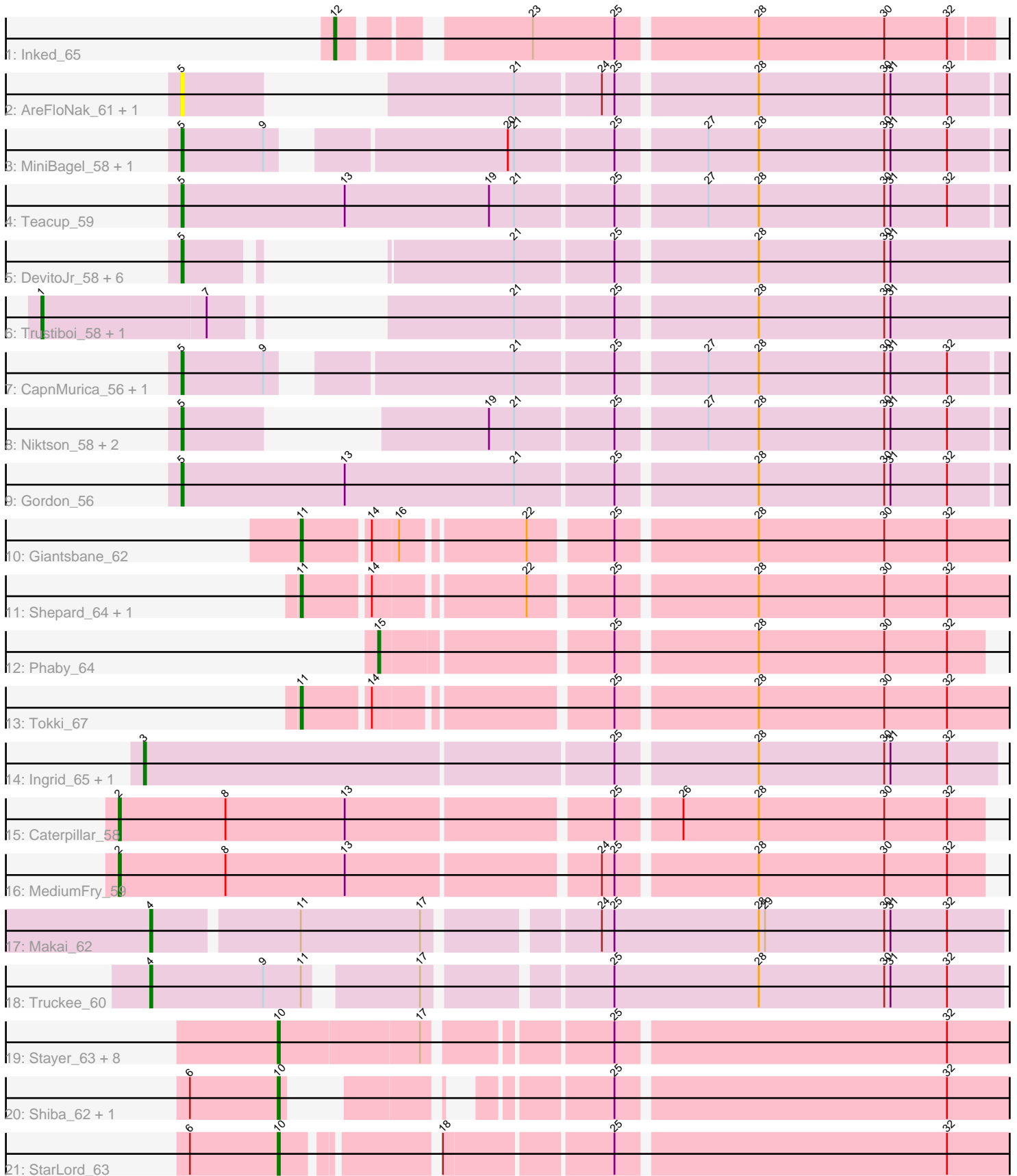


Pham 194124



Note: Tracks are now grouped by subcluster and scaled. Switching in subcluster is indicated by changes in track color. Track scale is now set by default to display the region 30 bp upstream of start 1 to 30 bp downstream of the last possible start. If this default region is judged to be packed too tightly with annotated starts, the track will be further scaled to only show that region of the ORF with annotated starts. This action will be indicated by adding "Zoomed" to the title. For starts, yellow indicates the location of called starts comprised solely of Glimmer/GeneMark auto-annotations, green indicates the location of called starts with at least 1 manual gene annotation.

Pham 194124 Report

This analysis was run 11/02/24 on database version 579.

Pham number 194124 has 44 members, 4 are drafts.

Phages represented in each track:

- Track 1 : Inked_65
- Track 2 : AreFloNak_61, Nivinsha_60
- Track 3 : MiniBagel_58, Issa_59
- Track 4 : Teacup_59
- Track 5 : DevitoJr_58, Breylor17_58, CastorTray_62, Tatanka_55, Nightmare_60, Synopsis_57, Darby_57
- Track 6 : Trustiboi_58, ScienceWizSam_59
- Track 7 : CapnMurica_56, Tenno_59
- Track 8 : Niktson_58, ElephantMan_58, Brunswick_59
- Track 9 : Gordon_56
- Track 10 : Giantsbane_62
- Track 11 : Shepard_64, LilHuddy_63
- Track 12 : Phaby_64
- Track 13 : Tokki_67
- Track 14 : Ingrid_65, Loretta_62
- Track 15 : Caterpillar_58
- Track 16 : MediumFry_59
- Track 17 : Makai_62
- Track 18 : Truckee_60
- Track 19 : Stayer_63, DoctorPepper_62, Sloopyjoe_63, Linda_63, BronxBay_63, Michelle_63, Salk_63, MrAaronian_63, Djungelskog_62
- Track 20 : Shiba_62, Raunak_64
- Track 21 : StarLord_63

Summary of Final Annotations (See graph section above for start numbers):

The start number called the most often in the published annotations is 5, it was called in 15 of the 40 non-draft genes in the pham.

Genes that call this "Most Annotated" start:

- AreFloNak_61, Breylor17_58, Brunswick_59, CapnMurica_56, CastorTray_62, Darby_57, DevitoJr_58, ElephantMan_58, Gordon_56, Issa_59, MiniBagel_58, Nightmare_60, Niktson_58, Nivinsha_60, Synopsis_57, Tatanka_55, Teacup_59, Tenno_59,

Genes that have the "Most Annotated" start but do not call it:

-

Genes that do not have the "Most Annotated" start:

- BronxBay_63, Caterpillar_58, Djungelskog_62, DoctorPepper_62, Giantsbane_62, Ingrid_65, Inked_65, LilHuddy_63, Linda_63, Loretta_62, Makai_62, MediumFry_59, Michelle_63, MrAaronian_63, Phaby_64, Raunak_64, Salk_63, ScienceWizSam_59, Shepard_64, Shiba_62, Sloopyjoe_63, StarLord_63, Stayer_63, Tokki_67, Truckee_60, Trustiboi_58,

Summary by start number:

Start 1:

- Found in 2 of 44 (4.5%) of genes in pham
- Manual Annotations of this start: 2 of 40
- Called 100.0% of time when present
- Phage (with cluster) where this start called: ScienceWizSam_59 (AU1), Trustiboi_58 (AU1),

Start 2:

- Found in 2 of 44 (4.5%) of genes in pham
- Manual Annotations of this start: 2 of 40
- Called 100.0% of time when present
- Phage (with cluster) where this start called: Caterpillar_58 (AU4), MediumFry_59 (AU4),

Start 3:

- Found in 2 of 44 (4.5%) of genes in pham
- Manual Annotations of this start: 2 of 40
- Called 100.0% of time when present
- Phage (with cluster) where this start called: Ingrid_65 (AU3), Loretta_62 (AU3),

Start 4:

- Found in 2 of 44 (4.5%) of genes in pham
- Manual Annotations of this start: 2 of 40
- Called 100.0% of time when present
- Phage (with cluster) where this start called: Makai_62 (AU5), Truckee_60 (AU5),

Start 5:

- Found in 18 of 44 (40.9%) of genes in pham
- Manual Annotations of this start: 15 of 40
- Called 100.0% of time when present
- Phage (with cluster) where this start called: AreFloNak_61 (AU1), Breylor17_58 (AU1), Brunswick_59 (AU1), CapnMurica_56 (AU1), CastorTray_62 (AU1), Darby_57 (AU1), DevitoJr_58 (AU1), ElephantMan_58 (AU1), Gordon_56 (AU1), Issa_59 (AU1), MiniBagel_58 (AU1), Nightmare_60 (AU1), Niktson_58 (AU1), Nivinsha_60 (AU1), Synepsis_57 (AU1), Tatanka_55 (AU1), Teacup_59 (AU1), Tenno_59 (AU1),

Start 10:

- Found in 12 of 44 (27.3%) of genes in pham
- Manual Annotations of this start: 11 of 40
- Called 100.0% of time when present

- Phage (with cluster) where this start called: BronxBay_63 (AW), Djungelskog_62 (AW), DoctorPepper_62 (AW), Linda_63 (AW), Michelle_63 (AW), MrAaronian_63 (AW), Raunak_64 (AW), Salk_63 (AW), Shiba_62 (AW), Sloopyjoe_63 (AW), StarLord_63 (AW), Stayer_63 (AW),

Start 11:

- Found in 6 of 44 (13.6%) of genes in pham
- Manual Annotations of this start: 4 of 40
- Called 66.7% of time when present
- Phage (with cluster) where this start called: Giantsbane_62 (AU2), LilHuddy_63 (AU2), Shepard_64 (AU2), Tokki_67 (AU2),

Start 12:

- Found in 1 of 44 (2.3%) of genes in pham
- Manual Annotations of this start: 1 of 40
- Called 100.0% of time when present
- Phage (with cluster) where this start called: Inked_65 (AU),

Start 15:

- Found in 1 of 44 (2.3%) of genes in pham
- Manual Annotations of this start: 1 of 40
- Called 100.0% of time when present
- Phage (with cluster) where this start called: Phaby_64 (AU2),

Summary by clusters:

There are 7 clusters represented in this pham: AU1, AU3, AU2, AU, AU4, AW, AU5,

Info for manual annotations of cluster AU:

- Start number 12 was manually annotated 1 time for cluster AU.

Info for manual annotations of cluster AU1:

- Start number 1 was manually annotated 2 times for cluster AU1.
- Start number 5 was manually annotated 15 times for cluster AU1.

Info for manual annotations of cluster AU2:

- Start number 11 was manually annotated 4 times for cluster AU2.
- Start number 15 was manually annotated 1 time for cluster AU2.

Info for manual annotations of cluster AU3:

- Start number 3 was manually annotated 2 times for cluster AU3.

Info for manual annotations of cluster AU4:

- Start number 2 was manually annotated 2 times for cluster AU4.

Info for manual annotations of cluster AU5:

- Start number 4 was manually annotated 2 times for cluster AU5.

Info for manual annotations of cluster AW:

- Start number 10 was manually annotated 11 times for cluster AW.

Gene Information:

Gene: AreFloNak_61 Start: 42859, Stop: 43182, Start Num: 5

Candidate Starts for AreFloNak_61:

(Start: 5 @42859 has 15 MA's), (21, 42958), (24, 42997), (25, 43003), (28, 43066), (30, 43126), (31, 43129), (32, 43156),

Gene: Breylor17_58 Start: 43432, Stop: 43758, Start Num: 5

Candidate Starts for Breylor17_58:

(Start: 5 @43432 has 15 MA's), (21, 43531), (25, 43576), (28, 43639), (30, 43699), (31, 43702),

Gene: BronxBay_63 Start: 41552, Stop: 41884, Start Num: 10

Candidate Starts for BronxBay_63:

(Start: 10 @41552 has 11 MA's), (17, 41618), (25, 41696), (32, 41849),

Gene: Brunswick_59 Start: 42729, Stop: 43055, Start Num: 5

Candidate Starts for Brunswick_59:

(Start: 5 @42729 has 15 MA's), (19, 42819), (21, 42831), (25, 42876), (27, 42915), (28, 42939), (30, 42999), (31, 43002), (32, 43029),

Gene: CapnMurica_56 Start: 43585, Stop: 43947, Start Num: 5

Candidate Starts for CapnMurica_56:

(Start: 5 @43585 has 15 MA's), (9, 43624), (21, 43723), (25, 43768), (27, 43807), (28, 43831), (30, 43891), (31, 43894), (32, 43921),

Gene: CastorTray_62 Start: 43620, Stop: 43946, Start Num: 5

Candidate Starts for CastorTray_62:

(Start: 5 @43620 has 15 MA's), (21, 43719), (25, 43764), (28, 43827), (30, 43887), (31, 43890),

Gene: Caterpillar_58 Start: 42467, Stop: 42865, Start Num: 2

Candidate Starts for Caterpillar_58:

(Start: 2 @42467 has 2 MA's), (8, 42518), (13, 42575), (25, 42695), (26, 42722), (28, 42758), (30, 42818), (32, 42848),

Gene: Darby_57 Start: 42676, Stop: 42993, Start Num: 5

Candidate Starts for Darby_57:

(Start: 5 @42676 has 15 MA's), (21, 42766), (25, 42811), (28, 42874), (30, 42934), (31, 42937),

Gene: DevitoJr_58 Start: 43062, Stop: 43379, Start Num: 5

Candidate Starts for DevitoJr_58:

(Start: 5 @43062 has 15 MA's), (21, 43152), (25, 43197), (28, 43260), (30, 43320), (31, 43323),

Gene: Djungelskog_62 Start: 41551, Stop: 41883, Start Num: 10

Candidate Starts for Djungelskog_62:

(Start: 10 @41551 has 11 MA's), (17, 41617), (25, 41695), (32, 41848),

Gene: DoctorPepper_62 Start: 41256, Stop: 41588, Start Num: 10

Candidate Starts for DoctorPepper_62:

(Start: 10 @41256 has 11 MA's), (17, 41322), (25, 41400), (32, 41553),

Gene: ElephantMan_58 Start: 43359, Stop: 43685, Start Num: 5

Candidate Starts for ElephantMan_58:

(Start: 5 @43359 has 15 MA's), (19, 43449), (21, 43461), (25, 43506), (27, 43545), (28, 43569), (30, 43629), (31, 43632), (32, 43659),

Gene: Giantsbane_62 Start: 42221, Stop: 42541, Start Num: 11

Candidate Starts for Giantsbane_62:

(Start: 11 @42221 has 4 MA's), (14, 42251), (16, 42263), (22, 42317), (25, 42353), (28, 42416), (30, 42476), (32, 42506),

Gene: Gordon_56 Start: 43483, Stop: 43866, Start Num: 5

Candidate Starts for Gordon_56:

(Start: 5 @43483 has 15 MA's), (13, 43561), (21, 43642), (25, 43687), (28, 43750), (30, 43810), (31, 43813), (32, 43840),

Gene: Ingrid_65 Start: 43339, Stop: 43734, Start Num: 3

Candidate Starts for Ingrid_65:

(Start: 3 @43339 has 2 MA's), (25, 43558), (28, 43621), (30, 43681), (31, 43684), (32, 43711),

Gene: Inked_65 Start: 44293, Stop: 44580, Start Num: 12

Candidate Starts for Inked_65:

(Start: 12 @44293 has 1 MA's), (23, 44368), (25, 44407), (28, 44470), (30, 44530), (32, 44560),

Gene: Issa_59 Start: 42679, Stop: 43041, Start Num: 5

Candidate Starts for Issa_59:

(Start: 5 @42679 has 15 MA's), (9, 42718), (20, 42814), (21, 42817), (25, 42862), (27, 42901), (28, 42925), (30, 42985), (31, 42988), (32, 43015),

Gene: LilHuddy_63 Start: 43331, Stop: 43651, Start Num: 11

Candidate Starts for LilHuddy_63:

(Start: 11 @43331 has 4 MA's), (14, 43361), (22, 43427), (25, 43463), (28, 43526), (30, 43586), (32, 43616),

Gene: Linda_63 Start: 41549, Stop: 41881, Start Num: 10

Candidate Starts for Linda_63:

(Start: 10 @41549 has 11 MA's), (17, 41615), (25, 41693), (32, 41846),

Gene: Loretta_62 Start: 43339, Stop: 43734, Start Num: 3

Candidate Starts for Loretta_62:

(Start: 3 @43339 has 2 MA's), (25, 43558), (28, 43621), (30, 43681), (31, 43684), (32, 43711),

Gene: Makai_62 Start: 43423, Stop: 43809, Start Num: 4

Candidate Starts for Makai_62:

(Start: 4 @43423 has 2 MA's), (Start: 11 @43489 has 4 MA's), (17, 43546), (24, 43618), (25, 43624), (28, 43693), (29, 43696), (30, 43753), (31, 43756), (32, 43783),

Gene: MediumFry_59 Start: 42756, Stop: 43154, Start Num: 2

Candidate Starts for MediumFry_59:

(Start: 2 @42756 has 2 MA's), (8, 42807), (13, 42864), (24, 42978), (25, 42984), (28, 43047), (30, 43107), (32, 43137),

Gene: Michelle_63 Start: 41551, Stop: 41883, Start Num: 10

Candidate Starts for Michelle_63:

(Start: 10 @41551 has 11 MA's), (17, 41617), (25, 41695), (32, 41848),

Gene: MiniBagel_58 Start: 43567, Stop: 43929, Start Num: 5

Candidate Starts for MiniBagel_58:

(Start: 5 @43567 has 15 MA's), (9, 43606), (20, 43702), (21, 43705), (25, 43750), (27, 43789), (28, 43813), (30, 43873), (31, 43876), (32, 43903),

Gene: MrAaronian_63 Start: 41551, Stop: 41883, Start Num: 10

Candidate Starts for MrAaronian_63:

(Start: 10 @41551 has 11 MA's), (17, 41617), (25, 41695), (32, 41848),

Gene: Nightmare_60 Start: 43904, Stop: 44227, Start Num: 5

Candidate Starts for Nightmare_60:

(Start: 5 @43904 has 15 MA's), (21, 44003), (25, 44048), (28, 44111), (30, 44171), (31, 44174),

Gene: Niktson_58 Start: 43359, Stop: 43685, Start Num: 5

Candidate Starts for Niktson_58:

(Start: 5 @43359 has 15 MA's), (19, 43449), (21, 43461), (25, 43506), (27, 43545), (28, 43569), (30, 43629), (31, 43632), (32, 43659),

Gene: Nivinsha_60 Start: 42859, Stop: 43182, Start Num: 5

Candidate Starts for Nivinsha_60:

(Start: 5 @42859 has 15 MA's), (21, 42958), (24, 42997), (25, 43003), (28, 43066), (30, 43126), (31, 43129), (32, 43156),

Gene: Phaby_64 Start: 43940, Stop: 44212, Start Num: 15

Candidate Starts for Phaby_64:

(Start: 15 @43940 has 1 MA's), (25, 44042), (28, 44105), (30, 44165), (32, 44195),

Gene: Raunak_64 Start: 41249, Stop: 41539, Start Num: 10

Candidate Starts for Raunak_64:

(6, 41207), (Start: 10 @41249 has 11 MA's), (25, 41351), (32, 41504),

Gene: Salk_63 Start: 41549, Stop: 41881, Start Num: 10

Candidate Starts for Salk_63:

(Start: 10 @41549 has 11 MA's), (17, 41615), (25, 41693), (32, 41846),

Gene: ScienceWizSam_59 Start: 42958, Stop: 43344, Start Num: 1

Candidate Starts for ScienceWizSam_59:

(Start: 1 @42958 has 2 MA's), (7, 43036), (21, 43117), (25, 43162), (28, 43225), (30, 43285), (31, 43288),

Gene: Shepard_64 Start: 43190, Stop: 43510, Start Num: 11

Candidate Starts for Shepard_64:

(Start: 11 @43190 has 4 MA's), (14, 43220), (22, 43286), (25, 43322), (28, 43385), (30, 43445), (32, 43475),

Gene: Shiba_62 Start: 41249, Stop: 41539, Start Num: 10

Candidate Starts for Shiba_62:

(6, 41207), (Start: 10 @41249 has 11 MA's), (25, 41351), (32, 41504),

Gene: Sloopyjoe_63 Start: 41553, Stop: 41885, Start Num: 10

Candidate Starts for Sloopyjoe_63:

(Start: 10 @41553 has 11 MA's), (17, 41619), (25, 41697), (32, 41850),

Gene: StarLord_63 Start: 41552, Stop: 41878, Start Num: 10
Candidate Starts for StarLord_63:
(6, 41510), (Start: 10 @41552 has 11 MA's), (18, 41615), (25, 41690), (32, 41843),

Gene: Stayer_63 Start: 41549, Stop: 41881, Start Num: 10
Candidate Starts for Stayer_63:
(Start: 10 @41549 has 11 MA's), (17, 41615), (25, 41693), (32, 41846),

Gene: Synopsis_57 Start: 43026, Stop: 43349, Start Num: 5
Candidate Starts for Synopsis_57:
(Start: 5 @43026 has 15 MA's), (21, 43125), (25, 43170), (28, 43233), (30, 43293), (31, 43296),

Gene: Tatanka_55 Start: 43155, Stop: 43481, Start Num: 5
Candidate Starts for Tatanka_55:
(Start: 5 @43155 has 15 MA's), (21, 43254), (25, 43299), (28, 43362), (30, 43422), (31, 43425),

Gene: Teacup_59 Start: 43381, Stop: 43764, Start Num: 5
Candidate Starts for Teacup_59:
(Start: 5 @43381 has 15 MA's), (13, 43459), (19, 43528), (21, 43540), (25, 43585), (27, 43624), (28, 43648), (30, 43708), (31, 43711), (32, 43738),

Gene: Tenno_59 Start: 43640, Stop: 44002, Start Num: 5
Candidate Starts for Tenno_59:
(Start: 5 @43640 has 15 MA's), (9, 43679), (21, 43778), (25, 43823), (27, 43862), (28, 43886), (30, 43946), (31, 43949), (32, 43976),

Gene: Tokki_67 Start: 43544, Stop: 43864, Start Num: 11
Candidate Starts for Tokki_67:
(Start: 11 @43544 has 4 MA's), (14, 43574), (25, 43676), (28, 43739), (30, 43799), (32, 43829),

Gene: Truckee_60 Start: 43213, Stop: 43593, Start Num: 4
Candidate Starts for Truckee_60:
(Start: 4 @43213 has 2 MA's), (9, 43267), (Start: 11 @43285 has 4 MA's), (17, 43330), (25, 43408), (28, 43477), (30, 43537), (31, 43540), (32, 43567),

Gene: Trustiboi_58 Start: 43218, Stop: 43604, Start Num: 1
Candidate Starts for Trustiboi_58:
(Start: 1 @43218 has 2 MA's), (7, 43296), (21, 43377), (25, 43422), (28, 43485), (30, 43545), (31, 43548),