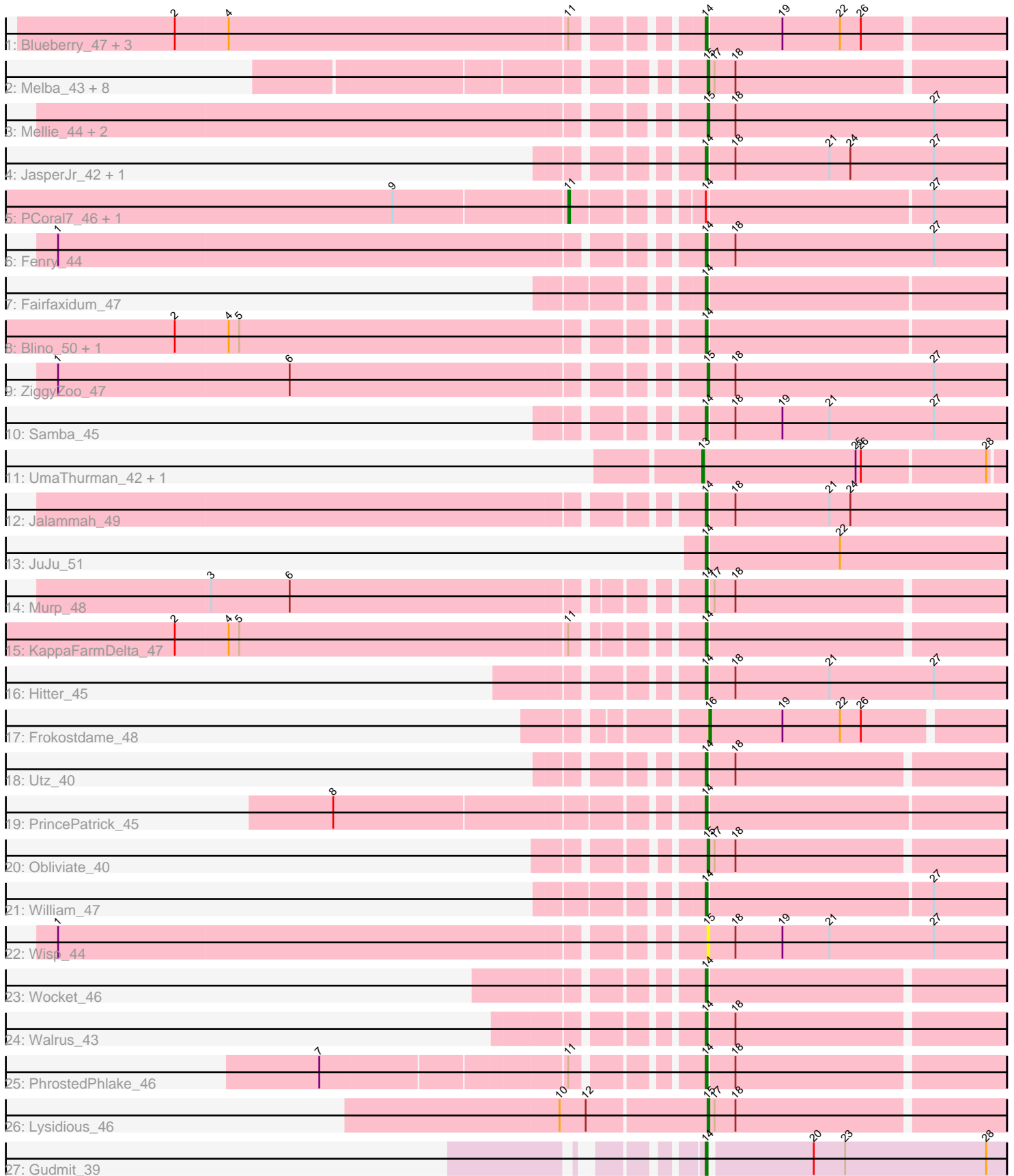


Pham 194125



Note: Tracks are now grouped by subcluster and scaled. Switching in subcluster is indicated by changes in track color. Track scale is now set by default to display the region 30 bp upstream of start 1 to 30 bp downstream of the last possible start. If this default region is judged to be packed too tightly with annotated starts, the track will be further scaled to only show that region of the ORF with annotated starts. This action will be indicated by adding "Zoomed" to the title. For starts, yellow indicates the location of called starts comprised solely of Glimmer/GeneMark auto-annotations, green indicates the location of called starts with at least 1 manual gene annotation.

Pham 194125 Report

This analysis was run 11/02/24 on database version 579.

Pham number 194125 has 44 members, 1 are drafts.

Phages represented in each track:

- Track 1 : Blueberry_47, MissRona_48, Gambino_50, Azula_48
- Track 2 : Melba_43, Delian_47, CaptainKirk2_44, Petra_41, Zarbodnamra_43, Barco_42, Archis_47, BlingBling_41, MintFen_44
- Track 3 : Mellie_44, Malachai_45, Begonia_45
- Track 4 : JasperJr_42, Guacamole_42
- Track 5 : PCoral7_46, Toast_46
- Track 6 : Fenry_44
- Track 7 : Fairfaxidum_47
- Track 8 : Blino_50, CarolAnn_49
- Track 9 : ZiggyZoo_47
- Track 10 : Samba_45
- Track 11 : UmaThurman_42, Pipp_45
- Track 12 : Jalammah_49
- Track 13 : JuJu_51
- Track 14 : Murp_48
- Track 15 : KappaFarmDelta_47
- Track 16 : Hitter_45
- Track 17 : Frokostdame_48
- Track 18 : Utz_40
- Track 19 : PrincePatrick_45
- Track 20 : Obliviate_40
- Track 21 : William_47
- Track 22 : Wisp_44
- Track 23 : Wocket_46
- Track 24 : Walrus_43
- Track 25 : PhrostedPhlake_46
- Track 26 : Lysidious_46
- Track 27 : Gudmit_39

Summary of Final Annotations (See graph section above for start numbers):

The start number called the most often in the published annotations is 14, it was called in 23 of the 43 non-draft genes in the pham.

Genes that call this "Most Annotated" start:

- Azula_48, Blino_50, Blueberry_47, CarolAnn_49, Fairfaxidum_47, Fenry_44, Gambino_50, Guacamole_42, Gudmit_39, Hitter_45, Jalammah_49, JasperJr_42, JuJu_51, KappaFarmDelta_47, MissRona_48, Murp_48, PhrostedPhlake_46, PrincePatrick_45, Samba_45, Utz_40, Walrus_43, William_47, Wocket_46,

Genes that have the "Most Annotated" start but do not call it:

- PCoral7_46, Toast_46,

Genes that do not have the "Most Annotated" start:

- Archis_47, Barco_42, Begonia_45, BlingBling_41, CaptainKirk2_44, Delian_47, Frokostdame_48, Lysidious_46, Malachai_45, Melba_43, Mellie_44, MintFen_44, Obliviate_40, Petra_41, Pipp_45, UmaThurman_42, Wisp_44, Zarbodnamra_43, ZiggyZoo_47,

Summary by start number:

Start 11:

- Found in 8 of 44 (18.2%) of genes in pham
- Manual Annotations of this start: 2 of 43
- Called 25.0% of time when present
- Phage (with cluster) where this start called: PCoral7_46 (CV), Toast_46 (CV),

Start 13:

- Found in 2 of 44 (4.5%) of genes in pham
- Manual Annotations of this start: 2 of 43
- Called 100.0% of time when present
- Phage (with cluster) where this start called: Pipp_45 (CV), UmaThurman_42 (CV),

Start 14:

- Found in 25 of 44 (56.8%) of genes in pham
- Manual Annotations of this start: 23 of 43
- Called 92.0% of time when present
- Phage (with cluster) where this start called: Azula_48 (CV), Blino_50 (CV), Blueberry_47 (CV), CarolAnn_49 (CV), Fairfaxidum_47 (CV), Fenry_44 (CV), Gambino_50 (CV), Guacamole_42 (CV), Gudmit_39 (singleton), Hitter_45 (CV), Jalammah_49 (CV), JasperJr_42 (CV), JuJu_51 (CV), KappaFarmDelta_47 (CV), MissRona_48 (CV), Murp_48 (CV), PhrostedPhlake_46 (CV), PrincePatrick_45 (CV), Samba_45 (CV), Utz_40 (CV), Walrus_43 (CV), William_47 (CV), Wocket_46 (CV),

Start 15:

- Found in 16 of 44 (36.4%) of genes in pham
- Manual Annotations of this start: 15 of 43
- Called 100.0% of time when present
- Phage (with cluster) where this start called: Archis_47 (CV), Barco_42 (CV), Begonia_45 (CV), BlingBling_41 (CV), CaptainKirk2_44 (CV), Delian_47 (CV), Lysidious_46 (CV), Malachai_45 (CV), Melba_43 (CV), Mellie_44 (CV), MintFen_44 (CV), Obliviate_40 (CV), Petra_41 (CV), Wisp_44 (CV), Zarbodnamra_43 (CV), ZiggyZoo_47 (CV),

Start 16:

- Found in 1 of 44 (2.3%) of genes in pham
- Manual Annotations of this start: 1 of 43

- Called 100.0% of time when present
- Phage (with cluster) where this start called: Frokostdame_48 (CV),

Summary by clusters:

There are 2 clusters represented in this pham: singleton, CV,

Info for manual annotations of cluster CV:

- Start number 11 was manually annotated 2 times for cluster CV.
- Start number 13 was manually annotated 2 times for cluster CV.
- Start number 14 was manually annotated 22 times for cluster CV.
- Start number 15 was manually annotated 15 times for cluster CV.
- Start number 16 was manually annotated 1 time for cluster CV.

Gene Information:

Gene: Archis_47 Start: 33441, Stop: 33605, Start Num: 15

Candidate Starts for Archis_47:

(Start: 15 @33441 has 15 MA's), (17, 33444), (18, 33456),

Gene: Azula_48 Start: 36031, Stop: 36195, Start Num: 14

Candidate Starts for Azula_48:

(2, 35752), (4, 35782), (Start: 11 @35974 has 2 MA's), (Start: 14 @36031 has 23 MA's), (19, 36073), (22, 36106), (26, 36118),

Gene: Barco_42 Start: 32491, Stop: 32655, Start Num: 15

Candidate Starts for Barco_42:

(Start: 15 @32491 has 15 MA's), (17, 32494), (18, 32506),

Gene: Begonia_45 Start: 36146, Stop: 36316, Start Num: 15

Candidate Starts for Begonia_45:

(Start: 15 @36146 has 15 MA's), (18, 36161), (27, 36275),

Gene: BlingBling_41 Start: 33454, Stop: 33618, Start Num: 15

Candidate Starts for BlingBling_41:

(Start: 15 @33454 has 15 MA's), (17, 33457), (18, 33469),

Gene: Blino_50 Start: 39330, Stop: 39497, Start Num: 14

Candidate Starts for Blino_50:

(2, 39048), (4, 39078), (5, 39084), (Start: 14 @39330 has 23 MA's),

Gene: Blueberry_47 Start: 36031, Stop: 36195, Start Num: 14

Candidate Starts for Blueberry_47:

(2, 35752), (4, 35782), (Start: 11 @35974 has 2 MA's), (Start: 14 @36031 has 23 MA's), (19, 36073), (22, 36106), (26, 36118),

Gene: CaptainKirk2_44 Start: 32739, Stop: 32903, Start Num: 15

Candidate Starts for CaptainKirk2_44:

(Start: 15 @32739 has 15 MA's), (17, 32742), (18, 32754),

Gene: CarolAnn_49 Start: 39329, Stop: 39496, Start Num: 14

Candidate Starts for CarolAnn_49:
(2, 39047), (4, 39077), (5, 39083), (Start: 14 @39329 has 23 MA's),

Gene: Delian_47 Start: 32737, Stop: 32901, Start Num: 15
Candidate Starts for Delian_47:
(Start: 15 @32737 has 15 MA's), (17, 32740), (18, 32752),

Gene: Fairfaxidum_47 Start: 35996, Stop: 36163, Start Num: 14
Candidate Starts for Fairfaxidum_47:
(Start: 14 @35996 has 23 MA's),

Gene: Fenry_44 Start: 35040, Stop: 35210, Start Num: 14
Candidate Starts for Fenry_44:
(1, 34692), (Start: 14 @35040 has 23 MA's), (18, 35055), (27, 35169),

Gene: Frokostdame_48 Start: 35842, Stop: 36006, Start Num: 16
Candidate Starts for Frokostdame_48:
(Start: 16 @35842 has 1 MA's), (19, 35884), (22, 35917), (26, 35929),

Gene: Gambino_50 Start: 36031, Stop: 36195, Start Num: 14
Candidate Starts for Gambino_50:
(2, 35752), (4, 35782), (Start: 11 @35974 has 2 MA's), (Start: 14 @36031 has 23 MA's), (19, 36073),
(22, 36106), (26, 36118),

Gene: Guacamole_42 Start: 33394, Stop: 33564, Start Num: 14
Candidate Starts for Guacamole_42:
(Start: 14 @33394 has 23 MA's), (18, 33409), (21, 33463), (24, 33475), (27, 33523),

Gene: Gudmit_39 Start: 27962, Stop: 28129, Start Num: 14
Candidate Starts for Gudmit_39:
(Start: 14 @27962 has 23 MA's), (20, 28019), (23, 28037), (28, 28118),

Gene: Hitter_45 Start: 33039, Stop: 33209, Start Num: 14
Candidate Starts for Hitter_45:
(Start: 14 @33039 has 23 MA's), (18, 33054), (21, 33108), (27, 33168),

Gene: Jalammah_49 Start: 36356, Stop: 36526, Start Num: 14
Candidate Starts for Jalammah_49:
(Start: 14 @36356 has 23 MA's), (18, 36371), (21, 36425), (24, 36437),

Gene: JasperJr_42 Start: 33394, Stop: 33564, Start Num: 14
Candidate Starts for JasperJr_42:
(Start: 14 @33394 has 23 MA's), (18, 33409), (21, 33463), (24, 33475), (27, 33523),

Gene: JuJu_51 Start: 37183, Stop: 37353, Start Num: 14
Candidate Starts for JuJu_51:
(Start: 14 @37183 has 23 MA's), (22, 37258),

Gene: KappaFarmDelta_47 Start: 33976, Stop: 34140, Start Num: 14
Candidate Starts for KappaFarmDelta_47:
(2, 33697), (4, 33727), (5, 33733), (Start: 11 @33919 has 2 MA's), (Start: 14 @33976 has 23 MA's),

Gene: Lysidious_46 Start: 35415, Stop: 35579, Start Num: 15

Candidate Starts for Lysidious_46:

(10, 35334), (12, 35349), (Start: 15 @35415 has 15 MA's), (17, 35418), (18, 35430),

Gene: Malachai_45 Start: 36146, Stop: 36316, Start Num: 15

Candidate Starts for Malachai_45:

(Start: 15 @36146 has 15 MA's), (18, 36161), (27, 36275),

Gene: Melba_43 Start: 33279, Stop: 33443, Start Num: 15

Candidate Starts for Melba_43:

(Start: 15 @33279 has 15 MA's), (17, 33282), (18, 33294),

Gene: Mellie_44 Start: 33865, Stop: 34035, Start Num: 15

Candidate Starts for Mellie_44:

(Start: 15 @33865 has 15 MA's), (18, 33880), (27, 33994),

Gene: MintFen_44 Start: 33353, Stop: 33517, Start Num: 15

Candidate Starts for MintFen_44:

(Start: 15 @33353 has 15 MA's), (17, 33356), (18, 33368),

Gene: MissRona_48 Start: 36032, Stop: 36196, Start Num: 14

Candidate Starts for MissRona_48:

(2, 35753), (4, 35783), (Start: 11 @35975 has 2 MA's), (Start: 14 @36032 has 23 MA's), (19, 36074), (22, 36107), (26, 36119),

Gene: Murp_48 Start: 37601, Stop: 37765, Start Num: 14

Candidate Starts for Murp_48:

(3, 37343), (6, 37388), (Start: 14 @37601 has 23 MA's), (17, 37604), (18, 37616),

Gene: Obliviate_40 Start: 31641, Stop: 31805, Start Num: 15

Candidate Starts for Obliviate_40:

(Start: 15 @31641 has 15 MA's), (17, 31644), (18, 31656),

Gene: PCoral7_46 Start: 35353, Stop: 35580, Start Num: 11

Candidate Starts for PCoral7_46:

(9, 35257), (Start: 11 @35353 has 2 MA's), (Start: 14 @35413 has 23 MA's), (27, 35539),

Gene: Petra_41 Start: 31999, Stop: 32163, Start Num: 15

Candidate Starts for Petra_41:

(Start: 15 @31999 has 15 MA's), (17, 32002), (18, 32014),

Gene: PhrostedPhlake_46 Start: 33313, Stop: 33477, Start Num: 14

Candidate Starts for PhrostedPhlake_46:

(7, 33121), (Start: 11 @33253 has 2 MA's), (Start: 14 @33313 has 23 MA's), (18, 33328),

Gene: Pipp_45 Start: 33774, Stop: 33941, Start Num: 13

Candidate Starts for Pipp_45:

(Start: 13 @33774 has 2 MA's), (25, 33861), (26, 33864), (28, 33933),

Gene: PrincePatrick_45 Start: 33768, Stop: 33935, Start Num: 14

Candidate Starts for PrincePatrick_45:

(8, 33576), (Start: 14 @33768 has 23 MA's),

Gene: Samba_45 Start: 36251, Stop: 36421, Start Num: 14

Candidate Starts for Samba_45:

(Start: 14 @36251 has 23 MA's), (18, 36266), (19, 36293), (21, 36320), (27, 36380),

Gene: Toast_46 Start: 35353, Stop: 35580, Start Num: 11

Candidate Starts for Toast_46:

(9, 35257), (Start: 11 @35353 has 2 MA's), (Start: 14 @35413 has 23 MA's), (27, 35539),

Gene: UmaThurman_42 Start: 34120, Stop: 34287, Start Num: 13

Candidate Starts for UmaThurman_42:

(Start: 13 @34120 has 2 MA's), (25, 34207), (26, 34210), (28, 34279),

Gene: Utz_40 Start: 34941, Stop: 35105, Start Num: 14

Candidate Starts for Utz_40:

(Start: 14 @34941 has 23 MA's), (18, 34956),

Gene: Walrus_43 Start: 33174, Stop: 33338, Start Num: 14

Candidate Starts for Walrus_43:

(Start: 14 @33174 has 23 MA's), (18, 33189),

Gene: William_47 Start: 35452, Stop: 35619, Start Num: 14

Candidate Starts for William_47:

(Start: 14 @35452 has 23 MA's), (27, 35578),

Gene: Wisp_44 Start: 34993, Stop: 35163, Start Num: 15

Candidate Starts for Wisp_44:

(1, 34645), (Start: 15 @34993 has 15 MA's), (18, 35008), (19, 35035), (21, 35062), (27, 35122),

Gene: Wocket_46 Start: 34143, Stop: 34307, Start Num: 14

Candidate Starts for Wocket_46:

(Start: 14 @34143 has 23 MA's),

Gene: Zarbodnamra_43 Start: 32761, Stop: 32925, Start Num: 15

Candidate Starts for Zarbodnamra_43:

(Start: 15 @32761 has 15 MA's), (17, 32764), (18, 32776),

Gene: ZiggyZoo_47 Start: 36213, Stop: 36383, Start Num: 15

Candidate Starts for ZiggyZoo_47:

(1, 35865), (6, 35997), (Start: 15 @36213 has 15 MA's), (18, 36228), (27, 36342),