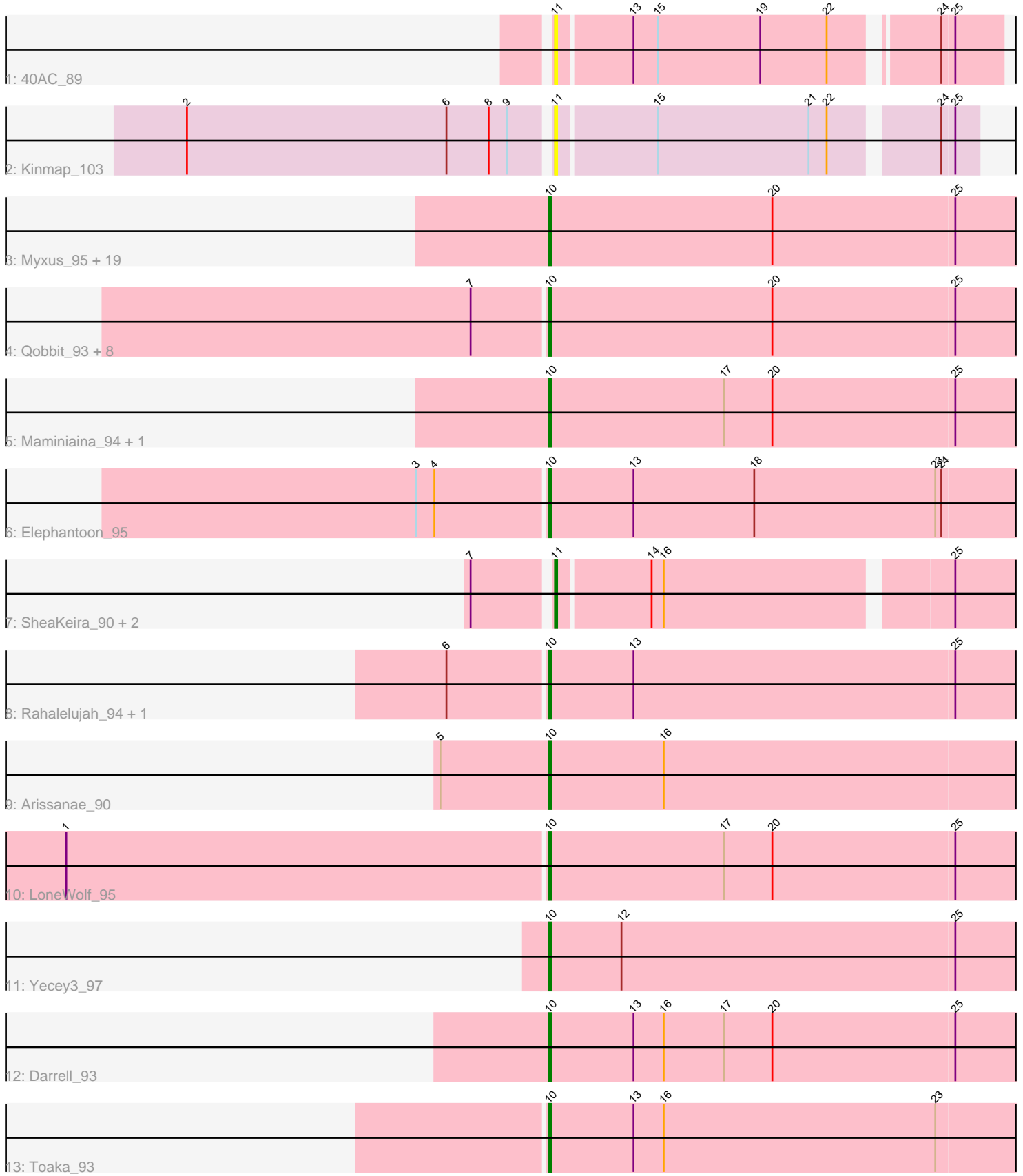


# Pham 194127



Note: Tracks are now grouped by subcluster and scaled. Switching in subcluster is indicated by changes in track color. Track scale is now set by default to display the region 30 bp upstream of start 1 to 30 bp downstream of the last possible start. If this default region is judged to be packed too tightly with annotated starts, the track will be further scaled to only show that region of the ORF with annotated starts. This action will be indicated by adding "Zoomed" to the title. For starts, yellow indicates the location of called starts comprised solely of Glimmer/GeneMark auto-annotations, green indicates the location of called starts with at least 1 manual gene annotation.

## Pham 194127 Report

This analysis was run 11/02/24 on database version 579.

Pham number 194127 has 44 members, 10 are drafts.

Phages represented in each track:

- Track 1 : 40AC\_89
- Track 2 : Kinmap\_103
- Track 3 : Myxus\_95, Horex\_94, Phonnegut\_95, Pioneer\_95, Phaeder\_95, Catalina\_97, Jiawan\_93, Ugenie5\_82, HortumSL17\_96, Tubs\_95, Hanray\_93, Scherzo\_93, PackMan\_90, Beemo\_95, Sachima\_91, Aliter\_88, EdogawaKiddo\_94, RyeScarlet\_96, Onglai\_93, Lillekat\_92
- Track 4 : Qobbit\_93, ExplosioNervosa\_93, EmyBug\_92, Alma\_93, Fayely\_93, Eidsmoe\_93, Conquerage\_93, Priya\_93, Spouty\_93
- Track 5 : Maminiaina\_94, BogosyJay\_94
- Track 6 : Elephantoon\_95
- Track 7 : SheaKeira\_90, Charm\_90, DreamTeam1\_91
- Track 8 : Rahalelujah\_94, Vanisoa\_90
- Track 9 : Arissanae\_90
- Track 10 : LoneWolf\_95
- Track 11 : Yecey3\_97
- Track 12 : Darrell\_93
- Track 13 : Toaka\_93

### ***Summary of Final Annotations (See graph section above for start numbers):***

The start number called the most often in the published annotations is 10, it was called in 31 of the 34 non-draft genes in the pham.

Genes that call this "Most Annotated" start:

- Aliter\_88, Alma\_93, Arissanae\_90, Beemo\_95, BogosyJay\_94, Catalina\_97, Conquerage\_93, Darrell\_93, EdogawaKiddo\_94, Eidsmoe\_93, Elephantoon\_95, EmyBug\_92, ExplosioNervosa\_93, Fayely\_93, Hanray\_93, Horex\_94, HortumSL17\_96, Jiawan\_93, Lillekat\_92, LoneWolf\_95, Maminiaina\_94, Myxus\_95, Onglai\_93, PackMan\_90, Phaeder\_95, Phonnegut\_95, Pioneer\_95, Priya\_93, Qobbit\_93, Rahalelujah\_94, RyeScarlet\_96, Sachima\_91, Scherzo\_93, Spouty\_93, Toaka\_93, Tubs\_95, Ugenie5\_82, Vanisoa\_90, Yecey3\_97,

Genes that have the "Most Annotated" start but do not call it:

-

Genes that do not have the "Most Annotated" start:

- 40AC\_89, Charm\_90, DreamTeam1\_91, Kinmap\_103, SheaKeira\_90,

### Summary by start number:

Start 10:

- Found in 39 of 44 ( 88.6% ) of genes in pham
- Manual Annotations of this start: 31 of 34
- Called 100.0% of time when present
- Phage (with cluster) where this start called: Aliter\_88 (A9), Alma\_93 (A9), Arissanae\_90 (A9), Beemo\_95 (A9), BogosyJay\_94 (A9), Catalina\_97 (A9), Conquerage\_93 (A9), Darrell\_93 (A9), EdogawaKiddo\_94 (A9), Eidsmoe\_93 (A9), Elephantoon\_95 (A9), EmyBug\_92 (A9), ExplosioNervosa\_93 (A9), Fayely\_93 (A9), Hanray\_93 (A9), Halex\_94 (A9), HortumSL17\_96 (A9), Jiawan\_93 (A9), Lilleskat\_92 (A9), LoneWolf\_95 (A9), Maminiaina\_94 (A9), Myxus\_95 (A9), Onglai\_93 (A9), PackMan\_90 (A9), Phaeder\_95 (A9), Phonnegut\_95 (A9), Pioneer\_95 (A9), Priya\_93 (A9), Qobbit\_93 (A9), Rahalelujah\_94 (A9), RyeScarlet\_96 (A9), Sachima\_91 (A9), Scherzo\_93 (A9), Spouty\_93 (A9), Toaka\_93 (A9), Tubs\_95 (A9), Ugenie5\_82 (A9), Vanisoa\_90 (A9), Yecey3\_97 (A9),

Start 11:

- Found in 5 of 44 ( 11.4% ) of genes in pham
- Manual Annotations of this start: 3 of 34
- Called 100.0% of time when present
- Phage (with cluster) where this start called: 40AC\_89 (A17), Charm\_90 (A9), DreamTeam1\_91 (A9), Kinmap\_103 (A21), SheaKeira\_90 (A9),

### Summary by clusters:

There are 3 clusters represented in this pham: A9, A21, A17,

Info for manual annotations of cluster A9:

- Start number 10 was manually annotated 31 times for cluster A9.
- Start number 11 was manually annotated 3 times for cluster A9.

### Gene Information:

Gene: 40AC\_89 Start: 50824, Stop: 50618, Start Num: 11

Candidate Starts for 40AC\_89:

(Start: 11 @50824 has 3 MA's), (13, 50788), (15, 50776), (19, 50725), (22, 50692), (24, 50647), (25, 50641),

Gene: Aliter\_88 Start: 47544, Stop: 47314, Start Num: 10

Candidate Starts for Aliter\_88:

(Start: 10 @47544 has 31 MA's), (20, 47433), (25, 47343),

Gene: Alma\_93 Start: 50375, Stop: 50145, Start Num: 10

Candidate Starts for Alma\_93:

(7, 50411), (Start: 10 @50375 has 31 MA's), (20, 50264), (25, 50174),

Gene: Arissanae\_90 Start: 50239, Stop: 50009, Start Num: 10

Candidate Starts for Arissanae\_90:

(5, 50293), (Start: 10 @50239 has 31 MA's), (16, 50182),

Gene: Beemo\_95 Start: 50377, Stop: 50147, Start Num: 10

Candidate Starts for Beemo\_95:

(Start: 10 @50377 has 31 MA's), (20, 50266), (25, 50176),

Gene: BogosyJay\_94 Start: 50379, Stop: 50149, Start Num: 10

Candidate Starts for BogosyJay\_94:

(Start: 10 @50379 has 31 MA's), (17, 50292), (20, 50268), (25, 50178),

Gene: Catalina\_97 Start: 50491, Stop: 50261, Start Num: 10

Candidate Starts for Catalina\_97:

(Start: 10 @50491 has 31 MA's), (20, 50380), (25, 50290),

Gene: Charm\_90 Start: 49777, Stop: 49556, Start Num: 11

Candidate Starts for Charm\_90:

(7, 49813), (Start: 11 @49777 has 3 MA's), (14, 49732), (16, 49726), (25, 49591),

Gene: Conquerage\_93 Start: 50151, Stop: 49921, Start Num: 10

Candidate Starts for Conquerage\_93:

(7, 50187), (Start: 10 @50151 has 31 MA's), (20, 50040), (25, 49950),

Gene: Darrell\_93 Start: 49542, Stop: 49312, Start Num: 10

Candidate Starts for Darrell\_93:

(Start: 10 @49542 has 31 MA's), (13, 49500), (16, 49485), (17, 49455), (20, 49431), (25, 49341),

Gene: DreamTeam1\_91 Start: 49748, Stop: 49527, Start Num: 11

Candidate Starts for DreamTeam1\_91:

(7, 49784), (Start: 11 @49748 has 3 MA's), (14, 49703), (16, 49697), (25, 49562),

Gene: EdogawaKiddo\_94 Start: 50453, Stop: 50223, Start Num: 10

Candidate Starts for EdogawaKiddo\_94:

(Start: 10 @50453 has 31 MA's), (20, 50342), (25, 50252),

Gene: Eidsmoe\_93 Start: 50144, Stop: 49914, Start Num: 10

Candidate Starts for Eidsmoe\_93:

(7, 50180), (Start: 10 @50144 has 31 MA's), (20, 50033), (25, 49943),

Gene: Elephantoon\_95 Start: 50266, Stop: 50036, Start Num: 10

Candidate Starts for Elephantoon\_95:

(3, 50329), (4, 50320), (Start: 10 @50266 has 31 MA's), (13, 50224), (18, 50164), (23, 50074), (24, 50071),

Gene: EmyBug\_92 Start: 50146, Stop: 49916, Start Num: 10

Candidate Starts for EmyBug\_92:

(7, 50182), (Start: 10 @50146 has 31 MA's), (20, 50035), (25, 49945),

Gene: ExplosioNervosa\_93 Start: 50212, Stop: 49982, Start Num: 10

Candidate Starts for ExplosioNervosa\_93:

(7, 50248), (Start: 10 @50212 has 31 MA's), (20, 50101), (25, 50011),

Gene: Fayely\_93 Start: 50120, Stop: 49890, Start Num: 10

Candidate Starts for Fayely\_93:

(7, 50156), (Start: 10 @50120 has 31 MA's), (20, 50009), (25, 49919),

Gene: Hanray\_93 Start: 50442, Stop: 50212, Start Num: 10

Candidate Starts for Hanray\_93:

(Start: 10 @50442 has 31 MA's), (20, 50331), (25, 50241),

Gene: Horex\_94 Start: 50455, Stop: 50225, Start Num: 10

Candidate Starts for Horex\_94:

(Start: 10 @50455 has 31 MA's), (20, 50344), (25, 50254),

Gene: HortumSL17\_96 Start: 50489, Stop: 50259, Start Num: 10

Candidate Starts for HortumSL17\_96:

(Start: 10 @50489 has 31 MA's), (20, 50378), (25, 50288),

Gene: Jiawan\_93 Start: 50472, Stop: 50242, Start Num: 10

Candidate Starts for Jiawan\_93:

(Start: 10 @50472 has 31 MA's), (20, 50361), (25, 50271),

Gene: Kinmap\_103 Start: 51048, Stop: 50851, Start Num: 11

Candidate Starts for Kinmap\_103:

(2, 51225), (6, 51096), (8, 51075), (9, 51066), (Start: 11 @51048 has 3 MA's), (15, 51000), (21, 50925), (22, 50916), (24, 50868), (25, 50862),

Gene: Lilleskat\_92 Start: 50443, Stop: 50213, Start Num: 10

Candidate Starts for Lilleskat\_92:

(Start: 10 @50443 has 31 MA's), (20, 50332), (25, 50242),

Gene: LoneWolf\_95 Start: 50480, Stop: 50250, Start Num: 10

Candidate Starts for LoneWolf\_95:

(1, 50717), (Start: 10 @50480 has 31 MA's), (17, 50393), (20, 50369), (25, 50279),

Gene: Maminiaina\_94 Start: 50361, Stop: 50131, Start Num: 10

Candidate Starts for Maminiaina\_94:

(Start: 10 @50361 has 31 MA's), (17, 50274), (20, 50250), (25, 50160),

Gene: Myxus\_95 Start: 50489, Stop: 50259, Start Num: 10

Candidate Starts for Myxus\_95:

(Start: 10 @50489 has 31 MA's), (20, 50378), (25, 50288),

Gene: Onglai\_93 Start: 48644, Stop: 48414, Start Num: 10

Candidate Starts for Onglai\_93:

(Start: 10 @48644 has 31 MA's), (20, 48533), (25, 48443),

Gene: PackMan\_90 Start: 48403, Stop: 48173, Start Num: 10

Candidate Starts for PackMan\_90:

(Start: 10 @48403 has 31 MA's), (20, 48292), (25, 48202),

Gene: Phaeder\_95 Start: 50364, Stop: 50134, Start Num: 10

Candidate Starts for Phaeder\_95:

(Start: 10 @50364 has 31 MA's), (20, 50253), (25, 50163),

Gene: Phonnegut\_95 Start: 50376, Stop: 50146, Start Num: 10

Candidate Starts for Phonnegut\_95:

(Start: 10 @50376 has 31 MA's), (20, 50265), (25, 50175),

Gene: Pioneer\_95 Start: 50376, Stop: 50146, Start Num: 10

Candidate Starts for Pioneer\_95:

(Start: 10 @50376 has 31 MA's), (20, 50265), (25, 50175),

Gene: Priya\_93 Start: 50147, Stop: 49917, Start Num: 10

Candidate Starts for Priya\_93:

(7, 50183), (Start: 10 @50147 has 31 MA's), (20, 50036), (25, 49946),

Gene: Qobbit\_93 Start: 50109, Stop: 49879, Start Num: 10

Candidate Starts for Qobbit\_93:

(7, 50145), (Start: 10 @50109 has 31 MA's), (20, 49998), (25, 49908),

Gene: Rahalelujah\_94 Start: 49952, Stop: 49722, Start Num: 10

Candidate Starts for Rahalelujah\_94:

(6, 50000), (Start: 10 @49952 has 31 MA's), (13, 49910), (25, 49751),

Gene: RyeScarlet\_96 Start: 50362, Stop: 50132, Start Num: 10

Candidate Starts for RyeScarlet\_96:

(Start: 10 @50362 has 31 MA's), (20, 50251), (25, 50161),

Gene: Sachima\_91 Start: 50390, Stop: 50160, Start Num: 10

Candidate Starts for Sachima\_91:

(Start: 10 @50390 has 31 MA's), (20, 50279), (25, 50189),

Gene: Scherzo\_93 Start: 50407, Stop: 50177, Start Num: 10

Candidate Starts for Scherzo\_93:

(Start: 10 @50407 has 31 MA's), (20, 50296), (25, 50206),

Gene: SheaKeira\_90 Start: 49660, Stop: 49439, Start Num: 11

Candidate Starts for SheaKeira\_90:

(7, 49696), (Start: 11 @49660 has 3 MA's), (14, 49615), (16, 49609), (25, 49474),

Gene: Spouty\_93 Start: 50146, Stop: 49916, Start Num: 10

Candidate Starts for Spouty\_93:

(7, 50182), (Start: 10 @50146 has 31 MA's), (20, 50035), (25, 49945),

Gene: Toaka\_93 Start: 50289, Stop: 50059, Start Num: 10

Candidate Starts for Toaka\_93:

(Start: 10 @50289 has 31 MA's), (13, 50247), (16, 50232), (23, 50097),

Gene: Tubs\_95 Start: 50364, Stop: 50134, Start Num: 10

Candidate Starts for Tubs\_95:

(Start: 10 @50364 has 31 MA's), (20, 50253), (25, 50163),

Gene: Ugenie5\_82 Start: 47851, Stop: 47621, Start Num: 10

Candidate Starts for Ugenie5\_82:

(Start: 10 @47851 has 31 MA's), (20, 47740), (25, 47650),

Gene: Vanisoa\_90 Start: 50582, Stop: 50352, Start Num: 10

Candidate Starts for Vanisoa\_90:

(6, 50630), (Start: 10 @50582 has 31 MA's), (13, 50540), (25, 50381),

Gene: Yecey3\_97 Start: 50292, Stop: 50062, Start Num: 10

Candidate Starts for Yecey3\_97:

(Start: 10 @50292 has 31 MA's), (12, 50256), (25, 50091),