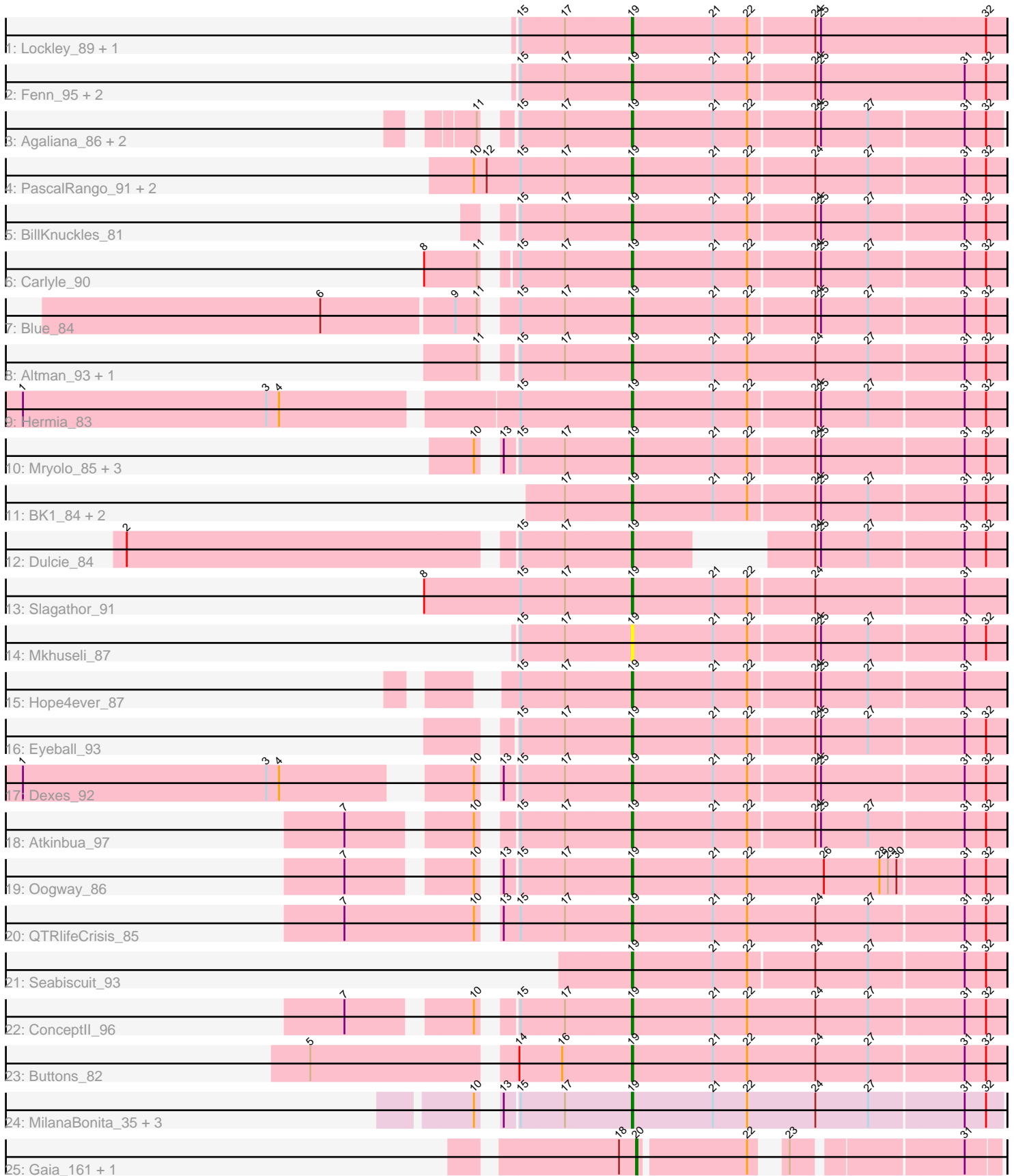


Pham 194139



Note: Tracks are now grouped by subcluster and scaled. Switching in subcluster is indicated by changes in track color. Track scale is now set by default to display the region 30 bp upstream of start 1 to 30 bp downstream of the last possible start. If this default region is judged to be packed too tightly with annotated starts, the track will be further scaled to only show that region of the ORF with annotated starts. This action will be indicated by adding "Zoomed" to the title. For starts, yellow indicates the location of called starts comprised solely of Glimmer/GeneMark auto-annotations, green indicates the location of called starts with at least 1 manual gene annotation.

Pham 194139 Report

This analysis was run 11/02/24 on database version 579.

Pham number 194139 has 42 members, 3 are drafts.

Phages represented in each track:

- Track 1 : Lockley_89, Pari_90
- Track 2 : Fenn_95, Naira_94, Squee_90
- Track 3 : Agaliana_86, Bircsak_89, Gompeii16_89
- Track 4 : PascalRango_91, Switzer_90, BeesKnees_94
- Track 5 : BillKnuckles_81
- Track 6 : Carlyle_90
- Track 7 : Blue_84
- Track 8 : Altman_93, Kanely_92
- Track 9 : Hermia_83
- Track 10 : Mryolo_85, Nerujay_94, Rhynn_86, Teodoridan_94
- Track 11 : BK1_84, A6_84, Magnar_90
- Track 12 : Dulcie_84
- Track 13 : Slagathor_91
- Track 14 : Mkhusei_87
- Track 15 : Hope4ever_87
- Track 16 : Eyeball_93
- Track 17 : Dexes_92
- Track 18 : Atkinbua_97
- Track 19 : Oogway_86
- Track 20 : QTRlifeCrisis_85
- Track 21 : Seabiscuit_93
- Track 22 : Conceptll_96
- Track 23 : Buttons_82
- Track 24 : MilanaBonita_35, LunaBlu_45, Batiatus_41, Akhila_35
- Track 25 : Gaia_161, Nebkiss_157

Summary of Final Annotations (See graph section above for start numbers):

The start number called the most often in the published annotations is 19, it was called in 37 of the 39 non-draft genes in the pham.

Genes that call this "Most Annotated" start:

- A6_84, Agaliana_86, Akhila_35, Altman_93, Atkinbua_97, BK1_84, Batiatus_41, BeesKnees_94, BillKnuckles_81, Bircsak_89, Blue_84, Buttons_82, Carlyle_90,

ConceptII_96, Dexes_92, Dulcie_84, Eyeball_93, Fenn_95, Gompeii16_89, Hermia_83, Hope4ever_87, Kanely_92, Lockley_89, LunaBlu_45, Magnar_90, MilanaBonita_35, Mkhusei_87, Mryolo_85, Naira_94, Nerujay_94, Oogway_86, Pari_90, PascalRango_91, QTRlifeCrisis_85, Rhynn_86, Seabiscuit_93, Slagathor_91, Squee_90, Switzer_90, Teodoridan_94,

Genes that have the "Most Annotated" start but do not call it:

-

Genes that do not have the "Most Annotated" start:

- Gaia_161, Nebkiss_157,

Summary by start number:

Start 19:

- Found in 40 of 42 (95.2%) of genes in pham
- Manual Annotations of this start: 37 of 39
- Called 100.0% of time when present
- Phage (with cluster) where this start called: A6_84 (A1), Agaliana_86 (A1), Akhila_35 (F1), Altman_93 (A1), Atkinbua_97 (A1), BK1_84 (A1), Batiatus_41 (F1), BeesKnees_94 (A1), BillKnuckles_81 (A1), Bircsak_89 (A1), Blue_84 (A1), Buttons_82 (A1), Carlyle_90 (A1), ConceptII_96 (A1), Dexes_92 (A1), Dulcie_84 (A1), Eyeball_93 (A1), Fenn_95 (A1), Gompeii16_89 (A1), Hermia_83 (A1), Hope4ever_87 (A1), Kanely_92 (A1), Lockley_89 (A1), LunaBlu_45 (F1), Magnar_90 (A1), MilanaBonita_35 (F1), Mkhusei_87 (A1), Mryolo_85 (A1), Naira_94 (A1), Nerujay_94 (A1), Oogway_86 (A1), Pari_90 (A1), PascalRango_91 (A1), QTRlifeCrisis_85 (A1), Rhynn_86 (A1), Seabiscuit_93 (A1), Slagathor_91 (A1), Squee_90 (A1), Switzer_90 (A1), Teodoridan_94 (A1),

Start 20:

- Found in 2 of 42 (4.8%) of genes in pham
- Manual Annotations of this start: 2 of 39
- Called 100.0% of time when present
- Phage (with cluster) where this start called: Gaia_161 (X), Nebkiss_157 (X),

Summary by clusters:

There are 3 clusters represented in this pham: A1, X, F1,

Info for manual annotations of cluster A1:

- Start number 19 was manually annotated 33 times for cluster A1.

Info for manual annotations of cluster F1:

- Start number 19 was manually annotated 4 times for cluster F1.

Info for manual annotations of cluster X:

- Start number 20 was manually annotated 2 times for cluster X.

Gene Information:

Gene: A6_84 Start: 48975, Stop: 48721, Start Num: 19

Candidate Starts for A6_84:

(17, 49020), (Start: 19 @48975 has 37 MA's), (21, 48918), (22, 48894), (24, 48849), (25, 48846), (27, 48813), (31, 48750), (32, 48735),

Gene: Agaliana_86 Start: 48958, Stop: 48707, Start Num: 19

Candidate Starts for Agaliana_86:

(11, 49045), (15, 49033), (17, 49003), (Start: 19 @48958 has 37 MA's), (21, 48901), (22, 48877), (24, 48832), (25, 48829), (27, 48796), (31, 48733), (32, 48718),

Gene: Akhila_35 Start: 27884, Stop: 27630, Start Num: 19

Candidate Starts for Akhila_35:

(10, 27974), (13, 27968), (15, 27959), (17, 27929), (Start: 19 @27884 has 37 MA's), (21, 27827), (22, 27803), (24, 27755), (27, 27719), (31, 27656), (32, 27641),

Gene: Altman_93 Start: 51784, Stop: 51527, Start Num: 19

Candidate Starts for Altman_93:

(11, 51871), (15, 51859), (17, 51829), (Start: 19 @51784 has 37 MA's), (21, 51727), (22, 51703), (24, 51655), (27, 51619), (31, 51556), (32, 51541),

Gene: Atkinbua_97 Start: 52217, Stop: 51963, Start Num: 19

Candidate Starts for Atkinbua_97:

(7, 52382), (10, 52307), (15, 52292), (17, 52262), (Start: 19 @52217 has 37 MA's), (21, 52160), (22, 52136), (24, 52091), (25, 52088), (27, 52055), (31, 51992), (32, 51977),

Gene: BK1_84 Start: 48975, Stop: 48721, Start Num: 19

Candidate Starts for BK1_84:

(17, 49020), (Start: 19 @48975 has 37 MA's), (21, 48918), (22, 48894), (24, 48849), (25, 48846), (27, 48813), (31, 48750), (32, 48735),

Gene: Batiatus_41 Start: 31862, Stop: 31608, Start Num: 19

Candidate Starts for Batiatus_41:

(10, 31952), (13, 31946), (15, 31937), (17, 31907), (Start: 19 @31862 has 37 MA's), (21, 31805), (22, 31781), (24, 31733), (27, 31697), (31, 31634), (32, 31619),

Gene: BeesKnees_94 Start: 50722, Stop: 50468, Start Num: 19

Candidate Starts for BeesKnees_94:

(10, 50830), (12, 50821), (15, 50797), (17, 50767), (Start: 19 @50722 has 37 MA's), (21, 50665), (22, 50641), (24, 50596), (27, 50560), (31, 50497), (32, 50482),

Gene: BillKnuckles_81 Start: 50042, Stop: 49788, Start Num: 19

Candidate Starts for BillKnuckles_81:

(15, 50117), (17, 50087), (Start: 19 @50042 has 37 MA's), (21, 49985), (22, 49961), (24, 49916), (25, 49913), (27, 49880), (31, 49817), (32, 49802),

Gene: Bircsak_89 Start: 52486, Stop: 52235, Start Num: 19

Candidate Starts for Bircsak_89:

(11, 52573), (15, 52561), (17, 52531), (Start: 19 @52486 has 37 MA's), (21, 52429), (22, 52405), (24, 52360), (25, 52357), (27, 52324), (31, 52261), (32, 52246),

Gene: Blue_84 Start: 50474, Stop: 50220, Start Num: 19

Candidate Starts for Blue_84:

(6, 50669), (9, 50579), (11, 50564), (15, 50549), (17, 50519), (Start: 19 @50474 has 37 MA's), (21, 50417), (22, 50393), (24, 50348), (25, 50345), (27, 50312), (31, 50249), (32, 50234),

Gene: Buttons_82 Start: 47652, Stop: 47395, Start Num: 19

Candidate Starts for Buttons_82:

(5, 47862), (14, 47730), (16, 47700), (Start: 19 @47652 has 37 MA's), (21, 47595), (22, 47571), (24, 47523), (27, 47487), (31, 47424), (32, 47409),

Gene: Carlyle_90 Start: 50491, Stop: 50237, Start Num: 19

Candidate Starts for Carlyle_90:

(8, 50614), (11, 50578), (15, 50566), (17, 50536), (Start: 19 @50491 has 37 MA's), (21, 50434), (22, 50410), (24, 50365), (25, 50362), (27, 50329), (31, 50266), (32, 50251),

Gene: Conceptll_96 Start: 52549, Stop: 52292, Start Num: 19

Candidate Starts for Conceptll_96:

(7, 52714), (10, 52639), (15, 52624), (17, 52594), (Start: 19 @52549 has 37 MA's), (21, 52492), (22, 52468), (24, 52420), (27, 52384), (31, 52321), (32, 52306),

Gene: Dexes_92 Start: 53613, Stop: 53359, Start Num: 19

Candidate Starts for Dexes_92:

(1, 53991), (3, 53820), (4, 53811), (10, 53703), (13, 53697), (15, 53688), (17, 53658), (Start: 19 @53613 has 37 MA's), (21, 53556), (22, 53532), (24, 53487), (25, 53484), (31, 53388), (32, 53373),

Gene: Dulcie_84 Start: 50542, Stop: 50339, Start Num: 19

Candidate Starts for Dulcie_84:

(2, 50875), (15, 50617), (17, 50587), (Start: 19 @50542 has 37 MA's), (24, 50467), (25, 50464), (27, 50431), (31, 50368), (32, 50353),

Gene: Eyeball_93 Start: 51506, Stop: 51252, Start Num: 19

Candidate Starts for Eyeball_93:

(15, 51581), (17, 51551), (Start: 19 @51506 has 37 MA's), (21, 51449), (22, 51425), (24, 51380), (25, 51377), (27, 51344), (31, 51281), (32, 51266),

Gene: Fenn_95 Start: 52290, Stop: 52033, Start Num: 19

Candidate Starts for Fenn_95:

(15, 52365), (17, 52335), (Start: 19 @52290 has 37 MA's), (21, 52233), (22, 52209), (24, 52164), (25, 52161), (31, 52062), (32, 52047),

Gene: Gaia_161 Start: 81793, Stop: 81578, Start Num: 20

Candidate Starts for Gaia_161:

(18, 81805), (Start: 20 @81793 has 2 MA's), (22, 81721), (23, 81709), (31, 81601),

Gene: Gompeii16_89 Start: 52487, Stop: 52236, Start Num: 19

Candidate Starts for Gompeii16_89:

(11, 52574), (15, 52562), (17, 52532), (Start: 19 @52487 has 37 MA's), (21, 52430), (22, 52406), (24, 52361), (25, 52358), (27, 52325), (31, 52262), (32, 52247),

Gene: Hermia_83 Start: 48916, Stop: 48662, Start Num: 19

Candidate Starts for Hermia_83:

(1, 49324), (3, 49153), (4, 49144), (15, 48991), (Start: 19 @48916 has 37 MA's), (21, 48859), (22, 48835), (24, 48790), (25, 48787), (27, 48754), (31, 48691), (32, 48676),

Gene: Hope4ever_87 Start: 49787, Stop: 49533, Start Num: 19

Candidate Starts for Hope4ever_87:

(15, 49862), (17, 49832), (Start: 19 @49787 has 37 MA's), (21, 49730), (22, 49706), (24, 49661), (25, 49658), (27, 49625), (31, 49562),

Gene: Kanely_92 Start: 51561, Stop: 51304, Start Num: 19

Candidate Starts for Kanely_92:

(11, 51648), (15, 51636), (17, 51606), (Start: 19 @51561 has 37 MA's), (21, 51504), (22, 51480), (24, 51432), (27, 51396), (31, 51333), (32, 51318),

Gene: Lockley_89 Start: 50614, Stop: 50357, Start Num: 19

Candidate Starts for Lockley_89:

(15, 50689), (17, 50659), (Start: 19 @50614 has 37 MA's), (21, 50557), (22, 50533), (24, 50488), (25, 50485), (32, 50371),

Gene: LunaBlu_45 Start: 32894, Stop: 32640, Start Num: 19

Candidate Starts for LunaBlu_45:

(10, 32984), (13, 32978), (15, 32969), (17, 32939), (Start: 19 @32894 has 37 MA's), (21, 32837), (22, 32813), (24, 32765), (27, 32729), (31, 32666), (32, 32651),

Gene: Magnar_90 Start: 50682, Stop: 50428, Start Num: 19

Candidate Starts for Magnar_90:

(17, 50727), (Start: 19 @50682 has 37 MA's), (21, 50625), (22, 50601), (24, 50556), (25, 50553), (27, 50520), (31, 50457), (32, 50442),

Gene: MilanaBonita_35 Start: 27884, Stop: 27630, Start Num: 19

Candidate Starts for MilanaBonita_35:

(10, 27974), (13, 27968), (15, 27959), (17, 27929), (Start: 19 @27884 has 37 MA's), (21, 27827), (22, 27803), (24, 27755), (27, 27719), (31, 27656), (32, 27641),

Gene: Mkhuseleli_87 Start: 48741, Stop: 48487, Start Num: 19

Candidate Starts for Mkhuseleli_87:

(15, 48816), (17, 48786), (Start: 19 @48741 has 37 MA's), (21, 48684), (22, 48660), (24, 48615), (25, 48612), (27, 48579), (31, 48516), (32, 48501),

Gene: Mryolo_85 Start: 49110, Stop: 49364, Start Num: 19

Candidate Starts for Mryolo_85:

(10, 49020), (13, 49026), (15, 49035), (17, 49065), (Start: 19 @49110 has 37 MA's), (21, 49167), (22, 49191), (24, 49236), (25, 49239), (31, 49335), (32, 49350),

Gene: Naira_94 Start: 52422, Stop: 52165, Start Num: 19

Candidate Starts for Naira_94:

(15, 52497), (17, 52467), (Start: 19 @52422 has 37 MA's), (21, 52365), (22, 52341), (24, 52296), (25, 52293), (31, 52194), (32, 52179),

Gene: Nebkiss_157 Start: 77284, Stop: 77069, Start Num: 20

Candidate Starts for Nebkiss_157:

(18, 77296), (Start: 20 @77284 has 2 MA's), (22, 77212), (23, 77200), (31, 77092),

Gene: Nerujay_94 Start: 52064, Stop: 52318, Start Num: 19

Candidate Starts for Nerujay_94:

(10, 51974), (13, 51980), (15, 51989), (17, 52019), (Start: 19 @52064 has 37 MA's), (21, 52121), (22, 52145), (24, 52190), (25, 52193), (31, 52289), (32, 52304),

Gene: Oogway_86 Start: 51017, Stop: 50757, Start Num: 19

Candidate Starts for Oogway_86:

(7, 51182), (10, 51107), (13, 51101), (15, 51092), (17, 51062), (Start: 19 @51017 has 37 MA's), (21, 50960), (22, 50936), (26, 50882), (28, 50843), (29, 50837), (30, 50831), (31, 50786), (32, 50771),

Gene: Pari_90 Start: 49619, Stop: 49362, Start Num: 19

Candidate Starts for Pari_90:

(15, 49694), (17, 49664), (Start: 19 @49619 has 37 MA's), (21, 49562), (22, 49538), (24, 49493), (25, 49490), (32, 49376),

Gene: PascalRango_91 Start: 51715, Stop: 51461, Start Num: 19

Candidate Starts for PascalRango_91:

(10, 51823), (12, 51814), (15, 51790), (17, 51760), (Start: 19 @51715 has 37 MA's), (21, 51658), (22, 51634), (24, 51589), (27, 51553), (31, 51490), (32, 51475),

Gene: QTRlifeCrisis_85 Start: 48887, Stop: 48630, Start Num: 19

Candidate Starts for QTRlifeCrisis_85:

(7, 49070), (10, 48980), (13, 48974), (15, 48962), (17, 48932), (Start: 19 @48887 has 37 MA's), (21, 48830), (22, 48806), (24, 48758), (27, 48722), (31, 48659), (32, 48644),

Gene: Rhynn_86 Start: 51064, Stop: 51318, Start Num: 19

Candidate Starts for Rhynn_86:

(10, 50974), (13, 50980), (15, 50989), (17, 51019), (Start: 19 @51064 has 37 MA's), (21, 51121), (22, 51145), (24, 51190), (25, 51193), (31, 51289), (32, 51304),

Gene: Seabiscuit_93 Start: 50753, Stop: 50499, Start Num: 19

Candidate Starts for Seabiscuit_93:

(Start: 19 @50753 has 37 MA's), (21, 50696), (22, 50672), (24, 50627), (27, 50591), (31, 50528), (32, 50513),

Gene: Slagathor_91 Start: 51233, Stop: 50979, Start Num: 19

Candidate Starts for Slagathor_91:

(8, 51374), (15, 51308), (17, 51278), (Start: 19 @51233 has 37 MA's), (21, 51176), (22, 51152), (24, 51107), (31, 51008),

Gene: Squee_90 Start: 51392, Stop: 51135, Start Num: 19

Candidate Starts for Squee_90:

(15, 51467), (17, 51437), (Start: 19 @51392 has 37 MA's), (21, 51335), (22, 51311), (24, 51266), (25, 51263), (31, 51164), (32, 51149),

Gene: Switzer_90 Start: 51546, Stop: 51292, Start Num: 19

Candidate Starts for Switzer_90:

(10, 51654), (12, 51645), (15, 51621), (17, 51591), (Start: 19 @51546 has 37 MA's), (21, 51489), (22, 51465), (24, 51420), (27, 51384), (31, 51321), (32, 51306),

Gene: Teodoridan_94 Start: 50836, Stop: 51090, Start Num: 19

Candidate Starts for Teodoridan_94:

(10, 50746), (13, 50752), (15, 50761), (17, 50791), (Start: 19 @50836 has 37 MA's), (21, 50893), (22, 50917), (24, 50962), (25, 50965), (31, 51061), (32, 51076),