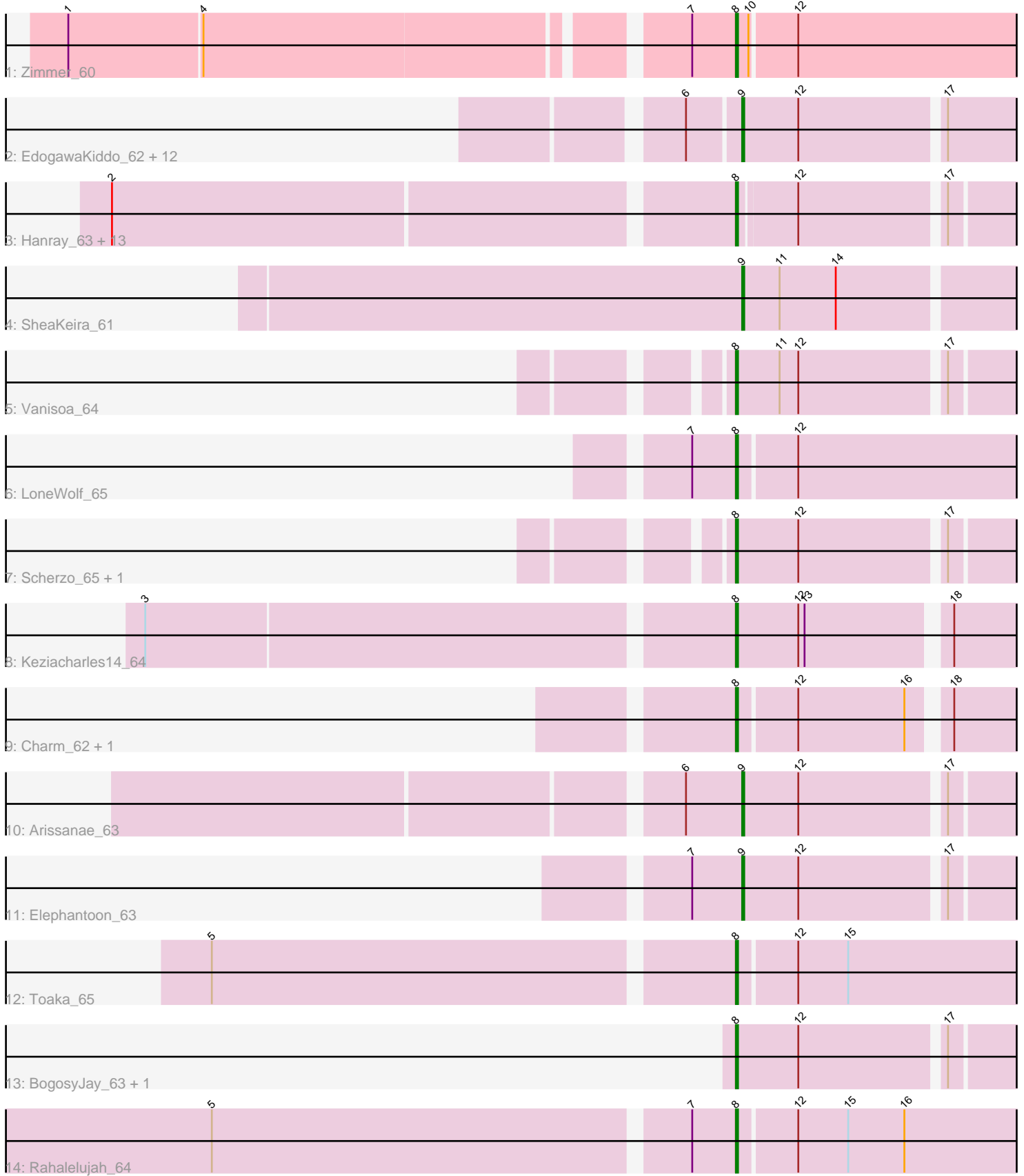


Pham 194141



Note: Tracks are now grouped by subcluster and scaled. Switching in subcluster is indicated by changes in track color. Track scale is now set by default to display the region 30 bp upstream of start 1 to 30 bp downstream of the last possible start. If this default region is judged to be packed too tightly with annotated starts, the track will be further scaled to only show that region of the ORF with annotated starts. This action will be indicated by adding "Zoomed" to the title. For starts, yellow indicates the location of called starts comprised solely of Glimmer/GeneMark auto-annotations, green indicates the location of called starts with at least 1 manual gene annotation.

Pham 194141 Report

This analysis was run 11/02/24 on database version 579.

Pham number 194141 has 42 members, 8 are drafts.

Phages represented in each track:

- Track 1 : Zimmer_60
- Track 2 : EdogawaKiddo_62, RyeScarlet_66, HortumSL17_65, Tubs_64, Aliter_65, Phonnegut_65, Phaeder_64, Sachima_60, Pioneer_65, PackMan_63, Catalina_66, Beemo_65, Myxus_64
- Track 3 : Hanray_63, Jiawan_62, Onglai_63, Holec_63, Qobbit_63, ExplosioNervosa_63, EmyBug_62, Eidsmoe_63, Conquerage_63, Alma_63, Lilleskat_61, Spouty_63, Fayely_63, Priya_63
- Track 4 : SheaKeira_61
- Track 5 : Vanisoa_64
- Track 6 : LoneWolf_65
- Track 7 : Scherzo_65, Ugenie5_61
- Track 8 : Keziacharles14_64
- Track 9 : Charm_62, DreamTeam1_62
- Track 10 : Arissanae_63
- Track 11 : Elephantoon_63
- Track 12 : Toaka_65
- Track 13 : BogosyJay_63, Maminiaiina_63
- Track 14 : Rahalelujah_64

Summary of Final Annotations (See graph section above for start numbers):

The start number called the most often in the published annotations is 8, it was called in 21 of the 34 non-draft genes in the pham.

Genes that call this "Most Annotated" start:

- Alma_63, BogosyJay_63, Charm_62, Conquerage_63, DreamTeam1_62, Eidsmoe_63, EmyBug_62, ExplosioNervosa_63, Fayely_63, Hanray_63, Holec_63, Jiawan_62, Keziacharles14_64, Lilleskat_61, LoneWolf_65, Maminiaiina_63, Onglai_63, Priya_63, Qobbit_63, Rahalelujah_64, Scherzo_65, Spouty_63, Toaka_65, Ugenie5_61, Vanisoa_64, Zimmer_60,

Genes that have the "Most Annotated" start but do not call it:

-

Genes that do not have the "Most Annotated" start:

- Aliter_65, Arissanae_63, Beemo_65, Catalina_66, EdogawaKiddo_62, Elephantoon_63, HortumSL17_65, Myxus_64, PackMan_63, Phaeder_64, Phonnegut_65, Pioneer_65, RyeScarlet_66, Sachima_60, SheaKeira_61, Tubs_64,

Summary by start number:

Start 8:

- Found in 26 of 42 (61.9%) of genes in pham
- Manual Annotations of this start: 21 of 34
- Called 100.0% of time when present
- Phage (with cluster) where this start called: Alma_63 (A9), BogosyJay_63 (A9), Charm_62 (A9), Conquerage_63 (A9), DreamTeam1_62 (A9), Eidsmoe_63 (A9), EmyBug_62 (A9), ExplosioNervosa_63 (A9), Fayely_63 (A9), Hanray_63 (A9), Holec_63 (A9), Jiawan_62 (A9), Keziacharles14_64 (A9), Lilleskat_61 (A9), LoneWolf_65 (A9), Maminiaina_63 (A9), Onglai_63 (A9), Priya_63 (A9), Qobbit_63 (A9), Rahalelujah_64 (A9), Scherzo_65 (A9), Spouty_63 (A9), Toaka_65 (A9), Ugenie5_61 (A9), Vanisoa_64 (A9), Zimmer_60 (A12),

Start 9:

- Found in 16 of 42 (38.1%) of genes in pham
- Manual Annotations of this start: 13 of 34
- Called 100.0% of time when present
- Phage (with cluster) where this start called: Aliter_65 (A9), Arissanae_63 (A9), Beemo_65 (A9), Catalina_66 (A9), EdogawaKiddo_62 (A9), Elephantoon_63 (A9), HortumSL17_65 (A9), Myxus_64 (A9), PackMan_63 (A9), Phaeder_64 (A9), Phonnegut_65 (A9), Pioneer_65 (A9), RyeScarlet_66 (A9), Sachima_60 (A9), SheaKeira_61 (A9), Tubs_64 (A9),

Summary by clusters:

There are 2 clusters represented in this pham: A9, A12,

Info for manual annotations of cluster A12:

- Start number 8 was manually annotated 1 time for cluster A12.

Info for manual annotations of cluster A9:

- Start number 8 was manually annotated 20 times for cluster A9.
- Start number 9 was manually annotated 13 times for cluster A9.

Gene Information:

Gene: Aliter_65 Start: 40065, Stop: 39910, Start Num: 9

Candidate Starts for Aliter_65:

(6, 40089), (Start: 9 @40065 has 13 MA's), (12, 40038), (17, 39972),

Gene: Alma_63 Start: 40097, Stop: 39942, Start Num: 8

Candidate Starts for Alma_63:

(2, 40385), (Start: 8 @40097 has 21 MA's), (12, 40070), (17, 40004),

Gene: Arissanae_63 Start: 40631, Stop: 40476, Start Num: 9

Candidate Starts for Arissanae_63:
(6, 40658), (Start: 9 @40631 has 13 MA's), (12, 40604), (17, 40538),

Gene: Beemo_65 Start: 40235, Stop: 40080, Start Num: 9
Candidate Starts for Beemo_65:
(6, 40259), (Start: 9 @40235 has 13 MA's), (12, 40208), (17, 40142),

Gene: BogosyJay_63 Start: 40035, Stop: 39877, Start Num: 8
Candidate Starts for BogosyJay_63:
(Start: 8 @40035 has 21 MA's), (12, 40005), (17, 39939),

Gene: Catalina_66 Start: 40138, Stop: 39983, Start Num: 9
Candidate Starts for Catalina_66:
(6, 40162), (Start: 9 @40138 has 13 MA's), (12, 40111), (17, 40045),

Gene: Charm_62 Start: 39763, Stop: 39614, Start Num: 8
Candidate Starts for Charm_62:
(Start: 8 @39763 has 21 MA's), (12, 39736), (16, 39685), (18, 39670),

Gene: Conquerage_63 Start: 39866, Stop: 39711, Start Num: 8
Candidate Starts for Conquerage_63:
(2, 40154), (Start: 8 @39866 has 21 MA's), (12, 39839), (17, 39773),

Gene: DreamTeam1_62 Start: 39595, Stop: 39446, Start Num: 8
Candidate Starts for DreamTeam1_62:
(Start: 8 @39595 has 21 MA's), (12, 39568), (16, 39517), (18, 39502),

Gene: EdogawaKiddo_62 Start: 40105, Stop: 39947, Start Num: 9
Candidate Starts for EdogawaKiddo_62:
(6, 40129), (Start: 9 @40105 has 13 MA's), (12, 40078), (17, 40012),

Gene: Eidsmoe_63 Start: 39858, Stop: 39703, Start Num: 8
Candidate Starts for Eidsmoe_63:
(2, 40146), (Start: 8 @39858 has 21 MA's), (12, 39831), (17, 39765),

Gene: Elephantoon_63 Start: 39445, Stop: 39290, Start Num: 9
Candidate Starts for Elephantoon_63:
(7, 39469), (Start: 9 @39445 has 13 MA's), (12, 39418), (17, 39352),

Gene: EmyBug_62 Start: 39860, Stop: 39705, Start Num: 8
Candidate Starts for EmyBug_62:
(2, 40148), (Start: 8 @39860 has 21 MA's), (12, 39833), (17, 39767),

Gene: ExplosioNervosa_63 Start: 39926, Stop: 39771, Start Num: 8
Candidate Starts for ExplosioNervosa_63:
(2, 40214), (Start: 8 @39926 has 21 MA's), (12, 39899), (17, 39833),

Gene: Fayely_63 Start: 39827, Stop: 39672, Start Num: 8
Candidate Starts for Fayely_63:
(2, 40115), (Start: 8 @39827 has 21 MA's), (12, 39800), (17, 39734),

Gene: Hanray_63 Start: 40190, Stop: 40035, Start Num: 8
Candidate Starts for Hanray_63:

(2, 40478), (Start: 8 @40190 has 21 MA's), (12, 40163), (17, 40097),

Gene: Holec_63 Start: 40206, Stop: 40051, Start Num: 8

Candidate Starts for Holec_63:

(2, 40494), (Start: 8 @40206 has 21 MA's), (12, 40179), (17, 40113),

Gene: HortumSL17_65 Start: 40137, Stop: 39982, Start Num: 9

Candidate Starts for HortumSL17_65:

(6, 40161), (Start: 9 @40137 has 13 MA's), (12, 40110), (17, 40044),

Gene: Jiawan_62 Start: 40222, Stop: 40067, Start Num: 8

Candidate Starts for Jiawan_62:

(2, 40510), (Start: 8 @40222 has 21 MA's), (12, 40195), (17, 40129),

Gene: Keziacharles14_64 Start: 41212, Stop: 41060, Start Num: 8

Candidate Starts for Keziacharles14_64:

(3, 41485), (Start: 8 @41212 has 21 MA's), (12, 41182), (13, 41179), (18, 41116),

Gene: Lilleskat_61 Start: 40058, Stop: 39900, Start Num: 8

Candidate Starts for Lilleskat_61:

(2, 40346), (Start: 8 @40058 has 21 MA's), (12, 40031), (17, 39965),

Gene: LoneWolf_65 Start: 40176, Stop: 40018, Start Num: 8

Candidate Starts for LoneWolf_65:

(7, 40197), (Start: 8 @40176 has 21 MA's), (12, 40149),

Gene: Maminiaina_63 Start: 40017, Stop: 39859, Start Num: 8

Candidate Starts for Maminiaina_63:

(Start: 8 @40017 has 21 MA's), (12, 39987), (17, 39921),

Gene: Myxus_64 Start: 40137, Stop: 39982, Start Num: 9

Candidate Starts for Myxus_64:

(6, 40161), (Start: 9 @40137 has 13 MA's), (12, 40110), (17, 40044),

Gene: Onglai_63 Start: 38478, Stop: 38323, Start Num: 8

Candidate Starts for Onglai_63:

(2, 38766), (Start: 8 @38478 has 21 MA's), (12, 38451), (17, 38385),

Gene: PackMan_63 Start: 40012, Stop: 39857, Start Num: 9

Candidate Starts for PackMan_63:

(6, 40036), (Start: 9 @40012 has 13 MA's), (12, 39985), (17, 39919),

Gene: Phaeder_64 Start: 40012, Stop: 39857, Start Num: 9

Candidate Starts for Phaeder_64:

(6, 40036), (Start: 9 @40012 has 13 MA's), (12, 39985), (17, 39919),

Gene: Phonnegut_65 Start: 40234, Stop: 40079, Start Num: 9

Candidate Starts for Phonnegut_65:

(6, 40258), (Start: 9 @40234 has 13 MA's), (12, 40207), (17, 40141),

Gene: Pioneer_65 Start: 40234, Stop: 40079, Start Num: 9

Candidate Starts for Pioneer_65:

(6, 40258), (Start: 9 @40234 has 13 MA's), (12, 40207), (17, 40141),

Gene: Priya_63 Start: 39861, Stop: 39706, Start Num: 8
Candidate Starts for Priya_63:
(2, 40149), (Start: 8 @39861 has 21 MA's), (12, 39834), (17, 39768),

Gene: Qobbit_63 Start: 39823, Stop: 39668, Start Num: 8
Candidate Starts for Qobbit_63:
(2, 40111), (Start: 8 @39823 has 21 MA's), (12, 39796), (17, 39730),

Gene: Rahalelujah_64 Start: 39776, Stop: 39618, Start Num: 8
Candidate Starts for Rahalelujah_64:
(5, 40019), (7, 39797), (Start: 8 @39776 has 21 MA's), (12, 39749), (15, 39725), (16, 39698),

Gene: RyeScarlet_66 Start: 40209, Stop: 40054, Start Num: 9
Candidate Starts for RyeScarlet_66:
(6, 40233), (Start: 9 @40209 has 13 MA's), (12, 40182), (17, 40116),

Gene: Sachima_60 Start: 40038, Stop: 39880, Start Num: 9
Candidate Starts for Sachima_60:
(6, 40062), (Start: 9 @40038 has 13 MA's), (12, 40011), (17, 39945),

Gene: Scherzo_65 Start: 40426, Stop: 40268, Start Num: 8
Candidate Starts for Scherzo_65:
(Start: 8 @40426 has 21 MA's), (12, 40396), (17, 40330),

Gene: SheaKeira_61 Start: 39614, Stop: 39462, Start Num: 9
Candidate Starts for SheaKeira_61:
(Start: 9 @39614 has 13 MA's), (11, 39596), (14, 39569),

Gene: Spouty_63 Start: 39860, Stop: 39705, Start Num: 8
Candidate Starts for Spouty_63:
(2, 40148), (Start: 8 @39860 has 21 MA's), (12, 39833), (17, 39767),

Gene: Toaka_65 Start: 40248, Stop: 40090, Start Num: 8
Candidate Starts for Toaka_65:
(5, 40491), (Start: 8 @40248 has 21 MA's), (12, 40221), (15, 40197),

Gene: Tubs_64 Start: 40012, Stop: 39857, Start Num: 9
Candidate Starts for Tubs_64:
(6, 40036), (Start: 9 @40012 has 13 MA's), (12, 39985), (17, 39919),

Gene: Ugenie5_61 Start: 40425, Stop: 40267, Start Num: 8
Candidate Starts for Ugenie5_61:
(Start: 8 @40425 has 21 MA's), (12, 40395), (17, 40329),

Gene: Vanisoa_64 Start: 41119, Stop: 40961, Start Num: 8
Candidate Starts for Vanisoa_64:
(Start: 8 @41119 has 21 MA's), (11, 41098), (12, 41089), (17, 41023),

Gene: Zimmer_60 Start: 40828, Stop: 40670, Start Num: 8
Candidate Starts for Zimmer_60:
(1, 41128), (4, 41065), (7, 40849), (Start: 8 @40828 has 21 MA's), (10, 40822), (12, 40801),