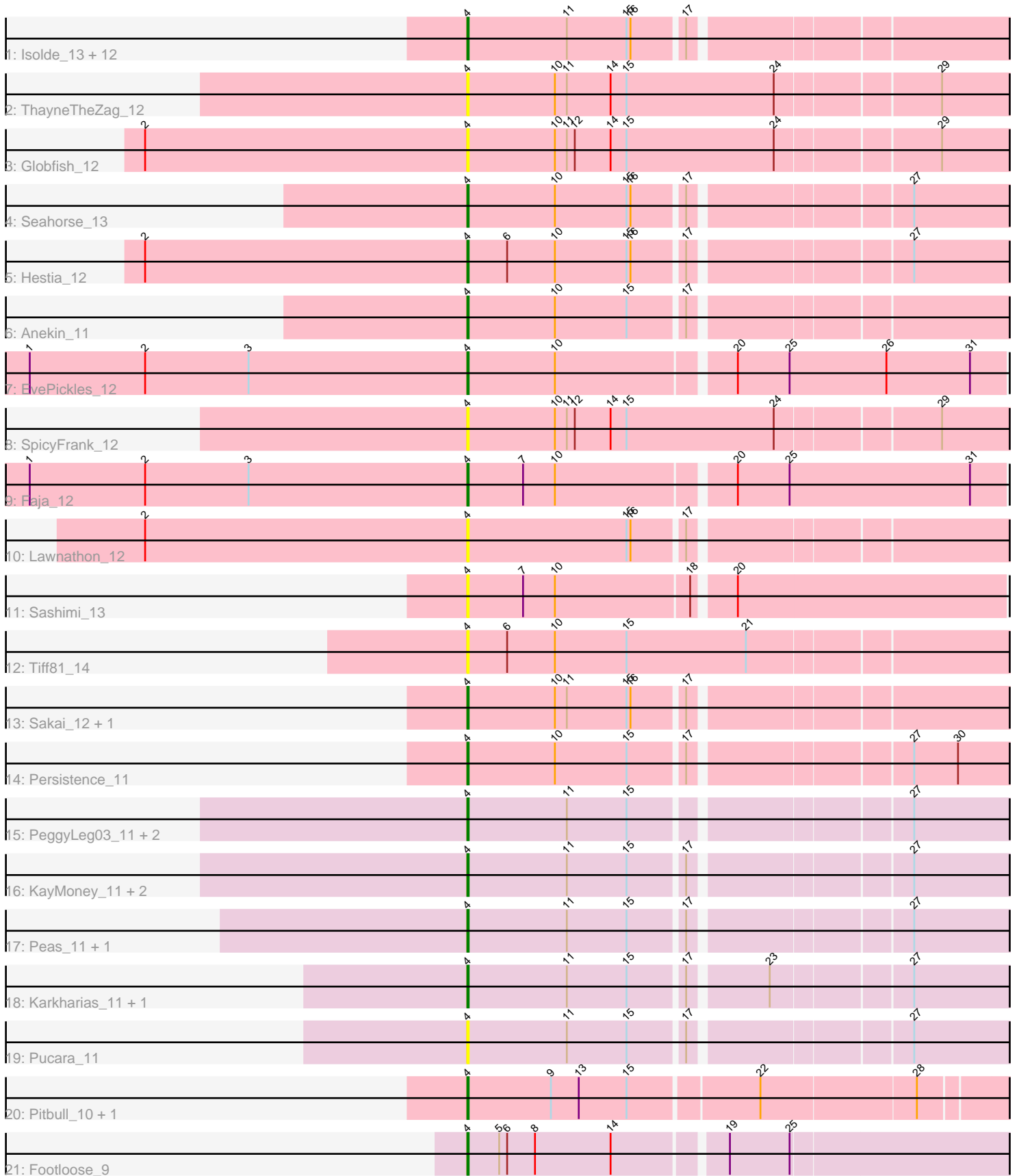


# Pham 194147



Note: Tracks are now grouped by subcluster and scaled. Switching in subcluster is indicated by changes in track color. Track scale is now set by default to display the region 30 bp upstream of start 1 to 30 bp downstream of the last possible start. If this default region is judged to be packed too tightly with annotated starts, the track will be further scaled to only show that region of the ORF with annotated starts. This action will be indicated by adding "Zoomed" to the title. For starts, yellow indicates the location of called starts comprised solely of Glimmer/GeneMark auto-annotations, green indicates the location of called starts with at least 1 manual gene annotation.

## Pham 194147 Report

This analysis was run 11/02/24 on database version 579.

Pham number 194147 has 41 members, 12 are drafts.

Phages represented in each track:

- Track 1 : Isolde\_13, RadFad\_12, Hillester\_12, BillyTP\_12, BenchScraper\_12, Raphaella\_12, Phrank15\_11, Richie\_12, CookieBear\_13, Aikyam\_12, MidnightRain\_12, Auxilium\_12, YoungHarleezy\_12
- Track 2 : ThayneTheZag\_12
- Track 3 : Globfish\_12
- Track 4 : Seahorse\_13
- Track 5 : Hestia\_12
- Track 6 : Anekin\_11
- Track 7 : EvePickles\_12
- Track 8 : SpicyFrank\_12
- Track 9 : Faja\_12
- Track 10 : Lawnathon\_12
- Track 11 : Sashimi\_13
- Track 12 : Tiff81\_14
- Track 13 : Sakai\_12, Gorpy\_12
- Track 14 : Persistence\_11
- Track 15 : PeggyLeg03\_11, Constance\_11, Judy\_11
- Track 16 : KayMoney\_11, GlobiWarming\_11, ChuckDuck\_11
- Track 17 : Peas\_11, Eileen\_11
- Track 18 : Karkharias\_11, Bridgette\_11
- Track 19 : Pucara\_11
- Track 20 : Pitbull\_10, Hum25\_10
- Track 21 : Footloose\_9

### ***Summary of Final Annotations (See graph section above for start numbers):***

The start number called the most often in the published annotations is 4, it was called in 29 of the 29 non-draft genes in the pham.

Genes that call this "Most Annotated" start:

- Aikyam\_12, Anekin\_11, Auxilium\_12, BenchScraper\_12, BillyTP\_12, Bridgette\_11, ChuckDuck\_11, Constance\_11, CookieBear\_13, Eileen\_11, EvePickles\_12, Faja\_12, Footloose\_9, Globfish\_12, GlobiWarming\_11, Gorpy\_12, Hestia\_12, Hillester\_12, Hum25\_10, Isolde\_13, Judy\_11, Karkharias\_11, KayMoney\_11, Lawnathon\_12,

MidnightRain\_12, Peas\_11, PeggyLeg03\_11, Persistence\_11, Phrank15\_11, Pitbull\_10, Pucara\_11, RadFad\_12, Raphaella\_12, Richie\_12, Sakai\_12, Sashimi\_13, Seahorse\_13, SpicyFrank\_12, ThayneTheZag\_12, Tiff81\_14, YoungHarleezy\_12,

Genes that have the "Most Annotated" start but do not call it:

- 

Genes that do not have the "Most Annotated" start:

- 

### Summary by start number:

Start 4:

- Found in 41 of 41 ( 100.0% ) of genes in pham
- Manual Annotations of this start: 29 of 29
- Called 100.0% of time when present
- Phage (with cluster) where this start called: Aikyam\_12 (AY), Anekin\_11 (AY), Auxilium\_12 (AY), BenchScraper\_12 (AY), BillyTP\_12 (AY), Bridgette\_11 (FA), ChuckDuck\_11 (FA), Constance\_11 (FA), CookieBear\_13 (AY), Eileen\_11 (FA), EvePickles\_12 (AY), Faja\_12 (AY), Footloose\_9 (singleton), Globfish\_12 (AY), GlobiWarming\_11 (FA), Gorpy\_12 (AY), Hestia\_12 (AY), Hillester\_12 (AY), Hum25\_10 (FQ), Isolde\_13 (AY), Judy\_11 (FA), Karkharias\_11 (FA), KayMoney\_11 (FA), Lawnathon\_12 (AY), MidnightRain\_12 (AY), Peas\_11 (FA), PeggyLeg03\_11 (FA), Persistence\_11 (AY), Phrank15\_11 (AY), Pitbull\_10 (FQ), Pucara\_11 (FA), RadFad\_12 (AY), Raphaella\_12 (AY), Richie\_12 (AY), Sakai\_12 (AY), Sashimi\_13 (AY), Seahorse\_13 (AY), SpicyFrank\_12 (AY), ThayneTheZag\_12 (AY), Tiff81\_14 (AY), YoungHarleezy\_12 (AY),

### Summary by clusters:

There are 4 clusters represented in this pham: AY, FA, singleton, FQ,

Info for manual annotations of cluster AY:

- Start number 4 was manually annotated 17 times for cluster AY.

Info for manual annotations of cluster FA:

- Start number 4 was manually annotated 9 times for cluster FA.

Info for manual annotations of cluster FQ:

- Start number 4 was manually annotated 2 times for cluster FQ.

### Gene Information:

Gene: Aikyam\_12 Start: 8044, Stop: 8427, Start Num: 4

Candidate Starts for Aikyam\_12:

(Start: 4 @8044 has 29 MA's), (11, 8119), (15, 8164), (16, 8167), (17, 8203),

Gene: Anekin\_11 Start: 8156, Stop: 8539, Start Num: 4

Candidate Starts for Anekin\_11:

(Start: 4 @8156 has 29 MA's), (10, 8222), (15, 8276), (17, 8315),

Gene: Auxilium\_12 Start: 8043, Stop: 8426, Start Num: 4  
Candidate Starts for Auxilium\_12:  
(Start: 4 @8043 has 29 MA's), (11, 8118), (15, 8163), (16, 8166), (17, 8202),

Gene: BenchScraper\_12 Start: 8058, Stop: 8441, Start Num: 4  
Candidate Starts for BenchScraper\_12:  
(Start: 4 @8058 has 29 MA's), (11, 8133), (15, 8178), (16, 8181), (17, 8217),

Gene: BillyTP\_12 Start: 8049, Stop: 8432, Start Num: 4  
Candidate Starts for BillyTP\_12:  
(Start: 4 @8049 has 29 MA's), (11, 8124), (15, 8169), (16, 8172), (17, 8208),

Gene: Bridgette\_11 Start: 8195, Stop: 8578, Start Num: 4  
Candidate Starts for Bridgette\_11:  
(Start: 4 @8195 has 29 MA's), (11, 8270), (15, 8315), (17, 8354), (23, 8408), (27, 8507),

Gene: ChuckDuck\_11 Start: 8151, Stop: 8534, Start Num: 4  
Candidate Starts for ChuckDuck\_11:  
(Start: 4 @8151 has 29 MA's), (11, 8226), (15, 8271), (17, 8310), (27, 8463),

Gene: Constance\_11 Start: 8197, Stop: 8580, Start Num: 4  
Candidate Starts for Constance\_11:  
(Start: 4 @8197 has 29 MA's), (11, 8272), (15, 8317), (27, 8509),

Gene: CookieBear\_13 Start: 8043, Stop: 8426, Start Num: 4  
Candidate Starts for CookieBear\_13:  
(Start: 4 @8043 has 29 MA's), (11, 8118), (15, 8163), (16, 8166), (17, 8202),

Gene: Eileen\_11 Start: 8160, Stop: 8543, Start Num: 4  
Candidate Starts for Eileen\_11:  
(Start: 4 @8160 has 29 MA's), (11, 8235), (15, 8280), (17, 8319), (27, 8472),

Gene: EvePickles\_12 Start: 8096, Stop: 8488, Start Num: 4  
Candidate Starts for EvePickles\_12:  
(1, 7766), (2, 7853), (3, 7931), (Start: 4 @8096 has 29 MA's), (10, 8162), (20, 8288), (25, 8327), (26, 8399), (31, 8462),

Gene: Faja\_12 Start: 8040, Stop: 8432, Start Num: 4  
Candidate Starts for Faja\_12:  
(1, 7710), (2, 7797), (3, 7875), (Start: 4 @8040 has 29 MA's), (7, 8082), (10, 8106), (20, 8232), (25, 8271), (31, 8406),

Gene: Footloose\_9 Start: 6630, Stop: 7031, Start Num: 4  
Candidate Starts for Footloose\_9:  
(Start: 4 @6630 has 29 MA's), (5, 6654), (6, 6660), (8, 6681), (14, 6738), (19, 6816), (25, 6861),

Gene: Globfish\_12 Start: 8091, Stop: 8489, Start Num: 4  
Candidate Starts for Globfish\_12:  
(2, 7848), (Start: 4 @8091 has 29 MA's), (10, 8157), (11, 8166), (12, 8172), (14, 8199), (15, 8211), (24, 8322), (29, 8439),

Gene: GlobiWarming\_11 Start: 8152, Stop: 8535, Start Num: 4

Candidate Starts for GlobiWarming\_11:  
(Start: 4 @8152 has 29 MA's), (11, 8227), (15, 8272), (17, 8311), (27, 8464),

Gene: Gorpy\_12 Start: 8052, Stop: 8435, Start Num: 4  
Candidate Starts for Gorpy\_12:  
(Start: 4 @8052 has 29 MA's), (10, 8118), (11, 8127), (15, 8172), (16, 8175), (17, 8211),

Gene: Hestia\_12 Start: 8156, Stop: 8539, Start Num: 4  
Candidate Starts for Hestia\_12:  
(2, 7913), (Start: 4 @8156 has 29 MA's), (6, 8186), (10, 8222), (15, 8276), (16, 8279), (17, 8315), (27, 8468),

Gene: Hillester\_12 Start: 8043, Stop: 8426, Start Num: 4  
Candidate Starts for Hillester\_12:  
(Start: 4 @8043 has 29 MA's), (11, 8118), (15, 8163), (16, 8166), (17, 8202),

Gene: Hum25\_10 Start: 6886, Stop: 7275, Start Num: 4  
Candidate Starts for Hum25\_10:  
(Start: 4 @6886 has 29 MA's), (9, 6949), (13, 6970), (15, 7006), (22, 7099), (28, 7213),

Gene: Isolde\_13 Start: 8114, Stop: 8497, Start Num: 4  
Candidate Starts for Isolde\_13:  
(Start: 4 @8114 has 29 MA's), (11, 8189), (15, 8234), (16, 8237), (17, 8273),

Gene: Judy\_11 Start: 8196, Stop: 8579, Start Num: 4  
Candidate Starts for Judy\_11:  
(Start: 4 @8196 has 29 MA's), (11, 8271), (15, 8316), (27, 8508),

Gene: Karkharias\_11 Start: 8156, Stop: 8539, Start Num: 4  
Candidate Starts for Karkharias\_11:  
(Start: 4 @8156 has 29 MA's), (11, 8231), (15, 8276), (17, 8315), (23, 8369), (27, 8468),

Gene: KayMoney\_11 Start: 8153, Stop: 8536, Start Num: 4  
Candidate Starts for KayMoney\_11:  
(Start: 4 @8153 has 29 MA's), (11, 8228), (15, 8273), (17, 8312), (27, 8465),

Gene: Lawnathon\_12 Start: 8194, Stop: 8577, Start Num: 4  
Candidate Starts for Lawnathon\_12:  
(2, 7951), (Start: 4 @8194 has 29 MA's), (15, 8314), (16, 8317), (17, 8353),

Gene: MidnightRain\_12 Start: 8043, Stop: 8426, Start Num: 4  
Candidate Starts for MidnightRain\_12:  
(Start: 4 @8043 has 29 MA's), (11, 8118), (15, 8163), (16, 8166), (17, 8202),

Gene: Peas\_11 Start: 8160, Stop: 8543, Start Num: 4  
Candidate Starts for Peas\_11:  
(Start: 4 @8160 has 29 MA's), (11, 8235), (15, 8280), (17, 8319), (27, 8472),

Gene: PeggyLeg03\_11 Start: 8197, Stop: 8580, Start Num: 4  
Candidate Starts for PeggyLeg03\_11:  
(Start: 4 @8197 has 29 MA's), (11, 8272), (15, 8317), (27, 8509),

Gene: Persistence\_11 Start: 8114, Stop: 8497, Start Num: 4

Candidate Starts for Persistence\_11:

(Start: 4 @8114 has 29 MA's), (10, 8180), (15, 8234), (17, 8273), (27, 8426), (30, 8459),

Gene: Phrank15\_11 Start: 8196, Stop: 8579, Start Num: 4

Candidate Starts for Phrank15\_11:

(Start: 4 @8196 has 29 MA's), (11, 8271), (15, 8316), (16, 8319), (17, 8355),

Gene: Pitbull\_10 Start: 6516, Stop: 6905, Start Num: 4

Candidate Starts for Pitbull\_10:

(Start: 4 @6516 has 29 MA's), (9, 6579), (13, 6600), (15, 6636), (22, 6729), (28, 6843),

Gene: Pucara\_11 Start: 8159, Stop: 8542, Start Num: 4

Candidate Starts for Pucara\_11:

(Start: 4 @8159 has 29 MA's), (11, 8234), (15, 8279), (17, 8318), (27, 8471),

Gene: RadFad\_12 Start: 8043, Stop: 8426, Start Num: 4

Candidate Starts for RadFad\_12:

(Start: 4 @8043 has 29 MA's), (11, 8118), (15, 8163), (16, 8166), (17, 8202),

Gene: Raphaella\_12 Start: 8043, Stop: 8426, Start Num: 4

Candidate Starts for Raphaella\_12:

(Start: 4 @8043 has 29 MA's), (11, 8118), (15, 8163), (16, 8166), (17, 8202),

Gene: Richie\_12 Start: 8058, Stop: 8441, Start Num: 4

Candidate Starts for Richie\_12:

(Start: 4 @8058 has 29 MA's), (11, 8133), (15, 8178), (16, 8181), (17, 8217),

Gene: Sakai\_12 Start: 8052, Stop: 8435, Start Num: 4

Candidate Starts for Sakai\_12:

(Start: 4 @8052 has 29 MA's), (10, 8118), (11, 8127), (15, 8172), (16, 8175), (17, 8211),

Gene: Sashimi\_13 Start: 8155, Stop: 8547, Start Num: 4

Candidate Starts for Sashimi\_13:

(Start: 4 @8155 has 29 MA's), (7, 8197), (10, 8221), (18, 8320), (20, 8347),

Gene: Seahorse\_13 Start: 8295, Stop: 8678, Start Num: 4

Candidate Starts for Seahorse\_13:

(Start: 4 @8295 has 29 MA's), (10, 8361), (15, 8415), (16, 8418), (17, 8454), (27, 8607),

Gene: SpicyFrank\_12 Start: 8106, Stop: 8504, Start Num: 4

Candidate Starts for SpicyFrank\_12:

(Start: 4 @8106 has 29 MA's), (10, 8172), (11, 8181), (12, 8187), (14, 8214), (15, 8226), (24, 8337), (29, 8454),

Gene: ThayneTheZag\_12 Start: 8083, Stop: 8481, Start Num: 4

Candidate Starts for ThayneTheZag\_12:

(Start: 4 @8083 has 29 MA's), (10, 8149), (11, 8158), (14, 8191), (15, 8203), (24, 8314), (29, 8431),

Gene: Tiff81\_14 Start: 8253, Stop: 8651, Start Num: 4

Candidate Starts for Tiff81\_14:

(Start: 4 @8253 has 29 MA's), (6, 8283), (10, 8319), (15, 8373), (21, 8463),

Gene: YoungHarleezy\_12 Start: 8056, Stop: 8439, Start Num: 4

Candidate Starts for YoungHarleezy\_12:  
(Start: 4 @8056 has 29 MA's), (11, 8131), (15, 8176), (16, 8179), (17, 8215),