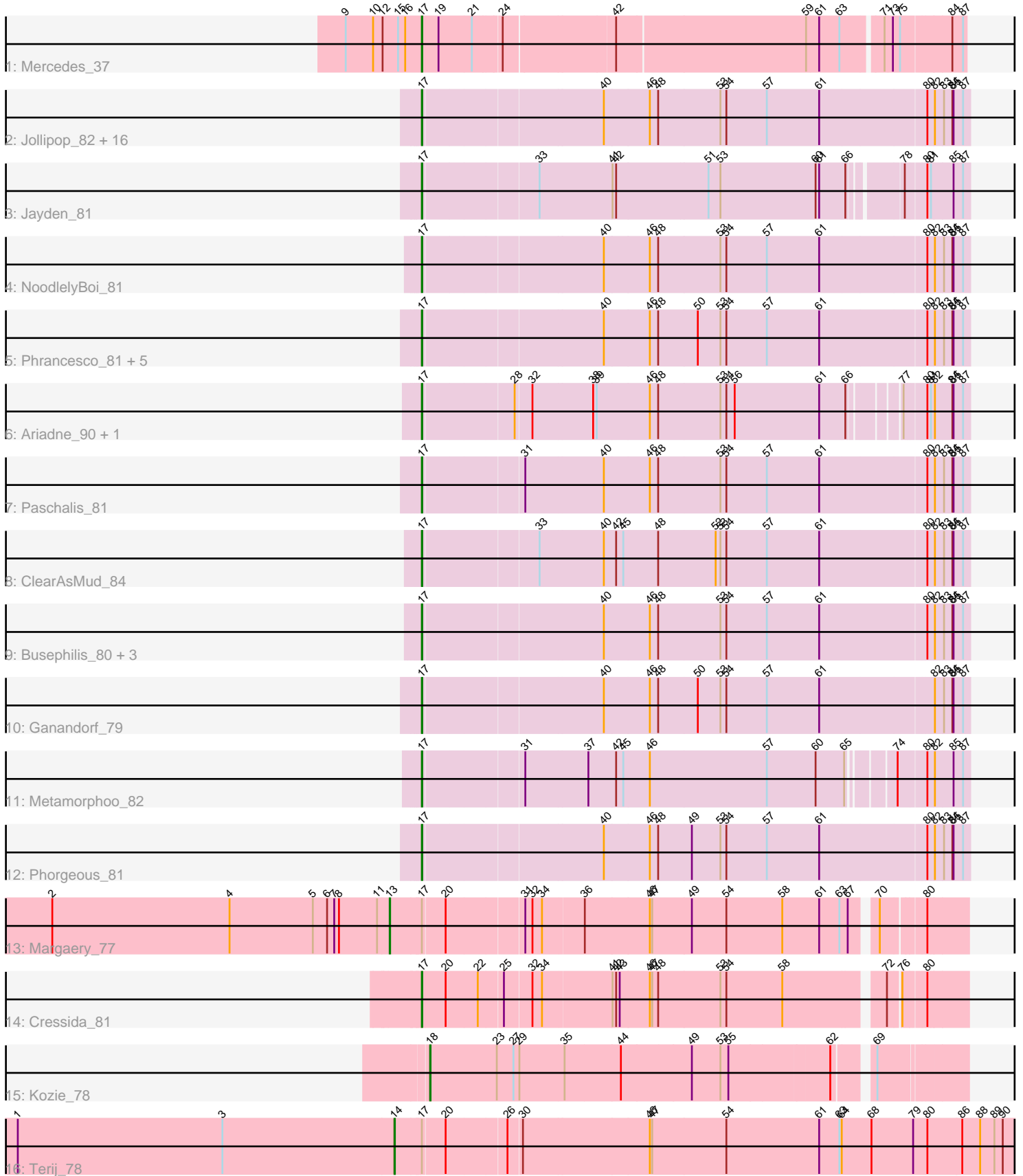


Pham 194149



Note: Tracks are now grouped by subcluster and scaled. Switching in subcluster is indicated by changes in track color. Track scale is now set by default to display the region 30 bp upstream of start 1 to 30 bp downstream of the last possible start. If this default region is judged to be packed too tightly with annotated starts, the track will be further scaled to only show that region of the ORF with annotated starts. This action will be indicated by adding "Zoomed" to the title. For starts, yellow indicates the location of called starts comprised solely of Glimmer/GeneMark auto-annotations, green indicates the location of called starts with at least 1 manual gene annotation.

Pham 194149 Report

This analysis was run 11/02/24 on database version 579.

Pham number 194149 has 41 members, 1 are drafts.

Phages represented in each track:

- Track 1 : Mercedes_37
- Track 2 : Jollipop_82, BrazzalePHS_80, LittleFortune_82, PierreOrion_80, Cranjis_82, Piperis_82, Savannah_80, Jefe_81, Crisis_82, Kowalski_80, Honeyfin_81, PiperSansNom_82, Scumberland_83, Hermeonysus_81, Ramiel05_80, Shotgun_80, Yeti_82
- Track 3 : Jayden_81
- Track 4 : NoodlelyBoi_81
- Track 5 : Phrancesco_81, KaiHaiDragon_82, CrazyRich_79, Quhwah_85, Pulchra_83, EarickHC_82
- Track 6 : Ariadne_90, Smarties_90
- Track 7 : Paschalis_81
- Track 8 : ClearAsMud_84
- Track 9 : Busephilis_80, Onika_80, Selwyn23_82, Antares_81
- Track 10 : Ganandorf_79
- Track 11 : Metamorphoo_82
- Track 12 : Phorgeous_81
- Track 13 : Margaery_77
- Track 14 : Cressida_81
- Track 15 : Kozie_78
- Track 16 : Terij_78

Summary of Final Annotations (See graph section above for start numbers):

The start number called the most often in the published annotations is 17, it was called in 37 of the 40 non-draft genes in the pham.

Genes that call this "Most Annotated" start:

- Antares_81, Ariadne_90, BrazzalePHS_80, Busephilis_80, ClearAsMud_84, Cranjis_82, CrazyRich_79, Cressida_81, Crisis_82, EarickHC_82, Ganandorf_79, Hermeonysus_81, Honeyfin_81, Jayden_81, Jefe_81, Jollipop_82, KaiHaiDragon_82, Kowalski_80, LittleFortune_82, Mercedes_37, Metamorphoo_82, NoodlelyBoi_81, Onika_80, Paschalis_81, Phorgeous_81, Phrancesco_81, PierreOrion_80, PiperSansNom_82, Piperis_82, Pulchra_83, Quhwah_85, Ramiel05_80, Savannah_80, Scumberland_83, Selwyn23_82, Shotgun_80, Smarties_90, Yeti_82,

Genes that have the "Most Annotated" start but do not call it:

- Margaery_77, Terij_78,

Genes that do not have the "Most Annotated" start:

- Kozie_78,

Summary by start number:

Start 13:

- Found in 1 of 41 (2.4%) of genes in pham
- Manual Annotations of this start: 1 of 40
- Called 100.0% of time when present
- Phage (with cluster) where this start called: Margaery_77 (EI),

Start 14:

- Found in 1 of 41 (2.4%) of genes in pham
- Manual Annotations of this start: 1 of 40
- Called 100.0% of time when present
- Phage (with cluster) where this start called: Terij_78 (EI),

Start 17:

- Found in 40 of 41 (97.6%) of genes in pham
- Manual Annotations of this start: 37 of 40
- Called 95.0% of time when present
- Phage (with cluster) where this start called: Antares_81 (EC), Ariadne_90 (EC), BrazzalePHS_80 (EC), Busephilis_80 (EC), ClearAsMud_84 (EC), Cranjjs_82 (EC), CrazyRich_79 (EC), Cressida_81 (EI), Crisis_82 (EC), EarickHC_82 (EC), Ganandorf_79 (EC), Hermeonysus_81 (EC), Honeyfin_81 (EC), Jayden_81 (EC), Jefe_81 (EC), Jollipop_82 (EC), KaiHaiDragon_82 (EC), Kowalski_80 (EC), LittleFortune_82 (EC), Mercedes_37 (EA), Metamorphoo_82 (EC), NoodlelyBoi_81 (EC), Onika_80 (EC), Paschalis_81 (EC), Phorgeous_81 (EC), Phrancesco_81 (EC), PierreOrion_80 (EC), PiperSansNom_82 (EC), Piperis_82 (EC), Pulchra_83 (EC), Quhwah_85 (EC), Ramiel05_80 (EC), Savannah_80 (EC), Scumberland_83 (EC), Selwyn23_82 (EC), Shotgun_80 (EC), Smarties_90 (EC), Yeti_82 (EC),

Start 18:

- Found in 1 of 41 (2.4%) of genes in pham
- Manual Annotations of this start: 1 of 40
- Called 100.0% of time when present
- Phage (with cluster) where this start called: Kozie_78 (EI),

Summary by clusters:

There are 3 clusters represented in this pham: EI, EA, EC,

Info for manual annotations of cluster EA:

- Start number 17 was manually annotated 1 time for cluster EA.

Info for manual annotations of cluster EC:

- Start number 17 was manually annotated 35 times for cluster EC.

Info for manual annotations of cluster EI:

- Start number 13 was manually annotated 1 time for cluster EI.
- Start number 14 was manually annotated 1 time for cluster EI.
- Start number 17 was manually annotated 1 time for cluster EI.
- Start number 18 was manually annotated 1 time for cluster EI.

Gene Information:

Gene: Antares_81 Start: 47473, Stop: 48798, Start Num: 17

Candidate Starts for Antares_81:

(Start: 17 @47473 has 37 MA's), (40, 47902), (46, 48016), (48, 48037), (53, 48193), (54, 48208), (57, 48310), (61, 48442), (80, 48694), (82, 48712), (83, 48733), (84, 48754), (85, 48757), (87, 48781),

Gene: Ariadne_90 Start: 48355, Stop: 49632, Start Num: 17

Candidate Starts for Ariadne_90:

(Start: 17 @48355 has 37 MA's), (28, 48568), (32, 48607), (38, 48757), (39, 48766), (46, 48898), (48, 48919), (53, 49075), (54, 49090), (56, 49111), (61, 49324), (66, 49387), (77, 49486), (80, 49528), (81, 49537), (82, 49546), (84, 49588), (85, 49591), (87, 49615),

Gene: BrazzalePHS_80 Start: 47273, Stop: 48598, Start Num: 17

Candidate Starts for BrazzalePHS_80:

(Start: 17 @47273 has 37 MA's), (40, 47702), (46, 47816), (48, 47837), (53, 47993), (54, 48008), (57, 48110), (61, 48242), (80, 48494), (82, 48512), (83, 48533), (84, 48554), (85, 48557), (87, 48581),

Gene: Busephilis_80 Start: 47180, Stop: 48505, Start Num: 17

Candidate Starts for Busephilis_80:

(Start: 17 @47180 has 37 MA's), (40, 47609), (46, 47723), (48, 47744), (53, 47900), (54, 47915), (57, 48017), (61, 48149), (80, 48401), (82, 48419), (83, 48440), (84, 48461), (85, 48464), (87, 48488),

Gene: ClearAsMud_84 Start: 47498, Stop: 48823, Start Num: 17

Candidate Starts for ClearAsMud_84:

(Start: 17 @47498 has 37 MA's), (33, 47768), (40, 47927), (42, 47957), (45, 47975), (48, 48062), (52, 48206), (53, 48218), (54, 48233), (57, 48335), (61, 48467), (80, 48719), (82, 48737), (83, 48758), (84, 48779), (85, 48782), (87, 48806),

Gene: Cranjis_82 Start: 47460, Stop: 48785, Start Num: 17

Candidate Starts for Cranjis_82:

(Start: 17 @47460 has 37 MA's), (40, 47889), (46, 48003), (48, 48024), (53, 48180), (54, 48195), (57, 48297), (61, 48429), (80, 48681), (82, 48699), (83, 48720), (84, 48741), (85, 48744), (87, 48768),

Gene: CrazyRich_79 Start: 46970, Stop: 48295, Start Num: 17

Candidate Starts for CrazyRich_79:

(Start: 17 @46970 has 37 MA's), (40, 47399), (46, 47513), (48, 47534), (50, 47633), (53, 47690), (54, 47705), (57, 47807), (61, 47939), (80, 48191), (82, 48209), (83, 48230), (84, 48251), (85, 48254), (87, 48278),

Gene: Cressida_81 Start: 48489, Stop: 49766, Start Num: 17

Candidate Starts for Cressida_81:

(Start: 17 @48489 has 37 MA's), (20, 48546), (22, 48624), (25, 48681), (32, 48747), (34, 48771), (41, 48939), (42, 48948), (43, 48957), (46, 49032), (47, 49038), (48, 49053), (53, 49209), (54, 49224), (58, 49365), (72, 49593), (76, 49620), (80, 49668),

Gene: Crisis_82 Start: 47416, Stop: 48741, Start Num: 17

Candidate Starts for Crisis_82:

(Start: 17 @47416 has 37 MA's), (40, 47845), (46, 47959), (48, 47980), (53, 48136), (54, 48151), (57, 48253), (61, 48385), (80, 48637), (82, 48655), (83, 48676), (84, 48697), (85, 48700), (87, 48724),

Gene: EarickHC_82 Start: 47338, Stop: 48663, Start Num: 17

Candidate Starts for EarickHC_82:

(Start: 17 @47338 has 37 MA's), (40, 47767), (46, 47881), (48, 47902), (50, 48001), (53, 48058), (54, 48073), (57, 48175), (61, 48307), (80, 48559), (82, 48577), (83, 48598), (84, 48619), (85, 48622), (87, 48646),

Gene: Ganandorf_79 Start: 46824, Stop: 48149, Start Num: 17

Candidate Starts for Ganandorf_79:

(Start: 17 @46824 has 37 MA's), (40, 47253), (46, 47367), (48, 47388), (50, 47487), (53, 47544), (54, 47559), (57, 47661), (61, 47793), (82, 48063), (83, 48084), (84, 48105), (85, 48108), (87, 48132),

Gene: Hermeonysus_81 Start: 47181, Stop: 48506, Start Num: 17

Candidate Starts for Hermeonysus_81:

(Start: 17 @47181 has 37 MA's), (40, 47610), (46, 47724), (48, 47745), (53, 47901), (54, 47916), (57, 48018), (61, 48150), (80, 48402), (82, 48420), (83, 48441), (84, 48462), (85, 48465), (87, 48489),

Gene: Honeyfin_81 Start: 47014, Stop: 48339, Start Num: 17

Candidate Starts for Honeyfin_81:

(Start: 17 @47014 has 37 MA's), (40, 47443), (46, 47557), (48, 47578), (53, 47734), (54, 47749), (57, 47851), (61, 47983), (80, 48235), (82, 48253), (83, 48274), (84, 48295), (85, 48298), (87, 48322),

Gene: Jayden_81 Start: 46981, Stop: 48267, Start Num: 17

Candidate Starts for Jayden_81:

(Start: 17 @46981 has 37 MA's), (33, 47251), (41, 47434), (42, 47443), (51, 47671), (53, 47701), (60, 47941), (61, 47950), (66, 48013), (78, 48121), (80, 48163), (81, 48172), (85, 48226), (87, 48250),

Gene: Jefe_81 Start: 47236, Stop: 48561, Start Num: 17

Candidate Starts for Jefe_81:

(Start: 17 @47236 has 37 MA's), (40, 47665), (46, 47779), (48, 47800), (53, 47956), (54, 47971), (57, 48073), (61, 48205), (80, 48457), (82, 48475), (83, 48496), (84, 48517), (85, 48520), (87, 48544),

Gene: Jollipop_82 Start: 47601, Stop: 48926, Start Num: 17

Candidate Starts for Jollipop_82:

(Start: 17 @47601 has 37 MA's), (40, 48030), (46, 48144), (48, 48165), (53, 48321), (54, 48336), (57, 48438), (61, 48570), (80, 48822), (82, 48840), (83, 48861), (84, 48882), (85, 48885), (87, 48909),

Gene: KaiHaiDragon_82 Start: 47338, Stop: 48663, Start Num: 17

Candidate Starts for KaiHaiDragon_82:

(Start: 17 @47338 has 37 MA's), (40, 47767), (46, 47881), (48, 47902), (50, 48001), (53, 48058), (54, 48073), (57, 48175), (61, 48307), (80, 48559), (82, 48577), (83, 48598), (84, 48619), (85, 48622), (87, 48646),

Gene: Kowalski_80 Start: 47268, Stop: 48593, Start Num: 17

Candidate Starts for Kowalski_80:

(Start: 17 @47268 has 37 MA's), (40, 47697), (46, 47811), (48, 47832), (53, 47988), (54, 48003), (57, 48105), (61, 48237), (80, 48489), (82, 48507), (83, 48528), (84, 48549), (85, 48552), (87, 48576),

Gene: Kozie_78 Start: 48031, Stop: 49293, Start Num: 18

Candidate Starts for Kozie_78:

(Start: 18 @48031 has 1 MA's), (23, 48199), (27, 48241), (29, 48256), (35, 48367), (44, 48505), (49, 48679), (53, 48751), (55, 48769), (62, 49009), (69, 49087),

Gene: LittleFortune_82 Start: 47257, Stop: 48582, Start Num: 17

Candidate Starts for LittleFortune_82:

(Start: 17 @47257 has 37 MA's), (40, 47686), (46, 47800), (48, 47821), (53, 47977), (54, 47992), (57, 48094), (61, 48226), (80, 48478), (82, 48496), (83, 48517), (84, 48538), (85, 48541), (87, 48565),

Gene: Margaery_77 Start: 47888, Stop: 49243, Start Num: 13

Candidate Starts for Margaery_77:

(2, 47039), (4, 47486), (5, 47696), (6, 47732), (7, 47750), (8, 47762), (11, 47858), (Start: 13 @47888 has 1 MA's), (Start: 17 @47963 has 37 MA's), (20, 48017), (31, 48200), (32, 48218), (34, 48242), (36, 48341), (46, 48503), (47, 48509), (49, 48608), (54, 48695), (58, 48836), (61, 48929), (63, 48980), (67, 48998), (70, 49049), (80, 49145),

Gene: Mercedes_37 Start: 29517, Stop: 28231, Start Num: 17

Candidate Starts for Mercedes_37:

(9, 29709), (10, 29640), (12, 29616), (15, 29577), (16, 29559), (Start: 17 @29517 has 37 MA's), (19, 29475), (21, 29394), (24, 29328), (42, 29061), (59, 28593), (61, 28563), (63, 28512), (71, 28419), (73, 28401), (75, 28383), (84, 28266), (87, 28239),

Gene: Metamorphoo_82 Start: 48066, Stop: 49349, Start Num: 17

Candidate Starts for Metamorphoo_82:

(Start: 17 @48066 has 37 MA's), (31, 48300), (37, 48456), (42, 48525), (45, 48543), (46, 48609), (57, 48903), (60, 49026), (65, 49095), (74, 49185), (80, 49245), (82, 49263), (85, 49308), (87, 49332),

Gene: NoodlelyBoi_81 Start: 47603, Stop: 48928, Start Num: 17

Candidate Starts for NoodlelyBoi_81:

(Start: 17 @47603 has 37 MA's), (40, 48032), (46, 48146), (48, 48167), (53, 48323), (54, 48338), (57, 48440), (61, 48572), (80, 48824), (82, 48842), (83, 48863), (84, 48884), (85, 48887), (87, 48911),

Gene: Onika_80 Start: 47239, Stop: 48564, Start Num: 17

Candidate Starts for Onika_80:

(Start: 17 @47239 has 37 MA's), (40, 47668), (46, 47782), (48, 47803), (53, 47959), (54, 47974), (57, 48076), (61, 48208), (80, 48460), (82, 48478), (83, 48499), (84, 48520), (85, 48523), (87, 48547),

Gene: Paschalis_81 Start: 47266, Stop: 48591, Start Num: 17

Candidate Starts for Paschalis_81:

(Start: 17 @47266 has 37 MA's), (31, 47500), (40, 47695), (46, 47809), (48, 47830), (53, 47986), (54, 48001), (57, 48103), (61, 48235), (80, 48487), (82, 48505), (83, 48526), (84, 48547), (85, 48550), (87, 48574),

Gene: Phorgeous_81 Start: 47055, Stop: 48380, Start Num: 17

Candidate Starts for Phorgeous_81:

(Start: 17 @47055 has 37 MA's), (40, 47484), (46, 47598), (48, 47619), (49, 47703), (53, 47775), (54, 47790), (57, 47892), (61, 48024), (80, 48276), (82, 48294), (83, 48315), (84, 48336), (85, 48339), (87, 48363),

Gene: Phrancesco_81 Start: 47366, Stop: 48691, Start Num: 17

Candidate Starts for Phrancesco_81:

(Start: 17 @47366 has 37 MA's), (40, 47795), (46, 47909), (48, 47930), (50, 48029), (53, 48086), (54, 48101), (57, 48203), (61, 48335), (80, 48587), (82, 48605), (83, 48626), (84, 48647), (85, 48650), (87,

48674),

Gene: PierreOrion_80 Start: 47075, Stop: 48400, Start Num: 17

Candidate Starts for PierreOrion_80:

(Start: 17 @47075 has 37 MA's), (40, 47504), (46, 47618), (48, 47639), (53, 47795), (54, 47810), (57, 47912), (61, 48044), (80, 48296), (82, 48314), (83, 48335), (84, 48356), (85, 48359), (87, 48383),

Gene: PiperSansNom_82 Start: 47575, Stop: 48900, Start Num: 17

Candidate Starts for PiperSansNom_82:

(Start: 17 @47575 has 37 MA's), (40, 48004), (46, 48118), (48, 48139), (53, 48295), (54, 48310), (57, 48412), (61, 48544), (80, 48796), (82, 48814), (83, 48835), (84, 48856), (85, 48859), (87, 48883),

Gene: Piperis_82 Start: 47174, Stop: 48499, Start Num: 17

Candidate Starts for Piperis_82:

(Start: 17 @47174 has 37 MA's), (40, 47603), (46, 47717), (48, 47738), (53, 47894), (54, 47909), (57, 48011), (61, 48143), (80, 48395), (82, 48413), (83, 48434), (84, 48455), (85, 48458), (87, 48482),

Gene: Pulchra_83 Start: 47741, Stop: 49066, Start Num: 17

Candidate Starts for Pulchra_83:

(Start: 17 @47741 has 37 MA's), (40, 48170), (46, 48284), (48, 48305), (50, 48404), (53, 48461), (54, 48476), (57, 48578), (61, 48710), (80, 48962), (82, 48980), (83, 49001), (84, 49022), (85, 49025), (87, 49049),

Gene: Quhwah_85 Start: 47895, Stop: 49220, Start Num: 17

Candidate Starts for Quhwah_85:

(Start: 17 @47895 has 37 MA's), (40, 48324), (46, 48438), (48, 48459), (50, 48558), (53, 48615), (54, 48630), (57, 48732), (61, 48864), (80, 49116), (82, 49134), (83, 49155), (84, 49176), (85, 49179), (87, 49203),

Gene: Ramiel05_80 Start: 47268, Stop: 48593, Start Num: 17

Candidate Starts for Ramiel05_80:

(Start: 17 @47268 has 37 MA's), (40, 47697), (46, 47811), (48, 47832), (53, 47988), (54, 48003), (57, 48105), (61, 48237), (80, 48489), (82, 48507), (83, 48528), (84, 48549), (85, 48552), (87, 48576),

Gene: Savannah_80 Start: 47460, Stop: 48785, Start Num: 17

Candidate Starts for Savannah_80:

(Start: 17 @47460 has 37 MA's), (40, 47889), (46, 48003), (48, 48024), (53, 48180), (54, 48195), (57, 48297), (61, 48429), (80, 48681), (82, 48699), (83, 48720), (84, 48741), (85, 48744), (87, 48768),

Gene: Scumberland_83 Start: 47514, Stop: 48839, Start Num: 17

Candidate Starts for Scumberland_83:

(Start: 17 @47514 has 37 MA's), (40, 47943), (46, 48057), (48, 48078), (53, 48234), (54, 48249), (57, 48351), (61, 48483), (80, 48735), (82, 48753), (83, 48774), (84, 48795), (85, 48798), (87, 48822),

Gene: Selwyn23_82 Start: 47399, Stop: 48724, Start Num: 17

Candidate Starts for Selwyn23_82:

(Start: 17 @47399 has 37 MA's), (40, 47828), (46, 47942), (48, 47963), (53, 48119), (54, 48134), (57, 48236), (61, 48368), (80, 48620), (82, 48638), (83, 48659), (84, 48680), (85, 48683), (87, 48707),

Gene: Shotgun_80 Start: 46770, Stop: 48095, Start Num: 17

Candidate Starts for Shotgun_80:

(Start: 17 @46770 has 37 MA's), (40, 47199), (46, 47313), (48, 47334), (53, 47490), (54, 47505), (57, 47607), (61, 47739), (80, 47991), (82, 48009), (83, 48030), (84, 48051), (85, 48054), (87, 48078),

Gene: Smarties_90 Start: 48352, Stop: 49629, Start Num: 17

Candidate Starts for Smarties_90:

(Start: 17 @48352 has 37 MA's), (28, 48565), (32, 48604), (38, 48754), (39, 48763), (46, 48895), (48, 48916), (53, 49072), (54, 49087), (56, 49108), (61, 49321), (66, 49384), (77, 49483), (80, 49525), (81, 49534), (82, 49543), (84, 49585), (85, 49588), (87, 49612),

Gene: Terij_78 Start: 47347, Stop: 48885, Start Num: 14

Candidate Starts for Terij_78:

(1, 46399), (3, 46915), (Start: 14 @47347 has 1 MA's), (Start: 17 @47410 has 37 MA's), (20, 47464), (26, 47608), (30, 47641), (46, 47956), (47, 47962), (54, 48148), (61, 48382), (63, 48433), (64, 48439), (68, 48514), (79, 48619), (80, 48655), (86, 48742), (88, 48787), (89, 48823), (90, 48844),

Gene: Yeti_82 Start: 46796, Stop: 48121, Start Num: 17

Candidate Starts for Yeti_82:

(Start: 17 @46796 has 37 MA's), (40, 47225), (46, 47339), (48, 47360), (53, 47516), (54, 47531), (57, 47633), (61, 47765), (80, 48017), (82, 48035), (83, 48056), (84, 48077), (85, 48080), (87, 48104),