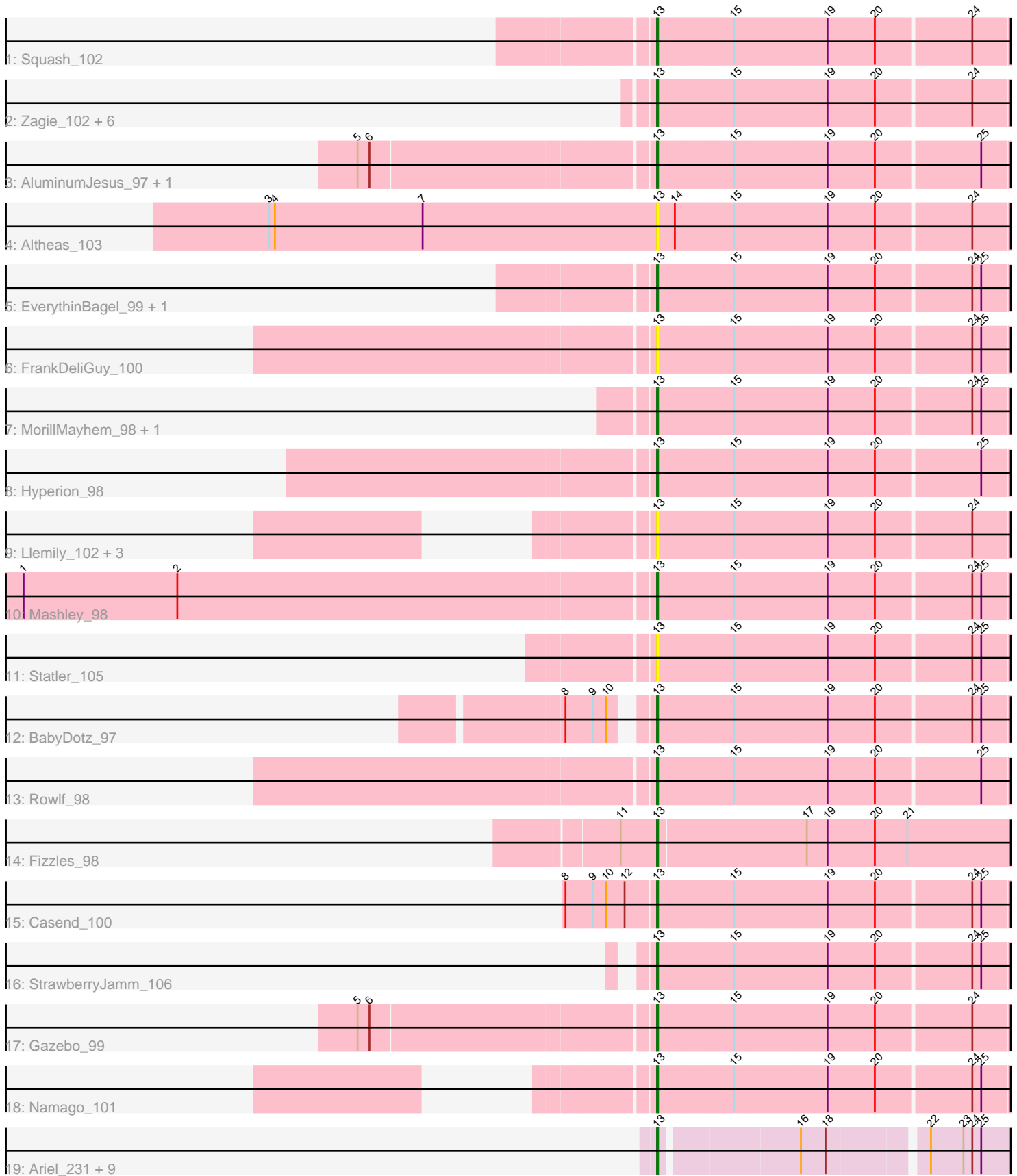


Pham 194152



Note: Tracks are now grouped by subcluster and scaled. Switching in subcluster is indicated by changes in track color. Track scale is now set by default to display the region 30 bp upstream of start 1 to 30 bp downstream of the last possible start. If this default region is judged to be packed too tightly with annotated starts, the track will be further scaled to only show that region of the ORF with annotated starts. This action will be indicated by adding "Zoomed" to the title. For starts, yellow indicates the location of called starts comprised solely of Glimmer/GeneMark auto-annotations, green indicates the location of called starts with at least 1 manual gene annotation.

Pham 194152 Report

This analysis was run 11/02/24 on database version 579.

Pham number 194152 has 40 members, 11 are drafts.

Phages represented in each track:

- Track 1 : Squash_102
- Track 2 : Zagie_102, Viceroy_99, Rudy_98, Kyva_104, Grassboy_105, Lonelysoil_98, Quammi_100
- Track 3 : AluminumJesus_97, Blab_97
- Track 4 : Altheas_103
- Track 5 : EverythinBagel_99, Judebell_99
- Track 6 : FrankDeliGuy_100
- Track 7 : MorillMayhem_98, Nike_98
- Track 8 : Hyperion_98
- Track 9 : Lemily_102, DonaldDuck_102, Sillytadpoles_103, Zhafia_106
- Track 10 : Mashley_98
- Track 11 : Statler_105
- Track 12 : BabyDotz_97
- Track 13 : Rowlf_98
- Track 14 : Fizzles_98
- Track 15 : Casend_100
- Track 16 : StrawberryJamm_106
- Track 17 : Gazebo_99
- Track 18 : Namago_101
- Track 19 : Ariel_231, Pound_214, Halley_227, Bombitas_209, Omega_226, Thibault_199, Courthouse_228, DmpstrDiver_224, Gonephishing_220, Superphikiman_223

Summary of Final Annotations (See graph section above for start numbers):

The start number called the most often in the published annotations is 13, it was called in 29 of the 29 non-draft genes in the pham.

Genes that call this "Most Annotated" start:

- Altheas_103, AluminumJesus_97, Ariel_231, BabyDotz_97, Blab_97, Bombitas_209, Casend_100, Courthouse_228, DmpstrDiver_224, DonaldDuck_102, EverythinBagel_99, Fizzles_98, FrankDeliGuy_100, Gazebo_99, Gonephishing_220, Grassboy_105, Halley_227, Hyperion_98, Judebell_99, Kyva_104, Lemily_102, Lonelysoil_98, Mashley_98, MorillMayhem_98, Namago_101, Nike_98, Omega_226,

Pound_214, Quammi_100, Rowlf_98, Rudy_98, Sillytadpoles_103, Squash_102, Statler_105, StrawberryJamm_106, Superphikiman_223, Thibault_199, Viceroy_99, Zagie_102, Zhafia_106,

Genes that have the "Most Annotated" start but do not call it:

-

Genes that do not have the "Most Annotated" start:

-

Summary by start number:

Start 13:

- Found in 40 of 40 (100.0%) of genes in pham
- Manual Annotations of this start: 29 of 29
- Called 100.0% of time when present
- Phage (with cluster) where this start called: Altheas_103 (EG), AluminumJesus_97 (EG), Ariel_231 (J), BabyDotz_97 (EG), Blab_97 (EG), Bombitas_209 (J), Casend_100 (EG), Courthouse_228 (J), DmpstrDiver_224 (J), DonaldDuck_102 (EG), EverythinBagel_99 (EG), Fizzles_98 (EG), FrankDeliGuy_100 (EG), Gazebo_99 (EG), Gonephishing_220 (J), Grassboy_105 (EG), Halley_227 (J), Hyperion_98 (EG), Judebell_99 (EG), Kyva_104 (EG), Llemily_102 (EG), Lonelysoil_98 (EG), Mashley_98 (EG), MorillMayhem_98 (EG), Namago_101 (EG), Nike_98 (EG), Omega_226 (J), Pound_214 (J), Quammi_100 (EG), Rowlf_98 (EG), Rudy_98 (EG), Sillytadpoles_103 (EG), Squash_102 (EG), Statler_105 (EG), StrawberryJamm_106 (EG), Superphikiman_223 (J), Thibault_199 (J), Viceroy_99 (EG), Zagie_102 (EG), Zhafia_106 (EG),

Summary by clusters:

There are 2 clusters represented in this pham: EG, J,

Info for manual annotations of cluster EG:

- Start number 13 was manually annotated 20 times for cluster EG.

Info for manual annotations of cluster J:

- Start number 13 was manually annotated 9 times for cluster J.

Gene Information:

Gene: Altheas_103 Start: 60624, Stop: 60274, Start Num: 13

Candidate Starts for Altheas_103:

(3, 61017), (4, 61011), (7, 60861), (Start: 13 @60624 has 29 MA's), (14, 60606), (15, 60549), (19, 60456), (20, 60408), (24, 60315),

Gene: AluminumJesus_97 Start: 59060, Stop: 58710, Start Num: 13

Candidate Starts for AluminumJesus_97:

(5, 59345), (6, 59333), (Start: 13 @59060 has 29 MA's), (15, 58985), (19, 58892), (20, 58844), (25, 58742),

Gene: Ariel_231 Start: 105061, Stop: 104738, Start Num: 13

Candidate Starts for Ariel_231:

(Start: 13 @105061 has 29 MA's), (16, 104929), (18, 104905), (22, 104815), (23, 104782), (24, 104773), (25, 104764),

Gene: BabyDotz_97 Start: 60530, Stop: 60180, Start Num: 13

Candidate Starts for BabyDotz_97:

(8, 60596), (9, 60569), (10, 60557), (Start: 13 @60530 has 29 MA's), (15, 60455), (19, 60362), (20, 60314), (24, 60221), (25, 60212),

Gene: Blab_97 Start: 59633, Stop: 59283, Start Num: 13

Candidate Starts for Blab_97:

(5, 59918), (6, 59906), (Start: 13 @59633 has 29 MA's), (15, 59558), (19, 59465), (20, 59417), (25, 59315),

Gene: Bombitas_209 Start: 104417, Stop: 104094, Start Num: 13

Candidate Starts for Bombitas_209:

(Start: 13 @104417 has 29 MA's), (16, 104285), (18, 104261), (22, 104171), (23, 104138), (24, 104129), (25, 104120),

Gene: Casend_100 Start: 59864, Stop: 59514, Start Num: 13

Candidate Starts for Casend_100:

(8, 59951), (9, 59924), (10, 59912), (12, 59894), (Start: 13 @59864 has 29 MA's), (15, 59789), (19, 59696), (20, 59648), (24, 59555), (25, 59546),

Gene: Courthouse_228 Start: 105921, Stop: 105598, Start Num: 13

Candidate Starts for Courthouse_228:

(Start: 13 @105921 has 29 MA's), (16, 105789), (18, 105765), (22, 105675), (23, 105642), (24, 105633), (25, 105624),

Gene: DmpstrDiver_224 Start: 106555, Stop: 106232, Start Num: 13

Candidate Starts for DmpstrDiver_224:

(Start: 13 @106555 has 29 MA's), (16, 106423), (18, 106399), (22, 106309), (23, 106276), (24, 106267), (25, 106258),

Gene: DonaldDuck_102 Start: 59448, Stop: 59098, Start Num: 13

Candidate Starts for DonaldDuck_102:

(Start: 13 @59448 has 29 MA's), (15, 59373), (19, 59280), (20, 59232), (24, 59139),

Gene: EverythinBagel_99 Start: 59029, Stop: 58679, Start Num: 13

Candidate Starts for EverythinBagel_99:

(Start: 13 @59029 has 29 MA's), (15, 58954), (19, 58861), (20, 58813), (24, 58720), (25, 58711),

Gene: Fizzles_98 Start: 59525, Stop: 59166, Start Num: 13

Candidate Starts for Fizzles_98:

(11, 59561), (Start: 13 @59525 has 29 MA's), (17, 59378), (19, 59357), (20, 59309), (21, 59276),

Gene: FrankDeliGuy_100 Start: 59788, Stop: 59438, Start Num: 13

Candidate Starts for FrankDeliGuy_100:

(Start: 13 @59788 has 29 MA's), (15, 59713), (19, 59620), (20, 59572), (24, 59479), (25, 59470),

Gene: Gazebo_99 Start: 59638, Stop: 59288, Start Num: 13

Candidate Starts for Gazebo_99:

(5, 59923), (6, 59911), (Start: 13 @59638 has 29 MA's), (15, 59563), (19, 59470), (20, 59422), (24, 59329),

Gene: Gonephishing_220 Start: 105314, Stop: 104991, Start Num: 13

Candidate Starts for Gonephishing_220:

(Start: 13 @105314 has 29 MA's), (16, 105182), (18, 105158), (22, 105068), (23, 105035), (24, 105026), (25, 105017),

Gene: Grassboy_105 Start: 60349, Stop: 59999, Start Num: 13

Candidate Starts for Grassboy_105:

(Start: 13 @60349 has 29 MA's), (15, 60274), (19, 60181), (20, 60133), (24, 60040),

Gene: Halley_227 Start: 106722, Stop: 106399, Start Num: 13

Candidate Starts for Halley_227:

(Start: 13 @106722 has 29 MA's), (16, 106590), (18, 106566), (22, 106476), (23, 106443), (24, 106434), (25, 106425),

Gene: Hyperion_98 Start: 59365, Stop: 59015, Start Num: 13

Candidate Starts for Hyperion_98:

(Start: 13 @59365 has 29 MA's), (15, 59290), (19, 59197), (20, 59149), (25, 59047),

Gene: Judebell_99 Start: 59264, Stop: 58914, Start Num: 13

Candidate Starts for Judebell_99:

(Start: 13 @59264 has 29 MA's), (15, 59189), (19, 59096), (20, 59048), (24, 58955), (25, 58946),

Gene: Kyva_104 Start: 60373, Stop: 60023, Start Num: 13

Candidate Starts for Kyva_104:

(Start: 13 @60373 has 29 MA's), (15, 60298), (19, 60205), (20, 60157), (24, 60064),

Gene: Llemily_102 Start: 59143, Stop: 58793, Start Num: 13

Candidate Starts for Llemily_102:

(Start: 13 @59143 has 29 MA's), (15, 59068), (19, 58975), (20, 58927), (24, 58834),

Gene: Lonelysoil_98 Start: 58904, Stop: 58554, Start Num: 13

Candidate Starts for Lonelysoil_98:

(Start: 13 @58904 has 29 MA's), (15, 58829), (19, 58736), (20, 58688), (24, 58595),

Gene: Mashley_98 Start: 59362, Stop: 59012, Start Num: 13

Candidate Starts for Mashley_98:

(1, 59989), (2, 59833), (Start: 13 @59362 has 29 MA's), (15, 59287), (19, 59194), (20, 59146), (24, 59053), (25, 59044),

Gene: MorillMayhem_98 Start: 59485, Stop: 59135, Start Num: 13

Candidate Starts for MorillMayhem_98:

(Start: 13 @59485 has 29 MA's), (15, 59410), (19, 59317), (20, 59269), (24, 59176), (25, 59167),

Gene: Namago_101 Start: 59431, Stop: 59081, Start Num: 13

Candidate Starts for Namago_101:

(Start: 13 @59431 has 29 MA's), (15, 59356), (19, 59263), (20, 59215), (24, 59122), (25, 59113),

Gene: Nike_98 Start: 59974, Stop: 59624, Start Num: 13

Candidate Starts for Nike_98:

(Start: 13 @59974 has 29 MA's), (15, 59899), (19, 59806), (20, 59758), (24, 59665), (25, 59656),

Gene: Omega_226 Start: 107434, Stop: 107111, Start Num: 13

Candidate Starts for Omega_226:

(Start: 13 @107434 has 29 MA's), (16, 107302), (18, 107278), (22, 107188), (23, 107155), (24, 107146), (25, 107137),

Gene: Pound_214 Start: 105325, Stop: 105011, Start Num: 13

Candidate Starts for Pound_214:

(Start: 13 @105325 has 29 MA's), (16, 105193), (18, 105169), (22, 105088), (23, 105055), (24, 105046), (25, 105037),

Gene: Quammi_100 Start: 59425, Stop: 59075, Start Num: 13

Candidate Starts for Quammi_100:

(Start: 13 @59425 has 29 MA's), (15, 59350), (19, 59257), (20, 59209), (24, 59116),

Gene: Rowlf_98 Start: 59714, Stop: 59364, Start Num: 13

Candidate Starts for Rowlf_98:

(Start: 13 @59714 has 29 MA's), (15, 59639), (19, 59546), (20, 59498), (25, 59396),

Gene: Rudy_98 Start: 59291, Stop: 58941, Start Num: 13

Candidate Starts for Rudy_98:

(Start: 13 @59291 has 29 MA's), (15, 59216), (19, 59123), (20, 59075), (24, 58982),

Gene: Sillytadpoles_103 Start: 59131, Stop: 58781, Start Num: 13

Candidate Starts for Sillytadpoles_103:

(Start: 13 @59131 has 29 MA's), (15, 59056), (19, 58963), (20, 58915), (24, 58822),

Gene: Squash_102 Start: 59899, Stop: 59549, Start Num: 13

Candidate Starts for Squash_102:

(Start: 13 @59899 has 29 MA's), (15, 59824), (19, 59731), (20, 59683), (24, 59590),

Gene: Statler_105 Start: 59985, Stop: 59635, Start Num: 13

Candidate Starts for Statler_105:

(Start: 13 @59985 has 29 MA's), (15, 59910), (19, 59817), (20, 59769), (24, 59676), (25, 59667),

Gene: StrawberryJamm_106 Start: 59386, Stop: 59039, Start Num: 13

Candidate Starts for StrawberryJamm_106:

(Start: 13 @59386 has 29 MA's), (15, 59311), (19, 59218), (20, 59170), (24, 59077), (25, 59068),

Gene: Superphikiman_223 Start: 104882, Stop: 104559, Start Num: 13

Candidate Starts for Superphikiman_223:

(Start: 13 @104882 has 29 MA's), (16, 104750), (18, 104726), (22, 104636), (23, 104603), (24, 104594), (25, 104585),

Gene: Thibault_199 Start: 101860, Stop: 101537, Start Num: 13

Candidate Starts for Thibault_199:

(Start: 13 @101860 has 29 MA's), (16, 101728), (18, 101704), (22, 101614), (23, 101581), (24, 101572), (25, 101563),

Gene: Viceroy_99 Start: 59246, Stop: 58896, Start Num: 13

Candidate Starts for Viceroy_99:

(Start: 13 @59246 has 29 MA's), (15, 59171), (19, 59078), (20, 59030), (24, 58937),

Gene: Zagie_102 Start: 59891, Stop: 59541, Start Num: 13

Candidate Starts for Zagie_102:

(Start: 13 @59891 has 29 MA's), (15, 59816), (19, 59723), (20, 59675), (24, 59582),

Gene: Zhafia_106 Start: 59925, Stop: 59575, Start Num: 13

Candidate Starts for Zhafia_106:

(Start: 13 @59925 has 29 MA's), (15, 59850), (19, 59757), (20, 59709), (24, 59616),