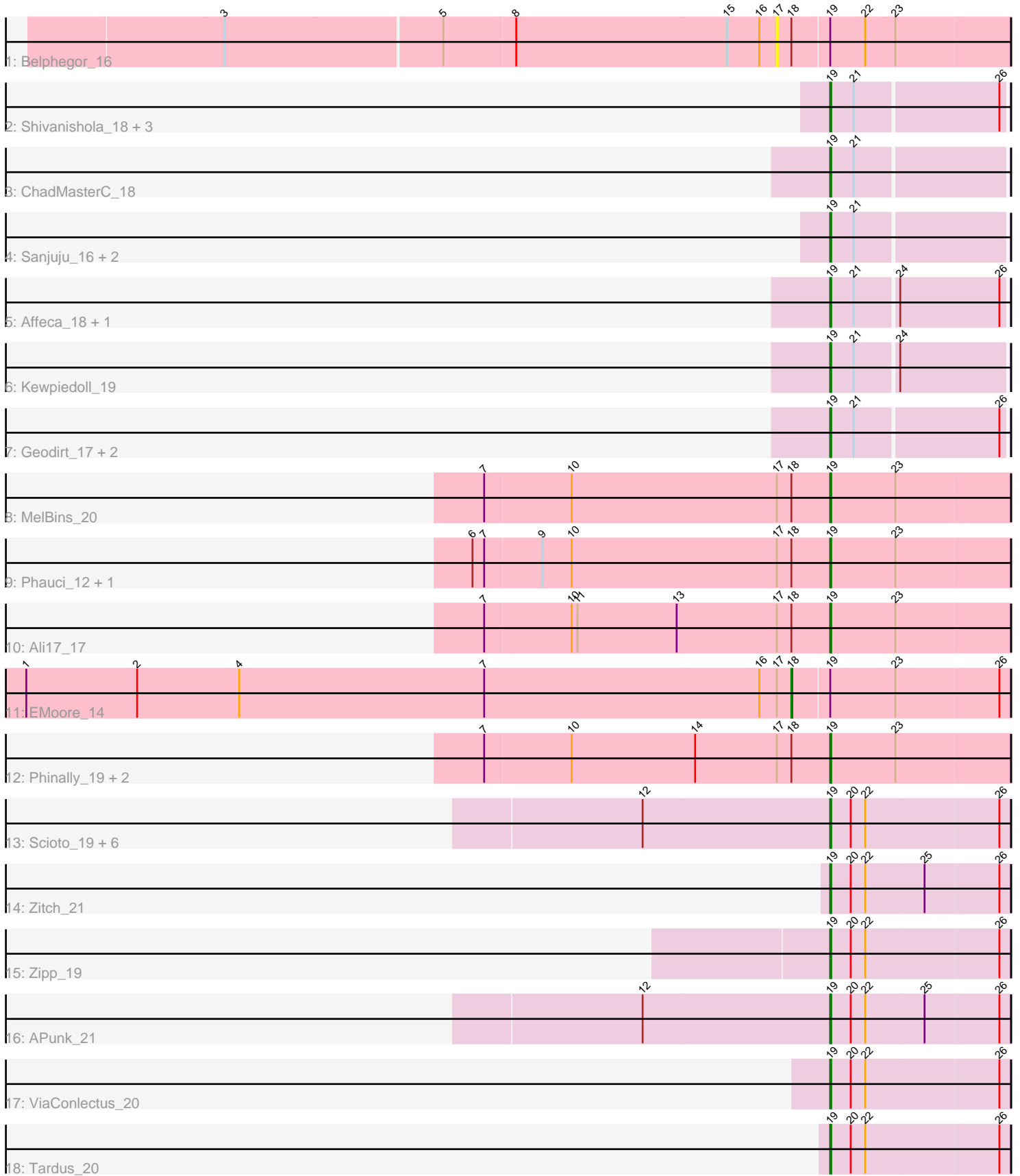


# Pham 194201



Note: Tracks are now grouped by subcluster and scaled. Switching in subcluster is indicated by changes in track color. Track scale is now set by default to display the region 30 bp upstream of start 1 to 30 bp downstream of the last possible start. If this default region is judged to be packed too tightly with annotated starts, the track will be further scaled to only show that region of the ORF with annotated starts. This action will be indicated by adding "Zoomed" to the title. For starts, yellow indicates the location of called starts comprised solely of Glimmer/GeneMark auto-annotations, green indicates the location of called starts with at least 1 manual gene annotation.

## Pham 194201 Report

This analysis was run 11/02/24 on database version 579.

Pham number 194201 has 35 members, 4 are drafts.

Phages represented in each track:

- Track 1 : Belphegor\_16
- Track 2 : Shivanishola\_18, Barsten\_18, Fosterous\_15, Bibwit\_18
- Track 3 : ChadMasterC\_18
- Track 4 : Sanjuju\_16, Stultus\_18, Jabberwocky\_16
- Track 5 : Affeca\_18, Angelicage\_18
- Track 6 : Kewpiedoll\_19
- Track 7 : Geodirt\_17, Fitzgerald\_16, Rofo\_17
- Track 8 : MelBins\_20
- Track 9 : Phauci\_12, Hans\_21
- Track 10 : Ali17\_17
- Track 11 : EMoore\_14
- Track 12 : Phinally\_19, Inspectinfecti\_20, Leonard\_19
- Track 13 : Scioto\_19, Sampson\_19, DoctorFroggo\_19, Abblin\_19, Natkenzie\_19, Delrey21\_19, Verity\_19
- Track 14 : Zitch\_21
- Track 15 : Zipp\_19
- Track 16 : APunk\_21
- Track 17 : ViaConlectus\_20
- Track 18 : Tardus\_20

### ***Summary of Final Annotations (See graph section above for start numbers):***

The start number called the most often in the published annotations is 19, it was called in 30 of the 31 non-draft genes in the pham.

Genes that call this "Most Annotated" start:

- APunk\_21, Abblin\_19, Affeca\_18, Ali17\_17, Angelicage\_18, Barsten\_18, Bibwit\_18, ChadMasterC\_18, Delrey21\_19, DoctorFroggo\_19, Fitzgerald\_16, Fosterous\_15, Geodirt\_17, Hans\_21, Inspectinfecti\_20, Jabberwocky\_16, Kewpiedoll\_19, Leonard\_19, MelBins\_20, Natkenzie\_19, Phauci\_12, Phinally\_19, Rofo\_17, Sampson\_19, Sanjuju\_16, Scioto\_19, Shivanishola\_18, Stultus\_18, Tardus\_20, Verity\_19, ViaConlectus\_20, Zipp\_19, Zitch\_21,

Genes that have the "Most Annotated" start but do not call it:

- Belphegor\_16, EMoore\_14,

Genes that do not have the "Most Annotated" start:

- 

### Summary by start number:

Start 17:

- Found in 9 of 35 ( 25.7% ) of genes in pham
- No Manual Annotations of this start.
- Called 11.1% of time when present
- Phage (with cluster) where this start called: Belphegor\_16 (DE),

Start 18:

- Found in 9 of 35 ( 25.7% ) of genes in pham
- Manual Annotations of this start: 1 of 31
- Called 11.1% of time when present
- Phage (with cluster) where this start called: EMoore\_14 (DE2),

Start 19:

- Found in 35 of 35 ( 100.0% ) of genes in pham
- Manual Annotations of this start: 30 of 31
- Called 94.3% of time when present
- Phage (with cluster) where this start called: APunk\_21 (DE4), Abblin\_19 (DE4), Affeca\_18 (DE1), Ali17\_17 (DE2), Angelicage\_18 (DE1), Barsten\_18 (DE1), Bibwit\_18 (DE1), ChadMasterC\_18 (DE1), Delrey21\_19 (DE4), DoctorFroggo\_19 (DE4), Fitzgerald\_16 (DE1), Fosterous\_15 (DE1), Geodirt\_17 (DE1), Hans\_21 (DE2), Inspectinfecti\_20 (DE2), Jabberwocky\_16 (DE1), Kewpiedoll\_19 (DE1), Leonard\_19 (DE2), MelBins\_20 (DE2), Natkenzie\_19 (DE4), Phauci\_12 (DE2), Phinally\_19 (DE2), Rofo\_17 (DE1), Sampson\_19 (DE4), Sanjuju\_16 (DE1), Scioto\_19 (DE4), Shivanishola\_18 (DE1), Stultus\_18 (DE1), Tardus\_20 (DE4), Verity\_19 (DE4), ViaConlectus\_20 (DE4), Zipp\_19 (DE4), Zitch\_21 (DE4),

### Summary by clusters:

There are 4 clusters represented in this pham: DE1, DE2, DE, DE4,

Info for manual annotations of cluster DE1:

- Start number 19 was manually annotated 14 times for cluster DE1.

Info for manual annotations of cluster DE2:

- Start number 18 was manually annotated 1 time for cluster DE2.
- Start number 19 was manually annotated 7 times for cluster DE2.

Info for manual annotations of cluster DE4:

- Start number 19 was manually annotated 9 times for cluster DE4.

### Gene Information:

Gene: APunk\_21 Start: 15881, Stop: 16063, Start Num: 19

Candidate Starts for APunk\_21:

(12, 15689), (Start: 19 @15881 has 30 MA's), (20, 15902), (22, 15917), (25, 15977), (26, 16052),

Gene: Abblin\_19 Start: 15094, Stop: 15276, Start Num: 19

Candidate Starts for Abblin\_19:

(12, 14902), (Start: 19 @15094 has 30 MA's), (20, 15115), (22, 15130), (26, 15265),

Gene: Affeca\_18 Start: 14929, Stop: 15102, Start Num: 19

Candidate Starts for Affeca\_18:

(Start: 19 @14929 has 30 MA's), (21, 14953), (24, 14995), (26, 15097),

Gene: Ali17\_17 Start: 14222, Stop: 14404, Start Num: 19

Candidate Starts for Ali17\_17:

(7, 13871), (10, 13958), (11, 13964), (13, 14066), (17, 14168), (Start: 18 @14183 has 1 MA's), (Start: 19 @14222 has 30 MA's), (23, 14288),

Gene: Angelicage\_18 Start: 15352, Stop: 15525, Start Num: 19

Candidate Starts for Angelicage\_18:

(Start: 19 @15352 has 30 MA's), (21, 15376), (24, 15418), (26, 15520),

Gene: Barsten\_18 Start: 14428, Stop: 14601, Start Num: 19

Candidate Starts for Barsten\_18:

(Start: 19 @14428 has 30 MA's), (21, 14452), (26, 14596),

Gene: Belphegor\_16 Start: 13276, Stop: 13509, Start Num: 17

Candidate Starts for Belphegor\_16:

(3, 12718), (5, 12937), (8, 13009), (15, 13225), (16, 13258), (17, 13276), (Start: 18 @13291 has 1 MA's), (Start: 19 @13327 has 30 MA's), (22, 13363), (23, 13393),

Gene: Bibwit\_18 Start: 14672, Stop: 14845, Start Num: 19

Candidate Starts for Bibwit\_18:

(Start: 19 @14672 has 30 MA's), (21, 14696), (26, 14840),

Gene: ChadMasterC\_18 Start: 14829, Stop: 15002, Start Num: 19

Candidate Starts for ChadMasterC\_18:

(Start: 19 @14829 has 30 MA's), (21, 14853),

Gene: Delrey21\_19 Start: 14557, Stop: 14739, Start Num: 19

Candidate Starts for Delrey21\_19:

(12, 14365), (Start: 19 @14557 has 30 MA's), (20, 14578), (22, 14593), (26, 14728),

Gene: DoctorFroggo\_19 Start: 14557, Stop: 14739, Start Num: 19

Candidate Starts for DoctorFroggo\_19:

(12, 14365), (Start: 19 @14557 has 30 MA's), (20, 14578), (22, 14593), (26, 14728),

Gene: EMoore\_14 Start: 12548, Stop: 12766, Start Num: 18

Candidate Starts for EMoore\_14:

(1, 11762), (2, 11876), (4, 11981), (7, 12233), (16, 12515), (17, 12533), (Start: 18 @12548 has 1 MA's), (Start: 19 @12584 has 30 MA's), (23, 12650), (26, 12755),

Gene: Fitzgerald\_16 Start: 14147, Stop: 14320, Start Num: 19

Candidate Starts for Fitzgerald\_16:

(Start: 19 @14147 has 30 MA's), (21, 14171), (26, 14315),

Gene: Fosterous\_15 Start: 14173, Stop: 14346, Start Num: 19  
Candidate Starts for Fosterous\_15:  
(Start: 19 @14173 has 30 MA's), (21, 14197), (26, 14341),

Gene: Geodirt\_17 Start: 14674, Stop: 14847, Start Num: 19  
Candidate Starts for Geodirt\_17:  
(Start: 19 @14674 has 30 MA's), (21, 14698), (26, 14842),

Gene: Hans\_21 Start: 14883, Stop: 15065, Start Num: 19  
Candidate Starts for Hans\_21:  
(6, 14520), (7, 14532), (9, 14589), (10, 14619), (17, 14829), (Start: 18 @14844 has 1 MA's), (Start: 19 @14883 has 30 MA's), (23, 14949),

Gene: Inspectinfecti\_20 Start: 15305, Stop: 15487, Start Num: 19  
Candidate Starts for Inspectinfecti\_20:  
(7, 14954), (10, 15041), (14, 15167), (17, 15251), (Start: 18 @15266 has 1 MA's), (Start: 19 @15305 has 30 MA's), (23, 15371),

Gene: Jabberwocky\_16 Start: 14581, Stop: 14754, Start Num: 19  
Candidate Starts for Jabberwocky\_16:  
(Start: 19 @14581 has 30 MA's), (21, 14605),

Gene: Kewpiedoll\_19 Start: 14627, Stop: 14800, Start Num: 19  
Candidate Starts for Kewpiedoll\_19:  
(Start: 19 @14627 has 30 MA's), (21, 14651), (24, 14693),

Gene: Leonard\_19 Start: 14900, Stop: 15082, Start Num: 19  
Candidate Starts for Leonard\_19:  
(7, 14549), (10, 14636), (14, 14762), (17, 14846), (Start: 18 @14861 has 1 MA's), (Start: 19 @14900 has 30 MA's), (23, 14966),

Gene: MelBins\_20 Start: 15104, Stop: 15286, Start Num: 19  
Candidate Starts for MelBins\_20:  
(7, 14753), (10, 14840), (17, 15050), (Start: 18 @15065 has 1 MA's), (Start: 19 @15104 has 30 MA's), (23, 15170),

Gene: Natkenzie\_19 Start: 15094, Stop: 15276, Start Num: 19  
Candidate Starts for Natkenzie\_19:  
(12, 14902), (Start: 19 @15094 has 30 MA's), (20, 15115), (22, 15130), (26, 15265),

Gene: Phauci\_12 Start: 11467, Stop: 11649, Start Num: 19  
Candidate Starts for Phauci\_12:  
(6, 11104), (7, 11116), (9, 11173), (10, 11203), (17, 11413), (Start: 18 @11428 has 1 MA's), (Start: 19 @11467 has 30 MA's), (23, 11533),

Gene: Phinally\_19 Start: 14897, Stop: 15079, Start Num: 19  
Candidate Starts for Phinally\_19:  
(7, 14546), (10, 14633), (14, 14759), (17, 14843), (Start: 18 @14858 has 1 MA's), (Start: 19 @14897 has 30 MA's), (23, 14963),

Gene: Rofo\_17 Start: 14283, Stop: 14456, Start Num: 19  
Candidate Starts for Rofo\_17:

(Start: 19 @14283 has 30 MA's), (21, 14307), (26, 14451),

Gene: Sampson\_19 Start: 15039, Stop: 15221, Start Num: 19

Candidate Starts for Sampson\_19:

(12, 14847), (Start: 19 @15039 has 30 MA's), (20, 15060), (22, 15075), (26, 15210),

Gene: Sanjuju\_16 Start: 14232, Stop: 14405, Start Num: 19

Candidate Starts for Sanjuju\_16:

(Start: 19 @14232 has 30 MA's), (21, 14256),

Gene: Scioto\_19 Start: 15094, Stop: 15276, Start Num: 19

Candidate Starts for Scioto\_19:

(12, 14902), (Start: 19 @15094 has 30 MA's), (20, 15115), (22, 15130), (26, 15265),

Gene: Shivanishola\_18 Start: 14525, Stop: 14698, Start Num: 19

Candidate Starts for Shivanishola\_18:

(Start: 19 @14525 has 30 MA's), (21, 14549), (26, 14693),

Gene: Stultus\_18 Start: 14527, Stop: 14700, Start Num: 19

Candidate Starts for Stultus\_18:

(Start: 19 @14527 has 30 MA's), (21, 14551),

Gene: Tardus\_20 Start: 14374, Stop: 14556, Start Num: 19

Candidate Starts for Tardus\_20:

(Start: 19 @14374 has 30 MA's), (20, 14395), (22, 14410), (26, 14545),

Gene: Verity\_19 Start: 14557, Stop: 14739, Start Num: 19

Candidate Starts for Verity\_19:

(12, 14365), (Start: 19 @14557 has 30 MA's), (20, 14578), (22, 14593), (26, 14728),

Gene: ViaConlectus\_20 Start: 15109, Stop: 15291, Start Num: 19

Candidate Starts for ViaConlectus\_20:

(Start: 19 @15109 has 30 MA's), (20, 15130), (22, 15145), (26, 15280),

Gene: Zipp\_19 Start: 15206, Stop: 15388, Start Num: 19

Candidate Starts for Zipp\_19:

(Start: 19 @15206 has 30 MA's), (20, 15227), (22, 15242), (26, 15377),

Gene: Zitch\_21 Start: 14336, Stop: 14518, Start Num: 19

Candidate Starts for Zitch\_21:

(Start: 19 @14336 has 30 MA's), (20, 14357), (22, 14372), (25, 14432), (26, 14507),