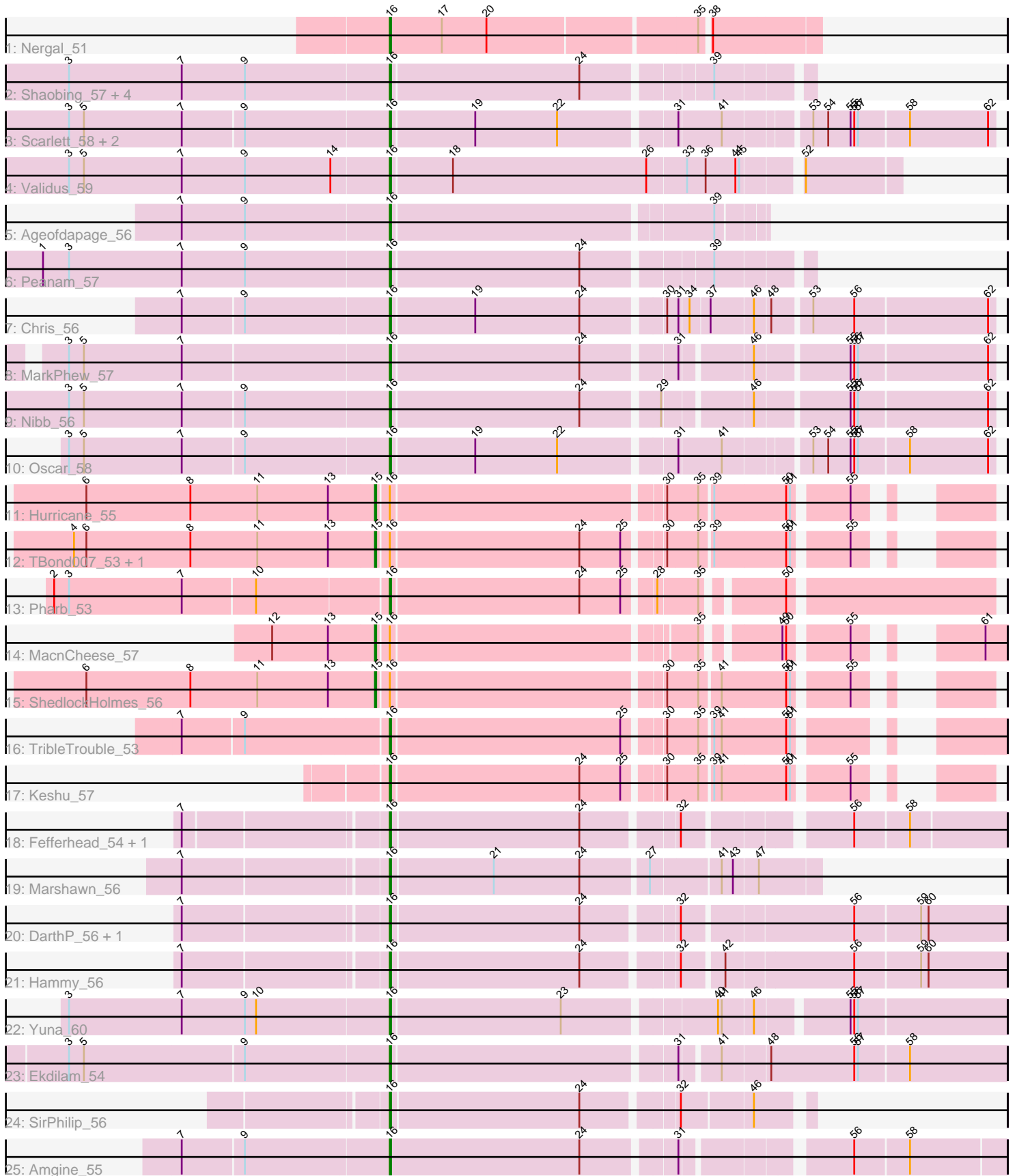


Pham 194205



Note: Tracks are now grouped by subcluster and scaled. Switching in subcluster is indicated by changes in track color. Track scale is now set by default to display the region 30 bp upstream of start 1 to 30 bp downstream of the last possible start. If this default region is judged to be packed too tightly with annotated starts, the track will be further scaled to only show that region of the ORF with annotated starts. This action will be indicated by adding "Zoomed" to the title. For starts, yellow indicates the location of called starts comprised solely of Glimmer/GeneMark auto-annotations, green indicates the location of called starts with at least 1 manual gene annotation.

Pham 194205 Report

This analysis was run 11/02/24 on database version 579.

Pham number 194205 has 34 members, 3 are drafts.

Phages represented in each track:

- Track 1 : Nergal_51
- Track 2 : Shaobing_57, Dartin_57, Niklas_57, Richo_57, McMater_57
- Track 3 : Scarlett_58, LeMond_58, KiSi_58
- Track 4 : Validus_59
- Track 5 : Ageofdapage_56
- Track 6 : Peanam_57
- Track 7 : Chris_56
- Track 8 : MarkPhew_57
- Track 9 : Nibb_56
- Track 10 : Oscar_58
- Track 11 : Hurricane_55
- Track 12 : TBond007_53, Pixie_54
- Track 13 : Pharb_53
- Track 14 : MacnCheese_57
- Track 15 : ShedlockHolmes_56
- Track 16 : TribelTrouble_53
- Track 17 : Keshu_57
- Track 18 : Fefferhead_54, Ellie_52
- Track 19 : Marshawn_56
- Track 20 : DarthP_56, Amohnition_56
- Track 21 : Hammy_56
- Track 22 : Yuna_60
- Track 23 : Ekdilam_54
- Track 24 : SirPhilip_56
- Track 25 : Amgine_55

Summary of Final Annotations (See graph section above for start numbers):

The start number called the most often in the published annotations is 16, it was called in 26 of the 31 non-draft genes in the pham.

Genes that call this "Most Annotated" start:

- Ageofdapage_56, Amgine_55, Amohnition_56, Chris_56, DarthP_56, Dartin_57, Ekdilam_54, Ellie_52, Fefferhead_54, Hammy_56, Keshu_57, KiSi_58, LeMond_58,

MarkPhew_57, Marshawn_56, McMater_57, Nergal_51, Nibb_56, Niklas_57, Oscar_58, Peanam_57, Pharb_53, Richo_57, Scarlett_58, Shaobing_57, SirPhilip_56, TripleTrouble_53, Validus_59, Yuna_60,

Genes that have the "Most Annotated" start but do not call it:

- Hurricane_55, MacnCheese_57, Pixie_54, ShedlockHolmes_56, TBond007_53,

Genes that do not have the "Most Annotated" start:

-

Summary by start number:

Start 15:

- Found in 5 of 34 (14.7%) of genes in pham
- Manual Annotations of this start: 5 of 31
- Called 100.0% of time when present
- Phage (with cluster) where this start called: Hurricane_55 (K3), MacnCheese_57 (K3), Pixie_54 (K3), ShedlockHolmes_56 (K3), TBond007_53 (K3),

Start 16:

- Found in 34 of 34 (100.0%) of genes in pham
- Manual Annotations of this start: 26 of 31
- Called 85.3% of time when present
- Phage (with cluster) where this start called: Ageofdapage_56 (K1), Amgine_55 (K6), Amohnition_56 (K6), Chris_56 (K1), DarthP_56 (K6), Dartin_57 (K1), Ekdilam_54 (K6), Ellie_52 (K6), Fefferhead_54 (K6), Hammy_56 (K6), Keshu_57 (K3), KiSi_58 (K1), LeMond_58 (K1), MarkPhew_57 (K1), Marshawn_56 (K6), McMater_57 (K1), Nergal_51 (AG), Nibb_56 (K1), Niklas_57 (K1), Oscar_58 (K1), Peanam_57 (K1), Pharb_53 (K3), Richo_57 (K1), Scarlett_58 (K1), Shaobing_57 (K1), SirPhilip_56 (K6), TripleTrouble_53 (K3), Validus_59 (K1), Yuna_60 (K6),

Summary by clusters:

There are 4 clusters represented in this pham: K3, K1, K6, AG,

Info for manual annotations of cluster AG:

- Start number 16 was manually annotated 1 time for cluster AG.

Info for manual annotations of cluster K1:

- Start number 16 was manually annotated 12 times for cluster K1.

Info for manual annotations of cluster K3:

- Start number 15 was manually annotated 5 times for cluster K3.
- Start number 16 was manually annotated 3 times for cluster K3.

Info for manual annotations of cluster K6:

- Start number 16 was manually annotated 10 times for cluster K6.

Gene Information:

Gene: Ageofdapage_56 Start: 40108, Stop: 40389, Start Num: 16

Candidate Starts for Ageofdapage_56:

(7, 39943), (9, 39994), (Start: 16 @40108 has 26 MA's), (39, 40354),

Gene: Amgine_55 Start: 40361, Stop: 40816, Start Num: 16

Candidate Starts for Amgine_55:

(7, 40199), (9, 40247), (Start: 16 @40361 has 26 MA's), (24, 40514), (31, 40583), (56, 40700), (58, 40742),

Gene: Amohnition_56 Start: 39941, Stop: 40408, Start Num: 16

Candidate Starts for Amohnition_56:

(7, 39785), (Start: 16 @39941 has 26 MA's), (24, 40091), (32, 40160), (56, 40289), (59, 40340), (60, 40346),

Gene: Chris_56 Start: 39748, Stop: 40203, Start Num: 16

Candidate Starts for Chris_56:

(7, 39586), (9, 39634), (Start: 16 @39748 has 26 MA's), (19, 39814), (24, 39898), (30, 39958), (31, 39967), (34, 39973), (37, 39988), (46, 40021), (48, 40033), (53, 40060), (56, 40093), (62, 40198),

Gene: DarthP_56 Start: 39825, Stop: 40292, Start Num: 16

Candidate Starts for DarthP_56:

(7, 39669), (Start: 16 @39825 has 26 MA's), (24, 39975), (32, 40044), (56, 40173), (59, 40224), (60, 40230),

Gene: Dartin_57 Start: 39804, Stop: 40115, Start Num: 16

Candidate Starts for Dartin_57:

(3, 39549), (7, 39639), (9, 39690), (Start: 16 @39804 has 26 MA's), (24, 39954), (39, 40047),

Gene: Ekdilam_54 Start: 39830, Stop: 40297, Start Num: 16

Candidate Starts for Ekdilam_54:

(3, 39578), (5, 39590), (9, 39716), (Start: 16 @39830 has 26 MA's), (31, 40049), (41, 40076), (48, 40112), (56, 40178), (57, 40181), (58, 40220),

Gene: Ellie_52 Start: 39193, Stop: 39645, Start Num: 16

Candidate Starts for Ellie_52:

(7, 39040), (Start: 16 @39193 has 26 MA's), (24, 39343), (32, 39412), (56, 39529), (58, 39571),

Gene: Fefferhead_54 Start: 39140, Stop: 39592, Start Num: 16

Candidate Starts for Fefferhead_54:

(7, 38987), (Start: 16 @39140 has 26 MA's), (24, 39290), (32, 39359), (56, 39476), (58, 39518),

Gene: Hammy_56 Start: 39813, Stop: 40280, Start Num: 16

Candidate Starts for Hammy_56:

(7, 39657), (Start: 16 @39813 has 26 MA's), (24, 39963), (32, 40032), (42, 40062), (56, 40161), (59, 40212), (60, 40218),

Gene: Hurricane_55 Start: 39527, Stop: 39946, Start Num: 15

Candidate Starts for Hurricane_55:

(6, 39296), (8, 39380), (11, 39434), (13, 39491), (Start: 15 @39527 has 5 MA's), (Start: 16 @39536 has 26 MA's), (30, 39746), (35, 39770), (39, 39779), (50, 39836), (51, 39839), (55, 39878),

Gene: Keshu_57 Start: 39634, Stop: 40044, Start Num: 16

Candidate Starts for Keshu_57:

(Start: 16 @39634 has 26 MA's), (24, 39784), (25, 39817), (30, 39844), (35, 39868), (39, 39877), (41, 39883), (50, 39934), (51, 39937), (55, 39976),

Gene: KiSi_58 Start: 39779, Stop: 40234, Start Num: 16

Candidate Starts for KiSi_58:

(3, 39527), (5, 39539), (7, 39617), (9, 39665), (Start: 16 @39779 has 26 MA's), (19, 39845), (22, 39911), (31, 39998), (41, 40031), (53, 40091), (54, 40103), (55, 40121), (56, 40124), (57, 40127), (58, 40166), (62, 40229),

Gene: LeMond_58 Start: 39760, Stop: 40215, Start Num: 16

Candidate Starts for LeMond_58:

(3, 39508), (5, 39520), (7, 39598), (9, 39646), (Start: 16 @39760 has 26 MA's), (19, 39826), (22, 39892), (31, 39979), (41, 40012), (53, 40072), (54, 40084), (55, 40102), (56, 40105), (57, 40108), (58, 40147), (62, 40210),

Gene: MacnCheese_57 Start: 40122, Stop: 40535, Start Num: 15

Candidate Starts for MacnCheese_57:

(12, 40041), (13, 40086), (Start: 15 @40122 has 5 MA's), (Start: 16 @40131 has 26 MA's), (35, 40362), (49, 40413), (50, 40416), (55, 40458), (61, 40518),

Gene: MarkPhew_57 Start: 39451, Stop: 39903, Start Num: 16

Candidate Starts for MarkPhew_57:

(3, 39199), (5, 39211), (7, 39289), (Start: 16 @39451 has 26 MA's), (24, 39601), (31, 39670), (46, 39721), (55, 39790), (56, 39793), (57, 39796), (62, 39898),

Gene: Marshawn_56 Start: 39609, Stop: 39935, Start Num: 16

Candidate Starts for Marshawn_56:

(7, 39453), (Start: 16 @39609 has 26 MA's), (21, 39690), (24, 39759), (27, 39810), (41, 39861), (43, 39870), (47, 39888),

Gene: McMater_57 Start: 39804, Stop: 40115, Start Num: 16

Candidate Starts for McMater_57:

(3, 39549), (7, 39639), (9, 39690), (Start: 16 @39804 has 26 MA's), (24, 39954), (39, 40047),

Gene: Nergal_51 Start: 37133, Stop: 37462, Start Num: 16

Candidate Starts for Nergal_51:

(Start: 16 @37133 has 26 MA's), (17, 37175), (20, 37211), (35, 37373), (38, 37379),

Gene: Nibb_56 Start: 39155, Stop: 39607, Start Num: 16

Candidate Starts for Nibb_56:

(3, 38903), (5, 38915), (7, 38993), (9, 39041), (Start: 16 @39155 has 26 MA's), (24, 39305), (29, 39362), (46, 39425), (55, 39494), (56, 39497), (57, 39500), (62, 39602),

Gene: Niklas_57 Start: 39865, Stop: 40176, Start Num: 16

Candidate Starts for Niklas_57:

(3, 39610), (7, 39700), (9, 39751), (Start: 16 @39865 has 26 MA's), (24, 40015), (39, 40108),

Gene: Oscar_58 Start: 39665, Stop: 40120, Start Num: 16

Candidate Starts for Oscar_58:

(3, 39413), (5, 39425), (7, 39503), (9, 39551), (Start: 16 @39665 has 26 MA's), (19, 39731), (22, 39797), (31, 39884), (41, 39917), (53, 39977), (54, 39989), (55, 40007), (56, 40010), (57, 40013), (58, 40052), (62, 40115),

Gene: Peanam_57 Start: 39823, Stop: 40134, Start Num: 16

Candidate Starts for Peanam_57:

(1, 39547), (3, 39568), (7, 39658), (9, 39709), (Start: 16 @39823 has 26 MA's), (24, 39973), (39, 40066),

Gene: Pharb_53 Start: 38444, Stop: 38890, Start Num: 16

Candidate Starts for Pharb_53:

(2, 38183), (3, 38195), (7, 38285), (10, 38342), (Start: 16 @38444 has 26 MA's), (24, 38594), (25, 38627), (28, 38648), (35, 38678), (50, 38732),

Gene: Pixie_54 Start: 39065, Stop: 39484, Start Num: 15

Candidate Starts for Pixie_54:

(4, 38825), (6, 38834), (8, 38918), (11, 38972), (13, 39029), (Start: 15 @39065 has 5 MA's), (Start: 16 @39074 has 26 MA's), (24, 39224), (25, 39257), (30, 39284), (35, 39308), (39, 39317), (50, 39374), (51, 39377), (55, 39416),

Gene: Richo_57 Start: 39804, Stop: 40115, Start Num: 16

Candidate Starts for Richo_57:

(3, 39549), (7, 39639), (9, 39690), (Start: 16 @39804 has 26 MA's), (24, 39954), (39, 40047),

Gene: Scarlett_58 Start: 39660, Stop: 40115, Start Num: 16

Candidate Starts for Scarlett_58:

(3, 39408), (5, 39420), (7, 39498), (9, 39546), (Start: 16 @39660 has 26 MA's), (19, 39726), (22, 39792), (31, 39879), (41, 39912), (53, 39972), (54, 39984), (55, 40002), (56, 40005), (57, 40008), (58, 40047), (62, 40110),

Gene: Shaobing_57 Start: 39841, Stop: 40152, Start Num: 16

Candidate Starts for Shaobing_57:

(3, 39586), (7, 39676), (9, 39727), (Start: 16 @39841 has 26 MA's), (24, 39991), (39, 40084),

Gene: ShedlockHolmes_56 Start: 39584, Stop: 40003, Start Num: 15

Candidate Starts for ShedlockHolmes_56:

(6, 39353), (8, 39437), (11, 39491), (13, 39548), (Start: 15 @39584 has 5 MA's), (Start: 16 @39593 has 26 MA's), (30, 39803), (35, 39827), (41, 39842), (50, 39893), (51, 39896), (55, 39935),

Gene: SirPhilip_56 Start: 40093, Stop: 40404, Start Num: 16

Candidate Starts for SirPhilip_56:

(Start: 16 @40093 has 26 MA's), (24, 40243), (32, 40312), (46, 40366),

Gene: TBond007_53 Start: 39064, Stop: 39483, Start Num: 15

Candidate Starts for TBond007_53:

(4, 38824), (6, 38833), (8, 38917), (11, 38971), (13, 39028), (Start: 15 @39064 has 5 MA's), (Start: 16 @39073 has 26 MA's), (24, 39223), (25, 39256), (30, 39283), (35, 39307), (39, 39316), (50, 39373), (51, 39376), (55, 39415),

Gene: TribelTrouble_53 Start: 39295, Stop: 39714, Start Num: 16

Candidate Starts for TribelTrouble_53:

(7, 39136), (9, 39184), (Start: 16 @39295 has 26 MA's), (25, 39478), (30, 39505), (35, 39529), (39, 39538), (41, 39544), (50, 39595), (51, 39598),

Gene: Validus_59 Start: 40022, Stop: 40411, Start Num: 16

Candidate Starts for Validus_59:

(3, 39767), (5, 39779), (7, 39857), (9, 39908), (14, 39977), (Start: 16 @40022 has 26 MA's), (18, 40070), (26, 40226), (33, 40256), (36, 40271), (44, 40295), (45, 40298), (52, 40337),

Gene: Yuna_60 Start: 40495, Stop: 40959, Start Num: 16

Candidate Starts for Yuna_60:

(3, 40240), (7, 40330), (9, 40381), (10, 40390), (Start: 16 @40495 has 26 MA's), (23, 40630), (40, 40744), (41, 40747), (46, 40771), (55, 40837), (56, 40840), (57, 40843),