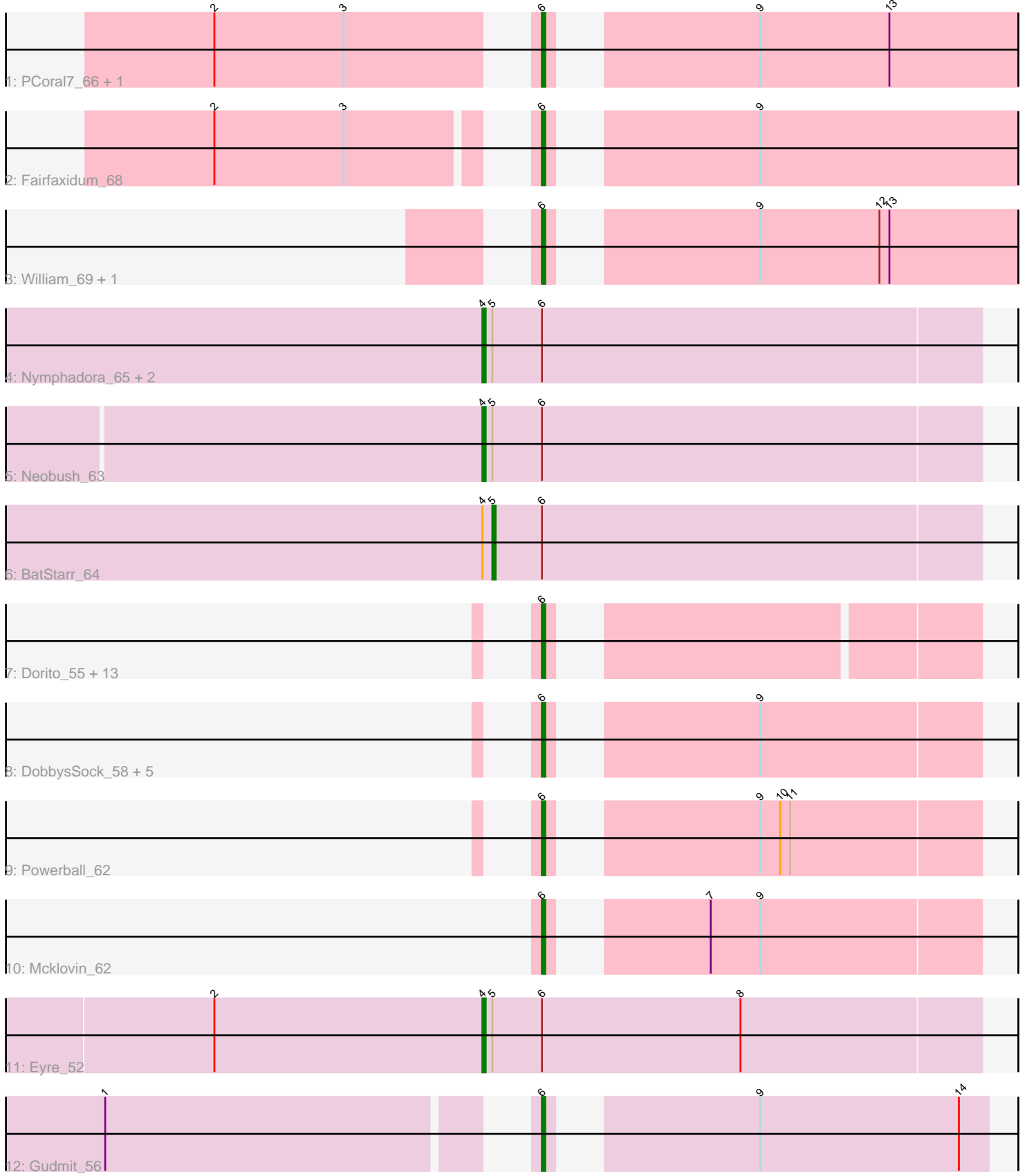


Pham 194206



Note: Tracks are now grouped by subcluster and scaled. Switching in subcluster is indicated by changes in track color. Track scale is now set by default to display the region 30 bp upstream of start 1 to 30 bp downstream of the last possible start. If this default region is judged to be packed too tightly with annotated starts, the track will be further scaled to only show that region of the ORF with annotated starts. This action will be indicated by adding "Zoomed" to the title. For starts, yellow indicates the location of called starts comprised solely of Glimmer/GeneMark auto-annotations, green indicates the location of called starts with at least 1 manual gene annotation.

Pham 194206 Report

This analysis was run 11/02/24 on database version 579.

Pham number 194206 has 34 members, 2 are drafts.

Phages represented in each track:

- Track 1 : PCoral7_66, Toast_66
- Track 2 : Fairfaxidum_68
- Track 3 : William_69, PrincePatrick_67
- Track 4 : Nymphadora_65, TimTam_65, Eviarto_65
- Track 5 : Neobush_63
- Track 6 : BatStarr_64
- Track 7 : Dorito_55, Twinkle_63, Howe_64, Dolores_62, Sekhmet_61, Thimann_64, PhriskyACE_61, Easley_59, Adora_61, MichaelScott_65, Hortense_64, WinkNick_62, Oregano_64, Shlim410_62
- Track 8 : DobbysSock_58, Beenie_58, Suerte_57, Annalisa_63, Samman98_64, Clark_63
- Track 9 : Powerball_62
- Track 10 : Mcklovin_62
- Track 11 : Eyre_52
- Track 12 : Gudmit_56

Summary of Final Annotations (See graph section above for start numbers):

The start number called the most often in the published annotations is 6, it was called in 26 of the 32 non-draft genes in the pham.

Genes that call this "Most Annotated" start:

- Adora_61, Annalisa_63, Beenie_58, Clark_63, DobbysSock_58, Dolores_62, Dorito_55, Easley_59, Fairfaxidum_68, Gudmit_56, Hortense_64, Howe_64, Mcklovin_62, MichaelScott_65, Oregano_64, PCoral7_66, PhriskyACE_61, Powerball_62, PrincePatrick_67, Samman98_64, Sekhmet_61, Shlim410_62, Suerte_57, Thimann_64, Toast_66, Twinkle_63, William_69, WinkNick_62,

Genes that have the "Most Annotated" start but do not call it:

- BatStarr_64, Eviarto_65, Eyre_52, Neobush_63, Nymphadora_65, TimTam_65,

Genes that do not have the "Most Annotated" start:

-

Summary by start number:

Start 4:

- Found in 6 of 34 (17.6%) of genes in pham
- Manual Annotations of this start: 5 of 32
- Called 83.3% of time when present
- Phage (with cluster) where this start called: Eviarto_65 (CZ1), Eyre_52 (singleton), Neobush_63 (CZ1), Nymphadora_65 (CZ1), TimTam_65 (CZ1),

Start 5:

- Found in 6 of 34 (17.6%) of genes in pham
- Manual Annotations of this start: 1 of 32
- Called 16.7% of time when present
- Phage (with cluster) where this start called: BatStarr_64 (CZ1),

Start 6:

- Found in 34 of 34 (100.0%) of genes in pham
- Manual Annotations of this start: 26 of 32
- Called 82.4% of time when present
- Phage (with cluster) where this start called: Adora_61 (CZ4), Annalisa_63 (CZ4), Beenie_58 (CZ4), Clark_63 (CZ4), DobbysSock_58 (CZ4), Dolores_62 (CZ4), Dorito_55 (CZ4), Easley_59 (CZ4), Fairfaxidum_68 (CV), Gudmit_56 (singleton), Hortense_64 (CZ4), Howe_64 (CZ4), Mcklovin_62 (CZ4), MichaelScott_65 (CZ4), Oregano_64 (CZ4), PCoral7_66 (CV), PhriskyACE_61 (CZ4), Powerball_62 (CZ4), PrincePatrick_67 (CV), Samman98_64 (CZ4), Sekhmet_61 (CZ4), Shlim410_62 (CZ4), Suerte_57 (CZ4), Thimann_64 (CZ4), Toast_66 (CV), Twinkle_63 (CZ4), William_69 (CV), WinkNick_62 (CZ4),

Summary by clusters:

There are 4 clusters represented in this pham: singleton, CZ1, CV, CZ4,

Info for manual annotations of cluster CV:

- Start number 6 was manually annotated 5 times for cluster CV.

Info for manual annotations of cluster CZ1:

- Start number 4 was manually annotated 4 times for cluster CZ1.
- Start number 5 was manually annotated 1 time for cluster CZ1.

Info for manual annotations of cluster CZ4:

- Start number 6 was manually annotated 20 times for cluster CZ4.

Gene Information:

Gene: Adora_61 Start: 43146, Stop: 43259, Start Num: 6

Candidate Starts for Adora_61:

(Start: 6 @43146 has 26 MA's),

Gene: Annalisa_63 Start: 40463, Stop: 40579, Start Num: 6

Candidate Starts for Annalisa_63:

(Start: 6 @40463 has 26 MA's), (9, 40514),

Gene: BatStarr_64 Start: 44581, Stop: 44727, Start Num: 5
Candidate Starts for BatStarr_64:
(Start: 4 @44578 has 5 MA's), (Start: 5 @44581 has 1 MA's), (Start: 6 @44596 has 26 MA's),

Gene: Beenie_58 Start: 41191, Stop: 41307, Start Num: 6
Candidate Starts for Beenie_58:
(Start: 6 @41191 has 26 MA's), (9, 41242),

Gene: Clark_63 Start: 40954, Stop: 41070, Start Num: 6
Candidate Starts for Clark_63:
(Start: 6 @40954 has 26 MA's), (9, 41005),

Gene: DobbysSock_58 Start: 40602, Stop: 40718, Start Num: 6
Candidate Starts for DobbysSock_58:
(Start: 6 @40602 has 26 MA's), (9, 40653),

Gene: Dolores_62 Start: 40290, Stop: 40403, Start Num: 6
Candidate Starts for Dolores_62:
(Start: 6 @40290 has 26 MA's),

Gene: Dorito_55 Start: 38107, Stop: 38220, Start Num: 6
Candidate Starts for Dorito_55:
(Start: 6 @38107 has 26 MA's),

Gene: Easley_59 Start: 39801, Stop: 39899, Start Num: 6
Candidate Starts for Easley_59:
(Start: 6 @39801 has 26 MA's),

Gene: Eviarto_65 Start: 44553, Stop: 44702, Start Num: 4
Candidate Starts for Eviarto_65:
(Start: 4 @44553 has 5 MA's), (Start: 5 @44556 has 1 MA's), (Start: 6 @44571 has 26 MA's),

Gene: Eyre_52 Start: 35630, Stop: 35779, Start Num: 4
Candidate Starts for Eyre_52:
(2, 35549), (Start: 4 @35630 has 5 MA's), (Start: 5 @35633 has 1 MA's), (Start: 6 @35648 has 26 MA's), (8, 35708),

Gene: Fairfaxidum_68 Start: 43559, Stop: 43687, Start Num: 6
Candidate Starts for Fairfaxidum_68:
(2, 43478), (3, 43517), (Start: 6 @43559 has 26 MA's), (9, 43610),

Gene: Gudmit_56 Start: 33859, Stop: 33978, Start Num: 6
Candidate Starts for Gudmit_56:
(1, 33745), (Start: 6 @33859 has 26 MA's), (9, 33910), (14, 33970),

Gene: Hortense_64 Start: 44501, Stop: 44614, Start Num: 6
Candidate Starts for Hortense_64:
(Start: 6 @44501 has 26 MA's),

Gene: Howe_64 Start: 44501, Stop: 44614, Start Num: 6
Candidate Starts for Howe_64:
(Start: 6 @44501 has 26 MA's),

Gene: Mcklovin_62 Start: 46828, Stop: 46944, Start Num: 6

Candidate Starts for Mcklovin_62:

(Start: 6 @46828 has 26 MA's), (7, 46864), (9, 46879),

Gene: MichaelScott_65 Start: 42221, Stop: 42334, Start Num: 6

Candidate Starts for MichaelScott_65:

(Start: 6 @42221 has 26 MA's),

Gene: Neobush_63 Start: 42127, Stop: 42276, Start Num: 4

Candidate Starts for Neobush_63:

(Start: 4 @42127 has 5 MA's), (Start: 5 @42130 has 1 MA's), (Start: 6 @42145 has 26 MA's),

Gene: Nymphadora_65 Start: 44577, Stop: 44726, Start Num: 4

Candidate Starts for Nymphadora_65:

(Start: 4 @44577 has 5 MA's), (Start: 5 @44580 has 1 MA's), (Start: 6 @44595 has 26 MA's),

Gene: Oregano_64 Start: 41095, Stop: 41208, Start Num: 6

Candidate Starts for Oregano_64:

(Start: 6 @41095 has 26 MA's),

Gene: PCoral7_66 Start: 42700, Stop: 42828, Start Num: 6

Candidate Starts for PCoral7_66:

(2, 42616), (3, 42655), (Start: 6 @42700 has 26 MA's), (9, 42751), (13, 42790),

Gene: PhriskyACE_61 Start: 41112, Stop: 41225, Start Num: 6

Candidate Starts for PhriskyACE_61:

(Start: 6 @41112 has 26 MA's),

Gene: Powerball_62 Start: 41218, Stop: 41334, Start Num: 6

Candidate Starts for Powerball_62:

(Start: 6 @41218 has 26 MA's), (9, 41269), (10, 41275), (11, 41278),

Gene: PrincePatrick_67 Start: 41750, Stop: 41878, Start Num: 6

Candidate Starts for PrincePatrick_67:

(Start: 6 @41750 has 26 MA's), (9, 41801), (12, 41837), (13, 41840),

Gene: Samman98_64 Start: 41057, Stop: 41173, Start Num: 6

Candidate Starts for Samman98_64:

(Start: 6 @41057 has 26 MA's), (9, 41108),

Gene: Sekhmet_61 Start: 40689, Stop: 40802, Start Num: 6

Candidate Starts for Sekhmet_61:

(Start: 6 @40689 has 26 MA's),

Gene: Shlim410_62 Start: 44501, Stop: 44614, Start Num: 6

Candidate Starts for Shlim410_62:

(Start: 6 @44501 has 26 MA's),

Gene: Suerte_57 Start: 40021, Stop: 40137, Start Num: 6

Candidate Starts for Suerte_57:

(Start: 6 @40021 has 26 MA's), (9, 40072),

Gene: Thimann_64 Start: 41329, Stop: 41442, Start Num: 6
Candidate Starts for Thimann_64:
(Start: 6 @41329 has 26 MA's),

Gene: TimTam_65 Start: 44577, Stop: 44726, Start Num: 4
Candidate Starts for TimTam_65:
(Start: 4 @44577 has 5 MA's), (Start: 5 @44580 has 1 MA's), (Start: 6 @44595 has 26 MA's),

Gene: Toast_66 Start: 42700, Stop: 42828, Start Num: 6
Candidate Starts for Toast_66:
(2, 42616), (3, 42655), (Start: 6 @42700 has 26 MA's), (9, 42751), (13, 42790),

Gene: Twinkle_63 Start: 45560, Stop: 45673, Start Num: 6
Candidate Starts for Twinkle_63:
(Start: 6 @45560 has 26 MA's),

Gene: William_69 Start: 44098, Stop: 44226, Start Num: 6
Candidate Starts for William_69:
(Start: 6 @44098 has 26 MA's), (9, 44149), (12, 44185), (13, 44188),

Gene: WinkNick_62 Start: 40213, Stop: 40326, Start Num: 6
Candidate Starts for WinkNick_62:
(Start: 6 @40213 has 26 MA's),