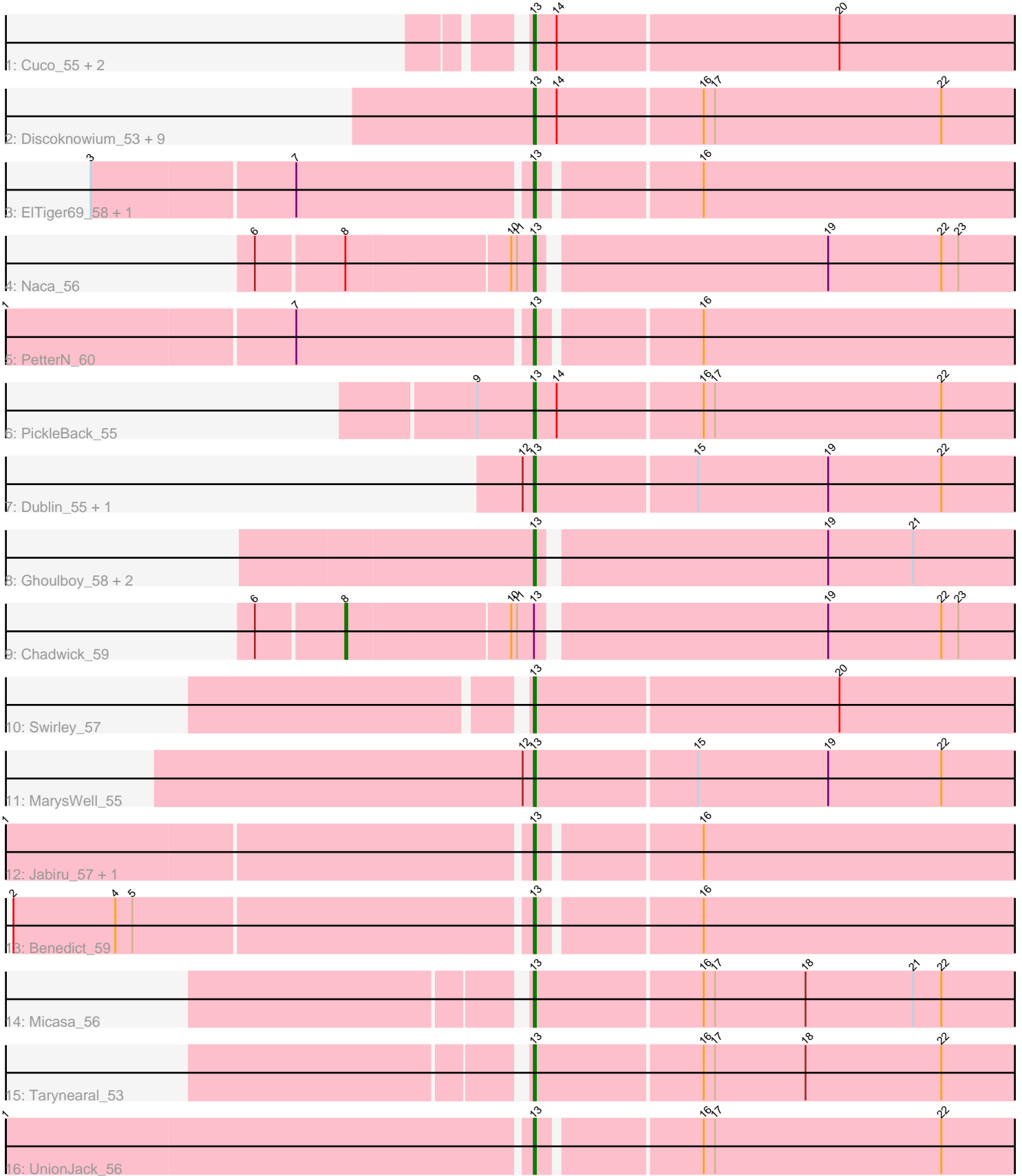


Pham 194224



Note: Tracks are now grouped by subcluster and scaled. Switching in subcluster is indicated by changes in track color. Track scale is now set by default to display the region 30 bp upstream of start 1 to 30 bp downstream of the last possible start. If this default region is judged to be packed too tightly with annotated starts, the track will be further scaled to only show that region of the ORF with annotated starts. This action will be indicated by adding "Zoomed" to the title. For starts, yellow indicates the location of called starts comprised solely of Glimmer/GeneMark auto-annotations, green indicates the location of called starts with at least 1 manual gene annotation.

## Pham 194224 Report

This analysis was run 11/02/24 on database version 579.

Pham number 194224 has 32 members, 0 are drafts.

Phages represented in each track:

- Track 1 : Cuco\_55, Coog\_54, Midas2\_54
- Track 2 : Discoknowium\_53, Jovo\_55, Lev2\_55, Archetta\_54, Conspiracy\_55, ForGetIt\_55, Tiger\_54, Aragog\_54, AgentM\_54, Phlorence\_53
- Track 3 : ElTiger69\_58, Airmid\_56
- Track 4 : Naca\_56
- Track 5 : PetterN\_60
- Track 6 : PickleBack\_55
- Track 7 : Dublin\_55, Theia\_54
- Track 8 : Ghoulboy\_58, SydNat\_58, Zolita\_57
- Track 9 : Chadwick\_59
- Track 10 : Swirley\_57
- Track 11 : MarysWell\_55
- Track 12 : Jabiru\_57, Scorpia\_60
- Track 13 : Benedict\_59
- Track 14 : Micasa\_56
- Track 15 : Tarynearal\_53
- Track 16 : UnionJack\_56

### ***Summary of Final Annotations (See graph section above for start numbers):***

The start number called the most often in the published annotations is 13, it was called in 31 of the 32 non-draft genes in the pham.

Genes that call this "Most Annotated" start:

- AgentM\_54, Airmid\_56, Aragog\_54, Archetta\_54, Benedict\_59, Conspiracy\_55, Coog\_54, Cuco\_55, Discoknowium\_53, Dublin\_55, ElTiger69\_58, ForGetIt\_55, Ghoulboy\_58, Jabiru\_57, Jovo\_55, Lev2\_55, MarysWell\_55, Micasa\_56, Midas2\_54, Naca\_56, PetterN\_60, Phlorence\_53, PickleBack\_55, Scorpia\_60, Swirley\_57, SydNat\_58, Tarynearal\_53, Theia\_54, Tiger\_54, UnionJack\_56, Zolita\_57,

Genes that have the "Most Annotated" start but do not call it:

- Chadwick\_59,

Genes that do not have the "Most Annotated" start:

- 

### Summary by start number:

#### Start 8:

- Found in 2 of 32 ( 6.2% ) of genes in pham
- Manual Annotations of this start: 1 of 32
- Called 50.0% of time when present
- Phage (with cluster) where this start called: Chadwick\_59 (A5),

#### Start 13:

- Found in 32 of 32 ( 100.0% ) of genes in pham
- Manual Annotations of this start: 31 of 32
- Called 96.9% of time when present
- Phage (with cluster) where this start called: AgentM\_54 (A5), Airmid\_56 (A5), Aragog\_54 (A5), Archetta\_54 (A5), Benedict\_59 (A5), Conspiracy\_55 (A5), Coog\_54 (A5), Cuco\_55 (A5), Discoknowium\_53 (A5), Dublin\_55 (A5), ElTiger69\_58 (A5), ForGetIt\_55 (A5), Ghoulboy\_58 (A5), Jabiru\_57 (A5), Jovo\_55 (A5), Lev2\_55 (A5), MarysWell\_55 (A5), Micasa\_56 (A5), Midas2\_54 (A5), Naca\_56 (A5), PetterN\_60 (A5), Phlorence\_53 (A5), PickleBack\_55 (A5), Scorpia\_60 (A5), Swirley\_57 (A5), SydNat\_58 (A5), Tarynearal\_53 (A5), Theia\_54 (A5), Tiger\_54 (A5), UnionJack\_56 (A5), Zolita\_57 (A5),

### Summary by clusters:

There is one cluster represented in this pham: A5

#### Info for manual annotations of cluster A5:

- Start number 8 was manually annotated 1 time for cluster A5.
- Start number 13 was manually annotated 31 times for cluster A5.

### Gene Information:

Gene: AgentM\_54 Start: 38609, Stop: 38352, Start Num: 13

Candidate Starts for AgentM\_54:

(Start: 13 @38609 has 31 MA's), (14, 38597), (16, 38522), (17, 38516), (22, 38396),

Gene: Airmid\_56 Start: 38747, Stop: 38496, Start Num: 13

Candidate Starts for Airmid\_56:

(3, 38972), (7, 38867), (Start: 13 @38747 has 31 MA's), (16, 38666),

Gene: Aragog\_54 Start: 38629, Stop: 38372, Start Num: 13

Candidate Starts for Aragog\_54:

(Start: 13 @38629 has 31 MA's), (14, 38617), (16, 38542), (17, 38536), (22, 38416),

Gene: Archetta\_54 Start: 39039, Stop: 38782, Start Num: 13

Candidate Starts for Archetta\_54:

(Start: 13 @39039 has 31 MA's), (14, 39027), (16, 38952), (17, 38946), (22, 38826),

Gene: Benedict\_59 Start: 38995, Stop: 38744, Start Num: 13

Candidate Starts for Benedict\_59:

(2, 39262), (4, 39208), (5, 39199), (Start: 13 @38995 has 31 MA's), (16, 38914),

Gene: Chadwick\_59 Start: 38932, Stop: 38585, Start Num: 8

Candidate Starts for Chadwick\_59:

(6, 38977), (Start: 8 @38932 has 1 MA's), (10, 38848), (11, 38845), (Start: 13 @38836 has 31 MA's), (19, 38689), (22, 38629), (23, 38620),

Gene: Conspiracy\_55 Start: 38851, Stop: 38594, Start Num: 13

Candidate Starts for Conspiracy\_55:

(Start: 13 @38851 has 31 MA's), (14, 38839), (16, 38764), (17, 38758), (22, 38638),

Gene: Coog\_54 Start: 39045, Stop: 38788, Start Num: 13

Candidate Starts for Coog\_54:

(Start: 13 @39045 has 31 MA's), (14, 39033), (20, 38886),

Gene: Cuco\_55 Start: 38905, Stop: 38648, Start Num: 13

Candidate Starts for Cuco\_55:

(Start: 13 @38905 has 31 MA's), (14, 38893), (20, 38746),

Gene: Discoknowium\_53 Start: 38518, Stop: 38261, Start Num: 13

Candidate Starts for Discoknowium\_53:

(Start: 13 @38518 has 31 MA's), (14, 38506), (16, 38431), (17, 38425), (22, 38305),

Gene: Dublin\_55 Start: 39020, Stop: 38763, Start Num: 13

Candidate Starts for Dublin\_55:

(12, 39026), (Start: 13 @39020 has 31 MA's), (15, 38936), (19, 38867), (22, 38807),

Gene: EITiger69\_58 Start: 38971, Stop: 38720, Start Num: 13

Candidate Starts for EITiger69\_58:

(3, 39196), (7, 39091), (Start: 13 @38971 has 31 MA's), (16, 38890),

Gene: ForGetIt\_55 Start: 38876, Stop: 38619, Start Num: 13

Candidate Starts for ForGetIt\_55:

(Start: 13 @38876 has 31 MA's), (14, 38864), (16, 38789), (17, 38783), (22, 38663),

Gene: Ghouboy\_58 Start: 39749, Stop: 39498, Start Num: 13

Candidate Starts for Ghouboy\_58:

(Start: 13 @39749 has 31 MA's), (19, 39602), (21, 39557),

Gene: Jabiru\_57 Start: 38850, Stop: 38599, Start Num: 13

Candidate Starts for Jabiru\_57:

(1, 39120), (Start: 13 @38850 has 31 MA's), (16, 38769),

Gene: Jovo\_55 Start: 39132, Stop: 38875, Start Num: 13

Candidate Starts for Jovo\_55:

(Start: 13 @39132 has 31 MA's), (14, 39120), (16, 39045), (17, 39039), (22, 38919),

Gene: Lev2\_55 Start: 38764, Stop: 38507, Start Num: 13

Candidate Starts for Lev2\_55:

(Start: 13 @38764 has 31 MA's), (14, 38752), (16, 38677), (17, 38671), (22, 38551),

Gene: MarysWell\_55 Start: 39263, Stop: 39006, Start Num: 13

Candidate Starts for MarysWell\_55:

(12, 39269), (Start: 13 @39263 has 31 MA's), (15, 39179), (19, 39110), (22, 39050),

Gene: Micasa\_56 Start: 39137, Stop: 38880, Start Num: 13

Candidate Starts for Micasa\_56:

(Start: 13 @39137 has 31 MA's), (16, 39050), (17, 39044), (18, 38996), (21, 38939), (22, 38924),

Gene: Midas2\_54 Start: 39045, Stop: 38788, Start Num: 13

Candidate Starts for Midas2\_54:

(Start: 13 @39045 has 31 MA's), (14, 39033), (20, 38886),

Gene: Naca\_56 Start: 39389, Stop: 39138, Start Num: 13

Candidate Starts for Naca\_56:

(6, 39530), (Start: 8 @39485 has 1 MA's), (10, 39401), (11, 39398), (Start: 13 @39389 has 31 MA's), (19, 39242), (22, 39182), (23, 39173),

Gene: PetterN\_60 Start: 39004, Stop: 38753, Start Num: 13

Candidate Starts for PetterN\_60:

(1, 39274), (7, 39124), (Start: 13 @39004 has 31 MA's), (16, 38923),

Gene: Phlorence\_53 Start: 38509, Stop: 38252, Start Num: 13

Candidate Starts for Phlorence\_53:

(Start: 13 @38509 has 31 MA's), (14, 38497), (16, 38422), (17, 38416), (22, 38296),

Gene: PickleBack\_55 Start: 38756, Stop: 38499, Start Num: 13

Candidate Starts for PickleBack\_55:

(9, 38786), (Start: 13 @38756 has 31 MA's), (14, 38744), (16, 38669), (17, 38663), (22, 38543),

Gene: Scorpia\_60 Start: 39063, Stop: 38812, Start Num: 13

Candidate Starts for Scorpia\_60:

(1, 39333), (Start: 13 @39063 has 31 MA's), (16, 38982),

Gene: Swirley\_57 Start: 39125, Stop: 38868, Start Num: 13

Candidate Starts for Swirley\_57:

(Start: 13 @39125 has 31 MA's), (20, 38966),

Gene: SydNat\_58 Start: 39758, Stop: 39507, Start Num: 13

Candidate Starts for SydNat\_58:

(Start: 13 @39758 has 31 MA's), (19, 39611), (21, 39566),

Gene: Tarynearal\_53 Start: 38570, Stop: 38313, Start Num: 13

Candidate Starts for Tarynearal\_53:

(Start: 13 @38570 has 31 MA's), (16, 38483), (17, 38477), (18, 38429), (22, 38357),

Gene: Theia\_54 Start: 39244, Stop: 38987, Start Num: 13

Candidate Starts for Theia\_54:

(12, 39250), (Start: 13 @39244 has 31 MA's), (15, 39160), (19, 39091), (22, 39031),

Gene: Tiger\_54 Start: 38430, Stop: 38173, Start Num: 13

Candidate Starts for Tiger\_54:

(Start: 13 @38430 has 31 MA's), (14, 38418), (16, 38343), (17, 38337), (22, 38217),

Gene: UnionJack\_56 Start: 38568, Stop: 38317, Start Num: 13

Candidate Starts for UnionJack\_56:

(1, 38841), (Start: 13 @38568 has 31 MA's), (16, 38487), (17, 38481), (22, 38361),

Gene: Zolita\_57 Start: 39762, Stop: 39511, Start Num: 13

Candidate Starts for Zolita\_57:

(Start: 13 @39762 has 31 MA's), (19, 39615), (21, 39570),