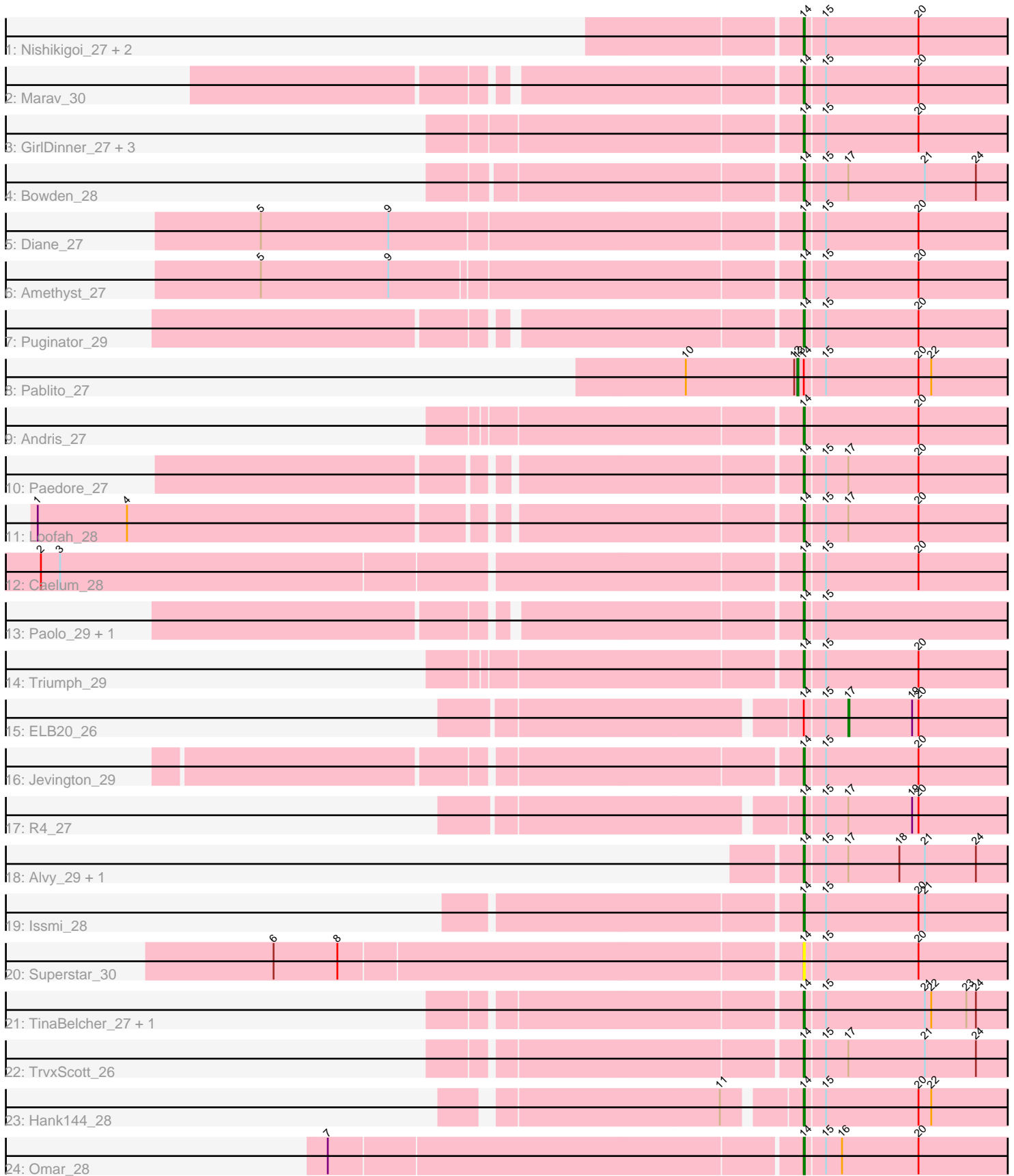


Pham 194227



Note: Tracks are now grouped by subcluster and scaled. Switching in subcluster is indicated by changes in track color. Track scale is now set by default to display the region 30 bp upstream of start 1 to 30 bp downstream of the last possible start. If this default region is judged to be packed too tightly with annotated starts, the track will be further scaled to only show that region of the ORF with annotated starts. This action will be indicated by adding "Zoomed" to the title. For starts, yellow indicates the location of called starts comprised solely of Glimmer/GeneMark auto-annotations, green indicates the location of called starts with at least 1 manual gene annotation.

Pham 194227 Report

This analysis was run 11/02/24 on database version 579.

Pham number 194227 has 32 members, 1 are drafts.

Phages represented in each track:

- Track 1 : Nishikigoi_27, Haizum_27, Tefunt_27
- Track 2 : Marav_30
- Track 3 : GirlDinner_27, SqueakyClean_28, Janus_28, Animus_28
- Track 4 : Bowden_28
- Track 5 : Diane_27
- Track 6 : Amethyst_27
- Track 7 : Puginator_29
- Track 8 : Pablito_27
- Track 9 : Andris_27
- Track 10 : Paedore_27
- Track 11 : Loofah_28
- Track 12 : Caelum_28
- Track 13 : Paolo_29, Zainub_29
- Track 14 : Triumph_29
- Track 15 : ELB20_26
- Track 16 : Jevington_29
- Track 17 : R4_27
- Track 18 : Alvy_29, BartholomewSD_29
- Track 19 : Issmi_28
- Track 20 : Superstar_30
- Track 21 : TinaBelcher_27, Thestral_28
- Track 22 : TrvxScott_26
- Track 23 : Hank144_28
- Track 24 : Omar_28

Summary of Final Annotations (See graph section above for start numbers):

The start number called the most often in the published annotations is 14, it was called in 29 of the 31 non-draft genes in the pham.

Genes that call this "Most Annotated" start:

- Alvy_29, Amethyst_27, Andris_27, Animus_28, BartholomewSD_29, Bowden_28, Caelum_28, Diane_27, GirlDinner_27, Haizum_27, Hank144_28, Issmi_28, Janus_28, Jevington_29, Loofah_28, Marav_30, Nishikigoi_27, Omar_28,

Paedore_27, Paolo_29, Puginator_29, R4_27, SqueakyClean_28, Superstar_30, Tefunt_27, Thestral_28, TinaBelcher_27, Triumph_29, TrvxScott_26, Zainub_29,

Genes that have the "Most Annotated" start but do not call it:

- ELB20_26, Pablito_27,

Genes that do not have the "Most Annotated" start:

-

Summary by start number:

Start 13:

- Found in 1 of 32 (3.1%) of genes in pham
- Manual Annotations of this start: 1 of 31
- Called 100.0% of time when present
- Phage (with cluster) where this start called: Pablito_27 (BD2),

Start 14:

- Found in 32 of 32 (100.0%) of genes in pham
- Manual Annotations of this start: 29 of 31
- Called 93.8% of time when present
- Phage (with cluster) where this start called: Alvy_29 (BD2), Amethyst_27 (BD2), Andris_27 (BD2), Animus_28 (BD2), BartholomewSD_29 (BD2), Bowden_28 (BD2), Caelum_28 (BD2), Diane_27 (BD2), GirlDinner_27 (BD2), Haizum_27 (BD2), Hank144_28 (BD2), Issmi_28 (BD2), Janus_28 (BD2), Jevington_29 (BD2), Loofah_28 (BD2), Marav_30 (BD2), Nishikigoi_27 (BD2), Omar_28 (BD2), Paedore_27 (BD2), Paolo_29 (BD2), Puginator_29 (BD2), R4_27 (BD2), SqueakyClean_28 (BD2), Superstar_30 (BD2), Tefunt_27 (BD2), Thestral_28 (BD2), TinaBelcher_27 (BD2), Triumph_29 (BD2), TrvxScott_26 (BD2), Zainub_29 (BD2),

Start 17:

- Found in 8 of 32 (25.0%) of genes in pham
- Manual Annotations of this start: 1 of 31
- Called 12.5% of time when present
- Phage (with cluster) where this start called: ELB20_26 (BD2),

Summary by clusters:

There is one cluster represented in this pham: BD2

Info for manual annotations of cluster BD2:

- Start number 13 was manually annotated 1 time for cluster BD2.
- Start number 14 was manually annotated 29 times for cluster BD2.
- Start number 17 was manually annotated 1 time for cluster BD2.

Gene Information:

Gene: Alvy_29 Start: 22860, Stop: 23069, Start Num: 14

Candidate Starts for Alvy_29:

(Start: 14 @22860 has 29 MA's), (15, 22878), (Start: 17 @22899 has 1 MA's), (18, 22947), (21, 22971), (24, 23019),

Gene: Amethyst_27 Start: 22528, Stop: 22740, Start Num: 14

Candidate Starts for Amethyst_27:

(5, 22036), (9, 22156), (Start: 14 @22528 has 29 MA's), (15, 22546), (20, 22633),

Gene: Andris_27 Start: 22516, Stop: 22728, Start Num: 14

Candidate Starts for Andris_27:

(Start: 14 @22516 has 29 MA's), (20, 22621),

Gene: Animus_28 Start: 22858, Stop: 23064, Start Num: 14

Candidate Starts for Animus_28:

(Start: 14 @22858 has 29 MA's), (15, 22876), (20, 22963),

Gene: BartholomewSD_29 Start: 22860, Stop: 23069, Start Num: 14

Candidate Starts for BartholomewSD_29:

(Start: 14 @22860 has 29 MA's), (15, 22878), (Start: 17 @22899 has 1 MA's), (18, 22947), (21, 22971), (24, 23019),

Gene: Bowden_28 Start: 22785, Stop: 22994, Start Num: 14

Candidate Starts for Bowden_28:

(Start: 14 @22785 has 29 MA's), (15, 22803), (Start: 17 @22824 has 1 MA's), (21, 22896), (24, 22944),

Gene: Caelum_28 Start: 22499, Stop: 22711, Start Num: 14

Candidate Starts for Caelum_28:

(2, 21806), (3, 21824), (Start: 14 @22499 has 29 MA's), (15, 22517), (20, 22604),

Gene: Diane_27 Start: 22864, Stop: 23076, Start Num: 14

Candidate Starts for Diane_27:

(5, 22369), (9, 22489), (Start: 14 @22864 has 29 MA's), (15, 22882), (20, 22969),

Gene: ELB20_26 Start: 22980, Stop: 23153, Start Num: 17

Candidate Starts for ELB20_26:

(Start: 14 @22941 has 29 MA's), (15, 22959), (Start: 17 @22980 has 1 MA's), (19, 23040), (20, 23046),

Gene: GirlDinner_27 Start: 22520, Stop: 22726, Start Num: 14

Candidate Starts for GirlDinner_27:

(Start: 14 @22520 has 29 MA's), (15, 22538), (20, 22625),

Gene: Haizum_27 Start: 22538, Stop: 22750, Start Num: 14

Candidate Starts for Haizum_27:

(Start: 14 @22538 has 29 MA's), (15, 22556), (20, 22643),

Gene: Hank144_28 Start: 22954, Stop: 23166, Start Num: 14

Candidate Starts for Hank144_28:

(11, 22891), (Start: 14 @22954 has 29 MA's), (15, 22972), (20, 23059), (22, 23071),

Gene: Issmi_28 Start: 23141, Stop: 23353, Start Num: 14

Candidate Starts for Issmi_28:

(Start: 14 @23141 has 29 MA's), (15, 23162), (20, 23249), (21, 23255),

Gene: Janus_28 Start: 22858, Stop: 23064, Start Num: 14

Candidate Starts for Janus_28:

(Start: 14 @22858 has 29 MA's), (15, 22876), (20, 22963),

Gene: Jevington_29 Start: 23193, Stop: 23402, Start Num: 14

Candidate Starts for Jevington_29:

(Start: 14 @23193 has 29 MA's), (15, 23211), (20, 23298),

Gene: Loofah_28 Start: 22838, Stop: 23050, Start Num: 14

Candidate Starts for Loofah_28:

(1, 22157), (4, 22241), (Start: 14 @22838 has 29 MA's), (15, 22856), (Start: 17 @22877 has 1 MA's), (20, 22943),

Gene: Marav_30 Start: 23529, Stop: 23738, Start Num: 14

Candidate Starts for Marav_30:

(Start: 14 @23529 has 29 MA's), (15, 23547), (20, 23634),

Gene: Nishikigoi_27 Start: 22538, Stop: 22750, Start Num: 14

Candidate Starts for Nishikigoi_27:

(Start: 14 @22538 has 29 MA's), (15, 22556), (20, 22643),

Gene: Omar_28 Start: 22805, Stop: 23014, Start Num: 14

Candidate Starts for Omar_28:

(7, 22373), (Start: 14 @22805 has 29 MA's), (15, 22823), (16, 22838), (20, 22910),

Gene: Pablito_27 Start: 22406, Stop: 22624, Start Num: 13

Candidate Starts for Pablito_27:

(10, 22301), (12, 22403), (Start: 13 @22406 has 1 MA's), (Start: 14 @22412 has 29 MA's), (15, 22430), (20, 22517), (22, 22529),

Gene: Paedore_27 Start: 22838, Stop: 23050, Start Num: 14

Candidate Starts for Paedore_27:

(Start: 14 @22838 has 29 MA's), (15, 22856), (Start: 17 @22877 has 1 MA's), (20, 22943),

Gene: Paolo_29 Start: 23192, Stop: 23401, Start Num: 14

Candidate Starts for Paolo_29:

(Start: 14 @23192 has 29 MA's), (15, 23210),

Gene: Puginator_29 Start: 23207, Stop: 23416, Start Num: 14

Candidate Starts for Puginator_29:

(Start: 14 @23207 has 29 MA's), (15, 23225), (20, 23312),

Gene: R4_27 Start: 22952, Stop: 23164, Start Num: 14

Candidate Starts for R4_27:

(Start: 14 @22952 has 29 MA's), (15, 22970), (Start: 17 @22991 has 1 MA's), (19, 23051), (20, 23057),

Gene: SqueakyClean_28 Start: 22784, Stop: 22990, Start Num: 14

Candidate Starts for SqueakyClean_28:

(Start: 14 @22784 has 29 MA's), (15, 22802), (20, 22889),

Gene: Superstar_30 Start: 23733, Stop: 23945, Start Num: 14

Candidate Starts for Superstar_30:

(6, 23250), (8, 23310), (Start: 14 @23733 has 29 MA's), (15, 23751), (20, 23838),

Gene: Tefunt_27 Start: 22541, Stop: 22753, Start Num: 14

Candidate Starts for Tefunt_27:

(Start: 14 @22541 has 29 MA's), (15, 22559), (20, 22646),

Gene: Thestral_28 Start: 22774, Stop: 22983, Start Num: 14

Candidate Starts for Thestral_28:

(Start: 14 @22774 has 29 MA's), (15, 22792), (21, 22885), (22, 22891), (23, 22924), (24, 22933),

Gene: TinaBelcher_27 Start: 22721, Stop: 22930, Start Num: 14

Candidate Starts for TinaBelcher_27:

(Start: 14 @22721 has 29 MA's), (15, 22739), (21, 22832), (22, 22838), (23, 22871), (24, 22880),

Gene: Triumph_29 Start: 22699, Stop: 22902, Start Num: 14

Candidate Starts for Triumph_29:

(Start: 14 @22699 has 29 MA's), (15, 22717), (20, 22804),

Gene: TrvxScott_26 Start: 22767, Stop: 22976, Start Num: 14

Candidate Starts for TrvxScott_26:

(Start: 14 @22767 has 29 MA's), (15, 22785), (Start: 17 @22806 has 1 MA's), (21, 22878), (24, 22926),

Gene: Zainub_29 Start: 23156, Stop: 23365, Start Num: 14

Candidate Starts for Zainub_29:

(Start: 14 @23156 has 29 MA's), (15, 23174),