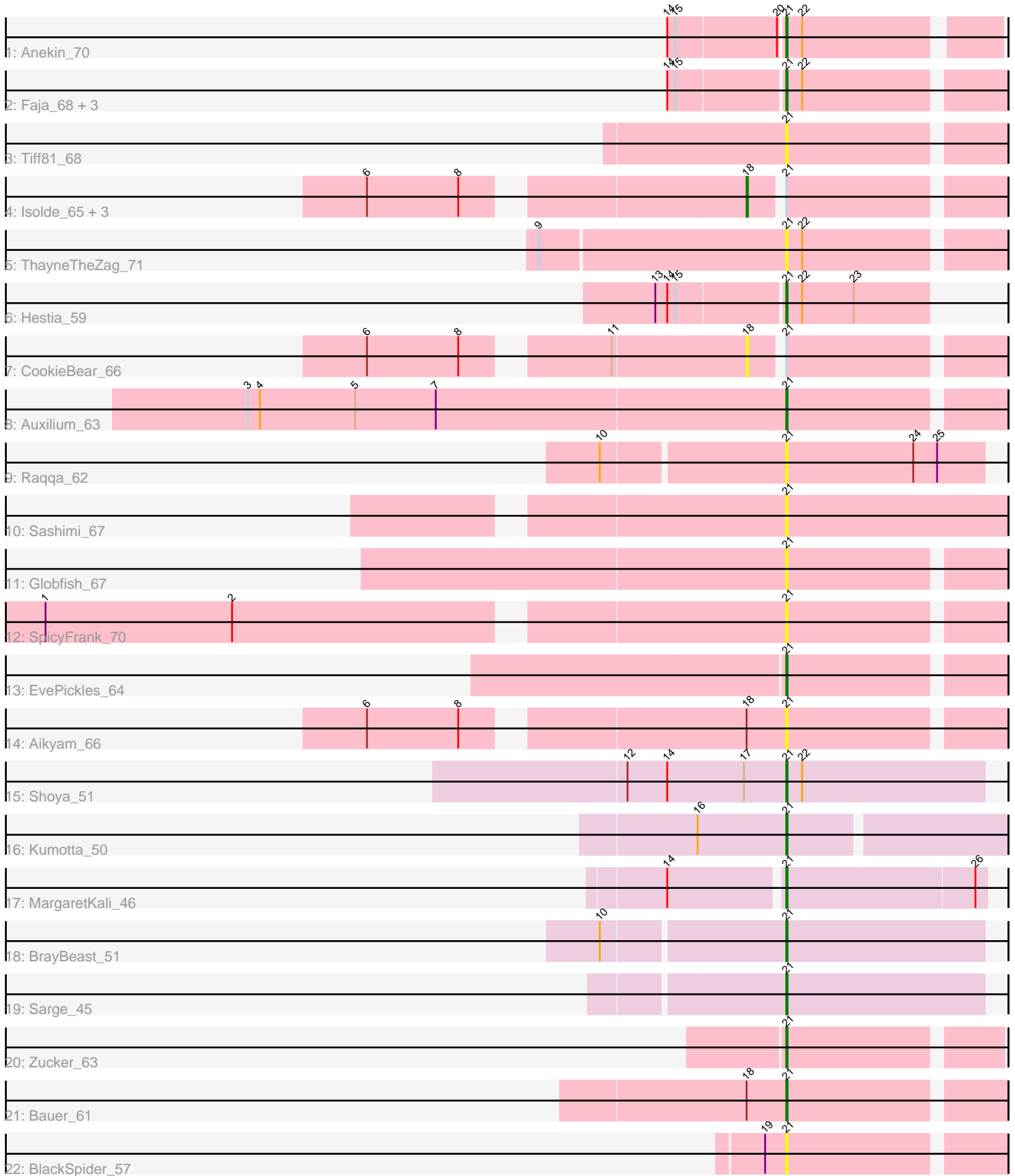


Pham 194258



Note: Tracks are now grouped by subcluster and scaled. Switching in subcluster is indicated by changes in track color. Track scale is now set by default to display the region 30 bp upstream of start 1 to 30 bp downstream of the last possible start. If this default region is judged to be packed too tightly with annotated starts, the track will be further scaled to only show that region of the ORF with annotated starts. This action will be indicated by adding "Zoomed" to the title. For starts, yellow indicates the location of called starts comprised solely of Glimmer/GeneMark auto-annotations, green indicates the location of called starts with at least 1 manual gene annotation.

## Pham 194258 Report

This analysis was run 11/02/24 on database version 579.

Pham number 194258 has 28 members, 10 are drafts.

Phages represented in each track:

- Track 1 : Anekin\_70
- Track 2 : Faja\_68, Phrank15\_69, Raphaella\_67, BenchScraper\_67
- Track 3 : Tiff81\_68
- Track 4 : Isolde\_65, Gorpy\_66, YoungHarleezy\_66, Sakai\_65
- Track 5 : ThayneTheZag\_71
- Track 6 : Hestia\_59
- Track 7 : CookieBear\_66
- Track 8 : Auxilium\_63
- Track 9 : Raqqa\_62
- Track 10 : Sashimi\_67
- Track 11 : Globfish\_67
- Track 12 : SpicyFrank\_70
- Track 13 : EvePickles\_64
- Track 14 : Aikyam\_66
- Track 15 : Shoya\_51
- Track 16 : Kumotta\_50
- Track 17 : MargaretKali\_46
- Track 18 : BrayBeast\_51
- Track 19 : Sarge\_45
- Track 20 : Zucker\_63
- Track 21 : Bauer\_61
- Track 22 : BlackSpider\_57

### ***Summary of Final Annotations (See graph section above for start numbers):***

The start number called the most often in the published annotations is 21, it was called in 15 of the 18 non-draft genes in the pham.

Genes that call this "Most Annotated" start:

• Aikyam\_66, Anekin\_70, Auxilium\_63, Bauer\_61, BenchScraper\_67, BlackSpider\_57, BrayBeast\_51, EvePickles\_64, Faja\_68, Globfish\_67, Hestia\_59, Kumotta\_50, MargaretKali\_46, Phrank15\_69, Raphaella\_67, Raqqa\_62, Sarge\_45, Sashimi\_67, Shoya\_51, SpicyFrank\_70, ThayneTheZag\_71, Tiff81\_68, Zucker\_63,

Genes that have the "Most Annotated" start but do not call it:

- CookieBear\_66, Gorpy\_66, Isolde\_65, Sakai\_65, YoungHarleezy\_66,

Genes that do not have the "Most Annotated" start:

- 

### Summary by start number:

Start 18:

- Found in 7 of 28 ( 25.0% ) of genes in pham
- Manual Annotations of this start: 3 of 18
- Called 71.4% of time when present
- Phage (with cluster) where this start called: CookieBear\_66 (AY), Gorpy\_66 (AY), Isolde\_65 (AY), Sakai\_65 (AY), YoungHarleezy\_66 (AY),

Start 21:

- Found in 28 of 28 ( 100.0% ) of genes in pham
- Manual Annotations of this start: 15 of 18
- Called 82.1% of time when present
- Phage (with cluster) where this start called: Aikyam\_66 (AY), Anekin\_70 (AY), Auxilium\_63 (AY), Bauer\_61 (FN), BenchScraper\_67 (AY), BlackSpider\_57 (FN), BrayBeast\_51 (FB), EvePickles\_64 (AY), Faja\_68 (AY), Globfish\_67 (AY), Hestia\_59 (AY), Kumotta\_50 (FB), MargaretKali\_46 (FB), Phrank15\_69 (AY), Raphaella\_67 (AY), Raqqa\_62 (AY), Sarge\_45 (FB), Sashimi\_67 (AY), Shoya\_51 (FB), SpicyFrank\_70 (AY), ThayneTheZag\_71 (AY), Tiff81\_68 (AY), Zucker\_63 (FN),

### Summary by clusters:

There are 3 clusters represented in this pham: AY, FB, FN,

Info for manual annotations of cluster AY:

- Start number 18 was manually annotated 3 times for cluster AY.
- Start number 21 was manually annotated 8 times for cluster AY.

Info for manual annotations of cluster FB:

- Start number 21 was manually annotated 5 times for cluster FB.

Info for manual annotations of cluster FN:

- Start number 21 was manually annotated 2 times for cluster FN.

### Gene Information:

Gene: Aikyam\_66 Start: 33983, Stop: 34138, Start Num: 21

Candidate Starts for Aikyam\_66:

(6, 33704), (8, 33773), (Start: 18 @33962 has 3 MA's), (Start: 21 @33983 has 15 MA's),

Gene: Anekin\_70 Start: 36609, Stop: 36758, Start Num: 21

Candidate Starts for Anekin\_70:

(14, 36525), (15, 36531), (20, 36606), (Start: 21 @36609 has 15 MA's), (22, 36621),

Gene: Auxilium\_63 Start: 33144, Stop: 33299, Start Num: 21

Candidate Starts for Auxilium\_63:

(3, 32751), (4, 32760), (5, 32832), (7, 32892), (Start: 21 @33144 has 15 MA's),

Gene: Bauer\_61 Start: 34076, Stop: 34231, Start Num: 21

Candidate Starts for Bauer\_61:

(Start: 18 @34055 has 3 MA's), (Start: 21 @34076 has 15 MA's),

Gene: BenchScraper\_67 Start: 35352, Stop: 35516, Start Num: 21

Candidate Starts for BenchScraper\_67:

(14, 35268), (15, 35274), (Start: 21 @35352 has 15 MA's), (22, 35364),

Gene: BlackSpider\_57 Start: 32936, Stop: 33091, Start Num: 21

Candidate Starts for BlackSpider\_57:

(19, 32927), (Start: 21 @32936 has 15 MA's),

Gene: BrayBeast\_51 Start: 29661, Stop: 29810, Start Num: 21

Candidate Starts for BrayBeast\_51:

(10, 29538), (Start: 21 @29661 has 15 MA's),

Gene: CookieBear\_66 Start: 35393, Stop: 35569, Start Num: 18

Candidate Starts for CookieBear\_66:

(6, 35135), (8, 35204), (11, 35294), (Start: 18 @35393 has 3 MA's), (Start: 21 @35414 has 15 MA's),

Gene: EvePickles\_64 Start: 36114, Stop: 36269, Start Num: 21

Candidate Starts for EvePickles\_64:

(Start: 21 @36114 has 15 MA's),

Gene: Faja\_68 Start: 36966, Stop: 37121, Start Num: 21

Candidate Starts for Faja\_68:

(14, 36882), (15, 36888), (Start: 21 @36966 has 15 MA's), (22, 36978),

Gene: Globfish\_67 Start: 36057, Stop: 36212, Start Num: 21

Candidate Starts for Globfish\_67:

(Start: 21 @36057 has 15 MA's),

Gene: Gorpy\_66 Start: 36385, Stop: 36561, Start Num: 18

Candidate Starts for Gorpy\_66:

(6, 36127), (8, 36196), (Start: 18 @36385 has 3 MA's), (Start: 21 @36406 has 15 MA's),

Gene: Hestia\_59 Start: 33177, Stop: 33284, Start Num: 21

Candidate Starts for Hestia\_59:

(13, 33084), (14, 33093), (15, 33099), (Start: 21 @33177 has 15 MA's), (22, 33189), (23, 33228),

Gene: Isolde\_65 Start: 35062, Stop: 35238, Start Num: 18

Candidate Starts for Isolde\_65:

(6, 34804), (8, 34873), (Start: 18 @35062 has 3 MA's), (Start: 21 @35083 has 15 MA's),

Gene: Kumotta\_50 Start: 30103, Stop: 30261, Start Num: 21

Candidate Starts for Kumotta\_50:

(16, 30037), (Start: 21 @30103 has 15 MA's),

Gene: MargaretKali\_46 Start: 28714, Stop: 28863, Start Num: 21

Candidate Starts for MargaretKali\_46:

(14, 28633), (Start: 21 @28714 has 15 MA's), (26, 28855),

Gene: Phrank15\_69 Start: 35883, Stop: 36047, Start Num: 21

Candidate Starts for Phrank15\_69:

(14, 35799), (15, 35805), (Start: 21 @35883 has 15 MA's), (22, 35895),

Gene: Raphaella\_67 Start: 35450, Stop: 35614, Start Num: 21

Candidate Starts for Raphaella\_67:

(14, 35366), (15, 35372), (Start: 21 @35450 has 15 MA's), (22, 35462),

Gene: Raqqa\_62 Start: 33690, Stop: 33839, Start Num: 21

Candidate Starts for Raqqa\_62:

(10, 33567), (Start: 21 @33690 has 15 MA's), (24, 33786), (25, 33804),

Gene: Sakai\_65 Start: 35096, Stop: 35272, Start Num: 18

Candidate Starts for Sakai\_65:

(6, 34838), (8, 34907), (Start: 18 @35096 has 3 MA's), (Start: 21 @35117 has 15 MA's),

Gene: Sarge\_45 Start: 27408, Stop: 27557, Start Num: 21

Candidate Starts for Sarge\_45:

(Start: 21 @27408 has 15 MA's),

Gene: Sashimi\_67 Start: 36369, Stop: 36536, Start Num: 21

Candidate Starts for Sashimi\_67:

(Start: 21 @36369 has 15 MA's),

Gene: Shoya\_51 Start: 29581, Stop: 29730, Start Num: 21

Candidate Starts for Shoya\_51:

(12, 29470), (14, 29500), (17, 29557), (Start: 21 @29581 has 15 MA's), (22, 29593),

Gene: SpicyFrank\_70 Start: 36679, Stop: 36834, Start Num: 21

Candidate Starts for SpicyFrank\_70:

(1, 36157), (2, 36298), (Start: 21 @36679 has 15 MA's),

Gene: ThayneTheZag\_71 Start: 35896, Stop: 36051, Start Num: 21

Candidate Starts for ThayneTheZag\_71:

(9, 35722), (Start: 21 @35896 has 15 MA's), (22, 35908),

Gene: Tiff81\_68 Start: 34064, Stop: 34219, Start Num: 21

Candidate Starts for Tiff81\_68:

(Start: 21 @34064 has 15 MA's),

Gene: YoungHarleezy\_66 Start: 35791, Stop: 35967, Start Num: 18

Candidate Starts for YoungHarleezy\_66:

(6, 35533), (8, 35602), (Start: 18 @35791 has 3 MA's), (Start: 21 @35812 has 15 MA's),

Gene: Zucker\_63 Start: 36020, Stop: 36172, Start Num: 21

Candidate Starts for Zucker\_63:

(Start: 21 @36020 has 15 MA's),