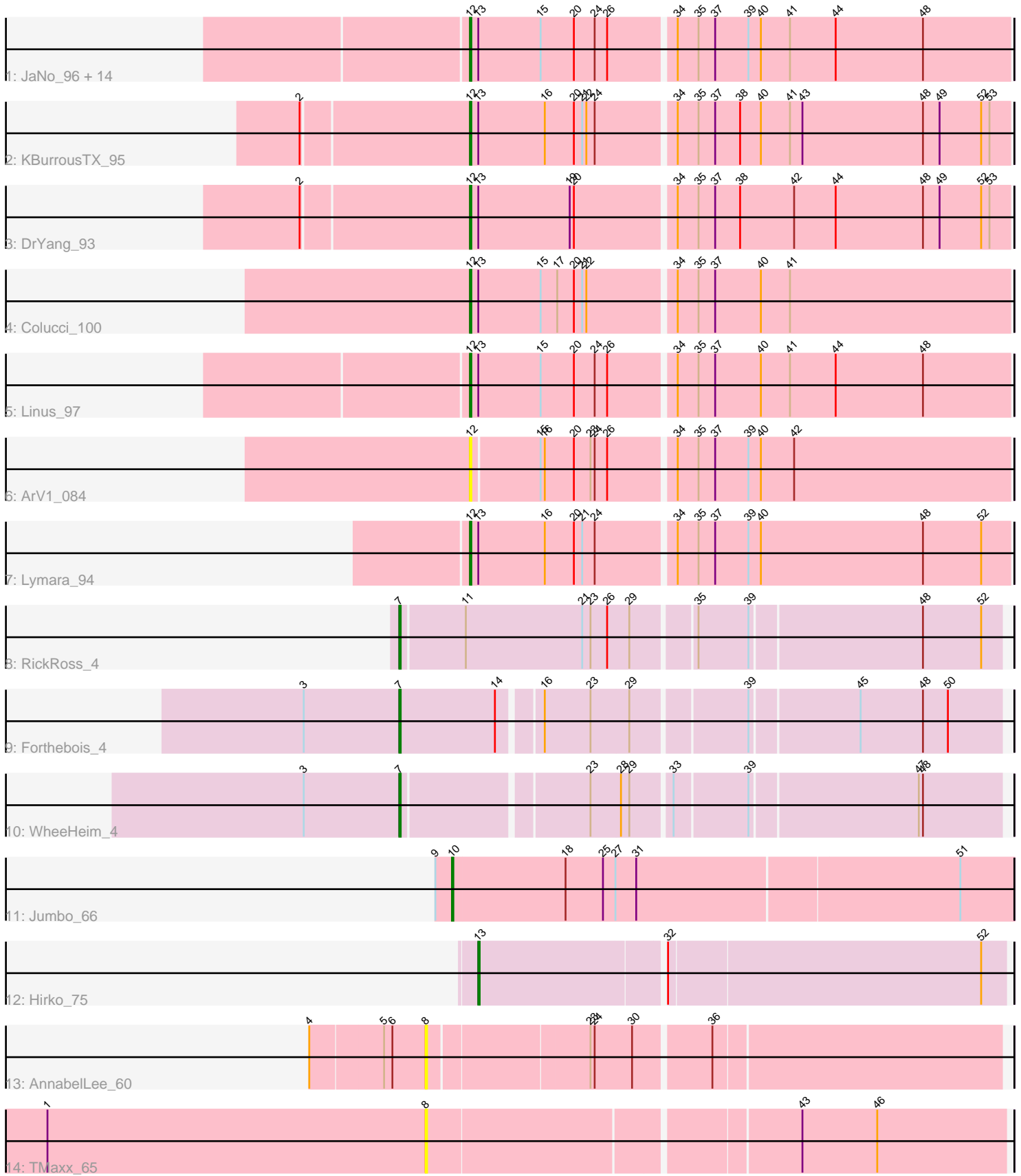


# Pham 194263



Note: Tracks are now grouped by subcluster and scaled. Switching in subcluster is indicated by changes in track color. Track scale is now set by default to display the region 30 bp upstream of start 1 to 30 bp downstream of the last possible start. If this default region is judged to be packed too tightly with annotated starts, the track will be further scaled to only show that region of the ORF with annotated starts. This action will be indicated by adding "Zoomed" to the title. For starts, yellow indicates the location of called starts comprised solely of Glimmer/GeneMark auto-annotations, green indicates the location of called starts with at least 1 manual gene annotation.

## Pham 194263 Report

This analysis was run 11/02/24 on database version 579.

Pham number 194263 has 28 members, 4 are drafts.

Phages represented in each track:

- Track 1 : JaNo\_96, Mordred\_97, HumptyDumpty\_97, JayCookie\_97, Chubster\_97, PrincessTrina\_98, EdgarPoe\_96, Conboy\_95, Scavito\_98, Chocolat\_97, Kabreeze\_97, MoyaNatalis\_96, Tophat\_98, RosiePosie\_97, Chipper1996\_980
- Track 2 : KBurrousTX\_95
- Track 3 : DrYang\_93
- Track 4 : Colucci\_100
- Track 5 : Linus\_97
- Track 6 : ArV1\_084
- Track 7 : Lymara\_94
- Track 8 : RickRoss\_4
- Track 9 : Forthebois\_4
- Track 10 : WheeHeim\_4
- Track 11 : Jumbo\_66
- Track 12 : Hirko\_75
- Track 13 : AnnabelLee\_60
- Track 14 : TMaxx\_65

### ***Summary of Final Annotations (See graph section above for start numbers):***

The start number called the most often in the published annotations is 12, it was called in 19 of the 24 non-draft genes in the pham.

Genes that call this "Most Annotated" start:

- ArV1\_084, Chipper1996\_980, Chocolat\_97, Chubster\_97, Colucci\_100, Conboy\_95, DrYang\_93, EdgarPoe\_96, HumptyDumpty\_97, JaNo\_96, JayCookie\_97, KBurrousTX\_95, Kabreeze\_97, Linus\_97, Lymara\_94, Mordred\_97, MoyaNatalis\_96, PrincessTrina\_98, RosiePosie\_97, Scavito\_98, Tophat\_98,

Genes that have the "Most Annotated" start but do not call it:

- 

Genes that do not have the "Most Annotated" start:

- AnnabelLee\_60, Forthebois\_4, Hirko\_75, Jumbo\_66, RickRoss\_4, TMaxx\_65, WheeHeim\_4,

## Summary by start number:

### Start 7:

- Found in 3 of 28 ( 10.7% ) of genes in pham
- Manual Annotations of this start: 3 of 24
- Called 100.0% of time when present
- Phage (with cluster) where this start called: Forthebois\_4 (BO), RickRoss\_4 (BO), WheeHeim\_4 (BO),

### Start 8:

- Found in 2 of 28 ( 7.1% ) of genes in pham
- No Manual Annotations of this start.
- Called 100.0% of time when present
- Phage (with cluster) where this start called: AnnabelLee\_60 (FR), TMaxx\_65 (FR),

### Start 10:

- Found in 1 of 28 ( 3.6% ) of genes in pham
- Manual Annotations of this start: 1 of 24
- Called 100.0% of time when present
- Phage (with cluster) where this start called: Jumbo\_66 (DF3),

### Start 12:

- Found in 21 of 28 ( 75.0% ) of genes in pham
- Manual Annotations of this start: 19 of 24
- Called 100.0% of time when present
- Phage (with cluster) where this start called: ArV1\_084 (AR), Chipper1996\_980 (AR), Chocolat\_97 (AR), Chubster\_97 (AR), Colucci\_100 (AR), Conboy\_95 (AR), DrYang\_93 (AR), EdgarPoe\_96 (AR), HumptyDumpty\_97 (AR), JaNo\_96 (AR), JayCookie\_97 (AR), KBurrousTX\_95 (AR), Kabreeze\_97 (AR), Linus\_97 (AR), Lymara\_94 (AR), Mordred\_97 (AR), MoyaNatalis\_96 (AR), PrincessTrina\_98 (AR), RosiePosie\_97 (AR), Scavito\_98 (AR), Tophat\_98 (AR),

### Start 13:

- Found in 21 of 28 ( 75.0% ) of genes in pham
- Manual Annotations of this start: 1 of 24
- Called 4.8% of time when present
- Phage (with cluster) where this start called: Hirko\_75 (FL),

## Summary by clusters:

There are 5 clusters represented in this pham: BO, FR, AR, FL, DF3,

Info for manual annotations of cluster AR:

- Start number 12 was manually annotated 19 times for cluster AR.

Info for manual annotations of cluster BO:

- Start number 7 was manually annotated 3 times for cluster BO.

Info for manual annotations of cluster DF3:

- Start number 10 was manually annotated 1 time for cluster DF3.

Info for manual annotations of cluster FL:

- Start number 13 was manually annotated 1 time for cluster FL.

### **Gene Information:**

Gene: AnnabelLee\_60 Start: 35926, Stop: 35531, Start Num: 8

Candidate Starts for AnnabelLee\_60:

(4, 36007), (5, 35956), (6, 35950), (8, 35926), (23, 35815), (24, 35812), (30, 35785), (36, 35734),

Gene: ArV1\_084 Start: 61126, Stop: 61506, Start Num: 12

Candidate Starts for ArV1\_084:

(Start: 12 @61126 has 19 MA's), (15, 61174), (16, 61177), (20, 61198), (23, 61210), (24, 61213), (26, 61222), (34, 61267), (35, 61282), (37, 61294), (39, 61318), (40, 61327), (42, 61351),

Gene: Chipper1996\_980 Start: 62828, Stop: 63211, Start Num: 12

Candidate Starts for Chipper1996\_980:

(Start: 12 @62828 has 19 MA's), (Start: 13 @62834 has 1 MA's), (15, 62879), (20, 62903), (24, 62918), (26, 62927), (34, 62972), (35, 62987), (37, 62999), (39, 63023), (40, 63032), (41, 63053), (44, 63086), (48, 63149),

Gene: Chocolat\_97 Start: 62535, Stop: 62918, Start Num: 12

Candidate Starts for Chocolat\_97:

(Start: 12 @62535 has 19 MA's), (Start: 13 @62541 has 1 MA's), (15, 62586), (20, 62610), (24, 62625), (26, 62634), (34, 62679), (35, 62694), (37, 62706), (39, 62730), (40, 62739), (41, 62760), (44, 62793), (48, 62856),

Gene: Chubster\_97 Start: 62775, Stop: 63158, Start Num: 12

Candidate Starts for Chubster\_97:

(Start: 12 @62775 has 19 MA's), (Start: 13 @62781 has 1 MA's), (15, 62826), (20, 62850), (24, 62865), (26, 62874), (34, 62919), (35, 62934), (37, 62946), (39, 62970), (40, 62979), (41, 63000), (44, 63033), (48, 63096),

Gene: Colucci\_100 Start: 63169, Stop: 63552, Start Num: 12

Candidate Starts for Colucci\_100:

(Start: 12 @63169 has 19 MA's), (Start: 13 @63175 has 1 MA's), (15, 63220), (17, 63232), (20, 63244), (21, 63250), (22, 63253), (34, 63313), (35, 63328), (37, 63340), (40, 63373), (41, 63394),

Gene: Conboy\_95 Start: 62284, Stop: 62667, Start Num: 12

Candidate Starts for Conboy\_95:

(Start: 12 @62284 has 19 MA's), (Start: 13 @62290 has 1 MA's), (15, 62335), (20, 62359), (24, 62374), (26, 62383), (34, 62428), (35, 62443), (37, 62455), (39, 62479), (40, 62488), (41, 62509), (44, 62542), (48, 62605),

Gene: DrYang\_93 Start: 62321, Stop: 62704, Start Num: 12

Candidate Starts for DrYang\_93:

(2, 62204), (Start: 12 @62321 has 19 MA's), (Start: 13 @62327 has 1 MA's), (19, 62393), (20, 62396), (34, 62465), (35, 62480), (37, 62492), (38, 62510), (42, 62549), (44, 62579), (48, 62642), (49, 62654), (52, 62684), (53, 62690),

Gene: EdgarPoe\_96 Start: 62692, Stop: 63075, Start Num: 12

Candidate Starts for EdgarPoe\_96:

(Start: 12 @62692 has 19 MA's), (Start: 13 @62698 has 1 MA's), (15, 62743), (20, 62767), (24, 62782), (26, 62791), (34, 62836), (35, 62851), (37, 62863), (39, 62887), (40, 62896), (41, 62917), (44, 62950), (48, 63013),

Gene: Forthebois\_4 Start: 1381, Stop: 971, Start Num: 7

Candidate Starts for Forthebois\_4:

(3, 1450), (Start: 7 @1381 has 3 MA's), (14, 1312), (16, 1285), (23, 1252), (29, 1225), (39, 1147), (45, 1072), (48, 1027), (50, 1009),

Gene: Hirko\_75 Start: 46796, Stop: 47161, Start Num: 13

Candidate Starts for Hirko\_75:

(Start: 13 @46796 has 1 MA's), (32, 46922), (52, 47144),

Gene: HumptyDumpty\_97 Start: 62495, Stop: 62878, Start Num: 12

Candidate Starts for HumptyDumpty\_97:

(Start: 12 @62495 has 19 MA's), (Start: 13 @62501 has 1 MA's), (15, 62546), (20, 62570), (24, 62585), (26, 62594), (34, 62639), (35, 62654), (37, 62666), (39, 62690), (40, 62699), (41, 62720), (44, 62753), (48, 62816),

Gene: JaNo\_96 Start: 62466, Stop: 62849, Start Num: 12

Candidate Starts for JaNo\_96:

(Start: 12 @62466 has 19 MA's), (Start: 13 @62472 has 1 MA's), (15, 62517), (20, 62541), (24, 62556), (26, 62565), (34, 62610), (35, 62625), (37, 62637), (39, 62661), (40, 62670), (41, 62691), (44, 62724), (48, 62787),

Gene: JayCookie\_97 Start: 63028, Stop: 63411, Start Num: 12

Candidate Starts for JayCookie\_97:

(Start: 12 @63028 has 19 MA's), (Start: 13 @63034 has 1 MA's), (15, 63079), (20, 63103), (24, 63118), (26, 63127), (34, 63172), (35, 63187), (37, 63199), (39, 63223), (40, 63232), (41, 63253), (44, 63286), (48, 63349),

Gene: Jumbo\_66 Start: 57675, Stop: 57277, Start Num: 10

Candidate Starts for Jumbo\_66:

(9, 57687), (Start: 10 @57675 has 1 MA's), (18, 57594), (25, 57567), (27, 57558), (31, 57543), (51, 57315),

Gene: KBurrousTX\_95 Start: 63905, Stop: 64288, Start Num: 12

Candidate Starts for KBurrousTX\_95:

(2, 63788), (Start: 12 @63905 has 19 MA's), (Start: 13 @63911 has 1 MA's), (16, 63959), (20, 63980), (21, 63986), (22, 63989), (24, 63995), (34, 64049), (35, 64064), (37, 64076), (38, 64094), (40, 64109), (41, 64130), (43, 64139), (48, 64226), (49, 64238), (52, 64268), (53, 64274),

Gene: Kabreeze\_97 Start: 62552, Stop: 62935, Start Num: 12

Candidate Starts for Kabreeze\_97:

(Start: 12 @62552 has 19 MA's), (Start: 13 @62558 has 1 MA's), (15, 62603), (20, 62627), (24, 62642), (26, 62651), (34, 62696), (35, 62711), (37, 62723), (39, 62747), (40, 62756), (41, 62777), (44, 62810), (48, 62873),

Gene: Linus\_97 Start: 63000, Stop: 63383, Start Num: 12

Candidate Starts for Linus\_97:

(Start: 12 @63000 has 19 MA's), (Start: 13 @63006 has 1 MA's), (15, 63051), (20, 63075), (24, 63090), (26, 63099), (34, 63144), (35, 63159), (37, 63171), (40, 63204), (41, 63225), (44, 63258), (48, 63321),

Gene: Lymara\_94 Start: 61459, Stop: 61842, Start Num: 12

Candidate Starts for Lymara\_94:

(Start: 12 @61459 has 19 MA's), (Start: 13 @61465 has 1 MA's), (16, 61513), (20, 61534), (21, 61540), (24, 61549), (34, 61603), (35, 61618), (37, 61630), (39, 61654), (40, 61663), (48, 61780), (52, 61822),

Gene: Mordred\_97 Start: 62591, Stop: 62974, Start Num: 12

Candidate Starts for Mordred\_97:

(Start: 12 @62591 has 19 MA's), (Start: 13 @62597 has 1 MA's), (15, 62642), (20, 62666), (24, 62681), (26, 62690), (34, 62735), (35, 62750), (37, 62762), (39, 62786), (40, 62795), (41, 62816), (44, 62849), (48, 62912),

Gene: MoyaNatalis\_96 Start: 62474, Stop: 62857, Start Num: 12

Candidate Starts for MoyaNatalis\_96:

(Start: 12 @62474 has 19 MA's), (Start: 13 @62480 has 1 MA's), (15, 62525), (20, 62549), (24, 62564), (26, 62573), (34, 62618), (35, 62633), (37, 62645), (39, 62669), (40, 62678), (41, 62699), (44, 62732), (48, 62795),

Gene: PrincessTrina\_98 Start: 62782, Stop: 63165, Start Num: 12

Candidate Starts for PrincessTrina\_98:

(Start: 12 @62782 has 19 MA's), (Start: 13 @62788 has 1 MA's), (15, 62833), (20, 62857), (24, 62872), (26, 62881), (34, 62926), (35, 62941), (37, 62953), (39, 62977), (40, 62986), (41, 63007), (44, 63040), (48, 63103),

Gene: RickRoss\_4 Start: 1342, Stop: 926, Start Num: 7

Candidate Starts for RickRoss\_4:

(Start: 7 @1342 has 3 MA's), (11, 1297), (21, 1213), (23, 1207), (26, 1195), (29, 1180), (35, 1138), (39, 1102), (48, 982), (52, 940),

Gene: RosiePosie\_97 Start: 62647, Stop: 63030, Start Num: 12

Candidate Starts for RosiePosie\_97:

(Start: 12 @62647 has 19 MA's), (Start: 13 @62653 has 1 MA's), (15, 62698), (20, 62722), (24, 62737), (26, 62746), (34, 62791), (35, 62806), (37, 62818), (39, 62842), (40, 62851), (41, 62872), (44, 62905), (48, 62968),

Gene: Scavito\_98 Start: 62640, Stop: 63023, Start Num: 12

Candidate Starts for Scavito\_98:

(Start: 12 @62640 has 19 MA's), (Start: 13 @62646 has 1 MA's), (15, 62691), (20, 62715), (24, 62730), (26, 62739), (34, 62784), (35, 62799), (37, 62811), (39, 62835), (40, 62844), (41, 62865), (44, 62898), (48, 62961),

Gene: TMaxx\_65 Start: 37726, Stop: 37325, Start Num: 8

Candidate Starts for TMaxx\_65:

(1, 37999), (8, 37726), (43, 37471), (46, 37417),

Gene: Tophat\_98 Start: 62829, Stop: 63212, Start Num: 12

Candidate Starts for Tophat\_98:

(Start: 12 @62829 has 19 MA's), (Start: 13 @62835 has 1 MA's), (15, 62880), (20, 62904), (24, 62919), (26, 62928), (34, 62973), (35, 62988), (37, 63000), (39, 63024), (40, 63033), (41, 63054), (44, 63087), (48, 63150),

Gene: WheeHeim\_4 Start: 1388, Stop: 981, Start Num: 7

Candidate Starts for WheeHeim\_4:

(3, 1457), (Start: 7 @1388 has 3 MA's), (23, 1262), (28, 1241), (29, 1235), (33, 1208), (39, 1157), (47, 1040), (48, 1037),