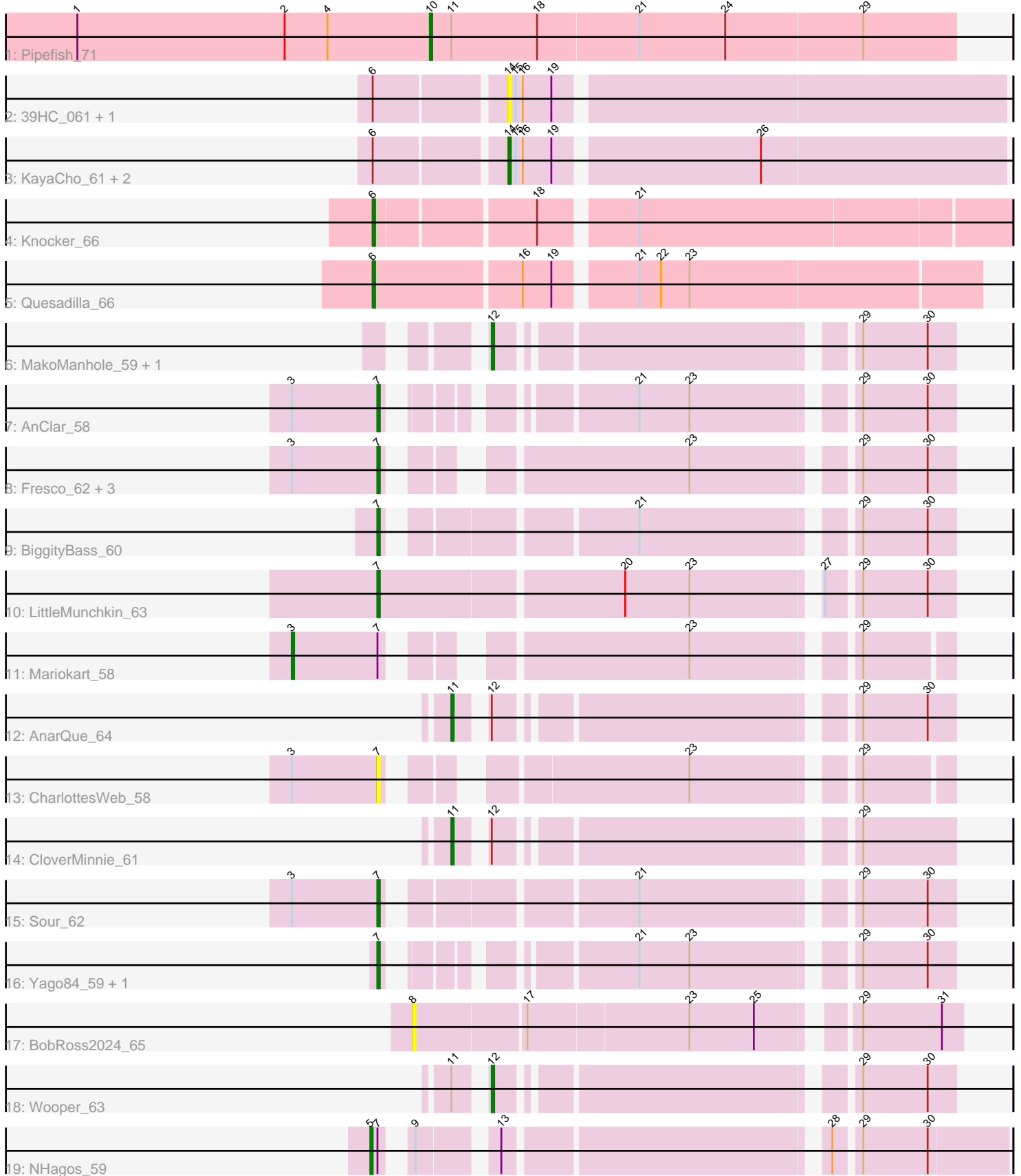


Pham 194271



Note: Tracks are now grouped by subcluster and scaled. Switching in subcluster is indicated by changes in track color. Track scale is now set by default to display the region 30 bp upstream of start 1 to 30 bp downstream of the last possible start. If this default region is judged to be packed too tightly with annotated starts, the track will be further scaled to only show that region of the ORF with annotated starts. This action will be indicated by adding "Zoomed" to the title. For starts, yellow indicates the location of called starts comprised solely of Glimmer/GeneMark auto-annotations, green indicates the location of called starts with at least 1 manual gene annotation.

Pham 194271 Report

This analysis was run 11/02/24 on database version 579.

Pham number 194271 has 27 members, 6 are drafts.

Phages represented in each track:

- Track 1 : Pipefish_71
- Track 2 : 39HC_061, 40BC_061
- Track 3 : KayaCho_61, Hosp_059, Jolie1_061
- Track 4 : Knocker_66
- Track 5 : Quesadilla_66
- Track 6 : MakoManhole_59, CaiB_62
- Track 7 : AnClar_58
- Track 8 : Fresco_62, Axumite_62, Shatter_62, Ligma_62
- Track 9 : BiggityBass_60
- Track 10 : LittleMunchkin_63
- Track 11 : Mariokart_58
- Track 12 : AnarQue_64
- Track 13 : CharlottesWeb_58
- Track 14 : CloverMinnie_61
- Track 15 : Sour_62
- Track 16 : Yago84_59, Sisko_60
- Track 17 : BobRoss2024_65
- Track 18 : Wooper_63
- Track 19 : NHagos_59

Summary of Final Annotations (See graph section above for start numbers):

The start number called the most often in the published annotations is 7, it was called in 10 of the 21 non-draft genes in the pham.

Genes that call this "Most Annotated" start:

- AnClar_58, Axumite_62, BiggityBass_60, CharlottesWeb_58, Fresco_62, Ligma_62, LittleMunchkin_63, Shatter_62, Sisko_60, Sour_62, Yago84_59,

Genes that have the "Most Annotated" start but do not call it:

- Mariokart_58, NHagos_59,

Genes that do not have the "Most Annotated" start:

- 39HC_061, 40BC_061, AnarQue_64, BobRoss2024_65, CaiB_62, CloverMinnie_61, Hosp_059, Jolie1_061, KayaCho_61, Knocker_66, MakoManhole_59, Pipefish_71, Quesadilla_66, Wooper_63,

Summary by start number:

Start 3:

- Found in 8 of 27 (29.6%) of genes in pham
- Manual Annotations of this start: 1 of 21
- Called 12.5% of time when present
- Phage (with cluster) where this start called: Mariokart_58 (DR),

Start 5:

- Found in 1 of 27 (3.7%) of genes in pham
- Manual Annotations of this start: 1 of 21
- Called 100.0% of time when present
- Phage (with cluster) where this start called: NHagos_59 (DR),

Start 6:

- Found in 7 of 27 (25.9%) of genes in pham
- Manual Annotations of this start: 2 of 21
- Called 28.6% of time when present
- Phage (with cluster) where this start called: Knocker_66 (B9), Quesadilla_66 (B9),

Start 7:

- Found in 13 of 27 (48.1%) of genes in pham
- Manual Annotations of this start: 10 of 21
- Called 84.6% of time when present
- Phage (with cluster) where this start called: AnClar_58 (DR), Axumite_62 (DR), BiggityBass_60 (DR), CharlottesWeb_58 (DR), Fresco_62 (DR), Ligma_62 (DR), LittleMunchkin_63 (DR), Shatter_62 (DR), Sisko_60 (DR), Sour_62 (DR), Yago84_59 (DR),

Start 8:

- Found in 1 of 27 (3.7%) of genes in pham
- No Manual Annotations of this start.
- Called 100.0% of time when present
- Phage (with cluster) where this start called: BobRoss2024_65 (DR),

Start 10:

- Found in 1 of 27 (3.7%) of genes in pham
- Manual Annotations of this start: 1 of 21
- Called 100.0% of time when present
- Phage (with cluster) where this start called: Pipefish_71 (B3),

Start 11:

- Found in 4 of 27 (14.8%) of genes in pham
- Manual Annotations of this start: 2 of 21
- Called 50.0% of time when present
- Phage (with cluster) where this start called: AnarQue_64 (DR), CloverMinnie_61 (DR),

Start 12:

- Found in 5 of 27 (18.5%) of genes in pham
- Manual Annotations of this start: 3 of 21
- Called 60.0% of time when present
- Phage (with cluster) where this start called: CaiB_62 (DR), MakoManhole_59 (DR), Wooper_63 (DR),

Start 14:

- Found in 5 of 27 (18.5%) of genes in pham
- Manual Annotations of this start: 1 of 21
- Called 100.0% of time when present
- Phage (with cluster) where this start called: 39HC_061 (B6), 40BC_061 (B6), Hosp_059 (B6), Jolie1_061 (B6), KayaCho_61 (B6),

Summary by clusters:

There are 4 clusters represented in this pham: B6, DR, B9, B3,

Info for manual annotations of cluster B3:

- Start number 10 was manually annotated 1 time for cluster B3.

Info for manual annotations of cluster B6:

- Start number 14 was manually annotated 1 time for cluster B6.

Info for manual annotations of cluster B9:

- Start number 6 was manually annotated 2 times for cluster B9.

Info for manual annotations of cluster DR:

- Start number 3 was manually annotated 1 time for cluster DR.
- Start number 5 was manually annotated 1 time for cluster DR.
- Start number 7 was manually annotated 10 times for cluster DR.
- Start number 11 was manually annotated 2 times for cluster DR.
- Start number 12 was manually annotated 3 times for cluster DR.

Gene Information:

Gene: 39HC_061 Start: 56330, Stop: 56530, Start Num: 14

Candidate Starts for 39HC_061:

(Start: 6 @56279 has 2 MA's), (Start: 14 @56330 has 1 MA's), (15, 56333), (16, 56336), (19, 56348),

Gene: 40BC_061 Start: 56330, Stop: 56530, Start Num: 14

Candidate Starts for 40BC_061:

(Start: 6 @56279 has 2 MA's), (Start: 14 @56330 has 1 MA's), (15, 56333), (16, 56336), (19, 56348),

Gene: AnClar_58 Start: 51779, Stop: 51976, Start Num: 7

Candidate Starts for AnClar_58:

(Start: 3 @51743 has 1 MA's), (Start: 7 @51779 has 10 MA's), (21, 51857), (23, 51878), (29, 51938), (30, 51965),

Gene: AnarQue_64 Start: 52219, Stop: 52398, Start Num: 11

Candidate Starts for AnarQue_64:

(Start: 11 @52219 has 2 MA's), (Start: 12 @52228 has 3 MA's), (29, 52360), (30, 52387),

Gene: Axumite_62 Start: 50626, Stop: 50826, Start Num: 7
Candidate Starts for Axumite_62:
(Start: 3 @50590 has 1 MA's), (Start: 7 @50626 has 10 MA's), (23, 50728), (29, 50788), (30, 50815),

Gene: BiggityBass_60 Start: 52323, Stop: 52532, Start Num: 7
Candidate Starts for BiggityBass_60:
(Start: 7 @52323 has 10 MA's), (21, 52413), (29, 52494), (30, 52521),

Gene: BobRoss2024_65 Start: 51837, Stop: 52049, Start Num: 8
Candidate Starts for BobRoss2024_65:
(8, 51837), (17, 51882), (23, 51948), (25, 51975), (29, 52008), (31, 52041),

Gene: CaiB_62 Start: 52012, Stop: 52182, Start Num: 12
Candidate Starts for CaiB_62:
(Start: 12 @52012 has 3 MA's), (29, 52144), (30, 52171),

Gene: CharlottesWeb_58 Start: 49213, Stop: 49410, Start Num: 7
Candidate Starts for CharlottesWeb_58:
(Start: 3 @49177 has 1 MA's), (Start: 7 @49213 has 10 MA's), (23, 49315), (29, 49375),

Gene: CloverMinnie_61 Start: 51166, Stop: 51345, Start Num: 11
Candidate Starts for CloverMinnie_61:
(Start: 11 @51166 has 2 MA's), (Start: 12 @51175 has 3 MA's), (29, 51307),

Gene: Fresco_62 Start: 50626, Stop: 50826, Start Num: 7
Candidate Starts for Fresco_62:
(Start: 3 @50590 has 1 MA's), (Start: 7 @50626 has 10 MA's), (23, 50728), (29, 50788), (30, 50815),

Gene: Hosp_059 Start: 54555, Stop: 54755, Start Num: 14
Candidate Starts for Hosp_059:
(Start: 6 @54504 has 2 MA's), (Start: 14 @54555 has 1 MA's), (15, 54558), (16, 54561), (19, 54573),
(26, 54654),

Gene: Jolie1_061 Start: 56473, Stop: 56673, Start Num: 14
Candidate Starts for Jolie1_061:
(Start: 6 @56422 has 2 MA's), (Start: 14 @56473 has 1 MA's), (15, 56476), (16, 56479), (19, 56491),
(26, 56572),

Gene: KayaCho_61 Start: 56583, Stop: 56783, Start Num: 14
Candidate Starts for KayaCho_61:
(Start: 6 @56532 has 2 MA's), (Start: 14 @56583 has 1 MA's), (15, 56586), (16, 56589), (19, 56601),
(26, 56682),

Gene: Knocker_66 Start: 59276, Stop: 59527, Start Num: 6
Candidate Starts for Knocker_66:
(Start: 6 @59276 has 2 MA's), (18, 59339), (21, 59375),

Gene: Ligma_62 Start: 50626, Stop: 50826, Start Num: 7
Candidate Starts for Ligma_62:
(Start: 3 @50590 has 1 MA's), (Start: 7 @50626 has 10 MA's), (23, 50728), (29, 50788), (30, 50815),

Gene: LittleMunchkin_63 Start: 53357, Stop: 53581, Start Num: 7

Candidate Starts for LittleMunchkin_63:

(Start: 7 @53357 has 10 MA's), (20, 53456), (23, 53483), (27, 53531), (29, 53543), (30, 53570),

Gene: MakoManhole_59 Start: 50530, Stop: 50700, Start Num: 12

Candidate Starts for MakoManhole_59:

(Start: 12 @50530 has 3 MA's), (29, 50662), (30, 50689),

Gene: Mariokart_58 Start: 49462, Stop: 49695, Start Num: 3

Candidate Starts for Mariokart_58:

(Start: 3 @49462 has 1 MA's), (Start: 7 @49498 has 10 MA's), (23, 49600), (29, 49660),

Gene: NHagos_59 Start: 49828, Stop: 50055, Start Num: 5

Candidate Starts for NHagos_59:

(Start: 5 @49828 has 1 MA's), (Start: 7 @49831 has 10 MA's), (9, 49837), (13, 49864), (28, 49987), (29, 49996), (30, 50023),

Gene: Pipefish_71 Start: 58442, Stop: 58660, Start Num: 10

Candidate Starts for Pipefish_71:

(1, 58295), (2, 58382), (4, 58400), (Start: 10 @58442 has 1 MA's), (Start: 11 @58451 has 2 MA's), (18, 58487), (21, 58529), (24, 58565), (29, 58622),

Gene: Quesadilla_66 Start: 58228, Stop: 58470, Start Num: 6

Candidate Starts for Quesadilla_66:

(Start: 6 @58228 has 2 MA's), (16, 58288), (19, 58300), (21, 58330), (22, 58339), (23, 58351),

Gene: Shatter_62 Start: 50626, Stop: 50826, Start Num: 7

Candidate Starts for Shatter_62:

(Start: 3 @50590 has 1 MA's), (Start: 7 @50626 has 10 MA's), (23, 50728), (29, 50788), (30, 50815),

Gene: Sisko_60 Start: 50847, Stop: 51044, Start Num: 7

Candidate Starts for Sisko_60:

(Start: 7 @50847 has 10 MA's), (21, 50925), (23, 50946), (29, 51006), (30, 51033),

Gene: Sour_62 Start: 53064, Stop: 53273, Start Num: 7

Candidate Starts for Sour_62:

(Start: 3 @53028 has 1 MA's), (Start: 7 @53064 has 10 MA's), (21, 53154), (29, 53235), (30, 53262),

Gene: Wooper_63 Start: 51561, Stop: 51731, Start Num: 12

Candidate Starts for Wooper_63:

(Start: 11 @51552 has 2 MA's), (Start: 12 @51561 has 3 MA's), (29, 51693), (30, 51720),

Gene: Yago84_59 Start: 50332, Stop: 50529, Start Num: 7

Candidate Starts for Yago84_59:

(Start: 7 @50332 has 10 MA's), (21, 50410), (23, 50431), (29, 50491), (30, 50518),