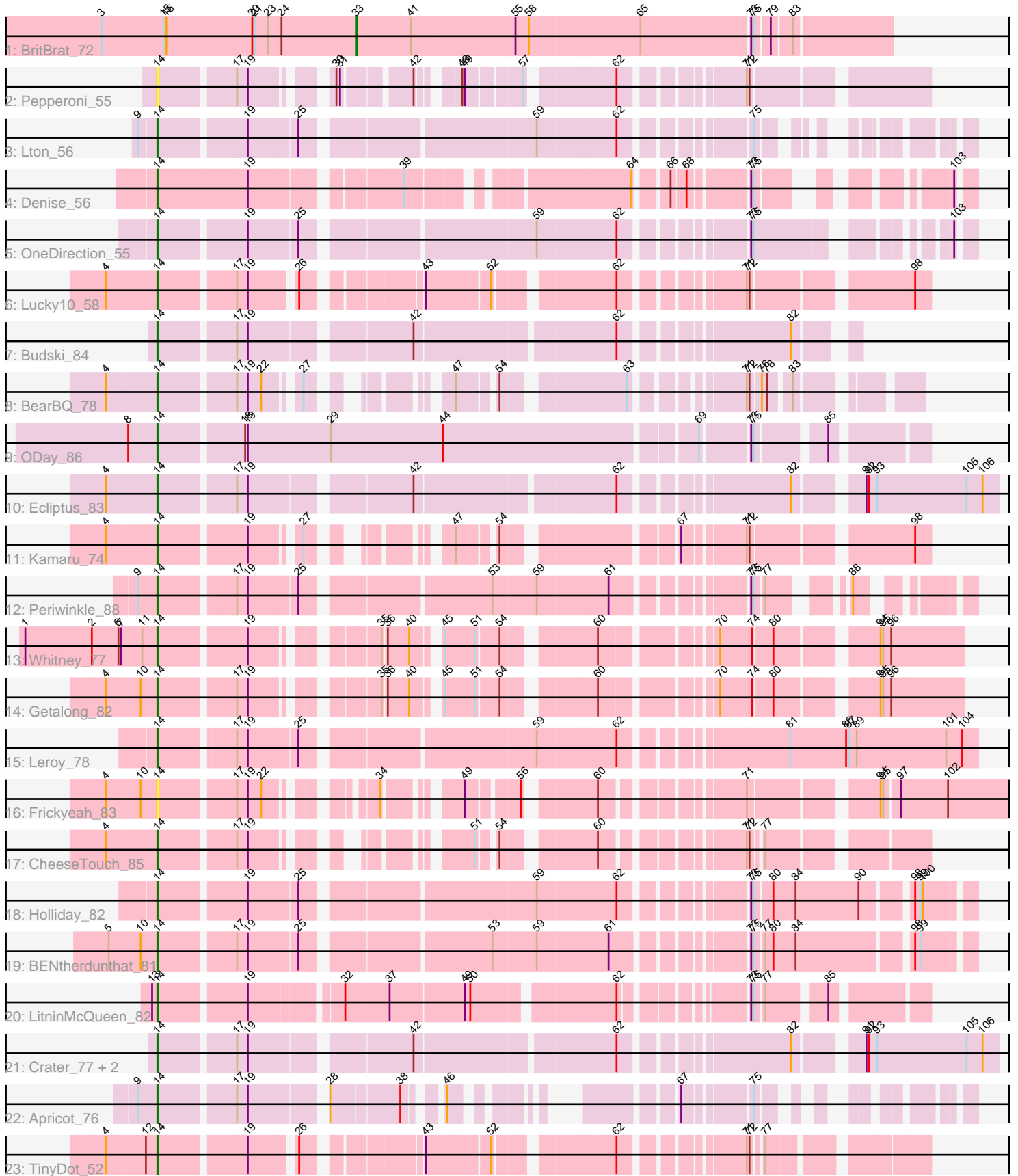


Pham 194294



Note: Tracks are now grouped by subcluster and scaled. Switching in subcluster is indicated by changes in track color. Track scale is now set by default to display the region 30 bp upstream of start 1 to 30 bp downstream of the last possible start. If this default region is judged to be packed too tightly with annotated starts, the track will be further scaled to only show that region of the ORF with annotated starts. This action will be indicated by adding "Zoomed" to the title. For starts, yellow indicates the location of called starts comprised solely of Glimmer/GeneMark auto-annotations, green indicates the location of called starts with at least 1 manual gene annotation.

Pham 194294 Report

This analysis was run 11/02/24 on database version 579.

Pham number 194294 has 25 members, 2 are drafts.

Phages represented in each track:

- Track 1 : BritBrat_72
- Track 2 : Pepperoni_55
- Track 3 : Lton_56
- Track 4 : Denise_56
- Track 5 : OneDirection_55
- Track 6 : Lucky10_58
- Track 7 : Budski_84
- Track 8 : BearBQ_78
- Track 9 : ODay_86
- Track 10 : Ecliptus_83
- Track 11 : Kamaru_74
- Track 12 : Periwinkle_88
- Track 13 : Whitney_77
- Track 14 : Getalong_82
- Track 15 : Leroy_78
- Track 16 : Frickyeah_83
- Track 17 : CheeseTouch_85
- Track 18 : Holliday_82
- Track 19 : BENtherdunthat_81
- Track 20 : LitninMcQueen_82
- Track 21 : Crater_77, Horus_79, Phistory_76
- Track 22 : Apricot_76
- Track 23 : TinyDot_52

Summary of Final Annotations (See graph section above for start numbers):

The start number called the most often in the published annotations is 14, it was called in 22 of the 23 non-draft genes in the pham.

Genes that call this "Most Annotated" start:

- Apricot_76, BENtherdunthat_81, BearBQ_78, Budski_84, CheeseTouch_85, Crater_77, Denise_56, Ecliptus_83, Frickyeah_83, Getalong_82, Holliday_82, Horus_79, Kamaru_74, Leroy_78, LitninMcQueen_82, Lton_56, Lucky10_58, ODay_86, OneDirection_55, Pepperoni_55, Periwinkle_88, Phistory_76, TinyDot_52,

Whitney_77,

Genes that have the "Most Annotated" start but do not call it:

-

Genes that do not have the "Most Annotated" start:

- BritBrat_72,

Summary by start number:

Start 14:

- Found in 24 of 25 (96.0%) of genes in pham
- Manual Annotations of this start: 22 of 23
- Called 100.0% of time when present
- Phage (with cluster) where this start called: Apricot_76 (DN3), BENtherdunthat_81 (DN1), BearBQ_78 (DN), Budski_84 (DN), CheeseTouch_85 (DN1), Crater_77 (DN3), Denise_56 (CZ5), Ecliptus_83 (DN), Frickyeah_83 (DN1), Getalong_82 (DN1), Holliday_82 (DN1), Horus_79 (DN1), Kamaru_74 (DN1), Leroy_78 (DN1), LitninMcQueen_82 (DN1), Lton_56 (CZ), Lucky10_58 (DH), ODay_86 (DN), OneDirection_55 (CZ6), Pepperoni_55 (CZ), Periwinkle_88 (DN1), Phistory_76 (DN1), TinyDot_52 (singleton), Whitney_77 (DN1),

Start 33:

- Found in 1 of 25 (4.0%) of genes in pham
- Manual Annotations of this start: 1 of 23
- Called 100.0% of time when present
- Phage (with cluster) where this start called: BritBrat_72 (CY2),

Summary by clusters:

There are 9 clusters represented in this pham: DN, CY2, singleton, DH, CZ6, CZ5, CZ, DN1, DN3,

Info for manual annotations of cluster CY2:

- Start number 33 was manually annotated 1 time for cluster CY2.

Info for manual annotations of cluster CZ:

- Start number 14 was manually annotated 1 time for cluster CZ.

Info for manual annotations of cluster CZ5:

- Start number 14 was manually annotated 1 time for cluster CZ5.

Info for manual annotations of cluster CZ6:

- Start number 14 was manually annotated 1 time for cluster CZ6.

Info for manual annotations of cluster DH:

- Start number 14 was manually annotated 1 time for cluster DH.

Info for manual annotations of cluster DN:

- Start number 14 was manually annotated 4 times for cluster DN.

Info for manual annotations of cluster DN1:

- Start number 14 was manually annotated 11 times for cluster DN1.

Info for manual annotations of cluster DN3:

•Start number 14 was manually annotated 2 times for cluster DN3.

Gene Information:

Gene: Apricot_76 Start: 43822, Stop: 44436, Start Num: 14

Candidate Starts for Apricot_76:

(9, 43801), (Start: 14 @43822 has 22 MA's), (17, 43900), (19, 43912), (28, 43981), (38, 44053), (46, 44080), (67, 44233), (75, 44296),

Gene: BENtherdunthat_81 Start: 45571, Stop: 46362, Start Num: 14

Candidate Starts for BENtherdunthat_81:

(5, 45517), (10, 45553), (Start: 14 @45571 has 22 MA's), (17, 45649), (19, 45661), (25, 45712), (53, 45901), (59, 45946), (61, 46021), (73, 46141), (75, 46144), (77, 46153), (80, 46162), (84, 46186), (98, 46303), (99, 46309),

Gene: BearBQ_78 Start: 46707, Stop: 47315, Start Num: 14

Candidate Starts for BearBQ_78:

(4, 46653), (Start: 14 @46707 has 22 MA's), (17, 46785), (19, 46797), (22, 46812), (27, 46842), (47, 46932), (54, 46968), (63, 47082), (71, 47169), (72, 47172), (76, 47181), (78, 47187), (83, 47208),

Gene: BritBrat_72 Start: 45785, Stop: 46360, Start Num: 33

Candidate Starts for BritBrat_72:

(3, 45500), (15, 45569), (16, 45572), (20, 45668), (21, 45671), (23, 45686), (24, 45701), (Start: 33 @45785 has 1 MA's), (41, 45845), (55, 45959), (58, 45974), (65, 46094), (73, 46214), (75, 46217), (79, 46232), (83, 46253),

Gene: Budski_84 Start: 46675, Stop: 47340, Start Num: 14

Candidate Starts for Budski_84:

(Start: 14 @46675 has 22 MA's), (17, 46753), (19, 46765), (42, 46927), (62, 47131), (82, 47287),

Gene: CheeseTouch_85 Start: 42327, Stop: 42953, Start Num: 14

Candidate Starts for CheeseTouch_85:

(4, 42273), (Start: 14 @42327 has 22 MA's), (17, 42405), (19, 42417), (51, 42573), (54, 42588), (60, 42669), (71, 42789), (72, 42792), (77, 42801),

Gene: Crater_77 Start: 44364, Stop: 45185, Start Num: 14

Candidate Starts for Crater_77:

(Start: 14 @44364 has 22 MA's), (17, 44442), (19, 44454), (42, 44616), (62, 44820), (82, 44976), (91, 45039), (92, 45042), (93, 45051), (105, 45150), (106, 45168),

Gene: Denise_56 Start: 35910, Stop: 36626, Start Num: 14

Candidate Starts for Denise_56:

(Start: 14 @35910 has 22 MA's), (19, 36009), (39, 36150), (64, 36363), (66, 36393), (68, 36408), (73, 36465), (75, 36468), (103, 36609),

Gene: Ecliptus_83 Start: 47333, Stop: 48154, Start Num: 14

Candidate Starts for Ecliptus_83:

(4, 47279), (Start: 14 @47333 has 22 MA's), (17, 47411), (19, 47423), (42, 47585), (62, 47789), (82, 47945), (91, 48008), (92, 48011), (93, 48020), (105, 48119), (106, 48137),

Gene: Frickyeah_83 Start: 45702, Stop: 46463, Start Num: 14

Candidate Starts for Frickyeah_83:

(4, 45648), (10, 45684), (Start: 14 @45702 has 22 MA's), (17, 45780), (19, 45792), (22, 45807), (34, 45888), (49, 45951), (56, 45996), (60, 46059), (71, 46179), (94, 46299), (95, 46302), (97, 46317), (102, 46368),

Gene: Getalong_82 Start: 46997, Stop: 47734, Start Num: 14

Candidate Starts for Getalong_82:

(4, 46943), (10, 46979), (Start: 14 @46997 has 22 MA's), (17, 47075), (19, 47087), (35, 47195), (36, 47198), (40, 47222), (45, 47243), (51, 47276), (54, 47300), (60, 47384), (70, 47489), (74, 47525), (80, 47546), (94, 47642), (95, 47645), (96, 47654),

Gene: Holliday_82 Start: 48542, Stop: 49330, Start Num: 14

Candidate Starts for Holliday_82:

(Start: 14 @48542 has 22 MA's), (19, 48632), (25, 48683), (59, 48917), (62, 49001), (73, 49109), (75, 49112), (80, 49130), (84, 49154), (90, 49223), (98, 49271), (99, 49277), (100, 49280),

Gene: Horus_79 Start: 46431, Stop: 47252, Start Num: 14

Candidate Starts for Horus_79:

(Start: 14 @46431 has 22 MA's), (17, 46509), (19, 46521), (42, 46683), (62, 46887), (82, 47043), (91, 47106), (92, 47109), (93, 47118), (105, 47217), (106, 47235),

Gene: Kamaru_74 Start: 44161, Stop: 44814, Start Num: 14

Candidate Starts for Kamaru_74:

(4, 44107), (Start: 14 @44161 has 22 MA's), (19, 44251), (27, 44296), (47, 44386), (54, 44422), (67, 44575), (71, 44635), (72, 44638), (98, 44797),

Gene: Leroy_78 Start: 44626, Stop: 45447, Start Num: 14

Candidate Starts for Leroy_78:

(Start: 14 @44626 has 22 MA's), (17, 44701), (19, 44713), (25, 44764), (59, 44998), (62, 45082), (81, 45238), (86, 45301), (87, 45304), (89, 45313), (101, 45412), (104, 45430),

Gene: LitninMcQueen_82 Start: 45874, Stop: 46599, Start Num: 14

Candidate Starts for LitninMcQueen_82:

(13, 45868), (Start: 14 @45874 has 22 MA's), (19, 45964), (32, 46054), (37, 46102), (49, 46180), (50, 46186), (62, 46327), (73, 46435), (75, 46438), (77, 46447), (85, 46504),

Gene: Lton_56 Start: 33761, Stop: 34471, Start Num: 14

Candidate Starts for Lton_56:

(9, 33743), (Start: 14 @33761 has 22 MA's), (19, 33851), (25, 33902), (59, 34136), (62, 34220), (75, 34331),

Gene: Lucky10_58 Start: 36978, Stop: 37679, Start Num: 14

Candidate Starts for Lucky10_58:

(4, 36924), (Start: 14 @36978 has 22 MA's), (17, 37056), (19, 37068), (26, 37113), (43, 37218), (52, 37284), (62, 37392), (71, 37500), (72, 37503), (98, 37662),

Gene: ODay_86 Start: 47792, Stop: 48577, Start Num: 14

Candidate Starts for ODay_86:

(8, 47759), (Start: 14 @47792 has 22 MA's), (18, 47879), (19, 47882), (29, 47972), (44, 48098), (69, 48365), (73, 48413), (75, 48416), (85, 48482),

Gene: OneDirection_55 Start: 33949, Stop: 34695, Start Num: 14

Candidate Starts for OneDirection_55:

(Start: 14 @33949 has 22 MA's), (19, 34039), (25, 34090), (59, 34324), (62, 34408), (73, 34516), (75, 34519), (103, 34678),

Gene: Pepperoni_55 Start: 35253, Stop: 35927, Start Num: 14

Candidate Starts for Pepperoni_55:

(Start: 14 @35253 has 22 MA's), (17, 35331), (19, 35343), (30, 35406), (31, 35409), (42, 35472), (48, 35502), (49, 35505), (57, 35556), (62, 35640), (71, 35748), (72, 35751),

Gene: Periwinkle_88 Start: 47628, Stop: 48359, Start Num: 14

Candidate Starts for Periwinkle_88:

(9, 47607), (Start: 14 @47628 has 22 MA's), (17, 47703), (19, 47715), (25, 47766), (53, 47955), (59, 48000), (61, 48075), (73, 48195), (75, 48198), (77, 48207), (88, 48264),

Gene: Phistory_76 Start: 43529, Stop: 44350, Start Num: 14

Candidate Starts for Phistory_76:

(Start: 14 @43529 has 22 MA's), (17, 43607), (19, 43619), (42, 43781), (62, 43985), (82, 44141), (91, 44204), (92, 44207), (93, 44216), (105, 44315), (106, 44333),

Gene: TinyDot_52 Start: 33073, Stop: 33759, Start Num: 14

Candidate Starts for TinyDot_52:

(4, 33019), (12, 33061), (Start: 14 @33073 has 22 MA's), (19, 33163), (26, 33208), (43, 33313), (52, 33379), (62, 33487), (71, 33595), (72, 33598), (77, 33607),

Gene: Whitney_77 Start: 46318, Stop: 47055, Start Num: 14

Candidate Starts for Whitney_77:

(1, 46171), (2, 46246), (6, 46276), (7, 46279), (11, 46303), (Start: 14 @46318 has 22 MA's), (19, 46408), (35, 46516), (36, 46519), (40, 46543), (45, 46564), (51, 46597), (54, 46621), (60, 46705), (70, 46810), (74, 46846), (80, 46867), (94, 46963), (95, 46966), (96, 46975),