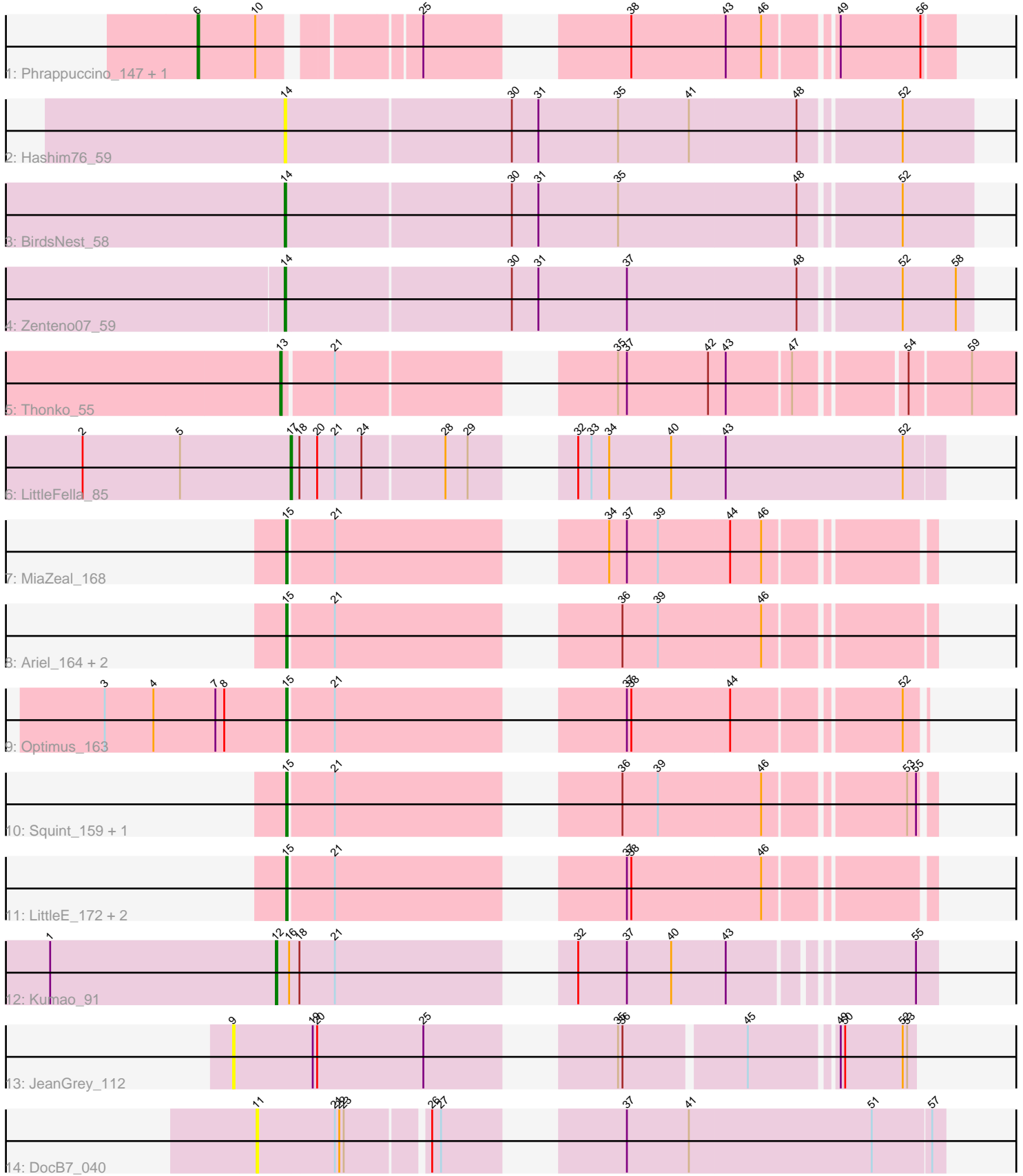


Pham 194348



Note: Tracks are now grouped by subcluster and scaled. Switching in subcluster is indicated by changes in track color. Track scale is now set by default to display the region 30 bp upstream of start 1 to 30 bp downstream of the last possible start. If this default region is judged to be packed too tightly with annotated starts, the track will be further scaled to only show that region of the ORF with annotated starts. This action will be indicated by adding "Zoomed" to the title. For starts, yellow indicates the location of called starts comprised solely of Glimmer/GeneMark auto-annotations, green indicates the location of called starts with at least 1 manual gene annotation.

Pham 194348 Report

This analysis was run 11/02/24 on database version 579.

Pham number 194348 has 20 members, 4 are drafts.

Phages represented in each track:

- Track 1 : Phrappuccino_147, Settecandela_147
- Track 2 : Hashim76_59
- Track 3 : BirdsNest_58
- Track 4 : Zenteno07_59
- Track 5 : Thonko_55
- Track 6 : LittleFella_85
- Track 7 : MiaZeal_168
- Track 8 : Ariel_164, Superphikiman_162, Courthouse_161
- Track 9 : Optimus_163
- Track 10 : Squint_159, Gonephishing_158
- Track 11 : LittleE_172, Lucky2013_161, Porcelain_165
- Track 12 : Kumao_91
- Track 13 : JeanGrey_112
- Track 14 : DocB7_040

Summary of Final Annotations (See graph section above for start numbers):

The start number called the most often in the published annotations is 15, it was called in 9 of the 16 non-draft genes in the pham.

Genes that call this "Most Annotated" start:

- Ariel_164, Courthouse_161, Gonephishing_158, LittleE_172, Lucky2013_161, MiaZeal_168, Optimus_163, Porcelain_165, Squint_159, Superphikiman_162,

Genes that have the "Most Annotated" start but do not call it:

-

Genes that do not have the "Most Annotated" start:

- BirdsNest_58, DocB7_040, Hashim76_59, JeanGrey_112, Kumao_91, LittleFella_85, Phrappuccino_147, Settecandela_147, Thonko_55, Zenteno07_59,

Summary by start number:

Start 6:

- Found in 2 of 20 (10.0%) of genes in pham
- Manual Annotations of this start: 2 of 16
- Called 100.0% of time when present
- Phage (with cluster) where this start called: Phrappuccino_147 (AA), Settecandela_147 (AA),

Start 9:

- Found in 1 of 20 (5.0%) of genes in pham
- No Manual Annotations of this start.
- Called 100.0% of time when present
- Phage (with cluster) where this start called: JeanGrey_112 (singleton),

Start 11:

- Found in 1 of 20 (5.0%) of genes in pham
- No Manual Annotations of this start.
- Called 100.0% of time when present
- Phage (with cluster) where this start called: DocB7_040 (singleton),

Start 12:

- Found in 1 of 20 (5.0%) of genes in pham
- Manual Annotations of this start: 1 of 16
- Called 100.0% of time when present
- Phage (with cluster) where this start called: Kumao_91 (singleton),

Start 13:

- Found in 1 of 20 (5.0%) of genes in pham
- Manual Annotations of this start: 1 of 16
- Called 100.0% of time when present
- Phage (with cluster) where this start called: Thonko_55 (B8),

Start 14:

- Found in 3 of 20 (15.0%) of genes in pham
- Manual Annotations of this start: 2 of 16
- Called 100.0% of time when present
- Phage (with cluster) where this start called: BirdsNest_58 (B13), Hashim76_59 (B13), Zenteno07_59 (B13),

Start 15:

- Found in 10 of 20 (50.0%) of genes in pham
- Manual Annotations of this start: 9 of 16
- Called 100.0% of time when present
- Phage (with cluster) where this start called: Ariel_164 (J), Courthouse_161 (J), Gonephishing_158 (J), LittleE_172 (J), Lucky2013_161 (J), MiaZeal_168 (J), Optimus_163 (J), Porcelain_165 (J), Squint_159 (J), Superphikiman_162 (J),

Start 17:

- Found in 1 of 20 (5.0%) of genes in pham
- Manual Annotations of this start: 1 of 16
- Called 100.0% of time when present
- Phage (with cluster) where this start called: LittleFella_85 (DG2),

Summary by clusters:

There are 6 clusters represented in this pham: AA, singleton, J, DG2, B13, B8,

Info for manual annotations of cluster AA:

•Start number 6 was manually annotated 2 times for cluster AA.

Info for manual annotations of cluster B13:

•Start number 14 was manually annotated 2 times for cluster B13.

Info for manual annotations of cluster B8:

•Start number 13 was manually annotated 1 time for cluster B8.

Info for manual annotations of cluster DG2:

•Start number 17 was manually annotated 1 time for cluster DG2.

Info for manual annotations of cluster J:

•Start number 15 was manually annotated 9 times for cluster J.

Gene Information:

Gene: Ariel_164 Start: 83788, Stop: 84171, Start Num: 15

Candidate Starts for Ariel_164:

(Start: 15 @83788 has 9 MA's), (21, 83818), (36, 83974), (39, 83998), (46, 84067),

Gene: BirdsNest_58 Start: 48152, Stop: 47700, Start Num: 14

Candidate Starts for BirdsNest_58:

(Start: 14 @48152 has 2 MA's), (30, 48002), (31, 47984), (35, 47930), (48, 47810), (52, 47747),

Gene: Courthouse_161 Start: 84232, Stop: 84615, Start Num: 15

Candidate Starts for Courthouse_161:

(Start: 15 @84232 has 9 MA's), (21, 84262), (36, 84418), (39, 84442), (46, 84511),

Gene: DocB7_040 Start: 39094, Stop: 38681, Start Num: 11

Candidate Starts for DocB7_040:

(11, 39094), (21, 39043), (22, 39040), (23, 39037), (26, 38986), (27, 38980), (37, 38893), (41, 38851), (51, 38728), (57, 38689),

Gene: Gonephishing_158 Start: 85692, Stop: 86072, Start Num: 15

Candidate Starts for Gonephishing_158:

(Start: 15 @85692 has 9 MA's), (21, 85722), (36, 85878), (39, 85902), (46, 85971), (53, 86058), (55, 86064),

Gene: Hashim76_59 Start: 48722, Stop: 48270, Start Num: 14

Candidate Starts for Hashim76_59:

(Start: 14 @48722 has 2 MA's), (30, 48572), (31, 48554), (35, 48500), (41, 48452), (48, 48380), (52, 48317),

Gene: JeanGrey_112 Start: 87695, Stop: 88102, Start Num: 9

Candidate Starts for JeanGrey_112:

(9, 87695), (19, 87749), (20, 87752), (25, 87824), (35, 87917), (36, 87920), (45, 87998), (49, 88052), (50, 88055), (52, 88094), (53, 88097),

Gene: Kumao_91 Start: 57065, Stop: 57454, Start Num: 12

Candidate Starts for Kumao_91:

(1, 56912), (Start: 12 @57065 has 1 MA's), (16, 57074), (18, 57080), (21, 57104), (32, 57230), (37, 57263), (40, 57293), (43, 57329), (55, 57440),

Gene: LittleE_172 Start: 88564, Stop: 88944, Start Num: 15

Candidate Starts for LittleE_172:

(Start: 15 @88564 has 9 MA's), (21, 88594), (37, 88753), (38, 88756), (46, 88843),

Gene: LittleFella_85 Start: 60323, Stop: 60721, Start Num: 17

Candidate Starts for LittleFella_85:

(2, 60182), (5, 60248), (Start: 17 @60323 has 1 MA's), (18, 60329), (20, 60341), (21, 60353), (24, 60371), (28, 60425), (29, 60440), (32, 60476), (33, 60485), (34, 60497), (40, 60539), (43, 60575), (52, 60695),

Gene: Lucky2013_161 Start: 84061, Stop: 84441, Start Num: 15

Candidate Starts for Lucky2013_161:

(Start: 15 @84061 has 9 MA's), (21, 84091), (37, 84250), (38, 84253), (46, 84340),

Gene: MiaZeal_168 Start: 85208, Stop: 85588, Start Num: 15

Candidate Starts for MiaZeal_168:

(Start: 15 @85208 has 9 MA's), (21, 85238), (34, 85385), (37, 85397), (39, 85418), (44, 85466), (46, 85487),

Gene: Optimus_163 Start: 87886, Stop: 88260, Start Num: 15

Candidate Starts for Optimus_163:

(3, 87763), (4, 87796), (7, 87838), (8, 87844), (Start: 15 @87886 has 9 MA's), (21, 87916), (37, 88075), (38, 88078), (44, 88144), (52, 88249),

Gene: Phrappuccino_147 Start: 102698, Stop: 103132, Start Num: 6

Candidate Starts for Phrappuccino_147:

(Start: 6 @102698 has 2 MA's), (10, 102737), (25, 102827), (38, 102929), (43, 102992), (46, 103016), (49, 103058), (56, 103112),

Gene: Porcelain_165 Start: 85007, Stop: 85387, Start Num: 15

Candidate Starts for Porcelain_165:

(Start: 15 @85007 has 9 MA's), (21, 85037), (37, 85196), (38, 85199), (46, 85286),

Gene: Settecandela_147 Start: 102698, Stop: 103132, Start Num: 6

Candidate Starts for Settecandela_147:

(Start: 6 @102698 has 2 MA's), (10, 102737), (25, 102827), (38, 102929), (43, 102992), (46, 103016), (49, 103058), (56, 103112),

Gene: Squint_159 Start: 84873, Stop: 85253, Start Num: 15

Candidate Starts for Squint_159:

(Start: 15 @84873 has 9 MA's), (21, 84903), (36, 85059), (39, 85083), (46, 85152), (53, 85239), (55, 85245),

Gene: Superphikiman_162 Start: 83928, Stop: 84311, Start Num: 15

Candidate Starts for Superphikiman_162:

(Start: 15 @83928 has 9 MA's), (21, 83958), (36, 84114), (39, 84138), (46, 84207),

Gene: Thonko_55 Start: 46989, Stop: 46534, Start Num: 13

Candidate Starts for Thonko_55:

(Start: 13 @46989 has 1 MA's), (21, 46956), (35, 46806), (37, 46800), (42, 46746), (43, 46734), (47, 46692), (54, 46626), (59, 46587),

Gene: Zenteno07_59 Start: 48384, Stop: 47932, Start Num: 14

Candidate Starts for Zenteno07_59:

(Start: 14 @48384 has 2 MA's), (30, 48234), (31, 48216), (37, 48156), (48, 48042), (52, 47979), (58, 47943),