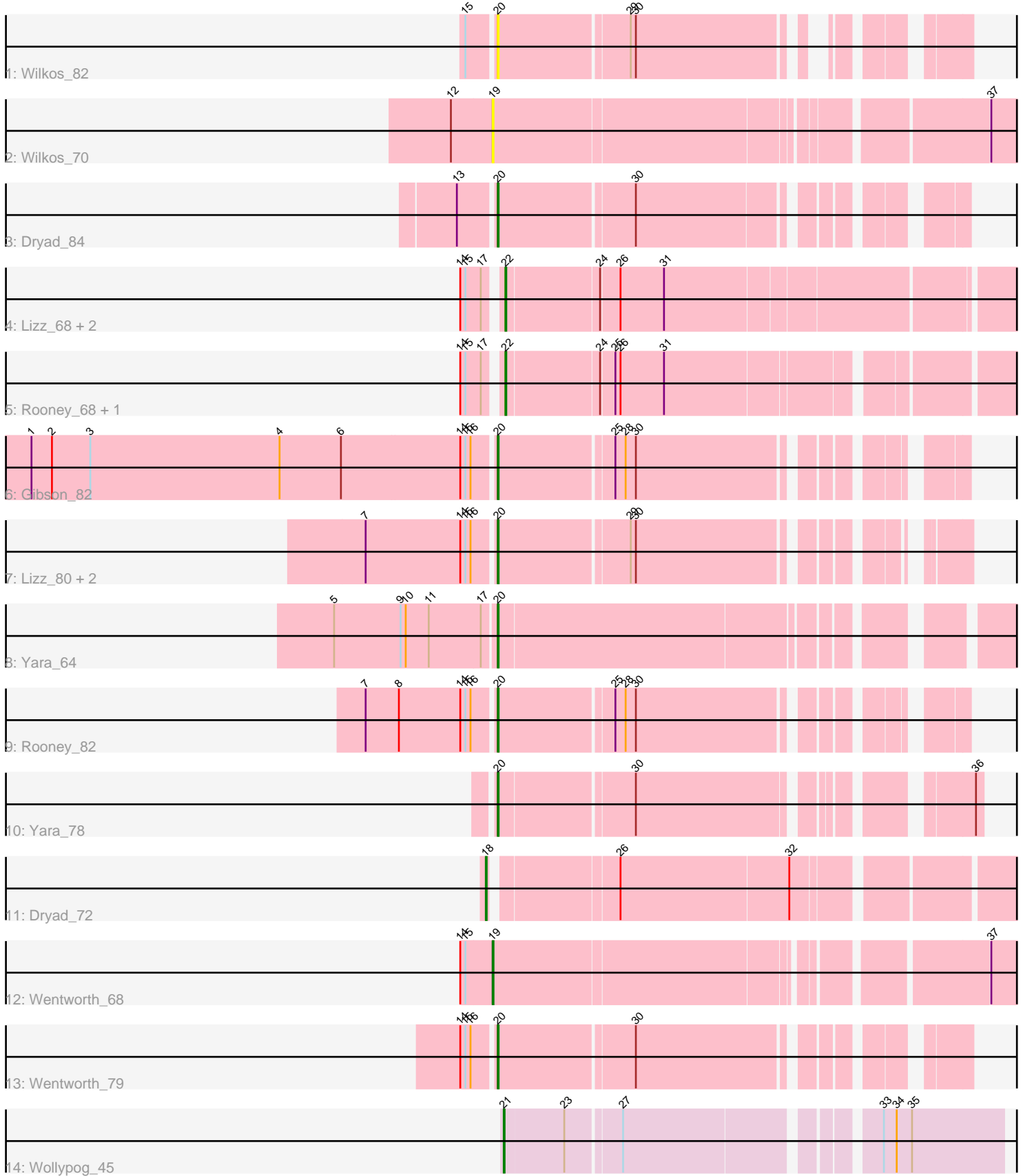


Pham 194365



Note: Tracks are now grouped by subcluster and scaled. Switching in subcluster is indicated by changes in track color. Track scale is now set by default to display the region 30 bp upstream of start 1 to 30 bp downstream of the last possible start. If this default region is judged to be packed too tightly with annotated starts, the track will be further scaled to only show that region of the ORF with annotated starts. This action will be indicated by adding "Zoomed" to the title. For starts, yellow indicates the location of called starts comprised solely of Glimmer/GeneMark auto-annotations, green indicates the location of called starts with at least 1 manual gene annotation.

Pham 194365 Report

This analysis was run 11/02/24 on database version 579.

Pham number 194365 has 19 members, 2 are drafts.

Phages represented in each track:

- Track 1 : Wilkos_82
- Track 2 : Wilkos_70
- Track 3 : Dryad_84
- Track 4 : Lizz_68, ShakeNBake_68, PHTowN_68
- Track 5 : Rooney_68, Gibson_68
- Track 6 : Gibson_82
- Track 7 : Lizz_80, PHTowN_80, ShakeNBake_80
- Track 8 : Yara_64
- Track 9 : Rooney_82
- Track 10 : Yara_78
- Track 11 : Dryad_72
- Track 12 : Wentworth_68
- Track 13 : Wentworth_79
- Track 14 : Wollypog_45

Summary of Final Annotations (See graph section above for start numbers):

The start number called the most often in the published annotations is 20, it was called in 9 of the 17 non-draft genes in the pham.

Genes that call this "Most Annotated" start:

- Dryad_84, Gibson_82, Lizz_80, PHTowN_80, Rooney_82, ShakeNBake_80, Wentworth_79, Wilkos_82, Yara_64, Yara_78,

Genes that have the "Most Annotated" start but do not call it:

-

Genes that do not have the "Most Annotated" start:

- Dryad_72, Gibson_68, Lizz_68, PHTowN_68, Rooney_68, ShakeNBake_68, Wentworth_68, Wilkos_70, Wollypog_45,

Summary by start number:

Start 18:

- Found in 1 of 19 (5.3%) of genes in pham
- Manual Annotations of this start: 1 of 17
- Called 100.0% of time when present
- Phage (with cluster) where this start called: Dryad_72 (BN),

Start 19:

- Found in 2 of 19 (10.5%) of genes in pham
- Manual Annotations of this start: 1 of 17
- Called 100.0% of time when present
- Phage (with cluster) where this start called: Wentworth_68 (BN), Wilkos_70 (BN),

Start 20:

- Found in 10 of 19 (52.6%) of genes in pham
- Manual Annotations of this start: 9 of 17
- Called 100.0% of time when present
- Phage (with cluster) where this start called: Dryad_84 (BN), Gibson_82 (BN), Lizz_80 (BN), PHTown_80 (BN), Rooney_82 (BN), ShakeNBake_80 (BN), Wentworth_79 (BN), Wilkos_82 (BN), Yara_64 (BN), Yara_78 (BN),

Start 21:

- Found in 1 of 19 (5.3%) of genes in pham
- Manual Annotations of this start: 1 of 17
- Called 100.0% of time when present
- Phage (with cluster) where this start called: Wollypog_45 (singleton),

Start 22:

- Found in 5 of 19 (26.3%) of genes in pham
- Manual Annotations of this start: 5 of 17
- Called 100.0% of time when present
- Phage (with cluster) where this start called: Gibson_68 (BN), Lizz_68 (BN), PHTown_68 (BN), Rooney_68 (BN), ShakeNBake_68 (BN),

Summary by clusters:

There are 2 clusters represented in this pham: BN, singleton,

Info for manual annotations of cluster BN:

- Start number 18 was manually annotated 1 time for cluster BN.
- Start number 19 was manually annotated 1 time for cluster BN.
- Start number 20 was manually annotated 9 times for cluster BN.
- Start number 22 was manually annotated 5 times for cluster BN.

Gene Information:

Gene: Dryad_84 Start: 55433, Stop: 54966, Start Num: 20

Candidate Starts for Dryad_84:

(13, 55472), (Start: 20 @55433 has 9 MA's), (30, 55280),

Gene: Dryad_72 Start: 48943, Stop: 48380, Start Num: 18

Candidate Starts for Dryad_72:

(Start: 18 @48943 has 1 MA's), (26, 48808), (32, 48613),

Gene: Gibson_82 Start: 55230, Stop: 54763, Start Num: 20

Candidate Starts for Gibson_82:

(1, 55767), (2, 55743), (3, 55698), (4, 55476), (6, 55404), (14, 55266), (15, 55260), (16, 55254), (Start: 20 @55230 has 9 MA's), (25, 55101), (28, 55089), (30, 55077),

Gene: Gibson_68 Start: 48192, Stop: 47644, Start Num: 22

Candidate Starts for Gibson_68:

(14, 48231), (15, 48225), (17, 48207), (Start: 22 @48192 has 5 MA's), (24, 48087), (25, 48072), (26, 48066), (31, 48015),

Gene: Lizz_68 Start: 48031, Stop: 47468, Start Num: 22

Candidate Starts for Lizz_68:

(14, 48070), (15, 48064), (17, 48046), (Start: 22 @48031 has 5 MA's), (24, 47926), (26, 47905), (31, 47854),

Gene: Lizz_80 Start: 54885, Stop: 54421, Start Num: 20

Candidate Starts for Lizz_80:

(7, 55032), (14, 54921), (15, 54915), (16, 54909), (Start: 20 @54885 has 9 MA's), (29, 54738), (30, 54732),

Gene: PHTowN_80 Start: 54883, Stop: 54419, Start Num: 20

Candidate Starts for PHTowN_80:

(7, 55030), (14, 54919), (15, 54913), (16, 54907), (Start: 20 @54883 has 9 MA's), (29, 54736), (30, 54730),

Gene: PHTowN_68 Start: 48029, Stop: 47466, Start Num: 22

Candidate Starts for PHTowN_68:

(14, 48068), (15, 48062), (17, 48044), (Start: 22 @48029 has 5 MA's), (24, 47924), (26, 47903), (31, 47852),

Gene: Rooney_68 Start: 48168, Stop: 47620, Start Num: 22

Candidate Starts for Rooney_68:

(14, 48207), (15, 48201), (17, 48183), (Start: 22 @48168 has 5 MA's), (24, 48063), (25, 48048), (26, 48042), (31, 47991),

Gene: Rooney_82 Start: 55236, Stop: 54769, Start Num: 20

Candidate Starts for Rooney_82:

(7, 55383), (8, 55344), (14, 55272), (15, 55266), (16, 55260), (Start: 20 @55236 has 9 MA's), (25, 55107), (28, 55095), (30, 55083),

Gene: ShakeNBake_68 Start: 48056, Stop: 47493, Start Num: 22

Candidate Starts for ShakeNBake_68:

(14, 48095), (15, 48089), (17, 48071), (Start: 22 @48056 has 5 MA's), (24, 47951), (26, 47930), (31, 47879),

Gene: ShakeNBake_80 Start: 54910, Stop: 54446, Start Num: 20

Candidate Starts for ShakeNBake_80:

(7, 55057), (14, 54946), (15, 54940), (16, 54934), (Start: 20 @54910 has 9 MA's), (29, 54763), (30, 54757),

Gene: Wentworth_68 Start: 48157, Stop: 47597, Start Num: 19

Candidate Starts for Wentworth_68:

(14, 48193), (15, 48187), (Start: 19 @48157 has 1 MA's), (37, 47632),

Gene: Wentworth_79 Start: 54336, Stop: 53863, Start Num: 20

Candidate Starts for Wentworth_79:

(14, 54372), (15, 54366), (16, 54360), (Start: 20 @54336 has 9 MA's), (30, 54183),

Gene: Wilkos_82 Start: 54813, Stop: 54361, Start Num: 20

Candidate Starts for Wilkos_82:

(15, 54843), (Start: 20 @54813 has 9 MA's), (29, 54666), (30, 54660),

Gene: Wilkos_70 Start: 48319, Stop: 47750, Start Num: 19

Candidate Starts for Wilkos_70:

(12, 48367), (Start: 19 @48319 has 1 MA's), (37, 47785),

Gene: Wollypog_45 Start: 32939, Stop: 33472, Start Num: 21

Candidate Starts for Wollypog_45:

(Start: 21 @32939 has 1 MA's), (23, 33008), (27, 33068), (33, 33332), (34, 33347), (35, 33365),

Gene: Yara_64 Start: 46991, Stop: 46455, Start Num: 20

Candidate Starts for Yara_64:

(5, 47177), (9, 47099), (10, 47093), (11, 47066), (17, 47006), (Start: 20 @46991 has 9 MA's),

Gene: Yara_78 Start: 53975, Stop: 53490, Start Num: 20

Candidate Starts for Yara_78:

(Start: 20 @53975 has 9 MA's), (30, 53825), (36, 53498),