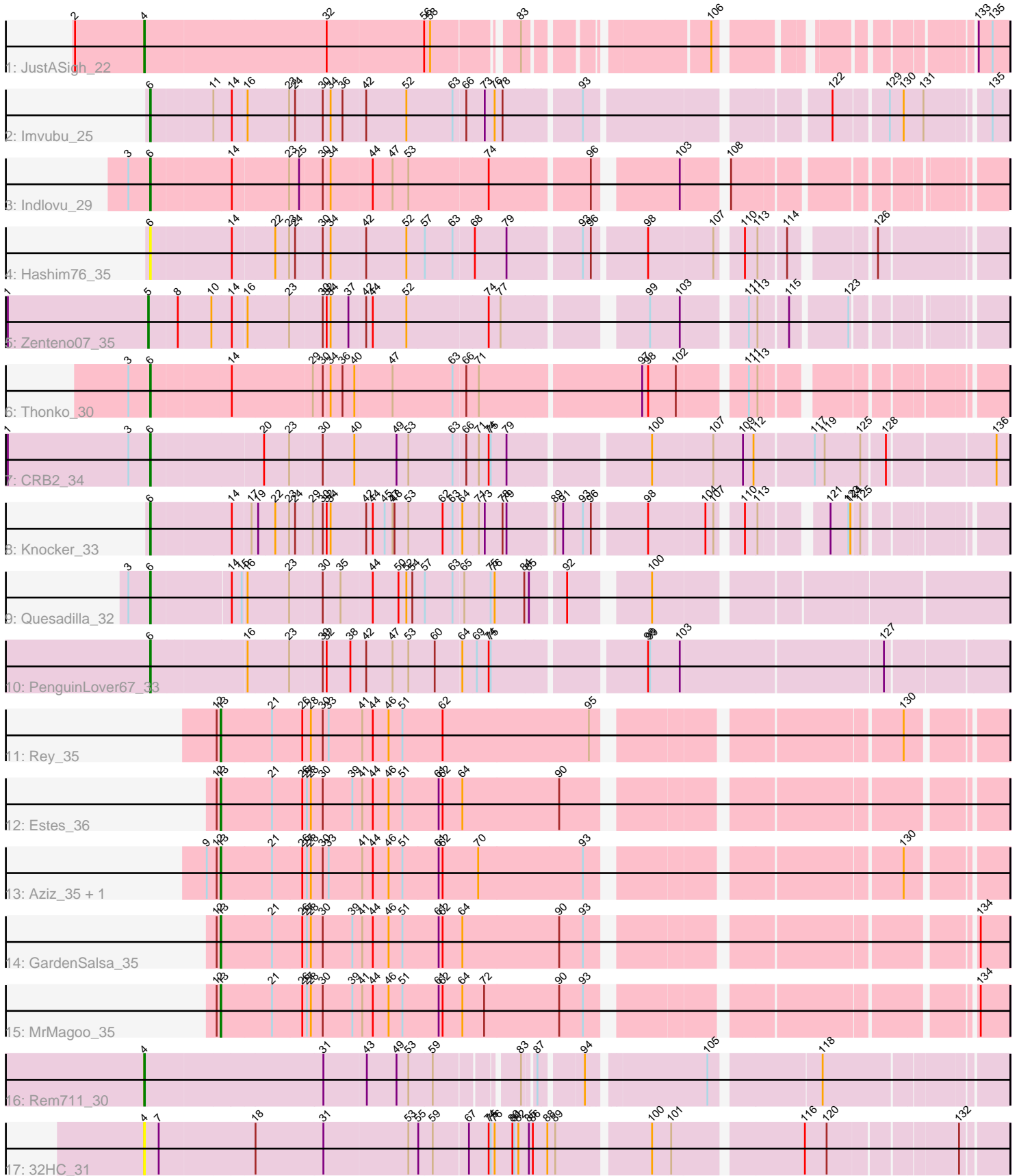


Pham 194381



Note: Tracks are now grouped by subcluster and scaled. Switching in subcluster is indicated by changes in track color. Track scale is now set by default to display the region 30 bp upstream of start 1 to 30 bp downstream of the last possible start. If this default region is judged to be packed too tightly with annotated starts, the track will be further scaled to only show that region of the ORF with annotated starts. This action will be indicated by adding "Zoomed" to the title. For starts, yellow indicates the location of called starts comprised solely of Glimmer/GeneMark auto-annotations, green indicates the location of called starts with at least 1 manual gene annotation.

Pham 194381 Report

This analysis was run 11/02/24 on database version 579.

Pham number 194381 has 18 members, 2 are drafts.

Phages represented in each track:

- Track 1 : JustASigh_22
- Track 2 : Imvubu_25
- Track 3 : Indlovu_29
- Track 4 : Hashim76_35
- Track 5 : Zenteno07_35
- Track 6 : Thonko_30
- Track 7 : CRB2_34
- Track 8 : Knocker_33
- Track 9 : Quesadilla_32
- Track 10 : PenguinLover67_33
- Track 11 : Rey_35
- Track 12 : Estes_36
- Track 13 : Aziz_35, GenevaB15_35
- Track 14 : GardenSalsa_35
- Track 15 : MrMagoo_35
- Track 16 : Rem711_30
- Track 17 : 32HC_31

Summary of Final Annotations (See graph section above for start numbers):

The start number called the most often in the published annotations is 6, it was called in 7 of the 16 non-draft genes in the pham.

Genes that call this "Most Annotated" start:

- CRB2_34, Hashim76_35, Imvubu_25, Indlovu_29, Knocker_33, PenguinLover67_33, Quesadilla_32, Thonko_30,

Genes that have the "Most Annotated" start but do not call it:

-

Genes that do not have the "Most Annotated" start:

- 32HC_31, Aziz_35, Estes_36, GardenSalsa_35, GenevaB15_35, JustASigh_22, MrMagoo_35, Rem711_30, Rey_35, Zenteno07_35,

Summary by start number:

Start 4:

- Found in 3 of 18 (16.7%) of genes in pham
- Manual Annotations of this start: 2 of 16
- Called 100.0% of time when present
- Phage (with cluster) where this start called: 32HC_31 (Z), JustASigh_22 (AH), Rem711_30 (Z),

Start 5:

- Found in 1 of 18 (5.6%) of genes in pham
- Manual Annotations of this start: 1 of 16
- Called 100.0% of time when present
- Phage (with cluster) where this start called: Zenteno07_35 (B13),

Start 6:

- Found in 8 of 18 (44.4%) of genes in pham
- Manual Annotations of this start: 7 of 16
- Called 100.0% of time when present
- Phage (with cluster) where this start called: CRB2_34 (B9), Hashim76_35 (B13), Imvubu_25 (B10), Indlovu_29 (B11), Knocker_33 (B9), PenguinLover67_33 (B9), Quesadilla_32 (B9), Thonko_30 (B8),

Start 13:

- Found in 6 of 18 (33.3%) of genes in pham
- Manual Annotations of this start: 6 of 16
- Called 100.0% of time when present
- Phage (with cluster) where this start called: Aziz_35 (M2), Estes_36 (M2), GardenSalsa_35 (M2), GenevaB15_35 (M2), MrMagoo_35 (M2), Rey_35 (M2),

Summary by clusters:

There are 8 clusters represented in this pham: AH, B11, B13, B10, M2, Z, B8, B9,

Info for manual annotations of cluster AH:

- Start number 4 was manually annotated 1 time for cluster AH.

Info for manual annotations of cluster B10:

- Start number 6 was manually annotated 1 time for cluster B10.

Info for manual annotations of cluster B11:

- Start number 6 was manually annotated 1 time for cluster B11.

Info for manual annotations of cluster B13:

- Start number 5 was manually annotated 1 time for cluster B13.

Info for manual annotations of cluster B8:

- Start number 6 was manually annotated 1 time for cluster B8.

Info for manual annotations of cluster B9:

- Start number 6 was manually annotated 4 times for cluster B9.

Info for manual annotations of cluster M2:

- Start number 13 was manually annotated 6 times for cluster M2.

Info for manual annotations of cluster Z:

- Start number 4 was manually annotated 1 time for cluster Z.

Gene Information:

Gene: 32HC_31 Start: 25140, Stop: 26351, Start Num: 4

Candidate Starts for 32HC_31:

(Start: 4 @25140 has 2 MA's), (7, 25161), (18, 25299), (31, 25401), (53, 25524), (55, 25539), (59, 25560), (67, 25611), (74, 25641), (75, 25644), (76, 25650), (80, 25677), (81, 25680), (82, 25686), (85, 25701), (86, 25707), (88, 25728), (89, 25740), (100, 25872), (101, 25899), (116, 26082), (120, 26115), (132, 26289),

Gene: Aziz_35 Start: 27886, Stop: 28968, Start Num: 13

Candidate Starts for Aziz_35:

(9, 27865), (12, 27880), (Start: 13 @27886 has 6 MA's), (21, 27961), (26, 28006), (27, 28012), (28, 28018), (30, 28036), (33, 28045), (41, 28096), (44, 28111), (46, 28135), (51, 28156), (61, 28210), (62, 28216), (70, 28270), (93, 28426), (130, 28837),

Gene: CRB2_34 Start: 34225, Stop: 35433, Start Num: 6

Candidate Starts for CRB2_34:

(1, 34009), (3, 34192), (Start: 6 @34225 has 7 MA's), (20, 34387), (23, 34423), (30, 34471), (40, 34516), (49, 34576), (53, 34594), (63, 34660), (66, 34678), (71, 34696), (74, 34711), (75, 34714), (79, 34738), (100, 34933), (107, 35023), (109, 35068), (112, 35083), (117, 35170), (119, 35185), (125, 35236), (128, 35269), (136, 35416),

Gene: Estes_36 Start: 28017, Stop: 29099, Start Num: 13

Candidate Starts for Estes_36:

(12, 28011), (Start: 13 @28017 has 6 MA's), (21, 28092), (26, 28137), (27, 28143), (28, 28149), (30, 28167), (39, 28212), (41, 28227), (44, 28242), (46, 28266), (51, 28287), (61, 28341), (62, 28347), (64, 28377), (90, 28521),

Gene: GardenSalsa_35 Start: 27841, Stop: 28923, Start Num: 13

Candidate Starts for GardenSalsa_35:

(12, 27835), (Start: 13 @27841 has 6 MA's), (21, 27916), (26, 27961), (27, 27967), (28, 27973), (30, 27991), (39, 28036), (41, 28051), (44, 28066), (46, 28090), (51, 28111), (61, 28165), (62, 28171), (64, 28201), (90, 28345), (93, 28381), (134, 28879),

Gene: GenevaB15_35 Start: 27886, Stop: 28968, Start Num: 13

Candidate Starts for GenevaB15_35:

(9, 27865), (12, 27880), (Start: 13 @27886 has 6 MA's), (21, 27961), (26, 28006), (27, 28012), (28, 28018), (30, 28036), (33, 28045), (41, 28096), (44, 28111), (46, 28135), (51, 28156), (61, 28210), (62, 28216), (70, 28270), (93, 28426), (130, 28837),

Gene: Hashim76_35 Start: 31239, Stop: 32393, Start Num: 6

Candidate Starts for Hashim76_35:

(Start: 6 @31239 has 7 MA's), (14, 31356), (22, 31416), (23, 31437), (24, 31446), (30, 31485), (34, 31494), (42, 31545), (52, 31605), (57, 31632), (63, 31674), (68, 31704), (79, 31752), (93, 31854), (96, 31866), (98, 31941), (107, 32037), (110, 32067), (113, 32085), (114, 32121), (126, 32223),

Gene: Imvubu_25 Start: 28919, Stop: 30094, Start Num: 6

Candidate Starts for Imvubu_25:

(Start: 6 @28919 has 7 MA's), (11, 29009), (14, 29036), (16, 29057), (23, 29117), (24, 29126), (30, 29165), (34, 29174), (36, 29192), (42, 29225), (52, 29285), (63, 29354), (66, 29372), (73, 29399), (76, 29414), (78, 29426), (93, 29534), (122, 29858), (129, 29933), (130, 29954), (131, 29984), (135, 30071),

Gene: Indlovu_29 Start: 31250, Stop: 32386, Start Num: 6

Candidate Starts for Indlovu_29:

(3, 31217), (Start: 6 @31250 has 7 MA's), (14, 31367), (23, 31448), (25, 31463), (30, 31496), (34, 31505), (44, 31565), (47, 31595), (53, 31619), (74, 31736), (96, 31877), (103, 31985), (108, 32042),

Gene: JustASigh_22 Start: 22794, Stop: 23885, Start Num: 4

Candidate Starts for JustASigh_22:

(2, 22689), (Start: 4 @22794 has 2 MA's), (32, 23058), (56, 23202), (58, 23211), (83, 23322), (106, 23547), (133, 23841), (135, 23862),

Gene: Knocker_33 Start: 33872, Stop: 35014, Start Num: 6

Candidate Starts for Knocker_33:

(Start: 6 @33872 has 7 MA's), (14, 33989), (17, 34016), (19, 34025), (22, 34049), (23, 34070), (24, 34079), (29, 34103), (30, 34118), (32, 34121), (34, 34127), (42, 34178), (44, 34187), (45, 34205), (47, 34217), (48, 34220), (53, 34241), (62, 34292), (63, 34307), (64, 34319), (71, 34343), (73, 34352), (78, 34379), (79, 34385), (89, 34445), (91, 34457), (93, 34487), (96, 34499), (98, 34574), (104, 34658), (107, 34670), (110, 34700), (113, 34718), (121, 34799), (123, 34826), (124, 34829), (125, 34838),

Gene: MrMagoo_35 Start: 27841, Stop: 28923, Start Num: 13

Candidate Starts for MrMagoo_35:

(12, 27835), (Start: 13 @27841 has 6 MA's), (21, 27916), (26, 27961), (27, 27967), (28, 27973), (30, 27991), (39, 28036), (41, 28051), (44, 28066), (46, 28090), (51, 28111), (61, 28165), (62, 28171), (64, 28201), (72, 28234), (90, 28345), (93, 28381), (134, 28879),

Gene: PenguinLover67_33 Start: 33434, Stop: 34648, Start Num: 6

Candidate Starts for PenguinLover67_33:

(Start: 6 @33434 has 7 MA's), (16, 33572), (23, 33632), (30, 33680), (32, 33683), (38, 33719), (42, 33740), (47, 33779), (53, 33803), (60, 33842), (64, 33881), (69, 33902), (74, 33920), (75, 33923), (98, 34136), (99, 34139), (103, 34184), (127, 34478),

Gene: Quesadilla_32 Start: 33335, Stop: 34516, Start Num: 6

Candidate Starts for Quesadilla_32:

(3, 33302), (Start: 6 @33335 has 7 MA's), (14, 33452), (15, 33467), (16, 33473), (23, 33533), (30, 33581), (35, 33605), (44, 33650), (50, 33689), (52, 33701), (54, 33710), (57, 33728), (63, 33770), (65, 33785), (75, 33824), (76, 33830), (84, 33875), (85, 33881), (92, 33926), (100, 34028),

Gene: Rem711_30 Start: 25189, Stop: 26352, Start Num: 4

Candidate Starts for Rem711_30:

(Start: 4 @25189 has 2 MA's), (31, 25450), (43, 25510), (49, 25555), (53, 25573), (59, 25609), (83, 25717), (87, 25732), (94, 25789), (105, 25951), (118, 26101),

Gene: Rey_35 Start: 28073, Stop: 29155, Start Num: 13

Candidate Starts for Rey_35:

(12, 28067), (Start: 13 @28073 has 6 MA's), (21, 28148), (26, 28193), (28, 28205), (30, 28223), (33, 28232), (41, 28283), (44, 28298), (46, 28322), (51, 28343), (62, 28403), (95, 28622), (130, 29024),

Gene: Thonko_30 Start: 29614, Stop: 30771, Start Num: 6

Candidate Starts for Thonko_30:

(3, 29584), (Start: 6 @29614 has 7 MA's), (14, 29728), (29, 29845), (30, 29860), (34, 29869), (36, 29887), (40, 29905), (47, 29959), (63, 30049), (66, 30067), (71, 30085), (97, 30319), (98, 30328), (102, 30370), (111, 30460), (113, 30472),

Gene: Zenteno07_35 Start: 31167, Stop: 32306, Start Num: 5

Candidate Starts for Zenteno07_35:

(1, 30954), (Start: 5 @31167 has 1 MA's), (8, 31209), (10, 31257), (14, 31287), (16, 31308), (23, 31368), (30, 31416), (32, 31419), (34, 31425), (37, 31452), (42, 31476), (44, 31485), (52, 31536), (74, 31656), (77, 31674), (99, 31860), (103, 31905), (111, 31989), (113, 32001), (115, 32040), (123, 32118),