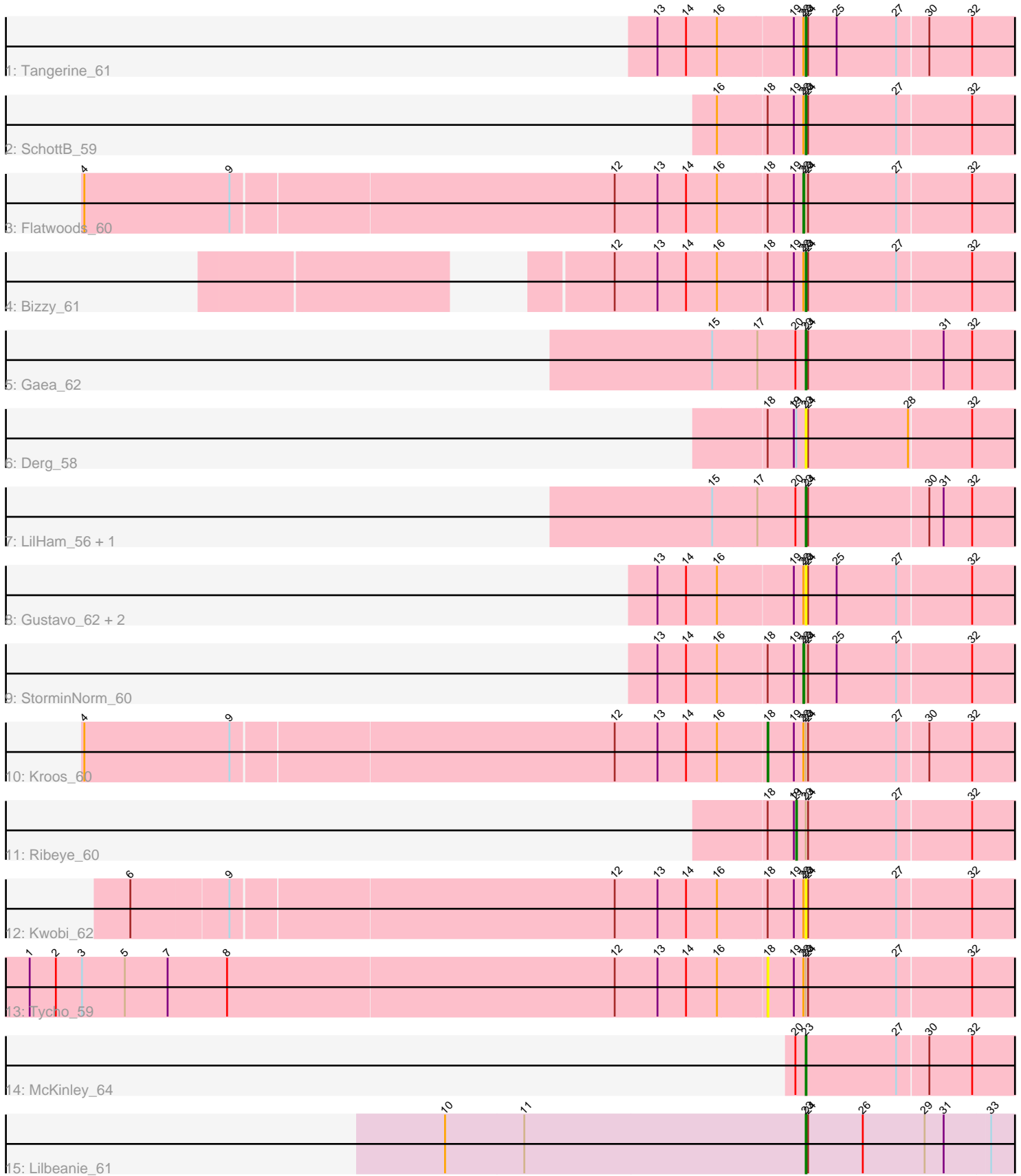


Pham 194389



Note: Tracks are now grouped by subcluster and scaled. Switching in subcluster is indicated by changes in track color. Track scale is now set by default to display the region 30 bp upstream of start 1 to 30 bp downstream of the last possible start. If this default region is judged to be packed too tightly with annotated starts, the track will be further scaled to only show that region of the ORF with annotated starts. This action will be indicated by adding "Zoomed" to the title. For starts, yellow indicates the location of called starts comprised solely of Glimmer/GeneMark auto-annotations, green indicates the location of called starts with at least 1 manual gene annotation.

Pham 194389 Report

This analysis was run 11/02/24 on database version 579.

Pham number 194389 has 18 members, 7 are drafts.

Phages represented in each track:

- Track 1 : Tangerine_61
- Track 2 : SchottB_59
- Track 3 : Flatwoods_60
- Track 4 : Bizzy_61
- Track 5 : Gaea_62
- Track 6 : Derg_58
- Track 7 : LilHam_56, Ashertheman_62
- Track 8 : Gustavo_62, Saronaya_62, Baumdotcom_58
- Track 9 : StorminNorm_60
- Track 10 : Kroos_60
- Track 11 : Ribeye_60
- Track 12 : Kwobi_62
- Track 13 : Tycho_59
- Track 14 : McKinley_64
- Track 15 : Lilbeanie_61

Summary of Final Annotations (See graph section above for start numbers):

The start number called the most often in the published annotations is 23, it was called in 7 of the 11 non-draft genes in the pham.

Genes that call this "Most Annotated" start:

- Ashertheman_62, Baumdotcom_58, Bizzy_61, Derg_58, Gaea_62, Gustavo_62, Kwobi_62, LilHam_56, Lilbeanie_61, McKinley_64, Saronaya_62, SchottB_59, Tangerine_61,

Genes that have the "Most Annotated" start but do not call it:

- Flatwoods_60, Kroos_60, Ribeye_60, StorminNorm_60, Tycho_59,

Genes that do not have the "Most Annotated" start:

-

Summary by start number:

Start 18:

- Found in 9 of 18 (50.0%) of genes in pham
- Manual Annotations of this start: 1 of 11
- Called 22.2% of time when present
- Phage (with cluster) where this start called: Kroos_60 (DE1), Tycho_59 (DE1),

Start 21:

- Found in 2 of 18 (11.1%) of genes in pham
- Manual Annotations of this start: 1 of 11
- Called 50.0% of time when present
- Phage (with cluster) where this start called: Ribeye_60 (DE1),

Start 22:

- Found in 11 of 18 (61.1%) of genes in pham
- Manual Annotations of this start: 2 of 11
- Called 18.2% of time when present
- Phage (with cluster) where this start called: Flatwoods_60 (DE1), StorminNorm_60 (DE1),

Start 23:

- Found in 18 of 18 (100.0%) of genes in pham
- Manual Annotations of this start: 7 of 11
- Called 72.2% of time when present
- Phage (with cluster) where this start called: Ashertheman_62 (DE1), Baumdotcom_58 (DE1), Bizzy_61 (DE1), Derg_58 (DE1), Gaea_62 (DE1), Gustavo_62 (DE1), Kwobi_62 (DE1), LilHam_56 (DE1), Lilbeanie_61 (DE5), McKinley_64 (DE1), Saronaya_62 (DE1), SchottB_59 (DE1), Tangerine_61 (DE1),

Summary by clusters:

There are 2 clusters represented in this pham: DE1, DE5,

Info for manual annotations of cluster DE1:

- Start number 18 was manually annotated 1 time for cluster DE1.
- Start number 21 was manually annotated 1 time for cluster DE1.
- Start number 22 was manually annotated 2 times for cluster DE1.
- Start number 23 was manually annotated 6 times for cluster DE1.

Info for manual annotations of cluster DE5:

- Start number 23 was manually annotated 1 time for cluster DE5.

Gene Information:

Gene: Ashertheman_62 Start: 48524, Stop: 48796, Start Num: 23

Candidate Starts for Ashertheman_62:

(15, 48410), (17, 48464), (20, 48512), (Start: 23 @48524 has 7 MA's), (24, 48527), (30, 48674), (31, 48692), (32, 48728),

Gene: Baumdotcom_58 Start: 48035, Stop: 48307, Start Num: 23

Candidate Starts for Baumdotcom_58:

(13, 47855), (14, 47891), (16, 47930), (19, 48020), (Start: 22 @48032 has 2 MA's), (Start: 23 @48035 has 7 MA's), (24, 48038), (25, 48074), (27, 48149), (32, 48239),

Gene: Bizzy_61 Start: 48138, Stop: 48410, Start Num: 23

Candidate Starts for Bizzy_61:

(12, 47904), (13, 47958), (14, 47994), (16, 48033), (Start: 18 @48090 has 1 MA's), (19, 48123), (Start: 22 @48135 has 2 MA's), (Start: 23 @48138 has 7 MA's), (24, 48141), (27, 48252), (32, 48342),

Gene: Derg_58 Start: 46968, Stop: 47240, Start Num: 23

Candidate Starts for Derg_58:

(Start: 18 @46920 has 1 MA's), (19, 46953), (Start: 21 @46956 has 1 MA's), (Start: 23 @46968 has 7 MA's), (24, 46971), (28, 47097), (32, 47172),

Gene: Flatwoods_60 Start: 47605, Stop: 47880, Start Num: 22

Candidate Starts for Flatwoods_60:

(4, 46717), (9, 46900), (12, 47374), (13, 47428), (14, 47464), (16, 47503), (Start: 18 @47560 has 1 MA's), (19, 47593), (Start: 22 @47605 has 2 MA's), (Start: 23 @47608 has 7 MA's), (24, 47611), (27, 47722), (32, 47812),

Gene: Gaea_62 Start: 48297, Stop: 48569, Start Num: 23

Candidate Starts for Gaea_62:

(15, 48183), (17, 48237), (20, 48285), (Start: 23 @48297 has 7 MA's), (24, 48300), (31, 48465), (32, 48501),

Gene: Gustavo_62 Start: 48964, Stop: 49236, Start Num: 23

Candidate Starts for Gustavo_62:

(13, 48784), (14, 48820), (16, 48859), (19, 48949), (Start: 22 @48961 has 2 MA's), (Start: 23 @48964 has 7 MA's), (24, 48967), (25, 49003), (27, 49078), (32, 49168),

Gene: Kroos_60 Start: 48657, Stop: 48977, Start Num: 18

Candidate Starts for Kroos_60:

(4, 47814), (9, 47997), (12, 48471), (13, 48525), (14, 48561), (16, 48600), (Start: 18 @48657 has 1 MA's), (19, 48690), (Start: 22 @48702 has 2 MA's), (Start: 23 @48705 has 7 MA's), (24, 48708), (27, 48819), (30, 48855), (32, 48909),

Gene: Kwobi_62 Start: 49106, Stop: 49378, Start Num: 23

Candidate Starts for Kwobi_62:

(6, 48278), (9, 48398), (12, 48872), (13, 48926), (14, 48962), (16, 49001), (Start: 18 @49058 has 1 MA's), (19, 49091), (Start: 22 @49103 has 2 MA's), (Start: 23 @49106 has 7 MA's), (24, 49109), (27, 49220), (32, 49310),

Gene: LilHam_56 Start: 46247, Stop: 46519, Start Num: 23

Candidate Starts for LilHam_56:

(15, 46133), (17, 46187), (20, 46235), (Start: 23 @46247 has 7 MA's), (24, 46250), (30, 46397), (31, 46415), (32, 46451),

Gene: Lilbeanie_61 Start: 43535, Stop: 43810, Start Num: 23

Candidate Starts for Lilbeanie_61:

(10, 43082), (11, 43181), (Start: 23 @43535 has 7 MA's), (24, 43538), (26, 43607), (29, 43685), (31, 43709), (33, 43766),

Gene: McKinley_64 Start: 49837, Stop: 50109, Start Num: 23

Candidate Starts for McKinley_64:

(20, 49825), (Start: 23 @49837 has 7 MA's), (27, 49951), (30, 49987), (32, 50041),

Gene: Ribeye_60 Start: 48019, Stop: 48303, Start Num: 21

Candidate Starts for Ribeye_60:

(Start: 18 @47983 has 1 MA's), (19, 48016), (Start: 21 @48019 has 1 MA's), (Start: 23 @48031 has 7 MA's), (24, 48034), (27, 48145), (32, 48235),

Gene: Saronaya_62 Start: 48964, Stop: 49236, Start Num: 23

Candidate Starts for Saronaya_62:

(13, 48784), (14, 48820), (16, 48859), (19, 48949), (Start: 22 @48961 has 2 MA's), (Start: 23 @48964 has 7 MA's), (24, 48967), (25, 49003), (27, 49078), (32, 49168),

Gene: SchottB_59 Start: 48874, Stop: 49146, Start Num: 23

Candidate Starts for SchottB_59:

(16, 48769), (Start: 18 @48826 has 1 MA's), (19, 48859), (Start: 22 @48871 has 2 MA's), (Start: 23 @48874 has 7 MA's), (24, 48877), (27, 48988), (32, 49078),

Gene: StorminNorm_60 Start: 48603, Stop: 48878, Start Num: 22

Candidate Starts for StorminNorm_60:

(13, 48426), (14, 48462), (16, 48501), (Start: 18 @48558 has 1 MA's), (19, 48591), (Start: 22 @48603 has 2 MA's), (Start: 23 @48606 has 7 MA's), (24, 48609), (25, 48645), (27, 48720), (32, 48810),

Gene: Tangerine_61 Start: 48357, Stop: 48629, Start Num: 23

Candidate Starts for Tangerine_61:

(13, 48177), (14, 48213), (16, 48252), (19, 48342), (Start: 22 @48354 has 2 MA's), (Start: 23 @48357 has 7 MA's), (24, 48360), (25, 48396), (27, 48471), (30, 48507), (32, 48561),

Gene: Tycho_59 Start: 48079, Stop: 48399, Start Num: 18

Candidate Starts for Tycho_59:

(1, 47158), (2, 47191), (3, 47224), (5, 47278), (7, 47332), (8, 47407), (12, 47893), (13, 47947), (14, 47983), (16, 48022), (Start: 18 @48079 has 1 MA's), (19, 48112), (Start: 22 @48124 has 2 MA's), (Start: 23 @48127 has 7 MA's), (24, 48130), (27, 48241), (32, 48331),