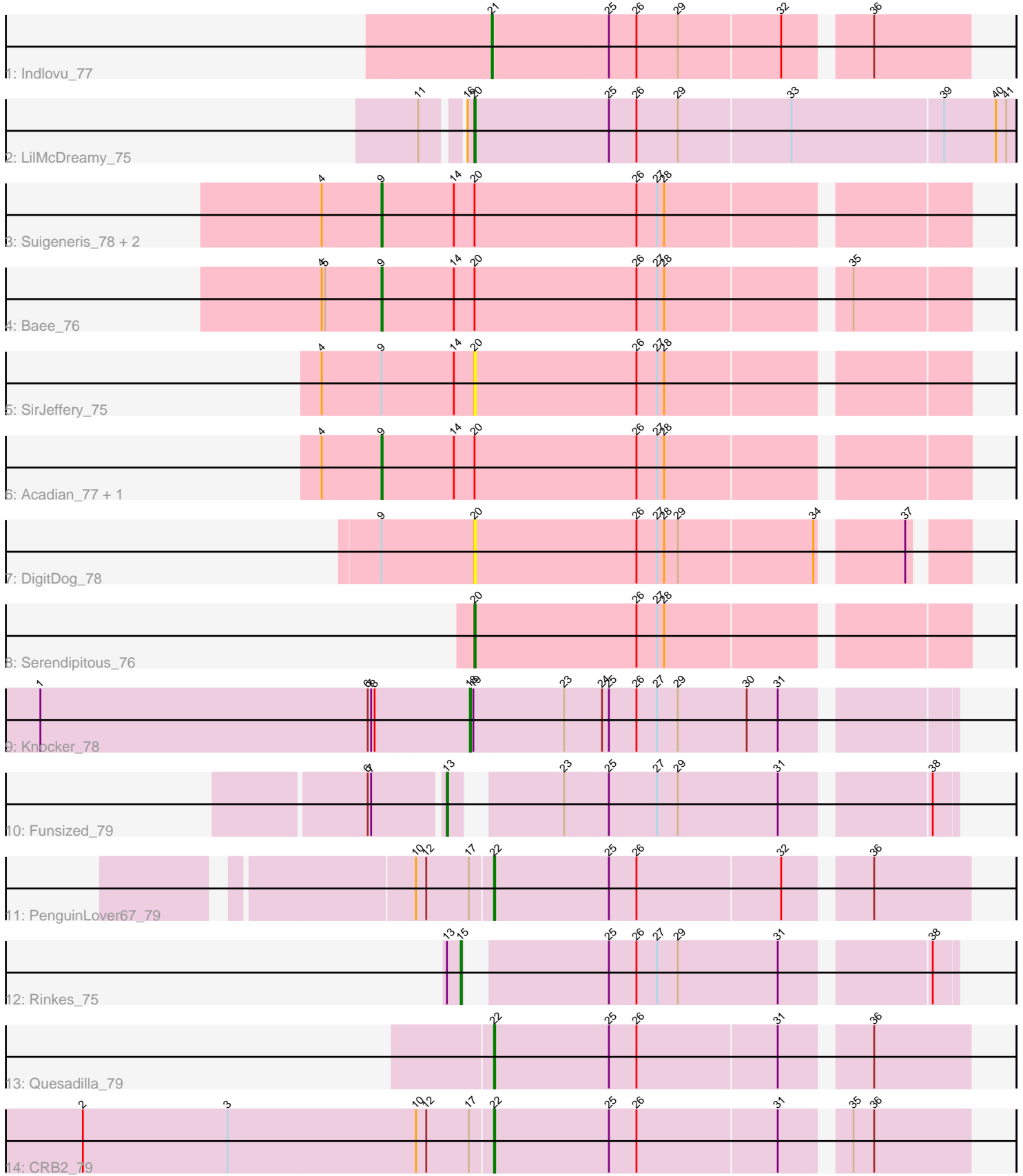


Pham 194396



Note: Tracks are now grouped by subcluster and scaled. Switching in subcluster is indicated by changes in track color. Track scale is now set by default to display the region 30 bp upstream of start 1 to 30 bp downstream of the last possible start. If this default region is judged to be packed too tightly with annotated starts, the track will be further scaled to only show that region of the ORF with annotated starts. This action will be indicated by adding "Zoomed" to the title. For starts, yellow indicates the location of called starts comprised solely of Glimmer/GeneMark auto-annotations, green indicates the location of called starts with at least 1 manual gene annotation.

Pham 194396 Report

This analysis was run 11/02/24 on database version 579.

Pham number 194396 has 17 members, 2 are drafts.

Phages represented in each track:

- Track 1 : Indlovu_77
- Track 2 : LilMcDreamy_75
- Track 3 : Suigeneris_78, Rich_75, Donny_78
- Track 4 : Bae_76
- Track 5 : SirJeffery_75
- Track 6 : Acadian_77, EastView9101_76
- Track 7 : DigitDog_78
- Track 8 : Serendipitous_76
- Track 9 : Knocker_78
- Track 10 : Funsized_79
- Track 11 : PenguinLover67_79
- Track 12 : Rinkes_75
- Track 13 : Quesadilla_79
- Track 14 : CRB2_79

Summary of Final Annotations (See graph section above for start numbers):

The start number called the most often in the published annotations is 9, it was called in 6 of the 15 non-draft genes in the pham.

Genes that call this "Most Annotated" start:

- Acadian_77, Bae_76, Donny_78, EastView9101_76, Rich_75, Suigeneris_78,

Genes that have the "Most Annotated" start but do not call it:

- DigitDog_78, SirJeffery_75,

Genes that do not have the "Most Annotated" start:

- CRB2_79, Funsized_79, Indlovu_77, Knocker_78, LilMcDreamy_75, PenguinLover67_79, Quesadilla_79, Rinkes_75, Serendipitous_76,

Summary by start number:

Start 9:

- Found in 8 of 17 (47.1%) of genes in pham

- Manual Annotations of this start: 6 of 15
- Called 75.0% of time when present
- Phage (with cluster) where this start called: Acadian_77 (B5), Bae_76 (B5), Donny_78 (B5), EastView9101_76 (B5), Rich_75 (B5), Suigeneris_78 (B5),

Start 13:

- Found in 2 of 17 (11.8%) of genes in pham
- Manual Annotations of this start: 1 of 15
- Called 50.0% of time when present
- Phage (with cluster) where this start called: Funsized_79 (B9),

Start 15:

- Found in 1 of 17 (5.9%) of genes in pham
- Manual Annotations of this start: 1 of 15
- Called 100.0% of time when present
- Phage (with cluster) where this start called: Rinkes_75 (B9),

Start 18:

- Found in 1 of 17 (5.9%) of genes in pham
- Manual Annotations of this start: 1 of 15
- Called 100.0% of time when present
- Phage (with cluster) where this start called: Knocker_78 (B9),

Start 20:

- Found in 10 of 17 (58.8%) of genes in pham
- Manual Annotations of this start: 2 of 15
- Called 40.0% of time when present
- Phage (with cluster) where this start called: DigitDog_78 (B5), LilMcDreamy_75 (B12), Serendipitous_76 (B5), SirJeffery_75 (B5),

Start 21:

- Found in 1 of 17 (5.9%) of genes in pham
- Manual Annotations of this start: 1 of 15
- Called 100.0% of time when present
- Phage (with cluster) where this start called: Indlovu_77 (B11),

Start 22:

- Found in 3 of 17 (17.6%) of genes in pham
- Manual Annotations of this start: 3 of 15
- Called 100.0% of time when present
- Phage (with cluster) where this start called: CRB2_79 (B9), PenguinLover67_79 (B9), Quesadilla_79 (B9),

Summary by clusters:

There are 4 clusters represented in this pham: B5, B12, B9, B11,

Info for manual annotations of cluster B11:

- Start number 21 was manually annotated 1 time for cluster B11.

Info for manual annotations of cluster B12:

- Start number 20 was manually annotated 1 time for cluster B12.

Info for manual annotations of cluster B5:

- Start number 9 was manually annotated 6 times for cluster B5.
- Start number 20 was manually annotated 1 time for cluster B5.

Info for manual annotations of cluster B9:

- Start number 13 was manually annotated 1 time for cluster B9.
- Start number 15 was manually annotated 1 time for cluster B9.
- Start number 18 was manually annotated 1 time for cluster B9.
- Start number 22 was manually annotated 3 times for cluster B9.

Gene Information:

Gene: Acadian_77 Start: 62254, Stop: 61766, Start Num: 9

Candidate Starts for Acadian_77:

(4, 62305), (Start: 9 @62254 has 6 MA's), (14, 62191), (Start: 20 @62173 has 2 MA's), (26, 62032), (27, 62014), (28, 62008),

Gene: Bae_76 Start: 62953, Stop: 62465, Start Num: 9

Candidate Starts for Bae_76:

(4, 63004), (5, 63001), (Start: 9 @62953 has 6 MA's), (14, 62890), (Start: 20 @62872 has 2 MA's), (26, 62731), (27, 62713), (28, 62707), (35, 62563),

Gene: CRB2_79 Start: 65196, Stop: 64804, Start Num: 22

Candidate Starts for CRB2_79:

(2, 65547), (3, 65421), (10, 65259), (12, 65250), (17, 65214), (Start: 22 @65196 has 3 MA's), (25, 65097), (26, 65073), (31, 64953), (35, 64905), (36, 64887),

Gene: DigitDog_78 Start: 62457, Stop: 62062, Start Num: 20

Candidate Starts for DigitDog_78:

(Start: 9 @62538 has 6 MA's), (Start: 20 @62457 has 2 MA's), (26, 62316), (27, 62298), (28, 62292), (29, 62280), (34, 62166), (37, 62103),

Gene: Donny_78 Start: 62294, Stop: 61806, Start Num: 9

Candidate Starts for Donny_78:

(4, 62345), (Start: 9 @62294 has 6 MA's), (14, 62231), (Start: 20 @62213 has 2 MA's), (26, 62072), (27, 62054), (28, 62048),

Gene: EastView9101_76 Start: 61998, Stop: 61510, Start Num: 9

Candidate Starts for EastView9101_76:

(4, 62049), (Start: 9 @61998 has 6 MA's), (14, 61935), (Start: 20 @61917 has 2 MA's), (26, 61776), (27, 61758), (28, 61752),

Gene: Funsized_79 Start: 65641, Stop: 65243, Start Num: 13

Candidate Starts for Funsized_79:

(6, 65701), (7, 65698), (Start: 13 @65641 has 1 MA's), (23, 65563), (25, 65524), (27, 65482), (29, 65464), (31, 65377), (38, 65263),

Gene: Indlovu_77 Start: 63524, Stop: 63132, Start Num: 21

Candidate Starts for Indlovu_77:

(Start: 21 @63524 has 1 MA's), (25, 63425), (26, 63401), (29, 63365), (32, 63278), (36, 63215),

Gene: Knocker_78 Start: 64121, Stop: 63720, Start Num: 18

Candidate Starts for Knocker_78:

(1, 64493), (6, 64208), (7, 64205), (8, 64202), (Start: 18 @64121 has 1 MA's), (19, 64118), (23, 64040), (24, 64007), (25, 64001), (26, 63977), (27, 63959), (29, 63941), (30, 63881), (31, 63854),

Gene: LilMcDreamy_75 Start: 62248, Stop: 61784, Start Num: 20

Candidate Starts for LilMcDreamy_75:

(11, 62284), (16, 62254), (Start: 20 @62248 has 2 MA's), (25, 62131), (26, 62107), (29, 62071), (33, 61975), (39, 61846), (40, 61801), (41, 61792),

Gene: PenguinLover67_79 Start: 62948, Stop: 62556, Start Num: 22

Candidate Starts for PenguinLover67_79:

(10, 63011), (12, 63002), (17, 62966), (Start: 22 @62948 has 3 MA's), (25, 62849), (26, 62825), (32, 62702), (36, 62639),

Gene: Quesadilla_79 Start: 63413, Stop: 63021, Start Num: 22

Candidate Starts for Quesadilla_79:

(Start: 22 @63413 has 3 MA's), (25, 63314), (26, 63290), (31, 63170), (36, 63104),

Gene: Rich_75 Start: 62998, Stop: 62510, Start Num: 9

Candidate Starts for Rich_75:

(4, 63049), (Start: 9 @62998 has 6 MA's), (14, 62935), (Start: 20 @62917 has 2 MA's), (26, 62776), (27, 62758), (28, 62752),

Gene: Rinkes_75 Start: 63331, Stop: 62945, Start Num: 15

Candidate Starts for Rinkes_75:

(Start: 13 @63343 has 1 MA's), (Start: 15 @63331 has 1 MA's), (25, 63226), (26, 63202), (27, 63184), (29, 63166), (31, 63079), (38, 62965),

Gene: Serendipitous_76 Start: 61875, Stop: 61468, Start Num: 20

Candidate Starts for Serendipitous_76:

(Start: 20 @61875 has 2 MA's), (26, 61734), (27, 61716), (28, 61710),

Gene: SirJeffery_75 Start: 61957, Stop: 61550, Start Num: 20

Candidate Starts for SirJeffery_75:

(4, 62089), (Start: 9 @62038 has 6 MA's), (14, 61975), (Start: 20 @61957 has 2 MA's), (26, 61816), (27, 61798), (28, 61792),

Gene: Suigeneris_78 Start: 62476, Stop: 61988, Start Num: 9

Candidate Starts for Suigeneris_78:

(4, 62527), (Start: 9 @62476 has 6 MA's), (14, 62413), (Start: 20 @62395 has 2 MA's), (26, 62254), (27, 62236), (28, 62230),