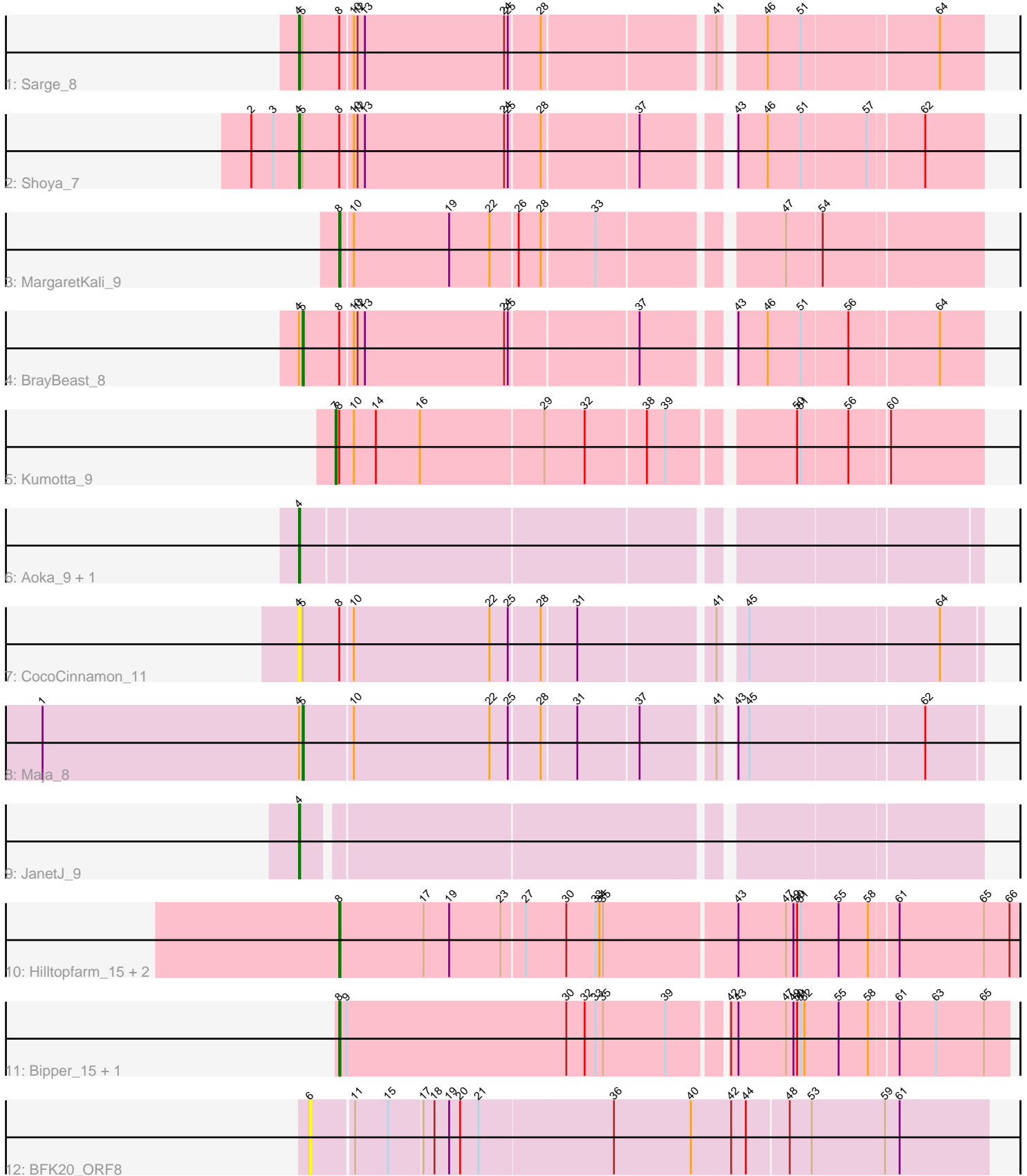


# Pham 194419



Note: Tracks are now grouped by subcluster and scaled. Switching in subcluster is indicated by changes in track color. Track scale is now set by default to display the region 30 bp upstream of start 1 to 30 bp downstream of the last possible start. If this default region is judged to be packed too tightly with annotated starts, the track will be further scaled to only show that region of the ORF with annotated starts. This action will be indicated by adding "Zoomed" to the title. For starts, yellow indicates the location of called starts comprised solely of Glimmer/GeneMark auto-annotations, green indicates the location of called starts with at least 1 manual gene annotation.

## Pham 194419 Report

This analysis was run 11/02/24 on database version 579.

Pham number 194419 has 16 members, 4 are drafts.

Phages represented in each track:

- Track 1 : Sarge\_8
- Track 2 : Shoya\_7
- Track 3 : MargaretKali\_9
- Track 4 : BrayBeast\_8
- Track 5 : Kumotta\_9
- Track 6 : Aoka\_9, EvenBluerMoon\_10
- Track 7 : CocoCinnamon\_11
- Track 8 : Maja\_8
- Track 9 : JanetJ\_9
- Track 10 : Hilltopfarm\_15, Typha\_15, AuntGwenStacy\_15
- Track 11 : Bipper\_15, Cracklewink\_15
- Track 12 : BFK20\_ORF8

### ***Summary of Final Annotations (See graph section above for start numbers):***

The start number called the most often in the published annotations is 8, it was called in 5 of the 12 non-draft genes in the pham.

Genes that call this "Most Annotated" start:

- AuntGwenStacy\_15, Bipper\_15, Cracklewink\_15, Hilltopfarm\_15, MargaretKali\_9, Typha\_15,

Genes that have the "Most Annotated" start but do not call it:

- BrayBeast\_8, CocoCinnamon\_11, Kumotta\_9, Sarge\_8, Shoya\_7,

Genes that do not have the "Most Annotated" start:

- Aoka\_9, BFK20\_ORF8, EvenBluerMoon\_10, JanetJ\_9, Maja\_8,

### **Summary by start number:**

Start 4:

- Found in 8 of 16 ( 50.0% ) of genes in pham
- Manual Annotations of this start: 4 of 12
- Called 75.0% of time when present

- Phage (with cluster) where this start called: Aoka\_9 (FO), CocoCinnamon\_11 (FO), EvenBluerMoon\_10 (FO), JanetJ\_9 (FO), Sarge\_8 (FB), Shoya\_7 (FB),

Start 5:

- Found in 5 of 16 ( 31.2% ) of genes in pham
- Manual Annotations of this start: 2 of 12
- Called 40.0% of time when present
- Phage (with cluster) where this start called: BrayBeast\_8 (FB), Maja\_8 (FO),

Start 6:

- Found in 1 of 16 ( 6.2% ) of genes in pham
- No Manual Annotations of this start.
- Called 100.0% of time when present
- Phage (with cluster) where this start called: BFK20\_ORF8 (singleton),

Start 7:

- Found in 1 of 16 ( 6.2% ) of genes in pham
- Manual Annotations of this start: 1 of 12
- Called 100.0% of time when present
- Phage (with cluster) where this start called: Kumotta\_9 (FB),

Start 8:

- Found in 11 of 16 ( 68.8% ) of genes in pham
- Manual Annotations of this start: 5 of 12
- Called 54.5% of time when present
- Phage (with cluster) where this start called: AuntGwenStacy\_15 (Y), Bipper\_15 (Y), Cracklewink\_15 (Y), Hilltopfarm\_15 (Y), MargaretKali\_9 (FB), Typha\_15 (Y),

### **Summary by clusters:**

There are 4 clusters represented in this pham: Y, FB, singleton, FO,

Info for manual annotations of cluster FB:

- Start number 4 was manually annotated 2 times for cluster FB.
- Start number 5 was manually annotated 1 time for cluster FB.
- Start number 7 was manually annotated 1 time for cluster FB.
- Start number 8 was manually annotated 1 time for cluster FB.

Info for manual annotations of cluster FO:

- Start number 4 was manually annotated 2 times for cluster FO.
- Start number 5 was manually annotated 1 time for cluster FO.

Info for manual annotations of cluster Y:

- Start number 8 was manually annotated 4 times for cluster Y.

### **Gene Information:**

Gene: Aoka\_9 Start: 7589, Stop: 8104, Start Num: 4

Candidate Starts for Aoka\_9:

(Start: 4 @7589 has 4 MA's),

Gene: AuntGwenStacy\_15 Start: 10833, Stop: 11375, Start Num: 8

Candidate Starts for AuntGwenStacy\_15:

(Start: 8 @10833 has 5 MA's), (17, 10902), (19, 10923), (23, 10965), (27, 10983), (30, 11016), (33, 11040), (34, 11043), (35, 11046), (43, 11151), (47, 11190), (49, 11196), (50, 11199), (51, 11202), (55, 11232), (58, 11256), (61, 11277), (65, 11346), (66, 11367),

Gene: BFK20\_ORF8 Start: 6306, Stop: 6848, Start Num: 6

Candidate Starts for BFK20\_ORF8:

(6, 6306), (11, 6339), (15, 6366), (17, 6393), (18, 6402), (19, 6414), (20, 6423), (21, 6438), (36, 6546), (40, 6609), (42, 6642), (44, 6654), (48, 6687), (53, 6705), (59, 6765), (61, 6777),

Gene: Bipper\_15 Start: 10931, Stop: 11461, Start Num: 8

Candidate Starts for Bipper\_15:

(Start: 8 @10931 has 5 MA's), (9, 10937), (30, 11117), (32, 11132), (33, 11141), (35, 11147), (39, 11198), (42, 11240), (43, 11246), (47, 11285), (49, 11291), (50, 11294), (51, 11297), (52, 11300), (55, 11327), (58, 11351), (61, 11372), (63, 11402), (65, 11441),

Gene: BrayBeast\_8 Start: 6486, Stop: 7001, Start Num: 5

Candidate Starts for BrayBeast\_8:

(Start: 4 @6483 has 4 MA's), (Start: 5 @6486 has 2 MA's), (Start: 8 @6516 has 5 MA's), (10, 6525), (12, 6528), (13, 6534), (24, 6648), (25, 6651), (37, 6750), (43, 6810), (46, 6834), (51, 6861), (56, 6897), (64, 6966),

Gene: CocoCinnamon\_11 Start: 7690, Stop: 8205, Start Num: 4

Candidate Starts for CocoCinnamon\_11:

(Start: 4 @7690 has 4 MA's), (Start: 5 @7693 has 2 MA's), (Start: 8 @7723 has 5 MA's), (10, 7732), (22, 7843), (25, 7858), (28, 7882), (31, 7909), (41, 8011), (45, 8026), (64, 8173),

Gene: Cracklewink\_15 Start: 10931, Stop: 11461, Start Num: 8

Candidate Starts for Cracklewink\_15:

(Start: 8 @10931 has 5 MA's), (9, 10937), (30, 11117), (32, 11132), (33, 11141), (35, 11147), (39, 11198), (42, 11240), (43, 11246), (47, 11285), (49, 11291), (50, 11294), (51, 11297), (52, 11300), (55, 11327), (58, 11351), (61, 11372), (63, 11402), (65, 11441),

Gene: EvenBluerMoon\_10 Start: 7623, Stop: 8138, Start Num: 4

Candidate Starts for EvenBluerMoon\_10:

(Start: 4 @7623 has 4 MA's),

Gene: Hilltopfarm\_15 Start: 10863, Stop: 11405, Start Num: 8

Candidate Starts for Hilltopfarm\_15:

(Start: 8 @10863 has 5 MA's), (17, 10932), (19, 10953), (23, 10995), (27, 11013), (30, 11046), (33, 11070), (34, 11073), (35, 11076), (43, 11181), (47, 11220), (49, 11226), (50, 11229), (51, 11232), (55, 11262), (58, 11286), (61, 11307), (65, 11376), (66, 11397),

Gene: JanetJ\_9 Start: 7405, Stop: 7920, Start Num: 4

Candidate Starts for JanetJ\_9:

(Start: 4 @7405 has 4 MA's),

Gene: Kumotta\_9 Start: 7342, Stop: 7839, Start Num: 7

Candidate Starts for Kumotta\_9:

(Start: 7 @7342 has 1 MA's), (Start: 8 @7345 has 5 MA's), (10, 7357), (14, 7375), (16, 7411), (29, 7510), (32, 7543), (38, 7591), (39, 7606), (50, 7696), (51, 7699), (56, 7735), (60, 7765),

Gene: Maja\_8 Start: 6915, Stop: 7427, Start Num: 5

Candidate Starts for Maja\_8:

(1, 6702), (Start: 4 @6912 has 4 MA's), (Start: 5 @6915 has 2 MA's), (10, 6954), (22, 7065), (25, 7080), (28, 7104), (31, 7131), (37, 7179), (41, 7233), (43, 7239), (45, 7248), (62, 7383),

Gene: MargaretKali\_9 Start: 6988, Stop: 7473, Start Num: 8

Candidate Starts for MargaretKali\_9:

(Start: 8 @6988 has 5 MA's), (10, 6997), (19, 7075), (22, 7108), (26, 7129), (28, 7147), (33, 7189), (47, 7321), (54, 7348),

Gene: Sarge\_8 Start: 6394, Stop: 6912, Start Num: 4

Candidate Starts for Sarge\_8:

(Start: 4 @6394 has 4 MA's), (Start: 5 @6397 has 2 MA's), (Start: 8 @6427 has 5 MA's), (10, 6436), (12, 6439), (13, 6445), (24, 6559), (25, 6562), (28, 6586), (41, 6715), (46, 6745), (51, 6772), (64, 6877),

Gene: Shoya\_7 Start: 6030, Stop: 6548, Start Num: 4

Candidate Starts for Shoya\_7:

(2, 5991), (3, 6009), (Start: 4 @6030 has 4 MA's), (Start: 5 @6033 has 2 MA's), (Start: 8 @6063 has 5 MA's), (10, 6072), (12, 6075), (13, 6081), (24, 6195), (25, 6198), (28, 6222), (37, 6297), (43, 6357), (46, 6381), (51, 6408), (57, 6459), (62, 6501),

Gene: Typha\_15 Start: 10833, Stop: 11375, Start Num: 8

Candidate Starts for Typha\_15:

(Start: 8 @10833 has 5 MA's), (17, 10902), (19, 10923), (23, 10965), (27, 10983), (30, 11016), (33, 11040), (34, 11043), (35, 11046), (43, 11151), (47, 11190), (49, 11196), (50, 11199), (51, 11202), (55, 11232), (58, 11256), (61, 11277), (65, 11346), (66, 11367),