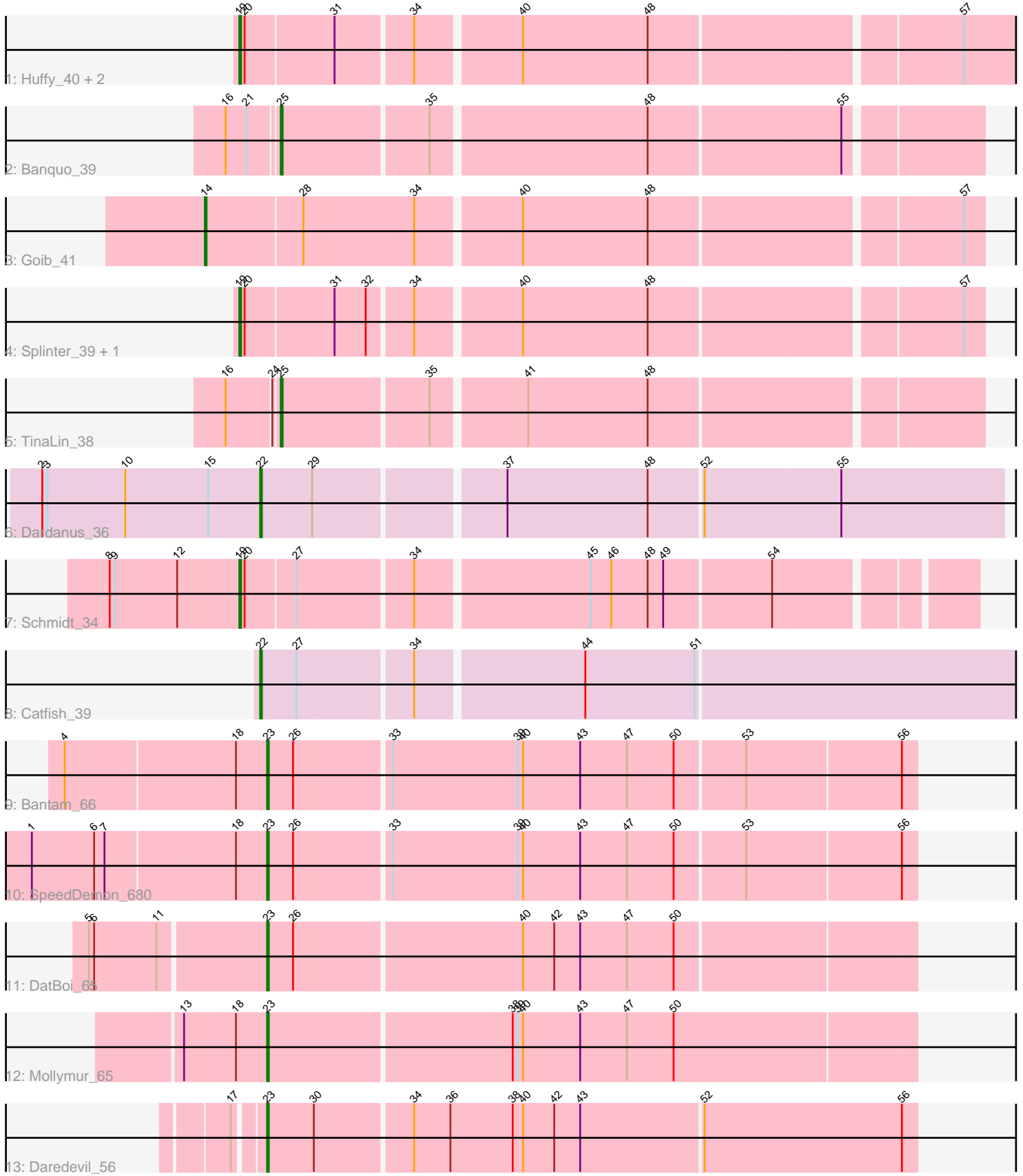


# Pham 194421



Note: Tracks are now grouped by subcluster and scaled. Switching in subcluster is indicated by changes in track color. Track scale is now set by default to display the region 30 bp upstream of start 1 to 30 bp downstream of the last possible start. If this default region is judged to be packed too tightly with annotated starts, the track will be further scaled to only show that region of the ORF with annotated starts. This action will be indicated by adding "Zoomed" to the title. For starts, yellow indicates the location of called starts comprised solely of Glimmer/GeneMark auto-annotations, green indicates the location of called starts with at least 1 manual gene annotation.

## Pham 194421 Report

This analysis was run 11/02/24 on database version 579.

Pham number 194421 has 16 members, 0 are drafts.

Phages represented in each track:

- Track 1 : Huffy\_40, TZGordon\_41, DinoDaryn\_40
- Track 2 : Banquo\_39
- Track 3 : Goib\_41
- Track 4 : Splinter\_39, Vendetta\_39
- Track 5 : TinaLin\_38
- Track 6 : Dardanus\_36
- Track 7 : Schmidt\_34
- Track 8 : Catfish\_39
- Track 9 : Bantam\_66
- Track 10 : SpeedDemon\_680
- Track 11 : DatBoi\_65
- Track 12 : Mollymur\_65
- Track 13 : Daredevil\_56

### ***Summary of Final Annotations (See graph section above for start numbers):***

The start number called the most often in the published annotations is 19, it was called in 6 of the 16 non-draft genes in the pham.

Genes that call this "Most Annotated" start:

- DinoDaryn\_40, Huffy\_40, Schmidt\_34, Splinter\_39, TZGordon\_41, Vendetta\_39,

Genes that have the "Most Annotated" start but do not call it:

- 

Genes that do not have the "Most Annotated" start:

- Banquo\_39, Bantam\_66, Catfish\_39, Dardanus\_36, Daredevil\_56, DatBoi\_65, Goib\_41, Mollymur\_65, SpeedDemon\_680, TinaLin\_38,

### **Summary by start number:**

Start 14:

- Found in 1 of 16 ( 6.2% ) of genes in pham
- Manual Annotations of this start: 1 of 16

- Called 100.0% of time when present
- Phage (with cluster) where this start called: Goib\_41 (CU1),

Start 19:

- Found in 6 of 16 ( 37.5% ) of genes in pham
- Manual Annotations of this start: 6 of 16
- Called 100.0% of time when present
- Phage (with cluster) where this start called: DinoDaryn\_40 (CU1), Huffy\_40 (CU1), Schmidt\_34 (CU4), Splinter\_39 (CU1), TZGordon\_41 (CU1), Vendetta\_39 (CU1),

Start 22:

- Found in 2 of 16 ( 12.5% ) of genes in pham
- Manual Annotations of this start: 2 of 16
- Called 100.0% of time when present
- Phage (with cluster) where this start called: Catfish\_39 (CU5), Dardanus\_36 (CU3),

Start 23:

- Found in 5 of 16 ( 31.2% ) of genes in pham
- Manual Annotations of this start: 5 of 16
- Called 100.0% of time when present
- Phage (with cluster) where this start called: Bantam\_66 (DL), Daredevil\_56 (DL), DatBoi\_65 (DL), Mollymur\_65 (DL), SpeedDemon\_680 (DL),

Start 25:

- Found in 2 of 16 ( 12.5% ) of genes in pham
- Manual Annotations of this start: 2 of 16
- Called 100.0% of time when present
- Phage (with cluster) where this start called: Banquo\_39 (CU1), TinaLin\_38 (CU1),

### **Summary by clusters:**

There are 5 clusters represented in this pham: CU5, CU4, CU3, DL, CU1,

Info for manual annotations of cluster CU1:

- Start number 14 was manually annotated 1 time for cluster CU1.
- Start number 19 was manually annotated 5 times for cluster CU1.
- Start number 25 was manually annotated 2 times for cluster CU1.

Info for manual annotations of cluster CU3:

- Start number 22 was manually annotated 1 time for cluster CU3.

Info for manual annotations of cluster CU4:

- Start number 19 was manually annotated 1 time for cluster CU4.

Info for manual annotations of cluster CU5:

- Start number 22 was manually annotated 1 time for cluster CU5.

Info for manual annotations of cluster DL:

- Start number 23 was manually annotated 5 times for cluster DL.

### **Gene Information:**

Gene: Banquo\_39 Start: 28265, Stop: 27882, Start Num: 25  
Candidate Starts for Banquo\_39:  
(16, 28292), (21, 28280), (Start: 25 @28265 has 2 MA's), (35, 28184), (48, 28064), (55, 27956),

Gene: Bantam\_66 Start: 49725, Stop: 49360, Start Num: 23  
Candidate Starts for Bantam\_66:  
(4, 49839), (18, 49743), (Start: 23 @49725 has 5 MA's), (26, 49710), (33, 49656), (39, 49584), (40, 49581), (43, 49548), (47, 49521), (50, 49494), (53, 49455), (56, 49368),

Gene: Catfish\_39 Start: 29601, Stop: 29161, Start Num: 22  
Candidate Starts for Catfish\_39:  
(Start: 22 @29601 has 2 MA's), (27, 29580), (34, 29517), (44, 29424), (51, 29361),

Gene: Dardanus\_36 Start: 26552, Stop: 26139, Start Num: 22  
Candidate Starts for Dardanus\_36:  
(2, 26678), (3, 26675), (10, 26630), (15, 26582), (Start: 22 @26552 has 2 MA's), (29, 26522), (37, 26420), (48, 26339), (52, 26309), (55, 26231),

Gene: Daredevil\_56 Start: 45221, Stop: 44853, Start Num: 23  
Candidate Starts for Daredevil\_56:  
(17, 45236), (Start: 23 @45221 has 5 MA's), (30, 45194), (34, 45140), (36, 45119), (38, 45083), (40, 45077), (42, 45059), (43, 45044), (52, 44975), (56, 44861),

Gene: DatBoi\_65 Start: 49746, Stop: 49381, Start Num: 23  
Candidate Starts for DatBoi\_65:  
(5, 49845), (6, 49842), (11, 49806), (Start: 23 @49746 has 5 MA's), (26, 49731), (40, 49602), (42, 49584), (43, 49569), (47, 49542), (50, 49515),

Gene: DinoDaryn\_40 Start: 28489, Stop: 28061, Start Num: 19  
Candidate Starts for DinoDaryn\_40:  
(Start: 19 @28489 has 6 MA's), (20, 28486), (31, 28438), (34, 28396), (40, 28339), (48, 28267), (57, 28096),

Gene: Goib\_41 Start: 29185, Stop: 28757, Start Num: 14  
Candidate Starts for Goib\_41:  
(Start: 14 @29185 has 1 MA's), (28, 29131), (34, 29068), (40, 29011), (48, 28939), (57, 28768),

Gene: Huffy\_40 Start: 28489, Stop: 28061, Start Num: 19  
Candidate Starts for Huffy\_40:  
(Start: 19 @28489 has 6 MA's), (20, 28486), (31, 28438), (34, 28396), (40, 28339), (48, 28267), (57, 28096),

Gene: Mollymur\_65 Start: 50001, Stop: 49633, Start Num: 23  
Candidate Starts for Mollymur\_65:  
(13, 50049), (18, 50019), (Start: 23 @50001 has 5 MA's), (38, 49863), (39, 49860), (40, 49857), (43, 49824), (47, 49797), (50, 49770),

Gene: Schmidt\_34 Start: 25761, Stop: 25366, Start Num: 19  
Candidate Starts for Schmidt\_34:  
(8, 25836), (9, 25833), (12, 25797), (Start: 19 @25761 has 6 MA's), (20, 25758), (27, 25731), (34, 25668), (45, 25572), (46, 25560), (48, 25539), (49, 25530), (54, 25470),

Gene: SpeedDemon\_680 Start: 51957, Stop: 51592, Start Num: 23

Candidate Starts for SpeedDemon\_680:

(1, 52089), (6, 52053), (7, 52047), (18, 51975), (Start: 23 @51957 has 5 MA's), (26, 51942), (33, 51888), (39, 51816), (40, 51813), (43, 51780), (47, 51753), (50, 51726), (53, 51687), (56, 51600),

Gene: Splinter\_39 Start: 29090, Stop: 28686, Start Num: 19

Candidate Starts for Splinter\_39:

(Start: 19 @29090 has 6 MA's), (20, 29087), (31, 29039), (32, 29021), (34, 28997), (40, 28940), (48, 28868), (57, 28697),

Gene: TZGordon\_41 Start: 28404, Stop: 28000, Start Num: 19

Candidate Starts for TZGordon\_41:

(Start: 19 @28404 has 6 MA's), (20, 28401), (31, 28353), (34, 28311), (40, 28254), (48, 28182), (57, 28011),

Gene: TinaLin\_38 Start: 27938, Stop: 27555, Start Num: 25

Candidate Starts for TinaLin\_38:

(16, 27965), (24, 27941), (Start: 25 @27938 has 2 MA's), (35, 27857), (41, 27806), (48, 27737),

Gene: Vendetta\_39 Start: 29090, Stop: 28686, Start Num: 19

Candidate Starts for Vendetta\_39:

(Start: 19 @29090 has 6 MA's), (20, 29087), (31, 29039), (32, 29021), (34, 28997), (40, 28940), (48, 28868), (57, 28697),