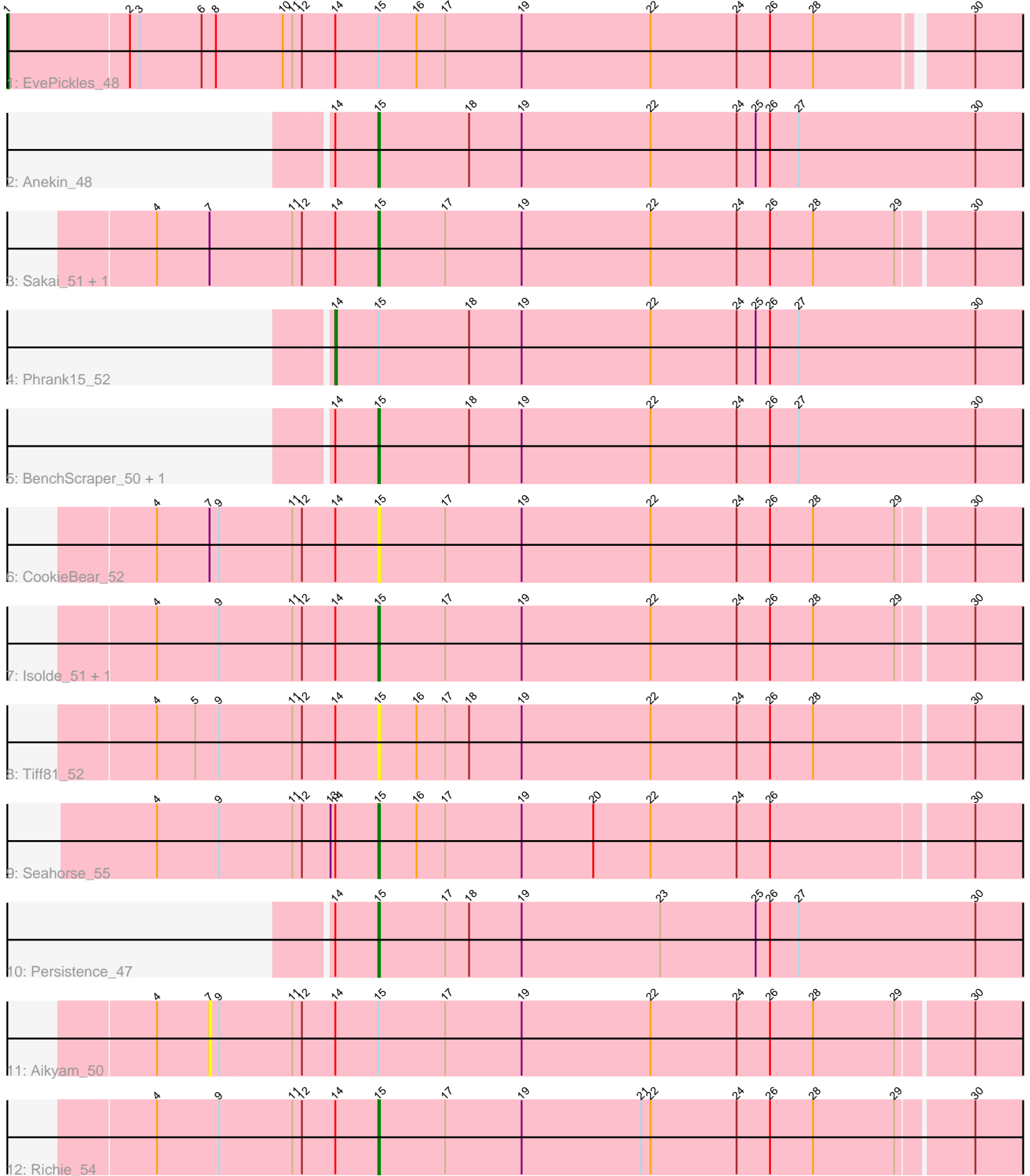


Pham 194431



Note: Tracks are now grouped by subcluster and scaled. Switching in subcluster is indicated by changes in track color. Track scale is now set by default to display the region 30 bp upstream of start 1 to 30 bp downstream of the last possible start. If this default region is judged to be packed too tightly with annotated starts, the track will be further scaled to only show that region of the ORF with annotated starts. This action will be indicated by adding "Zoomed" to the title. For starts, yellow indicates the location of called starts comprised solely of Glimmer/GeneMark auto-annotations, green indicates the location of called starts with at least 1 manual gene annotation.

Pham 194431 Report

This analysis was run 11/02/24 on database version 579.

Pham number 194431 has 15 members, 4 are drafts.

Phages represented in each track:

- Track 1 : EvePickles_48
- Track 2 : Anekin_48
- Track 3 : Sakai_51, Gorpy_52
- Track 4 : Phrank15_52
- Track 5 : BenchScraper_50, Raqqa_43
- Track 6 : CookieBear_52
- Track 7 : Isolde_51, Raphaella_51
- Track 8 : Tiff81_52
- Track 9 : Seahorse_55
- Track 10 : Persistence_47
- Track 11 : Aikyam_50
- Track 12 : Richie_54

Summary of Final Annotations (See graph section above for start numbers):

The start number called the most often in the published annotations is 15, it was called in 9 of the 11 non-draft genes in the pham.

Genes that call this "Most Annotated" start:

- Anekin_48, BenchScraper_50, CookieBear_52, Gorpy_52, Isolde_51, Persistence_47, Raphaella_51, Raqqa_43, Richie_54, Sakai_51, Seahorse_55, Tiff81_52,

Genes that have the "Most Annotated" start but do not call it:

- Aikyam_50, EvePickles_48, Phrank15_52,

Genes that do not have the "Most Annotated" start:

-

Summary by start number:

Start 1:

- Found in 1 of 15 (6.7%) of genes in pham
- Manual Annotations of this start: 1 of 11

- Called 100.0% of time when present
- Phage (with cluster) where this start called: EvePickles_48 (AY),

Start 7:

- Found in 4 of 15 (26.7%) of genes in pham
- No Manual Annotations of this start.
- Called 25.0% of time when present
- Phage (with cluster) where this start called: Aikyam_50 (AY),

Start 14:

- Found in 15 of 15 (100.0%) of genes in pham
- Manual Annotations of this start: 1 of 11
- Called 6.7% of time when present
- Phage (with cluster) where this start called: Phrank15_52 (AY),

Start 15:

- Found in 15 of 15 (100.0%) of genes in pham
- Manual Annotations of this start: 9 of 11
- Called 80.0% of time when present
- Phage (with cluster) where this start called: Anekin_48 (AY), BenchScraper_50 (AY), CookieBear_52 (AY), Gorpy_52 (AY), Isolde_51 (AY), Persistence_47 (AY), Raphaella_51 (AY), Raqqa_43 (AY), Richie_54 (AY), Sakai_51 (AY), Seahorse_55 (AY), Tiff81_52 (AY),

Summary by clusters:

There is one cluster represented in this pham: AY

Info for manual annotations of cluster AY:

- Start number 1 was manually annotated 1 time for cluster AY.
- Start number 14 was manually annotated 1 time for cluster AY.
- Start number 15 was manually annotated 9 times for cluster AY.

Gene Information:

Gene: Aikyam_50 Start: 30065, Stop: 29508, Start Num: 7

Candidate Starts for Aikyam_50:

(4, 30098), (7, 30065), (9, 30059), (11, 30014), (12, 30008), (Start: 14 @29987 has 1 MA's), (Start: 15 @29960 has 9 MA's), (17, 29918), (19, 29870), (22, 29789), (24, 29735), (26, 29714), (28, 29687), (29, 29636), (30, 29591),

Gene: Anekin_48 Start: 31396, Stop: 30938, Start Num: 15

Candidate Starts for Anekin_48:

(Start: 14 @31423 has 1 MA's), (Start: 15 @31396 has 9 MA's), (18, 31339), (19, 31306), (22, 31225), (24, 31171), (25, 31159), (26, 31150), (27, 31132), (30, 31021),

Gene: BenchScraper_50 Start: 31282, Stop: 30824, Start Num: 15

Candidate Starts for BenchScraper_50:

(Start: 14 @31309 has 1 MA's), (Start: 15 @31282 has 9 MA's), (18, 31225), (19, 31192), (22, 31111), (24, 31057), (26, 31036), (27, 31018), (30, 30907),

Gene: CookieBear_52 Start: 31940, Stop: 31488, Start Num: 15

Candidate Starts for CookieBear_52:

(4, 32078), (7, 32045), (9, 32039), (11, 31994), (12, 31988), (Start: 14 @31967 has 1 MA's), (Start: 15 @31940 has 9 MA's), (17, 31898), (19, 31850), (22, 31769), (24, 31715), (26, 31694), (28, 31667), (29, 31616), (30, 31571),

Gene: EvePickles_48 Start: 32370, Stop: 31693, Start Num: 1

Candidate Starts for EvePickles_48:

(Start: 1 @32370 has 1 MA's), (2, 32295), (3, 32289), (6, 32250), (8, 32241), (10, 32199), (11, 32193), (12, 32187), (Start: 14 @32166 has 1 MA's), (Start: 15 @32139 has 9 MA's), (16, 32115), (17, 32097), (19, 32049), (22, 31968), (24, 31914), (26, 31893), (28, 31866), (30, 31776),

Gene: Gorpy_52 Start: 32932, Stop: 32480, Start Num: 15

Candidate Starts for Gorpy_52:

(4, 33070), (7, 33037), (11, 32986), (12, 32980), (Start: 14 @32959 has 1 MA's), (Start: 15 @32932 has 9 MA's), (17, 32890), (19, 32842), (22, 32761), (24, 32707), (26, 32686), (28, 32659), (29, 32608), (30, 32563),

Gene: Isolde_51 Start: 31609, Stop: 31157, Start Num: 15

Candidate Starts for Isolde_51:

(4, 31747), (9, 31708), (11, 31663), (12, 31657), (Start: 14 @31636 has 1 MA's), (Start: 15 @31609 has 9 MA's), (17, 31567), (19, 31519), (22, 31438), (24, 31384), (26, 31363), (28, 31336), (29, 31285), (30, 31240),

Gene: Persistence_47 Start: 30673, Stop: 30215, Start Num: 15

Candidate Starts for Persistence_47:

(Start: 14 @30700 has 1 MA's), (Start: 15 @30673 has 9 MA's), (17, 30631), (18, 30616), (19, 30583), (23, 30496), (25, 30436), (26, 30427), (27, 30409), (30, 30298),

Gene: Phrank15_52 Start: 31931, Stop: 31446, Start Num: 14

Candidate Starts for Phrank15_52:

(Start: 14 @31931 has 1 MA's), (Start: 15 @31904 has 9 MA's), (18, 31847), (19, 31814), (22, 31733), (24, 31679), (25, 31667), (26, 31658), (27, 31640), (30, 31529),

Gene: Raphaella_51 Start: 31541, Stop: 31089, Start Num: 15

Candidate Starts for Raphaella_51:

(4, 31679), (9, 31640), (11, 31595), (12, 31589), (Start: 14 @31568 has 1 MA's), (Start: 15 @31541 has 9 MA's), (17, 31499), (19, 31451), (22, 31370), (24, 31316), (26, 31295), (28, 31268), (29, 31217), (30, 31172),

Gene: Raqqa_43 Start: 28744, Stop: 28286, Start Num: 15

Candidate Starts for Raqqa_43:

(Start: 14 @28771 has 1 MA's), (Start: 15 @28744 has 9 MA's), (18, 28687), (19, 28654), (22, 28573), (24, 28519), (26, 28498), (27, 28480), (30, 28369),

Gene: Richie_54 Start: 32610, Stop: 32158, Start Num: 15

Candidate Starts for Richie_54:

(4, 32748), (9, 32709), (11, 32664), (12, 32658), (Start: 14 @32637 has 1 MA's), (Start: 15 @32610 has 9 MA's), (17, 32568), (19, 32520), (21, 32445), (22, 32439), (24, 32385), (26, 32364), (28, 32337), (29, 32286), (30, 32241),

Gene: Sakai_51 Start: 31643, Stop: 31191, Start Num: 15

Candidate Starts for Sakai_51:

(4, 31781), (7, 31748), (11, 31697), (12, 31691), (Start: 14 @31670 has 1 MA's), (Start: 15 @31643 has 9 MA's), (17, 31601), (19, 31553), (22, 31472), (24, 31418), (26, 31397), (28, 31370), (29, 31319), (30, 31274),

Gene: Seahorse_55 Start: 33875, Stop: 33423, Start Num: 15

Candidate Starts for Seahorse_55:

(4, 34013), (9, 33974), (11, 33929), (12, 33923), (13, 33905), (Start: 14 @33902 has 1 MA's), (Start: 15 @33875 has 9 MA's), (16, 33851), (17, 33833), (19, 33785), (20, 33740), (22, 33704), (24, 33650), (26, 33629), (30, 33506),

Gene: Tiff81_52 Start: 30054, Stop: 29602, Start Num: 15

Candidate Starts for Tiff81_52:

(4, 30192), (5, 30168), (9, 30153), (11, 30108), (12, 30102), (Start: 14 @30081 has 1 MA's), (Start: 15 @30054 has 9 MA's), (16, 30030), (17, 30012), (18, 29997), (19, 29964), (22, 29883), (24, 29829), (26, 29808), (28, 29781), (30, 29685),