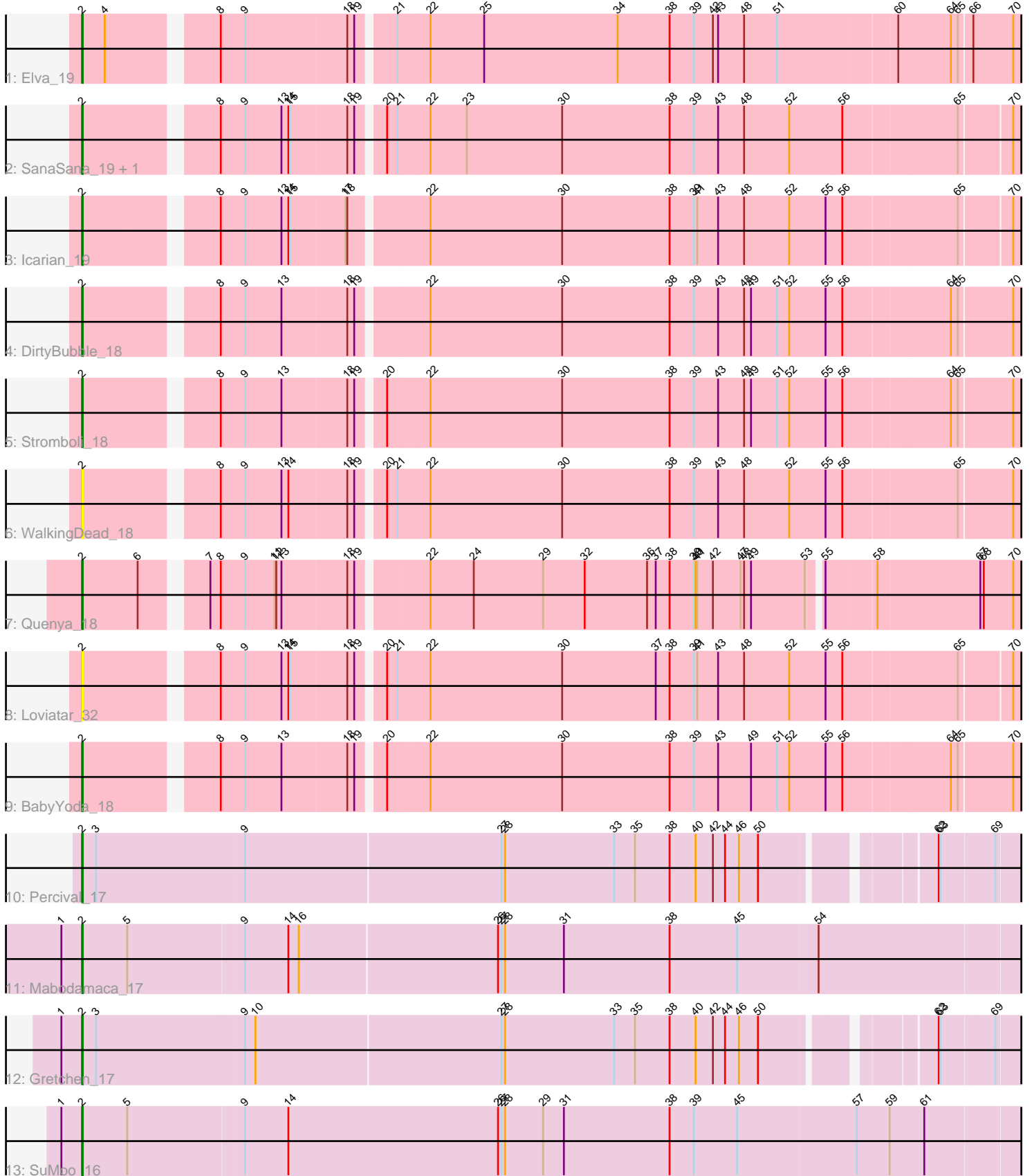


# Zoomed Pham 194464



Note: Tracks are now grouped by subcluster and scaled. Switching in subcluster is indicated by changes in track color. Track scale is now set by default to display the region 30 bp upstream of start 1 to 30 bp downstream of the last possible start. If this default region is judged to be packed too tightly with annotated starts, the track will be further scaled to only show that region of the ORF with annotated starts. This action will be indicated by adding "Zoomed" to the title. For starts, yellow indicates the location of called starts comprised solely of Glimmer/GeneMark auto-annotations, green indicates the location of called starts with at least 1 manual gene annotation.

## Pham 194464 Report

This analysis was run 11/02/24 on database version 579.

Pham number 194464 has 14 members, 2 are drafts.

Phages represented in each track:

- Track 1 : Elva\_19
- Track 2 : SanaSana\_19, Stoor\_18
- Track 3 : Icarian\_19
- Track 4 : DirtyBubble\_18
- Track 5 : Stromboli\_18
- Track 6 : WalkingDead\_18
- Track 7 : Quenya\_18
- Track 8 : Loviatar\_32
- Track 9 : BabyYoda\_18
- Track 10 : Percival\_17
- Track 11 : Mabodamaca\_17
- Track 12 : Gretchen\_17
- Track 13 : SuMoo\_16

### ***Summary of Final Annotations (See graph section above for start numbers):***

The start number called the most often in the published annotations is 2, it was called in 12 of the 12 non-draft genes in the pham.

Genes that call this "Most Annotated" start:

- BabyYoda\_18, DirtyBubble\_18, Elva\_19, Gretchen\_17, Icarian\_19, Loviatar\_32, Mabodamaca\_17, Percival\_17, Quenya\_18, SanaSana\_19, Stoor\_18, Stromboli\_18, SuMoo\_16, WalkingDead\_18,

Genes that have the "Most Annotated" start but do not call it:

- 

Genes that do not have the "Most Annotated" start:

- 

### **Summary by start number:**

Start 2:

- Found in 14 of 14 ( 100.0% ) of genes in pham

- Manual Annotations of this start: 12 of 12
- Called 100.0% of time when present
- Phage (with cluster) where this start called: BabyYoda\_18 (EB), DirtyBubble\_18 (EB), Elva\_19 (EB), Gretchen\_17 (EH), Icarian\_19 (EB), Loviatar\_32 (EB), Mabodamaca\_17 (EH), Percival\_17 (EH), Quenya\_18 (EB), SanaSana\_19 (EB), Stoor\_18 (EB), Stromboli\_18 (EB), SuMoo\_16 (EH), WalkingDead\_18 (EB),

### Summary by clusters:

There are 2 clusters represented in this pham: EH, EB,

Info for manual annotations of cluster EB:

- Start number 2 was manually annotated 8 times for cluster EB.

Info for manual annotations of cluster EH:

- Start number 2 was manually annotated 4 times for cluster EH.

### Gene Information:

Gene: BabyYoda\_18 Start: 13988, Stop: 16123, Start Num: 2

Candidate Starts for BabyYoda\_18:

(Start: 2 @13988 has 12 MA's), (8, 14189), (9, 14231), (13, 14294), (18, 14405), (19, 14417), (20, 14456), (22, 14528), (30, 14756), (38, 14942), (39, 14984), (43, 15026), (49, 15083), (51, 15128), (52, 15149), (55, 15212), (56, 15239), (64, 15416), (65, 15428), (70, 15518), (73, 15563), (74, 15575), (76, 15605), (77, 15617), (78, 15638), (84, 15707), (88, 15749), (92, 15809), (109, 16103),

Gene: DirtyBubble\_18 Start: 13946, Stop: 16081, Start Num: 2

Candidate Starts for DirtyBubble\_18:

(Start: 2 @13946 has 12 MA's), (8, 14147), (9, 14189), (13, 14252), (18, 14363), (19, 14375), (22, 14486), (30, 14714), (38, 14900), (39, 14942), (43, 14984), (48, 15029), (49, 15041), (51, 15086), (52, 15107), (55, 15170), (56, 15197), (64, 15374), (65, 15386), (70, 15476), (73, 15521), (74, 15533), (76, 15563), (77, 15575), (78, 15596), (84, 15665), (88, 15707), (91, 15764), (92, 15767), (109, 16061),

Gene: Elva\_19 Start: 13907, Stop: 16039, Start Num: 2

Candidate Starts for Elva\_19:

(Start: 2 @13907 has 12 MA's), (4, 13943), (8, 14108), (9, 14150), (18, 14324), (19, 14336), (21, 14393), (22, 14447), (25, 14540), (34, 14771), (38, 14861), (39, 14903), (42, 14936), (43, 14945), (48, 14990), (51, 15047), (60, 15245), (64, 15332), (65, 15344), (66, 15365), (70, 15434), (73, 15479), (74, 15491), (76, 15521), (77, 15533), (78, 15554), (84, 15623), (91, 15722), (92, 15725), (109, 16019),

Gene: Gretchen\_17 Start: 14858, Stop: 16924, Start Num: 2

Candidate Starts for Gretchen\_17:

(1, 14825), (Start: 2 @14858 has 12 MA's), (3, 14879), (9, 15131), (10, 15149), (27, 15569), (28, 15575), (33, 15764), (35, 15800), (38, 15860), (40, 15905), (42, 15935), (44, 15956), (46, 15980), (50, 16013), (62, 16268), (63, 16271), (69, 16361), (80, 16517), (102, 16796), (104, 16811), (108, 16889),

Gene: Icarian\_19 Start: 13828, Stop: 15954, Start Num: 2

Candidate Starts for Icarian\_19:

(Start: 2 @13828 has 12 MA's), (8, 14029), (9, 14071), (13, 14134), (14, 14146), (15, 14149), (17, 14242), (18, 14245), (22, 14368), (30, 14596), (38, 14782), (39, 14824), (41, 14830), (43, 14866), (48, 14911), (52, 14989), (55, 15052), (56, 15079), (65, 15268), (70, 15352), (72, 15394), (73, 15397), (76,

15433), (77, 15445), (78, 15466), (79, 15487), (89, 15589), (109, 15934),

Gene: Loviatar\_32 Start: 13919, Stop: 16045, Start Num: 2

Candidate Starts for Loviatar\_32:

(Start: 2 @13919 has 12 MA's), (8, 14120), (9, 14162), (13, 14225), (14, 14237), (15, 14240), (18, 14336), (19, 14348), (20, 14387), (21, 14405), (22, 14459), (30, 14687), (37, 14849), (38, 14873), (39, 14915), (41, 14921), (43, 14957), (48, 15002), (52, 15080), (55, 15143), (56, 15170), (65, 15359), (70, 15443), (72, 15485), (73, 15488), (75, 15506), (77, 15536), (89, 15680), (98, 15788), (109, 16025),

Gene: Mabodamaca\_17 Start: 13974, Stop: 16115, Start Num: 2

Candidate Starts for Mabodamaca\_17:

(1, 13941), (Start: 2 @13974 has 12 MA's), (5, 14049), (9, 14244), (14, 14319), (16, 14337), (26, 14676), (27, 14682), (28, 14688), (31, 14790), (38, 14973), (45, 15090), (54, 15225), (77, 15642), (82, 15702), (84, 15720), (93, 15822), (97, 15867), (100, 15927), (101, 15963), (105, 16011), (109, 16098),

Gene: Percival\_17 Start: 14692, Stop: 16758, Start Num: 2

Candidate Starts for Percival\_17:

(Start: 2 @14692 has 12 MA's), (3, 14713), (9, 14965), (27, 15403), (28, 15409), (33, 15598), (35, 15634), (38, 15694), (40, 15739), (42, 15769), (44, 15790), (46, 15814), (50, 15847), (62, 16102), (63, 16105), (69, 16195), (71, 16237), (80, 16351), (100, 16588), (102, 16630), (104, 16645), (108, 16723),

Gene: Quenya\_18 Start: 13518, Stop: 15635, Start Num: 2

Candidate Starts for Quenya\_18:

(Start: 2 @13518 has 12 MA's), (6, 13611), (7, 13704), (8, 13722), (9, 13764), (11, 13815), (12, 13818), (13, 13827), (18, 13938), (19, 13950), (22, 14061), (24, 14136), (29, 14256), (32, 14328), (36, 14436), (37, 14451), (38, 14475), (39, 14517), (40, 14520), (41, 14523), (42, 14550), (47, 14598), (48, 14604), (49, 14616), (53, 14709), (55, 14727), (58, 14808), (67, 14979), (68, 14985), (70, 15036), (74, 15093), (75, 15099), (76, 15120), (77, 15132), (78, 15153), (79, 15174), (83, 15222), (86, 15252), (87, 15255), (90, 15279), (91, 15318), (98, 15378), (99, 15399), (109, 15615),

Gene: SanaSana\_19 Start: 13858, Stop: 15984, Start Num: 2

Candidate Starts for SanaSana\_19:

(Start: 2 @13858 has 12 MA's), (8, 14059), (9, 14101), (13, 14164), (14, 14176), (15, 14179), (18, 14275), (19, 14287), (20, 14326), (21, 14344), (22, 14398), (23, 14461), (30, 14626), (38, 14812), (39, 14854), (43, 14896), (48, 14941), (52, 15019), (56, 15109), (65, 15298), (70, 15382), (72, 15424), (73, 15427), (76, 15463), (77, 15475), (79, 15517), (85, 15574), (89, 15619), (109, 15964),

Gene: Stoor\_18 Start: 13855, Stop: 15981, Start Num: 2

Candidate Starts for Stoor\_18:

(Start: 2 @13855 has 12 MA's), (8, 14056), (9, 14098), (13, 14161), (14, 14173), (15, 14176), (18, 14272), (19, 14284), (20, 14323), (21, 14341), (22, 14395), (23, 14458), (30, 14623), (38, 14809), (39, 14851), (43, 14893), (48, 14938), (52, 15016), (56, 15106), (65, 15295), (70, 15379), (72, 15421), (73, 15424), (76, 15460), (77, 15472), (79, 15514), (85, 15571), (89, 15616), (109, 15961),

Gene: Stromboli\_18 Start: 13986, Stop: 16121, Start Num: 2

Candidate Starts for Stromboli\_18:

(Start: 2 @13986 has 12 MA's), (8, 14187), (9, 14229), (13, 14292), (18, 14403), (19, 14415), (20, 14454), (22, 14526), (30, 14754), (38, 14940), (39, 14982), (43, 15024), (48, 15069), (49, 15081), (51, 15126), (52, 15147), (55, 15210), (56, 15237), (64, 15414), (65, 15426), (70, 15516), (73, 15561), (74, 15573), (76, 15603), (77, 15615), (78, 15636), (84, 15705), (88, 15747), (92, 15807), (109, 16101),

Gene: SuMoo\_16 Start: 12931, Stop: 15072, Start Num: 2

Candidate Starts for SuMoo\_16:

(1, 12898), (Start: 2 @12931 has 12 MA's), (5, 13006), (9, 13201), (14, 13276), (26, 13639), (27, 13645), (28, 13651), (29, 13717), (31, 13753), (38, 13936), (39, 13978), (45, 14053), (57, 14257), (59, 14314), (61, 14371), (81, 14650), (94, 14809), (96, 14839), (103, 14953), (106, 14983), (107, 15031),

Gene: WalkingDead\_18 Start: 13978, Stop: 16113, Start Num: 2

Candidate Starts for WalkingDead\_18:

(Start: 2 @13978 has 12 MA's), (8, 14179), (9, 14221), (13, 14284), (14, 14296), (18, 14395), (19, 14407), (20, 14446), (21, 14464), (22, 14518), (30, 14746), (38, 14932), (39, 14974), (43, 15016), (48, 15061), (52, 15139), (55, 15202), (56, 15229), (65, 15418), (70, 15508), (73, 15553), (74, 15565), (76, 15595), (77, 15607), (78, 15628), (88, 15739), (91, 15796), (92, 15799), (95, 15838), (109, 16093),