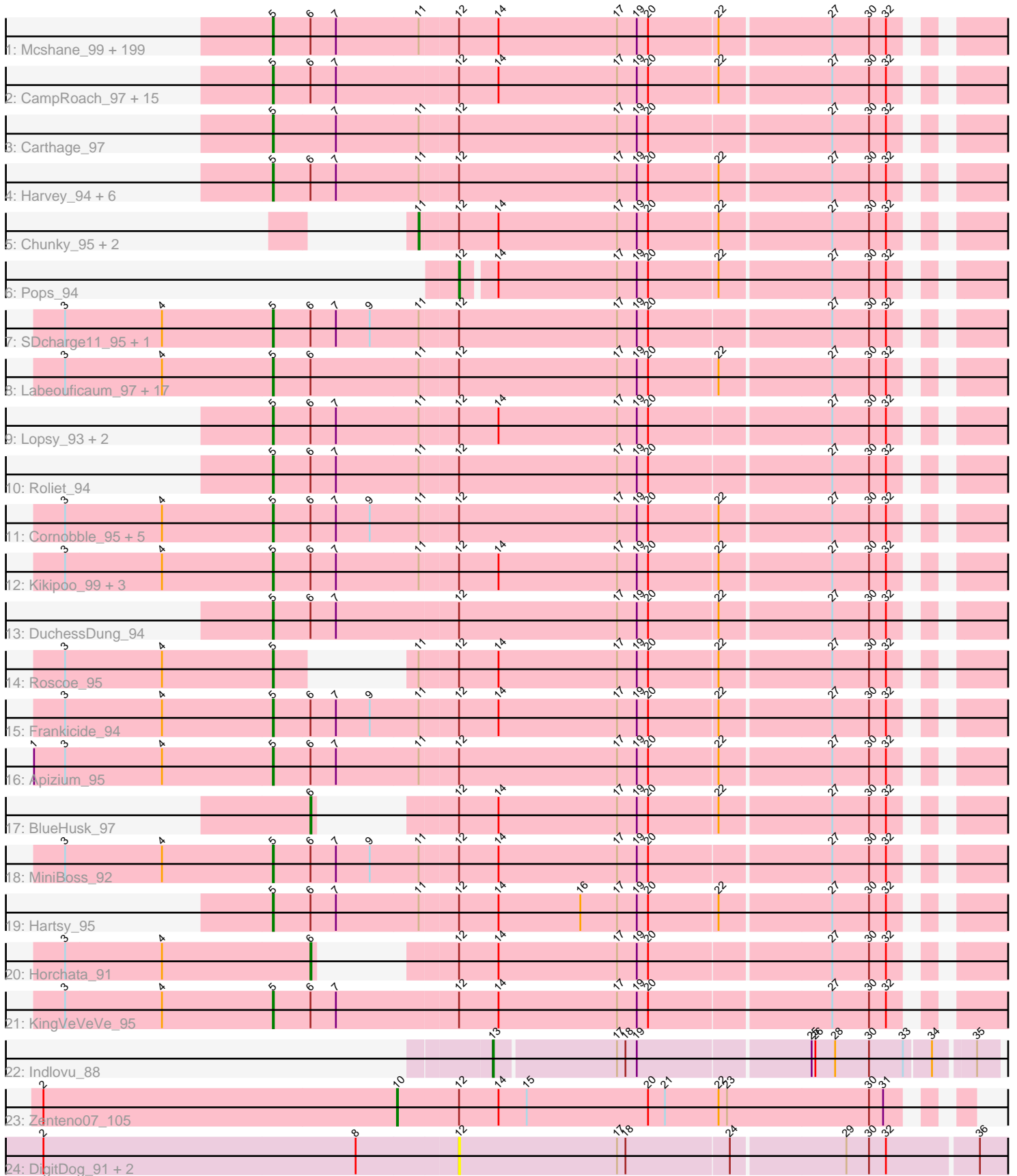


Pham 195379



Note: Tracks are now grouped by subcluster and scaled. Switching in subcluster is indicated by changes in track color. Track scale is now set by default to display the region 30 bp upstream of start 1 to 30 bp downstream of the last possible start. If this default region is judged to be packed too tightly with annotated starts, the track will be further scaled to only show that region of the ORF with annotated starts. This action will be indicated by adding "Zoomed" to the title. For starts, yellow indicates the location of called starts comprised solely of Glimmer/GeneMark auto-annotations, green indicates the location of called starts with at least 1 manual gene annotation.

Pham 195379 Report

This analysis was run 12/09/24 on database version 580.

Pham number 195379 has 276 members, 15 are drafts.

Phages represented in each track:

- Track 1 : Mcshane_99, Placalicious_94, Craff_98, UAch1_97, DelRivs_96, Puhltonio_92, SilverBell_98, Struggle_97, Maru_96, True_98, Olive_93, Riggan_98, Thunderbird_97, Phunky_94, BlackStallion_96, Fringe_101, Keitherie_100, Phipps_94, Eugenia_99, Mesh1_97, Weher20_94, Olak_99, Mecca_97, Oline_96, Phergie_97, Selr12_101, Ricotta_98, JacAttac_97, Lego3393_95, Inverness_94, Anderson_98, Simielle_97, Andre_101, Orfeu_97, Lumine_98, Bishoperium_97, Longacauda_97, ProfessorX_94, Numberten_97, Oosterbaan_97, Kimbrough_98, TallGrassMM_96, Inchworm_98, Yoshand_98, Chah_99, Newman_92, Podrick_95, Badfish_97, Cannibal_97, Beaglebox_93, Slatt_99, Etaye_96, Kwadwo_96, FugateOSU_97, Hertubise_96, Toni_96, Manad_96, OliverWalter_96, GeneCoco_96, Doddsville_94, TomBombadil_97, Gareth_97, Nicole21_98, Haimas_94, FluffyNinja_98, Phareon_94, Waterdiva_98, DirtJuice_98, Daffy_96, HenryJackson_97, DonSanchon_92, Childish_97, KLucky39_94, UncleHowie_93, Sheila_91, Swiphy_101, Cosmolli16_98, Legolas_98, Matalotodo_95, Haleema_96, KingTut_87, Charles1_100, Tomlarah_97, JDog_96, LemonSlice_97, Nyala_97, EmpTee_96, Jillium_97, Melc17_94, Burr_99, Giraffe_98, Piglet_0096, Cher_97, Spartan300_96, Altwerkus_94, Hocus_96, Samaymay_97, Squid_96, LuckyMarjie_94, Buckeye_95, Timmi_95, CamL_97, MRabcd_97, Adriana_97, Scoot17C_97, MitKao_97, Freya_93, Thora_95, Plmatters_94, Jiminy_97, Virapocalypse_98, Chute_97, HighStump_99, Held_95, Pherdinand_98, Banjo_93, Zaider_98, Mulan_96, Coletti_99, Potter_91, Hamish_94, Grand2040_94, Bluephacebaby_96, Usavi_97, FriarPreacher_94, Morgushi_94, DaddyDaniels_100, QueenBeane_97, Suffolk_92, Squiggle_96, Dice_97, Soile_98, ABU_95, Orion_95, Zelda_97, LostAndPhound_96, CheetO_93, KlimbOn_96, Serpentine_0099, JakeO_98, Prickles_97, LasagnaCat_98, Cobra_97, Sigman_96, Crownjwl_94, Scrick_98, Sophia_95, Vaticameos_94, Skippy_97, DoesntMatter_94, Iridoclysis_96, Trypo_97, Colbert_95, Xavier_96, Lulwa_94, PhenghisKhan_97, Nacho_0099, Emiris_99, Katniss_99, Telesworld_95, LeiMonet_99, PhatLouie_99, PhatCats2014_96, Brilliant_100, Mosaic_94, Megatron_98, Lasso_96, SassyCat97_95, Vortex_95, PG1_95, PhrodoBaggins_99, PhrankReynolds_95, ShiVal_96, Fang_97, Mutante_98, Pacifista_99, Kahve_97, Dati_94, Omniscient_98, Morty_97, AbsoluteMadLad_95, LeeLot_95, Mana_94, Swish_98, Duggie_97, Serendipity_96, ThreeOh3D2_98, Quisquiliae_99, PinheadLarry_96, Solosis_95, Hetaeria_96, Jiraiya_102, Phamished_96, Gophee_96, Orwigg_99, Vista_96, YouGoGlencoco_97, Murdoc_93, JangoPhett_95, Dione_95
- Track 2 : CampRoach_97, Durga_99, Wallhey_98, Chorkpop_98, Surely_97, Fozzie_93, Lulumae_92, Kwksand96_98, Pinkman_96, MrPhizzler_96, Rimu_100,

- Roy17_94, Valjean_95, Megamind20_99, Virgeve_95, Zonia_97
- Track 3 : Carthage_97
 - Track 4 : Harvey_94, Dingo_93, Soto_93, Pipsqueak_94, Mikota_91, Basato_95, Kloppinator_97
 - Track 5 : Chunky_95, HSavage_94, Boehler_94
 - Track 6 : Pops_94
 - Track 7 : SDcharge11_95, Daka_98
 - Track 8 : Labeouficaum_97, Phleuron_94, Derpp_96, Maskar_98, CharlieGBrown_95, ImtiyazSitla_98, MelsMeow_95, Mag7_95, BatteryCK_95, Ashraf_98, MichaelPhcott_95, Chaelin_97, Schueller_96, Veritas_96, Windsor_96, Magic8_96, Kailash_95, TyrionL_97
 - Track 9 : Lopsy_93, Tooj_94, Eremos_94
 - Track 10 : Roliet_94
 - Track 11 : Cornobble_95, Aelin_96, Antonia_96, OSmaximus_97, RedMaple_95, Schadenfreude_97
 - Track 12 : Kikipoo_99, Gwilliam_97, AltPhacts_94, IsaacEli_99
 - Track 13 : DuchessDung_94
 - Track 14 : Roscoe_95
 - Track 15 : Frankicide_94
 - Track 16 : Apizium_95
 - Track 17 : BlueHusk_97
 - Track 18 : MiniBoss_92
 - Track 19 : Hartsy_95
 - Track 20 : Horchata_91
 - Track 21 : KingVeVeVe_95
 - Track 22 : Indlovu_88
 - Track 23 : Zenteno07_105
 - Track 24 : DigitDog_91, Shenyu_90, Nangang_90

Summary of Final Annotations (See graph section above for start numbers):

The start number called the most often in the published annotations is 5, it was called in 253 of the 261 non-draft genes in the pham.

Genes that call this "Most Annotated" start:

- ABU_95, AbsoluteMadLad_95, Adriana_97, Aelin_96, AltPhacts_94, Altwerkus_94, Anderson_98, Andre_101, Antonia_96, Apizium_95, Ashraf_98, Badfish_97, Banjo_93, Basato_95, BatteryCK_95, Beaglebox_93, Bishoperium_97, BlackStallion_96, Bluephacebaby_96, Brilliant_100, Buckeye_95, Burr_99, CamL_97, CampRoach_97, Cannibal_97, Carthage_97, Chaelin_97, Chah_99, Charles1_100, CharlieGBrown_95, CheetO_93, Cher_97, Childish_97, Chorkpop_98, Chute_97, Cobra_97, Colbert_95, Coletti_99, Cornobble_95, Cosmolli16_98, Craff_98, Crownjwl_94, DaddyDaniels_100, Daffy_96, Daka_98, Dati_94, DelRivs_96, Derpp_96, Dice_97, Dingo_93, Dione_95, DirtJuice_98, Doddsville_94, DoesntMatter_94, DonSanchon_92, DuchessDung_94, Duggie_97, Durga_99, Emiris_99, EmpTee_96, Eremos_94, Etaye_96, Eugenia_99, Fang_97, FluffyNinja_98, Fozzie_93, Frankicide_94, Freya_93, FriarPreacher_94, Fringe_101, FugateOSU_97, Gareth_97, GeneCoco_96, Giraffe_98, Gophee_96, Grand2040_94, Gwilliam_97, Haimas_94, Haleema_96, Hamish_94, Hartsy_95, Harvey_94, Held_95, HenryJackson_97, Hertubise_96, Hetaeria_96, HighStump_99, Hocus_96,

ImtiyazSitla_98, Inchworm_98, Inverness_94, Iridoclysis_96, IsaacEli_99, JDog_96, JacAttac_97, JakeO_98, JangoPhett_95, Jillium_97, Jiminy_97, Jiraiya_102, KLucky39_94, Kahve_97, Kailash_95, Katniss_99, Keitherie_100, Kikipoo_99, Kimbrough_98, KingTut_87, KingVeVeVe_95, KlimbOn_96, Kloppinator_97, Kwadwo_96, Kwksand96_98, Labeouficaum_97, LasagnaCat_98, Lasso_96, LeeLot_95, Lego3393_95, Legolas_98, LeiMonet_99, LemonSlice_97, Longacauda_97, Lopsy_93, LostAndPhound_96, LuckyMarjie_94, Lulumae_92, Lulwa_94, Lumine_98, MRabcd_97, Mag7_95, Magic8_96, Mana_94, Manad_96, Maru_96, Maskar_98, Matalotodo_95, Mcshane_99, Mecca_97, Megamind20_99, Megatron_98, Melc17_94, MelsMeow_95, Mesh1_97, MichaelPhcott_95, Mikota_91, MiniBoss_92, MitKao_97, Morgushi_94, Morty_97, Mosaic_94, MrPhizzler_96, Mulan_96, Murdoc_93, Mutante_98, Nacho_0099, Newman_92, Nicole21_98, Numberten_97, Nyala_97, OSmaximus_97, Olak_99, Oline_96, Olive_93, OliverWalter_96, Omniscient_98, Oosterbaan_97, Orfeu_97, Orion_95, Orwigg_99, PG1_95, Pacifista_99, Phamished_96, Phareon_94, PhatCats2014_96, PhatLouie_99, PhenghisKhan_97, Pherdinand_98, Phergie_97, Phipps_94, Phleuron_94, PhrankReynolds_95, PhrodoBaggins_99, Phunky_94, Piglet_0096, PinheadLarry_96, Pinkman_96, Pipsqueak_94, Placalicious_94, Plmatters_94, Podrick_95, Potter_91, Prickles_97, ProfessorX_94, Puhltonio_92, QueenBeane_97, Quisquillae_99, RedMaple_95, Ricotta_98, Riggan_98, Rimu_100, Roliet_94, Roscoe_95, Roy17_94, SDcharge11_95, Samaymay_97, SassyCat97_95, Schadenfreude_97, Schueller_96, Scoot17C_97, Scrick_98, Selr12_101, Serendipity_96, Serpentine_0099, Sheila_91, ShiVal_96, Sigman_96, SilverBell_98, Simielle_97, Skippy_97, Slatt_99, Soile_98, Solosis_95, Sophia_95, Soto_93, Spartan300_96, Squid_96, Squiggle_96, Struggle_97, Suffolk_92, Surely_97, Swiphy_101, Swish_98, TallGrassMM_96, Telesworld_95, Thora_95, ThreeOh3D2_98, Thunderbird_97, Timmi_95, TomBombadil_97, Tomlarah_97, Toni_96, Tooj_94, True_98, Trypo_97, TyrionL_97, UAch1_97, UncleHowie_93, Usavi_97, Valjean_95, Vaticameos_94, Veritas_96, Virapocalypse_98, Virgeve_95, Vista_96, Vortex_95, Wallhey_98, Waterdiva_98, Weher20_94, Windsor_96, Xavier_96, Yoshand_98, YouGoGlencoco_97, Zaider_98, Zelda_97, Zonia_97,

Genes that have the "Most Annotated" start but do not call it:

-

Genes that do not have the "Most Annotated" start:

- BlueHusk_97, Boehler_94, Chunky_95, DigitDog_91, HSavage_94, Horchata_91, Indlovu_88, Nangang_90, Pops_94, Shenyu_90, Zenteno07_105,

Summary by start number:

Start 5:

- Found in 265 of 276 (96.0%) of genes in pham
- Manual Annotations of this start: 253 of 261
- Called 100.0% of time when present
- Phage (with cluster) where this start called: ABU_95 (B1), AbsoluteMadLad_95 (B1), Adriana_97 (B1), Aelin_96 (B1), AltPhacts_94 (B1), Altwerkus_94 (B1), Anderson_98 (B1), Andre_101 (B1), Antonia_96 (B1), Apizium_95 (B1), Ashraf_98 (B1), Badfish_97 (B1), Banjo_93 (B1), Basato_95 (B1), BatteryCK_95 (B1), Beaglebox_93 (B1), Bishoperium_97 (B1), BlackStallion_96 (B1), Bluephacebaby_96 (B1), Brilliant_100 (B1), Buckeye_95 (B1), Burr_99 (B1), CamL_97 (B1), CampRoach_97 (B1), Cannibal_97 (B1), Carthage_97 (B1), Chaelin_97 (B1), Chah_99 (B1), Charles1_100 (B1), CharlieGBrown_95 (B1), CheetO_93 (B1),

Cher_97 (B1), Childish_97 (B1), Chorkpop_98 (B1), Chute_97 (B1), Cobra_97 (B1), Colbert_95 (B1), Coletti_99 (B1), Cornobble_95 (B1), Cosmolli16_98 (B1), Craff_98 (B1), Crownjwl_94 (B1), DaddyDaniels_100 (B1), Daffy_96 (B1), Daka_98 (B1), Dati_94 (B1), DelRivs_96 (B1), Derpp_96 (B1), Dice_97 (B1), Dingo_93 (B1), Dione_95 (B1), DirtJuice_98 (B1), Doddsville_94 (B1), DoesntMatter_94 (B1), DonSanchon_92 (B1), DuchessDung_94 (B1), Duggie_97 (B1), Durga_99 (B1), Emiris_99 (B1), EmpTee_96 (B1), Eremos_94 (B1), Etaye_96 (B1), Eugenia_99 (B1), Fang_97 (B1), FluffyNinja_98 (B1), Fozzie_93 (B1), Frankicide_94 (B1), Freya_93 (B1), FriarPreacher_94 (B1), Fringe_101 (B1), FugateOSU_97 (B1), Gareth_97 (B1), GeneCoco_96 (B1), Giraffe_98 (B1), Gophee_96 (B1), Grand2040_94 (B1), Gwilliam_97 (B1), Haimas_94 (B1), Haleema_96 (B1), Hamish_94 (B1), Hartsy_95 (B1), Harvey_94 (B1), Held_95 (B1), HenryJackson_97 (B1), Hertubise_96 (B1), Hetaeria_96 (B1), HighStump_99 (B1), Hocus_96 (B1), ImtiyazSitla_98 (B1), Inchworm_98 (B1), Inverness_94 (B1), Iridoclysis_96 (B1), IsaacEli_99 (B1), JDog_96 (B1), JacAttac_97 (B1), JakeO_98 (B1), JangoPhett_95 (B1), Jillium_97 (B1), Jiminy_97 (B1), Jiraiya_102 (B1), KLucky39_94 (B1), Kahve_97 (B1), Kailash_95 (B1), Katniss_99 (B1), Keitherie_100 (B1), Kikipoo_99 (B1), Kimbrough_98 (B1), KingTut_87 (B1), KingVeVeVe_95 (B1), KlimbOn_96 (B1), Kloppinator_97 (B1), Kwadwo_96 (B1), Kwksand96_98 (B1), Labeouficaum_97 (B1), LasagnaCat_98 (B1), Lasso_96 (B1), LeeLot_95 (B1), Lego3393_95 (B1), Legolas_98 (B1), LeiMonet_99 (B1), LemonSlice_97 (B1), Longacauda_97 (B1), Lopsy_93 (B1), LostAndPhound_96 (B1), LuckyMarjie_94 (B1), Lulumae_92 (B1), Lulwa_94 (B1), Lumine_98 (B1), MRabcd_97 (B1), Mag7_95 (B1), Magic8_96 (B1), Mana_94 (B1), Manad_96 (B1), Maru_96 (B1), Maskar_98 (B1), Matalotodo_95 (B1), Mcshane_99 (B1), Mecca_97 (B1), Megamind20_99 (B1), Megatron_98 (B1), Melc17_94 (B1), MelsMeow_95 (B1), Mesh1_97 (B1), MichaelPhcott_95 (B1), Mikota_91 (B1), MiniBoss_92 (B1), MitKao_97 (B1), Morgushi_94 (B1), Morty_97 (B1), Mosaic_94 (B1), MrPhizzler_96 (B1), Mulan_96 (B1), Murdoc_93 (B1), Mutante_98 (B1), Nacho_0099 (B1), Newman_92 (B1), Nicole21_98 (B1), Numberten_97 (B1), Nyala_97 (B1), OSmaximus_97 (B1), Olak_99 (B1), Oline_96 (B1), Olive_93 (B1), OliverWalter_96 (B1), Omniscient_98 (B1), Oosterbaan_97 (B1), Orfeu_97 (B1), Orion_95 (B1), Orwigg_99 (B1), PG1_95 (B1), Pacifista_99 (B1), Phamished_96 (B1), Phareon_94 (B1), PhatCats2014_96 (B1), PhatLouie_99 (B1), PhenghisKhan_97 (B1), Pherdinand_98 (B1), Phergie_97 (B1), Phipps_94 (B1), Phleuron_94 (B1), PhrankReynolds_95 (B1), PhrodoBaggins_99 (B1), Phunky_94 (B1), Piglet_0096 (B1), PinheadLarry_96 (B1), Pinkman_96 (B1), Pipsqueak_94 (B1), Placalicious_94 (B1), Plmatters_94 (B1), Podrick_95 (B1), Potter_91 (B1), Prickles_97 (B1), ProfessorX_94 (B1), Puhltonio_92 (B1), QueenBeane_97 (B1), Quisquillae_99 (B1), RedMaple_95 (B1), Ricotta_98 (B1), Riggan_98 (B1), Rimu_100 (B1), Roliet_94 (B1), Roscoe_95 (B1), Roy17_94 (B1), SDcharge11_95 (B1), Samaymay_97 (B1), SassyCat97_95 (B1), Schadenfreude_97 (B1), Schueller_96 (B1), Scoot17C_97 (B1), Scrick_98 (B1), Selr12_101 (B1), Serendipity_96 (B1), Serpentine_0099 (B1), Sheila_91 (B1), ShiVal_96 (B1), Sigman_96 (B1), SilverBell_98 (B1), Simielle_97 (B1), Skippy_97 (B1), Slatt_99 (B1), Soile_98 (B1), Solosis_95 (B1), Sophia_95 (B1), Soto_93 (B1), Spartan300_96 (B1), Squid_96 (B1), Squiggle_96 (B1), Struggle_97 (B1), Suffolk_92 (B1), Surely_97 (B1), Swiphy_101 (B1), Swish_98 (B1), TallGrassMM_96 (B1), Telesworld_95 (B1), Thora_95 (B1), ThreeOh3D2_98 (B1), Thunderbird_97 (B1), Timmi_95 (B1), TomBombadil_97 (B1), Tomlarah_97 (B1), Toni_96 (B1), Tooj_94 (B1), True_98 (B1), Trypo_97 (B1), TyrionL_97 (B1), UAch1_97 (B1), UncleHowie_93 (B1), Usavi_97 (B1), Valjean_95 (B1), Vaticameos_94 (B1), Veritas_96 (B1), Virapocalypse_98 (B1), Virgeve_95 (B1), Vista_96 (B1), Vortex_95 (B1), Wallhey_98 (B1), Waterdiva_98 (B1), Weher20_94 (B1), Windsor_96 (B1), Xavier_96 (B1), Yoshand_98 (B1), YouGoGlencoco_97 (B1),

Zaider_98 (B1), Zelda_97 (B1), Zonia_97 (B1),

Start 6:

- Found in 265 of 276 (96.0%) of genes in pham
- Manual Annotations of this start: 2 of 261
- Called 0.8% of time when present
- Phage (with cluster) where this start called: BlueHusk_97 (B1), Horchata_91 (B1),

Start 10:

- Found in 1 of 276 (0.4%) of genes in pham
- Manual Annotations of this start: 1 of 261
- Called 100.0% of time when present
- Phage (with cluster) where this start called: Zenteno07_105 (B13),

Start 11:

- Found in 250 of 276 (90.6%) of genes in pham
- Manual Annotations of this start: 3 of 261
- Called 1.2% of time when present
- Phage (with cluster) where this start called: Boehler_94 (B1), Chunky_95 (B1), HSavage_94 (B1),

Start 12:

- Found in 275 of 276 (99.6%) of genes in pham
- Manual Annotations of this start: 1 of 261
- Called 1.5% of time when present
- Phage (with cluster) where this start called: DigitDog_91 (B5), Nangang_90 (B5), Pops_94 (B1), Shenyu_90 (B5),

Start 13:

- Found in 1 of 276 (0.4%) of genes in pham
- Manual Annotations of this start: 1 of 261
- Called 100.0% of time when present
- Phage (with cluster) where this start called: Indlovu_88 (B11),

Summary by clusters:

There are 4 clusters represented in this pham: B5, B11, B1, B13,

Info for manual annotations of cluster B1:

- Start number 5 was manually annotated 253 times for cluster B1.
- Start number 6 was manually annotated 2 times for cluster B1.
- Start number 11 was manually annotated 3 times for cluster B1.
- Start number 12 was manually annotated 1 time for cluster B1.

Info for manual annotations of cluster B11:

- Start number 13 was manually annotated 1 time for cluster B11.

Info for manual annotations of cluster B13:

- Start number 10 was manually annotated 1 time for cluster B13.

Gene Information:

Gene: ABU_95 Start: 67275, Stop: 66544, Start Num: 5

Candidate Starts for ABU_95:

(Start: 5 @67275 has 253 MA's), (Start: 6 @67236 has 2 MA's), (7, 67209), (Start: 11 @67122 has 3 MA's), (Start: 12 @67083 has 1 MA's), (14, 67041), (17, 66915), (19, 66894), (20, 66882), (22, 66810), (27, 66696), (30, 66657), (32, 66639),

Gene: AbsoluteMadLad_95 Start: 67228, Stop: 66497, Start Num: 5

Candidate Starts for AbsoluteMadLad_95:

(Start: 5 @67228 has 253 MA's), (Start: 6 @67189 has 2 MA's), (7, 67162), (Start: 11 @67075 has 3 MA's), (Start: 12 @67036 has 1 MA's), (14, 66994), (17, 66868), (19, 66847), (20, 66835), (22, 66763), (27, 66649), (30, 66610), (32, 66592),

Gene: Adriana_97 Start: 67547, Stop: 66816, Start Num: 5

Candidate Starts for Adriana_97:

(Start: 5 @67547 has 253 MA's), (Start: 6 @67508 has 2 MA's), (7, 67481), (Start: 11 @67394 has 3 MA's), (Start: 12 @67355 has 1 MA's), (14, 67313), (17, 67187), (19, 67166), (20, 67154), (22, 67082), (27, 66968), (30, 66929), (32, 66911),

Gene: Aelin_96 Start: 66908, Stop: 66177, Start Num: 5

Candidate Starts for Aelin_96:

(3, 67127), (4, 67025), (Start: 5 @66908 has 253 MA's), (Start: 6 @66869 has 2 MA's), (7, 66842), (9, 66806), (Start: 11 @66755 has 3 MA's), (Start: 12 @66716 has 1 MA's), (17, 66548), (19, 66527), (20, 66515), (22, 66443), (27, 66329), (30, 66290), (32, 66272),

Gene: AltPhacts_94 Start: 66481, Stop: 65750, Start Num: 5

Candidate Starts for AltPhacts_94:

(3, 66700), (4, 66598), (Start: 5 @66481 has 253 MA's), (Start: 6 @66442 has 2 MA's), (7, 66415), (Start: 11 @66328 has 3 MA's), (Start: 12 @66289 has 1 MA's), (14, 66247), (17, 66121), (19, 66100), (20, 66088), (22, 66016), (27, 65902), (30, 65863), (32, 65845),

Gene: Altwerkus_94 Start: 66604, Stop: 65873, Start Num: 5

Candidate Starts for Altwerkus_94:

(Start: 5 @66604 has 253 MA's), (Start: 6 @66565 has 2 MA's), (7, 66538), (Start: 11 @66451 has 3 MA's), (Start: 12 @66412 has 1 MA's), (14, 66370), (17, 66244), (19, 66223), (20, 66211), (22, 66139), (27, 66025), (30, 65986), (32, 65968),

Gene: Anderson_98 Start: 67151, Stop: 66420, Start Num: 5

Candidate Starts for Anderson_98:

(Start: 5 @67151 has 253 MA's), (Start: 6 @67112 has 2 MA's), (7, 67085), (Start: 11 @66998 has 3 MA's), (Start: 12 @66959 has 1 MA's), (14, 66917), (17, 66791), (19, 66770), (20, 66758), (22, 66686), (27, 66572), (30, 66533), (32, 66515),

Gene: Andre_101 Start: 67542, Stop: 66811, Start Num: 5

Candidate Starts for Andre_101:

(Start: 5 @67542 has 253 MA's), (Start: 6 @67503 has 2 MA's), (7, 67476), (Start: 11 @67389 has 3 MA's), (Start: 12 @67350 has 1 MA's), (14, 67308), (17, 67182), (19, 67161), (20, 67149), (22, 67077), (27, 66963), (30, 66924), (32, 66906),

Gene: Antonia_96 Start: 66776, Stop: 66045, Start Num: 5

Candidate Starts for Antonia_96:

(3, 66995), (4, 66893), (Start: 5 @66776 has 253 MA's), (Start: 6 @66737 has 2 MA's), (7, 66710), (9, 66674), (Start: 11 @66623 has 3 MA's), (Start: 12 @66584 has 1 MA's), (17, 66416), (19, 66395), (20, 66383), (22, 66311), (27, 66197), (30, 66158), (32, 66140),

Gene: Apizium_95 Start: 66429, Stop: 65698, Start Num: 5

Candidate Starts for Apizium_95:

(1, 66681), (3, 66648), (4, 66546), (Start: 5 @66429 has 253 MA's), (Start: 6 @66390 has 2 MA's), (7, 66363), (Start: 11 @66276 has 3 MA's), (Start: 12 @66237 has 1 MA's), (17, 66069), (19, 66048), (20, 66036), (22, 65964), (27, 65850), (30, 65811), (32, 65793),

Gene: Ashraf_98 Start: 67284, Stop: 66532, Start Num: 5

Candidate Starts for Ashraf_98:

(3, 67503), (4, 67401), (Start: 5 @67284 has 253 MA's), (Start: 6 @67245 has 2 MA's), (Start: 11 @67131 has 3 MA's), (Start: 12 @67092 has 1 MA's), (17, 66924), (19, 66903), (20, 66891), (22, 66819), (27, 66705), (30, 66666), (32, 66648),

Gene: Badfish_97 Start: 67455, Stop: 66724, Start Num: 5

Candidate Starts for Badfish_97:

(Start: 5 @67455 has 253 MA's), (Start: 6 @67416 has 2 MA's), (7, 67389), (Start: 11 @67302 has 3 MA's), (Start: 12 @67263 has 1 MA's), (14, 67221), (17, 67095), (19, 67074), (20, 67062), (22, 66990), (27, 66876), (30, 66837), (32, 66819),

Gene: Banjo_93 Start: 66721, Stop: 65990, Start Num: 5

Candidate Starts for Banjo_93:

(Start: 5 @66721 has 253 MA's), (Start: 6 @66682 has 2 MA's), (7, 66655), (Start: 11 @66568 has 3 MA's), (Start: 12 @66529 has 1 MA's), (14, 66487), (17, 66361), (19, 66340), (20, 66328), (22, 66256), (27, 66142), (30, 66103), (32, 66085),

Gene: Basato_95 Start: 66941, Stop: 66210, Start Num: 5

Candidate Starts for Basato_95:

(Start: 5 @66941 has 253 MA's), (Start: 6 @66902 has 2 MA's), (7, 66875), (Start: 11 @66788 has 3 MA's), (Start: 12 @66749 has 1 MA's), (17, 66581), (19, 66560), (20, 66548), (22, 66476), (27, 66362), (30, 66323), (32, 66305),

Gene: BatteryCK_95 Start: 66711, Stop: 65980, Start Num: 5

Candidate Starts for BatteryCK_95:

(3, 66930), (4, 66828), (Start: 5 @66711 has 253 MA's), (Start: 6 @66672 has 2 MA's), (Start: 11 @66558 has 3 MA's), (Start: 12 @66519 has 1 MA's), (17, 66351), (19, 66330), (20, 66318), (22, 66246), (27, 66132), (30, 66093), (32, 66075),

Gene: Beaglebox_93 Start: 66843, Stop: 66112, Start Num: 5

Candidate Starts for Beaglebox_93:

(Start: 5 @66843 has 253 MA's), (Start: 6 @66804 has 2 MA's), (7, 66777), (Start: 11 @66690 has 3 MA's), (Start: 12 @66651 has 1 MA's), (14, 66609), (17, 66483), (19, 66462), (20, 66450), (22, 66378), (27, 66264), (30, 66225), (32, 66207),

Gene: Bishoperium_97 Start: 67290, Stop: 66559, Start Num: 5

Candidate Starts for Bishoperium_97:

(Start: 5 @67290 has 253 MA's), (Start: 6 @67251 has 2 MA's), (7, 67224), (Start: 11 @67137 has 3 MA's), (Start: 12 @67098 has 1 MA's), (14, 67056), (17, 66930), (19, 66909), (20, 66897), (22, 66825), (27, 66711), (30, 66672), (32, 66654),

Gene: BlackStallion_96 Start: 67139, Stop: 66408, Start Num: 5

Candidate Starts for BlackStallion_96:

(Start: 5 @67139 has 253 MA's), (Start: 6 @67100 has 2 MA's), (7, 67073), (Start: 11 @66986 has 3 MA's), (Start: 12 @66947 has 1 MA's), (14, 66905), (17, 66779), (19, 66758), (20, 66746), (22, 66674), (27, 66560), (30, 66521), (32, 66503),

Gene: BlueHusk_97 Start: 66586, Stop: 65990, Start Num: 6

Candidate Starts for BlueHusk_97:

(Start: 6 @66586 has 2 MA's), (Start: 12 @66529 has 1 MA's), (14, 66487), (17, 66361), (19, 66340), (20, 66328), (22, 66256), (27, 66142), (30, 66103), (32, 66085),

Gene: Bluephacebaby_96 Start: 67324, Stop: 66593, Start Num: 5

Candidate Starts for Bluephacebaby_96:

(Start: 5 @67324 has 253 MA's), (Start: 6 @67285 has 2 MA's), (7, 67258), (Start: 11 @67171 has 3 MA's), (Start: 12 @67132 has 1 MA's), (14, 67090), (17, 66964), (19, 66943), (20, 66931), (22, 66859), (27, 66745), (30, 66706), (32, 66688),

Gene: Boehler_94 Start: 66718, Stop: 66140, Start Num: 11

Candidate Starts for Boehler_94:

(Start: 11 @66718 has 3 MA's), (Start: 12 @66679 has 1 MA's), (14, 66637), (17, 66511), (19, 66490), (20, 66478), (22, 66406), (27, 66292), (30, 66253), (32, 66235),

Gene: Brilliant_100 Start: 67303, Stop: 66572, Start Num: 5

Candidate Starts for Brilliant_100:

(Start: 5 @67303 has 253 MA's), (Start: 6 @67264 has 2 MA's), (7, 67237), (Start: 11 @67150 has 3 MA's), (Start: 12 @67111 has 1 MA's), (14, 67069), (17, 66943), (19, 66922), (20, 66910), (22, 66838), (27, 66724), (30, 66685), (32, 66667),

Gene: Buckeye_95 Start: 67599, Stop: 66868, Start Num: 5

Candidate Starts for Buckeye_95:

(Start: 5 @67599 has 253 MA's), (Start: 6 @67560 has 2 MA's), (7, 67533), (Start: 11 @67446 has 3 MA's), (Start: 12 @67407 has 1 MA's), (14, 67365), (17, 67239), (19, 67218), (20, 67206), (22, 67134), (27, 67020), (30, 66981), (32, 66963),

Gene: Burr_99 Start: 67145, Stop: 66414, Start Num: 5

Candidate Starts for Burr_99:

(Start: 5 @67145 has 253 MA's), (Start: 6 @67106 has 2 MA's), (7, 67079), (Start: 11 @66992 has 3 MA's), (Start: 12 @66953 has 1 MA's), (14, 66911), (17, 66785), (19, 66764), (20, 66752), (22, 66680), (27, 66566), (30, 66527), (32, 66509),

Gene: CamL_97 Start: 67075, Stop: 66344, Start Num: 5

Candidate Starts for CamL_97:

(Start: 5 @67075 has 253 MA's), (Start: 6 @67036 has 2 MA's), (7, 67009), (Start: 11 @66922 has 3 MA's), (Start: 12 @66883 has 1 MA's), (14, 66841), (17, 66715), (19, 66694), (20, 66682), (22, 66610), (27, 66496), (30, 66457), (32, 66439),

Gene: CampRoach_97 Start: 67171, Stop: 66440, Start Num: 5

Candidate Starts for CampRoach_97:

(Start: 5 @67171 has 253 MA's), (Start: 6 @67132 has 2 MA's), (7, 67105), (Start: 12 @66979 has 1 MA's), (14, 66937), (17, 66811), (19, 66790), (20, 66778), (22, 66706), (27, 66592), (30, 66553), (32, 66535),

Gene: Cannibal_97 Start: 67178, Stop: 66447, Start Num: 5

Candidate Starts for Cannibal_97:

(Start: 5 @67178 has 253 MA's), (Start: 6 @67139 has 2 MA's), (7, 67112), (Start: 11 @67025 has 3 MA's), (Start: 12 @66986 has 1 MA's), (14, 66944), (17, 66818), (19, 66797), (20, 66785), (22, 66713), (27, 66599), (30, 66560), (32, 66542),

Gene: Carthage_97 Start: 66633, Stop: 65902, Start Num: 5

Candidate Starts for Carthage_97:

(Start: 5 @66633 has 253 MA's), (7, 66567), (Start: 11 @66480 has 3 MA's), (Start: 12 @66441 has 1 MA's), (17, 66273), (19, 66252), (20, 66240), (27, 66054), (30, 66015), (32, 65997),

Gene: Chaelin_97 Start: 67047, Stop: 66295, Start Num: 5

Candidate Starts for Chaelin_97:

(3, 67266), (4, 67164), (Start: 5 @67047 has 253 MA's), (Start: 6 @67008 has 2 MA's), (Start: 11 @66894 has 3 MA's), (Start: 12 @66855 has 1 MA's), (17, 66687), (19, 66666), (20, 66654), (22, 66582), (27, 66468), (30, 66429), (32, 66411),

Gene: Chah_99 Start: 66875, Stop: 66144, Start Num: 5

Candidate Starts for Chah_99:

(Start: 5 @66875 has 253 MA's), (Start: 6 @66836 has 2 MA's), (7, 66809), (Start: 11 @66722 has 3 MA's), (Start: 12 @66683 has 1 MA's), (14, 66641), (17, 66515), (19, 66494), (20, 66482), (22, 66410), (27, 66296), (30, 66257), (32, 66239),

Gene: Charles1_100 Start: 67453, Stop: 66722, Start Num: 5

Candidate Starts for Charles1_100:

(Start: 5 @67453 has 253 MA's), (Start: 6 @67414 has 2 MA's), (7, 67387), (Start: 11 @67300 has 3 MA's), (Start: 12 @67261 has 1 MA's), (14, 67219), (17, 67093), (19, 67072), (20, 67060), (22, 66988), (27, 66874), (30, 66835), (32, 66817),

Gene: CharlieGBrown_95 Start: 66806, Stop: 66075, Start Num: 5

Candidate Starts for CharlieGBrown_95:

(3, 67025), (4, 66923), (Start: 5 @66806 has 253 MA's), (Start: 6 @66767 has 2 MA's), (Start: 11 @66653 has 3 MA's), (Start: 12 @66614 has 1 MA's), (17, 66446), (19, 66425), (20, 66413), (22, 66341), (27, 66227), (30, 66188), (32, 66170),

Gene: CheetO_93 Start: 66925, Stop: 66194, Start Num: 5

Candidate Starts for CheetO_93:

(Start: 5 @66925 has 253 MA's), (Start: 6 @66886 has 2 MA's), (7, 66859), (Start: 11 @66772 has 3 MA's), (Start: 12 @66733 has 1 MA's), (14, 66691), (17, 66565), (19, 66544), (20, 66532), (22, 66460), (27, 66346), (30, 66307), (32, 66289),

Gene: Cher_97 Start: 67279, Stop: 66548, Start Num: 5

Candidate Starts for Cher_97:

(Start: 5 @67279 has 253 MA's), (Start: 6 @67240 has 2 MA's), (7, 67213), (Start: 11 @67126 has 3 MA's), (Start: 12 @67087 has 1 MA's), (14, 67045), (17, 66919), (19, 66898), (20, 66886), (22, 66814), (27, 66700), (30, 66661), (32, 66643),

Gene: Childish_97 Start: 67469, Stop: 66738, Start Num: 5

Candidate Starts for Childish_97:

(Start: 5 @67469 has 253 MA's), (Start: 6 @67430 has 2 MA's), (7, 67403), (Start: 11 @67316 has 3 MA's), (Start: 12 @67277 has 1 MA's), (14, 67235), (17, 67109), (19, 67088), (20, 67076), (22, 67004), (27, 66890), (30, 66851), (32, 66833),

Gene: Chorkpop_98 Start: 66931, Stop: 66200, Start Num: 5

Candidate Starts for Chorkpop_98:

(Start: 5 @66931 has 253 MA's), (Start: 6 @66892 has 2 MA's), (7, 66865), (Start: 12 @66739 has 1 MA's), (14, 66697), (17, 66571), (19, 66550), (20, 66538), (22, 66466), (27, 66352), (30, 66313), (32, 66295),

Gene: Chunky_95 Start: 66380, Stop: 65802, Start Num: 11

Candidate Starts for Chunky_95:

(Start: 11 @66380 has 3 MA's), (Start: 12 @66341 has 1 MA's), (14, 66299), (17, 66173), (19, 66152), (20, 66140), (22, 66068), (27, 65954), (30, 65915), (32, 65897),

Gene: Chute_97 Start: 67470, Stop: 66739, Start Num: 5

Candidate Starts for Chute_97:

(Start: 5 @67470 has 253 MA's), (Start: 6 @67431 has 2 MA's), (7, 67404), (Start: 11 @67317 has 3 MA's), (Start: 12 @67278 has 1 MA's), (14, 67236), (17, 67110), (19, 67089), (20, 67077), (22, 67005), (27, 66891), (30, 66852), (32, 66834),

Gene: Cobra_97 Start: 67300, Stop: 66569, Start Num: 5

Candidate Starts for Cobra_97:

(Start: 5 @67300 has 253 MA's), (Start: 6 @67261 has 2 MA's), (7, 67234), (Start: 11 @67147 has 3 MA's), (Start: 12 @67108 has 1 MA's), (14, 67066), (17, 66940), (19, 66919), (20, 66907), (22, 66835), (27, 66721), (30, 66682), (32, 66664),

Gene: Colbert_95 Start: 66199, Stop: 65468, Start Num: 5

Candidate Starts for Colbert_95:

(Start: 5 @66199 has 253 MA's), (Start: 6 @66160 has 2 MA's), (7, 66133), (Start: 11 @66046 has 3 MA's), (Start: 12 @66007 has 1 MA's), (14, 65965), (17, 65839), (19, 65818), (20, 65806), (22, 65734), (27, 65620), (30, 65581), (32, 65563),

Gene: Coletti_99 Start: 67826, Stop: 67095, Start Num: 5

Candidate Starts for Coletti_99:

(Start: 5 @67826 has 253 MA's), (Start: 6 @67787 has 2 MA's), (7, 67760), (Start: 11 @67673 has 3 MA's), (Start: 12 @67634 has 1 MA's), (14, 67592), (17, 67466), (19, 67445), (20, 67433), (22, 67361), (27, 67247), (30, 67208), (32, 67190),

Gene: Cornobble_95 Start: 66927, Stop: 66196, Start Num: 5

Candidate Starts for Cornobble_95:

(3, 67146), (4, 67044), (Start: 5 @66927 has 253 MA's), (Start: 6 @66888 has 2 MA's), (7, 66861), (9, 66825), (Start: 11 @66774 has 3 MA's), (Start: 12 @66735 has 1 MA's), (17, 66567), (19, 66546), (20, 66534), (22, 66462), (27, 66348), (30, 66309), (32, 66291),

Gene: Cosmolli16_98 Start: 67403, Stop: 66672, Start Num: 5

Candidate Starts for Cosmolli16_98:

(Start: 5 @67403 has 253 MA's), (Start: 6 @67364 has 2 MA's), (7, 67337), (Start: 11 @67250 has 3 MA's), (Start: 12 @67211 has 1 MA's), (14, 67169), (17, 67043), (19, 67022), (20, 67010), (22, 66938), (27, 66824), (30, 66785), (32, 66767),

Gene: Craff_98 Start: 67688, Stop: 66957, Start Num: 5

Candidate Starts for Craff_98:

(Start: 5 @67688 has 253 MA's), (Start: 6 @67649 has 2 MA's), (7, 67622), (Start: 11 @67535 has 3 MA's), (Start: 12 @67496 has 1 MA's), (14, 67454), (17, 67328), (19, 67307), (20, 67295), (22, 67223), (27, 67109), (30, 67070), (32, 67052),

Gene: Crownjwl_94 Start: 66943, Stop: 66212, Start Num: 5

Candidate Starts for Crownjwl_94:

(Start: 5 @66943 has 253 MA's), (Start: 6 @66904 has 2 MA's), (7, 66877), (Start: 11 @66790 has 3 MA's), (Start: 12 @66751 has 1 MA's), (14, 66709), (17, 66583), (19, 66562), (20, 66550), (22, 66478), (27, 66364), (30, 66325), (32, 66307),

Gene: DaddyDaniels_100 Start: 67422, Stop: 66691, Start Num: 5

Candidate Starts for DaddyDaniels_100:

(Start: 5 @67422 has 253 MA's), (Start: 6 @67383 has 2 MA's), (7, 67356), (Start: 11 @67269 has 3 MA's), (Start: 12 @67230 has 1 MA's), (14, 67188), (17, 67062), (19, 67041), (20, 67029), (22, 66957), (27, 66843), (30, 66804), (32, 66786),

Gene: Daffy_96 Start: 66916, Stop: 66185, Start Num: 5

Candidate Starts for Daffy_96:

(Start: 5 @66916 has 253 MA's), (Start: 6 @66877 has 2 MA's), (7, 66850), (Start: 11 @66763 has 3 MA's), (Start: 12 @66724 has 1 MA's), (14, 66682), (17, 66556), (19, 66535), (20, 66523), (22, 66451), (27, 66337), (30, 66298), (32, 66280),

Gene: Daka_98 Start: 66879, Stop: 66148, Start Num: 5

Candidate Starts for Daka_98:

(3, 67098), (4, 66996), (Start: 5 @66879 has 253 MA's), (Start: 6 @66840 has 2 MA's), (7, 66813), (9, 66777), (Start: 11 @66726 has 3 MA's), (Start: 12 @66687 has 1 MA's), (17, 66519), (19, 66498), (20, 66486), (27, 66300), (30, 66261), (32, 66243),

Gene: Dati_94 Start: 67101, Stop: 66370, Start Num: 5

Candidate Starts for Dati_94:

(Start: 5 @67101 has 253 MA's), (Start: 6 @67062 has 2 MA's), (7, 67035), (Start: 11 @66948 has 3 MA's), (Start: 12 @66909 has 1 MA's), (14, 66867), (17, 66741), (19, 66720), (20, 66708), (22, 66636), (27, 66522), (30, 66483), (32, 66465),

Gene: DelRivs_96 Start: 66730, Stop: 65999, Start Num: 5

Candidate Starts for DelRivs_96:

(Start: 5 @66730 has 253 MA's), (Start: 6 @66691 has 2 MA's), (7, 66664), (Start: 11 @66577 has 3 MA's), (Start: 12 @66538 has 1 MA's), (14, 66496), (17, 66370), (19, 66349), (20, 66337), (22, 66265), (27, 66151), (30, 66112), (32, 66094),

Gene: Derpp_96 Start: 66839, Stop: 66108, Start Num: 5

Candidate Starts for Derpp_96:

(3, 67058), (4, 66956), (Start: 5 @66839 has 253 MA's), (Start: 6 @66800 has 2 MA's), (Start: 11 @66686 has 3 MA's), (Start: 12 @66647 has 1 MA's), (17, 66479), (19, 66458), (20, 66446), (22, 66374), (27, 66260), (30, 66221), (32, 66203),

Gene: Dice_97 Start: 66762, Stop: 66031, Start Num: 5

Candidate Starts for Dice_97:

(Start: 5 @66762 has 253 MA's), (Start: 6 @66723 has 2 MA's), (7, 66696), (Start: 11 @66609 has 3 MA's), (Start: 12 @66570 has 1 MA's), (14, 66528), (17, 66402), (19, 66381), (20, 66369), (22, 66297), (27, 66183), (30, 66144), (32, 66126),

Gene: DigitDog_91 Start: 66458, Stop: 65841, Start Num: 12

Candidate Starts for DigitDog_91:

(2, 66893), (8, 66563), (Start: 12 @66458 has 1 MA's), (17, 66290), (18, 66281), (24, 66173), (29, 66056), (30, 66032), (32, 66014), (36, 65921),

Gene: Dingo_93 Start: 66204, Stop: 65473, Start Num: 5

Candidate Starts for Dingo_93:

(Start: 5 @66204 has 253 MA's), (Start: 6 @66165 has 2 MA's), (7, 66138), (Start: 11 @66051 has 3 MA's), (Start: 12 @66012 has 1 MA's), (17, 65844), (19, 65823), (20, 65811), (22, 65739), (27, 65625), (30, 65586), (32, 65568),

Gene: Dione_95 Start: 66482, Stop: 65751, Start Num: 5

Candidate Starts for Dione_95:

(Start: 5 @66482 has 253 MA's), (Start: 6 @66443 has 2 MA's), (7, 66416), (Start: 11 @66329 has 3 MA's), (Start: 12 @66290 has 1 MA's), (14, 66248), (17, 66122), (19, 66101), (20, 66089), (22, 66017), (27, 65903), (30, 65864), (32, 65846),

Gene: DirtJuice_98 Start: 67591, Stop: 66860, Start Num: 5

Candidate Starts for DirtJuice_98:

(Start: 5 @67591 has 253 MA's), (Start: 6 @67552 has 2 MA's), (7, 67525), (Start: 11 @67438 has 3 MA's), (Start: 12 @67399 has 1 MA's), (14, 67357), (17, 67231), (19, 67210), (20, 67198), (22, 67126), (27, 67012), (30, 66973), (32, 66955),

Gene: Doddsville_94 Start: 66922, Stop: 66191, Start Num: 5

Candidate Starts for Doddsville_94:

(Start: 5 @66922 has 253 MA's), (Start: 6 @66883 has 2 MA's), (7, 66856), (Start: 11 @66769 has 3 MA's), (Start: 12 @66730 has 1 MA's), (14, 66688), (17, 66562), (19, 66541), (20, 66529), (22, 66457), (27, 66343), (30, 66304), (32, 66286),

Gene: DoesntMatter_94 Start: 66756, Stop: 66025, Start Num: 5

Candidate Starts for DoesntMatter_94:

(Start: 5 @66756 has 253 MA's), (Start: 6 @66717 has 2 MA's), (7, 66690), (Start: 11 @66603 has 3 MA's), (Start: 12 @66564 has 1 MA's), (14, 66522), (17, 66396), (19, 66375), (20, 66363), (22, 66291), (27, 66177), (30, 66138), (32, 66120),

Gene: DonSanchon_92 Start: 66440, Stop: 65709, Start Num: 5

Candidate Starts for DonSanchon_92:

(Start: 5 @66440 has 253 MA's), (Start: 6 @66401 has 2 MA's), (7, 66374), (Start: 11 @66287 has 3 MA's), (Start: 12 @66248 has 1 MA's), (14, 66206), (17, 66080), (19, 66059), (20, 66047), (22, 65975), (27, 65861), (30, 65822), (32, 65804),

Gene: DuchessDung_94 Start: 66437, Stop: 65706, Start Num: 5

Candidate Starts for DuchessDung_94:

(Start: 5 @66437 has 253 MA's), (Start: 6 @66398 has 2 MA's), (7, 66371), (Start: 12 @66245 has 1 MA's), (17, 66077), (19, 66056), (20, 66044), (22, 65972), (27, 65858), (30, 65819), (32, 65801),

Gene: Duggie_97 Start: 67064, Stop: 66333, Start Num: 5

Candidate Starts for Duggie_97:

(Start: 5 @67064 has 253 MA's), (Start: 6 @67025 has 2 MA's), (7, 66998), (Start: 11 @66911 has 3 MA's), (Start: 12 @66872 has 1 MA's), (14, 66830), (17, 66704), (19, 66683), (20, 66671), (22, 66599), (27, 66485), (30, 66446), (32, 66428),

Gene: Durga_99 Start: 67545, Stop: 66814, Start Num: 5

Candidate Starts for Durga_99:

(Start: 5 @67545 has 253 MA's), (Start: 6 @67506 has 2 MA's), (7, 67479), (Start: 12 @67353 has 1 MA's), (14, 67311), (17, 67185), (19, 67164), (20, 67152), (22, 67080), (27, 66966), (30, 66927), (32, 66909),

Gene: Emiris_99 Start: 67452, Stop: 66721, Start Num: 5

Candidate Starts for Emiris_99:

(Start: 5 @67452 has 253 MA's), (Start: 6 @67413 has 2 MA's), (7, 67386), (Start: 11 @67299 has 3 MA's), (Start: 12 @67260 has 1 MA's), (14, 67218), (17, 67092), (19, 67071), (20, 67059), (22, 66987), (27, 66873), (30, 66834), (32, 66816),

Gene: EmpTee_96 Start: 66853, Stop: 66122, Start Num: 5

Candidate Starts for EmpTee_96:

(Start: 5 @66853 has 253 MA's), (Start: 6 @66814 has 2 MA's), (7, 66787), (Start: 11 @66700 has 3 MA's), (Start: 12 @66661 has 1 MA's), (14, 66619), (17, 66493), (19, 66472), (20, 66460), (22, 66388), (27, 66274), (30, 66235), (32, 66217),

Gene: Eremos_94 Start: 66900, Stop: 66169, Start Num: 5

Candidate Starts for Eremos_94:

(Start: 5 @66900 has 253 MA's), (Start: 6 @66861 has 2 MA's), (7, 66834), (Start: 11 @66747 has 3 MA's), (Start: 12 @66708 has 1 MA's), (14, 66666), (17, 66540), (19, 66519), (20, 66507), (27, 66321), (30, 66282), (32, 66264),

Gene: Etaye_96 Start: 67629, Stop: 66898, Start Num: 5

Candidate Starts for Etaye_96:

(Start: 5 @67629 has 253 MA's), (Start: 6 @67590 has 2 MA's), (7, 67563), (Start: 11 @67476 has 3 MA's), (Start: 12 @67437 has 1 MA's), (14, 67395), (17, 67269), (19, 67248), (20, 67236), (22, 67164), (27, 67050), (30, 67011), (32, 66993),

Gene: Eugenia_99 Start: 67564, Stop: 66833, Start Num: 5

Candidate Starts for Eugenia_99:

(Start: 5 @67564 has 253 MA's), (Start: 6 @67525 has 2 MA's), (7, 67498), (Start: 11 @67411 has 3 MA's), (Start: 12 @67372 has 1 MA's), (14, 67330), (17, 67204), (19, 67183), (20, 67171), (22, 67099), (27, 66985), (30, 66946), (32, 66928),

Gene: Fang_97 Start: 66994, Stop: 66263, Start Num: 5

Candidate Starts for Fang_97:

(Start: 5 @66994 has 253 MA's), (Start: 6 @66955 has 2 MA's), (7, 66928), (Start: 11 @66841 has 3 MA's), (Start: 12 @66802 has 1 MA's), (14, 66760), (17, 66634), (19, 66613), (20, 66601), (22, 66529), (27, 66415), (30, 66376), (32, 66358),

Gene: FluffyNinja_98 Start: 67141, Stop: 66410, Start Num: 5

Candidate Starts for FluffyNinja_98:

(Start: 5 @67141 has 253 MA's), (Start: 6 @67102 has 2 MA's), (7, 67075), (Start: 11 @66988 has 3 MA's), (Start: 12 @66949 has 1 MA's), (14, 66907), (17, 66781), (19, 66760), (20, 66748), (22, 66676), (27, 66562), (30, 66523), (32, 66505),

Gene: Fozzie_93 Start: 67190, Stop: 66459, Start Num: 5

Candidate Starts for Fozzie_93:

(Start: 5 @67190 has 253 MA's), (Start: 6 @67151 has 2 MA's), (7, 67124), (Start: 12 @66998 has 1 MA's), (14, 66956), (17, 66830), (19, 66809), (20, 66797), (22, 66725), (27, 66611), (30, 66572), (32, 66554),

Gene: Frankicide_94 Start: 66690, Stop: 65959, Start Num: 5

Candidate Starts for Frankicide_94:

(3, 66909), (4, 66807), (Start: 5 @66690 has 253 MA's), (Start: 6 @66651 has 2 MA's), (7, 66624), (9, 66588), (Start: 11 @66537 has 3 MA's), (Start: 12 @66498 has 1 MA's), (14, 66456), (17, 66330), (19, 66309), (20, 66297), (22, 66225), (27, 66111), (30, 66072), (32, 66054),

Gene: Freya_93 Start: 66460, Stop: 65729, Start Num: 5

Candidate Starts for Freya_93:

(Start: 5 @66460 has 253 MA's), (Start: 6 @66421 has 2 MA's), (7, 66394), (Start: 11 @66307 has 3 MA's), (Start: 12 @66268 has 1 MA's), (14, 66226), (17, 66100), (19, 66079), (20, 66067), (22, 65995), (27, 65881), (30, 65842), (32, 65824),

Gene: FriarPreacher_94 Start: 66839, Stop: 66108, Start Num: 5

Candidate Starts for FriarPreacher_94:

(Start: 5 @66839 has 253 MA's), (Start: 6 @66800 has 2 MA's), (7, 66773), (Start: 11 @66686 has 3 MA's), (Start: 12 @66647 has 1 MA's), (14, 66605), (17, 66479), (19, 66458), (20, 66446), (22, 66374), (27, 66260), (30, 66221), (32, 66203),

Gene: Fringe_101 Start: 67616, Stop: 66885, Start Num: 5

Candidate Starts for Fringe_101:

(Start: 5 @67616 has 253 MA's), (Start: 6 @67577 has 2 MA's), (7, 67550), (Start: 11 @67463 has 3 MA's), (Start: 12 @67424 has 1 MA's), (14, 67382), (17, 67256), (19, 67235), (20, 67223), (22, 67151), (27, 67037), (30, 66998), (32, 66980),

Gene: FugateOSU_97 Start: 67901, Stop: 67170, Start Num: 5

Candidate Starts for FugateOSU_97:

(Start: 5 @67901 has 253 MA's), (Start: 6 @67862 has 2 MA's), (7, 67835), (Start: 11 @67748 has 3 MA's), (Start: 12 @67709 has 1 MA's), (14, 67667), (17, 67541), (19, 67520), (20, 67508), (22, 67436), (27, 67322), (30, 67283), (32, 67265),

Gene: Gareth_97 Start: 67290, Stop: 66559, Start Num: 5

Candidate Starts for Gareth_97:

(Start: 5 @67290 has 253 MA's), (Start: 6 @67251 has 2 MA's), (7, 67224), (Start: 11 @67137 has 3 MA's), (Start: 12 @67098 has 1 MA's), (14, 67056), (17, 66930), (19, 66909), (20, 66897), (22, 66825), (27, 66711), (30, 66672), (32, 66654),

Gene: GeneCoco_96 Start: 67226, Stop: 66495, Start Num: 5

Candidate Starts for GeneCoco_96:

(Start: 5 @67226 has 253 MA's), (Start: 6 @67187 has 2 MA's), (7, 67160), (Start: 11 @67073 has 3 MA's), (Start: 12 @67034 has 1 MA's), (14, 66992), (17, 66866), (19, 66845), (20, 66833), (22, 66761), (27, 66647), (30, 66608), (32, 66590),

Gene: Giraffe_98 Start: 67294, Stop: 66563, Start Num: 5

Candidate Starts for Giraffe_98:

(Start: 5 @67294 has 253 MA's), (Start: 6 @67255 has 2 MA's), (7, 67228), (Start: 11 @67141 has 3 MA's), (Start: 12 @67102 has 1 MA's), (14, 67060), (17, 66934), (19, 66913), (20, 66901), (22, 66829), (27, 66715), (30, 66676), (32, 66658),

Gene: Gophee_96 Start: 67281, Stop: 66550, Start Num: 5

Candidate Starts for Gophee_96:

(Start: 5 @67281 has 253 MA's), (Start: 6 @67242 has 2 MA's), (7, 67215), (Start: 11 @67128 has 3 MA's), (Start: 12 @67089 has 1 MA's), (14, 67047), (17, 66921), (19, 66900), (20, 66888), (22, 66816), (27, 66702), (30, 66663), (32, 66645),

Gene: Grand2040_94 Start: 67016, Stop: 66285, Start Num: 5

Candidate Starts for Grand2040_94:

(Start: 5 @67016 has 253 MA's), (Start: 6 @66977 has 2 MA's), (7, 66950), (Start: 11 @66863 has 3 MA's), (Start: 12 @66824 has 1 MA's), (14, 66782), (17, 66656), (19, 66635), (20, 66623), (22, 66551), (27, 66437), (30, 66398), (32, 66380),

Gene: Gwilliam_97 Start: 67824, Stop: 67093, Start Num: 5

Candidate Starts for Gwilliam_97:

(3, 68043), (4, 67941), (Start: 5 @67824 has 253 MA's), (Start: 6 @67785 has 2 MA's), (7, 67758), (Start: 11 @67671 has 3 MA's), (Start: 12 @67632 has 1 MA's), (14, 67590), (17, 67464), (19, 67443), (20, 67431), (22, 67359), (27, 67245), (30, 67206), (32, 67188),

Gene: HSavage_94 Start: 66365, Stop: 65787, Start Num: 11

Candidate Starts for HSavage_94:

(Start: 11 @66365 has 3 MA's), (Start: 12 @66326 has 1 MA's), (14, 66284), (17, 66158), (19, 66137), (20, 66125), (22, 66053), (27, 65939), (30, 65900), (32, 65882),

Gene: Haimas_94 Start: 66721, Stop: 65990, Start Num: 5

Candidate Starts for Haimas_94:

(Start: 5 @66721 has 253 MA's), (Start: 6 @66682 has 2 MA's), (7, 66655), (Start: 11 @66568 has 3 MA's), (Start: 12 @66529 has 1 MA's), (14, 66487), (17, 66361), (19, 66340), (20, 66328), (22, 66256), (27, 66142), (30, 66103), (32, 66085),

Gene: Haleema_96 Start: 66840, Stop: 66109, Start Num: 5

Candidate Starts for Haleema_96:

(Start: 5 @66840 has 253 MA's), (Start: 6 @66801 has 2 MA's), (7, 66774), (Start: 11 @66687 has 3 MA's), (Start: 12 @66648 has 1 MA's), (14, 66606), (17, 66480), (19, 66459), (20, 66447), (22, 66375), (27, 66261), (30, 66222), (32, 66204),

Gene: Hamish_94 Start: 67009, Stop: 66278, Start Num: 5

Candidate Starts for Hamish_94:

(Start: 5 @67009 has 253 MA's), (Start: 6 @66970 has 2 MA's), (7, 66943), (Start: 11 @66856 has 3 MA's), (Start: 12 @66817 has 1 MA's), (14, 66775), (17, 66649), (19, 66628), (20, 66616), (22, 66544), (27, 66430), (30, 66391), (32, 66373),

Gene: Hartsy_95 Start: 66958, Stop: 66227, Start Num: 5

Candidate Starts for Hartsy_95:

(Start: 5 @66958 has 253 MA's), (Start: 6 @66919 has 2 MA's), (7, 66892), (Start: 11 @66805 has 3 MA's), (Start: 12 @66766 has 1 MA's), (14, 66724), (16, 66637), (17, 66598), (19, 66577), (20, 66565), (22, 66493), (27, 66379), (30, 66340), (32, 66322),

Gene: Harvey_94 Start: 66617, Stop: 65886, Start Num: 5

Candidate Starts for Harvey_94:

(Start: 5 @66617 has 253 MA's), (Start: 6 @66578 has 2 MA's), (7, 66551), (Start: 11 @66464 has 3 MA's), (Start: 12 @66425 has 1 MA's), (17, 66257), (19, 66236), (20, 66224), (22, 66152), (27, 66038), (30, 65999), (32, 65981),

Gene: Held_95 Start: 66738, Stop: 66007, Start Num: 5

Candidate Starts for Held_95:

(Start: 5 @66738 has 253 MA's), (Start: 6 @66699 has 2 MA's), (7, 66672), (Start: 11 @66585 has 3 MA's), (Start: 12 @66546 has 1 MA's), (14, 66504), (17, 66378), (19, 66357), (20, 66345), (22, 66273), (27, 66159), (30, 66120), (32, 66102),

Gene: HenryJackson_97 Start: 67458, Stop: 66727, Start Num: 5

Candidate Starts for HenryJackson_97:

(Start: 5 @67458 has 253 MA's), (Start: 6 @67419 has 2 MA's), (7, 67392), (Start: 11 @67305 has 3 MA's), (Start: 12 @67266 has 1 MA's), (14, 67224), (17, 67098), (19, 67077), (20, 67065), (22, 66993), (27, 66879), (30, 66840), (32, 66822),

Gene: Hertubise_96 Start: 67100, Stop: 66369, Start Num: 5

Candidate Starts for Hertubise_96:

(Start: 5 @67100 has 253 MA's), (Start: 6 @67061 has 2 MA's), (7, 67034), (Start: 11 @66947 has 3 MA's), (Start: 12 @66908 has 1 MA's), (14, 66866), (17, 66740), (19, 66719), (20, 66707), (22, 66635), (27, 66521), (30, 66482), (32, 66464),

Gene: Hetaeria_96 Start: 66830, Stop: 66099, Start Num: 5

Candidate Starts for Hetaeria_96:

(Start: 5 @66830 has 253 MA's), (Start: 6 @66791 has 2 MA's), (7, 66764), (Start: 11 @66677 has 3 MA's), (Start: 12 @66638 has 1 MA's), (14, 66596), (17, 66470), (19, 66449), (20, 66437), (22, 66365), (27, 66251), (30, 66212), (32, 66194),

Gene: HighStump_99 Start: 67245, Stop: 66514, Start Num: 5

Candidate Starts for HighStump_99:

(Start: 5 @67245 has 253 MA's), (Start: 6 @67206 has 2 MA's), (7, 67179), (Start: 11 @67092 has 3 MA's), (Start: 12 @67053 has 1 MA's), (14, 67011), (17, 66885), (19, 66864), (20, 66852), (22, 66780), (27, 66666), (30, 66627), (32, 66609),

Gene: Hocus_96 Start: 66759, Stop: 66028, Start Num: 5

Candidate Starts for Hocus_96:

(Start: 5 @66759 has 253 MA's), (Start: 6 @66720 has 2 MA's), (7, 66693), (Start: 11 @66606 has 3 MA's), (Start: 12 @66567 has 1 MA's), (14, 66525), (17, 66399), (19, 66378), (20, 66366), (22, 66294), (27, 66180), (30, 66141), (32, 66123),

Gene: Horchata_91 Start: 66558, Stop: 65962, Start Num: 6

Candidate Starts for Horchata_91:

(3, 66816), (4, 66714), (Start: 6 @66558 has 2 MA's), (Start: 12 @66501 has 1 MA's), (14, 66459), (17, 66333), (19, 66312), (20, 66300), (27, 66114), (30, 66075), (32, 66057),

Gene: ImtiyazSitla_98 Start: 67284, Stop: 66532, Start Num: 5

Candidate Starts for ImtiyazSitla_98:

(3, 67503), (4, 67401), (Start: 5 @67284 has 253 MA's), (Start: 6 @67245 has 2 MA's), (Start: 11 @67131 has 3 MA's), (Start: 12 @67092 has 1 MA's), (17, 66924), (19, 66903), (20, 66891), (22, 66819), (27, 66705), (30, 66666), (32, 66648),

Gene: Inchworm_98 Start: 67132, Stop: 66401, Start Num: 5

Candidate Starts for Inchworm_98:

(Start: 5 @67132 has 253 MA's), (Start: 6 @67093 has 2 MA's), (7, 67066), (Start: 11 @66979 has 3 MA's), (Start: 12 @66940 has 1 MA's), (14, 66898), (17, 66772), (19, 66751), (20, 66739), (22, 66667), (27, 66553), (30, 66514), (32, 66496),

Gene: Indlovu_88 Start: 67222, Stop: 66713, Start Num: 13

Candidate Starts for Indlovu_88:

(Start: 13 @67222 has 1 MA's), (17, 67096), (18, 67087), (19, 67075), (25, 66898), (26, 66895), (28, 66874), (30, 66838), (33, 66802), (34, 66775), (35, 66736),

Gene: Inverness_94 Start: 66689, Stop: 65958, Start Num: 5

Candidate Starts for Inverness_94:

(Start: 5 @66689 has 253 MA's), (Start: 6 @66650 has 2 MA's), (7, 66623), (Start: 11 @66536 has 3 MA's), (Start: 12 @66497 has 1 MA's), (14, 66455), (17, 66329), (19, 66308), (20, 66296), (22, 66224), (27, 66110), (30, 66071), (32, 66053),

Gene: Iridoclysis_96 Start: 67022, Stop: 66291, Start Num: 5

Candidate Starts for Iridoclysis_96:

(Start: 5 @67022 has 253 MA's), (Start: 6 @66983 has 2 MA's), (7, 66956), (Start: 11 @66869 has 3 MA's), (Start: 12 @66830 has 1 MA's), (14, 66788), (17, 66662), (19, 66641), (20, 66629), (22, 66557), (27, 66443), (30, 66404), (32, 66386),

Gene: IsaacEli_99 Start: 67263, Stop: 66532, Start Num: 5

Candidate Starts for IsaacEli_99:

(3, 67482), (4, 67380), (Start: 5 @67263 has 253 MA's), (Start: 6 @67224 has 2 MA's), (7, 67197), (Start: 11 @67110 has 3 MA's), (Start: 12 @67071 has 1 MA's), (14, 67029), (17, 66903), (19, 66882), (20, 66870), (22, 66798), (27, 66684), (30, 66645), (32, 66627),

Gene: JDog_96 Start: 67292, Stop: 66561, Start Num: 5

Candidate Starts for JDog_96:

(Start: 5 @67292 has 253 MA's), (Start: 6 @67253 has 2 MA's), (7, 67226), (Start: 11 @67139 has 3 MA's), (Start: 12 @67100 has 1 MA's), (14, 67058), (17, 66932), (19, 66911), (20, 66899), (22, 66827), (27, 66713), (30, 66674), (32, 66656),

Gene: JacAttac_97 Start: 66736, Stop: 66005, Start Num: 5

Candidate Starts for JacAttac_97:

(Start: 5 @66736 has 253 MA's), (Start: 6 @66697 has 2 MA's), (7, 66670), (Start: 11 @66583 has 3 MA's), (Start: 12 @66544 has 1 MA's), (14, 66502), (17, 66376), (19, 66355), (20, 66343), (22, 66271), (27, 66157), (30, 66118), (32, 66100),

Gene: JakeO_98 Start: 67020, Stop: 66289, Start Num: 5

Candidate Starts for JakeO_98:

(Start: 5 @67020 has 253 MA's), (Start: 6 @66981 has 2 MA's), (7, 66954), (Start: 11 @66867 has 3 MA's), (Start: 12 @66828 has 1 MA's), (14, 66786), (17, 66660), (19, 66639), (20, 66627), (22, 66555), (27, 66441), (30, 66402), (32, 66384),

Gene: JangoPhett_95 Start: 67098, Stop: 66367, Start Num: 5

Candidate Starts for JangoPhett_95:

(Start: 5 @67098 has 253 MA's), (Start: 6 @67059 has 2 MA's), (7, 67032), (Start: 11 @66945 has 3 MA's), (Start: 12 @66906 has 1 MA's), (14, 66864), (17, 66738), (19, 66717), (20, 66705), (22, 66633), (27, 66519), (30, 66480), (32, 66462),

Gene: Jillium_97 Start: 67175, Stop: 66444, Start Num: 5

Candidate Starts for Jillium_97:

(Start: 5 @67175 has 253 MA's), (Start: 6 @67136 has 2 MA's), (7, 67109), (Start: 11 @67022 has 3 MA's), (Start: 12 @66983 has 1 MA's), (14, 66941), (17, 66815), (19, 66794), (20, 66782), (22, 66710), (27, 66596), (30, 66557), (32, 66539),

Gene: Jiminy_97 Start: 66956, Stop: 66225, Start Num: 5

Candidate Starts for Jiminy_97:

(Start: 5 @66956 has 253 MA's), (Start: 6 @66917 has 2 MA's), (7, 66890), (Start: 11 @66803 has 3 MA's), (Start: 12 @66764 has 1 MA's), (14, 66722), (17, 66596), (19, 66575), (20, 66563), (22, 66491), (27, 66377), (30, 66338), (32, 66320),

Gene: Jiraiya_102 Start: 67040, Stop: 66309, Start Num: 5

Candidate Starts for Jiraiya_102:

(Start: 5 @67040 has 253 MA's), (Start: 6 @67001 has 2 MA's), (7, 66974), (Start: 11 @66887 has 3 MA's), (Start: 12 @66848 has 1 MA's), (14, 66806), (17, 66680), (19, 66659), (20, 66647), (22, 66575), (27, 66461), (30, 66422), (32, 66404),

Gene: KLucky39_94 Start: 66560, Stop: 65829, Start Num: 5

Candidate Starts for KLucky39_94:

(Start: 5 @66560 has 253 MA's), (Start: 6 @66521 has 2 MA's), (7, 66494), (Start: 11 @66407 has 3 MA's), (Start: 12 @66368 has 1 MA's), (14, 66326), (17, 66200), (19, 66179), (20, 66167), (22, 66095), (27, 65981), (30, 65942), (32, 65924),

Gene: Kahve_97 Start: 67456, Stop: 66725, Start Num: 5

Candidate Starts for Kahve_97:

(Start: 5 @67456 has 253 MA's), (Start: 6 @67417 has 2 MA's), (7, 67390), (Start: 11 @67303 has 3 MA's), (Start: 12 @67264 has 1 MA's), (14, 67222), (17, 67096), (19, 67075), (20, 67063), (22, 66991), (27, 66877), (30, 66838), (32, 66820),

Gene: Kailash_95 Start: 67155, Stop: 66424, Start Num: 5

Candidate Starts for Kailash_95:

(3, 67374), (4, 67272), (Start: 5 @67155 has 253 MA's), (Start: 6 @67116 has 2 MA's), (Start: 11 @67002 has 3 MA's), (Start: 12 @66963 has 1 MA's), (17, 66795), (19, 66774), (20, 66762), (22, 66690), (27, 66576), (30, 66537), (32, 66519),

Gene: Katniss_99 Start: 66872, Stop: 66141, Start Num: 5

Candidate Starts for Katniss_99:

(Start: 5 @66872 has 253 MA's), (Start: 6 @66833 has 2 MA's), (7, 66806), (Start: 11 @66719 has 3 MA's), (Start: 12 @66680 has 1 MA's), (14, 66638), (17, 66512), (19, 66491), (20, 66479), (22, 66407), (27, 66293), (30, 66254), (32, 66236),

Gene: Keitherie_100 Start: 67514, Stop: 66783, Start Num: 5

Candidate Starts for Keitherie_100:

(Start: 5 @67514 has 253 MA's), (Start: 6 @67475 has 2 MA's), (7, 67448), (Start: 11 @67361 has 3 MA's), (Start: 12 @67322 has 1 MA's), (14, 67280), (17, 67154), (19, 67133), (20, 67121), (22, 67049), (27, 66935), (30, 66896), (32, 66878),

Gene: Kikipoo_99 Start: 67263, Stop: 66532, Start Num: 5

Candidate Starts for Kikipoo_99:

(3, 67482), (4, 67380), (Start: 5 @67263 has 253 MA's), (Start: 6 @67224 has 2 MA's), (7, 67197), (Start: 11 @67110 has 3 MA's), (Start: 12 @67071 has 1 MA's), (14, 67029), (17, 66903), (19, 66882), (20, 66870), (22, 66798), (27, 66684), (30, 66645), (32, 66627),

Gene: Kimbrough_98 Start: 67335, Stop: 66604, Start Num: 5

Candidate Starts for Kimbrough_98:

(Start: 5 @67335 has 253 MA's), (Start: 6 @67296 has 2 MA's), (7, 67269), (Start: 11 @67182 has 3 MA's), (Start: 12 @67143 has 1 MA's), (14, 67101), (17, 66975), (19, 66954), (20, 66942), (22, 66870), (27, 66756), (30, 66717), (32, 66699),

Gene: KingTut_87 Start: 63252, Stop: 62521, Start Num: 5

Candidate Starts for KingTut_87:

(Start: 5 @63252 has 253 MA's), (Start: 6 @63213 has 2 MA's), (7, 63186), (Start: 11 @63099 has 3 MA's), (Start: 12 @63060 has 1 MA's), (14, 63018), (17, 62892), (19, 62871), (20, 62859), (22, 62787), (27, 62673), (30, 62634), (32, 62616),

Gene: KingVeVeVe_95 Start: 66468, Stop: 65737, Start Num: 5

Candidate Starts for KingVeVeVe_95:

(3, 66687), (4, 66585), (Start: 5 @66468 has 253 MA's), (Start: 6 @66429 has 2 MA's), (7, 66402), (Start: 12 @66276 has 1 MA's), (14, 66234), (17, 66108), (19, 66087), (20, 66075), (27, 65889), (30, 65850), (32, 65832),

Gene: KlimbOn_96 Start: 66775, Stop: 66044, Start Num: 5

Candidate Starts for KlimbOn_96:

(Start: 5 @66775 has 253 MA's), (Start: 6 @66736 has 2 MA's), (7, 66709), (Start: 11 @66622 has 3 MA's), (Start: 12 @66583 has 1 MA's), (14, 66541), (17, 66415), (19, 66394), (20, 66382), (22, 66310), (27, 66196), (30, 66157), (32, 66139),

Gene: Kloppinator_97 Start: 66905, Stop: 66174, Start Num: 5

Candidate Starts for Kloppinator_97:

(Start: 5 @66905 has 253 MA's), (Start: 6 @66866 has 2 MA's), (7, 66839), (Start: 11 @66752 has 3 MA's), (Start: 12 @66713 has 1 MA's), (17, 66545), (19, 66524), (20, 66512), (22, 66440), (27, 66326), (30, 66287), (32, 66269),

Gene: Kwadwo_96 Start: 66759, Stop: 66028, Start Num: 5

Candidate Starts for Kwadwo_96:

(Start: 5 @66759 has 253 MA's), (Start: 6 @66720 has 2 MA's), (7, 66693), (Start: 11 @66606 has 3 MA's), (Start: 12 @66567 has 1 MA's), (14, 66525), (17, 66399), (19, 66378), (20, 66366), (22, 66294), (27, 66180), (30, 66141), (32, 66123),

Gene: Kwksand96_98 Start: 67025, Stop: 66294, Start Num: 5

Candidate Starts for Kwksand96_98:

(Start: 5 @67025 has 253 MA's), (Start: 6 @66986 has 2 MA's), (7, 66959), (Start: 12 @66833 has 1 MA's), (14, 66791), (17, 66665), (19, 66644), (20, 66632), (22, 66560), (27, 66446), (30, 66407), (32, 66389),

Gene: Labeouficaum_97 Start: 66839, Stop: 66108, Start Num: 5

Candidate Starts for Labeouficaum_97:

(3, 67058), (4, 66956), (Start: 5 @66839 has 253 MA's), (Start: 6 @66800 has 2 MA's), (Start: 11 @66686 has 3 MA's), (Start: 12 @66647 has 1 MA's), (17, 66479), (19, 66458), (20, 66446), (22, 66374), (27, 66260), (30, 66221), (32, 66203),

Gene: LasagnaCat_98 Start: 67141, Stop: 66410, Start Num: 5

Candidate Starts for LasagnaCat_98:

(Start: 5 @67141 has 253 MA's), (Start: 6 @67102 has 2 MA's), (7, 67075), (Start: 11 @66988 has 3 MA's), (Start: 12 @66949 has 1 MA's), (14, 66907), (17, 66781), (19, 66760), (20, 66748), (22, 66676), (27, 66562), (30, 66523), (32, 66505),

Gene: Lasso_96 Start: 67001, Stop: 66270, Start Num: 5

Candidate Starts for Lasso_96:

(Start: 5 @67001 has 253 MA's), (Start: 6 @66962 has 2 MA's), (7, 66935), (Start: 11 @66848 has 3 MA's), (Start: 12 @66809 has 1 MA's), (14, 66767), (17, 66641), (19, 66620), (20, 66608), (22, 66536), (27, 66422), (30, 66383), (32, 66365),

Gene: LeeLot_95 Start: 67346, Stop: 66615, Start Num: 5

Candidate Starts for LeeLot_95:

(Start: 5 @67346 has 253 MA's), (Start: 6 @67307 has 2 MA's), (7, 67280), (Start: 11 @67193 has 3 MA's), (Start: 12 @67154 has 1 MA's), (14, 67112), (17, 66986), (19, 66965), (20, 66953), (22, 66881), (27, 66767), (30, 66728), (32, 66710),

Gene: Lego3393_95 Start: 67462, Stop: 66731, Start Num: 5

Candidate Starts for Lego3393_95:

(Start: 5 @67462 has 253 MA's), (Start: 6 @67423 has 2 MA's), (7, 67396), (Start: 11 @67309 has 3 MA's), (Start: 12 @67270 has 1 MA's), (14, 67228), (17, 67102), (19, 67081), (20, 67069), (22, 66997),

(27, 66883), (30, 66844), (32, 66826),

Gene: Legolas_98 Start: 67089, Stop: 66358, Start Num: 5

Candidate Starts for Legolas_98:

(Start: 5 @67089 has 253 MA's), (Start: 6 @67050 has 2 MA's), (7, 67023), (Start: 11 @66936 has 3 MA's), (Start: 12 @66897 has 1 MA's), (14, 66855), (17, 66729), (19, 66708), (20, 66696), (22, 66624), (27, 66510), (30, 66471), (32, 66453),

Gene: LeiMonet_99 Start: 67222, Stop: 66491, Start Num: 5

Candidate Starts for LeiMonet_99:

(Start: 5 @67222 has 253 MA's), (Start: 6 @67183 has 2 MA's), (7, 67156), (Start: 11 @67069 has 3 MA's), (Start: 12 @67030 has 1 MA's), (14, 66988), (17, 66862), (19, 66841), (20, 66829), (22, 66757), (27, 66643), (30, 66604), (32, 66586),

Gene: LemonSlice_97 Start: 66748, Stop: 66017, Start Num: 5

Candidate Starts for LemonSlice_97:

(Start: 5 @66748 has 253 MA's), (Start: 6 @66709 has 2 MA's), (7, 66682), (Start: 11 @66595 has 3 MA's), (Start: 12 @66556 has 1 MA's), (14, 66514), (17, 66388), (19, 66367), (20, 66355), (22, 66283), (27, 66169), (30, 66130), (32, 66112),

Gene: Longacauda_97 Start: 66983, Stop: 66231, Start Num: 5

Candidate Starts for Longacauda_97:

(Start: 5 @66983 has 253 MA's), (Start: 6 @66944 has 2 MA's), (7, 66917), (Start: 11 @66830 has 3 MA's), (Start: 12 @66791 has 1 MA's), (14, 66749), (17, 66623), (19, 66602), (20, 66590), (22, 66518), (27, 66404), (30, 66365), (32, 66347),

Gene: Lopsy_93 Start: 66654, Stop: 65923, Start Num: 5

Candidate Starts for Lopsy_93:

(Start: 5 @66654 has 253 MA's), (Start: 6 @66615 has 2 MA's), (7, 66588), (Start: 11 @66501 has 3 MA's), (Start: 12 @66462 has 1 MA's), (14, 66420), (17, 66294), (19, 66273), (20, 66261), (27, 66075), (30, 66036), (32, 66018),

Gene: LostAndPhound_96 Start: 67290, Stop: 66559, Start Num: 5

Candidate Starts for LostAndPhound_96:

(Start: 5 @67290 has 253 MA's), (Start: 6 @67251 has 2 MA's), (7, 67224), (Start: 11 @67137 has 3 MA's), (Start: 12 @67098 has 1 MA's), (14, 67056), (17, 66930), (19, 66909), (20, 66897), (22, 66825), (27, 66711), (30, 66672), (32, 66654),

Gene: LuckyMarjie_94 Start: 66500, Stop: 65769, Start Num: 5

Candidate Starts for LuckyMarjie_94:

(Start: 5 @66500 has 253 MA's), (Start: 6 @66461 has 2 MA's), (7, 66434), (Start: 11 @66347 has 3 MA's), (Start: 12 @66308 has 1 MA's), (14, 66266), (17, 66140), (19, 66119), (20, 66107), (22, 66035), (27, 65921), (30, 65882), (32, 65864),

Gene: Lulumae_92 Start: 66481, Stop: 65750, Start Num: 5

Candidate Starts for Lulumae_92:

(Start: 5 @66481 has 253 MA's), (Start: 6 @66442 has 2 MA's), (7, 66415), (Start: 12 @66289 has 1 MA's), (14, 66247), (17, 66121), (19, 66100), (20, 66088), (22, 66016), (27, 65902), (30, 65863), (32, 65845),

Gene: Lulwa_94 Start: 66114, Stop: 65383, Start Num: 5

Candidate Starts for Lulwa_94:

(Start: 5 @66114 has 253 MA's), (Start: 6 @66075 has 2 MA's), (7, 66048), (Start: 11 @65961 has 3 MA's), (Start: 12 @65922 has 1 MA's), (14, 65880), (17, 65754), (19, 65733), (20, 65721), (22, 65649), (27, 65535), (30, 65496), (32, 65478),

Gene: Lumine_98 Start: 66938, Stop: 66207, Start Num: 5

Candidate Starts for Lumine_98:

(Start: 5 @66938 has 253 MA's), (Start: 6 @66899 has 2 MA's), (7, 66872), (Start: 11 @66785 has 3 MA's), (Start: 12 @66746 has 1 MA's), (14, 66704), (17, 66578), (19, 66557), (20, 66545), (22, 66473), (27, 66359), (30, 66320), (32, 66302),

Gene: MRabcd_97 Start: 67216, Stop: 66485, Start Num: 5

Candidate Starts for MRabcd_97:

(Start: 5 @67216 has 253 MA's), (Start: 6 @67177 has 2 MA's), (7, 67150), (Start: 11 @67063 has 3 MA's), (Start: 12 @67024 has 1 MA's), (14, 66982), (17, 66856), (19, 66835), (20, 66823), (22, 66751), (27, 66637), (30, 66598), (32, 66580),

Gene: Mag7_95 Start: 66699, Stop: 65968, Start Num: 5

Candidate Starts for Mag7_95:

(3, 66918), (4, 66816), (Start: 5 @66699 has 253 MA's), (Start: 6 @66660 has 2 MA's), (Start: 11 @66546 has 3 MA's), (Start: 12 @66507 has 1 MA's), (17, 66339), (19, 66318), (20, 66306), (22, 66234), (27, 66120), (30, 66081), (32, 66063),

Gene: Magic8_96 Start: 67067, Stop: 66336, Start Num: 5

Candidate Starts for Magic8_96:

(3, 67286), (4, 67184), (Start: 5 @67067 has 253 MA's), (Start: 6 @67028 has 2 MA's), (Start: 11 @66914 has 3 MA's), (Start: 12 @66875 has 1 MA's), (17, 66707), (19, 66686), (20, 66674), (22, 66602), (27, 66488), (30, 66449), (32, 66431),

Gene: Mana_94 Start: 66904, Stop: 66173, Start Num: 5

Candidate Starts for Mana_94:

(Start: 5 @66904 has 253 MA's), (Start: 6 @66865 has 2 MA's), (7, 66838), (Start: 11 @66751 has 3 MA's), (Start: 12 @66712 has 1 MA's), (14, 66670), (17, 66544), (19, 66523), (20, 66511), (22, 66439), (27, 66325), (30, 66286), (32, 66268),

Gene: Manad_96 Start: 67013, Stop: 66282, Start Num: 5

Candidate Starts for Manad_96:

(Start: 5 @67013 has 253 MA's), (Start: 6 @66974 has 2 MA's), (7, 66947), (Start: 11 @66860 has 3 MA's), (Start: 12 @66821 has 1 MA's), (14, 66779), (17, 66653), (19, 66632), (20, 66620), (22, 66548), (27, 66434), (30, 66395), (32, 66377),

Gene: Maru_96 Start: 67109, Stop: 66378, Start Num: 5

Candidate Starts for Maru_96:

(Start: 5 @67109 has 253 MA's), (Start: 6 @67070 has 2 MA's), (7, 67043), (Start: 11 @66956 has 3 MA's), (Start: 12 @66917 has 1 MA's), (14, 66875), (17, 66749), (19, 66728), (20, 66716), (22, 66644), (27, 66530), (30, 66491), (32, 66473),

Gene: Maskar_98 Start: 67284, Stop: 66532, Start Num: 5

Candidate Starts for Maskar_98:

(3, 67503), (4, 67401), (Start: 5 @67284 has 253 MA's), (Start: 6 @67245 has 2 MA's), (Start: 11 @67131 has 3 MA's), (Start: 12 @67092 has 1 MA's), (17, 66924), (19, 66903), (20, 66891), (22, 66819), (27, 66705), (30, 66666), (32, 66648),

Gene: Matalotodo_95 Start: 67748, Stop: 67017, Start Num: 5

Candidate Starts for Matalotodo_95:

(Start: 5 @67748 has 253 MA's), (Start: 6 @67709 has 2 MA's), (7, 67682), (Start: 11 @67595 has 3 MA's), (Start: 12 @67556 has 1 MA's), (14, 67514), (17, 67388), (19, 67367), (20, 67355), (22, 67283), (27, 67169), (30, 67130), (32, 67112),

Gene: Mcshane_99 Start: 67131, Stop: 66400, Start Num: 5

Candidate Starts for Mcshane_99:

(Start: 5 @67131 has 253 MA's), (Start: 6 @67092 has 2 MA's), (7, 67065), (Start: 11 @66978 has 3 MA's), (Start: 12 @66939 has 1 MA's), (14, 66897), (17, 66771), (19, 66750), (20, 66738), (22, 66666), (27, 66552), (30, 66513), (32, 66495),

Gene: Mecca_97 Start: 67315, Stop: 66584, Start Num: 5

Candidate Starts for Mecca_97:

(Start: 5 @67315 has 253 MA's), (Start: 6 @67276 has 2 MA's), (7, 67249), (Start: 11 @67162 has 3 MA's), (Start: 12 @67123 has 1 MA's), (14, 67081), (17, 66955), (19, 66934), (20, 66922), (22, 66850), (27, 66736), (30, 66697), (32, 66679),

Gene: Megamind20_99 Start: 67095, Stop: 66364, Start Num: 5

Candidate Starts for Megamind20_99:

(Start: 5 @67095 has 253 MA's), (Start: 6 @67056 has 2 MA's), (7, 67029), (Start: 12 @66903 has 1 MA's), (14, 66861), (17, 66735), (19, 66714), (20, 66702), (22, 66630), (27, 66516), (30, 66477), (32, 66459),

Gene: Megatron_98 Start: 67434, Stop: 66703, Start Num: 5

Candidate Starts for Megatron_98:

(Start: 5 @67434 has 253 MA's), (Start: 6 @67395 has 2 MA's), (7, 67368), (Start: 11 @67281 has 3 MA's), (Start: 12 @67242 has 1 MA's), (14, 67200), (17, 67074), (19, 67053), (20, 67041), (22, 66969), (27, 66855), (30, 66816), (32, 66798),

Gene: Melc17_94 Start: 67384, Stop: 66653, Start Num: 5

Candidate Starts for Melc17_94:

(Start: 5 @67384 has 253 MA's), (Start: 6 @67345 has 2 MA's), (7, 67318), (Start: 11 @67231 has 3 MA's), (Start: 12 @67192 has 1 MA's), (14, 67150), (17, 67024), (19, 67003), (20, 66991), (22, 66919), (27, 66805), (30, 66766), (32, 66748),

Gene: MelsMeow_95 Start: 66765, Stop: 66013, Start Num: 5

Candidate Starts for MelsMeow_95:

(3, 66984), (4, 66882), (Start: 5 @66765 has 253 MA's), (Start: 6 @66726 has 2 MA's), (Start: 11 @66612 has 3 MA's), (Start: 12 @66573 has 1 MA's), (17, 66405), (19, 66384), (20, 66372), (22, 66300), (27, 66186), (30, 66147), (32, 66129),

Gene: Mesh1_97 Start: 67199, Stop: 66468, Start Num: 5

Candidate Starts for Mesh1_97:

(Start: 5 @67199 has 253 MA's), (Start: 6 @67160 has 2 MA's), (7, 67133), (Start: 11 @67046 has 3 MA's), (Start: 12 @67007 has 1 MA's), (14, 66965), (17, 66839), (19, 66818), (20, 66806), (22, 66734), (27, 66620), (30, 66581), (32, 66563),

Gene: MichaelPhcott_95 Start: 66696, Stop: 65965, Start Num: 5

Candidate Starts for MichaelPhcott_95:

(3, 66915), (4, 66813), (Start: 5 @66696 has 253 MA's), (Start: 6 @66657 has 2 MA's), (Start: 11 @66543 has 3 MA's), (Start: 12 @66504 has 1 MA's), (17, 66336), (19, 66315), (20, 66303), (22, 66231), (27, 66117), (30, 66078), (32, 66060),

Gene: Mikota_91 Start: 66191, Stop: 65460, Start Num: 5

Candidate Starts for Mikota_91:

(Start: 5 @66191 has 253 MA's), (Start: 6 @66152 has 2 MA's), (7, 66125), (Start: 11 @66038 has 3 MA's), (Start: 12 @65999 has 1 MA's), (17, 65831), (19, 65810), (20, 65798), (22, 65726), (27, 65612), (30, 65573), (32, 65555),

Gene: MiniBoss_92 Start: 65812, Stop: 65081, Start Num: 5

Candidate Starts for MiniBoss_92:

(3, 66031), (4, 65929), (Start: 5 @65812 has 253 MA's), (Start: 6 @65773 has 2 MA's), (7, 65746), (9, 65710), (Start: 11 @65659 has 3 MA's), (Start: 12 @65620 has 1 MA's), (14, 65578), (17, 65452), (19, 65431), (20, 65419), (27, 65233), (30, 65194), (32, 65176),

Gene: MitKao_97 Start: 66917, Stop: 66186, Start Num: 5

Candidate Starts for MitKao_97:

(Start: 5 @66917 has 253 MA's), (Start: 6 @66878 has 2 MA's), (7, 66851), (Start: 11 @66764 has 3 MA's), (Start: 12 @66725 has 1 MA's), (14, 66683), (17, 66557), (19, 66536), (20, 66524), (22, 66452), (27, 66338), (30, 66299), (32, 66281),

Gene: Morgushi_94 Start: 66732, Stop: 66001, Start Num: 5

Candidate Starts for Morgushi_94:

(Start: 5 @66732 has 253 MA's), (Start: 6 @66693 has 2 MA's), (7, 66666), (Start: 11 @66579 has 3 MA's), (Start: 12 @66540 has 1 MA's), (14, 66498), (17, 66372), (19, 66351), (20, 66339), (22, 66267), (27, 66153), (30, 66114), (32, 66096),

Gene: Morty_97 Start: 67302, Stop: 66571, Start Num: 5

Candidate Starts for Morty_97:

(Start: 5 @67302 has 253 MA's), (Start: 6 @67263 has 2 MA's), (7, 67236), (Start: 11 @67149 has 3 MA's), (Start: 12 @67110 has 1 MA's), (14, 67068), (17, 66942), (19, 66921), (20, 66909), (22, 66837), (27, 66723), (30, 66684), (32, 66666),

Gene: Mosaic_94 Start: 66913, Stop: 66182, Start Num: 5

Candidate Starts for Mosaic_94:

(Start: 5 @66913 has 253 MA's), (Start: 6 @66874 has 2 MA's), (7, 66847), (Start: 11 @66760 has 3 MA's), (Start: 12 @66721 has 1 MA's), (14, 66679), (17, 66553), (19, 66532), (20, 66520), (22, 66448), (27, 66334), (30, 66295), (32, 66277),

Gene: MrPhizzler_96 Start: 67212, Stop: 66481, Start Num: 5

Candidate Starts for MrPhizzler_96:

(Start: 5 @67212 has 253 MA's), (Start: 6 @67173 has 2 MA's), (7, 67146), (Start: 12 @67020 has 1 MA's), (14, 66978), (17, 66852), (19, 66831), (20, 66819), (22, 66747), (27, 66633), (30, 66594), (32, 66576),

Gene: Mulan_96 Start: 66946, Stop: 66215, Start Num: 5

Candidate Starts for Mulan_96:

(Start: 5 @66946 has 253 MA's), (Start: 6 @66907 has 2 MA's), (7, 66880), (Start: 11 @66793 has 3 MA's), (Start: 12 @66754 has 1 MA's), (14, 66712), (17, 66586), (19, 66565), (20, 66553), (22, 66481), (27, 66367), (30, 66328), (32, 66310),

Gene: Murdoc_93 Start: 67025, Stop: 66294, Start Num: 5

Candidate Starts for Murdoc_93:

(Start: 5 @67025 has 253 MA's), (Start: 6 @66986 has 2 MA's), (7, 66959), (Start: 11 @66872 has 3 MA's), (Start: 12 @66833 has 1 MA's), (14, 66791), (17, 66665), (19, 66644), (20, 66632), (22, 66560), (27, 66446), (30, 66407), (32, 66389),

Gene: Mutante_98 Start: 66919, Stop: 66188, Start Num: 5

Candidate Starts for Mutante_98:

(Start: 5 @66919 has 253 MA's), (Start: 6 @66880 has 2 MA's), (7, 66853), (Start: 11 @66766 has 3 MA's), (Start: 12 @66727 has 1 MA's), (14, 66685), (17, 66559), (19, 66538), (20, 66526), (22, 66454), (27, 66340), (30, 66301), (32, 66283),

Gene: Nacho_0099 Start: 67746, Stop: 67015, Start Num: 5

Candidate Starts for Nacho_0099:

(Start: 5 @67746 has 253 MA's), (Start: 6 @67707 has 2 MA's), (7, 67680), (Start: 11 @67593 has 3 MA's), (Start: 12 @67554 has 1 MA's), (14, 67512), (17, 67386), (19, 67365), (20, 67353), (22, 67281), (27, 67167), (30, 67128), (32, 67110),

Gene: Nangang_90 Start: 66354, Stop: 65737, Start Num: 12

Candidate Starts for Nangang_90:

(2, 66789), (8, 66459), (Start: 12 @66354 has 1 MA's), (17, 66186), (18, 66177), (24, 66069), (29, 65952), (30, 65928), (32, 65910), (36, 65817),

Gene: Newman_92 Start: 67023, Stop: 66292, Start Num: 5

Candidate Starts for Newman_92:

(Start: 5 @67023 has 253 MA's), (Start: 6 @66984 has 2 MA's), (7, 66957), (Start: 11 @66870 has 3 MA's), (Start: 12 @66831 has 1 MA's), (14, 66789), (17, 66663), (19, 66642), (20, 66630), (22, 66558), (27, 66444), (30, 66405), (32, 66387),

Gene: Nicole21_98 Start: 67053, Stop: 66322, Start Num: 5

Candidate Starts for Nicole21_98:

(Start: 5 @67053 has 253 MA's), (Start: 6 @67014 has 2 MA's), (7, 66987), (Start: 11 @66900 has 3 MA's), (Start: 12 @66861 has 1 MA's), (14, 66819), (17, 66693), (19, 66672), (20, 66660), (22, 66588), (27, 66474), (30, 66435), (32, 66417),

Gene: Numberten_97 Start: 67032, Stop: 66301, Start Num: 5

Candidate Starts for Numberten_97:

(Start: 5 @67032 has 253 MA's), (Start: 6 @66993 has 2 MA's), (7, 66966), (Start: 11 @66879 has 3 MA's), (Start: 12 @66840 has 1 MA's), (14, 66798), (17, 66672), (19, 66651), (20, 66639), (22, 66567), (27, 66453), (30, 66414), (32, 66396),

Gene: Nyala_97 Start: 66768, Stop: 66037, Start Num: 5

Candidate Starts for Nyala_97:

(Start: 5 @66768 has 253 MA's), (Start: 6 @66729 has 2 MA's), (7, 66702), (Start: 11 @66615 has 3 MA's), (Start: 12 @66576 has 1 MA's), (14, 66534), (17, 66408), (19, 66387), (20, 66375), (22, 66303), (27, 66189), (30, 66150), (32, 66132),

Gene: OSmaximus_97 Start: 67321, Stop: 66590, Start Num: 5

Candidate Starts for OSmaximus_97:

(3, 67540), (4, 67438), (Start: 5 @67321 has 253 MA's), (Start: 6 @67282 has 2 MA's), (7, 67255), (9, 67219), (Start: 11 @67168 has 3 MA's), (Start: 12 @67129 has 1 MA's), (17, 66961), (19, 66940), (20, 66928), (22, 66856), (27, 66742), (30, 66703), (32, 66685),

Gene: Olak_99 Start: 67301, Stop: 66570, Start Num: 5

Candidate Starts for Olak_99:

(Start: 5 @67301 has 253 MA's), (Start: 6 @67262 has 2 MA's), (7, 67235), (Start: 11 @67148 has 3 MA's), (Start: 12 @67109 has 1 MA's), (14, 67067), (17, 66941), (19, 66920), (20, 66908), (22, 66836), (27, 66722), (30, 66683), (32, 66665),

Gene: Oline_96 Start: 66923, Stop: 66192, Start Num: 5

Candidate Starts for Oline_96:

(Start: 5 @66923 has 253 MA's), (Start: 6 @66884 has 2 MA's), (7, 66857), (Start: 11 @66770 has 3 MA's), (Start: 12 @66731 has 1 MA's), (14, 66689), (17, 66563), (19, 66542), (20, 66530), (22, 66458), (27, 66344), (30, 66305), (32, 66287),

Gene: Olive_93 Start: 67165, Stop: 66434, Start Num: 5

Candidate Starts for Olive_93:

(Start: 5 @67165 has 253 MA's), (Start: 6 @67126 has 2 MA's), (7, 67099), (Start: 11 @67012 has 3 MA's), (Start: 12 @66973 has 1 MA's), (14, 66931), (17, 66805), (19, 66784), (20, 66772), (22, 66700), (27, 66586), (30, 66547), (32, 66529),

Gene: OliverWalter_96 Start: 67217, Stop: 66486, Start Num: 5

Candidate Starts for OliverWalter_96:

(Start: 5 @67217 has 253 MA's), (Start: 6 @67178 has 2 MA's), (7, 67151), (Start: 11 @67064 has 3 MA's), (Start: 12 @67025 has 1 MA's), (14, 66983), (17, 66857), (19, 66836), (20, 66824), (22, 66752), (27, 66638), (30, 66599), (32, 66581),

Gene: Omniscient_98 Start: 67622, Stop: 66891, Start Num: 5

Candidate Starts for Omniscient_98:

(Start: 5 @67622 has 253 MA's), (Start: 6 @67583 has 2 MA's), (7, 67556), (Start: 11 @67469 has 3 MA's), (Start: 12 @67430 has 1 MA's), (14, 67388), (17, 67262), (19, 67241), (20, 67229), (22, 67157), (27, 67043), (30, 67004), (32, 66986),

Gene: Oosterbaan_97 Start: 67160, Stop: 66429, Start Num: 5

Candidate Starts for Oosterbaan_97:

(Start: 5 @67160 has 253 MA's), (Start: 6 @67121 has 2 MA's), (7, 67094), (Start: 11 @67007 has 3 MA's), (Start: 12 @66968 has 1 MA's), (14, 66926), (17, 66800), (19, 66779), (20, 66767), (22, 66695), (27, 66581), (30, 66542), (32, 66524),

Gene: Orfeu_97 Start: 67281, Stop: 66550, Start Num: 5

Candidate Starts for Orfeu_97:

(Start: 5 @67281 has 253 MA's), (Start: 6 @67242 has 2 MA's), (7, 67215), (Start: 11 @67128 has 3 MA's), (Start: 12 @67089 has 1 MA's), (14, 67047), (17, 66921), (19, 66900), (20, 66888), (22, 66816), (27, 66702), (30, 66663), (32, 66645),

Gene: Orion_95 Start: 66852, Stop: 66121, Start Num: 5

Candidate Starts for Orion_95:

(Start: 5 @66852 has 253 MA's), (Start: 6 @66813 has 2 MA's), (7, 66786), (Start: 11 @66699 has 3 MA's), (Start: 12 @66660 has 1 MA's), (14, 66618), (17, 66492), (19, 66471), (20, 66459), (22, 66387), (27, 66273), (30, 66234), (32, 66216),

Gene: Orwigg_99 Start: 67057, Stop: 66326, Start Num: 5

Candidate Starts for Orwigg_99:

(Start: 5 @67057 has 253 MA's), (Start: 6 @67018 has 2 MA's), (7, 66991), (Start: 11 @66904 has 3 MA's), (Start: 12 @66865 has 1 MA's), (14, 66823), (17, 66697), (19, 66676), (20, 66664), (22, 66592), (27, 66478), (30, 66439), (32, 66421),

Gene: PG1_95 Start: 67424, Stop: 66693, Start Num: 5

Candidate Starts for PG1_95:

(Start: 5 @67424 has 253 MA's), (Start: 6 @67385 has 2 MA's), (7, 67358), (Start: 11 @67271 has 3 MA's), (Start: 12 @67232 has 1 MA's), (14, 67190), (17, 67064), (19, 67043), (20, 67031), (22, 66959),

(27, 66845), (30, 66806), (32, 66788),

Gene: Pacifista_99 Start: 67142, Stop: 66411, Start Num: 5

Candidate Starts for Pacifista_99:

(Start: 5 @67142 has 253 MA's), (Start: 6 @67103 has 2 MA's), (7, 67076), (Start: 11 @66989 has 3 MA's), (Start: 12 @66950 has 1 MA's), (14, 66908), (17, 66782), (19, 66761), (20, 66749), (22, 66677), (27, 66563), (30, 66524), (32, 66506),

Gene: Phamished_96 Start: 66940, Stop: 66209, Start Num: 5

Candidate Starts for Phamished_96:

(Start: 5 @66940 has 253 MA's), (Start: 6 @66901 has 2 MA's), (7, 66874), (Start: 11 @66787 has 3 MA's), (Start: 12 @66748 has 1 MA's), (14, 66706), (17, 66580), (19, 66559), (20, 66547), (22, 66475), (27, 66361), (30, 66322), (32, 66304),

Gene: Phareon_94 Start: 66465, Stop: 65734, Start Num: 5

Candidate Starts for Phareon_94:

(Start: 5 @66465 has 253 MA's), (Start: 6 @66426 has 2 MA's), (7, 66399), (Start: 11 @66312 has 3 MA's), (Start: 12 @66273 has 1 MA's), (14, 66231), (17, 66105), (19, 66084), (20, 66072), (22, 66000), (27, 65886), (30, 65847), (32, 65829),

Gene: PhatCats2014_96 Start: 67425, Stop: 66694, Start Num: 5

Candidate Starts for PhatCats2014_96:

(Start: 5 @67425 has 253 MA's), (Start: 6 @67386 has 2 MA's), (7, 67359), (Start: 11 @67272 has 3 MA's), (Start: 12 @67233 has 1 MA's), (14, 67191), (17, 67065), (19, 67044), (20, 67032), (22, 66960), (27, 66846), (30, 66807), (32, 66789),

Gene: PhatLouie_99 Start: 67298, Stop: 66567, Start Num: 5

Candidate Starts for PhatLouie_99:

(Start: 5 @67298 has 253 MA's), (Start: 6 @67259 has 2 MA's), (7, 67232), (Start: 11 @67145 has 3 MA's), (Start: 12 @67106 has 1 MA's), (14, 67064), (17, 66938), (19, 66917), (20, 66905), (22, 66833), (27, 66719), (30, 66680), (32, 66662),

Gene: PhenghisKhan_97 Start: 66929, Stop: 66198, Start Num: 5

Candidate Starts for PhenghisKhan_97:

(Start: 5 @66929 has 253 MA's), (Start: 6 @66890 has 2 MA's), (7, 66863), (Start: 11 @66776 has 3 MA's), (Start: 12 @66737 has 1 MA's), (14, 66695), (17, 66569), (19, 66548), (20, 66536), (22, 66464), (27, 66350), (30, 66311), (32, 66293),

Gene: Pherdinand_98 Start: 67144, Stop: 66413, Start Num: 5

Candidate Starts for Pherdinand_98:

(Start: 5 @67144 has 253 MA's), (Start: 6 @67105 has 2 MA's), (7, 67078), (Start: 11 @66991 has 3 MA's), (Start: 12 @66952 has 1 MA's), (14, 66910), (17, 66784), (19, 66763), (20, 66751), (22, 66679), (27, 66565), (30, 66526), (32, 66508),

Gene: Phergie_97 Start: 66918, Stop: 66187, Start Num: 5

Candidate Starts for Phergie_97:

(Start: 5 @66918 has 253 MA's), (Start: 6 @66879 has 2 MA's), (7, 66852), (Start: 11 @66765 has 3 MA's), (Start: 12 @66726 has 1 MA's), (14, 66684), (17, 66558), (19, 66537), (20, 66525), (22, 66453), (27, 66339), (30, 66300), (32, 66282),

Gene: Phipps_94 Start: 66718, Stop: 65987, Start Num: 5

Candidate Starts for Phipps_94:

(Start: 5 @66718 has 253 MA's), (Start: 6 @66679 has 2 MA's), (7, 66652), (Start: 11 @66565 has 3 MA's), (Start: 12 @66526 has 1 MA's), (14, 66484), (17, 66358), (19, 66337), (20, 66325), (22, 66253), (27, 66139), (30, 66100), (32, 66082),

Gene: Phleuron_94 Start: 66729, Stop: 65998, Start Num: 5

Candidate Starts for Phleuron_94:

(3, 66948), (4, 66846), (Start: 5 @66729 has 253 MA's), (Start: 6 @66690 has 2 MA's), (Start: 11 @66576 has 3 MA's), (Start: 12 @66537 has 1 MA's), (17, 66369), (19, 66348), (20, 66336), (22, 66264), (27, 66150), (30, 66111), (32, 66093),

Gene: PhrankReynolds_95 Start: 66923, Stop: 66192, Start Num: 5

Candidate Starts for PhrankReynolds_95:

(Start: 5 @66923 has 253 MA's), (Start: 6 @66884 has 2 MA's), (7, 66857), (Start: 11 @66770 has 3 MA's), (Start: 12 @66731 has 1 MA's), (14, 66689), (17, 66563), (19, 66542), (20, 66530), (22, 66458), (27, 66344), (30, 66305), (32, 66287),

Gene: PhrodoBaggins_99 Start: 67298, Stop: 66567, Start Num: 5

Candidate Starts for PhrodoBaggins_99:

(Start: 5 @67298 has 253 MA's), (Start: 6 @67259 has 2 MA's), (7, 67232), (Start: 11 @67145 has 3 MA's), (Start: 12 @67106 has 1 MA's), (14, 67064), (17, 66938), (19, 66917), (20, 66905), (22, 66833), (27, 66719), (30, 66680), (32, 66662),

Gene: Phunky_94 Start: 66800, Stop: 66069, Start Num: 5

Candidate Starts for Phunky_94:

(Start: 5 @66800 has 253 MA's), (Start: 6 @66761 has 2 MA's), (7, 66734), (Start: 11 @66647 has 3 MA's), (Start: 12 @66608 has 1 MA's), (14, 66566), (17, 66440), (19, 66419), (20, 66407), (22, 66335), (27, 66221), (30, 66182), (32, 66164),

Gene: Piglet_0096 Start: 67417, Stop: 66686, Start Num: 5

Candidate Starts for Piglet_0096:

(Start: 5 @67417 has 253 MA's), (Start: 6 @67378 has 2 MA's), (7, 67351), (Start: 11 @67264 has 3 MA's), (Start: 12 @67225 has 1 MA's), (14, 67183), (17, 67057), (19, 67036), (20, 67024), (22, 66952), (27, 66838), (30, 66799), (32, 66781),

Gene: PinheadLarry_96 Start: 67069, Stop: 66338, Start Num: 5

Candidate Starts for PinheadLarry_96:

(Start: 5 @67069 has 253 MA's), (Start: 6 @67030 has 2 MA's), (7, 67003), (Start: 11 @66916 has 3 MA's), (Start: 12 @66877 has 1 MA's), (14, 66835), (17, 66709), (19, 66688), (20, 66676), (22, 66604), (27, 66490), (30, 66451), (32, 66433),

Gene: Pinkman_96 Start: 67141, Stop: 66410, Start Num: 5

Candidate Starts for Pinkman_96:

(Start: 5 @67141 has 253 MA's), (Start: 6 @67102 has 2 MA's), (7, 67075), (Start: 12 @66949 has 1 MA's), (14, 66907), (17, 66781), (19, 66760), (20, 66748), (22, 66676), (27, 66562), (30, 66523), (32, 66505),

Gene: Pipsqueak_94 Start: 66752, Stop: 66021, Start Num: 5

Candidate Starts for Pipsqueak_94:

(Start: 5 @66752 has 253 MA's), (Start: 6 @66713 has 2 MA's), (7, 66686), (Start: 11 @66599 has 3 MA's), (Start: 12 @66560 has 1 MA's), (17, 66392), (19, 66371), (20, 66359), (22, 66287), (27, 66173), (30, 66134), (32, 66116),

Gene: Placalicious_94 Start: 67510, Stop: 66779, Start Num: 5

Candidate Starts for Placalicious_94:

(Start: 5 @67510 has 253 MA's), (Start: 6 @67471 has 2 MA's), (7, 67444), (Start: 11 @67357 has 3 MA's), (Start: 12 @67318 has 1 MA's), (14, 67276), (17, 67150), (19, 67129), (20, 67117), (22, 67045), (27, 66931), (30, 66892), (32, 66874),

Gene: Plmatters_94 Start: 66743, Stop: 66012, Start Num: 5

Candidate Starts for Plmatters_94:

(Start: 5 @66743 has 253 MA's), (Start: 6 @66704 has 2 MA's), (7, 66677), (Start: 11 @66590 has 3 MA's), (Start: 12 @66551 has 1 MA's), (14, 66509), (17, 66383), (19, 66362), (20, 66350), (22, 66278), (27, 66164), (30, 66125), (32, 66107),

Gene: Podrick_95 Start: 66831, Stop: 66100, Start Num: 5

Candidate Starts for Podrick_95:

(Start: 5 @66831 has 253 MA's), (Start: 6 @66792 has 2 MA's), (7, 66765), (Start: 11 @66678 has 3 MA's), (Start: 12 @66639 has 1 MA's), (14, 66597), (17, 66471), (19, 66450), (20, 66438), (22, 66366), (27, 66252), (30, 66213), (32, 66195),

Gene: Pops_94 Start: 66731, Stop: 66201, Start Num: 12

Candidate Starts for Pops_94:

(Start: 12 @66731 has 1 MA's), (14, 66698), (17, 66572), (19, 66551), (20, 66539), (22, 66467), (27, 66353), (30, 66314), (32, 66296),

Gene: Potter_91 Start: 66752, Stop: 66021, Start Num: 5

Candidate Starts for Potter_91:

(Start: 5 @66752 has 253 MA's), (Start: 6 @66713 has 2 MA's), (7, 66686), (Start: 11 @66599 has 3 MA's), (Start: 12 @66560 has 1 MA's), (14, 66518), (17, 66392), (19, 66371), (20, 66359), (22, 66287), (27, 66173), (30, 66134), (32, 66116),

Gene: Prickles_97 Start: 66878, Stop: 66147, Start Num: 5

Candidate Starts for Prickles_97:

(Start: 5 @66878 has 253 MA's), (Start: 6 @66839 has 2 MA's), (7, 66812), (Start: 11 @66725 has 3 MA's), (Start: 12 @66686 has 1 MA's), (14, 66644), (17, 66518), (19, 66497), (20, 66485), (22, 66413), (27, 66299), (30, 66260), (32, 66242),

Gene: ProfessorX_94 Start: 66511, Stop: 65780, Start Num: 5

Candidate Starts for ProfessorX_94:

(Start: 5 @66511 has 253 MA's), (Start: 6 @66472 has 2 MA's), (7, 66445), (Start: 11 @66358 has 3 MA's), (Start: 12 @66319 has 1 MA's), (14, 66277), (17, 66151), (19, 66130), (20, 66118), (22, 66046), (27, 65932), (30, 65893), (32, 65875),

Gene: Puhltonio_92 Start: 66748, Stop: 66017, Start Num: 5

Candidate Starts for Puhltonio_92:

(Start: 5 @66748 has 253 MA's), (Start: 6 @66709 has 2 MA's), (7, 66682), (Start: 11 @66595 has 3 MA's), (Start: 12 @66556 has 1 MA's), (14, 66514), (17, 66388), (19, 66367), (20, 66355), (22, 66283), (27, 66169), (30, 66130), (32, 66112),

Gene: QueenBeane_97 Start: 67075, Stop: 66344, Start Num: 5

Candidate Starts for QueenBeane_97:

(Start: 5 @67075 has 253 MA's), (Start: 6 @67036 has 2 MA's), (7, 67009), (Start: 11 @66922 has 3 MA's), (Start: 12 @66883 has 1 MA's), (14, 66841), (17, 66715), (19, 66694), (20, 66682), (22, 66610), (27, 66496), (30, 66457), (32, 66439),

Gene: Quisquiliae_99 Start: 67086, Stop: 66355, Start Num: 5

Candidate Starts for Quisquilliae_99:

(Start: 5 @67086 has 253 MA's), (Start: 6 @67047 has 2 MA's), (7, 67020), (Start: 11 @66933 has 3 MA's), (Start: 12 @66894 has 1 MA's), (14, 66852), (17, 66726), (19, 66705), (20, 66693), (22, 66621), (27, 66507), (30, 66468), (32, 66450),

Gene: RedMaple_95 Start: 67409, Stop: 66678, Start Num: 5

Candidate Starts for RedMaple_95:

(3, 67628), (4, 67526), (Start: 5 @67409 has 253 MA's), (Start: 6 @67370 has 2 MA's), (7, 67343), (9, 67307), (Start: 11 @67256 has 3 MA's), (Start: 12 @67217 has 1 MA's), (17, 67049), (19, 67028), (20, 67016), (22, 66944), (27, 66830), (30, 66791), (32, 66773),

Gene: Ricotta_98 Start: 66771, Stop: 66040, Start Num: 5

Candidate Starts for Ricotta_98:

(Start: 5 @66771 has 253 MA's), (Start: 6 @66732 has 2 MA's), (7, 66705), (Start: 11 @66618 has 3 MA's), (Start: 12 @66579 has 1 MA's), (14, 66537), (17, 66411), (19, 66390), (20, 66378), (22, 66306), (27, 66192), (30, 66153), (32, 66135),

Gene: Riggan_98 Start: 67256, Stop: 66525, Start Num: 5

Candidate Starts for Riggan_98:

(Start: 5 @67256 has 253 MA's), (Start: 6 @67217 has 2 MA's), (7, 67190), (Start: 11 @67103 has 3 MA's), (Start: 12 @67064 has 1 MA's), (14, 67022), (17, 66896), (19, 66875), (20, 66863), (22, 66791), (27, 66677), (30, 66638), (32, 66620),

Gene: Rimu_100 Start: 67235, Stop: 66504, Start Num: 5

Candidate Starts for Rimu_100:

(Start: 5 @67235 has 253 MA's), (Start: 6 @67196 has 2 MA's), (7, 67169), (Start: 12 @67043 has 1 MA's), (14, 67001), (17, 66875), (19, 66854), (20, 66842), (22, 66770), (27, 66656), (30, 66617), (32, 66599),

Gene: Roliet_94 Start: 66115, Stop: 65384, Start Num: 5

Candidate Starts for Roliet_94:

(Start: 5 @66115 has 253 MA's), (Start: 6 @66076 has 2 MA's), (7, 66049), (Start: 11 @65962 has 3 MA's), (Start: 12 @65923 has 1 MA's), (17, 65755), (19, 65734), (20, 65722), (27, 65536), (30, 65497), (32, 65479),

Gene: Roscoe_95 Start: 67027, Stop: 66401, Start Num: 5

Candidate Starts for Roscoe_95:

(3, 67246), (4, 67144), (Start: 5 @67027 has 253 MA's), (Start: 11 @66979 has 3 MA's), (Start: 12 @66940 has 1 MA's), (14, 66898), (17, 66772), (19, 66751), (20, 66739), (22, 66667), (27, 66553), (30, 66514), (32, 66496),

Gene: Roy17_94 Start: 66481, Stop: 65750, Start Num: 5

Candidate Starts for Roy17_94:

(Start: 5 @66481 has 253 MA's), (Start: 6 @66442 has 2 MA's), (7, 66415), (Start: 12 @66289 has 1 MA's), (14, 66247), (17, 66121), (19, 66100), (20, 66088), (22, 66016), (27, 65902), (30, 65863), (32, 65845),

Gene: SDcharge11_95 Start: 66131, Stop: 65400, Start Num: 5

Candidate Starts for SDcharge11_95:

(3, 66350), (4, 66248), (Start: 5 @66131 has 253 MA's), (Start: 6 @66092 has 2 MA's), (7, 66065), (9, 66029), (Start: 11 @65978 has 3 MA's), (Start: 12 @65939 has 1 MA's), (17, 65771), (19, 65750), (20, 65738), (27, 65552), (30, 65513), (32, 65495),

Gene: Samaymay_97 Start: 67075, Stop: 66344, Start Num: 5

Candidate Starts for Samaymay_97:

(Start: 5 @67075 has 253 MA's), (Start: 6 @67036 has 2 MA's), (7, 67009), (Start: 11 @66922 has 3 MA's), (Start: 12 @66883 has 1 MA's), (14, 66841), (17, 66715), (19, 66694), (20, 66682), (22, 66610), (27, 66496), (30, 66457), (32, 66439),

Gene: SassyCat97_95 Start: 66743, Stop: 66012, Start Num: 5

Candidate Starts for SassyCat97_95:

(Start: 5 @66743 has 253 MA's), (Start: 6 @66704 has 2 MA's), (7, 66677), (Start: 11 @66590 has 3 MA's), (Start: 12 @66551 has 1 MA's), (14, 66509), (17, 66383), (19, 66362), (20, 66350), (22, 66278), (27, 66164), (30, 66125), (32, 66107),

Gene: Schadenfreude_97 Start: 66792, Stop: 66061, Start Num: 5

Candidate Starts for Schadenfreude_97:

(3, 67011), (4, 66909), (Start: 5 @66792 has 253 MA's), (Start: 6 @66753 has 2 MA's), (7, 66726), (9, 66690), (Start: 11 @66639 has 3 MA's), (Start: 12 @66600 has 1 MA's), (17, 66432), (19, 66411), (20, 66399), (22, 66327), (27, 66213), (30, 66174), (32, 66156),

Gene: Schueller_96 Start: 67016, Stop: 66285, Start Num: 5

Candidate Starts for Schueller_96:

(3, 67235), (4, 67133), (Start: 5 @67016 has 253 MA's), (Start: 6 @66977 has 2 MA's), (Start: 11 @66863 has 3 MA's), (Start: 12 @66824 has 1 MA's), (17, 66656), (19, 66635), (20, 66623), (22, 66551), (27, 66437), (30, 66398), (32, 66380),

Gene: Scoot17C_97 Start: 66857, Stop: 66126, Start Num: 5

Candidate Starts for Scoot17C_97:

(Start: 5 @66857 has 253 MA's), (Start: 6 @66818 has 2 MA's), (7, 66791), (Start: 11 @66704 has 3 MA's), (Start: 12 @66665 has 1 MA's), (14, 66623), (17, 66497), (19, 66476), (20, 66464), (22, 66392), (27, 66278), (30, 66239), (32, 66221),

Gene: Scrick_98 Start: 67126, Stop: 66395, Start Num: 5

Candidate Starts for Scrick_98:

(Start: 5 @67126 has 253 MA's), (Start: 6 @67087 has 2 MA's), (7, 67060), (Start: 11 @66973 has 3 MA's), (Start: 12 @66934 has 1 MA's), (14, 66892), (17, 66766), (19, 66745), (20, 66733), (22, 66661), (27, 66547), (30, 66508), (32, 66490),

Gene: Selr12_101 Start: 67167, Stop: 66436, Start Num: 5

Candidate Starts for Selr12_101:

(Start: 5 @67167 has 253 MA's), (Start: 6 @67128 has 2 MA's), (7, 67101), (Start: 11 @67014 has 3 MA's), (Start: 12 @66975 has 1 MA's), (14, 66933), (17, 66807), (19, 66786), (20, 66774), (22, 66702), (27, 66588), (30, 66549), (32, 66531),

Gene: Serendipity_96 Start: 67229, Stop: 66498, Start Num: 5

Candidate Starts for Serendipity_96:

(Start: 5 @67229 has 253 MA's), (Start: 6 @67190 has 2 MA's), (7, 67163), (Start: 11 @67076 has 3 MA's), (Start: 12 @67037 has 1 MA's), (14, 66995), (17, 66869), (19, 66848), (20, 66836), (22, 66764), (27, 66650), (30, 66611), (32, 66593),

Gene: Serpentine_0099 Start: 67309, Stop: 66578, Start Num: 5

Candidate Starts for Serpentine_0099:

(Start: 5 @67309 has 253 MA's), (Start: 6 @67270 has 2 MA's), (7, 67243), (Start: 11 @67156 has 3 MA's), (Start: 12 @67117 has 1 MA's), (14, 67075), (17, 66949), (19, 66928), (20, 66916), (22, 66844), (27, 66730), (30, 66691), (32, 66673),

Gene: Sheila_91 Start: 66309, Stop: 65578, Start Num: 5

Candidate Starts for Sheila_91:

(Start: 5 @66309 has 253 MA's), (Start: 6 @66270 has 2 MA's), (7, 66243), (Start: 11 @66156 has 3 MA's), (Start: 12 @66117 has 1 MA's), (14, 66075), (17, 65949), (19, 65928), (20, 65916), (22, 65844), (27, 65730), (30, 65691), (32, 65673),

Gene: Shenyu_90 Start: 66352, Stop: 65735, Start Num: 12

Candidate Starts for Shenyu_90:

(2, 66787), (8, 66457), (Start: 12 @66352 has 1 MA's), (17, 66184), (18, 66175), (24, 66067), (29, 65950), (30, 65926), (32, 65908), (36, 65815),

Gene: ShiVal_96 Start: 66780, Stop: 66049, Start Num: 5

Candidate Starts for ShiVal_96:

(Start: 5 @66780 has 253 MA's), (Start: 6 @66741 has 2 MA's), (7, 66714), (Start: 11 @66627 has 3 MA's), (Start: 12 @66588 has 1 MA's), (14, 66546), (17, 66420), (19, 66399), (20, 66387), (22, 66315), (27, 66201), (30, 66162), (32, 66144),

Gene: Sigman_96 Start: 66736, Stop: 66005, Start Num: 5

Candidate Starts for Sigman_96:

(Start: 5 @66736 has 253 MA's), (Start: 6 @66697 has 2 MA's), (7, 66670), (Start: 11 @66583 has 3 MA's), (Start: 12 @66544 has 1 MA's), (14, 66502), (17, 66376), (19, 66355), (20, 66343), (22, 66271), (27, 66157), (30, 66118), (32, 66100),

Gene: SilverBell_98 Start: 67190, Stop: 66459, Start Num: 5

Candidate Starts for SilverBell_98:

(Start: 5 @67190 has 253 MA's), (Start: 6 @67151 has 2 MA's), (7, 67124), (Start: 11 @67037 has 3 MA's), (Start: 12 @66998 has 1 MA's), (14, 66956), (17, 66830), (19, 66809), (20, 66797), (22, 66725), (27, 66611), (30, 66572), (32, 66554),

Gene: Simielle_97 Start: 66722, Stop: 65991, Start Num: 5

Candidate Starts for Simielle_97:

(Start: 5 @66722 has 253 MA's), (Start: 6 @66683 has 2 MA's), (7, 66656), (Start: 11 @66569 has 3 MA's), (Start: 12 @66530 has 1 MA's), (14, 66488), (17, 66362), (19, 66341), (20, 66329), (22, 66257), (27, 66143), (30, 66104), (32, 66086),

Gene: Skippy_97 Start: 67151, Stop: 66420, Start Num: 5

Candidate Starts for Skippy_97:

(Start: 5 @67151 has 253 MA's), (Start: 6 @67112 has 2 MA's), (7, 67085), (Start: 11 @66998 has 3 MA's), (Start: 12 @66959 has 1 MA's), (14, 66917), (17, 66791), (19, 66770), (20, 66758), (22, 66686), (27, 66572), (30, 66533), (32, 66515),

Gene: Slatt_99 Start: 67407, Stop: 66676, Start Num: 5

Candidate Starts for Slatt_99:

(Start: 5 @67407 has 253 MA's), (Start: 6 @67368 has 2 MA's), (7, 67341), (Start: 11 @67254 has 3 MA's), (Start: 12 @67215 has 1 MA's), (14, 67173), (17, 67047), (19, 67026), (20, 67014), (22, 66942), (27, 66828), (30, 66789), (32, 66771),

Gene: Soile_98 Start: 67276, Stop: 66545, Start Num: 5

Candidate Starts for Soile_98:

(Start: 5 @67276 has 253 MA's), (Start: 6 @67237 has 2 MA's), (7, 67210), (Start: 11 @67123 has 3 MA's), (Start: 12 @67084 has 1 MA's), (14, 67042), (17, 66916), (19, 66895), (20, 66883), (22, 66811), (27, 66697), (30, 66658), (32, 66640),

Gene: Solosis_95 Start: 66744, Stop: 66013, Start Num: 5

Candidate Starts for Solosis_95:

(Start: 5 @66744 has 253 MA's), (Start: 6 @66705 has 2 MA's), (7, 66678), (Start: 11 @66591 has 3 MA's), (Start: 12 @66552 has 1 MA's), (14, 66510), (17, 66384), (19, 66363), (20, 66351), (22, 66279), (27, 66165), (30, 66126), (32, 66108),

Gene: Sophia_95 Start: 66731, Stop: 66000, Start Num: 5

Candidate Starts for Sophia_95:

(Start: 5 @66731 has 253 MA's), (Start: 6 @66692 has 2 MA's), (7, 66665), (Start: 11 @66578 has 3 MA's), (Start: 12 @66539 has 1 MA's), (14, 66497), (17, 66371), (19, 66350), (20, 66338), (22, 66266), (27, 66152), (30, 66113), (32, 66095),

Gene: Soto_93 Start: 66172, Stop: 65441, Start Num: 5

Candidate Starts for Soto_93:

(Start: 5 @66172 has 253 MA's), (Start: 6 @66133 has 2 MA's), (7, 66106), (Start: 11 @66019 has 3 MA's), (Start: 12 @65980 has 1 MA's), (17, 65812), (19, 65791), (20, 65779), (22, 65707), (27, 65593), (30, 65554), (32, 65536),

Gene: Spartan300_96 Start: 66993, Stop: 66262, Start Num: 5

Candidate Starts for Spartan300_96:

(Start: 5 @66993 has 253 MA's), (Start: 6 @66954 has 2 MA's), (7, 66927), (Start: 11 @66840 has 3 MA's), (Start: 12 @66801 has 1 MA's), (14, 66759), (17, 66633), (19, 66612), (20, 66600), (22, 66528), (27, 66414), (30, 66375), (32, 66357),

Gene: Squid_96 Start: 67021, Stop: 66290, Start Num: 5

Candidate Starts for Squid_96:

(Start: 5 @67021 has 253 MA's), (Start: 6 @66982 has 2 MA's), (7, 66955), (Start: 11 @66868 has 3 MA's), (Start: 12 @66829 has 1 MA's), (14, 66787), (17, 66661), (19, 66640), (20, 66628), (22, 66556), (27, 66442), (30, 66403), (32, 66385),

Gene: Squiggle_96 Start: 66750, Stop: 66019, Start Num: 5

Candidate Starts for Squiggle_96:

(Start: 5 @66750 has 253 MA's), (Start: 6 @66711 has 2 MA's), (7, 66684), (Start: 11 @66597 has 3 MA's), (Start: 12 @66558 has 1 MA's), (14, 66516), (17, 66390), (19, 66369), (20, 66357), (22, 66285), (27, 66171), (30, 66132), (32, 66114),

Gene: Struggle_97 Start: 66848, Stop: 66117, Start Num: 5

Candidate Starts for Struggle_97:

(Start: 5 @66848 has 253 MA's), (Start: 6 @66809 has 2 MA's), (7, 66782), (Start: 11 @66695 has 3 MA's), (Start: 12 @66656 has 1 MA's), (14, 66614), (17, 66488), (19, 66467), (20, 66455), (22, 66383), (27, 66269), (30, 66230), (32, 66212),

Gene: Suffolk_92 Start: 66677, Stop: 65946, Start Num: 5

Candidate Starts for Suffolk_92:

(Start: 5 @66677 has 253 MA's), (Start: 6 @66638 has 2 MA's), (7, 66611), (Start: 11 @66524 has 3 MA's), (Start: 12 @66485 has 1 MA's), (14, 66443), (17, 66317), (19, 66296), (20, 66284), (22, 66212), (27, 66098), (30, 66059), (32, 66041),

Gene: Surely_97 Start: 67313, Stop: 66582, Start Num: 5

Candidate Starts for Surely_97:

(Start: 5 @67313 has 253 MA's), (Start: 6 @67274 has 2 MA's), (7, 67247), (Start: 12 @67121 has 1 MA's), (14, 67079), (17, 66953), (19, 66932), (20, 66920), (22, 66848), (27, 66734), (30, 66695), (32,

66677),

Gene: Swiphy_101 Start: 67298, Stop: 66567, Start Num: 5

Candidate Starts for Swiphy_101:

(Start: 5 @67298 has 253 MA's), (Start: 6 @67259 has 2 MA's), (7, 67232), (Start: 11 @67145 has 3 MA's), (Start: 12 @67106 has 1 MA's), (14, 67064), (17, 66938), (19, 66917), (20, 66905), (22, 66833), (27, 66719), (30, 66680), (32, 66662),

Gene: Swish_98 Start: 67160, Stop: 66429, Start Num: 5

Candidate Starts for Swish_98:

(Start: 5 @67160 has 253 MA's), (Start: 6 @67121 has 2 MA's), (7, 67094), (Start: 11 @67007 has 3 MA's), (Start: 12 @66968 has 1 MA's), (14, 66926), (17, 66800), (19, 66779), (20, 66767), (22, 66695), (27, 66581), (30, 66542), (32, 66524),

Gene: TallGrassMM_96 Start: 66809, Stop: 66078, Start Num: 5

Candidate Starts for TallGrassMM_96:

(Start: 5 @66809 has 253 MA's), (Start: 6 @66770 has 2 MA's), (7, 66743), (Start: 11 @66656 has 3 MA's), (Start: 12 @66617 has 1 MA's), (14, 66575), (17, 66449), (19, 66428), (20, 66416), (22, 66344), (27, 66230), (30, 66191), (32, 66173),

Gene: Telesworld_95 Start: 66883, Stop: 66152, Start Num: 5

Candidate Starts for Telesworld_95:

(Start: 5 @66883 has 253 MA's), (Start: 6 @66844 has 2 MA's), (7, 66817), (Start: 11 @66730 has 3 MA's), (Start: 12 @66691 has 1 MA's), (14, 66649), (17, 66523), (19, 66502), (20, 66490), (22, 66418), (27, 66304), (30, 66265), (32, 66247),

Gene: Thora_95 Start: 67264, Stop: 66533, Start Num: 5

Candidate Starts for Thora_95:

(Start: 5 @67264 has 253 MA's), (Start: 6 @67225 has 2 MA's), (7, 67198), (Start: 11 @67111 has 3 MA's), (Start: 12 @67072 has 1 MA's), (14, 67030), (17, 66904), (19, 66883), (20, 66871), (22, 66799), (27, 66685), (30, 66646), (32, 66628),

Gene: ThreeOh3D2_98 Start: 67417, Stop: 66686, Start Num: 5

Candidate Starts for ThreeOh3D2_98:

(Start: 5 @67417 has 253 MA's), (Start: 6 @67378 has 2 MA's), (7, 67351), (Start: 11 @67264 has 3 MA's), (Start: 12 @67225 has 1 MA's), (14, 67183), (17, 67057), (19, 67036), (20, 67024), (22, 66952), (27, 66838), (30, 66799), (32, 66781),

Gene: Thunderbird_97 Start: 67005, Stop: 66274, Start Num: 5

Candidate Starts for Thunderbird_97:

(Start: 5 @67005 has 253 MA's), (Start: 6 @66966 has 2 MA's), (7, 66939), (Start: 11 @66852 has 3 MA's), (Start: 12 @66813 has 1 MA's), (14, 66771), (17, 66645), (19, 66624), (20, 66612), (22, 66540), (27, 66426), (30, 66387), (32, 66369),

Gene: Timmi_95 Start: 66780, Stop: 66049, Start Num: 5

Candidate Starts for Timmi_95:

(Start: 5 @66780 has 253 MA's), (Start: 6 @66741 has 2 MA's), (7, 66714), (Start: 11 @66627 has 3 MA's), (Start: 12 @66588 has 1 MA's), (14, 66546), (17, 66420), (19, 66399), (20, 66387), (22, 66315), (27, 66201), (30, 66162), (32, 66144),

Gene: TomBombadil_97 Start: 67305, Stop: 66574, Start Num: 5

Candidate Starts for TomBombadil_97:

(Start: 5 @67305 has 253 MA's), (Start: 6 @67266 has 2 MA's), (7, 67239), (Start: 11 @67152 has 3 MA's), (Start: 12 @67113 has 1 MA's), (14, 67071), (17, 66945), (19, 66924), (20, 66912), (22, 66840), (27, 66726), (30, 66687), (32, 66669),

Gene: Tomlarah_97 Start: 67613, Stop: 66882, Start Num: 5

Candidate Starts for Tomlarah_97:

(Start: 5 @67613 has 253 MA's), (Start: 6 @67574 has 2 MA's), (7, 67547), (Start: 11 @67460 has 3 MA's), (Start: 12 @67421 has 1 MA's), (14, 67379), (17, 67253), (19, 67232), (20, 67220), (22, 67148), (27, 67034), (30, 66995), (32, 66977),

Gene: Toni_96 Start: 67209, Stop: 66478, Start Num: 5

Candidate Starts for Toni_96:

(Start: 5 @67209 has 253 MA's), (Start: 6 @67170 has 2 MA's), (7, 67143), (Start: 11 @67056 has 3 MA's), (Start: 12 @67017 has 1 MA's), (14, 66975), (17, 66849), (19, 66828), (20, 66816), (22, 66744), (27, 66630), (30, 66591), (32, 66573),

Gene: Tooj_94 Start: 66423, Stop: 65692, Start Num: 5

Candidate Starts for Tooj_94:

(Start: 5 @66423 has 253 MA's), (Start: 6 @66384 has 2 MA's), (7, 66357), (Start: 11 @66270 has 3 MA's), (Start: 12 @66231 has 1 MA's), (14, 66189), (17, 66063), (19, 66042), (20, 66030), (27, 65844), (30, 65805), (32, 65787),

Gene: True_98 Start: 67125, Stop: 66394, Start Num: 5

Candidate Starts for True_98:

(Start: 5 @67125 has 253 MA's), (Start: 6 @67086 has 2 MA's), (7, 67059), (Start: 11 @66972 has 3 MA's), (Start: 12 @66933 has 1 MA's), (14, 66891), (17, 66765), (19, 66744), (20, 66732), (22, 66660), (27, 66546), (30, 66507), (32, 66489),

Gene: Trypo_97 Start: 67477, Stop: 66746, Start Num: 5

Candidate Starts for Trypo_97:

(Start: 5 @67477 has 253 MA's), (Start: 6 @67438 has 2 MA's), (7, 67411), (Start: 11 @67324 has 3 MA's), (Start: 12 @67285 has 1 MA's), (14, 67243), (17, 67117), (19, 67096), (20, 67084), (22, 67012), (27, 66898), (30, 66859), (32, 66841),

Gene: TyrionL_97 Start: 66839, Stop: 66108, Start Num: 5

Candidate Starts for TyrionL_97:

(3, 67058), (4, 66956), (Start: 5 @66839 has 253 MA's), (Start: 6 @66800 has 2 MA's), (Start: 11 @66686 has 3 MA's), (Start: 12 @66647 has 1 MA's), (17, 66479), (19, 66458), (20, 66446), (22, 66374), (27, 66260), (30, 66221), (32, 66203),

Gene: UAch1_97 Start: 66830, Stop: 66099, Start Num: 5

Candidate Starts for UAch1_97:

(Start: 5 @66830 has 253 MA's), (Start: 6 @66791 has 2 MA's), (7, 66764), (Start: 11 @66677 has 3 MA's), (Start: 12 @66638 has 1 MA's), (14, 66596), (17, 66470), (19, 66449), (20, 66437), (22, 66365), (27, 66251), (30, 66212), (32, 66194),

Gene: UncleHowie_93 Start: 66441, Stop: 65710, Start Num: 5

Candidate Starts for UncleHowie_93:

(Start: 5 @66441 has 253 MA's), (Start: 6 @66402 has 2 MA's), (7, 66375), (Start: 11 @66288 has 3 MA's), (Start: 12 @66249 has 1 MA's), (14, 66207), (17, 66081), (19, 66060), (20, 66048), (22, 65976), (27, 65862), (30, 65823), (32, 65805),

Gene: Usavi_97 Start: 67603, Stop: 66872, Start Num: 5

Candidate Starts for Usavi_97:

(Start: 5 @67603 has 253 MA's), (Start: 6 @67564 has 2 MA's), (7, 67537), (Start: 11 @67450 has 3 MA's), (Start: 12 @67411 has 1 MA's), (14, 67369), (17, 67243), (19, 67222), (20, 67210), (22, 67138), (27, 67024), (30, 66985), (32, 66967),

Gene: Valjean_95 Start: 66985, Stop: 66254, Start Num: 5

Candidate Starts for Valjean_95:

(Start: 5 @66985 has 253 MA's), (Start: 6 @66946 has 2 MA's), (7, 66919), (Start: 12 @66793 has 1 MA's), (14, 66751), (17, 66625), (19, 66604), (20, 66592), (22, 66520), (27, 66406), (30, 66367), (32, 66349),

Gene: Vaticameos_94 Start: 65312, Stop: 64581, Start Num: 5

Candidate Starts for Vaticameos_94:

(Start: 5 @65312 has 253 MA's), (Start: 6 @65273 has 2 MA's), (7, 65246), (Start: 11 @65159 has 3 MA's), (Start: 12 @65120 has 1 MA's), (14, 65078), (17, 64952), (19, 64931), (20, 64919), (22, 64847), (27, 64733), (30, 64694), (32, 64676),

Gene: Veritas_96 Start: 66920, Stop: 66189, Start Num: 5

Candidate Starts for Veritas_96:

(3, 67139), (4, 67037), (Start: 5 @66920 has 253 MA's), (Start: 6 @66881 has 2 MA's), (Start: 11 @66767 has 3 MA's), (Start: 12 @66728 has 1 MA's), (17, 66560), (19, 66539), (20, 66527), (22, 66455), (27, 66341), (30, 66302), (32, 66284),

Gene: Virapocalypse_98 Start: 67107, Stop: 66376, Start Num: 5

Candidate Starts for Virapocalypse_98:

(Start: 5 @67107 has 253 MA's), (Start: 6 @67068 has 2 MA's), (7, 67041), (Start: 11 @66954 has 3 MA's), (Start: 12 @66915 has 1 MA's), (14, 66873), (17, 66747), (19, 66726), (20, 66714), (22, 66642), (27, 66528), (30, 66489), (32, 66471),

Gene: Virgeve_95 Start: 66725, Stop: 65994, Start Num: 5

Candidate Starts for Virgeve_95:

(Start: 5 @66725 has 253 MA's), (Start: 6 @66686 has 2 MA's), (7, 66659), (Start: 12 @66533 has 1 MA's), (14, 66491), (17, 66365), (19, 66344), (20, 66332), (22, 66260), (27, 66146), (30, 66107), (32, 66089),

Gene: Vista_96 Start: 66919, Stop: 66188, Start Num: 5

Candidate Starts for Vista_96:

(Start: 5 @66919 has 253 MA's), (Start: 6 @66880 has 2 MA's), (7, 66853), (Start: 11 @66766 has 3 MA's), (Start: 12 @66727 has 1 MA's), (14, 66685), (17, 66559), (19, 66538), (20, 66526), (22, 66454), (27, 66340), (30, 66301), (32, 66283),

Gene: Vortex_95 Start: 67025, Stop: 66294, Start Num: 5

Candidate Starts for Vortex_95:

(Start: 5 @67025 has 253 MA's), (Start: 6 @66986 has 2 MA's), (7, 66959), (Start: 11 @66872 has 3 MA's), (Start: 12 @66833 has 1 MA's), (14, 66791), (17, 66665), (19, 66644), (20, 66632), (22, 66560), (27, 66446), (30, 66407), (32, 66389),

Gene: Wallhey_98 Start: 67024, Stop: 66293, Start Num: 5

Candidate Starts for Wallhey_98:

(Start: 5 @67024 has 253 MA's), (Start: 6 @66985 has 2 MA's), (7, 66958), (Start: 12 @66832 has 1 MA's), (14, 66790), (17, 66664), (19, 66643), (20, 66631), (22, 66559), (27, 66445), (30, 66406), (32, 66388),

Gene: Waterdiva_98 Start: 67291, Stop: 66560, Start Num: 5

Candidate Starts for Waterdiva_98:

(Start: 5 @67291 has 253 MA's), (Start: 6 @67252 has 2 MA's), (7, 67225), (Start: 11 @67138 has 3 MA's), (Start: 12 @67099 has 1 MA's), (14, 67057), (17, 66931), (19, 66910), (20, 66898), (22, 66826), (27, 66712), (30, 66673), (32, 66655),

Gene: Weher20_94 Start: 67363, Stop: 66632, Start Num: 5

Candidate Starts for Weher20_94:

(Start: 5 @67363 has 253 MA's), (Start: 6 @67324 has 2 MA's), (7, 67297), (Start: 11 @67210 has 3 MA's), (Start: 12 @67171 has 1 MA's), (14, 67129), (17, 67003), (19, 66982), (20, 66970), (22, 66898), (27, 66784), (30, 66745), (32, 66727),

Gene: Windsor_96 Start: 67050, Stop: 66298, Start Num: 5

Candidate Starts for Windsor_96:

(3, 67269), (4, 67167), (Start: 5 @67050 has 253 MA's), (Start: 6 @67011 has 2 MA's), (Start: 11 @66897 has 3 MA's), (Start: 12 @66858 has 1 MA's), (17, 66690), (19, 66669), (20, 66657), (22, 66585), (27, 66471), (30, 66432), (32, 66414),

Gene: Xavier_96 Start: 66918, Stop: 66187, Start Num: 5

Candidate Starts for Xavier_96:

(Start: 5 @66918 has 253 MA's), (Start: 6 @66879 has 2 MA's), (7, 66852), (Start: 11 @66765 has 3 MA's), (Start: 12 @66726 has 1 MA's), (14, 66684), (17, 66558), (19, 66537), (20, 66525), (22, 66453), (27, 66339), (30, 66300), (32, 66282),

Gene: Yoshand_98 Start: 67143, Stop: 66412, Start Num: 5

Candidate Starts for Yoshand_98:

(Start: 5 @67143 has 253 MA's), (Start: 6 @67104 has 2 MA's), (7, 67077), (Start: 11 @66990 has 3 MA's), (Start: 12 @66951 has 1 MA's), (14, 66909), (17, 66783), (19, 66762), (20, 66750), (22, 66678), (27, 66564), (30, 66525), (32, 66507),

Gene: YouGoGlencoco_97 Start: 67033, Stop: 66302, Start Num: 5

Candidate Starts for YouGoGlencoco_97:

(Start: 5 @67033 has 253 MA's), (Start: 6 @66994 has 2 MA's), (7, 66967), (Start: 11 @66880 has 3 MA's), (Start: 12 @66841 has 1 MA's), (14, 66799), (17, 66673), (19, 66652), (20, 66640), (22, 66568), (27, 66454), (30, 66415), (32, 66397),

Gene: Zaider_98 Start: 67408, Stop: 66677, Start Num: 5

Candidate Starts for Zaider_98:

(Start: 5 @67408 has 253 MA's), (Start: 6 @67369 has 2 MA's), (7, 67342), (Start: 11 @67255 has 3 MA's), (Start: 12 @67216 has 1 MA's), (14, 67174), (17, 67048), (19, 67027), (20, 67015), (22, 66943), (27, 66829), (30, 66790), (32, 66772),

Gene: Zelda_97 Start: 67364, Stop: 66633, Start Num: 5

Candidate Starts for Zelda_97:

(Start: 5 @67364 has 253 MA's), (Start: 6 @67325 has 2 MA's), (7, 67298), (Start: 11 @67211 has 3 MA's), (Start: 12 @67172 has 1 MA's), (14, 67130), (17, 67004), (19, 66983), (20, 66971), (22, 66899), (27, 66785), (30, 66746), (32, 66728),

Gene: Zenteno07_105 Start: 69900, Stop: 69328, Start Num: 10

Candidate Starts for Zenteno07_105:

(2, 70275), (Start: 10 @69900 has 1 MA's), (Start: 12 @69834 has 1 MA's), (14, 69792), (15, 69762), (20, 69633), (21, 69615), (22, 69558), (23, 69549), (30, 69399), (31, 69384),

Gene: Zonia_97 Start: 67474, Stop: 66743, Start Num: 5

Candidate Starts for Zonia_97:

(Start: 5 @67474 has 253 MA's), (Start: 6 @67435 has 2 MA's), (7, 67408), (Start: 12 @67282 has 1 MA's), (14, 67240), (17, 67114), (19, 67093), (20, 67081), (22, 67009), (27, 66895), (30, 66856), (32, 66838),