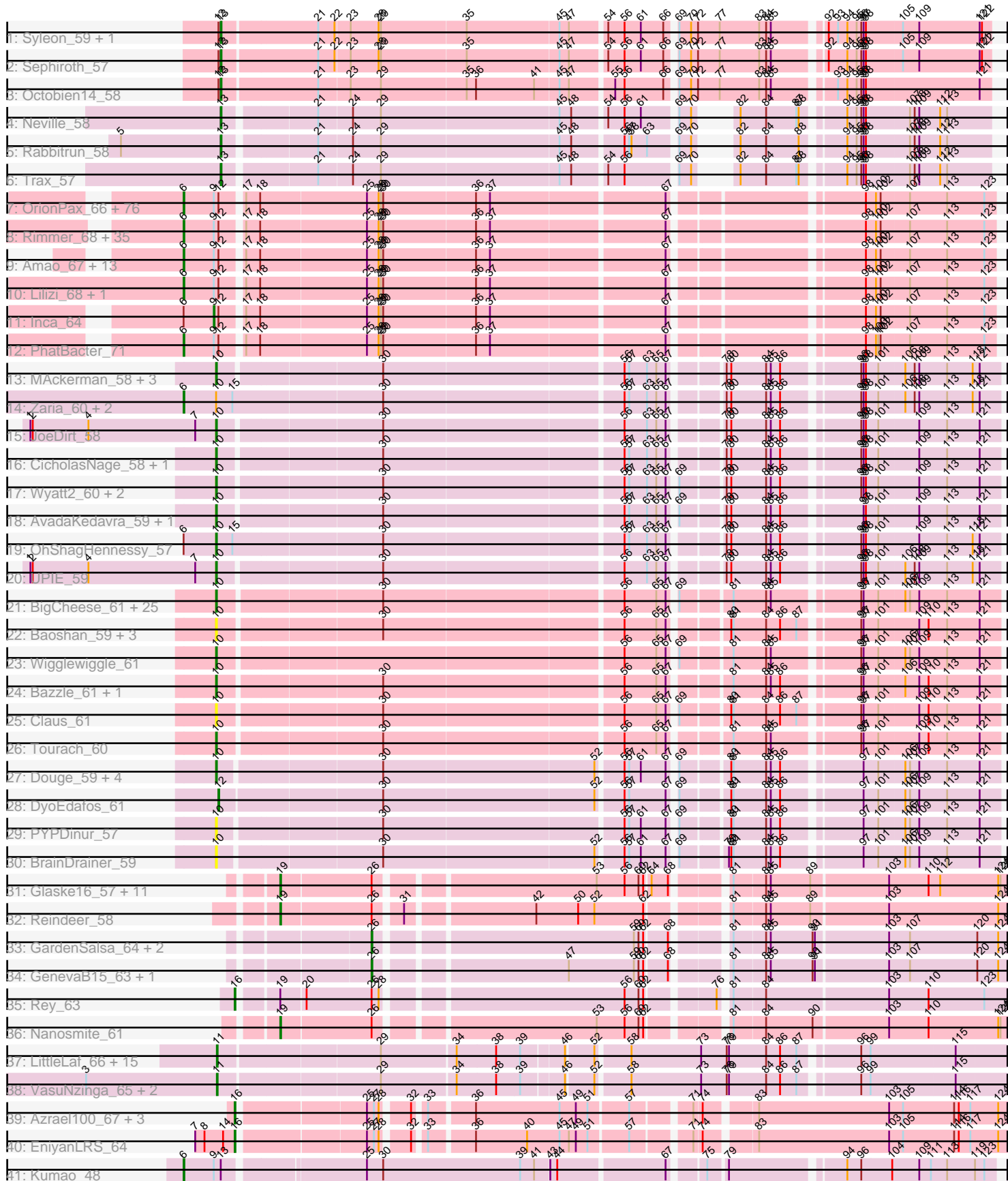


Pham 195397



Note: Tracks are now grouped by subcluster and scaled. Switching in subcluster is indicated by changes in track color. Track scale is now set by default to display the region 30 bp upstream of start 1 to 30 bp downstream of the last possible start. If this default region is judged to be packed too tightly with annotated starts, the track will be further scaled to only show that region of the ORF with annotated starts. This action will be indicated by adding "Zoomed" to the title. For starts, yellow indicates the location of called starts comprised solely of Glimmer/GeneMark auto-annotations, green indicates the location of called starts with at least 1 manual gene annotation.

Pham 195397 Report

This analysis was run 12/09/24 on database version 580.

Pham number 195397 has 243 members, 23 are drafts.

Phages represented in each track:

- Track 1 : Syleon_59, Kudefre_58
- Track 2 : Sephiroth_57
- Track 3 : Octobien14_58
- Track 4 : Neville_58
- Track 5 : Rabbitrun_58
- Track 6 : Trax_57
- Track 7 : OrionPax_66, Tuco_68, NoSleep_68, TBrady12_70, MadamMonkfish_67, BilboSwaggins_66, Czyszczonek_68, Nala_69, Miniwave_62, Mindy_66, SirDuracell_66, TeardropMSU_63, Manda_67, Dumbo_67, RiverMonster_67, BigBubba_67, Pumpkin_70, Easy2Say_68, IHOP_65, xkcd_70, Teaspoon_68, ABCat_64, Adnama_71, Elph10_67, Bruin_64, SophKB_64, Filch_68, Eureka_65, Youngblood_70, Murphy_67, CrystalP_66, Murica_70, Bask21_67, Cjw1_67, Elite2014_66, Maxxinista_69, Misfit_68, Thresher_69, ChosenOne_67, BaboJay_64, Terminus_70, Highbury_66, Goku_65, Pharsalus_64, Kostya_67, Dusk_64, Asriel_66, BadStone_64, Gator_65, Emmina_67, Toto_65, HufflyPuff_70, Porky_66, Moldemort_70, DoctorDiddles_66, Phaja_65, ShamWow_67, MPhalcon_68, Tarkin_66, Traaww1_63, Rakim_68, Paperbeatsrock_66, Simpliphy_66, Henry_65, FireRed_71, StellaBean_65, Saints25_66, Contagion_63, Barbarian_66, Ukulele_62, Lilpickle_66, Mosby_63, Phrux_64, Wiggin_69, Xandras_66, MISSy_68, Stank_70
- Track 8 : Rimmer_68, YassJohnny_64, NelitzaMV_65, Marshmallow_65, Tomaszewski_62, Cactus_70, Sotrice96_68, Sassay_62, Hoonter_70, Daikon_69, Buck_68, GoldenSpark_71, Glexan_66, Kanye_64, AmericanBeauty_71, Goldilocks_70, 244_68, FairyPath_67, Cookies_64, Harella_67, Gemini_72, Gage_69, Balomoji_67, Command613_69, Kimchi_71, Icee_68, Argent26_71, GooberAzure_70, Pat3_65, StolenFromERC_70, Holt_72, Quallification_68, Flypotenuse_63, Myrale_67, Willez_62, ShereKhan_66
- Track 9 : Amao_67, Palpatine_69, Lilac_69, BugsBunny_67, ChotaBhai_67, Hopey_67, Policronamos_71, Nimrod_68, Stark_68, JeTaime_67, HanKaySha_67, DrDrey_67, Petra64142_71, Phaux_69
- Track 10 : Lilizi_68, Bench_70
- Track 11 : Inca_64
- Track 12 : PhatBacter_71
- Track 13 : MAckerman_58, LeBron_58, DirkDirk_56, Halena_57
- Track 14 : Zaria_60, Wamburggrxpress_59, Calm_60
- Track 15 : JoeDirt_58
- Track 16 : CicholasNage_58, Acquire49_59
- Track 17 : Wyatt2_60, Rose5_59, Tyson_59

- Track 18 : AvadaKedavra_59, Silverleaf_59
- Track 19 : OhShagHennessy_57
- Track 20 : UPIE_59
- Track 21 : BigCheese_61, Faith1_61, Miley16_61, Zakai_62, DrSeegs_61, Gardann_62, Finemlucis_61, BobsGarage_61, Gabriela_58, GuuelaD_60, Nicholasp3_61, MkaliMitinis3_62, Breezona_61, Crossroads_61, Sarshaun_61, Itos_60, Kahlid_61, Rumpelstiltskin_60, Vetrix_61, Netyap_62, Wilder_62, LilDestine_61, Loadrie_60, Hafay_62, Lewan_62, Winky_61
- Track 22 : Baoshan_59, ZhongYanYuan_59, DanBing_61, DHan_62
- Track 23 : Wigglewiggles_61
- Track 24 : Bazzle_61, Archie_61
- Track 25 : Claus_61
- Track 26 : Tourach_60
- Track 27 : Douge_59, Chaser_57, Sheng711_59, Quby_59, Douzhi_59
- Track 28 : DyoEdafos_61
- Track 29 : PYPDinur_57
- Track 30 : BrainDrainer_59
- Track 31 : Glaske16_57, LilhomieP_55, Skinny_58, PegLeg_56, TyDawg_56, SlimJimmy_55, Diminimus_57, Auspice_56, Bricole_56, Dulcita_57, Bongo_56, IPhane7_56
- Track 32 : Reindeer_58
- Track 33 : GardenSalsa_64, Estes_64, MrMagoo_65
- Track 34 : GenevaB15_63, Aziz_62
- Track 35 : Rey_63
- Track 36 : Nanosmite_61
- Track 37 : LittleLaf_66, FeliMaine_65, JoieB_67, Marvin_62, Blackbeetle_66, Lilbit_66, MosMoris_63, Caprice_61, RedRaider77_65, Corazon_64, Poise_66, Clarkson_67, Huphlepuuff_68, Gattaca_64, Raela_66, Tesla_63
- Track 38 : VasuNzinga_65, Beelzebub_70, Pringar_65
- Track 39 : Azrael100_67, MaryV_67, Wildcat_67, Cosmo_68
- Track 40 : EniyanLRS_64
- Track 41 : Kumao_48

Summary of Final Annotations (See graph section above for start numbers):

The start number called the most often in the published annotations is 6, it was called in 126 of the 220 non-draft genes in the pham.

Genes that call this "Most Annotated" start:

- 244_68, ABCat_64, Adnama_71, Amao_67, AmericanBeauty_71, Argent26_71, Asriel_66, BaboJay_64, BadStone_64, Balomoji_67, Barbarian_66, Bask21_67, Bench_70, BigBubba_67, BilboSwaggins_66, Bruin_64, Buck_68, BugsBunny_67, Cactus_70, Calm_60, ChosenOne_67, ChotaBhai_67, Cjw1_67, Command613_69, Contagion_63, Cookies_64, CrystalP_66, Czyszczonek1_68, Daikon_69, DoctorDiddles_66, DrDrey_67, Dumbo_67, Dusk_64, Easy2Say_68, Elite2014_66, Elph10_67, Emmina_67, Eureka_65, FairyPath_67, Filch_68, FireRed_71, Flypotenuse_63, Gage_69, Gator_65, Gemini_72, Glexan_66, Goku_65, GoldenSpark_71, Goldilocks_70, GooberAzure_70, HanKaySha_67, Harella_67, Henry_65, Highbury_66, Holt_72, Hoonter_70, Hopey_67, HufflyPuff_70, IHOP_65, Icee_68, JeTaime_67, Kanye_64, Kimchi_71, Kostya_67, Kumao_48, Lilac_69,

Lilizi_68, Lilpickle_66, MISSy_68, MPhalcon_68, MadamMonkfish_67, Manda_67, Marshmallow_65, Maxxinista_69, Mindy_66, Miniwave_62, Misfit_68, Moldemort_70, Mosby_63, Murica_70, Murphy_67, Myrale_67, Nala_69, NelitzaMV_65, Nimrod_68, NoSleep_68, OrionPax_66, Palpatine_69, Paperbeatsrock_66, Pat3_65, Petra64142_71, Phaja_65, Pharsalus_64, PhatBacter_71, Phaux_69, Phrux_64, Policronamos_71, Porky_66, Pumpkin_70, Quallification_68, Rakim_68, Rimmer_68, RiverMonster_67, Saints25_66, Sassay_62, ShamWow_67, ShereKhan_66, Simpliphy_66, SirDuracell_66, SophKB_64, Sotrice96_68, Stank_70, Stark_68, StellaBean_65, StolenFromERC_70, TBrady12_70, Tarkin_66, TeardropMSU_63, Teaspoon_68, Terminus_70, Thresher_69, Tomaszewski_62, Toto_65, Traaww1_63, Tuco_68, Ukulele_62, Wamburggrxpress_59, Wiggin_69, Willez_62, Xandras_66, YassJohnny_64, Youngblood_70, Zaria_60, xkcd_70,

Genes that have the "Most Annotated" start but do not call it:

- Inca_64, OhShagHennessy_57,

Genes that do not have the "Most Annotated" start:

- Acquire49_59, Archie_61, Auspice_56, AvadaKedavra_59, Aziz_62, Azrael100_67, Baoshan_59, Bazzle_61, Beelzebub_70, BigCheese_61, Blackbeetle_66, BobsGarage_61, Bongo_56, BrainDrainer_59, Breezona_61, Bricole_56, Caprice_61, Chaser_57, CicholasNage_58, Clarkson_67, Claus_61, Corazon_64, Cosmo_68, Crossroads_61, DHan_62, DanBing_61, Diminimus_57, DirkDirk_56, Douge_59, Douzhi_59, DrSeegs_61, Dulcita_57, DyoEdafos_61, EniyanLRS_64, Estes_64, Faith1_61, FeliMaine_65, Finemlucis_61, Gabriela_58, Gardann_62, GardenSalsa_64, Gattaca_64, GenevaB15_63, Glaske16_57, GuuelaD_60, Hafay_62, Halena_57, Huphlepuuff_68, IPhone7_56, Itos_60, JoeDirt_58, JoieB_67, Kahlid_61, Kudrefre_58, LeBron_58, Lewan_62, LilDestine_61, Lilbit_66, LilhomieP_55, LittleLaf_66, Loadrie_60, MAckerman_58, Marvin_62, MaryV_67, Miley16_61, MkaliMitinis3_62, MosMoris_63, MrMagoo_65, Nanosmite_61, Netyap_62, Neville_58, Nicholasp3_61, Octobien14_58, PYPDinur_57, PegLeg_56, Poise_66, Pringar_65, Quby_59, Rabbitrun_58, Raela_66, RedRaider77_65, Reindeer_58, Rey_63, Rose5_59, Rumpelstiltskin_60, Sarshaun_61, Sephiroth_57, Sheng711_59, Silverleaf_59, Skinny_58, SlimJimmy_55, Syleon_59, Tesla_63, Tourach_60, Trax_57, TyDawg_56, Tyson_59, UPIE_59, VasuNzinga_65, Vetrix_61, Wigglewiggles_61, Wildcat_67, Wilder_62, Winky_61, Wyatt2_60, Zakai_62, ZhongYanYuan_59,

Summary by start number:

Start 6:

- Found in 136 of 243 (56.0%) of genes in pham
- Manual Annotations of this start: 126 of 220
- Called 98.5% of time when present
- Phage (with cluster) where this start called: 244_68 (E), ABCat_64 (E), Adnama_71 (E), Amao_67 (E), AmericanBeauty_71 (E), Argent26_71 (E), Asriel_66 (E), BaboJay_64 (E), BadStone_64 (E), Balomoji_67 (E), Barbarian_66 (E), Bask21_67 (E), Bench_70 (E), BigBubba_67 (E), BilboSwaggins_66 (E), Bruin_64 (E), Buck_68 (E), BugsBunny_67 (E), Cactus_70 (E), Calm_60 (L1), ChosenOne_67 (E), ChotaBhai_67 (E), Cjw1_67 (E), Command613_69 (E), Contagion_63 (E), Cookies_64 (E), CrystalP_66 (E), Czyszczon1_68 (E), Daikon_69 (E), DoctorDiddles_66 (E), DrDrey_67 (E), Dumbo_67 (E), Dusk_64 (E), Easy2Say_68 (E), Elite2014_66 (E), Elph10_67 (E), Emmina_67 (E), Eureka_65 (E), FairyPath_67 (E), Filch_68 (E), FireRed_71 (E), Flypotenuse_63 (E), Gage_69 (E), Gator_65 (E),

Gemini_72 (E), Glexan_66 (E), Goku_65 (E), GoldenSpark_71 (E), Goldilocks_70 (E), GooberAzure_70 (E), HanKaySha_67 (E), Harella_67 (E), Henry_65 (E), Highbury_66 (E), Holt_72 (E), Hoonter_70 (E), Hopey_67 (E), HuffyPuff_70 (E), IHOP_65 (E), Icee_68 (E), JeTaime_67 (E), Kanye_64 (E), Kimchi_71 (E), Kostya_67 (E), Kumao_48 (singleton), Lilac_69 (E), Lilizi_68 (E), Lilpickle_66 (E), MISSy_68 (E), MPhalcon_68 (E), MadamMonkfish_67 (E), Manda_67 (E), Marshmallow_65 (E), Maxxinista_69 (E), Mindy_66 (E), Miniwave_62 (E), Misfit_68 (E), Moldemort_70 (E), Mosby_63 (E), Murica_70 (E), Murphy_67 (E), Myrale_67 (E), Nala_69 (E), NelitzaMV_65 (E), Nimrod_68 (E), NoSleep_68 (E), OrionPax_66 (E), Palpatine_69 (E), Paperbeatsrock_66 (E), Pat3_65 (E), Petra64142_71 (E), Phaja_65 (E), Pharsalus_64 (E), PhatBacter_71 (E), Phaux_69 (E), Phrux_64 (E), Policronamos_71 (E), Porky_66 (E), Pumpkin_70 (E), Quallification_68 (E), Rakim_68 (E), Rimmer_68 (E), RiverMonster_67 (E), Saints25_66 (E), Sassay_62 (E), ShamWow_67 (E), ShereKhan_66 (E), Simpliphy_66 (E), SirDuracell_66 (E), SophKB_64 (E), Sotrice96_68 (E), Stank_70 (E), Stark_68 (E), StellaBean_65 (E), StolenFromERC_70 (E), TBrady12_70 (E), Tarkin_66 (E), TeardropMSU_63 (E), Teaspoon_68 (E), Terminus_70 (E), Thresher_69 (E), Tomaszewski_62 (E), Toto_65 (E), Traaww1_63 (E), Tuco_68 (E), Ukulele_62 (E), Wamburggrxpress_59 (L1), Wigg_69 (E), Willez_62 (E), Xandras_66 (E), YassJohnny_64 (E), Youngblood_70 (E), Zaria_60 (L1), xkcd_70 (E),

Start 9:

- Found in 132 of 243 (54.3%) of genes in pham
- Manual Annotations of this start: 1 of 220
- Called 0.8% of time when present
- Phage (with cluster) where this start called: Inca_64 (E),

Start 10:

- Found in 59 of 243 (24.3%) of genes in pham
- Manual Annotations of this start: 44 of 220
- Called 94.9% of time when present
- Phage (with cluster) where this start called: Acquire49_59 (L1), Archie_61 (L2), AvadaKedavra_59 (L1), Baoshan_59 (L2), Bazzle_61 (L2), BigCheese_61 (L2), BobsGarage_61 (L2), BrainDrainer_59 (L4), Breezonia_61 (L2), Chaser_57 (L4), CicholasNage_58 (L1), Claus_61 (L2), Crossroads_61 (L2), DHan_62 (L2), DanBing_61 (L2), DirkDirk_56 (L1), Douge_59 (L4), Douzhi_59 (L4), DrSeegs_61 (L2), Faith1_61 (L2), Finemlucis_61 (L2), Gabriela_58 (L2), Gardann_62 (L2), GuuelaD_60 (L2), Hafay_62 (L2), Halena_57 (L1), Itos_60 (L2), JoeDirt_58 (L1), Kahlid_61 (L2), LeBron_58 (L1), Lewan_62 (L2), LilDestine_61 (L2), Loadrie_60 (L2), MAckerman_58 (L1), Miley16_61 (L2), MkaliMitinis3_62 (L2), Netyap_62 (L2), Nicholasp3_61 (L2), OhShagHennessy_57 (L1), PYPDinur_57 (L4), Quby_59 (L4), Rose5_59 (L1), Rumpelstiltskin_60 (L2), Sarshaun_61 (L2), Sheng711_59 (L4), Silverleaf_59 (L1), Tourach_60 (L2), Tyson_59 (L1), UPIE_59 (L1), Vetric_61 (L2), Wigglewigg_61 (L2), Wilder_62 (L2), Winky_61 (L2), Wyatt2_60 (L1), Zakai_62 (L2), ZhongYanYuan_59 (L2),

Start 11:

- Found in 19 of 243 (7.8%) of genes in pham
- Manual Annotations of this start: 16 of 220
- Called 100.0% of time when present
- Phage (with cluster) where this start called: Beelzebub_70 (S), Blackbeetle_66 (S), Caprice_61 (S), Clarkson_67 (S), Corazon_64 (S), FeliMaine_65 (S), Gattaca_64 (S), Huphlepuuff_68 (S), JoieB_67 (S), Lilbit_66 (S), LittleLaf_66 (S), Marvin_62 (S),

MosMoris_63 (S), Poise_66 (S), Pringar_65 (S), Raela_66 (S), RedRaider77_65 (S), Tesla_63 (S), VasuNzinga_65 (S),

Start 12:

- Found in 136 of 243 (56.0%) of genes in pham
- Manual Annotations of this start: 1 of 220
- Called 0.7% of time when present
- Phage (with cluster) where this start called: DyoEdafos_61 (L4),

Start 13:

- Found in 8 of 243 (3.3%) of genes in pham
- Manual Annotations of this start: 7 of 220
- Called 87.5% of time when present
- Phage (with cluster) where this start called: Kudrefre_58 (DU1), Neville_58 (DU2), Octobien14_58 (DU1), Rabbitrun_58 (DU2), Sephiroth_57 (DU1), Syleon_59 (DU1), Trax_57 (DU2),

Start 16:

- Found in 6 of 243 (2.5%) of genes in pham
- Manual Annotations of this start: 6 of 220
- Called 100.0% of time when present
- Phage (with cluster) where this start called: Azrael100_67 (V), Cosmo_68 (V), EniyanLRS_64 (V), MaryV_67 (V), Rey_63 (M2), Wildcat_67 (V),

Start 19:

- Found in 15 of 243 (6.2%) of genes in pham
- Manual Annotations of this start: 14 of 220
- Called 93.3% of time when present
- Phage (with cluster) where this start called: Auspice_56 (M1), Bongo_56 (M1), Bricole_56 (M1), Diminimus_57 (M1), Dulcita_57 (M1), Glaske16_57 (M1), IPhane7_56 (M1), LilhomieP_55 (M1), Nanosmite_61 (M3), PegLeg_56 (M1), Reindeer_58 (M1), Skinny_58 (M1), SlimJimmy_55 (M1), TyDawg_56 (M1),

Start 26:

- Found in 20 of 243 (8.2%) of genes in pham
- Manual Annotations of this start: 5 of 220
- Called 25.0% of time when present
- Phage (with cluster) where this start called: Aziz_62 (M2), Estes_64 (M2), GardenSalsa_64 (M2), GenevaB15_63 (M2), MrMagoo_65 (M2),

Summary by clusters:

There are 12 clusters represented in this pham: singleton, E, M2, S, DU1, L4, M1, M3, L1, L2, DU2, V,

Info for manual annotations of cluster DU1:

- Start number 13 was manually annotated 4 times for cluster DU1.

Info for manual annotations of cluster DU2:

- Start number 13 was manually annotated 3 times for cluster DU2.

Info for manual annotations of cluster E:

- Start number 6 was manually annotated 122 times for cluster E.

- Start number 9 was manually annotated 1 time for cluster E.

Info for manual annotations of cluster L1:

- Start number 6 was manually annotated 3 times for cluster L1.
- Start number 10 was manually annotated 14 times for cluster L1.

Info for manual annotations of cluster L2:

- Start number 10 was manually annotated 28 times for cluster L2.

Info for manual annotations of cluster L4:

- Start number 10 was manually annotated 2 times for cluster L4.
- Start number 12 was manually annotated 1 time for cluster L4.

Info for manual annotations of cluster M1:

- Start number 19 was manually annotated 13 times for cluster M1.

Info for manual annotations of cluster M2:

- Start number 16 was manually annotated 1 time for cluster M2.
- Start number 26 was manually annotated 5 times for cluster M2.

Info for manual annotations of cluster M3:

- Start number 19 was manually annotated 1 time for cluster M3.

Info for manual annotations of cluster S:

- Start number 11 was manually annotated 16 times for cluster S.

Info for manual annotations of cluster V:

- Start number 16 was manually annotated 5 times for cluster V.

Gene Information:

Gene: 244_68 Start: 44193, Stop: 45161, Start Num: 6

Candidate Starts for 244_68:

(Start: 6 @44193 has 126 MA's), (Start: 9 @44232 has 1 MA's), (Start: 12 @44238 has 1 MA's), (17, 44262), (18, 44280), (25, 44412), (28, 44427), (29, 44430), (30, 44433), (36, 44550), (37, 44568), (67, 44781), (98, 44997), (100, 45009), (102, 45015), (107, 45051), (113, 45099), (123, 45147),

Gene: ABCat_64 Start: 44540, Stop: 45508, Start Num: 6

Candidate Starts for ABCat_64:

(Start: 6 @44540 has 126 MA's), (Start: 9 @44579 has 1 MA's), (Start: 12 @44585 has 1 MA's), (17, 44609), (18, 44627), (25, 44759), (28, 44774), (29, 44777), (30, 44780), (36, 44897), (37, 44915), (67, 45128), (98, 45344), (100, 45356), (102, 45362), (107, 45398), (113, 45446), (123, 45494),

Gene: Acquire49_59 Start: 41447, Stop: 42379, Start Num: 10

Candidate Starts for Acquire49_59:

(Start: 10 @41447 has 44 MA's), (30, 41645), (56, 41942), (57, 41948), (63, 41969), (65, 41981), (67, 41993), (78, 42047), (80, 42053), (84, 42098), (85, 42104), (86, 42116), (96, 42203), (97, 42206), (98, 42209), (101, 42224), (109, 42275), (113, 42311), (121, 42353),

Gene: Adnama_71 Start: 44563, Stop: 45531, Start Num: 6

Candidate Starts for Adnama_71:

(Start: 6 @44563 has 126 MA's), (Start: 9 @44602 has 1 MA's), (Start: 12 @44608 has 1 MA's), (17, 44632), (18, 44650), (25, 44782), (28, 44797), (29, 44800), (30, 44803), (36, 44920), (37, 44938), (67, 445151), (98, 45367), (100, 45379), (102, 45385), (107, 45421), (113, 45469), (123, 45517),

Gene: Amao_67 Start: 43948, Stop: 44916, Start Num: 6

Candidate Starts for Amao_67:

(Start: 6 @43948 has 126 MA's), (Start: 9 @43987 has 1 MA's), (Start: 12 @43993 has 1 MA's), (17, 44017), (18, 44035), (25, 44167), (28, 44182), (29, 44185), (30, 44188), (36, 44305), (37, 44323), (67, 44536), (98, 44752), (100, 44764), (102, 44770), (107, 44806), (113, 44854), (123, 44902),

Gene: AmericanBeauty_71 Start: 44706, Stop: 45674, Start Num: 6

Candidate Starts for AmericanBeauty_71:

(Start: 6 @44706 has 126 MA's), (Start: 9 @44745 has 1 MA's), (Start: 12 @44751 has 1 MA's), (17, 44775), (18, 44793), (25, 44925), (28, 44940), (29, 44943), (30, 44946), (36, 45063), (37, 45081), (67, 45294), (98, 45510), (100, 45522), (102, 45528), (107, 45564), (113, 45612), (123, 45660),

Gene: Archie_61 Start: 43741, Stop: 44673, Start Num: 10

Candidate Starts for Archie_61:

(Start: 10 @43741 has 44 MA's), (30, 43939), (56, 44236), (65, 44275), (67, 44287), (81, 44350), (84, 44392), (85, 44398), (86, 44410), (96, 44497), (97, 44500), (101, 44518), (106, 44551), (109, 44569), (110, 44581), (113, 44605), (121, 44647),

Gene: Argent26_71 Start: 44344, Stop: 45312, Start Num: 6

Candidate Starts for Argent26_71:

(Start: 6 @44344 has 126 MA's), (Start: 9 @44383 has 1 MA's), (Start: 12 @44389 has 1 MA's), (17, 44413), (18, 44431), (25, 44563), (28, 44578), (29, 44581), (30, 44584), (36, 44701), (37, 44719), (67, 44932), (98, 45148), (100, 45160), (102, 45166), (107, 45202), (113, 45250), (123, 45298),

Gene: Asriel_66 Start: 42900, Stop: 43868, Start Num: 6

Candidate Starts for Asriel_66:

(Start: 6 @42900 has 126 MA's), (Start: 9 @42939 has 1 MA's), (Start: 12 @42945 has 1 MA's), (17, 42969), (18, 42987), (25, 43119), (28, 43134), (29, 43137), (30, 43140), (36, 43257), (37, 43275), (67, 43488), (98, 43704), (100, 43716), (102, 43722), (107, 43758), (113, 43806), (123, 43854),

Gene: Auspice_56 Start: 39488, Stop: 40348, Start Num: 19

Candidate Starts for Auspice_56:

(Start: 19 @39488 has 14 MA's), (Start: 26 @39602 has 5 MA's), (53, 39860), (56, 39896), (60, 39914), (62, 39920), (64, 39926), (68, 39947), (81, 40004), (84, 40043), (85, 40049), (89, 40100), (103, 40196), (110, 40247), (112, 40262), (124, 40337), (125, 40340),

Gene: AvadaKedavra_59 Start: 41520, Stop: 42452, Start Num: 10

Candidate Starts for AvadaKedavra_59:

(Start: 10 @41520 has 44 MA's), (30, 41718), (56, 42015), (57, 42021), (63, 42042), (65, 42054), (67, 42066), (69, 42072), (78, 42120), (80, 42126), (84, 42171), (85, 42177), (86, 42189), (97, 42279), (98, 42282), (101, 42297), (109, 42348), (113, 42384), (121, 42426),

Gene: Aziz_62 Start: 41623, Stop: 42369, Start Num: 26

Candidate Starts for Aziz_62:

(Start: 26 @41623 has 5 MA's), (47, 41845), (59, 41929), (60, 41935), (62, 41941), (68, 41968), (81, 42025), (84, 42064), (85, 42070), (90, 42124), (91, 42127), (103, 42217), (107, 42244), (120, 42331), (124, 42358),

Gene: Azrael100_67 Start: 44691, Stop: 45596, Start Num: 16

Candidate Starts for Azrael100_67:

(Start: 16 @44691 has 6 MA's), (25, 44844), (27, 44853), (28, 44859), (32, 44889), (33, 44901), (36, 44952), (45, 45060), (49, 45081), (51, 45096), (57, 45144), (71, 45210), (74, 45219), (83, 45276), (103, 45444), (105, 45462), (114, 45528), (116, 45534), (117, 45549), (124, 45585),

Gene: BaboJay_64 Start: 43737, Stop: 44705, Start Num: 6

Candidate Starts for BaboJay_64:

(Start: 6 @43737 has 126 MA's), (Start: 9 @43776 has 1 MA's), (Start: 12 @43782 has 1 MA's), (17, 43806), (18, 43824), (25, 43956), (28, 43971), (29, 43974), (30, 43977), (36, 44094), (37, 44112), (67, 44325), (98, 44541), (100, 44553), (102, 44559), (107, 44595), (113, 44643), (123, 44691),

Gene: BadStone_64 Start: 44109, Stop: 45077, Start Num: 6

Candidate Starts for BadStone_64:

(Start: 6 @44109 has 126 MA's), (Start: 9 @44148 has 1 MA's), (Start: 12 @44154 has 1 MA's), (17, 44178), (18, 44196), (25, 44328), (28, 44343), (29, 44346), (30, 44349), (36, 44466), (37, 44484), (67, 44697), (98, 44913), (100, 44925), (102, 44931), (107, 44967), (113, 45015), (123, 45063),

Gene: Balomoji_67 Start: 44670, Stop: 45638, Start Num: 6

Candidate Starts for Balomoji_67:

(Start: 6 @44670 has 126 MA's), (Start: 9 @44709 has 1 MA's), (Start: 12 @44715 has 1 MA's), (17, 44739), (18, 44757), (25, 44889), (28, 44904), (29, 44907), (30, 44910), (36, 45027), (37, 45045), (67, 45258), (98, 45474), (100, 45486), (102, 45492), (107, 45528), (113, 45576), (123, 45624),

Gene: Baoshan_59 Start: 43439, Stop: 44371, Start Num: 10

Candidate Starts for Baoshan_59:

(Start: 10 @43439 has 44 MA's), (30, 43637), (56, 43934), (65, 43973), (67, 43985), (80, 44045), (81, 44048), (84, 44090), (86, 44108), (87, 44129), (96, 44195), (97, 44198), (101, 44216), (109, 44267), (110, 44279), (113, 44303), (121, 44345),

Gene: Barbarian_66 Start: 42900, Stop: 43868, Start Num: 6

Candidate Starts for Barbarian_66:

(Start: 6 @42900 has 126 MA's), (Start: 9 @42939 has 1 MA's), (Start: 12 @42945 has 1 MA's), (17, 42969), (18, 42987), (25, 43119), (28, 43134), (29, 43137), (30, 43140), (36, 43257), (37, 43275), (67, 43488), (98, 43704), (100, 43716), (102, 43722), (107, 43758), (113, 43806), (123, 43854),

Gene: Bask21_67 Start: 43511, Stop: 44479, Start Num: 6

Candidate Starts for Bask21_67:

(Start: 6 @43511 has 126 MA's), (Start: 9 @43550 has 1 MA's), (Start: 12 @43556 has 1 MA's), (17, 43580), (18, 43598), (25, 43730), (28, 43745), (29, 43748), (30, 43751), (36, 43868), (37, 43886), (67, 44099), (98, 44315), (100, 44327), (102, 44333), (107, 44369), (113, 44417), (123, 44465),

Gene: Bazzle_61 Start: 43811, Stop: 44743, Start Num: 10

Candidate Starts for Bazzle_61:

(Start: 10 @43811 has 44 MA's), (30, 44009), (56, 44306), (65, 44345), (67, 44357), (81, 44420), (84, 44462), (85, 44468), (86, 44480), (96, 44567), (97, 44570), (101, 44588), (106, 44621), (109, 44639), (110, 44651), (113, 44675), (121, 44717),

Gene: Beelzebub_70 Start: 37655, Stop: 38608, Start Num: 11

Candidate Starts for Beelzebub_70:

(3, 37487), (Start: 11 @37655 has 16 MA's), (29, 37853), (34, 37946), (38, 37994), (39, 38024), (46, 38075), (52, 38108), (58, 38147), (73, 38237), (78, 38270), (79, 38273), (84, 38321), (86, 38339), (87, 38360), (96, 38426), (99, 38438), (115, 38546),

Gene: Bench_70 Start: 44210, Stop: 45178, Start Num: 6

Candidate Starts for Bench_70:

(Start: 6 @44210 has 126 MA's), (Start: 9 @44249 has 1 MA's), (Start: 12 @44255 has 1 MA's), (17, 44279), (18, 44297), (25, 44429), (28, 44444), (29, 44447), (30, 44450), (36, 44567), (37, 44585), (67, 44798), (98, 45014), (100, 45026), (102, 45032), (107, 45068), (113, 45116), (123, 45164),

Gene: BigBubba_67 Start: 43919, Stop: 44887, Start Num: 6

Candidate Starts for BigBubba_67:

(Start: 6 @43919 has 126 MA's), (Start: 9 @43958 has 1 MA's), (Start: 12 @43964 has 1 MA's), (17, 43988), (18, 44006), (25, 44138), (28, 44153), (29, 44156), (30, 44159), (36, 44276), (37, 44294), (67, 44507), (98, 44723), (100, 44735), (102, 44741), (107, 44777), (113, 44825), (123, 44873),

Gene: BigCheese_61 Start: 43496, Stop: 44428, Start Num: 10

Candidate Starts for BigCheese_61:

(Start: 10 @43496 has 44 MA's), (30, 43694), (56, 43991), (65, 44030), (67, 44042), (69, 44048), (81, 44105), (84, 44147), (85, 44153), (96, 44252), (97, 44255), (101, 44273), (106, 44306), (107, 44312), (109, 44324), (113, 44360), (121, 44402),

Gene: BilboSwaggins_66 Start: 44548, Stop: 45516, Start Num: 6

Candidate Starts for BilboSwaggins_66:

(Start: 6 @44548 has 126 MA's), (Start: 9 @44587 has 1 MA's), (Start: 12 @44593 has 1 MA's), (17, 44617), (18, 44635), (25, 44767), (28, 44782), (29, 44785), (30, 44788), (36, 44905), (37, 44923), (67, 45136), (98, 45352), (100, 45364), (102, 45370), (107, 45406), (113, 45454), (123, 45502),

Gene: Blackbeetle_66 Start: 36700, Stop: 37653, Start Num: 11

Candidate Starts for Blackbeetle_66:

(Start: 11 @36700 has 16 MA's), (29, 36898), (34, 36991), (38, 37039), (39, 37069), (46, 37120), (52, 37153), (58, 37192), (73, 37282), (78, 37315), (79, 37318), (84, 37366), (86, 37384), (87, 37405), (96, 37471), (99, 37483), (115, 37591),

Gene: BobsGarage_61 Start: 43496, Stop: 44428, Start Num: 10

Candidate Starts for BobsGarage_61:

(Start: 10 @43496 has 44 MA's), (30, 43694), (56, 43991), (65, 44030), (67, 44042), (69, 44048), (81, 44105), (84, 44147), (85, 44153), (96, 44252), (97, 44255), (101, 44273), (106, 44306), (107, 44312), (109, 44324), (113, 44360), (121, 44402),

Gene: Bongo_56 Start: 39492, Stop: 40352, Start Num: 19

Candidate Starts for Bongo_56:

(Start: 19 @39492 has 14 MA's), (Start: 26 @39606 has 5 MA's), (53, 39864), (56, 39900), (60, 39918), (62, 39924), (64, 39930), (68, 39951), (81, 40008), (84, 40047), (85, 40053), (89, 40104), (103, 40200), (110, 40251), (112, 40266), (124, 40341), (125, 40344),

Gene: BrainDrainer_59 Start: 42362, Stop: 43294, Start Num: 10

Candidate Starts for BrainDrainer_59:

(Start: 10 @42362 has 44 MA's), (30, 42560), (52, 42827), (56, 42857), (57, 42863), (61, 42878), (67, 42908), (69, 42914), (79, 42965), (80, 42968), (81, 42971), (84, 43013), (85, 43019), (86, 43031), (97, 43121), (101, 43139), (106, 43172), (107, 43178), (109, 43190), (113, 43226), (121, 43268),

Gene: Breezona_61 Start: 43496, Stop: 44428, Start Num: 10

Candidate Starts for Breezona_61:

(Start: 10 @43496 has 44 MA's), (30, 43694), (56, 43991), (65, 44030), (67, 44042), (69, 44048), (81, 44105), (84, 44147), (85, 44153), (96, 44252), (97, 44255), (101, 44273), (106, 44306), (107, 44312), (109, 44324), (113, 44360), (121, 44402),

Gene: Bricole_56 Start: 39474, Stop: 40334, Start Num: 19

Candidate Starts for Bricole_56:

(Start: 19 @39474 has 14 MA's), (Start: 26 @39588 has 5 MA's), (53, 39846), (56, 39882), (60, 39900), (62, 39906), (64, 39912), (68, 39933), (81, 39990), (84, 40029), (85, 40035), (89, 40086), (103, 40182), (110, 40233), (112, 40248), (124, 40323), (125, 40326),

Gene: Bruin_64 Start: 43083, Stop: 44051, Start Num: 6

Candidate Starts for Bruin_64:

(Start: 6 @43083 has 126 MA's), (Start: 9 @43122 has 1 MA's), (Start: 12 @43128 has 1 MA's), (17, 43152), (18, 43170), (25, 43302), (28, 43317), (29, 43320), (30, 43323), (36, 43440), (37, 43458), (67, 43671), (98, 43887), (100, 43899), (102, 43905), (107, 43941), (113, 43989), (123, 44037),

Gene: Buck_68 Start: 44791, Stop: 45759, Start Num: 6

Candidate Starts for Buck_68:

(Start: 6 @44791 has 126 MA's), (Start: 9 @44830 has 1 MA's), (Start: 12 @44836 has 1 MA's), (17, 44860), (18, 44878), (25, 45010), (28, 45025), (29, 45028), (30, 45031), (36, 45148), (37, 45166), (67, 45379), (98, 45595), (100, 45607), (102, 45613), (107, 45649), (113, 45697), (123, 45745),

Gene: BugsBunny_67 Start: 44618, Stop: 45586, Start Num: 6

Candidate Starts for BugsBunny_67:

(Start: 6 @44618 has 126 MA's), (Start: 9 @44657 has 1 MA's), (Start: 12 @44663 has 1 MA's), (17, 44687), (18, 44705), (25, 44837), (28, 44852), (29, 44855), (30, 44858), (36, 44975), (37, 44993), (67, 45206), (98, 45422), (100, 45434), (102, 45440), (107, 45476), (113, 45524), (123, 45572),

Gene: Cactus_70 Start: 43564, Stop: 44532, Start Num: 6

Candidate Starts for Cactus_70:

(Start: 6 @43564 has 126 MA's), (Start: 9 @43603 has 1 MA's), (Start: 12 @43609 has 1 MA's), (17, 43633), (18, 43651), (25, 43783), (28, 43798), (29, 43801), (30, 43804), (36, 43921), (37, 43939), (67, 44152), (98, 44368), (100, 44380), (102, 44386), (107, 44422), (113, 44470), (123, 44518),

Gene: Calm_60 Start: 41867, Stop: 42850, Start Num: 6

Candidate Starts for Calm_60:

(Start: 6 @41867 has 126 MA's), (Start: 10 @41909 has 44 MA's), (15, 41930), (30, 42116), (56, 42413), (57, 42419), (63, 42440), (65, 42452), (67, 42464), (78, 42518), (80, 42524), (84, 42569), (85, 42575), (86, 42587), (96, 42674), (97, 42677), (98, 42680), (101, 42695), (106, 42728), (108, 42740), (109, 42746), (113, 42782), (118, 42815), (121, 42824),

Gene: Caprice_61 Start: 37014, Stop: 37967, Start Num: 11

Candidate Starts for Caprice_61:

(Start: 11 @37014 has 16 MA's), (29, 37212), (34, 37305), (38, 37353), (39, 37383), (46, 37434), (52, 37467), (58, 37506), (73, 37596), (78, 37629), (79, 37632), (84, 37680), (86, 37698), (87, 37719), (96, 37785), (99, 37797), (115, 37905),

Gene: Chaser_57 Start: 42134, Stop: 43066, Start Num: 10

Candidate Starts for Chaser_57:

(Start: 10 @42134 has 44 MA's), (30, 42332), (52, 42599), (56, 42629), (57, 42635), (61, 42650), (67, 42680), (69, 42686), (80, 42740), (81, 42743), (84, 42785), (85, 42791), (86, 42803), (97, 42893), (101, 42911), (106, 42944), (107, 42950), (109, 42962), (113, 42998), (121, 43040),

Gene: ChosenOne_67 Start: 43567, Stop: 44535, Start Num: 6

Candidate Starts for ChosenOne_67:

(Start: 6 @43567 has 126 MA's), (Start: 9 @43606 has 1 MA's), (Start: 12 @43612 has 1 MA's), (17, 43636), (18, 43654), (25, 43786), (28, 43801), (29, 43804), (30, 43807), (36, 43924), (37, 43942), (67, 44155), (98, 44371), (100, 44383), (102, 44389), (107, 44425), (113, 44473), (123, 44521),

Gene: ChotaBhai_67 Start: 43879, Stop: 44847, Start Num: 6

Candidate Starts for ChotaBhai_67:

(Start: 6 @43879 has 126 MA's), (Start: 9 @43918 has 1 MA's), (Start: 12 @43924 has 1 MA's), (17, 43948), (18, 43966), (25, 44098), (28, 44113), (29, 44116), (30, 44119), (36, 44236), (37, 44254), (67, 44467), (98, 44683), (100, 44695), (102, 44701), (107, 44737), (113, 44785), (123, 44833),

Gene: CicholasNage_58 Start: 41483, Stop: 42415, Start Num: 10

Candidate Starts for CicholasNage_58:

(Start: 10 @41483 has 44 MA's), (30, 41681), (56, 41978), (57, 41984), (63, 42005), (65, 42017), (67, 42029), (78, 42083), (80, 42089), (84, 42134), (85, 42140), (86, 42152), (96, 42239), (97, 42242), (98, 42245), (101, 42260), (109, 42311), (113, 42347), (121, 42389),

Gene: Cjw1_67 Start: 45264, Stop: 46232, Start Num: 6

Candidate Starts for Cjw1_67:

(Start: 6 @45264 has 126 MA's), (Start: 9 @45303 has 1 MA's), (Start: 12 @45309 has 1 MA's), (17, 45333), (18, 45351), (25, 45483), (28, 45498), (29, 45501), (30, 45504), (36, 45621), (37, 45639), (67, 45852), (98, 46068), (100, 46080), (102, 46086), (107, 46122), (113, 46170), (123, 46218),

Gene: Clarkson_67 Start: 37383, Stop: 38336, Start Num: 11

Candidate Starts for Clarkson_67:

(Start: 11 @37383 has 16 MA's), (29, 37581), (34, 37674), (38, 37722), (39, 37752), (46, 37803), (52, 37836), (58, 37875), (73, 37965), (78, 37998), (79, 38001), (84, 38049), (86, 38067), (87, 38088), (96, 38154), (99, 38166), (115, 38274),

Gene: Claus_61 Start: 43577, Stop: 44509, Start Num: 10

Candidate Starts for Claus_61:

(Start: 10 @43577 has 44 MA's), (30, 43775), (56, 44072), (65, 44111), (67, 44123), (69, 44129), (80, 44183), (81, 44186), (84, 44228), (86, 44246), (87, 44267), (96, 44333), (97, 44336), (101, 44354), (109, 44405), (110, 44417), (113, 44441), (121, 44483),

Gene: Command613_69 Start: 44603, Stop: 45571, Start Num: 6

Candidate Starts for Command613_69:

(Start: 6 @44603 has 126 MA's), (Start: 9 @44642 has 1 MA's), (Start: 12 @44648 has 1 MA's), (17, 44672), (18, 44690), (25, 44822), (28, 44837), (29, 44840), (30, 44843), (36, 44960), (37, 44978), (67, 45191), (98, 45407), (100, 45419), (102, 45425), (107, 45461), (113, 45509), (123, 45557),

Gene: Contagion_63 Start: 43364, Stop: 44332, Start Num: 6

Candidate Starts for Contagion_63:

(Start: 6 @43364 has 126 MA's), (Start: 9 @43403 has 1 MA's), (Start: 12 @43409 has 1 MA's), (17, 43433), (18, 43451), (25, 43583), (28, 43598), (29, 43601), (30, 43604), (36, 43721), (37, 43739), (67, 43952), (98, 44168), (100, 44180), (102, 44186), (107, 44222), (113, 44270), (123, 44318),

Gene: Cookies_64 Start: 43733, Stop: 44701, Start Num: 6

Candidate Starts for Cookies_64:

(Start: 6 @43733 has 126 MA's), (Start: 9 @43772 has 1 MA's), (Start: 12 @43778 has 1 MA's), (17, 43802), (18, 43820), (25, 43952), (28, 43967), (29, 43970), (30, 43973), (36, 44090), (37, 44108), (67, 44321), (98, 44537), (100, 44549), (102, 44555), (107, 44591), (113, 44639), (123, 44687),

Gene: Corazon_64 Start: 37577, Stop: 38530, Start Num: 11

Candidate Starts for Corazon_64:

(Start: 11 @37577 has 16 MA's), (29, 37775), (34, 37868), (38, 37916), (39, 37946), (46, 37997), (52, 38030), (58, 38069), (73, 38159), (78, 38192), (79, 38195), (84, 38243), (86, 38261), (87, 38282), (96, 38348), (99, 38360), (115, 38468),

Gene: Cosmo_68 Start: 44692, Stop: 45597, Start Num: 16

Candidate Starts for Cosmo_68:

(Start: 16 @44692 has 6 MA's), (25, 44845), (27, 44854), (28, 44860), (32, 44890), (33, 44902), (36, 44953), (45, 45061), (49, 45082), (51, 45097), (57, 45145), (71, 45211), (74, 45220), (83, 45277), (103, 45445), (105, 45463), (114, 45529), (116, 45535), (117, 45550), (124, 45586),

Gene: Crossroads_61 Start: 43574, Stop: 44506, Start Num: 10

Candidate Starts for Crossroads_61:

(Start: 10 @43574 has 44 MA's), (30, 43772), (56, 44069), (65, 44108), (67, 44120), (69, 44126), (81, 44183), (84, 44225), (85, 44231), (96, 44330), (97, 44333), (101, 44351), (106, 44384), (107, 44390), (109, 44402), (113, 44438), (121, 44480),

Gene: CrystalP_66 Start: 44548, Stop: 45516, Start Num: 6

Candidate Starts for CrystalP_66:

(Start: 6 @44548 has 126 MA's), (Start: 9 @44587 has 1 MA's), (Start: 12 @44593 has 1 MA's), (17, 44617), (18, 44635), (25, 44767), (28, 44782), (29, 44785), (30, 44788), (36, 44905), (37, 44923), (67, 45136), (98, 45352), (100, 45364), (102, 45370), (107, 45406), (113, 45454), (123, 45502),

Gene: Czyszczone1_68 Start: 44073, Stop: 45041, Start Num: 6

Candidate Starts for Czyszczone1_68:

(Start: 6 @44073 has 126 MA's), (Start: 9 @44112 has 1 MA's), (Start: 12 @44118 has 1 MA's), (17, 44142), (18, 44160), (25, 44292), (28, 44307), (29, 44310), (30, 44313), (36, 44430), (37, 44448), (67, 44661), (98, 44877), (100, 44889), (102, 44895), (107, 44931), (113, 44979), (123, 45027),

Gene: DHan_62 Start: 43477, Stop: 44409, Start Num: 10

Candidate Starts for DHan_62:

(Start: 10 @43477 has 44 MA's), (30, 43675), (56, 43972), (65, 44011), (67, 44023), (80, 44083), (81, 44086), (84, 44128), (86, 44146), (87, 44167), (96, 44233), (97, 44236), (101, 44254), (109, 44305), (110, 44317), (113, 44341), (121, 44383),

Gene: Daikon_69 Start: 44691, Stop: 45659, Start Num: 6

Candidate Starts for Daikon_69:

(Start: 6 @44691 has 126 MA's), (Start: 9 @44730 has 1 MA's), (Start: 12 @44736 has 1 MA's), (17, 44760), (18, 44778), (25, 44910), (28, 44925), (29, 44928), (30, 44931), (36, 45048), (37, 45066), (67, 45279), (98, 45495), (100, 45507), (102, 45513), (107, 45549), (113, 45597), (123, 45645),

Gene: DanBing_61 Start: 43446, Stop: 44378, Start Num: 10

Candidate Starts for DanBing_61:

(Start: 10 @43446 has 44 MA's), (30, 43644), (56, 43941), (65, 43980), (67, 43992), (80, 44052), (81, 44055), (84, 44097), (86, 44115), (87, 44136), (96, 44202), (97, 44205), (101, 44223), (109, 44274), (110, 44286), (113, 44310), (121, 44352),

Gene: Diminimus_57 Start: 39487, Stop: 40347, Start Num: 19

Candidate Starts for Diminimus_57:

(Start: 19 @39487 has 14 MA's), (Start: 26 @39601 has 5 MA's), (53, 39859), (56, 39895), (60, 39913), (62, 39919), (64, 39925), (68, 39946), (81, 40003), (84, 40042), (85, 40048), (89, 40099), (103, 40195), (110, 40246), (112, 40261), (124, 40336), (125, 40339),

Gene: DirkDirk_56 Start: 41325, Stop: 42257, Start Num: 10

Candidate Starts for DirkDirk_56:

(Start: 10 @41325 has 44 MA's), (30, 41523), (56, 41820), (57, 41826), (63, 41847), (65, 41859), (67, 41871), (78, 41925), (80, 41931), (84, 41976), (85, 41982), (86, 41994), (96, 42081), (97, 42084), (98, 42087), (101, 42102), (106, 42135), (108, 42147), (109, 42153), (113, 42189), (118, 42222), (121, 42231),

Gene: DoctorDiddles_66 Start: 43923, Stop: 44891, Start Num: 6

Candidate Starts for DoctorDiddles_66:

(Start: 6 @43923 has 126 MA's), (Start: 9 @43962 has 1 MA's), (Start: 12 @43968 has 1 MA's), (17, 43992), (18, 44010), (25, 44142), (28, 44157), (29, 44160), (30, 44163), (36, 44280), (37, 44298), (67, 44511), (98, 44727), (100, 44739), (102, 44745), (107, 44781), (113, 44829), (123, 44877),

Gene: Douge_59 Start: 42140, Stop: 43072, Start Num: 10

Candidate Starts for Douge_59:

(Start: 10 @42140 has 44 MA's), (30, 42338), (52, 42605), (56, 42635), (57, 42641), (61, 42656), (67, 42686), (69, 42692), (80, 42746), (81, 42749), (84, 42791), (85, 42797), (86, 42809), (97, 42899), (101, 42917), (106, 42950), (107, 42956), (109, 42968), (113, 43004), (121, 43046),

Gene: Douzhi_59 Start: 42190, Stop: 43122, Start Num: 10

Candidate Starts for Douzhi_59:

(Start: 10 @42190 has 44 MA's), (30, 42388), (52, 42655), (56, 42685), (57, 42691), (61, 42706), (67, 42736), (69, 42742), (80, 42796), (81, 42799), (84, 42841), (85, 42847), (86, 42859), (97, 42949), (101, 42967), (106, 43000), (107, 43006), (109, 43018), (113, 43054), (121, 43096),

Gene: DrDrey_67 Start: 44989, Stop: 45957, Start Num: 6

Candidate Starts for DrDrey_67:

(Start: 6 @44989 has 126 MA's), (Start: 9 @45028 has 1 MA's), (Start: 12 @45034 has 1 MA's), (17, 45058), (18, 45076), (25, 45208), (28, 45223), (29, 45226), (30, 45229), (36, 45346), (37, 45364), (67, 45577), (98, 45793), (100, 45805), (102, 45811), (107, 45847), (113, 45895), (123, 45943),

Gene: DrSeegs_61 Start: 43496, Stop: 44428, Start Num: 10

Candidate Starts for DrSeegs_61:

(Start: 10 @43496 has 44 MA's), (30, 43694), (56, 43991), (65, 44030), (67, 44042), (69, 44048), (81, 44105), (84, 44147), (85, 44153), (96, 44252), (97, 44255), (101, 44273), (106, 44306), (107, 44312), (109, 44324), (113, 44360), (121, 44402),

Gene: Dulcita_57 Start: 39488, Stop: 40348, Start Num: 19

Candidate Starts for Dulcita_57:

(Start: 19 @39488 has 14 MA's), (Start: 26 @39602 has 5 MA's), (53, 39860), (56, 39896), (60, 39914), (62, 39920), (64, 39926), (68, 39947), (81, 40004), (84, 40043), (85, 40049), (89, 40100), (103, 40196), (110, 40247), (112, 40262), (124, 40337), (125, 40340),

Gene: Dumbo_67 Start: 43472, Stop: 44440, Start Num: 6

Candidate Starts for Dumbo_67:

(Start: 6 @43472 has 126 MA's), (Start: 9 @43511 has 1 MA's), (Start: 12 @43517 has 1 MA's), (17, 43541), (18, 43559), (25, 43691), (28, 43706), (29, 43709), (30, 43712), (36, 43829), (37, 43847), (67, 44060), (98, 44276), (100, 44288), (102, 44294), (107, 44330), (113, 44378), (123, 44426),

Gene: Dusk_64 Start: 43769, Stop: 44737, Start Num: 6

Candidate Starts for Dusk_64:

(Start: 6 @43769 has 126 MA's), (Start: 9 @43808 has 1 MA's), (Start: 12 @43814 has 1 MA's), (17, 43838), (18, 43856), (25, 43988), (28, 44003), (29, 44006), (30, 44009), (36, 44126), (37, 44144), (67,

44357), (98, 44573), (100, 44585), (102, 44591), (107, 44627), (113, 44675), (123, 44723),

Gene: DyoEdafos_61 Start: 42419, Stop: 43351, Start Num: 12

Candidate Starts for DyoEdafos_61:

(Start: 12 @42419 has 1 MA's), (30, 42617), (52, 42884), (56, 42914), (57, 42920), (67, 42965), (69, 42971), (80, 43025), (81, 43028), (84, 43070), (85, 43076), (86, 43088), (97, 43178), (101, 43196), (106, 43229), (107, 43235), (109, 43247), (113, 43283), (121, 43325),

Gene: Easy2Say_68 Start: 45010, Stop: 45978, Start Num: 6

Candidate Starts for Easy2Say_68:

(Start: 6 @45010 has 126 MA's), (Start: 9 @45049 has 1 MA's), (Start: 12 @45055 has 1 MA's), (17, 45079), (18, 45097), (25, 45229), (28, 45244), (29, 45247), (30, 45250), (36, 45367), (37, 45385), (67, 45598), (98, 45814), (100, 45826), (102, 45832), (107, 45868), (113, 45916), (123, 45964),

Gene: Elite2014_66 Start: 43566, Stop: 44534, Start Num: 6

Candidate Starts for Elite2014_66:

(Start: 6 @43566 has 126 MA's), (Start: 9 @43605 has 1 MA's), (Start: 12 @43611 has 1 MA's), (17, 43635), (18, 43653), (25, 43785), (28, 43800), (29, 43803), (30, 43806), (36, 43923), (37, 43941), (67, 44154), (98, 44370), (100, 44382), (102, 44388), (107, 44424), (113, 44472), (123, 44520),

Gene: Elph10_67 Start: 43571, Stop: 44539, Start Num: 6

Candidate Starts for Elph10_67:

(Start: 6 @43571 has 126 MA's), (Start: 9 @43610 has 1 MA's), (Start: 12 @43616 has 1 MA's), (17, 43640), (18, 43658), (25, 43790), (28, 43805), (29, 43808), (30, 43811), (36, 43928), (37, 43946), (67, 44159), (98, 44375), (100, 44387), (102, 44393), (107, 44429), (113, 44477), (123, 44525),

Gene: Emmina_67 Start: 43473, Stop: 44441, Start Num: 6

Candidate Starts for Emmina_67:

(Start: 6 @43473 has 126 MA's), (Start: 9 @43512 has 1 MA's), (Start: 12 @43518 has 1 MA's), (17, 43542), (18, 43560), (25, 43692), (28, 43707), (29, 43710), (30, 43713), (36, 43830), (37, 43848), (67, 44061), (98, 44277), (100, 44289), (102, 44295), (107, 44331), (113, 44379), (123, 44427),

Gene: EniyanLRS_64 Start: 44431, Stop: 45336, Start Num: 16

Candidate Starts for EniyanLRS_64:

(7, 44380), (8, 44392), (14, 44416), (Start: 16 @44431 has 6 MA's), (25, 44584), (27, 44593), (28, 44599), (32, 44629), (33, 44641), (36, 44692), (40, 44758), (45, 44800), (47, 44812), (49, 44821), (51, 44836), (57, 44884), (71, 44950), (74, 44959), (83, 45016), (103, 45184), (105, 45202), (114, 45268), (116, 45274), (117, 45289), (124, 45325),

Gene: Estes_64 Start: 41895, Stop: 42641, Start Num: 26

Candidate Starts for Estes_64:

(Start: 26 @41895 has 5 MA's), (59, 42201), (60, 42207), (62, 42213), (68, 42240), (81, 42297), (84, 42336), (85, 42342), (90, 42396), (91, 42399), (103, 42489), (107, 42516), (120, 42603), (124, 42630),

Gene: Eureka_65 Start: 44037, Stop: 45005, Start Num: 6

Candidate Starts for Eureka_65:

(Start: 6 @44037 has 126 MA's), (Start: 9 @44076 has 1 MA's), (Start: 12 @44082 has 1 MA's), (17, 44106), (18, 44124), (25, 44256), (28, 44271), (29, 44274), (30, 44277), (36, 44394), (37, 44412), (67, 44625), (98, 44841), (100, 44853), (102, 44859), (107, 44895), (113, 44943), (123, 44991),

Gene: FairyPath_67 Start: 44682, Stop: 45650, Start Num: 6

Candidate Starts for FairyPath_67:

(Start: 6 @44682 has 126 MA's), (Start: 9 @44721 has 1 MA's), (Start: 12 @44727 has 1 MA's), (17, 44751), (18, 44769), (25, 44901), (28, 44916), (29, 44919), (30, 44922), (36, 45039), (37, 45057), (67, 45270), (98, 45486), (100, 45498), (102, 45504), (107, 45540), (113, 45588), (123, 45636),

Gene: Faith1_61 Start: 43496, Stop: 44428, Start Num: 10

Candidate Starts for Faith1_61:

(Start: 10 @43496 has 44 MA's), (30, 43694), (56, 43991), (65, 44030), (67, 44042), (69, 44048), (81, 44105), (84, 44147), (85, 44153), (96, 44252), (97, 44255), (101, 44273), (106, 44306), (107, 44312), (109, 44324), (113, 44360), (121, 44402),

Gene: FeliMaine_65 Start: 37625, Stop: 38578, Start Num: 11

Candidate Starts for FeliMaine_65:

(Start: 11 @37625 has 16 MA's), (29, 37823), (34, 37916), (38, 37964), (39, 37994), (46, 38045), (52, 38078), (58, 38117), (73, 38207), (78, 38240), (79, 38243), (84, 38291), (86, 38309), (87, 38330), (96, 38396), (99, 38408), (115, 38516),

Gene: Filch_68 Start: 43498, Stop: 44466, Start Num: 6

Candidate Starts for Filch_68:

(Start: 6 @43498 has 126 MA's), (Start: 9 @43537 has 1 MA's), (Start: 12 @43543 has 1 MA's), (17, 43567), (18, 43585), (25, 43717), (28, 43732), (29, 43735), (30, 43738), (36, 43855), (37, 43873), (67, 44086), (98, 44302), (100, 44314), (102, 44320), (107, 44356), (113, 44404), (123, 44452),

Gene: Finemlucis_61 Start: 43817, Stop: 44749, Start Num: 10

Candidate Starts for Finemlucis_61:

(Start: 10 @43817 has 44 MA's), (30, 44015), (56, 44312), (65, 44351), (67, 44363), (69, 44369), (81, 44426), (84, 44468), (85, 44474), (96, 44573), (97, 44576), (101, 44594), (106, 44627), (107, 44633), (109, 44645), (113, 44681), (121, 44723),

Gene: FireRed_71 Start: 45060, Stop: 46028, Start Num: 6

Candidate Starts for FireRed_71:

(Start: 6 @45060 has 126 MA's), (Start: 9 @45099 has 1 MA's), (Start: 12 @45105 has 1 MA's), (17, 45129), (18, 45147), (25, 45279), (28, 45294), (29, 45297), (30, 45300), (36, 45417), (37, 45435), (67, 45648), (98, 45864), (100, 45876), (102, 45882), (107, 45918), (113, 45966), (123, 46014),

Gene: Flypotenuse_63 Start: 43554, Stop: 44522, Start Num: 6

Candidate Starts for Flypotenuse_63:

(Start: 6 @43554 has 126 MA's), (Start: 9 @43593 has 1 MA's), (Start: 12 @43599 has 1 MA's), (17, 43623), (18, 43641), (25, 43773), (28, 43788), (29, 43791), (30, 43794), (36, 43911), (37, 43929), (67, 44142), (98, 44358), (100, 44370), (102, 44376), (107, 44412), (113, 44460), (123, 44508),

Gene: Gabriela_58 Start: 41946, Stop: 42878, Start Num: 10

Candidate Starts for Gabriela_58:

(Start: 10 @41946 has 44 MA's), (30, 42144), (56, 42441), (65, 42480), (67, 42492), (69, 42498), (81, 42555), (84, 42597), (85, 42603), (96, 42702), (97, 42705), (101, 42723), (106, 42756), (107, 42762), (109, 42774), (113, 42810), (121, 42852),

Gene: Gage_69 Start: 44344, Stop: 45312, Start Num: 6

Candidate Starts for Gage_69:

(Start: 6 @44344 has 126 MA's), (Start: 9 @44383 has 1 MA's), (Start: 12 @44389 has 1 MA's), (17, 44413), (18, 44431), (25, 44563), (28, 44578), (29, 44581), (30, 44584), (36, 44701), (37, 44719), (67, 44932), (98, 45148), (100, 45160), (102, 45166), (107, 45202), (113, 45250), (123, 45298),

Gene: Gardann_62 Start: 43532, Stop: 44464, Start Num: 10

Candidate Starts for Gardann_62:

(Start: 10 @43532 has 44 MA's), (30, 43730), (56, 44027), (65, 44066), (67, 44078), (69, 44084), (81, 44141), (84, 44183), (85, 44189), (96, 44288), (97, 44291), (101, 44309), (106, 44342), (107, 44348), (109, 44360), (113, 44396), (121, 44438),

Gene: GardenSalsa_64 Start: 42057, Stop: 42803, Start Num: 26

Candidate Starts for GardenSalsa_64:

(Start: 26 @42057 has 5 MA's), (59, 42363), (60, 42369), (62, 42375), (68, 42402), (81, 42459), (84, 42498), (85, 42504), (90, 42558), (91, 42561), (103, 42651), (107, 42678), (120, 42765), (124, 42792),

Gene: Gator_65 Start: 44400, Stop: 45368, Start Num: 6

Candidate Starts for Gator_65:

(Start: 6 @44400 has 126 MA's), (Start: 9 @44439 has 1 MA's), (Start: 12 @44445 has 1 MA's), (17, 44469), (18, 44487), (25, 44619), (28, 44634), (29, 44637), (30, 44640), (36, 44757), (37, 44775), (67, 44988), (98, 45204), (100, 45216), (102, 45222), (107, 45258), (113, 45306), (123, 45354),

Gene: Gattaca_64 Start: 36804, Stop: 37757, Start Num: 11

Candidate Starts for Gattaca_64:

(Start: 11 @36804 has 16 MA's), (29, 37002), (34, 37095), (38, 37143), (39, 37173), (46, 37224), (52, 37257), (58, 37296), (73, 37386), (78, 37419), (79, 37422), (84, 37470), (86, 37488), (87, 37509), (96, 37575), (99, 37587), (115, 37695),

Gene: Gemini_72 Start: 44861, Stop: 45829, Start Num: 6

Candidate Starts for Gemini_72:

(Start: 6 @44861 has 126 MA's), (Start: 9 @44900 has 1 MA's), (Start: 12 @44906 has 1 MA's), (17, 44930), (18, 44948), (25, 45080), (28, 45095), (29, 45098), (30, 45101), (36, 45218), (37, 45236), (67, 45449), (98, 45665), (100, 45677), (102, 45683), (107, 45719), (113, 45767), (123, 45815),

Gene: GenevaB15_63 Start: 41623, Stop: 42369, Start Num: 26

Candidate Starts for GenevaB15_63:

(Start: 26 @41623 has 5 MA's), (47, 41845), (59, 41929), (60, 41935), (62, 41941), (68, 41968), (81, 42025), (84, 42064), (85, 42070), (90, 42124), (91, 42127), (103, 42217), (107, 42244), (120, 42331), (124, 42358),

Gene: Glaske16_57 Start: 39487, Stop: 40347, Start Num: 19

Candidate Starts for Glaske16_57:

(Start: 19 @39487 has 14 MA's), (Start: 26 @39601 has 5 MA's), (53, 39859), (56, 39895), (60, 39913), (62, 39919), (64, 39925), (68, 39946), (81, 40003), (84, 40042), (85, 40048), (89, 40099), (103, 40195), (110, 40246), (112, 40261), (124, 40336), (125, 40339),

Gene: Glexan_66 Start: 44681, Stop: 45649, Start Num: 6

Candidate Starts for Glexan_66:

(Start: 6 @44681 has 126 MA's), (Start: 9 @44720 has 1 MA's), (Start: 12 @44726 has 1 MA's), (17, 44750), (18, 44768), (25, 44900), (28, 44915), (29, 44918), (30, 44921), (36, 45038), (37, 45056), (67, 45269), (98, 45485), (100, 45497), (102, 45503), (107, 45539), (113, 45587), (123, 45635),

Gene: Goku_65 Start: 43766, Stop: 44734, Start Num: 6

Candidate Starts for Goku_65:

(Start: 6 @43766 has 126 MA's), (Start: 9 @43805 has 1 MA's), (Start: 12 @43811 has 1 MA's), (17, 43835), (18, 43853), (25, 43985), (28, 44000), (29, 44003), (30, 44006), (36, 44123), (37, 44141), (67, 44354), (98, 44570), (100, 44582), (102, 44588), (107, 44624), (113, 44672), (123, 44720),

Gene: GoldenSpark_71 Start: 44344, Stop: 45312, Start Num: 6

Candidate Starts for GoldenSpark_71:

(Start: 6 @44344 has 126 MA's), (Start: 9 @44383 has 1 MA's), (Start: 12 @44389 has 1 MA's), (17, 44413), (18, 44431), (25, 44563), (28, 44578), (29, 44581), (30, 44584), (36, 44701), (37, 44719), (67, 44932), (98, 45148), (100, 45160), (102, 45166), (107, 45202), (113, 45250), (123, 45298),

Gene: Goldilocks_70 Start: 43845, Stop: 44813, Start Num: 6

Candidate Starts for Goldilocks_70:

(Start: 6 @43845 has 126 MA's), (Start: 9 @43884 has 1 MA's), (Start: 12 @43890 has 1 MA's), (17, 43914), (18, 43932), (25, 44064), (28, 44079), (29, 44082), (30, 44085), (36, 44202), (37, 44220), (67, 44433), (98, 44649), (100, 44661), (102, 44667), (107, 44703), (113, 44751), (123, 44799),

Gene: GooberAzure_70 Start: 44344, Stop: 45312, Start Num: 6

Candidate Starts for GooberAzure_70:

(Start: 6 @44344 has 126 MA's), (Start: 9 @44383 has 1 MA's), (Start: 12 @44389 has 1 MA's), (17, 44413), (18, 44431), (25, 44563), (28, 44578), (29, 44581), (30, 44584), (36, 44701), (37, 44719), (67, 44932), (98, 45148), (100, 45160), (102, 45166), (107, 45202), (113, 45250), (123, 45298),

Gene: GuuelaD_60 Start: 43611, Stop: 44543, Start Num: 10

Candidate Starts for GuuelaD_60:

(Start: 10 @43611 has 44 MA's), (30, 43809), (56, 44106), (65, 44145), (67, 44157), (69, 44163), (81, 44220), (84, 44262), (85, 44268), (96, 44367), (97, 44370), (101, 44388), (106, 44421), (107, 44427), (109, 44439), (113, 44475), (121, 44517),

Gene: Hafay_62 Start: 43600, Stop: 44532, Start Num: 10

Candidate Starts for Hafay_62:

(Start: 10 @43600 has 44 MA's), (30, 43798), (56, 44095), (65, 44134), (67, 44146), (69, 44152), (81, 44209), (84, 44251), (85, 44257), (96, 44356), (97, 44359), (101, 44377), (106, 44410), (107, 44416), (109, 44428), (113, 44464), (121, 44506),

Gene: Halena_57 Start: 41362, Stop: 42294, Start Num: 10

Candidate Starts for Halena_57:

(Start: 10 @41362 has 44 MA's), (30, 41560), (56, 41857), (57, 41863), (63, 41884), (65, 41896), (67, 41908), (78, 41962), (80, 41968), (84, 42013), (85, 42019), (86, 42031), (96, 42118), (97, 42121), (98, 42124), (101, 42139), (106, 42172), (108, 42184), (109, 42190), (113, 42226), (118, 42259), (121, 42268),

Gene: HanKaySha_67 Start: 43651, Stop: 44619, Start Num: 6

Candidate Starts for HanKaySha_67:

(Start: 6 @43651 has 126 MA's), (Start: 9 @43690 has 1 MA's), (Start: 12 @43696 has 1 MA's), (17, 43720), (18, 43738), (25, 43870), (28, 43885), (29, 43888), (30, 43891), (36, 44008), (37, 44026), (67, 44239), (98, 44455), (100, 44467), (102, 44473), (107, 44509), (113, 44557), (123, 44605),

Gene: Harella_67 Start: 45197, Stop: 46165, Start Num: 6

Candidate Starts for Harella_67:

(Start: 6 @45197 has 126 MA's), (Start: 9 @45236 has 1 MA's), (Start: 12 @45242 has 1 MA's), (17, 45266), (18, 45284), (25, 45416), (28, 45431), (29, 45434), (30, 45437), (36, 45554), (37, 45572), (67, 45785), (98, 46001), (100, 46013), (102, 46019), (107, 46055), (113, 46103), (123, 46151),

Gene: Henry_65 Start: 43988, Stop: 44956, Start Num: 6

Candidate Starts for Henry_65:

(Start: 6 @43988 has 126 MA's), (Start: 9 @44027 has 1 MA's), (Start: 12 @44033 has 1 MA's), (17, 44057), (18, 44075), (25, 44207), (28, 44222), (29, 44225), (30, 44228), (36, 44345), (37, 44363), (67, 44576), (98, 44792), (100, 44804), (102, 44810), (107, 44846), (113, 44894), (123, 44942),

Gene: Highbury_66 Start: 43639, Stop: 44607, Start Num: 6

Candidate Starts for Highbury_66:

(Start: 6 @43639 has 126 MA's), (Start: 9 @43678 has 1 MA's), (Start: 12 @43684 has 1 MA's), (17, 43708), (18, 43726), (25, 43858), (28, 43873), (29, 43876), (30, 43879), (36, 43996), (37, 44014), (67, 44227), (98, 44443), (100, 44455), (102, 44461), (107, 44497), (113, 44545), (123, 44593),

Gene: Holt_72 Start: 44758, Stop: 45726, Start Num: 6

Candidate Starts for Holt_72:

(Start: 6 @44758 has 126 MA's), (Start: 9 @44797 has 1 MA's), (Start: 12 @44803 has 1 MA's), (17, 44827), (18, 44845), (25, 44977), (28, 44992), (29, 44995), (30, 44998), (36, 45115), (37, 45133), (67, 45346), (98, 45562), (100, 45574), (102, 45580), (107, 45616), (113, 45664), (123, 45712),

Gene: Hoonter_70 Start: 44344, Stop: 45312, Start Num: 6

Candidate Starts for Hoonter_70:

(Start: 6 @44344 has 126 MA's), (Start: 9 @44383 has 1 MA's), (Start: 12 @44389 has 1 MA's), (17, 44413), (18, 44431), (25, 44563), (28, 44578), (29, 44581), (30, 44584), (36, 44701), (37, 44719), (67, 44932), (98, 45148), (100, 45160), (102, 45166), (107, 45202), (113, 45250), (123, 45298),

Gene: Hokey_67 Start: 44183, Stop: 45151, Start Num: 6

Candidate Starts for Hokey_67:

(Start: 6 @44183 has 126 MA's), (Start: 9 @44222 has 1 MA's), (Start: 12 @44228 has 1 MA's), (17, 44252), (18, 44270), (25, 44402), (28, 44417), (29, 44420), (30, 44423), (36, 44540), (37, 44558), (67, 44771), (98, 44987), (100, 44999), (102, 45005), (107, 45041), (113, 45089), (123, 45137),

Gene: HufflyPuff_70 Start: 45016, Stop: 45984, Start Num: 6

Candidate Starts for HufflyPuff_70:

(Start: 6 @45016 has 126 MA's), (Start: 9 @45055 has 1 MA's), (Start: 12 @45061 has 1 MA's), (17, 45085), (18, 45103), (25, 45235), (28, 45250), (29, 45253), (30, 45256), (36, 45373), (37, 45391), (67, 45604), (98, 45820), (100, 45832), (102, 45838), (107, 45874), (113, 45922), (123, 45970),

Gene: Huphleuff_68 Start: 37188, Stop: 38141, Start Num: 11

Candidate Starts for Huphleuff_68:

(Start: 11 @37188 has 16 MA's), (29, 37386), (34, 37479), (38, 37527), (39, 37557), (46, 37608), (52, 37641), (58, 37680), (73, 37770), (78, 37803), (79, 37806), (84, 37854), (86, 37872), (87, 37893), (96, 37959), (99, 37971), (115, 38079),

Gene: IHOP_65 Start: 44112, Stop: 45080, Start Num: 6

Candidate Starts for IHOP_65:

(Start: 6 @44112 has 126 MA's), (Start: 9 @44151 has 1 MA's), (Start: 12 @44157 has 1 MA's), (17, 44181), (18, 44199), (25, 44331), (28, 44346), (29, 44349), (30, 44352), (36, 44469), (37, 44487), (67, 44700), (98, 44916), (100, 44928), (102, 44934), (107, 44970), (113, 45018), (123, 45066),

Gene: IPhone7_56 Start: 39492, Stop: 40352, Start Num: 19

Candidate Starts for IPhone7_56:

(Start: 19 @39492 has 14 MA's), (Start: 26 @39606 has 5 MA's), (53, 39864), (56, 39900), (60, 39918), (62, 39924), (64, 39930), (68, 39951), (81, 40008), (84, 40047), (85, 40053), (89, 40104), (103, 40200), (110, 40251), (112, 40266), (124, 40341), (125, 40344),

Gene: Icee_68 Start: 44011, Stop: 44979, Start Num: 6

Candidate Starts for Icee_68:

(Start: 6 @44011 has 126 MA's), (Start: 9 @44050 has 1 MA's), (Start: 12 @44056 has 1 MA's), (17, 44080), (18, 44098), (25, 44230), (28, 44245), (29, 44248), (30, 44251), (36, 44368), (37, 44386), (67,

44599), (98, 44815), (100, 44827), (102, 44833), (107, 44869), (113, 44917), (123, 44965),

Gene: Inca_64 Start: 42676, Stop: 43605, Start Num: 9

Candidate Starts for Inca_64:

(Start: 6 @42637 has 126 MA's), (Start: 9 @42676 has 1 MA's), (Start: 12 @42682 has 1 MA's), (17, 42706), (18, 42724), (25, 42856), (28, 42871), (29, 42874), (30, 42877), (36, 42994), (37, 43012), (67, 43225), (98, 43441), (100, 43453), (102, 43459), (107, 43495), (113, 43543), (123, 43591),

Gene: Itos_60 Start: 42402, Stop: 43334, Start Num: 10

Candidate Starts for Itos_60:

(Start: 10 @42402 has 44 MA's), (30, 42600), (56, 42897), (65, 42936), (67, 42948), (69, 42954), (81, 43011), (84, 43053), (85, 43059), (96, 43158), (97, 43161), (101, 43179), (106, 43212), (107, 43218), (109, 43230), (113, 43266), (121, 43308),

Gene: JeTaime_67 Start: 44835, Stop: 45803, Start Num: 6

Candidate Starts for JeTaime_67:

(Start: 6 @44835 has 126 MA's), (Start: 9 @44874 has 1 MA's), (Start: 12 @44880 has 1 MA's), (17, 44904), (18, 44922), (25, 45054), (28, 45069), (29, 45072), (30, 45075), (36, 45192), (37, 45210), (67, 45423), (98, 45639), (100, 45651), (102, 45657), (107, 45693), (113, 45741), (123, 45789),

Gene: JoeDirt_58 Start: 41762, Stop: 42694, Start Num: 10

Candidate Starts for JoeDirt_58:

(1, 41522), (2, 41525), (4, 41597), (7, 41735), (Start: 10 @41762 has 44 MA's), (30, 41960), (56, 42257), (63, 42284), (65, 42296), (67, 42308), (78, 42362), (80, 42368), (84, 42413), (85, 42419), (86, 42431), (96, 42518), (97, 42521), (98, 42524), (101, 42539), (109, 42590), (113, 42626), (121, 42668),

Gene: JoieB_67 Start: 37621, Stop: 38574, Start Num: 11

Candidate Starts for JoieB_67:

(Start: 11 @37621 has 16 MA's), (29, 37819), (34, 37912), (38, 37960), (39, 37990), (46, 38041), (52, 38074), (58, 38113), (73, 38203), (78, 38236), (79, 38239), (84, 38287), (86, 38305), (87, 38326), (96, 38392), (99, 38404), (115, 38512),

Gene: Kahlid_61 Start: 43502, Stop: 44434, Start Num: 10

Candidate Starts for Kahlid_61:

(Start: 10 @43502 has 44 MA's), (30, 43700), (56, 43997), (65, 44036), (67, 44048), (69, 44054), (81, 44111), (84, 44153), (85, 44159), (96, 44258), (97, 44261), (101, 44279), (106, 44312), (107, 44318), (109, 44330), (113, 44366), (121, 44408),

Gene: Kanye_64 Start: 43693, Stop: 44661, Start Num: 6

Candidate Starts for Kanye_64:

(Start: 6 @43693 has 126 MA's), (Start: 9 @43732 has 1 MA's), (Start: 12 @43738 has 1 MA's), (17, 43762), (18, 43780), (25, 43912), (28, 43927), (29, 43930), (30, 43933), (36, 44050), (37, 44068), (67, 44281), (98, 44497), (100, 44509), (102, 44515), (107, 44551), (113, 44599), (123, 44647),

Gene: Kimchi_71 Start: 44347, Stop: 45315, Start Num: 6

Candidate Starts for Kimchi_71:

(Start: 6 @44347 has 126 MA's), (Start: 9 @44386 has 1 MA's), (Start: 12 @44392 has 1 MA's), (17, 44416), (18, 44434), (25, 44566), (28, 44581), (29, 44584), (30, 44587), (36, 44704), (37, 44722), (67, 44935), (98, 45151), (100, 45163), (102, 45169), (107, 45205), (113, 45253), (123, 45301),

Gene: Kostya_67 Start: 44211, Stop: 45179, Start Num: 6

Candidate Starts for Kostya_67:

(Start: 6 @44211 has 126 MA's), (Start: 9 @44250 has 1 MA's), (Start: 12 @44256 has 1 MA's), (17, 44280), (18, 44298), (25, 44430), (28, 44445), (29, 44448), (30, 44451), (36, 44568), (37, 44586), (67, 44799), (98, 45015), (100, 45027), (102, 45033), (107, 45069), (113, 45117), (123, 45165),

Gene: Kudefre_58 Start: 39045, Stop: 39977, Start Num: 13

Candidate Starts for Kudefre_58:

(Start: 12 @39042 has 1 MA's), (Start: 13 @39045 has 7 MA's), (21, 39162), (22, 39183), (23, 39201), (28, 39237), (29, 39240), (35, 39348), (45, 39465), (47, 39477), (54, 39519), (56, 39540), (61, 39561), (66, 39588), (69, 39597), (70, 39612), (72, 39621), (77, 39648), (83, 39699), (84, 39708), (85, 39714), (92, 39771), (93, 39783), (94, 39795), (95, 39807), (96, 39813), (97, 39816), (98, 39819), (105, 39864), (109, 39885), (121, 39963), (122, 39966),

Gene: Kumao_48 Start: 38609, Stop: 39574, Start Num: 6

Candidate Starts for Kumao_48:

(Start: 6 @38609 has 126 MA's), (Start: 9 @38648 has 1 MA's), (Start: 13 @38657 has 7 MA's), (25, 38822), (30, 38843), (39, 39020), (41, 39038), (43, 39056), (44, 39065), (67, 39194), (75, 39230), (79, 39251), (94, 39386), (96, 39404), (104, 39443), (109, 39476), (111, 39491), (113, 39512), (119, 39548), (123, 39560),

Gene: LeBron_58 Start: 41365, Stop: 42297, Start Num: 10

Candidate Starts for LeBron_58:

(Start: 10 @41365 has 44 MA's), (30, 41563), (56, 41860), (57, 41866), (63, 41887), (65, 41899), (67, 41911), (78, 41965), (80, 41971), (84, 42016), (85, 42022), (86, 42034), (96, 42121), (97, 42124), (98, 42127), (101, 42142), (106, 42175), (108, 42187), (109, 42193), (113, 42229), (118, 42262), (121, 42271),

Gene: Lewan_62 Start: 43556, Stop: 44488, Start Num: 10

Candidate Starts for Lewan_62:

(Start: 10 @43556 has 44 MA's), (30, 43754), (56, 44051), (65, 44090), (67, 44102), (69, 44108), (81, 44165), (84, 44207), (85, 44213), (96, 44312), (97, 44315), (101, 44333), (106, 44366), (107, 44372), (109, 44384), (113, 44420), (121, 44462),

Gene: LilDestine_61 Start: 43529, Stop: 44461, Start Num: 10

Candidate Starts for LilDestine_61:

(Start: 10 @43529 has 44 MA's), (30, 43727), (56, 44024), (65, 44063), (67, 44075), (69, 44081), (81, 44138), (84, 44180), (85, 44186), (96, 44285), (97, 44288), (101, 44306), (106, 44339), (107, 44345), (109, 44357), (113, 44393), (121, 44435),

Gene: Lilac_69 Start: 43968, Stop: 44936, Start Num: 6

Candidate Starts for Lilac_69:

(Start: 6 @43968 has 126 MA's), (Start: 9 @44007 has 1 MA's), (Start: 12 @44013 has 1 MA's), (17, 44037), (18, 44055), (25, 44187), (28, 44202), (29, 44205), (30, 44208), (36, 44325), (37, 44343), (67, 44556), (98, 44772), (100, 44784), (102, 44790), (107, 44826), (113, 44874), (123, 44922),

Gene: Lilbit_66 Start: 37384, Stop: 38337, Start Num: 11

Candidate Starts for Lilbit_66:

(Start: 11 @37384 has 16 MA's), (29, 37582), (34, 37675), (38, 37723), (39, 37753), (46, 37804), (52, 37837), (58, 37876), (73, 37966), (78, 37999), (79, 38002), (84, 38050), (86, 38068), (87, 38089), (96, 38155), (99, 38167), (115, 38275),

Gene: LilhomieP_55 Start: 39492, Stop: 40352, Start Num: 19

Candidate Starts for LilhomieP_55:

(Start: 19 @39492 has 14 MA's), (Start: 26 @39606 has 5 MA's), (53, 39864), (56, 39900), (60, 39918), (62, 39924), (64, 39930), (68, 39951), (81, 40008), (84, 40047), (85, 40053), (89, 40104), (103, 40200), (110, 40251), (112, 40266), (124, 40341), (125, 40344),

Gene: Lilizi_68 Start: 43681, Stop: 44649, Start Num: 6

Candidate Starts for Lilizi_68:

(Start: 6 @43681 has 126 MA's), (Start: 9 @43720 has 1 MA's), (Start: 12 @43726 has 1 MA's), (17, 43750), (18, 43768), (25, 43900), (28, 43915), (29, 43918), (30, 43921), (36, 44038), (37, 44056), (67, 44269), (98, 44485), (100, 44497), (102, 44503), (107, 44539), (113, 44587), (123, 44635),

Gene: Lilpickle_66 Start: 43566, Stop: 44534, Start Num: 6

Candidate Starts for Lilpickle_66:

(Start: 6 @43566 has 126 MA's), (Start: 9 @43605 has 1 MA's), (Start: 12 @43611 has 1 MA's), (17, 43635), (18, 43653), (25, 43785), (28, 43800), (29, 43803), (30, 43806), (36, 43923), (37, 43941), (67, 44154), (98, 44370), (100, 44382), (102, 44388), (107, 44424), (113, 44472), (123, 44520),

Gene: LittleLaf_66 Start: 37113, Stop: 38066, Start Num: 11

Candidate Starts for LittleLaf_66:

(Start: 11 @37113 has 16 MA's), (29, 37311), (34, 37404), (38, 37452), (39, 37482), (46, 37533), (52, 37566), (58, 37605), (73, 37695), (78, 37728), (79, 37731), (84, 37779), (86, 37797), (87, 37818), (96, 37884), (99, 37896), (115, 38004),

Gene: Loadrie_60 Start: 43584, Stop: 44516, Start Num: 10

Candidate Starts for Loadrie_60:

(Start: 10 @43584 has 44 MA's), (30, 43782), (56, 44079), (65, 44118), (67, 44130), (69, 44136), (81, 44193), (84, 44235), (85, 44241), (96, 44340), (97, 44343), (101, 44361), (106, 44394), (107, 44400), (109, 44412), (113, 44448), (121, 44490),

Gene: MAckerman_58 Start: 41355, Stop: 42287, Start Num: 10

Candidate Starts for MAckerman_58:

(Start: 10 @41355 has 44 MA's), (30, 41553), (56, 41850), (57, 41856), (63, 41877), (65, 41889), (67, 41901), (78, 41955), (80, 41961), (84, 42006), (85, 42012), (86, 42024), (96, 42111), (97, 42114), (98, 42117), (101, 42132), (106, 42165), (108, 42177), (109, 42183), (113, 42219), (118, 42252), (121, 42261),

Gene: MISSy_68 Start: 44069, Stop: 45037, Start Num: 6

Candidate Starts for MISSy_68:

(Start: 6 @44069 has 126 MA's), (Start: 9 @44108 has 1 MA's), (Start: 12 @44114 has 1 MA's), (17, 44138), (18, 44156), (25, 44288), (28, 44303), (29, 44306), (30, 44309), (36, 44426), (37, 44444), (67, 44657), (98, 44873), (100, 44885), (102, 44891), (107, 44927), (113, 44975), (123, 45023),

Gene: MPhalcon_68 Start: 44062, Stop: 45030, Start Num: 6

Candidate Starts for MPhalcon_68:

(Start: 6 @44062 has 126 MA's), (Start: 9 @44101 has 1 MA's), (Start: 12 @44107 has 1 MA's), (17, 44131), (18, 44149), (25, 44281), (28, 44296), (29, 44299), (30, 44302), (36, 44419), (37, 44437), (67, 44650), (98, 44866), (100, 44878), (102, 44884), (107, 44920), (113, 44968), (123, 45016),

Gene: MadamMonkfish_67 Start: 43290, Stop: 44258, Start Num: 6

Candidate Starts for MadamMonkfish_67:

(Start: 6 @43290 has 126 MA's), (Start: 9 @43329 has 1 MA's), (Start: 12 @43335 has 1 MA's), (17, 43359), (18, 43377), (25, 43509), (28, 43524), (29, 43527), (30, 43530), (36, 43647), (37, 43665), (67, 43878), (98, 44094), (100, 44106), (102, 44112), (107, 44148), (113, 44196), (123, 44244),

Gene: Manda_67 Start: 44571, Stop: 45539, Start Num: 6

Candidate Starts for Manda_67:

(Start: 6 @44571 has 126 MA's), (Start: 9 @44610 has 1 MA's), (Start: 12 @44616 has 1 MA's), (17, 44640), (18, 44658), (25, 44790), (28, 44805), (29, 44808), (30, 44811), (36, 44928), (37, 44946), (67, 45159), (98, 45375), (100, 45387), (102, 45393), (107, 45429), (113, 45477), (123, 45525),

Gene: Marshmallow_65 Start: 44839, Stop: 45807, Start Num: 6

Candidate Starts for Marshmallow_65:

(Start: 6 @44839 has 126 MA's), (Start: 9 @44878 has 1 MA's), (Start: 12 @44884 has 1 MA's), (17, 44908), (18, 44926), (25, 45058), (28, 45073), (29, 45076), (30, 45079), (36, 45196), (37, 45214), (67, 45427), (98, 45643), (100, 45655), (102, 45661), (107, 45697), (113, 45745), (123, 45793),

Gene: Marvin_62 Start: 36871, Stop: 37824, Start Num: 11

Candidate Starts for Marvin_62:

(Start: 11 @36871 has 16 MA's), (29, 37069), (34, 37162), (38, 37210), (39, 37240), (46, 37291), (52, 37324), (58, 37363), (73, 37453), (78, 37486), (79, 37489), (84, 37537), (86, 37555), (87, 37576), (96, 37642), (99, 37654), (115, 37762),

Gene: MaryV_67 Start: 44513, Stop: 45418, Start Num: 16

Candidate Starts for MaryV_67:

(Start: 16 @44513 has 6 MA's), (25, 44666), (27, 44675), (28, 44681), (32, 44711), (33, 44723), (36, 44774), (45, 44882), (49, 44903), (51, 44918), (57, 44966), (71, 45032), (74, 45041), (83, 45098), (103, 45266), (105, 45284), (114, 45350), (116, 45356), (117, 45371), (124, 45407),

Gene: Maxxinista_69 Start: 43941, Stop: 44909, Start Num: 6

Candidate Starts for Maxxinista_69:

(Start: 6 @43941 has 126 MA's), (Start: 9 @43980 has 1 MA's), (Start: 12 @43986 has 1 MA's), (17, 44010), (18, 44028), (25, 44160), (28, 44175), (29, 44178), (30, 44181), (36, 44298), (37, 44316), (67, 44529), (98, 44745), (100, 44757), (102, 44763), (107, 44799), (113, 44847), (123, 44895),

Gene: Miley16_61 Start: 43496, Stop: 44428, Start Num: 10

Candidate Starts for Miley16_61:

(Start: 10 @43496 has 44 MA's), (30, 43694), (56, 43991), (65, 44030), (67, 44042), (69, 44048), (81, 44105), (84, 44147), (85, 44153), (96, 44252), (97, 44255), (101, 44273), (106, 44306), (107, 44312), (109, 44324), (113, 44360), (121, 44402),

Gene: Mindy_66 Start: 43154, Stop: 44122, Start Num: 6

Candidate Starts for Mindy_66:

(Start: 6 @43154 has 126 MA's), (Start: 9 @43193 has 1 MA's), (Start: 12 @43199 has 1 MA's), (17, 43223), (18, 43241), (25, 43373), (28, 43388), (29, 43391), (30, 43394), (36, 43511), (37, 43529), (67, 43742), (98, 43958), (100, 43970), (102, 43976), (107, 44012), (113, 44060), (123, 44108),

Gene: Miniwave_62 Start: 43607, Stop: 44575, Start Num: 6

Candidate Starts for Miniwave_62:

(Start: 6 @43607 has 126 MA's), (Start: 9 @43646 has 1 MA's), (Start: 12 @43652 has 1 MA's), (17, 43676), (18, 43694), (25, 43826), (28, 43841), (29, 43844), (30, 43847), (36, 43964), (37, 43982), (67, 44195), (98, 44411), (100, 44423), (102, 44429), (107, 44465), (113, 44513), (123, 44561),

Gene: Misfit_68 Start: 45081, Stop: 46049, Start Num: 6

Candidate Starts for Misfit_68:

(Start: 6 @45081 has 126 MA's), (Start: 9 @45120 has 1 MA's), (Start: 12 @45126 has 1 MA's), (17, 45150), (18, 45168), (25, 45300), (28, 45315), (29, 45318), (30, 45321), (36, 45438), (37, 45456), (67, 45669), (98, 45885), (100, 45897), (102, 45903), (107, 45939), (113, 45987), (123, 46035),

Gene: MkaliMitinis3_62 Start: 43568, Stop: 44500, Start Num: 10

Candidate Starts for MkaliMitinis3_62:

(Start: 10 @43568 has 44 MA's), (30, 43766), (56, 44063), (65, 44102), (67, 44114), (69, 44120), (81, 44177), (84, 44219), (85, 44225), (96, 44324), (97, 44327), (101, 44345), (106, 44378), (107, 44384), (109, 44396), (113, 44432), (121, 44474),

Gene: Moldemort_70 Start: 44163, Stop: 45131, Start Num: 6

Candidate Starts for Moldemort_70:

(Start: 6 @44163 has 126 MA's), (Start: 9 @44202 has 1 MA's), (Start: 12 @44208 has 1 MA's), (17, 44232), (18, 44250), (25, 44382), (28, 44397), (29, 44400), (30, 44403), (36, 44520), (37, 44538), (67, 44751), (98, 44967), (100, 44979), (102, 44985), (107, 45021), (113, 45069), (123, 45117),

Gene: MosMoris_63 Start: 36804, Stop: 37757, Start Num: 11

Candidate Starts for MosMoris_63:

(Start: 11 @36804 has 16 MA's), (29, 37002), (34, 37095), (38, 37143), (39, 37173), (46, 37224), (52, 37257), (58, 37296), (73, 37386), (78, 37419), (79, 37422), (84, 37470), (86, 37488), (87, 37509), (96, 37575), (99, 37587), (115, 37695),

Gene: Mosby_63 Start: 43364, Stop: 44332, Start Num: 6

Candidate Starts for Mosby_63:

(Start: 6 @43364 has 126 MA's), (Start: 9 @43403 has 1 MA's), (Start: 12 @43409 has 1 MA's), (17, 43433), (18, 43451), (25, 43583), (28, 43598), (29, 43601), (30, 43604), (36, 43721), (37, 43739), (67, 43952), (98, 44168), (100, 44180), (102, 44186), (107, 44222), (113, 44270), (123, 44318),

Gene: MrMagoo_65 Start: 42057, Stop: 42803, Start Num: 26

Candidate Starts for MrMagoo_65:

(Start: 26 @42057 has 5 MA's), (59, 42363), (60, 42369), (62, 42375), (68, 42402), (81, 42459), (84, 42498), (85, 42504), (90, 42558), (91, 42561), (103, 42651), (107, 42678), (120, 42765), (124, 42792),

Gene: Murica_70 Start: 45016, Stop: 45984, Start Num: 6

Candidate Starts for Murica_70:

(Start: 6 @45016 has 126 MA's), (Start: 9 @45055 has 1 MA's), (Start: 12 @45061 has 1 MA's), (17, 45085), (18, 45103), (25, 45235), (28, 45250), (29, 45253), (30, 45256), (36, 45373), (37, 45391), (67, 45604), (98, 45820), (100, 45832), (102, 45838), (107, 45874), (113, 45922), (123, 45970),

Gene: Murphy_67 Start: 44453, Stop: 45421, Start Num: 6

Candidate Starts for Murphy_67:

(Start: 6 @44453 has 126 MA's), (Start: 9 @44492 has 1 MA's), (Start: 12 @44498 has 1 MA's), (17, 44522), (18, 44540), (25, 44672), (28, 44687), (29, 44690), (30, 44693), (36, 44810), (37, 44828), (67, 45041), (98, 45257), (100, 45269), (102, 45275), (107, 45311), (113, 45359), (123, 45407),

Gene: Myrale_67 Start: 44704, Stop: 45672, Start Num: 6

Candidate Starts for Myrale_67:

(Start: 6 @44704 has 126 MA's), (Start: 9 @44743 has 1 MA's), (Start: 12 @44749 has 1 MA's), (17, 44773), (18, 44791), (25, 44923), (28, 44938), (29, 44941), (30, 44944), (36, 45061), (37, 45079), (67, 45292), (98, 45508), (100, 45520), (102, 45526), (107, 45562), (113, 45610), (123, 45658),

Gene: Nala_69 Start: 44574, Stop: 45542, Start Num: 6

Candidate Starts for Nala_69:

(Start: 6 @44574 has 126 MA's), (Start: 9 @44613 has 1 MA's), (Start: 12 @44619 has 1 MA's), (17, 44643), (18, 44661), (25, 44793), (28, 44808), (29, 44811), (30, 44814), (36, 44931), (37, 44949), (67, 45162), (98, 45378), (100, 45390), (102, 45396), (107, 45432), (113, 45480), (123, 45528),

Gene: Nanosmite_61 Start: 41136, Stop: 41996, Start Num: 19

Candidate Starts for Nanosmite_61:

(Start: 19 @41136 has 14 MA's), (Start: 26 @41250 has 5 MA's), (53, 41508), (56, 41544), (60, 41562), (62, 41568), (81, 41652), (84, 41691), (90, 41751), (103, 41844), (110, 41895), (124, 41985), (125, 41988),

Gene: NelitzaMV_65 Start: 43653, Stop: 44621, Start Num: 6

Candidate Starts for NelitzaMV_65:

(Start: 6 @43653 has 126 MA's), (Start: 9 @43692 has 1 MA's), (Start: 12 @43698 has 1 MA's), (17, 43722), (18, 43740), (25, 43872), (28, 43887), (29, 43890), (30, 43893), (36, 44010), (37, 44028), (67, 44241), (98, 44457), (100, 44469), (102, 44475), (107, 44511), (113, 44559), (123, 44607),

Gene: Netyap_62 Start: 43497, Stop: 44429, Start Num: 10

Candidate Starts for Netyap_62:

(Start: 10 @43497 has 44 MA's), (30, 43695), (56, 43992), (65, 44031), (67, 44043), (69, 44049), (81, 44106), (84, 44148), (85, 44154), (96, 44253), (97, 44256), (101, 44274), (106, 44307), (107, 44313), (109, 44325), (113, 44361), (121, 44403),

Gene: Neville_58 Start: 38801, Stop: 39676, Start Num: 13

Candidate Starts for Neville_58:

(Start: 13 @38801 has 7 MA's), (21, 38909), (24, 38951), (29, 38987), (45, 39212), (48, 39227), (54, 39266), (56, 39287), (61, 39308), (69, 39344), (70, 39359), (82, 39374), (84, 39407), (87, 39446), (88, 39449), (94, 39494), (95, 39506), (96, 39512), (97, 39515), (98, 39518), (107, 39572), (108, 39578), (109, 39584), (112, 39611), (113, 39620),

Gene: Nicholasp3_61 Start: 43532, Stop: 44464, Start Num: 10

Candidate Starts for Nicholasp3_61:

(Start: 10 @43532 has 44 MA's), (30, 43730), (56, 44027), (65, 44066), (67, 44078), (69, 44084), (81, 44141), (84, 44183), (85, 44189), (96, 44288), (97, 44291), (101, 44309), (106, 44342), (107, 44348), (109, 44360), (113, 44396), (121, 44438),

Gene: Nimrod_68 Start: 45271, Stop: 46239, Start Num: 6

Candidate Starts for Nimrod_68:

(Start: 6 @45271 has 126 MA's), (Start: 9 @45310 has 1 MA's), (Start: 12 @45316 has 1 MA's), (17, 45340), (18, 45358), (25, 45490), (28, 45505), (29, 45508), (30, 45511), (36, 45628), (37, 45646), (67, 45859), (98, 46075), (100, 46087), (102, 46093), (107, 46129), (113, 46177), (123, 46225),

Gene: NoSleep_68 Start: 43911, Stop: 44879, Start Num: 6

Candidate Starts for NoSleep_68:

(Start: 6 @43911 has 126 MA's), (Start: 9 @43950 has 1 MA's), (Start: 12 @43956 has 1 MA's), (17, 43980), (18, 43998), (25, 44130), (28, 44145), (29, 44148), (30, 44151), (36, 44268), (37, 44286), (67, 44499), (98, 44715), (100, 44727), (102, 44733), (107, 44769), (113, 44817), (123, 44865),

Gene: Octobien14_58 Start: 39326, Stop: 40258, Start Num: 13

Candidate Starts for Octobien14_58:

(Start: 12 @39323 has 1 MA's), (Start: 13 @39326 has 7 MA's), (21, 39443), (23, 39482), (29, 39521), (35, 39629), (36, 39641), (41, 39716), (45, 39746), (47, 39758), (55, 39809), (56, 39821), (66, 39869), (69, 39878), (70, 39893), (72, 39902), (77, 39929), (83, 39980), (84, 39989), (85, 39995), (93, 40064), (94, 40076), (95, 40088), (96, 40094), (97, 40097), (98, 40100), (121, 40244),

Gene: OhShagHennessy_57 Start: 40797, Stop: 41738, Start Num: 10

Candidate Starts for OhShagHennessy_57:

(Start: 6 @40755 has 126 MA's), (Start: 10 @40797 has 44 MA's), (15, 40818), (30, 41004), (56, 41301), (57, 41307), (63, 41328), (65, 41340), (67, 41352), (78, 41406), (80, 41412), (84, 41457), (85, 41463), (86, 41475), (96, 41562), (97, 41565), (98, 41568), (101, 41583), (109, 41634), (113, 41670), (118, 41703), (121, 41712),

Gene: OrionPax_66 Start: 43659, Stop: 44627, Start Num: 6

Candidate Starts for OrionPax_66:

(Start: 6 @43659 has 126 MA's), (Start: 9 @43698 has 1 MA's), (Start: 12 @43704 has 1 MA's), (17, 43728), (18, 43746), (25, 43878), (28, 43893), (29, 43896), (30, 43899), (36, 44016), (37, 44034), (67, 44247), (98, 44463), (100, 44475), (102, 44481), (107, 44517), (113, 44565), (123, 44613),

Gene: PYPDinur_57 Start: 42223, Stop: 43155, Start Num: 10

Candidate Starts for PYPDinur_57:

(Start: 10 @42223 has 44 MA's), (30, 42421), (56, 42718), (57, 42724), (61, 42739), (67, 42769), (69, 42775), (80, 42829), (81, 42832), (84, 42874), (85, 42880), (86, 42892), (97, 42982), (101, 43000), (106, 43033), (107, 43039), (109, 43051), (113, 43087), (121, 43129),

Gene: Palpatine_69 Start: 45043, Stop: 46011, Start Num: 6

Candidate Starts for Palpatine_69:

(Start: 6 @45043 has 126 MA's), (Start: 9 @45082 has 1 MA's), (Start: 12 @45088 has 1 MA's), (17, 45112), (18, 45130), (25, 45262), (28, 45277), (29, 45280), (30, 45283), (36, 45400), (37, 45418), (67, 45631), (98, 45847), (100, 45859), (102, 45865), (107, 45901), (113, 45949), (123, 45997),

Gene: Paperbeatsrock_66 Start: 44285, Stop: 45253, Start Num: 6

Candidate Starts for Paperbeatsrock_66:

(Start: 6 @44285 has 126 MA's), (Start: 9 @44324 has 1 MA's), (Start: 12 @44330 has 1 MA's), (17, 44354), (18, 44372), (25, 44504), (28, 44519), (29, 44522), (30, 44525), (36, 44642), (37, 44660), (67, 44873), (98, 45089), (100, 45101), (102, 45107), (107, 45143), (113, 45191), (123, 45239),

Gene: Pat3_65 Start: 42808, Stop: 43776, Start Num: 6

Candidate Starts for Pat3_65:

(Start: 6 @42808 has 126 MA's), (Start: 9 @42847 has 1 MA's), (Start: 12 @42853 has 1 MA's), (17, 42877), (18, 42895), (25, 43027), (28, 43042), (29, 43045), (30, 43048), (36, 43165), (37, 43183), (67, 43396), (98, 43612), (100, 43624), (102, 43630), (107, 43666), (113, 43714), (123, 43762),

Gene: PegLeg_56 Start: 39491, Stop: 40351, Start Num: 19

Candidate Starts for PegLeg_56:

(Start: 19 @39491 has 14 MA's), (Start: 26 @39605 has 5 MA's), (53, 39863), (56, 39899), (60, 39917), (62, 39923), (64, 39929), (68, 39950), (81, 40007), (84, 40046), (85, 40052), (89, 40103), (103, 40199), (110, 40250), (112, 40265), (124, 40340), (125, 40343),

Gene: Petra64142_71 Start: 45507, Stop: 46475, Start Num: 6

Candidate Starts for Petra64142_71:

(Start: 6 @45507 has 126 MA's), (Start: 9 @45546 has 1 MA's), (Start: 12 @45552 has 1 MA's), (17, 45576), (18, 45594), (25, 45726), (28, 45741), (29, 45744), (30, 45747), (36, 45864), (37, 45882), (67, 46095), (98, 46311), (100, 46323), (102, 46329), (107, 46365), (113, 46413), (123, 46461),

Gene: Phaja_65 Start: 44111, Stop: 45079, Start Num: 6

Candidate Starts for Phaja_65:

(Start: 6 @44111 has 126 MA's), (Start: 9 @44150 has 1 MA's), (Start: 12 @44156 has 1 MA's), (17, 44180), (18, 44198), (25, 44330), (28, 44345), (29, 44348), (30, 44351), (36, 44468), (37, 44486), (67, 44699), (98, 44915), (100, 44927), (102, 44933), (107, 44969), (113, 45017), (123, 45065),

Gene: Pharsalus_64 Start: 44085, Stop: 45053, Start Num: 6

Candidate Starts for Pharsalus_64:

(Start: 6 @44085 has 126 MA's), (Start: 9 @44124 has 1 MA's), (Start: 12 @44130 has 1 MA's), (17, 44154), (18, 44172), (25, 44304), (28, 44319), (29, 44322), (30, 44325), (36, 44442), (37, 44460), (67, 44673), (98, 44889), (100, 44901), (102, 44907), (107, 44943), (113, 44991), (123, 45039),

Gene: PhatBacter_71 Start: 45060, Stop: 46028, Start Num: 6

Candidate Starts for PhatBacter_71:

(Start: 6 @45060 has 126 MA's), (Start: 9 @45099 has 1 MA's), (Start: 12 @45105 has 1 MA's), (17, 45129), (18, 45147), (25, 45279), (28, 45294), (29, 45297), (30, 45300), (36, 45417), (37, 45435), (67, 45648), (98, 45864), (100, 45876), (101, 45879), (102, 45882), (107, 45918), (113, 45966), (123, 46014),

Gene: Phaux_69 Start: 45055, Stop: 46023, Start Num: 6

Candidate Starts for Phaux_69:

(Start: 6 @45055 has 126 MA's), (Start: 9 @45094 has 1 MA's), (Start: 12 @45100 has 1 MA's), (17, 45124), (18, 45142), (25, 45274), (28, 45289), (29, 45292), (30, 45295), (36, 45412), (37, 45430), (67, 45643), (98, 45859), (100, 45871), (102, 45877), (107, 45913), (113, 45961), (123, 46009),

Gene: Phrux_64 Start: 43651, Stop: 44619, Start Num: 6

Candidate Starts for Phrux_64:

(Start: 6 @43651 has 126 MA's), (Start: 9 @43690 has 1 MA's), (Start: 12 @43696 has 1 MA's), (17, 43720), (18, 43738), (25, 43870), (28, 43885), (29, 43888), (30, 43891), (36, 44008), (37, 44026), (67, 44239), (98, 44455), (100, 44467), (102, 44473), (107, 44509), (113, 44557), (123, 44605),

Gene: Poise_66 Start: 36700, Stop: 37653, Start Num: 11

Candidate Starts for Poise_66:

(Start: 11 @36700 has 16 MA's), (29, 36898), (34, 36991), (38, 37039), (39, 37069), (46, 37120), (52, 37153), (58, 37192), (73, 37282), (78, 37315), (79, 37318), (84, 37366), (86, 37384), (87, 37405), (96, 37471), (99, 37483), (115, 37591),

Gene: Policronamos_71 Start: 45055, Stop: 46023, Start Num: 6

Candidate Starts for Policronamos_71:

(Start: 6 @45055 has 126 MA's), (Start: 9 @45094 has 1 MA's), (Start: 12 @45100 has 1 MA's), (17, 45124), (18, 45142), (25, 45274), (28, 45289), (29, 45292), (30, 45295), (36, 45412), (37, 45430), (67, 45643), (98, 45859), (100, 45871), (102, 45877), (107, 45913), (113, 45961), (123, 46009),

Gene: Porky_66 Start: 43481, Stop: 44449, Start Num: 6

Candidate Starts for Porky_66:

(Start: 6 @43481 has 126 MA's), (Start: 9 @43520 has 1 MA's), (Start: 12 @43526 has 1 MA's), (17, 43550), (18, 43568), (25, 43700), (28, 43715), (29, 43718), (30, 43721), (36, 43838), (37, 43856), (67, 44069), (98, 44285), (100, 44297), (102, 44303), (107, 44339), (113, 44387), (123, 44435),

Gene: Pringar_65 Start: 36989, Stop: 37942, Start Num: 11

Candidate Starts for Pringar_65:

(3, 36821), (Start: 11 @36989 has 16 MA's), (29, 37187), (34, 37280), (38, 37328), (39, 37358), (46, 37409), (52, 37442), (58, 37481), (73, 37571), (78, 37604), (79, 37607), (84, 37655), (86, 37673), (87, 37694), (96, 37760), (99, 37772), (115, 37880),

Gene: Pumpkin_70 Start: 44709, Stop: 45677, Start Num: 6

Candidate Starts for Pumpkin_70:

(Start: 6 @44709 has 126 MA's), (Start: 9 @44748 has 1 MA's), (Start: 12 @44754 has 1 MA's), (17, 44778), (18, 44796), (25, 44928), (28, 44943), (29, 44946), (30, 44949), (36, 45066), (37, 45084), (67,

45297), (98, 45513), (100, 45525), (102, 45531), (107, 45567), (113, 45615), (123, 45663),

Gene: Quallification_68 Start: 44693, Stop: 45661, Start Num: 6

Candidate Starts for Quallification_68:

(Start: 6 @44693 has 126 MA's), (Start: 9 @44732 has 1 MA's), (Start: 12 @44738 has 1 MA's), (17, 44762), (18, 44780), (25, 44912), (28, 44927), (29, 44930), (30, 44933), (36, 45050), (37, 45068), (67, 45281), (98, 45497), (100, 45509), (102, 45515), (107, 45551), (113, 45599), (123, 45647),

Gene: Quby_59 Start: 42121, Stop: 43053, Start Num: 10

Candidate Starts for Quby_59:

(Start: 10 @42121 has 44 MA's), (30, 42319), (52, 42586), (56, 42616), (57, 42622), (61, 42637), (67, 42667), (69, 42673), (80, 42727), (81, 42730), (84, 42772), (85, 42778), (86, 42790), (97, 42880), (101, 42898), (106, 42931), (107, 42937), (109, 42949), (113, 42985), (121, 43027),

Gene: Rabbitrun_58 Start: 39022, Stop: 39897, Start Num: 13

Candidate Starts for Rabbitrun_58:

(5, 38893), (Start: 13 @39022 has 7 MA's), (21, 39130), (24, 39172), (29, 39208), (45, 39433), (48, 39448), (56, 39508), (57, 39514), (58, 39517), (63, 39535), (69, 39565), (70, 39580), (82, 39595), (84, 39628), (88, 39670), (94, 39715), (95, 39727), (96, 39733), (97, 39736), (98, 39739), (107, 39793), (108, 39799), (109, 39805), (112, 39832), (113, 39841),

Gene: Raela_66 Start: 37257, Stop: 38210, Start Num: 11

Candidate Starts for Raela_66:

(Start: 11 @37257 has 16 MA's), (29, 37455), (34, 37548), (38, 37596), (39, 37626), (46, 37677), (52, 37710), (58, 37749), (73, 37839), (78, 37872), (79, 37875), (84, 37923), (86, 37941), (87, 37962), (96, 38028), (99, 38040), (115, 38148),

Gene: Rakim_68 Start: 44162, Stop: 45130, Start Num: 6

Candidate Starts for Rakim_68:

(Start: 6 @44162 has 126 MA's), (Start: 9 @44201 has 1 MA's), (Start: 12 @44207 has 1 MA's), (17, 44231), (18, 44249), (25, 44381), (28, 44396), (29, 44399), (30, 44402), (36, 44519), (37, 44537), (67, 44750), (98, 44966), (100, 44978), (102, 44984), (107, 45020), (113, 45068), (123, 45116),

Gene: RedRaider77_65 Start: 36645, Stop: 37598, Start Num: 11

Candidate Starts for RedRaider77_65:

(Start: 11 @36645 has 16 MA's), (29, 36843), (34, 36936), (38, 36984), (39, 37014), (46, 37065), (52, 37098), (58, 37137), (73, 37227), (78, 37260), (79, 37263), (84, 37311), (86, 37329), (87, 37350), (96, 37416), (99, 37428), (115, 37536),

Gene: Reindeer_58 Start: 40686, Stop: 41546, Start Num: 19

Candidate Starts for Reindeer_58:

(Start: 19 @40686 has 14 MA's), (Start: 26 @40800 has 5 MA's), (31, 40830), (42, 40980), (50, 41034), (52, 41055), (62, 41118), (81, 41202), (84, 41241), (85, 41247), (89, 41298), (103, 41394), (124, 41535),

Gene: Rey_63 Start: 41702, Stop: 42604, Start Num: 16

Candidate Starts for Rey_63:

(Start: 16 @41702 has 6 MA's), (Start: 19 @41744 has 14 MA's), (20, 41774), (Start: 26 @41858 has 5 MA's), (28, 41867), (56, 42152), (60, 42170), (62, 42176), (76, 42251), (81, 42260), (84, 42299), (103, 42452), (110, 42503), (123, 42575),

Gene: Rimmer_68 Start: 44401, Stop: 45369, Start Num: 6

Candidate Starts for Rimmer_68:

(Start: 6 @44401 has 126 MA's), (Start: 9 @44440 has 1 MA's), (Start: 12 @44446 has 1 MA's), (17, 44470), (18, 44488), (25, 44620), (28, 44635), (29, 44638), (30, 44641), (36, 44758), (37, 44776), (67, 44989), (98, 45205), (100, 45217), (102, 45223), (107, 45259), (113, 45307), (123, 45355),

Gene: RiverMonster_67 Start: 44229, Stop: 45197, Start Num: 6

Candidate Starts for RiverMonster_67:

(Start: 6 @44229 has 126 MA's), (Start: 9 @44268 has 1 MA's), (Start: 12 @44274 has 1 MA's), (17, 44298), (18, 44316), (25, 44448), (28, 44463), (29, 44466), (30, 44469), (36, 44586), (37, 44604), (67, 44817), (98, 45033), (100, 45045), (102, 45051), (107, 45087), (113, 45135), (123, 45183),

Gene: Rose5_59 Start: 41782, Stop: 42714, Start Num: 10

Candidate Starts for Rose5_59:

(Start: 10 @41782 has 44 MA's), (30, 41980), (56, 42277), (57, 42283), (63, 42304), (65, 42316), (67, 42328), (69, 42334), (78, 42382), (80, 42388), (84, 42433), (85, 42439), (86, 42451), (96, 42538), (97, 42541), (98, 42544), (101, 42559), (109, 42610), (113, 42646), (121, 42688),

Gene: Rumpelstiltskin_60 Start: 42925, Stop: 43857, Start Num: 10

Candidate Starts for Rumpelstiltskin_60:

(Start: 10 @42925 has 44 MA's), (30, 43123), (56, 43420), (65, 43459), (67, 43471), (69, 43477), (81, 43534), (84, 43576), (85, 43582), (96, 43681), (97, 43684), (101, 43702), (106, 43735), (107, 43741), (109, 43753), (113, 43789), (121, 43831),

Gene: Saints25_66 Start: 43639, Stop: 44607, Start Num: 6

Candidate Starts for Saints25_66:

(Start: 6 @43639 has 126 MA's), (Start: 9 @43678 has 1 MA's), (Start: 12 @43684 has 1 MA's), (17, 43708), (18, 43726), (25, 43858), (28, 43873), (29, 43876), (30, 43879), (36, 43996), (37, 44014), (67, 44227), (98, 44443), (100, 44455), (102, 44461), (107, 44497), (113, 44545), (123, 44593),

Gene: Sarshaun_61 Start: 43592, Stop: 44524, Start Num: 10

Candidate Starts for Sarshaun_61:

(Start: 10 @43592 has 44 MA's), (30, 43790), (56, 44087), (65, 44126), (67, 44138), (69, 44144), (81, 44201), (84, 44243), (85, 44249), (96, 44348), (97, 44351), (101, 44369), (106, 44402), (107, 44408), (109, 44420), (113, 44456), (121, 44498),

Gene: Sassay_62 Start: 42326, Stop: 43294, Start Num: 6

Candidate Starts for Sassay_62:

(Start: 6 @42326 has 126 MA's), (Start: 9 @42365 has 1 MA's), (Start: 12 @42371 has 1 MA's), (17, 42395), (18, 42413), (25, 42545), (28, 42560), (29, 42563), (30, 42566), (36, 42683), (37, 42701), (67, 42914), (98, 43130), (100, 43142), (102, 43148), (107, 43184), (113, 43232), (123, 43280),

Gene: Sephiroth_57 Start: 39214, Stop: 40146, Start Num: 13

Candidate Starts for Sephiroth_57:

(Start: 12 @39211 has 1 MA's), (Start: 13 @39214 has 7 MA's), (21, 39331), (22, 39352), (23, 39370), (28, 39406), (29, 39409), (35, 39517), (45, 39634), (47, 39646), (54, 39688), (56, 39709), (61, 39730), (66, 39757), (69, 39766), (70, 39781), (72, 39790), (77, 39817), (83, 39868), (84, 39877), (85, 39883), (92, 39940), (94, 39964), (95, 39976), (96, 39982), (97, 39985), (98, 39988), (105, 40033), (109, 40054), (121, 40132), (122, 40135),

Gene: ShamWow_67 Start: 44548, Stop: 45516, Start Num: 6

Candidate Starts for ShamWow_67:

(Start: 6 @44548 has 126 MA's), (Start: 9 @44587 has 1 MA's), (Start: 12 @44593 has 1 MA's), (17, 44617), (18, 44635), (25, 44767), (28, 44782), (29, 44785), (30, 44788), (36, 44905), (37, 44923), (67, 45136), (98, 45352), (100, 45364), (102, 45370), (107, 45406), (113, 45454), (123, 45502),

Gene: Sheng711_59 Start: 42200, Stop: 43132, Start Num: 10

Candidate Starts for Sheng711_59:

(Start: 10 @42200 has 44 MA's), (30, 42398), (52, 42665), (56, 42695), (57, 42701), (61, 42716), (67, 42746), (69, 42752), (80, 42806), (81, 42809), (84, 42851), (85, 42857), (86, 42869), (97, 42959), (101, 42977), (106, 43010), (107, 43016), (109, 43028), (113, 43064), (121, 43106),

Gene: ShereKhan_66 Start: 44617, Stop: 45585, Start Num: 6

Candidate Starts for ShereKhan_66:

(Start: 6 @44617 has 126 MA's), (Start: 9 @44656 has 1 MA's), (Start: 12 @44662 has 1 MA's), (17, 44686), (18, 44704), (25, 44836), (28, 44851), (29, 44854), (30, 44857), (36, 44974), (37, 44992), (67, 45205), (98, 45421), (100, 45433), (102, 45439), (107, 45475), (113, 45523), (123, 45571),

Gene: Silverleaf_59 Start: 41517, Stop: 42449, Start Num: 10

Candidate Starts for Silverleaf_59:

(Start: 10 @41517 has 44 MA's), (30, 41715), (56, 42012), (57, 42018), (63, 42039), (65, 42051), (67, 42063), (69, 42069), (78, 42117), (80, 42123), (84, 42168), (85, 42174), (86, 42186), (97, 42276), (98, 42279), (101, 42294), (109, 42345), (113, 42381), (121, 42423),

Gene: Simpliphy_66 Start: 43629, Stop: 44597, Start Num: 6

Candidate Starts for Simpliphy_66:

(Start: 6 @43629 has 126 MA's), (Start: 9 @43668 has 1 MA's), (Start: 12 @43674 has 1 MA's), (17, 43698), (18, 43716), (25, 43848), (28, 43863), (29, 43866), (30, 43869), (36, 43986), (37, 44004), (67, 44217), (98, 44433), (100, 44445), (102, 44451), (107, 44487), (113, 44535), (123, 44583),

Gene: SirDuracell_66 Start: 42900, Stop: 43868, Start Num: 6

Candidate Starts for SirDuracell_66:

(Start: 6 @42900 has 126 MA's), (Start: 9 @42939 has 1 MA's), (Start: 12 @42945 has 1 MA's), (17, 42969), (18, 42987), (25, 43119), (28, 43134), (29, 43137), (30, 43140), (36, 43257), (37, 43275), (67, 43488), (98, 43704), (100, 43716), (102, 43722), (107, 43758), (113, 43806), (123, 43854),

Gene: Skinny_58 Start: 39921, Stop: 40781, Start Num: 19

Candidate Starts for Skinny_58:

(Start: 19 @39921 has 14 MA's), (Start: 26 @40035 has 5 MA's), (53, 40293), (56, 40329), (60, 40347), (62, 40353), (64, 40359), (68, 40380), (81, 40437), (84, 40476), (85, 40482), (89, 40533), (103, 40629), (110, 40680), (112, 40695), (124, 40770), (125, 40773),

Gene: SlimJimmy_55 Start: 39476, Stop: 40336, Start Num: 19

Candidate Starts for SlimJimmy_55:

(Start: 19 @39476 has 14 MA's), (Start: 26 @39590 has 5 MA's), (53, 39848), (56, 39884), (60, 39902), (62, 39908), (64, 39914), (68, 39935), (81, 39992), (84, 40031), (85, 40037), (89, 40088), (103, 40184), (110, 40235), (112, 40250), (124, 40325), (125, 40328),

Gene: SophKB_64 Start: 43304, Stop: 44272, Start Num: 6

Candidate Starts for SophKB_64:

(Start: 6 @43304 has 126 MA's), (Start: 9 @43343 has 1 MA's), (Start: 12 @43349 has 1 MA's), (17, 43373), (18, 43391), (25, 43523), (28, 43538), (29, 43541), (30, 43544), (36, 43661), (37, 43679), (67, 43892), (98, 44108), (100, 44120), (102, 44126), (107, 44162), (113, 44210), (123, 44258),

Gene: Sotrice96_68 Start: 44307, Stop: 45275, Start Num: 6

Candidate Starts for Sotrice96_68:

(Start: 6 @44307 has 126 MA's), (Start: 9 @44346 has 1 MA's), (Start: 12 @44352 has 1 MA's), (17, 44376), (18, 44394), (25, 44526), (28, 44541), (29, 44544), (30, 44547), (36, 44664), (37, 44682), (67,

44895), (98, 45111), (100, 45123), (102, 45129), (107, 45165), (113, 45213), (123, 45261),

Gene: Stank_70 Start: 44562, Stop: 45530, Start Num: 6

Candidate Starts for Stank_70:

(Start: 6 @44562 has 126 MA's), (Start: 9 @44601 has 1 MA's), (Start: 12 @44607 has 1 MA's), (17, 44631), (18, 44649), (25, 44781), (28, 44796), (29, 44799), (30, 44802), (36, 44919), (37, 44937), (67, 45150), (98, 45366), (100, 45378), (102, 45384), (107, 45420), (113, 45468), (123, 45516),

Gene: Stark_68 Start: 44112, Stop: 45080, Start Num: 6

Candidate Starts for Stark_68:

(Start: 6 @44112 has 126 MA's), (Start: 9 @44151 has 1 MA's), (Start: 12 @44157 has 1 MA's), (17, 44181), (18, 44199), (25, 44331), (28, 44346), (29, 44349), (30, 44352), (36, 44469), (37, 44487), (67, 44700), (98, 44916), (100, 44928), (102, 44934), (107, 44970), (113, 45018), (123, 45066),

Gene: StellaBean_65 Start: 43872, Stop: 44840, Start Num: 6

Candidate Starts for StellaBean_65:

(Start: 6 @43872 has 126 MA's), (Start: 9 @43911 has 1 MA's), (Start: 12 @43917 has 1 MA's), (17, 43941), (18, 43959), (25, 44091), (28, 44106), (29, 44109), (30, 44112), (36, 44229), (37, 44247), (67, 44460), (98, 44676), (100, 44688), (102, 44694), (107, 44730), (113, 44778), (123, 44826),

Gene: StolenFromERC_70 Start: 44344, Stop: 45312, Start Num: 6

Candidate Starts for StolenFromERC_70:

(Start: 6 @44344 has 126 MA's), (Start: 9 @44383 has 1 MA's), (Start: 12 @44389 has 1 MA's), (17, 44413), (18, 44431), (25, 44563), (28, 44578), (29, 44581), (30, 44584), (36, 44701), (37, 44719), (67, 44932), (98, 45148), (100, 45160), (102, 45166), (107, 45202), (113, 45250), (123, 45298),

Gene: Syleon_59 Start: 39155, Stop: 40087, Start Num: 13

Candidate Starts for Syleon_59:

(Start: 12 @39152 has 1 MA's), (Start: 13 @39155 has 7 MA's), (21, 39272), (22, 39293), (23, 39311), (28, 39347), (29, 39350), (35, 39458), (45, 39575), (47, 39587), (54, 39629), (56, 39650), (61, 39671), (66, 39698), (69, 39707), (70, 39722), (72, 39731), (77, 39758), (83, 39809), (84, 39818), (85, 39824), (92, 39881), (93, 39893), (94, 39905), (95, 39917), (96, 39923), (97, 39926), (98, 39929), (105, 39974), (109, 39995), (121, 40073), (122, 40076),

Gene: TBrady12_70 Start: 44046, Stop: 45014, Start Num: 6

Candidate Starts for TBrady12_70:

(Start: 6 @44046 has 126 MA's), (Start: 9 @44085 has 1 MA's), (Start: 12 @44091 has 1 MA's), (17, 44115), (18, 44133), (25, 44265), (28, 44280), (29, 44283), (30, 44286), (36, 44403), (37, 44421), (67, 44634), (98, 44850), (100, 44862), (102, 44868), (107, 44904), (113, 44952), (123, 45000),

Gene: Tarkin_66 Start: 44294, Stop: 45262, Start Num: 6

Candidate Starts for Tarkin_66:

(Start: 6 @44294 has 126 MA's), (Start: 9 @44333 has 1 MA's), (Start: 12 @44339 has 1 MA's), (17, 44363), (18, 44381), (25, 44513), (28, 44528), (29, 44531), (30, 44534), (36, 44651), (37, 44669), (67, 44882), (98, 45098), (100, 45110), (102, 45116), (107, 45152), (113, 45200), (123, 45248),

Gene: TeardropMSU_63 Start: 43294, Stop: 44262, Start Num: 6

Candidate Starts for TeardropMSU_63:

(Start: 6 @43294 has 126 MA's), (Start: 9 @43333 has 1 MA's), (Start: 12 @43339 has 1 MA's), (17, 43363), (18, 43381), (25, 43513), (28, 43528), (29, 43531), (30, 43534), (36, 43651), (37, 43669), (67, 43882), (98, 44098), (100, 44110), (102, 44116), (107, 44152), (113, 44200), (123, 44248),

Gene: Teaspoon_68 Start: 44188, Stop: 45156, Start Num: 6

Candidate Starts for Teaspoon_68:

(Start: 6 @44188 has 126 MA's), (Start: 9 @44227 has 1 MA's), (Start: 12 @44233 has 1 MA's), (17, 44257), (18, 44275), (25, 44407), (28, 44422), (29, 44425), (30, 44428), (36, 44545), (37, 44563), (67, 44776), (98, 44992), (100, 45004), (102, 45010), (107, 45046), (113, 45094), (123, 45142),

Gene: Terminus_70 Start: 45081, Stop: 46049, Start Num: 6

Candidate Starts for Terminus_70:

(Start: 6 @45081 has 126 MA's), (Start: 9 @45120 has 1 MA's), (Start: 12 @45126 has 1 MA's), (17, 45150), (18, 45168), (25, 45300), (28, 45315), (29, 45318), (30, 45321), (36, 45438), (37, 45456), (67, 45669), (98, 45885), (100, 45897), (102, 45903), (107, 45939), (113, 45987), (123, 46035),

Gene: Tesla_63 Start: 36494, Stop: 37447, Start Num: 11

Candidate Starts for Tesla_63:

(Start: 11 @36494 has 16 MA's), (29, 36692), (34, 36785), (38, 36833), (39, 36863), (46, 36914), (52, 36947), (58, 36986), (73, 37076), (78, 37109), (79, 37112), (84, 37160), (86, 37178), (87, 37199), (96, 37265), (99, 37277), (115, 37385),

Gene: Thresher_69 Start: 45171, Stop: 46139, Start Num: 6

Candidate Starts for Thresher_69:

(Start: 6 @45171 has 126 MA's), (Start: 9 @45210 has 1 MA's), (Start: 12 @45216 has 1 MA's), (17, 45240), (18, 45258), (25, 45390), (28, 45405), (29, 45408), (30, 45411), (36, 45528), (37, 45546), (67, 45759), (98, 45975), (100, 45987), (102, 45993), (107, 46029), (113, 46077), (123, 46125),

Gene: Tomaszewski_62 Start: 43460, Stop: 44428, Start Num: 6

Candidate Starts for Tomaszewski_62:

(Start: 6 @43460 has 126 MA's), (Start: 9 @43499 has 1 MA's), (Start: 12 @43505 has 1 MA's), (17, 43529), (18, 43547), (25, 43679), (28, 43694), (29, 43697), (30, 43700), (36, 43817), (37, 43835), (67, 44048), (98, 44264), (100, 44276), (102, 44282), (107, 44318), (113, 44366), (123, 44414),

Gene: Toto_65 Start: 44548, Stop: 45516, Start Num: 6

Candidate Starts for Toto_65:

(Start: 6 @44548 has 126 MA's), (Start: 9 @44587 has 1 MA's), (Start: 12 @44593 has 1 MA's), (17, 44617), (18, 44635), (25, 44767), (28, 44782), (29, 44785), (30, 44788), (36, 44905), (37, 44923), (67, 45136), (98, 45352), (100, 45364), (102, 45370), (107, 45406), (113, 45454), (123, 45502),

Gene: Tourach_60 Start: 43581, Stop: 44513, Start Num: 10

Candidate Starts for Tourach_60:

(Start: 10 @43581 has 44 MA's), (30, 43779), (56, 44076), (65, 44115), (67, 44127), (81, 44190), (84, 44232), (85, 44238), (96, 44337), (97, 44340), (101, 44358), (109, 44409), (110, 44421), (113, 44445), (121, 44487),

Gene: Traaww1_63 Start: 43729, Stop: 44697, Start Num: 6

Candidate Starts for Traaww1_63:

(Start: 6 @43729 has 126 MA's), (Start: 9 @43768 has 1 MA's), (Start: 12 @43774 has 1 MA's), (17, 43798), (18, 43816), (25, 43948), (28, 43963), (29, 43966), (30, 43969), (36, 44086), (37, 44104), (67, 44317), (98, 44533), (100, 44545), (102, 44551), (107, 44587), (113, 44635), (123, 44683),

Gene: Trax_57 Start: 39086, Stop: 39961, Start Num: 13

Candidate Starts for Trax_57:

(Start: 13 @39086 has 7 MA's), (21, 39194), (24, 39236), (29, 39272), (45, 39497), (48, 39512), (54, 39551), (56, 39572), (69, 39629), (70, 39644), (82, 39659), (84, 39692), (87, 39731), (88, 39734), (94, 39779), (95, 39791), (96, 39797), (97, 39800), (98, 39803), (107, 39857), (108, 39863), (109, 39869), (112, 39896), (113, 39905),

Gene: Tuco_68 Start: 45056, Stop: 46024, Start Num: 6

Candidate Starts for Tuco_68:

(Start: 6 @45056 has 126 MA's), (Start: 9 @45095 has 1 MA's), (Start: 12 @45101 has 1 MA's), (17, 45125), (18, 45143), (25, 45275), (28, 45290), (29, 45293), (30, 45296), (36, 45413), (37, 45431), (67, 45644), (98, 45860), (100, 45872), (102, 45878), (107, 45914), (113, 45962), (123, 46010),

Gene: TyDawg_56 Start: 39492, Stop: 40352, Start Num: 19

Candidate Starts for TyDawg_56:

(Start: 19 @39492 has 14 MA's), (Start: 26 @39606 has 5 MA's), (53, 39864), (56, 39900), (60, 39918), (62, 39924), (64, 39930), (68, 39951), (81, 40008), (84, 40047), (85, 40053), (89, 40104), (103, 40200), (110, 40251), (112, 40266), (124, 40341), (125, 40344),

Gene: Tyson_59 Start: 41784, Stop: 42716, Start Num: 10

Candidate Starts for Tyson_59:

(Start: 10 @41784 has 44 MA's), (30, 41982), (56, 42279), (57, 42285), (63, 42306), (65, 42318), (67, 42330), (69, 42336), (78, 42384), (80, 42390), (84, 42435), (85, 42441), (86, 42453), (96, 42540), (97, 42543), (98, 42546), (101, 42561), (109, 42612), (113, 42648), (121, 42690),

Gene: UPIE_59 Start: 41776, Stop: 42708, Start Num: 10

Candidate Starts for UPIE_59:

(1, 41536), (2, 41539), (4, 41611), (7, 41749), (Start: 10 @41776 has 44 MA's), (30, 41974), (56, 42271), (63, 42298), (65, 42310), (67, 42322), (78, 42376), (80, 42382), (84, 42427), (85, 42433), (86, 42445), (96, 42532), (97, 42535), (98, 42538), (101, 42553), (106, 42586), (108, 42598), (109, 42604), (113, 42640), (118, 42673), (121, 42682),

Gene: Ukulele_62 Start: 43442, Stop: 44410, Start Num: 6

Candidate Starts for Ukulele_62:

(Start: 6 @43442 has 126 MA's), (Start: 9 @43481 has 1 MA's), (Start: 12 @43487 has 1 MA's), (17, 43511), (18, 43529), (25, 43661), (28, 43676), (29, 43679), (30, 43682), (36, 43799), (37, 43817), (67, 44030), (98, 44246), (100, 44258), (102, 44264), (107, 44300), (113, 44348), (123, 44396),

Gene: VasuNzinga_65 Start: 36563, Stop: 37516, Start Num: 11

Candidate Starts for VasuNzinga_65:

(3, 36395), (Start: 11 @36563 has 16 MA's), (29, 36761), (34, 36854), (38, 36902), (39, 36932), (46, 36983), (52, 37016), (58, 37055), (73, 37145), (78, 37178), (79, 37181), (84, 37229), (86, 37247), (87, 37268), (96, 37334), (99, 37346), (115, 37454),

Gene: Vetrrix_61 Start: 43536, Stop: 44468, Start Num: 10

Candidate Starts for Vetrrix_61:

(Start: 10 @43536 has 44 MA's), (30, 43734), (56, 44031), (65, 44070), (67, 44082), (69, 44088), (81, 44145), (84, 44187), (85, 44193), (96, 44292), (97, 44295), (101, 44313), (106, 44346), (107, 44352), (109, 44364), (113, 44400), (121, 44442),

Gene: Wamburgxpress_59 Start: 41755, Stop: 42738, Start Num: 6

Candidate Starts for Wamburgxpress_59:

(Start: 6 @41755 has 126 MA's), (Start: 10 @41797 has 44 MA's), (15, 41818), (30, 42004), (56, 42301), (57, 42307), (63, 42328), (65, 42340), (67, 42352), (78, 42406), (80, 42412), (84, 42457), (85, 42463), (86, 42475), (96, 42562), (97, 42565), (98, 42568), (101, 42583), (106, 42616), (108, 42628), (109, 42634), (113, 42670), (118, 42703), (121, 42712),

Gene: Wiggin_69 Start: 44130, Stop: 45098, Start Num: 6

Candidate Starts for Wiggin_69:

(Start: 6 @44130 has 126 MA's), (Start: 9 @44169 has 1 MA's), (Start: 12 @44175 has 1 MA's), (17, 44199), (18, 44217), (25, 44349), (28, 44364), (29, 44367), (30, 44370), (36, 44487), (37, 44505), (67, 44718), (98, 44934), (100, 44946), (102, 44952), (107, 44988), (113, 45036), (123, 45084),

Gene: Wigglewiggles_61 Start: 43556, Stop: 44488, Start Num: 10

Candidate Starts for Wigglewiggles_61:

(Start: 10 @43556 has 44 MA's), (56, 44051), (65, 44090), (67, 44102), (69, 44108), (81, 44165), (84, 44207), (85, 44213), (96, 44312), (97, 44315), (101, 44333), (106, 44366), (107, 44372), (109, 44384), (113, 44420), (121, 44462),

Gene: Wildcat_67 Start: 44523, Stop: 45428, Start Num: 16

Candidate Starts for Wildcat_67:

(Start: 16 @44523 has 6 MA's), (25, 44676), (27, 44685), (28, 44691), (32, 44721), (33, 44733), (36, 44784), (45, 44892), (49, 44913), (51, 44928), (57, 44976), (71, 45042), (74, 45051), (83, 45108), (103, 45276), (105, 45294), (114, 45360), (116, 45366), (117, 45381), (124, 45417),

Gene: Wilder_62 Start: 43502, Stop: 44434, Start Num: 10

Candidate Starts for Wilder_62:

(Start: 10 @43502 has 44 MA's), (30, 43700), (56, 43997), (65, 44036), (67, 44048), (69, 44054), (81, 44111), (84, 44153), (85, 44159), (96, 44258), (97, 44261), (101, 44279), (106, 44312), (107, 44318), (109, 44330), (113, 44366), (121, 44408),

Gene: Willez_62 Start: 42326, Stop: 43294, Start Num: 6

Candidate Starts for Willez_62:

(Start: 6 @42326 has 126 MA's), (Start: 9 @42365 has 1 MA's), (Start: 12 @42371 has 1 MA's), (17, 42395), (18, 42413), (25, 42545), (28, 42560), (29, 42563), (30, 42566), (36, 42683), (37, 42701), (67, 42914), (98, 43130), (100, 43142), (102, 43148), (107, 43184), (113, 43232), (123, 43280),

Gene: Winky_61 Start: 43496, Stop: 44428, Start Num: 10

Candidate Starts for Winky_61:

(Start: 10 @43496 has 44 MA's), (30, 43694), (56, 43991), (65, 44030), (67, 44042), (69, 44048), (81, 44105), (84, 44147), (85, 44153), (96, 44252), (97, 44255), (101, 44273), (106, 44306), (107, 44312), (109, 44324), (113, 44360), (121, 44402),

Gene: Wyatt2_60 Start: 41782, Stop: 42714, Start Num: 10

Candidate Starts for Wyatt2_60:

(Start: 10 @41782 has 44 MA's), (30, 41980), (56, 42277), (57, 42283), (63, 42304), (65, 42316), (67, 42328), (69, 42334), (78, 42382), (80, 42388), (84, 42433), (85, 42439), (86, 42451), (96, 42538), (97, 42541), (98, 42544), (101, 42559), (109, 42610), (113, 42646), (121, 42688),

Gene: Xandras_66 Start: 43541, Stop: 44509, Start Num: 6

Candidate Starts for Xandras_66:

(Start: 6 @43541 has 126 MA's), (Start: 9 @43580 has 1 MA's), (Start: 12 @43586 has 1 MA's), (17, 43610), (18, 43628), (25, 43760), (28, 43775), (29, 43778), (30, 43781), (36, 43898), (37, 43916), (67, 44129), (98, 44345), (100, 44357), (102, 44363), (107, 44399), (113, 44447), (123, 44495),

Gene: YassJohnny_64 Start: 43499, Stop: 44467, Start Num: 6

Candidate Starts for YassJohnny_64:

(Start: 6 @43499 has 126 MA's), (Start: 9 @43538 has 1 MA's), (Start: 12 @43544 has 1 MA's), (17, 43568), (18, 43586), (25, 43718), (28, 43733), (29, 43736), (30, 43739), (36, 43856), (37, 43874), (67, 44087), (98, 44303), (100, 44315), (102, 44321), (107, 44357), (113, 44405), (123, 44453),

Gene: Youngblood_70 Start: 45011, Stop: 45979, Start Num: 6

Candidate Starts for Youngblood_70:

(Start: 6 @45011 has 126 MA's), (Start: 9 @45050 has 1 MA's), (Start: 12 @45056 has 1 MA's), (17, 45080), (18, 45098), (25, 45230), (28, 45245), (29, 45248), (30, 45251), (36, 45368), (37, 45386), (67, 45599), (98, 45815), (100, 45827), (102, 45833), (107, 45869), (113, 45917), (123, 45965),

Gene: Zakai_62 Start: 43822, Stop: 44754, Start Num: 10

Candidate Starts for Zakai_62:

(Start: 10 @43822 has 44 MA's), (30, 44020), (56, 44317), (65, 44356), (67, 44368), (69, 44374), (81, 44431), (84, 44473), (85, 44479), (96, 44578), (97, 44581), (101, 44599), (106, 44632), (107, 44638), (109, 44650), (113, 44686), (121, 44728),

Gene: Zaria_60 Start: 41867, Stop: 42850, Start Num: 6

Candidate Starts for Zaria_60:

(Start: 6 @41867 has 126 MA's), (Start: 10 @41909 has 44 MA's), (15, 41930), (30, 42116), (56, 42413), (57, 42419), (63, 42440), (65, 42452), (67, 42464), (78, 42518), (80, 42524), (84, 42569), (85, 42575), (86, 42587), (96, 42674), (97, 42677), (98, 42680), (101, 42695), (106, 42728), (108, 42740), (109, 42746), (113, 42782), (118, 42815), (121, 42824),

Gene: ZhongYanYuan_59 Start: 43391, Stop: 44323, Start Num: 10

Candidate Starts for ZhongYanYuan_59:

(Start: 10 @43391 has 44 MA's), (30, 43589), (56, 43886), (65, 43925), (67, 43937), (80, 43997), (81, 44000), (84, 44042), (86, 44060), (87, 44081), (96, 44147), (97, 44150), (101, 44168), (109, 44219), (110, 44231), (113, 44255), (121, 44297),

Gene: xkcd_70 Start: 45201, Stop: 46169, Start Num: 6

Candidate Starts for xkcd_70:

(Start: 6 @45201 has 126 MA's), (Start: 9 @45240 has 1 MA's), (Start: 12 @45246 has 1 MA's), (17, 45270), (18, 45288), (25, 45420), (28, 45435), (29, 45438), (30, 45441), (36, 45558), (37, 45576), (67, 45789), (98, 46005), (100, 46017), (102, 46023), (107, 46059), (113, 46107), (123, 46155),