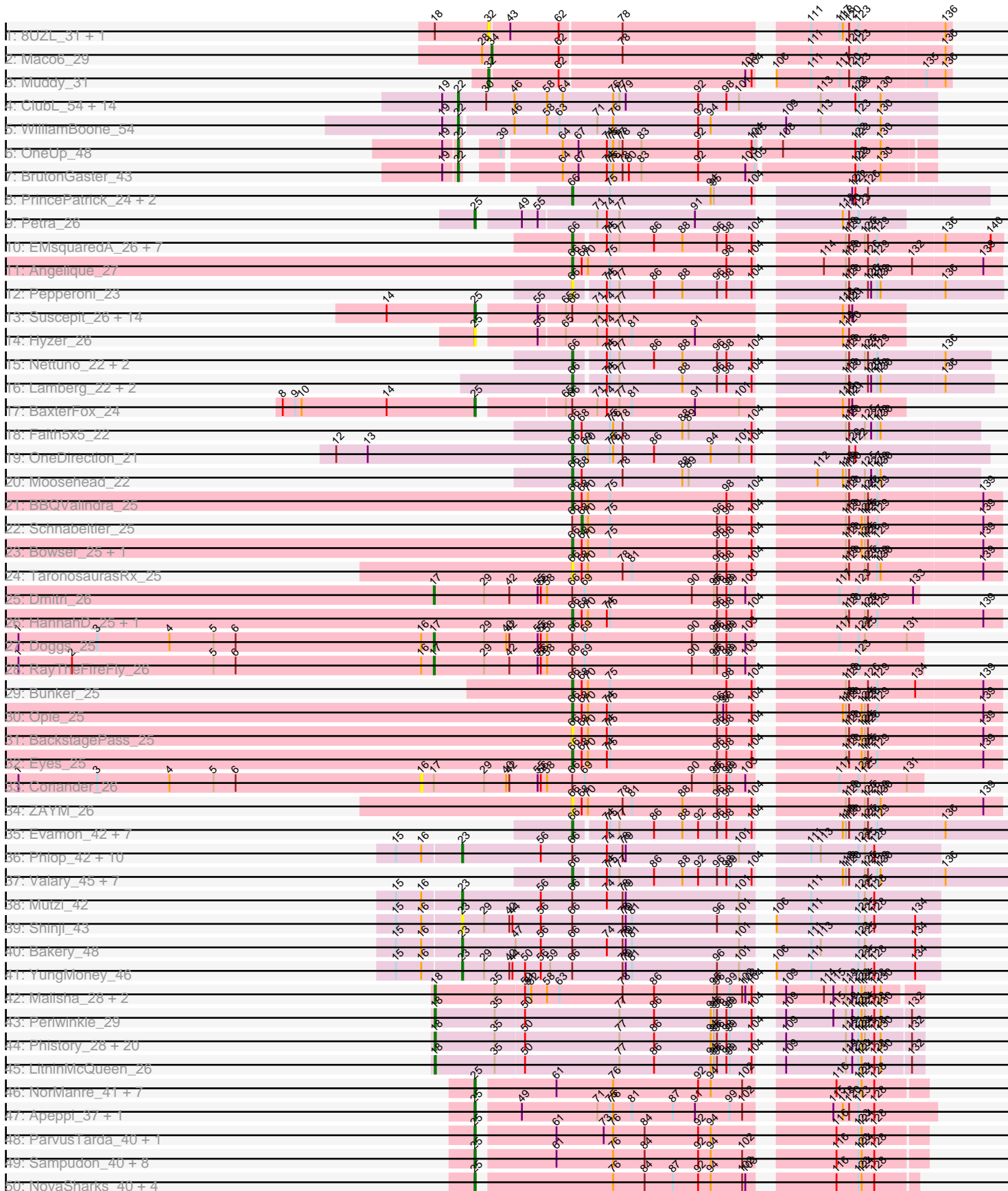
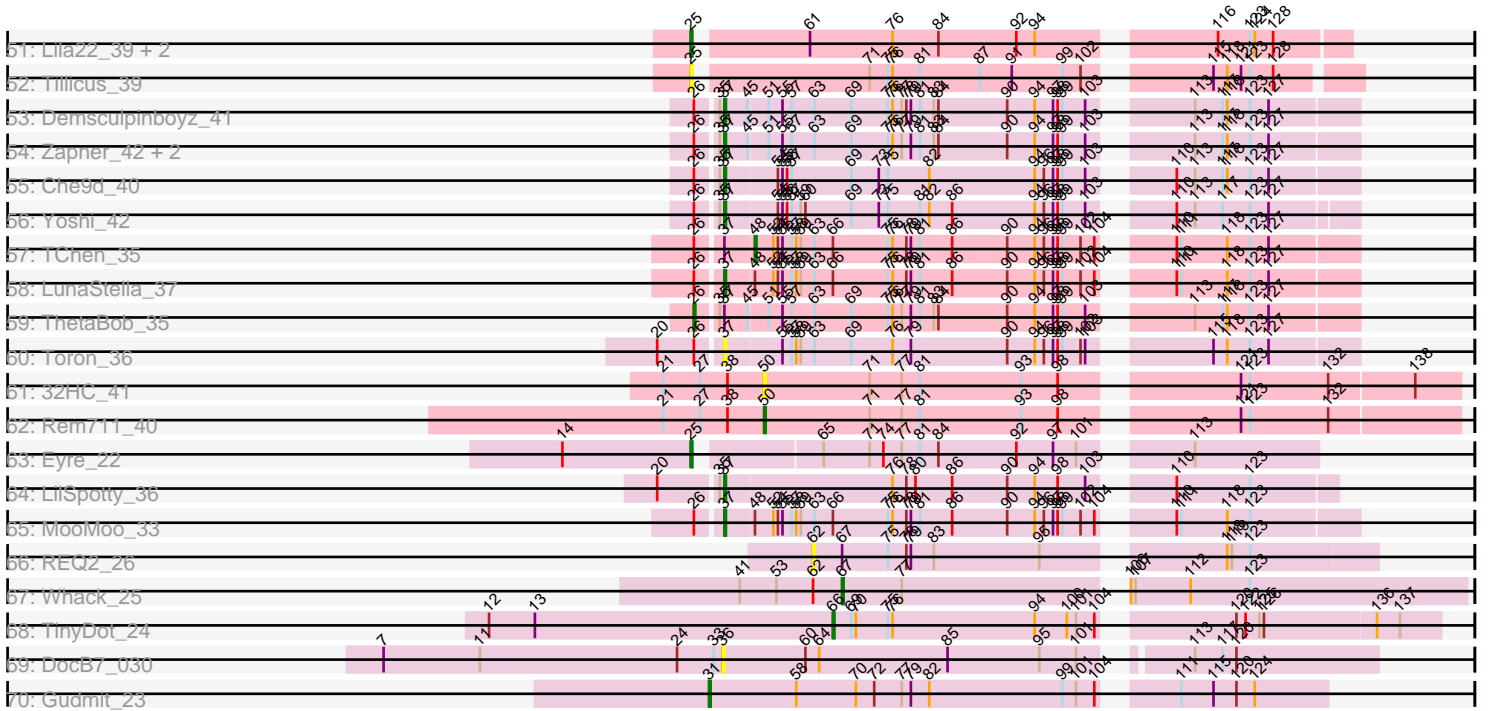


Pham 195433



Pham 195433



Note: Tracks are now grouped by subcluster and scaled. Switching in subcluster is indicated by changes in track color. Track scale is now set by default to display the region 30 bp upstream of start 1 to 30 bp downstream of the last possible start. If this default region is judged to be packed too tightly with annotated starts, the track will be further scaled to only show that region of the ORF with annotated starts. This action will be indicated by adding "Zoomed" to the title. For starts, yellow indicates the location of called starts comprised solely of Glimmer/GeneMark auto-annotations, green indicates the location of called starts with at least 1 manual gene annotation.

Pham 195433 Report

This analysis was run 12/09/24 on database version 580.

Pham number 195433 has 185 members, 23 are drafts.

Phages represented in each track:

- Track 1 : 8UZL_31, FF47_31
- Track 2 : Maco6_29
- Track 3 : Muddy_31
- Track 4 : ClubL_54, Geeche_53, Engineer_56, Miskis_56, Bachita_56, Abscondus_53, Dusty_52, PhinkBoden_54, Cucurbita_56, Lozinak_55, Culver_54, Smoothie_56, Norvs_55, Aphelion_54, Toniann_54
- Track 5 : WilliamBoone_54
- Track 6 : OneUp_48
- Track 7 : BrutonGaster_43
- Track 8 : PrincePatrick_24, William_25, Fairfaxidum_24
- Track 9 : Petra_26
- Track 10 : EMSquaredA_26, EnalisNailo_26, Pollux_26, Marteena_26, BritBrat_26, Bradissa_26, Lilas_26, Floral_26
- Track 11 : Angelique_27
- Track 12 : Pepperoni_23
- Track 13 : Suscepit_26, Agueybana_25, BoyNamedSue_25, Zameen_26, AlumE_25, Neobush_26, Antonio_26, PantheRoc_25, Maridalia_25, Eudoria_26, Trumpet_26, Tayonia_26, Manasvini_26, Yeezy_26, Kita_26
- Track 14 : Hyzer_26
- Track 15 : Nettuno_22, Matteo_22, Pickett_22
- Track 16 : Lamberg_22, Lton_22, EdnaMode_22
- Track 17 : BaxterFox_24
- Track 18 : Faith5x5_22
- Track 19 : OneDirection_21
- Track 20 : Moosehead_22
- Track 21 : BBQValindra_25
- Track 22 : Schnabeltier_25
- Track 23 : Bowser_25, MagicMan_25
- Track 24 : TaronosaurusRx_25
- Track 25 : Dmitri_26
- Track 26 : HannahD_25, GEazy_25
- Track 27 : Doggs_25
- Track 28 : RayTheFireFly_26
- Track 29 : Bunker_25
- Track 30 : Opie_25
- Track 31 : BackstagePass_25
- Track 32 : Eyes_25

- Track 33 : Coriander_26
- Track 34 : ZAYM_26
- Track 35 : Evamon_42, Portcullis_44, Jambalaya_43, Halo3_43, Twister6_45, Salvador_42, Savbucketdawg_43, Danyall_45
- Track 36 : Phlop_42, Fugax_46, Togo_42, Barb_45, Fireball_44, PullumCavea_42, PinkCoffee_45, ClamChowder_45, SmokingBunny_43, Nubi_43, TillyBobJoe_43
- Track 37 : Valary_45, KimmyK_44, Wizard_42, Arri_46, VanDeWege_46, Gezellig_44, RogerDodger_46, CoveyB_46
- Track 38 : Mutzi_42
- Track 39 : Shinji_43
- Track 40 : Bakery_48
- Track 41 : YungMoney_46
- Track 42 : Malisha_28, Spooky_27, Squiddly_29
- Track 43 : Periwinkle_29
- Track 44 : Phistory_28, Kamaru_27, Leroy_27, Lutum_27, Getalong_28, Horus_27, Phabuloso_26, CheeseTouch_27, BearBQ_26, Kenna_26, Frickyeah_26, Holliday_27, Apricot_26, Budski_27, BENtherdunthat_27, Whitney_28, Asapag_27, Crater_25, Kuwabara_26, Birdsong_26, MortyNRick_26
- Track 45 : LitninMcQueen_26
- Track 46 : NorManre_41, GOATification_41, Fulcrum_41, Gibbin_41, DoobyDoo_39, DaviePasture_40, Patos_41, Zany_39
- Track 47 : Apeppi_37, LuckyLeo_39
- Track 48 : ParvusTarda_40, BirthdayBoy_41
- Track 49 : Sampudon_40, Jalebi_39, MoiGyank_42, Yikes_41, OtterstedtS21_40, Ranch_40, GretelLyn_40, Sadboi_41, Lambo_40
- Track 50 : NovaSharks_40, Jamemuya19_40, Alyssamiracle_41, Rumi_40, Genamy16_41
- Track 51 : Lila22_39, Erutan_40, Wojtek_39
- Track 52 : Tillicus_39
- Track 53 : Demsculpinboyz_41
- Track 54 : Zapner_42, Jabbawokkie_43, Avani_40
- Track 55 : Che9d_40
- Track 56 : Yoshi_42
- Track 57 : TChen_35
- Track 58 : LunaStella_37
- Track 59 : ThetaBob_35
- Track 60 : Toron_36
- Track 61 : 32HC_41
- Track 62 : Rem711_40
- Track 63 : Eyre_22
- Track 64 : LilSpotty_36
- Track 65 : MooMoo_33
- Track 66 : REQ2_26
- Track 67 : Whack_25
- Track 68 : TinyDot_24
- Track 69 : DocB7_030
- Track 70 : Gudmit_23

Summary of Final Annotations (See graph section above for start numbers):

The start number called the most often in the published annotations is 25, it was called in 46 of the 162 non-draft genes in the pham.

Genes that call this "Most Annotated" start:

- Agueybana_25, AlumE_25, Alyssamiracle_41, Antonio_26, Apeppi_37, BaxterFox_24, BirthdayBoy_41, BoyNamedSue_25, DaviePasture_40, DoobyDoo_39, Erutan_40, Eudoria_26, Eyre_22, Fulcrum_41, GOATification_41, Genamy16_41, Gibbin_41, GretelLyn_40, Hyzer_26, Jalebi_39, Jamemuya19_40, Kita_26, Lambo_40, Lila22_39, LuckyLeo_39, Manasvini_26, Maridalia_25, MoiGyank_42, Neobush_26, NorManre_41, NovaSharks_40, OtterstedtS21_40, PantheRoc_25, ParvusTarda_40, Patos_41, Petra_26, Ranch_40, Rumi_40, Sadboi_41, Sampudon_40, Suscepit_26, Tayonia_26, Tillicus_39, Trumpet_26, Wojtek_39, Yeezy_26, Yikes_41, Zameen_26, Zany_39,

Genes that have the "Most Annotated" start but do not call it:

-

Genes that do not have the "Most Annotated" start:

- 32HC_41, 8UZL_31, Abscondus_53, Angelique_27, Aphelion_54, Apricot_26, Arri_46, Asapag_27, Avani_40, BBQValindra_25, BENtherdunthat_27, Bachita_56, BackstagePass_25, Bakery_48, Barb_45, BearBQ_26, Birdsong_26, Bowser_25, Bradissa_26, BritBrat_26, BrutonGaster_43, Budski_27, Bunker_25, Che9d_40, CheeseTouch_27, ClamChowder_45, ClubL_54, Coriander_26, CoveyB_46, Crater_25, Cucurbita_56, Culver_54, Danyall_45, Demsculpinboyz_41, Dmitri_26, DocB7_030, Doggs_25, Dusty_52, EMsquaredA_26, EdnaMode_22, EnalisNailo_26, Engineer_56, Evamon_42, Eyes_25, FF47_31, Fairfaxidum_24, Faith5x5_22, Fireball_44, Floral_26, Frickyeah_26, Fugax_46, GEazy_25, Geeche_53, Getalong_28, Gezellig_44, Gudmit_23, Halo3_43, HannahD_25, Holliday_27, Horus_27, Jabbawokkie_43, Jambalaya_43, Kamaru_27, Kenna_26, KimmyK_44, Kuwabara_26, Lamberg_22, Leroy_27, LilSpotty_36, Lilas_26, LitninMcQueen_26, Lozinak_55, Lton_22, LunaStella_37, Lutum_27, Maco6_29, MagicMan_25, Malisha_28, Marteena_26, Matteo_22, Miskis_56, MooMoo_33, Moosehead_22, MortyNRick_26, Muddy_31, Mutzi_42, Nettuno_22, Norvs_55, Nubi_43, OneDirection_21, OneUp_48, Opie_25, Pepperoni_23, Periwinkle_29, Phabuloso_26, PhinkBoden_54, Phistory_28, Phlop_42, Pickett_22, PinkCoffee_45, Pollux_26, Portcullis_44, PrincePatrick_24, PullumCavea_42, REQ2_26, RayTheFireFly_26, Rem711_40, RogerDodger_46, Salvador_42, Savbucketdawg_43, Schnabeltier_25, Shinji_43, SmokingBunny_43, Smoothie_56, Spooky_27, Squiddly_29, TChen_35, TaronosaurusRx_25, ThetaBob_35, TillyBobJoe_43, TinyDot_24, Togo_42, Toniann_54, Toron_36, Twister6_45, Valary_45, VanDeWege_46, Whack_25, Whitney_28, WilliamBoone_54, William_25, Wizard_42, Yoshi_42, YungMoney_46, ZAYM_26, Zapner_42,

Summary by start number:

Start 16:

- Found in 18 of 185 (9.7%) of genes in pham
- No Manual Annotations of this start.
- Called 5.6% of time when present
- Phage (with cluster) where this start called: Coriander_26 (DB),

Start 17:

- Found in 4 of 185 (2.2%) of genes in pham

- Manual Annotations of this start: 3 of 162
- Called 75.0% of time when present
- Phage (with cluster) where this start called: Dmitri_26 (DB), Doggs_25 (DB), RayTheFireFly_26 (DB),

Start 18:

- Found in 28 of 185 (15.1%) of genes in pham
- Manual Annotations of this start: 24 of 162
- Called 92.9% of time when present
- Phage (with cluster) where this start called: Apricot_26 (DN3), Asapag_27 (DN1), BENTherdunthat_27 (DN1), BearBQ_26 (DN), Birdsong_26 (DN), Budski_27 (DN), CheeseTouch_27 (DN1), Crater_25 (DN3), Frickyeah_26 (DN1), Getalong_28 (DN1), Holliday_27 (DN1), Horus_27 (DN1), Kamaru_27 (DN1), Kenna_26 (DN1), Kuwabara_26 (DN4), Leroy_27 (DN1), LitninMcQueen_26 (DN1), Lutum_27 (DN1), Malisha_28 (DN), MortyNRick_26 (DN), Periwinkle_29 (DN1), Phabuloso_26 (DN1), Phistory_28 (DN1), Spooky_27 (DN2), Squiddly_29 (DN2), Whitney_28 (DN1),

Start 22:

- Found in 18 of 185 (9.7%) of genes in pham
- Manual Annotations of this start: 14 of 162
- Called 100.0% of time when present
- Phage (with cluster) where this start called: Abscondus_53 (CQ1), Aphelion_54 (CQ1), Bachita_56 (CQ1), BrutonGaster_43 (CQ2), ClubL_54 (CQ1), Cucurbita_56 (CQ1), Culver_54 (CQ1), Dusty_52 (CQ1), Engineer_56 (CQ1), Geeche_53 (CQ1), Lozinak_55 (CQ1), Miskis_56 (CQ1), Norvs_55 (CQ1), OneUp_48 (CQ2), PhinkBoden_54 (CQ1), Smoothie_56 (CQ1), Toniann_54 (CQ1), WilliamBoone_54 (CQ1),

Start 23:

- Found in 15 of 185 (8.1%) of genes in pham
- Manual Annotations of this start: 14 of 162
- Called 100.0% of time when present
- Phage (with cluster) where this start called: Bakery_48 (DC1), Barb_45 (DC1), ClamChowder_45 (DC1), Fireball_44 (DC1), Fugax_46 (DC1), Mutzi_42 (DC1), Nubi_43 (DC1), Phlop_42 (DC1), PinkCoffee_45 (DC1), PullumCavea_42 (DC1), Shinji_43 (DC1), SmokingBunny_43 (DC1), TillyBobJoe_43 (DC1), Togo_42 (DC1), YungMoney_46 (DC1),

Start 25:

- Found in 49 of 185 (26.5%) of genes in pham
- Manual Annotations of this start: 46 of 162
- Called 100.0% of time when present
- Phage (with cluster) where this start called: Agueybana_25 (CZ1), AlumE_25 (CZ1), Alyssamiracle_41 (DV), Antonio_26 (CZ1), Apeppi_37 (DV), BaxterFox_24 (CZ3), BirthdayBoy_41 (DV), BoyNamedSue_25 (CZ1), DaviePasture_40 (DV), DoobyDoo_39 (DV), Erutan_40 (DV), Eudoria_26 (CZ1), Eyre_22 (singleton), Fulcrum_41 (DV), GOATification_41 (DV), Genamy16_41 (DV), Gibbin_41 (DV), GretellLyn_40 (DV), Hyzer_26 (CZ1), Jalebi_39 (DV), Jamemuya19_40 (DV), Kita_26 (CZ1), Lambo_40 (DV), Lila22_39 (DV), LuckyLeo_39 (DV), Manasvini_26 (CZ1), Maridalia_25 (CZ1), MoiGyank_42 (DV), Neobush_26 (CZ1), NorManre_41 (DV), NovaSharks_40 (DV), OtterstedtS21_40 (DV), PantheRoc_25 (CZ3), ParvusTarda_40 (DV), Patos_41 (DV), Petra_26 (CV), Ranch_40 (DV), Rumi_40 (DV), Sadboi_41 (DV), Sampudon_40 (DV), Suscepit_26 (CZ1), Tayonia_26 (CZ1),

Tillicus_39 (DV), Trumpet_26 (CZ1), Wojtek_39 (DV), Yeezy_26 (CZ3), Yikes_41 (DV), Zameen_26 (CZ1), Zany_39 (DV),

Start 26:

- Found in 11 of 185 (5.9%) of genes in pham
- Manual Annotations of this start: 1 of 162
- Called 9.1% of time when present
- Phage (with cluster) where this start called: ThetaBob_35 (F4),

Start 31:

- Found in 1 of 185 (0.5%) of genes in pham
- Manual Annotations of this start: 1 of 162
- Called 100.0% of time when present
- Phage (with cluster) where this start called: Gudmit_23 (singleton),

Start 32:

- Found in 3 of 185 (1.6%) of genes in pham
- Manual Annotations of this start: 1 of 162
- Called 100.0% of time when present
- Phage (with cluster) where this start called: 8UZL_31 (AB), FF47_31 (AB), Muddy_31 (AB),

Start 34:

- Found in 1 of 185 (0.5%) of genes in pham
- Manual Annotations of this start: 1 of 162
- Called 100.0% of time when present
- Phage (with cluster) where this start called: Maco6_29 (AB),

Start 36:

- Found in 1 of 185 (0.5%) of genes in pham
- No Manual Annotations of this start.
- Called 100.0% of time when present
- Phage (with cluster) where this start called: DocB7_030 (singleton),

Start 37:

- Found in 12 of 185 (6.5%) of genes in pham
- Manual Annotations of this start: 9 of 162
- Called 83.3% of time when present
- Phage (with cluster) where this start called: Avani_40 (F2), Che9d_40 (F2), Demsculpinboyz_41 (F2), Jabbawokkie_43 (F2), LilSpotty_36 (singleton), LunaStella_37 (F4), MooMoo_33 (singleton), Toron_36 (F6), Yoshi_42 (F2), Zapner_42 (F2),

Start 48:

- Found in 3 of 185 (1.6%) of genes in pham
- Manual Annotations of this start: 1 of 162
- Called 33.3% of time when present
- Phage (with cluster) where this start called: TChen_35 (F4),

Start 50:

- Found in 29 of 185 (15.7%) of genes in pham
- Manual Annotations of this start: 1 of 162
- Called 6.9% of time when present

- Phage (with cluster) where this start called: 32HC_41 (Z), Rem711_40 (Z),

Start 62:

- Found in 6 of 185 (3.2%) of genes in pham
- No Manual Annotations of this start.
- Called 16.7% of time when present
- Phage (with cluster) where this start called: REQ2_26 (singleton),

Start 66:

- Found in 89 of 185 (48.1%) of genes in pham
- Manual Annotations of this start: 44 of 162
- Called 56.2% of time when present
- Phage (with cluster) where this start called: Angelique_27 (CY1), Arri_46 (DC1), BBQValindra_25 (DB), BackstagePass_25 (DB), Bowser_25 (DB), Bradissa_26 (CY1), BritBrat_26 (CY2), Bunker_25 (DB), CoveyB_46 (DC1), Danyall_45 (DC1), EMSquaredA_26 (CY1), EdnaMode_22 (CZ2), EnalisNailo_26 (CY1), Evamon_42 (DC1), Eyes_25 (DB), Fairfaxidum_24 (CV), Faith5x5_22 (CZ6), Floral_26 (CY1), GEazy_25 (DB), Gezellig_44 (DC1), Halo3_43 (DC1), HannahD_25 (DB), Jambalaya_43 (DC1), KimmyK_44 (DC1), Lamberg_22 (CZ2), Lilas_26 (CY1), Lton_22 (CZ), MagicMan_25 (DB), Marteena_26 (CY1), Matteo_22 (CZ2), Moosehead_22 (CZ6), Nettuno_22 (CZ2), OneDirection_21 (CZ6), Opie_25 (DB), Pepperoni_23 (CZ), Pickett_22 (CZ2), Pollux_26 (CY1), Portcullis_44 (DC1), PrincePatrick_24 (CV), RogerDodger_46 (DC1), Salvador_42 (DC1), Savbucketdawg_43 (DC1), TaronosaurusRx_25 (DB), TinyDot_24 (singleton), Twister6_45 (DC1), Valary_45 (DC1), VanDeWege_46 (DC1), William_25 (CV), Wizard_42 (DC1), ZAYM_26 (DB),

Start 67:

- Found in 4 of 185 (2.2%) of genes in pham
- Manual Annotations of this start: 1 of 162
- Called 25.0% of time when present
- Phage (with cluster) where this start called: Whack_25 (singleton),

Start 68:

- Found in 15 of 185 (8.1%) of genes in pham
- Manual Annotations of this start: 1 of 162
- Called 6.7% of time when present
- Phage (with cluster) where this start called: Schnabeltier_25 (DB),

Summary by clusters:

There are 24 clusters represented in this pham: DN, singleton, CZ2, CZ3, CZ1, CZ6, DV, DN4, DN1, DN3, DN2, CQ2, CQ1, CY2, CY1, AB, DB, CZ, Z, CV, DC1, F2, F4, F6,

Info for manual annotations of cluster AB:

- Start number 32 was manually annotated 1 time for cluster AB.
- Start number 34 was manually annotated 1 time for cluster AB.

Info for manual annotations of cluster CQ1:

- Start number 22 was manually annotated 12 times for cluster CQ1.

Info for manual annotations of cluster CQ2:

- Start number 22 was manually annotated 2 times for cluster CQ2.

Info for manual annotations of cluster CV:

- Start number 25 was manually annotated 1 time for cluster CV.
- Start number 66 was manually annotated 3 times for cluster CV.

Info for manual annotations of cluster CY1:

- Start number 66 was manually annotated 8 times for cluster CY1.

Info for manual annotations of cluster CY2:

- Start number 66 was manually annotated 1 time for cluster CY2.

Info for manual annotations of cluster CZ:

- Start number 66 was manually annotated 1 time for cluster CZ.

Info for manual annotations of cluster CZ1:

- Start number 25 was manually annotated 13 times for cluster CZ1.

Info for manual annotations of cluster CZ2:

- Start number 66 was manually annotated 5 times for cluster CZ2.

Info for manual annotations of cluster CZ3:

- Start number 25 was manually annotated 3 times for cluster CZ3.

Info for manual annotations of cluster CZ6:

- Start number 66 was manually annotated 3 times for cluster CZ6.

Info for manual annotations of cluster DB:

- Start number 17 was manually annotated 3 times for cluster DB.
- Start number 66 was manually annotated 8 times for cluster DB.
- Start number 68 was manually annotated 1 time for cluster DB.

Info for manual annotations of cluster DC1:

- Start number 23 was manually annotated 14 times for cluster DC1.
- Start number 66 was manually annotated 14 times for cluster DC1.

Info for manual annotations of cluster DN:

- Start number 18 was manually annotated 4 times for cluster DN.

Info for manual annotations of cluster DN1:

- Start number 18 was manually annotated 15 times for cluster DN1.

Info for manual annotations of cluster DN2:

- Start number 18 was manually annotated 2 times for cluster DN2.

Info for manual annotations of cluster DN3:

- Start number 18 was manually annotated 2 times for cluster DN3.

Info for manual annotations of cluster DN4:

- Start number 18 was manually annotated 1 time for cluster DN4.

Info for manual annotations of cluster DV:

- Start number 25 was manually annotated 28 times for cluster DV.

Info for manual annotations of cluster F2:

- Start number 37 was manually annotated 6 times for cluster F2.

Info for manual annotations of cluster F4:

- Start number 26 was manually annotated 1 time for cluster F4.
- Start number 37 was manually annotated 1 time for cluster F4.
- Start number 48 was manually annotated 1 time for cluster F4.

Info for manual annotations of cluster Z:

- Start number 50 was manually annotated 1 time for cluster Z.

Gene Information:

Gene: 32HC_41 Start: 30730, Stop: 31161, Start Num: 50

Candidate Starts for 32HC_41:

(21, 30664), (27, 30688), (38, 30706), (Start: 50 @30730 has 1 MA's), (71, 30799), (77, 30820), (81, 30832), (93, 30898), (98, 30922), (121, 31021), (123, 31027), (132, 31078), (138, 31132),

Gene: 8UZL_31 Start: 24782, Stop: 25192, Start Num: 32

Candidate Starts for 8UZL_31:

(Start: 18 @24731 has 24 MA's), (Start: 32 @24782 has 1 MA's), (43, 24800), (62, 24845), (78, 24902), (111, 25061), (117, 25088), (118, 25091), (120, 25097), (123, 25106), (136, 25187),

Gene: Abscondus_53 Start: 33557, Stop: 34012, Start Num: 22

Candidate Starts for Abscondus_53:

(19, 33542), (Start: 22 @33557 has 14 MA's), (30, 33584), (46, 33611), (58, 33641), (64, 33656), (76, 33704), (77, 33710), (79, 33716), (92, 33785), (98, 33812), (101, 33824), (113, 33902), (122, 33935), (123, 33938), (130, 33959),

Gene: Agueybana_25 Start: 21812, Stop: 22186, Start Num: 25

Candidate Starts for Agueybana_25:

(14, 21728), (Start: 25 @21812 has 46 MA's), (55, 21860), (65, 21884), (Start: 66 @21890 has 44 MA's), (71, 21914), (74, 21923), (77, 21935), (118, 22127), (120, 22133), (121, 22136),

Gene: AlumE_25 Start: 21811, Stop: 22185, Start Num: 25

Candidate Starts for AlumE_25:

(14, 21727), (Start: 25 @21811 has 46 MA's), (55, 21859), (65, 21883), (Start: 66 @21889 has 44 MA's), (71, 21913), (74, 21922), (77, 21934), (118, 22126), (120, 22132), (121, 22135),

Gene: Alyssamiracle_41 Start: 31366, Stop: 31752, Start Num: 25

Candidate Starts for Alyssamiracle_41:

(Start: 25 @31366 has 46 MA's), (76, 31486), (84, 31516), (87, 31543), (92, 31567), (94, 31579), (102, 31609), (103, 31612), (116, 31678), (123, 31699), (124, 31702), (128, 31714),

Gene: Angelique_27 Start: 22414, Stop: 22800, Start Num: 66

Candidate Starts for Angelique_27:

(Start: 66 @22414 has 44 MA's), (Start: 68 @22423 has 1 MA's), (70, 22429), (75, 22450), (98, 22561), (104, 22585), (114, 22633), (119, 22654), (120, 22657), (126, 22675), (129, 22684), (132, 22717), (139, 22783),

Gene: Antonio_26 Start: 21932, Stop: 22306, Start Num: 25

Candidate Starts for Antonio_26:

(14, 21848), (Start: 25 @21932 has 46 MA's), (55, 21980), (65, 22004), (Start: 66 @22010 has 44 MA's), (71, 22034), (74, 22043), (77, 22055), (118, 22247), (120, 22253), (121, 22256),

Gene: Apeppi_37 Start: 32448, Stop: 32855, Start Num: 25

Candidate Starts for Apeppi_37:

(Start: 25 @32448 has 46 MA's), (49, 32481), (71, 32553), (75, 32565), (76, 32568), (81, 32586), (87, 32625), (91, 32646), (99, 32679), (102, 32691), (115, 32757), (118, 32766), (120, 32772), (123, 32781), (128, 32796),

Gene: Aphelion_54 Start: 33826, Stop: 34281, Start Num: 22

Candidate Starts for Aphelion_54:

(19, 33811), (Start: 22 @33826 has 14 MA's), (30, 33853), (46, 33880), (58, 33910), (64, 33925), (76, 33973), (77, 33979), (79, 33985), (92, 34054), (98, 34081), (101, 34093), (113, 34171), (122, 34204), (123, 34207), (130, 34228),

Gene: Apricot_26 Start: 20622, Stop: 21062, Start Num: 18

Candidate Starts for Apricot_26:

(Start: 18 @20622 has 24 MA's), (35, 20679), (Start: 50 @20706 has 1 MA's), (77, 20796), (86, 20829), (94, 20883), (95, 20886), (96, 20889), (98, 20898), (99, 20901), (104, 20922), (109, 20934), (119, 20991), (121, 20997), (123, 21003), (124, 21006), (125, 21009), (128, 21018), (130, 21024), (132, 21051),

Gene: Arri_46 Start: 35970, Stop: 36359, Start Num: 66

Candidate Starts for Arri_46:

(Start: 66 @35970 has 44 MA's), (74, 35997), (75, 36000), (77, 36009), (86, 36042), (88, 36069), (92, 36084), (96, 36102), (98, 36111), (99, 36114), (104, 36135), (118, 36201), (119, 36204), (120, 36207), (125, 36222), (126, 36225), (129, 36234), (130, 36237), (136, 36297),

Gene: Asapag_27 Start: 21064, Stop: 21504, Start Num: 18

Candidate Starts for Asapag_27:

(Start: 18 @21064 has 24 MA's), (35, 21121), (Start: 50 @21148 has 1 MA's), (77, 21238), (86, 21271), (94, 21325), (95, 21328), (96, 21331), (98, 21340), (99, 21343), (104, 21364), (109, 21376), (119, 21433), (121, 21439), (123, 21445), (124, 21448), (125, 21451), (128, 21460), (130, 21466), (132, 21493),

Gene: Avani_40 Start: 28789, Stop: 29178, Start Num: 37

Candidate Starts for Avani_40:

(Start: 26 @28774 has 1 MA's), (35, 28786), (Start: 37 @28789 has 9 MA's), (45, 28804), (51, 28816), (55, 28825), (57, 28831), (63, 28846), (69, 28870), (75, 28894), (76, 28897), (77, 28903), (79, 28909), (81, 28915), (83, 28924), (84, 28927), (90, 28972), (94, 28990), (97, 29002), (98, 29005), (99, 29008), (103, 29023), (113, 29074), (117, 29092), (118, 29095), (123, 29110), (127, 29122),

Gene: BBQValindra_25 Start: 21046, Stop: 21432, Start Num: 66

Candidate Starts for BBQValindra_25:

(Start: 66 @21046 has 44 MA's), (Start: 68 @21055 has 1 MA's), (70, 21061), (75, 21082), (98, 21193), (104, 21217), (119, 21286), (120, 21289), (125, 21304), (126, 21307), (129, 21316), (139, 21415),

Gene: BENtherdunthat_27 Start: 21061, Stop: 21501, Start Num: 18

Candidate Starts for BENtherdunthat_27:

(Start: 18 @21061 has 24 MA's), (35, 21118), (Start: 50 @21145 has 1 MA's), (77, 21235), (86, 21268), (94, 21322), (95, 21325), (96, 21328), (98, 21337), (99, 21340), (104, 21361), (109, 21373), (119, 21430), (121, 21436), (123, 21442), (124, 21445), (125, 21448), (128, 21457), (130, 21463), (132, 21490),

Gene: Bachita_56 Start: 34259, Stop: 34714, Start Num: 22

Candidate Starts for Bachita_56:

(19, 34244), (Start: 22 @34259 has 14 MA's), (30, 34286), (46, 34313), (58, 34343), (64, 34358), (76, 34406), (77, 34412), (79, 34418), (92, 34487), (98, 34514), (101, 34526), (113, 34604), (122, 34637), (123, 34640), (130, 34661),

Gene: BackstagePass_25 Start: 21178, Stop: 21564, Start Num: 66

Candidate Starts for BackstagePass_25:

(Start: 66 @21178 has 44 MA's), (Start: 68 @21187 has 1 MA's), (70, 21193), (74, 21211), (75, 21214), (96, 21316), (98, 21325), (104, 21349), (119, 21418), (120, 21421), (124, 21433), (125, 21436), (126, 21439), (139, 21547),

Gene: Bakery_48 Start: 37078, Stop: 37512, Start Num: 23

Candidate Starts for Bakery_48:

(15, 37018), (16, 37042), (Start: 23 @37078 has 14 MA's), (47, 37129), (56, 37153), (Start: 66 @37183 has 44 MA's), (74, 37216), (78, 37231), (79, 37234), (81, 37240), (101, 37342), (111, 37390), (113, 37399), (123, 37435), (125, 37441), (134, 37489),

Gene: Barb_45 Start: 36050, Stop: 36484, Start Num: 23

Candidate Starts for Barb_45:

(15, 35990), (16, 36014), (Start: 23 @36050 has 14 MA's), (56, 36125), (Start: 66 @36155 has 44 MA's), (74, 36188), (78, 36203), (79, 36206), (101, 36314), (111, 36362), (113, 36371), (123, 36407), (125, 36413), (128, 36422),

Gene: BaxterFox_24 Start: 21132, Stop: 21506, Start Num: 25

Candidate Starts for BaxterFox_24:

(8, 20949), (9, 20961), (10, 20967), (14, 21048), (Start: 25 @21132 has 46 MA's), (65, 21204), (Start: 66 @21210 has 44 MA's), (71, 21234), (74, 21243), (77, 21255), (81, 21267), (91, 21327), (101, 21369), (118, 21447), (120, 21453), (121, 21456),

Gene: BearBQ_26 Start: 21901, Stop: 22341, Start Num: 18

Candidate Starts for BearBQ_26:

(Start: 18 @21901 has 24 MA's), (35, 21958), (Start: 50 @21985 has 1 MA's), (77, 22075), (86, 22108), (94, 22162), (95, 22165), (96, 22168), (98, 22177), (99, 22180), (104, 22201), (109, 22213), (119, 22270), (121, 22276), (123, 22282), (124, 22285), (125, 22288), (128, 22297), (130, 22303), (132, 22330),

Gene: Birdsong_26 Start: 20794, Stop: 21234, Start Num: 18

Candidate Starts for Birdsong_26:

(Start: 18 @20794 has 24 MA's), (35, 20851), (Start: 50 @20878 has 1 MA's), (77, 20968), (86, 21001), (94, 21055), (95, 21058), (96, 21061), (98, 21070), (99, 21073), (104, 21094), (109, 21106), (119, 21163), (121, 21169), (123, 21175), (124, 21178), (125, 21181), (128, 21190), (130, 21196), (132, 21223),

Gene: BirthdayBoy_41 Start: 33095, Stop: 33490, Start Num: 25

Candidate Starts for BirthdayBoy_41:

(Start: 25 @33095 has 46 MA's), (61, 33161), (73, 33206), (76, 33215), (84, 33245), (92, 33296), (94, 33308), (116, 33407), (123, 33428), (124, 33431), (128, 33443),

Gene: Bowser_25 Start: 20957, Stop: 21343, Start Num: 66

Candidate Starts for Bowser_25:

(Start: 66 @20957 has 44 MA's), (Start: 68 @20966 has 1 MA's), (70, 20972), (75, 20993), (96, 21095), (98, 21104), (104, 21128), (119, 21197), (120, 21200), (124, 21212), (125, 21215), (126, 21218), (129, 21227), (139, 21326),

Gene: BoyNamedSue_25 Start: 21811, Stop: 22185, Start Num: 25

Candidate Starts for BoyNamedSue_25:

(14, 21727), (Start: 25 @21811 has 46 MA's), (55, 21859), (65, 21883), (Start: 66 @21889 has 44 MA's), (71, 21913), (74, 21922), (77, 21934), (118, 22126), (120, 22132), (121, 22135),

Gene: Bradissa_26 Start: 21680, Stop: 22060, Start Num: 66

Candidate Starts for Bradissa_26:

(Start: 66 @21680 has 44 MA's), (74, 21707), (75, 21710), (77, 21719), (86, 21752), (88, 21779), (96, 21812), (98, 21821), (104, 21845), (119, 21914), (120, 21917), (125, 21932), (126, 21935), (129, 21944), (136, 22007), (140, 22049),

Gene: BritBrat_26 Start: 21533, Stop: 21913, Start Num: 66

Candidate Starts for BritBrat_26:

(Start: 66 @21533 has 44 MA's), (74, 21560), (75, 21563), (77, 21572), (86, 21605), (88, 21632), (96, 21665), (98, 21674), (104, 21698), (119, 21767), (120, 21770), (125, 21785), (126, 21788), (129, 21797), (136, 21860), (140, 21902),

Gene: BrutonGaster_43 Start: 30940, Stop: 31359, Start Num: 22

Candidate Starts for BrutonGaster_43:

(19, 30928), (Start: 22 @30940 has 14 MA's), (64, 31015), (Start: 67 @31030 has 1 MA's), (74, 31057), (75, 31060), (76, 31063), (78, 31072), (80, 31078), (83, 31090), (92, 31144), (103, 31189), (105, 31198), (122, 31288), (123, 31291), (130, 31312),

Gene: Budski_27 Start: 21169, Stop: 21609, Start Num: 18

Candidate Starts for Budski_27:

(Start: 18 @21169 has 24 MA's), (35, 21226), (Start: 50 @21253 has 1 MA's), (77, 21343), (86, 21376), (94, 21430), (95, 21433), (96, 21436), (98, 21445), (99, 21448), (104, 21469), (109, 21481), (119, 21538), (121, 21544), (123, 21550), (124, 21553), (125, 21556), (128, 21565), (130, 21571), (132, 21598),

Gene: Bunker_25 Start: 21159, Stop: 21545, Start Num: 66

Candidate Starts for Bunker_25:

(Start: 66 @21159 has 44 MA's), (Start: 68 @21168 has 1 MA's), (70, 21174), (75, 21195), (98, 21306), (104, 21330), (119, 21399), (120, 21402), (126, 21420), (129, 21429), (134, 21465), (139, 21528),

Gene: Che9d_40 Start: 28798, Stop: 29187, Start Num: 37

Candidate Starts for Che9d_40:

(Start: 26 @28783 has 1 MA's), (35, 28795), (Start: 37 @28798 has 9 MA's), (54, 28831), (55, 28834), (56, 28837), (57, 28840), (69, 28879), (73, 28897), (75, 28903), (82, 28930), (94, 28999), (96, 29005), (97, 29011), (98, 29014), (99, 29017), (103, 29032), (110, 29071), (113, 29083), (117, 29101), (118, 29104), (123, 29119), (127, 29131),

Gene: CheeseTouch_27 Start: 21055, Stop: 21495, Start Num: 18

Candidate Starts for CheeseTouch_27:

(Start: 18 @21055 has 24 MA's), (35, 21112), (Start: 50 @21139 has 1 MA's), (77, 21229), (86, 21262), (94, 21316), (95, 21319), (96, 21322), (98, 21331), (99, 21334), (104, 21355), (109, 21367), (119, 21424), (121, 21430), (123, 21436), (124, 21439), (125, 21442), (128, 21451), (130, 21457), (132, 21484),

Gene: ClamChowder_45 Start: 36050, Stop: 36484, Start Num: 23

Candidate Starts for ClamChowder_45:

(15, 35990), (16, 36014), (Start: 23 @36050 has 14 MA's), (56, 36125), (Start: 66 @36155 has 44 MA's), (74, 36188), (78, 36203), (79, 36206), (101, 36314), (111, 36362), (113, 36371), (123, 36407), (125, 36413), (128, 36422),

Gene: ClubL_54 Start: 33748, Stop: 34203, Start Num: 22

Candidate Starts for ClubL_54:

(19, 33733), (Start: 22 @33748 has 14 MA's), (30, 33775), (46, 33802), (58, 33832), (64, 33847), (76, 33895), (77, 33901), (79, 33907), (92, 33976), (98, 34003), (101, 34015), (113, 34093), (122, 34126), (123, 34129), (130, 34150),

Gene: Coriander_26 Start: 22086, Stop: 22541, Start Num: 16

Candidate Starts for Coriander_26:

(1, 21702), (3, 21777), (4, 21846), (5, 21888), (6, 21909), (16, 22086), (Start: 17 @22098 has 3 MA's), (29, 22146), (40, 22167), (42, 22170), (55, 22197), (56, 22200), (58, 22206), (Start: 66 @22230 has 44 MA's), (69, 22242), (90, 22344), (95, 22365), (96, 22368), (98, 22377), (99, 22380), (103, 22395), (117, 22464), (123, 22482), (125, 22488), (131, 22527),

Gene: CoveyB_46 Start: 35788, Stop: 36177, Start Num: 66

Candidate Starts for CoveyB_46:

(Start: 66 @35788 has 44 MA's), (74, 35815), (75, 35818), (77, 35827), (86, 35860), (88, 35887), (92, 35902), (96, 35920), (98, 35929), (99, 35932), (104, 35953), (118, 36019), (119, 36022), (120, 36025), (125, 36040), (126, 36043), (129, 36052), (130, 36055), (136, 36115),

Gene: Crater_25 Start: 20622, Stop: 21062, Start Num: 18

Candidate Starts for Crater_25:

(Start: 18 @20622 has 24 MA's), (35, 20679), (Start: 50 @20706 has 1 MA's), (77, 20796), (86, 20829), (94, 20883), (95, 20886), (96, 20889), (98, 20898), (99, 20901), (104, 20922), (109, 20934), (119, 20991), (121, 20997), (123, 21003), (124, 21006), (125, 21009), (128, 21018), (130, 21024), (132, 21051),

Gene: Cucurbita_56 Start: 35118, Stop: 35573, Start Num: 22

Candidate Starts for Cucurbita_56:

(19, 35103), (Start: 22 @35118 has 14 MA's), (30, 35145), (46, 35172), (58, 35202), (64, 35217), (76, 35265), (77, 35271), (79, 35277), (92, 35346), (98, 35373), (101, 35385), (113, 35463), (122, 35496), (123, 35499), (130, 35520),

Gene: Culver_54 Start: 33557, Stop: 34012, Start Num: 22

Candidate Starts for Culver_54:

(19, 33542), (Start: 22 @33557 has 14 MA's), (30, 33584), (46, 33611), (58, 33641), (64, 33656), (76, 33704), (77, 33710), (79, 33716), (92, 33785), (98, 33812), (101, 33824), (113, 33902), (122, 33935), (123, 33938), (130, 33959),

Gene: Danyall_45 Start: 35790, Stop: 36179, Start Num: 66

Candidate Starts for Danyall_45:

(Start: 66 @35790 has 44 MA's), (74, 35817), (75, 35820), (77, 35829), (86, 35862), (88, 35889), (92, 35904), (96, 35922), (98, 35931), (104, 35955), (118, 36021), (119, 36024), (120, 36027), (125,

36042), (126, 36045), (129, 36054), (136, 36117),

Gene: DaviePasture_40 Start: 32896, Stop: 33291, Start Num: 25

Candidate Starts for DaviePasture_40:

(Start: 25 @32896 has 46 MA's), (61, 32962), (76, 33016), (92, 33097), (94, 33109), (102, 33139), (116, 33208), (123, 33229), (124, 33232), (128, 33244),

Gene: Demsculpinboyz_41 Start: 28731, Stop: 29120, Start Num: 37

Candidate Starts for Demsculpinboyz_41:

(Start: 26 @28716 has 1 MA's), (35, 28728), (Start: 37 @28731 has 9 MA's), (45, 28746), (51, 28758), (55, 28767), (57, 28773), (63, 28788), (69, 28812), (75, 28836), (76, 28839), (77, 28845), (78, 28848), (79, 28851), (81, 28857), (83, 28866), (84, 28869), (90, 28914), (94, 28932), (97, 28944), (98, 28947), (99, 28950), (103, 28965), (113, 29016), (117, 29034), (118, 29037), (123, 29052), (127, 29064),

Gene: Dmitri_26 Start: 22153, Stop: 22593, Start Num: 17

Candidate Starts for Dmitri_26:

(Start: 17 @22153 has 3 MA's), (29, 22201), (42, 22225), (55, 22252), (56, 22255), (58, 22261), (Start: 66 @22285 has 44 MA's), (69, 22297), (90, 22399), (95, 22420), (96, 22423), (98, 22432), (99, 22435), (103, 22450), (117, 22519), (123, 22537), (133, 22588),

Gene: DocB7_030 Start: 34120, Stop: 34521, Start Num: 36

Candidate Starts for DocB7_030:

(7, 33898), (11, 33961), (24, 34090), (33, 34114), (36, 34120), (60, 34174), (64, 34183), (85, 34267), (95, 34327), (101, 34351), (113, 34402), (117, 34420), (120, 34429),

Gene: Doggs_25 Start: 21797, Stop: 22240, Start Num: 17

Candidate Starts for Doggs_25:

(1, 21401), (3, 21476), (4, 21545), (5, 21587), (6, 21608), (16, 21785), (Start: 17 @21797 has 3 MA's), (29, 21845), (40, 21866), (42, 21869), (55, 21896), (56, 21899), (58, 21905), (Start: 66 @21929 has 44 MA's), (69, 21941), (90, 22043), (95, 22064), (96, 22067), (98, 22076), (99, 22079), (103, 22094), (117, 22163), (123, 22181), (125, 22187), (131, 22226),

Gene: DoobyDoo_39 Start: 32046, Stop: 32441, Start Num: 25

Candidate Starts for DoobyDoo_39:

(Start: 25 @32046 has 46 MA's), (61, 32112), (76, 32166), (92, 32247), (94, 32259), (102, 32289), (116, 32358), (123, 32379), (124, 32382), (128, 32394),

Gene: Dusty_52 Start: 33557, Stop: 34012, Start Num: 22

Candidate Starts for Dusty_52:

(19, 33542), (Start: 22 @33557 has 14 MA's), (30, 33584), (46, 33611), (58, 33641), (64, 33656), (76, 33704), (77, 33710), (79, 33716), (92, 33785), (98, 33812), (101, 33824), (113, 33902), (122, 33935), (123, 33938), (130, 33959),

Gene: EMSquaredA_26 Start: 21533, Stop: 21913, Start Num: 66

Candidate Starts for EMSquaredA_26:

(Start: 66 @21533 has 44 MA's), (74, 21560), (75, 21563), (77, 21572), (86, 21605), (88, 21632), (96, 21665), (98, 21674), (104, 21698), (119, 21767), (120, 21770), (125, 21785), (126, 21788), (129, 21797), (136, 21860), (140, 21902),

Gene: EdnaMode_22 Start: 18339, Stop: 18710, Start Num: 66

Candidate Starts for EdnaMode_22:

(Start: 66 @18339 has 44 MA's), (74, 18366), (75, 18369), (77, 18378), (88, 18438), (96, 18471), (98, 18480), (104, 18504), (119, 18573), (120, 18576), (126, 18594), (127, 18597), (129, 18603), (130,

18606), (136, 18666),

Gene: EnalisNailo_26 Start: 21682, Stop: 22062, Start Num: 66

Candidate Starts for EnalisNailo_26:

(Start: 66 @21682 has 44 MA's), (74, 21709), (75, 21712), (77, 21721), (86, 21754), (88, 21781), (96, 21814), (98, 21823), (104, 21847), (119, 21916), (120, 21919), (125, 21934), (126, 21937), (129, 21946), (136, 22009), (140, 22051),

Gene: Engineer_56 Start: 34232, Stop: 34687, Start Num: 22

Candidate Starts for Engineer_56:

(19, 34217), (Start: 22 @34232 has 14 MA's), (30, 34259), (46, 34286), (58, 34316), (64, 34331), (76, 34379), (77, 34385), (79, 34391), (92, 34460), (98, 34487), (101, 34499), (113, 34577), (122, 34610), (123, 34613), (130, 34634),

Gene: Erutan_40 Start: 32554, Stop: 32949, Start Num: 25

Candidate Starts for Erutan_40:

(Start: 25 @32554 has 46 MA's), (61, 32620), (76, 32674), (84, 32704), (92, 32755), (94, 32767), (116, 32866), (123, 32887), (124, 32890), (128, 32902),

Gene: Eudoria_26 Start: 21932, Stop: 22306, Start Num: 25

Candidate Starts for Eudoria_26:

(14, 21848), (Start: 25 @21932 has 46 MA's), (55, 21980), (65, 22004), (Start: 66 @22010 has 44 MA's), (71, 22034), (74, 22043), (77, 22055), (118, 22247), (120, 22253), (121, 22256),

Gene: Evamon_42 Start: 35809, Stop: 36198, Start Num: 66

Candidate Starts for Evamon_42:

(Start: 66 @35809 has 44 MA's), (74, 35836), (75, 35839), (77, 35848), (86, 35881), (88, 35908), (92, 35923), (96, 35941), (98, 35950), (104, 35974), (118, 36040), (119, 36043), (120, 36046), (125, 36061), (126, 36064), (129, 36073), (136, 36136),

Gene: Eyes_25 Start: 21050, Stop: 21436, Start Num: 66

Candidate Starts for Eyes_25:

(Start: 66 @21050 has 44 MA's), (Start: 68 @21059 has 1 MA's), (70, 21065), (74, 21083), (75, 21086), (96, 21188), (98, 21197), (104, 21221), (119, 21290), (120, 21293), (124, 21305), (125, 21308), (126, 21311), (129, 21320), (139, 21419),

Gene: Eyre_22 Start: 19166, Stop: 19540, Start Num: 25

Candidate Starts for Eyre_22:

(14, 19082), (Start: 25 @19166 has 46 MA's), (65, 19238), (71, 19268), (74, 19277), (77, 19289), (81, 19301), (84, 19313), (92, 19364), (97, 19388), (101, 19403), (113, 19460),

Gene: FF47_31 Start: 24709, Stop: 25119, Start Num: 32

Candidate Starts for FF47_31:

(Start: 18 @24658 has 24 MA's), (Start: 32 @24709 has 1 MA's), (43, 24727), (62, 24772), (78, 24829), (111, 24988), (117, 25015), (118, 25018), (120, 25024), (123, 25033), (136, 25114),

Gene: Fairfaxidum_24 Start: 21186, Stop: 21560, Start Num: 66

Candidate Starts for Fairfaxidum_24:

(Start: 66 @21186 has 44 MA's), (75, 21222), (94, 21318), (95, 21321), (104, 21357), (121, 21432), (122, 21435), (126, 21447),

Gene: Faith5x5_22 Start: 18281, Stop: 18646, Start Num: 66

Candidate Starts for Faith5x5_22:

(Start: 66 @18281 has 44 MA's), (Start: 68 @18290 has 1 MA's), (75, 18317), (76, 18320), (78, 18329), (88, 18386), (89, 18392), (104, 18452), (119, 18521), (120, 18524), (125, 18539), (127, 18545), (129, 18551), (130, 18554),

Gene: Fireball_44 Start: 35995, Stop: 36429, Start Num: 23

Candidate Starts for Fireball_44:

(15, 35935), (16, 35959), (Start: 23 @35995 has 14 MA's), (56, 36070), (Start: 66 @36100 has 44 MA's), (74, 36133), (78, 36148), (79, 36151), (101, 36259), (111, 36307), (113, 36316), (123, 36352), (125, 36358), (128, 36367),

Gene: Floral_26 Start: 21533, Stop: 21913, Start Num: 66

Candidate Starts for Floral_26:

(Start: 66 @21533 has 44 MA's), (74, 21560), (75, 21563), (77, 21572), (86, 21605), (88, 21632), (96, 21665), (98, 21674), (104, 21698), (119, 21767), (120, 21770), (125, 21785), (126, 21788), (129, 21797), (136, 21860), (140, 21902),

Gene: Frickyeah_26 Start: 20827, Stop: 21267, Start Num: 18

Candidate Starts for Frickyeah_26:

(Start: 18 @20827 has 24 MA's), (35, 20884), (Start: 50 @20911 has 1 MA's), (77, 21001), (86, 21034), (94, 21088), (95, 21091), (96, 21094), (98, 21103), (99, 21106), (104, 21127), (109, 21139), (119, 21196), (121, 21202), (123, 21208), (124, 21211), (125, 21214), (128, 21223), (130, 21229), (132, 21256),

Gene: Fugax_46 Start: 36042, Stop: 36476, Start Num: 23

Candidate Starts for Fugax_46:

(15, 35982), (16, 36006), (Start: 23 @36042 has 14 MA's), (56, 36117), (Start: 66 @36147 has 44 MA's), (74, 36180), (78, 36195), (79, 36198), (101, 36306), (111, 36354), (113, 36363), (123, 36399), (125, 36405), (128, 36414),

Gene: Fulcrum_41 Start: 33075, Stop: 33470, Start Num: 25

Candidate Starts for Fulcrum_41:

(Start: 25 @33075 has 46 MA's), (61, 33141), (76, 33195), (92, 33276), (94, 33288), (102, 33318), (116, 33387), (123, 33408), (124, 33411), (128, 33423),

Gene: GEazy_25 Start: 21065, Stop: 21451, Start Num: 66

Candidate Starts for GEazy_25:

(Start: 66 @21065 has 44 MA's), (Start: 68 @21074 has 1 MA's), (70, 21080), (74, 21098), (75, 21101), (96, 21203), (98, 21212), (104, 21236), (119, 21305), (120, 21308), (125, 21323), (126, 21326), (129, 21335), (139, 21434),

Gene: GOATification_41 Start: 33075, Stop: 33470, Start Num: 25

Candidate Starts for GOATification_41:

(Start: 25 @33075 has 46 MA's), (61, 33141), (76, 33195), (92, 33276), (94, 33288), (102, 33318), (116, 33387), (123, 33408), (124, 33411), (128, 33423),

Gene: Geeche_53 Start: 33648, Stop: 34103, Start Num: 22

Candidate Starts for Geeche_53:

(19, 33633), (Start: 22 @33648 has 14 MA's), (30, 33675), (46, 33702), (58, 33732), (64, 33747), (76, 33795), (77, 33801), (79, 33807), (92, 33876), (98, 33903), (101, 33915), (113, 33993), (122, 34026), (123, 34029), (130, 34050),

Gene: Genamy16_41 Start: 31366, Stop: 31752, Start Num: 25

Candidate Starts for Genamy16_41:

(Start: 25 @31366 has 46 MA's), (76, 31486), (84, 31516), (87, 31543), (92, 31567), (94, 31579), (102, 31609), (103, 31612), (116, 31678), (123, 31699), (124, 31702), (128, 31714),

Gene: Getalong_28 Start: 21864, Stop: 22304, Start Num: 18

Candidate Starts for Getalong_28:

(Start: 18 @21864 has 24 MA's), (35, 21921), (Start: 50 @21948 has 1 MA's), (77, 22038), (86, 22071), (94, 22125), (95, 22128), (96, 22131), (98, 22140), (99, 22143), (104, 22164), (109, 22176), (119, 22233), (121, 22239), (123, 22245), (124, 22248), (125, 22251), (128, 22260), (130, 22266), (132, 22293),

Gene: Gezellig_44 Start: 35941, Stop: 36330, Start Num: 66

Candidate Starts for Gezellig_44:

(Start: 66 @35941 has 44 MA's), (74, 35968), (75, 35971), (77, 35980), (86, 36013), (88, 36040), (92, 36055), (96, 36073), (98, 36082), (99, 36085), (104, 36106), (118, 36172), (119, 36175), (120, 36178), (125, 36193), (126, 36196), (129, 36205), (130, 36208), (136, 36268),

Gene: Gibbin_41 Start: 33173, Stop: 33559, Start Num: 25

Candidate Starts for Gibbin_41:

(Start: 25 @33173 has 46 MA's), (61, 33239), (76, 33293), (92, 33374), (94, 33386), (102, 33416), (116, 33485), (123, 33506), (124, 33509), (128, 33521),

Gene: Gretellyn_40 Start: 33439, Stop: 33834, Start Num: 25

Candidate Starts for Gretellyn_40:

(Start: 25 @33439 has 46 MA's), (61, 33505), (76, 33559), (84, 33589), (92, 33640), (94, 33652), (102, 33682), (116, 33751), (123, 33772), (124, 33775), (128, 33787),

Gene: Gudmit_23 Start: 19228, Stop: 19611, Start Num: 31

Candidate Starts for Gudmit_23:

(Start: 31 @19228 has 1 MA's), (58, 19285), (70, 19324), (72, 19336), (77, 19354), (79, 19360), (82, 19372), (99, 19459), (101, 19468), (104, 19480), (111, 19516), (115, 19537), (120, 19552), (124, 19564),

Gene: Halo3_43 Start: 36234, Stop: 36623, Start Num: 66

Candidate Starts for Halo3_43:

(Start: 66 @36234 has 44 MA's), (74, 36261), (75, 36264), (77, 36273), (86, 36306), (88, 36333), (92, 36348), (96, 36366), (98, 36375), (104, 36399), (118, 36465), (119, 36468), (120, 36471), (125, 36486), (126, 36489), (129, 36498), (136, 36561),

Gene: HannahD_25 Start: 21065, Stop: 21451, Start Num: 66

Candidate Starts for HannahD_25:

(Start: 66 @21065 has 44 MA's), (Start: 68 @21074 has 1 MA's), (70, 21080), (74, 21098), (75, 21101), (96, 21203), (98, 21212), (104, 21236), (119, 21305), (120, 21308), (125, 21323), (126, 21326), (129, 21335), (139, 21434),

Gene: Holliday_27 Start: 21169, Stop: 21609, Start Num: 18

Candidate Starts for Holliday_27:

(Start: 18 @21169 has 24 MA's), (35, 21226), (Start: 50 @21253 has 1 MA's), (77, 21343), (86, 21376), (94, 21430), (95, 21433), (96, 21436), (98, 21445), (99, 21448), (104, 21469), (109, 21481), (119, 21538), (121, 21544), (123, 21550), (124, 21553), (125, 21556), (128, 21565), (130, 21571), (132, 21598),

Gene: Horus_27 Start: 21086, Stop: 21526, Start Num: 18

Candidate Starts for Horus_27:

(Start: 18 @21086 has 24 MA's), (35, 21143), (Start: 50 @21170 has 1 MA's), (77, 21260), (86, 21293), (94, 21347), (95, 21350), (96, 21353), (98, 21362), (99, 21365), (104, 21386), (109, 21398), (119, 21455), (121, 21461), (123, 21467), (124, 21470), (125, 21473), (128, 21482), (130, 21488), (132, 21515),

Gene: Hyzer_26 Start: 22472, Stop: 22846, Start Num: 25

Candidate Starts for Hyzer_26:

(Start: 25 @22472 has 46 MA's), (55, 22520), (65, 22544), (71, 22574), (74, 22583), (77, 22595), (81, 22607), (91, 22667), (118, 22787), (120, 22793),

Gene: Jabbawokkie_43 Start: 30179, Stop: 30568, Start Num: 37

Candidate Starts for Jabbawokkie_43:

(Start: 26 @30164 has 1 MA's), (35, 30176), (Start: 37 @30179 has 9 MA's), (45, 30194), (51, 30206), (55, 30215), (57, 30221), (63, 30236), (69, 30260), (75, 30284), (76, 30287), (77, 30293), (79, 30299), (81, 30305), (83, 30314), (84, 30317), (90, 30362), (94, 30380), (97, 30392), (98, 30395), (99, 30398), (103, 30413), (113, 30464), (117, 30482), (118, 30485), (123, 30500), (127, 30512),

Gene: Jalebi_39 Start: 33608, Stop: 34003, Start Num: 25

Candidate Starts for Jalebi_39:

(Start: 25 @33608 has 46 MA's), (61, 33674), (76, 33728), (84, 33758), (92, 33809), (94, 33821), (102, 33851), (116, 33920), (123, 33941), (124, 33944), (128, 33956),

Gene: Jambalaya_43 Start: 35588, Stop: 35977, Start Num: 66

Candidate Starts for Jambalaya_43:

(Start: 66 @35588 has 44 MA's), (74, 35615), (75, 35618), (77, 35627), (86, 35660), (88, 35687), (92, 35702), (96, 35720), (98, 35729), (104, 35753), (118, 35819), (119, 35822), (120, 35825), (125, 35840), (126, 35843), (129, 35852), (136, 35915),

Gene: Jamemuya19_40 Start: 30956, Stop: 31342, Start Num: 25

Candidate Starts for Jamemuya19_40:

(Start: 25 @30956 has 46 MA's), (76, 31076), (84, 31106), (87, 31133), (92, 31157), (94, 31169), (102, 31199), (103, 31202), (116, 31268), (123, 31289), (124, 31292), (128, 31304),

Gene: Kamaru_27 Start: 21169, Stop: 21609, Start Num: 18

Candidate Starts for Kamaru_27:

(Start: 18 @21169 has 24 MA's), (35, 21226), (Start: 50 @21253 has 1 MA's), (77, 21343), (86, 21376), (94, 21430), (95, 21433), (96, 21436), (98, 21445), (99, 21448), (104, 21469), (109, 21481), (119, 21538), (121, 21544), (123, 21550), (124, 21553), (125, 21556), (128, 21565), (130, 21571), (132, 21598),

Gene: Kenna_26 Start: 21062, Stop: 21502, Start Num: 18

Candidate Starts for Kenna_26:

(Start: 18 @21062 has 24 MA's), (35, 21119), (Start: 50 @21146 has 1 MA's), (77, 21236), (86, 21269), (94, 21323), (95, 21326), (96, 21329), (98, 21338), (99, 21341), (104, 21362), (109, 21374), (119, 21431), (121, 21437), (123, 21443), (124, 21446), (125, 21449), (128, 21458), (130, 21464), (132, 21491),

Gene: KimmyK_44 Start: 36523, Stop: 36912, Start Num: 66

Candidate Starts for KimmyK_44:

(Start: 66 @36523 has 44 MA's), (74, 36550), (75, 36553), (77, 36562), (86, 36595), (88, 36622), (92, 36637), (96, 36655), (98, 36664), (99, 36667), (104, 36688), (118, 36754), (119, 36757), (120, 36760), (125, 36775), (126, 36778), (129, 36787), (130, 36790), (136, 36850),

Gene: Kita_26 Start: 21932, Stop: 22306, Start Num: 25

Candidate Starts for Kita_26:

(14, 21848), (Start: 25 @21932 has 46 MA's), (55, 21980), (65, 22004), (Start: 66 @22010 has 44 MA's), (71, 22034), (74, 22043), (77, 22055), (118, 22247), (120, 22253), (121, 22256),

Gene: Kuwabara_26 Start: 20488, Stop: 20928, Start Num: 18

Candidate Starts for Kuwabara_26:

(Start: 18 @20488 has 24 MA's), (35, 20545), (Start: 50 @20572 has 1 MA's), (77, 20662), (86, 20695), (94, 20749), (95, 20752), (96, 20755), (98, 20764), (99, 20767), (104, 20788), (109, 20800), (119, 20857), (121, 20863), (123, 20869), (124, 20872), (125, 20875), (128, 20884), (130, 20890), (132, 20917),

Gene: Lamberg_22 Start: 18339, Stop: 18710, Start Num: 66

Candidate Starts for Lamberg_22:

(Start: 66 @18339 has 44 MA's), (74, 18366), (75, 18369), (77, 18378), (88, 18438), (96, 18471), (98, 18480), (104, 18504), (119, 18573), (120, 18576), (126, 18594), (127, 18597), (129, 18603), (130, 18606), (136, 18666),

Gene: Lambo_40 Start: 33093, Stop: 33488, Start Num: 25

Candidate Starts for Lambo_40:

(Start: 25 @33093 has 46 MA's), (61, 33159), (76, 33213), (84, 33243), (92, 33294), (94, 33306), (102, 33336), (116, 33405), (123, 33426), (124, 33429), (128, 33441),

Gene: Leroy_27 Start: 21087, Stop: 21527, Start Num: 18

Candidate Starts for Leroy_27:

(Start: 18 @21087 has 24 MA's), (35, 21144), (Start: 50 @21171 has 1 MA's), (77, 21261), (86, 21294), (94, 21348), (95, 21351), (96, 21354), (98, 21363), (99, 21366), (104, 21387), (109, 21399), (119, 21456), (121, 21462), (123, 21468), (124, 21471), (125, 21474), (128, 21483), (130, 21489), (132, 21516),

Gene: LilSpotty_36 Start: 26778, Stop: 27152, Start Num: 37

Candidate Starts for LilSpotty_36:

(20, 26739), (35, 26775), (Start: 37 @26778 has 9 MA's), (76, 26886), (78, 26895), (80, 26901), (86, 26925), (90, 26961), (94, 26979), (98, 26994), (103, 27012), (110, 27051), (123, 27099),

Gene: Lila22_39 Start: 33048, Stop: 33443, Start Num: 25

Candidate Starts for Lila22_39:

(Start: 25 @33048 has 46 MA's), (61, 33114), (76, 33168), (84, 33198), (92, 33249), (94, 33261), (116, 33360), (123, 33381), (124, 33384), (128, 33396),

Gene: Lilas_26 Start: 21682, Stop: 22062, Start Num: 66

Candidate Starts for Lilas_26:

(Start: 66 @21682 has 44 MA's), (74, 21709), (75, 21712), (77, 21721), (86, 21754), (88, 21781), (96, 21814), (98, 21823), (104, 21847), (119, 21916), (120, 21919), (125, 21934), (126, 21937), (129, 21946), (136, 22009), (140, 22051),

Gene: LitninMcQueen_26 Start: 20818, Stop: 21258, Start Num: 18

Candidate Starts for LitninMcQueen_26:

(Start: 18 @20818 has 24 MA's), (35, 20875), (Start: 50 @20902 has 1 MA's), (77, 20992), (86, 21025), (94, 21079), (95, 21082), (96, 21085), (98, 21094), (99, 21097), (104, 21118), (109, 21130), (119, 21187), (121, 21193), (123, 21199), (124, 21202), (128, 21214), (130, 21220), (132, 21247),

Gene: Lozinak_55 Start: 34287, Stop: 34742, Start Num: 22

Candidate Starts for Lozinak_55:

(19, 34272), (Start: 22 @34287 has 14 MA's), (30, 34314), (46, 34341), (58, 34371), (64, 34386), (76, 34434), (77, 34440), (79, 34446), (92, 34515), (98, 34542), (101, 34554), (113, 34632), (122, 34665), (123, 34668), (130, 34689),

Gene: Lton_22 Start: 18368, Stop: 18739, Start Num: 66

Candidate Starts for Lton_22:

(Start: 66 @18368 has 44 MA's), (74, 18395), (75, 18398), (77, 18407), (88, 18467), (96, 18500), (98, 18509), (104, 18533), (119, 18602), (120, 18605), (126, 18623), (127, 18626), (129, 18632), (130, 18635), (136, 18695),

Gene: LuckyLeo_39 Start: 32448, Stop: 32855, Start Num: 25

Candidate Starts for LuckyLeo_39:

(Start: 25 @32448 has 46 MA's), (49, 32481), (71, 32553), (75, 32565), (76, 32568), (81, 32586), (87, 32625), (91, 32646), (99, 32679), (102, 32691), (115, 32757), (118, 32766), (120, 32772), (123, 32781), (128, 32796),

Gene: LunaStella_37 Start: 30071, Stop: 30460, Start Num: 37

Candidate Starts for LunaStella_37:

(Start: 26 @30056 has 1 MA's), (Start: 37 @30071 has 9 MA's), (Start: 48 @30089 has 1 MA's), (52, 30101), (54, 30104), (55, 30107), (57, 30113), (58, 30116), (59, 30119), (63, 30128), (Start: 66 @30140 has 44 MA's), (75, 30176), (76, 30179), (78, 30188), (79, 30191), (81, 30197), (86, 30218), (90, 30254), (94, 30272), (96, 30278), (97, 30284), (98, 30287), (99, 30290), (102, 30302), (104, 30311), (110, 30344), (111, 30347), (118, 30377), (123, 30392), (127, 30404),

Gene: Lutum_27 Start: 21062, Stop: 21502, Start Num: 18

Candidate Starts for Lutum_27:

(Start: 18 @21062 has 24 MA's), (35, 21119), (Start: 50 @21146 has 1 MA's), (77, 21236), (86, 21269), (94, 21323), (95, 21326), (96, 21329), (98, 21338), (99, 21341), (104, 21362), (109, 21374), (119, 21431), (121, 21437), (123, 21443), (124, 21446), (125, 21449), (128, 21458), (130, 21464), (132, 21491),

Gene: Maco6_29 Start: 24049, Stop: 24459, Start Num: 34

Candidate Starts for Maco6_29:

(28, 24040), (Start: 34 @24049 has 1 MA's), (62, 24112), (78, 24169), (111, 24328), (120, 24364), (123, 24373), (136, 24454),

Gene: MagicMan_25 Start: 21371, Stop: 21757, Start Num: 66

Candidate Starts for MagicMan_25:

(Start: 66 @21371 has 44 MA's), (Start: 68 @21380 has 1 MA's), (70, 21386), (75, 21407), (96, 21509), (98, 21518), (104, 21542), (119, 21611), (120, 21614), (124, 21626), (125, 21629), (126, 21632), (129, 21641), (139, 21740),

Gene: Malisha_28 Start: 22947, Stop: 23384, Start Num: 18

Candidate Starts for Malisha_28:

(Start: 18 @22947 has 24 MA's), (35, 23004), (Start: 50 @23031 has 1 MA's), (51, 23034), (52, 23037), (58, 23052), (63, 23064), (78, 23124), (86, 23154), (95, 23211), (96, 23214), (99, 23226), (102, 23238), (103, 23241), (104, 23247), (109, 23259), (114, 23295), (115, 23304), (119, 23316), (121, 23322), (123, 23328), (124, 23331), (125, 23334), (128, 23343), (130, 23349),

Gene: Manasvini_26 Start: 21932, Stop: 22306, Start Num: 25

Candidate Starts for Manasvini_26:

(14, 21848), (Start: 25 @21932 has 46 MA's), (55, 21980), (65, 22004), (Start: 66 @22010 has 44 MA's), (71, 22034), (74, 22043), (77, 22055), (118, 22247), (120, 22253), (121, 22256),

Gene: Maridalia_25 Start: 21932, Stop: 22306, Start Num: 25

Candidate Starts for Maridalia_25:

(14, 21848), (Start: 25 @21932 has 46 MA's), (55, 21980), (65, 22004), (Start: 66 @22010 has 44 MA's), (71, 22034), (74, 22043), (77, 22055), (118, 22247), (120, 22253), (121, 22256),

Gene: Marteena_26 Start: 21533, Stop: 21913, Start Num: 66

Candidate Starts for Marteena_26:

(Start: 66 @21533 has 44 MA's), (74, 21560), (75, 21563), (77, 21572), (86, 21605), (88, 21632), (96, 21665), (98, 21674), (104, 21698), (119, 21767), (120, 21770), (125, 21785), (126, 21788), (129, 21797), (136, 21860), (140, 21902),

Gene: Matteo_22 Start: 18276, Stop: 18656, Start Num: 66

Candidate Starts for Matteo_22:

(Start: 66 @18276 has 44 MA's), (74, 18303), (75, 18306), (77, 18315), (86, 18348), (88, 18375), (96, 18408), (98, 18417), (104, 18441), (119, 18510), (120, 18513), (125, 18528), (126, 18531), (129, 18540), (136, 18603),

Gene: Miskis_56 Start: 33592, Stop: 34047, Start Num: 22

Candidate Starts for Miskis_56:

(19, 33577), (Start: 22 @33592 has 14 MA's), (30, 33619), (46, 33646), (58, 33676), (64, 33691), (76, 33739), (77, 33745), (79, 33751), (92, 33820), (98, 33847), (101, 33859), (113, 33937), (122, 33970), (123, 33973), (130, 33994),

Gene: MoiGyank_42 Start: 33478, Stop: 33873, Start Num: 25

Candidate Starts for MoiGyank_42:

(Start: 25 @33478 has 46 MA's), (61, 33544), (76, 33598), (84, 33628), (92, 33679), (94, 33691), (102, 33721), (116, 33790), (123, 33811), (124, 33814), (128, 33826),

Gene: MooMoo_33 Start: 28618, Stop: 29007, Start Num: 37

Candidate Starts for MooMoo_33:

(Start: 26 @28603 has 1 MA's), (Start: 37 @28618 has 9 MA's), (Start: 48 @28636 has 1 MA's), (52, 28648), (54, 28651), (55, 28654), (57, 28660), (58, 28663), (59, 28666), (63, 28675), (Start: 66 @28687 has 44 MA's), (75, 28723), (76, 28726), (78, 28735), (79, 28738), (81, 28744), (86, 28765), (90, 28801), (94, 28819), (96, 28825), (97, 28831), (98, 28834), (99, 28837), (102, 28849), (104, 28858), (110, 28891), (111, 28894), (118, 28924), (123, 28939),

Gene: Moosehead_22 Start: 18289, Stop: 18654, Start Num: 66

Candidate Starts for Moosehead_22:

(Start: 66 @18289 has 44 MA's), (Start: 68 @18298 has 1 MA's), (78, 18337), (88, 18394), (89, 18400), (112, 18502), (118, 18526), (119, 18529), (120, 18532), (125, 18547), (127, 18553), (129, 18559), (130, 18562),

Gene: MortyNRick_26 Start: 20794, Stop: 21234, Start Num: 18

Candidate Starts for MortyNRick_26:

(Start: 18 @20794 has 24 MA's), (35, 20851), (Start: 50 @20878 has 1 MA's), (77, 20968), (86, 21001), (94, 21055), (95, 21058), (96, 21061), (98, 21070), (99, 21073), (104, 21094), (109, 21106), (119, 21163), (121, 21169), (123, 21175), (124, 21178), (125, 21181), (128, 21190), (130, 21196), (132, 21223),

Gene: Muddy_31 Start: 24990, Stop: 25400, Start Num: 32

Candidate Starts for Muddy_31:

(Start: 32 @24990 has 1 MA's), (62, 25053), (103, 25227), (104, 25233), (106, 25236), (111, 25269), (117, 25296), (120, 25305), (123, 25314), (135, 25377), (136, 25395),

Gene: Mutzi_42 Start: 36730, Stop: 37164, Start Num: 23

Candidate Starts for Mutzi_42:

(15, 36670), (16, 36694), (Start: 23 @36730 has 14 MA's), (56, 36805), (Start: 66 @36835 has 44 MA's), (74, 36868), (78, 36883), (79, 36886), (101, 36994), (111, 37042), (123, 37087), (125, 37093), (128, 37102),

Gene: Neobush_26 Start: 21932, Stop: 22306, Start Num: 25

Candidate Starts for Neobush_26:

(14, 21848), (Start: 25 @21932 has 46 MA's), (55, 21980), (65, 22004), (Start: 66 @22010 has 44 MA's), (71, 22034), (74, 22043), (77, 22055), (118, 22247), (120, 22253), (121, 22256),

Gene: Nettuno_22 Start: 18342, Stop: 18710, Start Num: 66

Candidate Starts for Nettuno_22:

(Start: 66 @18342 has 44 MA's), (74, 18369), (75, 18372), (77, 18381), (86, 18414), (88, 18441), (96, 18474), (98, 18483), (104, 18507), (119, 18576), (120, 18579), (125, 18594), (126, 18597), (129, 18606), (136, 18669),

Gene: NorManre_41 Start: 32684, Stop: 33079, Start Num: 25

Candidate Starts for NorManre_41:

(Start: 25 @32684 has 46 MA's), (61, 32750), (76, 32804), (92, 32885), (94, 32897), (102, 32927), (116, 32996), (123, 33017), (124, 33020), (128, 33032),

Gene: Norvs_55 Start: 33831, Stop: 34286, Start Num: 22

Candidate Starts for Norvs_55:

(19, 33816), (Start: 22 @33831 has 14 MA's), (30, 33858), (46, 33885), (58, 33915), (64, 33930), (76, 33978), (77, 33984), (79, 33990), (92, 34059), (98, 34086), (101, 34098), (113, 34176), (122, 34209), (123, 34212), (130, 34233),

Gene: NovaSharks_40 Start: 30956, Stop: 31342, Start Num: 25

Candidate Starts for NovaSharks_40:

(Start: 25 @30956 has 46 MA's), (76, 31076), (84, 31106), (87, 31133), (92, 31157), (94, 31169), (102, 31199), (103, 31202), (116, 31268), (123, 31289), (124, 31292), (128, 31304),

Gene: Nubi_43 Start: 35875, Stop: 36309, Start Num: 23

Candidate Starts for Nubi_43:

(15, 35815), (16, 35839), (Start: 23 @35875 has 14 MA's), (56, 35950), (Start: 66 @35980 has 44 MA's), (74, 36013), (78, 36028), (79, 36031), (101, 36139), (111, 36187), (113, 36196), (123, 36232), (125, 36238), (128, 36247),

Gene: OneDirection_21 Start: 18308, Stop: 18682, Start Num: 66

Candidate Starts for OneDirection_21:

(12, 18086), (13, 18116), (Start: 66 @18308 has 44 MA's), (69, 18320), (70, 18323), (75, 18344), (76, 18347), (78, 18356), (86, 18386), (94, 18440), (101, 18467), (104, 18479), (120, 18551), (122, 18557),

Gene: OneUp_48 Start: 31264, Stop: 31683, Start Num: 22

Candidate Starts for OneUp_48:

(19, 31252), (Start: 22 @31264 has 14 MA's), (39, 31288), (64, 31339), (Start: 67 @31354 has 1 MA's), (74, 31381), (75, 31384), (76, 31387), (77, 31393), (78, 31396), (83, 31414), (92, 31468), (104, 31519), (105, 31522), (108, 31543), (122, 31612), (123, 31615), (130, 31636),

Gene: Opie_25 Start: 21395, Stop: 21781, Start Num: 66

Candidate Starts for Opie_25:

(Start: 66 @21395 has 44 MA's), (Start: 68 @21404 has 1 MA's), (70, 21410), (74, 21428), (75, 21431), (96, 21533), (97, 21539), (98, 21542), (104, 21566), (118, 21632), (119, 21635), (120, 21638), (124, 21650), (125, 21653), (126, 21656), (129, 21665), (139, 21764),

Gene: OtterstedtS21_40 Start: 32755, Stop: 33150, Start Num: 25

Candidate Starts for OtterstedtS21_40:

(Start: 25 @32755 has 46 MA's), (61, 32821), (76, 32875), (84, 32905), (92, 32956), (94, 32968), (102, 32998), (116, 33067), (123, 33088), (124, 33091), (128, 33103),

Gene: PantheRoc_25 Start: 21130, Stop: 21504, Start Num: 25

Candidate Starts for PantheRoc_25:

(14, 21046), (Start: 25 @21130 has 46 MA's), (55, 21178), (65, 21202), (Start: 66 @21208 has 44 MA's), (71, 21232), (74, 21241), (77, 21253), (118, 21445), (120, 21451), (121, 21454),

Gene: ParvusTarda_40 Start: 32223, Stop: 32618, Start Num: 25

Candidate Starts for ParvusTarda_40:

(Start: 25 @32223 has 46 MA's), (61, 32289), (73, 32334), (76, 32343), (84, 32373), (92, 32424), (94, 32436), (116, 32535), (123, 32556), (124, 32559), (128, 32571),

Gene: Patos_41 Start: 32684, Stop: 33079, Start Num: 25

Candidate Starts for Patos_41:

(Start: 25 @32684 has 46 MA's), (61, 32750), (76, 32804), (92, 32885), (94, 32897), (102, 32927), (116, 32996), (123, 33017), (124, 33020), (128, 33032),

Gene: Pepperoni_23 Start: 19151, Stop: 19531, Start Num: 66

Candidate Starts for Pepperoni_23:

(Start: 66 @19151 has 44 MA's), (74, 19178), (75, 19181), (77, 19190), (86, 19223), (88, 19250), (96, 19283), (98, 19292), (104, 19316), (119, 19385), (120, 19388), (126, 19406), (127, 19409), (129, 19415), (130, 19418), (136, 19478),

Gene: Periwinkle_29 Start: 21531, Stop: 21971, Start Num: 18

Candidate Starts for Periwinkle_29:

(Start: 18 @21531 has 24 MA's), (35, 21588), (Start: 50 @21615 has 1 MA's), (77, 21705), (86, 21738), (94, 21792), (95, 21795), (96, 21798), (98, 21807), (99, 21810), (104, 21831), (109, 21843), (115, 21888), (119, 21900), (121, 21906), (123, 21912), (124, 21915), (125, 21918), (128, 21927), (130, 21933), (132, 21960),

Gene: Petra_26 Start: 20781, Stop: 21155, Start Num: 25

Candidate Starts for Petra_26:

(Start: 25 @20781 has 46 MA's), (49, 20814), (55, 20829), (71, 20883), (74, 20892), (77, 20904), (91, 20976), (118, 21096), (120, 21102), (123, 21111),

Gene: Phabuloso_26 Start: 20818, Stop: 21258, Start Num: 18

Candidate Starts for Phabuloso_26:

(Start: 18 @20818 has 24 MA's), (35, 20875), (Start: 50 @20902 has 1 MA's), (77, 20992), (86, 21025), (94, 21079), (95, 21082), (96, 21085), (98, 21094), (99, 21097), (104, 21118), (109, 21130), (119, 21187), (121, 21193), (123, 21199), (124, 21202), (125, 21205), (128, 21214), (130, 21220), (132, 21247),

Gene: PhinkBoden_54 Start: 34212, Stop: 34667, Start Num: 22

Candidate Starts for PhinkBoden_54:

(19, 34197), (Start: 22 @34212 has 14 MA's), (30, 34239), (46, 34266), (58, 34296), (64, 34311), (76, 34359), (77, 34365), (79, 34371), (92, 34440), (98, 34467), (101, 34479), (113, 34557), (122, 34590), (123, 34593), (130, 34614),

Gene: Phistory_28 Start: 21852, Stop: 22292, Start Num: 18

Candidate Starts for Phistory_28:

(Start: 18 @21852 has 24 MA's), (35, 21909), (Start: 50 @21936 has 1 MA's), (77, 22026), (86, 22059), (94, 22113), (95, 22116), (96, 22119), (98, 22128), (99, 22131), (104, 22152), (109, 22164), (119, 22221), (121, 22227), (123, 22233), (124, 22236), (125, 22239), (128, 22248), (130, 22254), (132, 22281),

Gene: Phlop_42 Start: 35956, Stop: 36390, Start Num: 23

Candidate Starts for Phlop_42:

(15, 35896), (16, 35920), (Start: 23 @35956 has 14 MA's), (56, 36031), (Start: 66 @36061 has 44 MA's), (74, 36094), (78, 36109), (79, 36112), (101, 36220), (111, 36268), (113, 36277), (123, 36313), (125, 36319), (128, 36328),

Gene: Pickett_22 Start: 18266, Stop: 18634, Start Num: 66

Candidate Starts for Pickett_22:

(Start: 66 @18266 has 44 MA's), (74, 18293), (75, 18296), (77, 18305), (86, 18338), (88, 18365), (96, 18398), (98, 18407), (104, 18431), (119, 18500), (120, 18503), (125, 18518), (126, 18521), (129, 18530), (136, 18593),

Gene: PinkCoffee_45 Start: 36059, Stop: 36493, Start Num: 23

Candidate Starts for PinkCoffee_45:

(15, 35999), (16, 36023), (Start: 23 @36059 has 14 MA's), (56, 36134), (Start: 66 @36164 has 44 MA's), (74, 36197), (78, 36212), (79, 36215), (101, 36323), (111, 36371), (113, 36380), (123, 36416), (125, 36422), (128, 36431),

Gene: Pollux_26 Start: 21533, Stop: 21913, Start Num: 66

Candidate Starts for Pollux_26:

(Start: 66 @21533 has 44 MA's), (74, 21560), (75, 21563), (77, 21572), (86, 21605), (88, 21632), (96, 21665), (98, 21674), (104, 21698), (119, 21767), (120, 21770), (125, 21785), (126, 21788), (129, 21797), (136, 21860), (140, 21902),

Gene: Portcullis_44 Start: 35309, Stop: 35698, Start Num: 66

Candidate Starts for Portcullis_44:

(Start: 66 @35309 has 44 MA's), (74, 35336), (75, 35339), (77, 35348), (86, 35381), (88, 35408), (92, 35423), (96, 35441), (98, 35450), (104, 35474), (118, 35540), (119, 35543), (120, 35546), (125, 35561), (126, 35564), (129, 35573), (136, 35636),

Gene: PrincePatrick_24 Start: 21182, Stop: 21556, Start Num: 66

Candidate Starts for PrincePatrick_24:

(Start: 66 @21182 has 44 MA's), (75, 21218), (94, 21314), (95, 21317), (104, 21353), (121, 21428), (122, 21431), (126, 21443),

Gene: PullumCavea_42 Start: 35956, Stop: 36390, Start Num: 23

Candidate Starts for PullumCavea_42:

(15, 35896), (16, 35920), (Start: 23 @35956 has 14 MA's), (56, 36031), (Start: 66 @36061 has 44 MA's), (74, 36094), (78, 36109), (79, 36112), (101, 36220), (111, 36268), (113, 36277), (123, 36313), (125, 36319), (128, 36328),

Gene: REQ2_26 Start: 22510, Stop: 22854, Start Num: 62

Candidate Starts for REQ2_26:

(62, 22510), (Start: 67 @22528 has 1 MA's), (75, 22558), (78, 22570), (79, 22573), (83, 22588), (95, 22657), (118, 22759), (119, 22762), (123, 22774),

Gene: Ranch_40 Start: 31581, Stop: 31976, Start Num: 25

Candidate Starts for Ranch_40:

(Start: 25 @31581 has 46 MA's), (61, 31647), (76, 31701), (84, 31731), (92, 31782), (94, 31794), (102, 31824), (116, 31893), (123, 31914), (124, 31917), (128, 31929),

Gene: RayTheFireFly_26 Start: 22130, Stop: 22573, Start Num: 17

Candidate Starts for RayTheFireFly_26:

(1, 21734), (2, 21785), (5, 21920), (6, 21941), (16, 22118), (Start: 17 @22130 has 3 MA's), (29, 22178), (42, 22202), (55, 22229), (56, 22232), (58, 22238), (Start: 66 @22262 has 44 MA's), (69, 22274), (90, 22376), (95, 22397), (96, 22400), (98, 22409), (99, 22412), (103, 22427), (123, 22514),

Gene: Rem711_40 Start: 30711, Stop: 31142, Start Num: 50

Candidate Starts for Rem711_40:

(21, 30645), (27, 30669), (38, 30687), (Start: 50 @30711 has 1 MA's), (71, 30780), (77, 30801), (81, 30813), (93, 30879), (98, 30903), (121, 31002), (123, 31008), (132, 31059),

Gene: RogerDodger_46 Start: 36138, Stop: 36527, Start Num: 66

Candidate Starts for RogerDodger_46:

(Start: 66 @36138 has 44 MA's), (74, 36165), (75, 36168), (77, 36177), (86, 36210), (88, 36237), (92, 36252), (96, 36270), (98, 36279), (99, 36282), (104, 36303), (118, 36369), (119, 36372), (120, 36375), (125, 36390), (126, 36393), (129, 36402), (130, 36405), (136, 36465),

Gene: Rumi_40 Start: 30959, Stop: 31345, Start Num: 25

Candidate Starts for Rumi_40:

(Start: 25 @30959 has 46 MA's), (76, 31079), (84, 31109), (87, 31136), (92, 31160), (94, 31172), (102, 31202), (103, 31205), (116, 31271), (123, 31292), (124, 31295), (128, 31307),

Gene: Sadboi_41 Start: 33440, Stop: 33835, Start Num: 25

Candidate Starts for Sadboi_41:

(Start: 25 @33440 has 46 MA's), (61, 33506), (76, 33560), (84, 33590), (92, 33641), (94, 33653), (102, 33683), (116, 33752), (123, 33773), (124, 33776), (128, 33788),

Gene: Salvador_42 Start: 35807, Stop: 36196, Start Num: 66

Candidate Starts for Salvador_42:

(Start: 66 @35807 has 44 MA's), (74, 35834), (75, 35837), (77, 35846), (86, 35879), (88, 35906), (92, 35921), (96, 35939), (98, 35948), (104, 35972), (118, 36038), (119, 36041), (120, 36044), (125, 36059), (126, 36062), (129, 36071), (136, 36134),

Gene: Sampudon_40 Start: 33608, Stop: 34003, Start Num: 25

Candidate Starts for Sampudon_40:

(Start: 25 @33608 has 46 MA's), (61, 33674), (76, 33728), (84, 33758), (92, 33809), (94, 33821), (102, 33851), (116, 33920), (123, 33941), (124, 33944), (128, 33956),

Gene: Savbucketdawg_43 Start: 35588, Stop: 35977, Start Num: 66

Candidate Starts for Savbucketdawg_43:

(Start: 66 @35588 has 44 MA's), (74, 35615), (75, 35618), (77, 35627), (86, 35660), (88, 35687), (92, 35702), (96, 35720), (98, 35729), (104, 35753), (118, 35819), (119, 35822), (120, 35825), (125, 35840), (126, 35843), (129, 35852), (136, 35915),

Gene: Schnabeltier_25 Start: 21381, Stop: 21758, Start Num: 68

Candidate Starts for Schnabeltier_25:

(Start: 66 @21372 has 44 MA's), (Start: 68 @21381 has 1 MA's), (70, 21387), (75, 21408), (96, 21510), (98, 21519), (104, 21543), (119, 21612), (120, 21615), (124, 21627), (125, 21630), (126, 21633), (129, 21642), (139, 21741),

Gene: Shinji_43 Start: 35312, Stop: 35746, Start Num: 23

Candidate Starts for Shinji_43:

(15, 35252), (16, 35276), (Start: 23 @35312 has 14 MA's), (29, 35333), (42, 35357), (44, 35360), (56, 35387), (Start: 66 @35417 has 44 MA's), (78, 35465), (79, 35468), (81, 35474), (96, 35555), (101, 35576), (106, 35591), (111, 35624), (123, 35669), (125, 35675), (128, 35684), (134, 35723),

Gene: SmokingBunny_43 Start: 35861, Stop: 36295, Start Num: 23

Candidate Starts for SmokingBunny_43:

(15, 35801), (16, 35825), (Start: 23 @35861 has 14 MA's), (56, 35936), (Start: 66 @35966 has 44 MA's), (74, 35999), (78, 36014), (79, 36017), (101, 36125), (111, 36173), (113, 36182), (123, 36218), (125, 36224), (128, 36233),

Gene: Smoothie_56 Start: 34287, Stop: 34742, Start Num: 22

Candidate Starts for Smoothie_56:

(19, 34272), (Start: 22 @34287 has 14 MA's), (30, 34314), (46, 34341), (58, 34371), (64, 34386), (76, 34434), (77, 34440), (79, 34446), (92, 34515), (98, 34542), (101, 34554), (113, 34632), (122, 34665), (123, 34668), (130, 34689),

Gene: Spooky_27 Start: 21156, Stop: 21593, Start Num: 18

Candidate Starts for Spooky_27:

(Start: 18 @21156 has 24 MA's), (35, 21213), (Start: 50 @21240 has 1 MA's), (51, 21243), (52, 21246), (58, 21261), (63, 21273), (78, 21333), (86, 21363), (95, 21420), (96, 21423), (99, 21435), (102, 21447), (103, 21450), (104, 21456), (109, 21468), (114, 21504), (115, 21513), (119, 21525), (121, 21531), (123, 21537), (124, 21540), (125, 21543), (128, 21552), (130, 21558),

Gene: Squiddly_29 Start: 22568, Stop: 23005, Start Num: 18

Candidate Starts for Squiddly_29:

(Start: 18 @22568 has 24 MA's), (35, 22625), (Start: 50 @22652 has 1 MA's), (51, 22655), (52, 22658), (58, 22673), (63, 22685), (78, 22745), (86, 22775), (95, 22832), (96, 22835), (99, 22847), (102, 22859), (103, 22862), (104, 22868), (109, 22880), (114, 22916), (115, 22925), (119, 22937), (121, 22943), (123, 22949), (124, 22952), (125, 22955), (128, 22964), (130, 22970),

Gene: Suscepit_26 Start: 21932, Stop: 22306, Start Num: 25

Candidate Starts for Suscepit_26:

(14, 21848), (Start: 25 @21932 has 46 MA's), (55, 21980), (65, 22004), (Start: 66 @22010 has 44 MA's), (71, 22034), (74, 22043), (77, 22055), (118, 22247), (120, 22253), (121, 22256),

Gene: TChen_35 Start: 30090, Stop: 30461, Start Num: 48

Candidate Starts for TChen_35:

(Start: 26 @30057 has 1 MA's), (Start: 37 @30072 has 9 MA's), (Start: 48 @30090 has 1 MA's), (52, 30102), (54, 30105), (55, 30108), (57, 30114), (58, 30117), (59, 30120), (63, 30129), (Start: 66 @30141 has 44 MA's), (75, 30177), (76, 30180), (78, 30189), (79, 30192), (81, 30198), (86, 30219), (90, 30255), (94, 30273), (96, 30279), (97, 30285), (98, 30288), (99, 30291), (102, 30303), (104, 30312), (110, 30345), (111, 30348), (118, 30378), (123, 30393), (127, 30405),

Gene: TaronosaurusRx_25 Start: 21403, Stop: 21789, Start Num: 66

Candidate Starts for TaronosaurusRx_25:

(Start: 66 @21403 has 44 MA's), (Start: 68 @21412 has 1 MA's), (70, 21418), (78, 21451), (81, 21460), (96, 21541), (98, 21550), (104, 21574), (119, 21643), (120, 21646), (125, 21661), (126, 21664), (129, 21673), (130, 21676), (139, 21772),

Gene: Tayonia_26 Start: 21932, Stop: 22306, Start Num: 25

Candidate Starts for Tayonia_26:

(14, 21848), (Start: 25 @21932 has 46 MA's), (55, 21980), (65, 22004), (Start: 66 @22010 has 44 MA's), (71, 22034), (74, 22043), (77, 22055), (118, 22247), (120, 22253), (121, 22256),

Gene: ThetaBob_35 Start: 29008, Stop: 29412, Start Num: 26

Candidate Starts for ThetaBob_35:

(Start: 26 @29008 has 1 MA's), (35, 29020), (Start: 37 @29023 has 9 MA's), (45, 29038), (51, 29050), (55, 29059), (57, 29065), (63, 29080), (69, 29104), (75, 29128), (76, 29131), (77, 29137), (79, 29143), (81, 29149), (83, 29158), (84, 29161), (90, 29206), (94, 29224), (97, 29236), (98, 29239), (99, 29242), (103, 29257), (113, 29308), (117, 29326), (118, 29329), (123, 29344), (127, 29356),

Gene: Tillicus_39 Start: 32042, Stop: 32440, Start Num: 25

Candidate Starts for Tillicus_39:

(Start: 25 @32042 has 46 MA's), (71, 32147), (75, 32159), (76, 32162), (81, 32180), (87, 32219), (91, 32240), (99, 32273), (102, 32285), (115, 32351), (118, 32360), (121, 32369), (123, 32375), (128, 32390),

Gene: TillyBobJoe_43 Start: 35665, Stop: 36099, Start Num: 23

Candidate Starts for TillyBobJoe_43:

(15, 35605), (16, 35629), (Start: 23 @35665 has 14 MA's), (56, 35740), (Start: 66 @35770 has 44 MA's), (74, 35803), (78, 35818), (79, 35821), (101, 35929), (111, 35977), (113, 35986), (123, 36022), (125, 36028), (128, 36037),

Gene: TinyDot_24 Start: 18787, Stop: 19161, Start Num: 66

Candidate Starts for TinyDot_24:

(12, 18565), (13, 18595), (Start: 66 @18787 has 44 MA's), (69, 18799), (70, 18802), (75, 18823), (76, 18826), (94, 18919), (100, 18940), (101, 18946), (104, 18958), (120, 19030), (122, 19036), (125, 19045), (126, 19048), (136, 19120), (137, 19135),

Gene: Togo_42 Start: 35861, Stop: 36295, Start Num: 23

Candidate Starts for Togo_42:

(15, 35801), (16, 35825), (Start: 23 @35861 has 14 MA's), (56, 35936), (Start: 66 @35966 has 44 MA's), (74, 35999), (78, 36014), (79, 36017), (101, 36125), (111, 36173), (113, 36182), (123, 36218), (125, 36224), (128, 36233),

Gene: Toniann_54 Start: 33774, Stop: 34229, Start Num: 22

Candidate Starts for Toniann_54:

(19, 33759), (Start: 22 @33774 has 14 MA's), (30, 33801), (46, 33828), (58, 33858), (64, 33873), (76, 33921), (77, 33927), (79, 33933), (92, 34002), (98, 34029), (101, 34041), (113, 34119), (122, 34152), (123, 34155), (130, 34176),

Gene: Toron_36 Start: 29915, Stop: 30304, Start Num: 37

Candidate Starts for Toron_36:

(20, 29876), (Start: 26 @29900 has 1 MA's), (Start: 37 @29915 has 9 MA's), (55, 29951), (57, 29957), (58, 29960), (59, 29963), (63, 29972), (69, 29996), (76, 30023), (79, 30035), (90, 30098), (94, 30116), (96, 30122), (97, 30128), (98, 30131), (99, 30134), (102, 30146), (103, 30149), (115, 30212), (118, 30221), (123, 30236), (127, 30248),

Gene: Trumpet_26 Start: 21932, Stop: 22306, Start Num: 25

Candidate Starts for Trumpet_26:

(14, 21848), (Start: 25 @21932 has 46 MA's), (55, 21980), (65, 22004), (Start: 66 @22010 has 44 MA's), (71, 22034), (74, 22043), (77, 22055), (118, 22247), (120, 22253), (121, 22256),

Gene: Twister6_45 Start: 35701, Stop: 36090, Start Num: 66

Candidate Starts for Twister6_45:

(Start: 66 @35701 has 44 MA's), (74, 35728), (75, 35731), (77, 35740), (86, 35773), (88, 35800), (92, 35815), (96, 35833), (98, 35842), (104, 35866), (118, 35932), (119, 35935), (120, 35938), (125, 35953), (126, 35956), (129, 35965), (136, 36028),

Gene: Valary_45 Start: 36743, Stop: 37132, Start Num: 66

Candidate Starts for Valary_45:

(Start: 66 @36743 has 44 MA's), (74, 36770), (75, 36773), (77, 36782), (86, 36815), (88, 36842), (92, 36857), (96, 36875), (98, 36884), (99, 36887), (104, 36908), (118, 36974), (119, 36977), (120, 36980), (125, 36995), (126, 36998), (129, 37007), (130, 37010), (136, 37070),

Gene: VanDeWege_46 Start: 36035, Stop: 36424, Start Num: 66

Candidate Starts for VanDeWege_46:

(Start: 66 @36035 has 44 MA's), (74, 36062), (75, 36065), (77, 36074), (86, 36107), (88, 36134), (92, 36149), (96, 36167), (98, 36176), (99, 36179), (104, 36200), (118, 36266), (119, 36269), (120, 36272), (125, 36287), (126, 36290), (129, 36299), (130, 36302), (136, 36362),

Gene: Whack_25 Start: 21433, Stop: 21819, Start Num: 67

Candidate Starts for Whack_25:

(41, 21367), (53, 21391), (62, 21415), (Start: 67 @21433 has 1 MA's), (77, 21472), (106, 21601), (107, 21604), (112, 21640), (123, 21679),

Gene: Whitney_28 Start: 21973, Stop: 22413, Start Num: 18

Candidate Starts for Whitney_28:

(Start: 18 @21973 has 24 MA's), (35, 22030), (Start: 50 @22057 has 1 MA's), (77, 22147), (86, 22180), (94, 22234), (95, 22237), (96, 22240), (98, 22249), (99, 22252), (104, 22273), (109, 22285), (119, 22342), (121, 22348), (123, 22354), (124, 22357), (125, 22360), (128, 22369), (130, 22375), (132, 22402),

Gene: William_25 Start: 20929, Stop: 21303, Start Num: 66

Candidate Starts for William_25:

(Start: 66 @20929 has 44 MA's), (75, 20965), (94, 21061), (95, 21064), (104, 21100), (121, 21175), (122, 21178), (126, 21190),

Gene: WilliamBoone_54 Start: 33126, Stop: 33575, Start Num: 22

Candidate Starts for WilliamBoone_54:

(19, 33111), (Start: 22 @33126 has 14 MA's), (46, 33174), (58, 33204), (63, 33216), (71, 33252), (76, 33267), (92, 33348), (94, 33360), (109, 33432), (113, 33465), (123, 33501), (130, 33522),

Gene: Wizard_42 Start: 35941, Stop: 36330, Start Num: 66

Candidate Starts for Wizard_42:

(Start: 66 @35941 has 44 MA's), (74, 35968), (75, 35971), (77, 35980), (86, 36013), (88, 36040), (92, 36055), (96, 36073), (98, 36082), (99, 36085), (104, 36106), (118, 36172), (119, 36175), (120, 36178), (125, 36193), (126, 36196), (129, 36205), (130, 36208), (136, 36268),

Gene: Wojtek_39 Start: 32308, Stop: 32703, Start Num: 25

Candidate Starts for Wojtek_39:

(Start: 25 @32308 has 46 MA's), (61, 32374), (76, 32428), (84, 32458), (92, 32509), (94, 32521), (116, 32620), (123, 32641), (124, 32644), (128, 32656),

Gene: Yeezy_26 Start: 21154, Stop: 21528, Start Num: 25

Candidate Starts for Yeezy_26:

(14, 21070), (Start: 25 @21154 has 46 MA's), (55, 21202), (65, 21226), (Start: 66 @21232 has 44 MA's), (71, 21256), (74, 21265), (77, 21277), (118, 21469), (120, 21475), (121, 21478),

Gene: Yikes_41 Start: 33687, Stop: 34082, Start Num: 25

Candidate Starts for Yikes_41:

(Start: 25 @33687 has 46 MA's), (61, 33753), (76, 33807), (84, 33837), (92, 33888), (94, 33900), (102, 33930), (116, 33999), (123, 34020), (124, 34023), (128, 34035),

Gene: Yoshi_42 Start: 29099, Stop: 29485, Start Num: 37

Candidate Starts for Yoshi_42:

(Start: 26 @29084 has 1 MA's), (35, 29096), (Start: 37 @29099 has 9 MA's), (54, 29132), (55, 29135), (56, 29138), (57, 29141), (59, 29147), (60, 29150), (69, 29180), (73, 29198), (75, 29204), (81, 29225), (82, 29231), (86, 29246), (94, 29300), (96, 29306), (97, 29312), (98, 29315), (99, 29318), (103, 29333), (110, 29372), (113, 29384), (117, 29402), (123, 29420), (127, 29432),

Gene: YungMoney_46 Start: 38304, Stop: 38738, Start Num: 23

Candidate Starts for YungMoney_46:

(15, 38244), (16, 38268), (Start: 23 @38304 has 14 MA's), (29, 38325), (42, 38349), (44, 38352), (Start: 50 @38364 has 1 MA's), (56, 38379), (59, 38388), (Start: 66 @38409 has 44 MA's), (78, 38457), (79, 38460), (81, 38466), (96, 38547), (101, 38568), (106, 38583), (111, 38616), (123, 38661), (125, 38667), (128, 38676), (134, 38715),

Gene: ZAYM_26 Start: 21872, Stop: 22258, Start Num: 66

Candidate Starts for ZAYM_26:

(Start: 66 @21872 has 44 MA's), (Start: 68 @21881 has 1 MA's), (70, 21887), (78, 21920), (81, 21929), (88, 21977), (96, 22010), (98, 22019), (104, 22043), (119, 22112), (120, 22115), (125, 22130), (126, 22133), (129, 22142), (130, 22145), (139, 22241),

Gene: Zameen_26 Start: 21932, Stop: 22306, Start Num: 25

Candidate Starts for Zameen_26:

(14, 21848), (Start: 25 @21932 has 46 MA's), (55, 21980), (65, 22004), (Start: 66 @22010 has 44 MA's), (71, 22034), (74, 22043), (77, 22055), (118, 22247), (120, 22253), (121, 22256),

Gene: Zany_39 Start: 33212, Stop: 33607, Start Num: 25

Candidate Starts for Zany_39:

(Start: 25 @33212 has 46 MA's), (61, 33278), (76, 33332), (92, 33413), (94, 33425), (102, 33455), (116, 33524), (123, 33545), (124, 33548), (128, 33560),

Gene: Zapner_42 Start: 30180, Stop: 30569, Start Num: 37

Candidate Starts for Zapner_42:

(Start: 26 @30165 has 1 MA's), (35, 30177), (Start: 37 @30180 has 9 MA's), (45, 30195), (51, 30207), (55, 30216), (57, 30222), (63, 30237), (69, 30261), (75, 30285), (76, 30288), (77, 30294), (79, 30300), (81, 30306), (83, 30315), (84, 30318), (90, 30363), (94, 30381), (97, 30393), (98, 30396), (99, 30399), (103, 30414), (113, 30465), (117, 30483), (118, 30486), (123, 30501), (127, 30513),