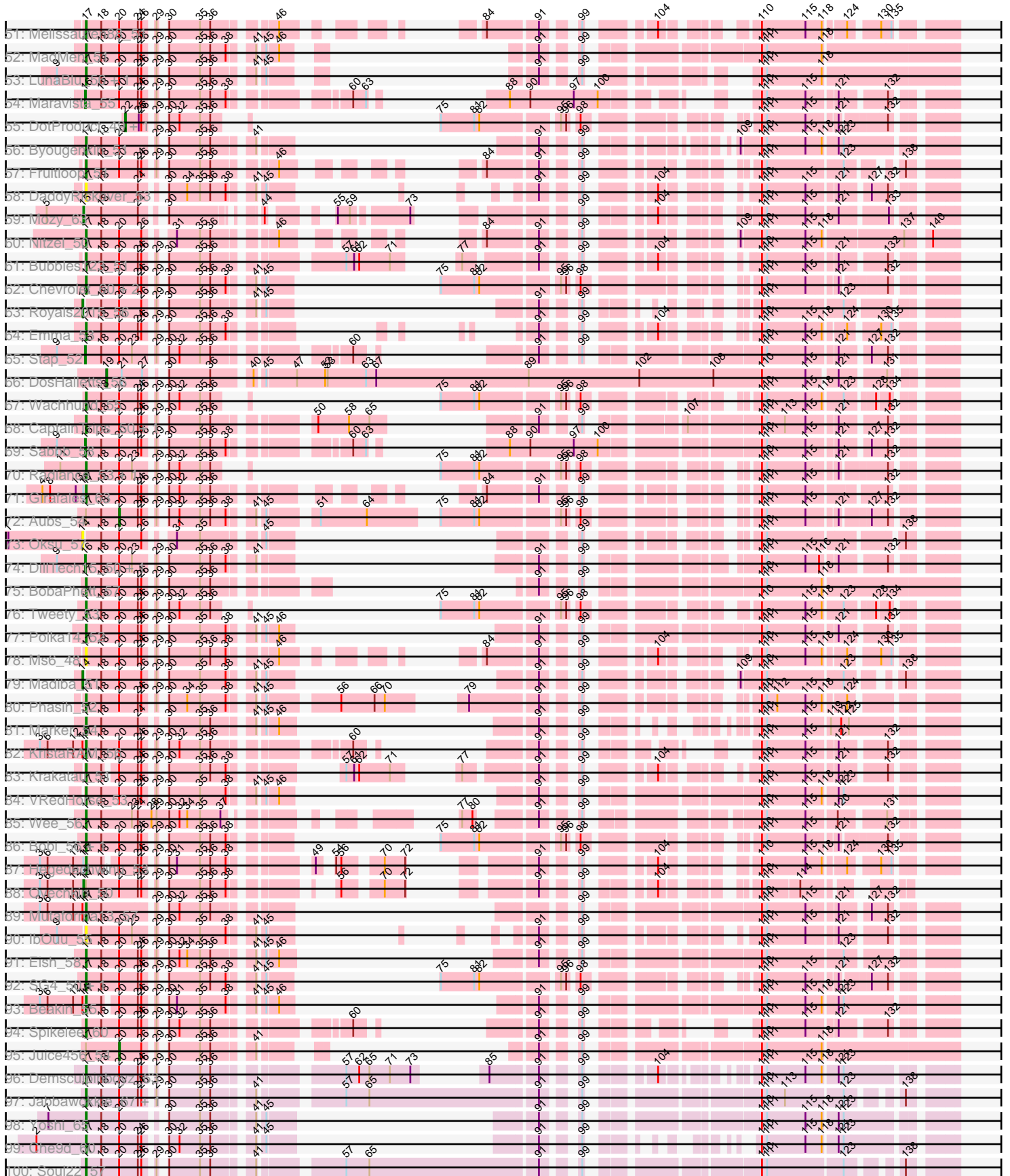
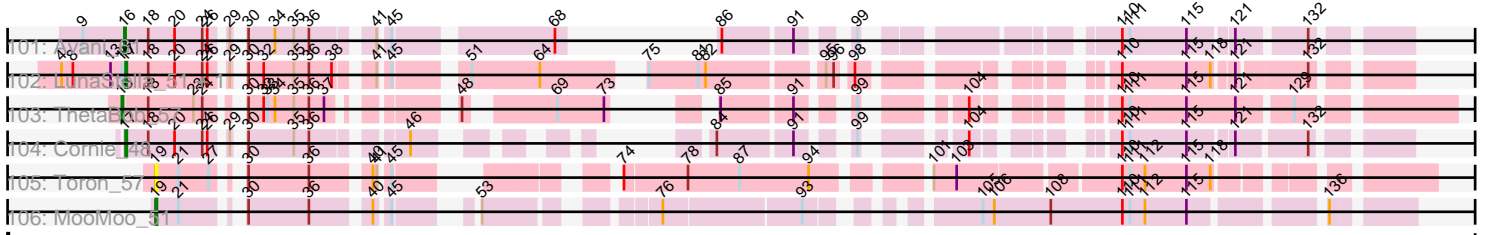




Pham 195434



Pham 195434



Note: Tracks are now grouped by subcluster and scaled. Switching in subcluster is indicated by changes in track color. Track scale is now set by default to display the region 30 bp upstream of start 1 to 30 bp downstream of the last possible start. If this default region is judged to be packed too tightly with annotated starts, the track will be further scaled to only show that region of the ORF with annotated starts. This action will be indicated by adding "Zoomed" to the title. For starts, yellow indicates the location of called starts comprised solely of Glimmer/GeneMark auto-annotations, green indicates the location of called starts with at least 1 manual gene annotation.

## Pham 195434 Report

This analysis was run 12/09/24 on database version 580.

Pham number 195434 has 184 members, 7 are drafts.

Phages represented in each track:

- Track 1 : Jinglebell\_58, Ochi17\_56, Llama\_58, Modragons\_57, Seabastian\_58, AlpineSix\_58, OfUltron\_58
- Track 2 : Philus\_57, DRBy19\_57
- Track 3 : Cabrinians\_55, Burwell21\_52, Jarcob\_54, Martik\_54, Lizziana\_60, Koella\_48, ShowerHandel\_57, ShiLan\_53, NormanBulbieJr\_54, FreddyB\_55, Crumble\_49, Priscilla\_54, Yorick\_53
- Track 4 : Quico\_62, Florinda\_65
- Track 5 : Poenanya\_53, Doomphist\_53
- Track 6 : Deb65\_49, Nimbo\_48, Scottish\_52, Leperchaun\_46, Daenerys\_48, PHappiness\_49, RitaG\_49, Geralt\_49, JoeyJr\_49, Pacc40\_48, Empress\_52, KingMidas\_53
- Track 7 : Sandalphon\_55
- Track 8 : Minnie\_58
- Track 9 : SwagPiggett\_59, LilMoolah\_52, Nivrat\_50
- Track 10 : Gandalph\_56, Mova\_54
- Track 11 : Fancypants\_56
- Track 12 : Whouxphf\_51
- Track 13 : Cornucopia\_56, Ardmore\_45, OwlsT2W\_54
- Track 14 : Phatniss\_52, Llij\_50, Drago\_52, DirtMcgirt\_53, UncleRicky\_53
- Track 15 : Alexphander\_58
- Track 16 : Moonbeam\_49
- Track 17 : Hades\_54
- Track 18 : Pollywog\_54
- Track 19 : Job42\_56
- Track 20 : Chuckly\_56
- Track 21 : Seagreen\_53
- Track 22 : Brocalys\_49, Clifton\_49, LastJedi\_48, Pippy\_52
- Track 23 : Sarma624\_51, Velveteen\_48, Kingsley\_50, BigPhil\_49, Coco12\_52, Cerasum\_49
- Track 24 : lbhubesi\_53
- Track 25 : DLane\_49
- Track 26 : Spoonbill\_51
- Track 27 : Karhdo\_51
- Track 28 : EleanorGeorge\_52
- Track 29 : Blexus\_51, Kersh\_55, Tootsieroll\_55, Ramsey\_54
- Track 30 : StAnnes\_52
- Track 31 : Whatsapiecost\_54, Rockne\_54, PMC\_50, Boomer\_58

- Track 32 : ShroomBoi\_55
- Track 33 : Estave1\_56
- Track 34 : Firehouse51\_54
- Track 35 : Hamulus\_54
- Track 36 : DeadP\_59, Taj\_57
- Track 37 : Ogopogo\_58
- Track 38 : Sassafras\_51, Inventum\_48
- Track 39 : Girr\_52, Leozinho\_53, Ruby\_50, MisterCuddles\_52
- Track 40 : Kimberlium\_55, QuickMath\_54, SiSi\_51, Mantra\_49, MulchExplorer\_59, Plumbus\_55
- Track 41 : Kenuha5\_51
- Track 42 : OldBen\_51
- Track 43 : Dante\_54
- Track 44 : Akhila\_45, MilanaBonita\_44
- Track 45 : Che8\_56
- Track 46 : Mahavrat\_51
- Track 47 : Starcevich\_53
- Track 48 : SimranZ1\_53
- Track 49 : Zizzle\_58
- Track 50 : Gorge\_58, Saal\_56
- Track 51 : Melissauren88\_51
- Track 52 : MadMen\_51
- Track 53 : LunaBlu\_56, Galactic\_53
- Track 54 : Maravista\_55
- Track 55 : DotProduct\_49, GigiOuiOui\_50
- Track 56 : Byougenkin\_51
- Track 57 : Fruitloop\_51
- Track 58 : DaddyRickover\_53
- Track 59 : Mozy\_63
- Track 60 : Nitzel\_50
- Track 61 : Bubbles123\_51
- Track 62 : Chevrolet\_60, ArcusAngelus\_57, Lorde\_54
- Track 63 : Royals2015\_56
- Track 64 : Emma\_53
- Track 65 : Stap\_52
- Track 66 : DosHalletts\_56
- Track 67 : Wachhund\_55
- Track 68 : CaptainTrips\_50, MinionDave\_52
- Track 69 : Sabbb\_58
- Track 70 : Radiance\_53, BodEinwohner17\_54
- Track 71 : Girafales\_63
- Track 72 : Aubs\_54
- Track 73 : Oksu\_57
- Track 74 : DillTech15\_50, Fastidio\_53
- Track 75 : BobaPhett\_57
- Track 76 : Tweety\_53
- Track 77 : Polka14\_52
- Track 78 : Ms6\_48
- Track 79 : Madiba\_51
- Track 80 : Phasih\_52
- Track 81 : Marker\_54
- Track 82 : KristaRAM\_56
- Track 83 : Krakatau\_51

- Track 84 : VRedHorse\_53
- Track 85 : Wee\_56
- Track 86 : Bobi\_56, Harley\_55
- Track 87 : Hegedechwinu\_53
- Track 88 : Ovechkin\_50
- Track 89 : Mutaforma13\_57
- Track 90 : IbOuu\_55
- Track 91 : Eish\_58
- Track 92 : SG4\_50, Enby\_54
- Track 93 : Beakin\_55
- Track 94 : Spikelee\_60
- Track 95 : Juice456\_54
- Track 96 : Demsculpinboyz\_63
- Track 97 : Jabbawokkie\_67, Zapner\_66
- Track 98 : Yoshi\_65
- Track 99 : Che9d\_60
- Track 100 : Soul22\_57
- Track 101 : Avani\_61
- Track 102 : LunaStella\_51, TChen\_53
- Track 103 : ThetaBob\_57
- Track 104 : Cornie\_48
- Track 105 : Toron\_57
- Track 106 : MooMoo\_51

***Summary of Final Annotations (See graph section above for start numbers):***

The start number called the most often in the published annotations is 17, it was called in 135 of the 177 non-draft genes in the pham.

Genes that call this "Most Annotated" start:

• Akhila\_45, Alexphander\_58, AlpineSix\_58, ArcusAngelus\_57, Ardmore\_45, Beakin\_55, BigPhil\_49, BobaPhett\_57, Bobi\_56, BodEinwohner17\_54, Boomer\_58, Brocalys\_49, Bubbles123\_51, Burwell21\_52, Byougenkin\_51, Cabrinians\_55, CaptainTrips\_50, Cerasum\_49, Che8\_56, Che9d\_60, Chevrolet\_60, Chuckly\_56, Clifton\_49, Coco12\_52, Cornie\_48, Cornucopia\_56, Crumble\_49, DLane\_49, DRBy19\_57, DaddyRickover\_53, Dante\_54, DeadP\_59, Demsculpinboyz\_63, DirtMcgirt\_53, Doomphist\_53, Drago\_52, Eish\_58, EleanorGeorge\_52, Emma\_53, Enby\_54, Firehouse51\_54, FreddyB\_55, Fruitloop\_51, Galactic\_53, Gandalph\_56, Girafales\_63, Girr\_52, Gorge\_58, Hades\_54, Hamulus\_54, Harley\_55, Hegedechwinu\_53, IbOuu\_55, Ibhubesi\_53, Inventum\_48, Jabbawokkie\_67, Jacob\_54, Jinglebell\_58, Karhdo\_51, Kenuha5\_51, Kimberlium\_55, Kingsley\_50, Koella\_48, Krakatau\_51, KristaRAM\_56, LastJedi\_48, Leozinho\_53, LilMoolah\_52, Lizziana\_60, Llama\_58, Llij\_50, Lorde\_54, LunaBlu\_56, LunaStella\_51, MadMen\_51, Mantra\_49, Marker\_54, Martik\_54, Melissauren88\_51, MilanaBonita\_44, MinionDave\_52, Minnie\_58, MisterCuddles\_52, Modragons\_57, Moonbeam\_49, Mova\_54, Ms6\_48, MulchExplorer\_59, Mutaforma13\_57, Nitzel\_50, Nivrat\_50, NormanBulbieJr\_54, Ochi17\_56, OfUltron\_58, Ogopogo\_58, OldBen\_51, OwlsT2W\_54, PMC\_50, Phasih\_52, Phatniss\_52, Philus\_57, Pippy\_52, Plumbus\_55, Poenanya\_53, Polka14\_52, Pollywog\_54, Priscilla\_54, QuickMath\_54, Radiance\_53, Rockne\_54, Ruby\_50, SG4\_50, Saal\_56, Sandalphon\_55, Sarma624\_51,

Sassafras\_51, Seabastian\_58, Seagreen\_53, ShiLan\_53, ShowerHandel\_57, SiSi\_51, Soul22\_57, Spikelee\_60, StAnnes\_52, Starcevich\_53, SwagPigglett\_59, TChen\_53, Taj\_57, Tweety\_53, UncleRicky\_53, VRedHorse\_53, Velveteen\_48, Wachhund\_55, Wee\_56, Whatsapiecost\_54, Whouxphf\_51, Yorick\_53, Yoshi\_65, Zapner\_66, Zizzle\_58,

Genes that have the "Most Annotated" start but do not call it:

- Aubs\_54, Juice456\_54, Ovechkin\_50,

Genes that do not have the "Most Annotated" start:

- Avani\_61, Blexus\_51, Daenerys\_48, Deb65\_49, DillTech15\_50, DosHalletts\_56, DotProduct\_49, Empress\_52, Estave1\_56, Fancypants\_56, Fastidio\_53, Florinda\_65, Geralt\_49, GigiOuiOui\_50, Job42\_56, JoeyJr\_49, Kersh\_55, KingMidas\_53, Leperchaun\_46, Madiba\_51, Mahavrat\_51, Maravista\_55, MooMoo\_51, Mozy\_63, Nimbo\_48, Oksu\_57, PHappiness\_49, Pacc40\_48, Quico\_62, Ramsey\_54, RitaG\_49, Royals2015\_56, Sabbb\_58, Scottish\_52, ShroomBoi\_55, SimranZ1\_53, Spoonbill\_51, Stap\_52, ThetaBob\_57, Tootsieroll\_55, Toron\_57,

### Summary by start number:

Start 14:

- Found in 9 of 184 ( 4.9% ) of genes in pham
- Manual Annotations of this start: 5 of 177
- Called 66.7% of time when present
- Phage (with cluster) where this start called: Fancypants\_56 (F1), Madiba\_51 (F1), Mahavrat\_51 (F1), Oksu\_57 (F1), Royals2015\_56 (F1), SimranZ1\_53 (F1),

Start 15:

- Found in 8 of 184 ( 4.3% ) of genes in pham
- Manual Annotations of this start: 4 of 177
- Called 50.0% of time when present
- Phage (with cluster) where this start called: Estave1\_56 (F1), Mozy\_63 (F1), Ovechkin\_50 (F1), ThetaBob\_57 (F4),

Start 16:

- Found in 27 of 184 ( 14.7% ) of genes in pham
- Manual Annotations of this start: 27 of 177
- Called 100.0% of time when present
- Phage (with cluster) where this start called: Avani\_61 (F2), Blexus\_51 (F1), Daenerys\_48 (F1), Deb65\_49 (F1), DillTech15\_50 (F1), Empress\_52 (F1), Fastidio\_53 (F1), Florinda\_65 (F1), Geralt\_49 (F1), Job42\_56 (F1), JoeyJr\_49 (F1), Kersh\_55 (F1), KingMidas\_53 (F1), Leperchaun\_46 (F1), Maravista\_55 (F1), Nimbo\_48 (F1), PHappiness\_49 (F1), Pacc40\_48 (F1), Quico\_62 (F1), Ramsey\_54 (F1), RitaG\_49 (F1), Sabbb\_58 (F1), Scottish\_52 (F1), ShroomBoi\_55 (F1), Spoonbill\_51 (F1), Stap\_52 (F1), Tootsieroll\_55 (F1),

Start 17:

- Found in 143 of 184 ( 77.7% ) of genes in pham
- Manual Annotations of this start: 135 of 177
- Called 97.9% of time when present
- Phage (with cluster) where this start called: Akhila\_45 (F1), Alexphander\_58 (F1), AlpineSix\_58 (F1), ArcusAngelus\_57 (F1), Ardmore\_45 (F1), Beakin\_55 (F1), BigPhil\_49 (F1), BobaPhett\_57 (F1), Bobi\_56 (F1), BodEinwohner17\_54 (F1),

Boomer\_58 (F1), Brocalys\_49 (F1), Bubbles123\_51 (F1), Burwell21\_52 (F1), Byougenkin\_51 (F1), Cabrinians\_55 (F1), CaptainTrips\_50 (F1), Cerasum\_49 (F1), Che8\_56 (F1), Che9d\_60 (F2), Chevrolet\_60 (F1), Chuckly\_56 (F1), Clifton\_49 (F1), Coco12\_52 (F1), Cornie\_48 (F5), Cornucopia\_56 (F1), Crumble\_49 (F1), DLane\_49 (F1), DRBy19\_57 (F1), DaddyRickover\_53 (F1), Dante\_54 (F1), DeadP\_59 (F1), Demsculpinboyz\_63 (F2), DirtMcgirt\_53 (F1), Doomphist\_53 (F1), Drago\_52 (F1), Eish\_58 (F1), EleanorGeorge\_52 (F1), Emma\_53 (F1), Enby\_54 (F1), Firehouse51\_54 (F1), FreddyB\_55 (F1), Fruitloop\_51 (F1), Galactic\_53 (F1), Gandolph\_56 (F1), Girafales\_63 (F1), Girr\_52 (F1), Gorge\_58 (F1), Hades\_54 (F1), Hamulus\_54 (F1), Harley\_55 (F1), Hegedechwinu\_53 (F1), IbOuu\_55 (F1), Ibhubesi\_53 (F1), Inventum\_48 (F1), Jabbawokkie\_67 (F2), Jacob\_54 (F1), Jinglebell\_58 (F1), Karhdo\_51 (F1), Kenuha5\_51 (F1), Kimberlium\_55 (F1), Kingsley\_50 (F1), Koella\_48 (F1), Krakatau\_51 (F1), KristaRAM\_56 (F1), LastJedi\_48 (F1), Leozinho\_53 (F1), LiiMoolah\_52 (F1), Lizziana\_60 (F1), Llama\_58 (F1), Llij\_50 (F1), Lorde\_54 (F1), LunaBlu\_56 (F1), LunaStella\_51 (F4), MadMen\_51 (F1), Mantra\_49 (F1), Marker\_54 (F1), Martik\_54 (F1), Melissauren88\_51 (F1), MilanaBonita\_44 (F1), MinionDave\_52 (F1), Minnie\_58 (F1), MisterCuddles\_52 (F1), Modragons\_57 (F1), Moonbeam\_49 (F1), Mova\_54 (F1), Ms6\_48 (F1), MulchExplorer\_59 (F1), Mutaforma13\_57 (F1), Nitzel\_50 (F1), Nivrat\_50 (F1), NormanBulbieJr\_54 (F1), Ochi17\_56 (F1), OfUltron\_58 (F1), Ogoopogo\_58 (F1), OldBen\_51 (F1), OwlsT2W\_54 (F1), PMC\_50 (F1), Phasih\_52 (F1), Phatniss\_52 (F1), Philus\_57 (F1), Pippy\_52 (F1), Plumbus\_55 (F1), Poenanya\_53 (F1), Polka14\_52 (F1), Pollywog\_54 (F1), Priscilla\_54 (F1), QuickMath\_54 (F1), Radiance\_53 (F1), Rockne\_54 (F1), Ruby\_50 (F1), SG4\_50 (F1), Saal\_56 (F1), Sandalphon\_55 (F1), Sarma624\_51 (F1), Sassafras\_51 (F1), Seabastian\_58 (F1), Seagreen\_53 (F1), ShiLan\_53 (F1), ShowerHandel\_57 (F1), SiSi\_51 (F1), Soul22\_57 (F2), Spikelee\_60 (F1), StAnnes\_52 (F1), Starcevic\_53 (F1), SwagPigglett\_59 (F1), TChen\_53 (F4), Taj\_57 (F1), Tweety\_53 (F1), UncleRicky\_53 (F1), VRedHorse\_53 (F1), Velveteen\_48 (F1), Wachhund\_55 (F1), Wee\_56 (F1), Whatsapiecost\_54 (F1), Whouxphf\_51 (F1), Yorick\_53 (F1), Yoshi\_65 (F2), Zapner\_66 (F2), Zizzle\_58 (F1),

Start 19:

- Found in 3 of 184 ( 1.6% ) of genes in pham
- Manual Annotations of this start: 2 of 177
- Called 100.0% of time when present
- Phage (with cluster) where this start called: DosHalletts\_56 (F1), MooMoo\_51 (singleton), Toron\_57 (F6),

Start 20:

- Found in 168 of 184 ( 91.3% ) of genes in pham
- Manual Annotations of this start: 2 of 177
- Called 1.2% of time when present
- Phage (with cluster) where this start called: Aubs\_54 (F1), Juice456\_54 (F1),

Start 22:

- Found in 2 of 184 ( 1.1% ) of genes in pham
- Manual Annotations of this start: 2 of 177
- Called 100.0% of time when present
- Phage (with cluster) where this start called: DotProduct\_49 (F1), GigiOuiOui\_50 (F1),

**Summary by clusters:**



There are 6 clusters represented in this pham: F1, F2, F4, F5, F6, singleton,

Info for manual annotations of cluster F1:

- Start number 14 was manually annotated 5 times for cluster F1.
- Start number 15 was manually annotated 3 times for cluster F1.
- Start number 16 was manually annotated 26 times for cluster F1.
- Start number 17 was manually annotated 126 times for cluster F1.
- Start number 19 was manually annotated 1 time for cluster F1.
- Start number 20 was manually annotated 2 times for cluster F1.
- Start number 22 was manually annotated 2 times for cluster F1.

Info for manual annotations of cluster F2:

- Start number 16 was manually annotated 1 time for cluster F2.
- Start number 17 was manually annotated 6 times for cluster F2.

Info for manual annotations of cluster F4:

- Start number 15 was manually annotated 1 time for cluster F4.
- Start number 17 was manually annotated 2 times for cluster F4.

Info for manual annotations of cluster F5:

- Start number 17 was manually annotated 1 time for cluster F5.

### ***Gene Information:***

Gene: Akhila\_45 Start: 33238, Stop: 33918, Start Num: 17

Candidate Starts for Akhila\_45:

(Start: 17 @33238 has 135 MA's), (18, 33256), (Start: 20 @33277 has 2 MA's), (24, 33298), (26, 33301), (29, 33310), (30, 33313), (35, 33349), (36, 33361), (46, 33418), (84, 33526), (91, 33580), (99, 33607), (104, 33661), (110, 33730), (111, 33736), (115, 33781), (121, 33811), (132, 33859),

Gene: Alexphander\_58 Start: 38096, Stop: 38746, Start Num: 17

Candidate Starts for Alexphander\_58:

(Start: 17 @38096 has 135 MA's), (18, 38114), (Start: 20 @38135 has 2 MA's), (24, 38156), (26, 38159), (29, 38168), (30, 38171), (32, 38183), (35, 38207), (36, 38219), (38, 38237), (84, 38384), (91, 38438), (99, 38465), (110, 38558), (111, 38564), (115, 38609), (121, 38639), (132, 38687),

Gene: AlpineSix\_58 Start: 39417, Stop: 40004, Start Num: 17

Candidate Starts for AlpineSix\_58:

(10, 39387), (Start: 17 @39417 has 135 MA's), (18, 39435), (Start: 20 @39456 has 2 MA's), (30, 39492), (35, 39528), (36, 39540), (38, 39558), (41, 39579), (46, 39597), (91, 39663), (99, 39690), (110, 39813), (111, 39819), (138, 39957),

Gene: ArcusAngelus\_57 Start: 38680, Stop: 39342, Start Num: 17

Candidate Starts for ArcusAngelus\_57:

(Start: 17 @38680 has 135 MA's), (18, 38698), (Start: 20 @38719 has 2 MA's), (24, 38740), (26, 38743), (29, 38752), (30, 38755), (35, 38791), (36, 38803), (38, 38821), (41, 38842), (45, 38848), (75, 38878), (81, 38917), (82, 38923), (95, 39004), (96, 39010), (98, 39019), (110, 39154), (111, 39160), (115, 39205), (121, 39235), (132, 39283),

Gene: Ardmore\_45 Start: 35444, Stop: 36049, Start Num: 17

Candidate Starts for Ardmore\_45:

(Start: 17 @35444 has 135 MA's), (18, 35462), (Start: 20 @35483 has 2 MA's), (24, 35504), (26, 35507), (29, 35516), (30, 35519), (32, 35531), (35, 35555), (36, 35567), (75, 35585), (81, 35624), (82, 35630), (95, 35711), (96, 35717), (98, 35726), (110, 35861), (111, 35867), (115, 35912), (121, 35942), (132, 35990),

Gene: Aubs\_54 Start: 37500, Stop: 38252, Start Num: 20

Candidate Starts for Aubs\_54:

(Start: 17 @37461 has 135 MA's), (18, 37479), (Start: 20 @37500 has 2 MA's), (24, 37521), (26, 37524), (29, 37533), (30, 37536), (32, 37548), (35, 37572), (36, 37584), (38, 37602), (41, 37623), (45, 37629), (51, 37674), (64, 37728), (75, 37788), (81, 37827), (82, 37833), (95, 37914), (96, 37920), (98, 37929), (110, 38064), (111, 38070), (115, 38115), (121, 38145), (127, 38175), (132, 38193),

Gene: Avani\_61 Start: 37581, Stop: 38282, Start Num: 16

Candidate Starts for Avani\_61:

(9, 37551), (Start: 16 @37581 has 27 MA's), (18, 37599), (Start: 20 @37620 has 2 MA's), (24, 37641), (26, 37644), (29, 37653), (30, 37656), (34, 37677), (35, 37692), (36, 37704), (41, 37743), (45, 37749), (68, 37860), (86, 37872), (91, 37920), (99, 37947), (110, 38094), (111, 38100), (115, 38145), (121, 38175), (132, 38223),

Gene: Beakin\_55 Start: 37066, Stop: 37683, Start Num: 17

Candidate Starts for Beakin\_55:

(3, 37015), (6, 37024), (12, 37054), (Start: 14 @37063 has 5 MA's), (Start: 17 @37066 has 135 MA's), (18, 37084), (Start: 20 @37096 has 2 MA's), (24, 37117), (26, 37120), (29, 37129), (30, 37132), (31, 37141), (35, 37168), (38, 37198), (41, 37219), (45, 37225), (46, 37237), (91, 37297), (99, 37324), (110, 37483), (111, 37489), (115, 37534), (118, 37552), (121, 37567), (123, 37573),

Gene: BigPhil\_49 Start: 33538, Stop: 34161, Start Num: 17

Candidate Starts for BigPhil\_49:

(Start: 17 @33538 has 135 MA's), (18, 33556), (Start: 20 @33577 has 2 MA's), (24, 33598), (26, 33601), (29, 33610), (30, 33613), (32, 33625), (34, 33634), (35, 33649), (36, 33661), (41, 33700), (45, 33706), (46, 33718), (91, 33784), (99, 33811), (110, 33970), (111, 33976), (123, 34060), (138, 34114),

Gene: Blexus\_51 Start: 37239, Stop: 37844, Start Num: 16

Candidate Starts for Blexus\_51:

(9, 37209), (Start: 16 @37239 has 27 MA's), (18, 37257), (Start: 20 @37269 has 2 MA's), (24, 37290), (26, 37293), (29, 37302), (30, 37305), (32, 37317), (34, 37326), (35, 37341), (38, 37371), (41, 37392), (45, 37398), (91, 37470), (99, 37497), (110, 37656), (111, 37662), (115, 37707), (121, 37737), (132, 37785),

Gene: BobaPhett\_57 Start: 40029, Stop: 40682, Start Num: 17

Candidate Starts for BobaPhett\_57:

(Start: 17 @40029 has 135 MA's), (18, 40047), (Start: 20 @40068 has 2 MA's), (24, 40089), (26, 40092), (29, 40101), (30, 40104), (35, 40140), (36, 40152), (91, 40275), (99, 40302), (110, 40461), (111, 40467), (118, 40530),

Gene: Bobi\_56 Start: 38447, Stop: 39109, Start Num: 17

Candidate Starts for Bobi\_56:

(Start: 17 @38447 has 135 MA's), (18, 38465), (Start: 20 @38486 has 2 MA's), (24, 38507), (26, 38510), (29, 38519), (30, 38522), (35, 38558), (36, 38570), (38, 38588), (75, 38645), (81, 38684), (82, 38690), (95, 38771), (96, 38777), (98, 38786), (110, 38921), (111, 38927), (115, 38972), (121, 39002), (132, 39050),

Gene: BodEinwohner17\_54 Start: 37181, Stop: 37786, Start Num: 17

Candidate Starts for BodEinwohner17\_54:

(11, 37151), (Start: 17 @37181 has 135 MA's), (18, 37199), (Start: 20 @37220 has 2 MA's), (23, 37235), (29, 37253), (30, 37256), (32, 37268), (35, 37292), (36, 37304), (75, 37322), (81, 37361), (82, 37367), (95, 37448), (96, 37454), (98, 37463), (110, 37598), (111, 37604), (115, 37649), (121, 37679), (132, 37727),

Gene: Boomer\_58 Start: 39232, Stop: 39855, Start Num: 17

Candidate Starts for Boomer\_58:

(Start: 17 @39232 has 135 MA's), (18, 39250), (Start: 20 @39271 has 2 MA's), (24, 39292), (26, 39295), (29, 39304), (30, 39307), (32, 39319), (34, 39328), (35, 39343), (36, 39355), (41, 39394), (45, 39400), (46, 39412), (91, 39478), (99, 39505), (110, 39664), (111, 39670), (123, 39754), (138, 39808),

Gene: Brocalys\_49 Start: 34514, Stop: 35161, Start Num: 17

Candidate Starts for Brocalys\_49:

(9, 34484), (Start: 17 @34514 has 135 MA's), (18, 34532), (Start: 20 @34553 has 2 MA's), (24, 34574), (26, 34577), (29, 34586), (30, 34589), (35, 34625), (36, 34637), (41, 34676), (91, 34754), (99, 34781), (110, 34940), (111, 34946), (118, 35009),

Gene: Bubbles123\_51 Start: 37879, Stop: 38607, Start Num: 17

Candidate Starts for Bubbles123\_51:

(Start: 17 @37879 has 135 MA's), (18, 37897), (Start: 20 @37918 has 2 MA's), (24, 37939), (26, 37942), (29, 37951), (30, 37954), (35, 37990), (36, 38002), (57, 38122), (61, 38131), (62, 38137), (71, 38173), (77, 38197), (91, 38269), (99, 38296), (104, 38350), (110, 38419), (111, 38425), (115, 38470), (121, 38500), (132, 38548),

Gene: Burwell21\_52 Start: 37612, Stop: 38259, Start Num: 17

Candidate Starts for Burwell21\_52:

(9, 37582), (Start: 17 @37612 has 135 MA's), (18, 37630), (Start: 20 @37651 has 2 MA's), (26, 37675), (29, 37684), (30, 37687), (35, 37723), (36, 37735), (41, 37774), (91, 37852), (99, 37879), (110, 38038), (111, 38044), (118, 38107),

Gene: Byougenkin\_51 Start: 37130, Stop: 37723, Start Num: 17

Candidate Starts for Byougenkin\_51:

(Start: 17 @37130 has 135 MA's), (18, 37148), (Start: 20 @37169 has 2 MA's), (29, 37202), (30, 37205), (35, 37241), (36, 37253), (41, 37292), (91, 37370), (99, 37397), (109, 37502), (110, 37523), (111, 37529), (115, 37574), (118, 37592), (121, 37607), (123, 37613),

Gene: Cabrinians\_55 Start: 37690, Stop: 38337, Start Num: 17

Candidate Starts for Cabrinians\_55:

(9, 37660), (Start: 17 @37690 has 135 MA's), (18, 37708), (Start: 20 @37729 has 2 MA's), (26, 37753), (29, 37762), (30, 37765), (35, 37801), (36, 37813), (41, 37852), (91, 37930), (99, 37957), (110, 38116), (111, 38122), (118, 38185),

Gene: CaptainTrips\_50 Start: 36293, Stop: 37006, Start Num: 17

Candidate Starts for CaptainTrips\_50:

(Start: 17 @36293 has 135 MA's), (18, 36311), (Start: 20 @36332 has 2 MA's), (24, 36353), (26, 36356), (29, 36365), (30, 36368), (35, 36404), (36, 36416), (50, 36503), (58, 36539), (65, 36563), (91, 36635), (99, 36662), (107, 36743), (110, 36818), (111, 36824), (113, 36845), (115, 36869), (121, 36899), (132, 36947),

Gene: Cerasum\_49 Start: 33556, Stop: 34179, Start Num: 17

Candidate Starts for Cerasum\_49:

(Start: 17 @33556 has 135 MA's), (18, 33574), (Start: 20 @33595 has 2 MA's), (24, 33616), (26, 33619), (29, 33628), (30, 33631), (32, 33643), (34, 33652), (35, 33667), (36, 33679), (41, 33718), (45, 33724), (46, 33736), (91, 33802), (99, 33829), (110, 33988), (111, 33994), (123, 34078), (138, 34132),

Gene: Che8\_56 Start: 38547, Stop: 39161, Start Num: 17

Candidate Starts for Che8\_56:

(Start: 17 @38547 has 135 MA's), (18, 38565), (Start: 20 @38586 has 2 MA's), (24, 38607), (29, 38619), (30, 38622), (34, 38643), (35, 38658), (41, 38709), (45, 38715), (46, 38727), (91, 38787), (99, 38814), (110, 38961), (111, 38967), (115, 39012), (118, 39030), (121, 39045), (123, 39051),

Gene: Che9d\_60 Start: 37007, Stop: 37564, Start Num: 17

Candidate Starts for Che9d\_60:

(2, 36953), (Start: 17 @37007 has 135 MA's), (18, 37025), (Start: 20 @37046 has 2 MA's), (24, 37067), (26, 37070), (30, 37082), (32, 37094), (35, 37118), (36, 37130), (41, 37169), (45, 37175), (91, 37253), (99, 37280), (110, 37364), (111, 37370), (115, 37415), (118, 37433), (121, 37448), (123, 37454),

Gene: Chevrolet\_60 Start: 38681, Stop: 39343, Start Num: 17

Candidate Starts for Chevrolet\_60:

(Start: 17 @38681 has 135 MA's), (18, 38699), (Start: 20 @38720 has 2 MA's), (24, 38741), (26, 38744), (29, 38753), (30, 38756), (35, 38792), (36, 38804), (38, 38822), (41, 38843), (45, 38849), (75, 38879), (81, 38918), (82, 38924), (95, 39005), (96, 39011), (98, 39020), (110, 39155), (111, 39161), (115, 39206), (121, 39236), (132, 39284),

Gene: Chuckly\_56 Start: 38038, Stop: 38685, Start Num: 17

Candidate Starts for Chuckly\_56:

(Start: 17 @38038 has 135 MA's), (18, 38056), (Start: 20 @38077 has 2 MA's), (24, 38098), (26, 38101), (29, 38110), (30, 38113), (35, 38149), (38, 38179), (41, 38200), (45, 38206), (46, 38218), (91, 38278), (99, 38305), (110, 38464), (111, 38470), (118, 38533),

Gene: Clifton\_49 Start: 34865, Stop: 35512, Start Num: 17

Candidate Starts for Clifton\_49:

(9, 34835), (Start: 17 @34865 has 135 MA's), (18, 34883), (Start: 20 @34904 has 2 MA's), (24, 34925), (26, 34928), (29, 34937), (30, 34940), (35, 34976), (36, 34988), (41, 35027), (91, 35105), (99, 35132), (110, 35291), (111, 35297), (118, 35360),

Gene: Coco12\_52 Start: 37613, Stop: 38236, Start Num: 17

Candidate Starts for Coco12\_52:

(Start: 17 @37613 has 135 MA's), (18, 37631), (Start: 20 @37652 has 2 MA's), (24, 37673), (26, 37676), (29, 37685), (30, 37688), (32, 37700), (34, 37709), (35, 37724), (36, 37736), (41, 37775), (45, 37781), (46, 37793), (91, 37859), (99, 37886), (110, 38045), (111, 38051), (123, 38135), (138, 38189),

Gene: Cornie\_48 Start: 35673, Stop: 36353, Start Num: 17

Candidate Starts for Cornie\_48:

(Start: 17 @35673 has 135 MA's), (18, 35691), (Start: 20 @35712 has 2 MA's), (24, 35733), (26, 35736), (29, 35745), (30, 35748), (35, 35784), (36, 35796), (46, 35853), (84, 35961), (91, 36015), (99, 36042), (104, 36096), (110, 36165), (111, 36171), (115, 36216), (121, 36246), (132, 36294),

Gene: Cornucopia\_56 Start: 38383, Stop: 38988, Start Num: 17

Candidate Starts for Cornucopia\_56:

(Start: 17 @38383 has 135 MA's), (18, 38401), (Start: 20 @38422 has 2 MA's), (24, 38443), (26, 38446), (29, 38455), (30, 38458), (32, 38470), (35, 38494), (36, 38506), (75, 38524), (81, 38563), (82, 38569), (95, 38650), (96, 38656), (98, 38665), (110, 38800), (111, 38806), (115, 38851), (121, 38881),

(132, 38929),

Gene: Crumble\_49 Start: 33626, Stop: 34273, Start Num: 17

Candidate Starts for Crumble\_49:

(9, 33596), (Start: 17 @33626 has 135 MA's), (18, 33644), (Start: 20 @33665 has 2 MA's), (26, 33689), (29, 33698), (30, 33701), (35, 33737), (36, 33749), (41, 33788), (91, 33866), (99, 33893), (110, 34052), (111, 34058), (118, 34121),

Gene: DLane\_49 Start: 36378, Stop: 37049, Start Num: 17

Candidate Starts for DLane\_49:

(Start: 17 @36378 has 135 MA's), (18, 36396), (Start: 20 @36417 has 2 MA's), (24, 36438), (26, 36441), (29, 36450), (30, 36453), (35, 36489), (36, 36501), (46, 36558), (84, 36666), (91, 36720), (99, 36747), (110, 36870), (111, 36876), (123, 36960), (138, 37002),

Gene: DRBy19\_57 Start: 38817, Stop: 39434, Start Num: 17

Candidate Starts for DRBy19\_57:

(Start: 17 @38817 has 135 MA's), (18, 38835), (Start: 20 @38856 has 2 MA's), (24, 38877), (26, 38880), (29, 38889), (30, 38892), (32, 38904), (35, 38928), (36, 38940), (75, 38958), (81, 38997), (82, 39003), (95, 39084), (96, 39090), (98, 39099), (110, 39234), (111, 39240), (115, 39285), (118, 39303), (121, 39318), (123, 39324),

Gene: DaddyRickover\_53 Start: 37900, Stop: 38478, Start Num: 17

Candidate Starts for DaddyRickover\_53:

(Start: 17 @37900 has 135 MA's), (18, 37918), (24, 37960), (30, 37975), (34, 37996), (35, 38011), (36, 38023), (38, 38041), (41, 38062), (45, 38068), (91, 38140), (99, 38167), (104, 38221), (110, 38290), (111, 38296), (115, 38341), (121, 38371), (127, 38401), (132, 38419),

Gene: Daenerys\_48 Start: 35908, Stop: 36597, Start Num: 16

Candidate Starts for Daenerys\_48:

(9, 35878), (Start: 16 @35908 has 27 MA's), (18, 35926), (Start: 20 @35947 has 2 MA's), (24, 35968), (26, 35971), (29, 35980), (30, 35983), (32, 35995), (35, 36019), (36, 36031), (60, 36151), (91, 36223), (99, 36250), (110, 36409), (111, 36415), (115, 36460), (121, 36490), (132, 36538),

Gene: Dante\_54 Start: 37263, Stop: 38090, Start Num: 17

Candidate Starts for Dante\_54:

(Start: 17 @37263 has 135 MA's), (18, 37281), (Start: 20 @37302 has 2 MA's), (26, 37326), (29, 37335), (30, 37338), (35, 37374), (36, 37386), (41, 37425), (57, 37506), (65, 37533), (91, 37725), (99, 37752), (110, 37911), (111, 37917), (123, 38001), (138, 38043),

Gene: DeadP\_59 Start: 39156, Stop: 39872, Start Num: 17

Candidate Starts for DeadP\_59:

(Start: 17 @39156 has 135 MA's), (18, 39174), (23, 39210), (24, 39216), (28, 39231), (29, 39237), (30, 39252), (32, 39264), (34, 39273), (35, 39288), (37, 39312), (77, 39450), (80, 39462), (91, 39510), (99, 39537), (110, 39684), (111, 39690), (115, 39735), (118, 39753), (124, 39774), (130, 39804), (135, 39816),

Gene: Deb65\_49 Start: 35877, Stop: 36566, Start Num: 16

Candidate Starts for Deb65\_49:

(9, 35847), (Start: 16 @35877 has 27 MA's), (18, 35895), (Start: 20 @35916 has 2 MA's), (24, 35937), (26, 35940), (29, 35949), (30, 35952), (32, 35964), (35, 35988), (36, 36000), (60, 36120), (91, 36192), (99, 36219), (110, 36378), (111, 36384), (115, 36429), (121, 36459), (132, 36507),

Gene: Demsculpinboyz\_63 Start: 37137, Stop: 37874, Start Num: 17

Candidate Starts for Demsculpinboyz\_63:

(Start: 17 @37137 has 135 MA's), (18, 37155), (Start: 20 @37176 has 2 MA's), (24, 37197), (26, 37200), (29, 37209), (30, 37212), (35, 37248), (36, 37260), (57, 37380), (62, 37395), (65, 37407), (71, 37431), (73, 37455), (85, 37476), (91, 37527), (99, 37554), (104, 37605), (110, 37674), (111, 37680), (115, 37725), (118, 37743), (121, 37758), (123, 37764),

Gene: DillTech15\_50 Start: 36028, Stop: 36630, Start Num: 16

Candidate Starts for DillTech15\_50:

(9, 35998), (Start: 16 @36028 has 27 MA's), (18, 36046), (Start: 20 @36067 has 2 MA's), (23, 36082), (29, 36100), (30, 36103), (35, 36139), (36, 36151), (38, 36169), (41, 36190), (91, 36268), (99, 36295), (110, 36442), (111, 36448), (115, 36493), (116, 36508), (121, 36523), (132, 36571),

Gene: DirtMcgirt\_53 Start: 36388, Stop: 36972, Start Num: 17

Candidate Starts for DirtMcgirt\_53:

(Start: 17 @36388 has 135 MA's), (18, 36406), (Start: 20 @36427 has 2 MA's), (24, 36448), (26, 36451), (29, 36460), (30, 36463), (35, 36499), (36, 36511), (91, 36634), (99, 36661), (104, 36715), (110, 36784), (111, 36790), (115, 36835), (121, 36865), (132, 36913),

Gene: Doomphist\_53 Start: 38418, Stop: 39137, Start Num: 17

Candidate Starts for Doomphist\_53:

(Start: 17 @38418 has 135 MA's), (18, 38436), (Start: 20 @38457 has 2 MA's), (24, 38478), (26, 38481), (29, 38490), (30, 38493), (35, 38529), (36, 38541), (38, 38559), (41, 38580), (45, 38586), (56, 38655), (66, 38694), (70, 38706), (79, 38754), (91, 38829), (99, 38856), (110, 38949), (111, 38955), (115, 39000), (121, 39030), (132, 39078),

Gene: DosHalletts\_56 Start: 38883, Stop: 39794, Start Num: 19

Candidate Starts for DosHalletts\_56:

(Start: 19 @38883 has 2 MA's), (21, 38901), (27, 38925), (30, 38934), (36, 38982), (40, 39021), (45, 39030), (47, 39063), (52, 39096), (53, 39099), (63, 39144), (67, 39156), (89, 39333), (102, 39462), (108, 39549), (110, 39606), (115, 39657), (121, 39687), (131, 39735),

Gene: DotProduct\_49 Start: 36494, Stop: 37054, Start Num: 22

Candidate Starts for DotProduct\_49:

(Start: 22 @36494 has 2 MA's), (25, 36509), (26, 36512), (29, 36521), (30, 36524), (32, 36536), (35, 36560), (36, 36572), (75, 36590), (81, 36629), (82, 36635), (95, 36716), (96, 36722), (98, 36731), (110, 36866), (111, 36872), (115, 36917), (121, 36947), (132, 36995),

Gene: Drago\_52 Start: 36391, Stop: 36975, Start Num: 17

Candidate Starts for Drago\_52:

(Start: 17 @36391 has 135 MA's), (18, 36409), (Start: 20 @36430 has 2 MA's), (24, 36451), (26, 36454), (29, 36463), (30, 36466), (35, 36502), (36, 36514), (91, 36637), (99, 36664), (104, 36718), (110, 36787), (111, 36793), (115, 36838), (121, 36868), (132, 36916),

Gene: Eish\_58 Start: 38625, Stop: 39248, Start Num: 17

Candidate Starts for Eish\_58:

(Start: 17 @38625 has 135 MA's), (18, 38643), (Start: 20 @38664 has 2 MA's), (24, 38685), (26, 38688), (29, 38697), (30, 38700), (32, 38712), (34, 38721), (35, 38736), (36, 38748), (41, 38787), (45, 38793), (46, 38805), (91, 38871), (99, 38898), (110, 39057), (111, 39063), (123, 39147),

Gene: EleanorGeorge\_52 Start: 36852, Stop: 37499, Start Num: 17

Candidate Starts for EleanorGeorge\_52:

(Start: 17 @36852 has 135 MA's), (Start: 20 @36891 has 2 MA's), (26, 36915), (29, 36924), (30, 36927), (35, 36963), (36, 36975), (41, 37014), (91, 37092), (99, 37119), (110, 37278), (111, 37284),

(118, 37347),

Gene: Emma\_53 Start: 36635, Stop: 37219, Start Num: 17

Candidate Starts for Emma\_53:

(Start: 17 @36635 has 135 MA's), (18, 36653), (Start: 20 @36674 has 2 MA's), (24, 36695), (26, 36698), (29, 36707), (30, 36710), (35, 36746), (36, 36758), (38, 36776), (91, 36881), (99, 36908), (104, 36962), (110, 37031), (111, 37037), (115, 37082), (118, 37100), (124, 37121), (130, 37151), (135, 37163),

Gene: Empress\_52 Start: 37322, Stop: 38011, Start Num: 16

Candidate Starts for Empress\_52:

(9, 37292), (Start: 16 @37322 has 27 MA's), (18, 37340), (Start: 20 @37361 has 2 MA's), (24, 37382), (26, 37385), (29, 37394), (30, 37397), (32, 37409), (35, 37433), (36, 37445), (60, 37565), (91, 37637), (99, 37664), (110, 37823), (111, 37829), (115, 37874), (121, 37904), (132, 37952),

Gene: Enby\_54 Start: 35779, Stop: 36441, Start Num: 17

Candidate Starts for Enby\_54:

(Start: 17 @35779 has 135 MA's), (18, 35797), (Start: 20 @35818 has 2 MA's), (24, 35839), (26, 35842), (29, 35851), (30, 35854), (35, 35890), (36, 35902), (38, 35920), (41, 35941), (45, 35947), (75, 35977), (81, 36016), (82, 36022), (95, 36103), (96, 36109), (98, 36118), (110, 36253), (111, 36259), (115, 36304), (121, 36334), (127, 36364), (132, 36382),

Gene: Estave1\_56 Start: 37990, Stop: 38661, Start Num: 15

Candidate Starts for Estave1\_56:

(Start: 15 @37990 has 4 MA's), (18, 38008), (Start: 20 @38029 has 2 MA's), (24, 38050), (26, 38053), (29, 38062), (30, 38065), (34, 38086), (35, 38101), (37, 38125), (77, 38263), (80, 38275), (91, 38323), (99, 38350), (104, 38404), (110, 38473), (111, 38479), (115, 38524), (118, 38542), (124, 38563), (130, 38593), (135, 38605),

Gene: Fancypants\_56 Start: 38391, Stop: 38969, Start Num: 14

Candidate Starts for Fancypants\_56:

(Start: 14 @38391 has 5 MA's), (18, 38409), (Start: 20 @38430 has 2 MA's), (24, 38451), (26, 38454), (29, 38463), (30, 38466), (32, 38478), (35, 38502), (36, 38514), (38, 38532), (41, 38553), (45, 38559), (99, 38658), (110, 38778), (111, 38784), (123, 38868),

Gene: Fastidio\_53 Start: 36175, Stop: 36777, Start Num: 16

Candidate Starts for Fastidio\_53:

(9, 36145), (Start: 16 @36175 has 27 MA's), (18, 36193), (Start: 20 @36214 has 2 MA's), (23, 36229), (29, 36247), (30, 36250), (35, 36286), (36, 36298), (38, 36316), (41, 36337), (91, 36415), (99, 36442), (110, 36589), (111, 36595), (115, 36640), (116, 36655), (121, 36670), (132, 36718),

Gene: Firehouse51\_54 Start: 40200, Stop: 40946, Start Num: 17

Candidate Starts for Firehouse51\_54:

(Start: 17 @40200 has 135 MA's), (18, 40218), (Start: 20 @40239 has 2 MA's), (26, 40263), (31, 40284), (35, 40311), (36, 40323), (41, 40362), (45, 40368), (56, 40437), (66, 40476), (70, 40488), (79, 40536), (91, 40611), (99, 40638), (104, 40689), (110, 40758), (111, 40764), (115, 40809), (121, 40839), (127, 40869), (132, 40887),

Gene: Florinda\_65 Start: 39887, Stop: 40492, Start Num: 16

Candidate Starts for Florinda\_65:

(9, 39857), (Start: 16 @39887 has 27 MA's), (18, 39905), (Start: 20 @39926 has 2 MA's), (24, 39947), (26, 39950), (29, 39959), (30, 39962), (32, 39974), (34, 39983), (35, 39998), (36, 40010), (41, 40049), (45, 40055), (99, 40154), (110, 40301), (111, 40307), (115, 40352), (132, 40433),

Gene: FreddyB\_55 Start: 36538, Stop: 37185, Start Num: 17

Candidate Starts for FreddyB\_55:

(9, 36508), (Start: 17 @36538 has 135 MA's), (18, 36556), (Start: 20 @36577 has 2 MA's), (26, 36601), (29, 36610), (30, 36613), (35, 36649), (36, 36661), (41, 36700), (91, 36778), (99, 36805), (110, 36964), (111, 36970), (118, 37033),

Gene: Fruitloop\_51 Start: 37994, Stop: 38665, Start Num: 17

Candidate Starts for Fruitloop\_51:

(Start: 17 @37994 has 135 MA's), (18, 38012), (Start: 20 @38033 has 2 MA's), (24, 38054), (26, 38057), (29, 38066), (30, 38069), (35, 38105), (36, 38117), (46, 38174), (84, 38282), (91, 38336), (99, 38363), (110, 38486), (111, 38492), (123, 38576), (138, 38618),

Gene: Galactic\_53 Start: 37613, Stop: 38224, Start Num: 17

Candidate Starts for Galactic\_53:

(9, 37583), (Start: 17 @37613 has 135 MA's), (18, 37631), (Start: 20 @37652 has 2 MA's), (24, 37673), (26, 37676), (29, 37685), (30, 37688), (35, 37724), (36, 37736), (41, 37775), (45, 37781), (91, 37853), (99, 37880), (110, 38003), (111, 38009), (118, 38072),

Gene: Gandolph\_56 Start: 37657, Stop: 38280, Start Num: 17

Candidate Starts for Gandolph\_56:

(Start: 17 @37657 has 135 MA's), (18, 37675), (Start: 20 @37696 has 2 MA's), (24, 37717), (26, 37720), (29, 37729), (30, 37732), (32, 37744), (34, 37753), (35, 37768), (36, 37780), (41, 37819), (45, 37825), (46, 37837), (91, 37903), (99, 37930), (110, 38089), (111, 38095), (123, 38179), (138, 38233),

Gene: Geralt\_49 Start: 35876, Stop: 36565, Start Num: 16

Candidate Starts for Geralt\_49:

(9, 35846), (Start: 16 @35876 has 27 MA's), (18, 35894), (Start: 20 @35915 has 2 MA's), (24, 35936), (26, 35939), (29, 35948), (30, 35951), (32, 35963), (35, 35987), (36, 35999), (60, 36119), (91, 36191), (99, 36218), (110, 36377), (111, 36383), (115, 36428), (121, 36458), (132, 36506),

Gene: GigiOuiOui\_50 Start: 36639, Stop: 37199, Start Num: 22

Candidate Starts for GigiOuiOui\_50:

(Start: 22 @36639 has 2 MA's), (25, 36654), (26, 36657), (29, 36666), (30, 36669), (32, 36681), (35, 36705), (36, 36717), (75, 36735), (81, 36774), (82, 36780), (95, 36861), (96, 36867), (98, 36876), (110, 37011), (111, 37017), (115, 37062), (121, 37092), (132, 37140),

Gene: Girafales\_63 Start: 39600, Stop: 40283, Start Num: 17

Candidate Starts for Girafales\_63:

(4, 39549), (8, 39558), (13, 39588), (Start: 15 @39597 has 4 MA's), (Start: 17 @39600 has 135 MA's), (18, 39618), (Start: 20 @39639 has 2 MA's), (24, 39660), (26, 39663), (29, 39672), (30, 39675), (32, 39687), (35, 39711), (36, 39723), (84, 39888), (91, 39942), (99, 39969), (110, 40092), (111, 40098), (115, 40143), (132, 40224),

Gene: Girr\_52 Start: 37416, Stop: 38063, Start Num: 17

Candidate Starts for Girr\_52:

(9, 37386), (Start: 17 @37416 has 135 MA's), (18, 37434), (Start: 20 @37455 has 2 MA's), (24, 37476), (26, 37479), (29, 37488), (30, 37491), (32, 37503), (34, 37512), (35, 37527), (38, 37557), (41, 37578), (45, 37584), (91, 37656), (99, 37683), (110, 37842), (111, 37848), (118, 37911),

Gene: Gorge\_58 Start: 38905, Stop: 39702, Start Num: 17

Candidate Starts for Gorge\_58:



(Start: 17 @38905 has 135 MA's), (18, 38923), (Start: 20 @38944 has 2 MA's), (24, 38965), (26, 38968), (29, 38977), (30, 38980), (35, 39016), (36, 39028), (38, 39046), (57, 39148), (61, 39157), (62, 39163), (71, 39199), (73, 39223), (91, 39295), (99, 39322), (110, 39481), (111, 39487), (118, 39550),

Gene: Hades\_54 Start: 37504, Stop: 38343, Start Num: 17

Candidate Starts for Hades\_54:

(Start: 17 @37504 has 135 MA's), (18, 37522), (Start: 20 @37543 has 2 MA's), (24, 37564), (26, 37567), (29, 37576), (30, 37579), (32, 37591), (35, 37615), (36, 37627), (38, 37645), (41, 37666), (57, 37747), (65, 37774), (91, 37966), (99, 37993), (110, 38152), (111, 38158), (123, 38242),

Gene: Hamulus\_54 Start: 38023, Stop: 38607, Start Num: 17

Candidate Starts for Hamulus\_54:

(Start: 17 @38023 has 135 MA's), (18, 38041), (Start: 20 @38062 has 2 MA's), (24, 38083), (26, 38086), (29, 38095), (30, 38098), (35, 38134), (36, 38146), (91, 38269), (99, 38296), (104, 38350), (110, 38419), (111, 38425), (115, 38470), (118, 38488), (124, 38509), (135, 38551),

Gene: Harley\_55 Start: 37379, Stop: 38041, Start Num: 17

Candidate Starts for Harley\_55:

(Start: 17 @37379 has 135 MA's), (18, 37397), (Start: 20 @37418 has 2 MA's), (24, 37439), (26, 37442), (29, 37451), (30, 37454), (35, 37490), (36, 37502), (38, 37520), (75, 37577), (81, 37616), (82, 37622), (95, 37703), (96, 37709), (98, 37718), (110, 37853), (111, 37859), (115, 37904), (121, 37934), (132, 37982),

Gene: Hegedechwinu\_53 Start: 35958, Stop: 36644, Start Num: 17

Candidate Starts for Hegedechwinu\_53:

(3, 35907), (6, 35916), (12, 35946), (Start: 15 @35955 has 4 MA's), (Start: 17 @35958 has 135 MA's), (18, 35976), (Start: 20 @35988 has 2 MA's), (24, 36009), (26, 36012), (29, 36021), (30, 36024), (31, 36033), (35, 36060), (36, 36072), (38, 36090), (49, 36156), (54, 36165), (56, 36171), (70, 36207), (72, 36231), (91, 36303), (99, 36330), (104, 36384), (110, 36456), (115, 36507), (118, 36525), (124, 36546), (130, 36576), (135, 36588),

Gene: lbOuu\_55 Start: 38158, Stop: 38736, Start Num: 17

Candidate Starts for lbOuu\_55:

(9, 38128), (Start: 17 @38158 has 135 MA's), (18, 38176), (Start: 20 @38197 has 2 MA's), (23, 38212), (29, 38230), (30, 38233), (35, 38269), (38, 38299), (41, 38320), (45, 38326), (91, 38398), (99, 38425), (110, 38548), (111, 38554), (115, 38599), (121, 38629), (132, 38677),

Gene: lbhubesi\_53 Start: 36972, Stop: 37550, Start Num: 17

Candidate Starts for lbhubesi\_53:

(Start: 17 @36972 has 135 MA's), (18, 36990), (Start: 20 @37011 has 2 MA's), (24, 37032), (26, 37035), (29, 37044), (30, 37047), (35, 37083), (36, 37095), (41, 37134), (45, 37140), (91, 37212), (99, 37239), (104, 37293), (110, 37362), (111, 37368), (115, 37413), (121, 37443), (132, 37491),

Gene: Inventum\_48 Start: 36392, Stop: 37033, Start Num: 17

Candidate Starts for Inventum\_48:

(Start: 17 @36392 has 135 MA's), (18, 36410), (24, 36452), (26, 36455), (29, 36464), (30, 36467), (32, 36479), (35, 36503), (36, 36515), (46, 36572), (84, 36680), (91, 36734), (99, 36761), (110, 36854), (111, 36860), (123, 36944), (138, 36986),

Gene: Jabbawokkie\_67 Start: 38459, Stop: 39289, Start Num: 17

Candidate Starts for Jabbawokkie\_67:

(Start: 17 @38459 has 135 MA's), (18, 38477), (Start: 20 @38498 has 2 MA's), (24, 38519), (26, 38522), (29, 38531), (30, 38534), (35, 38570), (36, 38582), (41, 38621), (57, 38702), (65, 38729), (91,

38921), (99, 38948), (110, 39107), (111, 39113), (113, 39134), (123, 39197), (138, 39242),

Gene: Jarcob\_54 Start: 37658, Stop: 38305, Start Num: 17

Candidate Starts for Jarcob\_54:

(9, 37628), (Start: 17 @37658 has 135 MA's), (18, 37676), (Start: 20 @37697 has 2 MA's), (26, 37721), (29, 37730), (30, 37733), (35, 37769), (36, 37781), (41, 37820), (91, 37898), (99, 37925), (110, 38084), (111, 38090), (118, 38153),

Gene: Jinglebell\_58 Start: 39416, Stop: 40003, Start Num: 17

Candidate Starts for Jinglebell\_58:

(10, 39386), (Start: 17 @39416 has 135 MA's), (18, 39434), (Start: 20 @39455 has 2 MA's), (30, 39491), (35, 39527), (36, 39539), (38, 39557), (41, 39578), (46, 39596), (91, 39662), (99, 39689), (110, 39812), (111, 39818), (138, 39956),

Gene: Job42\_56 Start: 39633, Stop: 40247, Start Num: 16

Candidate Starts for Job42\_56:

(Start: 16 @39633 has 27 MA's), (18, 39651), (Start: 20 @39672 has 2 MA's), (24, 39693), (26, 39696), (29, 39705), (30, 39708), (32, 39720), (34, 39729), (35, 39744), (38, 39774), (41, 39795), (45, 39801), (91, 39873), (99, 39900), (110, 40059), (111, 40065), (115, 40110), (121, 40140), (132, 40188),

Gene: JoeyJr\_49 Start: 36076, Stop: 36765, Start Num: 16

Candidate Starts for JoeyJr\_49:

(9, 36046), (Start: 16 @36076 has 27 MA's), (18, 36094), (Start: 20 @36115 has 2 MA's), (24, 36136), (26, 36139), (29, 36148), (30, 36151), (32, 36163), (35, 36187), (36, 36199), (60, 36319), (91, 36391), (99, 36418), (110, 36577), (111, 36583), (115, 36628), (121, 36658), (132, 36706),

Gene: Juice456\_54 Start: 38793, Stop: 39401, Start Num: 20

Candidate Starts for Juice456\_54:

(Start: 17 @38754 has 135 MA's), (Start: 20 @38793 has 2 MA's), (26, 38817), (29, 38826), (30, 38829), (35, 38865), (36, 38877), (41, 38916), (91, 38994), (99, 39021), (110, 39180), (111, 39186), (118, 39249),

Gene: Karhdo\_51 Start: 37236, Stop: 37814, Start Num: 17

Candidate Starts for Karhdo\_51:

(9, 37206), (Start: 17 @37236 has 135 MA's), (18, 37254), (Start: 20 @37275 has 2 MA's), (23, 37290), (29, 37308), (30, 37311), (35, 37347), (36, 37359), (38, 37377), (41, 37398), (91, 37476), (99, 37503), (110, 37626), (115, 37677), (121, 37707), (132, 37755),

Gene: Kenuha5\_51 Start: 36362, Stop: 37102, Start Num: 17

Candidate Starts for Kenuha5\_51:

(Start: 17 @36362 has 135 MA's), (18, 36380), (Start: 20 @36401 has 2 MA's), (26, 36425), (31, 36446), (35, 36473), (36, 36485), (38, 36503), (41, 36524), (45, 36530), (56, 36599), (66, 36638), (70, 36650), (79, 36698), (91, 36773), (99, 36800), (110, 36923), (111, 36929), (123, 37013), (138, 37055),

Gene: Kersh\_55 Start: 39189, Stop: 39803, Start Num: 16

Candidate Starts for Kersh\_55:

(9, 39159), (Start: 16 @39189 has 27 MA's), (18, 39207), (Start: 20 @39228 has 2 MA's), (24, 39249), (26, 39252), (29, 39261), (30, 39264), (32, 39276), (34, 39285), (35, 39300), (38, 39330), (41, 39351), (45, 39357), (91, 39429), (99, 39456), (110, 39615), (111, 39621), (115, 39666), (121, 39696), (132, 39744),

Gene: Kimberlium\_55 Start: 39048, Stop: 39626, Start Num: 17

Candidate Starts for Kimberlium\_55:

(9, 39018), (Start: 17 @39048 has 135 MA's), (18, 39066), (Start: 20 @39087 has 2 MA's), (23, 39102), (29, 39120), (30, 39123), (35, 39159), (36, 39171), (38, 39189), (41, 39210), (91, 39288), (99, 39315), (110, 39438), (115, 39489), (116, 39504), (121, 39519), (132, 39567),

Gene: KingMidas\_53 Start: 37738, Stop: 38427, Start Num: 16

Candidate Starts for KingMidas\_53:

(9, 37708), (Start: 16 @37738 has 27 MA's), (18, 37756), (Start: 20 @37777 has 2 MA's), (24, 37798), (26, 37801), (29, 37810), (30, 37813), (32, 37825), (35, 37849), (36, 37861), (60, 37981), (91, 38053), (99, 38080), (110, 38239), (111, 38245), (115, 38290), (121, 38320), (132, 38368),

Gene: Kingsley\_50 Start: 36346, Stop: 36969, Start Num: 17

Candidate Starts for Kingsley\_50:

(Start: 17 @36346 has 135 MA's), (18, 36364), (Start: 20 @36385 has 2 MA's), (24, 36406), (26, 36409), (29, 36418), (30, 36421), (32, 36433), (34, 36442), (35, 36457), (36, 36469), (41, 36508), (45, 36514), (46, 36526), (91, 36592), (99, 36619), (110, 36778), (111, 36784), (123, 36868), (138, 36922),

Gene: Koella\_48 Start: 33588, Stop: 34235, Start Num: 17

Candidate Starts for Koella\_48:

(9, 33558), (Start: 17 @33588 has 135 MA's), (18, 33606), (Start: 20 @33627 has 2 MA's), (26, 33651), (29, 33660), (30, 33663), (35, 33699), (36, 33711), (41, 33750), (91, 33828), (99, 33855), (110, 34014), (111, 34020), (118, 34083),

Gene: Krakatau\_51 Start: 37074, Stop: 37757, Start Num: 17

Candidate Starts for Krakatau\_51:

(Start: 17 @37074 has 135 MA's), (18, 37092), (Start: 20 @37104 has 2 MA's), (24, 37125), (26, 37128), (29, 37137), (30, 37140), (35, 37176), (36, 37188), (38, 37206), (57, 37272), (61, 37281), (62, 37287), (71, 37323), (77, 37347), (91, 37419), (99, 37446), (104, 37500), (110, 37569), (111, 37575), (115, 37620), (121, 37650), (132, 37698),

Gene: KristaRAM\_56 Start: 39407, Stop: 40030, Start Num: 17

Candidate Starts for KristaRAM\_56:

(3, 39356), (6, 39365), (12, 39395), (Start: 14 @39404 has 5 MA's), (Start: 17 @39407 has 135 MA's), (18, 39425), (Start: 20 @39446 has 2 MA's), (24, 39467), (26, 39470), (29, 39479), (30, 39482), (32, 39494), (35, 39518), (36, 39530), (60, 39650), (91, 39722), (99, 39749), (110, 39842), (111, 39848), (115, 39893), (121, 39923), (132, 39971),

Gene: LastJedi\_48 Start: 34908, Stop: 35555, Start Num: 17

Candidate Starts for LastJedi\_48:

(9, 34878), (Start: 17 @34908 has 135 MA's), (18, 34926), (Start: 20 @34947 has 2 MA's), (24, 34968), (26, 34971), (29, 34980), (30, 34983), (35, 35019), (36, 35031), (41, 35070), (91, 35148), (99, 35175), (110, 35334), (111, 35340), (118, 35403),

Gene: Leozinho\_53 Start: 36989, Stop: 37636, Start Num: 17

Candidate Starts for Leozinho\_53:

(9, 36959), (Start: 17 @36989 has 135 MA's), (18, 37007), (Start: 20 @37028 has 2 MA's), (24, 37049), (26, 37052), (29, 37061), (30, 37064), (32, 37076), (34, 37085), (35, 37100), (38, 37130), (41, 37151), (45, 37157), (91, 37229), (99, 37256), (110, 37415), (111, 37421), (118, 37484),

Gene: Leperchaun\_46 Start: 35306, Stop: 35995, Start Num: 16

Candidate Starts for Leperchaun\_46:

(9, 35276), (Start: 16 @35306 has 27 MA's), (18, 35324), (Start: 20 @35345 has 2 MA's), (24, 35366), (26, 35369), (29, 35378), (30, 35381), (32, 35393), (35, 35417), (36, 35429), (60, 35549), (91, 35621),

(99, 35648), (110, 35807), (111, 35813), (115, 35858), (121, 35888), (132, 35936),

Gene: LilMoolah\_52 Start: 37168, Stop: 37752, Start Num: 17

Candidate Starts for LilMoolah\_52:

(Start: 17 @37168 has 135 MA's), (18, 37186), (Start: 20 @37207 has 2 MA's), (24, 37228), (26, 37231), (29, 37240), (30, 37243), (35, 37279), (36, 37291), (91, 37414), (99, 37441), (104, 37495), (110, 37564), (111, 37570), (115, 37615), (121, 37645), (132, 37693),

Gene: Lizziana\_60 Start: 38661, Stop: 39308, Start Num: 17

Candidate Starts for Lizziana\_60:

(9, 38631), (Start: 17 @38661 has 135 MA's), (18, 38679), (Start: 20 @38700 has 2 MA's), (26, 38724), (29, 38733), (30, 38736), (35, 38772), (36, 38784), (41, 38823), (91, 38901), (99, 38928), (110, 39087), (111, 39093), (118, 39156),

Gene: Llama\_58 Start: 39414, Stop: 40001, Start Num: 17

Candidate Starts for Llama\_58:

(10, 39384), (Start: 17 @39414 has 135 MA's), (18, 39432), (Start: 20 @39453 has 2 MA's), (30, 39489), (35, 39525), (36, 39537), (38, 39555), (41, 39576), (46, 39594), (91, 39660), (99, 39687), (110, 39810), (111, 39816), (138, 39954),

Gene: Llij\_50 Start: 36545, Stop: 37129, Start Num: 17

Candidate Starts for Llij\_50:

(Start: 17 @36545 has 135 MA's), (18, 36563), (Start: 20 @36584 has 2 MA's), (24, 36605), (26, 36608), (29, 36617), (30, 36620), (35, 36656), (36, 36668), (91, 36791), (99, 36818), (104, 36872), (110, 36941), (111, 36947), (115, 36992), (121, 37022), (132, 37070),

Gene: Lorde\_54 Start: 35754, Stop: 36416, Start Num: 17

Candidate Starts for Lorde\_54:

(Start: 17 @35754 has 135 MA's), (18, 35772), (Start: 20 @35793 has 2 MA's), (24, 35814), (26, 35817), (29, 35826), (30, 35829), (35, 35865), (36, 35877), (38, 35895), (41, 35916), (45, 35922), (75, 35952), (81, 35991), (82, 35997), (95, 36078), (96, 36084), (98, 36093), (110, 36228), (111, 36234), (115, 36279), (121, 36309), (132, 36357),

Gene: LunaBlu\_56 Start: 38272, Stop: 38883, Start Num: 17

Candidate Starts for LunaBlu\_56:

(9, 38242), (Start: 17 @38272 has 135 MA's), (18, 38290), (Start: 20 @38311 has 2 MA's), (24, 38332), (26, 38335), (29, 38344), (30, 38347), (35, 38383), (36, 38395), (41, 38434), (45, 38440), (91, 38512), (99, 38539), (110, 38662), (111, 38668), (118, 38731),

Gene: LunaStella\_51 Start: 35924, Stop: 36715, Start Num: 17

Candidate Starts for LunaStella\_51:

(4, 35873), (8, 35882), (13, 35912), (Start: 15 @35921 has 4 MA's), (Start: 17 @35924 has 135 MA's), (18, 35942), (Start: 20 @35963 has 2 MA's), (24, 35984), (26, 35987), (29, 35996), (30, 35999), (32, 36011), (35, 36035), (36, 36047), (38, 36065), (41, 36086), (45, 36092), (51, 36137), (64, 36191), (75, 36251), (81, 36290), (82, 36296), (95, 36377), (96, 36383), (98, 36392), (110, 36527), (115, 36578), (118, 36596), (121, 36608), (132, 36656),

Gene: MadMen\_51 Start: 37141, Stop: 37788, Start Num: 17

Candidate Starts for MadMen\_51:

(Start: 17 @37141 has 135 MA's), (18, 37159), (Start: 20 @37180 has 2 MA's), (24, 37201), (26, 37204), (29, 37213), (30, 37216), (35, 37252), (36, 37264), (38, 37282), (41, 37303), (45, 37309), (46, 37321), (91, 37381), (99, 37408), (110, 37567), (111, 37573), (118, 37636),

Gene: Madiba\_51 Start: 35891, Stop: 36466, Start Num: 14

Candidate Starts for Madiba\_51:

(Start: 14 @35891 has 5 MA's), (18, 35909), (Start: 20 @35930 has 2 MA's), (26, 35954), (29, 35963), (30, 35966), (35, 36002), (38, 36032), (41, 36053), (45, 36059), (91, 36131), (99, 36158), (109, 36266), (110, 36287), (111, 36293), (123, 36377), (138, 36419),

Gene: Mahavrat\_51 Start: 36698, Stop: 37408, Start Num: 14

Candidate Starts for Mahavrat\_51:

(Start: 14 @36698 has 5 MA's), (18, 36716), (Start: 20 @36737 has 2 MA's), (30, 36773), (32, 36785), (35, 36809), (36, 36821), (39, 36860), (42, 36878), (43, 36881), (56, 36959), (66, 36998), (70, 37010), (99, 37115), (110, 37208), (111, 37214), (115, 37259), (117, 37277), (140, 37379),

Gene: Mantra\_49 Start: 36324, Stop: 36902, Start Num: 17

Candidate Starts for Mantra\_49:

(9, 36294), (Start: 17 @36324 has 135 MA's), (18, 36342), (Start: 20 @36363 has 2 MA's), (23, 36378), (29, 36396), (30, 36399), (35, 36435), (36, 36447), (38, 36465), (41, 36486), (91, 36564), (99, 36591), (110, 36714), (115, 36765), (116, 36780), (121, 36795), (132, 36843),

Gene: Maravista\_55 Start: 39079, Stop: 39756, Start Num: 16

Candidate Starts for Maravista\_55:

(Start: 16 @39079 has 27 MA's), (18, 39097), (Start: 20 @39118 has 2 MA's), (24, 39139), (26, 39142), (29, 39151), (30, 39154), (35, 39190), (36, 39202), (38, 39220), (60, 39322), (63, 39337), (88, 39373), (90, 39397), (97, 39448), (100, 39475), (110, 39568), (111, 39574), (115, 39619), (121, 39649), (132, 39697),

Gene: Marker\_54 Start: 37382, Stop: 37948, Start Num: 17

Candidate Starts for Marker\_54:

(Start: 17 @37382 has 135 MA's), (18, 37400), (24, 37442), (30, 37457), (35, 37493), (36, 37505), (41, 37544), (45, 37550), (46, 37562), (91, 37628), (99, 37655), (110, 37748), (111, 37754), (115, 37799), (119, 37823), (122, 37835), (125, 37844),

Gene: Martik\_54 Start: 37614, Stop: 38261, Start Num: 17

Candidate Starts for Martik\_54:

(9, 37584), (Start: 17 @37614 has 135 MA's), (18, 37632), (Start: 20 @37653 has 2 MA's), (26, 37677), (29, 37686), (30, 37689), (35, 37725), (36, 37737), (41, 37776), (91, 37854), (99, 37881), (110, 38040), (111, 38046), (118, 38109),

Gene: Melissauren88\_51 Start: 36531, Stop: 37214, Start Num: 17

Candidate Starts for Melissauren88\_51:

(Start: 17 @36531 has 135 MA's), (18, 36549), (Start: 20 @36570 has 2 MA's), (24, 36591), (26, 36594), (29, 36603), (30, 36606), (35, 36642), (36, 36654), (46, 36711), (84, 36819), (91, 36873), (99, 36900), (104, 36954), (110, 37026), (115, 37077), (118, 37095), (124, 37116), (130, 37146), (135, 37158),

Gene: MilanaBonita\_44 Start: 33238, Stop: 33918, Start Num: 17

Candidate Starts for MilanaBonita\_44:

(Start: 17 @33238 has 135 MA's), (18, 33256), (Start: 20 @33277 has 2 MA's), (24, 33298), (26, 33301), (29, 33310), (30, 33313), (35, 33349), (36, 33361), (46, 33418), (84, 33526), (91, 33580), (99, 33607), (104, 33661), (110, 33730), (111, 33736), (115, 33781), (121, 33811), (132, 33859),

Gene: MinionDave\_52 Start: 37068, Stop: 37781, Start Num: 17

Candidate Starts for MinionDave\_52:

(Start: 17 @37068 has 135 MA's), (18, 37086), (Start: 20 @37107 has 2 MA's), (24, 37128), (26, 37131), (29, 37140), (30, 37143), (35, 37179), (36, 37191), (50, 37278), (58, 37314), (65, 37338), (91, 37410), (99, 37437), (107, 37518), (110, 37593), (111, 37599), (113, 37620), (115, 37644), (121, 37674), (132, 37722),

Gene: Minnie\_58 Start: 39392, Stop: 40183, Start Num: 17

Candidate Starts for Minnie\_58:

(Start: 17 @39392 has 135 MA's), (18, 39410), (Start: 20 @39431 has 2 MA's), (24, 39452), (26, 39455), (29, 39464), (30, 39467), (32, 39479), (35, 39503), (36, 39515), (38, 39533), (41, 39554), (45, 39560), (51, 39605), (64, 39659), (75, 39719), (81, 39758), (82, 39764), (95, 39845), (96, 39851), (98, 39860), (110, 39995), (111, 40001), (115, 40046), (121, 40076), (132, 40124),

Gene: MisterCuddles\_52 Start: 37416, Stop: 38063, Start Num: 17

Candidate Starts for MisterCuddles\_52:

(9, 37386), (Start: 17 @37416 has 135 MA's), (18, 37434), (Start: 20 @37455 has 2 MA's), (24, 37476), (26, 37479), (29, 37488), (30, 37491), (32, 37503), (34, 37512), (35, 37527), (38, 37557), (41, 37578), (45, 37584), (91, 37656), (99, 37683), (110, 37842), (111, 37848), (118, 37911),

Gene: Modragons\_57 Start: 39260, Stop: 39847, Start Num: 17

Candidate Starts for Modragons\_57:

(10, 39230), (Start: 17 @39260 has 135 MA's), (18, 39278), (Start: 20 @39299 has 2 MA's), (30, 39335), (35, 39371), (36, 39383), (38, 39401), (41, 39422), (46, 39440), (91, 39506), (99, 39533), (110, 39656), (111, 39662), (138, 39800),

Gene: MooMoo\_51 Start: 36852, Stop: 37634, Start Num: 19

Candidate Starts for MooMoo\_51:

(Start: 19 @36852 has 2 MA's), (21, 36870), (30, 36903), (36, 36951), (40, 36990), (45, 36999), (53, 37038), (76, 37140), (93, 37239), (105, 37332), (106, 37341), (108, 37386), (110, 37443), (111, 37449), (112, 37461), (115, 37494), (136, 37578),

Gene: Moonbeam\_49 Start: 36588, Stop: 37172, Start Num: 17

Candidate Starts for Moonbeam\_49:

(Start: 17 @36588 has 135 MA's), (18, 36606), (Start: 20 @36627 has 2 MA's), (24, 36648), (26, 36651), (29, 36660), (30, 36663), (35, 36699), (36, 36711), (38, 36729), (91, 36834), (99, 36861), (104, 36915), (110, 36984), (111, 36990), (115, 37035), (118, 37053), (124, 37074), (130, 37104), (135, 37116),

Gene: Mova\_54 Start: 36914, Stop: 37537, Start Num: 17

Candidate Starts for Mova\_54:

(Start: 17 @36914 has 135 MA's), (18, 36932), (Start: 20 @36953 has 2 MA's), (24, 36974), (26, 36977), (29, 36986), (30, 36989), (32, 37001), (34, 37010), (35, 37025), (36, 37037), (41, 37076), (45, 37082), (46, 37094), (91, 37160), (99, 37187), (110, 37346), (111, 37352), (123, 37436), (138, 37490),

Gene: Mozy\_63 Start: 40170, Stop: 40844, Start Num: 15

Candidate Starts for Mozy\_63:

(5, 40128), (Start: 15 @40170 has 4 MA's), (18, 40188), (24, 40230), (30, 40245), (44, 40320), (55, 40359), (59, 40371), (73, 40428), (99, 40533), (104, 40584), (110, 40656), (111, 40662), (115, 40707), (121, 40737), (133, 40785),

Gene: Ms6\_48 Start: 32289, Stop: 32969, Start Num: 17

Candidate Starts for Ms6\_48:

(Start: 17 @32289 has 135 MA's), (18, 32307), (Start: 20 @32328 has 2 MA's), (24, 32349), (26, 32352), (29, 32361), (30, 32364), (35, 32400), (36, 32412), (38, 32430), (46, 32469), (84, 32577), (91,

32631), (99, 32658), (104, 32712), (110, 32781), (111, 32787), (115, 32832), (118, 32850), (124, 32871), (130, 32901), (135, 32913),

Gene: MulchExplorer\_59 Start: 39047, Stop: 39625, Start Num: 17

Candidate Starts for MulchExplorer\_59:

(9, 39017), (Start: 17 @39047 has 135 MA's), (18, 39065), (Start: 20 @39086 has 2 MA's), (23, 39101), (29, 39119), (30, 39122), (35, 39158), (36, 39170), (38, 39188), (41, 39209), (91, 39287), (99, 39314), (110, 39437), (115, 39488), (116, 39503), (121, 39518), (132, 39566),

Gene: Mutaforma13\_57 Start: 39642, Stop: 40256, Start Num: 17

Candidate Starts for Mutaforma13\_57:

(3, 39591), (6, 39600), (12, 39630), (Start: 14 @39639 has 5 MA's), (Start: 17 @39642 has 135 MA's), (18, 39660), (29, 39714), (30, 39717), (32, 39729), (35, 39753), (36, 39765), (99, 39909), (110, 40068), (111, 40074), (115, 40119), (121, 40149), (127, 40179), (132, 40197),

Gene: Nimbo\_48 Start: 35879, Stop: 36568, Start Num: 16

Candidate Starts for Nimbo\_48:

(9, 35849), (Start: 16 @35879 has 27 MA's), (18, 35897), (Start: 20 @35918 has 2 MA's), (24, 35939), (26, 35942), (29, 35951), (30, 35954), (32, 35966), (35, 35990), (36, 36002), (60, 36122), (91, 36194), (99, 36221), (110, 36380), (111, 36386), (115, 36431), (121, 36461), (132, 36509),

Gene: Nitzel\_50 Start: 36307, Stop: 37011, Start Num: 17

Candidate Starts for Nitzel\_50:

(Start: 17 @36307 has 135 MA's), (18, 36325), (Start: 20 @36346 has 2 MA's), (26, 36370), (31, 36391), (35, 36418), (36, 36430), (46, 36487), (84, 36595), (91, 36649), (99, 36676), (109, 36784), (110, 36805), (111, 36811), (115, 36856), (118, 36874), (137, 36961), (140, 36982),

Gene: Nivrat\_50 Start: 37041, Stop: 37625, Start Num: 17

Candidate Starts for Nivrat\_50:

(Start: 17 @37041 has 135 MA's), (18, 37059), (Start: 20 @37080 has 2 MA's), (24, 37101), (26, 37104), (29, 37113), (30, 37116), (35, 37152), (36, 37164), (91, 37287), (99, 37314), (104, 37368), (110, 37437), (111, 37443), (115, 37488), (121, 37518), (132, 37566),

Gene: NormanBulbieJr\_54 Start: 37601, Stop: 38248, Start Num: 17

Candidate Starts for NormanBulbieJr\_54:

(9, 37571), (Start: 17 @37601 has 135 MA's), (18, 37619), (Start: 20 @37640 has 2 MA's), (26, 37664), (29, 37673), (30, 37676), (35, 37712), (36, 37724), (41, 37763), (91, 37841), (99, 37868), (110, 38027), (111, 38033), (118, 38096),

Gene: Ochi17\_56 Start: 38867, Stop: 39454, Start Num: 17

Candidate Starts for Ochi17\_56:

(10, 38837), (Start: 17 @38867 has 135 MA's), (18, 38885), (Start: 20 @38906 has 2 MA's), (30, 38942), (35, 38978), (36, 38990), (38, 39008), (41, 39029), (46, 39047), (91, 39113), (99, 39140), (110, 39263), (111, 39269), (138, 39407),

Gene: OfUltron\_58 Start: 39416, Stop: 40003, Start Num: 17

Candidate Starts for OfUltron\_58:

(10, 39386), (Start: 17 @39416 has 135 MA's), (18, 39434), (Start: 20 @39455 has 2 MA's), (30, 39491), (35, 39527), (36, 39539), (38, 39557), (41, 39578), (46, 39596), (91, 39662), (99, 39689), (110, 39812), (111, 39818), (138, 39956),

Gene: Ogopogo\_58 Start: 38167, Stop: 38712, Start Num: 17

Candidate Starts for Ogopogo\_58:

(Start: 17 @38167 has 135 MA's), (18, 38185), (Start: 20 @38206 has 2 MA's), (26, 38230), (31, 38251), (35, 38278), (36, 38290), (41, 38329), (46, 38347), (91, 38413), (99, 38440), (110, 38533), (111, 38539), (123, 38623), (138, 38665),

Gene: Oksu\_57 Start: 39625, Stop: 40206, Start Num: 14

Candidate Starts for Oksu\_57:

(1, 39538), (Start: 14 @39625 has 5 MA's), (18, 39643), (Start: 20 @39664 has 2 MA's), (26, 39688), (31, 39709), (35, 39736), (45, 39793), (99, 39892), (110, 40015), (111, 40021), (138, 40159),

Gene: OldBen\_51 Start: 37594, Stop: 38172, Start Num: 17

Candidate Starts for OldBen\_51:

(9, 37564), (Start: 17 @37594 has 135 MA's), (18, 37612), (24, 37654), (26, 37657), (29, 37666), (30, 37669), (34, 37690), (35, 37705), (36, 37717), (38, 37735), (41, 37756), (45, 37762), (91, 37834), (99, 37861), (104, 37915), (110, 37984), (111, 37990), (115, 38035), (121, 38065), (127, 38095), (132, 38113),

Gene: Ovechkin\_50 Start: 36858, Stop: 37478, Start Num: 15

Candidate Starts for Ovechkin\_50:

(3, 36810), (6, 36819), (12, 36849), (Start: 15 @36858 has 4 MA's), (Start: 17 @36861 has 135 MA's), (18, 36879), (Start: 20 @36900 has 2 MA's), (24, 36921), (26, 36924), (29, 36933), (30, 36936), (35, 36972), (36, 36984), (38, 37002), (56, 37071), (70, 37107), (72, 37131), (91, 37203), (99, 37230), (104, 37281), (110, 37350), (111, 37356), (114, 37392),

Gene: OwlsT2W\_54 Start: 37885, Stop: 38490, Start Num: 17

Candidate Starts for OwlsT2W\_54:

(Start: 17 @37885 has 135 MA's), (18, 37903), (Start: 20 @37924 has 2 MA's), (24, 37945), (26, 37948), (29, 37957), (30, 37960), (32, 37972), (35, 37996), (36, 38008), (75, 38026), (81, 38065), (82, 38071), (95, 38152), (96, 38158), (98, 38167), (110, 38302), (111, 38308), (115, 38353), (121, 38383), (132, 38431),

Gene: PHappiness\_49 Start: 35852, Stop: 36541, Start Num: 16

Candidate Starts for PHappiness\_49:

(9, 35822), (Start: 16 @35852 has 27 MA's), (18, 35870), (Start: 20 @35891 has 2 MA's), (24, 35912), (26, 35915), (29, 35924), (30, 35927), (32, 35939), (35, 35963), (36, 35975), (60, 36095), (91, 36167), (99, 36194), (110, 36353), (111, 36359), (115, 36404), (121, 36434), (132, 36482),

Gene: PMC\_50 Start: 37468, Stop: 38091, Start Num: 17

Candidate Starts for PMC\_50:

(Start: 17 @37468 has 135 MA's), (18, 37486), (Start: 20 @37507 has 2 MA's), (24, 37528), (26, 37531), (29, 37540), (30, 37543), (32, 37555), (34, 37564), (35, 37579), (36, 37591), (41, 37630), (45, 37636), (46, 37648), (91, 37714), (99, 37741), (110, 37900), (111, 37906), (123, 37990), (138, 38044),

Gene: Pacc40\_48 Start: 35926, Stop: 36615, Start Num: 16

Candidate Starts for Pacc40\_48:

(9, 35896), (Start: 16 @35926 has 27 MA's), (18, 35944), (Start: 20 @35965 has 2 MA's), (24, 35986), (26, 35989), (29, 35998), (30, 36001), (32, 36013), (35, 36037), (36, 36049), (60, 36169), (91, 36241), (99, 36268), (110, 36427), (111, 36433), (115, 36478), (121, 36508), (132, 36556),

Gene: Phasih\_52 Start: 37932, Stop: 38681, Start Num: 17

Candidate Starts for Phasih\_52:

(Start: 17 @37932 has 135 MA's), (18, 37950), (Start: 20 @37971 has 2 MA's), (24, 37992), (26, 37995), (29, 38004), (30, 38007), (34, 38028), (35, 38043), (38, 38073), (41, 38094), (45, 38100), (56, 38169), (66, 38208), (70, 38220), (79, 38268), (91, 38343), (99, 38370), (110, 38493), (111, 38499),



(112, 38511), (115, 38544), (118, 38562), (124, 38583),

Gene: Phatniss\_52 Start: 37640, Stop: 38224, Start Num: 17

Candidate Starts for Phatniss\_52:

(Start: 17 @37640 has 135 MA's), (18, 37658), (Start: 20 @37679 has 2 MA's), (24, 37700), (26, 37703), (29, 37712), (30, 37715), (35, 37751), (36, 37763), (91, 37886), (99, 37913), (104, 37967), (110, 38036), (111, 38042), (115, 38087), (121, 38117), (132, 38165),

Gene: Philus\_57 Start: 38793, Stop: 39410, Start Num: 17

Candidate Starts for Philus\_57:

(Start: 17 @38793 has 135 MA's), (18, 38811), (Start: 20 @38832 has 2 MA's), (24, 38853), (26, 38856), (29, 38865), (30, 38868), (32, 38880), (35, 38904), (36, 38916), (75, 38934), (81, 38973), (82, 38979), (95, 39060), (96, 39066), (98, 39075), (110, 39210), (111, 39216), (115, 39261), (118, 39279), (121, 39294), (123, 39300),

Gene: Pippy\_52 Start: 36472, Stop: 37119, Start Num: 17

Candidate Starts for Pippy\_52:

(9, 36442), (Start: 17 @36472 has 135 MA's), (18, 36490), (Start: 20 @36511 has 2 MA's), (24, 36532), (26, 36535), (29, 36544), (30, 36547), (35, 36583), (36, 36595), (41, 36634), (91, 36712), (99, 36739), (110, 36898), (111, 36904), (118, 36967),

Gene: Plumbus\_55 Start: 37701, Stop: 38279, Start Num: 17

Candidate Starts for Plumbus\_55:

(9, 37671), (Start: 17 @37701 has 135 MA's), (18, 37719), (Start: 20 @37740 has 2 MA's), (23, 37755), (29, 37773), (30, 37776), (35, 37812), (36, 37824), (38, 37842), (41, 37863), (91, 37941), (99, 37968), (110, 38091), (115, 38142), (116, 38157), (121, 38172), (132, 38220),

Gene: Poenanya\_53 Start: 38418, Stop: 39137, Start Num: 17

Candidate Starts for Poenanya\_53:

(Start: 17 @38418 has 135 MA's), (18, 38436), (Start: 20 @38457 has 2 MA's), (24, 38478), (26, 38481), (29, 38490), (30, 38493), (35, 38529), (36, 38541), (38, 38559), (41, 38580), (45, 38586), (56, 38655), (66, 38694), (70, 38706), (79, 38754), (91, 38829), (99, 38856), (110, 38949), (111, 38955), (115, 39000), (121, 39030), (132, 39078),

Gene: Polka14\_52 Start: 37024, Stop: 37638, Start Num: 17

Candidate Starts for Polka14\_52:

(Start: 17 @37024 has 135 MA's), (18, 37042), (Start: 20 @37063 has 2 MA's), (24, 37084), (26, 37087), (29, 37096), (30, 37099), (35, 37135), (38, 37165), (41, 37186), (45, 37192), (46, 37204), (91, 37264), (99, 37291), (110, 37450), (111, 37456), (115, 37501), (121, 37531), (132, 37579),

Gene: Pollywog\_54 Start: 38085, Stop: 38915, Start Num: 17

Candidate Starts for Pollywog\_54:

(9, 38055), (Start: 17 @38085 has 135 MA's), (18, 38103), (Start: 20 @38124 has 2 MA's), (24, 38145), (26, 38148), (29, 38157), (30, 38160), (35, 38196), (36, 38208), (57, 38328), (65, 38355), (91, 38547), (99, 38574), (110, 38733), (111, 38739), (115, 38784), (118, 38802), (138, 38868), (139, 38883),

Gene: Priscilla\_54 Start: 37700, Stop: 38347, Start Num: 17

Candidate Starts for Priscilla\_54:

(9, 37670), (Start: 17 @37700 has 135 MA's), (18, 37718), (Start: 20 @37739 has 2 MA's), (26, 37763), (29, 37772), (30, 37775), (35, 37811), (36, 37823), (41, 37862), (91, 37940), (99, 37967), (110, 38126), (111, 38132), (118, 38195),

Gene: QuickMath\_54 Start: 39271, Stop: 39849, Start Num: 17

Candidate Starts for QuickMath\_54:

(9, 39241), (Start: 17 @39271 has 135 MA's), (18, 39289), (Start: 20 @39310 has 2 MA's), (23, 39325), (29, 39343), (30, 39346), (35, 39382), (36, 39394), (38, 39412), (41, 39433), (91, 39511), (99, 39538), (110, 39661), (115, 39712), (116, 39727), (121, 39742), (132, 39790),

Gene: Quico\_62 Start: 39707, Stop: 40312, Start Num: 16

Candidate Starts for Quico\_62:

(9, 39677), (Start: 16 @39707 has 27 MA's), (18, 39725), (Start: 20 @39746 has 2 MA's), (24, 39767), (26, 39770), (29, 39779), (30, 39782), (32, 39794), (34, 39803), (35, 39818), (36, 39830), (41, 39869), (45, 39875), (99, 39974), (110, 40121), (111, 40127), (115, 40172), (132, 40253),

Gene: Radiance\_53 Start: 37766, Stop: 38371, Start Num: 17

Candidate Starts for Radiance\_53:

(11, 37736), (Start: 17 @37766 has 135 MA's), (18, 37784), (Start: 20 @37805 has 2 MA's), (23, 37820), (29, 37838), (30, 37841), (32, 37853), (35, 37877), (36, 37889), (75, 37907), (81, 37946), (82, 37952), (95, 38033), (96, 38039), (98, 38048), (110, 38183), (111, 38189), (115, 38234), (121, 38264), (132, 38312),

Gene: Ramsey\_54 Start: 38423, Stop: 39037, Start Num: 16

Candidate Starts for Ramsey\_54:

(9, 38393), (Start: 16 @38423 has 27 MA's), (18, 38441), (Start: 20 @38462 has 2 MA's), (24, 38483), (26, 38486), (29, 38495), (30, 38498), (32, 38510), (34, 38519), (35, 38534), (38, 38564), (41, 38585), (45, 38591), (91, 38663), (99, 38690), (110, 38849), (111, 38855), (115, 38900), (121, 38930), (132, 38978),

Gene: RitaG\_49 Start: 36197, Stop: 36886, Start Num: 16

Candidate Starts for RitaG\_49:

(9, 36167), (Start: 16 @36197 has 27 MA's), (18, 36215), (Start: 20 @36236 has 2 MA's), (24, 36257), (26, 36260), (29, 36269), (30, 36272), (32, 36284), (35, 36308), (36, 36320), (60, 36440), (91, 36512), (99, 36539), (110, 36698), (111, 36704), (115, 36749), (121, 36779), (132, 36827),

Gene: Rockne\_54 Start: 37468, Stop: 38091, Start Num: 17

Candidate Starts for Rockne\_54:

(Start: 17 @37468 has 135 MA's), (18, 37486), (Start: 20 @37507 has 2 MA's), (24, 37528), (26, 37531), (29, 37540), (30, 37543), (32, 37555), (34, 37564), (35, 37579), (36, 37591), (41, 37630), (45, 37636), (46, 37648), (91, 37714), (99, 37741), (110, 37900), (111, 37906), (123, 37990), (138, 38044),

Gene: Royals2015\_56 Start: 37542, Stop: 38093, Start Num: 14

Candidate Starts for Royals2015\_56:

(Start: 14 @37542 has 5 MA's), (18, 37560), (Start: 20 @37581 has 2 MA's), (26, 37605), (29, 37614), (30, 37617), (35, 37653), (36, 37665), (41, 37704), (45, 37710), (91, 37782), (99, 37809), (110, 37902), (111, 37908), (123, 37992),

Gene: Ruby\_50 Start: 37417, Stop: 38064, Start Num: 17

Candidate Starts for Ruby\_50:

(9, 37387), (Start: 17 @37417 has 135 MA's), (18, 37435), (Start: 20 @37456 has 2 MA's), (24, 37477), (26, 37480), (29, 37489), (30, 37492), (32, 37504), (34, 37513), (35, 37528), (38, 37558), (41, 37579), (45, 37585), (91, 37657), (99, 37684), (110, 37843), (111, 37849), (118, 37912),

Gene: SG4\_50 Start: 36264, Stop: 36926, Start Num: 17

Candidate Starts for SG4\_50:

(Start: 17 @36264 has 135 MA's), (18, 36282), (Start: 20 @36303 has 2 MA's), (24, 36324), (26, 36327), (29, 36336), (30, 36339), (35, 36375), (36, 36387), (38, 36405), (41, 36426), (45, 36432), (75, 36462), (81, 36501), (82, 36507), (95, 36588), (96, 36594), (98, 36603), (110, 36738), (111, 36744), (115, 36789), (121, 36819), (127, 36849), (132, 36867),

Gene: Saal\_56 Start: 38724, Stop: 39521, Start Num: 17

Candidate Starts for Saal\_56:

(Start: 17 @38724 has 135 MA's), (18, 38742), (Start: 20 @38763 has 2 MA's), (24, 38784), (26, 38787), (29, 38796), (30, 38799), (35, 38835), (36, 38847), (38, 38865), (57, 38967), (61, 38976), (62, 38982), (71, 39018), (73, 39042), (91, 39114), (99, 39141), (110, 39300), (111, 39306), (118, 39369),

Gene: Sabbb\_58 Start: 38465, Stop: 39208, Start Num: 16

Candidate Starts for Sabbb\_58:

(9, 38435), (Start: 16 @38465 has 27 MA's), (18, 38483), (Start: 20 @38504 has 2 MA's), (24, 38525), (26, 38528), (29, 38537), (30, 38540), (35, 38576), (36, 38588), (38, 38606), (60, 38708), (63, 38723), (88, 38759), (90, 38783), (97, 38834), (100, 38861), (110, 39020), (111, 39026), (115, 39071), (121, 39101), (127, 39131), (132, 39149),

Gene: Sandalphon\_55 Start: 38373, Stop: 38978, Start Num: 17

Candidate Starts for Sandalphon\_55:

(11, 38343), (Start: 17 @38373 has 135 MA's), (18, 38391), (Start: 20 @38412 has 2 MA's), (24, 38433), (26, 38436), (29, 38445), (30, 38448), (32, 38460), (35, 38484), (36, 38496), (75, 38514), (81, 38553), (82, 38559), (95, 38640), (96, 38646), (98, 38655), (110, 38790), (111, 38796), (115, 38841), (121, 38871), (132, 38919),

Gene: Sarma624\_51 Start: 33538, Stop: 34161, Start Num: 17

Candidate Starts for Sarma624\_51:

(Start: 17 @33538 has 135 MA's), (18, 33556), (Start: 20 @33577 has 2 MA's), (24, 33598), (26, 33601), (29, 33610), (30, 33613), (32, 33625), (34, 33634), (35, 33649), (36, 33661), (41, 33700), (45, 33706), (46, 33718), (91, 33784), (99, 33811), (110, 33970), (111, 33976), (123, 34060), (138, 34114),

Gene: Sassafras\_51 Start: 36391, Stop: 37032, Start Num: 17

Candidate Starts for Sassafras\_51:

(Start: 17 @36391 has 135 MA's), (18, 36409), (24, 36451), (26, 36454), (29, 36463), (30, 36466), (32, 36478), (35, 36502), (36, 36514), (46, 36571), (84, 36679), (91, 36733), (99, 36760), (110, 36853), (111, 36859), (123, 36943), (138, 36985),

Gene: Scottish\_52 Start: 37209, Stop: 37898, Start Num: 16

Candidate Starts for Scottish\_52:

(9, 37179), (Start: 16 @37209 has 27 MA's), (18, 37227), (Start: 20 @37248 has 2 MA's), (24, 37269), (26, 37272), (29, 37281), (30, 37284), (32, 37296), (35, 37320), (36, 37332), (60, 37452), (91, 37524), (99, 37551), (110, 37710), (111, 37716), (115, 37761), (121, 37791), (132, 37839),

Gene: Seabastian\_58 Start: 39417, Stop: 40004, Start Num: 17

Candidate Starts for Seabastian\_58:

(10, 39387), (Start: 17 @39417 has 135 MA's), (18, 39435), (Start: 20 @39456 has 2 MA's), (30, 39492), (35, 39528), (36, 39540), (38, 39558), (41, 39579), (46, 39597), (91, 39663), (99, 39690), (110, 39813), (111, 39819), (138, 39957),

Gene: Seagreen\_53 Start: 36966, Stop: 37559, Start Num: 17

Candidate Starts for Seagreen\_53:

(9, 36936), (Start: 17 @36966 has 135 MA's), (18, 36984), (Start: 20 @37005 has 2 MA's), (24, 37026), (26, 37029), (29, 37038), (30, 37041), (35, 37077), (36, 37089), (41, 37128), (45, 37134), (91,

37206), (99, 37233), (110, 37356), (111, 37362), (115, 37407), (118, 37425), (121, 37440), (123, 37446), (126, 37476), (139, 37527), (140, 37530),

Gene: ShiLan\_53 Start: 37647, Stop: 38294, Start Num: 17

Candidate Starts for ShiLan\_53:

(9, 37617), (Start: 17 @37647 has 135 MA's), (18, 37665), (Start: 20 @37686 has 2 MA's), (26, 37710), (29, 37719), (30, 37722), (35, 37758), (36, 37770), (41, 37809), (91, 37887), (99, 37914), (110, 38073), (111, 38079), (118, 38142),

Gene: ShowerHandel\_57 Start: 37614, Stop: 38261, Start Num: 17

Candidate Starts for ShowerHandel\_57:

(9, 37584), (Start: 17 @37614 has 135 MA's), (18, 37632), (Start: 20 @37653 has 2 MA's), (26, 37677), (29, 37686), (30, 37689), (35, 37725), (36, 37737), (41, 37776), (91, 37854), (99, 37881), (110, 38040), (111, 38046), (118, 38109),

Gene: ShroomBoi\_55 Start: 37834, Stop: 38421, Start Num: 16

Candidate Starts for ShroomBoi\_55:

(9, 37804), (Start: 16 @37834 has 27 MA's), (18, 37852), (Start: 20 @37873 has 2 MA's), (23, 37888), (29, 37906), (30, 37909), (35, 37945), (36, 37957), (38, 37975), (60, 38077), (63, 38092), (88, 38128), (90, 38152), (92, 38164), (110, 38233), (111, 38239), (115, 38284), (121, 38314), (132, 38362),

Gene: SiSi\_51 Start: 36788, Stop: 37366, Start Num: 17

Candidate Starts for SiSi\_51:

(9, 36758), (Start: 17 @36788 has 135 MA's), (18, 36806), (Start: 20 @36827 has 2 MA's), (23, 36842), (29, 36860), (30, 36863), (35, 36899), (36, 36911), (38, 36929), (41, 36950), (91, 37028), (99, 37055), (110, 37178), (115, 37229), (116, 37244), (121, 37259), (132, 37307),

Gene: SimranZ1\_53 Start: 36878, Stop: 37609, Start Num: 14

Candidate Starts for SimranZ1\_53:

(Start: 14 @36878 has 5 MA's), (18, 36896), (Start: 20 @36917 has 2 MA's), (30, 36953), (32, 36965), (35, 36989), (36, 37001), (39, 37040), (42, 37058), (43, 37061), (56, 37139), (66, 37178), (70, 37190), (99, 37295), (104, 37349), (110, 37418), (111, 37424), (117, 37487), (138, 37562),

Gene: Soul22\_57 Start: 37584, Stop: 38414, Start Num: 17

Candidate Starts for Soul22\_57:

(Start: 17 @37584 has 135 MA's), (18, 37602), (Start: 20 @37623 has 2 MA's), (24, 37644), (26, 37647), (29, 37656), (30, 37659), (35, 37695), (36, 37707), (41, 37746), (57, 37827), (65, 37854), (91, 38046), (99, 38073), (110, 38232), (111, 38238), (123, 38322), (138, 38367),

Gene: Spikelee\_60 Start: 39125, Stop: 39748, Start Num: 17

Candidate Starts for Spikelee\_60:

(Start: 17 @39125 has 135 MA's), (18, 39143), (Start: 20 @39164 has 2 MA's), (24, 39185), (26, 39188), (29, 39197), (30, 39200), (32, 39212), (35, 39236), (36, 39248), (60, 39368), (91, 39440), (99, 39467), (110, 39560), (111, 39566), (115, 39611), (121, 39641), (132, 39689),

Gene: Spoonbill\_51 Start: 36151, Stop: 36924, Start Num: 16

Candidate Starts for Spoonbill\_51:

(9, 36121), (Start: 16 @36151 has 27 MA's), (18, 36169), (Start: 20 @36190 has 2 MA's), (23, 36205), (29, 36223), (30, 36226), (32, 36238), (35, 36262), (36, 36274), (60, 36394), (91, 36466), (99, 36493), (110, 36652), (111, 36658), (115, 36703), (121, 36733), (127, 36763), (132, 36781), (141, 36859),

Gene: StAnnes\_52 Start: 37618, Stop: 38367, Start Num: 17

Candidate Starts for StAnnes\_52:

(Start: 17 @37618 has 135 MA's), (18, 37636), (Start: 20 @37657 has 2 MA's), (24, 37678), (26, 37681), (30, 37693), (35, 37729), (36, 37741), (41, 37780), (45, 37786), (56, 37855), (66, 37894), (70, 37906), (79, 37954), (91, 38029), (99, 38056), (104, 38110), (110, 38179), (111, 38185), (115, 38230), (118, 38248), (124, 38269), (130, 38299), (135, 38311),

Gene: Stap\_52 Start: 36952, Stop: 37641, Start Num: 16

Candidate Starts for Stap\_52:

(9, 36922), (Start: 16 @36952 has 27 MA's), (18, 36970), (Start: 20 @36991 has 2 MA's), (23, 37006), (29, 37024), (30, 37027), (32, 37039), (35, 37063), (36, 37075), (60, 37195), (91, 37267), (99, 37294), (110, 37453), (111, 37459), (115, 37504), (121, 37534), (127, 37564), (132, 37582),

Gene: Starcevich\_53 Start: 37660, Stop: 38220, Start Num: 17

Candidate Starts for Starcevich\_53:

(2, 37606), (Start: 17 @37660 has 135 MA's), (18, 37678), (Start: 20 @37699 has 2 MA's), (30, 37735), (32, 37747), (35, 37771), (36, 37783), (45, 37828), (91, 37900), (99, 37927), (110, 38020), (111, 38026), (115, 38071), (118, 38089), (121, 38104), (123, 38110),

Gene: SwagPigglett\_59 Start: 39987, Stop: 40571, Start Num: 17

Candidate Starts for SwagPigglett\_59:

(Start: 17 @39987 has 135 MA's), (18, 40005), (Start: 20 @40026 has 2 MA's), (24, 40047), (26, 40050), (29, 40059), (30, 40062), (35, 40098), (36, 40110), (91, 40233), (99, 40260), (104, 40314), (110, 40383), (111, 40389), (115, 40434), (121, 40464), (132, 40512),

Gene: TChen\_53 Start: 37875, Stop: 38666, Start Num: 17

Candidate Starts for TChen\_53:

(4, 37824), (8, 37833), (13, 37863), (Start: 15 @37872 has 4 MA's), (Start: 17 @37875 has 135 MA's), (18, 37893), (Start: 20 @37914 has 2 MA's), (24, 37935), (26, 37938), (29, 37947), (30, 37950), (32, 37962), (35, 37986), (36, 37998), (38, 38016), (41, 38037), (45, 38043), (51, 38088), (64, 38142), (75, 38202), (81, 38241), (82, 38247), (95, 38328), (96, 38334), (98, 38343), (110, 38478), (115, 38529), (118, 38547), (121, 38559), (132, 38607),

Gene: Taj\_57 Start: 38366, Stop: 39082, Start Num: 17

Candidate Starts for Taj\_57:

(Start: 17 @38366 has 135 MA's), (18, 38384), (23, 38420), (24, 38426), (28, 38441), (29, 38447), (30, 38462), (32, 38474), (34, 38483), (35, 38498), (37, 38522), (77, 38660), (80, 38672), (91, 38720), (99, 38747), (110, 38894), (111, 38900), (115, 38945), (118, 38963), (124, 38984), (130, 39014), (135, 39026),

Gene: ThetaBob\_57 Start: 37869, Stop: 38615, Start Num: 15

Candidate Starts for ThetaBob\_57:

(Start: 15 @37869 has 4 MA's), (18, 37887), (23, 37923), (24, 37929), (30, 37944), (32, 37956), (33, 37959), (34, 37965), (35, 37980), (36, 37992), (37, 38004), (48, 38067), (69, 38121), (73, 38157), (85, 38181), (91, 38232), (99, 38259), (104, 38313), (110, 38382), (111, 38388), (115, 38433), (121, 38469), (129, 38508),

Gene: Tootsieroll\_55 Start: 36978, Stop: 37592, Start Num: 16

Candidate Starts for Tootsieroll\_55:

(9, 36948), (Start: 16 @36978 has 27 MA's), (18, 36996), (Start: 20 @37017 has 2 MA's), (24, 37038), (26, 37041), (29, 37050), (30, 37053), (32, 37065), (34, 37074), (35, 37089), (38, 37119), (41, 37140), (45, 37146), (91, 37218), (99, 37245), (110, 37404), (111, 37410), (115, 37455), (121, 37485), (132, 37533),

Gene: Toron\_57 Start: 39017, Stop: 39823, Start Num: 19

Candidate Starts for Toron\_57:

(Start: 19 @39017 has 2 MA's), (21, 39035), (27, 39059), (30, 39068), (36, 39116), (40, 39155), (41, 39158), (45, 39164), (74, 39272), (78, 39320), (87, 39359), (94, 39413), (101, 39482), (103, 39500), (110, 39617), (111, 39623), (112, 39635), (115, 39668), (118, 39686),

Gene: Tweety\_53 Start: 38001, Stop: 38609, Start Num: 17

Candidate Starts for Tweety\_53:

(Start: 17 @38001 has 135 MA's), (18, 38019), (Start: 20 @38040 has 2 MA's), (24, 38061), (26, 38064), (29, 38073), (30, 38076), (32, 38088), (35, 38112), (36, 38124), (75, 38142), (81, 38181), (82, 38187), (95, 38268), (96, 38274), (98, 38283), (110, 38421), (115, 38472), (118, 38490), (123, 38511), (128, 38541), (134, 38553),

Gene: UncleRicky\_53 Start: 37888, Stop: 38472, Start Num: 17

Candidate Starts for UncleRicky\_53:

(Start: 17 @37888 has 135 MA's), (18, 37906), (Start: 20 @37927 has 2 MA's), (24, 37948), (26, 37951), (29, 37960), (30, 37963), (35, 37999), (36, 38011), (91, 38134), (99, 38161), (104, 38215), (110, 38284), (111, 38290), (115, 38335), (121, 38365), (132, 38413),

Gene: VRedHorse\_53 Start: 36755, Stop: 37381, Start Num: 17

Candidate Starts for VRedHorse\_53:

(Start: 17 @36755 has 135 MA's), (18, 36773), (Start: 20 @36794 has 2 MA's), (24, 36815), (26, 36818), (29, 36827), (30, 36830), (35, 36866), (38, 36896), (41, 36917), (45, 36923), (46, 36935), (91, 36995), (99, 37022), (110, 37181), (111, 37187), (115, 37232), (118, 37250), (121, 37265), (123, 37271),

Gene: Velveteen\_48 Start: 33538, Stop: 34161, Start Num: 17

Candidate Starts for Velveteen\_48:

(Start: 17 @33538 has 135 MA's), (18, 33556), (Start: 20 @33577 has 2 MA's), (24, 33598), (26, 33601), (29, 33610), (30, 33613), (32, 33625), (34, 33634), (35, 33649), (36, 33661), (41, 33700), (45, 33706), (46, 33718), (91, 33784), (99, 33811), (110, 33970), (111, 33976), (123, 34060), (138, 34114),

Gene: Wachhund\_55 Start: 37144, Stop: 37749, Start Num: 17

Candidate Starts for Wachhund\_55:

(Start: 17 @37144 has 135 MA's), (18, 37162), (Start: 20 @37183 has 2 MA's), (24, 37204), (26, 37207), (29, 37216), (30, 37219), (32, 37231), (35, 37255), (36, 37267), (75, 37285), (81, 37324), (82, 37330), (95, 37411), (96, 37417), (98, 37426), (110, 37561), (111, 37567), (115, 37612), (118, 37630), (123, 37651), (128, 37681), (134, 37693),

Gene: Wee\_56 Start: 38638, Stop: 39354, Start Num: 17

Candidate Starts for Wee\_56:

(Start: 17 @38638 has 135 MA's), (18, 38656), (23, 38692), (24, 38698), (28, 38713), (29, 38719), (30, 38734), (32, 38746), (34, 38755), (35, 38770), (37, 38794), (77, 38932), (80, 38944), (91, 38992), (99, 39019), (110, 39166), (111, 39172), (115, 39217), (120, 39247), (131, 39295),

Gene: Whatsapiecost\_54 Start: 36928, Stop: 37551, Start Num: 17

Candidate Starts for Whatsapiecost\_54:

(Start: 17 @36928 has 135 MA's), (18, 36946), (Start: 20 @36967 has 2 MA's), (24, 36988), (26, 36991), (29, 37000), (30, 37003), (32, 37015), (34, 37024), (35, 37039), (36, 37051), (41, 37090), (45, 37096), (46, 37108), (91, 37174), (99, 37201), (110, 37360), (111, 37366), (123, 37450), (138, 37504),

Gene: Whouxphf\_51 Start: 37452, Stop: 38171, Start Num: 17

Candidate Starts for Whouxphf\_51:

(9, 37422), (Start: 17 @37452 has 135 MA's), (18, 37470), (Start: 20 @37491 has 2 MA's), (24, 37512), (26, 37515), (29, 37524), (30, 37527), (32, 37539), (35, 37563), (36, 37575), (46, 37632), (83, 37740), (91, 37794), (99, 37821), (110, 37980), (111, 37986), (123, 38070),

Gene: Yorick\_53 Start: 37988, Stop: 38635, Start Num: 17

Candidate Starts for Yorick\_53:

(9, 37958), (Start: 17 @37988 has 135 MA's), (18, 38006), (Start: 20 @38027 has 2 MA's), (26, 38051), (29, 38060), (30, 38063), (35, 38099), (36, 38111), (41, 38150), (91, 38228), (99, 38255), (110, 38414), (111, 38420), (118, 38483),

Gene: Yoshi\_65 Start: 38992, Stop: 39624, Start Num: 17

Candidate Starts for Yoshi\_65:

(7, 38950), (Start: 17 @38992 has 135 MA's), (18, 39010), (Start: 20 @39031 has 2 MA's), (30, 39067), (35, 39103), (36, 39115), (41, 39154), (45, 39160), (91, 39238), (99, 39265), (110, 39424), (111, 39430), (115, 39475), (118, 39493), (121, 39508), (123, 39514),

Gene: Zapner\_66 Start: 38460, Stop: 39290, Start Num: 17

Candidate Starts for Zapner\_66:

(Start: 17 @38460 has 135 MA's), (18, 38478), (Start: 20 @38499 has 2 MA's), (24, 38520), (26, 38523), (29, 38532), (30, 38535), (35, 38571), (36, 38583), (41, 38622), (57, 38703), (65, 38730), (91, 38922), (99, 38949), (110, 39108), (111, 39114), (113, 39135), (123, 39198), (138, 39243),

Gene: Zizzle\_58 Start: 39306, Stop: 39890, Start Num: 17

Candidate Starts for Zizzle\_58:

(9, 39276), (Start: 17 @39306 has 135 MA's), (18, 39324), (Start: 20 @39345 has 2 MA's), (26, 39369), (29, 39378), (30, 39381), (35, 39417), (36, 39429), (91, 39552), (99, 39579), (104, 39633), (110, 39702), (111, 39708), (115, 39753), (121, 39783), (132, 39831),