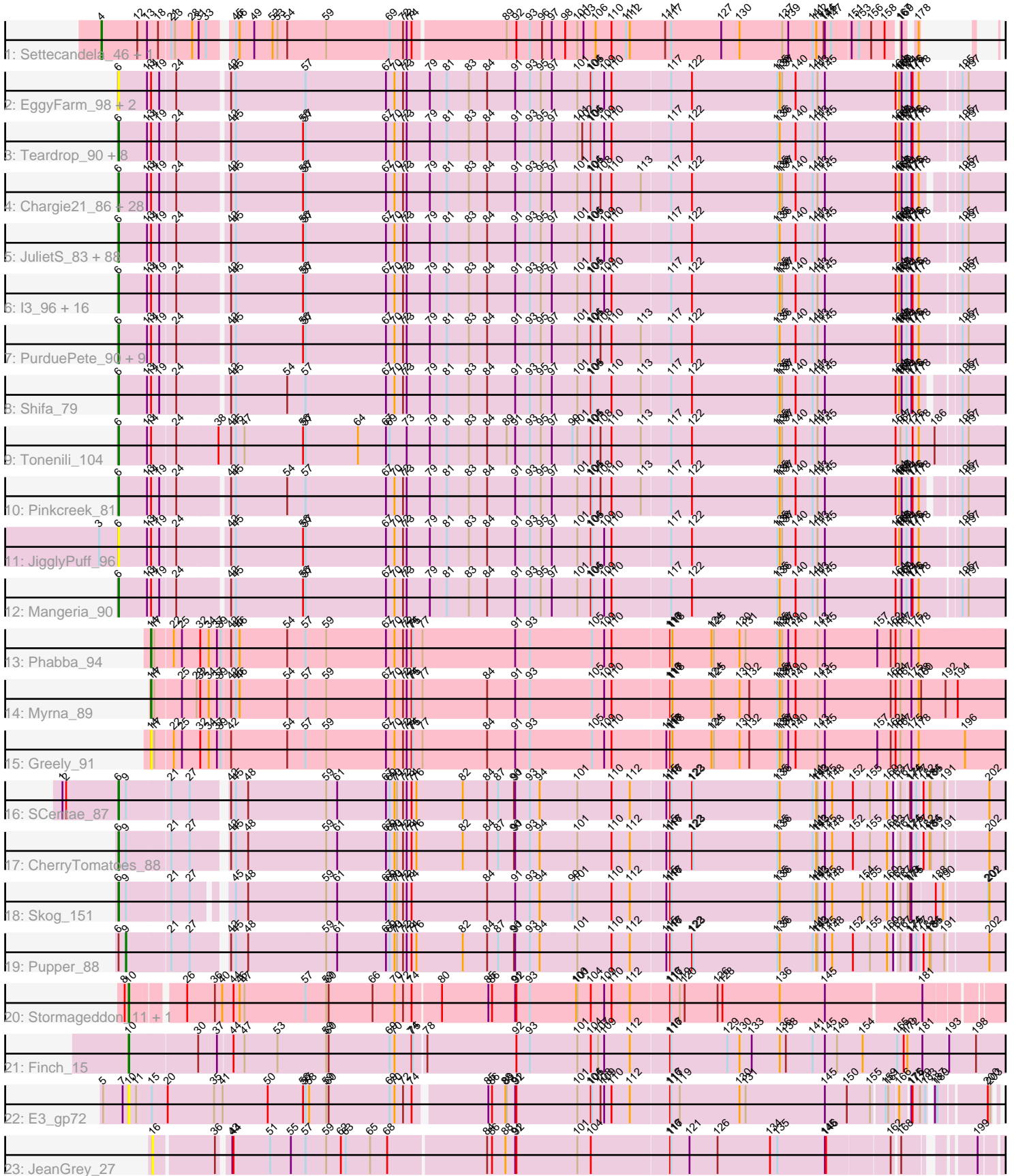


Zoomed Pham 195447



Note: Tracks are now grouped by subcluster and scaled. Switching in subcluster is indicated by changes in track color. Track scale is now set by default to display the region 30 bp upstream of start 1 to 30 bp downstream of the last possible start. If this default region is judged to be packed too tightly with annotated starts, the track will be further scaled to only show that region of the ORF with annotated starts. This action will be indicated by adding "Zoomed" to the title. For starts, yellow indicates the location of called starts comprised solely of Glimmer/GeneMark auto-annotations, green indicates the location of called starts with at least 1 manual gene annotation.

Pham 195447 Report

This analysis was run 12/09/24 on database version 580.

Pham number 195447 has 176 members, 18 are drafts.

Phages represented in each track:

- Track 1 : Settecandela_46, Phrappuccino_46
- Track 2 : EggyFarm_98, Grasshills_97, BigCity_98
- Track 3 : Teardrop_90, Bangla1971_91, ArcherS7_89, Specks_96, Littleton_90, Drazdys_90, Astraea_88, LolaVinca_92, SmallFry_90
- Track 4 : Chargie21_86, Flabslab_85, ChaylaJr_85, ErnieJ_86, Fludd_90, Basquiat_86, BackyardAgain_87, StubbySaigey_92, Melpomini_84, ScottMcG_87, Phox_87, ChickenPhender_86, Morizzled23_90, Catera_88, HyRo_82, Kboogie_93, Spud_90, Janiyr_92, Alice_83, Quasimodo_90, Rabinovish_87, Turret_85, JustHall_86, Blackbrain_85, Trinitium_86, Cactojaque_85, Dietrick_82, Stubby_83, EasyJones_93
- Track 5 : JulietS_83, Bxz1_89, Shrimp_90, Ngannou_86, Iota_84, Yucca_90, Salacia_94, Pivoine_89, Guwapp_89, Lee7_88, Ronan_83, MikeLiesIn_91, Amataga_90, Caravan_85, Pleione_93, Naija_89, Ghost_89, Ewok_91, ParkTD_91, DTDevon_91, Grungle_77, Loanshark_90, Concombre_97, TinyTim_90, EmToTheThree_93, ValleyTerrace_90, Blackdragon_84, Kamryn_90, LRRHood_84, SilverDipper_91, Audrick_92, Babyland_90, Sauce_90, Cali_85, Willis_91, NedWong_91, Naval22_95, Khaleesi_89, InigoMontoya_91, LinStu_90, Erdmann_91, Tainan_95, DrPhinkDaddy_89, Bipolarisk_89, FoxtrotP1_90, Yassified_86, Demodog_97, Momo_89, Norm_91, SrishMeg2525_89, Izajani_90, Lukilu_81, Phusco_90, QBert_84, Jessibeth14_89, Delylah_93, EmmaElysia_89, Bonray_90, Latch_90, Tortoise16_88, Gangam_90, Zalkecks_91, YemiJoy2021_91, Megamind_89, Koguma_86, Issimir_89, Shelob_92, Delilah_90, Patter_90, Zeenon_92, Ava3_91, FudgeTart_90, Sprinklers_85, Daffodil_95, Halldule_83, Breeniome_90, Burrough_90, ZygoTaiga_89, Roots515_89, Atlantean_89, Dandelion_97, CharlieB_85, Phlegm_92, YoungMoneyMata_90, Shaqnato_82, Sebata_91, MoMoMixon_91, Gabriel_92, McGee_91
- Track 6 : I3_96, FrayBell_96, DirtMonster_83, BananaFence_89, IkeLoa_84, Bigswole_95, Nappy_92, BadAgartude_87, Domi_84, StephanieG_89, InterFolia_99, NoodleTree_98, Darko_90, LordLeafolot_95, Mikro_88, NuevoMundo_96, RoMag_85
- Track 7 : PurduePete_90, Napoleon13_86, Bread_90, Asterius_87, Capablanca_92, McWolfish_88, Maby2021_90, Wally_89, Nidhogg_91, Rizal_88
- Track 8 : Shifa_79
- Track 9 : Tonenili_104
- Track 10 : Pinkcreek_81
- Track 11 : JigglyPuff_96
- Track 12 : Mangeria_90
- Track 13 : Phabba_94

- Track 14 : Myrna_89
- Track 15 : Greely_91
- Track 16 : SCentae_87
- Track 17 : CherryTomatoes_88
- Track 18 : Skog_151
- Track 19 : Pupper_88
- Track 20 : Stormageddon_11, RedWattleHog_11
- Track 21 : Finch_15
- Track 22 : E3_gp72
- Track 23 : JeanGrey_27

Summary of Final Annotations (See graph section above for start numbers):

The start number called the most often in the published annotations is 6, it was called in 150 of the 158 non-draft genes in the pham.

Genes that call this "Most Annotated" start:

- Alice_83, Amataga_90, ArcherS7_89, Asterius_87, Astraea_88, Atlantean_89, Audrick_92, Ava3_91, Babyland_90, BackyardAgain_87, BadAgartude_87, BananaFence_89, Bangla1971_91, Basquiat_86, BigCity_98, Bigswole_95, Bipolarisk_89, Blackbrain_85, Blackdragon_84, Bonray_90, Bread_90, Breeniome_90, Burrough_90, Bxz1_89, Cactojaque_85, Cali_85, Capablanca_92, Caravan_85, Catera_88, Chargie21_86, CharlieB_85, ChaylaJr_85, CherryTomatoes_88, ChickenPhender_86, Concombre_97, DTDevon_91, Daffodil_95, Dandelion_97, Darko_90, Delilah_90, Delylah_93, Demodog_97, Dietrick_82, DirtMonster_83, Domi_84, DrPhinkDaddy_89, Drazdys_90, EasyJones_93, EggyFarm_98, EmToTheThree_93, EmmaElysia_89, Erdmann_91, ErnieJ_86, Ewok_91, Flabslab_85, Fludd_90, FoxtrotP1_90, FrayBell_96, FudgeTart_90, Gabriel_92, Gamgam_90, Ghost_89, Grasshills_97, Grungle_77, Guwapp_89, Haldule_83, HyRo_82, I3_96, IkeLoa_84, InigoMontoya_91, InterFolia_99, Iota_84, Issimir_89, Izajani_90, Janiyra_92, Jessibeth14_89, JigglyPuff_96, JulietS_83, JustHall_86, Kamryn_90, Kboogie_93, Khaleesi_89, Koguma_86, LRRHood_84, Latch_90, Lee7_88, LinStu_90, Littleton_90, Loanshark_90, LolaVinca_92, LordLeafot_95, Lukilu_81, Maby2021_90, Mangeria_90, McGee_91, McWolfish_88, Megamind_89, Melpomini_84, MikeLiesIn_91, Mikro_88, MoMoMixon_91, Momo_89, Morizzled23_90, Naija_89, Napoleon13_86, Nappy_92, Naval22_95, NedWong_91, Ngannou_86, Nidhogg_91, NoodleTree_98, Norm_91, NuevoMundo_96, ParkTD_91, Patter_90, Phlegm_92, Phox_87, Phusco_90, Pinkcreek_81, Pivoine_89, Pleione_93, PurduePete_90, QBert_84, Quasimodo_90, Rabinovish_87, Rizal_88, RoMag_85, Ronan_83, Roots515_89, SCentae_87, Salacia_94, Sauce_90, ScottMcG_87, Sebata_91, Shaqnato_82, Shelob_92, Shifa_79, Shrimp_90, SilverDipper_91, Skog_151, SmallFry_90, Specks_96, Sprinklers_85, Spud_90, SrishMeg2525_89, StephanieG_89, StubbySaigey_92, Stubby_83, Tainan_95, Teardrop_90, TinyTim_90, Tonenili_104, Tortoise16_88, Trinitium_86, Turret_85, ValleyTerrace_90, Wally_89, Willis_91, Yassified_86, YemiJoy2021_91, YoungMoneyMata_90, Yucca_90, Zalkecks_91, Zeenon_92, ZygoTaiga_89,

Genes that have the "Most Annotated" start but do not call it:

- Pupper_88,

Genes that do not have the "Most Annotated" start:

- E3_gp72, Finch_15, Greely_91, JeanGrey_27, Myrna_89, Phabba_94, Phrappuccino_46, RedWattleHog_11, Settecandela_46, Stormageddon_11,

Summary by start number:

Start 4:

- Found in 2 of 176 (1.1%) of genes in pham
- Manual Annotations of this start: 2 of 158
- Called 100.0% of time when present
- Phage (with cluster) where this start called: Phrappuccino_46 (AA), Settecandela_46 (AA),

Start 6:

- Found in 166 of 176 (94.3%) of genes in pham
- Manual Annotations of this start: 150 of 158
- Called 99.4% of time when present
- Phage (with cluster) where this start called: Alice_83 (C1), Amataga_90 (C1), ArcherS7_89 (C1), Asterius_87 (C1), Astraea_88 (C1), Atlantean_89 (C1), Audrick_92 (C1), Ava3_91 (C1), Babyland_90 (C1), BackyardAgain_87 (C1), BadAgartude_87 (C1), BananaFence_89 (C1), Bangla1971_91 (C1), Basquiat_86 (C1), BigCity_98 (C1), Bigswole_95 (C1), Bipolarisk_89 (C1), Blackbrain_85 (C1), Blackdragon_84 (C1), Bonray_90 (C1), Bread_90 (C1), Breeniome_90 (C1), Burrough_90 (C1), Bxz1_89 (C1), Cactojaque_85 (C1), Cali_85 (C1), Capablanca_92 (C1), Caravan_85 (C1), CATERA_88 (C1), Chargie21_86 (C1), CharlieB_85 (C1), ChaylaJr_85 (C1), CherryTomatoes_88 (DO), ChickenPhender_86 (C1), Concombre_97 (C1), DTDevon_91 (C1), Daffodil_95 (C1), Dandelion_97 (C1), Darko_90 (C1), Delilah_90 (C1), Delylah_93 (C1), Demodog_97 (C1), Dietrick_82 (C1), DirtMonster_83 (C1), Domi_84 (C1), DrPhinkDaddy_89 (C1), Drazdys_90 (C1), EasyJones_93 (C1), EggyFarm_98 (C1), EmToTheThree_93 (C1), EmmaElysia_89 (C1), Erdmann_91 (C1), ErnieJ_86 (C1), Ewok_91 (C1), Flabslab_85 (C1), Fludd_90 (C1), FoxtrotP1_90 (C1), FrayBell_96 (C1), FudgeTart_90 (C1), Gabriel_92 (C1), Gamgam_90 (C1), Ghost_89 (C1), Grasshills_97 (C1), Grungle_77 (C1), Guwapp_89 (C1), Halldule_83 (C1), HyRo_82 (C1), I3_96 (C1), IkeLoa_84 (C1), InigoMontoya_91 (C1), InterFolia_99 (C1), Iota_84 (C1), Issimir_89 (C1), Izajani_90 (C1), Janiyra_92 (C1), Jessibeth14_89 (C1), JigglyPuff_96 (C1), JulietS_83 (C1), JustHall_86 (C1), Kamryn_90 (C1), Kboogie_93 (C1), Khaleesi_89 (C1), Koguma_86 (C1), LRRHood_84 (C1), Latch_90 (C1), Lee7_88 (C1), LinStu_90 (C1), Littleton_90 (C1), Loanshark_90 (C1), LolaVinca_92 (C1), LordLeafolot_95 (C1), Lukilu_81 (C1), Maby2021_90 (C1), Mangeria_90 (C1), McGee_91 (C1), McWolfish_88 (C1), Megamind_89 (C1), Melpomini_84 (C1), MikeLiesIn_91 (C1), Mikro_88 (C1), MoMoMixon_91 (C1), Momo_89 (C1), Morizzled23_90 (C1), Naija_89 (C1), Napoleon13_86 (C1), Nappy_92 (C1), Naval22_95 (C1), NedWong_91 (C1), Ngannou_86 (C1), Nidhogg_91 (C1), NoodleTree_98 (C1), Norm_91 (C1), NuevoMundo_96 (C1), ParkTD_91 (C1), Patter_90 (C1), Phlegm_92 (C1), Phox_87 (C1), Phusco_90 (C1), Pinkcreek_81 (C1), Pivoine_89 (C1), Pleione_93 (C1), PurduePete_90 (C1), QBert_84 (C1), Quasimodo_90 (C1), Rabinovich_87 (C1), Rizal_88 (C1), RoMag_85 (C1), Ronan_83 (C1), Roots515_89 (C1), SCentae_87 (DO), Salacia_94 (C1), Sauce_90 (C1), ScottMcG_87 (C1), Sebata_91 (C1), Shaqato_82 (C1), Shelob_92 (C1), Shifa_79 (C1), Shrimp_90 (C1), SilverDipper_91 (C1), Skog_151 (DO), SmallFry_90 (C1), Specks_96 (C1), Sprinklers_85 (C1), Spud_90 (C1), SrishMeg2525_89 (C1), StephanieG_89 (C1), StubbySaigey_92 (C1),

Stubby_83 (C1), Tainan_95 (C1), Teardrop_90 (C1), TinyTim_90 (C1), Tonenili_104 (C1), Tortoise16_88 (C1), Trinitium_86 (C1), Turret_85 (C1), ValleyTerrace_90 (C1), Wally_89 (C1), Willis_91 (C1), Yassified_86 (C1), YemiJoy2021_91 (C1), YoungMoneyMata_90 (C1), Yucca_90 (C1), Zalkecks_91 (C1), Zeenon_92 (C1), ZygoTaiga_89 (C1),

Start 9:

- Found in 4 of 176 (2.3%) of genes in pham
- Manual Annotations of this start: 1 of 158
- Called 25.0% of time when present
- Phage (with cluster) where this start called: Pupper_88 (DO),

Start 10:

- Found in 4 of 176 (2.3%) of genes in pham
- Manual Annotations of this start: 3 of 158
- Called 100.0% of time when present
- Phage (with cluster) where this start called: E3_gp72 (singleton), Finch_15 (singleton), RedWattleHog_11 (DX), Stormageddon_11 (DX),

Start 14:

- Found in 165 of 176 (93.8%) of genes in pham
- Manual Annotations of this start: 2 of 158
- Called 1.8% of time when present
- Phage (with cluster) where this start called: Greely_91 (C2), Myrna_89 (C2), Phabba_94 (C2),

Start 16:

- Found in 1 of 176 (0.6%) of genes in pham
- No Manual Annotations of this start.
- Called 100.0% of time when present
- Phage (with cluster) where this start called: JeanGrey_27 (singleton),

Summary by clusters:

There are 6 clusters represented in this pham: AA, DO, singleton, DX, C2, C1,

Info for manual annotations of cluster AA:

- Start number 4 was manually annotated 2 times for cluster AA.

Info for manual annotations of cluster C1:

- Start number 6 was manually annotated 147 times for cluster C1.

Info for manual annotations of cluster C2:

- Start number 14 was manually annotated 2 times for cluster C2.

Info for manual annotations of cluster DO:

- Start number 6 was manually annotated 3 times for cluster DO.
- Start number 9 was manually annotated 1 time for cluster DO.

Info for manual annotations of cluster DX:

- Start number 10 was manually annotated 2 times for cluster DX.

Gene Information:

Gene: Alice_83 Start: 33887, Stop: 36490, Start Num: 6

Candidate Starts for Alice_83:

(Start: 6 @33887 has 150 MA's), (13, 33956), (Start: 14 @33962 has 2 MA's), (19, 33980), (24, 34016), (42, 34124), (45, 34136), (56, 34301), (57, 34307), (67, 34502), (70, 34523), (72, 34544), (73, 34553), (79, 34610), (81, 34652), (83, 34706), (84, 34751), (91, 34820), (93, 34856), (95, 34883), (97, 34910), (101, 34970), (104, 35003), (105, 35006), (108, 35027), (110, 35054), (113, 35126), (117, 35195), (122, 35246), (135, 35456), (136, 35462), (137, 35468), (140, 35501), (141, 35543), (143, 35555), (145, 35573), (164, 35747), (166, 35756), (167, 35759), (169, 35762), (171, 35774), (175, 35786), (176, 35789), (178, 35804), (195, 35870), (197, 35885), (212, 36029), (213, 36041), (233, 36221), (236, 36239), (245, 36320), (249, 36356), (251, 36377), (255, 36443),

Gene: Amataga_90 Start: 35248, Stop: 37872, Start Num: 6

Candidate Starts for Amataga_90:

(Start: 6 @35248 has 150 MA's), (13, 35317), (Start: 14 @35323 has 2 MA's), (19, 35341), (24, 35377), (42, 35485), (45, 35497), (56, 35662), (57, 35668), (67, 35863), (70, 35884), (72, 35905), (73, 35914), (79, 35971), (81, 36013), (83, 36067), (84, 36112), (91, 36181), (93, 36217), (95, 36244), (97, 36271), (101, 36331), (104, 36364), (105, 36367), (109, 36397), (110, 36415), (117, 36556), (122, 36607), (135, 36817), (136, 36823), (140, 36862), (141, 36904), (143, 36916), (145, 36934), (164, 37108), (166, 37117), (167, 37120), (169, 37123), (171, 37135), (175, 37147), (176, 37150), (178, 37165), (195, 37252), (197, 37267), (212, 37411), (213, 37423), (233, 37603), (236, 37621), (245, 37702), (249, 37738), (251, 37759), (255, 37825),

Gene: ArcherS7_89 Start: 35566, Stop: 38190, Start Num: 6

Candidate Starts for ArcherS7_89:

(Start: 6 @35566 has 150 MA's), (13, 35635), (Start: 14 @35641 has 2 MA's), (19, 35659), (24, 35695), (42, 35803), (45, 35815), (56, 35980), (57, 35986), (67, 36181), (70, 36202), (72, 36223), (73, 36232), (79, 36289), (81, 36331), (83, 36385), (84, 36430), (91, 36499), (93, 36535), (95, 36562), (97, 36589), (101, 36649), (102, 36661), (104, 36682), (105, 36685), (109, 36715), (110, 36733), (117, 36874), (122, 36925), (135, 37135), (136, 37141), (140, 37180), (141, 37222), (143, 37234), (145, 37252), (164, 37426), (166, 37435), (167, 37438), (169, 37441), (171, 37453), (175, 37465), (176, 37468), (178, 37483), (195, 37570), (197, 37585), (212, 37729), (213, 37741), (233, 37921), (236, 37939), (245, 38020), (249, 38056), (251, 38077), (255, 38143),

Gene: Asterius_87 Start: 35551, Stop: 38175, Start Num: 6

Candidate Starts for Asterius_87:

(Start: 6 @35551 has 150 MA's), (13, 35620), (Start: 14 @35626 has 2 MA's), (19, 35644), (24, 35680), (42, 35788), (45, 35800), (56, 35965), (57, 35971), (67, 36166), (70, 36187), (72, 36208), (73, 36217), (79, 36274), (81, 36316), (83, 36370), (84, 36415), (91, 36484), (93, 36520), (95, 36547), (97, 36574), (101, 36634), (104, 36667), (105, 36670), (108, 36691), (110, 36718), (113, 36790), (117, 36859), (122, 36910), (135, 37120), (136, 37126), (140, 37165), (141, 37207), (143, 37219), (145, 37237), (164, 37411), (166, 37420), (167, 37423), (169, 37426), (171, 37438), (175, 37450), (176, 37453), (178, 37468), (195, 37555), (197, 37570), (212, 37714), (213, 37726), (233, 37906), (236, 37924), (245, 38005), (249, 38041), (251, 38062), (255, 38128),

Gene: Astraea_88 Start: 35427, Stop: 38051, Start Num: 6

Candidate Starts for Astraea_88:

(Start: 6 @35427 has 150 MA's), (13, 35496), (Start: 14 @35502 has 2 MA's), (19, 35520), (24, 35556), (42, 35664), (45, 35676), (56, 35841), (57, 35847), (67, 36042), (70, 36063), (72, 36084), (73, 36093), (79, 36150), (81, 36192), (83, 36246), (84, 36291), (91, 36360), (93, 36396), (95, 36423), (97, 36450), (101, 36510), (102, 36522), (104, 36543), (105, 36546), (109, 36576), (110, 36594), (117, 36735), (122, 36786), (135, 36996), (136, 37002), (140, 37041), (141, 37083), (143, 37095), (145,

37113), (164, 37287), (166, 37296), (167, 37299), (169, 37302), (171, 37314), (175, 37326), (176, 37329), (178, 37344), (195, 37431), (197, 37446), (212, 37590), (213, 37602), (233, 37782), (236, 37800), (245, 37881), (249, 37917), (251, 37938), (255, 38004),

Gene: Atlantean_89 Start: 35248, Stop: 37872, Start Num: 6

Candidate Starts for Atlantean_89:

(Start: 6 @35248 has 150 MA's), (13, 35317), (Start: 14 @35323 has 2 MA's), (19, 35341), (24, 35377), (42, 35485), (45, 35497), (56, 35662), (57, 35668), (67, 35863), (70, 35884), (72, 35905), (73, 35914), (79, 35971), (81, 36013), (83, 36067), (84, 36112), (91, 36181), (93, 36217), (95, 36244), (97, 36271), (101, 36331), (104, 36364), (105, 36367), (109, 36397), (110, 36415), (117, 36556), (122, 36607), (135, 36817), (136, 36823), (140, 36862), (141, 36904), (143, 36916), (145, 36934), (164, 37108), (166, 37117), (167, 37120), (169, 37123), (171, 37135), (175, 37147), (176, 37150), (178, 37165), (195, 37252), (197, 37267), (212, 37411), (213, 37423), (233, 37603), (236, 37621), (245, 37702), (249, 37738), (251, 37759), (255, 37825),

Gene: Audrick_92 Start: 35227, Stop: 37851, Start Num: 6

Candidate Starts for Audrick_92:

(Start: 6 @35227 has 150 MA's), (13, 35296), (Start: 14 @35302 has 2 MA's), (19, 35320), (24, 35356), (42, 35464), (45, 35476), (56, 35641), (57, 35647), (67, 35842), (70, 35863), (72, 35884), (73, 35893), (79, 35950), (81, 35992), (83, 36046), (84, 36091), (91, 36160), (93, 36196), (95, 36223), (97, 36250), (101, 36310), (104, 36343), (105, 36346), (109, 36376), (110, 36394), (117, 36535), (122, 36586), (135, 36796), (136, 36802), (140, 36841), (141, 36883), (143, 36895), (145, 36913), (164, 37087), (166, 37096), (167, 37099), (169, 37102), (171, 37114), (175, 37126), (176, 37129), (178, 37144), (195, 37231), (197, 37246), (212, 37390), (213, 37402), (233, 37582), (236, 37600), (245, 37681), (249, 37717), (251, 37738), (255, 37804),

Gene: Ava3_91 Start: 35924, Stop: 38548, Start Num: 6

Candidate Starts for Ava3_91:

(Start: 6 @35924 has 150 MA's), (13, 35993), (Start: 14 @35999 has 2 MA's), (19, 36017), (24, 36053), (42, 36161), (45, 36173), (56, 36338), (57, 36344), (67, 36539), (70, 36560), (72, 36581), (73, 36590), (79, 36647), (81, 36689), (83, 36743), (84, 36788), (91, 36857), (93, 36893), (95, 36920), (97, 36947), (101, 37007), (104, 37040), (105, 37043), (109, 37073), (110, 37091), (117, 37232), (122, 37283), (135, 37493), (136, 37499), (140, 37538), (141, 37580), (143, 37592), (145, 37610), (164, 37784), (166, 37793), (167, 37796), (169, 37799), (171, 37811), (175, 37823), (176, 37826), (178, 37841), (195, 37928), (197, 37943), (212, 38087), (213, 38099), (233, 38279), (236, 38297), (245, 38378), (249, 38414), (251, 38435), (255, 38501),

Gene: Babyland_90 Start: 34687, Stop: 37311, Start Num: 6

Candidate Starts for Babyland_90:

(Start: 6 @34687 has 150 MA's), (13, 34756), (Start: 14 @34762 has 2 MA's), (19, 34780), (24, 34816), (42, 34924), (45, 34936), (56, 35101), (57, 35107), (67, 35302), (70, 35323), (72, 35344), (73, 35353), (79, 35410), (81, 35452), (83, 35506), (84, 35551), (91, 35620), (93, 35656), (95, 35683), (97, 35710), (101, 35770), (104, 35803), (105, 35806), (109, 35836), (110, 35854), (117, 35995), (122, 36046), (135, 36256), (136, 36262), (140, 36301), (141, 36343), (143, 36355), (145, 36373), (164, 36547), (166, 36556), (167, 36559), (169, 36562), (171, 36574), (175, 36586), (176, 36589), (178, 36604), (195, 36691), (197, 36706), (212, 36850), (213, 36862), (233, 37042), (236, 37060), (245, 37141), (249, 37177), (251, 37198), (255, 37264),

Gene: BackyardAgain_87 Start: 34766, Stop: 37369, Start Num: 6

Candidate Starts for BackyardAgain_87:

(Start: 6 @34766 has 150 MA's), (13, 34835), (Start: 14 @34841 has 2 MA's), (19, 34859), (24, 34895), (42, 35003), (45, 35015), (56, 35180), (57, 35186), (67, 35381), (70, 35402), (72, 35423), (73, 35432), (79, 35489), (81, 35531), (83, 35585), (84, 35630), (91, 35699), (93, 35735), (95, 35762), (97,

35789), (101, 35849), (104, 35882), (105, 35885), (108, 35906), (110, 35933), (113, 36005), (117, 36074), (122, 36125), (135, 36335), (136, 36341), (137, 36347), (140, 36380), (141, 36422), (143, 36434), (145, 36452), (164, 36626), (166, 36635), (167, 36638), (169, 36641), (171, 36653), (175, 36665), (176, 36668), (178, 36683), (195, 36749), (197, 36764), (212, 36908), (213, 36920), (233, 37100), (236, 37118), (245, 37199), (249, 37235), (251, 37256), (255, 37322),

Gene: BadAgartude_87 Start: 36307, Stop: 38931, Start Num: 6

Candidate Starts for BadAgartude_87:

(Start: 6 @36307 has 150 MA's), (13, 36376), (Start: 14 @36382 has 2 MA's), (19, 36400), (24, 36436), (42, 36544), (45, 36556), (56, 36721), (57, 36727), (67, 36922), (70, 36943), (72, 36964), (73, 36973), (79, 37030), (81, 37072), (83, 37126), (84, 37171), (91, 37240), (93, 37276), (95, 37303), (97, 37330), (101, 37390), (104, 37423), (105, 37426), (109, 37456), (110, 37474), (117, 37615), (122, 37666), (135, 37876), (136, 37882), (137, 37888), (140, 37921), (141, 37963), (143, 37975), (145, 37993), (164, 38167), (166, 38176), (167, 38179), (169, 38182), (171, 38194), (175, 38206), (176, 38209), (178, 38224), (195, 38311), (197, 38326), (212, 38470), (213, 38482), (233, 38662), (236, 38680), (245, 38761), (249, 38797), (251, 38818), (255, 38884),

Gene: BananaFence_89 Start: 35789, Stop: 38413, Start Num: 6

Candidate Starts for BananaFence_89:

(Start: 6 @35789 has 150 MA's), (13, 35858), (Start: 14 @35864 has 2 MA's), (19, 35882), (24, 35918), (42, 36026), (45, 36038), (56, 36203), (57, 36209), (67, 36404), (70, 36425), (72, 36446), (73, 36455), (79, 36512), (81, 36554), (83, 36608), (84, 36653), (91, 36722), (93, 36758), (95, 36785), (97, 36812), (101, 36872), (104, 36905), (105, 36908), (109, 36938), (110, 36956), (117, 37097), (122, 37148), (135, 37358), (136, 37364), (137, 37370), (140, 37403), (141, 37445), (143, 37457), (145, 37475), (164, 37649), (166, 37658), (167, 37661), (169, 37664), (171, 37676), (175, 37688), (176, 37691), (178, 37706), (195, 37793), (197, 37808), (212, 37952), (213, 37964), (233, 38144), (236, 38162), (245, 38243), (249, 38279), (251, 38300), (255, 38366),

Gene: Bangla1971_91 Start: 35696, Stop: 38320, Start Num: 6

Candidate Starts for Bangla1971_91:

(Start: 6 @35696 has 150 MA's), (13, 35765), (Start: 14 @35771 has 2 MA's), (19, 35789), (24, 35825), (42, 35933), (45, 35945), (56, 36110), (57, 36116), (67, 36311), (70, 36332), (72, 36353), (73, 36362), (79, 36419), (81, 36461), (83, 36515), (84, 36560), (91, 36629), (93, 36665), (95, 36692), (97, 36719), (101, 36779), (102, 36791), (104, 36812), (105, 36815), (109, 36845), (110, 36863), (117, 37004), (122, 37055), (135, 37265), (136, 37271), (140, 37310), (141, 37352), (143, 37364), (145, 37382), (164, 37556), (166, 37565), (167, 37568), (169, 37571), (171, 37583), (175, 37595), (176, 37598), (178, 37613), (195, 37700), (197, 37715), (212, 37859), (213, 37871), (233, 38051), (236, 38069), (245, 38150), (249, 38186), (251, 38207), (255, 38273),

Gene: Basquiat_86 Start: 34263, Stop: 36866, Start Num: 6

Candidate Starts for Basquiat_86:

(Start: 6 @34263 has 150 MA's), (13, 34332), (Start: 14 @34338 has 2 MA's), (19, 34356), (24, 34392), (42, 34500), (45, 34512), (56, 34677), (57, 34683), (67, 34878), (70, 34899), (72, 34920), (73, 34929), (79, 34986), (81, 35028), (83, 35082), (84, 35127), (91, 35196), (93, 35232), (95, 35259), (97, 35286), (101, 35346), (104, 35379), (105, 35382), (108, 35403), (110, 35430), (113, 35502), (117, 35571), (122, 35622), (135, 35832), (136, 35838), (137, 35844), (140, 35877), (141, 35919), (143, 35931), (145, 35949), (164, 36123), (166, 36132), (167, 36135), (169, 36138), (171, 36150), (175, 36162), (176, 36165), (178, 36180), (195, 36246), (197, 36261), (212, 36405), (213, 36417), (233, 36597), (236, 36615), (245, 36696), (249, 36732), (251, 36753), (255, 36819),

Gene: BigCity_98 Start: 38300, Stop: 40924, Start Num: 6

Candidate Starts for BigCity_98:

(Start: 6 @38300 has 150 MA's), (13, 38369), (Start: 14 @38375 has 2 MA's), (19, 38393), (24, 38429), (42, 38537), (45, 38549), (57, 38720), (67, 38915), (70, 38936), (72, 38957), (73, 38966), (79, 39023), (81, 39065), (83, 39119), (84, 39164), (91, 39233), (93, 39269), (95, 39296), (97, 39323), (101, 39383), (104, 39416), (105, 39419), (109, 39449), (110, 39467), (117, 39608), (122, 39659), (135, 39869), (136, 39875), (137, 39881), (140, 39914), (141, 39956), (143, 39968), (145, 39986), (164, 40160), (166, 40169), (167, 40172), (169, 40175), (171, 40187), (175, 40199), (176, 40202), (178, 40217), (195, 40304), (197, 40319), (212, 40463), (213, 40475), (233, 40655), (236, 40673), (245, 40754), (249, 40790), (251, 40811), (255, 40877),

Gene: Bigswole_95 Start: 38669, Stop: 41272, Start Num: 6

Candidate Starts for Bigswole_95:

(Start: 6 @38669 has 150 MA's), (13, 38738), (Start: 14 @38744 has 2 MA's), (19, 38762), (24, 38798), (42, 38906), (45, 38918), (56, 39083), (57, 39089), (67, 39284), (70, 39305), (72, 39326), (73, 39335), (79, 39392), (81, 39434), (83, 39488), (84, 39533), (91, 39602), (93, 39638), (95, 39665), (97, 39692), (101, 39752), (104, 39785), (105, 39788), (109, 39818), (110, 39836), (117, 39977), (122, 40028), (135, 40238), (136, 40244), (137, 40250), (140, 40283), (141, 40325), (143, 40337), (145, 40355), (164, 40529), (166, 40538), (167, 40541), (169, 40544), (171, 40556), (175, 40568), (176, 40571), (178, 40586), (195, 40652), (197, 40667), (212, 40811), (213, 40823), (233, 41003), (236, 41021), (245, 41102), (249, 41138), (251, 41159), (255, 41225),

Gene: Bipolarisk_89 Start: 35954, Stop: 38578, Start Num: 6

Candidate Starts for Bipolarisk_89:

(Start: 6 @35954 has 150 MA's), (13, 36023), (Start: 14 @36029 has 2 MA's), (19, 36047), (24, 36083), (42, 36191), (45, 36203), (56, 36368), (57, 36374), (67, 36569), (70, 36590), (72, 36611), (73, 36620), (79, 36677), (81, 36719), (83, 36773), (84, 36818), (91, 36887), (93, 36923), (95, 36950), (97, 36977), (101, 37037), (104, 37070), (105, 37073), (109, 37103), (110, 37121), (117, 37262), (122, 37313), (135, 37523), (136, 37529), (140, 37568), (141, 37610), (143, 37622), (145, 37640), (164, 37814), (166, 37823), (167, 37826), (169, 37829), (171, 37841), (175, 37853), (176, 37856), (178, 37871), (195, 37958), (197, 37973), (212, 38117), (213, 38129), (233, 38309), (236, 38327), (245, 38408), (249, 38444), (251, 38465), (255, 38531),

Gene: Blackbrain_85 Start: 34080, Stop: 36683, Start Num: 6

Candidate Starts for Blackbrain_85:

(Start: 6 @34080 has 150 MA's), (13, 34149), (Start: 14 @34155 has 2 MA's), (19, 34173), (24, 34209), (42, 34317), (45, 34329), (56, 34494), (57, 34500), (67, 34695), (70, 34716), (72, 34737), (73, 34746), (79, 34803), (81, 34845), (83, 34899), (84, 34944), (91, 35013), (93, 35049), (95, 35076), (97, 35103), (101, 35163), (104, 35196), (105, 35199), (108, 35220), (110, 35247), (113, 35319), (117, 35388), (122, 35439), (135, 35649), (136, 35655), (137, 35661), (140, 35694), (141, 35736), (143, 35748), (145, 35766), (164, 35940), (166, 35949), (167, 35952), (169, 35955), (171, 35967), (175, 35979), (176, 35982), (178, 35997), (195, 36063), (197, 36078), (212, 36222), (213, 36234), (233, 36414), (236, 36432), (245, 36513), (249, 36549), (251, 36570), (255, 36636),

Gene: Blackdragon_84 Start: 34772, Stop: 37396, Start Num: 6

Candidate Starts for Blackdragon_84:

(Start: 6 @34772 has 150 MA's), (13, 34841), (Start: 14 @34847 has 2 MA's), (19, 34865), (24, 34901), (42, 35009), (45, 35021), (56, 35186), (57, 35192), (67, 35387), (70, 35408), (72, 35429), (73, 35438), (79, 35495), (81, 35537), (83, 35591), (84, 35636), (91, 35705), (93, 35741), (95, 35768), (97, 35795), (101, 35855), (104, 35888), (105, 35891), (109, 35921), (110, 35939), (117, 36080), (122, 36131), (135, 36341), (136, 36347), (140, 36386), (141, 36428), (143, 36440), (145, 36458), (164, 36632), (166, 36641), (167, 36644), (169, 36647), (171, 36659), (175, 36671), (176, 36674), (178, 36689), (195, 36776), (197, 36791), (212, 36935), (213, 36947), (233, 37127), (236, 37145), (245, 37226), (249, 37262), (251, 37283), (255, 37349),

Gene: Bonray_90 Start: 36351, Stop: 38975, Start Num: 6

Candidate Starts for Bonray_90:

(Start: 6 @36351 has 150 MA's), (13, 36420), (Start: 14 @36426 has 2 MA's), (19, 36444), (24, 36480), (42, 36588), (45, 36600), (56, 36765), (57, 36771), (67, 36966), (70, 36987), (72, 37008), (73, 37017), (79, 37074), (81, 37116), (83, 37170), (84, 37215), (91, 37284), (93, 37320), (95, 37347), (97, 37374), (101, 37434), (104, 37467), (105, 37470), (109, 37500), (110, 37518), (117, 37659), (122, 37710), (135, 37920), (136, 37926), (140, 37965), (141, 38007), (143, 38019), (145, 38037), (164, 38211), (166, 38220), (167, 38223), (169, 38226), (171, 38238), (175, 38250), (176, 38253), (178, 38268), (195, 38355), (197, 38370), (212, 38514), (213, 38526), (233, 38706), (236, 38724), (245, 38805), (249, 38841), (251, 38862), (255, 38928),

Gene: Bread_90 Start: 35846, Stop: 38470, Start Num: 6

Candidate Starts for Bread_90:

(Start: 6 @35846 has 150 MA's), (13, 35915), (Start: 14 @35921 has 2 MA's), (19, 35939), (24, 35975), (42, 36083), (45, 36095), (56, 36260), (57, 36266), (67, 36461), (70, 36482), (72, 36503), (73, 36512), (79, 36569), (81, 36611), (83, 36665), (84, 36710), (91, 36779), (93, 36815), (95, 36842), (97, 36869), (101, 36929), (104, 36962), (105, 36965), (108, 36986), (110, 37013), (113, 37085), (117, 37154), (122, 37205), (135, 37415), (136, 37421), (140, 37460), (141, 37502), (143, 37514), (145, 37532), (164, 37706), (166, 37715), (167, 37718), (169, 37721), (171, 37733), (175, 37745), (176, 37748), (178, 37763), (195, 37850), (197, 37865), (212, 38009), (213, 38021), (233, 38201), (236, 38219), (245, 38300), (249, 38336), (251, 38357), (255, 38423),

Gene: Breeniome_90 Start: 35069, Stop: 37693, Start Num: 6

Candidate Starts for Breeniome_90:

(Start: 6 @35069 has 150 MA's), (13, 35138), (Start: 14 @35144 has 2 MA's), (19, 35162), (24, 35198), (42, 35306), (45, 35318), (56, 35483), (57, 35489), (67, 35684), (70, 35705), (72, 35726), (73, 35735), (79, 35792), (81, 35834), (83, 35888), (84, 35933), (91, 36002), (93, 36038), (95, 36065), (97, 36092), (101, 36152), (104, 36185), (105, 36188), (109, 36218), (110, 36236), (117, 36377), (122, 36428), (135, 36638), (136, 36644), (140, 36683), (141, 36725), (143, 36737), (145, 36755), (164, 36929), (166, 36938), (167, 36941), (169, 36944), (171, 36956), (175, 36968), (176, 36971), (178, 36986), (195, 37073), (197, 37088), (212, 37232), (213, 37244), (233, 37424), (236, 37442), (245, 37523), (249, 37559), (251, 37580), (255, 37646),

Gene: Burrough_90 Start: 36503, Stop: 39127, Start Num: 6

Candidate Starts for Burrough_90:

(Start: 6 @36503 has 150 MA's), (13, 36572), (Start: 14 @36578 has 2 MA's), (19, 36596), (24, 36632), (42, 36740), (45, 36752), (56, 36917), (57, 36923), (67, 37118), (70, 37139), (72, 37160), (73, 37169), (79, 37226), (81, 37268), (83, 37322), (84, 37367), (91, 37436), (93, 37472), (95, 37499), (97, 37526), (101, 37586), (104, 37619), (105, 37622), (109, 37652), (110, 37670), (117, 37811), (122, 37862), (135, 38072), (136, 38078), (140, 38117), (141, 38159), (143, 38171), (145, 38189), (164, 38363), (166, 38372), (167, 38375), (169, 38378), (171, 38390), (175, 38402), (176, 38405), (178, 38420), (195, 38507), (197, 38522), (212, 38666), (213, 38678), (233, 38858), (236, 38876), (245, 38957), (249, 38993), (251, 39014), (255, 39080),

Gene: Bxz1_89 Start: 37554, Stop: 40178, Start Num: 6

Candidate Starts for Bxz1_89:

(Start: 6 @37554 has 150 MA's), (13, 37623), (Start: 14 @37629 has 2 MA's), (19, 37647), (24, 37683), (42, 37791), (45, 37803), (56, 37968), (57, 37974), (67, 38169), (70, 38190), (72, 38211), (73, 38220), (79, 38277), (81, 38319), (83, 38373), (84, 38418), (91, 38487), (93, 38523), (95, 38550), (97, 38577), (101, 38637), (104, 38670), (105, 38673), (109, 38703), (110, 38721), (117, 38862), (122, 38913), (135, 39123), (136, 39129), (140, 39168), (141, 39210), (143, 39222), (145, 39240), (164, 39414), (166, 39423), (167, 39426), (169, 39429), (171, 39441), (175, 39453), (176, 39456), (178, 39471), (195, 39558), (197, 39573), (212, 39717), (213, 39729), (233, 39909), (236, 39927), (245,

40008), (249, 40044), (251, 40065), (255, 40131),

Gene: Cactojaque_85 Start: 34187, Stop: 36790, Start Num: 6

Candidate Starts for Cactojaque_85:

(Start: 6 @34187 has 150 MA's), (13, 34256), (Start: 14 @34262 has 2 MA's), (19, 34280), (24, 34316), (42, 34424), (45, 34436), (56, 34601), (57, 34607), (67, 34802), (70, 34823), (72, 34844), (73, 34853), (79, 34910), (81, 34952), (83, 35006), (84, 35051), (91, 35120), (93, 35156), (95, 35183), (97, 35210), (101, 35270), (104, 35303), (105, 35306), (108, 35327), (110, 35354), (113, 35426), (117, 35495), (122, 35546), (135, 35756), (136, 35762), (137, 35768), (140, 35801), (141, 35843), (143, 35855), (145, 35873), (164, 36047), (166, 36056), (167, 36059), (169, 36062), (171, 36074), (175, 36086), (176, 36089), (178, 36104), (195, 36170), (197, 36185), (212, 36329), (213, 36341), (233, 36521), (236, 36539), (245, 36620), (249, 36656), (251, 36677), (255, 36743),

Gene: Cali_85 Start: 36080, Stop: 38704, Start Num: 6

Candidate Starts for Cali_85:

(Start: 6 @36080 has 150 MA's), (13, 36149), (Start: 14 @36155 has 2 MA's), (19, 36173), (24, 36209), (42, 36317), (45, 36329), (56, 36494), (57, 36500), (67, 36695), (70, 36716), (72, 36737), (73, 36746), (79, 36803), (81, 36845), (83, 36899), (84, 36944), (91, 37013), (93, 37049), (95, 37076), (97, 37103), (101, 37163), (104, 37196), (105, 37199), (109, 37229), (110, 37247), (117, 37388), (122, 37439), (135, 37649), (136, 37655), (140, 37694), (141, 37736), (143, 37748), (145, 37766), (164, 37940), (166, 37949), (167, 37952), (169, 37955), (171, 37967), (175, 37979), (176, 37982), (178, 37997), (195, 38084), (197, 38099), (212, 38243), (213, 38255), (233, 38435), (236, 38453), (245, 38534), (249, 38570), (251, 38591), (255, 38657),

Gene: Capablanca_92 Start: 36373, Stop: 38997, Start Num: 6

Candidate Starts for Capablanca_92:

(Start: 6 @36373 has 150 MA's), (13, 36442), (Start: 14 @36448 has 2 MA's), (19, 36466), (24, 36502), (42, 36610), (45, 36622), (56, 36787), (57, 36793), (67, 36988), (70, 37009), (72, 37030), (73, 37039), (79, 37096), (81, 37138), (83, 37192), (84, 37237), (91, 37306), (93, 37342), (95, 37369), (97, 37396), (101, 37456), (104, 37489), (105, 37492), (108, 37513), (110, 37540), (113, 37612), (117, 37681), (122, 37732), (135, 37942), (136, 37948), (140, 37987), (141, 38029), (143, 38041), (145, 38059), (164, 38233), (166, 38242), (167, 38245), (169, 38248), (171, 38260), (175, 38272), (176, 38275), (178, 38290), (195, 38377), (197, 38392), (212, 38536), (213, 38548), (233, 38728), (236, 38746), (245, 38827), (249, 38863), (251, 38884), (255, 38950),

Gene: Caravan_85 Start: 35898, Stop: 38501, Start Num: 6

Candidate Starts for Caravan_85:

(Start: 6 @35898 has 150 MA's), (13, 35967), (Start: 14 @35973 has 2 MA's), (19, 35991), (24, 36027), (42, 36135), (45, 36147), (56, 36312), (57, 36318), (67, 36513), (70, 36534), (72, 36555), (73, 36564), (79, 36621), (81, 36663), (83, 36717), (84, 36762), (91, 36831), (93, 36867), (95, 36894), (97, 36921), (101, 36981), (104, 37014), (105, 37017), (109, 37047), (110, 37065), (117, 37206), (122, 37257), (135, 37467), (136, 37473), (140, 37512), (141, 37554), (143, 37566), (145, 37584), (164, 37758), (166, 37767), (167, 37770), (169, 37773), (171, 37785), (175, 37797), (176, 37800), (178, 37815), (195, 37881), (197, 37896), (212, 38040), (213, 38052), (233, 38232), (236, 38250), (245, 38331), (249, 38367), (251, 38388), (255, 38454),

Gene: Catera_88 Start: 34352, Stop: 36955, Start Num: 6

Candidate Starts for Catera_88:

(Start: 6 @34352 has 150 MA's), (13, 34421), (Start: 14 @34427 has 2 MA's), (19, 34445), (24, 34481), (42, 34589), (45, 34601), (56, 34766), (57, 34772), (67, 34967), (70, 34988), (72, 35009), (73, 35018), (79, 35075), (81, 35117), (83, 35171), (84, 35216), (91, 35285), (93, 35321), (95, 35348), (97, 35375), (101, 35435), (104, 35468), (105, 35471), (108, 35492), (110, 35519), (113, 35591), (117, 35660), (122, 35711), (135, 35921), (136, 35927), (137, 35933), (140, 35966), (141, 36008), (143,

36020), (145, 36038), (164, 36212), (166, 36221), (167, 36224), (169, 36227), (171, 36239), (175, 36251), (176, 36254), (178, 36269), (195, 36335), (197, 36350), (212, 36494), (213, 36506), (233, 36686), (236, 36704), (245, 36785), (249, 36821), (251, 36842), (255, 36908),

Gene: Chargie21_86 Start: 34263, Stop: 36866, Start Num: 6

Candidate Starts for Chargie21_86:

(Start: 6 @34263 has 150 MA's), (13, 34332), (Start: 14 @34338 has 2 MA's), (19, 34356), (24, 34392), (42, 34500), (45, 34512), (56, 34677), (57, 34683), (67, 34878), (70, 34899), (72, 34920), (73, 34929), (79, 34986), (81, 35028), (83, 35082), (84, 35127), (91, 35196), (93, 35232), (95, 35259), (97, 35286), (101, 35346), (104, 35379), (105, 35382), (108, 35403), (110, 35430), (113, 35502), (117, 35571), (122, 35622), (135, 35832), (136, 35838), (137, 35844), (140, 35877), (141, 35919), (143, 35931), (145, 35949), (164, 36123), (166, 36132), (167, 36135), (169, 36138), (171, 36150), (175, 36162), (176, 36165), (178, 36180), (195, 36246), (197, 36261), (212, 36405), (213, 36417), (233, 36597), (236, 36615), (245, 36696), (249, 36732), (251, 36753), (255, 36819),

Gene: CharlieB_85 Start: 34078, Stop: 36702, Start Num: 6

Candidate Starts for CharlieB_85:

(Start: 6 @34078 has 150 MA's), (13, 34147), (Start: 14 @34153 has 2 MA's), (19, 34171), (24, 34207), (42, 34315), (45, 34327), (56, 34492), (57, 34498), (67, 34693), (70, 34714), (72, 34735), (73, 34744), (79, 34801), (81, 34843), (83, 34897), (84, 34942), (91, 35011), (93, 35047), (95, 35074), (97, 35101), (101, 35161), (104, 35194), (105, 35197), (109, 35227), (110, 35245), (117, 35386), (122, 35437), (135, 35647), (136, 35653), (140, 35692), (141, 35734), (143, 35746), (145, 35764), (164, 35938), (166, 35947), (167, 35950), (169, 35953), (171, 35965), (175, 35977), (176, 35980), (178, 35995), (195, 36082), (197, 36097), (212, 36241), (213, 36253), (233, 36433), (236, 36451), (245, 36532), (249, 36568), (251, 36589), (255, 36655),

Gene: ChaylaJr_85 Start: 33978, Stop: 36581, Start Num: 6

Candidate Starts for ChaylaJr_85:

(Start: 6 @33978 has 150 MA's), (13, 34047), (Start: 14 @34053 has 2 MA's), (19, 34071), (24, 34107), (42, 34215), (45, 34227), (56, 34392), (57, 34398), (67, 34593), (70, 34614), (72, 34635), (73, 34644), (79, 34701), (81, 34743), (83, 34797), (84, 34842), (91, 34911), (93, 34947), (95, 34974), (97, 35001), (101, 35061), (104, 35094), (105, 35097), (108, 35118), (110, 35145), (113, 35217), (117, 35286), (122, 35337), (135, 35547), (136, 35553), (137, 35559), (140, 35592), (141, 35634), (143, 35646), (145, 35664), (164, 35838), (166, 35847), (167, 35850), (169, 35853), (171, 35865), (175, 35877), (176, 35880), (178, 35895), (195, 35961), (197, 35976), (212, 36120), (213, 36132), (233, 36312), (236, 36330), (245, 36411), (249, 36447), (251, 36468), (255, 36534),

Gene: CherryTomatoes_88 Start: 36603, Stop: 39215, Start Num: 6

Candidate Starts for CherryTomatoes_88:

(Start: 6 @36603 has 150 MA's), (Start: 9 @36621 has 1 MA's), (21, 36720), (27, 36759), (42, 36822), (45, 36834), (48, 36864), (59, 37053), (61, 37080), (67, 37200), (69, 37209), (70, 37221), (71, 37227), (72, 37242), (73, 37251), (74, 37263), (76, 37275), (82, 37389), (84, 37449), (87, 37476), (90, 37515), (91, 37518), (93, 37554), (94, 37578), (101, 37668), (110, 37752), (112, 37797), (115, 37881), (116, 37890), (117, 37893), (122, 37944), (123, 37947), (135, 38154), (136, 38160), (141, 38241), (142, 38250), (143, 38253), (145, 38271), (148, 38289), (152, 38340), (155, 38382), (160, 38424), (163, 38439), (167, 38448), (174, 38466), (175, 38469), (177, 38481), (182, 38493), (184, 38508), (185, 38511), (191, 38541), (202, 38637), (210, 38715), (216, 38760), (219, 38799), (230, 38901), (237, 38976), (240, 39000), (241, 39003), (249, 39075), (255, 39168), (256, 39177), (257, 39189),

Gene: ChickenPhender_86 Start: 34311, Stop: 36914, Start Num: 6

Candidate Starts for ChickenPhender_86:

(Start: 6 @34311 has 150 MA's), (13, 34380), (Start: 14 @34386 has 2 MA's), (19, 34404), (24, 34440), (42, 34548), (45, 34560), (56, 34725), (57, 34731), (67, 34926), (70, 34947), (72, 34968), (73,

34977), (79, 35034), (81, 35076), (83, 35130), (84, 35175), (91, 35244), (93, 35280), (95, 35307), (97, 35334), (101, 35394), (104, 35427), (105, 35430), (108, 35451), (110, 35478), (113, 35550), (117, 35619), (122, 35670), (135, 35880), (136, 35886), (137, 35892), (140, 35925), (141, 35967), (143, 35979), (145, 35997), (164, 36171), (166, 36180), (167, 36183), (169, 36186), (171, 36198), (175, 36210), (176, 36213), (178, 36228), (195, 36294), (197, 36309), (212, 36453), (213, 36465), (233, 36645), (236, 36663), (245, 36744), (249, 36780), (251, 36801), (255, 36867),

Gene: Concombre_97 Start: 38489, Stop: 41113, Start Num: 6

Candidate Starts for Concombre_97:

(Start: 6 @38489 has 150 MA's), (13, 38558), (Start: 14 @38564 has 2 MA's), (19, 38582), (24, 38618), (42, 38726), (45, 38738), (56, 38903), (57, 38909), (67, 39104), (70, 39125), (72, 39146), (73, 39155), (79, 39212), (81, 39254), (83, 39308), (84, 39353), (91, 39422), (93, 39458), (95, 39485), (97, 39512), (101, 39572), (104, 39605), (105, 39608), (109, 39638), (110, 39656), (117, 39797), (122, 39848), (135, 40058), (136, 40064), (140, 40103), (141, 40145), (143, 40157), (145, 40175), (164, 40349), (166, 40358), (167, 40361), (169, 40364), (171, 40376), (175, 40388), (176, 40391), (178, 40406), (195, 40493), (197, 40508), (212, 40652), (213, 40664), (233, 40844), (236, 40862), (245, 40943), (249, 40979), (251, 41000), (255, 41066),

Gene: DTDevon_91 Start: 36409, Stop: 39033, Start Num: 6

Candidate Starts for DTDevon_91:

(Start: 6 @36409 has 150 MA's), (13, 36478), (Start: 14 @36484 has 2 MA's), (19, 36502), (24, 36538), (42, 36646), (45, 36658), (56, 36823), (57, 36829), (67, 37024), (70, 37045), (72, 37066), (73, 37075), (79, 37132), (81, 37174), (83, 37228), (84, 37273), (91, 37342), (93, 37378), (95, 37405), (97, 37432), (101, 37492), (104, 37525), (105, 37528), (109, 37558), (110, 37576), (117, 37717), (122, 37768), (135, 37978), (136, 37984), (140, 38023), (141, 38065), (143, 38077), (145, 38095), (164, 38269), (166, 38278), (167, 38281), (169, 38284), (171, 38296), (175, 38308), (176, 38311), (178, 38326), (195, 38413), (197, 38428), (212, 38572), (213, 38584), (233, 38764), (236, 38782), (245, 38863), (249, 38899), (251, 38920), (255, 38986),

Gene: Daffodil_95 Start: 36242, Stop: 38866, Start Num: 6

Candidate Starts for Daffodil_95:

(Start: 6 @36242 has 150 MA's), (13, 36311), (Start: 14 @36317 has 2 MA's), (19, 36335), (24, 36371), (42, 36479), (45, 36491), (56, 36656), (57, 36662), (67, 36857), (70, 36878), (72, 36899), (73, 36908), (79, 36965), (81, 37007), (83, 37061), (84, 37106), (91, 37175), (93, 37211), (95, 37238), (97, 37265), (101, 37325), (104, 37358), (105, 37361), (109, 37391), (110, 37409), (117, 37550), (122, 37601), (135, 37811), (136, 37817), (140, 37856), (141, 37898), (143, 37910), (145, 37928), (164, 38102), (166, 38111), (167, 38114), (169, 38117), (171, 38129), (175, 38141), (176, 38144), (178, 38159), (195, 38246), (197, 38261), (212, 38405), (213, 38417), (233, 38597), (236, 38615), (245, 38696), (249, 38732), (251, 38753), (255, 38819),

Gene: Dandelion_97 Start: 38939, Stop: 41563, Start Num: 6

Candidate Starts for Dandelion_97:

(Start: 6 @38939 has 150 MA's), (13, 39008), (Start: 14 @39014 has 2 MA's), (19, 39032), (24, 39068), (42, 39176), (45, 39188), (56, 39353), (57, 39359), (67, 39554), (70, 39575), (72, 39596), (73, 39605), (79, 39662), (81, 39704), (83, 39758), (84, 39803), (91, 39872), (93, 39908), (95, 39935), (97, 39962), (101, 40022), (104, 40055), (105, 40058), (109, 40088), (110, 40106), (117, 40247), (122, 40298), (135, 40508), (136, 40514), (140, 40553), (141, 40595), (143, 40607), (145, 40625), (164, 40799), (166, 40808), (167, 40811), (169, 40814), (171, 40826), (175, 40838), (176, 40841), (178, 40856), (195, 40943), (197, 40958), (212, 41102), (213, 41114), (233, 41294), (236, 41312), (245, 41393), (249, 41429), (251, 41450), (255, 41516),

Gene: Darko_90 Start: 36177, Stop: 38801, Start Num: 6

Candidate Starts for Darko_90:

(Start: 6 @36177 has 150 MA's), (13, 36246), (Start: 14 @36252 has 2 MA's), (19, 36270), (24, 36306), (42, 36414), (45, 36426), (56, 36591), (57, 36597), (67, 36792), (70, 36813), (72, 36834), (73, 36843), (79, 36900), (81, 36942), (83, 36996), (84, 37041), (91, 37110), (93, 37146), (95, 37173), (97, 37200), (101, 37260), (104, 37293), (105, 37296), (109, 37326), (110, 37344), (117, 37485), (122, 37536), (135, 37746), (136, 37752), (137, 37758), (140, 37791), (141, 37833), (143, 37845), (145, 37863), (164, 38037), (166, 38046), (167, 38049), (169, 38052), (171, 38064), (175, 38076), (176, 38079), (178, 38094), (195, 38181), (197, 38196), (212, 38340), (213, 38352), (233, 38532), (236, 38550), (245, 38631), (249, 38667), (251, 38688), (255, 38754),

Gene: Delilah_90 Start: 36243, Stop: 38867, Start Num: 6

Candidate Starts for Delilah_90:

(Start: 6 @36243 has 150 MA's), (13, 36312), (Start: 14 @36318 has 2 MA's), (19, 36336), (24, 36372), (42, 36480), (45, 36492), (56, 36657), (57, 36663), (67, 36858), (70, 36879), (72, 36900), (73, 36909), (79, 36966), (81, 37008), (83, 37062), (84, 37107), (91, 37176), (93, 37212), (95, 37239), (97, 37266), (101, 37326), (104, 37359), (105, 37362), (109, 37392), (110, 37410), (117, 37551), (122, 37602), (135, 37812), (136, 37818), (140, 37857), (141, 37899), (143, 37911), (145, 37929), (164, 38103), (166, 38112), (167, 38115), (169, 38118), (171, 38130), (175, 38142), (176, 38145), (178, 38160), (195, 38247), (197, 38262), (212, 38406), (213, 38418), (233, 38598), (236, 38616), (245, 38697), (249, 38733), (251, 38754), (255, 38820),

Gene: Delylah_93 Start: 36036, Stop: 38660, Start Num: 6

Candidate Starts for Delylah_93:

(Start: 6 @36036 has 150 MA's), (13, 36105), (Start: 14 @36111 has 2 MA's), (19, 36129), (24, 36165), (42, 36273), (45, 36285), (56, 36450), (57, 36456), (67, 36651), (70, 36672), (72, 36693), (73, 36702), (79, 36759), (81, 36801), (83, 36855), (84, 36900), (91, 36969), (93, 37005), (95, 37032), (97, 37059), (101, 37119), (104, 37152), (105, 37155), (109, 37185), (110, 37203), (117, 37344), (122, 37395), (135, 37605), (136, 37611), (140, 37650), (141, 37692), (143, 37704), (145, 37722), (164, 37896), (166, 37905), (167, 37908), (169, 37911), (171, 37923), (175, 37935), (176, 37938), (178, 37953), (195, 38040), (197, 38055), (212, 38199), (213, 38211), (233, 38391), (236, 38409), (245, 38490), (249, 38526), (251, 38547), (255, 38613),

Gene: Demodog_97 Start: 38489, Stop: 41113, Start Num: 6

Candidate Starts for Demodog_97:

(Start: 6 @38489 has 150 MA's), (13, 38558), (Start: 14 @38564 has 2 MA's), (19, 38582), (24, 38618), (42, 38726), (45, 38738), (56, 38903), (57, 38909), (67, 39104), (70, 39125), (72, 39146), (73, 39155), (79, 39212), (81, 39254), (83, 39308), (84, 39353), (91, 39422), (93, 39458), (95, 39485), (97, 39512), (101, 39572), (104, 39605), (105, 39608), (109, 39638), (110, 39656), (117, 39797), (122, 39848), (135, 40058), (136, 40064), (140, 40103), (141, 40145), (143, 40157), (145, 40175), (164, 40349), (166, 40358), (167, 40361), (169, 40364), (171, 40376), (175, 40388), (176, 40391), (178, 40406), (195, 40493), (197, 40508), (212, 40652), (213, 40664), (233, 40844), (236, 40862), (245, 40943), (249, 40979), (251, 41000), (255, 41066),

Gene: Dietrick_82 Start: 34014, Stop: 36617, Start Num: 6

Candidate Starts for Dietrick_82:

(Start: 6 @34014 has 150 MA's), (13, 34083), (Start: 14 @34089 has 2 MA's), (19, 34107), (24, 34143), (42, 34251), (45, 34263), (56, 34428), (57, 34434), (67, 34629), (70, 34650), (72, 34671), (73, 34680), (79, 34737), (81, 34779), (83, 34833), (84, 34878), (91, 34947), (93, 34983), (95, 35010), (97, 35037), (101, 35097), (104, 35130), (105, 35133), (108, 35154), (110, 35181), (113, 35253), (117, 35322), (122, 35373), (135, 35583), (136, 35589), (137, 35595), (140, 35628), (141, 35670), (143, 35682), (145, 35700), (164, 35874), (166, 35883), (167, 35886), (169, 35889), (171, 35901), (175, 35913), (176, 35916), (178, 35931), (195, 35997), (197, 36012), (212, 36156), (213, 36168), (233, 36348), (236, 36366), (245, 36447), (249, 36483), (251, 36504), (255, 36570),

Gene: DirtMonster_83 Start: 34835, Stop: 37459, Start Num: 6

Candidate Starts for DirtMonster_83:

(Start: 6 @34835 has 150 MA's), (13, 34904), (Start: 14 @34910 has 2 MA's), (19, 34928), (24, 34964), (42, 35072), (45, 35084), (56, 35249), (57, 35255), (67, 35450), (70, 35471), (72, 35492), (73, 35501), (79, 35558), (81, 35600), (83, 35654), (84, 35699), (91, 35768), (93, 35804), (95, 35831), (97, 35858), (101, 35918), (104, 35951), (105, 35954), (109, 35984), (110, 36002), (117, 36143), (122, 36194), (135, 36404), (136, 36410), (137, 36416), (140, 36449), (141, 36491), (143, 36503), (145, 36521), (164, 36695), (166, 36704), (167, 36707), (169, 36710), (171, 36722), (175, 36734), (176, 36737), (178, 36752), (195, 36839), (197, 36854), (212, 36998), (213, 37010), (233, 37190), (236, 37208), (245, 37289), (249, 37325), (251, 37346), (255, 37412),

Gene: Domi_84 Start: 35571, Stop: 38195, Start Num: 6

Candidate Starts for Domi_84:

(Start: 6 @35571 has 150 MA's), (13, 35640), (Start: 14 @35646 has 2 MA's), (19, 35664), (24, 35700), (42, 35808), (45, 35820), (56, 35985), (57, 35991), (67, 36186), (70, 36207), (72, 36228), (73, 36237), (79, 36294), (81, 36336), (83, 36390), (84, 36435), (91, 36504), (93, 36540), (95, 36567), (97, 36594), (101, 36654), (104, 36687), (105, 36690), (109, 36720), (110, 36738), (117, 36879), (122, 36930), (135, 37140), (136, 37146), (137, 37152), (140, 37185), (141, 37227), (143, 37239), (145, 37257), (164, 37431), (166, 37440), (167, 37443), (169, 37446), (171, 37458), (175, 37470), (176, 37473), (178, 37488), (195, 37575), (197, 37590), (212, 37734), (213, 37746), (233, 37926), (236, 37944), (245, 38025), (249, 38061), (251, 38082), (255, 38148),

Gene: DrPhinkDaddy_89 Start: 36298, Stop: 38922, Start Num: 6

Candidate Starts for DrPhinkDaddy_89:

(Start: 6 @36298 has 150 MA's), (13, 36367), (Start: 14 @36373 has 2 MA's), (19, 36391), (24, 36427), (42, 36535), (45, 36547), (56, 36712), (57, 36718), (67, 36913), (70, 36934), (72, 36955), (73, 36964), (79, 37021), (81, 37063), (83, 37117), (84, 37162), (91, 37231), (93, 37267), (95, 37294), (97, 37321), (101, 37381), (104, 37414), (105, 37417), (109, 37447), (110, 37465), (117, 37606), (122, 37657), (135, 37867), (136, 37873), (140, 37912), (141, 37954), (143, 37966), (145, 37984), (164, 38158), (166, 38167), (167, 38170), (169, 38173), (171, 38185), (175, 38197), (176, 38200), (178, 38215), (195, 38302), (197, 38317), (212, 38461), (213, 38473), (233, 38653), (236, 38671), (245, 38752), (249, 38788), (251, 38809), (255, 38875),

Gene: Drazdys_90 Start: 36040, Stop: 38664, Start Num: 6

Candidate Starts for Drazdys_90:

(Start: 6 @36040 has 150 MA's), (13, 36109), (Start: 14 @36115 has 2 MA's), (19, 36133), (24, 36169), (42, 36277), (45, 36289), (56, 36454), (57, 36460), (67, 36655), (70, 36676), (72, 36697), (73, 36706), (79, 36763), (81, 36805), (83, 36859), (84, 36904), (91, 36973), (93, 37009), (95, 37036), (97, 37063), (101, 37123), (102, 37135), (104, 37156), (105, 37159), (109, 37189), (110, 37207), (117, 37348), (122, 37399), (135, 37609), (136, 37615), (140, 37654), (141, 37696), (143, 37708), (145, 37726), (164, 37900), (166, 37909), (167, 37912), (169, 37915), (171, 37927), (175, 37939), (176, 37942), (178, 37957), (195, 38044), (197, 38059), (212, 38203), (213, 38215), (233, 38395), (236, 38413), (245, 38494), (249, 38530), (251, 38551), (255, 38617),

Gene: E3_gp72 Start: 32680, Stop: 35169, Start Num: 10

Candidate Starts for E3_gp72:

(5, 32617), (7, 32665), (Start: 10 @32680 has 3 MA's), (11, 32698), (15, 32737), (20, 32776), (35, 32887), (41, 32908), (50, 33019), (56, 33106), (57, 33112), (58, 33121), (59, 33163), (60, 33169), (69, 33313), (70, 33325), (72, 33346), (74, 33367), (85, 33532), (86, 33541), (88, 33574), (89, 33577), (91, 33598), (92, 33601), (101, 33748), (104, 33781), (105, 33784), (108, 33805), (109, 33814), (110, 33832), (112, 33877), (116, 33970), (117, 33973), (119, 33994), (130, 34141), (131, 34156), (145, 34351), (150, 34405), (155, 34462), (159, 34489), (161, 34495), (166, 34516), (175, 34537), (176, 34540), (179, 34558), (183, 34567), (187, 34573), (189, 34579), (200, 34678), (203, 34684), (204,

34705), (207, 34723), (214, 34768), (215, 34777), (218, 34813), (227, 34882), (229, 34894), (234, 34948), (235, 34954), (246, 35014), (257, 35143),

Gene: EasyJones_93 Start: 35370, Stop: 37973, Start Num: 6

Candidate Starts for EasyJones_93:

(Start: 6 @35370 has 150 MA's), (13, 35439), (Start: 14 @35445 has 2 MA's), (19, 35463), (24, 35499), (42, 35607), (45, 35619), (56, 35784), (57, 35790), (67, 35985), (70, 36006), (72, 36027), (73, 36036), (79, 36093), (81, 36135), (83, 36189), (84, 36234), (91, 36303), (93, 36339), (95, 36366), (97, 36393), (101, 36453), (104, 36486), (105, 36489), (108, 36510), (110, 36537), (113, 36609), (117, 36678), (122, 36729), (135, 36939), (136, 36945), (137, 36951), (140, 36984), (141, 37026), (143, 37038), (145, 37056), (164, 37230), (166, 37239), (167, 37242), (169, 37245), (171, 37257), (175, 37269), (176, 37272), (178, 37287), (195, 37353), (197, 37368), (212, 37512), (213, 37524), (233, 37704), (236, 37722), (245, 37803), (249, 37839), (251, 37860), (255, 37926),

Gene: EggyFarm_98 Start: 38300, Stop: 40924, Start Num: 6

Candidate Starts for EggyFarm_98:

(Start: 6 @38300 has 150 MA's), (13, 38369), (Start: 14 @38375 has 2 MA's), (19, 38393), (24, 38429), (42, 38537), (45, 38549), (57, 38720), (67, 38915), (70, 38936), (72, 38957), (73, 38966), (79, 39023), (81, 39065), (83, 39119), (84, 39164), (91, 39233), (93, 39269), (95, 39296), (97, 39323), (101, 39383), (104, 39416), (105, 39419), (109, 39449), (110, 39467), (117, 39608), (122, 39659), (135, 39869), (136, 39875), (137, 39881), (140, 39914), (141, 39956), (143, 39968), (145, 39986), (164, 40160), (166, 40169), (167, 40172), (169, 40175), (171, 40187), (175, 40199), (176, 40202), (178, 40217), (195, 40304), (197, 40319), (212, 40463), (213, 40475), (233, 40655), (236, 40673), (245, 40754), (249, 40790), (251, 40811), (255, 40877),

Gene: EmToTheThree_93 Start: 37694, Stop: 40318, Start Num: 6

Candidate Starts for EmToTheThree_93:

(Start: 6 @37694 has 150 MA's), (13, 37763), (Start: 14 @37769 has 2 MA's), (19, 37787), (24, 37823), (42, 37931), (45, 37943), (56, 38108), (57, 38114), (67, 38309), (70, 38330), (72, 38351), (73, 38360), (79, 38417), (81, 38459), (83, 38513), (84, 38558), (91, 38627), (93, 38663), (95, 38690), (97, 38717), (101, 38777), (104, 38810), (105, 38813), (109, 38843), (110, 38861), (117, 39002), (122, 39053), (135, 39263), (136, 39269), (140, 39308), (141, 39350), (143, 39362), (145, 39380), (164, 39554), (166, 39563), (167, 39566), (169, 39569), (171, 39581), (175, 39593), (176, 39596), (178, 39611), (195, 39698), (197, 39713), (212, 39857), (213, 39869), (233, 40049), (236, 40067), (245, 40148), (249, 40184), (251, 40205), (255, 40271),

Gene: EmmaElysia_89 Start: 34815, Stop: 37439, Start Num: 6

Candidate Starts for EmmaElysia_89:

(Start: 6 @34815 has 150 MA's), (13, 34884), (Start: 14 @34890 has 2 MA's), (19, 34908), (24, 34944), (42, 35052), (45, 35064), (56, 35229), (57, 35235), (67, 35430), (70, 35451), (72, 35472), (73, 35481), (79, 35538), (81, 35580), (83, 35634), (84, 35679), (91, 35748), (93, 35784), (95, 35811), (97, 35838), (101, 35898), (104, 35931), (105, 35934), (109, 35964), (110, 35982), (117, 36123), (122, 36174), (135, 36384), (136, 36390), (140, 36429), (141, 36471), (143, 36483), (145, 36501), (164, 36675), (166, 36684), (167, 36687), (169, 36690), (171, 36702), (175, 36714), (176, 36717), (178, 36732), (195, 36819), (197, 36834), (212, 36978), (213, 36990), (233, 37170), (236, 37188), (245, 37269), (249, 37305), (251, 37326), (255, 37392),

Gene: Erdmann_91 Start: 36243, Stop: 38867, Start Num: 6

Candidate Starts for Erdmann_91:

(Start: 6 @36243 has 150 MA's), (13, 36312), (Start: 14 @36318 has 2 MA's), (19, 36336), (24, 36372), (42, 36480), (45, 36492), (56, 36657), (57, 36663), (67, 36858), (70, 36879), (72, 36900), (73, 36909), (79, 36966), (81, 37008), (83, 37062), (84, 37107), (91, 37176), (93, 37212), (95, 37239), (97, 37266), (101, 37326), (104, 37359), (105, 37362), (109, 37392), (110, 37410), (117, 37551), (122,

37602), (135, 37812), (136, 37818), (140, 37857), (141, 37899), (143, 37911), (145, 37929), (164, 38103), (166, 38112), (167, 38115), (169, 38118), (171, 38130), (175, 38142), (176, 38145), (178, 38160), (195, 38247), (197, 38262), (212, 38406), (213, 38418), (233, 38598), (236, 38616), (245, 38697), (249, 38733), (251, 38754), (255, 38820),

Gene: ErnieJ_86 Start: 34292, Stop: 36895, Start Num: 6

Candidate Starts for ErnieJ_86:

(Start: 6 @34292 has 150 MA's), (13, 34361), (Start: 14 @34367 has 2 MA's), (19, 34385), (24, 34421), (42, 34529), (45, 34541), (56, 34706), (57, 34712), (67, 34907), (70, 34928), (72, 34949), (73, 34958), (79, 35015), (81, 35057), (83, 35111), (84, 35156), (91, 35225), (93, 35261), (95, 35288), (97, 35315), (101, 35375), (104, 35408), (105, 35411), (108, 35432), (110, 35459), (113, 35531), (117, 35600), (122, 35651), (135, 35861), (136, 35867), (137, 35873), (140, 35906), (141, 35948), (143, 35960), (145, 35978), (164, 36152), (166, 36161), (167, 36164), (169, 36167), (171, 36179), (175, 36191), (176, 36194), (178, 36209), (195, 36275), (197, 36290), (212, 36434), (213, 36446), (233, 36626), (236, 36644), (245, 36725), (249, 36761), (251, 36782), (255, 36848),

Gene: Ewok_91 Start: 35870, Stop: 38494, Start Num: 6

Candidate Starts for Ewok_91:

(Start: 6 @35870 has 150 MA's), (13, 35939), (Start: 14 @35945 has 2 MA's), (19, 35963), (24, 35999), (42, 36107), (45, 36119), (56, 36284), (57, 36290), (67, 36485), (70, 36506), (72, 36527), (73, 36536), (79, 36593), (81, 36635), (83, 36689), (84, 36734), (91, 36803), (93, 36839), (95, 36866), (97, 36893), (101, 36953), (104, 36986), (105, 36989), (109, 37019), (110, 37037), (117, 37178), (122, 37229), (135, 37439), (136, 37445), (140, 37484), (141, 37526), (143, 37538), (145, 37556), (164, 37730), (166, 37739), (167, 37742), (169, 37745), (171, 37757), (175, 37769), (176, 37772), (178, 37787), (195, 37874), (197, 37889), (212, 38033), (213, 38045), (233, 38225), (236, 38243), (245, 38324), (249, 38360), (251, 38381), (255, 38447),

Gene: Finch_15 Start: 10444, Stop: 13083, Start Num: 10

Candidate Starts for Finch_15:

(Start: 10 @10444 has 3 MA's), (30, 10603), (37, 10642), (44, 10675), (47, 10702), (53, 10783), (59, 10900), (60, 10906), (69, 11050), (70, 11062), (74, 11104), (75, 11107), (78, 11134), (92, 11353), (93, 11386), (101, 11500), (104, 11533), (107, 11551), (109, 11566), (112, 11629), (116, 11722), (117, 11725), (129, 11863), (130, 11893), (133, 11923), (136, 11992), (138, 12007), (141, 12073), (145, 12103), (149, 12133), (154, 12196), (165, 12277), (170, 12292), (172, 12301), (181, 12334), (193, 12391), (198, 12457), (206, 12556), (219, 12649), (222, 12682), (224, 12688), (237, 12826), (238, 12835), (242, 12868), (244, 12892), (247, 12913), (253, 13024), (255, 13036),

Gene: Flabslab_85 Start: 34048, Stop: 36651, Start Num: 6

Candidate Starts for Flabslab_85:

(Start: 6 @34048 has 150 MA's), (13, 34117), (Start: 14 @34123 has 2 MA's), (19, 34141), (24, 34177), (42, 34285), (45, 34297), (56, 34462), (57, 34468), (67, 34663), (70, 34684), (72, 34705), (73, 34714), (79, 34771), (81, 34813), (83, 34867), (84, 34912), (91, 34981), (93, 35017), (95, 35044), (97, 35071), (101, 35131), (104, 35164), (105, 35167), (108, 35188), (110, 35215), (113, 35287), (117, 35356), (122, 35407), (135, 35617), (136, 35623), (137, 35629), (140, 35662), (141, 35704), (143, 35716), (145, 35734), (164, 35908), (166, 35917), (167, 35920), (169, 35923), (171, 35935), (175, 35947), (176, 35950), (178, 35965), (195, 36031), (197, 36046), (212, 36190), (213, 36202), (233, 36382), (236, 36400), (245, 36481), (249, 36517), (251, 36538), (255, 36604),

Gene: Fludd_90 Start: 34710, Stop: 37313, Start Num: 6

Candidate Starts for Fludd_90:

(Start: 6 @34710 has 150 MA's), (13, 34779), (Start: 14 @34785 has 2 MA's), (19, 34803), (24, 34839), (42, 34947), (45, 34959), (56, 35124), (57, 35130), (67, 35325), (70, 35346), (72, 35367), (73, 35376), (79, 35433), (81, 35475), (83, 35529), (84, 35574), (91, 35643), (93, 35679), (95, 35706), (97,

35733), (101, 35793), (104, 35826), (105, 35829), (108, 35850), (110, 35877), (113, 35949), (117, 36018), (122, 36069), (135, 36279), (136, 36285), (137, 36291), (140, 36324), (141, 36366), (143, 36378), (145, 36396), (164, 36570), (166, 36579), (167, 36582), (169, 36585), (171, 36597), (175, 36609), (176, 36612), (178, 36627), (195, 36693), (197, 36708), (212, 36852), (213, 36864), (233, 37044), (236, 37062), (245, 37143), (249, 37179), (251, 37200), (255, 37266),

Gene: FoxtrotP1_90 Start: 36642, Stop: 39266, Start Num: 6

Candidate Starts for FoxtrotP1_90:

(Start: 6 @36642 has 150 MA's), (13, 36711), (Start: 14 @36717 has 2 MA's), (19, 36735), (24, 36771), (42, 36879), (45, 36891), (56, 37056), (57, 37062), (67, 37257), (70, 37278), (72, 37299), (73, 37308), (79, 37365), (81, 37407), (83, 37461), (84, 37506), (91, 37575), (93, 37611), (95, 37638), (97, 37665), (101, 37725), (104, 37758), (105, 37761), (109, 37791), (110, 37809), (117, 37950), (122, 38001), (135, 38211), (136, 38217), (140, 38256), (141, 38298), (143, 38310), (145, 38328), (164, 38502), (166, 38511), (167, 38514), (169, 38517), (171, 38529), (175, 38541), (176, 38544), (178, 38559), (195, 38646), (197, 38661), (212, 38805), (213, 38817), (233, 38997), (236, 39015), (245, 39096), (249, 39132), (251, 39153), (255, 39219),

Gene: FrayBell_96 Start: 37692, Stop: 40316, Start Num: 6

Candidate Starts for FrayBell_96:

(Start: 6 @37692 has 150 MA's), (13, 37761), (Start: 14 @37767 has 2 MA's), (19, 37785), (24, 37821), (42, 37929), (45, 37941), (56, 38106), (57, 38112), (67, 38307), (70, 38328), (72, 38349), (73, 38358), (79, 38415), (81, 38457), (83, 38511), (84, 38556), (91, 38625), (93, 38661), (95, 38688), (97, 38715), (101, 38775), (104, 38808), (105, 38811), (109, 38841), (110, 38859), (117, 39000), (122, 39051), (135, 39261), (136, 39267), (137, 39273), (140, 39306), (141, 39348), (143, 39360), (145, 39378), (164, 39552), (166, 39561), (167, 39564), (169, 39567), (171, 39579), (175, 39591), (176, 39594), (178, 39609), (195, 39696), (197, 39711), (212, 39855), (213, 39867), (233, 40047), (236, 40065), (245, 40146), (249, 40182), (251, 40203), (255, 40269),

Gene: FudgeTart_90 Start: 35436, Stop: 38060, Start Num: 6

Candidate Starts for FudgeTart_90:

(Start: 6 @35436 has 150 MA's), (13, 35505), (Start: 14 @35511 has 2 MA's), (19, 35529), (24, 35565), (42, 35673), (45, 35685), (56, 35850), (57, 35856), (67, 36051), (70, 36072), (72, 36093), (73, 36102), (79, 36159), (81, 36201), (83, 36255), (84, 36300), (91, 36369), (93, 36405), (95, 36432), (97, 36459), (101, 36519), (104, 36552), (105, 36555), (109, 36585), (110, 36603), (117, 36744), (122, 36795), (135, 37005), (136, 37011), (140, 37050), (141, 37092), (143, 37104), (145, 37122), (164, 37296), (166, 37305), (167, 37308), (169, 37311), (171, 37323), (175, 37335), (176, 37338), (178, 37353), (195, 37440), (197, 37455), (212, 37599), (213, 37611), (233, 37791), (236, 37809), (245, 37890), (249, 37926), (251, 37947), (255, 38013),

Gene: Gabriel_92 Start: 35478, Stop: 38102, Start Num: 6

Candidate Starts for Gabriel_92:

(Start: 6 @35478 has 150 MA's), (13, 35547), (Start: 14 @35553 has 2 MA's), (19, 35571), (24, 35607), (42, 35715), (45, 35727), (56, 35892), (57, 35898), (67, 36093), (70, 36114), (72, 36135), (73, 36144), (79, 36201), (81, 36243), (83, 36297), (84, 36342), (91, 36411), (93, 36447), (95, 36474), (97, 36501), (101, 36561), (104, 36594), (105, 36597), (109, 36627), (110, 36645), (117, 36786), (122, 36837), (135, 37047), (136, 37053), (140, 37092), (141, 37134), (143, 37146), (145, 37164), (164, 37338), (166, 37347), (167, 37350), (169, 37353), (171, 37365), (175, 37377), (176, 37380), (178, 37395), (195, 37482), (197, 37497), (212, 37641), (213, 37653), (233, 37833), (236, 37851), (245, 37932), (249, 37968), (251, 37989), (255, 38055),

Gene: Gamgam_90 Start: 35248, Stop: 37872, Start Num: 6

Candidate Starts for Gamgam_90:

(Start: 6 @35248 has 150 MA's), (13, 35317), (Start: 14 @35323 has 2 MA's), (19, 35341), (24, 35377), (42, 35485), (45, 35497), (56, 35662), (57, 35668), (67, 35863), (70, 35884), (72, 35905), (73, 35914), (79, 35971), (81, 36013), (83, 36067), (84, 36112), (91, 36181), (93, 36217), (95, 36244), (97, 36271), (101, 36331), (104, 36364), (105, 36367), (109, 36397), (110, 36415), (117, 36556), (122, 36607), (135, 36817), (136, 36823), (140, 36862), (141, 36904), (143, 36916), (145, 36934), (164, 37108), (166, 37117), (167, 37120), (169, 37123), (171, 37135), (175, 37147), (176, 37150), (178, 37165), (195, 37252), (197, 37267), (212, 37411), (213, 37423), (233, 37603), (236, 37621), (245, 37702), (249, 37738), (251, 37759), (255, 37825),

Gene: Ghost_89 Start: 35248, Stop: 37872, Start Num: 6

Candidate Starts for Ghost_89:

(Start: 6 @35248 has 150 MA's), (13, 35317), (Start: 14 @35323 has 2 MA's), (19, 35341), (24, 35377), (42, 35485), (45, 35497), (56, 35662), (57, 35668), (67, 35863), (70, 35884), (72, 35905), (73, 35914), (79, 35971), (81, 36013), (83, 36067), (84, 36112), (91, 36181), (93, 36217), (95, 36244), (97, 36271), (101, 36331), (104, 36364), (105, 36367), (109, 36397), (110, 36415), (117, 36556), (122, 36607), (135, 36817), (136, 36823), (140, 36862), (141, 36904), (143, 36916), (145, 36934), (164, 37108), (166, 37117), (167, 37120), (169, 37123), (171, 37135), (175, 37147), (176, 37150), (178, 37165), (195, 37252), (197, 37267), (212, 37411), (213, 37423), (233, 37603), (236, 37621), (245, 37702), (249, 37738), (251, 37759), (255, 37825),

Gene: Grasshills_97 Start: 38300, Stop: 40924, Start Num: 6

Candidate Starts for Grasshills_97:

(Start: 6 @38300 has 150 MA's), (13, 38369), (Start: 14 @38375 has 2 MA's), (19, 38393), (24, 38429), (42, 38537), (45, 38549), (57, 38720), (67, 38915), (70, 38936), (72, 38957), (73, 38966), (79, 39023), (81, 39065), (83, 39119), (84, 39164), (91, 39233), (93, 39269), (95, 39296), (97, 39323), (101, 39383), (104, 39416), (105, 39419), (109, 39449), (110, 39467), (117, 39608), (122, 39659), (135, 39869), (136, 39875), (137, 39881), (140, 39914), (141, 39956), (143, 39968), (145, 39986), (164, 40160), (166, 40169), (167, 40172), (169, 40175), (171, 40187), (175, 40199), (176, 40202), (178, 40217), (195, 40304), (197, 40319), (212, 40463), (213, 40475), (233, 40655), (236, 40673), (245, 40754), (249, 40790), (251, 40811), (255, 40877),

Gene: Greely_91 Start: 37183, Stop: 39693, Start Num: 14

Candidate Starts for Greely_91:

(Start: 14 @37183 has 2 MA's), (17, 37189), (22, 37228), (25, 37246), (32, 37291), (34, 37312), (37, 37330), (39, 37339), (42, 37360), (54, 37498), (57, 37543), (59, 37591), (67, 37738), (70, 37759), (72, 37780), (73, 37789), (74, 37801), (75, 37804), (77, 37828), (84, 37987), (91, 38056), (93, 38092), (105, 38242), (109, 38272), (110, 38290), (115, 38419), (116, 38428), (117, 38431), (118, 38434), (124, 38530), (125, 38536), (130, 38599), (132, 38623), (135, 38692), (136, 38698), (137, 38704), (139, 38719), (140, 38737), (143, 38791), (145, 38809), (157, 38938), (162, 38971), (164, 38983), (167, 38995), (175, 39022), (178, 39040), (196, 39145), (232, 39448), (239, 39490), (257, 39667),

Gene: Grungle_77 Start: 32630, Stop: 35254, Start Num: 6

Candidate Starts for Grungle_77:

(Start: 6 @32630 has 150 MA's), (13, 32699), (Start: 14 @32705 has 2 MA's), (19, 32723), (24, 32759), (42, 32867), (45, 32879), (56, 33044), (57, 33050), (67, 33245), (70, 33266), (72, 33287), (73, 33296), (79, 33353), (81, 33395), (83, 33449), (84, 33494), (91, 33563), (93, 33599), (95, 33626), (97, 33653), (101, 33713), (104, 33746), (105, 33749), (109, 33779), (110, 33797), (117, 33938), (122, 33989), (135, 34199), (136, 34205), (140, 34244), (141, 34286), (143, 34298), (145, 34316), (164, 34490), (166, 34499), (167, 34502), (169, 34505), (171, 34517), (175, 34529), (176, 34532), (178, 34547), (195, 34634), (197, 34649), (212, 34793), (213, 34805), (233, 34985), (236, 35003), (245, 35084), (249, 35120), (251, 35141), (255, 35207),

Gene: Guwapp_89 Start: 35343, Stop: 37967, Start Num: 6

Candidate Starts for Guwapp_89:

(Start: 6 @35343 has 150 MA's), (13, 35412), (Start: 14 @35418 has 2 MA's), (19, 35436), (24, 35472), (42, 35580), (45, 35592), (56, 35757), (57, 35763), (67, 35958), (70, 35979), (72, 36000), (73, 36009), (79, 36066), (81, 36108), (83, 36162), (84, 36207), (91, 36276), (93, 36312), (95, 36339), (97, 36366), (101, 36426), (104, 36459), (105, 36462), (109, 36492), (110, 36510), (117, 36651), (122, 36702), (135, 36912), (136, 36918), (140, 36957), (141, 36999), (143, 37011), (145, 37029), (164, 37203), (166, 37212), (167, 37215), (169, 37218), (171, 37230), (175, 37242), (176, 37245), (178, 37260), (195, 37347), (197, 37362), (212, 37506), (213, 37518), (233, 37698), (236, 37716), (245, 37797), (249, 37833), (251, 37854), (255, 37920),

Gene: Halldule_83 Start: 33660, Stop: 36284, Start Num: 6

Candidate Starts for Halldule_83:

(Start: 6 @33660 has 150 MA's), (13, 33729), (Start: 14 @33735 has 2 MA's), (19, 33753), (24, 33789), (42, 33897), (45, 33909), (56, 34074), (57, 34080), (67, 34275), (70, 34296), (72, 34317), (73, 34326), (79, 34383), (81, 34425), (83, 34479), (84, 34524), (91, 34593), (93, 34629), (95, 34656), (97, 34683), (101, 34743), (104, 34776), (105, 34779), (109, 34809), (110, 34827), (117, 34968), (122, 35019), (135, 35229), (136, 35235), (140, 35274), (141, 35316), (143, 35328), (145, 35346), (164, 35520), (166, 35529), (167, 35532), (169, 35535), (171, 35547), (175, 35559), (176, 35562), (178, 35577), (195, 35664), (197, 35679), (212, 35823), (213, 35835), (233, 36015), (236, 36033), (245, 36114), (249, 36150), (251, 36171), (255, 36237),

Gene: HyRo_82 Start: 34439, Stop: 37042, Start Num: 6

Candidate Starts for HyRo_82:

(Start: 6 @34439 has 150 MA's), (13, 34508), (Start: 14 @34514 has 2 MA's), (19, 34532), (24, 34568), (42, 34676), (45, 34688), (56, 34853), (57, 34859), (67, 35054), (70, 35075), (72, 35096), (73, 35105), (79, 35162), (81, 35204), (83, 35258), (84, 35303), (91, 35372), (93, 35408), (95, 35435), (97, 35462), (101, 35522), (104, 35555), (105, 35558), (108, 35579), (110, 35606), (113, 35678), (117, 35747), (122, 35798), (135, 36008), (136, 36014), (137, 36020), (140, 36053), (141, 36095), (143, 36107), (145, 36125), (164, 36299), (166, 36308), (167, 36311), (169, 36314), (171, 36326), (175, 36338), (176, 36341), (178, 36356), (195, 36422), (197, 36437), (212, 36581), (213, 36593), (233, 36773), (236, 36791), (245, 36872), (249, 36908), (251, 36929), (255, 36995),

Gene: I3_96 Start: 36210, Stop: 38834, Start Num: 6

Candidate Starts for I3_96:

(Start: 6 @36210 has 150 MA's), (13, 36279), (Start: 14 @36285 has 2 MA's), (19, 36303), (24, 36339), (42, 36447), (45, 36459), (56, 36624), (57, 36630), (67, 36825), (70, 36846), (72, 36867), (73, 36876), (79, 36933), (81, 36975), (83, 37029), (84, 37074), (91, 37143), (93, 37179), (95, 37206), (97, 37233), (101, 37293), (104, 37326), (105, 37329), (109, 37359), (110, 37377), (117, 37518), (122, 37569), (135, 37779), (136, 37785), (137, 37791), (140, 37824), (141, 37866), (143, 37878), (145, 37896), (164, 38070), (166, 38079), (167, 38082), (169, 38085), (171, 38097), (175, 38109), (176, 38112), (178, 38127), (195, 38214), (197, 38229), (212, 38373), (213, 38385), (233, 38565), (236, 38583), (245, 38664), (249, 38700), (251, 38721), (255, 38787),

Gene: IkeLoa_84 Start: 34608, Stop: 37232, Start Num: 6

Candidate Starts for IkeLoa_84:

(Start: 6 @34608 has 150 MA's), (13, 34677), (Start: 14 @34683 has 2 MA's), (19, 34701), (24, 34737), (42, 34845), (45, 34857), (56, 35022), (57, 35028), (67, 35223), (70, 35244), (72, 35265), (73, 35274), (79, 35331), (81, 35373), (83, 35427), (84, 35472), (91, 35541), (93, 35577), (95, 35604), (97, 35631), (101, 35691), (104, 35724), (105, 35727), (109, 35757), (110, 35775), (117, 35916), (122, 35967), (135, 36177), (136, 36183), (137, 36189), (140, 36222), (141, 36264), (143, 36276), (145, 36294), (164, 36468), (166, 36477), (167, 36480), (169, 36483), (171, 36495), (175, 36507), (176, 36510), (178, 36525), (195, 36612), (197, 36627), (212, 36771), (213, 36783), (233, 36963), (236, 36981), (245, 37062), (249, 37098), (251, 37119), (255, 37185),

Gene: InigoMontoya_91 Start: 35209, Stop: 37833, Start Num: 6

Candidate Starts for InigoMontoya_91:

(Start: 6 @35209 has 150 MA's), (13, 35278), (Start: 14 @35284 has 2 MA's), (19, 35302), (24, 35338), (42, 35446), (45, 35458), (56, 35623), (57, 35629), (67, 35824), (70, 35845), (72, 35866), (73, 35875), (79, 35932), (81, 35974), (83, 36028), (84, 36073), (91, 36142), (93, 36178), (95, 36205), (97, 36232), (101, 36292), (104, 36325), (105, 36328), (109, 36358), (110, 36376), (117, 36517), (122, 36568), (135, 36778), (136, 36784), (140, 36823), (141, 36865), (143, 36877), (145, 36895), (164, 37069), (166, 37078), (167, 37081), (169, 37084), (171, 37096), (175, 37108), (176, 37111), (178, 37126), (195, 37213), (197, 37228), (212, 37372), (213, 37384), (233, 37564), (236, 37582), (245, 37663), (249, 37699), (251, 37720), (255, 37786),

Gene: InterFolia_99 Start: 38630, Stop: 41254, Start Num: 6

Candidate Starts for InterFolia_99:

(Start: 6 @38630 has 150 MA's), (13, 38699), (Start: 14 @38705 has 2 MA's), (19, 38723), (24, 38759), (42, 38867), (45, 38879), (56, 39044), (57, 39050), (67, 39245), (70, 39266), (72, 39287), (73, 39296), (79, 39353), (81, 39395), (83, 39449), (84, 39494), (91, 39563), (93, 39599), (95, 39626), (97, 39653), (101, 39713), (104, 39746), (105, 39749), (109, 39779), (110, 39797), (117, 39938), (122, 39989), (135, 40199), (136, 40205), (137, 40211), (140, 40244), (141, 40286), (143, 40298), (145, 40316), (164, 40490), (166, 40499), (167, 40502), (169, 40505), (171, 40517), (175, 40529), (176, 40532), (178, 40547), (195, 40634), (197, 40649), (212, 40793), (213, 40805), (233, 40985), (236, 41003), (245, 41084), (249, 41120), (251, 41141), (255, 41207),

Gene: Iota_84 Start: 34989, Stop: 37613, Start Num: 6

Candidate Starts for Iota_84:

(Start: 6 @34989 has 150 MA's), (13, 35058), (Start: 14 @35064 has 2 MA's), (19, 35082), (24, 35118), (42, 35226), (45, 35238), (56, 35403), (57, 35409), (67, 35604), (70, 35625), (72, 35646), (73, 35655), (79, 35712), (81, 35754), (83, 35808), (84, 35853), (91, 35922), (93, 35958), (95, 35985), (97, 36012), (101, 36072), (104, 36105), (105, 36108), (109, 36138), (110, 36156), (117, 36297), (122, 36348), (135, 36558), (136, 36564), (140, 36603), (141, 36645), (143, 36657), (145, 36675), (164, 36849), (166, 36858), (167, 36861), (169, 36864), (171, 36876), (175, 36888), (176, 36891), (178, 36906), (195, 36993), (197, 37008), (212, 37152), (213, 37164), (233, 37344), (236, 37362), (245, 37443), (249, 37479), (251, 37500), (255, 37566),

Gene: Issimir_89 Start: 36186, Stop: 38810, Start Num: 6

Candidate Starts for Issimir_89:

(Start: 6 @36186 has 150 MA's), (13, 36255), (Start: 14 @36261 has 2 MA's), (19, 36279), (24, 36315), (42, 36423), (45, 36435), (56, 36600), (57, 36606), (67, 36801), (70, 36822), (72, 36843), (73, 36852), (79, 36909), (81, 36951), (83, 37005), (84, 37050), (91, 37119), (93, 37155), (95, 37182), (97, 37209), (101, 37269), (104, 37302), (105, 37305), (109, 37335), (110, 37353), (117, 37494), (122, 37545), (135, 37755), (136, 37761), (140, 37800), (141, 37842), (143, 37854), (145, 37872), (164, 38046), (166, 38055), (167, 38058), (169, 38061), (171, 38073), (175, 38085), (176, 38088), (178, 38103), (195, 38190), (197, 38205), (212, 38349), (213, 38361), (233, 38541), (236, 38559), (245, 38640), (249, 38676), (251, 38697), (255, 38763),

Gene: Izajani_90 Start: 36259, Stop: 38883, Start Num: 6

Candidate Starts for Izajani_90:

(Start: 6 @36259 has 150 MA's), (13, 36328), (Start: 14 @36334 has 2 MA's), (19, 36352), (24, 36388), (42, 36496), (45, 36508), (56, 36673), (57, 36679), (67, 36874), (70, 36895), (72, 36916), (73, 36925), (79, 36982), (81, 37024), (83, 37078), (84, 37123), (91, 37192), (93, 37228), (95, 37255), (97, 37282), (101, 37342), (104, 37375), (105, 37378), (109, 37408), (110, 37426), (117, 37567), (122, 37618), (135, 37828), (136, 37834), (140, 37873), (141, 37915), (143, 37927), (145, 37945), (164, 38119), (166, 38128), (167, 38131), (169, 38134), (171, 38146), (175, 38158), (176, 38161), (178,

38176), (195, 38263), (197, 38278), (212, 38422), (213, 38434), (233, 38614), (236, 38632), (245, 38713), (249, 38749), (251, 38770), (255, 38836),

Gene: Janiyra_92 Start: 35540, Stop: 38143, Start Num: 6

Candidate Starts for Janiyra_92:

(Start: 6 @35540 has 150 MA's), (13, 35609), (Start: 14 @35615 has 2 MA's), (19, 35633), (24, 35669), (42, 35777), (45, 35789), (56, 35954), (57, 35960), (67, 36155), (70, 36176), (72, 36197), (73, 36206), (79, 36263), (81, 36305), (83, 36359), (84, 36404), (91, 36473), (93, 36509), (95, 36536), (97, 36563), (101, 36623), (104, 36656), (105, 36659), (108, 36680), (110, 36707), (113, 36779), (117, 36848), (122, 36899), (135, 37109), (136, 37115), (137, 37121), (140, 37154), (141, 37196), (143, 37208), (145, 37226), (164, 37400), (166, 37409), (167, 37412), (169, 37415), (171, 37427), (175, 37439), (176, 37442), (178, 37457), (195, 37523), (197, 37538), (212, 37682), (213, 37694), (233, 37874), (236, 37892), (245, 37973), (249, 38009), (251, 38030), (255, 38096),

Gene: JeanGrey_27 Start: 14251, Stop: 16443, Start Num: 16

Candidate Starts for JeanGrey_27:

(16, 14251), (36, 14386), (43, 14410), (44, 14413), (51, 14503), (55, 14554), (57, 14590), (59, 14638), (62, 14671), (63, 14680), (65, 14740), (68, 14782), (84, 15013), (86, 15025), (88, 15058), (91, 15082), (92, 15085), (101, 15235), (104, 15268), (116, 15457), (117, 15460), (121, 15505), (126, 15574), (134, 15703), (135, 15721), (145, 15838), (146, 15841), (162, 15985), (168, 16000), (199, 16126), (208, 16207), (209, 16210), (231, 16408),

Gene: Jessibeth14_89 Start: 36028, Stop: 38652, Start Num: 6

Candidate Starts for Jessibeth14_89:

(Start: 6 @36028 has 150 MA's), (13, 36097), (Start: 14 @36103 has 2 MA's), (19, 36121), (24, 36157), (42, 36265), (45, 36277), (56, 36442), (57, 36448), (67, 36643), (70, 36664), (72, 36685), (73, 36694), (79, 36751), (81, 36793), (83, 36847), (84, 36892), (91, 36961), (93, 36997), (95, 37024), (97, 37051), (101, 37111), (104, 37144), (105, 37147), (109, 37177), (110, 37195), (117, 37336), (122, 37387), (135, 37597), (136, 37603), (140, 37642), (141, 37684), (143, 37696), (145, 37714), (164, 37888), (166, 37897), (167, 37900), (169, 37903), (171, 37915), (175, 37927), (176, 37930), (178, 37945), (195, 38032), (197, 38047), (212, 38191), (213, 38203), (233, 38383), (236, 38401), (245, 38482), (249, 38518), (251, 38539), (255, 38605),

Gene: JigglyPuff_96 Start: 37803, Stop: 40427, Start Num: 6

Candidate Starts for JigglyPuff_96:

(3, 37755), (Start: 6 @37803 has 150 MA's), (13, 37872), (Start: 14 @37878 has 2 MA's), (19, 37896), (24, 37932), (42, 38040), (45, 38052), (56, 38217), (57, 38223), (67, 38418), (70, 38439), (72, 38460), (73, 38469), (79, 38526), (81, 38568), (83, 38622), (84, 38667), (91, 38736), (93, 38772), (95, 38799), (97, 38826), (101, 38886), (104, 38919), (105, 38922), (109, 38952), (110, 38970), (117, 39111), (122, 39162), (135, 39372), (136, 39378), (137, 39384), (140, 39417), (141, 39459), (143, 39471), (145, 39489), (164, 39663), (166, 39672), (167, 39675), (169, 39678), (171, 39690), (175, 39702), (176, 39705), (178, 39720), (195, 39807), (197, 39822), (212, 39966), (213, 39978), (233, 40158), (236, 40176), (245, 40257), (249, 40293), (251, 40314), (255, 40380),

Gene: JulietS_83 Start: 33511, Stop: 36135, Start Num: 6

Candidate Starts for JulietS_83:

(Start: 6 @33511 has 150 MA's), (13, 33580), (Start: 14 @33586 has 2 MA's), (19, 33604), (24, 33640), (42, 33748), (45, 33760), (56, 33925), (57, 33931), (67, 34126), (70, 34147), (72, 34168), (73, 34177), (79, 34234), (81, 34276), (83, 34330), (84, 34375), (91, 34444), (93, 34480), (95, 34507), (97, 34534), (101, 34594), (104, 34627), (105, 34630), (109, 34660), (110, 34678), (117, 34819), (122, 34870), (135, 35080), (136, 35086), (140, 35125), (141, 35167), (143, 35179), (145, 35197), (164, 35371), (166, 35380), (167, 35383), (169, 35386), (171, 35398), (175, 35410), (176, 35413), (178, 35428), (195, 35515), (197, 35530), (212, 35674), (213, 35686), (233, 35866), (236, 35884), (245,

35965), (249, 36001), (251, 36022), (255, 36088),

Gene: JustHall_86 Start: 35178, Stop: 37781, Start Num: 6

Candidate Starts for JustHall_86:

(Start: 6 @35178 has 150 MA's), (13, 35247), (Start: 14 @35253 has 2 MA's), (19, 35271), (24, 35307), (42, 35415), (45, 35427), (56, 35592), (57, 35598), (67, 35793), (70, 35814), (72, 35835), (73, 35844), (79, 35901), (81, 35943), (83, 35997), (84, 36042), (91, 36111), (93, 36147), (95, 36174), (97, 36201), (101, 36261), (104, 36294), (105, 36297), (108, 36318), (110, 36345), (113, 36417), (117, 36486), (122, 36537), (135, 36747), (136, 36753), (137, 36759), (140, 36792), (141, 36834), (143, 36846), (145, 36864), (164, 37038), (166, 37047), (167, 37050), (169, 37053), (171, 37065), (175, 37077), (176, 37080), (178, 37095), (195, 37161), (197, 37176), (212, 37320), (213, 37332), (233, 37512), (236, 37530), (245, 37611), (249, 37647), (251, 37668), (255, 37734),

Gene: Kamryn_90 Start: 36767, Stop: 39391, Start Num: 6

Candidate Starts for Kamryn_90:

(Start: 6 @36767 has 150 MA's), (13, 36836), (Start: 14 @36842 has 2 MA's), (19, 36860), (24, 36896), (42, 37004), (45, 37016), (56, 37181), (57, 37187), (67, 37382), (70, 37403), (72, 37424), (73, 37433), (79, 37490), (81, 37532), (83, 37586), (84, 37631), (91, 37700), (93, 37736), (95, 37763), (97, 37790), (101, 37850), (104, 37883), (105, 37886), (109, 37916), (110, 37934), (117, 38075), (122, 38126), (135, 38336), (136, 38342), (140, 38381), (141, 38423), (143, 38435), (145, 38453), (164, 38627), (166, 38636), (167, 38639), (169, 38642), (171, 38654), (175, 38666), (176, 38669), (178, 38684), (195, 38771), (197, 38786), (212, 38930), (213, 38942), (233, 39122), (236, 39140), (245, 39221), (249, 39257), (251, 39278), (255, 39344),

Gene: Kboogie_93 Start: 34822, Stop: 37425, Start Num: 6

Candidate Starts for Kboogie_93:

(Start: 6 @34822 has 150 MA's), (13, 34891), (Start: 14 @34897 has 2 MA's), (19, 34915), (24, 34951), (42, 35059), (45, 35071), (56, 35236), (57, 35242), (67, 35437), (70, 35458), (72, 35479), (73, 35488), (79, 35545), (81, 35587), (83, 35641), (84, 35686), (91, 35755), (93, 35791), (95, 35818), (97, 35845), (101, 35905), (104, 35938), (105, 35941), (108, 35962), (110, 35989), (113, 36061), (117, 36130), (122, 36181), (135, 36391), (136, 36397), (137, 36403), (140, 36436), (141, 36478), (143, 36490), (145, 36508), (164, 36682), (166, 36691), (167, 36694), (169, 36697), (171, 36709), (175, 36721), (176, 36724), (178, 36739), (195, 36805), (197, 36820), (212, 36964), (213, 36976), (233, 37156), (236, 37174), (245, 37255), (249, 37291), (251, 37312), (255, 37378),

Gene: Khaleesi_89 Start: 35990, Stop: 38614, Start Num: 6

Candidate Starts for Khaleesi_89:

(Start: 6 @35990 has 150 MA's), (13, 36059), (Start: 14 @36065 has 2 MA's), (19, 36083), (24, 36119), (42, 36227), (45, 36239), (56, 36404), (57, 36410), (67, 36605), (70, 36626), (72, 36647), (73, 36656), (79, 36713), (81, 36755), (83, 36809), (84, 36854), (91, 36923), (93, 36959), (95, 36986), (97, 37013), (101, 37073), (104, 37106), (105, 37109), (109, 37139), (110, 37157), (117, 37298), (122, 37349), (135, 37559), (136, 37565), (140, 37604), (141, 37646), (143, 37658), (145, 37676), (164, 37850), (166, 37859), (167, 37862), (169, 37865), (171, 37877), (175, 37889), (176, 37892), (178, 37907), (195, 37994), (197, 38009), (212, 38153), (213, 38165), (233, 38345), (236, 38363), (245, 38444), (249, 38480), (251, 38501), (255, 38567),

Gene: Koguma_86 Start: 33731, Stop: 36355, Start Num: 6

Candidate Starts for Koguma_86:

(Start: 6 @33731 has 150 MA's), (13, 33800), (Start: 14 @33806 has 2 MA's), (19, 33824), (24, 33860), (42, 33968), (45, 33980), (56, 34145), (57, 34151), (67, 34346), (70, 34367), (72, 34388), (73, 34397), (79, 34454), (81, 34496), (83, 34550), (84, 34595), (91, 34664), (93, 34700), (95, 34727), (97, 34754), (101, 34814), (104, 34847), (105, 34850), (109, 34880), (110, 34898), (117, 35039), (122, 35090), (135, 35300), (136, 35306), (140, 35345), (141, 35387), (143, 35399), (145, 35417), (164,

35591), (166, 35600), (167, 35603), (169, 35606), (171, 35618), (175, 35630), (176, 35633), (178, 35648), (195, 35735), (197, 35750), (212, 35894), (213, 35906), (233, 36086), (236, 36104), (245, 36185), (249, 36221), (251, 36242), (255, 36308),

Gene: LRRHood_84 Start: 35550, Stop: 38174, Start Num: 6

Candidate Starts for LRRHood_84:

(Start: 6 @35550 has 150 MA's), (13, 35619), (Start: 14 @35625 has 2 MA's), (19, 35643), (24, 35679), (42, 35787), (45, 35799), (56, 35964), (57, 35970), (67, 36165), (70, 36186), (72, 36207), (73, 36216), (79, 36273), (81, 36315), (83, 36369), (84, 36414), (91, 36483), (93, 36519), (95, 36546), (97, 36573), (101, 36633), (104, 36666), (105, 36669), (109, 36699), (110, 36717), (117, 36858), (122, 36909), (135, 37119), (136, 37125), (140, 37164), (141, 37206), (143, 37218), (145, 37236), (164, 37410), (166, 37419), (167, 37422), (169, 37425), (171, 37437), (175, 37449), (176, 37452), (178, 37467), (195, 37554), (197, 37569), (212, 37713), (213, 37725), (233, 37905), (236, 37923), (245, 38004), (249, 38040), (251, 38061), (255, 38127),

Gene: Latch_90 Start: 35248, Stop: 37872, Start Num: 6

Candidate Starts for Latch_90:

(Start: 6 @35248 has 150 MA's), (13, 35317), (Start: 14 @35323 has 2 MA's), (19, 35341), (24, 35377), (42, 35485), (45, 35497), (56, 35662), (57, 35668), (67, 35863), (70, 35884), (72, 35905), (73, 35914), (79, 35971), (81, 36013), (83, 36067), (84, 36112), (91, 36181), (93, 36217), (95, 36244), (97, 36271), (101, 36331), (104, 36364), (105, 36367), (109, 36397), (110, 36415), (117, 36556), (122, 36607), (135, 36817), (136, 36823), (140, 36862), (141, 36904), (143, 36916), (145, 36934), (164, 37108), (166, 37117), (167, 37120), (169, 37123), (171, 37135), (175, 37147), (176, 37150), (178, 37165), (195, 37252), (197, 37267), (212, 37411), (213, 37423), (233, 37603), (236, 37621), (245, 37702), (249, 37738), (251, 37759), (255, 37825),

Gene: Lee7_88 Start: 35853, Stop: 38477, Start Num: 6

Candidate Starts for Lee7_88:

(Start: 6 @35853 has 150 MA's), (13, 35922), (Start: 14 @35928 has 2 MA's), (19, 35946), (24, 35982), (42, 36090), (45, 36102), (56, 36267), (57, 36273), (67, 36468), (70, 36489), (72, 36510), (73, 36519), (79, 36576), (81, 36618), (83, 36672), (84, 36717), (91, 36786), (93, 36822), (95, 36849), (97, 36876), (101, 36936), (104, 36969), (105, 36972), (109, 37002), (110, 37020), (117, 37161), (122, 37212), (135, 37422), (136, 37428), (140, 37467), (141, 37509), (143, 37521), (145, 37539), (164, 37713), (166, 37722), (167, 37725), (169, 37728), (171, 37740), (175, 37752), (176, 37755), (178, 37770), (195, 37857), (197, 37872), (212, 38016), (213, 38028), (233, 38208), (236, 38226), (245, 38307), (249, 38343), (251, 38364), (255, 38430),

Gene: LinStu_90 Start: 36614, Stop: 39238, Start Num: 6

Candidate Starts for LinStu_90:

(Start: 6 @36614 has 150 MA's), (13, 36683), (Start: 14 @36689 has 2 MA's), (19, 36707), (24, 36743), (42, 36851), (45, 36863), (56, 37028), (57, 37034), (67, 37229), (70, 37250), (72, 37271), (73, 37280), (79, 37337), (81, 37379), (83, 37433), (84, 37478), (91, 37547), (93, 37583), (95, 37610), (97, 37637), (101, 37697), (104, 37730), (105, 37733), (109, 37763), (110, 37781), (117, 37922), (122, 37973), (135, 38183), (136, 38189), (140, 38228), (141, 38270), (143, 38282), (145, 38300), (164, 38474), (166, 38483), (167, 38486), (169, 38489), (171, 38501), (175, 38513), (176, 38516), (178, 38531), (195, 38618), (197, 38633), (212, 38777), (213, 38789), (233, 38969), (236, 38987), (245, 39068), (249, 39104), (251, 39125), (255, 39191),

Gene: Littleton_90 Start: 35203, Stop: 37827, Start Num: 6

Candidate Starts for Littleton_90:

(Start: 6 @35203 has 150 MA's), (13, 35272), (Start: 14 @35278 has 2 MA's), (19, 35296), (24, 35332), (42, 35440), (45, 35452), (56, 35617), (57, 35623), (67, 35818), (70, 35839), (72, 35860), (73, 35869), (79, 35926), (81, 35968), (83, 36022), (84, 36067), (91, 36136), (93, 36172), (95, 36199), (97,

36226), (101, 36286), (102, 36298), (104, 36319), (105, 36322), (109, 36352), (110, 36370), (117, 36511), (122, 36562), (135, 36772), (136, 36778), (140, 36817), (141, 36859), (143, 36871), (145, 36889), (164, 37063), (166, 37072), (167, 37075), (169, 37078), (171, 37090), (175, 37102), (176, 37105), (178, 37120), (195, 37207), (197, 37222), (212, 37366), (213, 37378), (233, 37558), (236, 37576), (245, 37657), (249, 37693), (251, 37714), (255, 37780),

Gene: Loanshark_90 Start: 36243, Stop: 38867, Start Num: 6

Candidate Starts for Loanshark_90:

(Start: 6 @36243 has 150 MA's), (13, 36312), (Start: 14 @36318 has 2 MA's), (19, 36336), (24, 36372), (42, 36480), (45, 36492), (56, 36657), (57, 36663), (67, 36858), (70, 36879), (72, 36900), (73, 36909), (79, 36966), (81, 37008), (83, 37062), (84, 37107), (91, 37176), (93, 37212), (95, 37239), (97, 37266), (101, 37326), (104, 37359), (105, 37362), (109, 37392), (110, 37410), (117, 37551), (122, 37602), (135, 37812), (136, 37818), (140, 37857), (141, 37899), (143, 37911), (145, 37929), (164, 38103), (166, 38112), (167, 38115), (169, 38118), (171, 38130), (175, 38142), (176, 38145), (178, 38160), (195, 38247), (197, 38262), (212, 38406), (213, 38418), (233, 38598), (236, 38616), (245, 38697), (249, 38733), (251, 38754), (255, 38820),

Gene: LolaVinca_92 Start: 37349, Stop: 39973, Start Num: 6

Candidate Starts for LolaVinca_92:

(Start: 6 @37349 has 150 MA's), (13, 37418), (Start: 14 @37424 has 2 MA's), (19, 37442), (24, 37478), (42, 37586), (45, 37598), (56, 37763), (57, 37769), (67, 37964), (70, 37985), (72, 38006), (73, 38015), (79, 38072), (81, 38114), (83, 38168), (84, 38213), (91, 38282), (93, 38318), (95, 38345), (97, 38372), (101, 38432), (102, 38444), (104, 38465), (105, 38468), (109, 38498), (110, 38516), (117, 38657), (122, 38708), (135, 38918), (136, 38924), (140, 38963), (141, 39005), (143, 39017), (145, 39035), (164, 39209), (166, 39218), (167, 39221), (169, 39224), (171, 39236), (175, 39248), (176, 39251), (178, 39266), (195, 39353), (197, 39368), (212, 39512), (213, 39524), (233, 39704), (236, 39722), (245, 39803), (249, 39839), (251, 39860), (255, 39926),

Gene: LordLeafolot_95 Start: 38340, Stop: 40964, Start Num: 6

Candidate Starts for LordLeafolot_95:

(Start: 6 @38340 has 150 MA's), (13, 38409), (Start: 14 @38415 has 2 MA's), (19, 38433), (24, 38469), (42, 38577), (45, 38589), (56, 38754), (57, 38760), (67, 38955), (70, 38976), (72, 38997), (73, 39006), (79, 39063), (81, 39105), (83, 39159), (84, 39204), (91, 39273), (93, 39309), (95, 39336), (97, 39363), (101, 39423), (104, 39456), (105, 39459), (109, 39489), (110, 39507), (117, 39648), (122, 39699), (135, 39909), (136, 39915), (137, 39921), (140, 39954), (141, 39996), (143, 40008), (145, 40026), (164, 40200), (166, 40209), (167, 40212), (169, 40215), (171, 40227), (175, 40239), (176, 40242), (178, 40257), (195, 40344), (197, 40359), (212, 40503), (213, 40515), (233, 40695), (236, 40713), (245, 40794), (249, 40830), (251, 40851), (255, 40917),

Gene: Lukilu_81 Start: 35083, Stop: 37707, Start Num: 6

Candidate Starts for Lukilu_81:

(Start: 6 @35083 has 150 MA's), (13, 35152), (Start: 14 @35158 has 2 MA's), (19, 35176), (24, 35212), (42, 35320), (45, 35332), (56, 35497), (57, 35503), (67, 35698), (70, 35719), (72, 35740), (73, 35749), (79, 35806), (81, 35848), (83, 35902), (84, 35947), (91, 36016), (93, 36052), (95, 36079), (97, 36106), (101, 36166), (104, 36199), (105, 36202), (109, 36232), (110, 36250), (117, 36391), (122, 36442), (135, 36652), (136, 36658), (140, 36697), (141, 36739), (143, 36751), (145, 36769), (164, 36943), (166, 36952), (167, 36955), (169, 36958), (171, 36970), (175, 36982), (176, 36985), (178, 37000), (195, 37087), (197, 37102), (212, 37246), (213, 37258), (233, 37438), (236, 37456), (245, 37537), (249, 37573), (251, 37594), (255, 37660),

Gene: Maby2021_90 Start: 35924, Stop: 38548, Start Num: 6

Candidate Starts for Maby2021_90:

(Start: 6 @35924 has 150 MA's), (13, 35993), (Start: 14 @35999 has 2 MA's), (19, 36017), (24, 36053), (42, 36161), (45, 36173), (56, 36338), (57, 36344), (67, 36539), (70, 36560), (72, 36581), (73, 36590), (79, 36647), (81, 36689), (83, 36743), (84, 36788), (91, 36857), (93, 36893), (95, 36920), (97, 36947), (101, 37007), (104, 37040), (105, 37043), (108, 37064), (110, 37091), (113, 37163), (117, 37232), (122, 37283), (135, 37493), (136, 37499), (140, 37538), (141, 37580), (143, 37592), (145, 37610), (164, 37784), (166, 37793), (167, 37796), (169, 37799), (171, 37811), (175, 37823), (176, 37826), (178, 37841), (195, 37928), (197, 37943), (212, 38087), (213, 38099), (233, 38279), (236, 38297), (245, 38378), (249, 38414), (251, 38435), (255, 38501),

Gene: Mangeria_90 Start: 36205, Stop: 38829, Start Num: 6

Candidate Starts for Mangeria_90:

(Start: 6 @36205 has 150 MA's), (13, 36274), (Start: 14 @36280 has 2 MA's), (19, 36298), (24, 36334), (42, 36442), (45, 36454), (56, 36619), (57, 36625), (67, 36820), (70, 36841), (72, 36862), (73, 36871), (79, 36928), (81, 36970), (83, 37024), (84, 37069), (91, 37138), (93, 37174), (95, 37201), (97, 37228), (101, 37288), (104, 37321), (105, 37324), (109, 37354), (110, 37372), (117, 37513), (122, 37564), (135, 37774), (136, 37780), (140, 37819), (141, 37861), (143, 37873), (145, 37891), (164, 38065), (167, 38077), (169, 38080), (171, 38092), (175, 38104), (176, 38107), (178, 38122), (195, 38209), (197, 38224), (212, 38368), (213, 38380), (233, 38560), (236, 38578), (245, 38659), (249, 38695), (251, 38716), (255, 38782),

Gene: McGee_91 Start: 34432, Stop: 37056, Start Num: 6

Candidate Starts for McGee_91:

(Start: 6 @34432 has 150 MA's), (13, 34501), (Start: 14 @34507 has 2 MA's), (19, 34525), (24, 34561), (42, 34669), (45, 34681), (56, 34846), (57, 34852), (67, 35047), (70, 35068), (72, 35089), (73, 35098), (79, 35155), (81, 35197), (83, 35251), (84, 35296), (91, 35365), (93, 35401), (95, 35428), (97, 35455), (101, 35515), (104, 35548), (105, 35551), (109, 35581), (110, 35599), (117, 35740), (122, 35791), (135, 36001), (136, 36007), (140, 36046), (141, 36088), (143, 36100), (145, 36118), (164, 36292), (166, 36301), (167, 36304), (169, 36307), (171, 36319), (175, 36331), (176, 36334), (178, 36349), (195, 36436), (197, 36451), (212, 36595), (213, 36607), (233, 36787), (236, 36805), (245, 36886), (249, 36922), (251, 36943), (255, 37009),

Gene: McWolfish_88 Start: 35671, Stop: 38274, Start Num: 6

Candidate Starts for McWolfish_88:

(Start: 6 @35671 has 150 MA's), (13, 35740), (Start: 14 @35746 has 2 MA's), (19, 35764), (24, 35800), (42, 35908), (45, 35920), (56, 36085), (57, 36091), (67, 36286), (70, 36307), (72, 36328), (73, 36337), (79, 36394), (81, 36436), (83, 36490), (84, 36535), (91, 36604), (93, 36640), (95, 36667), (97, 36694), (101, 36754), (104, 36787), (105, 36790), (108, 36811), (110, 36838), (113, 36910), (117, 36979), (122, 37030), (135, 37240), (136, 37246), (140, 37285), (141, 37327), (143, 37339), (145, 37357), (164, 37531), (166, 37540), (167, 37543), (169, 37546), (171, 37558), (175, 37570), (176, 37573), (178, 37588), (195, 37654), (197, 37669), (212, 37813), (213, 37825), (233, 38005), (236, 38023), (245, 38104), (249, 38140), (251, 38161), (255, 38227),

Gene: Megamind_89 Start: 35909, Stop: 38533, Start Num: 6

Candidate Starts for Megamind_89:

(Start: 6 @35909 has 150 MA's), (13, 35978), (Start: 14 @35984 has 2 MA's), (19, 36002), (24, 36038), (42, 36146), (45, 36158), (56, 36323), (57, 36329), (67, 36524), (70, 36545), (72, 36566), (73, 36575), (79, 36632), (81, 36674), (83, 36728), (84, 36773), (91, 36842), (93, 36878), (95, 36905), (97, 36932), (101, 36992), (104, 37025), (105, 37028), (109, 37058), (110, 37076), (117, 37217), (122, 37268), (135, 37478), (136, 37484), (140, 37523), (141, 37565), (143, 37577), (145, 37595), (164, 37769), (166, 37778), (167, 37781), (169, 37784), (171, 37796), (175, 37808), (176, 37811), (178, 37826), (195, 37913), (197, 37928), (212, 38072), (213, 38084), (233, 38264), (236, 38282), (245, 38363), (249, 38399), (251, 38420), (255, 38486),

Gene: Melpomini_84 Start: 33455, Stop: 36058, Start Num: 6

Candidate Starts for Melpomini_84:

(Start: 6 @33455 has 150 MA's), (13, 33524), (Start: 14 @33530 has 2 MA's), (19, 33548), (24, 33584), (42, 33692), (45, 33704), (56, 33869), (57, 33875), (67, 34070), (70, 34091), (72, 34112), (73, 34121), (79, 34178), (81, 34220), (83, 34274), (84, 34319), (91, 34388), (93, 34424), (95, 34451), (97, 34478), (101, 34538), (104, 34571), (105, 34574), (108, 34595), (110, 34622), (113, 34694), (117, 34763), (122, 34814), (135, 35024), (136, 35030), (137, 35036), (140, 35069), (141, 35111), (143, 35123), (145, 35141), (164, 35315), (166, 35324), (167, 35327), (169, 35330), (171, 35342), (175, 35354), (176, 35357), (178, 35372), (195, 35438), (197, 35453), (212, 35597), (213, 35609), (233, 35789), (236, 35807), (245, 35888), (249, 35924), (251, 35945), (255, 36011),

Gene: MikeLiesIn_91 Start: 36256, Stop: 38880, Start Num: 6

Candidate Starts for MikeLiesIn_91:

(Start: 6 @36256 has 150 MA's), (13, 36325), (Start: 14 @36331 has 2 MA's), (19, 36349), (24, 36385), (42, 36493), (45, 36505), (56, 36670), (57, 36676), (67, 36871), (70, 36892), (72, 36913), (73, 36922), (79, 36979), (81, 37021), (83, 37075), (84, 37120), (91, 37189), (93, 37225), (95, 37252), (97, 37279), (101, 37339), (104, 37372), (105, 37375), (109, 37405), (110, 37423), (117, 37564), (122, 37615), (135, 37825), (136, 37831), (140, 37870), (141, 37912), (143, 37924), (145, 37942), (164, 38116), (166, 38125), (167, 38128), (169, 38131), (171, 38143), (175, 38155), (176, 38158), (178, 38173), (195, 38260), (197, 38275), (212, 38419), (213, 38431), (233, 38611), (236, 38629), (245, 38710), (249, 38746), (251, 38767), (255, 38833),

Gene: Mikro_88 Start: 37167, Stop: 39791, Start Num: 6

Candidate Starts for Mikro_88:

(Start: 6 @37167 has 150 MA's), (13, 37236), (Start: 14 @37242 has 2 MA's), (19, 37260), (24, 37296), (42, 37404), (45, 37416), (56, 37581), (57, 37587), (67, 37782), (70, 37803), (72, 37824), (73, 37833), (79, 37890), (81, 37932), (83, 37986), (84, 38031), (91, 38100), (93, 38136), (95, 38163), (97, 38190), (101, 38250), (104, 38283), (105, 38286), (109, 38316), (110, 38334), (117, 38475), (122, 38526), (135, 38736), (136, 38742), (137, 38748), (140, 38781), (141, 38823), (143, 38835), (145, 38853), (164, 39027), (166, 39036), (167, 39039), (169, 39042), (171, 39054), (175, 39066), (176, 39069), (178, 39084), (195, 39171), (197, 39186), (212, 39330), (213, 39342), (233, 39522), (236, 39540), (245, 39621), (249, 39657), (251, 39678), (255, 39744),

Gene: MoMoMixon_91 Start: 36002, Stop: 38605, Start Num: 6

Candidate Starts for MoMoMixon_91:

(Start: 6 @36002 has 150 MA's), (13, 36071), (Start: 14 @36077 has 2 MA's), (19, 36095), (24, 36131), (42, 36239), (45, 36251), (56, 36416), (57, 36422), (67, 36617), (70, 36638), (72, 36659), (73, 36668), (79, 36725), (81, 36767), (83, 36821), (84, 36866), (91, 36935), (93, 36971), (95, 36998), (97, 37025), (101, 37085), (104, 37118), (105, 37121), (109, 37151), (110, 37169), (117, 37310), (122, 37361), (135, 37571), (136, 37577), (140, 37616), (141, 37658), (143, 37670), (145, 37688), (164, 37862), (166, 37871), (167, 37874), (169, 37877), (171, 37889), (175, 37901), (176, 37904), (178, 37919), (195, 37985), (197, 38000), (212, 38144), (213, 38156), (233, 38336), (236, 38354), (245, 38435), (249, 38471), (251, 38492), (255, 38558),

Gene: Momo_89 Start: 35248, Stop: 37872, Start Num: 6

Candidate Starts for Momo_89:

(Start: 6 @35248 has 150 MA's), (13, 35317), (Start: 14 @35323 has 2 MA's), (19, 35341), (24, 35377), (42, 35485), (45, 35497), (56, 35662), (57, 35668), (67, 35863), (70, 35884), (72, 35905), (73, 35914), (79, 35971), (81, 36013), (83, 36067), (84, 36112), (91, 36181), (93, 36217), (95, 36244), (97, 36271), (101, 36331), (104, 36364), (105, 36367), (109, 36397), (110, 36415), (117, 36556), (122, 36607), (135, 36817), (136, 36823), (140, 36862), (141, 36904), (143, 36916), (145, 36934), (164, 37108), (166, 37117), (167, 37120), (169, 37123), (171, 37135), (175, 37147), (176, 37150), (178, 37165), (195, 37252), (197, 37267), (212, 37411), (213, 37423), (233, 37603), (236, 37621), (245,

37702), (249, 37738), (251, 37759), (255, 37825),

Gene: Morizzled23_90 Start: 34975, Stop: 37578, Start Num: 6

Candidate Starts for Morizzled23_90:

(Start: 6 @34975 has 150 MA's), (13, 35044), (Start: 14 @35050 has 2 MA's), (19, 35068), (24, 35104), (42, 35212), (45, 35224), (56, 35389), (57, 35395), (67, 35590), (70, 35611), (72, 35632), (73, 35641), (79, 35698), (81, 35740), (83, 35794), (84, 35839), (91, 35908), (93, 35944), (95, 35971), (97, 35998), (101, 36058), (104, 36091), (105, 36094), (108, 36115), (110, 36142), (113, 36214), (117, 36283), (122, 36334), (135, 36544), (136, 36550), (137, 36556), (140, 36589), (141, 36631), (143, 36643), (145, 36661), (164, 36835), (166, 36844), (167, 36847), (169, 36850), (171, 36862), (175, 36874), (176, 36877), (178, 36892), (195, 36958), (197, 36973), (212, 37117), (213, 37129), (233, 37309), (236, 37327), (245, 37408), (249, 37444), (251, 37465), (255, 37531),

Gene: Myrna_89 Start: 37944, Stop: 40463, Start Num: 14

Candidate Starts for Myrna_89:

(Start: 14 @37944 has 2 MA's), (17, 37947), (25, 38004), (29, 38040), (32, 38049), (34, 38070), (37, 38088), (39, 38097), (42, 38118), (45, 38130), (46, 38139), (54, 38256), (57, 38301), (59, 38349), (67, 38496), (70, 38517), (72, 38538), (73, 38547), (74, 38559), (75, 38562), (77, 38586), (84, 38745), (91, 38814), (93, 38850), (105, 39000), (109, 39030), (110, 39048), (116, 39186), (117, 39189), (118, 39192), (124, 39288), (125, 39294), (130, 39357), (132, 39381), (135, 39450), (136, 39456), (137, 39462), (139, 39477), (140, 39495), (143, 39549), (145, 39567), (162, 39729), (164, 39741), (167, 39753), (175, 39780), (178, 39798), (180, 39804), (192, 39864), (194, 39894), (211, 40056), (213, 40080), (232, 40218), (235, 40233), (239, 40260), (243, 40284), (257, 40437),

Gene: Naija_89 Start: 35248, Stop: 37872, Start Num: 6

Candidate Starts for Naija_89:

(Start: 6 @35248 has 150 MA's), (13, 35317), (Start: 14 @35323 has 2 MA's), (19, 35341), (24, 35377), (42, 35485), (45, 35497), (56, 35662), (57, 35668), (67, 35863), (70, 35884), (72, 35905), (73, 35914), (79, 35971), (81, 36013), (83, 36067), (84, 36112), (91, 36181), (93, 36217), (95, 36244), (97, 36271), (101, 36331), (104, 36364), (105, 36367), (109, 36397), (110, 36415), (117, 36556), (122, 36607), (135, 36817), (136, 36823), (140, 36862), (141, 36904), (143, 36916), (145, 36934), (164, 37108), (166, 37117), (167, 37120), (169, 37123), (171, 37135), (175, 37147), (176, 37150), (178, 37165), (195, 37252), (197, 37267), (212, 37411), (213, 37423), (233, 37603), (236, 37621), (245, 37702), (249, 37738), (251, 37759), (255, 37825),

Gene: Napoleon13_86 Start: 34051, Stop: 36675, Start Num: 6

Candidate Starts for Napoleon13_86:

(Start: 6 @34051 has 150 MA's), (13, 34120), (Start: 14 @34126 has 2 MA's), (19, 34144), (24, 34180), (42, 34288), (45, 34300), (56, 34465), (57, 34471), (67, 34666), (70, 34687), (72, 34708), (73, 34717), (79, 34774), (81, 34816), (83, 34870), (84, 34915), (91, 34984), (93, 35020), (95, 35047), (97, 35074), (101, 35134), (104, 35167), (105, 35170), (108, 35191), (110, 35218), (113, 35290), (117, 35359), (122, 35410), (135, 35620), (136, 35626), (140, 35665), (141, 35707), (143, 35719), (145, 35737), (164, 35911), (166, 35920), (167, 35923), (169, 35926), (171, 35938), (175, 35950), (176, 35953), (178, 35968), (195, 36055), (197, 36070), (212, 36214), (213, 36226), (233, 36406), (236, 36424), (245, 36505), (249, 36541), (251, 36562), (255, 36628),

Gene: Nappy_92 Start: 36807, Stop: 39431, Start Num: 6

Candidate Starts for Nappy_92:

(Start: 6 @36807 has 150 MA's), (13, 36876), (Start: 14 @36882 has 2 MA's), (19, 36900), (24, 36936), (42, 37044), (45, 37056), (56, 37221), (57, 37227), (67, 37422), (70, 37443), (72, 37464), (73, 37473), (79, 37530), (81, 37572), (83, 37626), (84, 37671), (91, 37740), (93, 37776), (95, 37803), (97, 37830), (101, 37890), (104, 37923), (105, 37926), (109, 37956), (110, 37974), (117, 38115), (122, 38166), (135, 38376), (136, 38382), (137, 38388), (140, 38421), (141, 38463), (143, 38475), (145,

38493), (164, 38667), (166, 38676), (167, 38679), (169, 38682), (171, 38694), (175, 38706), (176, 38709), (178, 38724), (195, 38811), (197, 38826), (212, 38970), (213, 38982), (233, 39162), (236, 39180), (245, 39261), (249, 39297), (251, 39318), (255, 39384),

Gene: Naval22_95 Start: 37847, Stop: 40471, Start Num: 6

Candidate Starts for Naval22_95:

(Start: 6 @37847 has 150 MA's), (13, 37916), (Start: 14 @37922 has 2 MA's), (19, 37940), (24, 37976), (42, 38084), (45, 38096), (56, 38261), (57, 38267), (67, 38462), (70, 38483), (72, 38504), (73, 38513), (79, 38570), (81, 38612), (83, 38666), (84, 38711), (91, 38780), (93, 38816), (95, 38843), (97, 38870), (101, 38930), (104, 38963), (105, 38966), (109, 38996), (110, 39014), (117, 39155), (122, 39206), (135, 39416), (136, 39422), (140, 39461), (141, 39503), (143, 39515), (145, 39533), (164, 39707), (166, 39716), (167, 39719), (169, 39722), (171, 39734), (175, 39746), (176, 39749), (178, 39764), (195, 39851), (197, 39866), (212, 40010), (213, 40022), (233, 40202), (236, 40220), (245, 40301), (249, 40337), (251, 40358), (255, 40424),

Gene: NedWong_91 Start: 36243, Stop: 38867, Start Num: 6

Candidate Starts for NedWong_91:

(Start: 6 @36243 has 150 MA's), (13, 36312), (Start: 14 @36318 has 2 MA's), (19, 36336), (24, 36372), (42, 36480), (45, 36492), (56, 36657), (57, 36663), (67, 36858), (70, 36879), (72, 36900), (73, 36909), (79, 36966), (81, 37008), (83, 37062), (84, 37107), (91, 37176), (93, 37212), (95, 37239), (97, 37266), (101, 37326), (104, 37359), (105, 37362), (109, 37392), (110, 37410), (117, 37551), (122, 37602), (135, 37812), (136, 37818), (140, 37857), (141, 37899), (143, 37911), (145, 37929), (164, 38103), (166, 38112), (167, 38115), (169, 38118), (171, 38130), (175, 38142), (176, 38145), (178, 38160), (195, 38247), (197, 38262), (212, 38406), (213, 38418), (233, 38598), (236, 38616), (245, 38697), (249, 38733), (251, 38754), (255, 38820),

Gene: Ngannou_86 Start: 34230, Stop: 36854, Start Num: 6

Candidate Starts for Ngannou_86:

(Start: 6 @34230 has 150 MA's), (13, 34299), (Start: 14 @34305 has 2 MA's), (19, 34323), (24, 34359), (42, 34467), (45, 34479), (56, 34644), (57, 34650), (67, 34845), (70, 34866), (72, 34887), (73, 34896), (79, 34953), (81, 34995), (83, 35049), (84, 35094), (91, 35163), (93, 35199), (95, 35226), (97, 35253), (101, 35313), (104, 35346), (105, 35349), (109, 35379), (110, 35397), (117, 35538), (122, 35589), (135, 35799), (136, 35805), (140, 35844), (141, 35886), (143, 35898), (145, 35916), (164, 36090), (166, 36099), (167, 36102), (169, 36105), (171, 36117), (175, 36129), (176, 36132), (178, 36147), (195, 36234), (197, 36249), (212, 36393), (213, 36405), (233, 36585), (236, 36603), (245, 36684), (249, 36720), (251, 36741), (255, 36807),

Gene: Nidhogg_91 Start: 36097, Stop: 38721, Start Num: 6

Candidate Starts for Nidhogg_91:

(Start: 6 @36097 has 150 MA's), (13, 36166), (Start: 14 @36172 has 2 MA's), (19, 36190), (24, 36226), (42, 36334), (45, 36346), (56, 36511), (57, 36517), (67, 36712), (70, 36733), (72, 36754), (73, 36763), (79, 36820), (81, 36862), (83, 36916), (84, 36961), (91, 37030), (93, 37066), (95, 37093), (97, 37120), (101, 37180), (104, 37213), (105, 37216), (108, 37237), (110, 37264), (113, 37336), (117, 37405), (122, 37456), (135, 37666), (136, 37672), (140, 37711), (141, 37753), (143, 37765), (145, 37783), (164, 37957), (166, 37966), (167, 37969), (169, 37972), (171, 37984), (175, 37996), (176, 37999), (178, 38014), (195, 38101), (197, 38116), (212, 38260), (213, 38272), (233, 38452), (236, 38470), (245, 38551), (249, 38587), (251, 38608), (255, 38674),

Gene: NoodleTree_98 Start: 37274, Stop: 39898, Start Num: 6

Candidate Starts for NoodleTree_98:

(Start: 6 @37274 has 150 MA's), (13, 37343), (Start: 14 @37349 has 2 MA's), (19, 37367), (24, 37403), (42, 37511), (45, 37523), (56, 37688), (57, 37694), (67, 37889), (70, 37910), (72, 37931), (73, 37940), (79, 37997), (81, 38039), (83, 38093), (84, 38138), (91, 38207), (93, 38243), (95, 38270), (97,

38297), (101, 38357), (104, 38390), (105, 38393), (109, 38423), (110, 38441), (117, 38582), (122, 38633), (135, 38843), (136, 38849), (137, 38855), (140, 38888), (141, 38930), (143, 38942), (145, 38960), (164, 39134), (166, 39143), (167, 39146), (169, 39149), (171, 39161), (175, 39173), (176, 39176), (178, 39191), (195, 39278), (197, 39293), (212, 39437), (213, 39449), (233, 39629), (236, 39647), (245, 39728), (249, 39764), (251, 39785), (255, 39851),

Gene: Norm_91 Start: 36245, Stop: 38869, Start Num: 6

Candidate Starts for Norm_91:

(Start: 6 @36245 has 150 MA's), (13, 36314), (Start: 14 @36320 has 2 MA's), (19, 36338), (24, 36374), (42, 36482), (45, 36494), (56, 36659), (57, 36665), (67, 36860), (70, 36881), (72, 36902), (73, 36911), (79, 36968), (81, 37010), (83, 37064), (84, 37109), (91, 37178), (93, 37214), (95, 37241), (97, 37268), (101, 37328), (104, 37361), (105, 37364), (109, 37394), (110, 37412), (117, 37553), (122, 37604), (135, 37814), (136, 37820), (140, 37859), (141, 37901), (143, 37913), (145, 37931), (164, 38105), (166, 38114), (167, 38117), (169, 38120), (171, 38132), (175, 38144), (176, 38147), (178, 38162), (195, 38249), (197, 38264), (212, 38408), (213, 38420), (233, 38600), (236, 38618), (245, 38699), (249, 38735), (251, 38756), (255, 38822),

Gene: NuevoMundo_96 Start: 38204, Stop: 40828, Start Num: 6

Candidate Starts for NuevoMundo_96:

(Start: 6 @38204 has 150 MA's), (13, 38273), (Start: 14 @38279 has 2 MA's), (19, 38297), (24, 38333), (42, 38441), (45, 38453), (56, 38618), (57, 38624), (67, 38819), (70, 38840), (72, 38861), (73, 38870), (79, 38927), (81, 38969), (83, 39023), (84, 39068), (91, 39137), (93, 39173), (95, 39200), (97, 39227), (101, 39287), (104, 39320), (105, 39323), (109, 39353), (110, 39371), (117, 39512), (122, 39563), (135, 39773), (136, 39779), (137, 39785), (140, 39818), (141, 39860), (143, 39872), (145, 39890), (164, 40064), (166, 40073), (167, 40076), (169, 40079), (171, 40091), (175, 40103), (176, 40106), (178, 40121), (195, 40208), (197, 40223), (212, 40367), (213, 40379), (233, 40559), (236, 40577), (245, 40658), (249, 40694), (251, 40715), (255, 40781),

Gene: ParkTD_91 Start: 36239, Stop: 38863, Start Num: 6

Candidate Starts for ParkTD_91:

(Start: 6 @36239 has 150 MA's), (13, 36308), (Start: 14 @36314 has 2 MA's), (19, 36332), (24, 36368), (42, 36476), (45, 36488), (56, 36653), (57, 36659), (67, 36854), (70, 36875), (72, 36896), (73, 36905), (79, 36962), (81, 37004), (83, 37058), (84, 37103), (91, 37172), (93, 37208), (95, 37235), (97, 37262), (101, 37322), (104, 37355), (105, 37358), (109, 37388), (110, 37406), (117, 37547), (122, 37598), (135, 37808), (136, 37814), (140, 37853), (141, 37895), (143, 37907), (145, 37925), (164, 38099), (166, 38108), (167, 38111), (169, 38114), (171, 38126), (175, 38138), (176, 38141), (178, 38156), (195, 38243), (197, 38258), (212, 38402), (213, 38414), (233, 38594), (236, 38612), (245, 38693), (249, 38729), (251, 38750), (255, 38816),

Gene: Patter_90 Start: 35265, Stop: 37889, Start Num: 6

Candidate Starts for Patter_90:

(Start: 6 @35265 has 150 MA's), (13, 35334), (Start: 14 @35340 has 2 MA's), (19, 35358), (24, 35394), (42, 35502), (45, 35514), (56, 35679), (57, 35685), (67, 35880), (70, 35901), (72, 35922), (73, 35931), (79, 35988), (81, 36030), (83, 36084), (84, 36129), (91, 36198), (93, 36234), (95, 36261), (97, 36288), (101, 36348), (104, 36381), (105, 36384), (109, 36414), (110, 36432), (117, 36573), (122, 36624), (135, 36834), (136, 36840), (140, 36879), (141, 36921), (143, 36933), (145, 36951), (164, 37125), (166, 37134), (167, 37137), (169, 37140), (171, 37152), (175, 37164), (176, 37167), (178, 37182), (195, 37269), (197, 37284), (212, 37428), (213, 37440), (233, 37620), (236, 37638), (245, 37719), (249, 37755), (251, 37776), (255, 37842),

Gene: Phabba_94 Start: 37026, Stop: 39536, Start Num: 14

Candidate Starts for Phabba_94:

(Start: 14 @37026 has 2 MA's), (17, 37032), (22, 37071), (25, 37089), (32, 37134), (34, 37155), (37, 37173), (39, 37182), (42, 37203), (45, 37215), (46, 37224), (54, 37341), (57, 37386), (59, 37434), (67, 37581), (70, 37602), (72, 37623), (73, 37632), (74, 37644), (75, 37647), (77, 37671), (91, 37899), (93, 37935), (105, 38085), (109, 38115), (110, 38133), (116, 38271), (117, 38274), (118, 38277), (124, 38373), (125, 38379), (130, 38442), (131, 38457), (135, 38535), (136, 38541), (137, 38547), (139, 38562), (140, 38580), (143, 38634), (145, 38652), (157, 38781), (162, 38814), (164, 38826), (167, 38838), (175, 38865), (178, 38883), (232, 39291), (239, 39333), (253, 39477), (257, 39510),

Gene: Phlegm_92 Start: 35248, Stop: 37872, Start Num: 6

Candidate Starts for Phlegm_92:

(Start: 6 @35248 has 150 MA's), (13, 35317), (Start: 14 @35323 has 2 MA's), (19, 35341), (24, 35377), (42, 35485), (45, 35497), (56, 35662), (57, 35668), (67, 35863), (70, 35884), (72, 35905), (73, 35914), (79, 35971), (81, 36013), (83, 36067), (84, 36112), (91, 36181), (93, 36217), (95, 36244), (97, 36271), (101, 36331), (104, 36364), (105, 36367), (109, 36397), (110, 36415), (117, 36556), (122, 36607), (135, 36817), (136, 36823), (140, 36862), (141, 36904), (143, 36916), (145, 36934), (164, 37108), (166, 37117), (167, 37120), (169, 37123), (171, 37135), (175, 37147), (176, 37150), (178, 37165), (195, 37252), (197, 37267), (212, 37411), (213, 37423), (233, 37603), (236, 37621), (245, 37702), (249, 37738), (251, 37759), (255, 37825),

Gene: Phox_87 Start: 36133, Stop: 38736, Start Num: 6

Candidate Starts for Phox_87:

(Start: 6 @36133 has 150 MA's), (13, 36202), (Start: 14 @36208 has 2 MA's), (19, 36226), (24, 36262), (42, 36370), (45, 36382), (56, 36547), (57, 36553), (67, 36748), (70, 36769), (72, 36790), (73, 36799), (79, 36856), (81, 36898), (83, 36952), (84, 36997), (91, 37066), (93, 37102), (95, 37129), (97, 37156), (101, 37216), (104, 37249), (105, 37252), (108, 37273), (110, 37300), (113, 37372), (117, 37441), (122, 37492), (135, 37702), (136, 37708), (137, 37714), (140, 37747), (141, 37789), (143, 37801), (145, 37819), (164, 37993), (166, 38002), (167, 38005), (169, 38008), (171, 38020), (175, 38032), (176, 38035), (178, 38050), (195, 38116), (197, 38131), (212, 38275), (213, 38287), (233, 38467), (236, 38485), (245, 38566), (249, 38602), (251, 38623), (255, 38689),

Gene: Phrappuccino_46 Start: 26549, Stop: 28942, Start Num: 4

Candidate Starts for Phrappuccino_46:

(Start: 4 @26549 has 2 MA's), (12, 26636), (13, 26660), (18, 26681), (21, 26708), (23, 26717), (28, 26759), (31, 26771), (33, 26786), (45, 26828), (46, 26837), (49, 26873), (52, 26918), (53, 26930), (54, 26954), (59, 27047), (69, 27200), (72, 27233), (73, 27242), (74, 27254), (89, 27473), (92, 27497), (93, 27530), (96, 27560), (97, 27584), (98, 27614), (101, 27644), (103, 27659), (106, 27689), (110, 27728), (111, 27764), (112, 27773), (114, 27860), (117, 27875), (127, 27998), (130, 28043), (137, 28148), (139, 28163), (141, 28223), (142, 28232), (144, 28250), (145, 28253), (147, 28268), (151, 28313), (153, 28331), (156, 28358), (158, 28388), (167, 28409), (169, 28412), (178, 28433), (204, 28457), (205, 28466), (208, 28475), (213, 28511), (217, 28535), (219, 28568), (220, 28580), (237, 28718), (239, 28733), (248, 28796), (249, 28805), (255, 28892), (258, 28928),

Gene: Phusco_90 Start: 36013, Stop: 38637, Start Num: 6

Candidate Starts for Phusco_90:

(Start: 6 @36013 has 150 MA's), (13, 36082), (Start: 14 @36088 has 2 MA's), (19, 36106), (24, 36142), (42, 36250), (45, 36262), (56, 36427), (57, 36433), (67, 36628), (70, 36649), (72, 36670), (73, 36679), (79, 36736), (81, 36778), (83, 36832), (84, 36877), (91, 36946), (93, 36982), (95, 37009), (97, 37036), (101, 37096), (104, 37129), (105, 37132), (109, 37162), (110, 37180), (117, 37321), (122, 37372), (135, 37582), (136, 37588), (140, 37627), (141, 37669), (143, 37681), (145, 37699), (164, 37873), (166, 37882), (167, 37885), (169, 37888), (171, 37900), (175, 37912), (176, 37915), (178, 37930), (195, 38017), (197, 38032), (212, 38176), (213, 38188), (233, 38368), (236, 38386), (245, 38467), (249, 38503), (251, 38524), (255, 38590),

Gene: Pinkcreek_81 Start: 33219, Stop: 35822, Start Num: 6

Candidate Starts for Pinkcreek_81:

(Start: 6 @33219 has 150 MA's), (13, 33288), (Start: 14 @33294 has 2 MA's), (19, 33312), (24, 33348), (42, 33456), (45, 33468), (54, 33594), (57, 33639), (67, 33834), (70, 33855), (72, 33876), (73, 33885), (79, 33942), (81, 33984), (83, 34038), (84, 34083), (91, 34152), (93, 34188), (95, 34215), (97, 34242), (101, 34302), (104, 34335), (105, 34338), (108, 34359), (110, 34386), (113, 34458), (117, 34527), (122, 34578), (135, 34788), (136, 34794), (137, 34800), (140, 34833), (141, 34875), (143, 34887), (145, 34905), (164, 35079), (166, 35088), (167, 35091), (169, 35094), (171, 35106), (175, 35118), (176, 35121), (178, 35136), (195, 35202), (197, 35217), (212, 35361), (213, 35373), (233, 35553), (236, 35571), (245, 35652), (249, 35688), (251, 35709), (255, 35775),

Gene: Pivoine_89 Start: 35248, Stop: 37872, Start Num: 6

Candidate Starts for Pivoine_89:

(Start: 6 @35248 has 150 MA's), (13, 35317), (Start: 14 @35323 has 2 MA's), (19, 35341), (24, 35377), (42, 35485), (45, 35497), (56, 35662), (57, 35668), (67, 35863), (70, 35884), (72, 35905), (73, 35914), (79, 35971), (81, 36013), (83, 36067), (84, 36112), (91, 36181), (93, 36217), (95, 36244), (97, 36271), (101, 36331), (104, 36364), (105, 36367), (109, 36397), (110, 36415), (117, 36556), (122, 36607), (135, 36817), (136, 36823), (140, 36862), (141, 36904), (143, 36916), (145, 36934), (164, 37108), (166, 37117), (167, 37120), (169, 37123), (171, 37135), (175, 37147), (176, 37150), (178, 37165), (195, 37252), (197, 37267), (212, 37411), (213, 37423), (233, 37603), (236, 37621), (245, 37702), (249, 37738), (251, 37759), (255, 37825),

Gene: Pleione_93 Start: 36242, Stop: 38866, Start Num: 6

Candidate Starts for Pleione_93:

(Start: 6 @36242 has 150 MA's), (13, 36311), (Start: 14 @36317 has 2 MA's), (19, 36335), (24, 36371), (42, 36479), (45, 36491), (56, 36656), (57, 36662), (67, 36857), (70, 36878), (72, 36899), (73, 36908), (79, 36965), (81, 37007), (83, 37061), (84, 37106), (91, 37175), (93, 37211), (95, 37238), (97, 37265), (101, 37325), (104, 37358), (105, 37361), (109, 37391), (110, 37409), (117, 37550), (122, 37601), (135, 37811), (136, 37817), (140, 37856), (141, 37898), (143, 37910), (145, 37928), (164, 38102), (166, 38111), (167, 38114), (169, 38117), (171, 38129), (175, 38141), (176, 38144), (178, 38159), (195, 38246), (197, 38261), (212, 38405), (213, 38417), (233, 38597), (236, 38615), (245, 38696), (249, 38732), (251, 38753), (255, 38819),

Gene: Pupper_88 Start: 36748, Stop: 39342, Start Num: 9

Candidate Starts for Pupper_88:

(Start: 6 @36730 has 150 MA's), (Start: 9 @36748 has 1 MA's), (21, 36847), (27, 36886), (42, 36949), (45, 36961), (48, 36991), (59, 37180), (61, 37207), (67, 37327), (69, 37336), (70, 37348), (71, 37354), (72, 37369), (73, 37378), (74, 37390), (76, 37402), (82, 37516), (84, 37576), (87, 37603), (90, 37642), (91, 37645), (93, 37681), (94, 37705), (101, 37795), (110, 37879), (112, 37924), (115, 38008), (116, 38017), (117, 38020), (122, 38071), (123, 38074), (135, 38281), (136, 38287), (141, 38368), (142, 38377), (143, 38380), (145, 38398), (148, 38416), (152, 38467), (155, 38509), (160, 38551), (163, 38566), (167, 38575), (174, 38593), (175, 38596), (177, 38608), (182, 38620), (184, 38635), (185, 38638), (191, 38668), (202, 38764), (210, 38842), (216, 38887), (219, 38926), (230, 39028), (237, 39103), (240, 39127), (241, 39130), (249, 39202), (255, 39295), (256, 39304), (257, 39316),

Gene: PurduePete_90 Start: 36287, Stop: 38911, Start Num: 6

Candidate Starts for PurduePete_90:

(Start: 6 @36287 has 150 MA's), (13, 36356), (Start: 14 @36362 has 2 MA's), (19, 36380), (24, 36416), (42, 36524), (45, 36536), (56, 36701), (57, 36707), (67, 36902), (70, 36923), (72, 36944), (73, 36953), (79, 37010), (81, 37052), (83, 37106), (84, 37151), (91, 37220), (93, 37256), (95, 37283), (97, 37310), (101, 37370), (104, 37403), (105, 37406), (108, 37427), (110, 37454), (113, 37526), (117, 37595), (122, 37646), (135, 37856), (136, 37862), (140, 37901), (141, 37943), (143, 37955), (145, 37973), (164, 38147), (166, 38156), (167, 38159), (169, 38162), (171, 38174), (175, 38186), (176,

38189), (178, 38204), (195, 38291), (197, 38306), (212, 38450), (213, 38462), (233, 38642), (236, 38660), (245, 38741), (249, 38777), (251, 38798), (255, 38864),

Gene: QBert_84 Start: 35743, Stop: 38367, Start Num: 6

Candidate Starts for QBert_84:

(Start: 6 @35743 has 150 MA's), (13, 35812), (Start: 14 @35818 has 2 MA's), (19, 35836), (24, 35872), (42, 35980), (45, 35992), (56, 36157), (57, 36163), (67, 36358), (70, 36379), (72, 36400), (73, 36409), (79, 36466), (81, 36508), (83, 36562), (84, 36607), (91, 36676), (93, 36712), (95, 36739), (97, 36766), (101, 36826), (104, 36859), (105, 36862), (109, 36892), (110, 36910), (117, 37051), (122, 37102), (135, 37312), (136, 37318), (140, 37357), (141, 37399), (143, 37411), (145, 37429), (164, 37603), (166, 37612), (167, 37615), (169, 37618), (171, 37630), (175, 37642), (176, 37645), (178, 37660), (195, 37747), (197, 37762), (212, 37906), (213, 37918), (233, 38098), (236, 38116), (245, 38197), (249, 38233), (251, 38254), (255, 38320),

Gene: Quasimodo_90 Start: 35799, Stop: 38402, Start Num: 6

Candidate Starts for Quasimodo_90:

(Start: 6 @35799 has 150 MA's), (13, 35868), (Start: 14 @35874 has 2 MA's), (19, 35892), (24, 35928), (42, 36036), (45, 36048), (56, 36213), (57, 36219), (67, 36414), (70, 36435), (72, 36456), (73, 36465), (79, 36522), (81, 36564), (83, 36618), (84, 36663), (91, 36732), (93, 36768), (95, 36795), (97, 36822), (101, 36882), (104, 36915), (105, 36918), (108, 36939), (110, 36966), (113, 37038), (117, 37107), (122, 37158), (135, 37368), (136, 37374), (137, 37380), (140, 37413), (141, 37455), (143, 37467), (145, 37485), (164, 37659), (166, 37668), (167, 37671), (169, 37674), (171, 37686), (175, 37698), (176, 37701), (178, 37716), (195, 37782), (197, 37797), (212, 37941), (213, 37953), (233, 38133), (236, 38151), (245, 38232), (249, 38268), (251, 38289), (255, 38355),

Gene: Rabinovish_87 Start: 36106, Stop: 38709, Start Num: 6

Candidate Starts for Rabinovish_87:

(Start: 6 @36106 has 150 MA's), (13, 36175), (Start: 14 @36181 has 2 MA's), (19, 36199), (24, 36235), (42, 36343), (45, 36355), (56, 36520), (57, 36526), (67, 36721), (70, 36742), (72, 36763), (73, 36772), (79, 36829), (81, 36871), (83, 36925), (84, 36970), (91, 37039), (93, 37075), (95, 37102), (97, 37129), (101, 37189), (104, 37222), (105, 37225), (108, 37246), (110, 37273), (113, 37345), (117, 37414), (122, 37465), (135, 37675), (136, 37681), (137, 37687), (140, 37720), (141, 37762), (143, 37774), (145, 37792), (164, 37966), (166, 37975), (167, 37978), (169, 37981), (171, 37993), (175, 38005), (176, 38008), (178, 38023), (195, 38089), (197, 38104), (212, 38248), (213, 38260), (233, 38440), (236, 38458), (245, 38539), (249, 38575), (251, 38596), (255, 38662),

Gene: RedWattleHog_11 Start: 9594, Stop: 12170, Start Num: 10

Candidate Starts for RedWattleHog_11:

(8, 9585), (Start: 10 @9594 has 3 MA's), (26, 9702), (36, 9765), (40, 9783), (44, 9810), (46, 9825), (47, 9837), (57, 9987), (59, 10035), (60, 10041), (66, 10143), (70, 10197), (72, 10218), (74, 10239), (80, 10302), (85, 10416), (86, 10425), (91, 10482), (92, 10485), (93, 10518), (100, 10629), (101, 10632), (104, 10665), (109, 10698), (110, 10716), (112, 10761), (116, 10854), (117, 10857), (119, 10878), (120, 10890), (126, 10971), (128, 10983), (136, 11124), (145, 11235), (181, 11451), (225, 11775), (235, 11889), (237, 11910), (249, 12024), (250, 12036), (252, 12045), (254, 12111), (255, 12120),

Gene: Rizal_88 Start: 35160, Stop: 37784, Start Num: 6

Candidate Starts for Rizal_88:

(Start: 6 @35160 has 150 MA's), (13, 35229), (Start: 14 @35235 has 2 MA's), (19, 35253), (24, 35289), (42, 35397), (45, 35409), (56, 35574), (57, 35580), (67, 35775), (70, 35796), (72, 35817), (73, 35826), (79, 35883), (81, 35925), (83, 35979), (84, 36024), (91, 36093), (93, 36129), (95, 36156), (97, 36183), (101, 36243), (104, 36276), (105, 36279), (108, 36300), (110, 36327), (113, 36399), (117, 36468), (122, 36519), (135, 36729), (136, 36735), (140, 36774), (141, 36816), (143, 36828), (145, 36846), (164, 37020), (166, 37029), (167, 37032), (169, 37035), (171, 37047), (175, 37059), (176,

37062), (178, 37077), (195, 37164), (197, 37179), (212, 37323), (213, 37335), (233, 37515), (236, 37533), (245, 37614), (249, 37650), (251, 37671), (255, 37737),

Gene: RoMag_85 Start: 35602, Stop: 38226, Start Num: 6

Candidate Starts for RoMag_85:

(Start: 6 @35602 has 150 MA's), (13, 35671), (Start: 14 @35677 has 2 MA's), (19, 35695), (24, 35731), (42, 35839), (45, 35851), (56, 36016), (57, 36022), (67, 36217), (70, 36238), (72, 36259), (73, 36268), (79, 36325), (81, 36367), (83, 36421), (84, 36466), (91, 36535), (93, 36571), (95, 36598), (97, 36625), (101, 36685), (104, 36718), (105, 36721), (109, 36751), (110, 36769), (117, 36910), (122, 36961), (135, 37171), (136, 37177), (137, 37183), (140, 37216), (141, 37258), (143, 37270), (145, 37288), (164, 37462), (166, 37471), (167, 37474), (169, 37477), (171, 37489), (175, 37501), (176, 37504), (178, 37519), (195, 37606), (197, 37621), (212, 37765), (213, 37777), (233, 37957), (236, 37975), (245, 38056), (249, 38092), (251, 38113), (255, 38179),

Gene: Ronan_83 Start: 33049, Stop: 35673, Start Num: 6

Candidate Starts for Ronan_83:

(Start: 6 @33049 has 150 MA's), (13, 33118), (Start: 14 @33124 has 2 MA's), (19, 33142), (24, 33178), (42, 33286), (45, 33298), (56, 33463), (57, 33469), (67, 33664), (70, 33685), (72, 33706), (73, 33715), (79, 33772), (81, 33814), (83, 33868), (84, 33913), (91, 33982), (93, 34018), (95, 34045), (97, 34072), (101, 34132), (104, 34165), (105, 34168), (109, 34198), (110, 34216), (117, 34357), (122, 34408), (135, 34618), (136, 34624), (140, 34663), (141, 34705), (143, 34717), (145, 34735), (164, 34909), (166, 34918), (167, 34921), (169, 34924), (171, 34936), (175, 34948), (176, 34951), (178, 34966), (195, 35053), (197, 35068), (212, 35212), (213, 35224), (233, 35404), (236, 35422), (245, 35503), (249, 35539), (251, 35560), (255, 35626),

Gene: Roots515_89 Start: 35665, Stop: 38289, Start Num: 6

Candidate Starts for Roots515_89:

(Start: 6 @35665 has 150 MA's), (13, 35734), (Start: 14 @35740 has 2 MA's), (19, 35758), (24, 35794), (42, 35902), (45, 35914), (56, 36079), (57, 36085), (67, 36280), (70, 36301), (72, 36322), (73, 36331), (79, 36388), (81, 36430), (83, 36484), (84, 36529), (91, 36598), (93, 36634), (95, 36661), (97, 36688), (101, 36748), (104, 36781), (105, 36784), (109, 36814), (110, 36832), (117, 36973), (122, 37024), (135, 37234), (136, 37240), (140, 37279), (141, 37321), (143, 37333), (145, 37351), (164, 37525), (166, 37534), (167, 37537), (169, 37540), (171, 37552), (175, 37564), (176, 37567), (178, 37582), (195, 37669), (197, 37684), (212, 37828), (213, 37840), (233, 38020), (236, 38038), (245, 38119), (249, 38155), (251, 38176), (255, 38242),

Gene: SCentae_87 Start: 36876, Stop: 39488, Start Num: 6

Candidate Starts for SCentae_87:

(1, 36738), (2, 36747), (Start: 6 @36876 has 150 MA's), (Start: 9 @36894 has 1 MA's), (21, 36993), (27, 37032), (42, 37095), (45, 37107), (48, 37137), (59, 37326), (61, 37353), (67, 37473), (69, 37482), (70, 37494), (71, 37500), (72, 37515), (73, 37524), (74, 37536), (76, 37548), (82, 37662), (84, 37722), (87, 37749), (90, 37788), (91, 37791), (93, 37827), (94, 37851), (101, 37941), (110, 38025), (112, 38070), (115, 38154), (116, 38163), (117, 38166), (122, 38217), (123, 38220), (135, 38427), (136, 38433), (141, 38514), (142, 38523), (143, 38526), (145, 38544), (148, 38562), (152, 38613), (155, 38655), (160, 38697), (163, 38712), (167, 38721), (174, 38739), (175, 38742), (177, 38754), (182, 38766), (184, 38781), (185, 38784), (191, 38814), (202, 38910), (210, 38988), (216, 39033), (219, 39072), (230, 39174), (237, 39249), (240, 39273), (241, 39276), (249, 39348), (255, 39441), (256, 39450), (257, 39462),

Gene: Salacia_94 Start: 36357, Stop: 38981, Start Num: 6

Candidate Starts for Salacia_94:

(Start: 6 @36357 has 150 MA's), (13, 36426), (Start: 14 @36432 has 2 MA's), (19, 36450), (24, 36486), (42, 36594), (45, 36606), (56, 36771), (57, 36777), (67, 36972), (70, 36993), (72, 37014), (73,

37023), (79, 37080), (81, 37122), (83, 37176), (84, 37221), (91, 37290), (93, 37326), (95, 37353), (97, 37380), (101, 37440), (104, 37473), (105, 37476), (109, 37506), (110, 37524), (117, 37665), (122, 37716), (135, 37926), (136, 37932), (140, 37971), (141, 38013), (143, 38025), (145, 38043), (164, 38217), (166, 38226), (167, 38229), (169, 38232), (171, 38244), (175, 38256), (176, 38259), (178, 38274), (195, 38361), (197, 38376), (212, 38520), (213, 38532), (233, 38712), (236, 38730), (245, 38811), (249, 38847), (251, 38868), (255, 38934),

Gene: Sauce_90 Start: 35097, Stop: 37721, Start Num: 6

Candidate Starts for Sauce_90:

(Start: 6 @35097 has 150 MA's), (13, 35166), (Start: 14 @35172 has 2 MA's), (19, 35190), (24, 35226), (42, 35334), (45, 35346), (56, 35511), (57, 35517), (67, 35712), (70, 35733), (72, 35754), (73, 35763), (79, 35820), (81, 35862), (83, 35916), (84, 35961), (91, 36030), (93, 36066), (95, 36093), (97, 36120), (101, 36180), (104, 36213), (105, 36216), (109, 36246), (110, 36264), (117, 36405), (122, 36456), (135, 36666), (136, 36672), (140, 36711), (141, 36753), (143, 36765), (145, 36783), (164, 36957), (166, 36966), (167, 36969), (169, 36972), (171, 36984), (175, 36996), (176, 36999), (178, 37014), (195, 37101), (197, 37116), (212, 37260), (213, 37272), (233, 37452), (236, 37470), (245, 37551), (249, 37587), (251, 37608), (255, 37674),

Gene: ScottMcG_87 Start: 35250, Stop: 37853, Start Num: 6

Candidate Starts for ScottMcG_87:

(Start: 6 @35250 has 150 MA's), (13, 35319), (Start: 14 @35325 has 2 MA's), (19, 35343), (24, 35379), (42, 35487), (45, 35499), (56, 35664), (57, 35670), (67, 35865), (70, 35886), (72, 35907), (73, 35916), (79, 35973), (81, 36015), (83, 36069), (84, 36114), (91, 36183), (93, 36219), (95, 36246), (97, 36273), (101, 36333), (104, 36366), (105, 36369), (108, 36390), (110, 36417), (113, 36489), (117, 36558), (122, 36609), (135, 36819), (136, 36825), (137, 36831), (140, 36864), (141, 36906), (143, 36918), (145, 36936), (164, 37110), (166, 37119), (167, 37122), (169, 37125), (171, 37137), (175, 37149), (176, 37152), (178, 37167), (195, 37233), (197, 37248), (212, 37392), (213, 37404), (233, 37584), (236, 37602), (245, 37683), (249, 37719), (251, 37740), (255, 37806),

Gene: Sebata_91 Start: 36733, Stop: 39357, Start Num: 6

Candidate Starts for Sebata_91:

(Start: 6 @36733 has 150 MA's), (13, 36802), (Start: 14 @36808 has 2 MA's), (19, 36826), (24, 36862), (42, 36970), (45, 36982), (56, 37147), (57, 37153), (67, 37348), (70, 37369), (72, 37390), (73, 37399), (79, 37456), (81, 37498), (83, 37552), (84, 37597), (91, 37666), (93, 37702), (95, 37729), (97, 37756), (101, 37816), (104, 37849), (105, 37852), (109, 37882), (110, 37900), (117, 38041), (122, 38092), (135, 38302), (136, 38308), (140, 38347), (141, 38389), (143, 38401), (145, 38419), (164, 38593), (166, 38602), (167, 38605), (169, 38608), (171, 38620), (175, 38632), (176, 38635), (178, 38650), (195, 38737), (197, 38752), (212, 38896), (213, 38908), (233, 39088), (236, 39106), (245, 39187), (249, 39223), (251, 39244), (255, 39310),

Gene: Settecandela_46 Start: 26549, Stop: 28942, Start Num: 4

Candidate Starts for Settecandela_46:

(Start: 4 @26549 has 2 MA's), (12, 26636), (13, 26660), (18, 26681), (21, 26708), (23, 26717), (28, 26759), (31, 26771), (33, 26786), (45, 26828), (46, 26837), (49, 26873), (52, 26918), (53, 26930), (54, 26954), (59, 27047), (69, 27200), (72, 27233), (73, 27242), (74, 27254), (89, 27473), (92, 27497), (93, 27530), (96, 27560), (97, 27584), (98, 27614), (101, 27644), (103, 27659), (106, 27689), (110, 27728), (111, 27764), (112, 27773), (114, 27860), (117, 27875), (127, 27998), (130, 28043), (137, 28148), (139, 28163), (141, 28223), (142, 28232), (144, 28250), (145, 28253), (147, 28268), (151, 28313), (153, 28331), (156, 28358), (158, 28388), (167, 28409), (169, 28412), (178, 28433), (204, 28457), (205, 28466), (208, 28475), (213, 28511), (217, 28535), (219, 28568), (220, 28580), (237, 28718), (239, 28733), (248, 28796), (249, 28805), (255, 28892), (258, 28928),

Gene: Shaqnato_82 Start: 33972, Stop: 36596, Start Num: 6

Candidate Starts for Shaqnato_82:

(Start: 6 @33972 has 150 MA's), (13, 34041), (Start: 14 @34047 has 2 MA's), (19, 34065), (24, 34101), (42, 34209), (45, 34221), (56, 34386), (57, 34392), (67, 34587), (70, 34608), (72, 34629), (73, 34638), (79, 34695), (81, 34737), (83, 34791), (84, 34836), (91, 34905), (93, 34941), (95, 34968), (97, 34995), (101, 35055), (104, 35088), (105, 35091), (109, 35121), (110, 35139), (117, 35280), (122, 35331), (135, 35541), (136, 35547), (140, 35586), (141, 35628), (143, 35640), (145, 35658), (164, 35832), (166, 35841), (167, 35844), (169, 35847), (171, 35859), (175, 35871), (176, 35874), (178, 35889), (195, 35976), (197, 35991), (212, 36135), (213, 36147), (233, 36327), (236, 36345), (245, 36426), (249, 36462), (251, 36483), (255, 36549),

Gene: Shelob_92 Start: 37235, Stop: 39859, Start Num: 6

Candidate Starts for Shelob_92:

(Start: 6 @37235 has 150 MA's), (13, 37304), (Start: 14 @37310 has 2 MA's), (19, 37328), (24, 37364), (42, 37472), (45, 37484), (56, 37649), (57, 37655), (67, 37850), (70, 37871), (72, 37892), (73, 37901), (79, 37958), (81, 38000), (83, 38054), (84, 38099), (91, 38168), (93, 38204), (95, 38231), (97, 38258), (101, 38318), (104, 38351), (105, 38354), (109, 38384), (110, 38402), (117, 38543), (122, 38594), (135, 38804), (136, 38810), (140, 38849), (141, 38891), (143, 38903), (145, 38921), (164, 39095), (166, 39104), (167, 39107), (169, 39110), (171, 39122), (175, 39134), (176, 39137), (178, 39152), (195, 39239), (197, 39254), (212, 39398), (213, 39410), (233, 39590), (236, 39608), (245, 39689), (249, 39725), (251, 39746), (255, 39812),

Gene: Shifa_79 Start: 33706, Stop: 36309, Start Num: 6

Candidate Starts for Shifa_79:

(Start: 6 @33706 has 150 MA's), (13, 33775), (Start: 14 @33781 has 2 MA's), (19, 33799), (24, 33835), (42, 33943), (45, 33955), (54, 34081), (57, 34126), (67, 34321), (70, 34342), (72, 34363), (73, 34372), (79, 34429), (81, 34471), (83, 34525), (84, 34570), (91, 34639), (93, 34675), (95, 34702), (97, 34729), (101, 34789), (104, 34822), (105, 34825), (110, 34873), (113, 34945), (117, 35014), (122, 35065), (135, 35275), (136, 35281), (137, 35287), (140, 35320), (141, 35362), (143, 35374), (145, 35392), (164, 35566), (166, 35575), (167, 35578), (169, 35581), (171, 35593), (175, 35605), (176, 35608), (178, 35623), (195, 35689), (197, 35704), (212, 35848), (213, 35860), (233, 36040), (236, 36058), (245, 36139), (249, 36175), (251, 36196), (255, 36262),

Gene: Shrimp_90 Start: 36247, Stop: 38871, Start Num: 6

Candidate Starts for Shrimp_90:

(Start: 6 @36247 has 150 MA's), (13, 36316), (Start: 14 @36322 has 2 MA's), (19, 36340), (24, 36376), (42, 36484), (45, 36496), (56, 36661), (57, 36667), (67, 36862), (70, 36883), (72, 36904), (73, 36913), (79, 36970), (81, 37012), (83, 37066), (84, 37111), (91, 37180), (93, 37216), (95, 37243), (97, 37270), (101, 37330), (104, 37363), (105, 37366), (109, 37396), (110, 37414), (117, 37555), (122, 37606), (135, 37816), (136, 37822), (140, 37861), (141, 37903), (143, 37915), (145, 37933), (164, 38107), (166, 38116), (167, 38119), (169, 38122), (171, 38134), (175, 38146), (176, 38149), (178, 38164), (195, 38251), (197, 38266), (212, 38410), (213, 38422), (233, 38602), (236, 38620), (245, 38701), (249, 38737), (251, 38758), (255, 38824),

Gene: SilverDipper_91 Start: 35248, Stop: 37872, Start Num: 6

Candidate Starts for SilverDipper_91:

(Start: 6 @35248 has 150 MA's), (13, 35317), (Start: 14 @35323 has 2 MA's), (19, 35341), (24, 35377), (42, 35485), (45, 35497), (56, 35662), (57, 35668), (67, 35863), (70, 35884), (72, 35905), (73, 35914), (79, 35971), (81, 36013), (83, 36067), (84, 36112), (91, 36181), (93, 36217), (95, 36244), (97, 36271), (101, 36331), (104, 36364), (105, 36367), (109, 36397), (110, 36415), (117, 36556), (122, 36607), (135, 36817), (136, 36823), (140, 36862), (141, 36904), (143, 36916), (145, 36934), (164, 37108), (166, 37117), (167, 37120), (169, 37123), (171, 37135), (175, 37147), (176, 37150), (178, 37165), (195, 37252), (197, 37267), (212, 37411), (213, 37423), (233, 37603), (236, 37621), (245, 37702), (249, 37738), (251, 37759), (255, 37825),

Gene: Skog_151 Start: 66444, Stop: 69053, Start Num: 6

Candidate Starts for Skog_151:

(Start: 6 @66444 has 150 MA's), (Start: 9 @66462 has 1 MA's), (21, 66561), (27, 66600), (45, 66657), (48, 66687), (59, 66876), (61, 66903), (67, 67023), (69, 67032), (70, 67044), (71, 67050), (72, 67065), (73, 67074), (74, 67086), (84, 67272), (91, 67341), (93, 67377), (94, 67401), (99, 67479), (101, 67491), (110, 67575), (112, 67620), (115, 67704), (116, 67713), (117, 67716), (135, 67977), (136, 67983), (141, 68064), (142, 68073), (143, 68076), (145, 68094), (148, 68112), (154, 68187), (155, 68205), (160, 68247), (163, 68262), (167, 68271), (173, 68289), (174, 68295), (175, 68298), (188, 68352), (190, 68367), (201, 68463), (202, 68466), (210, 68544), (216, 68589), (219, 68628), (221, 68652), (223, 68667), (226, 68685), (228, 68724), (230, 68742), (236, 68805), (237, 68817), (243, 68868), (249, 68913), (253, 68994), (255, 69006), (257, 69027),

Gene: SmallFry_90 Start: 35199, Stop: 37823, Start Num: 6

Candidate Starts for SmallFry_90:

(Start: 6 @35199 has 150 MA's), (13, 35268), (Start: 14 @35274 has 2 MA's), (19, 35292), (24, 35328), (42, 35436), (45, 35448), (56, 35613), (57, 35619), (67, 35814), (70, 35835), (72, 35856), (73, 35865), (79, 35922), (81, 35964), (83, 36018), (84, 36063), (91, 36132), (93, 36168), (95, 36195), (97, 36222), (101, 36282), (102, 36294), (104, 36315), (105, 36318), (109, 36348), (110, 36366), (117, 36507), (122, 36558), (135, 36768), (136, 36774), (140, 36813), (141, 36855), (143, 36867), (145, 36885), (164, 37059), (166, 37068), (167, 37071), (169, 37074), (171, 37086), (175, 37098), (176, 37101), (178, 37116), (195, 37203), (197, 37218), (212, 37362), (213, 37374), (233, 37554), (236, 37572), (245, 37653), (249, 37689), (251, 37710), (255, 37776),

Gene: Specks_96 Start: 37983, Stop: 40607, Start Num: 6

Candidate Starts for Specks_96:

(Start: 6 @37983 has 150 MA's), (13, 38052), (Start: 14 @38058 has 2 MA's), (19, 38076), (24, 38112), (42, 38220), (45, 38232), (56, 38397), (57, 38403), (67, 38598), (70, 38619), (72, 38640), (73, 38649), (79, 38706), (81, 38748), (83, 38802), (84, 38847), (91, 38916), (93, 38952), (95, 38979), (97, 39006), (101, 39066), (102, 39078), (104, 39099), (105, 39102), (109, 39132), (110, 39150), (117, 39291), (122, 39342), (135, 39552), (136, 39558), (140, 39597), (141, 39639), (143, 39651), (145, 39669), (164, 39843), (166, 39852), (167, 39855), (169, 39858), (171, 39870), (175, 39882), (176, 39885), (178, 39900), (195, 39987), (197, 40002), (212, 40146), (213, 40158), (233, 40338), (236, 40356), (245, 40437), (249, 40473), (251, 40494), (255, 40560),

Gene: Sprinklers_85 Start: 34469, Stop: 37093, Start Num: 6

Candidate Starts for Sprinklers_85:

(Start: 6 @34469 has 150 MA's), (13, 34538), (Start: 14 @34544 has 2 MA's), (19, 34562), (24, 34598), (42, 34706), (45, 34718), (56, 34883), (57, 34889), (67, 35084), (70, 35105), (72, 35126), (73, 35135), (79, 35192), (81, 35234), (83, 35288), (84, 35333), (91, 35402), (93, 35438), (95, 35465), (97, 35492), (101, 35552), (104, 35585), (105, 35588), (109, 35618), (110, 35636), (117, 35777), (122, 35828), (135, 36038), (136, 36044), (140, 36083), (141, 36125), (143, 36137), (145, 36155), (164, 36329), (166, 36338), (167, 36341), (169, 36344), (171, 36356), (175, 36368), (176, 36371), (178, 36386), (195, 36473), (197, 36488), (212, 36632), (213, 36644), (233, 36824), (236, 36842), (245, 36923), (249, 36959), (251, 36980), (255, 37046),

Gene: Spud_90 Start: 36211, Stop: 38814, Start Num: 6

Candidate Starts for Spud_90:

(Start: 6 @36211 has 150 MA's), (13, 36280), (Start: 14 @36286 has 2 MA's), (19, 36304), (24, 36340), (42, 36448), (45, 36460), (56, 36625), (57, 36631), (67, 36826), (70, 36847), (72, 36868), (73, 36877), (79, 36934), (81, 36976), (83, 37030), (84, 37075), (91, 37144), (93, 37180), (95, 37207), (97, 37234), (101, 37294), (104, 37327), (105, 37330), (108, 37351), (110, 37378), (113, 37450), (117, 37519), (122, 37570), (135, 37780), (136, 37786), (137, 37792), (140, 37825), (141, 37867), (143,

37879), (145, 37897), (164, 38071), (166, 38080), (167, 38083), (169, 38086), (171, 38098), (175, 38110), (176, 38113), (178, 38128), (195, 38194), (197, 38209), (212, 38353), (213, 38365), (233, 38545), (236, 38563), (245, 38644), (249, 38680), (251, 38701), (255, 38767),

Gene: SrishMeg2525_89 Start: 35579, Stop: 38203, Start Num: 6

Candidate Starts for SrishMeg2525_89:

(Start: 6 @35579 has 150 MA's), (13, 35648), (Start: 14 @35654 has 2 MA's), (19, 35672), (24, 35708), (42, 35816), (45, 35828), (56, 35993), (57, 35999), (67, 36194), (70, 36215), (72, 36236), (73, 36245), (79, 36302), (81, 36344), (83, 36398), (84, 36443), (91, 36512), (93, 36548), (95, 36575), (97, 36602), (101, 36662), (104, 36695), (105, 36698), (109, 36728), (110, 36746), (117, 36887), (122, 36938), (135, 37148), (136, 37154), (140, 37193), (141, 37235), (143, 37247), (145, 37265), (164, 37439), (166, 37448), (167, 37451), (169, 37454), (171, 37466), (175, 37478), (176, 37481), (178, 37496), (195, 37583), (197, 37598), (212, 37742), (213, 37754), (233, 37934), (236, 37952), (245, 38033), (249, 38069), (251, 38090), (255, 38156),

Gene: StephanieG_89 Start: 37059, Stop: 39683, Start Num: 6

Candidate Starts for StephanieG_89:

(Start: 6 @37059 has 150 MA's), (13, 37128), (Start: 14 @37134 has 2 MA's), (19, 37152), (24, 37188), (42, 37296), (45, 37308), (56, 37473), (57, 37479), (67, 37674), (70, 37695), (72, 37716), (73, 37725), (79, 37782), (81, 37824), (83, 37878), (84, 37923), (91, 37992), (93, 38028), (95, 38055), (97, 38082), (101, 38142), (104, 38175), (105, 38178), (109, 38208), (110, 38226), (117, 38367), (122, 38418), (135, 38628), (136, 38634), (137, 38640), (140, 38673), (141, 38715), (143, 38727), (145, 38745), (164, 38919), (166, 38928), (167, 38931), (169, 38934), (171, 38946), (175, 38958), (176, 38961), (178, 38976), (195, 39063), (197, 39078), (212, 39222), (213, 39234), (233, 39414), (236, 39432), (245, 39513), (249, 39549), (251, 39570), (255, 39636),

Gene: Stormageddon_11 Start: 9594, Stop: 12167, Start Num: 10

Candidate Starts for Stormageddon_11:

(8, 9585), (Start: 10 @9594 has 3 MA's), (26, 9702), (36, 9765), (40, 9783), (44, 9810), (46, 9825), (47, 9837), (57, 9987), (59, 10035), (60, 10041), (66, 10143), (70, 10197), (72, 10218), (74, 10239), (80, 10302), (85, 10416), (86, 10425), (91, 10482), (92, 10485), (93, 10518), (100, 10629), (101, 10632), (104, 10665), (109, 10698), (110, 10716), (112, 10761), (116, 10854), (117, 10857), (119, 10878), (120, 10890), (126, 10971), (128, 10983), (136, 11124), (145, 11235), (181, 11451), (225, 11772), (235, 11886), (237, 11907), (249, 12021), (250, 12033), (252, 12042), (254, 12108), (255, 12117),

Gene: Stubby_83 Start: 34297, Stop: 36900, Start Num: 6

Candidate Starts for Stubby_83:

(Start: 6 @34297 has 150 MA's), (13, 34366), (Start: 14 @34372 has 2 MA's), (19, 34390), (24, 34426), (42, 34534), (45, 34546), (56, 34711), (57, 34717), (67, 34912), (70, 34933), (72, 34954), (73, 34963), (79, 35020), (81, 35062), (83, 35116), (84, 35161), (91, 35230), (93, 35266), (95, 35293), (97, 35320), (101, 35380), (104, 35413), (105, 35416), (108, 35437), (110, 35464), (113, 35536), (117, 35605), (122, 35656), (135, 35866), (136, 35872), (137, 35878), (140, 35911), (141, 35953), (143, 35965), (145, 35983), (164, 36157), (166, 36166), (167, 36169), (169, 36172), (171, 36184), (175, 36196), (176, 36199), (178, 36214), (195, 36280), (197, 36295), (212, 36439), (213, 36451), (233, 36631), (236, 36649), (245, 36730), (249, 36766), (251, 36787), (255, 36853),

Gene: StubbySaigey_92 Start: 34536, Stop: 37160, Start Num: 6

Candidate Starts for StubbySaigey_92:

(Start: 6 @34536 has 150 MA's), (13, 34605), (Start: 14 @34611 has 2 MA's), (19, 34629), (24, 34665), (42, 34773), (45, 34785), (56, 34950), (57, 34956), (67, 35151), (70, 35172), (72, 35193), (73, 35202), (79, 35259), (81, 35301), (83, 35355), (84, 35400), (91, 35469), (93, 35505), (95, 35532), (97, 35559), (101, 35619), (104, 35652), (105, 35655), (108, 35676), (110, 35703), (113, 35775), (117, 35844), (122, 35895), (135, 36105), (136, 36111), (137, 36117), (140, 36150), (141, 36192), (143,

36204), (145, 36222), (164, 36396), (166, 36405), (167, 36408), (169, 36411), (171, 36423), (175, 36435), (176, 36438), (178, 36453), (195, 36540), (197, 36555), (212, 36699), (213, 36711), (233, 36891), (236, 36909), (245, 36990), (249, 37026), (251, 37047), (255, 37113),

Gene: Tainan_95 Start: 37633, Stop: 40257, Start Num: 6

Candidate Starts for Tainan_95:

(Start: 6 @37633 has 150 MA's), (13, 37702), (Start: 14 @37708 has 2 MA's), (19, 37726), (24, 37762), (42, 37870), (45, 37882), (56, 38047), (57, 38053), (67, 38248), (70, 38269), (72, 38290), (73, 38299), (79, 38356), (81, 38398), (83, 38452), (84, 38497), (91, 38566), (93, 38602), (95, 38629), (97, 38656), (101, 38716), (104, 38749), (105, 38752), (109, 38782), (110, 38800), (117, 38941), (122, 38992), (135, 39202), (136, 39208), (140, 39247), (141, 39289), (143, 39301), (145, 39319), (164, 39493), (166, 39502), (167, 39505), (169, 39508), (171, 39520), (175, 39532), (176, 39535), (178, 39550), (195, 39637), (197, 39652), (212, 39796), (213, 39808), (233, 39988), (236, 40006), (245, 40087), (249, 40123), (251, 40144), (255, 40210),

Gene: Teardrop_90 Start: 35307, Stop: 37931, Start Num: 6

Candidate Starts for Teardrop_90:

(Start: 6 @35307 has 150 MA's), (13, 35376), (Start: 14 @35382 has 2 MA's), (19, 35400), (24, 35436), (42, 35544), (45, 35556), (56, 35721), (57, 35727), (67, 35922), (70, 35943), (72, 35964), (73, 35973), (79, 36030), (81, 36072), (83, 36126), (84, 36171), (91, 36240), (93, 36276), (95, 36303), (97, 36330), (101, 36390), (102, 36402), (104, 36423), (105, 36426), (109, 36456), (110, 36474), (117, 36615), (122, 36666), (135, 36876), (136, 36882), (140, 36921), (141, 36963), (143, 36975), (145, 36993), (164, 37167), (166, 37176), (167, 37179), (169, 37182), (171, 37194), (175, 37206), (176, 37209), (178, 37224), (195, 37311), (197, 37326), (212, 37470), (213, 37482), (233, 37662), (236, 37680), (245, 37761), (249, 37797), (251, 37818), (255, 37884),

Gene: TinyTim_90 Start: 36243, Stop: 38867, Start Num: 6

Candidate Starts for TinyTim_90:

(Start: 6 @36243 has 150 MA's), (13, 36312), (Start: 14 @36318 has 2 MA's), (19, 36336), (24, 36372), (42, 36480), (45, 36492), (56, 36657), (57, 36663), (67, 36858), (70, 36879), (72, 36900), (73, 36909), (79, 36966), (81, 37008), (83, 37062), (84, 37107), (91, 37176), (93, 37212), (95, 37239), (97, 37266), (101, 37326), (104, 37359), (105, 37362), (109, 37392), (110, 37410), (117, 37551), (122, 37602), (135, 37812), (136, 37818), (140, 37857), (141, 37899), (143, 37911), (145, 37929), (164, 38103), (166, 38112), (167, 38115), (169, 38118), (171, 38130), (175, 38142), (176, 38145), (178, 38160), (195, 38247), (197, 38262), (212, 38406), (213, 38418), (233, 38598), (236, 38616), (245, 38697), (249, 38733), (251, 38754), (255, 38820),

Gene: Tonenili_104 Start: 40235, Stop: 42874, Start Num: 6

Candidate Starts for Tonenili_104:

(Start: 6 @40235 has 150 MA's), (13, 40304), (Start: 14 @40310 has 2 MA's), (24, 40364), (38, 40457), (42, 40487), (45, 40499), (47, 40520), (56, 40664), (57, 40670), (64, 40796), (67, 40865), (69, 40874), (73, 40916), (79, 40973), (81, 41015), (83, 41069), (84, 41114), (89, 41162), (91, 41183), (93, 41219), (95, 41246), (97, 41273), (99, 41321), (101, 41333), (104, 41366), (105, 41369), (108, 41390), (110, 41417), (113, 41489), (117, 41558), (122, 41609), (135, 41819), (136, 41825), (137, 41831), (140, 41864), (141, 41906), (143, 41918), (145, 41936), (164, 42110), (167, 42122), (171, 42137), (176, 42152), (178, 42167), (186, 42203), (195, 42257), (197, 42272), (212, 42416), (213, 42428), (236, 42623), (249, 42740), (251, 42761), (255, 42827),

Gene: Tortoise16_88 Start: 36101, Stop: 38725, Start Num: 6

Candidate Starts for Tortoise16_88:

(Start: 6 @36101 has 150 MA's), (13, 36170), (Start: 14 @36176 has 2 MA's), (19, 36194), (24, 36230), (42, 36338), (45, 36350), (56, 36515), (57, 36521), (67, 36716), (70, 36737), (72, 36758), (73, 36767), (79, 36824), (81, 36866), (83, 36920), (84, 36965), (91, 37034), (93, 37070), (95, 37097), (97,

37124), (101, 37184), (104, 37217), (105, 37220), (109, 37250), (110, 37268), (117, 37409), (122, 37460), (135, 37670), (136, 37676), (140, 37715), (141, 37757), (143, 37769), (145, 37787), (164, 37961), (166, 37970), (167, 37973), (169, 37976), (171, 37988), (175, 38000), (176, 38003), (178, 38018), (195, 38105), (197, 38120), (212, 38264), (213, 38276), (233, 38456), (236, 38474), (245, 38555), (249, 38591), (251, 38612), (255, 38678),

Gene: Trinitium_86 Start: 34296, Stop: 36899, Start Num: 6

Candidate Starts for Trinitium_86:

(Start: 6 @34296 has 150 MA's), (13, 34365), (Start: 14 @34371 has 2 MA's), (19, 34389), (24, 34425), (42, 34533), (45, 34545), (56, 34710), (57, 34716), (67, 34911), (70, 34932), (72, 34953), (73, 34962), (79, 35019), (81, 35061), (83, 35115), (84, 35160), (91, 35229), (93, 35265), (95, 35292), (97, 35319), (101, 35379), (104, 35412), (105, 35415), (108, 35436), (110, 35463), (113, 35535), (117, 35604), (122, 35655), (135, 35865), (136, 35871), (137, 35877), (140, 35910), (141, 35952), (143, 35964), (145, 35982), (164, 36156), (166, 36165), (167, 36168), (169, 36171), (171, 36183), (175, 36195), (176, 36198), (178, 36213), (195, 36279), (197, 36294), (212, 36438), (213, 36450), (233, 36630), (236, 36648), (245, 36729), (249, 36765), (251, 36786), (255, 36852),

Gene: Turret_85 Start: 33962, Stop: 36565, Start Num: 6

Candidate Starts for Turret_85:

(Start: 6 @33962 has 150 MA's), (13, 34031), (Start: 14 @34037 has 2 MA's), (19, 34055), (24, 34091), (42, 34199), (45, 34211), (56, 34376), (57, 34382), (67, 34577), (70, 34598), (72, 34619), (73, 34628), (79, 34685), (81, 34727), (83, 34781), (84, 34826), (91, 34895), (93, 34931), (95, 34958), (97, 34985), (101, 35045), (104, 35078), (105, 35081), (108, 35102), (110, 35129), (113, 35201), (117, 35270), (122, 35321), (135, 35531), (136, 35537), (137, 35543), (140, 35576), (141, 35618), (143, 35630), (145, 35648), (164, 35822), (166, 35831), (167, 35834), (169, 35837), (171, 35849), (175, 35861), (176, 35864), (178, 35879), (195, 35945), (197, 35960), (212, 36104), (213, 36116), (233, 36296), (236, 36314), (245, 36395), (249, 36431), (251, 36452), (255, 36518),

Gene: ValleyTerrace_90 Start: 35248, Stop: 37872, Start Num: 6

Candidate Starts for ValleyTerrace_90:

(Start: 6 @35248 has 150 MA's), (13, 35317), (Start: 14 @35323 has 2 MA's), (19, 35341), (24, 35377), (42, 35485), (45, 35497), (56, 35662), (57, 35668), (67, 35863), (70, 35884), (72, 35905), (73, 35914), (79, 35971), (81, 36013), (83, 36067), (84, 36112), (91, 36181), (93, 36217), (95, 36244), (97, 36271), (101, 36331), (104, 36364), (105, 36367), (109, 36397), (110, 36415), (117, 36556), (122, 36607), (135, 36817), (136, 36823), (140, 36862), (141, 36904), (143, 36916), (145, 36934), (164, 37108), (166, 37117), (167, 37120), (169, 37123), (171, 37135), (175, 37147), (176, 37150), (178, 37165), (195, 37252), (197, 37267), (212, 37411), (213, 37423), (233, 37603), (236, 37621), (245, 37702), (249, 37738), (251, 37759), (255, 37825),

Gene: Wally_89 Start: 34798, Stop: 37422, Start Num: 6

Candidate Starts for Wally_89:

(Start: 6 @34798 has 150 MA's), (13, 34867), (Start: 14 @34873 has 2 MA's), (19, 34891), (24, 34927), (42, 35035), (45, 35047), (56, 35212), (57, 35218), (67, 35413), (70, 35434), (72, 35455), (73, 35464), (79, 35521), (81, 35563), (83, 35617), (84, 35662), (91, 35731), (93, 35767), (95, 35794), (97, 35821), (101, 35881), (104, 35914), (105, 35917), (108, 35938), (110, 35965), (113, 36037), (117, 36106), (122, 36157), (135, 36367), (136, 36373), (140, 36412), (141, 36454), (143, 36466), (145, 36484), (164, 36658), (166, 36667), (167, 36670), (169, 36673), (171, 36685), (175, 36697), (176, 36700), (178, 36715), (195, 36802), (197, 36817), (212, 36961), (213, 36973), (233, 37153), (236, 37171), (245, 37252), (249, 37288), (251, 37309), (255, 37375),

Gene: Willis_91 Start: 36138, Stop: 38762, Start Num: 6

Candidate Starts for Willis_91:

(Start: 6 @36138 has 150 MA's), (13, 36207), (Start: 14 @36213 has 2 MA's), (19, 36231), (24, 36267), (42, 36375), (45, 36387), (56, 36552), (57, 36558), (67, 36753), (70, 36774), (72, 36795), (73, 36804), (79, 36861), (81, 36903), (83, 36957), (84, 37002), (91, 37071), (93, 37107), (95, 37134), (97, 37161), (101, 37221), (104, 37254), (105, 37257), (109, 37287), (110, 37305), (117, 37446), (122, 37497), (135, 37707), (136, 37713), (140, 37752), (141, 37794), (143, 37806), (145, 37824), (164, 37998), (166, 38007), (167, 38010), (169, 38013), (171, 38025), (175, 38037), (176, 38040), (178, 38055), (195, 38142), (197, 38157), (212, 38301), (213, 38313), (233, 38493), (236, 38511), (245, 38592), (249, 38628), (251, 38649), (255, 38715),

Gene: Yassified_86 Start: 34529, Stop: 37132, Start Num: 6

Candidate Starts for Yassified_86:

(Start: 6 @34529 has 150 MA's), (13, 34598), (Start: 14 @34604 has 2 MA's), (19, 34622), (24, 34658), (42, 34766), (45, 34778), (56, 34943), (57, 34949), (67, 35144), (70, 35165), (72, 35186), (73, 35195), (79, 35252), (81, 35294), (83, 35348), (84, 35393), (91, 35462), (93, 35498), (95, 35525), (97, 35552), (101, 35612), (104, 35645), (105, 35648), (109, 35678), (110, 35696), (117, 35837), (122, 35888), (135, 36098), (136, 36104), (140, 36143), (141, 36185), (143, 36197), (145, 36215), (164, 36389), (166, 36398), (167, 36401), (169, 36404), (171, 36416), (175, 36428), (176, 36431), (178, 36446), (195, 36512), (197, 36527), (212, 36671), (213, 36683), (233, 36863), (236, 36881), (245, 36962), (249, 36998), (251, 37019), (255, 37085),

Gene: YemiJoy2021_91 Start: 36240, Stop: 38864, Start Num: 6

Candidate Starts for YemiJoy2021_91:

(Start: 6 @36240 has 150 MA's), (13, 36309), (Start: 14 @36315 has 2 MA's), (19, 36333), (24, 36369), (42, 36477), (45, 36489), (56, 36654), (57, 36660), (67, 36855), (70, 36876), (72, 36897), (73, 36906), (79, 36963), (81, 37005), (83, 37059), (84, 37104), (91, 37173), (93, 37209), (95, 37236), (97, 37263), (101, 37323), (104, 37356), (105, 37359), (109, 37389), (110, 37407), (117, 37548), (122, 37599), (135, 37809), (136, 37815), (140, 37854), (141, 37896), (143, 37908), (145, 37926), (164, 38100), (166, 38109), (167, 38112), (169, 38115), (171, 38127), (175, 38139), (176, 38142), (178, 38157), (195, 38244), (197, 38259), (212, 38403), (213, 38415), (233, 38595), (236, 38613), (245, 38694), (249, 38730), (251, 38751), (255, 38817),

Gene: YoungMoneyMata_90 Start: 34999, Stop: 37623, Start Num: 6

Candidate Starts for YoungMoneyMata_90:

(Start: 6 @34999 has 150 MA's), (13, 35068), (Start: 14 @35074 has 2 MA's), (19, 35092), (24, 35128), (42, 35236), (45, 35248), (56, 35413), (57, 35419), (67, 35614), (70, 35635), (72, 35656), (73, 35665), (79, 35722), (81, 35764), (83, 35818), (84, 35863), (91, 35932), (93, 35968), (95, 35995), (97, 36022), (101, 36082), (104, 36115), (105, 36118), (109, 36148), (110, 36166), (117, 36307), (122, 36358), (135, 36568), (136, 36574), (140, 36613), (141, 36655), (143, 36667), (145, 36685), (164, 36859), (166, 36868), (167, 36871), (169, 36874), (171, 36886), (175, 36898), (176, 36901), (178, 36916), (195, 37003), (197, 37018), (212, 37162), (213, 37174), (233, 37354), (236, 37372), (245, 37453), (249, 37489), (251, 37510), (255, 37576),

Gene: Yucca_90 Start: 36162, Stop: 38786, Start Num: 6

Candidate Starts for Yucca_90:

(Start: 6 @36162 has 150 MA's), (13, 36231), (Start: 14 @36237 has 2 MA's), (19, 36255), (24, 36291), (42, 36399), (45, 36411), (56, 36576), (57, 36582), (67, 36777), (70, 36798), (72, 36819), (73, 36828), (79, 36885), (81, 36927), (83, 36981), (84, 37026), (91, 37095), (93, 37131), (95, 37158), (97, 37185), (101, 37245), (104, 37278), (105, 37281), (109, 37311), (110, 37329), (117, 37470), (122, 37521), (135, 37731), (136, 37737), (140, 37776), (141, 37818), (143, 37830), (145, 37848), (164, 38022), (166, 38031), (167, 38034), (169, 38037), (171, 38049), (175, 38061), (176, 38064), (178, 38079), (195, 38166), (197, 38181), (212, 38325), (213, 38337), (233, 38517), (236, 38535), (245, 38616), (249, 38652), (251, 38673), (255, 38739),

Gene: Zalkecks_91 Start: 35928, Stop: 38552, Start Num: 6

Candidate Starts for Zalkecks_91:

(Start: 6 @35928 has 150 MA's), (13, 35997), (Start: 14 @36003 has 2 MA's), (19, 36021), (24, 36057), (42, 36165), (45, 36177), (56, 36342), (57, 36348), (67, 36543), (70, 36564), (72, 36585), (73, 36594), (79, 36651), (81, 36693), (83, 36747), (84, 36792), (91, 36861), (93, 36897), (95, 36924), (97, 36951), (101, 37011), (104, 37044), (105, 37047), (109, 37077), (110, 37095), (117, 37236), (122, 37287), (135, 37497), (136, 37503), (140, 37542), (141, 37584), (143, 37596), (145, 37614), (164, 37788), (166, 37797), (167, 37800), (169, 37803), (171, 37815), (175, 37827), (176, 37830), (178, 37845), (195, 37932), (197, 37947), (212, 38091), (213, 38103), (233, 38283), (236, 38301), (245, 38382), (249, 38418), (251, 38439), (255, 38505),

Gene: Zeenon_92 Start: 35855, Stop: 38479, Start Num: 6

Candidate Starts for Zeenon_92:

(Start: 6 @35855 has 150 MA's), (13, 35924), (Start: 14 @35930 has 2 MA's), (19, 35948), (24, 35984), (42, 36092), (45, 36104), (56, 36269), (57, 36275), (67, 36470), (70, 36491), (72, 36512), (73, 36521), (79, 36578), (81, 36620), (83, 36674), (84, 36719), (91, 36788), (93, 36824), (95, 36851), (97, 36878), (101, 36938), (104, 36971), (105, 36974), (109, 37004), (110, 37022), (117, 37163), (122, 37214), (135, 37424), (136, 37430), (140, 37469), (141, 37511), (143, 37523), (145, 37541), (164, 37715), (166, 37724), (167, 37727), (169, 37730), (171, 37742), (175, 37754), (176, 37757), (178, 37772), (195, 37859), (197, 37874), (212, 38018), (213, 38030), (233, 38210), (236, 38228), (245, 38309), (249, 38345), (251, 38366), (255, 38432),

Gene: ZygoTaiga_89 Start: 36244, Stop: 38868, Start Num: 6

Candidate Starts for ZygoTaiga_89:

(Start: 6 @36244 has 150 MA's), (13, 36313), (Start: 14 @36319 has 2 MA's), (19, 36337), (24, 36373), (42, 36481), (45, 36493), (56, 36658), (57, 36664), (67, 36859), (70, 36880), (72, 36901), (73, 36910), (79, 36967), (81, 37009), (83, 37063), (84, 37108), (91, 37177), (93, 37213), (95, 37240), (97, 37267), (101, 37327), (104, 37360), (105, 37363), (109, 37393), (110, 37411), (117, 37552), (122, 37603), (135, 37813), (136, 37819), (140, 37858), (141, 37900), (143, 37912), (145, 37930), (164, 38104), (166, 38113), (167, 38116), (169, 38119), (171, 38131), (175, 38143), (176, 38146), (178, 38161), (195, 38248), (197, 38263), (212, 38407), (213, 38419), (233, 38599), (236, 38617), (245, 38698), (249, 38734), (251, 38755), (255, 38821),