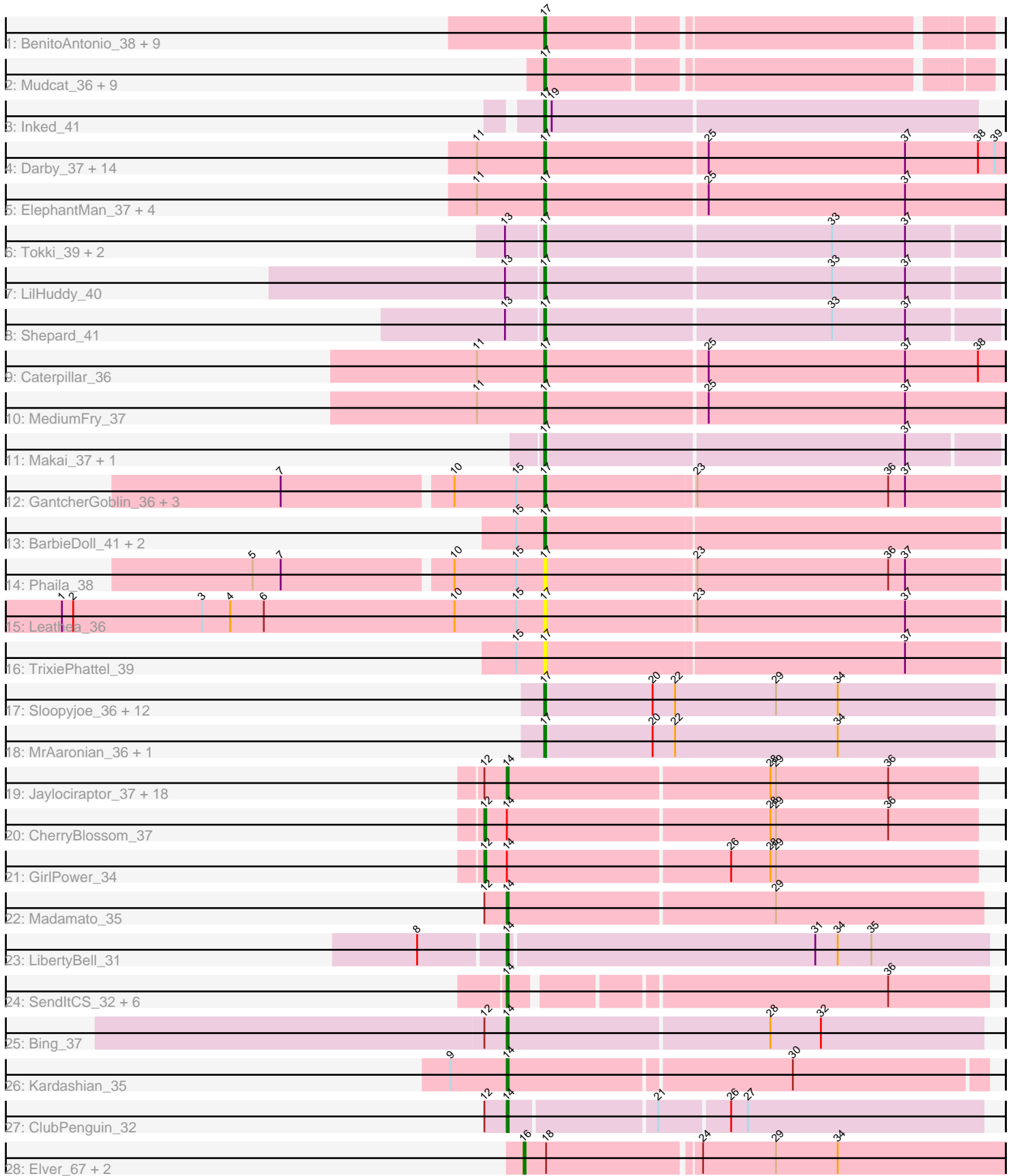


Pham 195485



Note: Tracks are now grouped by subcluster and scaled. Switching in subcluster is indicated by changes in track color. Track scale is now set by default to display the region 30 bp upstream of start 1 to 30 bp downstream of the last possible start. If this default region is judged to be packed too tightly with annotated starts, the track will be further scaled to only show that region of the ORF with annotated starts. This action will be indicated by adding "Zoomed" to the title. For starts, yellow indicates the location of called starts comprised solely of Glimmer/GeneMark auto-annotations, green indicates the location of called starts with at least 1 manual gene annotation.

Pham 195485 Report

This analysis was run 12/09/24 on database version 580.

Pham number 195485 has 111 members, 13 are drafts.

Phages represented in each track:

- Track 1 : BenitoAntonio_38, Mooshroom_40, Circum_39, GoCrazy_36, Benllo_37, Hankly_37, KeaneyLin_36, Dynamite_38, Kardesai_39, NapoleonB_38
- Track 2 : Mudcat_36, Xenomorph_34, Arcadia_37, Nason_37, Correa_35, Cheesy_37, Heisenberger_37, JEGGS_37, Elsa_37, Tribby_37
- Track 3 : Inked_41
- Track 4 : Darby_37, Nivinsha_39, Trustiboi_39, AreFloNak_38, Breylor17_39, CapnMurica_37, MiniBagel_37, Issa_39, Gordon_37, DevitoJr_38, ScienceWizSam_40, Nightmare_39, CastorTray_40, Synopsis_37, Tenno_38
- Track 5 : ElephantMan_37, Brunswick_38, Tatanka_37, Niktson_37, Teacup_39
- Track 6 : Tokki_39, Giantsbane_40, Phaby_40
- Track 7 : LilHuddy_40
- Track 8 : Shepard_41
- Track 9 : Caterpillar_36
- Track 10 : MediumFry_37
- Track 11 : Makai_37, Truckee_36
- Track 12 : GantcherGoblin_36, Argan_36, Zeina_38, Uzumaki_36
- Track 13 : BarbieDoll_41, Renaldo_42, Lewando_40
- Track 14 : Phaila_38
- Track 15 : Leathea_36
- Track 16 : TrixiePhattel_39
- Track 17 : Sloopyjoe_36, ProfFrink_36, StarLord_36, Shiba_36, Salk_36, Egad_36, Stayer_36, BronxBay_36, DoctorPepper_36, Linda_36, Raunak_37, Michelle_36, Sporto_38
- Track 18 : MrAaronian_36, Djungelskog_36
- Track 19 : Jaylociraptor_37, Hoshi_37, TaidaOne_37, TonyStarch_36, Maya_37, Meibysrarus_36, Namu_37, FidgetOrca_37, Rima_37, Spectropatronm_37, Esketit_37, FrodoSwaggins_37, IceWarrior_36, Popy_37, Indigenous_37, Soshi_36, OlympicHelado_37, DrGrey_36, TieDye_36
- Track 20 : CherryBlossom_37
- Track 21 : GirlPower_34
- Track 22 : Madamoto_35
- Track 23 : LibertyBell_31
- Track 24 : SendItCS_32, Thiqqums_34, Miek_33, CricKo_34, FromIndy_34, Rainydai_34, Regigigas_35
- Track 25 : Bing_37
- Track 26 : Kardashian_35
- Track 27 : ClubPenguin_32

- Track 28 : Elver_67, Qui_70, Paella_70

Summary of Final Annotations (See graph section above for start numbers):

The start number called the most often in the published annotations is 17, it was called in 65 of the 98 non-draft genes in the pham.

Genes that call this "Most Annotated" start:

- Arcadia_37, AreFloNak_38, Argan_36, BarbieDoll_41, BenitoAntonio_38, Benllo_37, Breylor17_39, BronxBay_36, Brunswick_38, CapnMurica_37, CastorTray_40, Caterpillar_36, Cheesy_37, Circum_39, Correa_35, Darby_37, DevitoJr_38, Djungelskog_36, DoctorPepper_36, Dynamite_38, Egad_36, ElephantMan_37, Elsa_37, GantcherGoblin_36, Giantsbane_40, GoCrazy_36, Gordon_37, Hankly_37, Heisenberger_37, Inked_41, Issa_39, JEGGS_37, Kardesai_39, KeaneyLin_36, Leatheia_36, Lewando_40, LilHuddy_40, Linda_36, Makai_37, MediumFry_37, Michelle_36, MiniBagel_37, Mooshroom_40, MrAaronian_36, Mudcat_36, NapoleonB_38, Nason_37, Nightmare_39, Niktson_37, Nivinsha_39, Phaby_40, Phaila_38, ProfFrink_36, Raunak_37, Renaldo_42, Salk_36, ScienceWizSam_40, Shepard_41, Shiba_36, Sloopyjoe_36, Sporto_38, StarLord_36, Stayer_36, Synopsis_37, Tatanka_37, Teacup_39, Tenno_38, Tokki_39, Tribby_37, TrixiePhattel_39, Truckee_36, Trustiboi_39, Uzumaki_36, Xenomorph_34, Zeina_38,

Genes that have the "Most Annotated" start but do not call it:

-

Genes that do not have the "Most Annotated" start:

- Bing_37, CherryBlossom_37, ClubPenguin_32, CricKo_34, DrGrey_36, Elver_67, Esketit_37, FidgetOrca_37, FrodoSwaggins_37, FromIndy_34, GirlPower_34, Hoshi_37, IceWarrior_36, Indigenous_37, Jaylociraptor_37, Kardashian_35, LibertyBell_31, Madamoto_35, Maya_37, Meibysrarus_36, Miek_33, Namu_37, OlympicHelado_37, Paella_70, Popy_37, Qui_70, Rainydai_34, Regigigas_35, Rima_37, SendItCS_32, Soshi_36, Spectropatronm_37, TaidaOne_37, Thiqqums_34, TieDye_36, TonyStarch_36,

Summary by start number:

Start 12:

- Found in 24 of 111 (21.6%) of genes in pham
- Manual Annotations of this start: 2 of 98
- Called 8.3% of time when present
- Phage (with cluster) where this start called: CherryBlossom_37 (B11), GirlPower_34 (B1),

Start 14:

- Found in 33 of 111 (29.7%) of genes in pham
- Manual Annotations of this start: 29 of 98
- Called 93.9% of time when present
- Phage (with cluster) where this start called: Bing_37 (B15), ClubPenguin_32 (B17), CricKo_34 (B14), DrGrey_36 (B11), Esketit_37 (B11), FidgetOrca_37 (B11), FrodoSwaggins_37 (B11), FromIndy_34 (B14), Hoshi_37 (B11), IceWarrior_36 (B11),

Indigenous_37 (BI1), Jaylociraptor_37 (BI1), Kardashian_35 (BI6), LibertyBell_31 (BI3), Madamato_35 (BI1), Maya_37 (BI1), Meibysrarus_36 (BI1), Miek_33 (BI4), Namu_37 (BI1), OlympicHelado_37 (BI1), Popy_37 (BI1), Rainydai_34 (BI4), Regigigas_35 (BI4), Rima_37 (BI1), SendItCS_32 (BI4), Soshi_36 (BI1), Spectropatronm_37 (BI1), TaidaOne_37 (BI1), Thiqqums_34 (BI4), TieDye_36 (BI1), TonyStarch_36 (BI1),

Start 16:

- Found in 3 of 111 (2.7%) of genes in pham
- Manual Annotations of this start: 2 of 98
- Called 100.0% of time when present
- Phage (with cluster) where this start called: Elver_67 (FK), Paella_70 (FK), Qui_70 (FK),

Start 17:

- Found in 75 of 111 (67.6%) of genes in pham
- Manual Annotations of this start: 65 of 98
- Called 100.0% of time when present
- Phage (with cluster) where this start called: Arcadia_37 (AM), AreFloNak_38 (AU1), Argan_36 (AU6), BarbieDoll_41 (AU6), BenitoAntonio_38 (AM), Benllo_37 (AM), Breylor17_39 (AU1), BronxBay_36 (AW), Brunswick_38 (AU1), CapnMurica_37 (AU1), CastorTray_40 (AU1), Caterpillar_36 (AU4), Cheesy_37 (AM), Circum_39 (AM), Correa_35 (AM), Darby_37 (AU1), DevitoJr_38 (AU1), Djungelskog_36 (AW), DoctorPepper_36 (AW), Dynamite_38 (AM), Egad_36 (AW), ElephantMan_37 (AU1), Elsa_37 (AM), GantcherGoblin_36 (AU6), Giantsbane_40 (AU2), GoCrazy_36 (AM), Gordon_37 (AU1), Hankly_37 (AM), Heisenberger_37 (AM), Inked_41 (AU), Issa_39 (AU1), JEGGS_37 (AM), Kardesai_39 (AM), KeaneyLin_36 (AM), Leathea_36 (AU6), Lewando_40 (AU6), LilHuddy_40 (AU2), Linda_36 (AW), Makai_37 (AU5), MediumFry_37 (AU4), Michelle_36 (AW), MiniBagel_37 (AU1), Mooshroom_40 (AM), MrAaronian_36 (AW), Mudcat_36 (AM), NapoleonB_38 (AM), Nason_37 (AM), Nightmare_39 (AU1), Niktson_37 (AU1), Nivinsha_39 (AU1), Phaby_40 (AU2), Phaila_38 (AU6), ProfFrink_36 (AW), Raunak_37 (AW), Renaldo_42 (AU6), Salk_36 (AW), ScienceWizSam_40 (AU1), Shepard_41 (AU2), Shiba_36 (AW), Sloopyjoe_36 (AW), Sporto_38 (AW), StarLord_36 (AW), Stayer_36 (AW), Synepsis_37 (AU1), Tatanka_37 (AU1), Teacup_39 (AU1), Tenno_38 (AU1), Tokki_39 (AU2), Tribby_37 (AM), TrixiePhattel_39 (AU6), Truckee_36 (AU5), Trustiboi_39 (AU1), Uzumaki_36 (AU6), Xenomorph_34 (AM), Zeina_38 (AU6),

Summary by clusters:

There are 15 clusters represented in this pham: BI5, AM, AU1, BI7, AU2, AU5, AU4, AW, AU6, BI6, AU, BI4, FK, BI3, BI1,

Info for manual annotations of cluster AM:

- Start number 17 was manually annotated 19 times for cluster AM.

Info for manual annotations of cluster AU:

- Start number 17 was manually annotated 1 time for cluster AU.

Info for manual annotations of cluster AU1:

- Start number 17 was manually annotated 17 times for cluster AU1.

Info for manual annotations of cluster AU2:

- Start number 17 was manually annotated 5 times for cluster AU2.

Info for manual annotations of cluster AU4:

- Start number 17 was manually annotated 2 times for cluster AU4.

Info for manual annotations of cluster AU5:

- Start number 17 was manually annotated 2 times for cluster AU5.

Info for manual annotations of cluster AU6:

- Start number 17 was manually annotated 5 times for cluster AU6.

Info for manual annotations of cluster AW:

- Start number 17 was manually annotated 14 times for cluster AW.

Info for manual annotations of cluster BI1:

- Start number 12 was manually annotated 2 times for cluster BI1.
- Start number 14 was manually annotated 20 times for cluster BI1.

Info for manual annotations of cluster BI3:

- Start number 14 was manually annotated 1 time for cluster BI3.

Info for manual annotations of cluster BI4:

- Start number 14 was manually annotated 5 times for cluster BI4.

Info for manual annotations of cluster BI5:

- Start number 14 was manually annotated 1 time for cluster BI5.

Info for manual annotations of cluster BI6:

- Start number 14 was manually annotated 1 time for cluster BI6.

Info for manual annotations of cluster BI7:

- Start number 14 was manually annotated 1 time for cluster BI7.

Info for manual annotations of cluster FK:

- Start number 16 was manually annotated 2 times for cluster FK.

Gene Information:

Gene: Arcadia_37 Start: 27918, Stop: 28139, Start Num: 17

Candidate Starts for Arcadia_37:

(Start: 17 @27918 has 65 MA's),

Gene: AreFloNak_38 Start: 30359, Stop: 30601, Start Num: 17

Candidate Starts for AreFloNak_38:

(11, 30323), (Start: 17 @30359 has 65 MA's), (25, 30443), (37, 30548), (38, 30587), (39, 30596),

Gene: Argan_36 Start: 28652, Stop: 28891, Start Num: 17

Candidate Starts for Argan_36:

(7, 28517), (10, 28604), (15, 28637), (Start: 17 @28652 has 65 MA's), (23, 28730), (36, 28832), (37, 28841),

Gene: BarbieDoll_41 Start: 30355, Stop: 30594, Start Num: 17
Candidate Starts for BarbieDoll_41:
(15, 30340), (Start: 17 @30355 has 65 MA's),

Gene: BenitoAntonio_38 Start: 27761, Stop: 27982, Start Num: 17
Candidate Starts for BenitoAntonio_38:
(Start: 17 @27761 has 65 MA's),

Gene: Benllo_37 Start: 28439, Stop: 28660, Start Num: 17
Candidate Starts for Benllo_37:
(Start: 17 @28439 has 65 MA's),

Gene: Bing_37 Start: 27756, Stop: 28007, Start Num: 14
Candidate Starts for Bing_37:
(Start: 12 @27744 has 2 MA's), (Start: 14 @27756 has 29 MA's), (28, 27894), (32, 27921),

Gene: Breylor17_39 Start: 30968, Stop: 31210, Start Num: 17
Candidate Starts for Breylor17_39:
(11, 30932), (Start: 17 @30968 has 65 MA's), (25, 31052), (37, 31157), (38, 31196), (39, 31205),

Gene: BronxBay_36 Start: 27776, Stop: 28015, Start Num: 17
Candidate Starts for BronxBay_36:
(Start: 17 @27776 has 65 MA's), (20, 27833), (22, 27845), (29, 27899), (34, 27932),

Gene: Brunswick_38 Start: 30104, Stop: 30346, Start Num: 17
Candidate Starts for Brunswick_38:
(11, 30068), (Start: 17 @30104 has 65 MA's), (25, 30188), (37, 30293),

Gene: CapnMurica_37 Start: 31196, Stop: 31438, Start Num: 17
Candidate Starts for CapnMurica_37:
(11, 31160), (Start: 17 @31196 has 65 MA's), (25, 31280), (37, 31385), (38, 31424), (39, 31433),

Gene: CastorTray_40 Start: 30823, Stop: 31065, Start Num: 17
Candidate Starts for CastorTray_40:
(11, 30787), (Start: 17 @30823 has 65 MA's), (25, 30907), (37, 31012), (38, 31051), (39, 31060),

Gene: Caterpillar_36 Start: 29603, Stop: 29845, Start Num: 17
Candidate Starts for Caterpillar_36:
(11, 29567), (Start: 17 @29603 has 65 MA's), (25, 29687), (37, 29792), (38, 29831),

Gene: Cheesy_37 Start: 27610, Stop: 27831, Start Num: 17
Candidate Starts for Cheesy_37:
(Start: 17 @27610 has 65 MA's),

Gene: CherryBlossom_37 Start: 27952, Stop: 28212, Start Num: 12
Candidate Starts for CherryBlossom_37:
(Start: 12 @27952 has 2 MA's), (Start: 14 @27964 has 29 MA's), (28, 28102), (29, 28105), (36, 28165),

Gene: Circum_39 Start: 28270, Stop: 28491, Start Num: 17
Candidate Starts for Circum_39:
(Start: 17 @28270 has 65 MA's),

Gene: ClubPenguin_32 Start: 26523, Stop: 26768, Start Num: 14
Candidate Starts for ClubPenguin_32:
(Start: 12 @26511 has 2 MA's), (Start: 14 @26523 has 29 MA's), (21, 26598), (26, 26634), (27, 26643),

Gene: Correa_35 Start: 26801, Stop: 27022, Start Num: 17
Candidate Starts for Correa_35:
(Start: 17 @26801 has 65 MA's),

Gene: CricKo_34 Start: 26745, Stop: 26987, Start Num: 14
Candidate Starts for CricKo_34:
(Start: 14 @26745 has 29 MA's), (36, 26934),

Gene: Darby_37 Start: 29946, Stop: 30188, Start Num: 17
Candidate Starts for Darby_37:
(11, 29910), (Start: 17 @29946 has 65 MA's), (25, 30030), (37, 30135), (38, 30174), (39, 30183),

Gene: DevitoJr_38 Start: 30442, Stop: 30684, Start Num: 17
Candidate Starts for DevitoJr_38:
(11, 30406), (Start: 17 @30442 has 65 MA's), (25, 30526), (37, 30631), (38, 30670), (39, 30679),

Gene: Djungelskog_36 Start: 27776, Stop: 28015, Start Num: 17
Candidate Starts for Djungelskog_36:
(Start: 17 @27776 has 65 MA's), (20, 27833), (22, 27845), (34, 27932),

Gene: DoctorPepper_36 Start: 27776, Stop: 28015, Start Num: 17
Candidate Starts for DoctorPepper_36:
(Start: 17 @27776 has 65 MA's), (20, 27833), (22, 27845), (29, 27899), (34, 27932),

Gene: DrGrey_36 Start: 28304, Stop: 28552, Start Num: 14
Candidate Starts for DrGrey_36:
(Start: 12 @28292 has 2 MA's), (Start: 14 @28304 has 29 MA's), (28, 28442), (29, 28445), (36, 28505),

Gene: Dynamite_38 Start: 28101, Stop: 28322, Start Num: 17
Candidate Starts for Dynamite_38:
(Start: 17 @28101 has 65 MA's),

Gene: Egad_36 Start: 27777, Stop: 28016, Start Num: 17
Candidate Starts for Egad_36:
(Start: 17 @27777 has 65 MA's), (20, 27834), (22, 27846), (29, 27900), (34, 27933),

Gene: ElephantMan_37 Start: 30644, Stop: 30886, Start Num: 17
Candidate Starts for ElephantMan_37:
(11, 30608), (Start: 17 @30644 has 65 MA's), (25, 30728), (37, 30833),

Gene: Elsa_37 Start: 27918, Stop: 28139, Start Num: 17
Candidate Starts for Elsa_37:
(Start: 17 @27918 has 65 MA's),

Gene: Elver_67 Start: 44169, Stop: 44420, Start Num: 16
Candidate Starts for Elver_67:
(Start: 16 @44169 has 2 MA's), (18, 44181), (24, 44259), (29, 44298), (34, 44331),

Gene: Esketit_37 Start: 28039, Stop: 28287, Start Num: 14

Candidate Starts for Esketit_37:

(Start: 12 @28027 has 2 MA's), (Start: 14 @28039 has 29 MA's), (28, 28177), (29, 28180), (36, 28240),

Gene: FidgetOrca_37 Start: 28044, Stop: 28292, Start Num: 14

Candidate Starts for FidgetOrca_37:

(Start: 12 @28032 has 2 MA's), (Start: 14 @28044 has 29 MA's), (28, 28182), (29, 28185), (36, 28245),

Gene: FrodoSwaggins_37 Start: 28698, Stop: 28946, Start Num: 14

Candidate Starts for FrodoSwaggins_37:

(Start: 12 @28686 has 2 MA's), (Start: 14 @28698 has 29 MA's), (28, 28836), (29, 28839), (36, 28899),

Gene: FromIndy_34 Start: 26349, Stop: 26591, Start Num: 14

Candidate Starts for FromIndy_34:

(Start: 14 @26349 has 29 MA's), (36, 26538),

Gene: GantcherGoblin_36 Start: 28690, Stop: 28929, Start Num: 17

Candidate Starts for GantcherGoblin_36:

(7, 28555), (10, 28642), (15, 28675), (Start: 17 @28690 has 65 MA's), (23, 28768), (36, 28870), (37, 28879),

Gene: Giantsbane_40 Start: 29463, Stop: 29699, Start Num: 17

Candidate Starts for Giantsbane_40:

(13, 29445), (Start: 17 @29463 has 65 MA's), (33, 29613), (37, 29652),

Gene: GirlPower_34 Start: 29017, Stop: 29277, Start Num: 12

Candidate Starts for GirlPower_34:

(Start: 12 @29017 has 2 MA's), (Start: 14 @29029 has 29 MA's), (26, 29146), (28, 29167), (29, 29170),

Gene: GoCrazy_36 Start: 27748, Stop: 27969, Start Num: 17

Candidate Starts for GoCrazy_36:

(Start: 17 @27748 has 65 MA's),

Gene: Gordon_37 Start: 31225, Stop: 31467, Start Num: 17

Candidate Starts for Gordon_37:

(11, 31189), (Start: 17 @31225 has 65 MA's), (25, 31309), (37, 31414), (38, 31453), (39, 31462),

Gene: Hankly_37 Start: 27293, Stop: 27514, Start Num: 17

Candidate Starts for Hankly_37:

(Start: 17 @27293 has 65 MA's),

Gene: Heisenberger_37 Start: 27603, Stop: 27824, Start Num: 17

Candidate Starts for Heisenberger_37:

(Start: 17 @27603 has 65 MA's),

Gene: Hoshi_37 Start: 28039, Stop: 28287, Start Num: 14

Candidate Starts for Hoshi_37:

(Start: 12 @28027 has 2 MA's), (Start: 14 @28039 has 29 MA's), (28, 28177), (29, 28180), (36, 28240),

Gene: IceWarrior_36 Start: 27739, Stop: 27987, Start Num: 14

Candidate Starts for IceWarrior_36:

(Start: 12 @27727 has 2 MA's), (Start: 14 @27739 has 29 MA's), (28, 27877), (29, 27880), (36, 27940),

Gene: Indigenous_37 Start: 28039, Stop: 28287, Start Num: 14

Candidate Starts for Indigenous_37:

(Start: 12 @28027 has 2 MA's), (Start: 14 @28039 has 29 MA's), (28, 28177), (29, 28180), (36, 28240),

Gene: Inked_41 Start: 31501, Stop: 31728, Start Num: 17

Candidate Starts for Inked_41:

(Start: 17 @31501 has 65 MA's), (19, 31504),

Gene: Issa_39 Start: 30251, Stop: 30493, Start Num: 17

Candidate Starts for Issa_39:

(11, 30215), (Start: 17 @30251 has 65 MA's), (25, 30335), (37, 30440), (38, 30479), (39, 30488),

Gene: JEGGS_37 Start: 27657, Stop: 27878, Start Num: 17

Candidate Starts for JEGGS_37:

(Start: 17 @27657 has 65 MA's),

Gene: Jaylociraptor_37 Start: 28039, Stop: 28287, Start Num: 14

Candidate Starts for Jaylociraptor_37:

(Start: 12 @28027 has 2 MA's), (Start: 14 @28039 has 29 MA's), (28, 28177), (29, 28180), (36, 28240),

Gene: Kardashian_35 Start: 27816, Stop: 28064, Start Num: 14

Candidate Starts for Kardashian_35:

(9, 27786), (Start: 14 @27816 has 29 MA's), (30, 27963),

Gene: Kardesai_39 Start: 28323, Stop: 28544, Start Num: 17

Candidate Starts for Kardesai_39:

(Start: 17 @28323 has 65 MA's),

Gene: KeaneyLin_36 Start: 27748, Stop: 27969, Start Num: 17

Candidate Starts for KeaneyLin_36:

(Start: 17 @27748 has 65 MA's),

Gene: Leathea_36 Start: 28113, Stop: 28352, Start Num: 17

Candidate Starts for Leathea_36:

(1, 27855), (2, 27861), (3, 27930), (4, 27945), (6, 27963), (10, 28065), (15, 28098), (Start: 17 @28113 has 65 MA's), (23, 28191), (37, 28302),

Gene: Lewando_40 Start: 30552, Stop: 30791, Start Num: 17

Candidate Starts for Lewando_40:

(15, 30537), (Start: 17 @30552 has 65 MA's),

Gene: LibertyBell_31 Start: 25601, Stop: 25855, Start Num: 14

Candidate Starts for LibertyBell_31:

(8, 25556), (Start: 14 @25601 has 29 MA's), (31, 25763), (34, 25775), (35, 25793),

Gene: LilHuddy_40 Start: 30610, Stop: 30846, Start Num: 17

Candidate Starts for LilHuddy_40:

(13, 30592), (Start: 17 @30610 has 65 MA's), (33, 30760), (37, 30799),

Gene: Linda_36 Start: 27772, Stop: 28011, Start Num: 17

Candidate Starts for Linda_36:

(Start: 17 @27772 has 65 MA's), (20, 27829), (22, 27841), (29, 27895), (34, 27928),

Gene: Madamoto_35 Start: 27294, Stop: 27545, Start Num: 14

Candidate Starts for Madamoto_35:

(Start: 12 @27282 has 2 MA's), (Start: 14 @27294 has 29 MA's), (29, 27435),

Gene: Makai_37 Start: 30096, Stop: 30332, Start Num: 17

Candidate Starts for Makai_37:

(Start: 17 @30096 has 65 MA's), (37, 30285),

Gene: Maya_37 Start: 28053, Stop: 28301, Start Num: 14

Candidate Starts for Maya_37:

(Start: 12 @28041 has 2 MA's), (Start: 14 @28053 has 29 MA's), (28, 28191), (29, 28194), (36, 28254),

Gene: MediumFry_37 Start: 29916, Stop: 30158, Start Num: 17

Candidate Starts for MediumFry_37:

(11, 29880), (Start: 17 @29916 has 65 MA's), (25, 30000), (37, 30105),

Gene: Meibysrarus_36 Start: 27738, Stop: 27986, Start Num: 14

Candidate Starts for Meibysrarus_36:

(Start: 12 @27726 has 2 MA's), (Start: 14 @27738 has 29 MA's), (28, 27876), (29, 27879), (36, 27939),

Gene: Michelle_36 Start: 27776, Stop: 28015, Start Num: 17

Candidate Starts for Michelle_36:

(Start: 17 @27776 has 65 MA's), (20, 27833), (22, 27845), (29, 27899), (34, 27932),

Gene: Miek_33 Start: 26361, Stop: 26603, Start Num: 14

Candidate Starts for Miek_33:

(Start: 14 @26361 has 29 MA's), (36, 26550),

Gene: MiniBagel_37 Start: 31178, Stop: 31420, Start Num: 17

Candidate Starts for MiniBagel_37:

(11, 31142), (Start: 17 @31178 has 65 MA's), (25, 31262), (37, 31367), (38, 31406), (39, 31415),

Gene: Mooshroom_40 Start: 28323, Stop: 28544, Start Num: 17

Candidate Starts for Mooshroom_40:

(Start: 17 @28323 has 65 MA's),

Gene: MrAaronian_36 Start: 27776, Stop: 28015, Start Num: 17

Candidate Starts for MrAaronian_36:

(Start: 17 @27776 has 65 MA's), (20, 27833), (22, 27845), (34, 27932),

Gene: Mudcat_36 Start: 29309, Stop: 29530, Start Num: 17

Candidate Starts for Mudcat_36:
(Start: 17 @29309 has 65 MA's),

Gene: Namo_37 Start: 28045, Stop: 28293, Start Num: 14
Candidate Starts for Namo_37:
(Start: 12 @28033 has 2 MA's), (Start: 14 @28045 has 29 MA's), (28, 28183), (29, 28186), (36, 28246),

Gene: NapoleonB_38 Start: 28101, Stop: 28322, Start Num: 17
Candidate Starts for NapoleonB_38:
(Start: 17 @28101 has 65 MA's),

Gene: Nason_37 Start: 27918, Stop: 28139, Start Num: 17
Candidate Starts for Nason_37:
(Start: 17 @27918 has 65 MA's),

Gene: Nightmare_39 Start: 30810, Stop: 31052, Start Num: 17
Candidate Starts for Nightmare_39:
(11, 30774), (Start: 17 @30810 has 65 MA's), (25, 30894), (37, 30999), (38, 31038), (39, 31047),

Gene: Niktson_37 Start: 30644, Stop: 30886, Start Num: 17
Candidate Starts for Niktson_37:
(11, 30608), (Start: 17 @30644 has 65 MA's), (25, 30728), (37, 30833),

Gene: Nivinsha_39 Start: 30359, Stop: 30601, Start Num: 17
Candidate Starts for Nivinsha_39:
(11, 30323), (Start: 17 @30359 has 65 MA's), (25, 30443), (37, 30548), (38, 30587), (39, 30596),

Gene: OlympicHelado_37 Start: 28045, Stop: 28293, Start Num: 14
Candidate Starts for OlympicHelado_37:
(Start: 12 @28033 has 2 MA's), (Start: 14 @28045 has 29 MA's), (28, 28183), (29, 28186), (36, 28246),

Gene: Paella_70 Start: 44762, Stop: 45013, Start Num: 16
Candidate Starts for Paella_70:
(Start: 16 @44762 has 2 MA's), (18, 44774), (24, 44852), (29, 44891), (34, 44924),

Gene: Phaby_40 Start: 30565, Stop: 30801, Start Num: 17
Candidate Starts for Phaby_40:
(13, 30547), (Start: 17 @30565 has 65 MA's), (33, 30715), (37, 30754),

Gene: Phaila_38 Start: 28726, Stop: 28965, Start Num: 17
Candidate Starts for Phaila_38:
(5, 28576), (7, 28591), (10, 28678), (15, 28711), (Start: 17 @28726 has 65 MA's), (23, 28804), (36, 28906), (37, 28915),

Gene: Popy_37 Start: 28698, Stop: 28946, Start Num: 14
Candidate Starts for Popy_37:
(Start: 12 @28686 has 2 MA's), (Start: 14 @28698 has 29 MA's), (28, 28836), (29, 28839), (36, 28899),

Gene: ProfFrink_36 Start: 27776, Stop: 28015, Start Num: 17
Candidate Starts for ProfFrink_36:

(Start: 17 @27776 has 65 MA's), (20, 27833), (22, 27845), (29, 27899), (34, 27932),

Gene: Qui_70 Start: 44762, Stop: 45013, Start Num: 16

Candidate Starts for Qui_70:

(Start: 16 @44762 has 2 MA's), (18, 44774), (24, 44852), (29, 44891), (34, 44924),

Gene: Rainydai_34 Start: 26745, Stop: 26987, Start Num: 14

Candidate Starts for Rainydai_34:

(Start: 14 @26745 has 29 MA's), (36, 26934),

Gene: Raunak_37 Start: 27771, Stop: 28010, Start Num: 17

Candidate Starts for Raunak_37:

(Start: 17 @27771 has 65 MA's), (20, 27828), (22, 27840), (29, 27894), (34, 27927),

Gene: Regigigas_35 Start: 26745, Stop: 26987, Start Num: 14

Candidate Starts for Regigigas_35:

(Start: 14 @26745 has 29 MA's), (36, 26934),

Gene: Renaldo_42 Start: 30569, Stop: 30808, Start Num: 17

Candidate Starts for Renaldo_42:

(15, 30554), (Start: 17 @30569 has 65 MA's),

Gene: Rima_37 Start: 28045, Stop: 28293, Start Num: 14

Candidate Starts for Rima_37:

(Start: 12 @28033 has 2 MA's), (Start: 14 @28045 has 29 MA's), (28, 28183), (29, 28186), (36, 28246),

Gene: Salk_36 Start: 27772, Stop: 28011, Start Num: 17

Candidate Starts for Salk_36:

(Start: 17 @27772 has 65 MA's), (20, 27829), (22, 27841), (29, 27895), (34, 27928),

Gene: ScienceWizSam_40 Start: 30761, Stop: 31003, Start Num: 17

Candidate Starts for ScienceWizSam_40:

(11, 30725), (Start: 17 @30761 has 65 MA's), (25, 30845), (37, 30950), (38, 30989), (39, 30998),

Gene: SendItCS_32 Start: 26361, Stop: 26603, Start Num: 14

Candidate Starts for SendItCS_32:

(Start: 14 @26361 has 29 MA's), (36, 26550),

Gene: Shepard_41 Start: 30896, Stop: 31132, Start Num: 17

Candidate Starts for Shepard_41:

(13, 30878), (Start: 17 @30896 has 65 MA's), (33, 31046), (37, 31085),

Gene: Shiba_36 Start: 27771, Stop: 28010, Start Num: 17

Candidate Starts for Shiba_36:

(Start: 17 @27771 has 65 MA's), (20, 27828), (22, 27840), (29, 27894), (34, 27927),

Gene: Sloopyjoe_36 Start: 27777, Stop: 28016, Start Num: 17

Candidate Starts for Sloopyjoe_36:

(Start: 17 @27777 has 65 MA's), (20, 27834), (22, 27846), (29, 27900), (34, 27933),

Gene: Soshi_36 Start: 28310, Stop: 28558, Start Num: 14

Candidate Starts for Soshi_36:

(Start: 12 @28298 has 2 MA's), (Start: 14 @28310 has 29 MA's), (28, 28448), (29, 28451), (36, 28511),

Gene: Spectropatronm_37 Start: 28039, Stop: 28287, Start Num: 14

Candidate Starts for Spectropatronm_37:

(Start: 12 @28027 has 2 MA's), (Start: 14 @28039 has 29 MA's), (28, 28177), (29, 28180), (36, 28240),

Gene: Sporto_38 Start: 29260, Stop: 29499, Start Num: 17

Candidate Starts for Sporto_38:

(Start: 17 @29260 has 65 MA's), (20, 29317), (22, 29329), (29, 29383), (34, 29416),

Gene: StarLord_36 Start: 27777, Stop: 28016, Start Num: 17

Candidate Starts for StarLord_36:

(Start: 17 @27777 has 65 MA's), (20, 27834), (22, 27846), (29, 27900), (34, 27933),

Gene: Stayer_36 Start: 27772, Stop: 28011, Start Num: 17

Candidate Starts for Stayer_36:

(Start: 17 @27772 has 65 MA's), (20, 27829), (22, 27841), (29, 27895), (34, 27928),

Gene: Synopsis_37 Start: 30426, Stop: 30668, Start Num: 17

Candidate Starts for Synopsis_37:

(11, 30390), (Start: 17 @30426 has 65 MA's), (25, 30510), (37, 30615), (38, 30654), (39, 30663),

Gene: TaidaOne_37 Start: 28595, Stop: 28843, Start Num: 14

Candidate Starts for TaidaOne_37:

(Start: 12 @28583 has 2 MA's), (Start: 14 @28595 has 29 MA's), (28, 28733), (29, 28736), (36, 28796),

Gene: Tatanka_37 Start: 30589, Stop: 30831, Start Num: 17

Candidate Starts for Tatanka_37:

(11, 30553), (Start: 17 @30589 has 65 MA's), (25, 30673), (37, 30778),

Gene: Teacup_39 Start: 30574, Stop: 30816, Start Num: 17

Candidate Starts for Teacup_39:

(11, 30538), (Start: 17 @30574 has 65 MA's), (25, 30658), (37, 30763),

Gene: Tenno_38 Start: 31187, Stop: 31429, Start Num: 17

Candidate Starts for Tenno_38:

(11, 31151), (Start: 17 @31187 has 65 MA's), (25, 31271), (37, 31376), (38, 31415), (39, 31424),

Gene: Thiqqums_34 Start: 26745, Stop: 26987, Start Num: 14

Candidate Starts for Thiqqums_34:

(Start: 14 @26745 has 29 MA's), (36, 26934),

Gene: TieDye_36 Start: 27639, Stop: 27887, Start Num: 14

Candidate Starts for TieDye_36:

(Start: 12 @27627 has 2 MA's), (Start: 14 @27639 has 29 MA's), (28, 27777), (29, 27780), (36, 27840),

Gene: Tokki_39 Start: 30282, Stop: 30518, Start Num: 17

Candidate Starts for Tokki_39:

(13, 30264), (Start: 17 @30282 has 65 MA's), (33, 30432), (37, 30471),

Gene: TonyStarch_36 Start: 27744, Stop: 27992, Start Num: 14
Candidate Starts for TonyStarch_36:
(Start: 12 @27732 has 2 MA's), (Start: 14 @27744 has 29 MA's), (28, 27882), (29, 27885), (36, 27945),

Gene: Tribby_37 Start: 27633, Stop: 27854, Start Num: 17
Candidate Starts for Tribby_37:
(Start: 17 @27633 has 65 MA's),

Gene: TrixiePhattel_39 Start: 28923, Stop: 29162, Start Num: 17
Candidate Starts for TrixiePhattel_39:
(15, 28908), (Start: 17 @28923 has 65 MA's), (37, 29112),

Gene: Truckee_36 Start: 30146, Stop: 30382, Start Num: 17
Candidate Starts for Truckee_36:
(Start: 17 @30146 has 65 MA's), (37, 30335),

Gene: Trustiboi_39 Start: 30978, Stop: 31220, Start Num: 17
Candidate Starts for Trustiboi_39:
(11, 30942), (Start: 17 @30978 has 65 MA's), (25, 31062), (37, 31167), (38, 31206), (39, 31215),

Gene: Uzumaki_36 Start: 29214, Stop: 29453, Start Num: 17
Candidate Starts for Uzumaki_36:
(7, 29079), (10, 29166), (15, 29199), (Start: 17 @29214 has 65 MA's), (23, 29292), (36, 29394), (37, 29403),

Gene: Xenomorph_34 Start: 27589, Stop: 27810, Start Num: 17
Candidate Starts for Xenomorph_34:
(Start: 17 @27589 has 65 MA's),

Gene: Zeina_38 Start: 29069, Stop: 29308, Start Num: 17
Candidate Starts for Zeina_38:
(7, 28934), (10, 29021), (15, 29054), (Start: 17 @29069 has 65 MA's), (23, 29147), (36, 29249), (37, 29258),