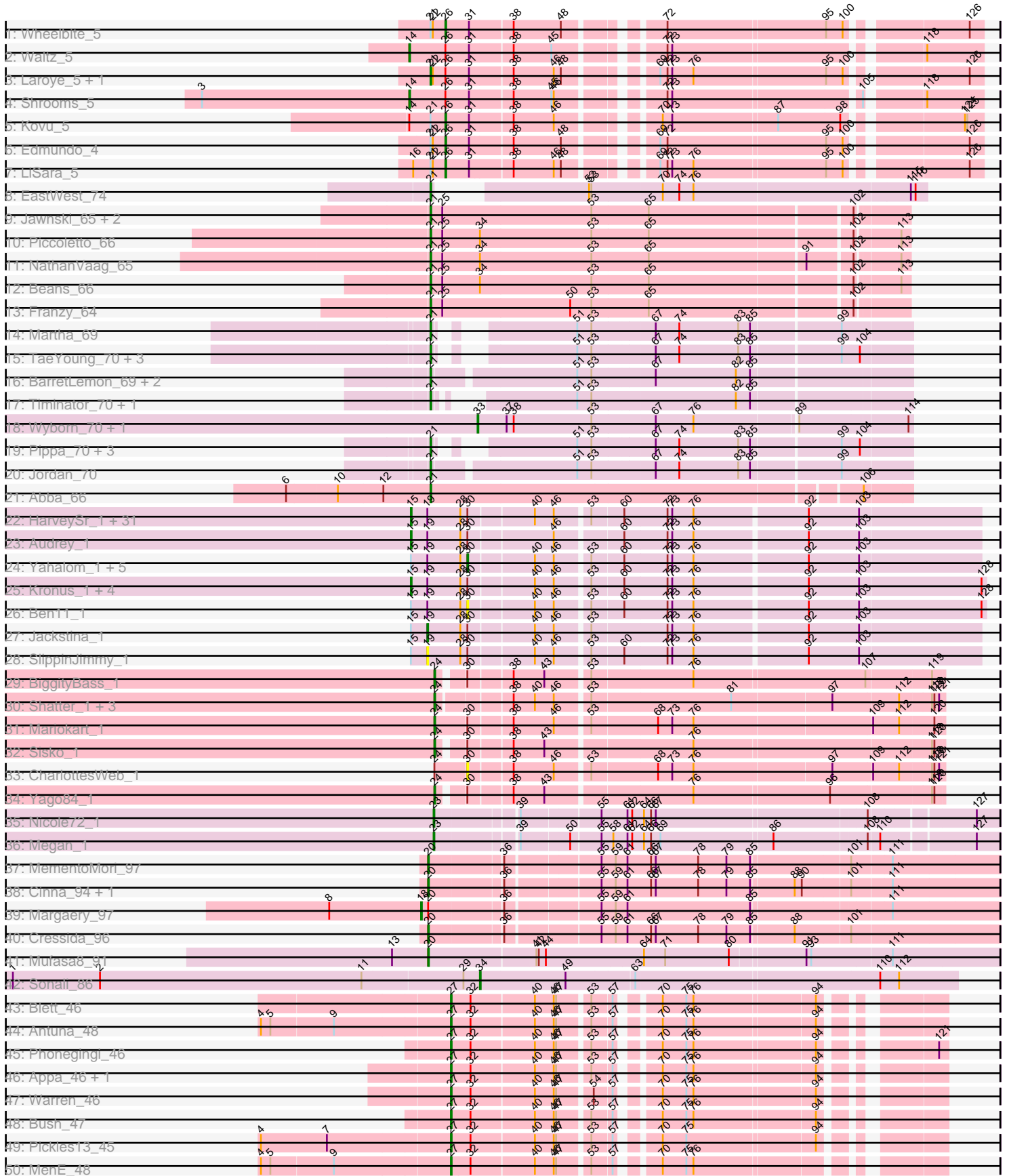
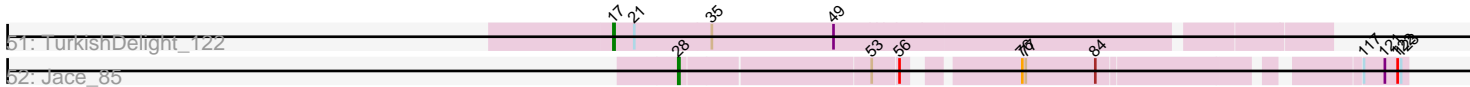


Pham 195501



Pham 195501



Note: Tracks are now grouped by subcluster and scaled. Switching in subcluster is indicated by changes in track color. Track scale is now set by default to display the region 30 bp upstream of start 1 to 30 bp downstream of the last possible start. If this default region is judged to be packed too tightly with annotated starts, the track will be further scaled to only show that region of the ORF with annotated starts. This action will be indicated by adding "Zoomed" to the title. For starts, yellow indicates the location of called starts comprised solely of Glimmer/GeneMark auto-annotations, green indicates the location of called starts with at least 1 manual gene annotation.

Pham 195501 Report

This analysis was run 12/09/24 on database version 580.

Pham number 195501 has 110 members, 4 are drafts.

Phages represented in each track:

- Track 1 : Wheelbite_5
- Track 2 : Waltz_5
- Track 3 : Laroye_5, Salgado_5
- Track 4 : Shrooms_5
- Track 5 : Kovu_5
- Track 6 : Edmundo_4
- Track 7 : LiSara_5
- Track 8 : EastWest_74
- Track 9 : Jawnski_65, King2_64, Brent_66
- Track 10 : Piccoletto_66
- Track 11 : NathanVaag_65
- Track 12 : Beans_66
- Track 13 : Franzy_64
- Track 14 : Martha_69
- Track 15 : TaeYoung_70, JKerns_69, Grekaycon_70, BossLady_71
- Track 16 : BarretLemon_69, GravityBall_69, StevieBAY_70
- Track 17 : Timinator_70, LeeroyJ_70
- Track 18 : Wyborn_70, Sicarius2_71
- Track 19 : Pippa_70, Shade_69, Sonny_69, Zartrosa_71
- Track 20 : Jordan_70
- Track 21 : Abba_66
- Track 22 : HarveySr_1, Briakila_1, Phlyer_1, Rita1961_1, Philly_1, Devonte_1, ChaChing_1, OrangeOswald_1, Gadget_1, Neos5_1, MmasiCarm_1, GlenHope_1, SynergyX_1, Pipefish_1, Heathcliff_1, Marley1013_1, Baloo_1, Akoma_1, RagingRooster_1, RomaT_1, Nozo_1, Obutu_1, Compostia_1, Yinz_1, Chandler_1, Athena_1, Gervas_1, Abinghost_1, Deenasa_1, LestyG_1, Daisy_1, Corofin_1
- Track 23 : Audrey_1
- Track 24 : Yahalom_1, Morty007_1, Bernardo_1, Tydolla_1, Phaedrus_1, Kamiyu_1
- Track 25 : Kronus_1, Casbah_1, Phayeta_1, Mortcellus_1, Halfpint_1
- Track 26 : Ben11_1
- Track 27 : Jackstina_1
- Track 28 : SlippinJimmy_1
- Track 29 : BiggityBass_1
- Track 30 : Shatter_1, Fresco_1, Axumite_1, Ligma_1
- Track 31 : Mariokart_1
- Track 32 : Sisko_1
- Track 33 : CharlottesWeb_1

- Track 34 : Yago84_1
- Track 35 : Nicole72_1
- Track 36 : Megan_1
- Track 37 : MementoMori_97
- Track 38 : Cinna_94, Matzah_98
- Track 39 : Margaery_97
- Track 40 : Cressida_96
- Track 41 : Mufasa8_91
- Track 42 : Sonali_86
- Track 43 : Blett_46
- Track 44 : Antuna_48
- Track 45 : Phonegingi_46
- Track 46 : Appa_46, Dropshot_46
- Track 47 : Warren_46
- Track 48 : Bush_47
- Track 49 : Pickles13_45
- Track 50 : MenE_48
- Track 51 : TurkishDelight_122
- Track 52 : Jace_85

Summary of Final Annotations (See graph section above for start numbers):

The start number called the most often in the published annotations is 15, it was called in 38 of the 106 non-draft genes in the pham.

Genes that call this "Most Annotated" start:

- Abinghost_1, Akoma_1, Athena_1, Audrey_1, Baloo_1, Briakila_1, Casbah_1, ChaChing_1, Chandler_1, Compostia_1, Corofin_1, Daisy_1, Deenasa_1, Devonte_1, Gadget_1, Gervas_1, GlenHope_1, Halfpint_1, HarveySr_1, Heathcliff_1, Kronus_1, LestyG_1, Marley1013_1, MmasiCarm_1, Mortcellus_1, Neos5_1, Nozo_1, Obutu_1, OrangeOswald_1, Phayeta_1, Philly_1, Phlyer_1, Pipefish_1, RagingRooster_1, Rita1961_1, RomaT_1, SynergyX_1, Yinz_1,

Genes that have the "Most Annotated" start but do not call it:

- Ben11_1, Bernardo_1, Jackstina_1, Kamiyu_1, Morty007_1, Phaedrus_1, SlippinJimmy_1, Tydolla_1, Yahalom_1,

Genes that do not have the "Most Annotated" start:

- Abba_66, Antuna_48, Appa_46, Axumite_1, BarretLemon_69, Beans_66, BiggityBass_1, Blett_46, BossLady_71, Brent_66, Bush_47, CharlottesWeb_1, Cinna_94, Cressida_96, Dropshot_46, EastWest_74, Edmundo_4, Franzy_64, Fresco_1, GravityBall_69, Grekaycon_70, JKerns_69, Jace_85, Jawnski_65, Jordan_70, King2_64, Kovu_5, Laroye_5, LeeroyJ_70, LiSara_5, Ligma_1, Margaery_97, Mariokart_1, Martha_69, Matzah_98, Megan_1, MementoMori_97, MenE_48, Mufasa8_91, NathanVaag_65, Nicole72_1, Phonegingi_46, Piccoletto_66, Pickles13_45, Pippa_70, Salgado_5, Shade_69, Shatter_1, Shrooms_5, Sicarius2_71, Sisko_1, Sonali_86, Sonny_69, StevieBAY_70, TaeYoung_70, Timinator_70, TurkishDelight_122, Waltz_5, Warren_46, Wheelbite_5, Wyborn_70, Yago84_1, Zartrosa_71,

Summary by start number:

Start 14:

- Found in 3 of 110 (2.7%) of genes in pham
- Manual Annotations of this start: 2 of 106
- Called 66.7% of time when present
- Phage (with cluster) where this start called: Shrooms_5 (AL), Waltz_5 (AL),

Start 15:

- Found in 47 of 110 (42.7%) of genes in pham
- Manual Annotations of this start: 38 of 106
- Called 80.9% of time when present
- Phage (with cluster) where this start called: Abinghost_1 (B3), Akoma_1 (B3), Athena_1 (B3), Audrey_1 (B3), Baloo_1 (B3), Briakila_1 (B3), Casbah_1 (B3), ChaChing_1 (B3), Chandler_1 (B3), Compostia_1 (B3), Corofin_1 (B3), Daisy_1 (B3), Deenasa_1 (B3), Devonte_1 (B3), Gadget_1 (B3), Gervas_1 (B3), GlenHope_1 (B3), Halfpint_1 (B3), HarveySr_1 (B3), Heathcliff_1 (B3), Kronus_1 (B3), LestyG_1 (B3), Marley1013_1 (B3), MmasiCarm_1 (B3), Mortcellus_1 (B3), Neos5_1 (B3), Nozo_1 (B3), Obutu_1 (B3), OrangeOswald_1 (B3), Phayeta_1 (B3), Philly_1 (B3), Phlyer_1 (B3), Pipefish_1 (B3), RagingRooster_1 (B3), Rita1961_1 (B3), RomaT_1 (B3), SynergyX_1 (B3), Yinz_1 (B3),

Start 17:

- Found in 1 of 110 (0.9%) of genes in pham
- Manual Annotations of this start: 1 of 106
- Called 100.0% of time when present
- Phage (with cluster) where this start called: TurkishDelight_122 (singleton),

Start 18:

- Found in 1 of 110 (0.9%) of genes in pham
- Manual Annotations of this start: 1 of 106
- Called 100.0% of time when present
- Phage (with cluster) where this start called: Margaery_97 (EI),

Start 19:

- Found in 47 of 110 (42.7%) of genes in pham
- Manual Annotations of this start: 1 of 106
- Called 4.3% of time when present
- Phage (with cluster) where this start called: Jackstina_1 (B3), SlippinJimmy_1 (B3),

Start 20:

- Found in 6 of 110 (5.5%) of genes in pham
- Manual Annotations of this start: 5 of 106
- Called 83.3% of time when present
- Phage (with cluster) where this start called: Cinna_94 (EI), Cressida_96 (EI), Matzah_98 (EI), MementoMori_97 (EI), Mufasa8_91 (FG),

Start 21:

- Found in 31 of 110 (28.2%) of genes in pham
- Manual Annotations of this start: 25 of 106
- Called 83.9% of time when present
- Phage (with cluster) where this start called: Abba_66 (AO3), BarretLemon_69 (AO2), Beans_66 (AO1), BossLady_71 (AO2), Brent_66 (AO1), EastWest_74 (AO),

Franzy_64 (AO1), GravityBall_69 (AO2), Grekaycon_70 (AO2), JKerns_69 (AO2), Jawnski_65 (AO1), Jordan_70 (AO2), King2_64 (AO1), Laroye_5 (AL), LeeroyJ_70 (AO2), Martha_69 (AO2), NathanVaag_65 (AO1), Piccoletto_66 (AO1), Pippa_70 (AO2), Salgado_5 (AL), Shade_69 (AO2), Sonny_69 (AO2), StevieBAY_70 (AO2), TaeYoung_70 (AO2), Timinator_70 (AO2), Zartrosa_71 (AO2),

Start 23:

- Found in 2 of 110 (1.8%) of genes in pham
- Manual Annotations of this start: 2 of 106
- Called 100.0% of time when present
- Phage (with cluster) where this start called: Megan_1 (EC), Nicole72_1 (EC),

Start 24:

- Found in 9 of 110 (8.2%) of genes in pham
- Manual Annotations of this start: 8 of 106
- Called 88.9% of time when present
- Phage (with cluster) where this start called: Axumite_1 (DR), BiggityBass_1 (DR), Fresco_1 (DR), Ligma_1 (DR), Mariokart_1 (DR), Shatter_1 (DR), Sisko_1 (DR), Yago84_1 (DR),

Start 26:

- Found in 8 of 110 (7.3%) of genes in pham
- Manual Annotations of this start: 4 of 106
- Called 50.0% of time when present
- Phage (with cluster) where this start called: Edmundo_4 (AL), Kovu_5 (AL), LiSara_5 (AL), Wheelbite_5 (AL),

Start 27:

- Found in 9 of 110 (8.2%) of genes in pham
- Manual Annotations of this start: 9 of 106
- Called 100.0% of time when present
- Phage (with cluster) where this start called: Antuna_48 (GA), Appa_46 (GA), Blett_46 (GA), Bush_47 (GA), Dropshot_46 (GA), MenE_48 (GA), Phonegingi_46 (GA), Pickles13_45 (GA), Warren_46 (GA),

Start 28:

- Found in 48 of 110 (43.6%) of genes in pham
- Manual Annotations of this start: 1 of 106
- Called 2.1% of time when present
- Phage (with cluster) where this start called: Jace_85 (singleton),

Start 30:

- Found in 52 of 110 (47.3%) of genes in pham
- Manual Annotations of this start: 6 of 106
- Called 15.4% of time when present
- Phage (with cluster) where this start called: Ben11_1 (B3), Bernardo_1 (B3), CharlottesWeb_1 (DR), Kamiyu_1 (B3), Morty007_1 (B3), Phaedrus_1 (B3), Tydolla_1 (B3), Yahalom_1 (B3),

Start 33:

- Found in 2 of 110 (1.8%) of genes in pham
- Manual Annotations of this start: 2 of 106
- Called 100.0% of time when present

- Phage (with cluster) where this start called: Sicarius2_71 (AO2), Wyborn_70 (AO2),

Start 34:

- Found in 4 of 110 (3.6%) of genes in pham
- Manual Annotations of this start: 1 of 106
- Called 25.0% of time when present
- Phage (with cluster) where this start called: Sonali_86 (FG),

Summary by clusters:

There are 12 clusters represented in this pham: EC, singleton, EI, AO1, FG, AL, AO, AO3, AO2, GA, B3, DR,

Info for manual annotations of cluster AL:

- Start number 14 was manually annotated 2 times for cluster AL.
- Start number 21 was manually annotated 2 times for cluster AL.
- Start number 26 was manually annotated 4 times for cluster AL.

Info for manual annotations of cluster AO:

- Start number 21 was manually annotated 1 time for cluster AO.

Info for manual annotations of cluster AO1:

- Start number 21 was manually annotated 7 times for cluster AO1.

Info for manual annotations of cluster AO2:

- Start number 21 was manually annotated 14 times for cluster AO2.
- Start number 33 was manually annotated 2 times for cluster AO2.

Info for manual annotations of cluster AO3:

- Start number 21 was manually annotated 1 time for cluster AO3.

Info for manual annotations of cluster B3:

- Start number 15 was manually annotated 38 times for cluster B3.
- Start number 19 was manually annotated 1 time for cluster B3.
- Start number 30 was manually annotated 6 times for cluster B3.

Info for manual annotations of cluster DR:

- Start number 24 was manually annotated 8 times for cluster DR.

Info for manual annotations of cluster EC:

- Start number 23 was manually annotated 2 times for cluster EC.

Info for manual annotations of cluster EI:

- Start number 18 was manually annotated 1 time for cluster EI.
- Start number 20 was manually annotated 4 times for cluster EI.

Info for manual annotations of cluster FG:

- Start number 20 was manually annotated 1 time for cluster FG.
- Start number 34 was manually annotated 1 time for cluster FG.

Info for manual annotations of cluster GA:

- Start number 27 was manually annotated 9 times for cluster GA.

Gene Information:

Gene: Abba_66 Start: 41901, Stop: 42479, Start Num: 21

Candidate Starts for Abba_66:

(6, 41721), (10, 41784), (12, 41841), (Start: 21 @41901 has 25 MA's), (106, 42423),

Gene: Abinghost_1 Start: 1, Stop: 693, Start Num: 15

Candidate Starts for Abinghost_1:

(Start: 15 @1 has 38 MA's), (Start: 19 @22 has 1 MA's), (Start: 28 @64 has 1 MA's), (Start: 30 @73 has 6 MA's), (40, 151), (46, 175), (53, 214), (60, 253), (72, 307), (73, 313), (76, 340), (92, 478), (103, 541),

Gene: Akoma_1 Start: 1, Stop: 693, Start Num: 15

Candidate Starts for Akoma_1:

(Start: 15 @1 has 38 MA's), (Start: 19 @22 has 1 MA's), (Start: 28 @64 has 1 MA's), (Start: 30 @73 has 6 MA's), (40, 151), (46, 175), (53, 214), (60, 253), (72, 307), (73, 313), (76, 340), (92, 478), (103, 541),

Gene: Antuna_48 Start: 29370, Stop: 29903, Start Num: 27

Candidate Starts for Antuna_48:

(4, 29136), (5, 29148), (9, 29226), (Start: 27 @29370 has 9 MA's), (32, 29394), (40, 29472), (46, 29496), (47, 29499), (53, 29535), (57, 29559), (70, 29598), (75, 29628), (76, 29637), (94, 29784),

Gene: Appa_46 Start: 29135, Stop: 29668, Start Num: 27

Candidate Starts for Appa_46:

(Start: 27 @29135 has 9 MA's), (32, 29159), (40, 29237), (46, 29261), (47, 29264), (53, 29300), (57, 29324), (70, 29363), (75, 29393), (76, 29402), (94, 29549),

Gene: Athena_1 Start: 1, Stop: 693, Start Num: 15

Candidate Starts for Athena_1:

(Start: 15 @1 has 38 MA's), (Start: 19 @22 has 1 MA's), (Start: 28 @64 has 1 MA's), (Start: 30 @73 has 6 MA's), (40, 151), (46, 175), (53, 214), (60, 253), (72, 307), (73, 313), (76, 340), (92, 478), (103, 541),

Gene: Audrey_1 Start: 1, Stop: 693, Start Num: 15

Candidate Starts for Audrey_1:

(Start: 15 @1 has 38 MA's), (Start: 19 @22 has 1 MA's), (Start: 28 @64 has 1 MA's), (Start: 30 @73 has 6 MA's), (46, 175), (60, 253), (72, 307), (73, 313), (76, 340), (92, 478), (103, 541),

Gene: Axumite_1 Start: 1, Stop: 606, Start Num: 24

Candidate Starts for Axumite_1:

(Start: 24 @1 has 8 MA's), (38, 85), (40, 112), (46, 136), (53, 175), (81, 349), (97, 472), (112, 553), (119, 592), (120, 595), (121, 601),

Gene: Baloo_1 Start: 1, Stop: 693, Start Num: 15

Candidate Starts for Baloo_1:

(Start: 15 @1 has 38 MA's), (Start: 19 @22 has 1 MA's), (Start: 28 @64 has 1 MA's), (Start: 30 @73 has 6 MA's), (40, 151), (46, 175), (53, 214), (60, 253), (72, 307), (73, 313), (76, 340), (92, 478), (103, 541),

Gene: BarretLemon_69 Start: 44545, Stop: 45120, Start Num: 21

Candidate Starts for BarretLemon_69:

(Start: 21 @44545 has 25 MA's), (51, 44716), (53, 44734), (67, 44809), (82, 44911), (85, 44929),

Gene: Beans_66 Start: 44464, Stop: 45042, Start Num: 21

Candidate Starts for Beans_66:

(Start: 21 @44464 has 25 MA's), (25, 44479), (Start: 34 @44527 has 1 MA's), (53, 44668), (65, 44737), (102, 44980), (113, 45031),

Gene: Ben11_1 Start: 73, Stop: 699, Start Num: 30

Candidate Starts for Ben11_1:

(Start: 15 @1 has 38 MA's), (Start: 19 @22 has 1 MA's), (Start: 28 @64 has 1 MA's), (Start: 30 @73 has 6 MA's), (40, 151), (46, 175), (53, 214), (60, 253), (72, 307), (73, 313), (76, 340), (92, 478), (103, 541), (128, 694),

Gene: Bernardo_1 Start: 73, Stop: 693, Start Num: 30

Candidate Starts for Bernardo_1:

(Start: 15 @1 has 38 MA's), (Start: 19 @22 has 1 MA's), (Start: 28 @64 has 1 MA's), (Start: 30 @73 has 6 MA's), (40, 151), (46, 175), (53, 214), (60, 253), (72, 307), (73, 313), (76, 340), (92, 478), (103, 541),

Gene: BiggityBass_1 Start: 1, Stop: 600, Start Num: 24

Candidate Starts for BiggityBass_1:

(Start: 24 @1 has 8 MA's), (Start: 30 @28 has 6 MA's), (38, 79), (43, 118), (53, 169), (76, 295), (107, 508), (119, 586),

Gene: Blett_46 Start: 29321, Stop: 29854, Start Num: 27

Candidate Starts for Blett_46:

(Start: 27 @29321 has 9 MA's), (32, 29345), (40, 29423), (46, 29447), (47, 29450), (53, 29486), (57, 29510), (70, 29549), (75, 29579), (76, 29588), (94, 29735),

Gene: BossLady_71 Start: 45159, Stop: 45689, Start Num: 21

Candidate Starts for BossLady_71:

(Start: 21 @45159 has 25 MA's), (51, 45285), (53, 45303), (67, 45378), (74, 45408), (83, 45483), (85, 45498), (99, 45606), (104, 45627),

Gene: Brent_66 Start: 44549, Stop: 45127, Start Num: 21

Candidate Starts for Brent_66:

(Start: 21 @44549 has 25 MA's), (25, 44564), (53, 44753), (65, 44822), (102, 45065),

Gene: Briakila_1 Start: 1, Stop: 693, Start Num: 15

Candidate Starts for Briakila_1:

(Start: 15 @1 has 38 MA's), (Start: 19 @22 has 1 MA's), (Start: 28 @64 has 1 MA's), (Start: 30 @73 has 6 MA's), (40, 151), (46, 175), (53, 214), (60, 253), (72, 307), (73, 313), (76, 340), (92, 478), (103, 541),

Gene: Bush_47 Start: 29269, Stop: 29802, Start Num: 27

Candidate Starts for Bush_47:

(Start: 27 @29269 has 9 MA's), (32, 29293), (40, 29371), (46, 29395), (47, 29398), (53, 29434), (57, 29458), (70, 29497), (75, 29527), (76, 29536), (94, 29683),

Gene: Casbah_1 Start: 1, Stop: 699, Start Num: 15

Candidate Starts for Casbah_1:

(Start: 15 @1 has 38 MA's), (Start: 19 @22 has 1 MA's), (Start: 28 @64 has 1 MA's), (Start: 30 @73 has 6 MA's), (40, 151), (46, 175), (53, 214), (60, 253), (72, 307), (73, 313), (76, 340), (92, 478), (103, 541), (128, 694),

Gene: ChaChing_1 Start: 1, Stop: 693, Start Num: 15

Candidate Starts for ChaChing_1:

(Start: 15 @1 has 38 MA's), (Start: 19 @22 has 1 MA's), (Start: 28 @64 has 1 MA's), (Start: 30 @73 has 6 MA's), (40, 151), (46, 175), (53, 214), (60, 253), (72, 307), (73, 313), (76, 340), (92, 478), (103, 541),

Gene: Chandler_1 Start: 1, Stop: 693, Start Num: 15

Candidate Starts for Chandler_1:

(Start: 15 @1 has 38 MA's), (Start: 19 @22 has 1 MA's), (Start: 28 @64 has 1 MA's), (Start: 30 @73 has 6 MA's), (40, 151), (46, 175), (53, 214), (60, 253), (72, 307), (73, 313), (76, 340), (92, 478), (103, 541),

Gene: CharlottesWeb_1 Start: 40, Stop: 612, Start Num: 30

Candidate Starts for CharlottesWeb_1:

(Start: 24 @1 has 8 MA's), (Start: 30 @40 has 6 MA's), (38, 91), (46, 142), (53, 181), (68, 262), (73, 280), (76, 307), (97, 478), (109, 526), (112, 559), (119, 598), (120, 601), (121, 607),

Gene: Cinna_94 Start: 54580, Stop: 55263, Start Num: 20

Candidate Starts for Cinna_94:

(Start: 20 @54580 has 5 MA's), (36, 54667), (55, 54775), (59, 54793), (61, 54808), (66, 54838), (67, 54844), (78, 54898), (79, 54934), (85, 54964), (88, 55015), (90, 55024), (101, 55081), (111, 55129),

Gene: Compostia_1 Start: 1, Stop: 693, Start Num: 15

Candidate Starts for Compostia_1:

(Start: 15 @1 has 38 MA's), (Start: 19 @22 has 1 MA's), (Start: 28 @64 has 1 MA's), (Start: 30 @73 has 6 MA's), (40, 151), (46, 175), (53, 214), (60, 253), (72, 307), (73, 313), (76, 340), (92, 478), (103, 541),

Gene: Corofin_1 Start: 1, Stop: 693, Start Num: 15

Candidate Starts for Corofin_1:

(Start: 15 @1 has 38 MA's), (Start: 19 @22 has 1 MA's), (Start: 28 @64 has 1 MA's), (Start: 30 @73 has 6 MA's), (40, 151), (46, 175), (53, 214), (60, 253), (72, 307), (73, 313), (76, 340), (92, 478), (103, 541),

Gene: Cressida_96 Start: 55174, Stop: 55857, Start Num: 20

Candidate Starts for Cressida_96:

(Start: 20 @55174 has 5 MA's), (36, 55261), (55, 55369), (59, 55387), (61, 55402), (66, 55432), (67, 55438), (78, 55492), (79, 55528), (85, 55558), (88, 55609), (101, 55675),

Gene: Daisy_1 Start: 1, Stop: 693, Start Num: 15

Candidate Starts for Daisy_1:

(Start: 15 @1 has 38 MA's), (Start: 19 @22 has 1 MA's), (Start: 28 @64 has 1 MA's), (Start: 30 @73 has 6 MA's), (40, 151), (46, 175), (53, 214), (60, 253), (72, 307), (73, 313), (76, 340), (92, 478), (103, 541),

Gene: Deenasa_1 Start: 1, Stop: 693, Start Num: 15

Candidate Starts for Deenasa_1:

(Start: 15 @1 has 38 MA's), (Start: 19 @22 has 1 MA's), (Start: 28 @64 has 1 MA's), (Start: 30 @73 has 6 MA's), (40, 151), (46, 175), (53, 214), (60, 253), (72, 307), (73, 313), (76, 340), (92, 478), (103, 541),

541),

Gene: Devonte_1 Start: 1, Stop: 693, Start Num: 15

Candidate Starts for Devonte_1:

(Start: 15 @1 has 38 MA's), (Start: 19 @22 has 1 MA's), (Start: 28 @64 has 1 MA's), (Start: 30 @73 has 6 MA's), (40, 151), (46, 175), (53, 214), (60, 253), (72, 307), (73, 313), (76, 340), (92, 478), (103, 541),

Gene: Dropshot_46 Start: 28970, Stop: 29503, Start Num: 27

Candidate Starts for Dropshot_46:

(Start: 27 @28970 has 9 MA's), (32, 28994), (40, 29072), (46, 29096), (47, 29099), (53, 29135), (57, 29159), (70, 29198), (75, 29228), (76, 29237), (94, 29384),

Gene: EastWest_74 Start: 43726, Stop: 44280, Start Num: 21

Candidate Starts for EastWest_74:

(Start: 21 @43726 has 25 MA's), (52, 43861), (53, 43864), (70, 43951), (74, 43972), (76, 43990), (115, 44260), (116, 44266),

Gene: Edmundo_4 Start: 3516, Stop: 4121, Start Num: 26

Candidate Starts for Edmundo_4:

(Start: 21 @3498 has 25 MA's), (22, 3501), (Start: 26 @3516 has 4 MA's), (31, 3546), (38, 3597), (48, 3657), (69, 3747), (72, 3756), (95, 3951), (100, 3972), (126, 4104),

Gene: Franzy_64 Start: 44565, Stop: 45143, Start Num: 21

Candidate Starts for Franzy_64:

(Start: 21 @44565 has 25 MA's), (25, 44580), (50, 44742), (53, 44769), (65, 44838), (102, 45081),

Gene: Fresco_1 Start: 1, Stop: 606, Start Num: 24

Candidate Starts for Fresco_1:

(Start: 24 @1 has 8 MA's), (38, 85), (40, 112), (46, 136), (53, 175), (81, 349), (97, 472), (112, 553), (119, 592), (120, 595), (121, 601),

Gene: Gadget_1 Start: 1, Stop: 693, Start Num: 15

Candidate Starts for Gadget_1:

(Start: 15 @1 has 38 MA's), (Start: 19 @22 has 1 MA's), (Start: 28 @64 has 1 MA's), (Start: 30 @73 has 6 MA's), (40, 151), (46, 175), (53, 214), (60, 253), (72, 307), (73, 313), (76, 340), (92, 478), (103, 541),

Gene: Gervas_1 Start: 1, Stop: 693, Start Num: 15

Candidate Starts for Gervas_1:

(Start: 15 @1 has 38 MA's), (Start: 19 @22 has 1 MA's), (Start: 28 @64 has 1 MA's), (Start: 30 @73 has 6 MA's), (40, 151), (46, 175), (53, 214), (60, 253), (72, 307), (73, 313), (76, 340), (92, 478), (103, 541),

Gene: GlenHope_1 Start: 1, Stop: 693, Start Num: 15

Candidate Starts for GlenHope_1:

(Start: 15 @1 has 38 MA's), (Start: 19 @22 has 1 MA's), (Start: 28 @64 has 1 MA's), (Start: 30 @73 has 6 MA's), (40, 151), (46, 175), (53, 214), (60, 253), (72, 307), (73, 313), (76, 340), (92, 478), (103, 541),

Gene: GravityBall_69 Start: 44845, Stop: 45375, Start Num: 21

Candidate Starts for GravityBall_69:

(Start: 21 @44845 has 25 MA's), (51, 44971), (53, 44989), (67, 45064), (82, 45166), (85, 45184),

Gene: Grekaycon_70 Start: 45072, Stop: 45602, Start Num: 21

Candidate Starts for Grekaycon_70:

(Start: 21 @45072 has 25 MA's), (51, 45198), (53, 45216), (67, 45291), (74, 45321), (83, 45396), (85, 45411), (99, 45519), (104, 45540),

Gene: Halfpint_1 Start: 1, Stop: 699, Start Num: 15

Candidate Starts for Halfpint_1:

(Start: 15 @1 has 38 MA's), (Start: 19 @22 has 1 MA's), (Start: 28 @64 has 1 MA's), (Start: 30 @73 has 6 MA's), (40, 151), (46, 175), (53, 214), (60, 253), (72, 307), (73, 313), (76, 340), (92, 478), (103, 541), (128, 694),

Gene: HarveySr_1 Start: 1, Stop: 693, Start Num: 15

Candidate Starts for HarveySr_1:

(Start: 15 @1 has 38 MA's), (Start: 19 @22 has 1 MA's), (Start: 28 @64 has 1 MA's), (Start: 30 @73 has 6 MA's), (40, 151), (46, 175), (53, 214), (60, 253), (72, 307), (73, 313), (76, 340), (92, 478), (103, 541),

Gene: Heathcliff_1 Start: 1, Stop: 693, Start Num: 15

Candidate Starts for Heathcliff_1:

(Start: 15 @1 has 38 MA's), (Start: 19 @22 has 1 MA's), (Start: 28 @64 has 1 MA's), (Start: 30 @73 has 6 MA's), (40, 151), (46, 175), (53, 214), (60, 253), (72, 307), (73, 313), (76, 340), (92, 478), (103, 541),

Gene: JKerns_69 Start: 45051, Stop: 45626, Start Num: 21

Candidate Starts for JKerns_69:

(Start: 21 @45051 has 25 MA's), (51, 45222), (53, 45240), (67, 45315), (74, 45345), (83, 45420), (85, 45435), (99, 45543), (104, 45564),

Gene: Jace_85 Start: 47046, Stop: 47594, Start Num: 28

Candidate Starts for Jace_85:

(Start: 28 @47046 has 1 MA's), (53, 47202), (56, 47223), (76, 47304), (77, 47307), (84, 47367), (117, 47559), (121, 47577), (122, 47586), (123, 47589),

Gene: Jackstina_1 Start: 22, Stop: 693, Start Num: 19

Candidate Starts for Jackstina_1:

(Start: 15 @1 has 38 MA's), (Start: 19 @22 has 1 MA's), (Start: 28 @64 has 1 MA's), (Start: 30 @73 has 6 MA's), (40, 151), (46, 175), (53, 214), (72, 307), (73, 313), (76, 340), (92, 478), (103, 541),

Gene: Jawnski_65 Start: 44074, Stop: 44652, Start Num: 21

Candidate Starts for Jawnski_65:

(Start: 21 @44074 has 25 MA's), (25, 44089), (53, 44278), (65, 44347), (102, 44590),

Gene: Jordan_70 Start: 45176, Stop: 45751, Start Num: 21

Candidate Starts for Jordan_70:

(Start: 21 @45176 has 25 MA's), (51, 45347), (53, 45365), (67, 45440), (74, 45470), (83, 45545), (85, 45560), (99, 45668),

Gene: Kamiyu_1 Start: 73, Stop: 693, Start Num: 30

Candidate Starts for Kamiyu_1:

(Start: 15 @1 has 38 MA's), (Start: 19 @22 has 1 MA's), (Start: 28 @64 has 1 MA's), (Start: 30 @73 has 6 MA's), (40, 151), (46, 175), (53, 214), (60, 253), (72, 307), (73, 313), (76, 340), (92, 478), (103, 541),

Gene: King2_64 Start: 44610, Stop: 45188, Start Num: 21

Candidate Starts for King2_64:

(Start: 21 @44610 has 25 MA's), (25, 44625), (53, 44814), (65, 44883), (102, 45126),

Gene: Kovu_5 Start: 3470, Stop: 4075, Start Num: 26

Candidate Starts for Kovu_5:

(Start: 14 @3425 has 2 MA's), (Start: 21 @3452 has 25 MA's), (Start: 26 @3470 has 4 MA's), (31, 3500), (38, 3551), (46, 3602), (70, 3704), (73, 3716), (87, 3845), (98, 3923), (124, 4052), (125, 4055),

Gene: Kronus_1 Start: 1, Stop: 699, Start Num: 15

Candidate Starts for Kronus_1:

(Start: 15 @1 has 38 MA's), (Start: 19 @22 has 1 MA's), (Start: 28 @64 has 1 MA's), (Start: 30 @73 has 6 MA's), (40, 151), (46, 175), (53, 214), (60, 253), (72, 307), (73, 313), (76, 340), (92, 478), (103, 541), (128, 694),

Gene: Laroye_5 Start: 3276, Stop: 3899, Start Num: 21

Candidate Starts for Laroye_5:

(Start: 21 @3276 has 25 MA's), (22, 3279), (Start: 26 @3294 has 4 MA's), (31, 3324), (38, 3375), (46, 3426), (48, 3435), (69, 3525), (72, 3534), (73, 3540), (76, 3567), (95, 3729), (100, 3750), (126, 3882),

Gene: LeeroyJ_70 Start: 44774, Stop: 45304, Start Num: 21

Candidate Starts for LeeroyJ_70:

(Start: 21 @44774 has 25 MA's), (51, 44900), (53, 44918), (82, 45095), (85, 45113),

Gene: LestyG_1 Start: 1, Stop: 693, Start Num: 15

Candidate Starts for LestyG_1:

(Start: 15 @1 has 38 MA's), (Start: 19 @22 has 1 MA's), (Start: 28 @64 has 1 MA's), (Start: 30 @73 has 6 MA's), (40, 151), (46, 175), (53, 214), (60, 253), (72, 307), (73, 313), (76, 340), (92, 478), (103, 541),

Gene: LiSara_5 Start: 3325, Stop: 3930, Start Num: 26

Candidate Starts for LiSara_5:

(16, 3286), (Start: 21 @3307 has 25 MA's), (22, 3310), (Start: 26 @3325 has 4 MA's), (31, 3355), (38, 3406), (46, 3457), (48, 3466), (69, 3556), (72, 3565), (73, 3571), (76, 3598), (95, 3760), (100, 3781), (126, 3913),

Gene: Ligma_1 Start: 1, Stop: 606, Start Num: 24

Candidate Starts for Ligma_1:

(Start: 24 @1 has 8 MA's), (38, 85), (40, 112), (46, 136), (53, 175), (81, 349), (97, 472), (112, 553), (119, 592), (120, 595), (121, 601),

Gene: Margaery_97 Start: 55238, Stop: 55930, Start Num: 18

Candidate Starts for Margaery_97:

(8, 55121), (Start: 18 @55238 has 1 MA's), (Start: 20 @55247 has 5 MA's), (36, 55334), (55, 55442), (59, 55460), (61, 55475), (85, 55631), (111, 55796),

Gene: Mariokart_1 Start: 1, Stop: 612, Start Num: 24

Candidate Starts for Mariokart_1:

(Start: 24 @1 has 8 MA's), (Start: 30 @40 has 6 MA's), (38, 91), (46, 142), (53, 181), (68, 262), (73, 280), (76, 307), (109, 526), (112, 559), (120, 601),

Gene: Marley1013_1 Start: 1, Stop: 693, Start Num: 15

Candidate Starts for Marley1013_1:

(Start: 15 @1 has 38 MA's), (Start: 19 @22 has 1 MA's), (Start: 28 @64 has 1 MA's), (Start: 30 @73 has 6 MA's), (40, 151), (46, 175), (53, 214), (60, 253), (72, 307), (73, 313), (76, 340), (92, 478), (103, 541),

Gene: Martha_69 Start: 45008, Stop: 45538, Start Num: 21

Candidate Starts for Martha_69:

(Start: 21 @45008 has 25 MA's), (51, 45134), (53, 45152), (67, 45227), (74, 45257), (83, 45332), (85, 45347), (99, 45455),

Gene: Matzah_98 Start: 54900, Stop: 55583, Start Num: 20

Candidate Starts for Matzah_98:

(Start: 20 @54900 has 5 MA's), (36, 54987), (55, 55095), (59, 55113), (61, 55128), (66, 55158), (67, 55164), (78, 55218), (79, 55254), (85, 55284), (88, 55335), (90, 55344), (101, 55401), (111, 55449),

Gene: Megan_1 Start: 1, Stop: 666, Start Num: 23

Candidate Starts for Megan_1:

(Start: 23 @1 has 2 MA's), (39, 97), (50, 154), (55, 190), (58, 205), (61, 223), (62, 229), (64, 244), (66, 253), (69, 265), (86, 403), (108, 517), (110, 529), (127, 637),

Gene: MementoMori_97 Start: 54789, Stop: 55472, Start Num: 20

Candidate Starts for MementoMori_97:

(Start: 20 @54789 has 5 MA's), (36, 54876), (55, 54984), (59, 55002), (61, 55017), (66, 55047), (67, 55053), (78, 55107), (79, 55143), (85, 55173), (101, 55290), (111, 55338),

Gene: MenE_48 Start: 29392, Stop: 29925, Start Num: 27

Candidate Starts for MenE_48:

(4, 29158), (5, 29170), (9, 29248), (Start: 27 @29392 has 9 MA's), (32, 29416), (40, 29494), (46, 29518), (47, 29521), (53, 29557), (57, 29581), (70, 29620), (75, 29650), (76, 29659),

Gene: MmasiCarm_1 Start: 1, Stop: 693, Start Num: 15

Candidate Starts for MmasiCarm_1:

(Start: 15 @1 has 38 MA's), (Start: 19 @22 has 1 MA's), (Start: 28 @64 has 1 MA's), (Start: 30 @73 has 6 MA's), (40, 151), (46, 175), (53, 214), (60, 253), (72, 307), (73, 313), (76, 340), (92, 478), (103, 541),

Gene: Mortcellus_1 Start: 1, Stop: 699, Start Num: 15

Candidate Starts for Mortcellus_1:

(Start: 15 @1 has 38 MA's), (Start: 19 @22 has 1 MA's), (Start: 28 @64 has 1 MA's), (Start: 30 @73 has 6 MA's), (40, 151), (46, 175), (53, 214), (60, 253), (72, 307), (73, 313), (76, 340), (92, 478), (103, 541), (128, 694),

Gene: Morty007_1 Start: 73, Stop: 693, Start Num: 30

Candidate Starts for Morty007_1:

(Start: 15 @1 has 38 MA's), (Start: 19 @22 has 1 MA's), (Start: 28 @64 has 1 MA's), (Start: 30 @73 has 6 MA's), (40, 151), (46, 175), (53, 214), (60, 253), (72, 307), (73, 313), (76, 340), (92, 478), (103, 541),

Gene: Mufasa8_91 Start: 53065, Stop: 53769, Start Num: 20

Candidate Starts for Mufasa8_91:

(13, 53020), (Start: 20 @53065 has 5 MA's), (41, 53197), (42, 53200), (44, 53209), (64, 53332), (71, 53359), (80, 53440), (91, 53530), (93, 53536), (111, 53635),

Gene: NathanVaag_65 Start: 44298, Stop: 44876, Start Num: 21

Candidate Starts for NathanVaag_65:

(Start: 21 @44298 has 25 MA's), (25, 44313), (Start: 34 @44361 has 1 MA's), (53, 44502), (65, 44571), (91, 44763), (102, 44814), (113, 44865),

Gene: Neos5_1 Start: 1, Stop: 693, Start Num: 15

Candidate Starts for Neos5_1:

(Start: 15 @1 has 38 MA's), (Start: 19 @22 has 1 MA's), (Start: 28 @64 has 1 MA's), (Start: 30 @73 has 6 MA's), (40, 151), (46, 175), (53, 214), (60, 253), (72, 307), (73, 313), (76, 340), (92, 478), (103, 541),

Gene: Nicole72_1 Start: 1, Stop: 666, Start Num: 23

Candidate Starts for Nicole72_1:

(Start: 23 @1 has 2 MA's), (39, 97), (55, 190), (61, 223), (62, 229), (64, 244), (66, 253), (67, 259), (108, 517), (127, 637),

Gene: Nozo_1 Start: 1, Stop: 693, Start Num: 15

Candidate Starts for Nozo_1:

(Start: 15 @1 has 38 MA's), (Start: 19 @22 has 1 MA's), (Start: 28 @64 has 1 MA's), (Start: 30 @73 has 6 MA's), (40, 151), (46, 175), (53, 214), (60, 253), (72, 307), (73, 313), (76, 340), (92, 478), (103, 541),

Gene: Obutu_1 Start: 1, Stop: 693, Start Num: 15

Candidate Starts for Obutu_1:

(Start: 15 @1 has 38 MA's), (Start: 19 @22 has 1 MA's), (Start: 28 @64 has 1 MA's), (Start: 30 @73 has 6 MA's), (40, 151), (46, 175), (53, 214), (60, 253), (72, 307), (73, 313), (76, 340), (92, 478), (103, 541),

Gene: OrangeOswald_1 Start: 1, Stop: 693, Start Num: 15

Candidate Starts for OrangeOswald_1:

(Start: 15 @1 has 38 MA's), (Start: 19 @22 has 1 MA's), (Start: 28 @64 has 1 MA's), (Start: 30 @73 has 6 MA's), (40, 151), (46, 175), (53, 214), (60, 253), (72, 307), (73, 313), (76, 340), (92, 478), (103, 541),

Gene: Phaedrus_1 Start: 73, Stop: 693, Start Num: 30

Candidate Starts for Phaedrus_1:

(Start: 15 @1 has 38 MA's), (Start: 19 @22 has 1 MA's), (Start: 28 @64 has 1 MA's), (Start: 30 @73 has 6 MA's), (40, 151), (46, 175), (53, 214), (60, 253), (72, 307), (73, 313), (76, 340), (92, 478), (103, 541),

Gene: Phayeta_1 Start: 1, Stop: 699, Start Num: 15

Candidate Starts for Phayeta_1:

(Start: 15 @1 has 38 MA's), (Start: 19 @22 has 1 MA's), (Start: 28 @64 has 1 MA's), (Start: 30 @73 has 6 MA's), (40, 151), (46, 175), (53, 214), (60, 253), (72, 307), (73, 313), (76, 340), (92, 478), (103, 541), (128, 694),

Gene: Philly_1 Start: 1, Stop: 693, Start Num: 15

Candidate Starts for Philly_1:

(Start: 15 @1 has 38 MA's), (Start: 19 @22 has 1 MA's), (Start: 28 @64 has 1 MA's), (Start: 30 @73 has 6 MA's), (40, 151), (46, 175), (53, 214), (60, 253), (72, 307), (73, 313), (76, 340), (92, 478), (103, 541),

Gene: Phlyer_1 Start: 1, Stop: 693, Start Num: 15

Candidate Starts for Phlyer_1:

(Start: 15 @1 has 38 MA's), (Start: 19 @22 has 1 MA's), (Start: 28 @64 has 1 MA's), (Start: 30 @73 has 6 MA's), (40, 151), (46, 175), (53, 214), (60, 253), (72, 307), (73, 313), (76, 340), (92, 478), (103, 541),

Gene: Phonegingi_46 Start: 29171, Stop: 29704, Start Num: 27

Candidate Starts for Phonegingi_46:

(Start: 27 @29171 has 9 MA's), (32, 29195), (40, 29273), (46, 29297), (47, 29300), (53, 29336), (57, 29360), (70, 29399), (75, 29429), (76, 29438), (94, 29585), (121, 29693),

Gene: Piccoletto_66 Start: 44460, Stop: 45038, Start Num: 21

Candidate Starts for Piccoletto_66:

(Start: 21 @44460 has 25 MA's), (25, 44475), (Start: 34 @44523 has 1 MA's), (53, 44664), (65, 44733), (102, 44976), (113, 45027),

Gene: Pickles13_45 Start: 29439, Stop: 29972, Start Num: 27

Candidate Starts for Pickles13_45:

(4, 29202), (7, 29286), (Start: 27 @29439 has 9 MA's), (32, 29463), (40, 29541), (46, 29565), (47, 29568), (53, 29604), (57, 29628), (70, 29667), (75, 29697), (94, 29853),

Gene: Pipefish_1 Start: 1, Stop: 693, Start Num: 15

Candidate Starts for Pipefish_1:

(Start: 15 @1 has 38 MA's), (Start: 19 @22 has 1 MA's), (Start: 28 @64 has 1 MA's), (Start: 30 @73 has 6 MA's), (40, 151), (46, 175), (53, 214), (60, 253), (72, 307), (73, 313), (76, 340), (92, 478), (103, 541),

Gene: Pippa_70 Start: 45043, Stop: 45573, Start Num: 21

Candidate Starts for Pippa_70:

(Start: 21 @45043 has 25 MA's), (51, 45169), (53, 45187), (67, 45262), (74, 45292), (83, 45367), (85, 45382), (99, 45490), (104, 45511),

Gene: RagingRooster_1 Start: 1, Stop: 693, Start Num: 15

Candidate Starts for RagingRooster_1:

(Start: 15 @1 has 38 MA's), (Start: 19 @22 has 1 MA's), (Start: 28 @64 has 1 MA's), (Start: 30 @73 has 6 MA's), (40, 151), (46, 175), (53, 214), (60, 253), (72, 307), (73, 313), (76, 340), (92, 478), (103, 541),

Gene: Rita1961_1 Start: 1, Stop: 693, Start Num: 15

Candidate Starts for Rita1961_1:

(Start: 15 @1 has 38 MA's), (Start: 19 @22 has 1 MA's), (Start: 28 @64 has 1 MA's), (Start: 30 @73 has 6 MA's), (40, 151), (46, 175), (53, 214), (60, 253), (72, 307), (73, 313), (76, 340), (92, 478), (103, 541),

Gene: RomaT_1 Start: 1, Stop: 693, Start Num: 15

Candidate Starts for RomaT_1:

(Start: 15 @1 has 38 MA's), (Start: 19 @22 has 1 MA's), (Start: 28 @64 has 1 MA's), (Start: 30 @73 has 6 MA's), (40, 151), (46, 175), (53, 214), (60, 253), (72, 307), (73, 313), (76, 340), (92, 478), (103, 541),

Gene: Salgado_5 Start: 3284, Stop: 3907, Start Num: 21

Candidate Starts for Salgado_5:

(Start: 21 @3284 has 25 MA's), (22, 3287), (Start: 26 @3302 has 4 MA's), (31, 3332), (38, 3383), (46, 3434), (48, 3443), (69, 3533), (72, 3542), (73, 3548), (76, 3575), (95, 3737), (100, 3758), (126, 3890),

Gene: Shade_69 Start: 44814, Stop: 45389, Start Num: 21

Candidate Starts for Shade_69:

(Start: 21 @44814 has 25 MA's), (51, 44985), (53, 45003), (67, 45078), (74, 45108), (83, 45183), (85, 45198), (99, 45306), (104, 45327),

Gene: Shatter_1 Start: 1, Stop: 606, Start Num: 24

Candidate Starts for Shatter_1:

(Start: 24 @1 has 8 MA's), (38, 85), (40, 112), (46, 136), (53, 175), (81, 349), (97, 472), (112, 553), (119, 592), (120, 595), (121, 601),

Gene: Shrooms_5 Start: 3310, Stop: 3960, Start Num: 14

Candidate Starts for Shrooms_5:

(3, 3046), (Start: 14 @3310 has 2 MA's), (Start: 26 @3355 has 4 MA's), (31, 3385), (38, 3436), (45, 3484), (46, 3487), (72, 3595), (73, 3601), (105, 3826), (118, 3889),

Gene: Sicarius2_71 Start: 43199, Stop: 43729, Start Num: 33

Candidate Starts for Sicarius2_71:

(Start: 33 @43199 has 2 MA's), (37, 43235), (38, 43244), (53, 43343), (67, 43421), (76, 43469), (89, 43592), (114, 43724),

Gene: Sisko_1 Start: 1, Stop: 600, Start Num: 24

Candidate Starts for Sisko_1:

(Start: 24 @1 has 8 MA's), (Start: 30 @28 has 6 MA's), (38, 79), (43, 118), (76, 295), (119, 586), (120, 589),

Gene: SlippinJimmy_1 Start: 22, Stop: 693, Start Num: 19

Candidate Starts for SlippinJimmy_1:

(Start: 15 @1 has 38 MA's), (Start: 19 @22 has 1 MA's), (Start: 28 @64 has 1 MA's), (Start: 30 @73 has 6 MA's), (40, 151), (46, 175), (53, 214), (60, 253), (72, 307), (73, 313), (76, 340), (92, 478), (103, 541),

Gene: Sonali_86 Start: 53450, Stop: 54043, Start Num: 34

Candidate Starts for Sonali_86:

(1, 52859), (2, 52970), (11, 53303), (29, 53429), (Start: 34 @53450 has 1 MA's), (49, 53558), (63, 53642), (110, 53945), (112, 53969),

Gene: Sonny_69 Start: 44737, Stop: 45312, Start Num: 21

Candidate Starts for Sonny_69:

(Start: 21 @44737 has 25 MA's), (51, 44908), (53, 44926), (67, 45001), (74, 45031), (83, 45106), (85, 45121), (99, 45229), (104, 45250),

Gene: StevieBAY_70 Start: 45067, Stop: 45597, Start Num: 21

Candidate Starts for StevieBAY_70:

(Start: 21 @45067 has 25 MA's), (51, 45193), (53, 45211), (67, 45286), (82, 45388), (85, 45406),

Gene: SynergyX_1 Start: 1, Stop: 693, Start Num: 15

Candidate Starts for SynergyX_1:

(Start: 15 @1 has 38 MA's), (Start: 19 @22 has 1 MA's), (Start: 28 @64 has 1 MA's), (Start: 30 @73 has 6 MA's), (40, 151), (46, 175), (53, 214), (60, 253), (72, 307), (73, 313), (76, 340), (92, 478), (103, 541),

Gene: TaeYoung_70 Start: 44980, Stop: 45510, Start Num: 21

Candidate Starts for TaeYoung_70:

(Start: 21 @44980 has 25 MA's), (51, 45106), (53, 45124), (67, 45199), (74, 45229), (83, 45304), (85, 45319), (99, 45427), (104, 45448),

Gene: Timinator_70 Start: 44887, Stop: 45417, Start Num: 21

Candidate Starts for Timinator_70:

(Start: 21 @44887 has 25 MA's), (51, 45013), (53, 45031), (82, 45208), (85, 45226),

Gene: TurkishDelight_122 Start: 89500, Stop: 90093, Start Num: 17

Candidate Starts for TurkishDelight_122:

(Start: 17 @89500 has 1 MA's), (Start: 21 @89518 has 25 MA's), (35, 89584), (49, 89689),

Gene: Tydolla_1 Start: 73, Stop: 693, Start Num: 30

Candidate Starts for Tydolla_1:

(Start: 15 @1 has 38 MA's), (Start: 19 @22 has 1 MA's), (Start: 28 @64 has 1 MA's), (Start: 30 @73 has 6 MA's), (40, 151), (46, 175), (53, 214), (60, 253), (72, 307), (73, 313), (76, 340), (92, 478), (103, 541),

Gene: Waltz_5 Start: 3398, Stop: 4048, Start Num: 14

Candidate Starts for Waltz_5:

(Start: 14 @3398 has 2 MA's), (Start: 26 @3443 has 4 MA's), (31, 3473), (38, 3524), (45, 3572), (72, 3683), (73, 3689), (118, 3977),

Gene: Warren_46 Start: 29178, Stop: 29711, Start Num: 27

Candidate Starts for Warren_46:

(Start: 27 @29178 has 9 MA's), (32, 29202), (40, 29280), (46, 29304), (47, 29307), (54, 29346), (57, 29367), (70, 29406), (75, 29436), (76, 29445), (94, 29592),

Gene: Wheelbite_5 Start: 3393, Stop: 3998, Start Num: 26

Candidate Starts for Wheelbite_5:

(Start: 21 @3375 has 25 MA's), (22, 3378), (Start: 26 @3393 has 4 MA's), (31, 3423), (38, 3474), (48, 3534), (72, 3633), (95, 3828), (100, 3849), (126, 3981),

Gene: Wyborn_70 Start: 43934, Stop: 44464, Start Num: 33

Candidate Starts for Wyborn_70:

(Start: 33 @43934 has 2 MA's), (37, 43970), (38, 43979), (53, 44078), (67, 44156), (76, 44204), (89, 44327), (114, 44459),

Gene: Yago84_1 Start: 1, Stop: 600, Start Num: 24

Candidate Starts for Yago84_1:

(Start: 24 @1 has 8 MA's), (Start: 30 @28 has 6 MA's), (38, 79), (43, 118), (76, 295), (96, 463), (119, 586), (120, 589),

Gene: Yahalom_1 Start: 73, Stop: 693, Start Num: 30

Candidate Starts for Yahalom_1:

(Start: 15 @1 has 38 MA's), (Start: 19 @22 has 1 MA's), (Start: 28 @64 has 1 MA's), (Start: 30 @73 has 6 MA's), (40, 151), (46, 175), (53, 214), (60, 253), (72, 307), (73, 313), (76, 340), (92, 478), (103, 541),

Gene: Yinz_1 Start: 1, Stop: 693, Start Num: 15

Candidate Starts for Yinz_1:

(Start: 15 @1 has 38 MA's), (Start: 19 @22 has 1 MA's), (Start: 28 @64 has 1 MA's), (Start: 30 @73 has 6 MA's), (40, 151), (46, 175), (53, 214), (60, 253), (72, 307), (73, 313), (76, 340), (92, 478), (103,

541),

Gene: Zartrosa_71 Start: 45067, Stop: 45642, Start Num: 21

Candidate Starts for Zartrosa_71:

(Start: 21 @45067 has 25 MA's), (51, 45238), (53, 45256), (67, 45331), (74, 45361), (83, 45436), (85, 45451), (99, 45559), (104, 45580),