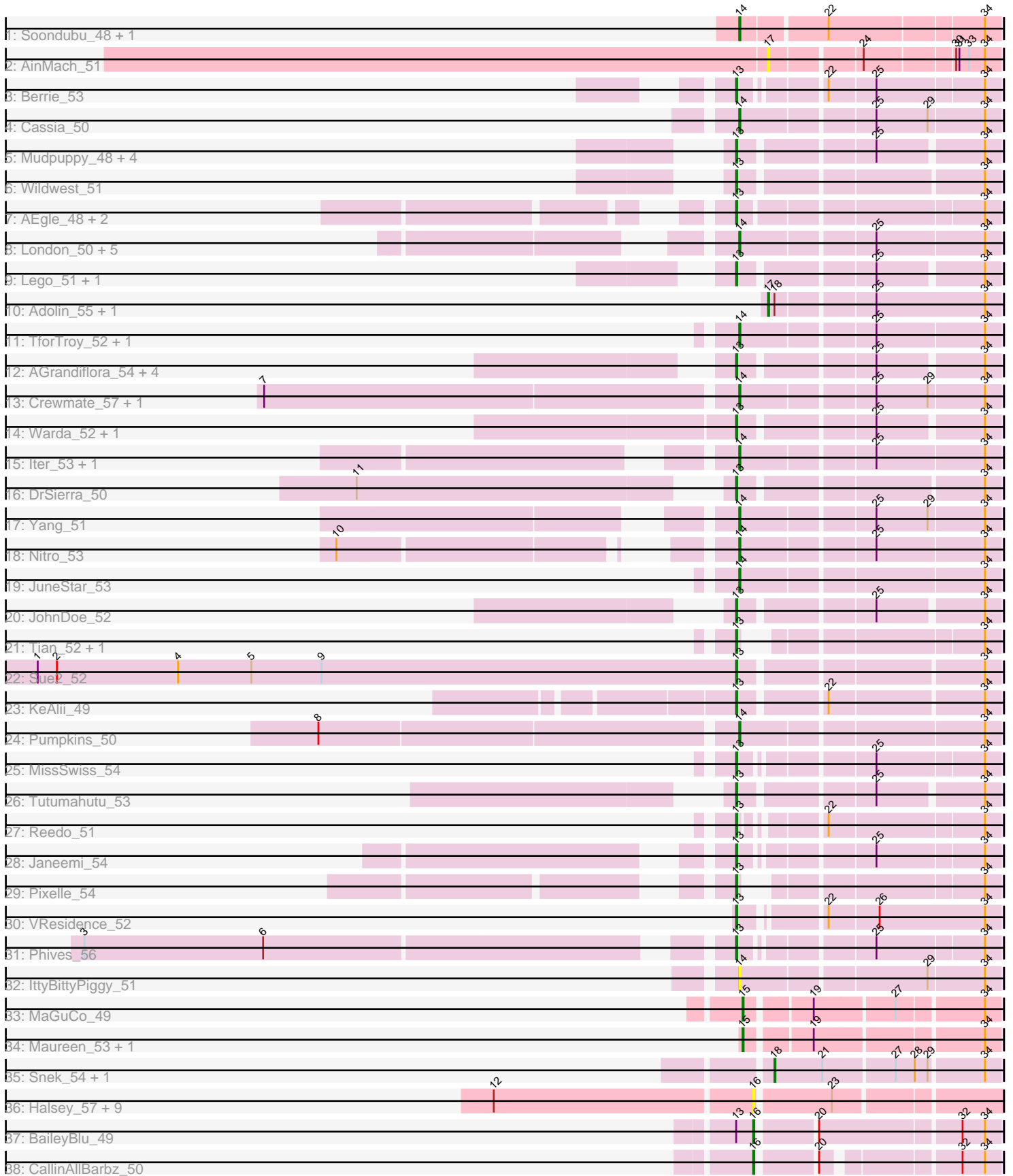


Pham 195586



Note: Tracks are now grouped by subcluster and scaled. Switching in subcluster is indicated by changes in track color. Track scale is now set by default to display the region 30 bp upstream of start 1 to 30 bp downstream of the last possible start. If this default region is judged to be packed too tightly with annotated starts, the track will be further scaled to only show that region of the ORF with annotated starts. This action will be indicated by adding "Zoomed" to the title. For starts, yellow indicates the location of called starts comprised solely of Glimmer/GeneMark auto-annotations, green indicates the location of called starts with at least 1 manual gene annotation.

Pham 195586 Report

This analysis was run 12/09/24 on database version 580.

Pham number 195586 has 72 members, 20 are drafts.

Phages represented in each track:

- Track 1 : Soondubu_48, Exile_46
- Track 2 : AinMach_51
- Track 3 : Berrie_53
- Track 4 : Cassia_50
- Track 5 : Mudpuppy_48, Community_55, Cyan_52, Lizalica_51, Tuck_55
- Track 6 : Wildwest_51
- Track 7 : AEgle_48, Adumb2043_49, Turab_49
- Track 8 : London_50, Jstan_52, Elezi_50, Niobe_50, Asa16_50, Eraser_50
- Track 9 : Lego_51, Kaylissa_53
- Track 10 : Adolin_55, DrManhattan_54
- Track 11 : TforTroy_52, Tallboi_51
- Track 12 : AGrandiflora_54, YesChef_52, Simpson_54, Powerpuff_54, Joemato_52
- Track 13 : Crewmate_57, ObiToo_56
- Track 14 : Warda_52, Tbone_52
- Track 15 : Iter_53, Ascela_53
- Track 16 : DrSierra_50
- Track 17 : Yang_51
- Track 18 : Nitro_53
- Track 19 : JuneStar_53
- Track 20 : JohnDoe_52
- Track 21 : Tian_52, Amyev_53
- Track 22 : Sue2_52
- Track 23 : KeAlii_49
- Track 24 : Pumpkins_50
- Track 25 : MissSwiss_54
- Track 26 : Tutumahutu_53
- Track 27 : Reedo_51
- Track 28 : Janeemi_54
- Track 29 : Pixelle_54
- Track 30 : VResidence_52
- Track 31 : Phives_56
- Track 32 : IttyBittyPiggy_51
- Track 33 : MaGuCo_49
- Track 34 : Maureen_53, Liebe_53
- Track 35 : Snek_54, Tweety19_55
- Track 36 : Halsey_57, Cappuccino_47, Ashes_52, Mysterium_46, Moss_54, Donkey_48, Gambol_48, Sooty_48, Kalimba_47, SpecialK_53

- Track 37 : BaileyBlu_49
- Track 38 : CallinAllBarbz_50

Summary of Final Annotations (See graph section above for start numbers):

The start number called the most often in the published annotations is 13, it was called in 26 of the 52 non-draft genes in the pham.

Genes that call this "Most Annotated" start:

- AEgle_48, AGrandiflora_54, Adumb2043_49, Amyev_53, Berrie_53, Community_55, Cyan_52, DrSierra_50, Janeemi_54, Joemato_52, JohnDoe_52, Kaylissa_53, KeAlii_49, Lego_51, Lizalica_51, MissSwiss_54, Mudpuppy_48, Phives_56, Pixelle_54, Powerpuff_54, Reedo_51, Simpson_54, Sue2_52, Tbone_52, Tian_52, Tuck_55, Turab_49, Tutumahutu_53, VResidence_52, Warda_52, Wildwest_51, YesChef_52,

Genes that have the "Most Annotated" start but do not call it:

- BaileyBlu_49,

Genes that do not have the "Most Annotated" start:

- Adolin_55, AinMach_51, Asa16_50, Ascela_53, Ashes_52, CallinAllBarbz_50, Cappuccino_47, Cassia_50, Crewmate_57, Donkey_48, DrManhattan_54, Elezi_50, Eraser_50, Exile_46, Gambol_48, Halsey_57, Iter_53, IttyBittyPiggy_51, Jstan_52, JuneStar_53, Kalimba_47, Liebe_53, London_50, MaGuCo_49, Maureen_53, Moss_54, Mysterium_46, Niobe_50, Nitro_53, ObiToo_56, Pumpkins_50, Snek_54, Soondubu_48, Sooty_48, SpecialK_53, Tallboi_51, TforTroy_52, Tweety19_55, Yang_51,

Summary by start number:

Start 13:

- Found in 33 of 72 (45.8%) of genes in pham
- Manual Annotations of this start: 26 of 52
- Called 97.0% of time when present
- Phage (with cluster) where this start called: AEgle_48 (AZ1), AGrandiflora_54 (AZ1), Adumb2043_49 (AZ1), Amyev_53 (AZ1), Berrie_53 (AZ1), Community_55 (AZ1), Cyan_52 (AZ1), DrSierra_50 (AZ1), Janeemi_54 (AZ1), Joemato_52 (AZ1), JohnDoe_52 (AZ1), Kaylissa_53 (AZ1), KeAlii_49 (AZ1), Lego_51 (AZ1), Lizalica_51 (AZ1), MissSwiss_54 (AZ1), Mudpuppy_48 (AZ1), Phives_56 (AZ1), Pixelle_54 (AZ1), Powerpuff_54 (AZ1), Reedo_51 (AZ1), Simpson_54 (AZ1), Sue2_52 (AZ1), Tbone_52 (AZ1), Tian_52 (AZ1), Tuck_55 (AZ1), Turab_49 (AZ1), Tutumahutu_53 (AZ1), VResidence_52 (AZ1), Warda_52 (AZ1), Wildwest_51 (AZ1), YesChef_52 (AZ1),

Start 14:

- Found in 20 of 72 (27.8%) of genes in pham
- Manual Annotations of this start: 17 of 52
- Called 100.0% of time when present
- Phage (with cluster) where this start called: Asa16_50 (AZ1), Ascela_53 (AZ1), Cassia_50 (AZ1), Crewmate_57 (AZ1), Elezi_50 (AZ1), Eraser_50 (AZ1), Exile_46

(AZ), Iter_53 (AZ1), IttyBittyPiggy_51 (AZ1), Jstan_52 (AZ1), JuneStar_53 (AZ1), London_50 (AZ1), Niobe_50 (AZ1), Nitro_53 (AZ1), ObiToo_56 (AZ1), Pumpkins_50 (AZ1), Soondubu_48 (AZ), Tallboi_51 (AZ1), TforTroy_52 (AZ1), Yang_51 (AZ1),

Start 15:

- Found in 3 of 72 (4.2%) of genes in pham
- Manual Annotations of this start: 3 of 52
- Called 100.0% of time when present
- Phage (with cluster) where this start called: Liebe_53 (AZ2), MaGuCo_49 (AZ2), Maureen_53 (AZ2),

Start 16:

- Found in 12 of 72 (16.7%) of genes in pham
- Manual Annotations of this start: 2 of 52
- Called 100.0% of time when present
- Phage (with cluster) where this start called: Ashes_52 (AZ5), BaileyBlu_49 (FP), CallinAllBarbz_50 (FP), Cappuccino_47 (AZ5), Donkey_48 (AZ5), Gambol_48 (AZ5), Halsey_57 (AZ5), Kalimba_47 (AZ5), Moss_54 (AZ5), Mysterium_46 (AZ5), Sooty_48 (AZ5), SpecialK_53 (AZ5),

Start 17:

- Found in 3 of 72 (4.2%) of genes in pham
- Manual Annotations of this start: 2 of 52
- Called 100.0% of time when present
- Phage (with cluster) where this start called: Adolin_55 (AZ1), AinMach_51 (AZ), DrManhattan_54 (AZ1),

Start 18:

- Found in 4 of 72 (5.6%) of genes in pham
- Manual Annotations of this start: 2 of 52
- Called 50.0% of time when present
- Phage (with cluster) where this start called: Snek_54 (AZ3), Tweety19_55 (AZ3),

Summary by clusters:

There are 6 clusters represented in this pham: FP, AZ, AZ1, AZ2, AZ3, AZ5,

Info for manual annotations of cluster AZ:

- Start number 14 was manually annotated 1 time for cluster AZ.

Info for manual annotations of cluster AZ1:

- Start number 13 was manually annotated 26 times for cluster AZ1.
- Start number 14 was manually annotated 16 times for cluster AZ1.
- Start number 17 was manually annotated 2 times for cluster AZ1.

Info for manual annotations of cluster AZ2:

- Start number 15 was manually annotated 3 times for cluster AZ2.

Info for manual annotations of cluster AZ3:

- Start number 18 was manually annotated 2 times for cluster AZ3.

Info for manual annotations of cluster FP:

- Start number 16 was manually annotated 2 times for cluster FP.

Gene Information:

Gene: AEgle_48 Start: 36313, Stop: 36537, Start Num: 13

Candidate Starts for AEgle_48:

(Start: 13 @36313 has 26 MA's), (34, 36523),

Gene: AGrandiflora_54 Start: 37650, Stop: 37871, Start Num: 13

Candidate Starts for AGrandiflora_54:

(Start: 13 @37650 has 26 MA's), (25, 37764), (34, 37857),

Gene: Adolin_55 Start: 36749, Stop: 36955, Start Num: 17

Candidate Starts for Adolin_55:

(Start: 17 @36749 has 2 MA's), (Start: 18 @36755 has 2 MA's), (25, 36839), (34, 36941),

Gene: Adumb2043_49 Start: 36334, Stop: 36558, Start Num: 13

Candidate Starts for Adumb2043_49:

(Start: 13 @36334 has 26 MA's), (34, 36544),

Gene: AinMach_51 Start: 36840, Stop: 37037, Start Num: 17

Candidate Starts for AinMach_51:

(Start: 17 @36840 has 2 MA's), (24, 36918), (30, 36996), (31, 36999), (33, 37008), (34, 37023),

Gene: Amyev_53 Start: 39795, Stop: 39995, Start Num: 13

Candidate Starts for Amyev_53:

(Start: 13 @39795 has 26 MA's), (34, 39981),

Gene: Asa16_50 Start: 37882, Stop: 38112, Start Num: 14

Candidate Starts for Asa16_50:

(Start: 14 @37882 has 17 MA's), (25, 37999), (34, 38098),

Gene: Ascela_53 Start: 37957, Stop: 38187, Start Num: 14

Candidate Starts for Ascela_53:

(Start: 14 @37957 has 17 MA's), (25, 38074), (34, 38173),

Gene: Ashes_52 Start: 33455, Stop: 33667, Start Num: 16

Candidate Starts for Ashes_52:

(12, 33218), (Start: 16 @33455 has 2 MA's), (23, 33521),

Gene: BaileyBlu_49 Start: 35978, Stop: 36187, Start Num: 16

Candidate Starts for BaileyBlu_49:

(Start: 13 @35963 has 26 MA's), (Start: 16 @35978 has 2 MA's), (20, 36026), (32, 36152), (34, 36173),

Gene: Berrie_53 Start: 38048, Stop: 38266, Start Num: 13

Candidate Starts for Berrie_53:

(Start: 13 @38048 has 26 MA's), (22, 38114), (25, 38156), (34, 38252),

Gene: CallinAllBarbz_50 Start: 36450, Stop: 36644, Start Num: 16

Candidate Starts for CallinAllBarbz_50:

(Start: 16 @36450 has 2 MA's), (20, 36498), (32, 36609), (34, 36630),

Gene: Cappuccino_47 Start: 33320, Stop: 33532, Start Num: 16

Candidate Starts for Cappuccino_47:

(12, 33083), (Start: 16 @33320 has 2 MA's), (23, 33386),

Gene: Cassia_50 Start: 37073, Stop: 37303, Start Num: 14

Candidate Starts for Cassia_50:

(Start: 14 @37073 has 17 MA's), (25, 37190), (29, 37238), (34, 37289),

Gene: Community_55 Start: 39440, Stop: 39658, Start Num: 13

Candidate Starts for Community_55:

(Start: 13 @39440 has 26 MA's), (25, 39548), (34, 39644),

Gene: Crewmate_57 Start: 38837, Stop: 39067, Start Num: 14

Candidate Starts for Crewmate_57:

(7, 38405), (Start: 14 @38837 has 17 MA's), (25, 38954), (29, 39002), (34, 39053),

Gene: Cyan_52 Start: 37207, Stop: 37428, Start Num: 13

Candidate Starts for Cyan_52:

(Start: 13 @37207 has 26 MA's), (25, 37321), (34, 37414),

Gene: Donkey_48 Start: 33310, Stop: 33522, Start Num: 16

Candidate Starts for Donkey_48:

(12, 33073), (Start: 16 @33310 has 2 MA's), (23, 33376),

Gene: DrManhattan_54 Start: 36317, Stop: 36523, Start Num: 17

Candidate Starts for DrManhattan_54:

(Start: 17 @36317 has 2 MA's), (Start: 18 @36323 has 2 MA's), (25, 36407), (34, 36509),

Gene: DrSierra_50 Start: 36034, Stop: 36258, Start Num: 13

Candidate Starts for DrSierra_50:

(11, 35728), (Start: 13 @36034 has 26 MA's), (34, 36244),

Gene: Elezi_50 Start: 37880, Stop: 38110, Start Num: 14

Candidate Starts for Elezi_50:

(Start: 14 @37880 has 17 MA's), (25, 37997), (34, 38096),

Gene: Eraser_50 Start: 37889, Stop: 38119, Start Num: 14

Candidate Starts for Eraser_50:

(Start: 14 @37889 has 17 MA's), (25, 38006), (34, 38105),

Gene: Exile_46 Start: 39253, Stop: 39480, Start Num: 14

Candidate Starts for Exile_46:

(Start: 14 @39253 has 17 MA's), (22, 39328), (34, 39466),

Gene: Gambol_48 Start: 33329, Stop: 33541, Start Num: 16

Candidate Starts for Gambol_48:

(12, 33092), (Start: 16 @33329 has 2 MA's), (23, 33395),

Gene: Halsey_57 Start: 33457, Stop: 33669, Start Num: 16

Candidate Starts for Halsey_57:

(12, 33220), (Start: 16 @33457 has 2 MA's), (23, 33523),

Gene: lter_53 Start: 37949, Stop: 38179, Start Num: 14
Candidate Starts for lter_53:
(Start: 14 @37949 has 17 MA's), (25, 38066), (34, 38165),

Gene: ltyBittyPiggy_51 Start: 36661, Stop: 36891, Start Num: 14
Candidate Starts for ltyBittyPiggy_51:
(Start: 14 @36661 has 17 MA's), (29, 36826), (34, 36877),

Gene: Janeemi_54 Start: 38904, Stop: 39122, Start Num: 13
Candidate Starts for Janeemi_54:
(Start: 13 @38904 has 26 MA's), (25, 39012), (34, 39108),

Gene: Joemato_52 Start: 37287, Stop: 37508, Start Num: 13
Candidate Starts for Joemato_52:
(Start: 13 @37287 has 26 MA's), (25, 37401), (34, 37494),

Gene: JohnDoe_52 Start: 37271, Stop: 37492, Start Num: 13
Candidate Starts for JohnDoe_52:
(Start: 13 @37271 has 26 MA's), (25, 37385), (34, 37478),

Gene: Jstan_52 Start: 37884, Stop: 38114, Start Num: 14
Candidate Starts for Jstan_52:
(Start: 14 @37884 has 17 MA's), (25, 38001), (34, 38100),

Gene: JuneStar_53 Start: 40003, Stop: 40233, Start Num: 14
Candidate Starts for JuneStar_53:
(Start: 14 @40003 has 17 MA's), (34, 40219),

Gene: Kalimba_47 Start: 33307, Stop: 33519, Start Num: 16
Candidate Starts for Kalimba_47:
(12, 33070), (Start: 16 @33307 has 2 MA's), (23, 33373),

Gene: Kaylissa_53 Start: 37666, Stop: 37887, Start Num: 13
Candidate Starts for Kaylissa_53:
(Start: 13 @37666 has 26 MA's), (25, 37780), (34, 37873),

Gene: KeAlii_49 Start: 36858, Stop: 37082, Start Num: 13
Candidate Starts for KeAlii_49:
(Start: 13 @36858 has 26 MA's), (22, 36930), (34, 37068),

Gene: Lego_51 Start: 36986, Stop: 37207, Start Num: 13
Candidate Starts for Lego_51:
(Start: 13 @36986 has 26 MA's), (25, 37100), (34, 37193),

Gene: Liebe_53 Start: 39401, Stop: 39613, Start Num: 15
Candidate Starts for Liebe_53:
(Start: 15 @39401 has 3 MA's), (19, 39455), (34, 39599),

Gene: Lizalica_51 Start: 36731, Stop: 36952, Start Num: 13
Candidate Starts for Lizalica_51:
(Start: 13 @36731 has 26 MA's), (25, 36845), (34, 36938),

Gene: London_50 Start: 37880, Stop: 38110, Start Num: 14
Candidate Starts for London_50:
(Start: 14 @37880 has 17 MA's), (25, 37997), (34, 38096),

Gene: MaGuCo_49 Start: 38092, Stop: 38304, Start Num: 15
Candidate Starts for MaGuCo_49:
(Start: 15 @38092 has 3 MA's), (19, 38146), (27, 38215), (34, 38290),

Gene: Maureen_53 Start: 39400, Stop: 39612, Start Num: 15
Candidate Starts for Maureen_53:
(Start: 15 @39400 has 3 MA's), (19, 39454), (34, 39598),

Gene: MissSwiss_54 Start: 36480, Stop: 36698, Start Num: 13
Candidate Starts for MissSwiss_54:
(Start: 13 @36480 has 26 MA's), (25, 36588), (34, 36684),

Gene: Moss_54 Start: 33397, Stop: 33609, Start Num: 16
Candidate Starts for Moss_54:
(12, 33160), (Start: 16 @33397 has 2 MA's), (23, 33463),

Gene: Mudpuppy_48 Start: 36915, Stop: 37136, Start Num: 13
Candidate Starts for Mudpuppy_48:
(Start: 13 @36915 has 26 MA's), (25, 37029), (34, 37122),

Gene: Mysterium_46 Start: 33230, Stop: 33442, Start Num: 16
Candidate Starts for Mysterium_46:
(12, 32993), (Start: 16 @33230 has 2 MA's), (23, 33296),

Gene: Niobe_50 Start: 37883, Stop: 38113, Start Num: 14
Candidate Starts for Niobe_50:
(Start: 14 @37883 has 17 MA's), (25, 38000), (34, 38099),

Gene: Nitro_53 Start: 38988, Stop: 39218, Start Num: 14
Candidate Starts for Nitro_53:
(10, 38691), (Start: 14 @38988 has 17 MA's), (25, 39105), (34, 39204),

Gene: ObiToo_56 Start: 38231, Stop: 38461, Start Num: 14
Candidate Starts for ObiToo_56:
(7, 37799), (Start: 14 @38231 has 17 MA's), (25, 38348), (29, 38396), (34, 38447),

Gene: Phives_56 Start: 39558, Stop: 39776, Start Num: 13
Candidate Starts for Phives_56:
(3, 38994), (6, 39162), (Start: 13 @39558 has 26 MA's), (25, 39666), (34, 39762),

Gene: Pixelle_54 Start: 40140, Stop: 40340, Start Num: 13
Candidate Starts for Pixelle_54:
(Start: 13 @40140 has 26 MA's), (34, 40326),

Gene: Powerpuff_54 Start: 38373, Stop: 38594, Start Num: 13
Candidate Starts for Powerpuff_54:
(Start: 13 @38373 has 26 MA's), (25, 38487), (34, 38580),

Gene: Pumpkins_50 Start: 37746, Stop: 37976, Start Num: 14

Candidate Starts for Pumpkins_50:

(8, 37368), (Start: 14 @37746 has 17 MA's), (34, 37962),

Gene: Reedo_51 Start: 35724, Stop: 35936, Start Num: 13

Candidate Starts for Reedo_51:

(Start: 13 @35724 has 26 MA's), (22, 35784), (34, 35922),

Gene: Simpson_54 Start: 37291, Stop: 37512, Start Num: 13

Candidate Starts for Simpson_54:

(Start: 13 @37291 has 26 MA's), (25, 37405), (34, 37498),

Gene: Snek_54 Start: 36857, Stop: 37057, Start Num: 18

Candidate Starts for Snek_54:

(Start: 18 @36857 has 2 MA's), (21, 36902), (27, 36965), (28, 36983), (29, 36995), (34, 37043),

Gene: Soondubu_48 Start: 39736, Stop: 39963, Start Num: 14

Candidate Starts for Soondubu_48:

(Start: 14 @39736 has 17 MA's), (22, 39811), (34, 39949),

Gene: Sooty_48 Start: 33322, Stop: 33534, Start Num: 16

Candidate Starts for Sooty_48:

(12, 33085), (Start: 16 @33322 has 2 MA's), (23, 33388),

Gene: SpecialK_53 Start: 33306, Stop: 33518, Start Num: 16

Candidate Starts for SpecialK_53:

(12, 33069), (Start: 16 @33306 has 2 MA's), (23, 33372),

Gene: Sue2_52 Start: 37060, Stop: 37284, Start Num: 13

Candidate Starts for Sue2_52:

(1, 36403), (2, 36421), (4, 36535), (5, 36604), (9, 36670), (Start: 13 @37060 has 26 MA's), (34, 37270),

Gene: Tallboi_51 Start: 38238, Stop: 38468, Start Num: 14

Candidate Starts for Tallboi_51:

(Start: 14 @38238 has 17 MA's), (25, 38355), (34, 38454),

Gene: Tbone_52 Start: 37857, Stop: 38078, Start Num: 13

Candidate Starts for Tbone_52:

(Start: 13 @37857 has 26 MA's), (25, 37971), (34, 38064),

Gene: TforTroy_52 Start: 37603, Stop: 37833, Start Num: 14

Candidate Starts for TforTroy_52:

(Start: 14 @37603 has 17 MA's), (25, 37720), (34, 37819),

Gene: Tian_52 Start: 39795, Stop: 39995, Start Num: 13

Candidate Starts for Tian_52:

(Start: 13 @39795 has 26 MA's), (34, 39981),

Gene: Tuck_55 Start: 39348, Stop: 39566, Start Num: 13

Candidate Starts for Tuck_55:

(Start: 13 @39348 has 26 MA's), (25, 39456), (34, 39552),

Gene: Turab_49 Start: 36357, Stop: 36581, Start Num: 13

Candidate Starts for Turab_49:
(Start: 13 @36357 has 26 MA's), (34, 36567),

Gene: Tutumahutu_53 Start: 37244, Stop: 37465, Start Num: 13
Candidate Starts for Tutumahutu_53:
(Start: 13 @37244 has 26 MA's), (25, 37358), (34, 37451),

Gene: Tweety19_55 Start: 36857, Stop: 37057, Start Num: 18
Candidate Starts for Tweety19_55:
(Start: 18 @36857 has 2 MA's), (21, 36902), (27, 36965), (28, 36983), (29, 36995), (34, 37043),

Gene: VResidence_52 Start: 36790, Stop: 37014, Start Num: 13
Candidate Starts for VResidence_52:
(Start: 13 @36790 has 26 MA's), (22, 36856), (26, 36901), (34, 37000),

Gene: Warda_52 Start: 37355, Stop: 37576, Start Num: 13
Candidate Starts for Warda_52:
(Start: 13 @37355 has 26 MA's), (25, 37469), (34, 37562),

Gene: Wildwest_51 Start: 37289, Stop: 37513, Start Num: 13
Candidate Starts for Wildwest_51:
(Start: 13 @37289 has 26 MA's), (34, 37499),

Gene: Yang_51 Start: 37412, Stop: 37642, Start Num: 14
Candidate Starts for Yang_51:
(Start: 14 @37412 has 17 MA's), (25, 37529), (29, 37577), (34, 37628),

Gene: YesChef_52 Start: 37232, Stop: 37453, Start Num: 13
Candidate Starts for YesChef_52:
(Start: 13 @37232 has 26 MA's), (25, 37346), (34, 37439),