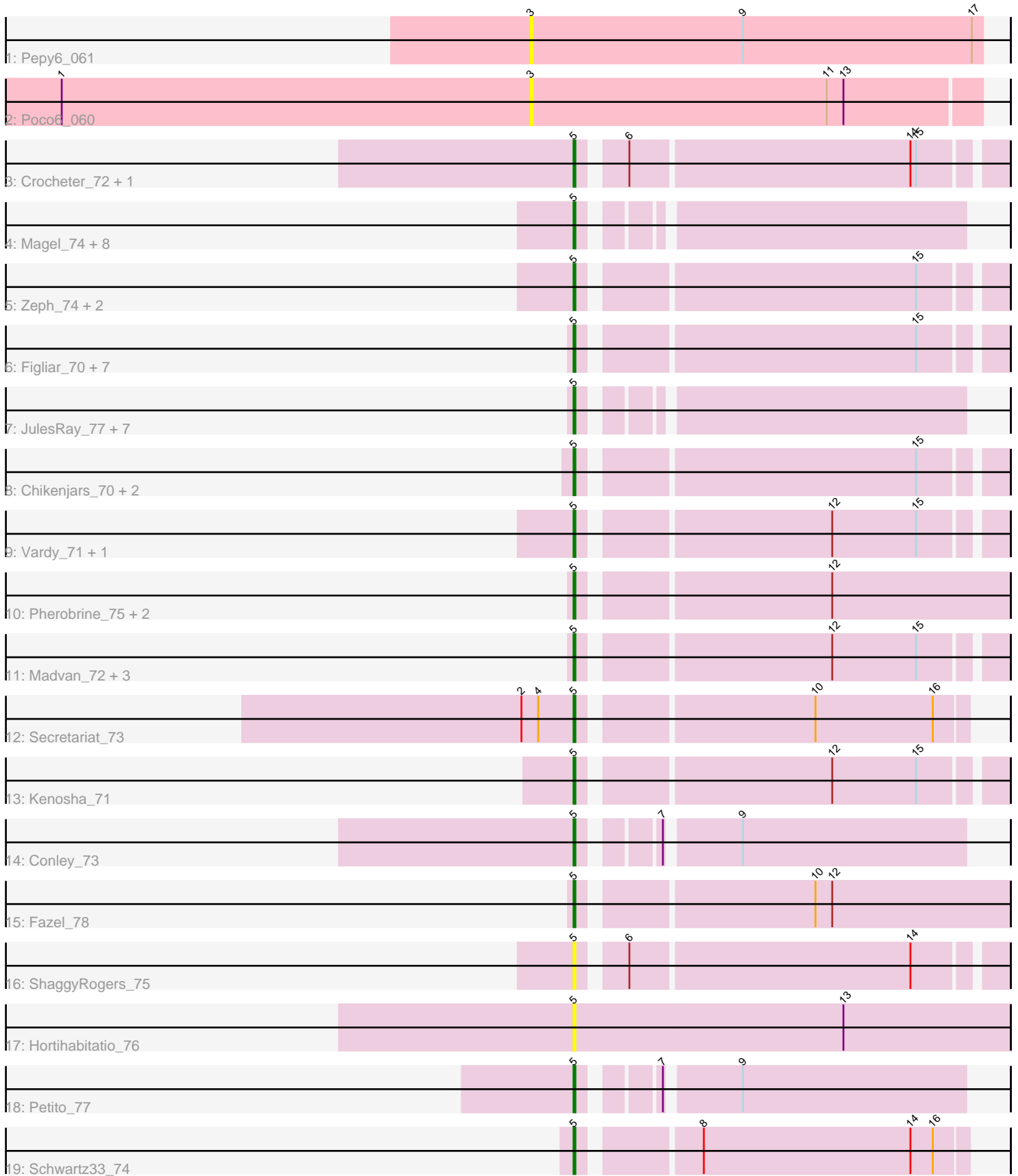


Pham 195641



Note: Tracks are now grouped by subcluster and scaled. Switching in subcluster is indicated by changes in track color. Track scale is now set by default to display the region 30 bp upstream of start 1 to 30 bp downstream of the last possible start. If this default region is judged to be packed too tightly with annotated starts, the track will be further scaled to only show that region of the ORF with annotated starts. This action will be indicated by adding "Zoomed" to the title. For starts, yellow indicates the location of called starts comprised solely of Glimmer/GeneMark auto-annotations, green indicates the location of called starts with at least 1 manual gene annotation.

## Pham 195641 Report

This analysis was run 12/09/24 on database version 580.

Pham number 195641 has 52 members, 10 are drafts.

Phages represented in each track:

- Track 1 : Pepy6\_061
- Track 2 : Poco6\_060
- Track 3 : Crocheter\_72, Gusicorn\_75
- Track 4 : Magel\_74, Odesza\_72, Eddiemania\_74, Tanis\_73, Roney\_73, Kerry\_72, Capybara\_73, Gill\_73, Gravy\_72
- Track 5 : Zeph\_74, Arataki\_69, Hydrus\_74
- Track 6 : Figliar\_70, TenaciousP\_72, Aflac\_71, EndAve\_73, Jodelie19\_70, AlainaMarie\_71, Rickmore\_69, BluerMoon\_73
- Track 7 : JulesRay\_77, OhMyWard\_71, Captrips\_74, Mossy\_75, Avazak\_76, Artorias\_75, FortCran\_75, NoPickles\_74
- Track 8 : Chikenjars\_70, Duffington\_71, OlgasClover\_72
- Track 9 : Vardy\_71, Burley\_72
- Track 10 : Pherobrine\_75, Mysticmoon\_76, Perkunas\_76
- Track 11 : Madvan\_72, Phepper\_73, Untouchable\_74, Nadmeg\_73
- Track 12 : Secretariat\_73
- Track 13 : Kenosha\_71
- Track 14 : Conley\_73
- Track 15 : Fazel\_78
- Track 16 : ShaggyRogers\_75
- Track 17 : Hortihabitatio\_76
- Track 18 : Petite\_77
- Track 19 : Schwartz33\_74

### ***Summary of Final Annotations (See graph section above for start numbers):***

The start number called the most often in the published annotations is 5, it was called in 42 of the 42 non-draft genes in the pham.

Genes that call this "Most Annotated" start:

- Aflac\_71, AlainaMarie\_71, Arataki\_69, Artorias\_75, Avazak\_76, BluerMoon\_73, Burley\_72, Captrips\_74, Capybara\_73, Chikenjars\_70, Conley\_73, Crocheter\_72, Duffington\_71, Eddiemania\_74, EndAve\_73, Fazel\_78, Figliar\_70, FortCran\_75, Gill\_73, Gravy\_72, Gusicorn\_75, Hortihabitatio\_76, Hydrus\_74, Jodelie19\_70, JulesRay\_77, Kenosha\_71, Kerry\_72, Madvan\_72, Magel\_74, Mossy\_75,

Mysticmoon\_76, Nadmeg\_73, NoPickles\_74, Odesza\_72, OhMyWard\_71, OlgasClover\_72, Perkunas\_76, Petite\_77, Phepper\_73, Pherobrine\_75, Rickmore\_69, Roney\_73, Schwartz33\_74, Secretariat\_73, ShaggyRogers\_75, Tanis\_73, TenaciousP\_72, Untouchable\_74, Vardy\_71, Zeph\_74,

Genes that have the "Most Annotated" start but do not call it:

- 

Genes that do not have the "Most Annotated" start:

- Pepy6\_061, Poco6\_060,

### Summary by start number:

Start 3:

- Found in 2 of 52 ( 3.8% ) of genes in pham
- No Manual Annotations of this start.
- Called 100.0% of time when present
- Phage (with cluster) where this start called: Pepy6\_061 (CC), Poco6\_060 (CC),

Start 5:

- Found in 50 of 52 ( 96.2% ) of genes in pham
- Manual Annotations of this start: 42 of 42
- Called 100.0% of time when present
- Phage (with cluster) where this start called: Aflac\_71 (DJ), AlainaMarie\_71 (DJ), Arataki\_69 (DJ), Artorias\_75 (DJ), Avazak\_76 (DJ), BluerMoon\_73 (DJ), Burley\_72 (DJ), Captrips\_74 (DJ), Copybara\_73 (DJ), Chikenjars\_70 (DJ), Conley\_73 (DJ), Crocheter\_72 (DJ), Duffington\_71 (DJ), Eddiemania\_74 (DJ), EndAve\_73 (DJ), Fazel\_78 (DJ), Figliar\_70 (DJ), FortCran\_75 (DJ), Gill\_73 (DJ), Gravy\_72 (DJ), Gusicorn\_75 (DJ), Hortihabitatio\_76 (DJ), Hydrus\_74 (DJ), Jodelie19\_70 (DJ), JulesRay\_77 (DJ), Kenosha\_71 (DJ), Kerry\_72 (DJ), Madvan\_72 (DJ), Magel\_74 (DJ), Mossy\_75 (DJ), Mysticmoon\_76 (DJ), Nadmeg\_73 (DJ), NoPickles\_74 (DJ), Odesza\_72 (DJ), OhMyWard\_71 (DJ), OlgasClover\_72 (DJ), Perkunas\_76 (DJ), Petite\_77 (DJ), Phepper\_73 (DJ), Pherobrine\_75 (DJ), Rickmore\_69 (DJ), Roney\_73 (DJ), Schwartz33\_74 (DJ), Secretariat\_73 (DJ), ShaggyRogers\_75 (DJ), Tanis\_73 (DJ), TenaciousP\_72 (DJ), Untouchable\_74 (DJ), Vardy\_71 (DJ), Zeph\_74 (DJ),

### Summary by clusters:

There are 2 clusters represented in this pham: CC, DJ,

Info for manual annotations of cluster DJ:

- Start number 5 was manually annotated 42 times for cluster DJ.

### Gene Information:

Gene: Aflac\_71 Start: 50291, Stop: 50503, Start Num: 5

Candidate Starts for Aflac\_71:

(Start: 5 @50291 has 42 MA's), (15, 50462),

Gene: AlainaMarie\_71 Start: 50332, Stop: 50544, Start Num: 5

Candidate Starts for AlainaMarie\_71:  
(Start: 5 @50332 has 42 MA's), (15, 50503),

Gene: Arataki\_69 Start: 49761, Stop: 49973, Start Num: 5  
Candidate Starts for Arataki\_69:  
(Start: 5 @49761 has 42 MA's), (15, 49932),

Gene: Artorias\_75 Start: 50322, Stop: 50510, Start Num: 5  
Candidate Starts for Artorias\_75:  
(Start: 5 @50322 has 42 MA's),

Gene: Avazak\_76 Start: 51004, Stop: 51192, Start Num: 5  
Candidate Starts for Avazak\_76:  
(Start: 5 @51004 has 42 MA's),

Gene: BluerMoon\_73 Start: 50243, Stop: 50455, Start Num: 5  
Candidate Starts for BluerMoon\_73:  
(Start: 5 @50243 has 42 MA's), (15, 50414),

Gene: Burley\_72 Start: 49780, Stop: 49992, Start Num: 5  
Candidate Starts for Burley\_72:  
(Start: 5 @49780 has 42 MA's), (12, 49906), (15, 49951),

Gene: Captrips\_74 Start: 50152, Stop: 50340, Start Num: 5  
Candidate Starts for Captrips\_74:  
(Start: 5 @50152 has 42 MA's),

Gene: Capybara\_73 Start: 49991, Stop: 50179, Start Num: 5  
Candidate Starts for Capybara\_73:  
(Start: 5 @49991 has 42 MA's),

Gene: Chikenjars\_70 Start: 50364, Stop: 50576, Start Num: 5  
Candidate Starts for Chikenjars\_70:  
(Start: 5 @50364 has 42 MA's), (15, 50535),

Gene: Conley\_73 Start: 50629, Stop: 50817, Start Num: 5  
Candidate Starts for Conley\_73:  
(Start: 5 @50629 has 42 MA's), (7, 50662), (9, 50698),

Gene: Crocheter\_72 Start: 50227, Stop: 50439, Start Num: 5  
Candidate Starts for Crocheter\_72:  
(Start: 5 @50227 has 42 MA's), (6, 50248), (14, 50395), (15, 50398),

Gene: Duffington\_71 Start: 50297, Stop: 50509, Start Num: 5  
Candidate Starts for Duffington\_71:  
(Start: 5 @50297 has 42 MA's), (15, 50468),

Gene: Eddiemania\_74 Start: 50969, Stop: 51187, Start Num: 5  
Candidate Starts for Eddiemania\_74:  
(Start: 5 @50969 has 42 MA's),

Gene: EndAve\_73 Start: 50519, Stop: 50731, Start Num: 5  
Candidate Starts for EndAve\_73:

(Start: 5 @50519 has 42 MA's), (15, 50690),

Gene: Fazel\_78 Start: 51297, Stop: 51518, Start Num: 5

Candidate Starts for Fazel\_78:

(Start: 5 @51297 has 42 MA's), (10, 51414), (12, 51423),

Gene: Figliar\_70 Start: 50360, Stop: 50572, Start Num: 5

Candidate Starts for Figliar\_70:

(Start: 5 @50360 has 42 MA's), (15, 50531),

Gene: FortCran\_75 Start: 50322, Stop: 50510, Start Num: 5

Candidate Starts for FortCran\_75:

(Start: 5 @50322 has 42 MA's),

Gene: Gill\_73 Start: 50003, Stop: 50191, Start Num: 5

Candidate Starts for Gill\_73:

(Start: 5 @50003 has 42 MA's),

Gene: Gravy\_72 Start: 49681, Stop: 49869, Start Num: 5

Candidate Starts for Gravy\_72:

(Start: 5 @49681 has 42 MA's),

Gene: Gusicorn\_75 Start: 50134, Stop: 50346, Start Num: 5

Candidate Starts for Gusicorn\_75:

(Start: 5 @50134 has 42 MA's), (6, 50155), (14, 50302), (15, 50305),

Gene: Hortihabitatio\_76 Start: 51514, Stop: 51747, Start Num: 5

Candidate Starts for Hortihabitatio\_76:

(Start: 5 @51514 has 42 MA's), (13, 51658),

Gene: Hydrus\_74 Start: 50945, Stop: 51157, Start Num: 5

Candidate Starts for Hydrus\_74:

(Start: 5 @50945 has 42 MA's), (15, 51116),

Gene: Jodelie19\_70 Start: 51527, Stop: 51739, Start Num: 5

Candidate Starts for Jodelie19\_70:

(Start: 5 @51527 has 42 MA's), (15, 51698),

Gene: JulesRay\_77 Start: 50671, Stop: 50859, Start Num: 5

Candidate Starts for JulesRay\_77:

(Start: 5 @50671 has 42 MA's),

Gene: Kenosha\_71 Start: 50371, Stop: 50583, Start Num: 5

Candidate Starts for Kenosha\_71:

(Start: 5 @50371 has 42 MA's), (12, 50497), (15, 50542),

Gene: Kerry\_72 Start: 49744, Stop: 49932, Start Num: 5

Candidate Starts for Kerry\_72:

(Start: 5 @49744 has 42 MA's),

Gene: Madvan\_72 Start: 49833, Stop: 50045, Start Num: 5

Candidate Starts for Madvan\_72:

(Start: 5 @49833 has 42 MA's), (12, 49959), (15, 50004),

Gene: Magel\_74 Start: 49918, Stop: 50106, Start Num: 5  
Candidate Starts for Magel\_74:  
(Start: 5 @49918 has 42 MA's),

Gene: Mossy\_75 Start: 51825, Stop: 52043, Start Num: 5  
Candidate Starts for Mossy\_75:  
(Start: 5 @51825 has 42 MA's),

Gene: Mysticmoon\_76 Start: 51515, Stop: 51736, Start Num: 5  
Candidate Starts for Mysticmoon\_76:  
(Start: 5 @51515 has 42 MA's), (12, 51641),

Gene: Nadmeg\_73 Start: 51062, Stop: 51274, Start Num: 5  
Candidate Starts for Nadmeg\_73:  
(Start: 5 @51062 has 42 MA's), (12, 51188), (15, 51233),

Gene: NoPickles\_74 Start: 49838, Stop: 50026, Start Num: 5  
Candidate Starts for NoPickles\_74:  
(Start: 5 @49838 has 42 MA's),

Gene: Odesza\_72 Start: 49862, Stop: 50050, Start Num: 5  
Candidate Starts for Odesza\_72:  
(Start: 5 @49862 has 42 MA's),

Gene: OhMyWard\_71 Start: 51584, Stop: 51802, Start Num: 5  
Candidate Starts for OhMyWard\_71:  
(Start: 5 @51584 has 42 MA's),

Gene: OlgasClover\_72 Start: 50869, Stop: 51081, Start Num: 5  
Candidate Starts for OlgasClover\_72:  
(Start: 5 @50869 has 42 MA's), (15, 51040),

Gene: Pepy6\_061 Start: 65370, Stop: 65612, Start Num: 3  
Candidate Starts for Pepy6\_061:  
(3, 65370), (9, 65484), (17, 65607),

Gene: Perkunas\_76 Start: 50055, Stop: 50246, Start Num: 5  
Candidate Starts for Perkunas\_76:  
(Start: 5 @50055 has 42 MA's), (12, 50175),

Gene: Petite\_77 Start: 51575, Stop: 51763, Start Num: 5  
Candidate Starts for Petite\_77:  
(Start: 5 @51575 has 42 MA's), (7, 51608), (9, 51644),

Gene: Phepper\_73 Start: 50075, Stop: 50287, Start Num: 5  
Candidate Starts for Phepper\_73:  
(Start: 5 @50075 has 42 MA's), (12, 50201), (15, 50246),

Gene: Pherobrine\_75 Start: 51570, Stop: 51791, Start Num: 5  
Candidate Starts for Pherobrine\_75:  
(Start: 5 @51570 has 42 MA's), (12, 51696),

Gene: Poco6\_060 Start: 66117, Stop: 66356, Start Num: 3  
Candidate Starts for Poco6\_060:  
(1, 65865), (3, 66117), (11, 66276), (13, 66285),

Gene: Rickmore\_69 Start: 48736, Stop: 48948, Start Num: 5  
Candidate Starts for Rickmore\_69:  
(Start: 5 @48736 has 42 MA's), (15, 48907),

Gene: Roney\_73 Start: 50028, Stop: 50216, Start Num: 5  
Candidate Starts for Roney\_73:  
(Start: 5 @50028 has 42 MA's),

Gene: Schwartz33\_74 Start: 50435, Stop: 50632, Start Num: 5  
Candidate Starts for Schwartz33\_74:  
(Start: 5 @50435 has 42 MA's), (8, 50492), (14, 50603), (16, 50615),

Gene: Secretariat\_73 Start: 49782, Stop: 49979, Start Num: 5  
Candidate Starts for Secretariat\_73:  
(2, 49755), (4, 49764), (Start: 5 @49782 has 42 MA's), (10, 49899), (16, 49962),

Gene: ShaggyRogers\_75 Start: 49868, Stop: 50080, Start Num: 5  
Candidate Starts for ShaggyRogers\_75:  
(Start: 5 @49868 has 42 MA's), (6, 49889), (14, 50036),

Gene: Tanis\_73 Start: 49848, Stop: 50036, Start Num: 5  
Candidate Starts for Tanis\_73:  
(Start: 5 @49848 has 42 MA's),

Gene: TenaciousP\_72 Start: 51489, Stop: 51701, Start Num: 5  
Candidate Starts for TenaciousP\_72:  
(Start: 5 @51489 has 42 MA's), (15, 51660),

Gene: Untouchable\_74 Start: 51072, Stop: 51284, Start Num: 5  
Candidate Starts for Untouchable\_74:  
(Start: 5 @51072 has 42 MA's), (12, 51198), (15, 51243),

Gene: Vardy\_71 Start: 49774, Stop: 49986, Start Num: 5  
Candidate Starts for Vardy\_71:  
(Start: 5 @49774 has 42 MA's), (12, 49900), (15, 49945),

Gene: Zeph\_74 Start: 50912, Stop: 51124, Start Num: 5  
Candidate Starts for Zeph\_74:  
(Start: 5 @50912 has 42 MA's), (15, 51083),