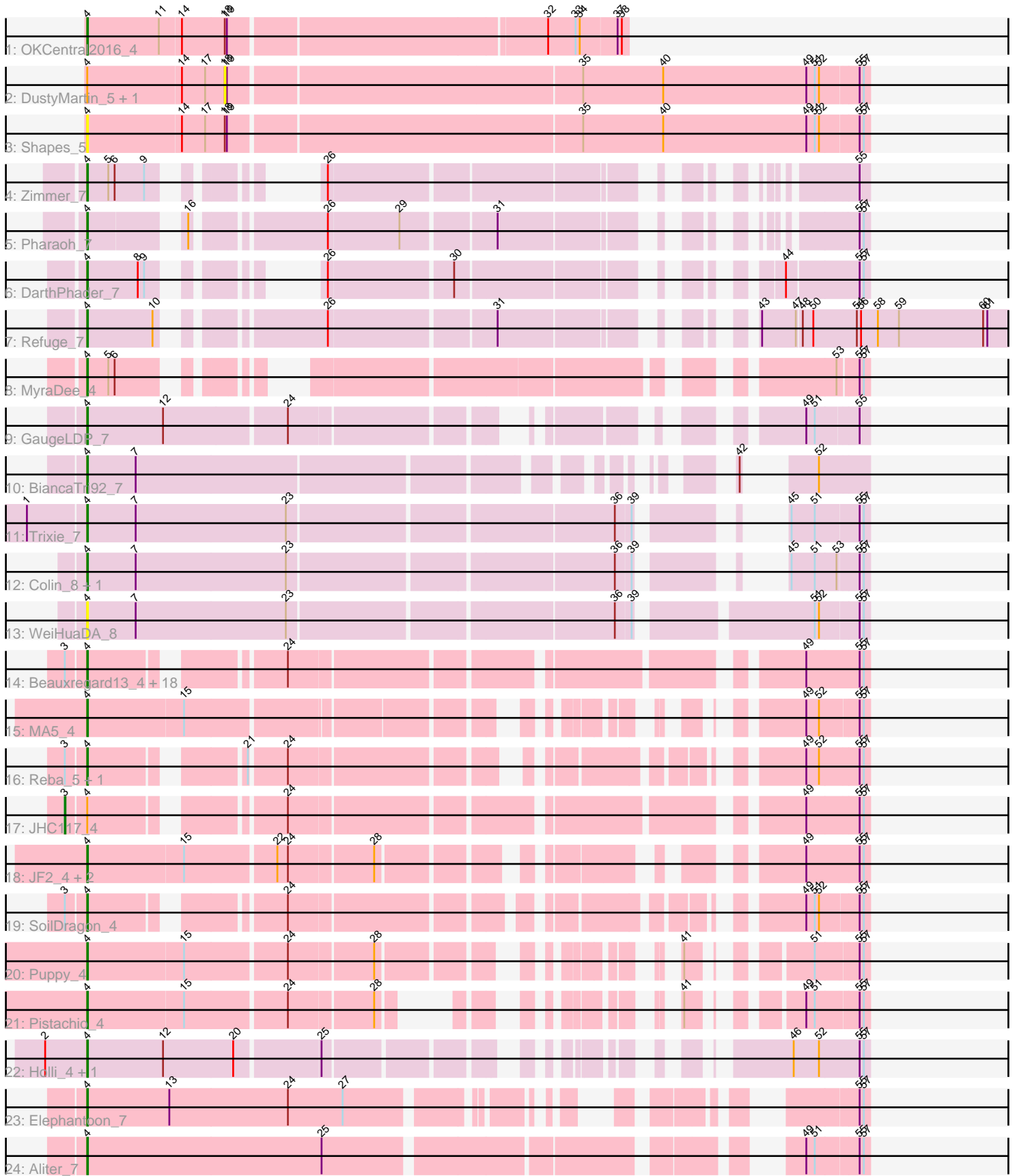


Pham 195657



Note: Tracks are now grouped by subcluster and scaled. Switching in subcluster is indicated by changes in track color. Track scale is now set by default to display the region 30 bp upstream of start 1 to 30 bp downstream of the last possible start. If this default region is judged to be packed too tightly with annotated starts, the track will be further scaled to only show that region of the ORF with annotated starts. This action will be indicated by adding "Zoomed" to the title. For starts, yellow indicates the location of called starts comprised solely of Glimmer/GeneMark auto-annotations, green indicates the location of called starts with at least 1 manual gene annotation.

Pham 195657 Report

This analysis was run 12/09/24 on database version 580.

Pham number 195657 has 48 members, 5 are drafts.

Phages represented in each track:

- Track 1 : OKCentral2016_4
- Track 2 : DustyMartin_5, Rowdy_5
- Track 3 : Shapes_5
- Track 4 : Zimmer_7
- Track 5 : Pharaoh_7
- Track 6 : DarthPhader_7
- Track 7 : Refuge_7
- Track 8 : MyraDee_4
- Track 9 : GaugeLDP_7
- Track 10 : BiancaTri92_7
- Track 11 : Trixie_7
- Track 12 : Colin_8, Kalpine_7
- Track 13 : WeiHuaDA_8
- Track 14 : Beauxregard13_4, Cullens_4, LBerry_4, Phoebe_4, EpicPhail_4, JenCasNa_4, P28Green_4, Fernando_4, Colbster_4, Taurus_4, Marie_4, PotatoSplit_5, Grum1_4, AgronaGT15_4, Penny1_4, MoneyMay_4, Sabinator_4, Hercules11_4, LugYA_6
- Track 15 : MA5_4
- Track 16 : Reba_5, PhishRPhriends_4
- Track 17 : JHC117_4
- Track 18 : JF2_4, B1_03, JF4_4
- Track 19 : SoilDragon_4
- Track 20 : Puppy_4
- Track 21 : Pistachio_4
- Track 22 : Holli_4, OKaNui_4
- Track 23 : Elephantoon_7
- Track 24 : Aliter_7

Summary of Final Annotations (See graph section above for start numbers):

The start number called the most often in the published annotations is 4, it was called in 42 of the 43 non-draft genes in the pham.

Genes that call this "Most Annotated" start:

- AgronaGT15_4, Aliter_7, B1_03, Beauxregard13_4, BiancaTri92_7, Colbster_4, Colin_8, Cullens_4, DarthPhader_7, Elephantoon_7, EpicPhail_4, Fernando_4, GaugeLDP_7, Grum1_4, Hercules11_4, Holli_4, JF2_4, JF4_4, JenCasNa_4, Kalpine_7, LBerry_4, LugYA_6, MA5_4, Marie_4, MoneyMay_4, MyraDee_4, OKCentral2016_4, OKaNui_4, P28Green_4, Penny1_4, Pharaoh_7, PhishRPhriends_4, Phoebe_4, Pistachio_4, PotatoSplit_5, Puppy_4, Reba_5, Refuge_7, Sabinator_4, Shapes_5, SoilDragon_4, Taurus_4, Trixie_7, WeiHuaDA_8, Zimmer_7,

Genes that have the "Most Annotated" start but do not call it:

- DustyMartin_5, JHC117_4, Rowdy_5,

Genes that do not have the "Most Annotated" start:

-

Summary by start number:

Start 3:

- Found in 23 of 48 (47.9%) of genes in pham
- Manual Annotations of this start: 1 of 43
- Called 4.3% of time when present
- Phage (with cluster) where this start called: JHC117_4 (A3),

Start 4:

- Found in 48 of 48 (100.0%) of genes in pham
- Manual Annotations of this start: 42 of 43
- Called 93.8% of time when present
- Phage (with cluster) where this start called: AgronaGT15_4 (A3), Aliter_7 (A9), B1_03 (A3), Beauxregard13_4 (A3), BiancaTri92_7 (A2), Colbster_4 (A3), Colin_8 (A2), Cullens_4 (A3), DarthPhader_7 (A12), Elephantoon_7 (A9), EpicPhail_4 (A3), Fernando_4 (A3), GaugeLDP_7 (A2), Grum1_4 (A3), Hercules11_4 (A3), Holli_4 (A4), JF2_4 (A3), JF4_4 (A3), JenCasNa_4 (A3), Kalpine_7 (A2), LBerry_4 (A3), LugYA_6 (A3), MA5_4 (A3), Marie_4 (A3), MoneyMay_4 (A3), MyraDee_4 (A18), OKCentral2016_4 (A10), OKaNui_4 (A4), P28Green_4 (A3), Penny1_4 (A3), Pharaoh_7 (A12), PhishRPhriends_4 (A3), Phoebe_4 (A3), Pistachio_4 (A3), PotatoSplit_5 (A3), Puppy_4 (A3), Reba_5 (A3), Refuge_7 (A12), Sabinator_4 (A3), Shapes_5 (A10), SoilDragon_4 (A3), Taurus_4 (A3), Trixie_7 (A2), WeiHuaDA_8 (A2), Zimmer_7 (A12),

Start 18:

- Found in 4 of 48 (8.3%) of genes in pham
- No Manual Annotations of this start.
- Called 50.0% of time when present
- Phage (with cluster) where this start called: DustyMartin_5 (A10), Rowdy_5 (A10),

Summary by clusters:

There are 7 clusters represented in this pham: A10, A12, A18, A3, A2, A4, A9,

Info for manual annotations of cluster A10:

- Start number 4 was manually annotated 1 time for cluster A10.

Info for manual annotations of cluster A12:

- Start number 4 was manually annotated 4 times for cluster A12.

Info for manual annotations of cluster A18:

- Start number 4 was manually annotated 1 time for cluster A18.

Info for manual annotations of cluster A2:

- Start number 4 was manually annotated 4 times for cluster A2.

Info for manual annotations of cluster A3:

- Start number 3 was manually annotated 1 time for cluster A3.
- Start number 4 was manually annotated 28 times for cluster A3.

Info for manual annotations of cluster A4:

- Start number 4 was manually annotated 2 times for cluster A4.

Info for manual annotations of cluster A9:

- Start number 4 was manually annotated 2 times for cluster A9.

Gene Information:

Gene: AgronaGT15_4 Start: 1682, Stop: 2536, Start Num: 4

Candidate Starts for AgronaGT15_4:

(Start: 3 @1655 has 1 MA's), (Start: 4 @1682 has 42 MA's), (24, 1910), (49, 2450), (55, 2522), (57, 2528),

Gene: Aliter_7 Start: 4192, Stop: 5163, Start Num: 4

Candidate Starts for Aliter_7:

(Start: 4 @4192 has 42 MA's), (25, 4525), (49, 5080), (51, 5092), (55, 5149), (57, 5155),

Gene: B1_03 Start: 1608, Stop: 2510, Start Num: 4

Candidate Starts for B1_03:

(Start: 4 @1608 has 42 MA's), (15, 1743), (22, 1866), (24, 1881), (28, 1995), (49, 2424), (55, 2496), (57, 2502),

Gene: Beauxregard13_4 Start: 1681, Stop: 2625, Start Num: 4

Candidate Starts for Beauxregard13_4:

(Start: 3 @1654 has 1 MA's), (Start: 4 @1681 has 42 MA's), (24, 1909), (49, 2539), (55, 2611), (57, 2617),

Gene: BiancaTri92_7 Start: 4180, Stop: 5040, Start Num: 4

Candidate Starts for BiancaTri92_7:

(Start: 4 @4180 has 42 MA's), (7, 4249), (42, 4927), (52, 4972),

Gene: Colbster_4 Start: 1681, Stop: 2625, Start Num: 4

Candidate Starts for Colbster_4:

(Start: 3 @1654 has 1 MA's), (Start: 4 @1681 has 42 MA's), (24, 1909), (49, 2539), (55, 2611), (57, 2617),

Gene: Colin_8 Start: 4293, Stop: 5243, Start Num: 4

Candidate Starts for Colin_8:

(Start: 4 @4293 has 42 MA's), (7, 4362), (23, 4575), (36, 5013), (39, 5034), (45, 5139), (51, 5172), (53, 5202), (55, 5229), (57, 5235),

Gene: Cullens_4 Start: 1681, Stop: 2625, Start Num: 4

Candidate Starts for Cullens_4:

(Start: 3 @1654 has 1 MA's), (Start: 4 @1681 has 42 MA's), (24, 1909), (49, 2539), (55, 2611), (57, 2617),

Gene: DarthPhader_7 Start: 4505, Stop: 5314, Start Num: 4

Candidate Starts for DarthPhader_7:

(Start: 4 @4505 has 42 MA's), (8, 4577), (9, 4586), (26, 4697), (30, 4865), (44, 5201), (55, 5300), (57, 5306),

Gene: DustyMartin_5 Start: 1860, Stop: 2750, Start Num: 18

Candidate Starts for DustyMartin_5:

(Start: 4 @1668 has 42 MA's), (14, 1800), (17, 1833), (18, 1860), (19, 1863), (35, 2349), (40, 2463), (49, 2667), (51, 2679), (52, 2685), (55, 2736), (57, 2742),

Gene: Elephantoon_7 Start: 3947, Stop: 4801, Start Num: 4

Candidate Starts for Elephantoon_7:

(Start: 4 @3947 has 42 MA's), (13, 4064), (24, 4232), (27, 4310), (55, 4787), (57, 4793),

Gene: EpicPhail_4 Start: 1681, Stop: 2625, Start Num: 4

Candidate Starts for EpicPhail_4:

(Start: 3 @1654 has 1 MA's), (Start: 4 @1681 has 42 MA's), (24, 1909), (49, 2539), (55, 2611), (57, 2617),

Gene: Fernando_4 Start: 1681, Stop: 2625, Start Num: 4

Candidate Starts for Fernando_4:

(Start: 3 @1654 has 1 MA's), (Start: 4 @1681 has 42 MA's), (24, 1909), (49, 2539), (55, 2611), (57, 2617),

Gene: GaugeLDP_7 Start: 3954, Stop: 4844, Start Num: 4

Candidate Starts for GaugeLDP_7:

(Start: 4 @3954 has 42 MA's), (12, 4062), (24, 4230), (49, 4761), (51, 4773), (55, 4830),

Gene: Grum1_4 Start: 1681, Stop: 2625, Start Num: 4

Candidate Starts for Grum1_4:

(Start: 3 @1654 has 1 MA's), (Start: 4 @1681 has 42 MA's), (24, 1909), (49, 2539), (55, 2611), (57, 2617),

Gene: Hercules11_4 Start: 1681, Stop: 2634, Start Num: 4

Candidate Starts for Hercules11_4:

(Start: 3 @1654 has 1 MA's), (Start: 4 @1681 has 42 MA's), (24, 1909), (49, 2548), (55, 2620), (57, 2626),

Gene: Holli_4 Start: 1645, Stop: 2511, Start Num: 4

Candidate Starts for Holli_4:

(2, 1585), (Start: 4 @1645 has 42 MA's), (12, 1753), (20, 1849), (25, 1963), (46, 2404), (52, 2440), (55, 2497), (57, 2503),

Gene: JF2_4 Start: 1608, Stop: 2510, Start Num: 4

Candidate Starts for JF2_4:

(Start: 4 @1608 has 42 MA's), (15, 1743), (22, 1866), (24, 1881), (28, 1995), (49, 2424), (55, 2496), (57, 2502),

Gene: JF4_4 Start: 1608, Stop: 2510, Start Num: 4

Candidate Starts for JF4_4:

(Start: 4 @1608 has 42 MA's), (15, 1743), (22, 1866), (24, 1881), (28, 1995), (49, 2424), (55, 2496), (57, 2502),

Gene: JHC117_4 Start: 1654, Stop: 2625, Start Num: 3

Candidate Starts for JHC117_4:

(Start: 3 @1654 has 1 MA's), (Start: 4 @1681 has 42 MA's), (24, 1909), (49, 2539), (55, 2611), (57, 2617),

Gene: JenCasNa_4 Start: 1681, Stop: 2625, Start Num: 4

Candidate Starts for JenCasNa_4:

(Start: 3 @1654 has 1 MA's), (Start: 4 @1681 has 42 MA's), (24, 1909), (49, 2539), (55, 2611), (57, 2617),

Gene: Kalpine_7 Start: 4413, Stop: 5363, Start Num: 4

Candidate Starts for Kalpine_7:

(Start: 4 @4413 has 42 MA's), (7, 4482), (23, 4695), (36, 5133), (39, 5154), (45, 5259), (51, 5292), (53, 5322), (55, 5349), (57, 5355),

Gene: LBerry_4 Start: 1681, Stop: 2625, Start Num: 4

Candidate Starts for LBerry_4:

(Start: 3 @1654 has 1 MA's), (Start: 4 @1681 has 42 MA's), (24, 1909), (49, 2539), (55, 2611), (57, 2617),

Gene: LugYA_6 Start: 1681, Stop: 2625, Start Num: 4

Candidate Starts for LugYA_6:

(Start: 3 @1654 has 1 MA's), (Start: 4 @1681 has 42 MA's), (24, 1909), (49, 2539), (55, 2611), (57, 2617),

Gene: MA5_4 Start: 1622, Stop: 2464, Start Num: 4

Candidate Starts for MA5_4:

(Start: 4 @1622 has 42 MA's), (15, 1757), (49, 2381), (52, 2399), (55, 2450), (57, 2456),

Gene: Marie_4 Start: 1681, Stop: 2625, Start Num: 4

Candidate Starts for Marie_4:

(Start: 3 @1654 has 1 MA's), (Start: 4 @1681 has 42 MA's), (24, 1909), (49, 2539), (55, 2611), (57, 2617),

Gene: MoneyMay_4 Start: 1681, Stop: 2625, Start Num: 4

Candidate Starts for MoneyMay_4:

(Start: 3 @1654 has 1 MA's), (Start: 4 @1681 has 42 MA's), (24, 1909), (49, 2539), (55, 2611), (57, 2617),

Gene: MyraDee_4 Start: 1517, Stop: 2386, Start Num: 4

Candidate Starts for MyraDee_4:

(Start: 4 @1517 has 42 MA's), (5, 1547), (6, 1556), (53, 2345), (55, 2372), (57, 2378),

Gene: OKCentral2016_4 Start: 1637, Stop: 2374, Start Num: 4

Candidate Starts for OKCentral2016_4:

(Start: 4 @1637 has 42 MA's), (11, 1739), (14, 1769), (18, 1829), (19, 1832), (32, 2264), (33, 2303), (34, 2309), (37, 2360), (38, 2366),

Gene: OKaNui_4 Start: 1644, Stop: 2483, Start Num: 4

Candidate Starts for OKaNui_4:

(2, 1584), (Start: 4 @1644 has 42 MA's), (12, 1752), (20, 1848), (25, 1962), (46, 2376), (52, 2412), (55, 2469), (57, 2475),

Gene: P28Green_4 Start: 1682, Stop: 2626, Start Num: 4

Candidate Starts for P28Green_4:

(Start: 3 @1655 has 1 MA's), (Start: 4 @1682 has 42 MA's), (24, 1910), (49, 2540), (55, 2612), (57, 2618),

Gene: Penny1_4 Start: 1681, Stop: 2625, Start Num: 4

Candidate Starts for Penny1_4:

(Start: 3 @1654 has 1 MA's), (Start: 4 @1681 has 42 MA's), (24, 1909), (49, 2539), (55, 2611), (57, 2617),

Gene: Pharaoh_7 Start: 4476, Stop: 5333, Start Num: 4

Candidate Starts for Pharaoh_7:

(Start: 4 @4476 has 42 MA's), (16, 4584), (26, 4746), (29, 4845), (31, 4968), (55, 5319), (57, 5325),

Gene: PhishRPhriends_4 Start: 1686, Stop: 2396, Start Num: 4

Candidate Starts for PhishRPhriends_4:

(Start: 3 @1659 has 1 MA's), (Start: 4 @1686 has 42 MA's), (21, 1866), (24, 1914), (49, 2310), (52, 2328), (55, 2382), (57, 2388),

Gene: Phoebe_4 Start: 1681, Stop: 2625, Start Num: 4

Candidate Starts for Phoebe_4:

(Start: 3 @1654 has 1 MA's), (Start: 4 @1681 has 42 MA's), (24, 1909), (49, 2539), (55, 2611), (57, 2617),

Gene: Pistachio_4 Start: 1612, Stop: 2373, Start Num: 4

Candidate Starts for Pistachio_4:

(Start: 4 @1612 has 42 MA's), (15, 1747), (24, 1885), (28, 1999), (41, 2188), (49, 2290), (51, 2302), (55, 2359), (57, 2365),

Gene: PotatoSplit_5 Start: 1681, Stop: 2625, Start Num: 4

Candidate Starts for PotatoSplit_5:

(Start: 3 @1654 has 1 MA's), (Start: 4 @1681 has 42 MA's), (24, 1909), (49, 2539), (55, 2611), (57, 2617),

Gene: Puppy_4 Start: 1612, Stop: 2445, Start Num: 4

Candidate Starts for Puppy_4:

(Start: 4 @1612 has 42 MA's), (15, 1747), (24, 1885), (28, 1999), (41, 2260), (51, 2374), (55, 2431), (57, 2437),

Gene: Reba_5 Start: 1685, Stop: 2557, Start Num: 4

Candidate Starts for Reba_5:

(Start: 3 @1658 has 1 MA's), (Start: 4 @1685 has 42 MA's), (21, 1865), (24, 1913), (49, 2471), (52, 2489), (55, 2543), (57, 2549),

Gene: Refuge_7 Start: 4506, Stop: 5639, Start Num: 4

Candidate Starts for Refuge_7:

(Start: 4 @4506 has 42 MA's), (10, 4599), (26, 4779), (31, 5001), (43, 5253), (47, 5301), (48, 5307), (50, 5322), (54, 5382), (56, 5388), (58, 5412), (59, 5442), (60, 5562), (61, 5568),

Gene: Rowdy_5 Start: 1860, Stop: 2750, Start Num: 18

Candidate Starts for Rowdy_5:

(Start: 4 @1668 has 42 MA's), (14, 1800), (17, 1833), (18, 1860), (19, 1863), (35, 2349), (40, 2463), (49, 2667), (51, 2679), (52, 2685), (55, 2736), (57, 2742),

Gene: Sabinator_4 Start: 1681, Stop: 2625, Start Num: 4

Candidate Starts for Sabinator_4:

(Start: 3 @1654 has 1 MA's), (Start: 4 @1681 has 42 MA's), (24, 1909), (49, 2539), (55, 2611), (57, 2617),

Gene: Shapes_5 Start: 1668, Stop: 2750, Start Num: 4

Candidate Starts for Shapes_5:

(Start: 4 @1668 has 42 MA's), (14, 1800), (17, 1833), (18, 1860), (19, 1863), (35, 2349), (40, 2463), (49, 2667), (51, 2679), (52, 2685), (55, 2736), (57, 2742),

Gene: SoilDragon_4 Start: 1681, Stop: 2568, Start Num: 4

Candidate Starts for SoilDragon_4:

(Start: 3 @1654 has 1 MA's), (Start: 4 @1681 has 42 MA's), (24, 1909), (49, 2485), (51, 2497), (52, 2503), (55, 2554), (57, 2560),

Gene: Taurus_4 Start: 1681, Stop: 2625, Start Num: 4

Candidate Starts for Taurus_4:

(Start: 3 @1654 has 1 MA's), (Start: 4 @1681 has 42 MA's), (24, 1909), (49, 2539), (55, 2611), (57, 2617),

Gene: Trixie_7 Start: 4278, Stop: 5228, Start Num: 4

Candidate Starts for Trixie_7:

(1, 4197), (Start: 4 @4278 has 42 MA's), (7, 4347), (23, 4560), (36, 4998), (39, 5019), (45, 5124), (51, 5157), (55, 5214), (57, 5220),

Gene: WeiHuaDA_8 Start: 4411, Stop: 5442, Start Num: 4

Candidate Starts for WeiHuaDA_8:

(Start: 4 @4411 has 42 MA's), (7, 4480), (23, 4693), (36, 5131), (39, 5152), (51, 5371), (52, 5377), (55, 5428), (57, 5434),

Gene: Zimmer_7 Start: 4514, Stop: 5293, Start Num: 4

Candidate Starts for Zimmer_7:

(Start: 4 @4514 has 42 MA's), (5, 4544), (6, 4553), (9, 4595), (26, 4706), (55, 5279),