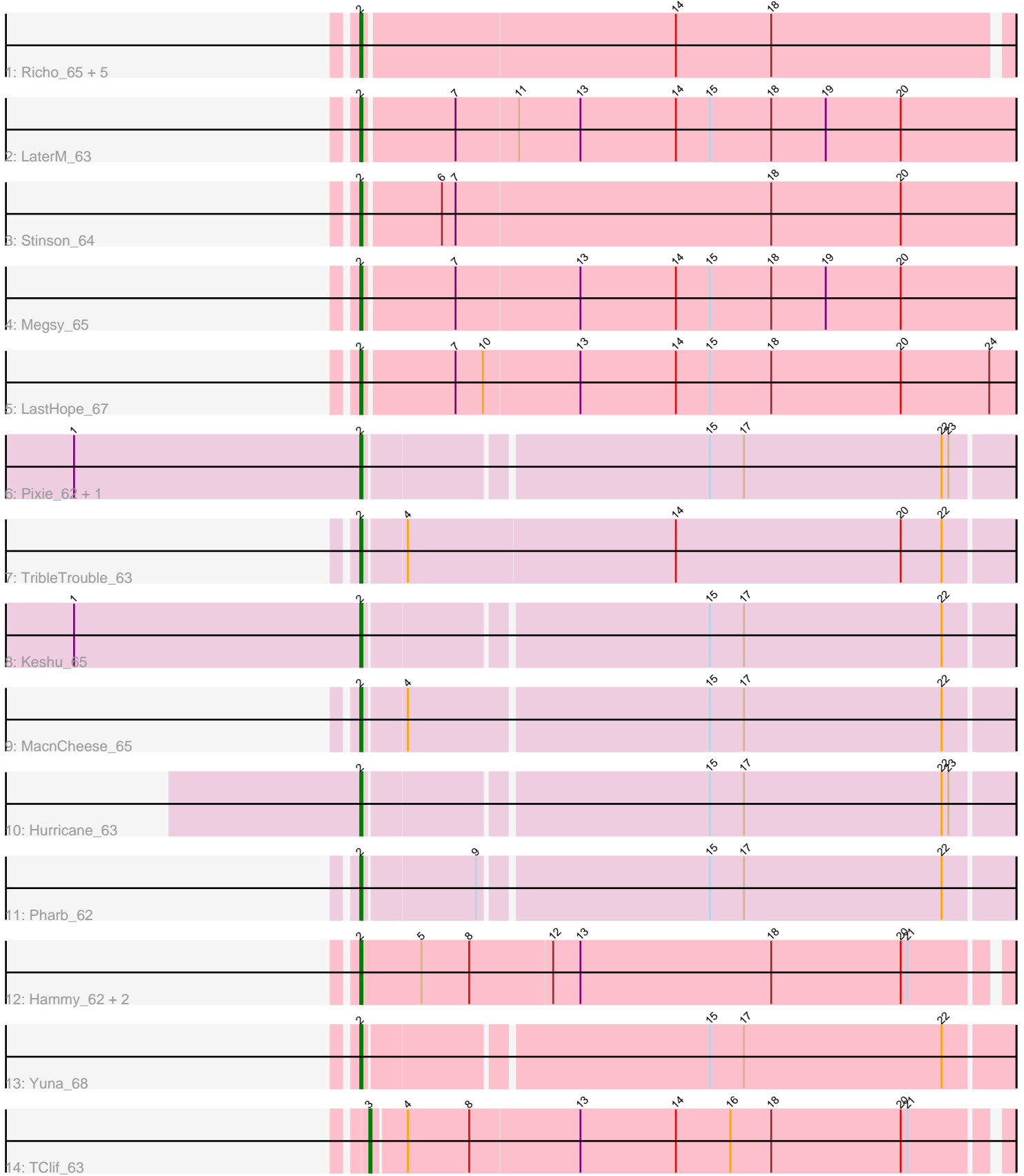


Pham 195672



Note: Tracks are now grouped by subcluster and scaled. Switching in subcluster is indicated by changes in track color. Track scale is now set by default to display the region 30 bp upstream of start 1 to 30 bp downstream of the last possible start. If this default region is judged to be packed too tightly with annotated starts, the track will be further scaled to only show that region of the ORF with annotated starts. This action will be indicated by adding "Zoomed" to the title. For starts, yellow indicates the location of called starts comprised solely of Glimmer/GeneMark auto-annotations, green indicates the location of called starts with at least 1 manual gene annotation.

Pham 195672 Report

This analysis was run 12/09/24 on database version 580.

Pham number 195672 has 22 members, 3 are drafts.

Phages represented in each track:

- Track 1 : Richo_65, Niklas_65, McMater_65, Shaobing_65, Dartin_65, Peanam_65
- Track 2 : LaterM_63
- Track 3 : Stinson_64
- Track 4 : Megsy_65
- Track 5 : LastHope_67
- Track 6 : Pixie_62, ShedlockHolmes_64
- Track 7 : TribbleTrouble_63
- Track 8 : Keshu_65
- Track 9 : MacnCheese_65
- Track 10 : Hurricane_63
- Track 11 : Pharb_62
- Track 12 : Hammy_62, Amohnition_62, DarthP_62
- Track 13 : Yuna_68
- Track 14 : TClif_63

Summary of Final Annotations (See graph section above for start numbers):

The start number called the most often in the published annotations is 2, it was called in 18 of the 19 non-draft genes in the pham.

Genes that call this "Most Annotated" start:

- Amohnition_62, DarthP_62, Dartin_65, Hammy_62, Hurricane_63, Keshu_65, LastHope_67, LaterM_63, MacnCheese_65, McMater_65, Megsy_65, Niklas_65, Peanam_65, Pharb_62, Pixie_62, Richo_65, Shaobing_65, ShedlockHolmes_64, Stinson_64, TribbleTrouble_63, Yuna_68,

Genes that have the "Most Annotated" start but do not call it:

-

Genes that do not have the "Most Annotated" start:

- TClif_63,

Summary by start number:

Start 2:

- Found in 21 of 22 (95.5%) of genes in pham
- Manual Annotations of this start: 18 of 19
- Called 100.0% of time when present
- Phage (with cluster) where this start called: Amohnition_62 (K6), DARTH_P_62 (K6), Dartin_65 (K1), Hammy_62 (K6), Hurricane_63 (K3), Keshu_65 (K3), LastHope_67 (K1), LaterM_63 (K1), MacnCheese_65 (K3), McMater_65 (K1), Megsy_65 (K1), Niklas_65 (K1), Peanam_65 (K1), Pharb_62 (K3), Pixie_62 (K3), Richo_65 (K1), Shaobing_65 (K1), ShedlockHolmes_64 (K3), Stinson_64 (K1), TribbleTrouble_63 (K3), Yuna_68 (K6),

Start 3:

- Found in 1 of 22 (4.5%) of genes in pham
- Manual Annotations of this start: 1 of 19
- Called 100.0% of time when present
- Phage (with cluster) where this start called: TClif_63 (K6),

Summary by clusters:

There are 3 clusters represented in this pham: K3, K1, K6,

Info for manual annotations of cluster K1:

- Start number 2 was manually annotated 7 times for cluster K1.

Info for manual annotations of cluster K3:

- Start number 2 was manually annotated 7 times for cluster K3.

Info for manual annotations of cluster K6:

- Start number 2 was manually annotated 4 times for cluster K6.
- Start number 3 was manually annotated 1 time for cluster K6.

Gene Information:

Gene: Amohnition_62 Start: 42807, Stop: 43085, Start Num: 2

Candidate Starts for Amohnition_62:

(Start: 2 @42807 has 18 MA's), (5, 42834), (8, 42855), (12, 42891), (13, 42903), (18, 42987), (20, 43044), (21, 43047),

Gene: DARTH_P_62 Start: 42661, Stop: 42939, Start Num: 2

Candidate Starts for DARTH_P_62:

(Start: 2 @42661 has 18 MA's), (5, 42688), (8, 42709), (12, 42745), (13, 42757), (18, 42841), (20, 42898), (21, 42901),

Gene: Dartin_65 Start: 42809, Stop: 43087, Start Num: 2

Candidate Starts for Dartin_65:

(Start: 2 @42809 has 18 MA's), (14, 42944), (18, 42986),

Gene: Hammy_62 Start: 42649, Stop: 42927, Start Num: 2

Candidate Starts for Hammy_62:

(Start: 2 @42649 has 18 MA's), (5, 42676), (8, 42697), (12, 42733), (13, 42745), (18, 42829), (20, 42886), (21, 42889),

Gene: Hurricane_63 Start: 42638, Stop: 42913, Start Num: 2
Candidate Starts for Hurricane_63:
(Start: 2 @42638 has 18 MA's), (15, 42782), (17, 42797), (22, 42884), (23, 42887),

Gene: Keshu_65 Start: 42736, Stop: 43011, Start Num: 2
Candidate Starts for Keshu_65:
(1, 42610), (Start: 2 @42736 has 18 MA's), (15, 42880), (17, 42895), (22, 42982),

Gene: LastHope_67 Start: 41744, Stop: 42028, Start Num: 2
Candidate Starts for LastHope_67:
(Start: 2 @41744 has 18 MA's), (7, 41783), (10, 41795), (13, 41837), (14, 41879), (15, 41894), (18, 41921), (20, 41978), (24, 42017),

Gene: LaterM_63 Start: 43006, Stop: 43290, Start Num: 2
Candidate Starts for LaterM_63:
(Start: 2 @43006 has 18 MA's), (7, 43045), (11, 43072), (13, 43099), (14, 43141), (15, 43156), (18, 43183), (19, 43207), (20, 43240),

Gene: MacnCheese_65 Start: 43252, Stop: 43530, Start Num: 2
Candidate Starts for MacnCheese_65:
(Start: 2 @43252 has 18 MA's), (4, 43270), (15, 43399), (17, 43414), (22, 43501),

Gene: McMater_65 Start: 42809, Stop: 43087, Start Num: 2
Candidate Starts for McMater_65:
(Start: 2 @42809 has 18 MA's), (14, 42944), (18, 42986),

Gene: Megsy_65 Start: 42722, Stop: 43006, Start Num: 2
Candidate Starts for Megsy_65:
(Start: 2 @42722 has 18 MA's), (7, 42761), (13, 42815), (14, 42857), (15, 42872), (18, 42899), (19, 42923), (20, 42956),

Gene: Niklas_65 Start: 42870, Stop: 43148, Start Num: 2
Candidate Starts for Niklas_65:
(Start: 2 @42870 has 18 MA's), (14, 43005), (18, 43047),

Gene: Peanam_65 Start: 42828, Stop: 43106, Start Num: 2
Candidate Starts for Peanam_65:
(Start: 2 @42828 has 18 MA's), (14, 42963), (18, 43005),

Gene: Pharb_62 Start: 41985, Stop: 42260, Start Num: 2
Candidate Starts for Pharb_62:
(Start: 2 @41985 has 18 MA's), (9, 42033), (15, 42129), (17, 42144), (22, 42231),

Gene: Pixie_62 Start: 42158, Stop: 42433, Start Num: 2
Candidate Starts for Pixie_62:
(1, 42032), (Start: 2 @42158 has 18 MA's), (15, 42302), (17, 42317), (22, 42404), (23, 42407),

Gene: Richo_65 Start: 42809, Stop: 43087, Start Num: 2
Candidate Starts for Richo_65:
(Start: 2 @42809 has 18 MA's), (14, 42944), (18, 42986),

Gene: Shaobing_65 Start: 42846, Stop: 43124, Start Num: 2

Candidate Starts for Shaobing_65:

(Start: 2 @42846 has 18 MA's), (14, 42981), (18, 43023),

Gene: ShedlockHolmes_64 Start: 42677, Stop: 42952, Start Num: 2

Candidate Starts for ShedlockHolmes_64:

(1, 42551), (Start: 2 @42677 has 18 MA's), (15, 42821), (17, 42836), (22, 42923), (23, 42926),

Gene: Stinson_64 Start: 42939, Stop: 43223, Start Num: 2

Candidate Starts for Stinson_64:

(Start: 2 @42939 has 18 MA's), (6, 42972), (7, 42978), (18, 43116), (20, 43173),

Gene: TClif_63 Start: 42277, Stop: 42549, Start Num: 3

Candidate Starts for TClif_63:

(Start: 3 @42277 has 1 MA's), (4, 42292), (8, 42319), (13, 42367), (14, 42409), (16, 42433), (18, 42451), (20, 42508), (21, 42511),

Gene: TribbleTrouble_63 Start: 43151, Stop: 43432, Start Num: 2

Candidate Starts for TribbleTrouble_63:

(Start: 2 @43151 has 18 MA's), (4, 43169), (14, 43286), (20, 43385), (22, 43403),

Gene: Yuna_68 Start: 43889, Stop: 44164, Start Num: 2

Candidate Starts for Yuna_68:

(Start: 2 @43889 has 18 MA's), (15, 44033), (17, 44048), (22, 44135),