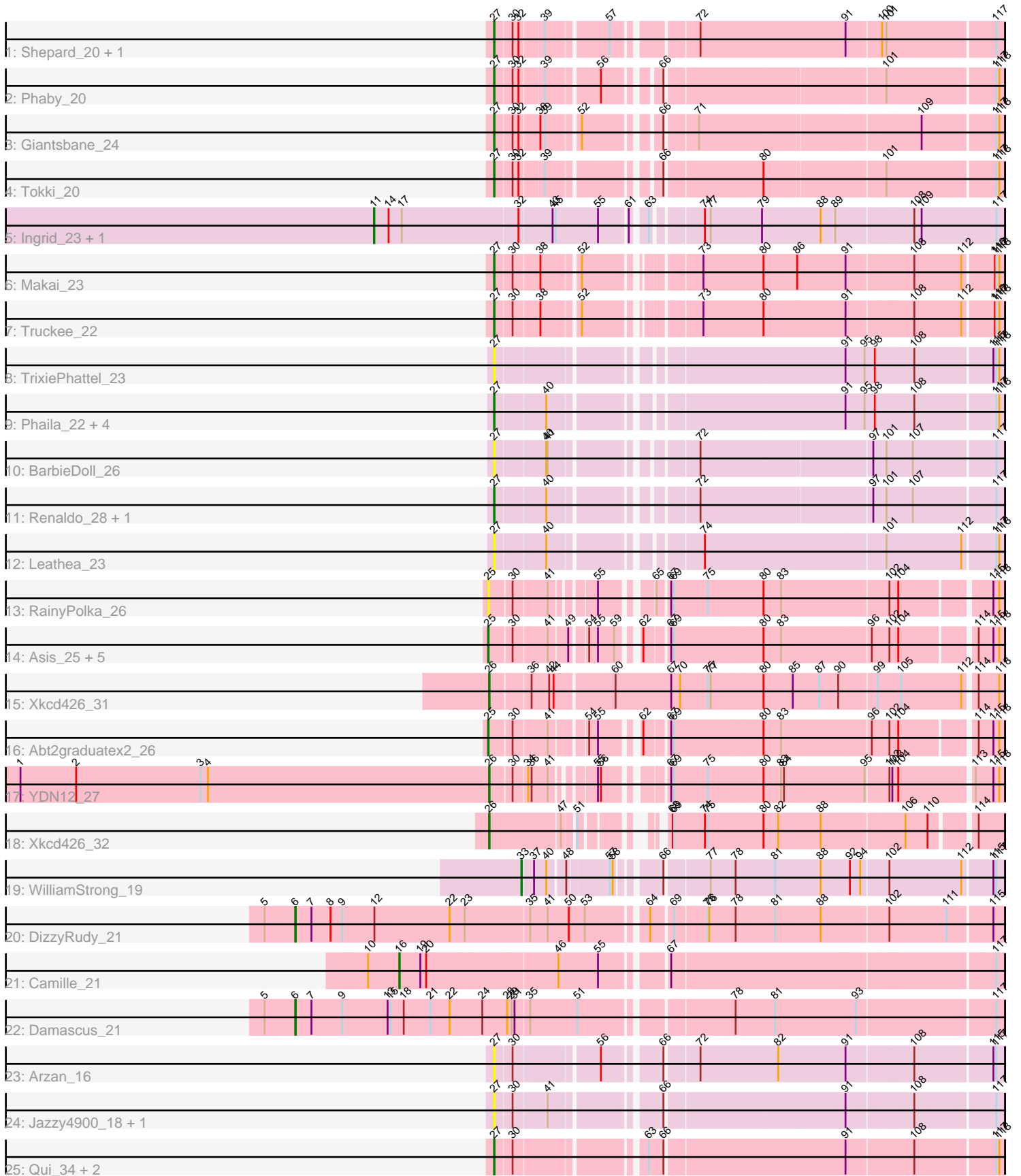


# Pham 195687



Note: Tracks are now grouped by subcluster and scaled. Switching in subcluster is indicated by changes in track color. Track scale is now set by default to display the region 30 bp upstream of start 1 to 30 bp downstream of the last possible start. If this default region is judged to be packed too tightly with annotated starts, the track will be further scaled to only show that region of the ORF with annotated starts. This action will be indicated by adding "Zoomed" to the title. For starts, yellow indicates the location of called starts comprised solely of Glimmer/GeneMark auto-annotations, green indicates the location of called starts with at least 1 manual gene annotation.

## Pham 195687 Report

This analysis was run 12/09/24 on database version 580.

Pham number 195687 has 40 members, 10 are drafts.

Phages represented in each track:

- Track 1 : Shepard\_20, LilHuddy\_20
- Track 2 : Phaby\_20
- Track 3 : Giantsbane\_24
- Track 4 : Tokki\_20
- Track 5 : Ingrid\_23, Loretta\_23
- Track 6 : Makai\_23
- Track 7 : Truckee\_22
- Track 8 : TrixiePhattel\_23
- Track 9 : Phaila\_22, Uzumaki\_23, GantcherGoblin\_22, Argan\_22, Zeina\_23
- Track 10 : BarbieDoll\_26
- Track 11 : Renaldo\_28, Lewando\_26
- Track 12 : Leathea\_23
- Track 13 : RainyPolka\_26
- Track 14 : Asis\_25, BabyGotBac\_25, Salete\_25, BayC\_25, Maih\_25, TP1604\_25
- Track 15 : Xkcd426\_31
- Track 16 : Abt2graduatex2\_26
- Track 17 : YDN12\_27
- Track 18 : Xkcd426\_32
- Track 19 : WilliamStrong\_19
- Track 20 : DizzyRudy\_21
- Track 21 : Camille\_21
- Track 22 : Damascus\_21
- Track 23 : Arzan\_16
- Track 24 : Jazzy4900\_18, Sunny4976\_17
- Track 25 : Qui\_34, Elver\_33, Paella\_34

### ***Summary of Final Annotations (See graph section above for start numbers):***

The start number called the most often in the published annotations is 27, it was called in 14 of the 30 non-draft genes in the pham.

Genes that call this "Most Annotated" start:

- Argan\_22, Arzan\_16, BarbieDoll\_26, Elver\_33, GantcherGoblin\_22, Giantsbane\_24, Jazzy4900\_18, Leathea\_23, Lewando\_26, LilHuddy\_20, Makai\_23, Paella\_34,

Phaby\_20, Phaila\_22, Qui\_34, Renaldo\_28, Shepard\_20, Sunny4976\_17, Tokki\_20, TrixiePhattel\_23, Truckee\_22, Uzumaki\_23, Zeina\_23,

Genes that have the "Most Annotated" start but do not call it:

- 

Genes that do not have the "Most Annotated" start:

• Abt2graduatex2\_26, Asis\_25, BabyGotBac\_25, BayC\_25, Camille\_21, Damascus\_21, DizzyRudy\_21, Ingrid\_23, Loretta\_23, Maih\_25, RainyPolka\_26, Salete\_25, TP1604\_25, WilliamStrong\_19, Xkcd426\_31, Xkcd426\_32, YDN12\_27,

### Summary by start number:

Start 6:

- Found in 2 of 40 ( 5.0% ) of genes in pham
- Manual Annotations of this start: 2 of 30
- Called 100.0% of time when present
- Phage (with cluster) where this start called: Damascus\_21 (EL), DizzyRudy\_21 (EL),

Start 11:

- Found in 2 of 40 ( 5.0% ) of genes in pham
- Manual Annotations of this start: 2 of 30
- Called 100.0% of time when present
- Phage (with cluster) where this start called: Ingrid\_23 (AU3), Loretta\_23 (AU3),

Start 16:

- Found in 1 of 40 ( 2.5% ) of genes in pham
- Manual Annotations of this start: 1 of 30
- Called 100.0% of time when present
- Phage (with cluster) where this start called: Camille\_21 (EL),

Start 25:

- Found in 8 of 40 ( 20.0% ) of genes in pham
- Manual Annotations of this start: 7 of 30
- Called 100.0% of time when present
- Phage (with cluster) where this start called: Abt2graduatex2\_26 (BG), Asis\_25 (BG), BabyGotBac\_25 (BG), BayC\_25 (BG), Maih\_25 (BG), RainyPolka\_26 (BG), Salete\_25 (BG), TP1604\_25 (BG),

Start 26:

- Found in 3 of 40 ( 7.5% ) of genes in pham
- Manual Annotations of this start: 3 of 30
- Called 100.0% of time when present
- Phage (with cluster) where this start called: Xkcd426\_31 (BG), Xkcd426\_32 (BG), YDN12\_27 (BG),

Start 27:

- Found in 23 of 40 ( 57.5% ) of genes in pham
- Manual Annotations of this start: 14 of 30
- Called 100.0% of time when present
- Phage (with cluster) where this start called: Argan\_22 (AU6), Arzan\_16 (FI), BarbieDoll\_26 (AU6), Elver\_33 (FK), GantcherGoblin\_22 (AU6), Giantsbane\_24 (AU2), Jazzy4900\_18 (FI), Leathea\_23 (AU6), Lewando\_26 (AU6), LilHuddy\_20

(AU2), Makai\_23 (AU5), Paella\_34 (FK), Phaby\_20 (AU2), Phaila\_22 (AU6), Qui\_34 (FK), Renaldo\_28 (AU6), Shepard\_20 (AU2), Sunny4976\_17 (FI), Tokki\_20 (AU2), TrixiePhattel\_23 (AU6), Truckee\_22 (AU5), Uzumaki\_23 (AU6), Zeina\_23 (AU6),

Start 33:

- Found in 1 of 40 ( 2.5% ) of genes in pham
- Manual Annotations of this start: 1 of 30
- Called 100.0% of time when present
- Phage (with cluster) where this start called: WilliamStrong\_19 (EA6),

### **Summary by clusters:**

There are 9 clusters represented in this pham: EL, BG, AU3, AU2, AU5, AU6, FI, FK, EA6,

Info for manual annotations of cluster AU2:

- Start number 27 was manually annotated 5 times for cluster AU2.

Info for manual annotations of cluster AU3:

- Start number 11 was manually annotated 2 times for cluster AU3.

Info for manual annotations of cluster AU5:

- Start number 27 was manually annotated 2 times for cluster AU5.

Info for manual annotations of cluster AU6:

- Start number 27 was manually annotated 5 times for cluster AU6.

Info for manual annotations of cluster BG:

- Start number 25 was manually annotated 7 times for cluster BG.
- Start number 26 was manually annotated 3 times for cluster BG.

Info for manual annotations of cluster EA6:

- Start number 33 was manually annotated 1 time for cluster EA6.

Info for manual annotations of cluster EL:

- Start number 6 was manually annotated 2 times for cluster EL.
- Start number 16 was manually annotated 1 time for cluster EL.

Info for manual annotations of cluster FK:

- Start number 27 was manually annotated 2 times for cluster FK.

### **Gene Information:**

Gene: Abt2graduatex2\_26 Start: 24514, Stop: 25437, Start Num: 25

Candidate Starts for Abt2graduatex2\_26:

(Start: 25 @24514 has 7 MA's), (30, 24556), (41, 24622), (54, 24682), (55, 24700), (62, 24760), (67, 24799), (69, 24805), (80, 24982), (83, 25015), (96, 25192), (102, 25225), (104, 25243), (114, 25384), (115, 25414), (118, 25426),

Gene: Argan\_22 Start: 17327, Stop: 18250, Start Num: 27

Candidate Starts for Argan\_22:

(Start: 27 @17327 has 14 MA's), (40, 17423), (91, 17939), (95, 17978), (98, 17999), (108, 18077), (117, 18233), (118, 18239),

Gene: Arzan\_16 Start: 12657, Stop: 13586, Start Num: 27

Candidate Starts for Arzan\_16:

(Start: 27 @12657 has 14 MA's), (30, 12690), (56, 12837), (66, 12939), (72, 12999), (82, 13155), (91, 13284), (108, 13413), (115, 13563), (117, 13569),

Gene: Asis\_25 Start: 23929, Stop: 24852, Start Num: 25

Candidate Starts for Asis\_25:

(Start: 25 @23929 has 7 MA's), (30, 23971), (41, 24037), (49, 24070), (54, 24097), (55, 24115), (59, 24148), (62, 24175), (67, 24214), (69, 24220), (80, 24397), (83, 24430), (96, 24607), (102, 24640), (104, 24658), (114, 24799), (115, 24829), (118, 24841),

Gene: BabyGotBac\_25 Start: 23929, Stop: 24852, Start Num: 25

Candidate Starts for BabyGotBac\_25:

(Start: 25 @23929 has 7 MA's), (30, 23971), (41, 24037), (49, 24070), (54, 24097), (55, 24115), (59, 24148), (62, 24175), (67, 24214), (69, 24220), (80, 24397), (83, 24430), (96, 24607), (102, 24640), (104, 24658), (114, 24799), (115, 24829), (118, 24841),

Gene: BarbieDoll\_26 Start: 19306, Stop: 20223, Start Num: 27

Candidate Starts for BarbieDoll\_26:

(Start: 27 @19306 has 14 MA's), (40, 19402), (41, 19405), (72, 19636), (97, 19969), (101, 19993), (107, 20044), (117, 20206),

Gene: BayC\_25 Start: 23929, Stop: 24852, Start Num: 25

Candidate Starts for BayC\_25:

(Start: 25 @23929 has 7 MA's), (30, 23971), (41, 24037), (49, 24070), (54, 24097), (55, 24115), (59, 24148), (62, 24175), (67, 24214), (69, 24220), (80, 24397), (83, 24430), (96, 24607), (102, 24640), (104, 24658), (114, 24799), (115, 24829), (118, 24841),

Gene: Camille\_21 Start: 14413, Stop: 15567, Start Num: 16

Candidate Starts for Camille\_21:

(10, 14350), (Start: 16 @14413 has 1 MA's), (19, 14455), (20, 14467), (46, 14725), (55, 14806), (67, 14920), (117, 15550),

Gene: Damascus\_21 Start: 14882, Stop: 16249, Start Num: 6

Candidate Starts for Damascus\_21:

(5, 14819), (Start: 6 @14882 has 2 MA's), (7, 14915), (9, 14978), (13, 15071), (15, 15077), (18, 15104), (21, 15158), (22, 15197), (24, 15263), (28, 15311), (29, 15320), (31, 15326), (35, 15353), (51, 15446), (78, 15725), (81, 15806), (93, 15968), (117, 16232),

Gene: DizzyRudy\_21 Start: 14811, Stop: 16178, Start Num: 6

Candidate Starts for DizzyRudy\_21:

(5, 14748), (Start: 6 @14811 has 2 MA's), (7, 14844), (8, 14883), (9, 14907), (12, 14973), (22, 15126), (23, 15156), (35, 15282), (41, 15318), (50, 15357), (53, 15390), (64, 15498), (69, 15534), (75, 15597), (76, 15600), (78, 15654), (81, 15735), (88, 15828), (102, 15957), (111, 16071), (115, 16155),

Gene: Elver\_33 Start: 23694, Stop: 24623, Start Num: 27

Candidate Starts for Elver\_33:

(Start: 27 @23694 has 14 MA's), (30, 23727), (63, 23946), (66, 23976), (91, 24321), (108, 24450), (117, 24606), (118, 24612),

Gene: GantcherGoblin\_22 Start: 17366, Stop: 18289, Start Num: 27

Candidate Starts for GantcherGoblin\_22:

(Start: 27 @17366 has 14 MA's), (40, 17462), (91, 17978), (95, 18017), (98, 18038), (108, 18116), (117, 18272), (118, 18278),

Gene: Giantsbane\_24 Start: 17626, Stop: 18546, Start Num: 27

Candidate Starts for Giantsbane\_24:

(Start: 27 @17626 has 14 MA's), (30, 17659), (32, 17671), (38, 17707), (39, 17716), (52, 17773), (66, 17902), (71, 17956), (109, 18385), (117, 18529), (118, 18535),

Gene: Ingrid\_23 Start: 17977, Stop: 19170, Start Num: 11

Candidate Starts for Ingrid\_23:

(Start: 11 @17977 has 2 MA's), (14, 18007), (17, 18034), (32, 18268), (43, 18331), (45, 18337), (55, 18421), (61, 18475), (63, 18499), (74, 18583), (77, 18595), (79, 18700), (88, 18811), (89, 18841), (108, 18988), (109, 19003), (117, 19153),

Gene: Jazzy4900\_18 Start: 12693, Stop: 13619, Start Num: 27

Candidate Starts for Jazzy4900\_18:

(Start: 27 @12693 has 14 MA's), (30, 12726), (41, 12789), (66, 12975), (91, 13317), (108, 13446), (117, 13602),

Gene: Leathea\_23 Start: 17352, Stop: 18275, Start Num: 27

Candidate Starts for Leathea\_23:

(Start: 27 @17352 has 14 MA's), (40, 17448), (74, 17691), (101, 18045), (112, 18195), (117, 18258), (118, 18264),

Gene: Lewando\_26 Start: 19288, Stop: 20205, Start Num: 27

Candidate Starts for Lewando\_26:

(Start: 27 @19288 has 14 MA's), (40, 19384), (72, 19618), (97, 19951), (101, 19975), (107, 20026), (117, 20188),

Gene: LilHuddy\_20 Start: 14940, Stop: 15875, Start Num: 27

Candidate Starts for LilHuddy\_20:

(Start: 27 @14940 has 14 MA's), (30, 14973), (32, 14985), (39, 15030), (57, 15144), (72, 15285), (91, 15573), (100, 15639), (101, 15648), (117, 15858),

Gene: Loretta\_23 Start: 17977, Stop: 19170, Start Num: 11

Candidate Starts for Loretta\_23:

(Start: 11 @17977 has 2 MA's), (14, 18007), (17, 18034), (32, 18268), (43, 18331), (45, 18337), (55, 18421), (61, 18475), (63, 18499), (74, 18583), (77, 18595), (79, 18700), (88, 18811), (89, 18841), (108, 18988), (109, 19003), (117, 19153),

Gene: Maih\_25 Start: 23928, Stop: 24851, Start Num: 25

Candidate Starts for Maih\_25:

(Start: 25 @23928 has 7 MA's), (30, 23970), (41, 24036), (49, 24069), (54, 24096), (55, 24114), (59, 24147), (62, 24174), (67, 24213), (69, 24219), (80, 24396), (83, 24429), (96, 24606), (102, 24639), (104, 24657), (114, 24798), (115, 24828), (118, 24840),

Gene: Makai\_23 Start: 18454, Stop: 19380, Start Num: 27

Candidate Starts for Makai\_23:

(Start: 27 @18454 has 14 MA's), (30, 18487), (38, 18535), (52, 18601), (73, 18793), (80, 18916), (86, 18979), (91, 19075), (108, 19204), (112, 19300), (116, 19360), (117, 19363), (118, 19369),

Gene: Paella\_34 Start: 23696, Stop: 24625, Start Num: 27

Candidate Starts for Paella\_34:

(Start: 27 @23696 has 14 MA's), (30, 23729), (63, 23948), (66, 23978), (91, 24323), (108, 24452), (117, 24608), (118, 24614),

Gene: Phaby\_20 Start: 14926, Stop: 15846, Start Num: 27

Candidate Starts for Phaby\_20:

(Start: 27 @14926 has 14 MA's), (30, 14959), (32, 14971), (39, 15016), (56, 15112), (66, 15202), (101, 15616), (117, 15829), (118, 15835),

Gene: Phaila\_22 Start: 16944, Stop: 17867, Start Num: 27

Candidate Starts for Phaila\_22:

(Start: 27 @16944 has 14 MA's), (40, 17040), (91, 17556), (95, 17595), (98, 17616), (108, 17694), (117, 17850), (118, 17856),

Gene: Qui\_34 Start: 23696, Stop: 24625, Start Num: 27

Candidate Starts for Qui\_34:

(Start: 27 @23696 has 14 MA's), (30, 23729), (63, 23948), (66, 23978), (91, 24323), (108, 24452), (117, 24608), (118, 24614),

Gene: RainyPolka\_26 Start: 24385, Stop: 25302, Start Num: 25

Candidate Starts for RainyPolka\_26:

(Start: 25 @24385 has 7 MA's), (30, 24427), (41, 24493), (55, 24565), (65, 24646), (67, 24664), (69, 24670), (75, 24736), (80, 24847), (83, 24880), (102, 25090), (104, 25108), (115, 25279), (118, 25291),

Gene: Renaldo\_28 Start: 19297, Stop: 20214, Start Num: 27

Candidate Starts for Renaldo\_28:

(Start: 27 @19297 has 14 MA's), (40, 19393), (72, 19627), (97, 19960), (101, 19984), (107, 20035), (117, 20197),

Gene: Salete\_25 Start: 23929, Stop: 24852, Start Num: 25

Candidate Starts for Salete\_25:

(Start: 25 @23929 has 7 MA's), (30, 23971), (41, 24037), (49, 24070), (54, 24097), (55, 24115), (59, 24148), (62, 24175), (67, 24214), (69, 24220), (80, 24397), (83, 24430), (96, 24607), (102, 24640), (104, 24658), (114, 24799), (115, 24829), (118, 24841),

Gene: Shepard\_20 Start: 14937, Stop: 15872, Start Num: 27

Candidate Starts for Shepard\_20:

(Start: 27 @14937 has 14 MA's), (30, 14970), (32, 14982), (39, 15027), (57, 15141), (72, 15282), (91, 15570), (100, 15636), (101, 15645), (117, 15855),

Gene: Sunny4976\_17 Start: 12693, Stop: 13619, Start Num: 27

Candidate Starts for Sunny4976\_17:

(Start: 27 @12693 has 14 MA's), (30, 12726), (41, 12789), (66, 12975), (91, 13317), (108, 13446), (117, 13602),

Gene: TP1604\_25 Start: 23929, Stop: 24852, Start Num: 25

Candidate Starts for TP1604\_25:

(Start: 25 @23929 has 7 MA's), (30, 23971), (41, 24037), (49, 24070), (54, 24097), (55, 24115), (59, 24148), (62, 24175), (67, 24214), (69, 24220), (80, 24397), (83, 24430), (96, 24607), (102, 24640), (104, 24658), (114, 24799), (115, 24829), (118, 24841),

Gene: Tokki\_20 Start: 14976, Stop: 15896, Start Num: 27

Candidate Starts for Tokki\_20:

(Start: 27 @14976 has 14 MA's), (30, 15009), (32, 15021), (39, 15066), (66, 15252), (80, 15438), (101, 15666), (117, 15879), (118, 15885),

Gene: TrixiePhattel\_23 Start: 17568, Stop: 18491, Start Num: 27

Candidate Starts for TrixiePhattel\_23:

(Start: 27 @17568 has 14 MA's), (91, 18180), (95, 18219), (98, 18240), (108, 18318), (115, 18468), (117, 18474), (118, 18480),

Gene: Truckee\_22 Start: 18499, Stop: 19425, Start Num: 27

Candidate Starts for Truckee\_22:

(Start: 27 @18499 has 14 MA's), (30, 18532), (38, 18580), (52, 18646), (73, 18838), (80, 18961), (91, 19120), (108, 19249), (112, 19345), (116, 19405), (117, 19408), (118, 19414),

Gene: Uzumaki\_23 Start: 18185, Stop: 19108, Start Num: 27

Candidate Starts for Uzumaki\_23:

(Start: 27 @18185 has 14 MA's), (40, 18281), (91, 18797), (95, 18836), (98, 18857), (108, 18935), (117, 19091), (118, 19097),

Gene: WilliamStrong\_19 Start: 16962, Stop: 17843, Start Num: 33

Candidate Starts for WilliamStrong\_19:

(Start: 33 @16962 has 1 MA's), (37, 16983), (40, 17007), (48, 17037), (57, 17115), (58, 17121), (66, 17190), (77, 17268), (78, 17319), (81, 17400), (88, 17493), (92, 17550), (94, 17571), (102, 17622), (112, 17766), (115, 17820), (117, 17826),

Gene: Xkcd426\_31 Start: 31289, Stop: 32287, Start Num: 26

Candidate Starts for Xkcd426\_31:

(Start: 26 @31289 has 3 MA's), (36, 31364), (42, 31400), (44, 31409), (60, 31526), (67, 31640), (70, 31658), (75, 31715), (77, 31721), (80, 31826), (85, 31883), (87, 31937), (90, 31976), (99, 32045), (105, 32093), (112, 32213), (114, 32234), (118, 32276),

Gene: Xkcd426\_32 Start: 32302, Stop: 33195, Start Num: 26

Candidate Starts for Xkcd426\_32:

(Start: 26 @32302 has 3 MA's), (47, 32443), (51, 32464), (68, 32566), (69, 32569), (74, 32629), (75, 32635), (80, 32746), (82, 32773), (88, 32860), (106, 33025), (110, 33067), (114, 33142),

Gene: YDN12\_27 Start: 23900, Stop: 24817, Start Num: 26

Candidate Starts for YDN12\_27:

(1, 22943), (2, 23057), (3, 23312), (4, 23327), (Start: 26 @23900 has 3 MA's), (30, 23942), (34, 23969), (36, 23975), (41, 24008), (55, 24074), (56, 24080), (67, 24173), (69, 24179), (75, 24245), (80, 24356), (83, 24389), (84, 24395), (95, 24557), (102, 24599), (103, 24605), (104, 24617), (113, 24758), (115, 24794), (118, 24806),

Gene: Zeina\_23 Start: 17566, Stop: 18489, Start Num: 27

Candidate Starts for Zeina\_23:

(Start: 27 @17566 has 14 MA's), (40, 17662), (91, 18178), (95, 18217), (98, 18238), (108, 18316), (117, 18472), (118, 18478),