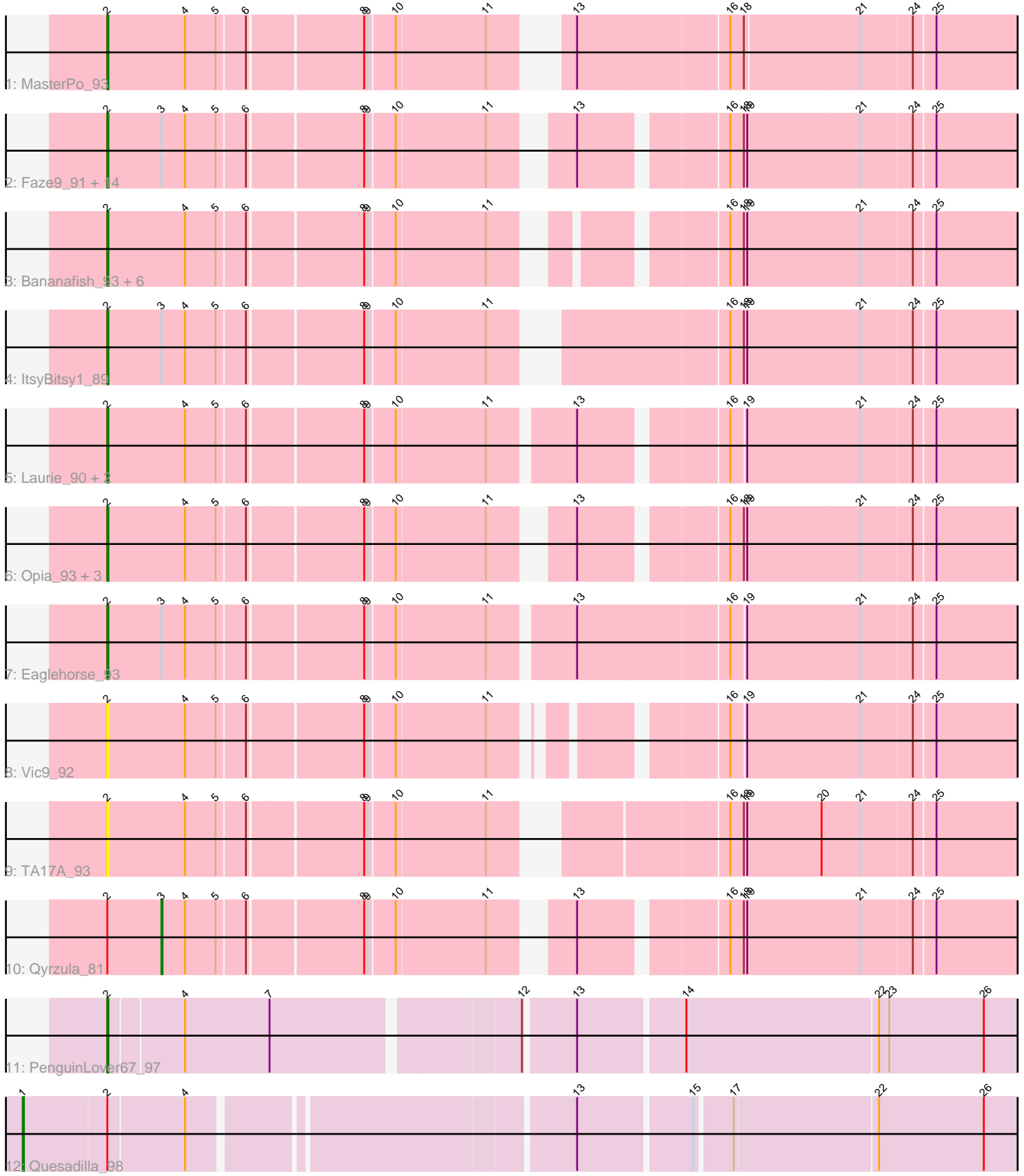


Pham 195696



Note: Tracks are now grouped by subcluster and scaled. Switching in subcluster is indicated by changes in track color. Track scale is now set by default to display the region 30 bp upstream of start 1 to 30 bp downstream of the last possible start. If this default region is judged to be packed too tightly with annotated starts, the track will be further scaled to only show that region of the ORF with annotated starts. This action will be indicated by adding "Zoomed" to the title. For starts, yellow indicates the location of called starts comprised solely of Glimmer/GeneMark auto-annotations, green indicates the location of called starts with at least 1 manual gene annotation.

Pham 195696 Report

This analysis was run 12/09/24 on database version 580.

Pham number 195696 has 37 members, 3 are drafts.

Phages represented in each track:

- Track 1 : MasterPo_93
- Track 2 : Faze9_91, Coffee_91, Glass_94, Lars_93, Ares_92, West99_92, LizLemon_92, Rosebush_90, Tinciduntolum_93, FrenchFry_93, Brownie5_92, Kaleb_92, Hedgerow_92, Boyle_92, Calamitous_93
- Track 3 : Bananafish_93, Sabella_92, Arbiter_88, Blocker23_92, Godines_91, Lephleur_92, Kheth_92
- Track 4 : ItsyBitsy1_89
- Track 5 : Laurie_90, Holeinone_91, Tres_92
- Track 6 : Opia_93, Phantasmagoria_90, Allegro_92, Rhinoforte_92
- Track 7 : Eaglehorse_93
- Track 8 : Vic9_92
- Track 9 : TA17A_93
- Track 10 : Qyrzula_81
- Track 11 : PenguinLover67_97
- Track 12 : Quesadilla_98

Summary of Final Annotations (See graph section above for start numbers):

The start number called the most often in the published annotations is 2, it was called in 32 of the 34 non-draft genes in the pham.

Genes that call this "Most Annotated" start:

- Allegro_92, Arbiter_88, Ares_92, Bananafish_93, Blocker23_92, Boyle_92, Brownie5_92, Calamitous_93, Coffee_91, Eaglehorse_93, Faze9_91, FrenchFry_93, Glass_94, Godines_91, Hedgerow_92, Holeinone_91, ItsyBitsy1_89, Kaleb_92, Kheth_92, Lars_93, Laurie_90, Lephleur_92, LizLemon_92, MasterPo_93, Opia_93, PenguinLover67_97, Phantasmagoria_90, Rhinoforte_92, Rosebush_90, Sabella_92, TA17A_93, Tinciduntolum_93, Tres_92, Vic9_92, West99_92,

Genes that have the "Most Annotated" start but do not call it:

- Quesadilla_98, Qyrzula_81,

Genes that do not have the "Most Annotated" start:

-

Summary by start number:

Start 1:

- Found in 1 of 37 (2.7%) of genes in pham
- Manual Annotations of this start: 1 of 34
- Called 100.0% of time when present
- Phage (with cluster) where this start called: Quesadilla_98 (B9),

Start 2:

- Found in 37 of 37 (100.0%) of genes in pham
- Manual Annotations of this start: 32 of 34
- Called 94.6% of time when present
- Phage (with cluster) where this start called: Allegro_92 (B2), Arbiter_88 (B2), Ares_92 (B2), Bananafish_93 (B2), Blocker23_92 (B2), Boyle_92 (B2), Brownie5_92 (B2), Calamitous_93 (B2), Coffee_91 (B2), Eaglehorse_93 (B2), Faze9_91 (B2), FrenchFry_93 (B2), Glass_94 (B2), Godines_91 (B2), Hedgerow_92 (B2), Holeinone_91 (B2), ItsyBitsy1_89 (B2), Kaleb_92 (B2), Kheth_92 (B2), Lars_93 (B2), Laurie_90 (B2), Lephleur_92 (B2), LizLemon_92 (B2), MasterPo_93 (B2), Opia_93 (B2), PenguinLover67_97 (B9), Phantasmagoria_90 (B2), Rhinoforte_92 (B2), Rosebush_90 (B2), Sabella_92 (B2), TA17A_93 (B2), Tinciduntolum_93 (B2), Tres_92 (B2), Vic9_92 (B2), West99_92 (B2),

Start 3:

- Found in 18 of 37 (48.6%) of genes in pham
- Manual Annotations of this start: 1 of 34
- Called 5.6% of time when present
- Phage (with cluster) where this start called: Qyrzula_81 (B2),

Summary by clusters:

There are 2 clusters represented in this pham: B9, B2,

Info for manual annotations of cluster B2:

- Start number 2 was manually annotated 31 times for cluster B2.
- Start number 3 was manually annotated 1 time for cluster B2.

Info for manual annotations of cluster B9:

- Start number 1 was manually annotated 1 time for cluster B9.
- Start number 2 was manually annotated 1 time for cluster B9.

Gene Information:

Gene: Allegro_92 Start: 67275, Stop: 66520, Start Num: 2

Candidate Starts for Allegro_92:

(Start: 2 @67275 has 32 MA's), (4, 67206), (5, 67179), (6, 67155), (8, 67059), (9, 67056), (10, 67035), (11, 66957), (13, 66903), (16, 66789), (18, 66777), (19, 66774), (21, 66675), (24, 66630), (25, 66612),

Gene: Arbiter_88 Start: 67005, Stop: 66247, Start Num: 2

Candidate Starts for Arbiter_88:

(Start: 2 @67005 has 32 MA's), (4, 66936), (5, 66909), (6, 66885), (8, 66789), (9, 66786), (10, 66765), (11, 66687), (16, 66516), (18, 66504), (19, 66501), (21, 66402), (24, 66357), (25, 66339),

Gene: Ares_92 Start: 67272, Stop: 66517, Start Num: 2

Candidate Starts for Ares_92:

(Start: 2 @67272 has 32 MA's), (Start: 3 @67224 has 1 MA's), (4, 67203), (5, 67176), (6, 67152), (8, 67056), (9, 67053), (10, 67032), (11, 66954), (13, 66900), (16, 66786), (18, 66774), (19, 66771), (21, 66672), (24, 66627), (25, 66609),

Gene: Bananafish_93 Start: 67203, Stop: 66457, Start Num: 2

Candidate Starts for Bananafish_93:

(Start: 2 @67203 has 32 MA's), (4, 67134), (5, 67107), (6, 67083), (8, 66987), (9, 66984), (10, 66963), (11, 66885), (16, 66726), (18, 66714), (19, 66711), (21, 66612), (24, 66567), (25, 66549),

Gene: Blocker23_92 Start: 67238, Stop: 66522, Start Num: 2

Candidate Starts for Blocker23_92:

(Start: 2 @67238 has 32 MA's), (4, 67169), (5, 67142), (6, 67118), (8, 67022), (9, 67019), (10, 66998), (11, 66920), (16, 66791), (18, 66779), (19, 66776), (21, 66677), (24, 66632), (25, 66614),

Gene: Boyle_92 Start: 67327, Stop: 66572, Start Num: 2

Candidate Starts for Boyle_92:

(Start: 2 @67327 has 32 MA's), (Start: 3 @67279 has 1 MA's), (4, 67258), (5, 67231), (6, 67207), (8, 67111), (9, 67108), (10, 67087), (11, 67009), (13, 66955), (16, 66841), (18, 66829), (19, 66826), (21, 66727), (24, 66682), (25, 66664),

Gene: Brownie5_92 Start: 67333, Stop: 66578, Start Num: 2

Candidate Starts for Brownie5_92:

(Start: 2 @67333 has 32 MA's), (Start: 3 @67285 has 1 MA's), (4, 67264), (5, 67237), (6, 67213), (8, 67117), (9, 67114), (10, 67093), (11, 67015), (13, 66961), (16, 66847), (18, 66835), (19, 66832), (21, 66733), (24, 66688), (25, 66670),

Gene: Calamitous_93 Start: 67207, Stop: 66452, Start Num: 2

Candidate Starts for Calamitous_93:

(Start: 2 @67207 has 32 MA's), (Start: 3 @67159 has 1 MA's), (4, 67138), (5, 67111), (6, 67087), (8, 66991), (9, 66988), (10, 66967), (11, 66889), (13, 66835), (16, 66721), (18, 66709), (19, 66706), (21, 66607), (24, 66562), (25, 66544),

Gene: Coffee_91 Start: 67317, Stop: 66562, Start Num: 2

Candidate Starts for Coffee_91:

(Start: 2 @67317 has 32 MA's), (Start: 3 @67269 has 1 MA's), (4, 67248), (5, 67221), (6, 67197), (8, 67101), (9, 67098), (10, 67077), (11, 66999), (13, 66945), (16, 66831), (18, 66819), (19, 66816), (21, 66717), (24, 66672), (25, 66654),

Gene: Eaglehorse_93 Start: 67227, Stop: 66445, Start Num: 2

Candidate Starts for Eaglehorse_93:

(Start: 2 @67227 has 32 MA's), (Start: 3 @67179 has 1 MA's), (4, 67158), (5, 67131), (6, 67107), (8, 67011), (9, 67008), (10, 66987), (11, 66909), (13, 66840), (16, 66711), (19, 66699), (21, 66600), (24, 66555), (25, 66537),

Gene: Faze9_91 Start: 67339, Stop: 66584, Start Num: 2

Candidate Starts for Faze9_91:

(Start: 2 @67339 has 32 MA's), (Start: 3 @67291 has 1 MA's), (4, 67270), (5, 67243), (6, 67219), (8, 67123), (9, 67120), (10, 67099), (11, 67021), (13, 66967), (16, 66853), (18, 66841), (19, 66838), (21,

66739), (24, 66694), (25, 66676),

Gene: FrenchFry_93 Start: 67330, Stop: 66575, Start Num: 2

Candidate Starts for FrenchFry_93:

(Start: 2 @67330 has 32 MA's), (Start: 3 @67282 has 1 MA's), (4, 67261), (5, 67234), (6, 67210), (8, 67114), (9, 67111), (10, 67090), (11, 67012), (13, 66958), (16, 66844), (18, 66832), (19, 66829), (21, 66730), (24, 66685), (25, 66667),

Gene: Glass_94 Start: 67345, Stop: 66590, Start Num: 2

Candidate Starts for Glass_94:

(Start: 2 @67345 has 32 MA's), (Start: 3 @67297 has 1 MA's), (4, 67276), (5, 67249), (6, 67225), (8, 67129), (9, 67126), (10, 67105), (11, 67027), (13, 66973), (16, 66859), (18, 66847), (19, 66844), (21, 66745), (24, 66700), (25, 66682),

Gene: Godines_91 Start: 67113, Stop: 66382, Start Num: 2

Candidate Starts for Godines_91:

(Start: 2 @67113 has 32 MA's), (4, 67044), (5, 67017), (6, 66993), (8, 66897), (9, 66894), (10, 66873), (11, 66795), (16, 66651), (18, 66639), (19, 66636), (21, 66537), (24, 66492), (25, 66474),

Gene: Hedgerow_92 Start: 67287, Stop: 66532, Start Num: 2

Candidate Starts for Hedgerow_92:

(Start: 2 @67287 has 32 MA's), (Start: 3 @67239 has 1 MA's), (4, 67218), (5, 67191), (6, 67167), (8, 67071), (9, 67068), (10, 67047), (11, 66969), (13, 66915), (16, 66801), (18, 66789), (19, 66786), (21, 66687), (24, 66642), (25, 66624),

Gene: Holeinone_91 Start: 66880, Stop: 66101, Start Num: 2

Candidate Starts for Holeinone_91:

(Start: 2 @66880 has 32 MA's), (4, 66811), (5, 66784), (6, 66760), (8, 66664), (9, 66661), (10, 66640), (11, 66562), (13, 66481), (16, 66367), (19, 66355), (21, 66256), (24, 66211), (25, 66193),

Gene: ItsyBitsy1_89 Start: 67406, Stop: 66648, Start Num: 2

Candidate Starts for ItsyBitsy1_89:

(Start: 2 @67406 has 32 MA's), (Start: 3 @67358 has 1 MA's), (4, 67337), (5, 67310), (6, 67286), (8, 67190), (9, 67187), (10, 67166), (11, 67088), (16, 66917), (18, 66905), (19, 66902), (21, 66803), (24, 66758), (25, 66740),

Gene: Kaleb_92 Start: 67339, Stop: 66584, Start Num: 2

Candidate Starts for Kaleb_92:

(Start: 2 @67339 has 32 MA's), (Start: 3 @67291 has 1 MA's), (4, 67270), (5, 67243), (6, 67219), (8, 67123), (9, 67120), (10, 67099), (11, 67021), (13, 66967), (16, 66853), (18, 66841), (19, 66838), (21, 66739), (24, 66694), (25, 66676),

Gene: Kheth_92 Start: 67242, Stop: 66484, Start Num: 2

Candidate Starts for Kheth_92:

(Start: 2 @67242 has 32 MA's), (4, 67173), (5, 67146), (6, 67122), (8, 67026), (9, 67023), (10, 67002), (11, 66924), (16, 66753), (18, 66741), (19, 66738), (21, 66639), (24, 66594), (25, 66576),

Gene: Lars_93 Start: 67304, Stop: 66549, Start Num: 2

Candidate Starts for Lars_93:

(Start: 2 @67304 has 32 MA's), (Start: 3 @67256 has 1 MA's), (4, 67235), (5, 67208), (6, 67184), (8, 67088), (9, 67085), (10, 67064), (11, 66986), (13, 66932), (16, 66818), (18, 66806), (19, 66803), (21, 66704), (24, 66659), (25, 66641),

Gene: Laurie_90 Start: 66343, Stop: 65576, Start Num: 2

Candidate Starts for Laurie_90:

(Start: 2 @66343 has 32 MA's), (4, 66274), (5, 66247), (6, 66223), (8, 66127), (9, 66124), (10, 66103), (11, 66025), (13, 65956), (16, 65842), (19, 65830), (21, 65731), (24, 65686), (25, 65668),

Gene: Lephleur_92 Start: 67185, Stop: 66427, Start Num: 2

Candidate Starts for Lephleur_92:

(Start: 2 @67185 has 32 MA's), (4, 67116), (5, 67089), (6, 67065), (8, 66969), (9, 66966), (10, 66945), (11, 66867), (16, 66696), (18, 66684), (19, 66681), (21, 66582), (24, 66537), (25, 66519),

Gene: LizLemon_92 Start: 67332, Stop: 66577, Start Num: 2

Candidate Starts for LizLemon_92:

(Start: 2 @67332 has 32 MA's), (Start: 3 @67284 has 1 MA's), (4, 67263), (5, 67236), (6, 67212), (8, 67116), (9, 67113), (10, 67092), (11, 67014), (13, 66960), (16, 66846), (18, 66834), (19, 66831), (21, 66732), (24, 66687), (25, 66669),

Gene: MasterPo_93 Start: 67197, Stop: 66442, Start Num: 2

Candidate Starts for MasterPo_93:

(Start: 2 @67197 has 32 MA's), (4, 67128), (5, 67101), (6, 67077), (8, 66981), (9, 66978), (10, 66957), (11, 66879), (13, 66837), (16, 66708), (18, 66696), (21, 66597), (24, 66552), (25, 66534),

Gene: Opia_93 Start: 67237, Stop: 66482, Start Num: 2

Candidate Starts for Opia_93:

(Start: 2 @67237 has 32 MA's), (4, 67168), (5, 67141), (6, 67117), (8, 67021), (9, 67018), (10, 66997), (11, 66919), (13, 66865), (16, 66751), (18, 66739), (19, 66736), (21, 66637), (24, 66592), (25, 66574),

Gene: PenguinLover67_97 Start: 70072, Stop: 69290, Start Num: 2

Candidate Starts for PenguinLover67_97:

(Start: 2 @70072 has 32 MA's), (4, 70009), (7, 69934), (12, 69727), (13, 69685), (14, 69595), (22, 69427), (23, 69418), (26, 69334),

Gene: Phantasmagoria_90 Start: 66882, Stop: 66139, Start Num: 2

Candidate Starts for Phantasmagoria_90:

(Start: 2 @66882 has 32 MA's), (4, 66813), (5, 66786), (6, 66762), (8, 66666), (9, 66663), (10, 66642), (11, 66564), (13, 66522), (16, 66408), (18, 66396), (19, 66393), (21, 66294), (24, 66249), (25, 66231),

Gene: Quesadilla_98 Start: 70830, Stop: 69991, Start Num: 1

Candidate Starts for Quesadilla_98:

(Start: 1 @70830 has 1 MA's), (Start: 2 @70758 has 32 MA's), (4, 70692), (13, 70377), (15, 70281), (17, 70251), (22, 70128), (26, 70035),

Gene: Qyrzula_81 Start: 66976, Stop: 66269, Start Num: 3

Candidate Starts for Qyrzula_81:

(Start: 2 @67024 has 32 MA's), (Start: 3 @66976 has 1 MA's), (4, 66955), (5, 66928), (6, 66904), (8, 66808), (9, 66805), (10, 66784), (11, 66706), (13, 66652), (16, 66538), (18, 66526), (19, 66523), (21, 66424), (24, 66379), (25, 66361),

Gene: Rhinoforte_92 Start: 67247, Stop: 66492, Start Num: 2

Candidate Starts for Rhinoforte_92:

(Start: 2 @67247 has 32 MA's), (4, 67178), (5, 67151), (6, 67127), (8, 67031), (9, 67028), (10, 67007), (11, 66929), (13, 66875), (16, 66761), (18, 66749), (19, 66746), (21, 66647), (24, 66602), (25, 66584),

Gene: Rosebush_90 Start: 67316, Stop: 66561, Start Num: 2

Candidate Starts for Rosebush_90:

(Start: 2 @67316 has 32 MA's), (Start: 3 @67268 has 1 MA's), (4, 67247), (5, 67220), (6, 67196), (8, 67100), (9, 67097), (10, 67076), (11, 66998), (13, 66944), (16, 66830), (18, 66818), (19, 66815), (21, 66716), (24, 66671), (25, 66653),

Gene: Sabella_92 Start: 67140, Stop: 66394, Start Num: 2

Candidate Starts for Sabella_92:

(Start: 2 @67140 has 32 MA's), (4, 67071), (5, 67044), (6, 67020), (8, 66924), (9, 66921), (10, 66900), (11, 66822), (16, 66663), (18, 66651), (19, 66648), (21, 66549), (24, 66504), (25, 66486),

Gene: TA17A_93 Start: 67160, Stop: 66405, Start Num: 2

Candidate Starts for TA17A_93:

(Start: 2 @67160 has 32 MA's), (4, 67091), (5, 67064), (6, 67040), (8, 66944), (9, 66941), (10, 66920), (11, 66842), (16, 66674), (18, 66662), (19, 66659), (20, 66593), (21, 66560), (24, 66515), (25, 66497),

Gene: Tinciduntolum_93 Start: 67332, Stop: 66577, Start Num: 2

Candidate Starts for Tinciduntolum_93:

(Start: 2 @67332 has 32 MA's), (Start: 3 @67284 has 1 MA's), (4, 67263), (5, 67236), (6, 67212), (8, 67116), (9, 67113), (10, 67092), (11, 67014), (13, 66960), (16, 66846), (18, 66834), (19, 66831), (21, 66732), (24, 66687), (25, 66669),

Gene: Tres_92 Start: 67185, Stop: 66418, Start Num: 2

Candidate Starts for Tres_92:

(Start: 2 @67185 has 32 MA's), (4, 67116), (5, 67089), (6, 67065), (8, 66969), (9, 66966), (10, 66945), (11, 66867), (13, 66798), (16, 66684), (19, 66672), (21, 66573), (24, 66528), (25, 66510),

Gene: Vic9_92 Start: 67379, Stop: 66633, Start Num: 2

Candidate Starts for Vic9_92:

(Start: 2 @67379 has 32 MA's), (4, 67310), (5, 67283), (6, 67259), (8, 67163), (9, 67160), (10, 67139), (11, 67061), (16, 66899), (19, 66887), (21, 66788), (24, 66743), (25, 66725),

Gene: West99_92 Start: 67352, Stop: 66597, Start Num: 2

Candidate Starts for West99_92:

(Start: 2 @67352 has 32 MA's), (Start: 3 @67304 has 1 MA's), (4, 67283), (5, 67256), (6, 67232), (8, 67136), (9, 67133), (10, 67112), (11, 67034), (13, 66980), (16, 66866), (18, 66854), (19, 66851), (21, 66752), (24, 66707), (25, 66689),