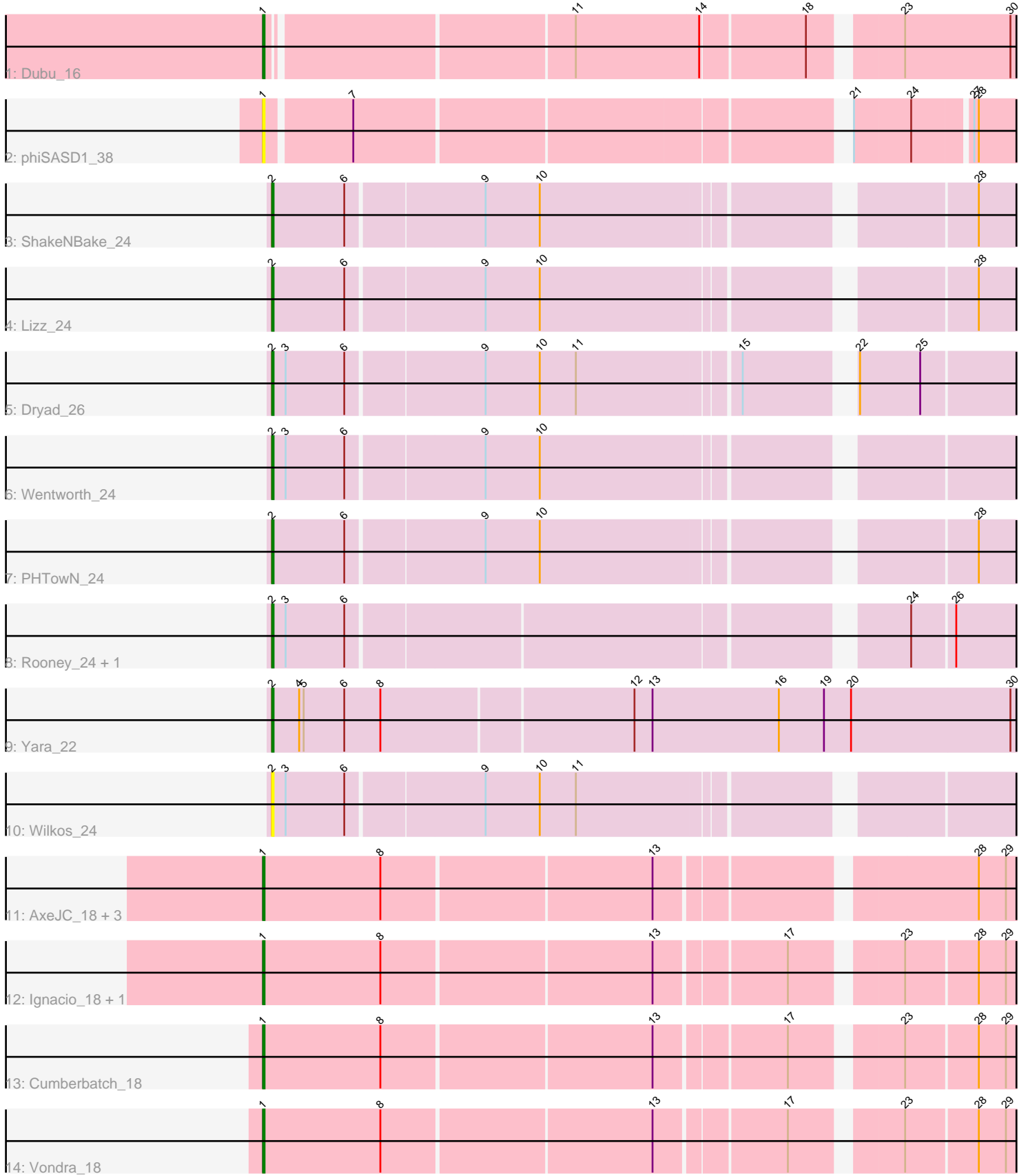


Zoomed Pham 195795



Note: Tracks are now grouped by subcluster and scaled. Switching in subcluster is indicated by changes in track color. Track scale is now set by default to display the region 30 bp upstream of start 1 to 30 bp downstream of the last possible start. If this default region is judged to be packed too tightly with annotated starts, the track will be further scaled to only show that region of the ORF with annotated starts. This action will be indicated by adding "Zoomed" to the title. For starts, yellow indicates the location of called starts comprised solely of Glimmer/GeneMark auto-annotations, green indicates the location of called starts with at least 1 manual gene annotation.

Pham 195795 Report

This analysis was run 12/09/24 on database version 580.

Pham number 195795 has 19 members, 2 are drafts.

Phages represented in each track:

- Track 1 : Dubu_16
- Track 2 : phiSASD1_38
- Track 3 : ShakeNBake_24
- Track 4 : Lizz_24
- Track 5 : Dryad_26
- Track 6 : Wentworth_24
- Track 7 : PHTowN_24
- Track 8 : Rooney_24, Gibson_24
- Track 9 : Yara_22
- Track 10 : Wilkos_24
- Track 11 : AxeJC_18, Piccadilly_18, Eastland_18, Eklok_18
- Track 12 : Ignacio_18, HFrancette_18
- Track 13 : Cumberbatch_18
- Track 14 : Vondra_18

Summary of Final Annotations (See graph section above for start numbers):

The start number called the most often in the published annotations is 1, it was called in 9 of the 17 non-draft genes in the pham.

Genes that call this "Most Annotated" start:

- AxeJC_18, Cumberbatch_18, Dubu_16, Eastland_18, Eklok_18, HFrancette_18, Ignacio_18, Piccadilly_18, Vondra_18, phiSASD1_38,

Genes that have the "Most Annotated" start but do not call it:

-

Genes that do not have the "Most Annotated" start:

- Dryad_26, Gibson_24, Lizz_24, PHTowN_24, Rooney_24, ShakeNBake_24, Wentworth_24, Wilkos_24, Yara_22,

Summary by start number:

Start 1:

- Found in 10 of 19 (52.6%) of genes in pham
- Manual Annotations of this start: 9 of 17
- Called 100.0% of time when present
- Phage (with cluster) where this start called: AxeJC_18 (BP), Cumberbatch_18 (BP), Dubu_16 (BJ), Eastland_18 (BP), Eklok_18 (BP), HFrancette_18 (BP), Ignacio_18 (BP), Piccadilly_18 (BP), Vondra_18 (BP), phiSASD1_38 (BJ),

Start 2:

- Found in 9 of 19 (47.4%) of genes in pham
- Manual Annotations of this start: 8 of 17
- Called 100.0% of time when present
- Phage (with cluster) where this start called: Dryad_26 (BN), Gibson_24 (BN), Lizz_24 (BN), PHTowN_24 (BN), Rooney_24 (BN), ShakeNBake_24 (BN), Wentworth_24 (BN), Wilkos_24 (BN), Yara_22 (BN),

Summary by clusters:

There are 3 clusters represented in this pham: BN, BP, BJ,

Info for manual annotations of cluster BJ:

- Start number 1 was manually annotated 1 time for cluster BJ.

Info for manual annotations of cluster BN:

- Start number 2 was manually annotated 8 times for cluster BN.

Info for manual annotations of cluster BP:

- Start number 1 was manually annotated 8 times for cluster BP.

Gene Information:

Gene: AxeJC_18 Start: 13340, Stop: 16588, Start Num: 1

Candidate Starts for AxeJC_18:

(Start: 1 @13340 has 9 MA's), (8, 13418), (13, 13592), (28, 13784), (29, 13802), (31, 13823), (40, 13931), (54, 14093), (57, 14120), (66, 14246), (68, 14294), (69, 14300), (73, 14408), (74, 14456), (76, 14471), (85, 14540), (87, 14561), (89, 14576), (91, 14597), (93, 14618), (102, 14741), (104, 14762), (107, 14786), (108, 14810), (109, 14816), (112, 14846), (117, 14915), (119, 14933), (121, 14966), (126, 15110), (128, 15158), (129, 15185), (136, 15239), (139, 15257), (144, 15326), (147, 15383), (151, 15485), (160, 15620), (173, 15743), (175, 15785), (176, 15788), (177, 15800), (182, 15845), (183, 15893), (184, 15899), (191, 16010), (194, 16037), (196, 16043), (200, 16079), (206, 16169), (212, 16205), (213, 16214), (221, 16310), (229, 16361), (235, 16433),

Gene: Cumberbatch_18 Start: 13326, Stop: 16589, Start Num: 1

Candidate Starts for Cumberbatch_18:

(Start: 1 @13326 has 9 MA's), (8, 13404), (13, 13578), (17, 13659), (23, 13722), (28, 13767), (29, 13785), (41, 13938), (49, 14070), (50, 14073), (55, 14118), (56, 14121), (66, 14247), (68, 14295), (69, 14301), (73, 14409), (74, 14457), (76, 14472), (85, 14541), (87, 14562), (89, 14577), (91, 14598), (93, 14619), (102, 14742), (104, 14763), (107, 14787), (108, 14811), (109, 14817), (112, 14847), (117, 14916), (119, 14934), (121, 14967), (126, 15111), (128, 15159), (129, 15186), (136, 15240), (139, 15258), (142, 15303), (144, 15327), (146, 15378), (147, 15384), (151, 15486), (160, 15621), (173, 15744), (175, 15786), (176, 15789), (177, 15801), (182, 15846), (183, 15894), (184, 15900), (191, 16011), (194, 16038), (196, 16044), (200, 16080), (206, 16170), (212, 16206), (213, 16215), (221,

16311), (229, 16362), (235, 16434),

Gene: Dryad_26 Start: 14984, Stop: 18892, Start Num: 2

Candidate Starts for Dryad_26:

(Start: 2 @14984 has 8 MA's), (3, 14993), (6, 15032), (9, 15119), (10, 15155), (11, 15179), (15, 15281), (22, 15341), (25, 15380), (33, 15494), (36, 15518), (42, 15611), (43, 15626), (52, 15743), (54, 15758), (58, 15788), (59, 15800), (60, 15845), (64, 15911), (65, 15914), (67, 15965), (70, 16004), (73, 16082), (75, 16139), (82, 16214), (91, 16295), (92, 16298), (94, 16382), (96, 16397), (106, 16517), (113, 16622), (116, 16634), (117, 16643), (120, 16664), (148, 17135), (153, 17249), (154, 17261), (158, 17321), (159, 17330), (165, 17411), (188, 17684), (189, 17690), (193, 17741), (201, 17792), (205, 17846), (210, 17882), (211, 17891), (214, 17906), (219, 17963), (223, 18014), (227, 18050), (238, 18152), (242, 18182), (250, 18302), (255, 18374), (256, 18380), (264, 18581), (265, 18590), (274, 18758), (276, 18785), (279, 18842), (283, 18881), (284, 18887),

Gene: Dubu_16 Start: 11016, Stop: 14837, Start Num: 1

Candidate Starts for Dubu_16:

(Start: 1 @11016 has 9 MA's), (11, 11208), (14, 11289), (18, 11355), (23, 11406), (30, 11475), (37, 11568), (43, 11664), (45, 11724), (46, 11733), (48, 11739), (61, 11877), (73, 12105), (74, 12153), (76, 12168), (80, 12192), (81, 12204), (88, 12270), (90, 12291), (92, 12300), (109, 12510), (111, 12540), (117, 12612), (124, 12711), (128, 12828), (133, 12894), (134, 12897), (145, 13017), (147, 13053), (151, 13152), (156, 13245), (157, 13251), (161, 13317), (164, 13347), (169, 13374), (175, 13458), (178, 13485), (185, 13596), (190, 13659), (195, 13701), (197, 13707), (202, 13752), (207, 13821), (217, 13890), (222, 13947), (225, 13971), (229, 13989), (230, 14007), (232, 14016), (238, 14085), (243, 14142), (249, 14229), (251, 14244), (253, 14301), (258, 14352), (260, 14388), (263, 14499), (266, 14541), (268, 14559), (269, 14598), (274, 14700), (275, 14706), (277, 14751), (278, 14763),

Gene: Eastland_18 Start: 13325, Stop: 16573, Start Num: 1

Candidate Starts for Eastland_18:

(Start: 1 @13325 has 9 MA's), (8, 13403), (13, 13577), (28, 13769), (29, 13787), (31, 13808), (40, 13916), (54, 14078), (57, 14105), (66, 14231), (68, 14279), (69, 14285), (73, 14393), (74, 14441), (76, 14456), (85, 14525), (87, 14546), (89, 14561), (91, 14582), (93, 14603), (102, 14726), (104, 14747), (107, 14771), (108, 14795), (109, 14801), (112, 14831), (117, 14900), (119, 14918), (121, 14951), (126, 15095), (128, 15143), (129, 15170), (136, 15224), (139, 15242), (144, 15311), (147, 15368), (151, 15470), (160, 15605), (173, 15728), (175, 15770), (176, 15773), (177, 15785), (182, 15830), (183, 15878), (184, 15884), (191, 15995), (194, 16022), (196, 16028), (200, 16064), (206, 16154), (212, 16190), (213, 16199), (221, 16295), (229, 16346), (235, 16418),

Gene: Eklok_18 Start: 13340, Stop: 16588, Start Num: 1

Candidate Starts for Eklok_18:

(Start: 1 @13340 has 9 MA's), (8, 13418), (13, 13592), (28, 13784), (29, 13802), (31, 13823), (40, 13931), (54, 14093), (57, 14120), (66, 14246), (68, 14294), (69, 14300), (73, 14408), (74, 14456), (76, 14471), (85, 14540), (87, 14561), (89, 14576), (91, 14597), (93, 14618), (102, 14741), (104, 14762), (107, 14786), (108, 14810), (109, 14816), (112, 14846), (117, 14915), (119, 14933), (121, 14966), (126, 15110), (128, 15158), (129, 15185), (136, 15239), (139, 15257), (144, 15326), (147, 15383), (151, 15485), (160, 15620), (173, 15743), (175, 15785), (176, 15788), (177, 15800), (182, 15845), (183, 15893), (184, 15899), (191, 16010), (194, 16037), (196, 16043), (200, 16079), (206, 16169), (212, 16205), (213, 16214), (221, 16310), (229, 16361), (235, 16433),

Gene: Gibson_24 Start: 14554, Stop: 18495, Start Num: 2

Candidate Starts for Gibson_24:

(Start: 2 @14554 has 8 MA's), (3, 14563), (6, 14602), (24, 14944), (26, 14971), (32, 15064), (36, 15091), (42, 15184), (60, 15418), (70, 15577), (73, 15655), (75, 15724), (84, 15814), (95, 15985), (97, 15991), (100, 16045), (105, 16093), (110, 16153), (114, 16225), (116, 16234), (125, 16372), (141,

16615), (153, 16852), (158, 16924), (159, 16933), (167, 17020), (174, 17071), (179, 17137), (181, 17167), (191, 17326), (201, 17395), (213, 17506), (214, 17509), (215, 17530), (219, 17566), (236, 17737), (237, 17746), (240, 17770), (242, 17785), (245, 17845), (254, 17971), (261, 18097), (262, 18145), (264, 18184), (266, 18205), (274, 18361), (284, 18490),

Gene: HFrancette_18 Start: 13339, Stop: 16602, Start Num: 1

Candidate Starts for HFrancette_18:

(Start: 1 @13339 has 9 MA's), (8, 13417), (13, 13591), (17, 13672), (23, 13735), (28, 13780), (29, 13798), (34, 13864), (41, 13951), (49, 14083), (50, 14086), (55, 14131), (56, 14134), (66, 14260), (68, 14308), (69, 14314), (73, 14422), (74, 14470), (76, 14485), (85, 14554), (87, 14575), (89, 14590), (91, 14611), (93, 14632), (102, 14755), (107, 14800), (108, 14824), (109, 14830), (112, 14860), (117, 14929), (119, 14947), (121, 14980), (126, 15124), (128, 15172), (129, 15199), (136, 15253), (139, 15271), (142, 15316), (144, 15340), (147, 15397), (151, 15499), (160, 15634), (173, 15757), (175, 15799), (176, 15802), (177, 15814), (182, 15859), (183, 15907), (184, 15913), (191, 16024), (194, 16051), (199, 16090), (200, 16093), (206, 16183), (213, 16228), (221, 16324), (228, 16372), (229, 16375), (233, 16423), (239, 16474),

Gene: Ignacio_18 Start: 13339, Stop: 16602, Start Num: 1

Candidate Starts for Ignacio_18:

(Start: 1 @13339 has 9 MA's), (8, 13417), (13, 13591), (17, 13672), (23, 13735), (28, 13780), (29, 13798), (34, 13864), (41, 13951), (49, 14083), (50, 14086), (55, 14131), (56, 14134), (66, 14260), (68, 14308), (69, 14314), (73, 14422), (74, 14470), (76, 14485), (85, 14554), (87, 14575), (89, 14590), (91, 14611), (93, 14632), (102, 14755), (107, 14800), (108, 14824), (109, 14830), (112, 14860), (117, 14929), (119, 14947), (121, 14980), (126, 15124), (128, 15172), (129, 15199), (136, 15253), (139, 15271), (142, 15316), (144, 15340), (147, 15397), (151, 15499), (160, 15634), (173, 15757), (175, 15799), (176, 15802), (177, 15814), (182, 15859), (183, 15907), (184, 15913), (191, 16024), (194, 16051), (199, 16090), (200, 16093), (206, 16183), (213, 16228), (221, 16324), (228, 16372), (229, 16375), (233, 16423), (239, 16474),

Gene: Lizz_24 Start: 14470, Stop: 18393, Start Num: 2

Candidate Starts for Lizz_24:

(Start: 2 @14470 has 8 MA's), (6, 14518), (9, 14605), (10, 14641), (28, 14902), (35, 15013), (36, 15016), (41, 15088), (47, 15199), (54, 15259), (57, 15286), (60, 15346), (63, 15391), (70, 15505), (71, 15538), (73, 15583), (83, 15727), (86, 15751), (91, 15796), (116, 16129), (117, 16138), (120, 16159), (147, 16600), (153, 16750), (158, 16822), (159, 16831), (163, 16879), (167, 16918), (176, 17011), (181, 17065), (185, 17143), (188, 17185), (201, 17293), (208, 17374), (214, 17407), (219, 17464), (236, 17635), (237, 17644), (240, 17668), (245, 17743), (251, 17809), (252, 17824), (256, 17881), (261, 17995), (264, 18082), (272, 18178), (274, 18259), (276, 18286), (277, 18307), (284, 18388),

Gene: PHTown_24 Start: 14470, Stop: 18393, Start Num: 2

Candidate Starts for PHTown_24:

(Start: 2 @14470 has 8 MA's), (6, 14518), (9, 14605), (10, 14641), (28, 14902), (35, 15013), (36, 15016), (41, 15088), (54, 15259), (57, 15286), (60, 15346), (63, 15391), (70, 15505), (71, 15538), (73, 15583), (83, 15727), (86, 15751), (91, 15796), (116, 16129), (117, 16138), (120, 16159), (127, 16339), (137, 16465), (141, 16513), (147, 16600), (153, 16750), (158, 16822), (159, 16831), (167, 16918), (191, 17224), (201, 17293), (214, 17407), (215, 17428), (219, 17464), (236, 17635), (237, 17644), (240, 17668), (245, 17743), (251, 17809), (252, 17824), (256, 17881), (261, 17995), (264, 18082), (274, 18259), (277, 18307), (284, 18388),

Gene: Piccadilly_18 Start: 13324, Stop: 16572, Start Num: 1

Candidate Starts for Piccadilly_18:

(Start: 1 @13324 has 9 MA's), (8, 13402), (13, 13576), (28, 13768), (29, 13786), (31, 13807), (40, 13915), (54, 14077), (57, 14104), (66, 14230), (68, 14278), (69, 14284), (73, 14392), (74, 14440), (76,

14455), (85, 14524), (87, 14545), (89, 14560), (91, 14581), (93, 14602), (102, 14725), (104, 14746), (107, 14770), (108, 14794), (109, 14800), (112, 14830), (117, 14899), (119, 14917), (121, 14950), (126, 15094), (128, 15142), (129, 15169), (136, 15223), (139, 15241), (144, 15310), (147, 15367), (151, 15469), (160, 15604), (173, 15727), (175, 15769), (176, 15772), (177, 15784), (182, 15829), (183, 15877), (184, 15883), (191, 15994), (194, 16021), (196, 16027), (200, 16063), (206, 16153), (212, 16189), (213, 16198), (221, 16294), (229, 16345), (235, 16417),

Gene: Rooney_24 Start: 14551, Stop: 18492, Start Num: 2

Candidate Starts for Rooney_24:

(Start: 2 @14551 has 8 MA's), (3, 14560), (6, 14599), (24, 14941), (26, 14968), (32, 15061), (36, 15088), (42, 15181), (60, 15415), (70, 15574), (73, 15652), (75, 15721), (84, 15811), (95, 15982), (97, 15988), (100, 16042), (105, 16090), (110, 16150), (114, 16222), (116, 16231), (125, 16369), (141, 16612), (153, 16849), (158, 16921), (159, 16930), (167, 17017), (174, 17068), (179, 17134), (181, 17164), (191, 17323), (201, 17392), (213, 17503), (214, 17506), (215, 17527), (219, 17563), (236, 17734), (237, 17743), (240, 17767), (242, 17782), (245, 17842), (254, 17968), (261, 18094), (262, 18142), (264, 18181), (266, 18202), (274, 18358), (284, 18487),

Gene: ShakeNBake_24 Start: 14470, Stop: 18393, Start Num: 2

Candidate Starts for ShakeNBake_24:

(Start: 2 @14470 has 8 MA's), (6, 14518), (9, 14605), (10, 14641), (28, 14902), (35, 15013), (36, 15016), (41, 15088), (54, 15259), (57, 15286), (67, 15466), (70, 15505), (73, 15583), (83, 15727), (86, 15751), (91, 15796), (116, 16129), (117, 16138), (120, 16159), (127, 16339), (137, 16465), (141, 16513), (147, 16600), (153, 16750), (158, 16822), (159, 16831), (163, 16879), (167, 16918), (185, 17143), (191, 17224), (192, 17236), (198, 17275), (201, 17293), (213, 17404), (214, 17407), (215, 17428), (219, 17464), (236, 17635), (237, 17644), (240, 17668), (245, 17743), (251, 17809), (252, 17824), (256, 17881), (261, 17995), (264, 18082), (274, 18259), (277, 18307), (284, 18388),

Gene: Vondra_18 Start: 13338, Stop: 16601, Start Num: 1

Candidate Starts for Vondra_18:

(Start: 1 @13338 has 9 MA's), (8, 13416), (13, 13590), (17, 13671), (23, 13734), (28, 13779), (29, 13797), (34, 13863), (41, 13950), (49, 14082), (50, 14085), (55, 14130), (56, 14133), (66, 14259), (68, 14307), (69, 14313), (73, 14421), (74, 14469), (76, 14484), (85, 14553), (87, 14574), (89, 14589), (91, 14610), (93, 14631), (102, 14754), (107, 14799), (108, 14823), (109, 14829), (112, 14859), (117, 14928), (119, 14946), (121, 14979), (126, 15123), (128, 15171), (129, 15198), (136, 15252), (138, 15267), (142, 15315), (144, 15339), (146, 15390), (147, 15396), (150, 15483), (151, 15498), (157, 15597), (160, 15633), (162, 15660), (163, 15669), (168, 15711), (175, 15798), (176, 15801), (177, 15813), (182, 15858), (183, 15906), (184, 15912), (191, 16023), (194, 16050), (199, 16089), (200, 16092), (206, 16182), (213, 16227), (221, 16323), (228, 16371), (229, 16374), (233, 16422), (239, 16473),

Gene: Wentworth_24 Start: 14248, Stop: 18210, Start Num: 2

Candidate Starts for Wentworth_24:

(Start: 2 @14248 has 8 MA's), (3, 14257), (6, 14296), (9, 14383), (10, 14419), (36, 14782), (37, 14791), (38, 14803), (41, 14854), (53, 15016), (54, 15022), (70, 15271), (72, 15307), (73, 15349), (75, 15412), (77, 15436), (81, 15478), (99, 15697), (110, 15844), (126, 16153), (130, 16225), (131, 16228), (132, 16252), (142, 16336), (152, 16531), (153, 16567), (155, 16597), (158, 16639), (159, 16648), (165, 16729), (168, 16738), (171, 16759), (180, 16864), (188, 17002), (189, 17008), (193, 17059), (201, 17110), (204, 17140), (210, 17200), (213, 17221), (214, 17224), (215, 17245), (219, 17281), (224, 17341), (226, 17362), (236, 17452), (237, 17461), (251, 17626), (254, 17686), (255, 17692), (256, 17698), (261, 17812), (264, 17899), (270, 17980), (279, 18160), (280, 18178), (281, 18187), (284, 18205),

Gene: Wilkos_24 Start: 14417, Stop: 18340, Start Num: 2

Candidate Starts for Wilkos_24:

(Start: 2 @14417 has 8 MA's), (3, 14426), (6, 14465), (9, 14552), (10, 14588), (11, 14612), (36, 14951), (37, 14960), (42, 15044), (53, 15185), (54, 15191), (57, 15218), (66, 15359), (70, 15440), (73, 15518), (91, 15731), (103, 15926), (116, 16076), (118, 16094), (122, 16148), (141, 16460), (153, 16697), (157, 16748), (158, 16769), (159, 16778), (167, 16865), (176, 16958), (179, 16982), (187, 17129), (188, 17132), (198, 17222), (201, 17240), (210, 17330), (213, 17351), (214, 17354), (215, 17375), (219, 17411), (224, 17471), (237, 17591), (240, 17615), (242, 17630), (251, 17756), (255, 17822), (256, 17828), (261, 17942), (264, 18029), (266, 18050), (274, 18206), (279, 18290), (284, 18335),

Gene: Yara_22 Start: 13893, Stop: 18437, Start Num: 2

Candidate Starts for Yara_22:

(Start: 2 @13893 has 8 MA's), (4, 13911), (5, 13914), (6, 13941), (8, 13965), (12, 14127), (13, 14139), (16, 14223), (19, 14253), (20, 14271), (30, 14376), (50, 14688), (51, 14691), (54, 14718), (57, 14745), (58, 14748), (68, 14922), (75, 15096), (79, 15138), (101, 15423), (113, 15582), (123, 15669), (128, 15849), (135, 15921), (140, 15966), (143, 16014), (146, 16068), (147, 16074), (149, 16125), (154, 16233), (159, 16302), (186, 16629), (188, 16644), (216, 16905), (218, 16923), (231, 17031), (234, 17073), (242, 17136), (246, 17205), (250, 17256), (254, 17325), (257, 17352), (259, 17397), (267, 17571), (271, 17625), (273, 17634), (282, 17826), (285, 17904), (286, 17916), (287, 17937), (288, 18036), (289, 18057), (290, 18174), (291, 18189), (292, 18219), (293, 18291), (294, 18300), (295, 18375),

Gene: phiSASD1_38 Start: 11644, Stop: 14799, Start Num: 1

Candidate Starts for phiSASD1_38:

(Start: 1 @11644 has 9 MA's), (7, 11698), (21, 12004), (24, 12040), (27, 12076), (28, 12079), (38, 12208), (39, 12232), (44, 12316), (49, 12391), (52, 12403), (57, 12445), (62, 12523), (65, 12562), (73, 12730), (76, 12793), (78, 12802), (88, 12895), (98, 13027), (104, 13093), (115, 13228), (124, 13339), (137, 13546), (161, 13945), (166, 13990), (170, 14005), (172, 14029), (190, 14266), (203, 14356), (209, 14410), (212, 14419), (214, 14431), (220, 14500), (222, 14530), (238, 14665), (239, 14671), (241, 14686), (244, 14725), (247, 14770), (248, 14794),