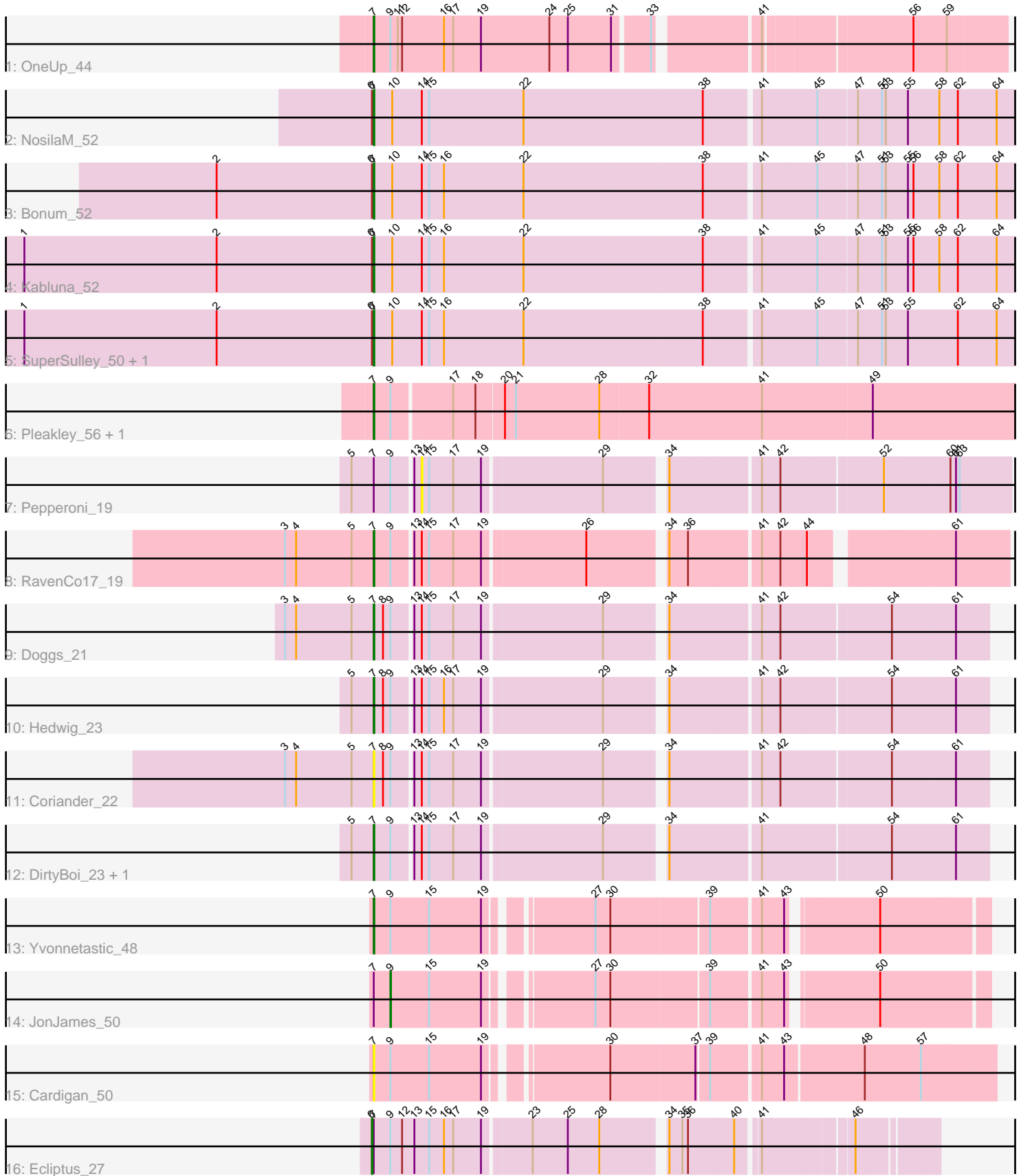


Pham 195800



Note: Tracks are now grouped by subcluster and scaled. Switching in subcluster is indicated by changes in track color. Track scale is now set by default to display the region 30 bp upstream of start 1 to 30 bp downstream of the last possible start. If this default region is judged to be packed too tightly with annotated starts, the track will be further scaled to only show that region of the ORF with annotated starts. This action will be indicated by adding "Zoomed" to the title. For starts, yellow indicates the location of called starts comprised solely of Glimmer/GeneMark auto-annotations, green indicates the location of called starts with at least 1 manual gene annotation.

Pham 195800 Report

This analysis was run 12/09/24 on database version 580.

Pham number 195800 has 19 members, 3 are drafts.

Phages represented in each track:

- Track 1 : OneUp_44
- Track 2 : NosilaM_52
- Track 3 : Bonum_52
- Track 4 : Kabluna_52
- Track 5 : SuperSulley_50, Buggaboo_50
- Track 6 : Pleakley_56, Fury_56
- Track 7 : Pepperoni_19
- Track 8 : RavenCo17_19
- Track 9 : Doggs_21
- Track 10 : Hedwig_23
- Track 11 : Coriander_22
- Track 12 : DirtyBoi_23, RayTheFireFly_22
- Track 13 : Yvonnetastic_48
- Track 14 : JonJames_50
- Track 15 : Cardigan_50
- Track 16 : Ecliptus_27

Summary of Final Annotations (See graph section above for start numbers):

The start number called the most often in the published annotations is 7, it was called in 14 of the 16 non-draft genes in the pham.

Genes that call this "Most Annotated" start:

- Bonum_52, Buggaboo_50, Cardigan_50, Coriander_22, DirtyBoi_23, Doggs_21, Fury_56, Hedwig_23, Kabluna_52, NosilaM_52, OneUp_44, Pleakley_56, RavenCo17_19, RayTheFireFly_22, SuperSulley_50, Yvonnetastic_48,

Genes that have the "Most Annotated" start but do not call it:

- Ecliptus_27, JonJames_50, Pepperoni_19,

Genes that do not have the "Most Annotated" start:

-

Summary by start number:

Start 6:

- Found in 6 of 19 (31.6%) of genes in pham
- Manual Annotations of this start: 1 of 16
- Called 16.7% of time when present
- Phage (with cluster) where this start called: Ecliptus_27 (DN),

Start 7:

- Found in 19 of 19 (100.0%) of genes in pham
- Manual Annotations of this start: 14 of 16
- Called 84.2% of time when present
- Phage (with cluster) where this start called: Bonum_52 (CR2), Buggaboo_50 (CR2), Cardigan_50 (DD), Coriander_22 (DB), DirtyBoi_23 (DB), Doggs_21 (DB), Fury_56 (CR5), Hedwig_23 (DB), Kabluna_52 (CR2), NosilaM_52 (CR2), OneUp_44 (CQ2), Pleakley_56 (CR5), RavenCo17_19 (CZ8), RayTheFireFly_22 (DB), SuperSulley_50 (CR2), Yvonnetastic_48 (DD),

Start 9:

- Found in 14 of 19 (73.7%) of genes in pham
- Manual Annotations of this start: 1 of 16
- Called 7.1% of time when present
- Phage (with cluster) where this start called: JonJames_50 (DD),

Start 14:

- Found in 12 of 19 (63.2%) of genes in pham
- No Manual Annotations of this start.
- Called 8.3% of time when present
- Phage (with cluster) where this start called: Pepperoni_19 (CZ),

Summary by clusters:

There are 8 clusters represented in this pham: DN, CR2, CZ8, CR5, DD, DB, CZ, CQ2,

Info for manual annotations of cluster CQ2:

- Start number 7 was manually annotated 1 time for cluster CQ2.

Info for manual annotations of cluster CR2:

- Start number 7 was manually annotated 5 times for cluster CR2.

Info for manual annotations of cluster CR5:

- Start number 7 was manually annotated 2 times for cluster CR5.

Info for manual annotations of cluster CZ8:

- Start number 7 was manually annotated 1 time for cluster CZ8.

Info for manual annotations of cluster DB:

- Start number 7 was manually annotated 4 times for cluster DB.

Info for manual annotations of cluster DD:

- Start number 7 was manually annotated 1 time for cluster DD.
- Start number 9 was manually annotated 1 time for cluster DD.

Info for manual annotations of cluster DN:

•Start number 6 was manually annotated 1 time for cluster DN.

Gene Information:

Gene: Bonum_52 Start: 38006, Stop: 39028, Start Num: 7

Candidate Starts for Bonum_52:

(2, 37751), (Start: 6 @38003 has 1 MA's), (Start: 7 @38006 has 14 MA's), (10, 38036), (14, 38084), (15, 38096), (16, 38120), (22, 38249), (38, 38534), (41, 38618), (45, 38705), (47, 38765), (51, 38804), (53, 38810), (55, 38846), (56, 38855), (58, 38897), (62, 38927), (64, 38990),

Gene: Buggaboo_50 Start: 38485, Stop: 39507, Start Num: 7

Candidate Starts for Buggaboo_50:

(1, 37918), (2, 38230), (Start: 6 @38482 has 1 MA's), (Start: 7 @38485 has 14 MA's), (10, 38515), (14, 38563), (15, 38575), (16, 38599), (22, 38728), (38, 39013), (41, 39097), (45, 39184), (47, 39244), (51, 39283), (53, 39289), (55, 39325), (62, 39406), (64, 39469),

Gene: Cardigan_50 Start: 35257, Stop: 36186, Start Num: 7

Candidate Starts for Cardigan_50:

(Start: 7 @35257 has 14 MA's), (Start: 9 @35284 has 1 MA's), (15, 35347), (19, 35431), (30, 35602), (37, 35734), (39, 35752), (41, 35824), (43, 35860), (48, 35980), (57, 36070),

Gene: Coriander_22 Start: 20422, Stop: 21342, Start Num: 7

Candidate Starts for Coriander_22:

(3, 20278), (4, 20296), (5, 20386), (Start: 7 @20422 has 14 MA's), (8, 20437), (Start: 9 @20449 has 1 MA's), (13, 20479), (14, 20491), (15, 20503), (17, 20542), (19, 20587), (29, 20773), (34, 20860), (41, 20995), (42, 21025), (54, 21190), (61, 21289),

Gene: DirtyBoi_23 Start: 19883, Stop: 20803, Start Num: 7

Candidate Starts for DirtyBoi_23:

(5, 19847), (Start: 7 @19883 has 14 MA's), (Start: 9 @19910 has 1 MA's), (13, 19940), (14, 19952), (15, 19964), (17, 20003), (19, 20048), (29, 20234), (34, 20321), (41, 20456), (54, 20651), (61, 20750),

Gene: Doggs_21 Start: 20121, Stop: 21041, Start Num: 7

Candidate Starts for Doggs_21:

(3, 19977), (4, 19995), (5, 20085), (Start: 7 @20121 has 14 MA's), (8, 20136), (Start: 9 @20148 has 1 MA's), (13, 20178), (14, 20190), (15, 20202), (17, 20241), (19, 20286), (29, 20472), (34, 20559), (41, 20694), (42, 20724), (54, 20889), (61, 20988),

Gene: Ecliptus_27 Start: 21245, Stop: 22066, Start Num: 6

Candidate Starts for Ecliptus_27:

(Start: 6 @21245 has 1 MA's), (Start: 7 @21248 has 14 MA's), (Start: 9 @21275 has 1 MA's), (12, 21293), (13, 21311), (15, 21335), (16, 21359), (17, 21374), (19, 21419), (23, 21491), (25, 21548), (28, 21599), (34, 21689), (35, 21707), (36, 21716), (40, 21788), (41, 21818), (46, 21947),

Gene: Fury_56 Start: 37521, Stop: 38534, Start Num: 7

Candidate Starts for Fury_56:

(Start: 7 @37521 has 14 MA's), (Start: 9 @37548 has 1 MA's), (17, 37638), (18, 37674), (20, 37716), (21, 37734), (28, 37869), (32, 37947), (41, 38127), (49, 38304),

Gene: Hedwig_23 Start: 19879, Stop: 20799, Start Num: 7

Candidate Starts for Hedwig_23:

(5, 19843), (Start: 7 @19879 has 14 MA's), (8, 19894), (Start: 9 @19906 has 1 MA's), (13, 19936), (14, 19948), (15, 19960), (16, 19984), (17, 19999), (19, 20044), (29, 20230), (34, 20317), (41, 20452), (42, 20482), (54, 20647), (61, 20746),

Gene: JonJames_50 Start: 36217, Stop: 37089, Start Num: 9

Candidate Starts for JonJames_50:

(Start: 7 @36190 has 14 MA's), (Start: 9 @36217 has 1 MA's), (15, 36280), (19, 36364), (27, 36511), (30, 36535), (39, 36685), (41, 36760), (43, 36796), (50, 36922),

Gene: Kabluna_52 Start: 37421, Stop: 38443, Start Num: 7

Candidate Starts for Kabluna_52:

(1, 36854), (2, 37166), (Start: 6 @37418 has 1 MA's), (Start: 7 @37421 has 14 MA's), (10, 37451), (14, 37499), (15, 37511), (16, 37535), (22, 37664), (38, 37949), (41, 38033), (45, 38120), (47, 38180), (51, 38219), (53, 38225), (55, 38261), (56, 38270), (58, 38312), (62, 38342), (64, 38405),

Gene: NosilaM_52 Start: 38318, Stop: 39340, Start Num: 7

Candidate Starts for NosilaM_52:

(Start: 6 @38315 has 1 MA's), (Start: 7 @38318 has 14 MA's), (10, 38348), (14, 38396), (15, 38408), (22, 38561), (38, 38846), (41, 38930), (45, 39017), (47, 39077), (51, 39116), (53, 39122), (55, 39158), (58, 39209), (62, 39239), (64, 39302),

Gene: OneUp_44 Start: 29381, Stop: 30328, Start Num: 7

Candidate Starts for OneUp_44:

(Start: 7 @29381 has 14 MA's), (Start: 9 @29408 has 1 MA's), (11, 29420), (12, 29426), (16, 29492), (17, 29507), (19, 29552), (24, 29663), (25, 29693), (31, 29762), (33, 29813), (41, 29957), (56, 30179), (59, 30233),

Gene: Pepperoni_19 Start: 17529, Stop: 18416, Start Num: 14

Candidate Starts for Pepperoni_19:

(5, 17424), (Start: 7 @17460 has 14 MA's), (Start: 9 @17487 has 1 MA's), (13, 17517), (14, 17529), (15, 17541), (17, 17580), (19, 17625), (29, 17811), (34, 17898), (41, 18033), (42, 18063), (52, 18216), (60, 18318), (61, 18327), (63, 18333),

Gene: Pleakley_56 Start: 37522, Stop: 38535, Start Num: 7

Candidate Starts for Pleakley_56:

(Start: 7 @37522 has 14 MA's), (Start: 9 @37549 has 1 MA's), (17, 37639), (18, 37675), (20, 37717), (21, 37735), (28, 37870), (32, 37948), (41, 38128), (49, 38305),

Gene: RavenCo17_19 Start: 17994, Stop: 18929, Start Num: 7

Candidate Starts for RavenCo17_19:

(3, 17850), (4, 17868), (5, 17958), (Start: 7 @17994 has 14 MA's), (Start: 9 @18021 has 1 MA's), (13, 18051), (14, 18063), (15, 18075), (17, 18114), (19, 18159), (26, 18318), (34, 18432), (36, 18459), (41, 18567), (42, 18597), (44, 18639), (61, 18843),

Gene: RayTheFireFly_22 Start: 20454, Stop: 21374, Start Num: 7

Candidate Starts for RayTheFireFly_22:

(5, 20418), (Start: 7 @20454 has 14 MA's), (Start: 9 @20481 has 1 MA's), (13, 20511), (14, 20523), (15, 20535), (17, 20574), (19, 20619), (29, 20805), (34, 20892), (41, 21027), (54, 21222), (61, 21321),

Gene: SuperSulley_50 Start: 38485, Stop: 39507, Start Num: 7

Candidate Starts for SuperSulley_50:

(1, 37918), (2, 38230), (Start: 6 @38482 has 1 MA's), (Start: 7 @38485 has 14 MA's), (10, 38515), (14, 38563), (15, 38575), (16, 38599), (22, 38728), (38, 39013), (41, 39097), (45, 39184), (47, 39244), (51, 39283), (53, 39289), (55, 39325), (62, 39406), (64, 39469),

Gene: Yvonnetastic_48 Start: 33725, Stop: 34624, Start Num: 7

Candidate Starts for Yvonnetastic_48:

(Start: 7 @33725 has 14 MA's), (Start: 9 @33752 has 1 MA's), (15, 33815), (19, 33899), (27, 34046), (30, 34070), (39, 34220), (41, 34295), (43, 34331), (50, 34457),