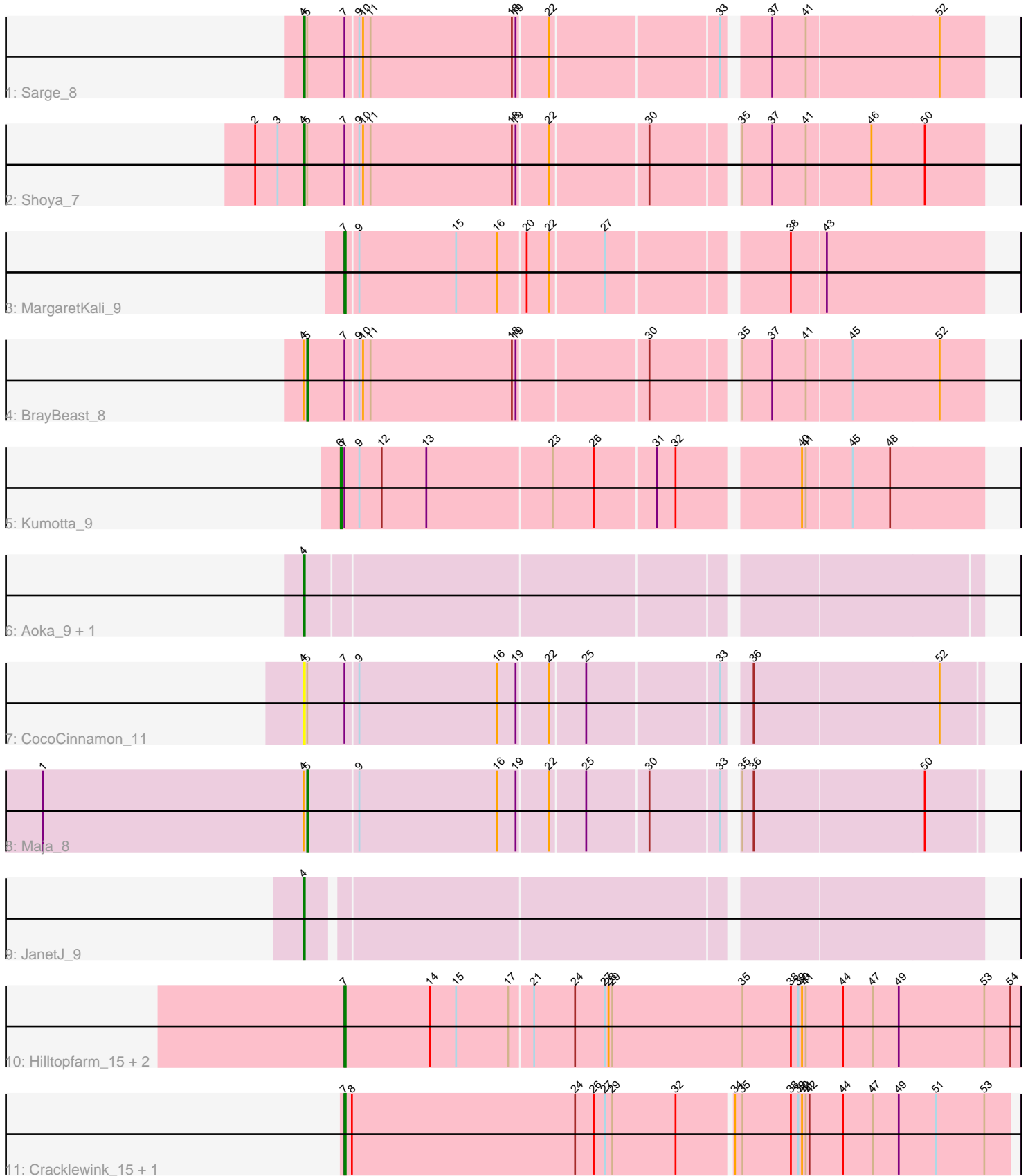


Pham 195835



Note: Tracks are now grouped by subcluster and scaled. Switching in subcluster is indicated by changes in track color. Track scale is now set by default to display the region 30 bp upstream of start 1 to 30 bp downstream of the last possible start. If this default region is judged to be packed too tightly with annotated starts, the track will be further scaled to only show that region of the ORF with annotated starts. This action will be indicated by adding "Zoomed" to the title. For starts, yellow indicates the location of called starts comprised solely of Glimmer/GeneMark auto-annotations, green indicates the location of called starts with at least 1 manual gene annotation.

Pham 195835 Report

This analysis was run 12/09/24 on database version 580.

Pham number 195835 has 15 members, 3 are drafts.

Phages represented in each track:

- Track 1 : Sarge_8
- Track 2 : Shoya_7
- Track 3 : MargaretKali_9
- Track 4 : BrayBeast_8
- Track 5 : Kumotta_9
- Track 6 : Aoka_9, EvenBluerMoon_10
- Track 7 : CocoCinnamon_11
- Track 8 : Maja_8
- Track 9 : JanetJ_9
- Track 10 : Hilltopfarm_15, Typha_15, AuntGwenStacy_15
- Track 11 : Cracklewink_15, Bipper_15

Summary of Final Annotations (See graph section above for start numbers):

The start number called the most often in the published annotations is 7, it was called in 5 of the 12 non-draft genes in the pham.

Genes that call this "Most Annotated" start:

- AuntGwenStacy_15, Bipper_15, Cracklewink_15, Hilltopfarm_15, MargaretKali_9, Typha_15,

Genes that have the "Most Annotated" start but do not call it:

- BrayBeast_8, CocoCinnamon_11, Kumotta_9, Sarge_8, Shoya_7,

Genes that do not have the "Most Annotated" start:

- Aoka_9, EvenBluerMoon_10, JanetJ_9, Maja_8,

Summary by start number:

Start 4:

- Found in 8 of 15 (53.3%) of genes in pham
- Manual Annotations of this start: 4 of 12
- Called 75.0% of time when present

- Phage (with cluster) where this start called: Aoka_9 (FO), CocoCinnamon_11 (FO), EvenBluerMoon_10 (FO), JanetJ_9 (FO), Sarge_8 (FB), Shoya_7 (FB),

Start 5:

- Found in 5 of 15 (33.3%) of genes in pham
- Manual Annotations of this start: 2 of 12
- Called 40.0% of time when present
- Phage (with cluster) where this start called: BrayBeast_8 (FB), Maja_8 (FO),

Start 6:

- Found in 1 of 15 (6.7%) of genes in pham
- Manual Annotations of this start: 1 of 12
- Called 100.0% of time when present
- Phage (with cluster) where this start called: Kumotta_9 (FB),

Start 7:

- Found in 11 of 15 (73.3%) of genes in pham
- Manual Annotations of this start: 5 of 12
- Called 54.5% of time when present
- Phage (with cluster) where this start called: AuntGwenStacy_15 (Y), Bipper_15 (Y), Cracklewink_15 (Y), Hilltopfarm_15 (Y), MargaretKali_9 (FB), Typha_15 (Y),

Summary by clusters:

There are 3 clusters represented in this pham: Y, FB, FO,

Info for manual annotations of cluster FB:

- Start number 4 was manually annotated 2 times for cluster FB.
- Start number 5 was manually annotated 1 time for cluster FB.
- Start number 6 was manually annotated 1 time for cluster FB.
- Start number 7 was manually annotated 1 time for cluster FB.

Info for manual annotations of cluster FO:

- Start number 4 was manually annotated 2 times for cluster FO.
- Start number 5 was manually annotated 1 time for cluster FO.

Info for manual annotations of cluster Y:

- Start number 7 was manually annotated 4 times for cluster Y.

Gene Information:

Gene: Aoka_9 Start: 7589, Stop: 8104, Start Num: 4

Candidate Starts for Aoka_9:

(Start: 4 @7589 has 4 MA's),

Gene: AuntGwenStacy_15 Start: 10833, Stop: 11375, Start Num: 7

Candidate Starts for AuntGwenStacy_15:

(Start: 7 @10833 has 5 MA's), (14, 10902), (15, 10923), (17, 10965), (21, 10983), (24, 11016), (27, 11040), (28, 11043), (29, 11046), (35, 11151), (38, 11190), (39, 11196), (40, 11199), (41, 11202), (44, 11232), (47, 11256), (49, 11277), (53, 11346), (54, 11367),

Gene: Bipper_15 Start: 10931, Stop: 11461, Start Num: 7

Candidate Starts for Bipper_15:

(Start: 7 @10931 has 5 MA's), (8, 10937), (24, 11117), (26, 11132), (27, 11141), (29, 11147), (32, 11198), (34, 11240), (35, 11246), (38, 11285), (39, 11291), (40, 11294), (41, 11297), (42, 11300), (44, 11327), (47, 11351), (49, 11372), (51, 11402), (53, 11441),

Gene: BrayBeast_8 Start: 6486, Stop: 7001, Start Num: 5

Candidate Starts for BrayBeast_8:

(Start: 4 @6483 has 4 MA's), (Start: 5 @6486 has 2 MA's), (Start: 7 @6516 has 5 MA's), (9, 6525), (10, 6528), (11, 6534), (18, 6648), (19, 6651), (30, 6750), (35, 6810), (37, 6834), (41, 6861), (45, 6897), (52, 6966),

Gene: CocoCinnamon_11 Start: 7690, Stop: 8205, Start Num: 4

Candidate Starts for CocoCinnamon_11:

(Start: 4 @7690 has 4 MA's), (Start: 5 @7693 has 2 MA's), (Start: 7 @7723 has 5 MA's), (9, 7732), (16, 7843), (19, 7858), (22, 7882), (25, 7909), (33, 8011), (36, 8026), (52, 8173),

Gene: Cracklewink_15 Start: 10931, Stop: 11461, Start Num: 7

Candidate Starts for Cracklewink_15:

(Start: 7 @10931 has 5 MA's), (8, 10937), (24, 11117), (26, 11132), (27, 11141), (29, 11147), (32, 11198), (34, 11240), (35, 11246), (38, 11285), (39, 11291), (40, 11294), (41, 11297), (42, 11300), (44, 11327), (47, 11351), (49, 11372), (51, 11402), (53, 11441),

Gene: EvenBluerMoon_10 Start: 7623, Stop: 8138, Start Num: 4

Candidate Starts for EvenBluerMoon_10:

(Start: 4 @7623 has 4 MA's),

Gene: Hilltopfarm_15 Start: 10863, Stop: 11405, Start Num: 7

Candidate Starts for Hilltopfarm_15:

(Start: 7 @10863 has 5 MA's), (14, 10932), (15, 10953), (17, 10995), (21, 11013), (24, 11046), (27, 11070), (28, 11073), (29, 11076), (35, 11181), (38, 11220), (39, 11226), (40, 11229), (41, 11232), (44, 11262), (47, 11286), (49, 11307), (53, 11376), (54, 11397),

Gene: JanetJ_9 Start: 7405, Stop: 7920, Start Num: 4

Candidate Starts for JanetJ_9:

(Start: 4 @7405 has 4 MA's),

Gene: Kumotta_9 Start: 7342, Stop: 7839, Start Num: 6

Candidate Starts for Kumotta_9:

(Start: 6 @7342 has 1 MA's), (Start: 7 @7345 has 5 MA's), (9, 7357), (12, 7375), (13, 7411), (23, 7510), (26, 7543), (31, 7591), (32, 7606), (40, 7696), (41, 7699), (45, 7735), (48, 7765),

Gene: Maja_8 Start: 6915, Stop: 7427, Start Num: 5

Candidate Starts for Maja_8:

(1, 6702), (Start: 4 @6912 has 4 MA's), (Start: 5 @6915 has 2 MA's), (9, 6954), (16, 7065), (19, 7080), (22, 7104), (25, 7131), (30, 7179), (33, 7233), (35, 7239), (36, 7248), (50, 7383),

Gene: MargaretKali_9 Start: 6988, Stop: 7473, Start Num: 7

Candidate Starts for MargaretKali_9:

(Start: 7 @6988 has 5 MA's), (9, 6997), (15, 7075), (16, 7108), (20, 7129), (22, 7147), (27, 7189), (38, 7321), (43, 7348),

Gene: Sarge_8 Start: 6394, Stop: 6912, Start Num: 4

Candidate Starts for Sarge_8:

(Start: 4 @6394 has 4 MA's), (Start: 5 @6397 has 2 MA's), (Start: 7 @6427 has 5 MA's), (9, 6436), (10, 6439), (11, 6445), (18, 6559), (19, 6562), (22, 6586), (33, 6715), (37, 6745), (41, 6772), (52, 6877),

Gene: Shoya_7 Start: 6030, Stop: 6548, Start Num: 4

Candidate Starts for Shoya_7:

(2, 5991), (3, 6009), (Start: 4 @6030 has 4 MA's), (Start: 5 @6033 has 2 MA's), (Start: 7 @6063 has 5 MA's), (9, 6072), (10, 6075), (11, 6081), (18, 6195), (19, 6198), (22, 6222), (30, 6297), (35, 6357), (37, 6381), (41, 6408), (46, 6459), (50, 6501),

Gene: Typha_15 Start: 10833, Stop: 11375, Start Num: 7

Candidate Starts for Typha_15:

(Start: 7 @10833 has 5 MA's), (14, 10902), (15, 10923), (17, 10965), (21, 10983), (24, 11016), (27, 11040), (28, 11043), (29, 11046), (35, 11151), (38, 11190), (39, 11196), (40, 11199), (41, 11202), (44, 11232), (47, 11256), (49, 11277), (53, 11346), (54, 11367),