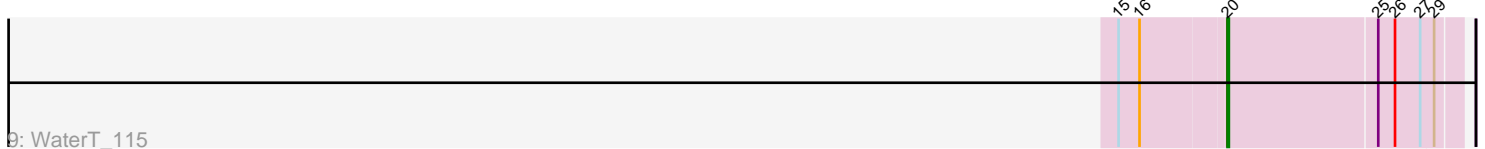
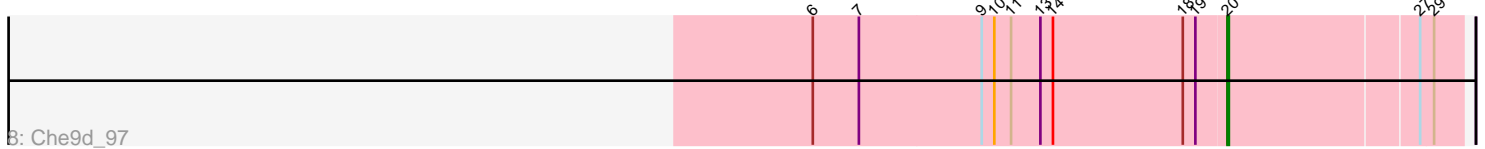
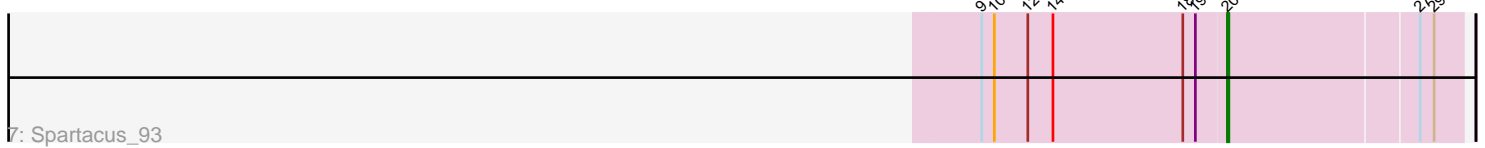
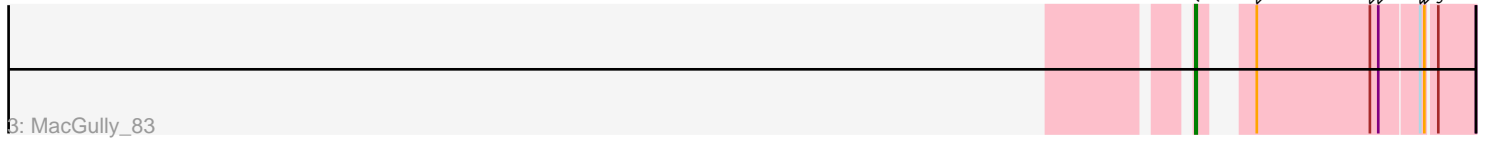
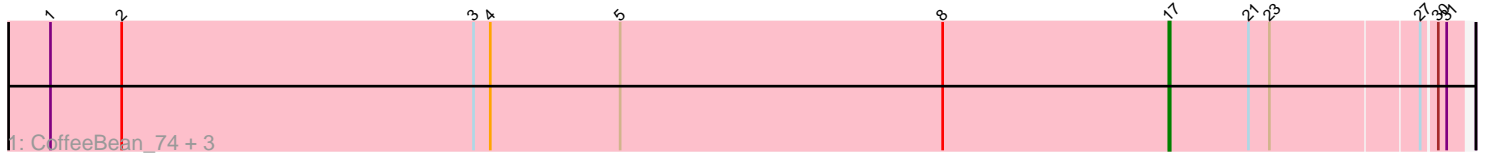


Pham 195846



Note: Tracks are now grouped by subcluster and scaled. Switching in subcluster is indicated by changes in track color. Track scale is now set by default to display the region 30 bp upstream of start 1 to 30 bp downstream of the last possible start. If this default region is judged to be packed too tightly with annotated starts, the track will be further scaled to only show that region of the ORF with annotated starts. This action will be indicated by adding "Zoomed" to the title. For starts, yellow indicates the location of called starts comprised solely of Glimmer/GeneMark auto-annotations, green indicates the location of called starts with at least 1 manual gene annotation.

Pham 195846 Report

This analysis was run 12/09/24 on database version 580.

Pham number 195846 has 13 members, 1 are drafts.

Phages represented in each track:

- Track 1 : CoffeeBean_74, Braxoaddie_74, Polyuyuki_74, Maselop_74
- Track 2 : GuyFagieri_72
- Track 3 : MacGully_83
- Track 4 : Apiary_74
- Track 5 : Galactic_87
- Track 6 : Hegedechwinu_87
- Track 7 : Spartacus_93
- Track 8 : Che9d_97
- Track 9 : WaterT_115
- Track 10 : Yappy_117

Summary of Final Annotations (See graph section above for start numbers):

The start number called the most often in the published annotations is 17, it was called in 5 of the 12 non-draft genes in the pham.

Genes that call this "Most Annotated" start:

- Apiary_74, Braxoaddie_74, CoffeeBean_74, Maselop_74, Polyuyuki_74,

Genes that have the "Most Annotated" start but do not call it:

-

Genes that do not have the "Most Annotated" start:

- Che9d_97, Galactic_87, GuyFagieri_72, Hegedechwinu_87, MacGully_83, Spartacus_93, WaterT_115, Yappy_117,

Summary by start number:

Start 17:

- Found in 5 of 13 (38.5%) of genes in pham
- Manual Annotations of this start: 5 of 12
- Called 100.0% of time when present
- Phage (with cluster) where this start called: Apiary_74 (CR), Braxoaddie_74 (CR), CoffeeBean_74 (CR), Maselop_74 (CR), Polyuyuki_74 (CR),

Start 19:

- Found in 6 of 13 (46.2%) of genes in pham
- Manual Annotations of this start: 2 of 12
- Called 33.3% of time when present
- Phage (with cluster) where this start called: GuyFagieri_72 (CR), MacGully_83 (CR),

Start 20:

- Found in 6 of 13 (46.2%) of genes in pham
- Manual Annotations of this start: 5 of 12
- Called 100.0% of time when present
- Phage (with cluster) where this start called: Che9d_97 (F2), Galactic_87 (F1), Hegedechwinu_87 (F1), Spartacus_93 (F1), WaterT_115 (GB), Yappy_117 (singleton),

Summary by clusters:

There are 5 clusters represented in this pham: F2, F1, singleton, GB, CR,

Info for manual annotations of cluster CR:

- Start number 17 was manually annotated 5 times for cluster CR.
- Start number 19 was manually annotated 2 times for cluster CR.

Info for manual annotations of cluster F1:

- Start number 20 was manually annotated 3 times for cluster F1.

Info for manual annotations of cluster F2:

- Start number 20 was manually annotated 1 time for cluster F2.

Info for manual annotations of cluster GB:

- Start number 20 was manually annotated 1 time for cluster GB.

Gene Information:

Gene: Apiary_74 Start: 53618, Stop: 53418, Start Num: 17

Candidate Starts for Apiary_74:

(8, 53780), (Start: 17 @53618 has 5 MA's), (21, 53561), (23, 53546), (27, 53444), (30, 53435), (31, 53429),

Gene: Braxoaddie_74 Start: 53604, Stop: 53404, Start Num: 17

Candidate Starts for Braxoaddie_74:

(1, 54405), (2, 54354), (3, 54102), (4, 54090), (5, 53997), (8, 53766), (Start: 17 @53604 has 5 MA's), (21, 53547), (23, 53532), (27, 53430), (30, 53421), (31, 53415),

Gene: Che9d_97 Start: 50270, Stop: 50431, Start Num: 20

Candidate Starts for Che9d_97:

(6, 49976), (7, 50009), (9, 50096), (10, 50105), (11, 50117), (13, 50138), (14, 50147), (18, 50240), (Start: 19 @50249 has 2 MA's), (Start: 20 @50270 has 5 MA's), (27, 50402), (29, 50411),

Gene: CoffeeBean_74 Start: 53562, Stop: 53362, Start Num: 17

Candidate Starts for CoffeeBean_74:

(1, 54363), (2, 54312), (3, 54060), (4, 54048), (5, 53955), (8, 53724), (Start: 17 @53562 has 5 MA's), (21, 53505), (23, 53490), (27, 53388), (30, 53379), (31, 53373),

Gene: Galactic_87 Start: 50180, Stop: 50341, Start Num: 20

Candidate Starts for Galactic_87:

(9, 50006), (10, 50015), (12, 50039), (18, 50150), (Start: 19 @50159 has 2 MA's), (Start: 20 @50180 has 5 MA's), (27, 50312), (29, 50321),

Gene: GuyFagieri_72 Start: 53418, Stop: 53260, Start Num: 19

Candidate Starts for GuyFagieri_72:

(Start: 19 @53418 has 2 MA's),

Gene: Hegedechwinu_87 Start: 49279, Stop: 49440, Start Num: 20

Candidate Starts for Hegedechwinu_87:

(9, 49105), (10, 49114), (12, 49138), (14, 49156), (18, 49249), (Start: 19 @49258 has 2 MA's), (Start: 20 @49279 has 5 MA's), (27, 49411), (29, 49420),

Gene: MacGully_83 Start: 56833, Stop: 56663, Start Num: 19

Candidate Starts for MacGully_83:

(Start: 19 @56833 has 2 MA's), (22, 56812), (24, 56731), (25, 56725), (27, 56698), (28, 56695), (30, 56689),

Gene: Maselop_74 Start: 53638, Stop: 53438, Start Num: 17

Candidate Starts for Maselop_74:

(1, 54439), (2, 54388), (3, 54136), (4, 54124), (5, 54031), (8, 53800), (Start: 17 @53638 has 5 MA's), (21, 53581), (23, 53566), (27, 53464), (30, 53455), (31, 53449),

Gene: Polyzuki_74 Start: 53630, Stop: 53430, Start Num: 17

Candidate Starts for Polyzuki_74:

(1, 54431), (2, 54380), (3, 54128), (4, 54116), (5, 54023), (8, 53792), (Start: 17 @53630 has 5 MA's), (21, 53573), (23, 53558), (27, 53456), (30, 53447), (31, 53441),

Gene: Spartacus_93 Start: 53156, Stop: 53317, Start Num: 20

Candidate Starts for Spartacus_93:

(9, 52982), (10, 52991), (12, 53015), (14, 53033), (18, 53126), (Start: 19 @53135 has 2 MA's), (Start: 20 @53156 has 5 MA's), (27, 53288), (29, 53297),

Gene: WaterT_115 Start: 57392, Stop: 57231, Start Num: 20

Candidate Starts for WaterT_115:

(15, 57464), (16, 57449), (Start: 20 @57392 has 5 MA's), (25, 57287), (26, 57275), (27, 57257), (29, 57248),

Gene: Yappy_117 Start: 57403, Stop: 57242, Start Num: 20

Candidate Starts for Yappy_117:

(Start: 20 @57403 has 5 MA's), (21, 57388), (22, 57382), (23, 57373), (26, 57286),