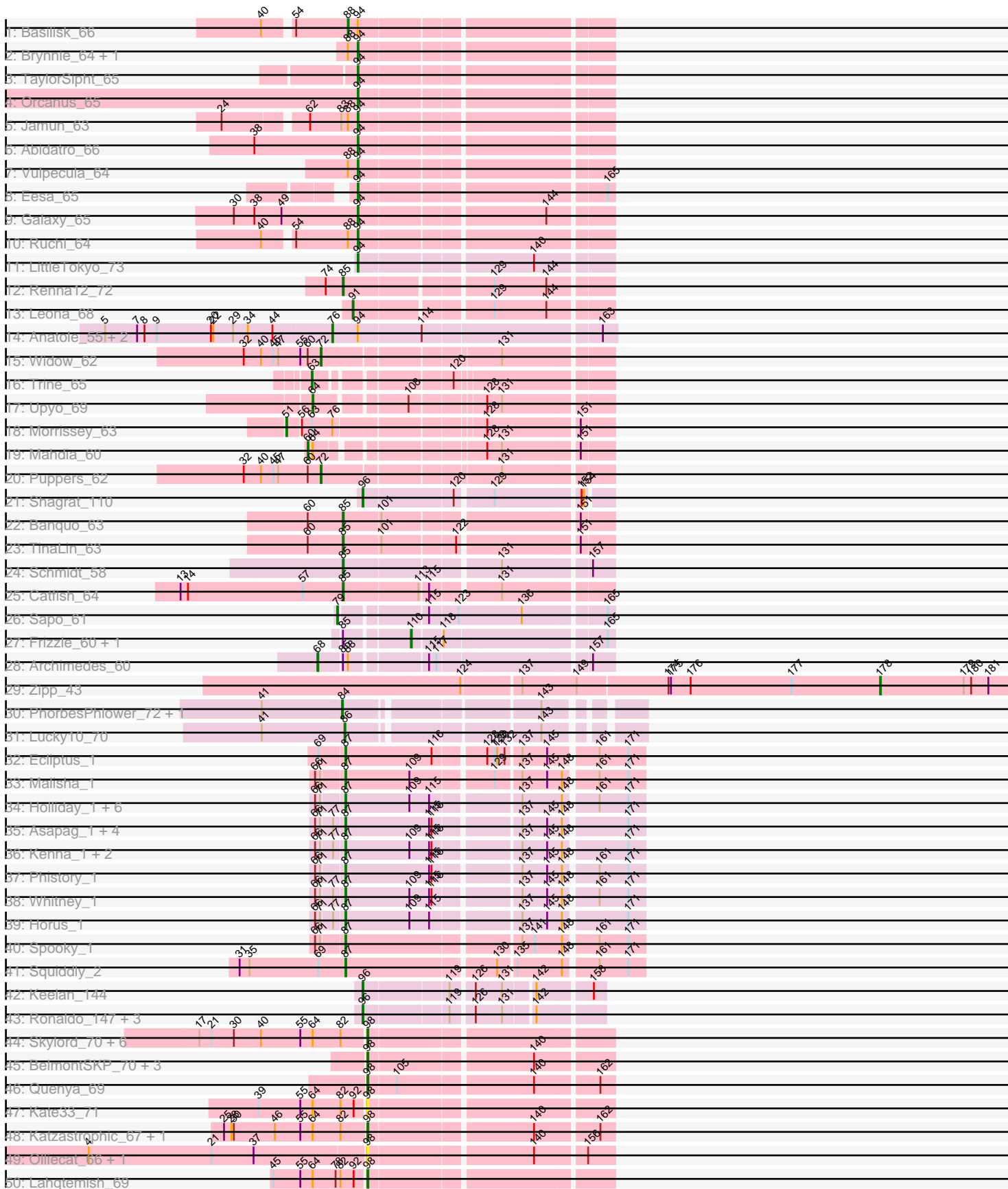
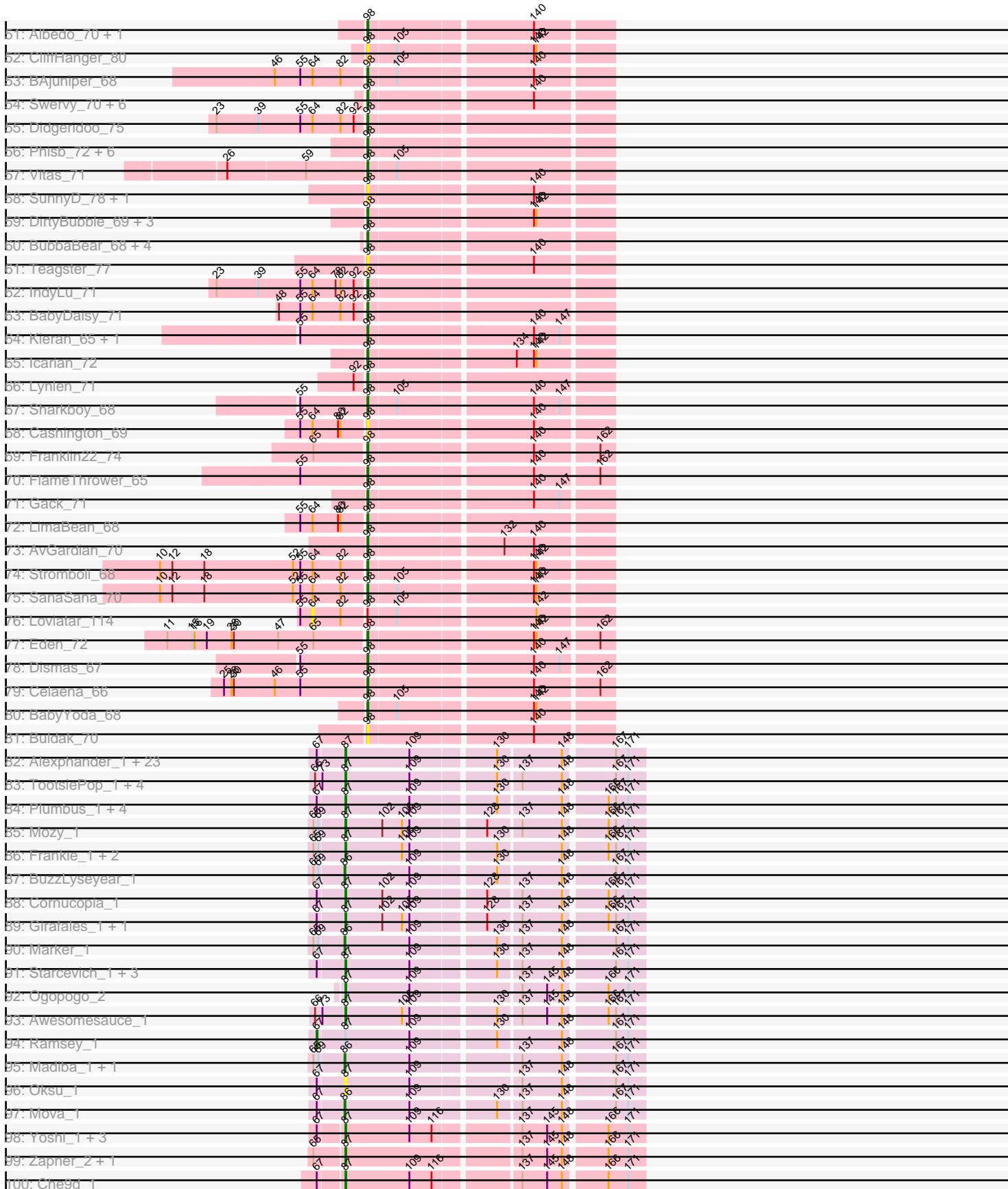


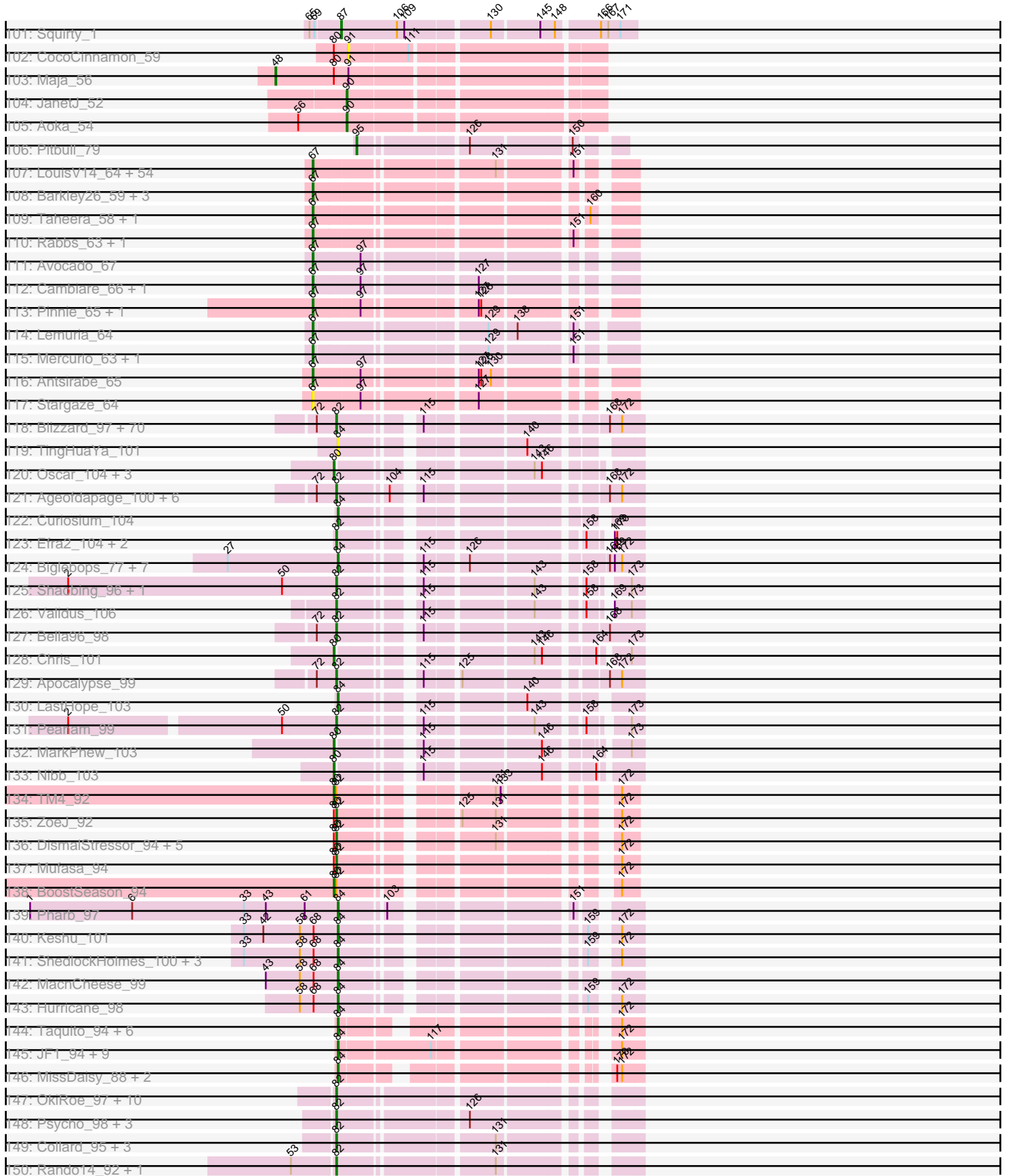
Pham 196186



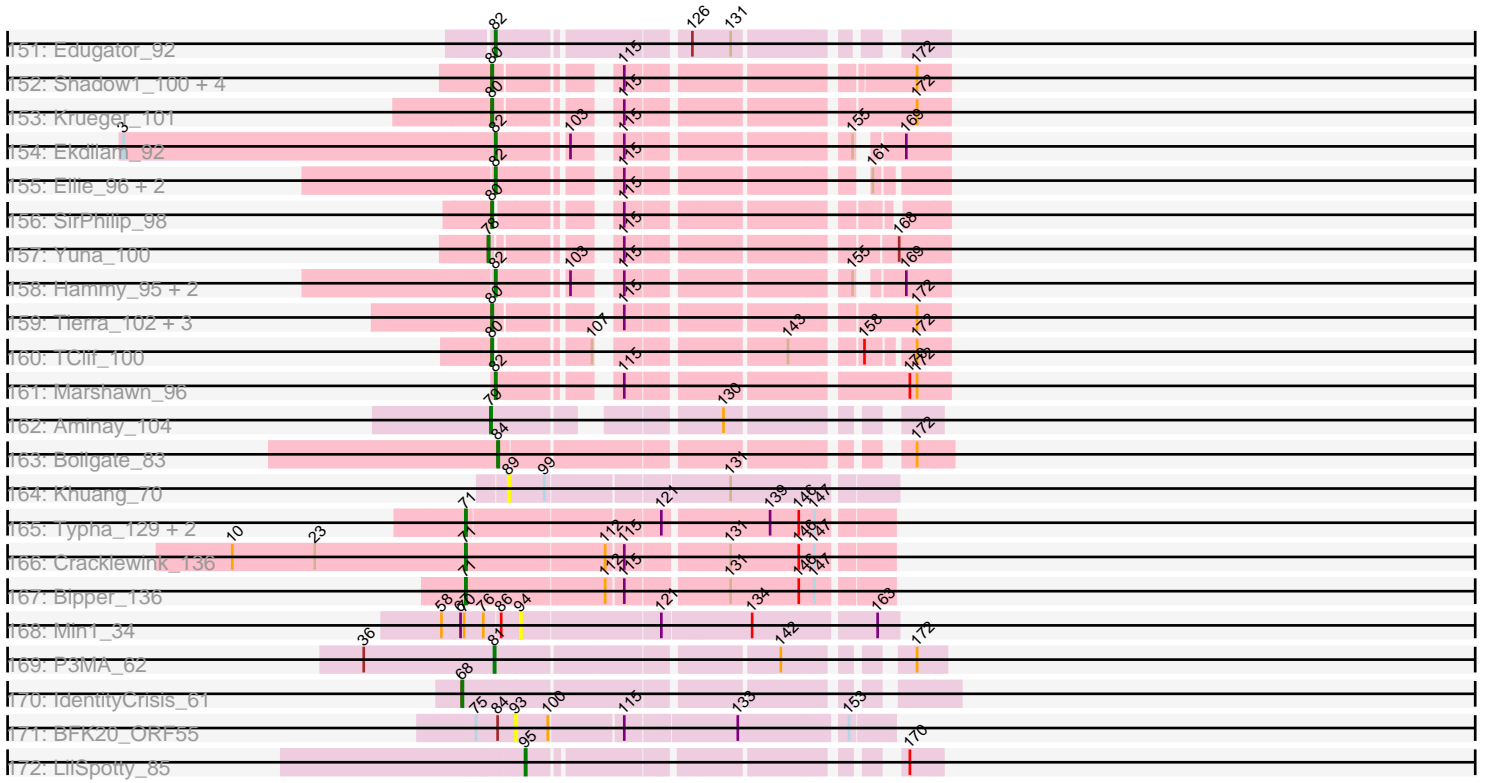
Pham 196186



Pham 196186



Pham 196186



Note: Tracks are now grouped by subcluster and scaled. Switching in subcluster is indicated by changes in track color. Track scale is now set by default to display the region 30 bp upstream of start 1 to 30 bp downstream of the last possible start. If this default region is judged to be packed too tightly with annotated starts, the track will be further scaled to only show that region of the ORF with annotated starts. This action will be indicated by adding "Zoomed" to the title. For starts, yellow indicates the location of called starts comprised solely of Glimmer/GeneMark auto-annotations, green indicates the location of called starts with at least 1 manual gene annotation.

Pham 196186 Report

This analysis was run 12/09/24 on database version 580.

Pham number 196186 has 473 members, 29 are drafts.

Phages represented in each track:

- Track 1 : Basilisk_66
- Track 2 : Brynnie_64, Chickaboom_66
- Track 3 : TaylorSipht_65
- Track 4 : Orcanus_65
- Track 5 : Jamun_63
- Track 6 : Abidatro_66
- Track 7 : Vulpecula_64
- Track 8 : Eesa_65
- Track 9 : Galaxy_65
- Track 10 : Ruchi_64
- Track 11 : LittleTokyo_73
- Track 12 : Renna12_72
- Track 13 : Leona_68
- Track 14 : Anatole_55, E1_55, B3_57
- Track 15 : Widow_62
- Track 16 : Trine_65
- Track 17 : Upyo_69
- Track 18 : Morrissey_63
- Track 19 : Mahdia_60
- Track 20 : Puppets_62
- Track 21 : Shagrat_110
- Track 22 : Banquo_63
- Track 23 : TinaLin_63
- Track 24 : Schmidt_58
- Track 25 : Catfish_64
- Track 26 : Sapo_61
- Track 27 : Frizzle_60, Ghobes_59
- Track 28 : Archimedes_60
- Track 29 : Zipp_43
- Track 30 : PhorbesPhlower_72, Morkie_74
- Track 31 : Lucky10_70
- Track 32 : Ecliptus_1
- Track 33 : Malisha_1
- Track 34 : Holliday_1, LitninMcQueen_1, Phabuloso_1, Kamaru_1, Budski_1, CheeseTouch_1, ODay_1
- Track 35 : Asapag_1, Getalong_1, Leroy_1, BENtherdunthat_1, Frickyeah_1
- Track 36 : Kenna_1, Periwinkle_1, Lutum_1

- Track 37 : Phistory_1
- Track 38 : Whitney_1
- Track 39 : Horus_1
- Track 40 : Spooky_1
- Track 41 : Squiddly_2
- Track 42 : Keelan_144
- Track 43 : Ronaldo_147, Guey18_149, Fryberger_144, Volt_150
- Track 44 : Skylord_70, Clayda5_72, Armstrong_70, Rollins_70, Bernstein_70, Coltrane_70, Brahms_70
- Track 45 : BelmontSKP_70, AnnaLie_70, Arroyo_71, SansAfet_72
- Track 46 : Quenya_69
- Track 47 : Kate33_71
- Track 48 : Katzastrophic_67, Bachaco_66
- Track 49 : Olliecat_66, Squirrel_66
- Track 50 : Lahqtemish_69
- Track 51 : Albedo_70, Kenzers_69
- Track 52 : CliffHanger_80
- Track 53 : BAjuniper_68
- Track 54 : Swervy_70, Eula_69, TukTuk_70, Jovita_68, Slay_70, Finalfrontier_69, Nicky22_69
- Track 55 : Didgeridoo_75
- Track 56 : Phisb_72, Johnathan_70, Burritobowl_72, SarBear_72, Abigail_70, QMacho_72, CroZenni_71
- Track 57 : Vitas_71
- Track 58 : SunnyD_78, Shayna_75
- Track 59 : DirtyBubble_69, Elva_73, Stoor_69, WalkingDead_71
- Track 60 : BubbaBear_68, DickRichards_68, Doobus_68, Albright_69, Avocadoman_69
- Track 61 : Teagster_77
- Track 62 : IndyLu_71
- Track 63 : BabyDaisy_71
- Track 64 : Kieran_65, Rona_66
- Track 65 : Icarian_72
- Track 66 : Lynlen_71
- Track 67 : Sharkboy_68
- Track 68 : Cashington_69
- Track 69 : Franklin22_74
- Track 70 : FlameThrower_65
- Track 71 : Gack_71
- Track 72 : LimaBean_68
- Track 73 : AvGardian_70
- Track 74 : Stromboli_68
- Track 75 : SanaSana_70
- Track 76 : Loviatar_114
- Track 77 : Eden_72
- Track 78 : Dismas_67
- Track 79 : Celaena_66
- Track 80 : BabyYoda_68
- Track 81 : Buldak_70
- Track 82 : Alexphander_1, Leozinho_1, Spikelee_1, Bobi_1, Kingsley_1, Stap_1, Cerasum_1, UncleRicky_1, Drago_1, Boomer_1, OwlsT2W_1, Enby_1, Sarma624_1, DosHalletts_1, Beakin_1, DaWorst_1, Coco12_1, BigPhil_1, RockyHorror_1, Lorde_1, JalFarm20_1, DirtMcgirt_1, Velveteen_1, Tootsieroll_1

- Track 83 : TootsiePop_1, DocMcStuffins_1, Misha28_1, Piper2020_1, ChickenDinner_1
- Track 84 : Plumbus_1, Job42_1, Kimberlium_1, MulchExplorer_1, Juice456_1
- Track 85 : Mozy_1
- Track 86 : Frankie_1, Hegedechwinu_1, Flathead_1
- Track 87 : BuzzLyseyear_1
- Track 88 : Cornucopia_1
- Track 89 : Girafales_1, Quico_1
- Track 90 : Marker_1
- Track 91 : Starcevich_1, Totinger_1, Rialto_1, LittleShirley_1
- Track 92 : Ogopogo_2
- Track 93 : Awesomesauce_1
- Track 94 : Ramsey_1
- Track 95 : Madiba_1, Pollywog_1
- Track 96 : Oksu_1
- Track 97 : Mova_1
- Track 98 : Yoshi_1, Avani_1, Demsculpinboyz_1, Soul22_1
- Track 99 : Zapner_2, Jabbawokkie_2
- Track 100 : Che9d_1
- Track 101 : Squirty_1
- Track 102 : CocoCinnamon_59
- Track 103 : Maja_56
- Track 104 : JanetJ_52
- Track 105 : Aoka_54
- Track 106 : Pitbull_79
- Track 107 : LouisV14_64, Camri_62, Marmie_62, PinkYoshi_62, Phish_61, CassieYates_62, Remy19_62, Kareem_63, Jane_63, Maliketh_61, Hope_62, OctaviousRex_61, Schiebel_60, Renaissance_61, Aroostook_62, Jonghyun_60, Phreak_62, Hotshotbaby7_62, Mowgli_62, CLED96_61, Cedasite_62, BruceB_62, Sweets_62, Cherrybomb426_61, DNAllI_0059, TomBrady_62, Chance64_62, DMoney_61, Gideon_62, Kasen3_63, Sizemore_63, Gomashi_61, JorRay_63, Coleslaw_61, Crespo_61, Darionha_62, Angel_60, Olga_63, Plagueis_62, Peeb_61, Annihilator_61, ShaboiShabazz_61, BPs_62, ECartman_60, Grizzly_61, Frosty24_62, Halo_63, BQuat_61, Avrafan_61, ZoMa_61, Wendigo_61, Jolene_62, Zombie_62, AzulaCat_61, GoldenAsh_60
- Track 108 : Barkley26_59, Periodt_62, Liefie_59, Paito_63
- Track 109 : Taheera_58, Terror_58
- Track 110 : Rabbs_63, Sneeze_62
- Track 111 : Avocado_67
- Track 112 : Cambiare_66, FlagStaff_64
- Track 113 : Pinnie_65, MOOREtheMARYer_66
- Track 114 : Lemuria_64
- Track 115 : Mercurio_63, Jolie2_61
- Track 116 : Antsirabe_65
- Track 117 : Stargaze_64
- Track 118 : Blizzard_97, Adonis_96, TreyKay_98, Capricorn_97, Homura_95, Beezoo_100, Adephegia_95, JAWS_95, MeaningOfLife_98, Megsy_102, Deby_96, Geraldini_97, BGlluviae_96, Boiiii_97, Jeckyll_97, Belladonna_97, Veliki_97, YoureAdopted_95, Spock_96, Angelica_95, Tachez_97, Jayhawk_100, ActinUp_97, TruffulaTree_98, Atiba_97, BEEST_96, BaghaKamala_96, Lunahalos_96, Emerson_101, HedwigODU_96, ShiaSurprise_99, TaiwanKao_98, Durfee_97, DrHayes_98, Anaya_99, Ramen_97, Sulley_95, Rapunzel97_99, AlishaPH_89, TiniBug_95, Prithvi_98, Hyperbowlee_95, Jarvi_96, Zabiza_92, Pokerus_96,

Slimphazie_99, LindNT_94, SamuelLPlaqson_98, Mynx_97, Dalmuri_97, CheetoDust_96, Ganymede_96, Padpat_101, CrimD_96, Twitch_97, QuincyRose_94, Rosmarinus_97, CaseJules_100, Piatt_95, BarrelRoll_96, Padfoot_96, Peel_96, Llorens_96, CREW_95, Tiri_97, Asayake_97, Urkel_98, Inky_96, Topper_96, Joy99_98, Zavala_98

- Track 119 : TingHuaYa_101
- Track 120 : Oscar_104, KiSi_104, Scarlett_103, LeMond_103
- Track 121 : Ageofdapage_100, Illumine_100, Murucutumbu_96, Stinson_97, Devera_103, LaterM_96, Dole_99
- Track 122 : Curiosium_104
- Track 123 : Efra2_104, Guanica15_103, Yunkel11_101
- Track 124 : Binglebops_77, SgtBeansprout_78, LilPharaoh_78, Enkosi_79, Amelie_77, Nutello_77, Mdavu_78, Nikao_80
- Track 125 : Shaobing_96, Niklas_98
- Track 126 : Validus_106
- Track 127 : Bella96_98
- Track 128 : Chris_101
- Track 129 : Apocalypse_99
- Track 130 : LastHope_103
- Track 131 : Peanam_99
- Track 132 : MarkPhew_103
- Track 133 : Nibb_103
- Track 134 : TM4_92
- Track 135 : ZoeJ_92
- Track 136 : DismalStressor_94, Findley_94, Strobilo_95, Marcoliusprime_92, DismalFunk_94, Milly_94
- Track 137 : Mufasa_94
- Track 138 : BoostSeason_94
- Track 139 : Pharb_97
- Track 140 : Keshu_101
- Track 141 : ShedlockHolmes_100, TBond007_97, TripleTrouble_97, Pixie_100
- Track 142 : MacnCheese_99
- Track 143 : Hurricane_98
- Track 144 : Taquito_94, Chancellor_94, Slarp_92, Cheetobro_92, SamScheppers_93, OmniCritical_94, Mitti_94
- Track 145 : JF1_94, Malthus_95, Kraw_95, Y2_90, Fionnbharth_94, Juliette_96, Ruthiejr_96, Y10_90, Wintermute_94, Eponine_96
- Track 146 : MissDaisy_88, Reptar3000_88, Patt_87
- Track 147 : OkiRoe_97, Waterfoul_95, Guillsminger_96, Thyatira_97, SoSeph_96, Heftyboy_96, Miryou_98, Leston_95, Gengar_96, Paola_93, Feyre_98
- Track 148 : Psycho_98, Dadosky_100, Larva_98, AlleyCat_100
- Track 149 : Collard_95, InvictusManeo_97, Kratio_100, Agent47_97
- Track 150 : Rando14_92, Omnicron_96
- Track 151 : Edugator_92
- Track 152 : Shadow1_100, Cain_102, Bryler_94, Phrank_103, Sunflower1121_100
- Track 153 : Krueger_101
- Track 154 : Ekdilam_92
- Track 155 : Ellie_96, Amgine_97, Fefferhead_98
- Track 156 : SirPhilip_98
- Track 157 : Yuna_100
- Track 158 : Hammy_95, DarthP_95, Amohnition_95
- Track 159 : Tierra_102, PhelpsODU_92, Ximenita_103, Syra333_99
- Track 160 : TClif_100

- Track 161 : Marshawn_96
- Track 162 : Aminay_104
- Track 163 : Boilgate_83
- Track 164 : Khuang_70
- Track 165 : Typha_129, Hilltopfarm_134, AuntGwenStacy_132
- Track 166 : Cracklewink_136
- Track 167 : Bipper_136
- Track 168 : Min1_34
- Track 169 : P3MA_62
- Track 170 : IdentityCrisis_61
- Track 171 : BFK20_ORF55
- Track 172 : LilSpotty_85

Summary of Final Annotations (See graph section above for start numbers):

The start number called the most often in the published annotations is 82, it was called in 124 of the 444 non-draft genes in the pham.

Genes that call this "Most Annotated" start:

• ActinUp_97, Adephagia_95, Adonis_96, Agent47_97, Ageofdapage_100, AlishaPH_89, AlleyCat_100, Amgine_97, Amohnition_95, Anaya_99, Angelica_95, Apocalypse_99, Asayake_97, Atiba_97, BEEST_96, BGIlluviae_96, BaghaKamala_96, BarrelRoll_96, Beezoo_100, Bella96_98, Belladonna_97, Blizzard_97, Boiiii_97, CREW_95, Capricorn_97, CaseJules_100, CheetoDust_96, Collard_95, CrimD_96, Dadosky_100, Dalmuri_97, DarthP_95, Deby_96, Devera_103, DismalFunk_94, DismalStressor_94, Dole_99, DrHayes_98, Durfee_97, Edugator_92, Efra2_104, Ekdilam_92, Ellie_96, Emerson_101, Fefferhead_98, Feyre_98, Findley_94, Ganymede_96, Gengar_96, Geraldini_97, Guanica15_103, Guillsminger_96, Hammy_95, HedwigODU_96, Heftyboy_96, Homura_95, Hyperbowlee_95, Illumine_100, Inky_96, InvictusManeo_97, JAWS_95, Jarvi_96, Jayhawk_100, Jeckyll_97, Joy99_98, Kratio_100, Larva_98, LaterM_96, Leston_95, LindNT_94, Llorens_96, Lunahalos_96, Marcoliusprime_92, Marshawn_96, MeaningOfLife_98, Megsy_102, Milly_94, Miryou_98, Mufasa_94, Murucutumbu_96, Mynx_97, Niklas_98, OkiRoe_97, Omnicron_96, Padfoot_96, Padpat_101, Paola_93, Peanam_99, Peel_96, Piatt_95, Pokerus_96, Prithvi_98, Psycho_98, QuincyRose_94, Ramen_97, Rando14_92, Rapunzel97_99, Rosmarinus_97, SamuelLPlaqson_98, Shaobing_96, ShiaSurprise_99, Slimphazie_99, SoSeph_96, Spock_96, Stinson_97, Strobilo_95, Sulley_95, Tachez_97, TaiwanKao_98, Thyatira_97, TiniBug_95, Tiri_97, Topper_96, TreyKay_98, TruffulaTree_98, Twitch_97, Urkel_98, Validus_106, Veliki_97, Waterfoul_95, YoureAdopted_95, Yunkel11_101, Zabiza_92, Zavala_98, ZoeJ_92,

Genes that have the "Most Annotated" start but do not call it:

• Armstrong_70, BAjuniper_68, BabyDaisy_71, Bachaco_66, Bernstein_70, BoostSeason_94, Brahms_70, Cashington_69, Clayda5_72, Coltrane_70, Didgeridoo_75, IndyLu_71, Kate33_71, Katzastrophic_67, Lahqtemish_69, LimaBean_68, Loviatar_114, Rollins_70, SanaSana_70, Skylord_70, Stromboli_68, TM4_92,

Genes that do not have the "Most Annotated" start:

• Abidatro_66, Abigail_70, Albedo_70, Albright_69, Alexphander_1, Amelie_77, Aminay_104, Anatole_55, Angel_60, AnnaLie_70, Annihilator_61, Antsirabe_65, Aoka_54, Archimedes_60, Aroostook_62, Arroyo_71, Asapag_1, AuntGwenStacy_132, AvGardian_70, Avani_1, Avocado_67, Avocadoman_69, Avrafan_61, Awesomesauce_1, AzulaCat_61, B3_57, BĒNtherdunthat_1, BFK20_ORF55, BPs_62, BQuat_61, BabyYoda_68, Banquo_63, Barkley26_59, Basilisk_66, Beakin_1, BelmontSKP_70, BigPhil_1, Binglebops_77, Bipper_136, Bobi_1, Boilgate_83, Boomer_1, BruceB_62, Bryler_94, Brynnie_64, BubbaBear_68, Budski_1, Buldak_70, Burritobowl_72, BuzzLyseyear_1, CLED96_61, Cain_102, Cambiare_66, Camri_62, CassieYates_62, Catfish_64, Cedasite_62, Celaena_66, Cerasum_1, Chance64_62, Chancellor_94, Che9d_1, CheeseTouch_1, Cheetobro_92, Cherrybomb426_61, Chickaboom_66, ChickenDinner_1, Chris_101, CliffHanger_80, Coco12_1, CocoCinnamon_59, Coleslaw_61, Cornucopia_1, Cracklewink_136, Crespo_61, CroZenni_71, Curiosium_104, DMoney_61, DNAIII_0059, DaWorst_1, Darionha_62, Demsculpinboyz_1, DickRichards_68, DirtMcgirt_1, DirtyBubble_69, Dismas_67, DocMcStuffins_1, Doobus_68, DosHalletts_1, Drago_1, E1_55, ECartman_60, Ecliptus_1, Eden_72, Eesa_65, Elva_73, Enby_1, Enkosi_79, Eponine_96, Eula_69, Finalfrontier_69, Fionnbharth_94, FlagStaff_64, FlameThrower_65, Flathead_1, Frankie_1, Franklin22_74, Frickyeah_1, Frizzle_60, Frosty24_62, Fryberger_144, Gack_71, Galaxy_65, Getalong_1, Ghobes_59, Gideon_62, Girafales_1, GoldenAsh_60, Gomashi_61, Grizzly_61, Guey18_149, Halo_63, Hegedechwinu_1, Hilltopfarm_134, Holliday_1, Hope_62, Horus_1, Hotshotbaby7_62, Hurricane_98, Icarian_72, IdentityCrisis_61, JF1_94, Jabbawokkie_2, JaiFarm20_1, Jamun_63, Jane_63, JanetJ_52, Job42_1, Johnathan_70, Jolene_62, Jolie2_61, Jonghyun_60, JorRay_63, Jovita_68, Juice456_1, Juliette_96, Kamaru_1, Kareem_63, Kasen3_63, Keelan_144, Kenna_1, Kenzers_69, Keshu_101, Khuang_70, KiSi_104, Kieran_65, Kimberlium_1, Kingsley_1, Kraw_95, Krueger_101, LastHope_103, LeMond_103, Lemuria_64, Leona_68, Leozinho_1, Leroy_1, Liefie_59, LilPharaoh_78, LilSpotty_85, LitninMcQueen_1, LittleShirley_1, LittleTokyo_73, Lorde_1, LouisV14_64, Lucky10_70, Lutum_1, Lynlen_71, MOOREtheMARYer_66, MacnCheese_99, Madiba_1, Mahdia_60, Maja_56, Maliketh_61, Malisha_1, Malthus_95, MarkPhew_103, Marker_1, Marmie_62, Mdavu_78, Mercurio_63, Min1_34, Misha28_1, MissDaisy_88, Mitti_94, Morkie_74, Morrissey_63, Mova_1, Mowgli_62, Mozy_1, MulchExplorer_1, Nibb_103, Nicky22_69, Nikao_80, Nutello_77, ODay_1, OctaviousRex_61, Ogopogo_2, Oksu_1, Olga_63, Olliecat_66, OmniCritical_94, Orcanus_65, Oscar_104, OwlsT2W_1, P3MA_62, Paito_63, Patt_87, Peeb_61, Periodt_62, Periwinkle_1, Phabuloso_1, Pharb_97, PhelpsODU_92, Phisb_72, Phish_61, Phistory_1, PhorbesPhlower_72, Phrank_103, Phreak_62, PinkYoshi_62, Pinnie_65, Piper2020_1, Pitbull_79, Pixie_100, Plagueis_62, Plumbus_1, Pollywog_1, Puppies_62, QMacho_72, Quenya_69, Quico_1, Rabbs_63, Ramsey_1, Remy19_62, Renaissance_61, Renna12_72, Reptar3000_88, Rialto_1, RockyHorror_1, Rona_66, Ronaldo_147, Ruchi_64, Ruthiejr_96, SamScheppers_93, SansAfet_72, Sapo_61, SarBear_72, Sarma624_1, Scarlett_103, Schiebel_60, Schmidt_58, SgtBeansprout_78, ShaboiShabazz_61, Shadow1_100, Shagrat_110, Sharkboy_68, Shayna_75, ShedlockHolmes_100, SirPhilip_98, Sizemore_63, Slarp_92, Slay_70, Sneeze_62, Soul22_1, Spikelee_1, Spooky_1, Squiddly_2, Squircle_66, Squirty_1, Stap_1, Starcevich_1, Stargaze_64, Stoor_69, Sunflower1121_100, SunnyD_78, Sweets_62, Swervy_70, Syra333_99, TBond007_97, TClif_100, Taheera_58, Taquito_94, TaylorSipht_65, Teagster_77, Terror_58, Tierra_102, TinaLin_63, TingHuaYa_101, TomBrady_62, TootsiePop_1, Tootsieroll_1, Totinger_1, TribbleTrouble_97, Trine_65, TukTuk_70, Typha_129, UncleRicky_1, Upyo_69, Velveteen_1, Vitas_71, Volt_150, Vulpecula_64,

WalkingDead_71, Wendigo_61, Whitney_1, Widow_62, Wintermute_94, Ximenita_103, Y10_90, Y2_90, Yoshi_1, Yuna_100, Zapner_2, Zipp_43, ZoMa_61, Zombie_62,

Summary by start number:

Start 48:

- Found in 2 of 473 (0.4%) of genes in pham
- Manual Annotations of this start: 1 of 444
- Called 50.0% of time when present
- Phage (with cluster) where this start called: Maja_56 (FO),

Start 51:

- Found in 1 of 473 (0.2%) of genes in pham
- Manual Annotations of this start: 1 of 444
- Called 100.0% of time when present
- Phage (with cluster) where this start called: Morrissey_63 (CD),

Start 60:

- Found in 5 of 473 (1.1%) of genes in pham
- Manual Annotations of this start: 1 of 444
- Called 20.0% of time when present
- Phage (with cluster) where this start called: Mahdia_60 (CD),

Start 63:

- Found in 2 of 473 (0.4%) of genes in pham
- Manual Annotations of this start: 1 of 444
- Called 50.0% of time when present
- Phage (with cluster) where this start called: Trine_65 (CD),

Start 64:

- Found in 22 of 473 (4.7%) of genes in pham
- Manual Annotations of this start: 1 of 444
- Called 9.1% of time when present
- Phage (with cluster) where this start called: Loviatar_114 (EB), Upyo_69 (CD),

Start 67:

- Found in 118 of 473 (24.9%) of genes in pham
- Manual Annotations of this start: 69 of 444
- Called 62.7% of time when present
- Phage (with cluster) where this start called: Angel_60 (G1), Annihilator_61 (G1), Antsirabe_65 (G5), Aroostook_62 (G1), Avocado_67 (G2), Avrafan_61 (G1), AzulaCat_61 (G1), BPs_62 (G1), BQuat_61 (G1), Barkley26_59 (G1), BruceB_62 (G1), CLED96_61 (G1), Cambiare_66 (G2), Camri_62 (G1), CassieYates_62 (G1), Cedasite_62 (G1), Chance64_62 (G1), Cherrybomb426_61 (G1), Coleslaw_61 (G1), Crespo_61 (G1), DMoney_61 (G1), DNAllI_0059 (G1), Darionha_62 (G1), ECartman_60 (G1), FlagStaff_64 (G2), Frosty24_62 (G1), Gideon_62 (G1), GoldenAsh_60 (G1), Gomashi_61 (G1), Grizzly_61 (G1), Halo_63 (G1), Hope_62 (G1), Hotshotbaby7_62 (G1), Jane_63 (G1), Jolene_62 (G1), Jolie2_61 (G4), Jonghyun_60 (G1), JorRay_63 (G1), Kareem_63 (G1), Kasen3_63 (G1), Lemuria_64 (G4), Liefie_59 (G1), LouisV14_64 (G1), MOOREtheMARYer_66 (G3), Maliketh_61 (G1), Marmie_62 (G1), Mercurio_63 (G4), Mowgli_62 (G1), OctaviousRex_61 (G1), Olga_63 (G1), Paito_63 (G1), Peeb_61 (G1), Periodt_62 (G1), Phish_61 (G1),

Phreak_62 (G1), PinkYoshi_62 (G1), Pinnie_65 (G3), Plagueis_62 (G1), Rabbs_63 (G1), Ramsey_1 (F1), Remy19_62 (G1), Renaissance_61 (G1), Schiebel_60 (G1), ShaboiShabazz_61 (G1), Sizemore_63 (G1), Sneeze_62 (G1), Stargaze_64 (G5), Sweets_62 (G1), Taheera_58 (G1), Terror_58 (G1), TomBrady_62 (G1), Wendigo_61 (G1), ZoMa_61 (G1), Zombie_62 (G1),

Start 68:

- Found in 9 of 473 (1.9%) of genes in pham
- Manual Annotations of this start: 2 of 444
- Called 22.2% of time when present
- Phage (with cluster) where this start called: Archimedes_60 (DA), IdentityCrisis_61 (singleton),

Start 71:

- Found in 25 of 473 (5.3%) of genes in pham
- Manual Annotations of this start: 4 of 444
- Called 20.0% of time when present
- Phage (with cluster) where this start called: AuntGwenStacy_132 (Y), Bipper_136 (Y), Cracklewink_136 (Y), Hilltopfarm_134 (Y), Typha_129 (Y),

Start 72:

- Found in 82 of 473 (17.3%) of genes in pham
- Manual Annotations of this start: 2 of 444
- Called 2.4% of time when present
- Phage (with cluster) where this start called: Puppies_62 (CD), Widow_62 (CD),

Start 76:

- Found in 5 of 473 (1.1%) of genes in pham
- Manual Annotations of this start: 3 of 444
- Called 60.0% of time when present
- Phage (with cluster) where this start called: Anatole_55 (BV), B3_57 (BV), E1_55 (BV),

Start 78:

- Found in 3 of 473 (0.6%) of genes in pham
- Manual Annotations of this start: 1 of 444
- Called 33.3% of time when present
- Phage (with cluster) where this start called: Yuna_100 (K6),

Start 79:

- Found in 2 of 473 (0.4%) of genes in pham
- Manual Annotations of this start: 2 of 444
- Called 100.0% of time when present
- Phage (with cluster) where this start called: Aminay_104 (K7), Sapo_61 (DA),

Start 80:

- Found in 33 of 473 (7.0%) of genes in pham
- Manual Annotations of this start: 21 of 444
- Called 63.6% of time when present
- Phage (with cluster) where this start called: BoostSeason_94 (K2), Bryler_94 (K6), Cain_102 (K6), Chris_101 (K1), KiSi_104 (K1), Krueger_101 (K6), LeMond_103 (K1), MarkPhew_103 (K1), Nibb_103 (K1), Oscar_104 (K1), PhelpsODU_92 (K6), Phrank_103 (K6), Scarlett_103 (K1), Shadow1_100 (K6), SirPhilip_98 (K6),

Sunflower1121_100 (K6), Syra333_99 (K6), TClif_100 (K6), TM4_92 (K2), Tierra_102 (K6), Ximenita_103 (K6),

Start 81:

- Found in 1 of 473 (0.2%) of genes in pham
- Manual Annotations of this start: 1 of 444
- Called 100.0% of time when present
- Phage (with cluster) where this start called: P3MA_62 (singleton),

Start 82:

- Found in 147 of 473 (31.1%) of genes in pham
- Manual Annotations of this start: 124 of 444
- Called 85.0% of time when present
- Phage (with cluster) where this start called: ActinUp_97 (K1), Adephagia_95 (K1), Adonis_96 (K1), Agent47_97 (K5), Ageofdapage_100 (K1), AlishaPH_89 (K1), AlleyCat_100 (K5), Amgine_97 (K6), Amohnition_95 (K6), Anaya_99 (K1), Angelica_95 (K1), Apocalypse_99 (K1), Asayake_97 (K1), Atiba_97 (K1), BEEST_96 (K1), BGlluviae_96 (K1), BaghaKamala_96 (K1), BarrelRoll_96 (K1), Beezoo_100 (K1), Bella96_98 (K1), Belladonna_97 (K1), Blizzard_97 (K1), Boiiii_97 (K1), CREW_95 (K1), Capricorn_97 (K1), CaseJules_100 (K1), CheetoDust_96 (K1), Collard_95 (K5), CrimD_96 (K1), Dadosky_100 (K5), Dalmuri_97 (K1), DARTH_95 (K6), Deby_96 (K1), Devera_103 (K1), DismalFunk_94 (K2), DismalStressor_94 (K2), Dole_99 (K1), DrHayes_98 (K1), Durfee_97 (K1), Edugator_92 (K5), Efra2_104 (K1), Ekdilam_92 (K6), Ellie_96 (K6), Emerson_101 (K1), Fefferhead_98 (K6), Feyre_98 (K5), Findley_94 (K2), Ganymede_96 (K1), Gengar_96 (K5), Geraldini_97 (K1), Guanica15_103 (K1), Guillsminger_96 (K5), Hammy_95 (K6), HedwigODU_96 (K1), Heftyboy_96 (K5), Homura_95 (K1), Hyperbowlee_95 (K1), Illumine_100 (K1), Inky_96 (K1), InvictusManeo_97 (K5), JAWS_95 (K1), Jarvi_96 (K1), Jayhawk_100 (K1), Jeckyll_97 (K1), Joy99_98 (K1), Kratio_100 (K5), Larva_98 (K5), LaterM_96 (K1), Leston_95 (K5), LindNT_94 (K1), Llorens_96 (K1), Lunahalos_96 (K1), Marcoliusprime_92 (K2), Marshawn_96 (K6), MeaningOfLife_98 (K1), Megsy_102 (K1), Milly_94 (K2), Miryou_98 (K5), Mufasa_94 (K2), Murucutumbu_96 (K1), Mynx_97 (K1), Nikias_98 (K1), OkiRoe_97 (K5), Omnicron_96 (K5), Padfoot_96 (K1), Padpat_101 (K1), Paola_93 (K5), Peanam_99 (K1), Peel_96 (K1), Piatt_95 (K1), Pokerus_96 (K1), Prithvi_98 (K1), Psycho_98 (K5), QuincyRose_94 (K1), Ramen_97 (K1), Rando14_92 (K5), Rapunzel97_99 (K1), Rosmarinus_97 (K1), SamuelLPlaqson_98 (K1), Shaobing_96 (K1), ShiaSurprise_99 (K1), Slimphazie_99 (K1), SoSeph_96 (K5), Spock_96 (K1), Stinson_97 (K1), Strobilo_95 (K2), Sulley_95 (K1), Tachez_97 (K1), TaiwanKao_98 (K1), Thyatira_97 (K5), TiniBug_95 (K1), Tiri_97 (K1), Topper_96 (K1), TreyKay_98 (K1), TruffulaTree_98 (K1), Twitch_97 (K1), Urkel_98 (K1), Validus_106 (K1), Veliki_97 (K1), Waterfoul_95 (K5), YoureAdopted_95 (K1), Yunkel11_101 (K1), Zabiza_92 (K1), Zavala_98 (K1), ZoeJ_92 (K2),

Start 84:

- Found in 43 of 473 (9.1%) of genes in pham
- Manual Annotations of this start: 40 of 444
- Called 97.7% of time when present
- Phage (with cluster) where this start called: Amelie_77 (K1), Binglebops_77 (K1), Boilgate_83 (K8), Chancellor_94 (K4), Cheetobro_92 (K4), Curiosium_104 (K1), Enkosi_79 (K1), Eponine_96 (K4), Fionnbharth_94 (K4), Hurricane_98 (K3), JF1_94 (K4), Juliette_96 (K4), Keshu_101 (K3), Kraw_95 (K4), LastHope_103 (K1), LilPharaoh_78 (K1), MacnCheese_99 (K3), Malthus_95 (K4), Mdavu_78 (K1),

MissDaisy_88 (K4), Mitti_94 (K4), Morkie_74 (DH), Nikao_80 (K1), Nutello_77 (K1), OmniCritical_94 (K4), Patt_87 (K4), Pharb_97 (K3), PhorbesPhlower_72 (DH), Pixie_100 (K3), Reptar3000_88 (K4), Ruthiejr_96 (K4), SamScheppers_93 (K4), SgtBeansprout_78 (K1), ShedlockHolmes_100 (K3), Slarp_92 (K4), TBond007_97 (K3), Taquito_94 (K4), TingHuaYa_101 (K1), TribbleTrouble_97 (K3), Wintermute_94 (K4), Y10_90 (K4), Y2_90 (K4),

Start 85:

- Found in 8 of 473 (1.7%) of genes in pham
- Manual Annotations of this start: 5 of 444
- Called 62.5% of time when present
- Phage (with cluster) where this start called: Banquo_63 (CU1), Catfish_64 (CU5), Renna12_72 (AS3), Schmidt_58 (CU4), TinaLin_63 (CU1),

Start 86:

- Found in 7 of 473 (1.5%) of genes in pham
- Manual Annotations of this start: 6 of 444
- Called 85.7% of time when present
- Phage (with cluster) where this start called: BuzzLyseyear_1 (F1), Lucky10_70 (DH), Madiba_1 (F1), Marker_1 (F1), Mova_1 (F1), Pollywog_1 (F1),

Start 87:

- Found in 79 of 473 (16.7%) of genes in pham
- Manual Annotations of this start: 74 of 444
- Called 98.7% of time when present
- Phage (with cluster) where this start called: Alexphander_1 (F1), Asapag_1 (DN1), Avani_1 (F2), Awesomesauce_1 (F1), BENtherdunthat_1 (DN1), Beakin_1 (F1), BigPhil_1 (F1), Bobi_1 (F1), Boomer_1 (F1), Budski_1 (DN), Cerasum_1 (F1), Che9d_1 (F2), CheeseTouch_1 (DN1), ChickenDinner_1 (F1), Coco12_1 (F1), Cornucopia_1 (F1), DaWorst_1 (F1), Demsculpinboyz_1 (F2), DirtMcgirt_1 (F1), DocMcStuffins_1 (F1), DosHalletts_1 (F1), Drago_1 (F1), Ecliptus_1 (DN), Enby_1 (F1), Flathead_1 (F1), Frankie_1 (F1), Frickyeah_1 (DN1), Getalong_1 (DN1), Girafales_1 (F1), Hegedechwinu_1 (F1), Holliday_1 (DN1), Horus_1 (DN1), Jabbawokkie_2 (F2), JalFarm20_1 (F1), Job42_1 (F1), Juice456_1 (F1), Kamaru_1 (DN1), Kenna_1 (DN1), Kimberlium_1 (F1), Kingsley_1 (F1), Leozinho_1 (F1), Leroy_1 (DN1), LitninMcQueen_1 (DN1), LittleShirley_1 (F1), Lorde_1 (F1), Lutum_1 (DN1), Malisha_1 (DN), Misha28_1 (F1), Mozy_1 (F1), MulchExplorer_1 (F1), ODay_1 (DN), Ogopogo_2 (F1), Oksu_1 (F1), OwlsT2W_1 (F1), Periwinkle_1 (DN1), Phabuloso_1 (DN1), Phistory_1 (DN1), Piper2020_1 (F1), Plumbus_1 (F1), Quico_1 (F1), Rialto_1 (F1), RockyHorror_1 (F1), Sarma624_1 (F1), Soul22_1 (F2), Spikelee_1 (F1), Spooky_1 (DN2), Squiddly_2 (DN2), Squirty_1 (F3), Stap_1 (F1), Starcevich_1 (F1), TootsiePop_1 (F1), Tootsieroll_1 (F1), Totinger_1 (F1), UncleRicky_1 (F1), Velveteen_1 (F1), Whitney_1 (DN1), Yoshi_1 (F2), Zapner_2 (F2),

Start 88:

- Found in 7 of 473 (1.5%) of genes in pham
- Manual Annotations of this start: 1 of 444
- Called 14.3% of time when present
- Phage (with cluster) where this start called: Basilisk_66 (AS1),

Start 89:

- Found in 1 of 473 (0.2%) of genes in pham

- No Manual Annotations of this start.
- Called 100.0% of time when present
- Phage (with cluster) where this start called: Khuang_70 (UNK),

Start 90:

- Found in 2 of 473 (0.4%) of genes in pham
- Manual Annotations of this start: 2 of 444
- Called 100.0% of time when present
- Phage (with cluster) where this start called: Aoka_54 (FO), JanetJ_52 (FO),

Start 91:

- Found in 3 of 473 (0.6%) of genes in pham
- Manual Annotations of this start: 1 of 444
- Called 66.7% of time when present
- Phage (with cluster) where this start called: CocoCinnamon_59 (FO), Leona_68 (AS3),

Start 93:

- Found in 1 of 473 (0.2%) of genes in pham
- No Manual Annotations of this start.
- Called 100.0% of time when present
- Phage (with cluster) where this start called: BFK20_ORF55 (singleton),

Start 94:

- Found in 16 of 473 (3.4%) of genes in pham
- Manual Annotations of this start: 11 of 444
- Called 75.0% of time when present
- Phage (with cluster) where this start called: Abidatro_66 (AS1), Brynnie_64 (AS1), Chickaboom_66 (AS1), Eesa_65 (AS1), Galaxy_65 (AS1), Jamun_63 (AS1), LittleTokyo_73 (AS2), Min1_34 (singleton), Orcanus_65 (AS1), Ruchi_64 (AS1), TaylorSipt_65 (AS1), Vulpecula_64 (AS1),

Start 95:

- Found in 2 of 473 (0.4%) of genes in pham
- Manual Annotations of this start: 2 of 444
- Called 100.0% of time when present
- Phage (with cluster) where this start called: LilSpotty_85 (singleton), Pitbull_79 (FQ),

Start 96:

- Found in 6 of 473 (1.3%) of genes in pham
- Manual Annotations of this start: 6 of 444
- Called 100.0% of time when present
- Phage (with cluster) where this start called: Fryberger_144 (DP), Guey18_149 (DP), Keelan_144 (DP), Ronaldo_147 (DP), Shagrat_110 (CF), Volt_150 (DP),

Start 98:

- Found in 71 of 473 (15.0%) of genes in pham
- Manual Annotations of this start: 60 of 444
- Called 98.6% of time when present
- Phage (with cluster) where this start called: Abigail_70 (EB), Albedo_70 (EB), Albright_69 (EB), AnnaLie_70 (EB), Armstrong_70 (EB), Arroyo_71 (EB), AvGardian_70 (EB), Avocadoman_69 (EB), BAjuniper_68 (EB), BabyDaisy_71 (EB), BabyYoda_68 (EB), Bachaco_66 (EB), BelmontSKP_70 (EB), Bernstein_70 (EB),

Brahms_70 (EB), BubbaBear_68 (EB), Buldak_70 (EB), Burritobowl_72 (EB), Cashington_69 (EB), Celaena_66 (EB), Clayda5_72 (EB), CliffHanger_80 (EB), Coltrane_70 (EB), CroZenni_71 (EB), DickRichards_68 (EB), Didgeridoo_75 (EB), DirtyBubble_69 (EB), Dismas_67 (EB), Doobus_68 (EB), Eden_72 (EB), Elva_73 (EB), Eula_69 (EB), Finalfrontier_69 (EB), FlameThrower_65 (EB), Franklin22_74 (EB), Gack_71 (EB), Icarian_72 (EB), IndyLu_71 (EB), Johnathan_70 (EB), Jovita_68 (EB), Kate33_71 (EB), Katzastrophic_67 (EB), Kenzers_69 (EB), Kieran_65 (EB), Lahqtemish_69 (EB), LimaBean_68 (EB), Lynlen_71 (EB), Nicky22_69 (EB), Olliecat_66 (EB), Phisb_72 (EB), QMacho_72 (EB), Quenya_69 (EB), Rollins_70 (EB), Rona_66 (EB), SanaSana_70 (EB), SansAfet_72 (EB), SarBear_72 (EB), Sharkboy_68 (EB), Shayna_75 (EB), Skylord_70 (EB), Slay_70 (EB), Squirrel_66 (EB), Stoor_69 (EB), Stromboli_68 (EB), SunnyD_78 (EB), Swervy_70 (EB), Teagster_77 (EB), TukTuk_70 (EB), Vitas_71 (EB), WalkingDead_71 (EB),

Start 110:

- Found in 2 of 473 (0.4%) of genes in pham
- Manual Annotations of this start: 1 of 444
- Called 100.0% of time when present
- Phage (with cluster) where this start called: Frizzle_60 (DA), Ghobes_59 (DA),

Start 178:

- Found in 1 of 473 (0.2%) of genes in pham
- Manual Annotations of this start: 1 of 444
- Called 100.0% of time when present
- Phage (with cluster) where this start called: Zipp_43 (DE4),

Summary by clusters:

There are 38 clusters represented in this pham: DN, FQ, singleton, G5, DH, UNK, DA, K3, K2, BV, K7, K6, K5, K4, K8, DP, FO, CU5, CU4, G3, G2, G1, DN1, DN2, AS3, AS2, AS1, CF, EB, G4, Y, CD, F1, F2, F3, CU1, DE4, K1,

Info for manual annotations of cluster AS1:

- Start number 88 was manually annotated 1 time for cluster AS1.
- Start number 94 was manually annotated 10 times for cluster AS1.

Info for manual annotations of cluster AS2:

- Start number 94 was manually annotated 1 time for cluster AS2.

Info for manual annotations of cluster AS3:

- Start number 85 was manually annotated 1 time for cluster AS3.
- Start number 91 was manually annotated 1 time for cluster AS3.

Info for manual annotations of cluster BV:

- Start number 76 was manually annotated 3 times for cluster BV.

Info for manual annotations of cluster CD:

- Start number 51 was manually annotated 1 time for cluster CD.
- Start number 60 was manually annotated 1 time for cluster CD.
- Start number 63 was manually annotated 1 time for cluster CD.
- Start number 64 was manually annotated 1 time for cluster CD.
- Start number 72 was manually annotated 2 times for cluster CD.

Info for manual annotations of cluster CF:

- Start number 96 was manually annotated 1 time for cluster CF.

Info for manual annotations of cluster CU1:

- Start number 85 was manually annotated 2 times for cluster CU1.

Info for manual annotations of cluster CU4:

- Start number 85 was manually annotated 1 time for cluster CU4.

Info for manual annotations of cluster CU5:

- Start number 85 was manually annotated 1 time for cluster CU5.

Info for manual annotations of cluster DA:

- Start number 68 was manually annotated 1 time for cluster DA.
- Start number 79 was manually annotated 1 time for cluster DA.
- Start number 110 was manually annotated 1 time for cluster DA.

Info for manual annotations of cluster DE4:

- Start number 178 was manually annotated 1 time for cluster DE4.

Info for manual annotations of cluster DH:

- Start number 84 was manually annotated 2 times for cluster DH.
- Start number 86 was manually annotated 1 time for cluster DH.

Info for manual annotations of cluster DN:

- Start number 87 was manually annotated 4 times for cluster DN.

Info for manual annotations of cluster DN1:

- Start number 87 was manually annotated 15 times for cluster DN1.

Info for manual annotations of cluster DN2:

- Start number 87 was manually annotated 2 times for cluster DN2.

Info for manual annotations of cluster DP:

- Start number 96 was manually annotated 5 times for cluster DP.

Info for manual annotations of cluster EB:

- Start number 98 was manually annotated 60 times for cluster EB.

Info for manual annotations of cluster F1:

- Start number 67 was manually annotated 1 time for cluster F1.
- Start number 86 was manually annotated 5 times for cluster F1.
- Start number 87 was manually annotated 45 times for cluster F1.

Info for manual annotations of cluster F2:

- Start number 87 was manually annotated 7 times for cluster F2.

Info for manual annotations of cluster F3:

- Start number 87 was manually annotated 1 time for cluster F3.

Info for manual annotations of cluster FO:

- Start number 48 was manually annotated 1 time for cluster FO.
- Start number 90 was manually annotated 2 times for cluster FO.

Info for manual annotations of cluster FQ:

- Start number 95 was manually annotated 1 time for cluster FQ.

Info for manual annotations of cluster G1:

- Start number 67 was manually annotated 60 times for cluster G1.

Info for manual annotations of cluster G2:

- Start number 67 was manually annotated 3 times for cluster G2.

Info for manual annotations of cluster G3:

- Start number 67 was manually annotated 2 times for cluster G3.

Info for manual annotations of cluster G4:

- Start number 67 was manually annotated 2 times for cluster G4.

Info for manual annotations of cluster G5:

- Start number 67 was manually annotated 1 time for cluster G5.

Info for manual annotations of cluster K1:

- Start number 80 was manually annotated 7 times for cluster K1.
- Start number 82 was manually annotated 86 times for cluster K1.
- Start number 84 was manually annotated 10 times for cluster K1.

Info for manual annotations of cluster K2:

- Start number 80 was manually annotated 2 times for cluster K2.
- Start number 82 was manually annotated 8 times for cluster K2.

Info for manual annotations of cluster K3:

- Start number 84 was manually annotated 8 times for cluster K3.

Info for manual annotations of cluster K4:

- Start number 84 was manually annotated 19 times for cluster K4.

Info for manual annotations of cluster K5:

- Start number 82 was manually annotated 22 times for cluster K5.

Info for manual annotations of cluster K6:

- Start number 78 was manually annotated 1 time for cluster K6.
- Start number 80 was manually annotated 12 times for cluster K6.
- Start number 82 was manually annotated 8 times for cluster K6.

Info for manual annotations of cluster K7:

- Start number 79 was manually annotated 1 time for cluster K7.

Info for manual annotations of cluster K8:

- Start number 84 was manually annotated 1 time for cluster K8.

Info for manual annotations of cluster Y:

- Start number 71 was manually annotated 4 times for cluster Y.

Gene Information:

Gene: Abidatro_66 Start: 38766, Stop: 39044, Start Num: 94

Candidate Starts for Abidatro_66:

(38, 38640), (Start: 94 @38766 has 11 MA's),

Gene: Abigail_70 Start: 40540, Stop: 40815, Start Num: 98

Candidate Starts for Abigail_70:

(Start: 98 @40540 has 60 MA's),

Gene: ActinUp_97 Start: 59451, Stop: 59753, Start Num: 82

Candidate Starts for ActinUp_97:

(Start: 72 @59430 has 2 MA's), (Start: 82 @59451 has 124 MA's), (115, 59526), (168, 59712), (172, 59727),

Gene: Adephagia_95 Start: 59285, Stop: 59587, Start Num: 82

Candidate Starts for Adephagia_95:

(Start: 72 @59264 has 2 MA's), (Start: 82 @59285 has 124 MA's), (115, 59360), (168, 59546), (172, 59561),

Gene: Adonis_96 Start: 59670, Stop: 59972, Start Num: 82

Candidate Starts for Adonis_96:

(Start: 72 @59649 has 2 MA's), (Start: 82 @59670 has 124 MA's), (115, 59745), (168, 59931), (172, 59946),

Gene: Agent47_97 Start: 60723, Stop: 61028, Start Num: 82

Candidate Starts for Agent47_97:

(Start: 82 @60723 has 124 MA's), (131, 60891),

Gene: Ageofdapage_100 Start: 60254, Stop: 60556, Start Num: 82

Candidate Starts for Ageofdapage_100:

(Start: 72 @60233 has 2 MA's), (Start: 82 @60254 has 124 MA's), (104, 60305), (115, 60329), (168, 60515), (172, 60530),

Gene: Albedo_70 Start: 41350, Stop: 41625, Start Num: 98

Candidate Starts for Albedo_70:

(Start: 98 @41350 has 60 MA's), (140, 41536),

Gene: Albright_69 Start: 40420, Stop: 40695, Start Num: 98

Candidate Starts for Albright_69:

(Start: 98 @40420 has 60 MA's),

Gene: Alexphander_1 Start: 41, Stop: 373, Start Num: 87

Candidate Starts for Alexphander_1:

(Start: 67 @11 has 69 MA's), (Start: 87 @41 has 74 MA's), (109, 119), (130, 212), (148, 284), (167, 338), (171, 353),

Gene: AlishaPH_89 Start: 56673, Stop: 56975, Start Num: 82

Candidate Starts for AlishaPH_89:

(Start: 72 @56652 has 2 MA's), (Start: 82 @56673 has 124 MA's), (115, 56748), (168, 56934), (172, 56949),

Gene: AlleyCat_100 Start: 61692, Stop: 61997, Start Num: 82

Candidate Starts for AlleyCat_100:
(Start: 82 @61692 has 124 MA's), (126, 61830),

Gene: Amelie_77 Start: 56074, Stop: 56379, Start Num: 84
Candidate Starts for Amelie_77:
(27, 55942), (Start: 84 @56074 has 40 MA's), (115, 56149), (126, 56194), (168, 56338), (169, 56344),
(172, 56353),

Gene: Amgine_97 Start: 61886, Stop: 62176, Start Num: 82
Candidate Starts for Amgine_97:
(Start: 82 @61886 has 124 MA's), (115, 61961), (161, 62123),

Gene: Aminay_104 Start: 59192, Stop: 59479, Start Num: 79
Candidate Starts for Aminay_104:
(Start: 79 @59192 has 2 MA's), (130, 59342),

Gene: Amohndition_95 Start: 61401, Stop: 61697, Start Num: 82
Candidate Starts for Amohndition_95:
(Start: 82 @61401 has 124 MA's), (103, 61449), (115, 61476), (155, 61635), (169, 61662),

Gene: Anatole_55 Start: 34869, Stop: 35189, Start Num: 76
Candidate Starts for Anatole_55:
(5, 34596), (7, 34635), (8, 34644), (9, 34659), (20, 34725), (22, 34728), (29, 34752), (34, 34770), (44,
34800), (Start: 76 @34869 has 3 MA's), (Start: 94 @34899 has 11 MA's), (114, 34974), (163, 35172),

Gene: Anaya_99 Start: 60473, Stop: 60775, Start Num: 82
Candidate Starts for Anaya_99:
(Start: 72 @60452 has 2 MA's), (Start: 82 @60473 has 124 MA's), (115, 60548), (168, 60734), (172,
60749),

Gene: Angel_60 Start: 40665, Stop: 40991, Start Num: 67
Candidate Starts for Angel_60:
(Start: 67 @40665 has 69 MA's), (131, 40860), (151, 40938),

Gene: Angelica_95 Start: 59237, Stop: 59539, Start Num: 82
Candidate Starts for Angelica_95:
(Start: 72 @59216 has 2 MA's), (Start: 82 @59237 has 124 MA's), (115, 59312), (168, 59498), (172,
59513),

Gene: AnnaLie_70 Start: 41202, Stop: 41477, Start Num: 98
Candidate Starts for AnnaLie_70:
(Start: 98 @41202 has 60 MA's), (140, 41388),

Gene: Annihilator_61 Start: 41117, Stop: 41443, Start Num: 67
Candidate Starts for Annihilator_61:
(Start: 67 @41117 has 69 MA's), (131, 41312), (151, 41390),

Gene: Antsirabe_65 Start: 44050, Stop: 44373, Start Num: 67
Candidate Starts for Antsirabe_65:
(Start: 67 @44050 has 69 MA's), (97, 44101), (127, 44221), (128, 44224), (130, 44236),

Gene: Aoka_54 Start: 36392, Stop: 36673, Start Num: 90
Candidate Starts for Aoka_54:

(56, 36335), (Start: 90 @36392 has 2 MA's),

Gene: Apocalypse_99 Start: 59588, Stop: 59890, Start Num: 82

Candidate Starts for Apocalypse_99:

(Start: 72 @59567 has 2 MA's), (Start: 82 @59588 has 124 MA's), (115, 59663), (125, 59699), (168, 59849), (172, 59864),

Gene: Archimedes_60 Start: 44555, Stop: 44878, Start Num: 68

Candidate Starts for Archimedes_60:

(Start: 68 @44555 has 2 MA's), (Start: 85 @44582 has 5 MA's), (Start: 88 @44588 has 1 MA's), (115, 44672), (117, 44681), (157, 44852),

Gene: Armstrong_70 Start: 39580, Stop: 39855, Start Num: 98

Candidate Starts for Armstrong_70:

(17, 39382), (21, 39397), (30, 39424), (40, 39457), (55, 39505), (Start: 64 @39520 has 1 MA's), (Start: 82 @39553 has 124 MA's), (Start: 98 @39580 has 60 MA's),

Gene: Aroostook_62 Start: 41127, Stop: 41453, Start Num: 67

Candidate Starts for Aroostook_62:

(Start: 67 @41127 has 69 MA's), (131, 41322), (151, 41400),

Gene: Arroyo_71 Start: 41666, Stop: 41941, Start Num: 98

Candidate Starts for Arroyo_71:

(Start: 98 @41666 has 60 MA's), (140, 41852),

Gene: Asapag_1 Start: 39, Stop: 371, Start Num: 87

Candidate Starts for Asapag_1:

(66, 9), (Start: 71 @15 has 4 MA's), (77, 27), (Start: 87 @39 has 74 MA's), (115, 141), (116, 144), (137, 234), (145, 264), (148, 282), (171, 351),

Gene: Asayake_97 Start: 59544, Stop: 59846, Start Num: 82

Candidate Starts for Asayake_97:

(Start: 72 @59523 has 2 MA's), (Start: 82 @59544 has 124 MA's), (115, 59619), (168, 59805), (172, 59820),

Gene: Atiba_97 Start: 59195, Stop: 59497, Start Num: 82

Candidate Starts for Atiba_97:

(Start: 72 @59174 has 2 MA's), (Start: 82 @59195 has 124 MA's), (115, 59270), (168, 59456), (172, 59471),

Gene: AuntGwenStacy_132 Start: 74981, Stop: 75304, Start Num: 71

Candidate Starts for AuntGwenStacy_132:

(Start: 71 @74981 has 4 MA's), (121, 75131), (139, 75212), (146, 75236), (147, 75248),

Gene: AvGardian_70 Start: 41184, Stop: 41459, Start Num: 98

Candidate Starts for AvGardian_70:

(Start: 98 @41184 has 60 MA's), (132, 41334), (140, 41370),

Gene: Avani_1 Start: 38, Stop: 370, Start Num: 87

Candidate Starts for Avani_1:

(Start: 67 @11 has 69 MA's), (Start: 87 @38 has 74 MA's), (109, 116), (116, 143), (137, 233), (145, 263), (148, 281), (166, 326), (171, 350),

Gene: Avocado_67 Start: 44700, Stop: 45026, Start Num: 67
Candidate Starts for Avocado_67:
(Start: 67 @44700 has 69 MA's), (97, 44754),

Gene: Avocadoman_69 Start: 40737, Stop: 41012, Start Num: 98
Candidate Starts for Avocadoman_69:
(Start: 98 @40737 has 60 MA's),

Gene: Avrafan_61 Start: 41125, Stop: 41451, Start Num: 67
Candidate Starts for Avrafan_61:
(Start: 67 @41125 has 69 MA's), (131, 41320), (151, 41398),

Gene: Awesomesauce_1 Start: 42, Stop: 374, Start Num: 87
Candidate Starts for Awesomesauce_1:
(66, 9), (73, 15), (Start: 87 @42 has 74 MA's), (106, 111), (109, 120), (130, 213), (137, 237), (145, 267), (148, 285), (166, 330), (167, 339), (171, 354),

Gene: AzulaCat_61 Start: 41125, Stop: 41451, Start Num: 67
Candidate Starts for AzulaCat_61:
(Start: 67 @41125 has 69 MA's), (131, 41320), (151, 41398),

Gene: B3_57 Start: 35532, Stop: 35852, Start Num: 76
Candidate Starts for B3_57:
(5, 35259), (7, 35298), (8, 35307), (9, 35322), (20, 35388), (22, 35391), (29, 35415), (34, 35433), (44, 35463), (Start: 76 @35532 has 3 MA's), (Start: 94 @35562 has 11 MA's), (114, 35637), (163, 35835),

Gene: BAjuniper_68 Start: 41633, Stop: 41908, Start Num: 98
Candidate Starts for BAjuniper_68:
(46, 41528), (55, 41558), (Start: 64 @41573 has 1 MA's), (Start: 82 @41606 has 124 MA's), (Start: 98 @41633 has 60 MA's), (105, 41666), (140, 41819),

Gene: BEEST_96 Start: 59545, Stop: 59847, Start Num: 82
Candidate Starts for BEEST_96:
(Start: 72 @59524 has 2 MA's), (Start: 82 @59545 has 124 MA's), (115, 59620), (168, 59806), (172, 59821),

Gene: BENtherdunthat_1 Start: 39, Stop: 371, Start Num: 87
Candidate Starts for BENtherdunthat_1:
(66, 9), (Start: 71 @15 has 4 MA's), (77, 27), (Start: 87 @39 has 74 MA's), (115, 141), (116, 144), (137, 234), (145, 264), (148, 282), (171, 351),

Gene: BFK20_ORF55 Start: 42590, Stop: 42880, Start Num: 93
Candidate Starts for BFK20_ORF55:
(75, 42557), (Start: 84 @42575 has 40 MA's), (93, 42590), (100, 42617), (115, 42674), (133, 42761), (153, 42845),

Gene: BGlluviae_96 Start: 58947, Stop: 59249, Start Num: 82
Candidate Starts for BGlluviae_96:
(Start: 72 @58926 has 2 MA's), (Start: 82 @58947 has 124 MA's), (115, 59022), (168, 59208), (172, 59223),

Gene: BPs_62 Start: 41125, Stop: 41451, Start Num: 67
Candidate Starts for BPs_62:

(Start: 67 @41125 has 69 MA's), (131, 41320), (151, 41398),

Gene: BQuat_61 Start: 41117, Stop: 41443, Start Num: 67

Candidate Starts for BQuat_61:

(Start: 67 @41117 has 69 MA's), (131, 41312), (151, 41390),

Gene: BabyDaisy_71 Start: 41763, Stop: 42038, Start Num: 98

Candidate Starts for BabyDaisy_71:

(Start: 48 @41664 has 1 MA's), (55, 41688), (Start: 64 @41703 has 1 MA's), (Start: 82 @41736 has 124 MA's), (92, 41751), (Start: 98 @41763 has 60 MA's),

Gene: BabyYoda_68 Start: 41093, Stop: 41368, Start Num: 98

Candidate Starts for BabyYoda_68:

(Start: 98 @41093 has 60 MA's), (105, 41126), (140, 41279), (142, 41282),

Gene: Bachaco_66 Start: 42043, Stop: 42318, Start Num: 98

Candidate Starts for Bachaco_66:

(25, 41878), (28, 41887), (30, 41890), (46, 41938), (55, 41968), (Start: 64 @41983 has 1 MA's), (Start: 82 @42016 has 124 MA's), (Start: 98 @42043 has 60 MA's), (140, 42229), (162, 42301),

Gene: BaghaKamala_96 Start: 58771, Stop: 59073, Start Num: 82

Candidate Starts for BaghaKamala_96:

(Start: 72 @58750 has 2 MA's), (Start: 82 @58771 has 124 MA's), (115, 58846), (168, 59032), (172, 59047),

Gene: Banquo_63 Start: 39126, Stop: 39422, Start Num: 85

Candidate Starts for Banquo_63:

(Start: 60 @39084 has 1 MA's), (Start: 85 @39126 has 5 MA's), (101, 39168), (151, 39384),

Gene: Barkley26_59 Start: 40570, Stop: 40896, Start Num: 67

Candidate Starts for Barkley26_59:

(Start: 67 @40570 has 69 MA's),

Gene: BarrelRoll_96 Start: 59311, Stop: 59613, Start Num: 82

Candidate Starts for BarrelRoll_96:

(Start: 72 @59290 has 2 MA's), (Start: 82 @59311 has 124 MA's), (115, 59386), (168, 59572), (172, 59587),

Gene: Basilisk_66 Start: 38281, Stop: 38571, Start Num: 88

Candidate Starts for Basilisk_66:

(40, 38188), (54, 38218), (Start: 88 @38281 has 1 MA's), (Start: 94 @38293 has 11 MA's),

Gene: Beakin_1 Start: 41, Stop: 373, Start Num: 87

Candidate Starts for Beakin_1:

(Start: 67 @11 has 69 MA's), (Start: 87 @41 has 74 MA's), (109, 119), (130, 212), (148, 284), (167, 338), (171, 353),

Gene: Beezoo_100 Start: 60133, Stop: 60435, Start Num: 82

Candidate Starts for Beezoo_100:

(Start: 72 @60112 has 2 MA's), (Start: 82 @60133 has 124 MA's), (115, 60208), (168, 60394), (172, 60409),

Gene: Bella96_98 Start: 60366, Stop: 60668, Start Num: 82

Candidate Starts for Bella96_98:

(Start: 72 @60345 has 2 MA's), (Start: 82 @60366 has 124 MA's), (115, 60441), (168, 60627),

Gene: Belladonna_97 Start: 59347, Stop: 59649, Start Num: 82

Candidate Starts for Belladonna_97:

(Start: 72 @59326 has 2 MA's), (Start: 82 @59347 has 124 MA's), (115, 59422), (168, 59608), (172, 59623),

Gene: BelmontSKP_70 Start: 41202, Stop: 41477, Start Num: 98

Candidate Starts for BelmontSKP_70:

(Start: 98 @41202 has 60 MA's), (140, 41388),

Gene: Bernstein_70 Start: 39578, Stop: 39853, Start Num: 98

Candidate Starts for Bernstein_70:

(17, 39380), (21, 39395), (30, 39422), (40, 39455), (55, 39503), (Start: 64 @39518 has 1 MA's), (Start: 82 @39551 has 124 MA's), (Start: 98 @39578 has 60 MA's),

Gene: BigPhil_1 Start: 41, Stop: 373, Start Num: 87

Candidate Starts for BigPhil_1:

(Start: 67 @11 has 69 MA's), (Start: 87 @41 has 74 MA's), (109, 119), (130, 212), (148, 284), (167, 338), (171, 353),

Gene: Biglebops_77 Start: 56089, Stop: 56394, Start Num: 84

Candidate Starts for Biglebops_77:

(27, 55957), (Start: 84 @56089 has 40 MA's), (115, 56164), (126, 56209), (168, 56353), (169, 56359), (172, 56368),

Gene: Bipper_136 Start: 77103, Stop: 77429, Start Num: 71

Candidate Starts for Bipper_136:

(Start: 71 @77103 has 4 MA's), (112, 77217), (115, 77229), (131, 77304), (146, 77361), (147, 77373),

Gene: Blizzard_97 Start: 59544, Stop: 59846, Start Num: 82

Candidate Starts for Blizzard_97:

(Start: 72 @59523 has 2 MA's), (Start: 82 @59544 has 124 MA's), (115, 59619), (168, 59805), (172, 59820),

Gene: Bobi_1 Start: 41, Stop: 373, Start Num: 87

Candidate Starts for Bobi_1:

(Start: 67 @11 has 69 MA's), (Start: 87 @41 has 74 MA's), (109, 119), (130, 212), (148, 284), (167, 338), (171, 353),

Gene: Boiiii_97 Start: 59546, Stop: 59848, Start Num: 82

Candidate Starts for Boiiii_97:

(Start: 72 @59525 has 2 MA's), (Start: 82 @59546 has 124 MA's), (115, 59621), (168, 59807), (172, 59822),

Gene: Boilgate_83 Start: 56925, Stop: 57236, Start Num: 84

Candidate Starts for Boilgate_83:

(Start: 84 @56925 has 40 MA's), (172, 57207),

Gene: Boomer_1 Start: 41, Stop: 373, Start Num: 87

Candidate Starts for Boomer_1:

(Start: 67 @11 has 69 MA's), (Start: 87 @41 has 74 MA's), (109, 119), (130, 212), (148, 284), (167, 338), (171, 353),

Gene: BoostSeason_94 Start: 57637, Stop: 57918, Start Num: 80
Candidate Starts for BoostSeason_94:
(Start: 80 @57637 has 21 MA's), (Start: 82 @57640 has 124 MA's), (172, 57898),

Gene: Brahms_70 Start: 39480, Stop: 39755, Start Num: 98
Candidate Starts for Brahms_70:
(17, 39282), (21, 39297), (30, 39324), (40, 39357), (55, 39405), (Start: 64 @39420 has 1 MA's), (Start: 82 @39453 has 124 MA's), (Start: 98 @39480 has 60 MA's),

Gene: BruceB_62 Start: 41125, Stop: 41451, Start Num: 67
Candidate Starts for BruceB_62:
(Start: 67 @41125 has 69 MA's), (131, 41320), (151, 41398),

Gene: Bryler_94 Start: 57308, Stop: 57616, Start Num: 80
Candidate Starts for Bryler_94:
(Start: 80 @57308 has 21 MA's), (115, 57383), (172, 57590),

Gene: Brynnie_64 Start: 38238, Stop: 38516, Start Num: 94
Candidate Starts for Brynnie_64:
(Start: 88 @38226 has 1 MA's), (Start: 94 @38238 has 11 MA's),

Gene: BubbaBear_68 Start: 41351, Stop: 41626, Start Num: 98
Candidate Starts for BubbaBear_68:
(Start: 98 @41351 has 60 MA's),

Gene: Budski_1 Start: 39, Stop: 371, Start Num: 87
Candidate Starts for Budski_1:
(66, 9), (Start: 71 @15 has 4 MA's), (Start: 87 @39 has 74 MA's), (109, 117), (115, 141), (137, 234), (148, 282), (161, 318), (171, 351),

Gene: Buldak_70 Start: 39158, Stop: 39433, Start Num: 98
Candidate Starts for Buldak_70:
(Start: 98 @39158 has 60 MA's), (140, 39344),

Gene: Burritobowl_72 Start: 40954, Stop: 41229, Start Num: 98
Candidate Starts for Burritobowl_72:
(Start: 98 @40954 has 60 MA's),

Gene: BuzzLyseyear_1 Start: 40, Stop: 372, Start Num: 86
Candidate Starts for BuzzLyseyear_1:
(65, 7), (69, 13), (Start: 86 @40 has 6 MA's), (109, 118), (130, 211), (148, 283), (167, 337), (171, 352),

Gene: CLED96_61 Start: 40680, Stop: 41006, Start Num: 67
Candidate Starts for CLED96_61:
(Start: 67 @40680 has 69 MA's), (131, 40875), (151, 40953),

Gene: CREW_95 Start: 59346, Stop: 59648, Start Num: 82
Candidate Starts for CREW_95:
(Start: 72 @59325 has 2 MA's), (Start: 82 @59346 has 124 MA's), (115, 59421), (168, 59607), (172, 59622),

Gene: Cain_102 Start: 60455, Stop: 60763, Start Num: 80
Candidate Starts for Cain_102:
(Start: 80 @60455 has 21 MA's), (115, 60530), (172, 60737),

Gene: Cambiare_66 Start: 44472, Stop: 44798, Start Num: 67
Candidate Starts for Cambiare_66:
(Start: 67 @44472 has 69 MA's), (97, 44526), (127, 44646),

Gene: Camri_62 Start: 41125, Stop: 41451, Start Num: 67
Candidate Starts for Camri_62:
(Start: 67 @41125 has 69 MA's), (131, 41320), (151, 41398),

Gene: Capricorn_97 Start: 59347, Stop: 59649, Start Num: 82
Candidate Starts for Capricorn_97:
(Start: 72 @59326 has 2 MA's), (Start: 82 @59347 has 124 MA's), (115, 59422), (168, 59608), (172, 59623),

Gene: CaseJules_100 Start: 59544, Stop: 59846, Start Num: 82
Candidate Starts for CaseJules_100:
(Start: 72 @59523 has 2 MA's), (Start: 82 @59544 has 124 MA's), (115, 59619), (168, 59805), (172, 59820),

Gene: Cashington_69 Start: 41137, Stop: 41412, Start Num: 98
Candidate Starts for Cashington_69:
(55, 41062), (Start: 64 @41077 has 1 MA's), (Start: 80 @41107 has 21 MA's), (Start: 82 @41110 has 124 MA's), (Start: 98 @41137 has 60 MA's), (140, 41323),

Gene: CassieYates_62 Start: 41125, Stop: 41451, Start Num: 67
Candidate Starts for CassieYates_62:
(Start: 67 @41125 has 69 MA's), (131, 41320), (151, 41398),

Gene: Catfish_64 Start: 41148, Stop: 41444, Start Num: 85
Candidate Starts for Catfish_64:
(13, 40959), (14, 40968), (57, 41106), (Start: 85 @41148 has 5 MA's), (113, 41235), (115, 41244), (131, 41319),

Gene: Cedasite_62 Start: 41125, Stop: 41451, Start Num: 67
Candidate Starts for Cedasite_62:
(Start: 67 @41125 has 69 MA's), (131, 41320), (151, 41398),

Gene: Celaena_66 Start: 41809, Stop: 42084, Start Num: 98
Candidate Starts for Celaena_66:
(25, 41641), (28, 41650), (30, 41653), (46, 41701), (55, 41731), (Start: 98 @41809 has 60 MA's), (140, 41995), (162, 42067),

Gene: Cerasum_1 Start: 41, Stop: 373, Start Num: 87
Candidate Starts for Cerasum_1:
(Start: 67 @11 has 69 MA's), (Start: 87 @41 has 74 MA's), (109, 119), (130, 212), (148, 284), (167, 338), (171, 353),

Gene: Chance64_62 Start: 41127, Stop: 41453, Start Num: 67
Candidate Starts for Chance64_62:

(Start: 67 @41127 has 69 MA's), (131, 41322), (151, 41400),

Gene: Chancellor_94 Start: 56785, Stop: 57090, Start Num: 84

Candidate Starts for Chancellor_94:

(Start: 84 @56785 has 40 MA's), (172, 57064),

Gene: Che9d_1 Start: 48, Stop: 380, Start Num: 87

Candidate Starts for Che9d_1:

(Start: 67 @21 has 69 MA's), (Start: 87 @48 has 74 MA's), (109, 126), (116, 153), (137, 243), (145, 273), (148, 291), (166, 336), (171, 360),

Gene: CheeseTouch_1 Start: 39, Stop: 371, Start Num: 87

Candidate Starts for CheeseTouch_1:

(66, 9), (Start: 71 @15 has 4 MA's), (Start: 87 @39 has 74 MA's), (109, 117), (115, 141), (137, 234), (148, 282), (161, 318), (171, 351),

Gene: CheetoDust_96 Start: 58941, Stop: 59243, Start Num: 82

Candidate Starts for CheetoDust_96:

(Start: 72 @58920 has 2 MA's), (Start: 82 @58941 has 124 MA's), (115, 59016), (168, 59202), (172, 59217),

Gene: Cheetobro_92 Start: 56341, Stop: 56646, Start Num: 84

Candidate Starts for Cheetobro_92:

(Start: 84 @56341 has 40 MA's), (172, 56620),

Gene: Cherrybomb426_61 Start: 40680, Stop: 41006, Start Num: 67

Candidate Starts for Cherrybomb426_61:

(Start: 67 @40680 has 69 MA's), (131, 40875), (151, 40953),

Gene: Chickaboom_66 Start: 38402, Stop: 38680, Start Num: 94

Candidate Starts for Chickaboom_66:

(Start: 88 @38390 has 1 MA's), (Start: 94 @38402 has 11 MA's),

Gene: ChickenDinner_1 Start: 42, Stop: 374, Start Num: 87

Candidate Starts for ChickenDinner_1:

(66, 9), (73, 15), (Start: 87 @42 has 74 MA's), (109, 120), (130, 213), (137, 237), (148, 285), (167, 339), (171, 354),

Gene: Chris_101 Start: 61722, Stop: 62015, Start Num: 80

Candidate Starts for Chris_101:

(Start: 80 @61722 has 21 MA's), (143, 61914), (146, 61923), (164, 61971), (173, 62001),

Gene: Clayda5_72 Start: 39546, Stop: 39821, Start Num: 98

Candidate Starts for Clayda5_72:

(17, 39348), (21, 39363), (30, 39390), (40, 39423), (55, 39471), (Start: 64 @39486 has 1 MA's), (Start: 82 @39519 has 124 MA's), (Start: 98 @39546 has 60 MA's),

Gene: CliffHanger_80 Start: 40817, Stop: 41092, Start Num: 98

Candidate Starts for CliffHanger_80:

(Start: 98 @40817 has 60 MA's), (105, 40850), (140, 41003), (142, 41006),

Gene: Coco12_1 Start: 41, Stop: 373, Start Num: 87

Candidate Starts for Coco12_1:

(Start: 67 @11 has 69 MA's), (Start: 87 @41 has 74 MA's), (109, 119), (130, 212), (148, 284), (167, 338), (171, 353),

Gene: CocoCinnamon_59 Start: 36037, Stop: 36318, Start Num: 91

Candidate Starts for CocoCinnamon_59:

(Start: 80 @36019 has 21 MA's), (Start: 91 @36037 has 1 MA's), (111, 36106),

Gene: Coleslaw_61 Start: 41117, Stop: 41443, Start Num: 67

Candidate Starts for Coleslaw_61:

(Start: 67 @41117 has 69 MA's), (131, 41312), (151, 41390),

Gene: Collard_95 Start: 60975, Stop: 61280, Start Num: 82

Candidate Starts for Collard_95:

(Start: 82 @60975 has 124 MA's), (131, 61143),

Gene: Coltrane_70 Start: 39480, Stop: 39755, Start Num: 98

Candidate Starts for Coltrane_70:

(17, 39282), (21, 39297), (30, 39324), (40, 39357), (55, 39405), (Start: 64 @39420 has 1 MA's), (Start: 82 @39453 has 124 MA's), (Start: 98 @39480 has 60 MA's),

Gene: Cornucopia_1 Start: 41, Stop: 373, Start Num: 87

Candidate Starts for Cornucopia_1:

(Start: 67 @11 has 69 MA's), (Start: 87 @41 has 74 MA's), (102, 86), (109, 119), (128, 200), (137, 236), (148, 284), (166, 329), (167, 338), (171, 353),

Gene: Cracklewink_136 Start: 76262, Stop: 76588, Start Num: 71

Candidate Starts for Cracklewink_136:

(10, 76067), (23, 76136), (Start: 71 @76262 has 4 MA's), (112, 76376), (115, 76388), (131, 76463), (146, 76520), (147, 76532),

Gene: Crespo_61 Start: 41126, Stop: 41452, Start Num: 67

Candidate Starts for Crespo_61:

(Start: 67 @41126 has 69 MA's), (131, 41321), (151, 41399),

Gene: CrimD_96 Start: 59439, Stop: 59741, Start Num: 82

Candidate Starts for CrimD_96:

(Start: 72 @59418 has 2 MA's), (Start: 82 @59439 has 124 MA's), (115, 59514), (168, 59700), (172, 59715),

Gene: CroZenni_71 Start: 41008, Stop: 41283, Start Num: 98

Candidate Starts for CroZenni_71:

(Start: 98 @41008 has 60 MA's),

Gene: Curiosium_104 Start: 60864, Stop: 61154, Start Num: 84

Candidate Starts for Curiosium_104:

(Start: 84 @60864 has 40 MA's),

Gene: DMoney_61 Start: 41104, Stop: 41430, Start Num: 67

Candidate Starts for DMoney_61:

(Start: 67 @41104 has 69 MA's), (131, 41299), (151, 41377),

Gene: DNAIII_0059 Start: 38754, Stop: 39080, Start Num: 67

Candidate Starts for DNAIII_0059:

(Start: 67 @38754 has 69 MA's), (131, 38949), (151, 39027),

Gene: DaWorst_1 Start: 41, Stop: 373, Start Num: 87

Candidate Starts for DaWorst_1:

(Start: 67 @11 has 69 MA's), (Start: 87 @41 has 74 MA's), (109, 119), (130, 212), (148, 284), (167, 338), (171, 353),

Gene: Dadosky_100 Start: 61693, Stop: 61998, Start Num: 82

Candidate Starts for Dadosky_100:

(Start: 82 @61693 has 124 MA's), (126, 61831),

Gene: Dalmuri_97 Start: 59347, Stop: 59649, Start Num: 82

Candidate Starts for Dalmuri_97:

(Start: 72 @59326 has 2 MA's), (Start: 82 @59347 has 124 MA's), (115, 59422), (168, 59608), (172, 59623),

Gene: Darionha_62 Start: 41125, Stop: 41451, Start Num: 67

Candidate Starts for Darionha_62:

(Start: 67 @41125 has 69 MA's), (131, 41320), (151, 41398),

Gene: DarthP_95 Start: 61234, Stop: 61530, Start Num: 82

Candidate Starts for DarthP_95:

(Start: 82 @61234 has 124 MA's), (103, 61282), (115, 61309), (155, 61468), (169, 61495),

Gene: Deby_96 Start: 60102, Stop: 60404, Start Num: 82

Candidate Starts for Deby_96:

(Start: 72 @60081 has 2 MA's), (Start: 82 @60102 has 124 MA's), (115, 60177), (168, 60363), (172, 60378),

Gene: Demsculpinboyz_1 Start: 38, Stop: 370, Start Num: 87

Candidate Starts for Demsculpinboyz_1:

(Start: 67 @11 has 69 MA's), (Start: 87 @38 has 74 MA's), (109, 116), (116, 143), (137, 233), (145, 263), (148, 281), (166, 326), (171, 350),

Gene: Devera_103 Start: 60259, Stop: 60561, Start Num: 82

Candidate Starts for Devera_103:

(Start: 72 @60238 has 2 MA's), (Start: 82 @60259 has 124 MA's), (104, 60310), (115, 60334), (168, 60520), (172, 60535),

Gene: DickRichards_68 Start: 40877, Stop: 41152, Start Num: 98

Candidate Starts for DickRichards_68:

(Start: 98 @40877 has 60 MA's),

Gene: Didgeridoo_75 Start: 42192, Stop: 42467, Start Num: 98

Candidate Starts for Didgeridoo_75:

(23, 42015), (39, 42066), (55, 42117), (Start: 64 @42132 has 1 MA's), (Start: 82 @42165 has 124 MA's), (92, 42180), (Start: 98 @42192 has 60 MA's),

Gene: DirtMcgirt_1 Start: 41, Stop: 373, Start Num: 87

Candidate Starts for DirtMcgirt_1:

(Start: 67 @11 has 69 MA's), (Start: 87 @41 has 74 MA's), (109, 119), (130, 212), (148, 284), (167, 338), (171, 353),

Gene: DirtyBubble_69 Start: 41228, Stop: 41503, Start Num: 98

Candidate Starts for DirtyBubble_69:

(Start: 98 @41228 has 60 MA's), (140, 41414), (142, 41417),

Gene: DismalFunk_94 Start: 57690, Stop: 57968, Start Num: 82

Candidate Starts for DismalFunk_94:

(Start: 80 @57687 has 21 MA's), (Start: 82 @57690 has 124 MA's), (131, 57840), (172, 57948),

Gene: DismalStressor_94 Start: 57690, Stop: 57968, Start Num: 82

Candidate Starts for DismalStressor_94:

(Start: 80 @57687 has 21 MA's), (Start: 82 @57690 has 124 MA's), (131, 57840), (172, 57948),

Gene: Dismas_67 Start: 41256, Stop: 41531, Start Num: 98

Candidate Starts for Dismas_67:

(55, 41181), (Start: 98 @41256 has 60 MA's), (140, 41442), (147, 41472),

Gene: DocMcStuffins_1 Start: 42, Stop: 374, Start Num: 87

Candidate Starts for DocMcStuffins_1:

(66, 9), (73, 15), (Start: 87 @42 has 74 MA's), (109, 120), (130, 213), (137, 237), (148, 285), (167, 339), (171, 354),

Gene: Dole_99 Start: 60262, Stop: 60564, Start Num: 82

Candidate Starts for Dole_99:

(Start: 72 @60241 has 2 MA's), (Start: 82 @60262 has 124 MA's), (104, 60313), (115, 60337), (168, 60523), (172, 60538),

Gene: Doobus_68 Start: 40732, Stop: 41007, Start Num: 98

Candidate Starts for Doobus_68:

(Start: 98 @40732 has 60 MA's),

Gene: DosHalletts_1 Start: 41, Stop: 373, Start Num: 87

Candidate Starts for DosHalletts_1:

(Start: 67 @11 has 69 MA's), (Start: 87 @41 has 74 MA's), (109, 119), (130, 212), (148, 284), (167, 338), (171, 353),

Gene: DrHayes_98 Start: 60168, Stop: 60470, Start Num: 82

Candidate Starts for DrHayes_98:

(Start: 72 @60147 has 2 MA's), (Start: 82 @60168 has 124 MA's), (115, 60243), (168, 60429), (172, 60444),

Gene: Drago_1 Start: 41, Stop: 373, Start Num: 87

Candidate Starts for Drago_1:

(Start: 67 @11 has 69 MA's), (Start: 87 @41 has 74 MA's), (109, 119), (130, 212), (148, 284), (167, 338), (171, 353),

Gene: Durfee_97 Start: 59544, Stop: 59846, Start Num: 82

Candidate Starts for Durfee_97:

(Start: 72 @59523 has 2 MA's), (Start: 82 @59544 has 124 MA's), (115, 59619), (168, 59805), (172, 59820),

Gene: E1_55 Start: 34794, Stop: 35114, Start Num: 76

Candidate Starts for E1_55:

(5, 34521), (7, 34560), (8, 34569), (9, 34584), (20, 34650), (22, 34653), (29, 34677), (34, 34695), (44, 34725), (Start: 76 @34794 has 3 MA's), (Start: 94 @34824 has 11 MA's), (114, 34899), (163, 35097),

Gene: ECartman_60 Start: 41125, Stop: 41451, Start Num: 67

Candidate Starts for ECartman_60:

(Start: 67 @41125 has 69 MA's), (131, 41320), (151, 41398),

Gene: Ecliptus_1 Start: 40, Stop: 372, Start Num: 87

Candidate Starts for Ecliptus_1:

(69, 13), (Start: 87 @40 has 74 MA's), (116, 145), (128, 199), (129, 208), (130, 211), (132, 220), (137, 235), (145, 265), (161, 319), (171, 352),

Gene: Eden_72 Start: 40483, Stop: 40758, Start Num: 98

Candidate Starts for Eden_72:

(11, 40246), (15, 40276), (16, 40279), (19, 40294), (28, 40324), (30, 40327), (47, 40381), (65, 40423), (Start: 98 @40483 has 60 MA's), (140, 40669), (142, 40672), (162, 40741),

Gene: Edugator_92 Start: 62924, Stop: 63229, Start Num: 82

Candidate Starts for Edugator_92:

(Start: 82 @62924 has 124 MA's), (126, 63062), (131, 63092),

Gene: Eesa_65 Start: 39439, Stop: 39717, Start Num: 94

Candidate Starts for Eesa_65:

(Start: 94 @39439 has 11 MA's), (165, 39709),

Gene: Efra2_104 Start: 60929, Stop: 61216, Start Num: 82

Candidate Starts for Efra2_104:

(Start: 82 @60929 has 124 MA's), (158, 61166), (169, 61181), (170, 61184),

Gene: Ekdilam_92 Start: 61413, Stop: 61709, Start Num: 82

Candidate Starts for Ekdilam_92:

(3, 61107), (Start: 82 @61413 has 124 MA's), (103, 61461), (115, 61488), (155, 61647), (169, 61674),

Gene: Ellie_96 Start: 61595, Stop: 61885, Start Num: 82

Candidate Starts for Ellie_96:

(Start: 82 @61595 has 124 MA's), (115, 61670), (161, 61832),

Gene: Elva_73 Start: 41675, Stop: 41950, Start Num: 98

Candidate Starts for Elva_73:

(Start: 98 @41675 has 60 MA's), (140, 41861), (142, 41864),

Gene: Emerson_101 Start: 59949, Stop: 60251, Start Num: 82

Candidate Starts for Emerson_101:

(Start: 72 @59928 has 2 MA's), (Start: 82 @59949 has 124 MA's), (115, 60024), (168, 60210), (172, 60225),

Gene: Enby_1 Start: 41, Stop: 373, Start Num: 87

Candidate Starts for Enby_1:

(Start: 67 @11 has 69 MA's), (Start: 87 @41 has 74 MA's), (109, 119), (130, 212), (148, 284), (167, 338), (171, 353),

Gene: Enkosi_79 Start: 58687, Stop: 58992, Start Num: 84

Candidate Starts for Enkosi_79:

(27, 58555), (Start: 84 @58687 has 40 MA's), (115, 58762), (126, 58807), (168, 58951), (169, 58957), (172, 58966),

Gene: Eponine_96 Start: 57765, Stop: 58070, Start Num: 84
Candidate Starts for Eponine_96:
(Start: 84 @57765 has 40 MA's), (117, 57870), (172, 58044),

Gene: Eula_69 Start: 40916, Stop: 41191, Start Num: 98
Candidate Starts for Eula_69:
(Start: 98 @40916 has 60 MA's), (140, 41102),

Gene: Fefferhead_98 Start: 61016, Stop: 61306, Start Num: 82
Candidate Starts for Fefferhead_98:
(Start: 82 @61016 has 124 MA's), (115, 61091), (161, 61253),

Gene: Feyre_98 Start: 63125, Stop: 63430, Start Num: 82
Candidate Starts for Feyre_98:
(Start: 82 @63125 has 124 MA's),

Gene: Finalfrontier_69 Start: 41583, Stop: 41858, Start Num: 98
Candidate Starts for Finalfrontier_69:
(Start: 98 @41583 has 60 MA's), (140, 41769),

Gene: Findley_94 Start: 57711, Stop: 57989, Start Num: 82
Candidate Starts for Findley_94:
(Start: 80 @57708 has 21 MA's), (Start: 82 @57711 has 124 MA's), (131, 57861), (172, 57969),

Gene: Fionnbharth_94 Start: 57163, Stop: 57468, Start Num: 84
Candidate Starts for Fionnbharth_94:
(Start: 84 @57163 has 40 MA's), (117, 57268), (172, 57442),

Gene: FlagStaff_64 Start: 43887, Stop: 44213, Start Num: 67
Candidate Starts for FlagStaff_64:
(Start: 67 @43887 has 69 MA's), (97, 43941), (127, 44061),

Gene: FlameThrower_65 Start: 40846, Stop: 41121, Start Num: 98
Candidate Starts for FlameThrower_65:
(55, 40768), (Start: 98 @40846 has 60 MA's), (140, 41032), (162, 41104),

Gene: Flathead_1 Start: 40, Stop: 372, Start Num: 87
Candidate Starts for Flathead_1:
(65, 7), (69, 13), (Start: 87 @40 has 74 MA's), (106, 109), (109, 118), (130, 211), (148, 283), (166, 328), (167, 337), (171, 352),

Gene: Frankie_1 Start: 40, Stop: 372, Start Num: 87
Candidate Starts for Frankie_1:
(65, 7), (69, 13), (Start: 87 @40 has 74 MA's), (106, 109), (109, 118), (130, 211), (148, 283), (166, 328), (167, 337), (171, 352),

Gene: Franklin22_74 Start: 40216, Stop: 40491, Start Num: 98
Candidate Starts for Franklin22_74:
(65, 40156), (Start: 98 @40216 has 60 MA's), (140, 40402), (162, 40474),

Gene: Frickyeah_1 Start: 39, Stop: 371, Start Num: 87
Candidate Starts for Frickyeah_1:
(66, 9), (Start: 71 @15 has 4 MA's), (77, 27), (Start: 87 @39 has 74 MA's), (115, 141), (116, 144),
(137, 234), (145, 264), (148, 282), (171, 351),

Gene: Frizzle_60 Start: 45090, Stop: 45314, Start Num: 110
Candidate Starts for Frizzle_60:
(Start: 85 @45018 has 5 MA's), (Start: 110 @45090 has 1 MA's), (118, 45123), (165, 45306),

Gene: Frosty24_62 Start: 41125, Stop: 41451, Start Num: 67
Candidate Starts for Frosty24_62:
(Start: 67 @41125 has 69 MA's), (131, 41320), (151, 41398),

Gene: Fryberger_144 Start: 66223, Stop: 66480, Start Num: 96
Candidate Starts for Fryberger_144:
(Start: 96 @66223 has 6 MA's), (119, 66319), (126, 66343), (131, 66373), (142, 66406),

Gene: Gack_71 Start: 40197, Stop: 40472, Start Num: 98
Candidate Starts for Gack_71:
(Start: 98 @40197 has 60 MA's), (140, 40383), (147, 40413),

Gene: Galaxy_65 Start: 37453, Stop: 37731, Start Num: 94
Candidate Starts for Galaxy_65:
(30, 37303), (38, 37327), (49, 37360), (Start: 94 @37453 has 11 MA's), (144, 37660),

Gene: Ganymede_96 Start: 59358, Stop: 59660, Start Num: 82
Candidate Starts for Ganymede_96:
(Start: 72 @59337 has 2 MA's), (Start: 82 @59358 has 124 MA's), (115, 59433), (168, 59619), (172,
59634),

Gene: Gengar_96 Start: 61193, Stop: 61498, Start Num: 82
Candidate Starts for Gengar_96:
(Start: 82 @61193 has 124 MA's),

Gene: Geraldini_97 Start: 59457, Stop: 59759, Start Num: 82
Candidate Starts for Geraldini_97:
(Start: 72 @59436 has 2 MA's), (Start: 82 @59457 has 124 MA's), (115, 59532), (168, 59718), (172,
59733),

Gene: Getalong_1 Start: 39, Stop: 371, Start Num: 87
Candidate Starts for Getalong_1:
(66, 9), (Start: 71 @15 has 4 MA's), (77, 27), (Start: 87 @39 has 74 MA's), (115, 141), (116, 144),
(137, 234), (145, 264), (148, 282), (171, 351),

Gene: Ghobes_59 Start: 45003, Stop: 45227, Start Num: 110
Candidate Starts for Ghobes_59:
(Start: 85 @44931 has 5 MA's), (Start: 110 @45003 has 1 MA's), (118, 45036), (165, 45219),

Gene: Gideon_62 Start: 41127, Stop: 41453, Start Num: 67
Candidate Starts for Gideon_62:
(Start: 67 @41127 has 69 MA's), (131, 41322), (151, 41400),

Gene: Girafales_1 Start: 41, Stop: 373, Start Num: 87

Candidate Starts for Girafales_1:

(Start: 67 @11 has 69 MA's), (Start: 87 @41 has 74 MA's), (102, 86), (106, 110), (109, 119), (128, 200), (137, 236), (148, 284), (166, 329), (167, 338), (171, 353),

Gene: GoldenAsh_60 Start: 40665, Stop: 40991, Start Num: 67

Candidate Starts for GoldenAsh_60:

(Start: 67 @40665 has 69 MA's), (131, 40860), (151, 40938),

Gene: Gomashi_61 Start: 41127, Stop: 41453, Start Num: 67

Candidate Starts for Gomashi_61:

(Start: 67 @41127 has 69 MA's), (131, 41322), (151, 41400),

Gene: Grizzly_61 Start: 40976, Stop: 41302, Start Num: 67

Candidate Starts for Grizzly_61:

(Start: 67 @40976 has 69 MA's), (131, 41171), (151, 41249),

Gene: Guanica15_103 Start: 60618, Stop: 60905, Start Num: 82

Candidate Starts for Guanica15_103:

(Start: 82 @60618 has 124 MA's), (158, 60855), (169, 60870), (170, 60873),

Gene: Guey18_149 Start: 67884, Stop: 68141, Start Num: 96

Candidate Starts for Guey18_149:

(Start: 96 @67884 has 6 MA's), (119, 67980), (126, 68004), (131, 68034), (142, 68067),

Gene: Guillsminger_96 Start: 62720, Stop: 63025, Start Num: 82

Candidate Starts for Guillsminger_96:

(Start: 82 @62720 has 124 MA's),

Gene: Halo_63 Start: 41673, Stop: 41999, Start Num: 67

Candidate Starts for Halo_63:

(Start: 67 @41673 has 69 MA's), (131, 41868), (151, 41946),

Gene: Hammy_95 Start: 61452, Stop: 61748, Start Num: 82

Candidate Starts for Hammy_95:

(Start: 82 @61452 has 124 MA's), (103, 61500), (115, 61527), (155, 61686), (169, 61713),

Gene: HedwigODU_96 Start: 59451, Stop: 59753, Start Num: 82

Candidate Starts for HedwigODU_96:

(Start: 72 @59430 has 2 MA's), (Start: 82 @59451 has 124 MA's), (115, 59526), (168, 59712), (172, 59727),

Gene: Heftyboy_96 Start: 61535, Stop: 61840, Start Num: 82

Candidate Starts for Heftyboy_96:

(Start: 82 @61535 has 124 MA's),

Gene: Hegedechwinu_1 Start: 40, Stop: 372, Start Num: 87

Candidate Starts for Hegedechwinu_1:

(65, 7), (69, 13), (Start: 87 @40 has 74 MA's), (106, 109), (109, 118), (130, 211), (148, 283), (166, 328), (167, 337), (171, 352),

Gene: Hilltopfarm_134 Start: 76128, Stop: 76451, Start Num: 71

Candidate Starts for Hilltopfarm_134:

(Start: 71 @76128 has 4 MA's), (121, 76278), (139, 76359), (146, 76383), (147, 76395),

Gene: Holliday_1 Start: 39, Stop: 371, Start Num: 87

Candidate Starts for Holliday_1:

(66, 9), (Start: 71 @15 has 4 MA's), (Start: 87 @39 has 74 MA's), (109, 117), (115, 141), (137, 234), (148, 282), (161, 318), (171, 351),

Gene: Homura_95 Start: 59347, Stop: 59649, Start Num: 82

Candidate Starts for Homura_95:

(Start: 72 @59326 has 2 MA's), (Start: 82 @59347 has 124 MA's), (115, 59422), (168, 59608), (172, 59623),

Gene: Hope_62 Start: 41125, Stop: 41451, Start Num: 67

Candidate Starts for Hope_62:

(Start: 67 @41125 has 69 MA's), (131, 41320), (151, 41398),

Gene: Horus_1 Start: 39, Stop: 371, Start Num: 87

Candidate Starts for Horus_1:

(66, 9), (Start: 71 @15 has 4 MA's), (77, 27), (Start: 87 @39 has 74 MA's), (109, 117), (115, 141), (137, 234), (145, 264), (148, 282), (171, 351),

Gene: Hotshotbaby7_62 Start: 41127, Stop: 41453, Start Num: 67

Candidate Starts for Hotshotbaby7_62:

(Start: 67 @41127 has 69 MA's), (131, 41322), (151, 41400),

Gene: Hurricane_98 Start: 60965, Stop: 61252, Start Num: 84

Candidate Starts for Hurricane_98:

(58, 60923), (Start: 68 @60938 has 2 MA's), (Start: 84 @60965 has 40 MA's), (159, 61202), (172, 61226),

Gene: Hyperbowlee_95 Start: 59544, Stop: 59846, Start Num: 82

Candidate Starts for Hyperbowlee_95:

(Start: 72 @59523 has 2 MA's), (Start: 82 @59544 has 124 MA's), (115, 59619), (168, 59805), (172, 59820),

Gene: Icarian_72 Start: 41856, Stop: 42131, Start Num: 98

Candidate Starts for Icarian_72:

(Start: 98 @41856 has 60 MA's), (134, 42021), (140, 42042), (142, 42045),

Gene: IdentityCrisis_61 Start: 37798, Stop: 38148, Start Num: 68

Candidate Starts for IdentityCrisis_61:

(Start: 68 @37798 has 2 MA's),

Gene: Illumine_100 Start: 60261, Stop: 60563, Start Num: 82

Candidate Starts for Illumine_100:

(Start: 72 @60240 has 2 MA's), (Start: 82 @60261 has 124 MA's), (104, 60312), (115, 60336), (168, 60522), (172, 60537),

Gene: IndyLu_71 Start: 41495, Stop: 41770, Start Num: 98

Candidate Starts for IndyLu_71:

(23, 41318), (39, 41369), (55, 41420), (Start: 64 @41435 has 1 MA's), (Start: 78 @41462 has 1 MA's), (Start: 82 @41468 has 124 MA's), (92, 41483), (Start: 98 @41495 has 60 MA's),

Gene: Inky_96 Start: 59347, Stop: 59649, Start Num: 82

Candidate Starts for Inky_96:

(Start: 72 @59326 has 2 MA's), (Start: 82 @59347 has 124 MA's), (115, 59422), (168, 59608), (172, 59623),

Gene: InvictusManeo_97 Start: 60727, Stop: 61032, Start Num: 82

Candidate Starts for InvictusManeo_97:

(Start: 82 @60727 has 124 MA's), (131, 60895),

Gene: JAWS_95 Start: 59388, Stop: 59690, Start Num: 82

Candidate Starts for JAWS_95:

(Start: 72 @59367 has 2 MA's), (Start: 82 @59388 has 124 MA's), (115, 59463), (168, 59649), (172, 59664),

Gene: JF1_94 Start: 57078, Stop: 57383, Start Num: 84

Candidate Starts for JF1_94:

(Start: 84 @57078 has 40 MA's), (117, 57183), (172, 57357),

Gene: Jabbawokkie_2 Start: 561, Stop: 893, Start Num: 87

Candidate Starts for Jabbawokkie_2:

(65, 528), (Start: 87 @561 has 74 MA's), (137, 756), (145, 786), (148, 804), (166, 849), (171, 873),

Gene: JalFarm20_1 Start: 41, Stop: 373, Start Num: 87

Candidate Starts for JalFarm20_1:

(Start: 67 @11 has 69 MA's), (Start: 87 @41 has 74 MA's), (109, 119), (130, 212), (148, 284), (167, 338), (171, 353),

Gene: Jamun_63 Start: 38467, Stop: 38745, Start Num: 94

Candidate Starts for Jamun_63:

(24, 38326), (62, 38413), (83, 38449), (Start: 88 @38455 has 1 MA's), (Start: 94 @38467 has 11 MA's),

Gene: Jane_63 Start: 41125, Stop: 41451, Start Num: 67

Candidate Starts for Jane_63:

(Start: 67 @41125 has 69 MA's), (131, 41320), (151, 41398),

Gene: JanetJ_52 Start: 36634, Stop: 36915, Start Num: 90

Candidate Starts for JanetJ_52:

(Start: 90 @36634 has 2 MA's),

Gene: Jarvi_96 Start: 59347, Stop: 59649, Start Num: 82

Candidate Starts for Jarvi_96:

(Start: 72 @59326 has 2 MA's), (Start: 82 @59347 has 124 MA's), (115, 59422), (168, 59608), (172, 59623),

Gene: Jayhawk_100 Start: 59371, Stop: 59673, Start Num: 82

Candidate Starts for Jayhawk_100:

(Start: 72 @59350 has 2 MA's), (Start: 82 @59371 has 124 MA's), (115, 59446), (168, 59632), (172, 59647),

Gene: Jeckyll_97 Start: 59347, Stop: 59649, Start Num: 82

Candidate Starts for Jeckyll_97:

(Start: 72 @59326 has 2 MA's), (Start: 82 @59347 has 124 MA's), (115, 59422), (168, 59608), (172, 59623),

Gene: Job42_1 Start: 41, Stop: 373, Start Num: 87

Candidate Starts for Job42_1:

(Start: 67 @11 has 69 MA's), (Start: 87 @41 has 74 MA's), (109, 119), (130, 212), (148, 284), (166, 329), (167, 338), (171, 353),

Gene: Johnathan_70 Start: 40508, Stop: 40783, Start Num: 98

Candidate Starts for Johnathan_70:

(Start: 98 @40508 has 60 MA's),

Gene: Jolene_62 Start: 41529, Stop: 41855, Start Num: 67

Candidate Starts for Jolene_62:

(Start: 67 @41529 has 69 MA's), (131, 41724), (151, 41802),

Gene: Jolie2_61 Start: 43385, Stop: 43714, Start Num: 67

Candidate Starts for Jolie2_61:

(Start: 67 @43385 has 69 MA's), (129, 43568), (151, 43655),

Gene: Jonghyun_60 Start: 41128, Stop: 41454, Start Num: 67

Candidate Starts for Jonghyun_60:

(Start: 67 @41128 has 69 MA's), (131, 41323), (151, 41401),

Gene: JorRay_63 Start: 41125, Stop: 41451, Start Num: 67

Candidate Starts for JorRay_63:

(Start: 67 @41125 has 69 MA's), (131, 41320), (151, 41398),

Gene: Jovita_68 Start: 40684, Stop: 40959, Start Num: 98

Candidate Starts for Jovita_68:

(Start: 98 @40684 has 60 MA's), (140, 40870),

Gene: Joy99_98 Start: 59476, Stop: 59778, Start Num: 82

Candidate Starts for Joy99_98:

(Start: 72 @59455 has 2 MA's), (Start: 82 @59476 has 124 MA's), (115, 59551), (168, 59737), (172, 59752),

Gene: Juice456_1 Start: 41, Stop: 373, Start Num: 87

Candidate Starts for Juice456_1:

(Start: 67 @11 has 69 MA's), (Start: 87 @41 has 74 MA's), (109, 119), (130, 212), (148, 284), (166, 329), (167, 338), (171, 353),

Gene: Juliette_96 Start: 57159, Stop: 57464, Start Num: 84

Candidate Starts for Juliette_96:

(Start: 84 @57159 has 40 MA's), (117, 57264), (172, 57438),

Gene: Kamaru_1 Start: 39, Stop: 371, Start Num: 87

Candidate Starts for Kamaru_1:

(66, 9), (Start: 71 @15 has 4 MA's), (Start: 87 @39 has 74 MA's), (109, 117), (115, 141), (137, 234), (148, 282), (161, 318), (171, 351),

Gene: Kareem_63 Start: 41125, Stop: 41451, Start Num: 67

Candidate Starts for Kareem_63:

(Start: 67 @41125 has 69 MA's), (131, 41320), (151, 41398),

Gene: Kasen3_63 Start: 41114, Stop: 41440, Start Num: 67
Candidate Starts for Kasen3_63:
(Start: 67 @41114 has 69 MA's), (131, 41309), (151, 41387),

Gene: Kate33_71 Start: 41226, Stop: 41501, Start Num: 98
Candidate Starts for Kate33_71:
(39, 41100), (55, 41151), (Start: 64 @41166 has 1 MA's), (Start: 82 @41199 has 124 MA's), (92, 41214), (Start: 98 @41226 has 60 MA's),

Gene: Katzastrophic_67 Start: 41352, Stop: 41627, Start Num: 98
Candidate Starts for Katzastrophic_67:
(25, 41187), (28, 41196), (30, 41199), (46, 41247), (55, 41277), (Start: 64 @41292 has 1 MA's), (Start: 82 @41325 has 124 MA's), (Start: 98 @41352 has 60 MA's), (140, 41538), (162, 41610),

Gene: Keelan_144 Start: 66560, Stop: 66817, Start Num: 96
Candidate Starts for Keelan_144:
(Start: 96 @66560 has 6 MA's), (119, 66656), (126, 66680), (131, 66710), (142, 66743), (158, 66803),

Gene: Kenna_1 Start: 39, Stop: 371, Start Num: 87
Candidate Starts for Kenna_1:
(66, 9), (Start: 71 @15 has 4 MA's), (77, 27), (Start: 87 @39 has 74 MA's), (109, 117), (115, 141), (116, 144), (137, 234), (145, 264), (148, 282), (171, 351),

Gene: Kenzers_69 Start: 40798, Stop: 41073, Start Num: 98
Candidate Starts for Kenzers_69:
(Start: 98 @40798 has 60 MA's), (140, 40984),

Gene: Keshu_101 Start: 60898, Stop: 61185, Start Num: 84
Candidate Starts for Keshu_101:
(33, 60787), (42, 60811), (58, 60856), (Start: 68 @60871 has 2 MA's), (Start: 84 @60898 has 40 MA's), (159, 61135), (172, 61159),

Gene: Khuang_70 Start: 39192, Stop: 39488, Start Num: 89
Candidate Starts for Khuang_70:
(89, 39192), (99, 39222), (131, 39360),

Gene: KiSi_104 Start: 62208, Stop: 62504, Start Num: 80
Candidate Starts for KiSi_104:
(Start: 80 @62208 has 21 MA's), (143, 62400), (146, 62409),

Gene: Kieran_65 Start: 41080, Stop: 41355, Start Num: 98
Candidate Starts for Kieran_65:
(55, 41005), (Start: 98 @41080 has 60 MA's), (140, 41266), (147, 41296),

Gene: Kimberlium_1 Start: 41, Stop: 373, Start Num: 87
Candidate Starts for Kimberlium_1:
(Start: 67 @11 has 69 MA's), (Start: 87 @41 has 74 MA's), (109, 119), (130, 212), (148, 284), (166, 329), (167, 338), (171, 353),

Gene: Kingsley_1 Start: 41, Stop: 373, Start Num: 87
Candidate Starts for Kingsley_1:
(Start: 67 @11 has 69 MA's), (Start: 87 @41 has 74 MA's), (109, 119), (130, 212), (148, 284), (167, 338), (171, 353),

Gene: Kratio_100 Start: 62318, Stop: 62623, Start Num: 82

Candidate Starts for Kratio_100:

(Start: 82 @62318 has 124 MA's), (131, 62486),

Gene: Kraw_95 Start: 56894, Stop: 57199, Start Num: 84

Candidate Starts for Kraw_95:

(Start: 84 @56894 has 40 MA's), (117, 56999), (172, 57173),

Gene: Krueger_101 Start: 59962, Stop: 60270, Start Num: 80

Candidate Starts for Krueger_101:

(Start: 80 @59962 has 21 MA's), (115, 60037), (172, 60244),

Gene: Lahqtemish_69 Start: 41710, Stop: 41985, Start Num: 98

Candidate Starts for Lahqtemish_69:

(45, 41602), (55, 41635), (Start: 64 @41650 has 1 MA's), (Start: 78 @41677 has 1 MA's), (Start: 82 @41683 has 124 MA's), (92, 41698), (Start: 98 @41710 has 60 MA's),

Gene: Larva_98 Start: 62571, Stop: 62876, Start Num: 82

Candidate Starts for Larva_98:

(Start: 82 @62571 has 124 MA's), (126, 62709),

Gene: LastHope_103 Start: 60575, Stop: 60865, Start Num: 84

Candidate Starts for LastHope_103:

(Start: 84 @60575 has 40 MA's), (140, 60758),

Gene: LaterM_96 Start: 59784, Stop: 60086, Start Num: 82

Candidate Starts for LaterM_96:

(Start: 72 @59763 has 2 MA's), (Start: 82 @59784 has 124 MA's), (104, 59835), (115, 59859), (168, 60045), (172, 60060),

Gene: LeMond_103 Start: 62165, Stop: 62461, Start Num: 80

Candidate Starts for LeMond_103:

(Start: 80 @62165 has 21 MA's), (143, 62357), (146, 62366),

Gene: Lemuria_64 Start: 44074, Stop: 44403, Start Num: 67

Candidate Starts for Lemuria_64:

(Start: 67 @44074 has 69 MA's), (129, 44257), (138, 44287), (151, 44344),

Gene: Leona_68 Start: 38237, Stop: 38518, Start Num: 91

Candidate Starts for Leona_68:

(Start: 91 @38237 has 1 MA's), (129, 38384), (144, 38447),

Gene: Leozinho_1 Start: 41, Stop: 373, Start Num: 87

Candidate Starts for Leozinho_1:

(Start: 67 @11 has 69 MA's), (Start: 87 @41 has 74 MA's), (109, 119), (130, 212), (148, 284), (167, 338), (171, 353),

Gene: Leroy_1 Start: 39, Stop: 371, Start Num: 87

Candidate Starts for Leroy_1:

(66, 9), (Start: 71 @15 has 4 MA's), (77, 27), (Start: 87 @39 has 74 MA's), (115, 141), (116, 144), (137, 234), (145, 264), (148, 282), (171, 351),

Gene: Leston_95 Start: 61375, Stop: 61680, Start Num: 82
Candidate Starts for Leston_95:
(Start: 82 @61375 has 124 MA's),

Gene: Liefie_59 Start: 40764, Stop: 41090, Start Num: 67
Candidate Starts for Liefie_59:
(Start: 67 @40764 has 69 MA's),

Gene: LilPharaoh_78 Start: 55802, Stop: 56107, Start Num: 84
Candidate Starts for LilPharaoh_78:
(27, 55670), (Start: 84 @55802 has 40 MA's), (115, 55877), (126, 55922), (168, 56066), (169, 56072),
(172, 56081),

Gene: LilSpotty_85 Start: 49411, Stop: 49689, Start Num: 95
Candidate Starts for LilSpotty_85:
(Start: 95 @49411 has 2 MA's), (170, 49663),

Gene: LimaBean_68 Start: 40790, Stop: 41065, Start Num: 98
Candidate Starts for LimaBean_68:
(55, 40715), (Start: 64 @40730 has 1 MA's), (Start: 80 @40760 has 21 MA's), (Start: 82 @40763 has
124 MA's), (Start: 98 @40790 has 60 MA's),

Gene: LindNT_94 Start: 59694, Stop: 59996, Start Num: 82
Candidate Starts for LindNT_94:
(Start: 72 @59673 has 2 MA's), (Start: 82 @59694 has 124 MA's), (115, 59769), (168, 59955), (172,
59970),

Gene: LitninMcQueen_1 Start: 39, Stop: 371, Start Num: 87
Candidate Starts for LitninMcQueen_1:
(66, 9), (Start: 71 @15 has 4 MA's), (Start: 87 @39 has 74 MA's), (109, 117), (115, 141), (137, 234),
(148, 282), (161, 318), (171, 351),

Gene: LittleShirley_1 Start: 41, Stop: 373, Start Num: 87
Candidate Starts for LittleShirley_1:
(Start: 67 @11 has 69 MA's), (Start: 87 @41 has 74 MA's), (109, 119), (130, 212), (137, 236), (148,
284), (167, 338), (171, 353),

Gene: LittleTokyo_73 Start: 38604, Stop: 38882, Start Num: 94
Candidate Starts for LittleTokyo_73:
(Start: 94 @38604 has 11 MA's), (140, 38796),

Gene: Llorens_96 Start: 59347, Stop: 59649, Start Num: 82
Candidate Starts for Llorens_96:
(Start: 72 @59326 has 2 MA's), (Start: 82 @59347 has 124 MA's), (115, 59422), (168, 59608), (172,
59623),

Gene: Lorde_1 Start: 41, Stop: 373, Start Num: 87
Candidate Starts for Lorde_1:
(Start: 67 @11 has 69 MA's), (Start: 87 @41 has 74 MA's), (109, 119), (130, 212), (148, 284), (167,
338), (171, 353),

Gene: LouisV14_64 Start: 43369, Stop: 43695, Start Num: 67
Candidate Starts for LouisV14_64:

(Start: 67 @43369 has 69 MA's), (131, 43564), (151, 43642),

Gene: Loviatar_114 Start: 42044, Stop: 42379, Start Num: 64

Candidate Starts for Loviatar_114:

(55, 42029), (Start: 64 @42044 has 1 MA's), (Start: 82 @42077 has 124 MA's), (Start: 98 @42104 has 60 MA's), (105, 42137), (142, 42293),

Gene: Lucky10_70 Start: 42595, Stop: 42897, Start Num: 86

Candidate Starts for Lucky10_70:

(41, 42496), (Start: 86 @42595 has 6 MA's), (143, 42802),

Gene: Lunahalos_96 Start: 59347, Stop: 59649, Start Num: 82

Candidate Starts for Lunahalos_96:

(Start: 72 @59326 has 2 MA's), (Start: 82 @59347 has 124 MA's), (115, 59422), (168, 59608), (172, 59623),

Gene: Lutum_1 Start: 39, Stop: 371, Start Num: 87

Candidate Starts for Lutum_1:

(66, 9), (Start: 71 @15 has 4 MA's), (77, 27), (Start: 87 @39 has 74 MA's), (109, 117), (115, 141), (116, 144), (137, 234), (145, 264), (148, 282), (171, 351),

Gene: Lynlen_71 Start: 40984, Stop: 41259, Start Num: 98

Candidate Starts for Lynlen_71:

(92, 40972), (Start: 98 @40984 has 60 MA's),

Gene: MOOREtheMARYer_66 Start: 43647, Stop: 43973, Start Num: 67

Candidate Starts for MOOREtheMARYer_66:

(Start: 67 @43647 has 69 MA's), (97, 43701), (127, 43821), (128, 43824),

Gene: MacnCheese_99 Start: 61214, Stop: 61501, Start Num: 84

Candidate Starts for MacnCheese_99:

(43, 61130), (58, 61172), (Start: 68 @61187 has 2 MA's), (Start: 84 @61214 has 40 MA's),

Gene: Madiba_1 Start: 40, Stop: 372, Start Num: 86

Candidate Starts for Madiba_1:

(65, 7), (69, 13), (Start: 86 @40 has 6 MA's), (109, 118), (137, 235), (148, 283), (167, 337), (171, 352),

Gene: Mahdia_60 Start: 41790, Stop: 42113, Start Num: 60

Candidate Starts for Mahdia_60:

(Start: 60 @41790 has 1 MA's), (Start: 64 @41796 has 1 MA's), (128, 41970), (131, 41988), (151, 42075),

Gene: Maja_56 Start: 36343, Stop: 36714, Start Num: 48

Candidate Starts for Maja_56:

(Start: 48 @36343 has 1 MA's), (Start: 80 @36415 has 21 MA's), (Start: 91 @36433 has 1 MA's),

Gene: Maliketh_61 Start: 41125, Stop: 41451, Start Num: 67

Candidate Starts for Maliketh_61:

(Start: 67 @41125 has 69 MA's), (131, 41320), (151, 41398),

Gene: Malisha_1 Start: 39, Stop: 371, Start Num: 87

Candidate Starts for Malisha_1:

(66, 9), (Start: 71 @15 has 4 MA's), (Start: 87 @39 has 74 MA's), (109, 117), (129, 207), (137, 234), (145, 264), (148, 282), (161, 318), (171, 351),

Gene: Malthus_95 Start: 56888, Stop: 57193, Start Num: 84

Candidate Starts for Malthus_95:

(Start: 84 @56888 has 40 MA's), (117, 56993), (172, 57167),

Gene: Marcoliusprime_92 Start: 57690, Stop: 57968, Start Num: 82

Candidate Starts for Marcoliusprime_92:

(Start: 80 @57687 has 21 MA's), (Start: 82 @57690 has 124 MA's), (131, 57840), (172, 57948),

Gene: MarkPhew_103 Start: 61805, Stop: 62098, Start Num: 80

Candidate Starts for MarkPhew_103:

(Start: 80 @61805 has 21 MA's), (115, 61880), (146, 62006), (173, 62084),

Gene: Marker_1 Start: 40, Stop: 372, Start Num: 86

Candidate Starts for Marker_1:

(65, 7), (69, 13), (Start: 86 @40 has 6 MA's), (109, 118), (130, 211), (137, 235), (148, 283), (167, 337), (171, 352),

Gene: Marmie_62 Start: 41126, Stop: 41452, Start Num: 67

Candidate Starts for Marmie_62:

(Start: 67 @41126 has 69 MA's), (131, 41321), (151, 41399),

Gene: Marshawn_96 Start: 61097, Stop: 61411, Start Num: 82

Candidate Starts for Marshawn_96:

(Start: 82 @61097 has 124 MA's), (115, 61172), (170, 61379), (172, 61385),

Gene: Mdavu_78 Start: 56078, Stop: 56383, Start Num: 84

Candidate Starts for Mdavu_78:

(27, 55946), (Start: 84 @56078 has 40 MA's), (115, 56153), (126, 56198), (168, 56342), (169, 56348), (172, 56357),

Gene: MeaningOfLife_98 Start: 60071, Stop: 60373, Start Num: 82

Candidate Starts for MeaningOfLife_98:

(Start: 72 @60050 has 2 MA's), (Start: 82 @60071 has 124 MA's), (115, 60146), (168, 60332), (172, 60347),

Gene: Megsy_102 Start: 59832, Stop: 60134, Start Num: 82

Candidate Starts for Megsy_102:

(Start: 72 @59811 has 2 MA's), (Start: 82 @59832 has 124 MA's), (115, 59907), (168, 60093), (172, 60108),

Gene: Mercurio_63 Start: 43953, Stop: 44282, Start Num: 67

Candidate Starts for Mercurio_63:

(Start: 67 @43953 has 69 MA's), (129, 44136), (151, 44223),

Gene: Milly_94 Start: 57772, Stop: 58050, Start Num: 82

Candidate Starts for Milly_94:

(Start: 80 @57769 has 21 MA's), (Start: 82 @57772 has 124 MA's), (131, 57922), (172, 58030),

Gene: Min1_34 Start: 16506, Stop: 16799, Start Num: 94

Candidate Starts for Min1_34:

(58, 16446), (Start: 67 @16461 has 69 MA's), (70, 16464), (Start: 76 @16479 has 3 MA's), (Start: 86 @16491 has 6 MA's), (Start: 94 @16506 has 11 MA's), (121, 16617), (134, 16686), (163, 16782),

Gene: Miryou_98 Start: 62747, Stop: 63052, Start Num: 82
Candidate Starts for Miryou_98:
(Start: 82 @62747 has 124 MA's),

Gene: Misha28_1 Start: 42, Stop: 374, Start Num: 87
Candidate Starts for Misha28_1:
(66, 9), (73, 15), (Start: 87 @42 has 74 MA's), (109, 120), (130, 213), (137, 237), (148, 285), (167, 339), (171, 354),

Gene: MissDaisy_88 Start: 53576, Stop: 53857, Start Num: 84
Candidate Starts for MissDaisy_88:
(Start: 84 @53576 has 40 MA's), (170, 53825), (172, 53831),

Gene: Mitti_94 Start: 56983, Stop: 57288, Start Num: 84
Candidate Starts for Mitti_94:
(Start: 84 @56983 has 40 MA's), (172, 57262),

Gene: Morkie_74 Start: 41703, Stop: 42008, Start Num: 84
Candidate Starts for Morkie_74:
(41, 41607), (Start: 84 @41703 has 40 MA's), (143, 41913),

Gene: Morrissey_63 Start: 43651, Stop: 44007, Start Num: 51
Candidate Starts for Morrissey_63:
(Start: 51 @43651 has 1 MA's), (56, 43666), (Start: 63 @43678 has 1 MA's), (Start: 76 @43702 has 3 MA's), (128, 43864), (151, 43969),

Gene: Mova_1 Start: 41, Stop: 373, Start Num: 86
Candidate Starts for Mova_1:
(Start: 67 @11 has 69 MA's), (Start: 86 @41 has 6 MA's), (109, 119), (130, 212), (137, 236), (148, 284), (167, 338), (171, 353),

Gene: Mowgli_62 Start: 41126, Stop: 41452, Start Num: 67
Candidate Starts for Mowgli_62:
(Start: 67 @41126 has 69 MA's), (131, 41321), (151, 41399),

Gene: Mozy_1 Start: 40, Stop: 372, Start Num: 87
Candidate Starts for Mozy_1:
(65, 7), (69, 13), (Start: 87 @40 has 74 MA's), (102, 85), (106, 109), (109, 118), (128, 199), (137, 235), (148, 283), (166, 328), (167, 337), (171, 352),

Gene: Mufasa_94 Start: 57627, Stop: 57905, Start Num: 82
Candidate Starts for Mufasa_94:
(Start: 80 @57624 has 21 MA's), (Start: 82 @57627 has 124 MA's), (172, 57885),

Gene: MulchExplorer_1 Start: 41, Stop: 373, Start Num: 87
Candidate Starts for MulchExplorer_1:
(Start: 67 @11 has 69 MA's), (Start: 87 @41 has 74 MA's), (109, 119), (130, 212), (148, 284), (166, 329), (167, 338), (171, 353),

Gene: Murucutumbu_96 Start: 60249, Stop: 60551, Start Num: 82

Candidate Starts for Murucutumbu_96:

(Start: 72 @60228 has 2 MA's), (Start: 82 @60249 has 124 MA's), (104, 60300), (115, 60324), (168, 60510), (172, 60525),

Gene: Mynx_97 Start: 59694, Stop: 59996, Start Num: 82

Candidate Starts for Mynx_97:

(Start: 72 @59673 has 2 MA's), (Start: 82 @59694 has 124 MA's), (115, 59769), (168, 59955), (172, 59970),

Gene: Nibb_103 Start: 61945, Stop: 62238, Start Num: 80

Candidate Starts for Nibb_103:

(Start: 80 @61945 has 21 MA's), (115, 62020), (146, 62146), (164, 62194),

Gene: Nicky22_69 Start: 41321, Stop: 41596, Start Num: 98

Candidate Starts for Nicky22_69:

(Start: 98 @41321 has 60 MA's), (140, 41507),

Gene: Nikao_80 Start: 58687, Stop: 58992, Start Num: 84

Candidate Starts for Nikao_80:

(27, 58555), (Start: 84 @58687 has 40 MA's), (115, 58762), (126, 58807), (168, 58951), (169, 58957), (172, 58966),

Gene: Niklas_98 Start: 60655, Stop: 60942, Start Num: 82

Candidate Starts for Niklas_98:

(2, 60328), (50, 60592), (Start: 82 @60655 has 124 MA's), (115, 60730), (143, 60847), (158, 60892), (173, 60928),

Gene: Nutello_77 Start: 56074, Stop: 56379, Start Num: 84

Candidate Starts for Nutello_77:

(27, 55942), (Start: 84 @56074 has 40 MA's), (115, 56149), (126, 56194), (168, 56338), (169, 56344), (172, 56353),

Gene: ODay_1 Start: 39, Stop: 371, Start Num: 87

Candidate Starts for ODay_1:

(66, 9), (Start: 71 @15 has 4 MA's), (Start: 87 @39 has 74 MA's), (109, 117), (115, 141), (137, 234), (148, 282), (161, 318), (171, 351),

Gene: OctaviousRex_61 Start: 41104, Stop: 41430, Start Num: 67

Candidate Starts for OctaviousRex_61:

(Start: 67 @41104 has 69 MA's), (131, 41299), (151, 41377),

Gene: Ogotopogo_2 Start: 299, Stop: 631, Start Num: 87

Candidate Starts for Ogotopogo_2:

(Start: 87 @299 has 74 MA's), (109, 377), (137, 494), (145, 524), (148, 542), (166, 587), (171, 611),

Gene: OkiRoe_97 Start: 62228, Stop: 62533, Start Num: 82

Candidate Starts for OkiRoe_97:

(Start: 82 @62228 has 124 MA's),

Gene: Oksu_1 Start: 41, Stop: 373, Start Num: 87

Candidate Starts for Oksu_1:

(Start: 67 @11 has 69 MA's), (Start: 87 @41 has 74 MA's), (109, 119), (137, 236), (148, 284), (167, 338), (171, 353),

Gene: Olga_63 Start: 41126, Stop: 41452, Start Num: 67
Candidate Starts for Olga_63:
(Start: 67 @41126 has 69 MA's), (131, 41321), (151, 41399),

Gene: Olliecat_66 Start: 38762, Stop: 39037, Start Num: 98
Candidate Starts for Olliecat_66:
(4, 38429), (21, 38579), (37, 38630), (Start: 98 @38762 has 60 MA's), (140, 38948), (156, 39005),

Gene: OmniCritical_94 Start: 57061, Stop: 57366, Start Num: 84
Candidate Starts for OmniCritical_94:
(Start: 84 @57061 has 40 MA's), (172, 57340),

Gene: Omnicron_96 Start: 61077, Stop: 61382, Start Num: 82
Candidate Starts for Omnicron_96:
(53, 61029), (Start: 82 @61077 has 124 MA's), (131, 61245),

Gene: Orcanus_65 Start: 39051, Stop: 39329, Start Num: 94
Candidate Starts for Orcanus_65:
(Start: 94 @39051 has 11 MA's),

Gene: Oscar_104 Start: 62087, Stop: 62383, Start Num: 80
Candidate Starts for Oscar_104:
(Start: 80 @62087 has 21 MA's), (143, 62279), (146, 62288),

Gene: OwlsT2W_1 Start: 41, Stop: 373, Start Num: 87
Candidate Starts for OwlsT2W_1:
(Start: 67 @11 has 69 MA's), (Start: 87 @41 has 74 MA's), (109, 119), (130, 212), (148, 284), (167, 338), (171, 353),

Gene: P3MA_62 Start: 40580, Stop: 40894, Start Num: 81
Candidate Starts for P3MA_62:
(36, 40472), (Start: 81 @40580 has 1 MA's), (142, 40793), (172, 40871),

Gene: Padfoot_96 Start: 59544, Stop: 59846, Start Num: 82
Candidate Starts for Padfoot_96:
(Start: 72 @59523 has 2 MA's), (Start: 82 @59544 has 124 MA's), (115, 59619), (168, 59805), (172, 59820),

Gene: Padpat_101 Start: 59949, Stop: 60251, Start Num: 82
Candidate Starts for Padpat_101:
(Start: 72 @59928 has 2 MA's), (Start: 82 @59949 has 124 MA's), (115, 60024), (168, 60210), (172, 60225),

Gene: Paito_63 Start: 40764, Stop: 41090, Start Num: 67
Candidate Starts for Paito_63:
(Start: 67 @40764 has 69 MA's),

Gene: Paola_93 Start: 61102, Stop: 61407, Start Num: 82
Candidate Starts for Paola_93:
(Start: 82 @61102 has 124 MA's),

Gene: Patt_87 Start: 53723, Stop: 54004, Start Num: 84

Candidate Starts for Patt_87:

(Start: 84 @53723 has 40 MA's), (170, 53972), (172, 53978),

Gene: Peanam_99 Start: 60707, Stop: 60994, Start Num: 82

Candidate Starts for Peanam_99:

(2, 60395), (50, 60644), (Start: 82 @60707 has 124 MA's), (115, 60782), (143, 60899), (158, 60944), (173, 60980),

Gene: Peeb_61 Start: 41100, Stop: 41426, Start Num: 67

Candidate Starts for Peeb_61:

(Start: 67 @41100 has 69 MA's), (131, 41295), (151, 41373),

Gene: Peel_96 Start: 59350, Stop: 59652, Start Num: 82

Candidate Starts for Peel_96:

(Start: 72 @59329 has 2 MA's), (Start: 82 @59350 has 124 MA's), (115, 59425), (168, 59611), (172, 59626),

Gene: Periodt_62 Start: 41518, Stop: 41844, Start Num: 67

Candidate Starts for Periodt_62:

(Start: 67 @41518 has 69 MA's),

Gene: Periwinkle_1 Start: 39, Stop: 371, Start Num: 87

Candidate Starts for Periwinkle_1:

(66, 9), (Start: 71 @15 has 4 MA's), (77, 27), (Start: 87 @39 has 74 MA's), (109, 117), (115, 141), (116, 144), (137, 234), (145, 264), (148, 282), (171, 351),

Gene: Phabuloso_1 Start: 39, Stop: 371, Start Num: 87

Candidate Starts for Phabuloso_1:

(66, 9), (Start: 71 @15 has 4 MA's), (Start: 87 @39 has 74 MA's), (109, 117), (115, 141), (137, 234), (148, 282), (161, 318), (171, 351),

Gene: Pharb_97 Start: 60473, Stop: 60760, Start Num: 84

Candidate Starts for Pharb_97:

(1, 60098), (6, 60224), (33, 60362), (43, 60389), (61, 60437), (Start: 84 @60473 has 40 MA's), (103, 60521), (151, 60701),

Gene: PhelpsODU_92 Start: 56221, Stop: 56529, Start Num: 80

Candidate Starts for PhelpsODU_92:

(Start: 80 @56221 has 21 MA's), (115, 56296), (172, 56503),

Gene: Phisb_72 Start: 41092, Stop: 41367, Start Num: 98

Candidate Starts for Phisb_72:

(Start: 98 @41092 has 60 MA's),

Gene: Phish_61 Start: 41125, Stop: 41451, Start Num: 67

Candidate Starts for Phish_61:

(Start: 67 @41125 has 69 MA's), (131, 41320), (151, 41398),

Gene: Phistory_1 Start: 39, Stop: 371, Start Num: 87

Candidate Starts for Phistory_1:

(66, 9), (Start: 71 @15 has 4 MA's), (Start: 87 @39 has 74 MA's), (115, 141), (116, 144), (137, 234), (145, 264), (148, 282), (161, 318), (171, 351),

Gene: PhorbesPhlower_72 Start: 41098, Stop: 41403, Start Num: 84
Candidate Starts for PhorbesPhlower_72:
(41, 41002), (Start: 84 @41098 has 40 MA's), (143, 41308),

Gene: Phrank_103 Start: 60753, Stop: 61058, Start Num: 80
Candidate Starts for Phrank_103:
(Start: 80 @60753 has 21 MA's), (115, 60828), (172, 61032),

Gene: Phreak_62 Start: 41125, Stop: 41451, Start Num: 67
Candidate Starts for Phreak_62:
(Start: 67 @41125 has 69 MA's), (131, 41320), (151, 41398),

Gene: Piatt_95 Start: 59544, Stop: 59846, Start Num: 82
Candidate Starts for Piatt_95:
(Start: 72 @59523 has 2 MA's), (Start: 82 @59544 has 124 MA's), (115, 59619), (168, 59805), (172, 59820),

Gene: PinkYoshi_62 Start: 41117, Stop: 41443, Start Num: 67
Candidate Starts for PinkYoshi_62:
(Start: 67 @41117 has 69 MA's), (131, 41312), (151, 41390),

Gene: Pinnie_65 Start: 44002, Stop: 44328, Start Num: 67
Candidate Starts for Pinnie_65:
(Start: 67 @44002 has 69 MA's), (97, 44056), (127, 44176), (128, 44179),

Gene: Piper2020_1 Start: 42, Stop: 374, Start Num: 87
Candidate Starts for Piper2020_1:
(66, 9), (73, 15), (Start: 87 @42 has 74 MA's), (109, 120), (130, 213), (137, 237), (148, 285), (167, 339), (171, 354),

Gene: Pitbull_79 Start: 41146, Stop: 41412, Start Num: 95
Candidate Starts for Pitbull_79:
(Start: 95 @41146 has 2 MA's), (126, 41263), (150, 41371),

Gene: Pixie_100 Start: 60794, Stop: 61081, Start Num: 84
Candidate Starts for Pixie_100:
(33, 60683), (58, 60752), (Start: 68 @60767 has 2 MA's), (Start: 84 @60794 has 40 MA's), (159, 61031), (172, 61055),

Gene: Plagueis_62 Start: 40946, Stop: 41272, Start Num: 67
Candidate Starts for Plagueis_62:
(Start: 67 @40946 has 69 MA's), (131, 41141), (151, 41219),

Gene: Plumbus_1 Start: 41, Stop: 373, Start Num: 87
Candidate Starts for Plumbus_1:
(Start: 67 @11 has 69 MA's), (Start: 87 @41 has 74 MA's), (109, 119), (130, 212), (148, 284), (166, 329), (167, 338), (171, 353),

Gene: Pokerus_96 Start: 59414, Stop: 59716, Start Num: 82
Candidate Starts for Pokerus_96:
(Start: 72 @59393 has 2 MA's), (Start: 82 @59414 has 124 MA's), (115, 59489), (168, 59675), (172, 59690),

Gene: Pollywog_1 Start: 40, Stop: 372, Start Num: 86
Candidate Starts for Pollywog_1:
(65, 7), (69, 13), (Start: 86 @40 has 6 MA's), (109, 118), (137, 235), (148, 283), (167, 337), (171, 352),

Gene: Prithvi_98 Start: 59952, Stop: 60254, Start Num: 82
Candidate Starts for Prithvi_98:
(Start: 72 @59931 has 2 MA's), (Start: 82 @59952 has 124 MA's), (115, 60027), (168, 60213), (172, 60228),

Gene: Psycho_98 Start: 61690, Stop: 61995, Start Num: 82
Candidate Starts for Psycho_98:
(Start: 82 @61690 has 124 MA's), (126, 61828),

Gene: Puppies_62 Start: 41790, Stop: 42113, Start Num: 72
Candidate Starts for Puppies_62:
(32, 41697), (40, 41718), (45, 41733), (47, 41739), (Start: 60 @41775 has 1 MA's), (Start: 72 @41790 has 2 MA's), (131, 41988),

Gene: QMacho_72 Start: 41222, Stop: 41497, Start Num: 98
Candidate Starts for QMacho_72:
(Start: 98 @41222 has 60 MA's),

Gene: Quenya_69 Start: 41516, Stop: 41791, Start Num: 98
Candidate Starts for Quenya_69:
(Start: 98 @41516 has 60 MA's), (105, 41549), (140, 41702), (162, 41774),

Gene: Quico_1 Start: 41, Stop: 373, Start Num: 87
Candidate Starts for Quico_1:
(Start: 67 @11 has 69 MA's), (Start: 87 @41 has 74 MA's), (102, 86), (106, 110), (109, 119), (128, 200), (137, 236), (148, 284), (166, 329), (167, 338), (171, 353),

Gene: QuincyRose_94 Start: 59358, Stop: 59660, Start Num: 82
Candidate Starts for QuincyRose_94:
(Start: 72 @59337 has 2 MA's), (Start: 82 @59358 has 124 MA's), (115, 59433), (168, 59619), (172, 59634),

Gene: Rabbs_63 Start: 41200, Stop: 41526, Start Num: 67
Candidate Starts for Rabbs_63:
(Start: 67 @41200 has 69 MA's), (151, 41473),

Gene: Ramen_97 Start: 59101, Stop: 59403, Start Num: 82
Candidate Starts for Ramen_97:
(Start: 72 @59080 has 2 MA's), (Start: 82 @59101 has 124 MA's), (115, 59176), (168, 59362), (172, 59377),

Gene: Ramsey_1 Start: 11, Stop: 373, Start Num: 67
Candidate Starts for Ramsey_1:
(Start: 67 @11 has 69 MA's), (Start: 87 @41 has 74 MA's), (109, 119), (130, 212), (148, 284), (167, 338), (171, 353),

Gene: Rando14_92 Start: 59491, Stop: 59796, Start Num: 82
Candidate Starts for Rando14_92:
(53, 59443), (Start: 82 @59491 has 124 MA's), (131, 59659),

Gene: Rapunzel97_99 Start: 59326, Stop: 59628, Start Num: 82
Candidate Starts for Rapunzel97_99:
(Start: 72 @59305 has 2 MA's), (Start: 82 @59326 has 124 MA's), (115, 59401), (168, 59587), (172, 59602),

Gene: Remy19_62 Start: 41125, Stop: 41451, Start Num: 67
Candidate Starts for Remy19_62:
(Start: 67 @41125 has 69 MA's), (131, 41320), (151, 41398),

Gene: Renaissance_61 Start: 41103, Stop: 41429, Start Num: 67
Candidate Starts for Renaissance_61:
(Start: 67 @41103 has 69 MA's), (131, 41298), (151, 41376),

Gene: Renna12_72 Start: 38798, Stop: 39091, Start Num: 85
Candidate Starts for Renna12_72:
(74, 38777), (Start: 85 @38798 has 5 MA's), (129, 38957), (144, 39020),

Gene: Reptar3000_88 Start: 53713, Stop: 53994, Start Num: 84
Candidate Starts for Reptar3000_88:
(Start: 84 @53713 has 40 MA's), (170, 53962), (172, 53968),

Gene: Rialto_1 Start: 41, Stop: 373, Start Num: 87
Candidate Starts for Rialto_1:
(Start: 67 @11 has 69 MA's), (Start: 87 @41 has 74 MA's), (109, 119), (130, 212), (137, 236), (148, 284), (167, 338), (171, 353),

Gene: RockyHorror_1 Start: 41, Stop: 373, Start Num: 87
Candidate Starts for RockyHorror_1:
(Start: 67 @11 has 69 MA's), (Start: 87 @41 has 74 MA's), (109, 119), (130, 212), (148, 284), (167, 338), (171, 353),

Gene: Rollins_70 Start: 39578, Stop: 39853, Start Num: 98
Candidate Starts for Rollins_70:
(17, 39380), (21, 39395), (30, 39422), (40, 39455), (55, 39503), (Start: 64 @39518 has 1 MA's), (Start: 82 @39551 has 124 MA's), (Start: 98 @39578 has 60 MA's),

Gene: Rona_66 Start: 41247, Stop: 41522, Start Num: 98
Candidate Starts for Rona_66:
(55, 41172), (Start: 98 @41247 has 60 MA's), (140, 41433), (147, 41463),

Gene: Ronaldo_147 Start: 67378, Stop: 67635, Start Num: 96
Candidate Starts for Ronaldo_147:
(Start: 96 @67378 has 6 MA's), (119, 67474), (126, 67498), (131, 67528), (142, 67561),

Gene: Rosmarinus_97 Start: 59335, Stop: 59637, Start Num: 82
Candidate Starts for Rosmarinus_97:
(Start: 72 @59314 has 2 MA's), (Start: 82 @59335 has 124 MA's), (115, 59410), (168, 59596), (172, 59611),

Gene: Ruchi_64 Start: 38215, Stop: 38493, Start Num: 94
Candidate Starts for Ruchi_64:
(40, 38110), (54, 38140), (Start: 88 @38203 has 1 MA's), (Start: 94 @38215 has 11 MA's),

Gene: Ruthiejr_96 Start: 56946, Stop: 57251, Start Num: 84
Candidate Starts for Ruthiejr_96:
(Start: 84 @56946 has 40 MA's), (117, 57051), (172, 57225),

Gene: SamScheppers_93 Start: 57439, Stop: 57744, Start Num: 84
Candidate Starts for SamScheppers_93:
(Start: 84 @57439 has 40 MA's), (172, 57718),

Gene: SamuelLPlaqson_98 Start: 60168, Stop: 60470, Start Num: 82
Candidate Starts for SamuelLPlaqson_98:
(Start: 72 @60147 has 2 MA's), (Start: 82 @60168 has 124 MA's), (115, 60243), (168, 60429), (172, 60444),

Gene: SanaSana_70 Start: 41542, Stop: 41817, Start Num: 98
Candidate Starts for SanaSana_70:
(10, 41296), (12, 41311), (18, 41350), (52, 41458), (55, 41467), (Start: 64 @41482 has 1 MA's), (Start: 82 @41515 has 124 MA's), (Start: 98 @41542 has 60 MA's), (105, 41575), (140, 41728), (142, 41731),

Gene: SansAfet_72 Start: 41068, Stop: 41343, Start Num: 98
Candidate Starts for SansAfet_72:
(Start: 98 @41068 has 60 MA's), (140, 41254),

Gene: Sapo_61 Start: 45211, Stop: 45513, Start Num: 79
Candidate Starts for Sapo_61:
(Start: 79 @45211 has 2 MA's), (115, 45304), (123, 45337), (136, 45412), (165, 45505),

Gene: SarBear_72 Start: 41148, Stop: 41423, Start Num: 98
Candidate Starts for SarBear_72:
(Start: 98 @41148 has 60 MA's),

Gene: Sarma624_1 Start: 41, Stop: 373, Start Num: 87
Candidate Starts for Sarma624_1:
(Start: 67 @11 has 69 MA's), (Start: 87 @41 has 74 MA's), (109, 119), (130, 212), (148, 284), (167, 338), (171, 353),

Gene: Scarlett_103 Start: 61956, Stop: 62252, Start Num: 80
Candidate Starts for Scarlett_103:
(Start: 80 @61956 has 21 MA's), (143, 62148), (146, 62157),

Gene: Schiebel_60 Start: 40665, Stop: 40991, Start Num: 67
Candidate Starts for Schiebel_60:
(Start: 67 @40665 has 69 MA's), (131, 40860), (151, 40938),

Gene: Schmidt_58 Start: 36837, Stop: 37133, Start Num: 85
Candidate Starts for Schmidt_58:
(Start: 85 @36837 has 5 MA's), (131, 37008), (157, 37107),

Gene: SgtBeansprout_78 Start: 56074, Stop: 56379, Start Num: 84
Candidate Starts for SgtBeansprout_78:
(27, 55942), (Start: 84 @56074 has 40 MA's), (115, 56149), (126, 56194), (168, 56338), (169, 56344), (172, 56353),

Gene: ShaboiShabazz_61 Start: 41125, Stop: 41451, Start Num: 67

Candidate Starts for ShaboiShabazz_61:

(Start: 67 @41125 has 69 MA's), (131, 41320), (151, 41398),

Gene: Shadow1_100 Start: 60099, Stop: 60404, Start Num: 80

Candidate Starts for Shadow1_100:

(Start: 80 @60099 has 21 MA's), (115, 60174), (172, 60378),

Gene: Shagrat_110 Start: 58151, Stop: 58423, Start Num: 96

Candidate Starts for Shagrat_110:

(Start: 96 @58151 has 6 MA's), (120, 58256), (129, 58295), (152, 58391), (154, 58394),

Gene: Shaobing_96 Start: 60696, Stop: 60983, Start Num: 82

Candidate Starts for Shaobing_96:

(2, 60369), (50, 60633), (Start: 82 @60696 has 124 MA's), (115, 60771), (143, 60888), (158, 60933), (173, 60969),

Gene: Sharkboy_68 Start: 41611, Stop: 41886, Start Num: 98

Candidate Starts for Sharkboy_68:

(55, 41536), (Start: 98 @41611 has 60 MA's), (105, 41644), (140, 41797), (147, 41827),

Gene: Shayna_75 Start: 41004, Stop: 41279, Start Num: 98

Candidate Starts for Shayna_75:

(Start: 98 @41004 has 60 MA's), (140, 41190),

Gene: ShedlockHolmes_100 Start: 60729, Stop: 61016, Start Num: 84

Candidate Starts for ShedlockHolmes_100:

(33, 60618), (58, 60687), (Start: 68 @60702 has 2 MA's), (Start: 84 @60729 has 40 MA's), (159, 60966), (172, 60990),

Gene: ShiaSurprise_99 Start: 59544, Stop: 59846, Start Num: 82

Candidate Starts for ShiaSurprise_99:

(Start: 72 @59523 has 2 MA's), (Start: 82 @59544 has 124 MA's), (115, 59619), (168, 59805), (172, 59820),

Gene: SirPhilip_98 Start: 61540, Stop: 61833, Start Num: 80

Candidate Starts for SirPhilip_98:

(Start: 80 @61540 has 21 MA's), (115, 61615),

Gene: Sizemore_63 Start: 41114, Stop: 41440, Start Num: 67

Candidate Starts for Sizemore_63:

(Start: 67 @41114 has 69 MA's), (131, 41309), (151, 41387),

Gene: Skylord_70 Start: 39495, Stop: 39770, Start Num: 98

Candidate Starts for Skylord_70:

(17, 39297), (21, 39312), (30, 39339), (40, 39372), (55, 39420), (Start: 64 @39435 has 1 MA's), (Start: 82 @39468 has 124 MA's), (Start: 98 @39495 has 60 MA's),

Gene: Slarp_92 Start: 56344, Stop: 56649, Start Num: 84

Candidate Starts for Slarp_92:

(Start: 84 @56344 has 40 MA's), (172, 56623),

Gene: Slay_70 Start: 41458, Stop: 41733, Start Num: 98

Candidate Starts for Slay_70:

(Start: 98 @41458 has 60 MA's), (140, 41644),

Gene: Slimphazie_99 Start: 59782, Stop: 60084, Start Num: 82

Candidate Starts for Slimphazie_99:

(Start: 72 @59761 has 2 MA's), (Start: 82 @59782 has 124 MA's), (115, 59857), (168, 60043), (172, 60058),

Gene: Sneeze_62 Start: 41199, Stop: 41525, Start Num: 67

Candidate Starts for Sneeze_62:

(Start: 67 @41199 has 69 MA's), (151, 41472),

Gene: SoSeph_96 Start: 61535, Stop: 61840, Start Num: 82

Candidate Starts for SoSeph_96:

(Start: 82 @61535 has 124 MA's),

Gene: Soul22_1 Start: 38, Stop: 370, Start Num: 87

Candidate Starts for Soul22_1:

(Start: 67 @11 has 69 MA's), (Start: 87 @38 has 74 MA's), (109, 116), (116, 143), (137, 233), (145, 263), (148, 281), (166, 326), (171, 350),

Gene: Spikelee_1 Start: 41, Stop: 373, Start Num: 87

Candidate Starts for Spikelee_1:

(Start: 67 @11 has 69 MA's), (Start: 87 @41 has 74 MA's), (109, 119), (130, 212), (148, 284), (167, 338), (171, 353),

Gene: Spock_96 Start: 59348, Stop: 59650, Start Num: 82

Candidate Starts for Spock_96:

(Start: 72 @59327 has 2 MA's), (Start: 82 @59348 has 124 MA's), (115, 59423), (168, 59609), (172, 59624),

Gene: Spooky_1 Start: 39, Stop: 371, Start Num: 87

Candidate Starts for Spooky_1:

(66, 9), (Start: 71 @15 has 4 MA's), (Start: 87 @39 has 74 MA's), (137, 234), (141, 249), (148, 282), (161, 318), (171, 351),

Gene: Squiddly_2 Start: 730, Stop: 1062, Start Num: 87

Candidate Starts for Squiddly_2:

(31, 601), (35, 613), (69, 697), (Start: 87 @730 has 74 MA's), (130, 901), (135, 919), (148, 973), (161, 1009), (171, 1042),

Gene: Squircle_66 Start: 38761, Stop: 39036, Start Num: 98

Candidate Starts for Squircle_66:

(4, 38428), (21, 38578), (37, 38629), (Start: 98 @38761 has 60 MA's), (140, 38947), (156, 39004),

Gene: Squirty_1 Start: 40, Stop: 372, Start Num: 87

Candidate Starts for Squirty_1:

(65, 7), (69, 13), (Start: 87 @40 has 74 MA's), (106, 109), (109, 118), (130, 211), (145, 265), (148, 283), (166, 328), (167, 337), (171, 352),

Gene: Stap_1 Start: 41, Stop: 373, Start Num: 87

Candidate Starts for Stap_1:

(Start: 67 @11 has 69 MA's), (Start: 87 @41 has 74 MA's), (109, 119), (130, 212), (148, 284), (167, 338), (171, 353),

Gene: Starcevich_1 Start: 41, Stop: 373, Start Num: 87

Candidate Starts for Starcevich_1:

(Start: 67 @11 has 69 MA's), (Start: 87 @41 has 74 MA's), (109, 119), (130, 212), (137, 236), (148, 284), (167, 338), (171, 353),

Gene: Stargaze_64 Start: 44492, Stop: 44815, Start Num: 67

Candidate Starts for Stargaze_64:

(Start: 67 @44492 has 69 MA's), (97, 44543), (127, 44663),

Gene: Stinson_97 Start: 59559, Stop: 59861, Start Num: 82

Candidate Starts for Stinson_97:

(Start: 72 @59538 has 2 MA's), (Start: 82 @59559 has 124 MA's), (104, 59610), (115, 59634), (168, 59820), (172, 59835),

Gene: Stoor_69 Start: 41350, Stop: 41625, Start Num: 98

Candidate Starts for Stoor_69:

(Start: 98 @41350 has 60 MA's), (140, 41536), (142, 41539),

Gene: Strobilo_95 Start: 57688, Stop: 57966, Start Num: 82

Candidate Starts for Strobilo_95:

(Start: 80 @57685 has 21 MA's), (Start: 82 @57688 has 124 MA's), (131, 57838), (172, 57946),

Gene: Stromboli_68 Start: 41130, Stop: 41405, Start Num: 98

Candidate Starts for Stromboli_68:

(10, 40884), (12, 40899), (18, 40938), (52, 41046), (55, 41055), (Start: 64 @41070 has 1 MA's), (Start: 82 @41103 has 124 MA's), (Start: 98 @41130 has 60 MA's), (140, 41316), (142, 41319),

Gene: Sulley_95 Start: 59512, Stop: 59814, Start Num: 82

Candidate Starts for Sulley_95:

(Start: 72 @59491 has 2 MA's), (Start: 82 @59512 has 124 MA's), (115, 59587), (168, 59773), (172, 59788),

Gene: Sunflower1121_100 Start: 59857, Stop: 60162, Start Num: 80

Candidate Starts for Sunflower1121_100:

(Start: 80 @59857 has 21 MA's), (115, 59932), (172, 60136),

Gene: SunnyD_78 Start: 41007, Stop: 41282, Start Num: 98

Candidate Starts for SunnyD_78:

(Start: 98 @41007 has 60 MA's), (140, 41193),

Gene: Sweets_62 Start: 41120, Stop: 41446, Start Num: 67

Candidate Starts for Sweets_62:

(Start: 67 @41120 has 69 MA's), (131, 41315), (151, 41393),

Gene: Swervy_70 Start: 41047, Stop: 41322, Start Num: 98

Candidate Starts for Swervy_70:

(Start: 98 @41047 has 60 MA's), (140, 41233),

Gene: Syra333_99 Start: 59939, Stop: 60244, Start Num: 80

Candidate Starts for Syra333_99:

(Start: 80 @59939 has 21 MA's), (115, 60014), (172, 60218),

Gene: TBond007_97 Start: 60792, Stop: 61079, Start Num: 84

Candidate Starts for TBond007_97:

(33, 60681), (58, 60750), (Start: 68 @60765 has 2 MA's), (Start: 84 @60792 has 40 MA's), (159, 61029), (172, 61053),

Gene: TClif_100 Start: 61109, Stop: 61408, Start Num: 80

Candidate Starts for TClif_100:

(Start: 80 @61109 has 21 MA's), (107, 61175), (143, 61301), (158, 61349), (172, 61382),

Gene: TM4_92 Start: 52356, Stop: 52637, Start Num: 80

Candidate Starts for TM4_92:

(Start: 80 @52356 has 21 MA's), (Start: 82 @52359 has 124 MA's), (131, 52509), (133, 52515), (172, 52617),

Gene: Tachez_97 Start: 59195, Stop: 59497, Start Num: 82

Candidate Starts for Tachez_97:

(Start: 72 @59174 has 2 MA's), (Start: 82 @59195 has 124 MA's), (115, 59270), (168, 59456), (172, 59471),

Gene: Taheera_58 Start: 40097, Stop: 40423, Start Num: 67

Candidate Starts for Taheera_58:

(Start: 67 @40097 has 69 MA's), (160, 40382),

Gene: TaiwanKao_98 Start: 59607, Stop: 59909, Start Num: 82

Candidate Starts for TaiwanKao_98:

(Start: 72 @59586 has 2 MA's), (Start: 82 @59607 has 124 MA's), (115, 59682), (168, 59868), (172, 59883),

Gene: Taquito_94 Start: 57502, Stop: 57783, Start Num: 84

Candidate Starts for Taquito_94:

(Start: 84 @57502 has 40 MA's), (172, 57757),

Gene: TaylorSipht_65 Start: 38681, Stop: 38959, Start Num: 94

Candidate Starts for TaylorSipht_65:

(Start: 94 @38681 has 11 MA's),

Gene: Teagster_77 Start: 41426, Stop: 41701, Start Num: 98

Candidate Starts for Teagster_77:

(Start: 98 @41426 has 60 MA's), (140, 41612),

Gene: Terror_58 Start: 40097, Stop: 40423, Start Num: 67

Candidate Starts for Terror_58:

(Start: 67 @40097 has 69 MA's), (160, 40382),

Gene: Thyatira_97 Start: 63441, Stop: 63746, Start Num: 82

Candidate Starts for Thyatira_97:

(Start: 82 @63441 has 124 MA's),

Gene: Tierra_102 Start: 61060, Stop: 61368, Start Num: 80

Candidate Starts for Tierra_102:

(Start: 80 @61060 has 21 MA's), (115, 61135), (172, 61342),

Gene: TinaLin_63 Start: 39046, Stop: 39342, Start Num: 85

Candidate Starts for TinaLin_63:

(Start: 60 @39004 has 1 MA's), (Start: 85 @39046 has 5 MA's), (101, 39088), (122, 39172), (151, 39304),

Gene: TingHuaYa_101 Start: 60903, Stop: 61193, Start Num: 84

Candidate Starts for TingHuaYa_101:

(Start: 84 @60903 has 40 MA's), (140, 61086),

Gene: TiniBug_95 Start: 59943, Stop: 60245, Start Num: 82

Candidate Starts for TiniBug_95:

(Start: 72 @59922 has 2 MA's), (Start: 82 @59943 has 124 MA's), (115, 60018), (168, 60204), (172, 60219),

Gene: Tiri_97 Start: 59088, Stop: 59390, Start Num: 82

Candidate Starts for Tiri_97:

(Start: 72 @59067 has 2 MA's), (Start: 82 @59088 has 124 MA's), (115, 59163), (168, 59349), (172, 59364),

Gene: TomBrady_62 Start: 41126, Stop: 41452, Start Num: 67

Candidate Starts for TomBrady_62:

(Start: 67 @41126 has 69 MA's), (131, 41321), (151, 41399),

Gene: TootsiePop_1 Start: 42, Stop: 374, Start Num: 87

Candidate Starts for TootsiePop_1:

(66, 9), (73, 15), (Start: 87 @42 has 74 MA's), (109, 120), (130, 213), (137, 237), (148, 285), (167, 339), (171, 354),

Gene: Tootsieroll_1 Start: 41, Stop: 373, Start Num: 87

Candidate Starts for Tootsieroll_1:

(Start: 67 @11 has 69 MA's), (Start: 87 @41 has 74 MA's), (109, 119), (130, 212), (148, 284), (167, 338), (171, 353),

Gene: Topper_96 Start: 59347, Stop: 59649, Start Num: 82

Candidate Starts for Topper_96:

(Start: 72 @59326 has 2 MA's), (Start: 82 @59347 has 124 MA's), (115, 59422), (168, 59608), (172, 59623),

Gene: Totinger_1 Start: 41, Stop: 373, Start Num: 87

Candidate Starts for Totinger_1:

(Start: 67 @11 has 69 MA's), (Start: 87 @41 has 74 MA's), (109, 119), (130, 212), (137, 236), (148, 284), (167, 338), (171, 353),

Gene: TreyKay_98 Start: 59952, Stop: 60254, Start Num: 82

Candidate Starts for TreyKay_98:

(Start: 72 @59931 has 2 MA's), (Start: 82 @59952 has 124 MA's), (115, 60027), (168, 60213), (172, 60228),

Gene: TribbleTrouble_97 Start: 61312, Stop: 61599, Start Num: 84

Candidate Starts for TribbleTrouble_97:

(33, 61201), (58, 61270), (Start: 68 @61285 has 2 MA's), (Start: 84 @61312 has 40 MA's), (159, 61549), (172, 61573),

Gene: Trine_65 Start: 43058, Stop: 43372, Start Num: 63

Candidate Starts for Trine_65:

(Start: 63 @43058 has 1 MA's), (120, 43199),

Gene: TruffulaTree_98 Start: 59748, Stop: 60050, Start Num: 82

Candidate Starts for TruffulaTree_98:

(Start: 72 @59727 has 2 MA's), (Start: 82 @59748 has 124 MA's), (115, 59823), (168, 60009), (172, 60024),

Gene: TukTuk_70 Start: 41237, Stop: 41512, Start Num: 98

Candidate Starts for TukTuk_70:

(Start: 98 @41237 has 60 MA's), (140, 41423),

Gene: Twitch_97 Start: 59350, Stop: 59652, Start Num: 82

Candidate Starts for Twitch_97:

(Start: 72 @59329 has 2 MA's), (Start: 82 @59350 has 124 MA's), (115, 59425), (168, 59611), (172, 59626),

Gene: Typha_129 Start: 74982, Stop: 75305, Start Num: 71

Candidate Starts for Typha_129:

(Start: 71 @74982 has 4 MA's), (121, 75132), (139, 75213), (146, 75237), (147, 75249),

Gene: UncleRicky_1 Start: 41, Stop: 373, Start Num: 87

Candidate Starts for UncleRicky_1:

(Start: 67 @11 has 69 MA's), (Start: 87 @41 has 74 MA's), (109, 119), (130, 212), (148, 284), (167, 338), (171, 353),

Gene: Upyo_69 Start: 44979, Stop: 45296, Start Num: 64

Candidate Starts for Upyo_69:

(Start: 64 @44979 has 1 MA's), (108, 45075), (128, 45153), (131, 45171),

Gene: Urkel_98 Start: 60168, Stop: 60470, Start Num: 82

Candidate Starts for Urkel_98:

(Start: 72 @60147 has 2 MA's), (Start: 82 @60168 has 124 MA's), (115, 60243), (168, 60429), (172, 60444),

Gene: Validus_106 Start: 62130, Stop: 62417, Start Num: 82

Candidate Starts for Validus_106:

(Start: 82 @62130 has 124 MA's), (115, 62205), (143, 62322), (158, 62367), (169, 62382), (173, 62403),

Gene: Veliki_97 Start: 59373, Stop: 59675, Start Num: 82

Candidate Starts for Veliki_97:

(Start: 72 @59352 has 2 MA's), (Start: 82 @59373 has 124 MA's), (115, 59448), (168, 59634), (172, 59649),

Gene: Velveteen_1 Start: 41, Stop: 373, Start Num: 87

Candidate Starts for Velveteen_1:

(Start: 67 @11 has 69 MA's), (Start: 87 @41 has 74 MA's), (109, 119), (130, 212), (148, 284), (167, 338), (171, 353),

Gene: Vitas_71 Start: 39646, Stop: 39921, Start Num: 98

Candidate Starts for Vitas_71:

(26, 39487), (59, 39580), (Start: 98 @39646 has 60 MA's), (105, 39679),

Gene: Volt_150 Start: 67542, Stop: 67799, Start Num: 96

Candidate Starts for Volt_150:

(Start: 96 @67542 has 6 MA's), (119, 67638), (126, 67662), (131, 67692), (142, 67725),

Gene: Vulpecula_64 Start: 37410, Stop: 37688, Start Num: 94

Candidate Starts for Vulpecula_64:

(Start: 88 @37398 has 1 MA's), (Start: 94 @37410 has 11 MA's),

Gene: WalkingDead_71 Start: 42012, Stop: 42287, Start Num: 98

Candidate Starts for WalkingDead_71:

(Start: 98 @42012 has 60 MA's), (140, 42198), (142, 42201),

Gene: Waterfoul_95 Start: 60815, Stop: 61120, Start Num: 82

Candidate Starts for Waterfoul_95:

(Start: 82 @60815 has 124 MA's),

Gene: Wendigo_61 Start: 41104, Stop: 41430, Start Num: 67

Candidate Starts for Wendigo_61:

(Start: 67 @41104 has 69 MA's), (131, 41299), (151, 41377),

Gene: Whitney_1 Start: 39, Stop: 371, Start Num: 87

Candidate Starts for Whitney_1:

(66, 9), (Start: 71 @15 has 4 MA's), (77, 27), (Start: 87 @39 has 74 MA's), (109, 117), (115, 141), (116, 144), (137, 234), (145, 264), (148, 282), (161, 318), (171, 351),

Gene: Widow_62 Start: 42336, Stop: 42659, Start Num: 72

Candidate Starts for Widow_62:

(32, 42243), (40, 42264), (45, 42279), (47, 42285), (55, 42312), (Start: 60 @42321 has 1 MA's), (Start: 72 @42336 has 2 MA's), (131, 42534),

Gene: Wintermute_94 Start: 57134, Stop: 57439, Start Num: 84

Candidate Starts for Wintermute_94:

(Start: 84 @57134 has 40 MA's), (117, 57239), (172, 57413),

Gene: Ximenita_103 Start: 60672, Stop: 60977, Start Num: 80

Candidate Starts for Ximenita_103:

(Start: 80 @60672 has 21 MA's), (115, 60747), (172, 60951),

Gene: Y10_90 Start: 57078, Stop: 57383, Start Num: 84

Candidate Starts for Y10_90:

(Start: 84 @57078 has 40 MA's), (117, 57183), (172, 57357),

Gene: Y2_90 Start: 57078, Stop: 57383, Start Num: 84

Candidate Starts for Y2_90:

(Start: 84 @57078 has 40 MA's), (117, 57183), (172, 57357),

Gene: Yoshi_1 Start: 38, Stop: 370, Start Num: 87

Candidate Starts for Yoshi_1:

(Start: 67 @11 has 69 MA's), (Start: 87 @38 has 74 MA's), (109, 116), (116, 143), (137, 233), (145, 263), (148, 281), (166, 326), (171, 350),

Gene: YoureAdopted_95 Start: 59143, Stop: 59445, Start Num: 82
Candidate Starts for YoureAdopted_95:
(Start: 72 @59122 has 2 MA's), (Start: 82 @59143 has 124 MA's), (115, 59218), (168, 59404), (172, 59419),

Gene: Yuna_100 Start: 61837, Stop: 62139, Start Num: 78
Candidate Starts for Yuna_100:
(Start: 78 @61837 has 1 MA's), (115, 61912), (168, 62098),

Gene: Yunkel11_101 Start: 60401, Stop: 60688, Start Num: 82
Candidate Starts for Yunkel11_101:
(Start: 82 @60401 has 124 MA's), (158, 60638), (169, 60653), (170, 60656),

Gene: Zabiza_92 Start: 55756, Stop: 56058, Start Num: 82
Candidate Starts for Zabiza_92:
(Start: 72 @55735 has 2 MA's), (Start: 82 @55756 has 124 MA's), (115, 55831), (168, 56017), (172, 56032),

Gene: Zapner_2 Start: 562, Stop: 894, Start Num: 87
Candidate Starts for Zapner_2:
(65, 529), (Start: 87 @562 has 74 MA's), (137, 757), (145, 787), (148, 805), (166, 850), (171, 874),

Gene: Zavala_98 Start: 59608, Stop: 59910, Start Num: 82
Candidate Starts for Zavala_98:
(Start: 72 @59587 has 2 MA's), (Start: 82 @59608 has 124 MA's), (115, 59683), (168, 59869), (172, 59884),

Gene: Zipp_43 Start: 39758, Stop: 39973, Start Num: 178
Candidate Starts for Zipp_43:
(124, 39260), (137, 39326), (149, 39392), (174, 39500), (175, 39503), (176, 39527), (177, 39650),
(Start: 178 @39758 has 1 MA's), (179, 39860), (180, 39869), (181, 39890),

Gene: ZoMa_61 Start: 41125, Stop: 41451, Start Num: 67
Candidate Starts for ZoMa_61:
(Start: 67 @41125 has 69 MA's), (131, 41320), (151, 41398),

Gene: ZoeJ_92 Start: 56879, Stop: 57157, Start Num: 82
Candidate Starts for ZoeJ_92:
(Start: 80 @56876 has 21 MA's), (Start: 82 @56879 has 124 MA's), (125, 56990), (131, 57029), (172, 57137),

Gene: Zombie_62 Start: 41125, Stop: 41451, Start Num: 67
Candidate Starts for Zombie_62:
(Start: 67 @41125 has 69 MA's), (131, 41320), (151, 41398),