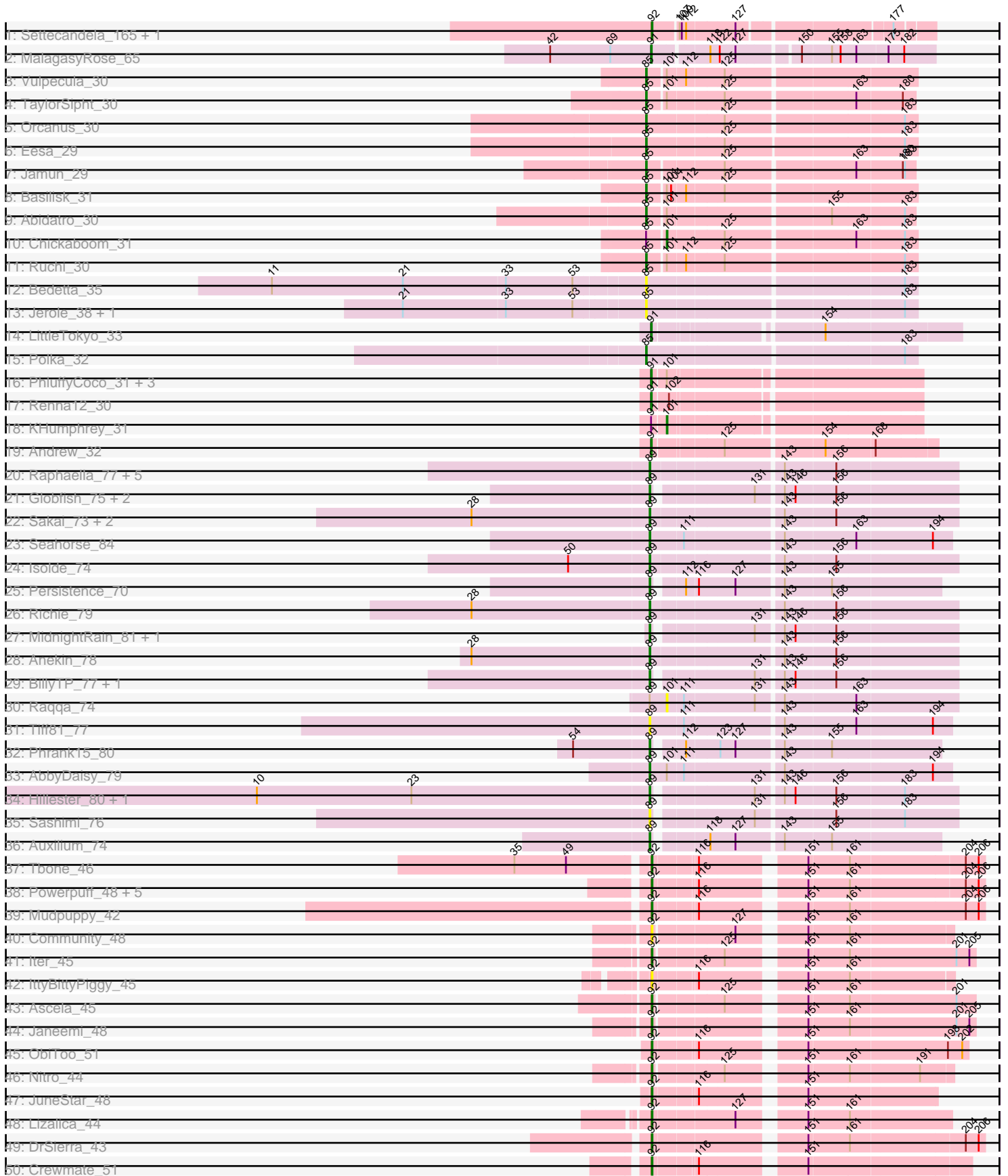
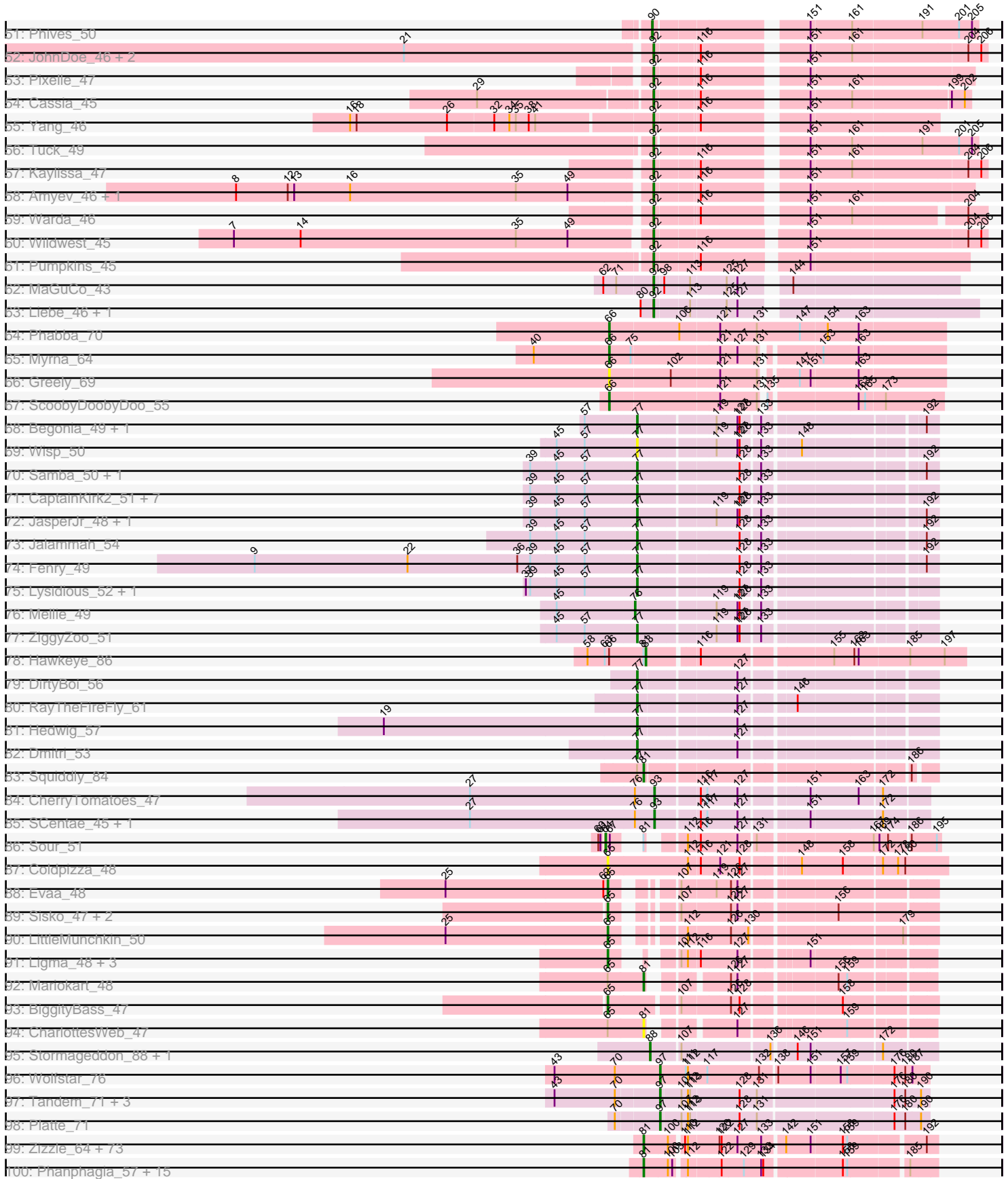


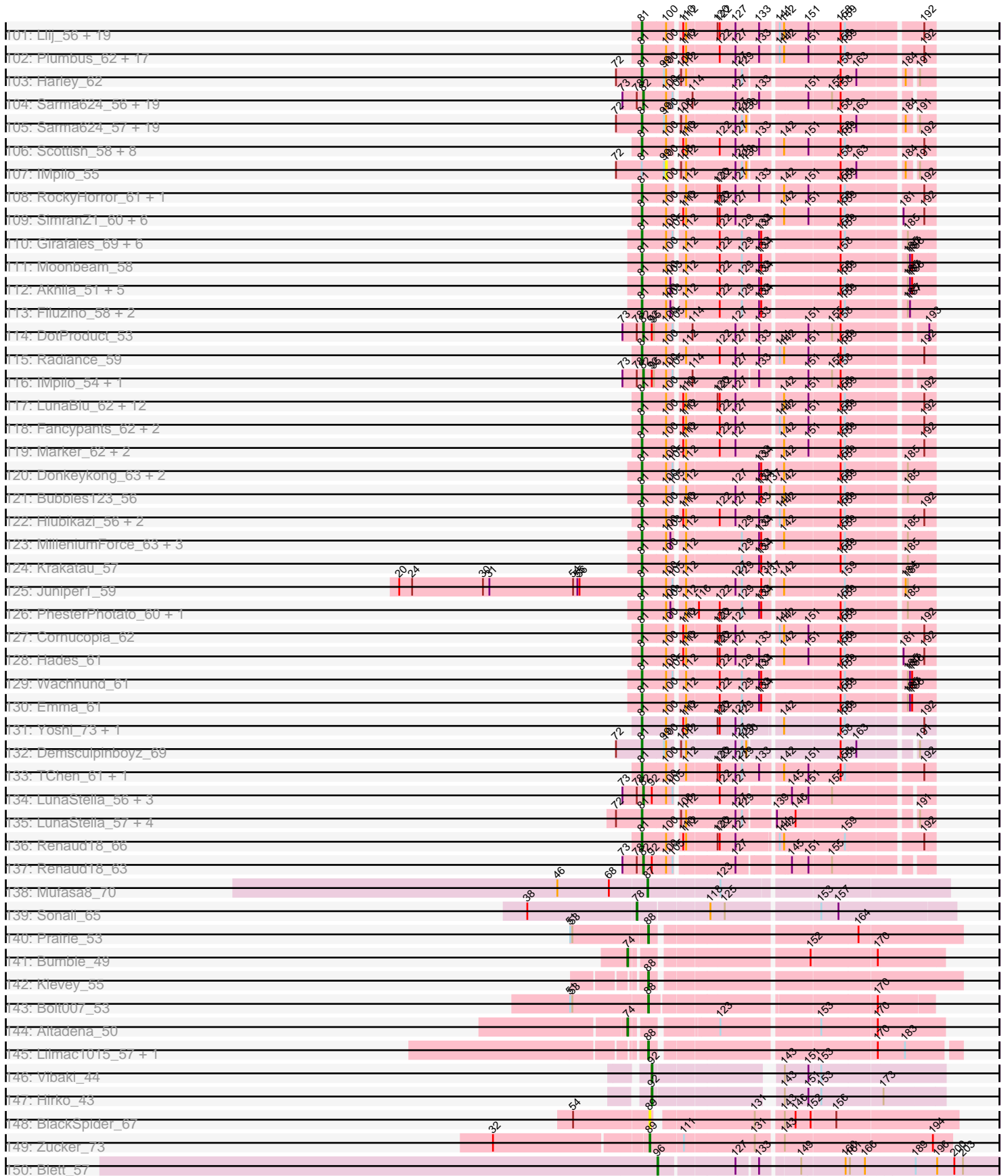
Zoomed Pham 196187



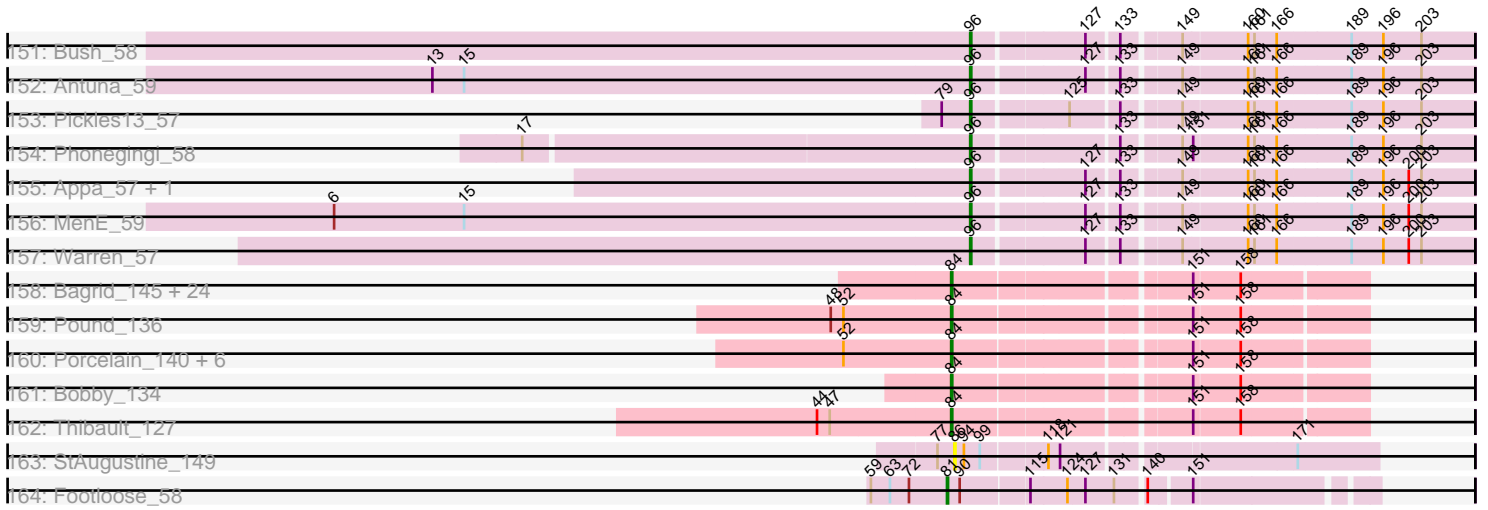
Zoomed Pham 196187



Zoomed Pham 196187



Zoomed Pham 196187



Note: Tracks are now grouped by subcluster and scaled. Switching in subcluster is indicated by changes in track color. Track scale is now set by default to display the region 30 bp upstream of start 1 to 30 bp downstream of the last possible start. If this default region is judged to be packed too tightly with annotated starts, the track will be further scaled to only show that region of the ORF with annotated starts. This action will be indicated by adding "Zoomed" to the title. For starts, yellow indicates the location of called starts comprised solely of Glimmer/GeneMark auto-annotations, green indicates the location of called starts with at least 1 manual gene annotation.

Pham 196187 Report

This analysis was run 12/09/24 on database version 580.

Pham number 196187 has 467 members, 41 are drafts.

Phages represented in each track:

- Track 1 : Settecandela_165, Phrappuccino_165
- Track 2 : MalagasyRose_65
- Track 3 : Vulpecula_30
- Track 4 : TaylorSipht_30
- Track 5 : Orcanus_30
- Track 6 : Eesa_29
- Track 7 : Jamun_29
- Track 8 : Basilisk_31
- Track 9 : Abidatro_30
- Track 10 : Chickaboom_31
- Track 11 : Ruchi_30
- Track 12 : Bedetta_35
- Track 13 : Jerole_38, Colusalem_34
- Track 14 : LittleTokyo_33
- Track 15 : Polka_32
- Track 16 : PhluffyCoco_31, RedFox_31, Juno112_30, Camara_31
- Track 17 : Renna12_30
- Track 18 : KHumphrey_31
- Track 19 : Andrew_32
- Track 20 : Raphaella_77, Faja_79, BenchScraper_76, CookieBear_73, Hestia_70, YoungHarleezy_74
- Track 21 : Globfish_75, EvePickles_75, ThayneTheZag_81
- Track 22 : Sakai_73, Gorpy_74, Aikyam_75
- Track 23 : Seahorse_84
- Track 24 : Isolde_74
- Track 25 : Persistence_70
- Track 26 : Richie_79
- Track 27 : MidnightRain_81, SpicyFrank_78
- Track 28 : Anekin_78
- Track 29 : BillyTP_77, Lawnathon_76
- Track 30 : Raqqa_74
- Track 31 : Tiff81_77
- Track 32 : Phrank15_80
- Track 33 : AbbyDaisy_79
- Track 34 : Hillester_80, RadFad_81
- Track 35 : Sashimi_76
- Track 36 : Auxilium_74

- Track 37 : Tbone_46
- Track 38 : Powerpuff_48, YesChef_46, Tutumahutu_47, Lego_45, AGrandiflora_48, Cyan_46
- Track 39 : Mudpuppy_42
- Track 40 : Community_48
- Track 41 : lter_45
- Track 42 : IttyBittyPiggy_45
- Track 43 : Ascela_45
- Track 44 : Janeemi_48
- Track 45 : ObiToo_51
- Track 46 : Nitro_44
- Track 47 : JuneStar_48
- Track 48 : Lizalica_44
- Track 49 : DrSierra_43
- Track 50 : Crewmate_51
- Track 51 : Phives_50
- Track 52 : JohnDoe_46, Simpson_48, Joemato_46
- Track 53 : Pixelle_47
- Track 54 : Cassia_45
- Track 55 : Yang_46
- Track 56 : Tuck_49
- Track 57 : Kaylissa_47
- Track 58 : Amyev_46, Tian_45
- Track 59 : Warda_46
- Track 60 : Wildwest_45
- Track 61 : Pumpkins_45
- Track 62 : MaGuCo_43
- Track 63 : Liebe_46, Maureen_46
- Track 64 : Phabba_70
- Track 65 : Myrna_64
- Track 66 : Greely_69
- Track 67 : ScoobyDoobyDoo_55
- Track 68 : Begonia_49, Malachai_49
- Track 69 : Wisp_50
- Track 70 : Samba_50, Hitter_51
- Track 71 : CaptainKirk2_51, MintFen_51, BlingBling_48, Barco_49, Melba_50, Delian_54, Zarbodnamra_50, Archis_54
- Track 72 : JasperJr_48, Guacamole_48
- Track 73 : Jalamah_54
- Track 74 : Fenry_49
- Track 75 : Lysidious_52, Utz_44
- Track 76 : Mellie_49
- Track 77 : ZiggyZoo_51
- Track 78 : Hawkeye_86
- Track 79 : DirtyBoi_56
- Track 80 : RayTheFireFly_61
- Track 81 : Hedwig_57
- Track 82 : Dmitri_53
- Track 83 : Squiddly_84
- Track 84 : CherryTomatoes_47
- Track 85 : SCentae_45, Pupper_45
- Track 86 : Sour_51
- Track 87 : Coldpizza_48

- Track 88 : Evaa_48
- Track 89 : Sisko_47, AnClar_48, Yago84_47
- Track 90 : LittleMunchkin_50
- Track 91 : Ligma_48, Fresco_48, Axumite_48, Shatter_48
- Track 92 : Mariokart_48
- Track 93 : BiggityBass_47
- Track 94 : CharlottesWeb_47
- Track 95 : Stormageddon_88, RedWattleHog_91
- Track 96 : Wolfstar_76
- Track 97 : Tandem_71, Pioneer3_71, Hortus1_71, OlinDD_71
- Track 98 : Platte_71
- Track 99 : Zizzle_64, Rita_61, DeadP_66, Soul22_66, Martik_60, AlpineSix_65, Koella_54, Zapner_73, CaptainTrips_57, Maravista_61, Totinger_59, Rockne_61, Eish_64, James_64, Pippy_58, SG4_57, FreddyB_61, LastJedi_54, Dorothy_58, Crumble_55, Seabastian_65, Taj_64, Jinglebell_65, Ochi17_63, Karhdo_57, Jabbarwokie_74, GUmbie_58, Lizziana_66, Priscilla_60, Whouxphf_57, Zerg_60, VRedHorse_60, Dante_61, Chuckly_63, PMC_57, Modragons_64, Blarby_72, Boomer_65, Mattes_64, Firehouse51_61, Inventum_55, OwlsT2W_60, Mutaforma13_64, Starcevich_60, ShowerHandel_63, SiSi_58, Burwell21_58, SwagPiggett_65, Hegedechwinu_60, Pollywog_61, Saal_62, BuzzLyseyear_66, Alexphander_64, OlympiaSaint_62, DaWorst_61, IbOuu_61, Yorick_59, Wee_64, Sassafras_58, OfUltron_65, Oksu_64, Llama_65, MinionDave_59, Brocalys_55, BobaPhett_64, Enby_61, ShiLan_59, NormanBulbieJr_60, Clifton_55, Eradicator_53, Cabrinians_61, Gorge_64, LittleShirley_59, Polka14_58
- Track 100 : Phanphagia_57, Beakin_61, DLane_55, ArcusAngelus_62, TDanisky_67, Bobi_65, Ms6_55, Melissauren88_58, PopTart_54, SuperGrey_63, SassyB_54, Ardmore_52, Kenuha5_57, Chevrolet_65, Sparkdehily_67, Tweety_59
- Track 101 : Llij_56, Phatniss_58, Job42_62, UncleRicky_59, Nivrat_56, Avani_68, Drago_58, QuickMath_62, DirtMcgirt_59, Lorde_60, Kimberlium_63, Jarcob_60, LilMoolah_58, MulchExplorer_67, Estave1_63, DRBy19_63, Kersh_62, Veteran_57, Philus_63, Rialto_66
- Track 102 : Plumbus_62, Daenerys_54, ByChance_52, Pacc40_54, KingMidas_59, BodEinwohner17_60, Empress_58, Leozinho_59, Leperchaun_52, DosHalletts_62, Tootsieroll_61, JoeyJr_55, Doomphist_60, Poenanya_60, PHappiness_55, DaddyRickover_59, Spoonbill_57, RitaG_55
- Track 103 : Harley_62
- Track 104 : Sarma624_56, BigPhil_54, Kingsley_55, MulchExplorer_64, Cerasum_54, Harley_61, Starcevich_57, Che8_63, Coco12_57, Ovechkin_57, Seagreen_58, Kimberlium_60, QuickMath_59, Demsculpinboyz_68, JalFarm20_71, Velveteen_53, Che9d_66, Juice456_59, Cornie_53, Royals2015_61
- Track 105 : Sarma624_57, BigPhil_55, Kingsley_56, MulchExplorer_65, DotProduct_54, Cerasum_55, QuickMath_60, Che8_64, Starcevich_58, Ovechkin_58, Seagreen_59, Kimberlium_61, JalFarm20_72, Velveteen_54, Juniper1_57, Che9d_67, Juice456_60, Coco12_58, Cornie_54, Royals2015_62
- Track 106 : Scottish_58, Blexus_58, ShroomBoi_62, EleanorGeorge_61, Mova_61, KristaRAM_63, Gandalph_63, MadMen_58, Madiba_58
- Track 107 : IMpilo_55
- Track 108 : RockyHorror_61, Doug_62
- Track 109 : SimranZ1_60, Phasih_58, Fastidio_60, DillTech15_57, Ibhubes_i_60, Sabbb_64, Demsculpinboyz_71
- Track 110 : Girafales_69, Quico_68, Florinda_71, Minnie_63, Bipolar_58, Fruitloop_57, Sandalphon_61
- Track 111 : Moonbeam_58

- Track 112 : Akhila_51, MilanaBonita_50, Whatsapiecost_60, Hamulus_61, Ogopogo_65, Flathead_60
- Track 113 : Filuzino_58, StAnnes_58, XFactor_58
- Track 114 : DotProduct_53
- Track 115 : Radiance_59
- Track 116 : IMpilo_54, Juniper1_56
- Track 117 : LunaBlu_62, GigiOuiOui_56, Girr_58, Ruby_56, IrishSherpFalk_61, Mozy_69, Mahavrat_58, WillSterrel_61, Latretium_62, Cornie_56, Spartacus_62, MisterCuddles_58, Galactic_59
- Track 118 : Fancypants_62, BlueCrab_60, Byougenkin_58
- Track 119 : Marker_62, Spikelee_67, OldBen_57
- Track 120 : Donkeykong_63, Squirty_62, Shauna1_58
- Track 121 : Bubbles123_56
- Track 122 : Hlubikazi_56, Mandlovu_56, Strokeseat_56
- Track 123 : MilleniumForce_63, Ramsey_59, Batiatus_58, Aubs_60
- Track 124 : Krakatau_57
- Track 125 : Juniper1_59
- Track 126 : PhesterPhotato_60, Phalconet_58
- Track 127 : Cornucopia_62
- Track 128 : Hades_61
- Track 129 : Wachhund_61
- Track 130 : Emma_61
- Track 131 : Yoshi_73, ThetaBob_65
- Track 132 : Demsculpinboyz_69
- Track 133 : TChen_61, LunaStella_59
- Track 134 : LunaStella_56, Yoshi_70, ThetaBob_62, TChen_58
- Track 135 : LunaStella_57, Renaud18_64, Yoshi_71, ThetaBob_63, TChen_59
- Track 136 : Renaud18_66
- Track 137 : Renaud18_63
- Track 138 : Mufasa8_70
- Track 139 : Sonali_65
- Track 140 : Prairie_53
- Track 141 : Bumble_49
- Track 142 : Klevey_55
- Track 143 : Bolt007_53
- Track 144 : Altadena_50
- Track 145 : Lilmac1015_57, CalWood4100_57
- Track 146 : Vibaki_44
- Track 147 : Hirko_43
- Track 148 : BlackSpider_67
- Track 149 : Zucker_73
- Track 150 : Blett_57
- Track 151 : Bush_58
- Track 152 : Antuna_59
- Track 153 : Pickles13_57
- Track 154 : Phonegingi_58
- Track 155 : Appa_57, Dropshot_57
- Track 156 : MenE_59
- Track 157 : Warren_57
- Track 158 : Bagrid_145, Dove_130, NihilNomen_146, Minerva_144, Halley_146, Optimus_135, Wanda_144, Odette_148, DmpstrDiver_145, Ejimix_137, Klein_142, Zelink_139, Kalah2_135, BAKA_144, EricMillard_136, Hughesyang_143, JuicyJay_140, Constella_138, Schatzie_140, Duke13_140, ThreeRngTarjay_139,

Dallas_145, Beem_146, Phoebus_144, Bombitas_132

- Track 159 : Pound_136
- Track 160 : Porcelain_140, Yeet_138, MiaZeal_143, Redno2_139, Lucky2013_136, HokkenD_137, KashFlow_143
- Track 161 : Bobby_134
- Track 162 : Thibault_127
- Track 163 : StAugustine_149
- Track 164 : Footloose_58

Summary of Final Annotations (See graph section above for start numbers):

The start number called the most often in the published annotations is 81, it was called in 229 of the 426 non-draft genes in the pham.

Genes that call this "Most Annotated" start:

- Akhila_51, Alexphander_64, AlpineSix_65, ArcusAngelus_62, Ardmore_52, Aubs_60, Avani_68, Batiatus_58, Beakin_61, BigPhil_55, Bipolar_58, Blarby_72, Blexus_58, BlueCrab_60, BobaPhett_64, Bobi_65, BodEinwohner17_60, Boomer_65, Brocalys_55, Bubbles123_56, Burwell21_58, BuzzLyseyear_66, ByChance_52, Byougenkin_58, Cabrinians_61, CaptainTrips_57, Cerasum_55, CharlottesWeb_47, Che8_64, Che9d_67, Chevrolet_65, Chuckly_63, Clifton_55, Coco12_58, Cornie_54, Cornie_56, Cornucopia_62, Crumble_55, DLane_55, DRBy19_63, DaWorst_61, DaddyRickover_59, Daenerys_54, Dante_61, DeadP_66, Demsculpinboyz_69, Demsculpinboyz_71, DillTech15_57, DirtMcgirt_59, Donkeykong_63, Doomphist_60, Dorothy_58, DosHalletts_62, DotProduct_54, Doug_62, Drago_58, Eish_64, EleanorGeorge_61, Emma_61, Empress_58, Enby_61, Eradicator_53, Estave1_63, Fancypants_62, Fastidio_60, Filuzino_58, Firehouse51_61, Flathead_60, Florinda_71, Footloose_58, FreddyB_61, Fruitloop_57, GUmbe_58, Galactic_59, Gandolph_63, GigiOuiOui_56, Girafales_69, Girr_58, Gorge_64, Hades_61, Hamulus_61, Harley_62, Hegedechwinu_60, Hlubikazi_56, IbOuu_61, Ibhuesi_60, Inventum_55, IrishSherpFalk_61, Jabbawokkie_74, JalFarm20_72, James_64, Jarcob_60, Jinglebell_65, Job42_62, JoeyJr_55, Juice456_60, Juniper1_57, Juniper1_59, Karhdo_57, Kenuha5_57, Kersh_62, Kimberlium_61, Kimberlium_63, KingMidas_59, Kingsley_56, Koella_54, Krakatau_57, KristaRAM_63, LastJedi_54, Latretium_62, Leozinho_59, Leperchaun_52, LilMoolah_58, LittleShirley_59, Lizziana_66, Llama_65, Llij_56, Lorde_60, LunaBlu_62, LunaStella_57, LunaStella_59, MadMen_58, Madiba_58, Mahavrat_58, Mandlovu_56, Maravista_61, Mariokart_48, Marker_62, Martik_60, Mattes_64, Melissauren88_58, MilanaBonita_50, MilleniumForce_63, MinionDave_59, Minnie_63, MisterCuddles_58, Modragons_64, Moonbeam_58, Mova_61, Mozy_69, Ms6_55, MulchExplorer_65, MulchExplorer_67, Mutaforma13_64, Nivrat_56, NormanBulbieJr_60, Ochi17_63, OfUltron_65, Ogotogo_65, Oksu_64, OldBen_57, OlympiaSaint_62, Ovechkin_58, OwlsT2W_60, PHappiness_55, PMC_57, Pacc40_54, Phalconet_58, Phanphagia_57, Phasih_58, Phatniss_58, PhesterPhotato_60, Philus_63, Pippy_58, Plumbus_62, Poenanya_60, Polka14_58, Pollywog_61, PopTart_54, Priscilla_60, QuickMath_60, QuickMath_62, Quico_68, Radiance_59, Ramsey_59, Renaud18_64, Renaud18_66, Rialto_66, RitaG_55, Rita_61, Rockne_61, RockyHorror_61, Royals2015_62, Ruby_56, SG4_57, Saal_62, Sabb_64, Sandalphon_61, Sarma624_57, Sassafras_58, SassyB_54, Scottish_58, Seabastian_65, Seagreen_59, Shauna1_58, ShiLan_59,

ShowerHandel_63, ShroomBoi_62, SiSi_58, SimranZ1_60, Soul22_66, Sparkdehlily_67, Spartacus_62, Spikelee_67, Spoonbill_57, Squiddly_84, Squirty_62, StAnnes_58, Starcevich_58, Starcevich_60, Strokeseat_56, SuperGrey_63, SwagPiggett_65, TChen_59, TChen_61, TDanisky_67, Taj_64, ThetaBob_63, ThetaBob_65, Tootsieroll_61, Totinger_59, Tweety_59, UncleRicky_59, VRedHorse_60, Velveteen_54, Veteran_57, Wachhund_61, Wee_64, Whatsapiecost_60, Whouxphf_57, WillSterrel_61, XFactor_58, Yorick_59, Yoshi_71, Yoshi_73, Zapner_73, Zerg_60, Zizzle_64,

Genes that have the "Most Annotated" start but do not call it:

- Hawkeye_86, IMpilo_55, Sour_51,

Genes that do not have the "Most Annotated" start:

- AGrandiflora_48, AbbyDaisy_79, Abidatro_30, Aikyam_75, Altadena_50, Amyev_46, AnClar_48, Andrew_32, Anekin_78, Antuna_59, Appa_57, Archis_54, Ascela_45, Auxilium_74, Axumite_48, BAKA_144, Bagrid_145, Barco_49, Basilisk_31, Bedetta_35, Beem_146, Begonia_49, BenchScraper_76, BigPhil_54, BiggityBass_47, BillyTP_77, BlackSpider_67, Blett_57, BlingBling_48, Bobby_134, Bolt007_53, Bombitas_132, Bumble_49, Bush_58, CalWood4100_57, Camara_31, CaptainKirk2_51, Cassia_45, Cerasum_54, Che8_63, Che9d_66, CherryTomatoes_47, Chickaboom_31, Coco12_57, Coldpizza_48, Colusalem_34, Community_48, Constella_138, CookieBear_73, Cornie_53, Crewmate_51, Cyan_46, Dallas_145, Delian_54, Demsculpinboyz_68, DirtyBoi_56, Dmitri_53, DmpstrDiver_145, DotProduct_53, Dove_130, DrSierra_43, Dropshot_57, Duke13_140, Eesa_29, Ejimix_137, EricMillard_136, Evaa_48, EvePickles_75, Faja_79, Fenry_49, Fresco_48, Globfish_75, Gorpy_74, Greely_69, Guacamole_48, Halley_146, Harley_61, Hedwig_57, Hestia_70, Hillester_80, Hirko_43, Hitter_51, HokkenD_137, Hortus1_71, Hughesyang_143, IMpilo_54, Isolde_74, Iter_45, IttyBittyPiggy_45, JalFarm20_71, Jalammah_54, Jamun_29, Janeemi_48, JasperJr_48, Jerole_38, Joemato_46, JohnDoe_46, Juice456_59, JuicyJay_140, JuneStar_48, Juniper1_56, Juno112_30, KHumphrey_31, Kalah2_135, KashFlow_143, Kaylissa_47, Kimberlium_60, Kingsley_55, Klein_142, Klevey_55, Lawnathon_76, Lego_45, Liebe_46, Ligma_48, Lilmac1015_57, LittleMunchkin_50, LittleTokyo_33, Lizalica_44, Lucky2013_136, LunaStella_56, Lysidious_52, MaGuCo_43, Malachai_49, MalagasyRose_65, Maureen_46, Melba_50, Mellie_49, MenE_59, MiaZeal_143, MidnightRain_81, Minerva_144, MintFen_51, Mudpuppy_42, Mufasa8_70, MulchExplorer_64, Myrna_64, NihilNomen_146, Nitro_44, ObiToo_51, Odette_148, OlinDD_71, Optimus_135, Orcanus_30, Ovechkin_57, Persistence_70, Phabba_70, Phives_50, PhluffyCoco_31, Phoebus_144, Phonegingi_58, Phrank15_80, Phrappuccino_165, Pickles13_57, Pioneer3_71, Pixelle_47, Platte_71, Polka_32, Porcelain_140, Pound_136, Powerpuff_48, Prairie_53, Pumpkins_45, Pupper_45, QuickMath_59, RadFad_81, Raphaella_77, Raqqa_74, RayTheFireFly_61, RedFox_31, RedWattleHog_91, Redno2_139, Renaud18_63, Renna12_30, Richie_79, Royals2015_61, Ruchi_30, SCentae_45, Sakai_73, Samba_50, Sarma624_56, Sashimi_76, Schatzie_140, ScoobyDoobyDoo_55, Seagreen_58, Seahorse_84, Settecandela_165, Shatter_48, Simpson_48, Sisko_47, Sonali_65, SpicyFrank_78, StAugustine_149, Starcevich_57, Stormageddon_88, TChen_58, Tandem_71, TaylorSipht_30, Tbone_46, ThayneTheZag_81, ThetaBob_62, Thibault_127, ThreeRngTarjay_139, Tian_45, Tiff81_77, Tuck_49, Tutumahutu_47, Utz_44, Velveteen_53, Vibaki_44, Vulpecula_30, Wanda_144, Warda_46, Warren_57, Wildwest_45, Wisp_50, Wolfstar_76, Yago84_47, Yang_46, Yeet_138, YesChef_46, Yoshi_70, YoungHarleezy_74, Zarbodnamra_50, Zelink_139, ZiggyZoo_51, Zucker_73,

Summary by start number:

Start 64:

- Found in 1 of 467 (0.2%) of genes in pham
- Manual Annotations of this start: 1 of 426
- Called 100.0% of time when present
- Phage (with cluster) where this start called: Sour_51 (DR),

Start 65:

- Found in 13 of 467 (2.8%) of genes in pham
- Manual Annotations of this start: 10 of 426
- Called 84.6% of time when present
- Phage (with cluster) where this start called: AnClar_48 (DR), Axumite_48 (DR), BiggityBass_47 (DR), Coldpizza_48 (DR), Evaa_48 (DR), Fresco_48 (DR), Ligma_48 (DR), LittleMunchkin_50 (DR), Shatter_48 (DR), Sisko_47 (DR), Yago84_47 (DR),

Start 66:

- Found in 5 of 467 (1.1%) of genes in pham
- Manual Annotations of this start: 3 of 426
- Called 80.0% of time when present
- Phage (with cluster) where this start called: Greely_69 (C2), Myrna_64 (C2), Phabba_70 (C2), ScoobyDoobyDoo_55 (C2),

Start 74:

- Found in 2 of 467 (0.4%) of genes in pham
- Manual Annotations of this start: 2 of 426
- Called 100.0% of time when present
- Phage (with cluster) where this start called: Altadena_50 (FH), Bumble_49 (FH),

Start 76:

- Found in 4 of 467 (0.9%) of genes in pham
- Manual Annotations of this start: 1 of 426
- Called 25.0% of time when present
- Phage (with cluster) where this start called: Mellie_49 (CV),

Start 77:

- Found in 26 of 467 (5.6%) of genes in pham
- Manual Annotations of this start: 23 of 426
- Called 92.3% of time when present
- Phage (with cluster) where this start called: Archis_54 (CV), Barco_49 (CV), Begonia_49 (CV), BlingBling_48 (CV), CaptainKirk2_51 (CV), Delian_54 (CV), DirtyBoi_56 (DB), Dmitri_53 (DB), Fenry_49 (CV), Guacamole_48 (CV), Hedwig_57 (DB), Hitter_51 (CV), Jalammah_54 (CV), JasperJr_48 (CV), Lysidious_52 (CV), Malachai_49 (CV), Melba_50 (CV), MintFen_51 (CV), RayTheFireFly_61 (DB), Samba_50 (CV), Utz_44 (CV), Wisp_50 (CV), Zarbodnamra_50 (CV), ZiggyZoo_51 (CV),

Start 78:

- Found in 29 of 467 (6.2%) of genes in pham
- Manual Annotations of this start: 1 of 426
- Called 3.4% of time when present
- Phage (with cluster) where this start called: Sonali_65 (FG),

Start 81:

- Found in 241 of 467 (51.6%) of genes in pham
- Manual Annotations of this start: 229 of 426
- Called 98.8% of time when present
- Phage (with cluster) where this start called: Akhila_51 (F1), Alexphander_64 (F1), AlpineSix_65 (F1), ArcusAngelus_62 (F1), Ardmore_52 (F1), Aubs_60 (F1), Avani_68 (F2), Batiatus_58 (F1), Beakin_61 (F1), BigPhil_55 (F1), Bipolar_58 (F1), Blarby_72 (F), Blexus_58 (F1), BlueCrab_60 (F1), BobaPhett_64 (F1), Bobi_65 (F1), BodEinwohner17_60 (F1), Boomer_65 (F1), Brocalys_55 (F1), Bubbles123_56 (F1), Burwell21_58 (F1), BuzzLyseyear_66 (F1), ByChance_52 (F1), Byougenkin_58 (F1), Cabrinians_61 (F1), CaptainTrips_57 (F1), Cerasum_55 (F1), CharlottesWeb_47 (DR), Che8_64 (F1), Che9d_67 (F2), Chevrolet_65 (F1), Chuckly_63 (F1), Clifton_55 (F1), Coco12_58 (F1), Cornie_54 (F5), Cornie_56 (F5), Cornucopia_62 (F1), Crumble_55 (F1), DLane_55 (F1), DRBy19_63 (F1), DaWorst_61 (F1), DaddyRickover_59 (F1), Daenerys_54 (F1), Dante_61 (F1), DeadP_66 (F1), Demsculpinboyz_69 (F2), Demsculpinboyz_71 (F2), DillTech15_57 (F1), DirtMcgirt_59 (F1), Donkeykong_63 (F1), Doomphist_60 (F1), Dorothy_58 (F1), DosHalletts_62 (F1), DotProduct_54 (F1), Doug_62 (F1), Drago_58 (F1), Eish_64 (F1), EleanorGeorge_61 (F1), Emma_61 (F1), Empress_58 (F1), Enby_61 (F1), Eradicator_53 (F1), Estave1_63 (F1), Fancypants_62 (F1), Fastidio_60 (F1), Filuzino_58 (F1), Firehouse51_61 (F1), Flathead_60 (F1), Florinda_71 (F1), Footloose_58 (singleton), FreddyB_61 (F1), Fruitloop_57 (F1), GUmbie_58 (F1), Galactic_59 (F1), Gandolph_63 (F1), GigiOuiOui_56 (F1), Girafales_69 (F1), Girr_58 (F1), Gorge_64 (F1), Hades_61 (F1), Hamulus_61 (F1), Harley_62 (F1), Hegedechwinu_60 (F1), Hlubikazi_56 (F1), IbOuu_61 (F1), Ibhubesi_60 (F1), Inventum_55 (F1), IrishSherpFalk_61 (F1), Jabbawokkie_74 (F2), JalFarm20_72 (F1), James_64 (F1), Jacob_60 (F1), Jinglebell_65 (F1), Job42_62 (F1), JoeyJr_55 (F1), Juice456_60 (F1), Juniper1_57 (F1), Juniper1_59 (F1), Karhdo_57 (F1), Kenuha5_57 (F1), Kersh_62 (F1), Kimberlium_61 (F1), Kimberlium_63 (F1), KingMidas_59 (F1), Kingsley_56 (F1), Koella_54 (F1), Krakatau_57 (F1), KristaRAM_63 (F1), LastJedi_54 (F1), Latretium_62 (F1), Leozinho_59 (F1), Leperchaun_52 (F1), LilMoolah_58 (F1), LittleShirley_59 (F1), Lizziana_66 (F1), Llama_65 (F1), Llij_56 (F1), Lorde_60 (F1), LunaBlu_62 (F1), LunaStella_57 (F4), LunaStella_59 (F4), MadMen_58 (F1), Madiba_58 (F1), Mahavrat_58 (F1), Mandlovu_56 (F1), Maravista_61 (F1), Mariokart_48 (DR), Marker_62 (F1), Martik_60 (F1), Mattes_64 (F1), Melissauren88_58 (F1), MilanaBonita_50 (F1), MilleniumForce_63 (F1), MinionDave_59 (F1), Minnie_63 (F1), MisterCuddles_58 (F1), Modragons_64 (F1), Moonbeam_58 (F1), Mova_61 (F1), Mozy_69 (F1), Ms6_55 (F1), MulchExplorer_65 (F1), MulchExplorer_67 (F1), Mutaforma13_64 (F1), Nivrat_56 (F1), NormanBulbieJr_60 (F1), Ochi17_63 (F1), OfUltron_65 (F1), Ogopogo_65 (F1), Oksu_64 (F1), OldBen_57 (F1), OlympiaSaint_62 (F1), Ovechkin_58 (F1), OwlsT2W_60 (F1), PHappiness_55 (F1), PMC_57 (F1), Pacc40_54 (F1), Phalconet_58 (F1), Phanphagia_57 (F1), Phasih_58 (F1), Phatniss_58 (F1), PhesterPotato_60 (F1), Philus_63 (F1), Pippy_58 (F1), Plumbus_62 (F1), Poenanya_60 (F1), Polka14_58 (F1), Pollywog_61 (F1), PopTart_54 (F1), Priscilla_60 (F1), QuickMath_60 (F1), QuickMath_62 (F1), Quico_68 (F1), Radiance_59 (F1), Ramsey_59 (F1), Renaud18_64 (F4), Renaud18_66 (F4), Rialto_66 (F1), RitaG_55 (F1), Rita_61 (F1), Rockne_61 (F1), RockyHorror_61 (F1), Royals2015_62 (F1), Ruby_56 (F1), SG4_57 (F1), Saal_62 (F1), Sabbb_64 (F1), Sandalphon_61 (F1), Sarma624_57 (F1), Sassafras_58 (F1), SassyB_54 (F1), Scottish_58 (F1), Seabastian_65 (F1), Seagreen_59 (F1), Shauna1_58 (F1), ShiLan_59 (F1), ShowerHandel_63 (F1), ShroomBoi_62 (F1),

SiSi_58 (F1), SimranZ1_60 (F1), Soul22_66 (F2), Sparkdehlily_67 (F1), Spartacus_62 (F1), Spikelee_67 (F1), Spoonbill_57 (F1), Squiddly_84 (DN2), Squirty_62 (F3), StAnnes_58 (F1), Starceвич_58 (F1), Starceвич_60 (F1), Strokeseat_56 (F1), SuperGrey_63 (F1), SwagPigglett_65 (F1), TChen_59 (F4), TChen_61 (F4), TDanisky_67 (F1), Taj_64 (F1), ThetaBob_63 (F4), ThetaBob_65 (F4), Tootsieroll_61 (F1), Totinger_59 (F1), Tweety_59 (F1), UncleRicky_59 (F1), VRedHorse_60 (F1), Velveteen_54 (F1), Veteran_57 (F1), Wachhund_61 (F1), Wee_64 (F1), Whatsapiecost_60 (F1), Whouxphf_57 (F1), WillSterrel_61 (F1), XFactor_58 (F1), Yorick_59 (F1), Yoshi_71 (F2), Yoshi_73 (F2), Zapner_73 (F2), Zerg_60 (F1), Zizzle_64 (F1),

Start 82:

- Found in 28 of 467 (6.0%) of genes in pham
- Manual Annotations of this start: 26 of 426
- Called 100.0% of time when present
- Phage (with cluster) where this start called: BigPhil_54 (F1), Cerasum_54 (F1), Che8_63 (F1), Che9d_66 (F2), Coco12_57 (F1), Cornie_53 (F5), Demsculpinboyz_68 (F2), DotProduct_53 (F1), Harley_61 (F1), IMpilo_54 (F1), JalFarm20_71 (F1), Juice456_59 (F1), Juniper1_56 (F1), Kimberlium_60 (F1), Kingsley_55 (F1), LunaStella_56 (F4), MulchExplorer_64 (F1), Ovechkin_57 (F1), QuickMath_59 (F1), Renaud18_63 (F4), Royals2015_61 (F1), Sarma624_56 (F1), Seagreen_58 (F1), Starceвич_57 (F1), TChen_58 (F4), ThetaBob_62 (F4), Velveteen_53 (F1), Yoshi_70 (F2),

Start 83:

- Found in 1 of 467 (0.2%) of genes in pham
- Manual Annotations of this start: 1 of 426
- Called 100.0% of time when present
- Phage (with cluster) where this start called: Hawkeye_86 (D2),

Start 84:

- Found in 35 of 467 (7.5%) of genes in pham
- Manual Annotations of this start: 33 of 426
- Called 100.0% of time when present
- Phage (with cluster) where this start called: BAKA_144 (J), Bagrid_145 (J), Beem_146 (J), Bobby_134 (J), Bombitas_132 (J), Constella_138 (J), Dallas_145 (J), DmpstrDiver_145 (J), Dove_130 (J), Duke13_140 (J), Ejimix_137 (J), EricMillard_136 (J), Halley_146 (J), HokkenD_137 (J), Hughesyang_143 (J), JuicyJay_140 (J), Kalah2_135 (J), KashFlow_143 (J), Klein_142 (J), Lucky2013_136 (J), MiaZeal_143 (J), Minerva_144 (J), NihilNomen_146 (J), Odette_148 (J), Optimus_135 (J), Phoebus_144 (J), Porcelain_140 (J), Pound_136 (J), Redno2_139 (J), Schatzie_140 (J), Thibault_127 (J), ThreeRngTarjay_139 (J), Wanda_144 (J), Yeet_138 (J), Zelink_139 (J),

Start 85:

- Found in 13 of 467 (2.8%) of genes in pham
- Manual Annotations of this start: 9 of 426
- Called 92.3% of time when present
- Phage (with cluster) where this start called: Abidatro_30 (AS1), Basilisk_31 (AS1), Bedetta_35 (AS2), Colusalem_34 (AS2), Eesa_29 (AS1), Jamun_29 (AS1), Jerole_38 (AS2), Orcanus_30 (AS1), Polka_32 (AS2), Ruchi_30 (AS1), TaylorSipt_30 (AS1), Vulpecula_30 (AS1),

Start 86:

- Found in 1 of 467 (0.2%) of genes in pham
- No Manual Annotations of this start.
- Called 100.0% of time when present
- Phage (with cluster) where this start called: StAugustine_149 (singleton),

Start 87:

- Found in 1 of 467 (0.2%) of genes in pham
- Manual Annotations of this start: 1 of 426
- Called 100.0% of time when present
- Phage (with cluster) where this start called: Mufasa8_70 (FG),

Start 88:

- Found in 7 of 467 (1.5%) of genes in pham
- Manual Annotations of this start: 6 of 426
- Called 100.0% of time when present
- Phage (with cluster) where this start called: Bolt007_53 (FH), CalWood4100_57 (FH), Klevey_55 (FH), Lilmac1015_57 (FH), Prairie_53 (FH), RedWattleHog_91 (DX), Stormageddon_88 (DX),

Start 89:

- Found in 31 of 467 (6.6%) of genes in pham
- Manual Annotations of this start: 19 of 426
- Called 96.8% of time when present
- Phage (with cluster) where this start called: AbbyDaisy_79 (AY), Aikyam_75 (AY), Anekin_78 (AY), Auxilium_74 (AY), BenchScraper_76 (AY), BillyTP_77 (AY), BlackSpider_67 (FN), CookieBear_73 (AY), EvePickles_75 (AY), Faja_79 (AY), Globfish_75 (AY), Gorpy_74 (AY), Hestia_70 (AY), Hillester_80 (AY), Isolde_74 (AY), Lawnathon_76 (AY), MidnightRain_81 (AY), Persistence_70 (AY), Phrank15_80 (AY), RadFad_81 (AY), Raphaella_77 (AY), Richie_79 (AY), Sakai_73 (AY), Sashimi_76 (AY), Seahorse_84 (AY), SpicyFrank_78 (AY), ThayneTheZag_81 (AY), Tiff81_77 (AY), YoungHarleezy_74 (AY), Zucker_73 (FN),

Start 90:

- Found in 2 of 467 (0.4%) of genes in pham
- Manual Annotations of this start: 1 of 426
- Called 50.0% of time when present
- Phage (with cluster) where this start called: Phives_50 (AZ1),

Start 91:

- Found in 9 of 467 (1.9%) of genes in pham
- Manual Annotations of this start: 6 of 426
- Called 88.9% of time when present
- Phage (with cluster) where this start called: Andrew_32 (AS3), Camara_31 (AS3), Juno112_30 (AS3), LittleTokyo_33 (AS2), MalagasyRose_65 (AG), PhluffyCoco_31 (AS3), RedFox_31 (AS3), Renna12_30 (AS3),

Start 92:

- Found in 47 of 467 (10.1%) of genes in pham
- Manual Annotations of this start: 34 of 426
- Called 83.0% of time when present
- Phage (with cluster) where this start called: AGrandiflora_48 (AZ1), Amyev_46 (AZ1), Ascela_45 (AZ1), Cassia_45 (AZ1), Community_48 (AZ1), Crewmate_51

(AZ1), Cyan_46 (AZ1), DrSierra_43 (AZ1), Hirko_43 (FL), Iter_45 (AZ1), IttyBittyPiggy_45 (AZ1), Janeemi_48 (AZ1), Joemato_46 (AZ1), JohnDoe_46 (AZ1), JuneStar_48 (AZ1), Kaylissa_47 (AZ1), Lego_45 (AZ1), Liebe_46 (AZ2), Lizalica_44 (AZ1), MaGuCo_43 (AZ2), Maureen_46 (AZ2), Mudpuppy_42 (AZ1), Nitro_44 (AZ1), ObiToo_51 (AZ1), Phrappuccino_165 (AA), Pixelle_47 (AZ1), Powerpuff_48 (AZ1), Pumpkins_45 (AZ1), Settecandela_165 (AA), Simpson_48 (AZ1), Tbone_46 (AZ1), Tian_45 (AZ1), Tuck_49 (AZ1), Tutumahutu_47 (AZ1), Vibaki_44 (FL), Warda_46 (AZ1), Wildwest_45 (AZ1), Yang_46 (AZ1), YesChef_46 (AZ1),

Start 93:

- Found in 3 of 467 (0.6%) of genes in pham
- Manual Annotations of this start: 3 of 426
- Called 100.0% of time when present
- Phage (with cluster) where this start called: CherryTomatoes_47 (DO), Pupper_45 (DO), SCentae_45 (DO),

Start 96:

- Found in 9 of 467 (1.9%) of genes in pham
- Manual Annotations of this start: 9 of 426
- Called 100.0% of time when present
- Phage (with cluster) where this start called: Antuna_59 (GA), Appa_57 (GA), Blett_57 (GA), Bush_58 (GA), Dropshot_57 (GA), MenE_59 (GA), Phonegingi_58 (GA), Pickles13_57 (GA), Warren_57 (GA),

Start 97:

- Found in 6 of 467 (1.3%) of genes in pham
- Manual Annotations of this start: 6 of 426
- Called 100.0% of time when present
- Phage (with cluster) where this start called: Hortus1_71 (ED1), OlinDD_71 (ED1), Pioneer3_71 (ED1), Platte_71 (ED1), Tandem_71 (ED1), Wolfstar_76 (ED),

Start 100:

- Found in 258 of 467 (55.2%) of genes in pham
- No Manual Annotations of this start.
- Called 0.4% of time when present
- Phage (with cluster) where this start called: IMpilo_55 (F1),

Start 101:

- Found in 13 of 467 (2.8%) of genes in pham
- Manual Annotations of this start: 2 of 426
- Called 23.1% of time when present
- Phage (with cluster) where this start called: Chickaboom_31 (AS1), KHumphrey_31 (AS3), Raqqa_74 (AY),

Summary by clusters:

There are 31 clusters represented in this pham: DO, singleton, DB, ED1, DX, FG, FH, DR, FN, FL, DN2, C2, AS3, AS2, AS1, AA, AG, F, ED, J, GA, AY, CV, F1, F2, F3, F4, F5, AZ1, AZ2, D2,

Info for manual annotations of cluster AA:

- Start number 92 was manually annotated 2 times for cluster AA.

Info for manual annotations of cluster AG:

- Start number 91 was manually annotated 1 time for cluster AG.

Info for manual annotations of cluster AS1:

- Start number 85 was manually annotated 8 times for cluster AS1.
- Start number 101 was manually annotated 1 time for cluster AS1.

Info for manual annotations of cluster AS2:

- Start number 85 was manually annotated 1 time for cluster AS2.
- Start number 91 was manually annotated 1 time for cluster AS2.

Info for manual annotations of cluster AS3:

- Start number 91 was manually annotated 4 times for cluster AS3.
- Start number 101 was manually annotated 1 time for cluster AS3.

Info for manual annotations of cluster AY:

- Start number 89 was manually annotated 18 times for cluster AY.

Info for manual annotations of cluster AZ1:

- Start number 90 was manually annotated 1 time for cluster AZ1.
- Start number 92 was manually annotated 27 times for cluster AZ1.

Info for manual annotations of cluster AZ2:

- Start number 92 was manually annotated 3 times for cluster AZ2.

Info for manual annotations of cluster C2:

- Start number 66 was manually annotated 3 times for cluster C2.

Info for manual annotations of cluster CV:

- Start number 76 was manually annotated 1 time for cluster CV.
- Start number 77 was manually annotated 19 times for cluster CV.

Info for manual annotations of cluster D2:

- Start number 83 was manually annotated 1 time for cluster D2.

Info for manual annotations of cluster DB:

- Start number 77 was manually annotated 4 times for cluster DB.

Info for manual annotations of cluster DN2:

- Start number 81 was manually annotated 1 time for cluster DN2.

Info for manual annotations of cluster DO:

- Start number 93 was manually annotated 3 times for cluster DO.

Info for manual annotations of cluster DR:

- Start number 64 was manually annotated 1 time for cluster DR.
- Start number 65 was manually annotated 10 times for cluster DR.
- Start number 81 was manually annotated 1 time for cluster DR.

Info for manual annotations of cluster DX:

- Start number 88 was manually annotated 2 times for cluster DX.

Info for manual annotations of cluster ED:

- Start number 97 was manually annotated 1 time for cluster ED.

Info for manual annotations of cluster ED1:

- Start number 97 was manually annotated 5 times for cluster ED1.

Info for manual annotations of cluster F1:

- Start number 81 was manually annotated 206 times for cluster F1.
- Start number 82 was manually annotated 18 times for cluster F1.

Info for manual annotations of cluster F2:

- Start number 81 was manually annotated 9 times for cluster F2.
- Start number 82 was manually annotated 3 times for cluster F2.

Info for manual annotations of cluster F3:

- Start number 81 was manually annotated 1 time for cluster F3.

Info for manual annotations of cluster F4:

- Start number 81 was manually annotated 8 times for cluster F4.
- Start number 82 was manually annotated 4 times for cluster F4.

Info for manual annotations of cluster F5:

- Start number 81 was manually annotated 2 times for cluster F5.
- Start number 82 was manually annotated 1 time for cluster F5.

Info for manual annotations of cluster FG:

- Start number 78 was manually annotated 1 time for cluster FG.
- Start number 87 was manually annotated 1 time for cluster FG.

Info for manual annotations of cluster FH:

- Start number 74 was manually annotated 2 times for cluster FH.
- Start number 88 was manually annotated 4 times for cluster FH.

Info for manual annotations of cluster FL:

- Start number 92 was manually annotated 2 times for cluster FL.

Info for manual annotations of cluster FN:

- Start number 89 was manually annotated 1 time for cluster FN.

Info for manual annotations of cluster GA:

- Start number 96 was manually annotated 9 times for cluster GA.

Info for manual annotations of cluster J:

- Start number 84 was manually annotated 33 times for cluster J.

Gene Information:

Gene: AGrandiflora_48 Start: 33790, Stop: 34203, Start Num: 92

Candidate Starts for AGrandiflora_48:

(Start: 92 @33790 has 34 MA's), (116, 33844), (151, 33970), (161, 34024), (204, 34177), (206, 34195),

Gene: AbbyDaisy_79 Start: 44094, Stop: 44489, Start Num: 89
Candidate Starts for AbbyDaisy_79:
(Start: 89 @44094 has 19 MA's), (Start: 101 @44118 has 2 MA's), (111, 44139), (143, 44265), (194, 44463),

Gene: Abidatro_30 Start: 21728, Stop: 21387, Start Num: 85
Candidate Starts for Abidatro_30:
(Start: 85 @21728 has 9 MA's), (Start: 101 @21707 has 2 MA's), (155, 21497), (183, 21401),

Gene: Aikyam_75 Start: 40510, Stop: 40911, Start Num: 89
Candidate Starts for Aikyam_75:
(28, 40264), (Start: 89 @40510 has 19 MA's), (143, 40678), (156, 40747),

Gene: Akhila_51 Start: 36387, Stop: 36752, Start Num: 81
Candidate Starts for Akhila_51:
(Start: 81 @36387 has 229 MA's), (100, 36420), (103, 36426), (112, 36438), (122, 36480), (129, 36510), (133, 36534), (134, 36537), (158, 36636), (159, 36642), (185, 36717), (187, 36720), (188, 36723),

Gene: Alexphander_64 Start: 40703, Stop: 41068, Start Num: 81
Candidate Starts for Alexphander_64:
(Start: 81 @40703 has 229 MA's), (100, 40736), (110, 40751), (112, 40754), (120, 40793), (122, 40796), (127, 40817), (133, 40850), (142, 40877), (151, 40910), (158, 40952), (159, 40958), (192, 41054),

Gene: AlpineSix_65 Start: 42816, Stop: 43181, Start Num: 81
Candidate Starts for AlpineSix_65:
(Start: 81 @42816 has 229 MA's), (100, 42849), (110, 42864), (112, 42867), (120, 42906), (122, 42909), (127, 42930), (133, 42963), (142, 42990), (151, 43023), (158, 43065), (159, 43071), (192, 43167),

Gene: Altadena_50 Start: 34978, Stop: 35370, Start Num: 74
Candidate Starts for Altadena_50:
(Start: 74 @34978 has 2 MA's), (123, 35077), (153, 35206), (170, 35281),

Gene: Amyev_46 Start: 34828, Stop: 35223, Start Num: 92
Candidate Starts for Amyev_46:
(8, 34264), (12, 34336), (13, 34345), (16, 34423), (35, 34654), (49, 34726), (Start: 92 @34828 has 34 MA's), (116, 34882), (151, 35008),

Gene: AnClar_48 Start: 43435, Stop: 43061, Start Num: 65
Candidate Starts for AnClar_48:
(Start: 65 @43435 has 10 MA's), (107, 43375), (126, 43312), (127, 43303), (156, 43183),

Gene: Andrew_32 Start: 21174, Stop: 20812, Start Num: 91
Candidate Starts for Andrew_32:
(Start: 91 @21174 has 6 MA's), (125, 21087), (154, 20958), (168, 20892),

Gene: Anekin_78 Start: 43082, Stop: 43483, Start Num: 89
Candidate Starts for Anekin_78:
(28, 42836), (Start: 89 @43082 has 19 MA's), (143, 43250), (156, 43319),

Gene: Antuna_59 Start: 34183, Stop: 34620, Start Num: 96

Candidate Starts for Antuna_59:

(13, 33676), (15, 33706), (Start: 96 @34183 has 9 MA's), (127, 34279), (133, 34306), (149, 34354), (160, 34411), (161, 34417), (166, 34438), (189, 34504), (196, 34534), (203, 34570),

Gene: Appa_57 Start: 33948, Stop: 34385, Start Num: 96

Candidate Starts for Appa_57:

(Start: 96 @33948 has 9 MA's), (127, 34044), (133, 34071), (149, 34119), (160, 34176), (161, 34182), (166, 34203), (189, 34269), (196, 34299), (200, 34323), (203, 34335),

Gene: Archis_54 Start: 35570, Stop: 35932, Start Num: 77

Candidate Starts for Archis_54:

(39, 35426), (45, 35462), (57, 35501), (Start: 77 @35570 has 23 MA's), (128, 35699), (133, 35723),

Gene: ArcusAngelus_62 Start: 40946, Stop: 41311, Start Num: 81

Candidate Starts for ArcusAngelus_62:

(Start: 81 @40946 has 229 MA's), (100, 40979), (103, 40985), (112, 40997), (122, 41039), (129, 41069), (133, 41093), (134, 41096), (158, 41195), (159, 41201), (185, 41276),

Gene: Ardmore_52 Start: 38473, Stop: 38838, Start Num: 81

Candidate Starts for Ardmore_52:

(Start: 81 @38473 has 229 MA's), (100, 38506), (103, 38512), (112, 38524), (122, 38566), (129, 38596), (133, 38620), (134, 38623), (158, 38722), (159, 38728), (185, 38803),

Gene: Ascela_45 Start: 33111, Stop: 33515, Start Num: 92

Candidate Starts for Ascela_45:

(Start: 92 @33111 has 34 MA's), (125, 33198), (151, 33291), (161, 33345), (201, 33489),

Gene: Aubs_60 Start: 40637, Stop: 41002, Start Num: 81

Candidate Starts for Aubs_60:

(Start: 81 @40637 has 229 MA's), (100, 40670), (103, 40676), (112, 40688), (129, 40760), (133, 40784), (134, 40787), (142, 40811), (158, 40886), (159, 40892), (185, 40967),

Gene: Auxilium_74 Start: 40053, Stop: 40418, Start Num: 89

Candidate Starts for Auxilium_74:

(Start: 89 @40053 has 19 MA's), (118, 40116), (127, 40149), (143, 40209), (155, 40272),

Gene: Avani_68 Start: 41015, Stop: 41380, Start Num: 81

Candidate Starts for Avani_68:

(Start: 81 @41015 has 229 MA's), (100, 41048), (110, 41063), (112, 41066), (120, 41105), (122, 41108), (127, 41129), (133, 41162), (141, 41183), (142, 41189), (151, 41222), (158, 41264), (159, 41270), (192, 41366),

Gene: Axumite_48 Start: 41091, Stop: 40741, Start Num: 65

Candidate Starts for Axumite_48:

(Start: 65 @41091 has 10 MA's), (107, 41046), (112, 41037), (116, 41022), (127, 40974), (151, 40893),

Gene: BAKA_144 Start: 76097, Stop: 76450, Start Num: 84

Candidate Starts for BAKA_144:

(Start: 84 @76097 has 33 MA's), (151, 76298), (158, 76340),

Gene: Bagrid_145 Start: 76792, Stop: 77145, Start Num: 84

Candidate Starts for Bagrid_145:
(Start: 84 @76792 has 33 MA's), (151, 76993), (158, 77035),

Gene: Barco_49 Start: 34620, Stop: 34982, Start Num: 77
Candidate Starts for Barco_49:
(39, 34476), (45, 34512), (57, 34551), (Start: 77 @34620 has 23 MA's), (128, 34749), (133, 34773),

Gene: Basilisk_31 Start: 22679, Stop: 22335, Start Num: 85
Candidate Starts for Basilisk_31:
(Start: 85 @22679 has 9 MA's), (Start: 101 @22658 has 2 MA's), (104, 22652), (112, 22634), (125, 22586),

Gene: Batiatus_58 Start: 40347, Stop: 40712, Start Num: 81
Candidate Starts for Batiatus_58:
(Start: 81 @40347 has 229 MA's), (100, 40380), (103, 40386), (112, 40398), (129, 40470), (133, 40494), (134, 40497), (142, 40521), (158, 40596), (159, 40602), (185, 40677),

Gene: Beakin_61 Start: 39476, Stop: 39841, Start Num: 81
Candidate Starts for Beakin_61:
(Start: 81 @39476 has 229 MA's), (100, 39509), (103, 39515), (112, 39527), (122, 39569), (129, 39599), (133, 39623), (134, 39626), (158, 39725), (159, 39731), (185, 39806),

Gene: Bedetta_35 Start: 22003, Stop: 21653, Start Num: 85
Candidate Starts for Bedetta_35:
(11, 22510), (21, 22327), (33, 22186), (53, 22093), (Start: 85 @22003 has 9 MA's), (183, 21670),

Gene: Beem_146 Start: 77695, Stop: 78048, Start Num: 84
Candidate Starts for Beem_146:
(Start: 84 @77695 has 33 MA's), (151, 77896), (158, 77938),

Gene: Begonia_49 Start: 37159, Stop: 37521, Start Num: 77
Candidate Starts for Begonia_49:
(57, 37090), (Start: 77 @37159 has 23 MA's), (119, 37258), (127, 37285), (128, 37288), (133, 37312), (192, 37507),

Gene: BenchScraper_76 Start: 41215, Stop: 41616, Start Num: 89
Candidate Starts for BenchScraper_76:
(Start: 89 @41215 has 19 MA's), (143, 41383), (156, 41452),

Gene: BigPhil_54 Start: 35652, Stop: 35999, Start Num: 82
Candidate Starts for BigPhil_54:
(73, 35625), (Start: 78 @35643 has 1 MA's), (Start: 82 @35652 has 26 MA's), (100, 35682), (105, 35691), (114, 35709), (127, 35763), (133, 35790), (151, 35847), (155, 35877), (158, 35889),

Gene: BigPhil_55 Start: 35996, Stop: 36349, Start Num: 81
Candidate Starts for BigPhil_55:
(72, 35960), (Start: 81 @35996 has 229 MA's), (99, 36026), (100, 36029), (108, 36041), (112, 36047), (127, 36110), (129, 36119), (130, 36125), (158, 36239), (163, 36260), (184, 36317), (191, 36329),

Gene: BiggityBass_47 Start: 42936, Stop: 42535, Start Num: 65
Candidate Starts for BiggityBass_47:
(Start: 65 @42936 has 10 MA's), (107, 42849), (126, 42786), (128, 42774), (158, 42651),

Gene: BillyTP_77 Start: 43046, Stop: 43435, Start Num: 89

Candidate Starts for BillyTP_77:

(Start: 89 @43046 has 19 MA's), (131, 43169), (143, 43202), (146, 43217), (156, 43271),

Gene: Bipolar_58 Start: 40097, Stop: 40462, Start Num: 81

Candidate Starts for Bipolar_58:

(Start: 81 @40097 has 229 MA's), (100, 40130), (105, 40139), (112, 40148), (122, 40190), (129, 40220), (133, 40244), (134, 40247), (158, 40346), (159, 40352), (185, 40427),

Gene: BlackSpider_67 Start: 39612, Stop: 40001, Start Num: 89

Candidate Starts for BlackSpider_67:

(54, 39510), (Start: 89 @39612 has 19 MA's), (131, 39735), (143, 39768), (146, 39783), (152, 39804), (156, 39837),

Gene: Blarby_72 Start: 42116, Stop: 42481, Start Num: 81

Candidate Starts for Blarby_72:

(Start: 81 @42116 has 229 MA's), (100, 42149), (110, 42164), (112, 42167), (120, 42206), (122, 42209), (127, 42230), (133, 42263), (142, 42290), (151, 42323), (158, 42365), (159, 42371), (192, 42467),

Gene: Blett_57 Start: 34133, Stop: 34570, Start Num: 96

Candidate Starts for Blett_57:

(Start: 96 @34133 has 9 MA's), (127, 34229), (133, 34256), (149, 34304), (160, 34361), (161, 34367), (166, 34388), (189, 34454), (196, 34484), (200, 34508), (203, 34520),

Gene: Blexus_58 Start: 40670, Stop: 41035, Start Num: 81

Candidate Starts for Blexus_58:

(Start: 81 @40670 has 229 MA's), (100, 40703), (110, 40718), (112, 40721), (122, 40763), (127, 40784), (133, 40817), (142, 40844), (151, 40877), (158, 40919), (159, 40925), (192, 41021),

Gene: BlingBling_48 Start: 35583, Stop: 35945, Start Num: 77

Candidate Starts for BlingBling_48:

(39, 35439), (45, 35475), (57, 35514), (Start: 77 @35583 has 23 MA's), (128, 35712), (133, 35736),

Gene: BlueCrab_60 Start: 40975, Stop: 41340, Start Num: 81

Candidate Starts for BlueCrab_60:

(Start: 81 @40975 has 229 MA's), (100, 41008), (110, 41023), (112, 41026), (122, 41068), (127, 41089), (141, 41143), (142, 41149), (151, 41182), (158, 41224), (159, 41230), (192, 41326),

Gene: BobaPhett_64 Start: 42932, Stop: 43297, Start Num: 81

Candidate Starts for BobaPhett_64:

(Start: 81 @42932 has 229 MA's), (100, 42965), (110, 42980), (112, 42983), (120, 43022), (122, 43025), (127, 43046), (133, 43079), (142, 43106), (151, 43139), (158, 43181), (159, 43187), (192, 43283),

Gene: Bobby_134 Start: 77532, Stop: 77885, Start Num: 84

Candidate Starts for Bobby_134:

(Start: 84 @77532 has 33 MA's), (151, 77733), (158, 77775),

Gene: Bobi_65 Start: 41950, Stop: 42315, Start Num: 81

Candidate Starts for Bobi_65:

(Start: 81 @41950 has 229 MA's), (100, 41983), (103, 41989), (112, 42001), (122, 42043), (129, 42073), (133, 42097), (134, 42100), (158, 42199), (159, 42205), (185, 42280),

Gene: BodEinwohner17_60 Start: 39737, Stop: 40102, Start Num: 81

Candidate Starts for BodEinwohner17_60:

(Start: 81 @39737 has 229 MA's), (100, 39770), (110, 39785), (112, 39788), (122, 39830), (127, 39851), (133, 39884), (141, 39905), (142, 39911), (151, 39944), (158, 39986), (159, 39992), (192, 40088),

Gene: Bolt007_53 Start: 38007, Stop: 38369, Start Num: 88

Candidate Starts for Bolt007_53:

(51, 37902), (53, 37905), (Start: 88 @38007 has 6 MA's), (170, 38295),

Gene: Bombitas_132 Start: 75106, Stop: 75459, Start Num: 84

Candidate Starts for Bombitas_132:

(Start: 84 @75106 has 33 MA's), (151, 75307), (158, 75349),

Gene: Boomer_65 Start: 42607, Stop: 42972, Start Num: 81

Candidate Starts for Boomer_65:

(Start: 81 @42607 has 229 MA's), (100, 42640), (110, 42655), (112, 42658), (120, 42697), (122, 42700), (127, 42721), (133, 42754), (142, 42781), (151, 42814), (158, 42856), (159, 42862), (192, 42958),

Gene: Brocalys_55 Start: 37114, Stop: 37479, Start Num: 81

Candidate Starts for Brocalys_55:

(Start: 81 @37114 has 229 MA's), (100, 37147), (110, 37162), (112, 37165), (120, 37204), (122, 37207), (127, 37228), (133, 37261), (142, 37288), (151, 37321), (158, 37363), (159, 37369), (192, 37465),

Gene: Bubbles123_56 Start: 40256, Stop: 40621, Start Num: 81

Candidate Starts for Bubbles123_56:

(Start: 81 @40256 has 229 MA's), (100, 40289), (105, 40298), (112, 40307), (127, 40370), (133, 40403), (134, 40406), (137, 40418), (142, 40430), (158, 40505), (159, 40511), (185, 40586),

Gene: Bumble_49 Start: 35709, Stop: 36101, Start Num: 74

Candidate Starts for Bumble_49:

(Start: 74 @35709 has 2 MA's), (152, 35925), (170, 36012),

Gene: Burwell21_58 Start: 40215, Stop: 40580, Start Num: 81

Candidate Starts for Burwell21_58:

(Start: 81 @40215 has 229 MA's), (100, 40248), (110, 40263), (112, 40266), (120, 40305), (122, 40308), (127, 40329), (133, 40362), (142, 40389), (151, 40422), (158, 40464), (159, 40470), (192, 40566),

Gene: Bush_58 Start: 34082, Stop: 34519, Start Num: 96

Candidate Starts for Bush_58:

(Start: 96 @34082 has 9 MA's), (127, 34178), (133, 34205), (149, 34253), (160, 34310), (161, 34316), (166, 34337), (189, 34403), (196, 34433), (203, 34469),

Gene: BuzzLyseyear_66 Start: 41636, Stop: 42001, Start Num: 81

Candidate Starts for BuzzLyseyear_66:

(Start: 81 @41636 has 229 MA's), (100, 41669), (110, 41684), (112, 41687), (120, 41726), (122, 41729), (127, 41750), (133, 41783), (142, 41810), (151, 41843), (158, 41885), (159, 41891), (192, 41987),

Gene: ByChance_52 Start: 35903, Stop: 36268, Start Num: 81

Candidate Starts for ByChance_52:

(Start: 81 @35903 has 229 MA's), (100, 35936), (110, 35951), (112, 35954), (122, 35996), (127, 36017), (133, 36050), (141, 36071), (142, 36077), (151, 36110), (158, 36152), (159, 36158), (192, 36254),

Gene: Byougenkin_58 Start: 39979, Stop: 40344, Start Num: 81

Candidate Starts for Byougenkin_58:

(Start: 81 @39979 has 229 MA's), (100, 40012), (110, 40027), (112, 40030), (122, 40072), (127, 40093), (141, 40147), (142, 40153), (151, 40186), (158, 40228), (159, 40234), (192, 40330),

Gene: Cabrinians_61 Start: 40293, Stop: 40658, Start Num: 81

Candidate Starts for Cabrinians_61:

(Start: 81 @40293 has 229 MA's), (100, 40326), (110, 40341), (112, 40344), (120, 40383), (122, 40386), (127, 40407), (133, 40440), (142, 40467), (151, 40500), (158, 40542), (159, 40548), (192, 40644),

Gene: CalWood4100_57 Start: 38014, Stop: 38406, Start Num: 88

Candidate Starts for CalWood4100_57:

(Start: 88 @38014 has 6 MA's), (170, 38299), (183, 38335),

Gene: Camara_31 Start: 21210, Stop: 20869, Start Num: 91

Candidate Starts for Camara_31:

(Start: 91 @21210 has 6 MA's), (Start: 101 @21192 has 2 MA's),

Gene: CaptainKirk2_51 Start: 34868, Stop: 35230, Start Num: 77

Candidate Starts for CaptainKirk2_51:

(39, 34724), (45, 34760), (57, 34799), (Start: 77 @34868 has 23 MA's), (128, 34997), (133, 35021),

Gene: CaptainTrips_57 Start: 39789, Stop: 40154, Start Num: 81

Candidate Starts for CaptainTrips_57:

(Start: 81 @39789 has 229 MA's), (100, 39822), (110, 39837), (112, 39840), (120, 39879), (122, 39882), (127, 39903), (133, 39936), (142, 39963), (151, 39996), (158, 40038), (159, 40044), (192, 40140),

Gene: Cassia_45 Start: 33045, Stop: 33434, Start Num: 92

Candidate Starts for Cassia_45:

(29, 32820), (Start: 92 @33045 has 34 MA's), (116, 33099), (151, 33225), (161, 33279), (199, 33408), (202, 33426),

Gene: Cerasum_55 Start: 36014, Stop: 36367, Start Num: 81

Candidate Starts for Cerasum_55:

(72, 35978), (Start: 81 @36014 has 229 MA's), (99, 36044), (100, 36047), (108, 36059), (112, 36065), (127, 36128), (129, 36137), (130, 36143), (158, 36257), (163, 36278), (184, 36335), (191, 36347),

Gene: Cerasum_54 Start: 35670, Stop: 36017, Start Num: 82

Candidate Starts for Cerasum_54:

(73, 35643), (Start: 78 @35661 has 1 MA's), (Start: 82 @35670 has 26 MA's), (100, 35700), (105, 35709), (114, 35727), (127, 35781), (133, 35808), (151, 35865), (155, 35895), (158, 35907),

Gene: CharlottesWeb_47 Start: 40439, Stop: 40119, Start Num: 81

Candidate Starts for CharlottesWeb_47:

(Start: 65 @40457 has 10 MA's), (Start: 81 @40439 has 229 MA's), (127, 40352), (159, 40223),

Gene: Che8_64 Start: 42503, Stop: 42856, Start Num: 81

Candidate Starts for Che8_64:

(72, 42467), (Start: 81 @42503 has 229 MA's), (99, 42533), (100, 42536), (108, 42548), (112, 42554), (127, 42617), (129, 42626), (130, 42632), (158, 42746), (163, 42767), (184, 42824), (191, 42836),

Gene: Che8_63 Start: 42159, Stop: 42506, Start Num: 82

Candidate Starts for Che8_63:

(73, 42132), (Start: 78 @42150 has 1 MA's), (Start: 82 @42159 has 26 MA's), (100, 42189), (105, 42198), (114, 42216), (127, 42270), (133, 42297), (151, 42354), (155, 42384), (158, 42396),

Gene: Che9d_67 Start: 39585, Stop: 39938, Start Num: 81

Candidate Starts for Che9d_67:

(72, 39549), (Start: 81 @39585 has 229 MA's), (99, 39615), (100, 39618), (108, 39630), (112, 39636), (127, 39699), (129, 39708), (130, 39714), (158, 39828), (163, 39849), (184, 39906), (191, 39918),

Gene: Che9d_66 Start: 39241, Stop: 39588, Start Num: 82

Candidate Starts for Che9d_66:

(73, 39214), (Start: 78 @39232 has 1 MA's), (Start: 82 @39241 has 26 MA's), (100, 39271), (105, 39280), (114, 39298), (127, 39352), (133, 39379), (151, 39436), (155, 39466), (158, 39478),

Gene: CherryTomatoes_47 Start: 15930, Stop: 16262, Start Num: 93

Candidate Starts for CherryTomatoes_47:

(27, 15675), (Start: 76 @15903 has 1 MA's), (Start: 93 @15930 has 3 MA's), (116, 15984), (117, 15993), (127, 16032), (151, 16116), (163, 16179), (172, 16206),

Gene: Chevrolet_65 Start: 40947, Stop: 41312, Start Num: 81

Candidate Starts for Chevrolet_65:

(Start: 81 @40947 has 229 MA's), (100, 40980), (103, 40986), (112, 40998), (122, 41040), (129, 41070), (133, 41094), (134, 41097), (158, 41196), (159, 41202), (185, 41277),

Gene: Chickaboom_31 Start: 21673, Stop: 21350, Start Num: 101

Candidate Starts for Chickaboom_31:

(Start: 85 @21694 has 9 MA's), (Start: 101 @21673 has 2 MA's), (125, 21601), (163, 21430), (183, 21367),

Gene: Chuckly_63 Start: 40935, Stop: 41300, Start Num: 81

Candidate Starts for Chuckly_63:

(Start: 81 @40935 has 229 MA's), (100, 40968), (110, 40983), (112, 40986), (120, 41025), (122, 41028), (127, 41049), (133, 41082), (142, 41109), (151, 41142), (158, 41184), (159, 41190), (192, 41286),

Gene: Clifton_55 Start: 37465, Stop: 37830, Start Num: 81

Candidate Starts for Clifton_55:

(Start: 81 @37465 has 229 MA's), (100, 37498), (110, 37513), (112, 37516), (120, 37555), (122, 37558), (127, 37579), (133, 37612), (142, 37639), (151, 37672), (158, 37714), (159, 37720), (192, 37816),

Gene: Coco12_57 Start: 39727, Stop: 40074, Start Num: 82

Candidate Starts for Coco12_57:

(73, 39700), (Start: 78 @39718 has 1 MA's), (Start: 82 @39727 has 26 MA's), (100, 39757), (105, 39766), (114, 39784), (127, 39838), (133, 39865), (151, 39922), (155, 39952), (158, 39964),

Gene: Coco12_58 Start: 40071, Stop: 40424, Start Num: 81

Candidate Starts for Coco12_58:

(72, 40035), (Start: 81 @40071 has 229 MA's), (99, 40101), (100, 40104), (108, 40116), (112, 40122), (127, 40185), (129, 40194), (130, 40200), (158, 40314), (163, 40335), (184, 40392), (191, 40404),

Gene: Coldpizza_48 Start: 43898, Stop: 43461, Start Num: 65

Candidate Starts for Coldpizza_48:

(Start: 65 @43898 has 10 MA's), (112, 43787), (116, 43772), (121, 43748), (128, 43721), (148, 43655), (158, 43598), (172, 43550), (178, 43529), (180, 43520),

Gene: Colusalem_34 Start: 21842, Stop: 21492, Start Num: 85

Candidate Starts for Colusalem_34:

(21, 22166), (33, 22025), (53, 21932), (Start: 85 @21842 has 9 MA's), (183, 21509),

Gene: Community_48 Start: 35107, Stop: 35478, Start Num: 92

Candidate Starts for Community_48:

(Start: 92 @35107 has 34 MA's), (127, 35209), (151, 35287), (161, 35341),

Gene: Constella_138 Start: 76348, Stop: 76701, Start Num: 84

Candidate Starts for Constella_138:

(Start: 84 @76348 has 33 MA's), (151, 76549), (158, 76591),

Gene: CookieBear_73 Start: 41689, Stop: 42090, Start Num: 89

Candidate Starts for CookieBear_73:

(Start: 89 @41689 has 19 MA's), (143, 41857), (156, 41926),

Gene: Cornie_53 Start: 37745, Stop: 38092, Start Num: 82

Candidate Starts for Cornie_53:

(73, 37718), (Start: 78 @37736 has 1 MA's), (Start: 82 @37745 has 26 MA's), (100, 37775), (105, 37784), (114, 37802), (127, 37856), (133, 37883), (151, 37940), (155, 37970), (158, 37982),

Gene: Cornie_56 Start: 38714, Stop: 39079, Start Num: 81

Candidate Starts for Cornie_56:

(Start: 81 @38714 has 229 MA's), (100, 38747), (110, 38762), (112, 38765), (120, 38804), (122, 38807), (127, 38828), (142, 38888), (151, 38921), (158, 38963), (159, 38969), (192, 39065),

Gene: Cornie_54 Start: 38089, Stop: 38442, Start Num: 81

Candidate Starts for Cornie_54:

(72, 38053), (Start: 81 @38089 has 229 MA's), (99, 38119), (100, 38122), (108, 38134), (112, 38140), (127, 38203), (129, 38212), (130, 38218), (158, 38332), (163, 38353), (184, 38410), (191, 38422),

Gene: Cornucopia_62 Start: 40943, Stop: 41308, Start Num: 81

Candidate Starts for Cornucopia_62:

(Start: 81 @40943 has 229 MA's), (100, 40976), (110, 40991), (112, 40994), (120, 41033), (122, 41036), (127, 41057), (141, 41111), (142, 41117), (151, 41150), (158, 41192), (159, 41198), (192, 41294),

Gene: Crewmate_51 Start: 33740, Stop: 34135, Start Num: 92

Candidate Starts for Crewmate_51:

(Start: 92 @33740 has 34 MA's), (116, 33794), (151, 33920),

Gene: Crumble_55 Start: 36229, Stop: 36594, Start Num: 81

Candidate Starts for Crumble_55:

(Start: 81 @36229 has 229 MA's), (100, 36262), (110, 36277), (112, 36280), (120, 36319), (122, 36322), (127, 36343), (133, 36376), (142, 36403), (151, 36436), (158, 36478), (159, 36484), (192, 36580),

Gene: Cyan_46 Start: 33389, Stop: 33802, Start Num: 92

Candidate Starts for Cyan_46:

(Start: 92 @33389 has 34 MA's), (116, 33443), (151, 33569), (161, 33623), (204, 33776), (206, 33794),

Gene: DLane_55 Start: 38997, Stop: 39362, Start Num: 81

Candidate Starts for DLane_55:

(Start: 81 @38997 has 229 MA's), (100, 39030), (103, 39036), (112, 39048), (122, 39090), (129, 39120), (133, 39144), (134, 39147), (158, 39246), (159, 39252), (185, 39327),

Gene: DRBy19_63 Start: 41390, Stop: 41755, Start Num: 81

Candidate Starts for DRBy19_63:

(Start: 81 @41390 has 229 MA's), (100, 41423), (110, 41438), (112, 41441), (120, 41480), (122, 41483), (127, 41504), (133, 41537), (141, 41558), (142, 41564), (151, 41597), (158, 41639), (159, 41645), (192, 41741),

Gene: DaWorst_61 Start: 40694, Stop: 41059, Start Num: 81

Candidate Starts for DaWorst_61:

(Start: 81 @40694 has 229 MA's), (100, 40727), (110, 40742), (112, 40745), (120, 40784), (122, 40787), (127, 40808), (133, 40841), (142, 40868), (151, 40901), (158, 40943), (159, 40949), (192, 41045),

Gene: DaddyRickover_59 Start: 40432, Stop: 40797, Start Num: 81

Candidate Starts for DaddyRickover_59:

(Start: 81 @40432 has 229 MA's), (100, 40465), (110, 40480), (112, 40483), (122, 40525), (127, 40546), (133, 40579), (141, 40600), (142, 40606), (151, 40639), (158, 40681), (159, 40687), (192, 40783),

Gene: Daenerys_54 Start: 38542, Stop: 38907, Start Num: 81

Candidate Starts for Daenerys_54:

(Start: 81 @38542 has 229 MA's), (100, 38575), (110, 38590), (112, 38593), (122, 38635), (127, 38656), (133, 38689), (141, 38710), (142, 38716), (151, 38749), (158, 38791), (159, 38797), (192, 38893),

Gene: Dallas_145 Start: 77162, Stop: 77515, Start Num: 84

Candidate Starts for Dallas_145:

(Start: 84 @77162 has 33 MA's), (151, 77363), (158, 77405),

Gene: Dante_61 Start: 40217, Stop: 40582, Start Num: 81

Candidate Starts for Dante_61:

(Start: 81 @40217 has 229 MA's), (100, 40250), (110, 40265), (112, 40268), (120, 40307), (122, 40310), (127, 40331), (133, 40364), (142, 40391), (151, 40424), (158, 40466), (159, 40472), (192, 40568),

Gene: DeadP_66 Start: 42861, Stop: 43226, Start Num: 81

Candidate Starts for DeadP_66:

(Start: 81 @42861 has 229 MA's), (100, 42894), (110, 42909), (112, 42912), (120, 42951), (122, 42954), (127, 42975), (133, 43008), (142, 43035), (151, 43068), (158, 43110), (159, 43116), (192, 43212),

Gene: Delian_54 Start: 34866, Stop: 35228, Start Num: 77

Candidate Starts for Delian_54:

(39, 34722), (45, 34758), (57, 34797), (Start: 77 @34866 has 23 MA's), (128, 34995), (133, 35019),

Gene: Demsculpinboyz_69 Start: 39586, Stop: 39939, Start Num: 81

Candidate Starts for Demsculpinboyz_69:

(72, 39550), (Start: 81 @39586 has 229 MA's), (99, 39616), (100, 39619), (108, 39631), (112, 39637), (127, 39700), (129, 39709), (130, 39715), (158, 39829), (163, 39850), (191, 39919),

Gene: Demsculpinboyz_68 Start: 39242, Stop: 39589, Start Num: 82

Candidate Starts for Demsculpinboyz_68:

(73, 39215), (Start: 78 @39233 has 1 MA's), (Start: 82 @39242 has 26 MA's), (100, 39272), (105, 39281), (114, 39299), (127, 39353), (133, 39380), (151, 39437), (155, 39467), (158, 39479),

Gene: Demsculpinboyz_71 Start: 40214, Stop: 40579, Start Num: 81

Candidate Starts for Demsculpinboyz_71:

(Start: 81 @40214 has 229 MA's), (100, 40247), (110, 40262), (112, 40265), (120, 40304), (122, 40307), (127, 40328), (142, 40388), (151, 40421), (158, 40463), (159, 40469), (181, 40538), (192, 40565),

Gene: DillTech15_57 Start: 38876, Stop: 39241, Start Num: 81

Candidate Starts for DillTech15_57:

(Start: 81 @38876 has 229 MA's), (100, 38909), (110, 38924), (112, 38927), (120, 38966), (122, 38969), (127, 38990), (142, 39050), (151, 39083), (158, 39125), (159, 39131), (181, 39200), (192, 39227),

Gene: DirtMcgirt_59 Start: 38957, Stop: 39322, Start Num: 81

Candidate Starts for DirtMcgirt_59:

(Start: 81 @38957 has 229 MA's), (100, 38990), (110, 39005), (112, 39008), (120, 39047), (122, 39050), (127, 39071), (133, 39104), (141, 39125), (142, 39131), (151, 39164), (158, 39206), (159, 39212), (192, 39308),

Gene: DirtyBoi_56 Start: 37313, Stop: 37675, Start Num: 77

Candidate Starts for DirtyBoi_56:

(Start: 77 @37313 has 23 MA's), (127, 37436),

Gene: Dmitri_53 Start: 39335, Stop: 39700, Start Num: 77

Candidate Starts for Dmitri_53:

(Start: 77 @39335 has 23 MA's), (127, 39461),

Gene: DmpstrDiver_145 Start: 77081, Stop: 77434, Start Num: 84

Candidate Starts for DmpstrDiver_145:

(Start: 84 @77081 has 33 MA's), (151, 77282), (158, 77324),

Gene: Donkeykong_63 Start: 42892, Stop: 43257, Start Num: 81

Candidate Starts for Donkeykong_63:

(Start: 81 @42892 has 229 MA's), (100, 42925), (105, 42934), (112, 42943), (133, 43039), (134, 43042), (142, 43066), (158, 43141), (159, 43147), (185, 43222),

Gene: Doomphist_60 Start: 41387, Stop: 41752, Start Num: 81

Candidate Starts for Doomphist_60:

(Start: 81 @41387 has 229 MA's), (100, 41420), (110, 41435), (112, 41438), (122, 41480), (127, 41501), (133, 41534), (141, 41555), (142, 41561), (151, 41594), (158, 41636), (159, 41642), (192, 41738),

Gene: Dorothy_58 Start: 39606, Stop: 39971, Start Num: 81

Candidate Starts for Dorothy_58:

(Start: 81 @39606 has 229 MA's), (100, 39639), (110, 39654), (112, 39657), (120, 39696), (122, 39699), (127, 39720), (133, 39753), (142, 39780), (151, 39813), (158, 39855), (159, 39861), (192, 39957),

Gene: DosHalletts_62 Start: 41742, Stop: 42107, Start Num: 81

Candidate Starts for DosHalletts_62:

(Start: 81 @41742 has 229 MA's), (100, 41775), (110, 41790), (112, 41793), (122, 41835), (127, 41856), (133, 41889), (141, 41910), (142, 41916), (151, 41949), (158, 41991), (159, 41997), (192, 42093),

Gene: DotProduct_53 Start: 38248, Stop: 38595, Start Num: 82

Candidate Starts for DotProduct_53:

(73, 38221), (Start: 78 @38239 has 1 MA's), (Start: 82 @38248 has 26 MA's), (Start: 92 @38260 has 34 MA's), (95, 38263), (100, 38278), (105, 38287), (114, 38305), (127, 38359), (133, 38386), (151, 38443), (155, 38473), (158, 38485), (193, 38587),

Gene: DotProduct_54 Start: 38592, Stop: 38945, Start Num: 81

Candidate Starts for DotProduct_54:

(72, 38556), (Start: 81 @38592 has 229 MA's), (99, 38622), (100, 38625), (108, 38637), (112, 38643), (127, 38706), (129, 38715), (130, 38721), (158, 38835), (163, 38856), (184, 38913), (191, 38925),

Gene: Doug_62 Start: 40960, Stop: 41325, Start Num: 81

Candidate Starts for Doug_62:

(Start: 81 @40960 has 229 MA's), (100, 40993), (112, 41011), (120, 41050), (122, 41053), (127, 41074), (133, 41107), (142, 41134), (151, 41167), (158, 41209), (159, 41215), (192, 41311),

Gene: Dove_130 Start: 72680, Stop: 73033, Start Num: 84

Candidate Starts for Dove_130:

(Start: 84 @72680 has 33 MA's), (151, 72881), (158, 72923),

Gene: DrSierra_43 Start: 31383, Stop: 31799, Start Num: 92

Candidate Starts for DrSierra_43:

(Start: 92 @31383 has 34 MA's), (151, 31566), (161, 31620), (204, 31773), (206, 31791),

Gene: Drago_58 Start: 38960, Stop: 39325, Start Num: 81

Candidate Starts for Drago_58:

(Start: 81 @38960 has 229 MA's), (100, 38993), (110, 39008), (112, 39011), (120, 39050), (122, 39053), (127, 39074), (133, 39107), (141, 39128), (142, 39134), (151, 39167), (158, 39209), (159, 39215), (192, 39311),

Gene: Dropshot_57 Start: 33783, Stop: 34220, Start Num: 96

Candidate Starts for Dropshot_57:

(Start: 96 @33783 has 9 MA's), (127, 33879), (133, 33906), (149, 33954), (160, 34011), (161, 34017), (166, 34038), (189, 34104), (196, 34134), (200, 34158), (203, 34170),

Gene: Duke13_140 Start: 74382, Stop: 74735, Start Num: 84

Candidate Starts for Duke13_140:

(Start: 84 @74382 has 33 MA's), (151, 74583), (158, 74625),

Gene: Eesa_29 Start: 22456, Stop: 22103, Start Num: 85

Candidate Starts for Eesa_29:

(Start: 85 @22456 has 9 MA's), (125, 22357), (183, 22120),

Gene: Eish_64 Start: 41209, Stop: 41574, Start Num: 81

Candidate Starts for Eish_64:

(Start: 81 @41209 has 229 MA's), (100, 41242), (110, 41257), (112, 41260), (120, 41299), (122, 41302), (127, 41323), (133, 41356), (142, 41383), (151, 41416), (158, 41458), (159, 41464), (192, 41560),

Gene: Ejimix_137 Start: 77230, Stop: 77583, Start Num: 84

Candidate Starts for Ejimix_137:

(Start: 84 @77230 has 33 MA's), (151, 77431), (158, 77473),

Gene: EleanorGeorge_61 Start: 41073, Stop: 41438, Start Num: 81

Candidate Starts for EleanorGeorge_61:

(Start: 81 @41073 has 229 MA's), (100, 41106), (110, 41121), (112, 41124), (122, 41166), (127, 41187), (133, 41220), (142, 41247), (151, 41280), (158, 41322), (159, 41328), (192, 41424),

Gene: Emma_61 Start: 40009, Stop: 40374, Start Num: 81

Candidate Starts for Emma_61:

(Start: 81 @40009 has 229 MA's), (100, 40042), (112, 40060), (122, 40102), (129, 40132), (133, 40156), (134, 40159), (158, 40258), (159, 40264), (185, 40339), (187, 40342), (188, 40345),

Gene: Empress_58 Start: 39956, Stop: 40321, Start Num: 81

Candidate Starts for Empress_58:

(Start: 81 @39956 has 229 MA's), (100, 39989), (110, 40004), (112, 40007), (122, 40049), (127, 40070), (133, 40103), (141, 40124), (142, 40130), (151, 40163), (158, 40205), (159, 40211), (192, 40307),

Gene: Enby_61 Start: 39236, Stop: 39601, Start Num: 81

Candidate Starts for Enby_61:

(Start: 81 @39236 has 229 MA's), (100, 39269), (110, 39284), (112, 39287), (120, 39326), (122, 39329), (127, 39350), (133, 39383), (142, 39410), (151, 39443), (158, 39485), (159, 39491), (192, 39587),

Gene: Eradicator_53 Start: 38486, Stop: 38851, Start Num: 81

Candidate Starts for Eradicator_53:

(Start: 81 @38486 has 229 MA's), (100, 38519), (110, 38534), (112, 38537), (120, 38576), (122, 38579), (127, 38600), (133, 38633), (142, 38660), (151, 38693), (158, 38735), (159, 38741), (192, 38837),

Gene: EricMillard_136 Start: 75734, Stop: 76087, Start Num: 84

Candidate Starts for EricMillard_136:

(Start: 84 @75734 has 33 MA's), (151, 75935), (158, 75977),

Gene: Estave1_63 Start: 41407, Stop: 41772, Start Num: 81

Candidate Starts for Estave1_63:

(Start: 81 @41407 has 229 MA's), (100, 41440), (110, 41455), (112, 41458), (120, 41497), (122, 41500), (127, 41521), (133, 41554), (141, 41575), (142, 41581), (151, 41614), (158, 41656), (159, 41662), (192, 41758),

Gene: Evaa_48 Start: 41735, Stop: 41361, Start Num: 65

Candidate Starts for Evaa_48:

(25, 41960), (62, 41741), (Start: 65 @41735 has 10 MA's), (107, 41675), (119, 41630), (126, 41612), (127, 41603),

Gene: EvePickles_75 Start: 42959, Stop: 43348, Start Num: 89

Candidate Starts for EvePickles_75:

(Start: 89 @42959 has 19 MA's), (131, 43082), (143, 43115), (146, 43130), (156, 43184),

Gene: Faja_79 Start: 43731, Stop: 44132, Start Num: 89

Candidate Starts for Faja_79:

(Start: 89 @43731 has 19 MA's), (143, 43899), (156, 43968),

Gene: Fancypants_62 Start: 40927, Stop: 41292, Start Num: 81

Candidate Starts for Fancypants_62:

(Start: 81 @40927 has 229 MA's), (100, 40960), (110, 40975), (112, 40978), (122, 41020), (127, 41041), (141, 41095), (142, 41101), (151, 41134), (158, 41176), (159, 41182), (192, 41278),

Gene: Fastidio_60 Start: 39023, Stop: 39388, Start Num: 81

Candidate Starts for Fastidio_60:

(Start: 81 @39023 has 229 MA's), (100, 39056), (110, 39071), (112, 39074), (120, 39113), (122, 39116), (127, 39137), (142, 39197), (151, 39230), (158, 39272), (159, 39278), (181, 39347), (192, 39374),

Gene: Fenry_49 Start: 36364, Stop: 36726, Start Num: 77

Candidate Starts for Fenry_49:

(9, 35836), (22, 36049), (36, 36202), (39, 36220), (45, 36256), (57, 36295), (Start: 77 @36364 has 23 MA's), (128, 36493), (133, 36517), (192, 36712),

Gene: Filuzino_58 Start: 39299, Stop: 39664, Start Num: 81

Candidate Starts for Filuzino_58:

(Start: 81 @39299 has 229 MA's), (100, 39332), (103, 39338), (112, 39350), (122, 39392), (129, 39422), (133, 39446), (134, 39449), (158, 39548), (159, 39554), (185, 39629), (187, 39632),

Gene: Firehouse51_61 Start: 43811, Stop: 44176, Start Num: 81

Candidate Starts for Firehouse51_61:

(Start: 81 @43811 has 229 MA's), (100, 43844), (110, 43859), (112, 43862), (120, 43901), (122, 43904), (127, 43925), (133, 43958), (142, 43985), (151, 44018), (158, 44060), (159, 44066), (192, 44162),

Gene: Flathead_60 Start: 40766, Stop: 41131, Start Num: 81

Candidate Starts for Flathead_60:

(Start: 81 @40766 has 229 MA's), (100, 40799), (103, 40805), (112, 40817), (122, 40859), (129, 40889), (133, 40913), (134, 40916), (158, 41015), (159, 41021), (185, 41096), (187, 41099), (188, 41102),

Gene: Florinda_71 Start: 42396, Stop: 42761, Start Num: 81

Candidate Starts for Florinda_71:

(Start: 81 @42396 has 229 MA's), (100, 42429), (105, 42438), (112, 42447), (122, 42489), (129, 42519), (133, 42543), (134, 42546), (158, 42645), (159, 42651), (185, 42726),

Gene: Footloose_58 Start: 33452, Stop: 33814, Start Num: 81

Candidate Starts for Footloose_58:

(59, 33380), (63, 33398), (72, 33416), (Start: 81 @33452 has 229 MA's), (Start: 90 @33464 has 1 MA's), (115, 33524), (124, 33557), (127, 33572), (131, 33599), (140, 33623), (151, 33659),

Gene: FreddyB_61 Start: 39138, Stop: 39503, Start Num: 81

Candidate Starts for FreddyB_61:

(Start: 81 @39138 has 229 MA's), (100, 39171), (110, 39186), (112, 39189), (120, 39228), (122, 39231), (127, 39252), (133, 39285), (142, 39312), (151, 39345), (158, 39387), (159, 39393), (192, 39489),

Gene: Fresco_48 Start: 41091, Stop: 40741, Start Num: 65

Candidate Starts for Fresco_48:

(Start: 65 @41091 has 10 MA's), (107, 41046), (112, 41037), (116, 41022), (127, 40974), (151, 40893),

Gene: Fruitloop_57 Start: 40613, Stop: 40978, Start Num: 81

Candidate Starts for Fruitloop_57:

(Start: 81 @40613 has 229 MA's), (100, 40646), (105, 40655), (112, 40664), (122, 40706), (129, 40736), (133, 40760), (134, 40763), (158, 40862), (159, 40868), (185, 40943),

Gene: GUmbie_58 Start: 39713, Stop: 40078, Start Num: 81

Candidate Starts for GUmbie_58:

(Start: 81 @39713 has 229 MA's), (100, 39746), (110, 39761), (112, 39764), (120, 39803), (122, 39806), (127, 39827), (133, 39860), (142, 39887), (151, 39920), (158, 39962), (159, 39968), (192, 40064),

Gene: Galactic_59 Start: 40176, Stop: 40541, Start Num: 81

Candidate Starts for Galactic_59:

(Start: 81 @40176 has 229 MA's), (100, 40209), (110, 40224), (112, 40227), (120, 40266), (122, 40269), (127, 40290), (142, 40350), (151, 40383), (158, 40425), (159, 40431), (192, 40527),

Gene: Gandalph_63 Start: 40535, Stop: 40900, Start Num: 81

Candidate Starts for Gandalph_63:

(Start: 81 @40535 has 229 MA's), (100, 40568), (110, 40583), (112, 40586), (122, 40628), (127, 40649), (133, 40682), (142, 40709), (151, 40742), (158, 40784), (159, 40790), (192, 40886),

Gene: GigiOuiOui_56 Start: 39153, Stop: 39518, Start Num: 81

Candidate Starts for GigiOuiOui_56:

(Start: 81 @39153 has 229 MA's), (100, 39186), (110, 39201), (112, 39204), (120, 39243), (122, 39246), (127, 39267), (142, 39327), (151, 39360), (158, 39402), (159, 39408), (192, 39504),

Gene: Girafales_69 Start: 42187, Stop: 42552, Start Num: 81

Candidate Starts for Girafales_69:

(Start: 81 @42187 has 229 MA's), (100, 42220), (105, 42229), (112, 42238), (122, 42280), (129, 42310), (133, 42334), (134, 42337), (158, 42436), (159, 42442), (185, 42517),

Gene: Girr_58 Start: 40017, Stop: 40382, Start Num: 81

Candidate Starts for Girr_58:

(Start: 81 @40017 has 229 MA's), (100, 40050), (110, 40065), (112, 40068), (120, 40107), (122, 40110), (127, 40131), (142, 40191), (151, 40224), (158, 40266), (159, 40272), (192, 40368),

Gene: Globfish_75 Start: 41426, Stop: 41815, Start Num: 89

Candidate Starts for Globfish_75:

(Start: 89 @41426 has 19 MA's), (131, 41549), (143, 41582), (146, 41597), (156, 41651),

Gene: Gorge_64 Start: 41655, Stop: 42020, Start Num: 81

Candidate Starts for Gorge_64:

(Start: 81 @41655 has 229 MA's), (100, 41688), (110, 41703), (112, 41706), (120, 41745), (122, 41748), (127, 41769), (133, 41802), (142, 41829), (151, 41862), (158, 41904), (159, 41910), (192, 42006),

Gene: Gorpy_74 Start: 42930, Stop: 43331, Start Num: 89

Candidate Starts for Gorpy_74:

(28, 42684), (Start: 89 @42930 has 19 MA's), (143, 43098), (156, 43167),

Gene: Greely_69 Start: 25152, Stop: 25580, Start Num: 66

Candidate Starts for Greely_69:

(Start: 66 @25152 has 3 MA's), (102, 25233), (121, 25296), (131, 25347), (147, 25386), (151, 25401), (163, 25464),

Gene: Guacamole_48 Start: 35005, Stop: 35367, Start Num: 77

Candidate Starts for Guacamole_48:

(39, 34861), (45, 34897), (57, 34936), (Start: 77 @35005 has 23 MA's), (119, 35104), (127, 35131), (128, 35134), (133, 35158), (192, 35353),

Gene: Hades_61 Start: 41111, Stop: 41476, Start Num: 81

Candidate Starts for Hades_61:

(Start: 81 @41111 has 229 MA's), (100, 41144), (110, 41159), (112, 41162), (120, 41201), (122, 41204), (127, 41225), (133, 41258), (142, 41285), (151, 41318), (158, 41360), (159, 41366), (181, 41435), (192, 41462),

Gene: Halley_146 Start: 77546, Stop: 77899, Start Num: 84

Candidate Starts for Halley_146:

(Start: 84 @77546 has 33 MA's), (151, 77747), (158, 77789),

Gene: Hamulus_61 Start: 40756, Stop: 41121, Start Num: 81

Candidate Starts for Hamulus_61:

(Start: 81 @40756 has 229 MA's), (100, 40789), (103, 40795), (112, 40807), (122, 40849), (129, 40879), (133, 40903), (134, 40906), (158, 41005), (159, 41011), (185, 41086), (187, 41089), (188, 41092),

Gene: Harley_62 Start: 40658, Stop: 41011, Start Num: 81

Candidate Starts for Harley_62:

(72, 40622), (Start: 81 @40658 has 229 MA's), (99, 40688), (100, 40691), (108, 40703), (112, 40709), (127, 40772), (129, 40781), (158, 40901), (163, 40922), (184, 40979), (191, 40991),

Gene: Harley_61 Start: 40314, Stop: 40661, Start Num: 82

Candidate Starts for Harley_61:

(73, 40287), (Start: 78 @40305 has 1 MA's), (Start: 82 @40314 has 26 MA's), (100, 40344), (105, 40353), (114, 40371), (127, 40425), (133, 40452), (151, 40509), (155, 40539), (158, 40551),

Gene: Hawkeye_86 Start: 58033, Stop: 58440, Start Num: 83

Candidate Starts for Hawkeye_86:

(58, 57952), (63, 57976), (Start: 66 @57982 has 3 MA's), (Start: 81 @58030 has 229 MA's), (Start: 83 @58033 has 1 MA's), (116, 58096), (155, 58261), (162, 58288), (163, 58294), (185, 58363), (197, 58411),

Gene: Hedwig_57 Start: 38509, Stop: 38871, Start Num: 77

Candidate Starts for Hedwig_57:

(19, 38158), (Start: 77 @38509 has 23 MA's), (127, 38632),

Gene: Hegedechwinu_60 Start: 39325, Stop: 39690, Start Num: 81

Candidate Starts for Hegedechwinu_60:

(Start: 81 @39325 has 229 MA's), (100, 39358), (110, 39373), (112, 39376), (120, 39415), (122, 39418), (127, 39439), (133, 39472), (142, 39499), (151, 39532), (158, 39574), (159, 39580), (192, 39676),

Gene: Hestia_70 Start: 39954, Stop: 40355, Start Num: 89

Candidate Starts for Hestia_70:

(Start: 89 @39954 has 19 MA's), (143, 40122), (156, 40191),

Gene: Hillester_80 Start: 42975, Stop: 43364, Start Num: 89

Candidate Starts for Hillester_80:

(1, 41406), (2, 41541), (3, 41652), (4, 41688), (5, 41751), (10, 42429), (23, 42645), (Start: 89 @42975 has 19 MA's), (131, 43098), (143, 43131), (146, 43146), (156, 43200), (183, 43290),

Gene: Hirko_43 Start: 34532, Stop: 34897, Start Num: 92

Candidate Starts for Hirko_43:

(Start: 92 @34532 has 34 MA's), (143, 34685), (151, 34718), (153, 34733), (173, 34814),

Gene: Hitter_51 Start: 34662, Stop: 35024, Start Num: 77

Candidate Starts for Hitter_51:

(39, 34518), (45, 34554), (57, 34593), (Start: 77 @34662 has 23 MA's), (128, 34791), (133, 34815), (192, 35010),

Gene: Hlubikazi_56 Start: 38331, Stop: 38696, Start Num: 81

Candidate Starts for Hlubikazi_56:

(Start: 81 @38331 has 229 MA's), (100, 38364), (110, 38379), (112, 38382), (122, 38424), (127, 38445), (133, 38478), (141, 38499), (142, 38505), (158, 38580), (159, 38586), (192, 38682),

Gene: HokkenD_137 Start: 76705, Stop: 77058, Start Num: 84

Candidate Starts for HokkenD_137:

(52, 76603), (Start: 84 @76705 has 33 MA's), (151, 76906), (158, 76948),

Gene: Hortus1_71 Start: 44930, Stop: 44580, Start Num: 97

Candidate Starts for Hortus1_71:

(43, 45071), (70, 44987), (Start: 97 @44930 has 6 MA's), (107, 44903), (112, 44894), (113, 44891), (128, 44828), (131, 44804), (176, 44627), (180, 44612), (190, 44591),

Gene: Hughesyang_143 Start: 77316, Stop: 77669, Start Num: 84

Candidate Starts for Hughesyang_143:

(Start: 84 @77316 has 33 MA's), (151, 77517), (158, 77559),

Gene: IMpilo_55 Start: 37786, Stop: 38106, Start Num: 100

Candidate Starts for IMpilo_55:

(72, 37717), (Start: 81 @37753 has 229 MA's), (99, 37783), (100, 37786), (108, 37798), (112, 37804), (127, 37867), (129, 37876), (130, 37882), (158, 37996), (163, 38017), (184, 38074), (191, 38086),

Gene: IMpilo_54 Start: 37409, Stop: 37756, Start Num: 82

Candidate Starts for IMpilo_54:

(73, 37382), (Start: 78 @37400 has 1 MA's), (Start: 82 @37409 has 26 MA's), (Start: 92 @37421 has 34 MA's), (95, 37424), (100, 37439), (105, 37448), (114, 37466), (127, 37520), (133, 37547), (151, 37604), (155, 37634), (158, 37646),

Gene: lbOuu_61 Start: 40693, Stop: 41058, Start Num: 81

Candidate Starts for lbOuu_61:

(Start: 81 @40693 has 229 MA's), (100, 40726), (110, 40741), (112, 40744), (120, 40783), (122, 40786), (127, 40807), (133, 40840), (142, 40867), (151, 40900), (158, 40942), (159, 40948), (192, 41044),

Gene: lbhubesi_60 Start: 40300, Stop: 40665, Start Num: 81

Candidate Starts for lbhubesi_60:

(Start: 81 @40300 has 229 MA's), (100, 40333), (110, 40348), (112, 40351), (120, 40390), (122, 40393), (127, 40414), (142, 40474), (151, 40507), (158, 40549), (159, 40555), (181, 40624), (192, 40651),

Gene: Inventum_55 Start: 39804, Stop: 40169, Start Num: 81

Candidate Starts for Inventum_55:

(Start: 81 @39804 has 229 MA's), (100, 39837), (110, 39852), (112, 39855), (120, 39894), (122, 39897), (127, 39918), (133, 39951), (142, 39978), (151, 40011), (158, 40053), (159, 40059), (192, 40155),

Gene: IrishSherpFalk_61 Start: 41968, Stop: 42333, Start Num: 81

Candidate Starts for IrishSherpFalk_61:

(Start: 81 @41968 has 229 MA's), (100, 42001), (110, 42016), (112, 42019), (120, 42058), (122, 42061), (127, 42082), (142, 42142), (151, 42175), (158, 42217), (159, 42223), (192, 42319),

Gene: Isolde_74 Start: 41800, Stop: 42201, Start Num: 89

Candidate Starts for Isolde_74:

(50, 41689), (Start: 89 @41800 has 19 MA's), (143, 41968), (156, 42037),

Gene: lter_45 Start: 33105, Stop: 33509, Start Num: 92

Candidate Starts for lter_45:

(Start: 92 @33105 has 34 MA's), (125, 33192), (151, 33285), (161, 33339), (201, 33483), (205, 33501),

Gene: ltyBittyPiggy_45 Start: 32844, Stop: 33215, Start Num: 92

Candidate Starts for ltyBittyPiggy_45:

(Start: 92 @32844 has 34 MA's), (116, 32898), (151, 33024), (161, 33078),

Gene: Jabbawokkie_74 Start: 42036, Stop: 42401, Start Num: 81

Candidate Starts for Jabbawokkie_74:

(Start: 81 @42036 has 229 MA's), (100, 42069), (110, 42084), (112, 42087), (120, 42126), (122, 42129), (127, 42150), (133, 42183), (142, 42210), (151, 42243), (158, 42285), (159, 42291), (192, 42387),

Gene: JalFarm20_71 Start: 43462, Stop: 43809, Start Num: 82

Candidate Starts for JalFarm20_71:

(73, 43435), (Start: 78 @43453 has 1 MA's), (Start: 82 @43462 has 26 MA's), (100, 43492), (105, 43501), (114, 43519), (127, 43573), (133, 43600), (151, 43657), (155, 43687), (158, 43699),

Gene: JalFarm20_72 Start: 43806, Stop: 44159, Start Num: 81

Candidate Starts for JalFarm20_72:

(72, 43770), (Start: 81 @43806 has 229 MA's), (99, 43836), (100, 43839), (108, 43851), (112, 43857), (127, 43920), (129, 43929), (130, 43935), (158, 44049), (163, 44070), (184, 44127), (191, 44139),

Gene: Jalammah_54 Start: 37665, Stop: 38027, Start Num: 77

Candidate Starts for Jalammah_54:

(39, 37521), (45, 37557), (57, 37596), (Start: 77 @37665 has 23 MA's), (128, 37794), (133, 37818), (192, 38013),

Gene: James_64 Start: 41780, Stop: 42145, Start Num: 81

Candidate Starts for James_64:

(Start: 81 @41780 has 229 MA's), (100, 41813), (110, 41828), (112, 41831), (120, 41870), (122, 41873), (127, 41894), (133, 41927), (142, 41954), (151, 41987), (158, 42029), (159, 42035), (192, 42131),

Gene: Jamun_29 Start: 21575, Stop: 21234, Start Num: 85

Candidate Starts for Jamun_29:

(Start: 85 @21575 has 9 MA's), (125, 21482), (163, 21311), (180, 21251), (183, 21248),

Gene: Janeemi_48 Start: 35112, Stop: 35516, Start Num: 92

Candidate Starts for Janeemi_48:

(Start: 92 @35112 has 34 MA's), (151, 35292), (161, 35346), (201, 35490), (205, 35508),

Gene: Jarcob_60 Start: 40261, Stop: 40626, Start Num: 81

Candidate Starts for Jarcob_60:

(Start: 81 @40261 has 229 MA's), (100, 40294), (110, 40309), (112, 40312), (120, 40351), (122, 40354), (127, 40375), (133, 40408), (141, 40429), (142, 40435), (151, 40468), (158, 40510), (159, 40516), (192, 40612),

Gene: JasperJr_48 Start: 35005, Stop: 35367, Start Num: 77

Candidate Starts for JasperJr_48:

(39, 34861), (45, 34897), (57, 34936), (Start: 77 @35005 has 23 MA's), (119, 35104), (127, 35131), (128, 35134), (133, 35158), (192, 35353),

Gene: Jerole_38 Start: 21984, Stop: 21634, Start Num: 85

Candidate Starts for Jerole_38:

(21, 22308), (33, 22167), (53, 22074), (Start: 85 @21984 has 9 MA's), (183, 21651),

Gene: Jinglebell_65 Start: 42815, Stop: 43180, Start Num: 81

Candidate Starts for Jinglebell_65:

(Start: 81 @42815 has 229 MA's), (100, 42848), (110, 42863), (112, 42866), (120, 42905), (122, 42908), (127, 42929), (133, 42962), (142, 42989), (151, 43022), (158, 43064), (159, 43070), (192, 43166),

Gene: Job42_62 Start: 42198, Stop: 42563, Start Num: 81

Candidate Starts for Job42_62:

(Start: 81 @42198 has 229 MA's), (100, 42231), (110, 42246), (112, 42249), (120, 42288), (122, 42291), (127, 42312), (133, 42345), (141, 42366), (142, 42372), (151, 42405), (158, 42447), (159, 42453), (192, 42549),

Gene: Joemato_46 Start: 33415, Stop: 33828, Start Num: 92

Candidate Starts for Joemato_46:

(21, 33085), (Start: 92 @33415 has 34 MA's), (116, 33469), (151, 33595), (161, 33649), (204, 33802), (206, 33820),

Gene: JoeyJr_55 Start: 38710, Stop: 39075, Start Num: 81

Candidate Starts for JoeyJr_55:

(Start: 81 @38710 has 229 MA's), (100, 38743), (110, 38758), (112, 38761), (122, 38803), (127, 38824), (133, 38857), (141, 38878), (142, 38884), (151, 38917), (158, 38959), (159, 38965), (192, 39061),

Gene: JohnDoe_46 Start: 33411, Stop: 33824, Start Num: 92

Candidate Starts for JohnDoe_46:

(21, 33081), (Start: 92 @33411 has 34 MA's), (116, 33465), (151, 33591), (161, 33645), (204, 33798), (206, 33816),

Gene: Juice456_60 Start: 41762, Stop: 42115, Start Num: 81

Candidate Starts for Juice456_60:

(72, 41726), (Start: 81 @41762 has 229 MA's), (99, 41792), (100, 41795), (108, 41807), (112, 41813), (127, 41876), (129, 41885), (130, 41891), (158, 42005), (163, 42026), (184, 42083), (191, 42095),

Gene: Juice456_59 Start: 41418, Stop: 41765, Start Num: 82

Candidate Starts for Juice456_59:

(73, 41391), (Start: 78 @41409 has 1 MA's), (Start: 82 @41418 has 26 MA's), (100, 41448), (105, 41457), (114, 41475), (127, 41529), (133, 41556), (151, 41613), (155, 41643), (158, 41655),

Gene: JuicyJay_140 Start: 78831, Stop: 79184, Start Num: 84

Candidate Starts for JuicyJay_140:

(Start: 84 @78831 has 33 MA's), (151, 79032), (158, 79074),

Gene: JuneStar_48 Start: 35661, Stop: 36011, Start Num: 92

Candidate Starts for JuneStar_48:

(Start: 92 @35661 has 34 MA's), (116, 35715), (151, 35841),

Gene: Juniper1_56 Start: 39354, Stop: 39701, Start Num: 82

Candidate Starts for Juniper1_56:

(73, 39327), (Start: 78 @39345 has 1 MA's), (Start: 82 @39354 has 26 MA's), (Start: 92 @39366 has 34 MA's), (95, 39369), (100, 39384), (105, 39393), (114, 39411), (127, 39465), (133, 39492), (151, 39549), (155, 39579), (158, 39591),

Gene: Juniper1_59 Start: 40443, Stop: 40808, Start Num: 81

Candidate Starts for Juniper1_59:

(20, 40104), (24, 40122), (30, 40221), (31, 40230), (54, 40347), (55, 40353), (56, 40356), (Start: 81 @40443 has 229 MA's), (100, 40476), (105, 40485), (112, 40494), (127, 40557), (129, 40566), (134, 40593), (137, 40605), (142, 40617), (159, 40698), (184, 40770), (185, 40773),

Gene: Juniper1_57 Start: 39698, Stop: 40051, Start Num: 81

Candidate Starts for Juniper1_57:

(72, 39662), (Start: 81 @39698 has 229 MA's), (99, 39728), (100, 39731), (108, 39743), (112, 39749), (127, 39812), (129, 39821), (130, 39827), (158, 39941), (163, 39962), (184, 40019), (191, 40031),

Gene: Juno112_30 Start: 21210, Stop: 20869, Start Num: 91

Candidate Starts for Juno112_30:

(Start: 91 @21210 has 6 MA's), (Start: 101 @21192 has 2 MA's),

Gene: KHumphrey_31 Start: 21190, Stop: 20867, Start Num: 101
Candidate Starts for KHumphrey_31:
(Start: 91 @21208 has 6 MA's), (Start: 101 @21190 has 2 MA's),

Gene: Kalah2_135 Start: 76437, Stop: 76790, Start Num: 84
Candidate Starts for Kalah2_135:
(Start: 84 @76437 has 33 MA's), (151, 76638), (158, 76680),

Gene: Karhdo_57 Start: 39806, Stop: 40171, Start Num: 81
Candidate Starts for Karhdo_57:
(Start: 81 @39806 has 229 MA's), (100, 39839), (110, 39854), (112, 39857), (120, 39896), (122, 39899), (127, 39920), (133, 39953), (142, 39980), (151, 40013), (158, 40055), (159, 40061), (192, 40157),

Gene: KashFlow_143 Start: 75737, Stop: 76090, Start Num: 84
Candidate Starts for KashFlow_143:
(52, 75635), (Start: 84 @75737 has 33 MA's), (151, 75938), (158, 75980),

Gene: Kaylissa_47 Start: 33807, Stop: 34220, Start Num: 92
Candidate Starts for Kaylissa_47:
(Start: 92 @33807 has 34 MA's), (116, 33861), (151, 33987), (161, 34041), (204, 34194), (206, 34212),

Gene: Kenuha5_57 Start: 38874, Stop: 39239, Start Num: 81
Candidate Starts for Kenuha5_57:
(Start: 81 @38874 has 229 MA's), (100, 38907), (103, 38913), (112, 38925), (122, 38967), (129, 38997), (133, 39021), (134, 39024), (158, 39123), (159, 39129), (185, 39204),

Gene: Kersh_62 Start: 42556, Stop: 42921, Start Num: 81
Candidate Starts for Kersh_62:
(Start: 81 @42556 has 229 MA's), (100, 42589), (110, 42604), (112, 42607), (120, 42646), (122, 42649), (127, 42670), (133, 42703), (141, 42724), (142, 42730), (151, 42763), (158, 42805), (159, 42811), (192, 42907),

Gene: Kimberlium_63 Start: 42089, Stop: 42454, Start Num: 81
Candidate Starts for Kimberlium_63:
(Start: 81 @42089 has 229 MA's), (100, 42122), (110, 42137), (112, 42140), (120, 42179), (122, 42182), (127, 42203), (133, 42236), (141, 42257), (142, 42263), (151, 42296), (158, 42338), (159, 42344), (192, 42440),

Gene: Kimberlium_60 Start: 41117, Stop: 41464, Start Num: 82
Candidate Starts for Kimberlium_60:
(73, 41090), (Start: 78 @41108 has 1 MA's), (Start: 82 @41117 has 26 MA's), (100, 41147), (105, 41156), (114, 41174), (127, 41228), (133, 41255), (151, 41312), (155, 41342), (158, 41354),

Gene: Kimberlium_61 Start: 41461, Stop: 41814, Start Num: 81
Candidate Starts for Kimberlium_61:
(72, 41425), (Start: 81 @41461 has 229 MA's), (99, 41491), (100, 41494), (108, 41506), (112, 41512), (127, 41575), (129, 41584), (130, 41590), (158, 41704), (163, 41725), (184, 41782), (191, 41794),

Gene: KingMidas_59 Start: 40372, Stop: 40737, Start Num: 81
Candidate Starts for KingMidas_59:

(Start: 81 @40372 has 229 MA's), (100, 40405), (110, 40420), (112, 40423), (122, 40465), (127, 40486), (133, 40519), (141, 40540), (142, 40546), (151, 40579), (158, 40621), (159, 40627), (192, 40723),

Gene: Kingsley_56 Start: 38804, Stop: 39157, Start Num: 81

Candidate Starts for Kingsley_56:

(72, 38768), (Start: 81 @38804 has 229 MA's), (99, 38834), (100, 38837), (108, 38849), (112, 38855), (127, 38918), (129, 38927), (130, 38933), (158, 39047), (163, 39068), (184, 39125), (191, 39137),

Gene: Kingsley_55 Start: 38460, Stop: 38807, Start Num: 82

Candidate Starts for Kingsley_55:

(73, 38433), (Start: 78 @38451 has 1 MA's), (Start: 82 @38460 has 26 MA's), (100, 38490), (105, 38499), (114, 38517), (127, 38571), (133, 38598), (151, 38655), (155, 38685), (158, 38697),

Gene: Klein_142 Start: 75039, Stop: 75392, Start Num: 84

Candidate Starts for Klein_142:

(Start: 84 @75039 has 33 MA's), (151, 75240), (158, 75282),

Gene: Klevey_55 Start: 37550, Stop: 37951, Start Num: 88

Candidate Starts for Klevey_55:

(Start: 88 @37550 has 6 MA's),

Gene: Koella_54 Start: 36191, Stop: 36556, Start Num: 81

Candidate Starts for Koella_54:

(Start: 81 @36191 has 229 MA's), (100, 36224), (110, 36239), (112, 36242), (120, 36281), (122, 36284), (127, 36305), (133, 36338), (142, 36365), (151, 36398), (158, 36440), (159, 36446), (192, 36542),

Gene: Krakatau_57 Start: 39569, Stop: 39934, Start Num: 81

Candidate Starts for Krakatau_57:

(Start: 81 @39569 has 229 MA's), (100, 39602), (112, 39620), (129, 39692), (133, 39716), (134, 39719), (158, 39818), (159, 39824), (185, 39899),

Gene: KristaRAM_63 Start: 42760, Stop: 43125, Start Num: 81

Candidate Starts for KristaRAM_63:

(Start: 81 @42760 has 229 MA's), (100, 42793), (110, 42808), (112, 42811), (122, 42853), (127, 42874), (133, 42907), (142, 42934), (151, 42967), (158, 43009), (159, 43015), (192, 43111),

Gene: LastJedi_54 Start: 37508, Stop: 37873, Start Num: 81

Candidate Starts for LastJedi_54:

(Start: 81 @37508 has 229 MA's), (100, 37541), (110, 37556), (112, 37559), (120, 37598), (122, 37601), (127, 37622), (133, 37655), (142, 37682), (151, 37715), (158, 37757), (159, 37763), (192, 37859),

Gene: Latretium_62 Start: 40834, Stop: 41199, Start Num: 81

Candidate Starts for Latretium_62:

(Start: 81 @40834 has 229 MA's), (100, 40867), (110, 40882), (112, 40885), (120, 40924), (122, 40927), (127, 40948), (142, 41008), (151, 41041), (158, 41083), (159, 41089), (192, 41185),

Gene: Lawnathon_76 Start: 42050, Stop: 42439, Start Num: 89

Candidate Starts for Lawnathon_76:

(Start: 89 @42050 has 19 MA's), (131, 42173), (143, 42206), (146, 42221), (156, 42275),

Gene: Lego_45 Start: 33126, Stop: 33539, Start Num: 92

Candidate Starts for Lego_45:

(Start: 92 @33126 has 34 MA's), (116, 33180), (151, 33306), (161, 33360), (204, 33513), (206, 33531),

Gene: Leozinho_59 Start: 39590, Stop: 39955, Start Num: 81

Candidate Starts for Leozinho_59:

(Start: 81 @39590 has 229 MA's), (100, 39623), (110, 39638), (112, 39641), (122, 39683), (127, 39704), (133, 39737), (141, 39758), (142, 39764), (151, 39797), (158, 39839), (159, 39845), (192, 39941),

Gene: Leperchaun_52 Start: 37940, Stop: 38305, Start Num: 81

Candidate Starts for Leperchaun_52:

(Start: 81 @37940 has 229 MA's), (100, 37973), (110, 37988), (112, 37991), (122, 38033), (127, 38054), (133, 38087), (141, 38108), (142, 38114), (151, 38147), (158, 38189), (159, 38195), (192, 38291),

Gene: Liebe_46 Start: 34755, Stop: 35162, Start Num: 92

Candidate Starts for Liebe_46:

(80, 34737), (Start: 92 @34755 has 34 MA's), (113, 34800), (125, 34845), (127, 34860),

Gene: Ligma_48 Start: 41091, Stop: 40741, Start Num: 65

Candidate Starts for Ligma_48:

(Start: 65 @41091 has 10 MA's), (107, 41046), (112, 41037), (116, 41022), (127, 40974), (151, 40893),

Gene: LilMoolah_58 Start: 39703, Stop: 40068, Start Num: 81

Candidate Starts for LilMoolah_58:

(Start: 81 @39703 has 229 MA's), (100, 39736), (110, 39751), (112, 39754), (120, 39793), (122, 39796), (127, 39817), (133, 39850), (141, 39871), (142, 39877), (151, 39910), (158, 39952), (159, 39958), (192, 40054),

Gene: Lilmac1015_57 Start: 38014, Stop: 38406, Start Num: 88

Candidate Starts for Lilmac1015_57:

(Start: 88 @38014 has 6 MA's), (170, 38299), (183, 38335),

Gene: LittleMunchkin_50 Start: 44298, Stop: 43924, Start Num: 65

Candidate Starts for LittleMunchkin_50:

(25, 44523), (Start: 65 @44298 has 10 MA's), (112, 44229), (126, 44175), (130, 44151), (179, 43965),

Gene: LittleShirley_59 Start: 40750, Stop: 41115, Start Num: 81

Candidate Starts for LittleShirley_59:

(Start: 81 @40750 has 229 MA's), (100, 40783), (110, 40798), (112, 40801), (120, 40840), (122, 40843), (127, 40864), (133, 40897), (142, 40924), (151, 40957), (158, 40999), (159, 41005), (192, 41101),

Gene: LittleTokyo_33 Start: 21980, Stop: 21597, Start Num: 91

Candidate Starts for LittleTokyo_33:

(Start: 91 @21980 has 6 MA's), (154, 21776),

Gene: Lizalica_44 Start: 32567, Stop: 32941, Start Num: 92

Candidate Starts for Lizalica_44:

(Start: 92 @32567 has 34 MA's), (127, 32672), (151, 32750), (161, 32804),

Gene: Lizziana_66 Start: 41261, Stop: 41626, Start Num: 81

Candidate Starts for Lizziana_66:

(Start: 81 @41261 has 229 MA's), (100, 41294), (110, 41309), (112, 41312), (120, 41351), (122, 41354), (127, 41375), (133, 41408), (142, 41435), (151, 41468), (158, 41510), (159, 41516), (192, 41612),

Gene: Llama_65 Start: 42669, Stop: 43034, Start Num: 81

Candidate Starts for Llama_65:

(Start: 81 @42669 has 229 MA's), (100, 42702), (110, 42717), (112, 42720), (120, 42759), (122, 42762), (127, 42783), (133, 42816), (142, 42843), (151, 42876), (158, 42918), (159, 42924), (192, 43020),

Gene: Llij_56 Start: 39114, Stop: 39479, Start Num: 81

Candidate Starts for Llij_56:

(Start: 81 @39114 has 229 MA's), (100, 39147), (110, 39162), (112, 39165), (120, 39204), (122, 39207), (127, 39228), (133, 39261), (141, 39282), (142, 39288), (151, 39321), (158, 39363), (159, 39369), (192, 39465),

Gene: Lorde_60 Start: 38401, Stop: 38766, Start Num: 81

Candidate Starts for Lorde_60:

(Start: 81 @38401 has 229 MA's), (100, 38434), (110, 38449), (112, 38452), (120, 38491), (122, 38494), (127, 38515), (133, 38548), (141, 38569), (142, 38575), (151, 38608), (158, 38650), (159, 38656), (192, 38752),

Gene: Lucky2013_136 Start: 72791, Stop: 73144, Start Num: 84

Candidate Starts for Lucky2013_136:

(52, 72689), (Start: 84 @72791 has 33 MA's), (151, 72992), (158, 73034),

Gene: LunaBlu_62 Start: 40835, Stop: 41200, Start Num: 81

Candidate Starts for LunaBlu_62:

(Start: 81 @40835 has 229 MA's), (100, 40868), (110, 40883), (112, 40886), (120, 40925), (122, 40928), (127, 40949), (142, 41009), (151, 41042), (158, 41084), (159, 41090), (192, 41186),

Gene: LunaStella_56 Start: 38713, Stop: 39060, Start Num: 82

Candidate Starts for LunaStella_56:

(73, 38686), (Start: 78 @38704 has 1 MA's), (Start: 82 @38713 has 26 MA's), (Start: 92 @38725 has 34 MA's), (100, 38743), (105, 38752), (122, 38803), (127, 38824), (145, 38887), (151, 38908), (155, 38938),

Gene: LunaStella_57 Start: 39057, Stop: 39410, Start Num: 81

Candidate Starts for LunaStella_57:

(72, 39021), (Start: 81 @39057 has 229 MA's), (108, 39102), (112, 39108), (127, 39171), (129, 39180), (139, 39216), (146, 39240), (191, 39390),

Gene: LunaStella_59 Start: 39682, Stop: 40047, Start Num: 81

Candidate Starts for LunaStella_59:

(Start: 81 @39682 has 229 MA's), (100, 39715), (112, 39733), (120, 39772), (122, 39775), (127, 39796), (129, 39805), (133, 39829), (142, 39856), (151, 39889), (158, 39931), (159, 39937), (192, 40033),

Gene: Lysidious_52 Start: 36936, Stop: 37298, Start Num: 77

Candidate Starts for Lysidious_52:

(37, 36786), (39, 36792), (45, 36828), (57, 36867), (Start: 77 @36936 has 23 MA's), (128, 37065), (133, 37089),

Gene: MaGuCo_43 Start: 33237, Stop: 33617, Start Num: 92

Candidate Starts for MaGuCo_43:

(62, 33171), (71, 33189), (Start: 92 @33237 has 34 MA's), (98, 33249), (113, 33282), (125, 33327), (127, 33342), (144, 33396),

Gene: MadMen_58 Start: 40038, Stop: 40403, Start Num: 81

Candidate Starts for MadMen_58:

(Start: 81 @40038 has 229 MA's), (100, 40071), (110, 40086), (112, 40089), (122, 40131), (127, 40152), (133, 40185), (142, 40212), (151, 40245), (158, 40287), (159, 40293), (192, 40389),

Gene: Madiba_58 Start: 39287, Stop: 39652, Start Num: 81

Candidate Starts for Madiba_58:

(Start: 81 @39287 has 229 MA's), (100, 39320), (110, 39335), (112, 39338), (122, 39380), (127, 39401), (133, 39434), (142, 39461), (151, 39494), (158, 39536), (159, 39542), (192, 39638),

Gene: Mahavrat_58 Start: 39663, Stop: 40028, Start Num: 81

Candidate Starts for Mahavrat_58:

(Start: 81 @39663 has 229 MA's), (100, 39696), (110, 39711), (112, 39714), (120, 39753), (122, 39756), (127, 39777), (142, 39837), (151, 39870), (158, 39912), (159, 39918), (192, 40014),

Gene: Malachai_49 Start: 37159, Stop: 37521, Start Num: 77

Candidate Starts for Malachai_49:

(57, 37090), (Start: 77 @37159 has 23 MA's), (119, 37258), (127, 37285), (128, 37288), (133, 37312), (192, 37507),

Gene: MalagasyRose_65 Start: 42032, Stop: 42385, Start Num: 91

Candidate Starts for MalagasyRose_65:

(42, 41891), (69, 41975), (Start: 91 @42032 has 6 MA's), (118, 42101), (122, 42113), (127, 42134), (150, 42209), (155, 42248), (158, 42260), (163, 42281), (175, 42323), (182, 42344),

Gene: Mandlovu_56 Start: 38273, Stop: 38638, Start Num: 81

Candidate Starts for Mandlovu_56:

(Start: 81 @38273 has 229 MA's), (100, 38306), (110, 38321), (112, 38324), (122, 38366), (127, 38387), (133, 38420), (141, 38441), (142, 38447), (158, 38522), (159, 38528), (192, 38624),

Gene: Maravista_61 Start: 41710, Stop: 42075, Start Num: 81

Candidate Starts for Maravista_61:

(Start: 81 @41710 has 229 MA's), (100, 41743), (110, 41758), (112, 41761), (120, 41800), (122, 41803), (127, 41824), (133, 41857), (142, 41884), (151, 41917), (158, 41959), (159, 41965), (192, 42061),

Gene: Mariokart_48 Start: 41216, Stop: 40896, Start Num: 81

Candidate Starts for Mariokart_48:

(Start: 65 @41234 has 10 MA's), (Start: 81 @41216 has 229 MA's), (126, 41138), (127, 41129), (156, 41012), (159, 41000),

Gene: Marker_62 Start: 40381, Stop: 40746, Start Num: 81

Candidate Starts for Marker_62:

(Start: 81 @40381 has 229 MA's), (100, 40414), (110, 40429), (112, 40432), (122, 40474), (127, 40495), (142, 40555), (151, 40588), (158, 40630), (159, 40636), (192, 40732),

Gene: Martik_60 Start: 40214, Stop: 40579, Start Num: 81

Candidate Starts for Martik_60:

(Start: 81 @40214 has 229 MA's), (100, 40247), (110, 40262), (112, 40265), (120, 40304), (122, 40307), (127, 40328), (133, 40361), (142, 40388), (151, 40421), (158, 40463), (159, 40469), (192, 40565),

Gene: Mattes_64 Start: 41780, Stop: 42145, Start Num: 81

Candidate Starts for Mattes_64:

(Start: 81 @41780 has 229 MA's), (100, 41813), (110, 41828), (112, 41831), (120, 41870), (122, 41873), (127, 41894), (133, 41927), (142, 41954), (151, 41987), (158, 42029), (159, 42035), (192, 42131),

Gene: Maureen_46 Start: 34755, Stop: 35162, Start Num: 92

Candidate Starts for Maureen_46:

(80, 34737), (Start: 92 @34755 has 34 MA's), (113, 34800), (125, 34845), (127, 34860),

Gene: Melba_50 Start: 35408, Stop: 35770, Start Num: 77

Candidate Starts for Melba_50:

(39, 35264), (45, 35300), (57, 35339), (Start: 77 @35408 has 23 MA's), (128, 35537), (133, 35561),

Gene: Melissauren88_58 Start: 39794, Stop: 40159, Start Num: 81

Candidate Starts for Melissauren88_58:

(Start: 81 @39794 has 229 MA's), (100, 39827), (103, 39833), (112, 39845), (122, 39887), (129, 39917), (133, 39941), (134, 39944), (158, 40043), (159, 40049), (185, 40124),

Gene: Mellie_49 Start: 35048, Stop: 35410, Start Num: 76

Candidate Starts for Mellie_49:

(45, 34943), (Start: 76 @35048 has 1 MA's), (119, 35147), (127, 35174), (128, 35177), (133, 35201),

Gene: MenE_59 Start: 34205, Stop: 34642, Start Num: 96

Candidate Starts for MenE_59:

(6, 33605), (15, 33728), (Start: 96 @34205 has 9 MA's), (127, 34301), (133, 34328), (149, 34376), (160, 34433), (161, 34439), (166, 34460), (189, 34526), (196, 34556), (200, 34580), (203, 34592),

Gene: MiaZeal_143 Start: 73930, Stop: 74283, Start Num: 84

Candidate Starts for MiaZeal_143:

(52, 73828), (Start: 84 @73930 has 33 MA's), (151, 74131), (158, 74173),

Gene: MidnightRain_81 Start: 43270, Stop: 43659, Start Num: 89

Candidate Starts for MidnightRain_81:

(Start: 89 @43270 has 19 MA's), (131, 43393), (143, 43426), (146, 43441), (156, 43495),

Gene: MilanaBonita_50 Start: 36387, Stop: 36752, Start Num: 81

Candidate Starts for MilanaBonita_50:

(Start: 81 @36387 has 229 MA's), (100, 36420), (103, 36426), (112, 36438), (122, 36480), (129, 36510), (133, 36534), (134, 36537), (158, 36636), (159, 36642), (185, 36717), (187, 36720), (188, 36723),

Gene: MilleniumForce_63 Start: 42482, Stop: 42847, Start Num: 81

Candidate Starts for MilleniumForce_63:

(Start: 81 @42482 has 229 MA's), (100, 42515), (103, 42521), (112, 42533), (129, 42605), (133, 42629), (134, 42632), (142, 42656), (158, 42731), (159, 42737), (185, 42812),

Gene: Minerva_144 Start: 76488, Stop: 76841, Start Num: 84

Candidate Starts for Minerva_144:

(Start: 84 @76488 has 33 MA's), (151, 76689), (158, 76731),

Gene: MinionDave_59 Start: 40561, Stop: 40926, Start Num: 81

Candidate Starts for MinionDave_59:

(Start: 81 @40561 has 229 MA's), (100, 40594), (110, 40609), (112, 40612), (120, 40651), (122, 40654), (127, 40675), (133, 40708), (142, 40735), (151, 40768), (158, 40810), (159, 40816), (192, 40912),

Gene: Minnie_63 Start: 41784, Stop: 42149, Start Num: 81

Candidate Starts for Minnie_63:

(Start: 81 @41784 has 229 MA's), (100, 41817), (105, 41826), (112, 41835), (122, 41877), (129, 41907), (133, 41931), (134, 41934), (158, 42033), (159, 42039), (185, 42114),

Gene: MintFen_51 Start: 35482, Stop: 35844, Start Num: 77

Candidate Starts for MintFen_51:

(39, 35338), (45, 35374), (57, 35413), (Start: 77 @35482 has 23 MA's), (128, 35611), (133, 35635),

Gene: MisterCuddles_58 Start: 40017, Stop: 40382, Start Num: 81

Candidate Starts for MisterCuddles_58:

(Start: 81 @40017 has 229 MA's), (100, 40050), (110, 40065), (112, 40068), (120, 40107), (122, 40110), (127, 40131), (142, 40191), (151, 40224), (158, 40266), (159, 40272), (192, 40368),

Gene: Modragons_64 Start: 42659, Stop: 43024, Start Num: 81

Candidate Starts for Modragons_64:

(Start: 81 @42659 has 229 MA's), (100, 42692), (110, 42707), (112, 42710), (120, 42749), (122, 42752), (127, 42773), (133, 42806), (142, 42833), (151, 42866), (158, 42908), (159, 42914), (192, 43010),

Gene: Moonbeam_58 Start: 39938, Stop: 40303, Start Num: 81

Candidate Starts for Moonbeam_58:

(Start: 81 @39938 has 229 MA's), (100, 39971), (112, 39989), (122, 40031), (129, 40061), (133, 40085), (134, 40088), (158, 40187), (185, 40268), (187, 40271), (188, 40274),

Gene: Mova_61 Start: 39791, Stop: 40156, Start Num: 81

Candidate Starts for Mova_61:

(Start: 81 @39791 has 229 MA's), (100, 39824), (110, 39839), (112, 39842), (122, 39884), (127, 39905), (133, 39938), (142, 39965), (151, 39998), (158, 40040), (159, 40046), (192, 40142),

Gene: Mozy_69 Start: 42795, Stop: 43160, Start Num: 81

Candidate Starts for Mozy_69:

(Start: 81 @42795 has 229 MA's), (100, 42828), (110, 42843), (112, 42846), (120, 42885), (122, 42888), (127, 42909), (142, 42969), (151, 43002), (158, 43044), (159, 43050), (192, 43146),

Gene: Ms6_55 Start: 35525, Stop: 35890, Start Num: 81

Candidate Starts for Ms6_55:

(Start: 81 @35525 has 229 MA's), (100, 35558), (103, 35564), (112, 35576), (122, 35618), (129, 35648), (133, 35672), (134, 35675), (158, 35774), (159, 35780), (185, 35855),

Gene: Mudpuppy_42 Start: 33064, Stop: 33480, Start Num: 92

Candidate Starts for Mudpuppy_42:

(Start: 92 @33064 has 34 MA's), (116, 33118), (151, 33244), (161, 33298), (204, 33454), (206, 33472),

Gene: Mufasa8_70 Start: 44952, Stop: 45344, Start Num: 87

Candidate Starts for Mufasa8_70:

(46, 44829), (68, 44901), (Start: 87 @44952 has 1 MA's), (123, 45045),

Gene: MulchExplorer_64 Start: 41116, Stop: 41463, Start Num: 82

Candidate Starts for MulchExplorer_64:

(73, 41089), (Start: 78 @41107 has 1 MA's), (Start: 82 @41116 has 26 MA's), (100, 41146), (105, 41155), (114, 41173), (127, 41227), (133, 41254), (151, 41311), (155, 41341), (158, 41353),

Gene: MulchExplorer_65 Start: 41460, Stop: 41813, Start Num: 81

Candidate Starts for MulchExplorer_65:

(72, 41424), (Start: 81 @41460 has 229 MA's), (99, 41490), (100, 41493), (108, 41505), (112, 41511), (127, 41574), (129, 41583), (130, 41589), (158, 41703), (163, 41724), (184, 41781), (191, 41793),

Gene: MulchExplorer_67 Start: 42088, Stop: 42453, Start Num: 81

Candidate Starts for MulchExplorer_67:

(Start: 81 @42088 has 229 MA's), (100, 42121), (110, 42136), (112, 42139), (120, 42178), (122, 42181), (127, 42202), (133, 42235), (141, 42256), (142, 42262), (151, 42295), (158, 42337), (159, 42343), (192, 42439),

Gene: Mutaforma13_64 Start: 43121, Stop: 43486, Start Num: 81

Candidate Starts for Mutaforma13_64:

(Start: 81 @43121 has 229 MA's), (100, 43154), (110, 43169), (112, 43172), (120, 43211), (122, 43214), (127, 43235), (133, 43268), (142, 43295), (151, 43328), (158, 43370), (159, 43376), (192, 43472),

Gene: Myrna_64 Start: 24516, Stop: 24944, Start Num: 66

Candidate Starts for Myrna_64:

(40, 24411), (Start: 66 @24516 has 3 MA's), (75, 24546), (121, 24660), (127, 24684), (131, 24711), (153, 24780), (163, 24828),

Gene: NihilNomen_146 Start: 76776, Stop: 77129, Start Num: 84

Candidate Starts for NihilNomen_146:

(Start: 84 @76776 has 33 MA's), (151, 76977), (158, 77019),

Gene: Nitro_44 Start: 33699, Stop: 34070, Start Num: 92

Candidate Starts for Nitro_44:

(Start: 92 @33699 has 34 MA's), (125, 33786), (151, 33879), (161, 33933), (191, 34026),

Gene: Nivrat_56 Start: 39576, Stop: 39941, Start Num: 81

Candidate Starts for Nivrat_56:

(Start: 81 @39576 has 229 MA's), (100, 39609), (110, 39624), (112, 39627), (120, 39666), (122, 39669), (127, 39690), (133, 39723), (141, 39744), (142, 39750), (151, 39783), (158, 39825), (159, 39831), (192, 39927),

Gene: NormanBulbieJr_60 Start: 40204, Stop: 40569, Start Num: 81

Candidate Starts for NormanBulbieJr_60:

(Start: 81 @40204 has 229 MA's), (100, 40237), (110, 40252), (112, 40255), (120, 40294), (122, 40297), (127, 40318), (133, 40351), (142, 40378), (151, 40411), (158, 40453), (159, 40459), (192, 40555),

Gene: ObiToo_51 Start: 34185, Stop: 34577, Start Num: 92

Candidate Starts for ObiToo_51:

(Start: 92 @34185 has 34 MA's), (116, 34239), (151, 34365), (198, 34551), (202, 34569),

Gene: Ochi17_63 Start: 42266, Stop: 42631, Start Num: 81

Candidate Starts for Ochi17_63:

(Start: 81 @42266 has 229 MA's), (100, 42299), (110, 42314), (112, 42317), (120, 42356), (122, 42359), (127, 42380), (133, 42413), (142, 42440), (151, 42473), (158, 42515), (159, 42521), (192, 42617),

Gene: Odette_148 Start: 78919, Stop: 79272, Start Num: 84

Candidate Starts for Odette_148:

(Start: 84 @78919 has 33 MA's), (151, 79120), (158, 79162),

Gene: OfUltron_65 Start: 42815, Stop: 43180, Start Num: 81

Candidate Starts for OfUltron_65:

(Start: 81 @42815 has 229 MA's), (100, 42848), (110, 42863), (112, 42866), (120, 42905), (122, 42908), (127, 42929), (133, 42962), (142, 42989), (151, 43022), (158, 43064), (159, 43070), (192, 43166),

Gene: Ogopogo_65 Start: 40778, Stop: 41143, Start Num: 81

Candidate Starts for Ogopogo_65:

(Start: 81 @40778 has 229 MA's), (100, 40811), (103, 40817), (112, 40829), (122, 40871), (129, 40901), (133, 40925), (134, 40928), (158, 41027), (159, 41033), (185, 41108), (187, 41111), (188, 41114),

Gene: Oksu_64 Start: 43078, Stop: 43443, Start Num: 81

Candidate Starts for Oksu_64:

(Start: 81 @43078 has 229 MA's), (100, 43111), (110, 43126), (112, 43129), (120, 43168), (122, 43171), (127, 43192), (133, 43225), (142, 43252), (151, 43285), (158, 43327), (159, 43333), (192, 43429),

Gene: OldBen_57 Start: 40129, Stop: 40494, Start Num: 81

Candidate Starts for OldBen_57:

(Start: 81 @40129 has 229 MA's), (100, 40162), (110, 40177), (112, 40180), (122, 40222), (127, 40243), (142, 40303), (151, 40336), (158, 40378), (159, 40384), (192, 40480),

Gene: OlinDD_71 Start: 44929, Stop: 44579, Start Num: 97

Candidate Starts for OlinDD_71:

(43, 45070), (70, 44986), (Start: 97 @44929 has 6 MA's), (107, 44902), (112, 44893), (113, 44890), (128, 44827), (131, 44803), (176, 44626), (180, 44611), (190, 44590),

Gene: OlympiaSaint_62 Start: 40722, Stop: 41087, Start Num: 81

Candidate Starts for OlympiaSaint_62:

(Start: 81 @40722 has 229 MA's), (100, 40755), (110, 40770), (112, 40773), (120, 40812), (122, 40815), (127, 40836), (133, 40869), (142, 40896), (151, 40929), (158, 40971), (159, 40977), (192, 41073),

Gene: Optimus_135 Start: 74056, Stop: 74409, Start Num: 84

Candidate Starts for Optimus_135:

(Start: 84 @74056 has 33 MA's), (151, 74257), (158, 74299),

Gene: Orcanus_30 Start: 22223, Stop: 21873, Start Num: 85
Candidate Starts for Orcanus_30:
(Start: 85 @22223 has 9 MA's), (125, 22124), (183, 21890),

Gene: Ovechkin_57 Start: 39962, Stop: 40309, Start Num: 82
Candidate Starts for Ovechkin_57:
(73, 39935), (Start: 78 @39953 has 1 MA's), (Start: 82 @39962 has 26 MA's), (100, 39992), (105, 40001), (114, 40019), (127, 40073), (133, 40100), (151, 40157), (155, 40187), (158, 40199),

Gene: Ovechkin_58 Start: 40306, Stop: 40659, Start Num: 81
Candidate Starts for Ovechkin_58:
(72, 40270), (Start: 81 @40306 has 229 MA's), (99, 40336), (100, 40339), (108, 40351), (112, 40357), (127, 40420), (129, 40429), (130, 40435), (158, 40549), (163, 40570), (184, 40627), (191, 40639),

Gene: OwlsT2W_60 Start: 40441, Stop: 40806, Start Num: 81
Candidate Starts for OwlsT2W_60:
(Start: 81 @40441 has 229 MA's), (100, 40474), (110, 40489), (112, 40492), (120, 40531), (122, 40534), (127, 40555), (133, 40588), (142, 40615), (151, 40648), (158, 40690), (159, 40696), (192, 40792),

Gene: PHappiness_55 Start: 38486, Stop: 38851, Start Num: 81
Candidate Starts for PHappiness_55:
(Start: 81 @38486 has 229 MA's), (100, 38519), (110, 38534), (112, 38537), (122, 38579), (127, 38600), (133, 38633), (141, 38654), (142, 38660), (151, 38693), (158, 38735), (159, 38741), (192, 38837),

Gene: PMC_57 Start: 40831, Stop: 41196, Start Num: 81
Candidate Starts for PMC_57:
(Start: 81 @40831 has 229 MA's), (100, 40864), (110, 40879), (112, 40882), (120, 40921), (122, 40924), (127, 40945), (133, 40978), (142, 41005), (151, 41038), (158, 41080), (159, 41086), (192, 41182),

Gene: Pacc40_54 Start: 38560, Stop: 38925, Start Num: 81
Candidate Starts for Pacc40_54:
(Start: 81 @38560 has 229 MA's), (100, 38593), (110, 38608), (112, 38611), (122, 38653), (127, 38674), (133, 38707), (141, 38728), (142, 38734), (151, 38767), (158, 38809), (159, 38815), (192, 38911),

Gene: Persistence_70 Start: 40343, Stop: 40708, Start Num: 89
Candidate Starts for Persistence_70:
(Start: 89 @40343 has 19 MA's), (112, 40376), (116, 40391), (127, 40439), (143, 40499), (155, 40562),

Gene: Phabba_70 Start: 24981, Stop: 25430, Start Num: 66
Candidate Starts for Phabba_70:
(Start: 66 @24981 has 3 MA's), (106, 25074), (121, 25125), (131, 25176), (147, 25236), (154, 25272), (163, 25314),

Gene: Phalconet_58 Start: 39065, Stop: 39430, Start Num: 81
Candidate Starts for Phalconet_58:
(Start: 81 @39065 has 229 MA's), (100, 39098), (103, 39104), (112, 39116), (116, 39131), (122, 39158), (129, 39188), (133, 39212), (134, 39215), (158, 39314), (159, 39320), (185, 39395),

Gene: Phanphagia_57 Start: 40656, Stop: 41021, Start Num: 81

Candidate Starts for Phanphagia_57:

(Start: 81 @40656 has 229 MA's), (100, 40689), (103, 40695), (112, 40707), (122, 40749), (129, 40779), (133, 40803), (134, 40806), (158, 40905), (159, 40911), (185, 40986),

Gene: Phasih_58 Start: 40630, Stop: 40995, Start Num: 81

Candidate Starts for Phasih_58:

(Start: 81 @40630 has 229 MA's), (100, 40663), (110, 40678), (112, 40681), (120, 40720), (122, 40723), (127, 40744), (142, 40804), (151, 40837), (158, 40879), (159, 40885), (181, 40954), (192, 40981),

Gene: Phatniss_58 Start: 40209, Stop: 40574, Start Num: 81

Candidate Starts for Phatniss_58:

(Start: 81 @40209 has 229 MA's), (100, 40242), (110, 40257), (112, 40260), (120, 40299), (122, 40302), (127, 40323), (133, 40356), (141, 40377), (142, 40383), (151, 40416), (158, 40458), (159, 40464), (192, 40560),

Gene: PhesterPhotato_60 Start: 39882, Stop: 40247, Start Num: 81

Candidate Starts for PhesterPhotato_60:

(Start: 81 @39882 has 229 MA's), (100, 39915), (103, 39921), (112, 39933), (116, 39948), (122, 39975), (129, 40005), (133, 40029), (134, 40032), (158, 40131), (159, 40137), (185, 40212),

Gene: Philus_63 Start: 41366, Stop: 41731, Start Num: 81

Candidate Starts for Philus_63:

(Start: 81 @41366 has 229 MA's), (100, 41399), (110, 41414), (112, 41417), (120, 41456), (122, 41459), (127, 41480), (133, 41513), (141, 41534), (142, 41540), (151, 41573), (158, 41615), (159, 41621), (192, 41717),

Gene: Phives_50 Start: 35604, Stop: 36011, Start Num: 90

Candidate Starts for Phives_50:

(Start: 90 @35604 has 1 MA's), (151, 35787), (161, 35841), (191, 35934), (201, 35985), (205, 36003),

Gene: PhluffyCoco_31 Start: 21194, Stop: 20853, Start Num: 91

Candidate Starts for PhluffyCoco_31:

(Start: 91 @21194 has 6 MA's), (Start: 101 @21176 has 2 MA's),

Gene: Phoebus_144 Start: 78670, Stop: 79023, Start Num: 84

Candidate Starts for Phoebus_144:

(Start: 84 @78670 has 33 MA's), (151, 78871), (158, 78913),

Gene: Phonegingi_58 Start: 34265, Stop: 34702, Start Num: 96

Candidate Starts for Phonegingi_58:

(17, 33854), (Start: 96 @34265 has 9 MA's), (133, 34388), (149, 34436), (151, 34445), (160, 34493), (161, 34499), (166, 34520), (189, 34586), (196, 34616), (203, 34652),

Gene: Phrank15_80 Start: 42781, Stop: 43146, Start Num: 89

Candidate Starts for Phrank15_80:

(54, 42679), (Start: 89 @42781 has 19 MA's), (112, 42814), (123, 42856), (127, 42877), (143, 42937), (155, 43000),

Gene: Phrappuccino_165 Start: 110158, Stop: 110505, Start Num: 92

Candidate Starts for Phrappuccino_165:

(Start: 92 @110158 has 34 MA's), (107, 110191), (109, 110194), (112, 110200), (127, 110263), (177, 110455),

Gene: Pickles13_57 Start: 34624, Stop: 35061, Start Num: 96

Candidate Starts for Pickles13_57:

(79, 34597), (Start: 96 @34624 has 9 MA's), (125, 34705), (133, 34747), (149, 34795), (160, 34852), (161, 34858), (166, 34879), (189, 34945), (196, 34975), (203, 35011),

Gene: Pioneer3_71 Start: 44751, Stop: 44401, Start Num: 97

Candidate Starts for Pioneer3_71:

(43, 44892), (70, 44808), (Start: 97 @44751 has 6 MA's), (107, 44724), (112, 44715), (113, 44712), (128, 44649), (131, 44625), (176, 44448), (180, 44433), (190, 44412),

Gene: Pippy_58 Start: 39072, Stop: 39437, Start Num: 81

Candidate Starts for Pippy_58:

(Start: 81 @39072 has 229 MA's), (100, 39105), (110, 39120), (112, 39123), (120, 39162), (122, 39165), (127, 39186), (133, 39219), (142, 39246), (151, 39279), (158, 39321), (159, 39327), (192, 39423),

Gene: Pixelle_47 Start: 35172, Stop: 35567, Start Num: 92

Candidate Starts for Pixelle_47:

(Start: 92 @35172 has 34 MA's), (116, 35226), (151, 35352),

Gene: Platte_71 Start: 44704, Stop: 44354, Start Num: 97

Candidate Starts for Platte_71:

(70, 44761), (Start: 97 @44704 has 6 MA's), (107, 44677), (112, 44668), (113, 44665), (128, 44602), (131, 44578), (176, 44401), (180, 44386), (190, 44365),

Gene: Plumbus_62 Start: 40530, Stop: 40895, Start Num: 81

Candidate Starts for Plumbus_62:

(Start: 81 @40530 has 229 MA's), (100, 40563), (110, 40578), (112, 40581), (122, 40623), (127, 40644), (133, 40677), (141, 40698), (142, 40704), (151, 40737), (158, 40779), (159, 40785), (192, 40881),

Gene: Poenanya_60 Start: 41387, Stop: 41752, Start Num: 81

Candidate Starts for Poenanya_60:

(Start: 81 @41387 has 229 MA's), (100, 41420), (110, 41435), (112, 41438), (122, 41480), (127, 41501), (133, 41534), (141, 41555), (142, 41561), (151, 41594), (158, 41636), (159, 41642), (192, 41738),

Gene: Polka_32 Start: 21713, Stop: 21363, Start Num: 85

Candidate Starts for Polka_32:

(Start: 85 @21713 has 9 MA's), (183, 21380),

Gene: Polka14_58 Start: 39583, Stop: 39948, Start Num: 81

Candidate Starts for Polka14_58:

(Start: 81 @39583 has 229 MA's), (100, 39616), (110, 39631), (112, 39634), (120, 39673), (122, 39676), (127, 39697), (133, 39730), (142, 39757), (151, 39790), (158, 39832), (159, 39838), (192, 39934),

Gene: Pollywog_61 Start: 41040, Stop: 41405, Start Num: 81

Candidate Starts for Pollywog_61:

(Start: 81 @41040 has 229 MA's), (100, 41073), (110, 41088), (112, 41091), (120, 41130), (122, 41133), (127, 41154), (133, 41187), (142, 41214), (151, 41247), (158, 41289), (159, 41295), (192, 41391),

Gene: PopTart_54 Start: 38690, Stop: 39055, Start Num: 81

Candidate Starts for PopTart_54:

(Start: 81 @38690 has 229 MA's), (100, 38723), (103, 38729), (112, 38741), (122, 38783), (129, 38813), (133, 38837), (134, 38840), (158, 38939), (159, 38945), (185, 39020),

Gene: Porcelain_140 Start: 73737, Stop: 74090, Start Num: 84

Candidate Starts for Porcelain_140:

(52, 73635), (Start: 84 @73737 has 33 MA's), (151, 73938), (158, 73980),

Gene: Pound_136 Start: 76489, Stop: 76842, Start Num: 84

Candidate Starts for Pound_136:

(48, 76375), (52, 76387), (Start: 84 @76489 has 33 MA's), (151, 76690), (158, 76732),

Gene: Powerpuff_48 Start: 34514, Stop: 34927, Start Num: 92

Candidate Starts for Powerpuff_48:

(Start: 92 @34514 has 34 MA's), (116, 34568), (151, 34694), (161, 34748), (204, 34901), (206, 34919),

Gene: Prairie_53 Start: 36909, Stop: 37310, Start Num: 88

Candidate Starts for Prairie_53:

(51, 36807), (53, 36810), (Start: 88 @36909 has 6 MA's), (164, 37170),

Gene: Priscilla_60 Start: 40303, Stop: 40668, Start Num: 81

Candidate Starts for Priscilla_60:

(Start: 81 @40303 has 229 MA's), (100, 40336), (110, 40351), (112, 40354), (120, 40393), (122, 40396), (127, 40417), (133, 40450), (142, 40477), (151, 40510), (158, 40552), (159, 40558), (192, 40654),

Gene: Pumpkins_45 Start: 33566, Stop: 33961, Start Num: 92

Candidate Starts for Pumpkins_45:

(Start: 92 @33566 has 34 MA's), (116, 33620), (151, 33749),

Gene: Pupper_45 Start: 15769, Stop: 16101, Start Num: 93

Candidate Starts for Pupper_45:

(27, 15514), (Start: 76 @15742 has 1 MA's), (Start: 93 @15769 has 3 MA's), (116, 15823), (117, 15832), (127, 15871), (151, 15955), (172, 16045),

Gene: QuickMath_62 Start: 42312, Stop: 42677, Start Num: 81

Candidate Starts for QuickMath_62:

(Start: 81 @42312 has 229 MA's), (100, 42345), (110, 42360), (112, 42363), (120, 42402), (122, 42405), (127, 42426), (133, 42459), (141, 42480), (142, 42486), (151, 42519), (158, 42561), (159, 42567), (192, 42663),

Gene: QuickMath_60 Start: 41684, Stop: 42037, Start Num: 81

Candidate Starts for QuickMath_60:

(72, 41648), (Start: 81 @41684 has 229 MA's), (99, 41714), (100, 41717), (108, 41729), (112, 41735), (127, 41798), (129, 41807), (130, 41813), (158, 41927), (163, 41948), (184, 42005), (191, 42017),

Gene: QuickMath_59 Start: 41340, Stop: 41687, Start Num: 82

Candidate Starts for QuickMath_59:

(73, 41313), (Start: 78 @41331 has 1 MA's), (Start: 82 @41340 has 26 MA's), (100, 41370), (105, 41379), (114, 41397), (127, 41451), (133, 41478), (151, 41535), (155, 41565), (158, 41577),

Gene: Quico_68 Start: 42216, Stop: 42581, Start Num: 81

Candidate Starts for Quico_68:

(Start: 81 @42216 has 229 MA's), (100, 42249), (105, 42258), (112, 42267), (122, 42309), (129, 42339), (133, 42363), (134, 42366), (158, 42465), (159, 42471), (185, 42546),

Gene: RadFad_81 Start: 42975, Stop: 43364, Start Num: 89

Candidate Starts for RadFad_81:

(1, 41406), (2, 41541), (3, 41652), (4, 41688), (5, 41751), (10, 42429), (23, 42645), (Start: 89 @42975 has 19 MA's), (131, 43098), (143, 43131), (146, 43146), (156, 43200), (183, 43290),

Gene: Radiance_59 Start: 40325, Stop: 40690, Start Num: 81

Candidate Starts for Radiance_59:

(Start: 81 @40325 has 229 MA's), (100, 40358), (112, 40376), (122, 40418), (127, 40439), (133, 40472), (141, 40493), (142, 40499), (151, 40532), (158, 40574), (159, 40580), (192, 40676),

Gene: Ramsey_59 Start: 40638, Stop: 41003, Start Num: 81

Candidate Starts for Ramsey_59:

(Start: 81 @40638 has 229 MA's), (100, 40671), (103, 40677), (112, 40689), (129, 40761), (133, 40785), (134, 40788), (142, 40812), (158, 40887), (159, 40893), (185, 40968),

Gene: Raphaella_77 Start: 41746, Stop: 42147, Start Num: 89

Candidate Starts for Raphaella_77:

(Start: 89 @41746 has 19 MA's), (143, 41914), (156, 41983),

Gene: Raqqa_74 Start: 42460, Stop: 42840, Start Num: 101

Candidate Starts for Raqqa_74:

(Start: 89 @42436 has 19 MA's), (Start: 101 @42460 has 2 MA's), (111, 42481), (131, 42574), (143, 42607), (163, 42703),

Gene: RayTheFireFly_61 Start: 39688, Stop: 40050, Start Num: 77

Candidate Starts for RayTheFireFly_61:

(Start: 77 @39688 has 23 MA's), (127, 39811), (146, 39877),

Gene: RedFox_31 Start: 21207, Stop: 20866, Start Num: 91

Candidate Starts for RedFox_31:

(Start: 91 @21207 has 6 MA's), (Start: 101 @21189 has 2 MA's),

Gene: RedWattleHog_91 Start: 82425, Stop: 82775, Start Num: 88

Candidate Starts for RedWattleHog_91:

(Start: 88 @82425 has 6 MA's), (107, 82461), (136, 82572), (146, 82599), (151, 82617), (172, 82707),

Gene: Redno2_139 Start: 74778, Stop: 75131, Start Num: 84

Candidate Starts for Redno2_139:

(52, 74676), (Start: 84 @74778 has 33 MA's), (151, 74979), (158, 75021),

Gene: Renaud18_64 Start: 40462, Stop: 40815, Start Num: 81

Candidate Starts for Renaud18_64:

(72, 40426), (Start: 81 @40462 has 229 MA's), (108, 40507), (112, 40513), (127, 40576), (129, 40585), (139, 40621), (146, 40645), (191, 40795),

Gene: Renaud18_66 Start: 41090, Stop: 41452, Start Num: 81

Candidate Starts for Renaud18_66:

(Start: 81 @41090 has 229 MA's), (100, 41123), (110, 41138), (112, 41141), (120, 41180), (122, 41183), (127, 41204), (141, 41255), (142, 41261), (159, 41342), (192, 41438),

Gene: Renaud18_63 Start: 40118, Stop: 40465, Start Num: 82

Candidate Starts for Renaud18_63:

(73, 40091), (Start: 78 @40109 has 1 MA's), (Start: 82 @40118 has 26 MA's), (Start: 92 @40130 has 34 MA's), (100, 40148), (105, 40157), (127, 40229), (145, 40292), (151, 40313), (155, 40343),

Gene: Renna12_30 Start: 21228, Stop: 20887, Start Num: 91

Candidate Starts for Renna12_30:

(Start: 91 @21228 has 6 MA's), (102, 21207),

Gene: Rialto_66 Start: 43107, Stop: 43472, Start Num: 81

Candidate Starts for Rialto_66:

(Start: 81 @43107 has 229 MA's), (100, 43140), (110, 43155), (112, 43158), (120, 43197), (122, 43200), (127, 43221), (133, 43254), (141, 43275), (142, 43281), (151, 43314), (158, 43356), (159, 43362), (192, 43458),

Gene: Richie_79 Start: 43614, Stop: 44015, Start Num: 89

Candidate Starts for Richie_79:

(28, 43368), (Start: 89 @43614 has 19 MA's), (143, 43782), (156, 43851),

Gene: Rita_61 Start: 38934, Stop: 39299, Start Num: 81

Candidate Starts for Rita_61:

(Start: 81 @38934 has 229 MA's), (100, 38967), (110, 38982), (112, 38985), (120, 39024), (122, 39027), (127, 39048), (133, 39081), (142, 39108), (151, 39141), (158, 39183), (159, 39189), (192, 39285),

Gene: RitaG_55 Start: 38831, Stop: 39196, Start Num: 81

Candidate Starts for RitaG_55:

(Start: 81 @38831 has 229 MA's), (100, 38864), (110, 38879), (112, 38882), (122, 38924), (127, 38945), (133, 38978), (141, 38999), (142, 39005), (151, 39038), (158, 39080), (159, 39086), (192, 39182),

Gene: Rockne_61 Start: 40843, Stop: 41208, Start Num: 81

Candidate Starts for Rockne_61:

(Start: 81 @40843 has 229 MA's), (100, 40876), (110, 40891), (112, 40894), (120, 40933), (122, 40936), (127, 40957), (133, 40990), (142, 41017), (151, 41050), (158, 41092), (159, 41098), (192, 41194),

Gene: RockyHorror_61 Start: 39889, Stop: 40254, Start Num: 81

Candidate Starts for RockyHorror_61:

(Start: 81 @39889 has 229 MA's), (100, 39922), (112, 39940), (120, 39979), (122, 39982), (127, 40003), (133, 40036), (142, 40063), (151, 40096), (158, 40138), (159, 40144), (192, 40240),

Gene: Royals2015_62 Start: 39826, Stop: 40179, Start Num: 81

Candidate Starts for Royals2015_62:

(72, 39790), (Start: 81 @39826 has 229 MA's), (99, 39856), (100, 39859), (108, 39871), (112, 39877), (127, 39940), (129, 39949), (130, 39955), (158, 40069), (163, 40090), (184, 40147), (191, 40159),

Gene: Royals2015_61 Start: 39482, Stop: 39829, Start Num: 82

Candidate Starts for Royals2015_61:

(73, 39455), (Start: 78 @39473 has 1 MA's), (Start: 82 @39482 has 26 MA's), (100, 39512), (105, 39521), (114, 39539), (127, 39593), (133, 39620), (151, 39677), (155, 39707), (158, 39719),

Gene: Ruby_56 Start: 40018, Stop: 40383, Start Num: 81

Candidate Starts for Ruby_56:

(Start: 81 @40018 has 229 MA's), (100, 40051), (110, 40066), (112, 40069), (120, 40108), (122, 40111), (127, 40132), (142, 40192), (151, 40225), (158, 40267), (159, 40273), (192, 40369),

Gene: Ruchi_30 Start: 22625, Stop: 22281, Start Num: 85

Candidate Starts for Ruchi_30:

(Start: 85 @22625 has 9 MA's), (Start: 101 @22604 has 2 MA's), (112, 22580), (125, 22532), (183, 22298),

Gene: SCentae_45 Start: 15768, Stop: 16100, Start Num: 93

Candidate Starts for SCentae_45:

(27, 15513), (Start: 76 @15741 has 1 MA's), (Start: 93 @15768 has 3 MA's), (116, 15822), (117, 15831), (127, 15870), (151, 15954), (172, 16044),

Gene: SG4_57 Start: 39721, Stop: 40086, Start Num: 81

Candidate Starts for SG4_57:

(Start: 81 @39721 has 229 MA's), (100, 39754), (110, 39769), (112, 39772), (120, 39811), (122, 39814), (127, 39835), (133, 39868), (142, 39895), (151, 39928), (158, 39970), (159, 39976), (192, 40072),

Gene: Saal_62 Start: 41474, Stop: 41839, Start Num: 81

Candidate Starts for Saal_62:

(Start: 81 @41474 has 229 MA's), (100, 41507), (110, 41522), (112, 41525), (120, 41564), (122, 41567), (127, 41588), (133, 41621), (142, 41648), (151, 41681), (158, 41723), (159, 41729), (192, 41825),

Gene: Sabbb_64 Start: 41162, Stop: 41527, Start Num: 81

Candidate Starts for Sabbb_64:

(Start: 81 @41162 has 229 MA's), (100, 41195), (110, 41210), (112, 41213), (120, 41252), (122, 41255), (127, 41276), (142, 41336), (151, 41369), (158, 41411), (159, 41417), (181, 41486), (192, 41513),

Gene: Sakai_73 Start: 41641, Stop: 42042, Start Num: 89

Candidate Starts for Sakai_73:

(28, 41395), (Start: 89 @41641 has 19 MA's), (143, 41809), (156, 41878),

Gene: Samba_50 Start: 37695, Stop: 38057, Start Num: 77

Candidate Starts for Samba_50:

(39, 37551), (45, 37587), (57, 37626), (Start: 77 @37695 has 23 MA's), (128, 37824), (133, 37848), (192, 38043),

Gene: Sandalphon_61 Start: 40762, Stop: 41127, Start Num: 81

Candidate Starts for Sandalphon_61:

(Start: 81 @40762 has 229 MA's), (100, 40795), (105, 40804), (112, 40813), (122, 40855), (129, 40885), (133, 40909), (134, 40912), (158, 41011), (159, 41017), (185, 41092),

Gene: Sarma624_56 Start: 35652, Stop: 35999, Start Num: 82

Candidate Starts for Sarma624_56:

(73, 35625), (Start: 78 @35643 has 1 MA's), (Start: 82 @35652 has 26 MA's), (100, 35682), (105, 35691), (114, 35709), (127, 35763), (133, 35790), (151, 35847), (155, 35877), (158, 35889),

Gene: Sarma624_57 Start: 35996, Stop: 36349, Start Num: 81

Candidate Starts for Sarma624_57:

(72, 35960), (Start: 81 @35996 has 229 MA's), (99, 36026), (100, 36029), (108, 36041), (112, 36047), (127, 36110), (129, 36119), (130, 36125), (158, 36239), (163, 36260), (184, 36317), (191, 36329),

Gene: Sashimi_76 Start: 42326, Stop: 42715, Start Num: 89

Candidate Starts for Sashimi_76:

(Start: 89 @42326 has 19 MA's), (131, 42449), (156, 42551), (183, 42641),

Gene: Sassafras_58 Start: 39803, Stop: 40168, Start Num: 81

Candidate Starts for Sassafras_58:

(Start: 81 @39803 has 229 MA's), (100, 39836), (110, 39851), (112, 39854), (120, 39893), (122, 39896), (127, 39917), (133, 39950), (142, 39977), (151, 40010), (158, 40052), (159, 40058), (192, 40154),

Gene: SassyB_54 Start: 38690, Stop: 39055, Start Num: 81

Candidate Starts for SassyB_54:

(Start: 81 @38690 has 229 MA's), (100, 38723), (103, 38729), (112, 38741), (122, 38783), (129, 38813), (133, 38837), (134, 38840), (158, 38939), (159, 38945), (185, 39020),

Gene: Schatzie_140 Start: 77338, Stop: 77691, Start Num: 84

Candidate Starts for Schatzie_140:

(Start: 84 @77338 has 33 MA's), (151, 77539), (158, 77581),

Gene: ScoobyDoobyDoo_55 Start: 19568, Stop: 19993, Start Num: 66

Candidate Starts for ScoobyDoobyDoo_55:

(Start: 66 @19568 has 3 MA's), (121, 19712), (131, 19763), (135, 19766), (163, 19880), (165, 19889), (173, 19913),

Gene: Scottish_58 Start: 39849, Stop: 40214, Start Num: 81

Candidate Starts for Scottish_58:

(Start: 81 @39849 has 229 MA's), (100, 39882), (110, 39897), (112, 39900), (122, 39942), (127, 39963), (133, 39996), (142, 40023), (151, 40056), (158, 40098), (159, 40104), (192, 40200),

Gene: Seabastian_65 Start: 42816, Stop: 43181, Start Num: 81

Candidate Starts for Seabastian_65:

(Start: 81 @42816 has 229 MA's), (100, 42849), (110, 42864), (112, 42867), (120, 42906), (122, 42909), (127, 42930), (133, 42963), (142, 42990), (151, 43023), (158, 43065), (159, 43071), (192, 43167),

Gene: Seagreen_58 Start: 39051, Stop: 39398, Start Num: 82

Candidate Starts for Seagreen_58:

(73, 39024), (Start: 78 @39042 has 1 MA's), (Start: 82 @39051 has 26 MA's), (100, 39081), (105, 39090), (114, 39108), (127, 39162), (133, 39189), (151, 39246), (155, 39276), (158, 39288),

Gene: Seagreen_59 Start: 39395, Stop: 39748, Start Num: 81

Candidate Starts for Seagreen_59:

(72, 39359), (Start: 81 @39395 has 229 MA's), (99, 39425), (100, 39428), (108, 39440), (112, 39446), (127, 39509), (129, 39518), (130, 39524), (158, 39638), (163, 39659), (184, 39716), (191, 39728),

Gene: Seahorse_84 Start: 47304, Stop: 47699, Start Num: 89

Candidate Starts for Seahorse_84:

(Start: 89 @47304 has 19 MA's), (111, 47349), (143, 47475), (163, 47571), (194, 47673),

Gene: Settecandela_165 Start: 110158, Stop: 110505, Start Num: 92

Candidate Starts for Settecandela_165:

(Start: 92 @110158 has 34 MA's), (107, 110191), (109, 110194), (112, 110200), (127, 110263), (177, 110455),

Gene: Shatter_48 Start: 41091, Stop: 40741, Start Num: 65

Candidate Starts for Shatter_48:

(Start: 65 @41091 has 10 MA's), (107, 41046), (112, 41037), (116, 41022), (127, 40974), (151, 40893),

Gene: Shauna1_58 Start: 40565, Stop: 40930, Start Num: 81

Candidate Starts for Shauna1_58:

(Start: 81 @40565 has 229 MA's), (100, 40598), (105, 40607), (112, 40616), (133, 40712), (134, 40715), (142, 40739), (158, 40814), (159, 40820), (185, 40895),

Gene: ShiLan_59 Start: 40250, Stop: 40615, Start Num: 81

Candidate Starts for ShiLan_59:

(Start: 81 @40250 has 229 MA's), (100, 40283), (110, 40298), (112, 40301), (120, 40340), (122, 40343), (127, 40364), (133, 40397), (142, 40424), (151, 40457), (158, 40499), (159, 40505), (192, 40601),

Gene: ShowerHandel_63 Start: 40214, Stop: 40579, Start Num: 81

Candidate Starts for ShowerHandel_63:

(Start: 81 @40214 has 229 MA's), (100, 40247), (110, 40262), (112, 40265), (120, 40304), (122, 40307), (127, 40328), (133, 40361), (142, 40388), (151, 40421), (158, 40463), (159, 40469), (192, 40565),

Gene: ShroomBoi_62 Start: 41174, Stop: 41539, Start Num: 81

Candidate Starts for ShroomBoi_62:

(Start: 81 @41174 has 229 MA's), (100, 41207), (110, 41222), (112, 41225), (122, 41267), (127, 41288), (133, 41321), (142, 41348), (151, 41381), (158, 41423), (159, 41429), (192, 41525),

Gene: SiSi_58 Start: 39623, Stop: 39988, Start Num: 81

Candidate Starts for SiSi_58:

(Start: 81 @39623 has 229 MA's), (100, 39656), (110, 39671), (112, 39674), (120, 39713), (122, 39716), (127, 39737), (133, 39770), (142, 39797), (151, 39830), (158, 39872), (159, 39878), (192, 39974),

Gene: Simpson_48 Start: 33419, Stop: 33832, Start Num: 92

Candidate Starts for Simpson_48:

(21, 33089), (Start: 92 @33419 has 34 MA's), (116, 33473), (151, 33599), (161, 33653), (204, 33806), (206, 33824),

Gene: SimranZ1_60 Start: 40397, Stop: 40762, Start Num: 81

Candidate Starts for SimranZ1_60:

(Start: 81 @40397 has 229 MA's), (100, 40430), (110, 40445), (112, 40448), (120, 40487), (122, 40490), (127, 40511), (142, 40571), (151, 40604), (158, 40646), (159, 40652), (181, 40721), (192, 40748),

Gene: Sisko_47 Start: 41439, Stop: 41065, Start Num: 65

Candidate Starts for Sisko_47:

(Start: 65 @41439 has 10 MA's), (107, 41379), (126, 41316), (127, 41307), (156, 41187),

Gene: Sonali_65 Start: 45108, Stop: 45521, Start Num: 78

Candidate Starts for Sonali_65:

(38, 44958), (Start: 78 @45108 has 1 MA's), (118, 45198), (125, 45216), (153, 45339), (157, 45363),

Gene: Soul22_66 Start: 41808, Stop: 42173, Start Num: 81

Candidate Starts for Soul22_66:

(Start: 81 @41808 has 229 MA's), (100, 41841), (110, 41856), (112, 41859), (120, 41898), (122, 41901), (127, 41922), (133, 41955), (142, 41982), (151, 42015), (158, 42057), (159, 42063), (192, 42159),

Gene: Sour_51 Start: 44771, Stop: 44406, Start Num: 64

Candidate Starts for Sour_51:

(60, 44777), (61, 44774), (Start: 64 @44771 has 1 MA's), (67, 44765), (Start: 81 @44750 has 229 MA's), (112, 44717), (116, 44702), (127, 44654), (131, 44633), (167, 44489), (169, 44483), (174, 44471), (186, 44444), (195, 44411),

Gene: Sparkdehlily_67 Start: 41576, Stop: 41941, Start Num: 81

Candidate Starts for Sparkdehlily_67:

(Start: 81 @41576 has 229 MA's), (100, 41609), (103, 41615), (112, 41627), (122, 41669), (129, 41699), (133, 41723), (134, 41726), (158, 41825), (159, 41831), (185, 41906),

Gene: Spartacus_62 Start: 40884, Stop: 41249, Start Num: 81

Candidate Starts for Spartacus_62:

(Start: 81 @40884 has 229 MA's), (100, 40917), (110, 40932), (112, 40935), (120, 40974), (122, 40977), (127, 40998), (142, 41058), (151, 41091), (158, 41133), (159, 41139), (192, 41235),

Gene: SpicyFrank_78 Start: 42043, Stop: 42432, Start Num: 89

Candidate Starts for SpicyFrank_78:

(Start: 89 @42043 has 19 MA's), (131, 42166), (143, 42199), (146, 42214), (156, 42268),

Gene: Spikelee_67 Start: 42504, Stop: 42869, Start Num: 81

Candidate Starts for Spikelee_67:

(Start: 81 @42504 has 229 MA's), (100, 42537), (110, 42552), (112, 42555), (122, 42597), (127, 42618), (142, 42678), (151, 42711), (158, 42753), (159, 42759), (192, 42855),

Gene: Spoonbill_57 Start: 38791, Stop: 39156, Start Num: 81

Candidate Starts for Spoonbill_57:

(Start: 81 @38791 has 229 MA's), (100, 38824), (110, 38839), (112, 38842), (122, 38884), (127, 38905), (133, 38938), (141, 38959), (142, 38965), (151, 38998), (158, 39040), (159, 39046), (192, 39142),

Gene: Squiddly_84 Start: 50073, Stop: 50414, Start Num: 81

Candidate Starts for Squiddly_84:

(Start: 77 @50064 has 23 MA's), (Start: 81 @50073 has 229 MA's), (186, 50388),

Gene: Squirty_62 Start: 41343, Stop: 41708, Start Num: 81

Candidate Starts for Squirty_62:

(Start: 81 @41343 has 229 MA's), (100, 41376), (105, 41385), (112, 41394), (133, 41490), (134, 41493), (142, 41517), (158, 41592), (159, 41598), (185, 41673),

Gene: StAnnes_58 Start: 40743, Stop: 41108, Start Num: 81

Candidate Starts for StAnnes_58:

(Start: 81 @40743 has 229 MA's), (100, 40776), (103, 40782), (112, 40794), (122, 40836), (129, 40866), (133, 40890), (134, 40893), (158, 40992), (159, 40998), (185, 41073), (187, 41076),

Gene: StAugustine_149 Start: 84499, Stop: 84137, Start Num: 86

Candidate Starts for StAugustine_149:

(Start: 77 @84514 has 23 MA's), (86, 84499), (94, 84490), (99, 84475), (118, 84418), (121, 84409), (171, 84211),

Gene: Starcevich_58 Start: 39755, Stop: 40108, Start Num: 81

Candidate Starts for Starcevich_58:

(72, 39719), (Start: 81 @39755 has 229 MA's), (99, 39785), (100, 39788), (108, 39800), (112, 39806), (127, 39869), (129, 39878), (130, 39884), (158, 39998), (163, 40019), (184, 40076), (191, 40088),

Gene: Starcevich_57 Start: 39411, Stop: 39758, Start Num: 82

Candidate Starts for Starcevich_57:

(73, 39384), (Start: 78 @39402 has 1 MA's), (Start: 82 @39411 has 26 MA's), (100, 39441), (105, 39450), (114, 39468), (127, 39522), (133, 39549), (151, 39606), (155, 39636), (158, 39648),

Gene: Starcevich_60 Start: 40380, Stop: 40745, Start Num: 81

Candidate Starts for Starcevich_60:

(Start: 81 @40380 has 229 MA's), (100, 40413), (110, 40428), (112, 40431), (120, 40470), (122, 40473), (127, 40494), (133, 40527), (142, 40554), (151, 40587), (158, 40629), (159, 40635), (192, 40731),

Gene: Stormageddon_88 Start: 82406, Stop: 82756, Start Num: 88

Candidate Starts for Stormageddon_88:

(Start: 88 @82406 has 6 MA's), (107, 82442), (136, 82553), (146, 82580), (151, 82598), (172, 82688),

Gene: Strokeseat_56 Start: 38330, Stop: 38695, Start Num: 81

Candidate Starts for Strokeseat_56:

(Start: 81 @38330 has 229 MA's), (100, 38363), (110, 38378), (112, 38381), (122, 38423), (127, 38444), (133, 38477), (141, 38498), (142, 38504), (158, 38579), (159, 38585), (192, 38681),

Gene: SuperGrey_63 Start: 42051, Stop: 42416, Start Num: 81

Candidate Starts for SuperGrey_63:

(Start: 81 @42051 has 229 MA's), (100, 42084), (103, 42090), (112, 42102), (122, 42144), (129, 42174), (133, 42198), (134, 42201), (158, 42300), (159, 42306), (185, 42381),

Gene: SwagPiggett_65 Start: 42522, Stop: 42887, Start Num: 81

Candidate Starts for SwagPiggett_65:

(Start: 81 @42522 has 229 MA's), (100, 42555), (110, 42570), (112, 42573), (120, 42612), (122, 42615), (127, 42636), (133, 42669), (142, 42696), (151, 42729), (158, 42771), (159, 42777), (192, 42873),

Gene: TChen_61 Start: 41633, Stop: 41998, Start Num: 81

Candidate Starts for TChen_61:

(Start: 81 @41633 has 229 MA's), (100, 41666), (112, 41684), (120, 41723), (122, 41726), (127, 41747), (129, 41756), (133, 41780), (142, 41807), (151, 41840), (158, 41882), (159, 41888), (192,

41984),

Gene: TChen_59 Start: 41008, Stop: 41361, Start Num: 81

Candidate Starts for TChen_59:

(72, 40972), (Start: 81 @41008 has 229 MA's), (108, 41053), (112, 41059), (127, 41122), (129, 41131), (139, 41167), (146, 41191), (191, 41341),

Gene: TChen_58 Start: 40664, Stop: 41011, Start Num: 82

Candidate Starts for TChen_58:

(73, 40637), (Start: 78 @40655 has 1 MA's), (Start: 82 @40664 has 26 MA's), (Start: 92 @40676 has 34 MA's), (100, 40694), (105, 40703), (122, 40754), (127, 40775), (145, 40838), (151, 40859), (155, 40889),

Gene: TDanisky_67 Start: 41576, Stop: 41941, Start Num: 81

Candidate Starts for TDanisky_67:

(Start: 81 @41576 has 229 MA's), (100, 41609), (103, 41615), (112, 41627), (122, 41669), (129, 41699), (133, 41723), (134, 41726), (158, 41825), (159, 41831), (185, 41906),

Gene: Taj_64 Start: 41975, Stop: 42340, Start Num: 81

Candidate Starts for Taj_64:

(Start: 81 @41975 has 229 MA's), (100, 42008), (110, 42023), (112, 42026), (120, 42065), (122, 42068), (127, 42089), (133, 42122), (142, 42149), (151, 42182), (158, 42224), (159, 42230), (192, 42326),

Gene: Tandem_71 Start: 44831, Stop: 44481, Start Num: 97

Candidate Starts for Tandem_71:

(43, 44972), (70, 44888), (Start: 97 @44831 has 6 MA's), (107, 44804), (112, 44795), (113, 44792), (128, 44729), (131, 44705), (176, 44528), (180, 44513), (190, 44492),

Gene: TaylorSipht_30 Start: 21627, Stop: 21286, Start Num: 85

Candidate Starts for TaylorSipht_30:

(Start: 85 @21627 has 9 MA's), (Start: 101 @21606 has 2 MA's), (125, 21534), (163, 21363), (180, 21303),

Gene: Tbone_46 Start: 33975, Stop: 34388, Start Num: 92

Candidate Starts for Tbone_46:

(35, 33801), (49, 33873), (Start: 92 @33975 has 34 MA's), (116, 34029), (151, 34155), (161, 34209), (204, 34362), (206, 34380),

Gene: ThayneTheZag_81 Start: 42670, Stop: 43059, Start Num: 89

Candidate Starts for ThayneTheZag_81:

(Start: 89 @42670 has 19 MA's), (131, 42793), (143, 42826), (146, 42841), (156, 42895),

Gene: ThetaBob_62 Start: 40738, Stop: 41085, Start Num: 82

Candidate Starts for ThetaBob_62:

(73, 40711), (Start: 78 @40729 has 1 MA's), (Start: 82 @40738 has 26 MA's), (Start: 92 @40750 has 34 MA's), (100, 40768), (105, 40777), (122, 40828), (127, 40849), (145, 40912), (151, 40933), (155, 40963),

Gene: ThetaBob_63 Start: 41082, Stop: 41435, Start Num: 81

Candidate Starts for ThetaBob_63:

(72, 41046), (Start: 81 @41082 has 229 MA's), (108, 41127), (112, 41133), (127, 41196), (129, 41205), (139, 41241), (146, 41265), (191, 41415),

Gene: ThetaBob_65 Start: 41707, Stop: 42069, Start Num: 81

Candidate Starts for ThetaBob_65:

(Start: 81 @41707 has 229 MA's), (100, 41740), (110, 41755), (112, 41758), (120, 41797), (122, 41800), (127, 41821), (129, 41830), (142, 41878), (158, 41953), (159, 41959), (192, 42055),

Gene: Thibault_127 Start: 73673, Stop: 74026, Start Num: 84

Candidate Starts for Thibault_127:

(44, 73550), (47, 73562), (Start: 84 @73673 has 33 MA's), (151, 73874), (158, 73916),

Gene: ThreeRngTarjay_139 Start: 77261, Stop: 77614, Start Num: 84

Candidate Starts for ThreeRngTarjay_139:

(Start: 84 @77261 has 33 MA's), (151, 77462), (158, 77504),

Gene: Tian_45 Start: 34828, Stop: 35223, Start Num: 92

Candidate Starts for Tian_45:

(8, 34264), (12, 34336), (13, 34345), (16, 34423), (35, 34654), (49, 34726), (Start: 92 @34828 has 34 MA's), (116, 34882), (151, 35008),

Gene: Tiff81_77 Start: 40921, Stop: 41316, Start Num: 89

Candidate Starts for Tiff81_77:

(Start: 89 @40921 has 19 MA's), (111, 40966), (143, 41092), (163, 41188), (194, 41290),

Gene: Tootsieroll_61 Start: 39546, Stop: 39911, Start Num: 81

Candidate Starts for Tootsieroll_61:

(Start: 81 @39546 has 229 MA's), (100, 39579), (110, 39594), (112, 39597), (122, 39639), (127, 39660), (133, 39693), (141, 39714), (142, 39720), (151, 39753), (158, 39795), (159, 39801), (192, 39897),

Gene: Totinger_59 Start: 39476, Stop: 39841, Start Num: 81

Candidate Starts for Totinger_59:

(Start: 81 @39476 has 229 MA's), (100, 39509), (110, 39524), (112, 39527), (120, 39566), (122, 39569), (127, 39590), (133, 39623), (142, 39650), (151, 39683), (158, 39725), (159, 39731), (192, 39827),

Gene: Tuck_49 Start: 35489, Stop: 35893, Start Num: 92

Candidate Starts for Tuck_49:

(Start: 92 @35489 has 34 MA's), (151, 35669), (161, 35723), (191, 35816), (201, 35867), (205, 35885),

Gene: Tutumahutu_47 Start: 33397, Stop: 33810, Start Num: 92

Candidate Starts for Tutumahutu_47:

(Start: 92 @33397 has 34 MA's), (116, 33451), (151, 33577), (161, 33631), (204, 33784), (206, 33802),

Gene: Tweety_59 Start: 41367, Stop: 41732, Start Num: 81

Candidate Starts for Tweety_59:

(Start: 81 @41367 has 229 MA's), (100, 41400), (103, 41406), (112, 41418), (122, 41460), (129, 41490), (133, 41514), (134, 41517), (158, 41616), (159, 41622), (185, 41697),

Gene: UncleRicky_59 Start: 40457, Stop: 40822, Start Num: 81

Candidate Starts for UncleRicky_59:

(Start: 81 @40457 has 229 MA's), (100, 40490), (110, 40505), (112, 40508), (120, 40547), (122, 40550), (127, 40571), (133, 40604), (141, 40625), (142, 40631), (151, 40664), (158, 40706), (159, 40712), (192, 40808),

Gene: Utz_44 Start: 35948, Stop: 36310, Start Num: 77

Candidate Starts for Utz_44:

(37, 35798), (39, 35804), (45, 35840), (57, 35879), (Start: 77 @35948 has 23 MA's), (128, 36077), (133, 36101),

Gene: VRedHorse_60 Start: 39530, Stop: 39895, Start Num: 81

Candidate Starts for VRedHorse_60:

(Start: 81 @39530 has 229 MA's), (100, 39563), (110, 39578), (112, 39581), (120, 39620), (122, 39623), (127, 39644), (133, 39677), (142, 39704), (151, 39737), (158, 39779), (159, 39785), (192, 39881),

Gene: Velveteen_53 Start: 35652, Stop: 35999, Start Num: 82

Candidate Starts for Velveteen_53:

(73, 35625), (Start: 78 @35643 has 1 MA's), (Start: 82 @35652 has 26 MA's), (100, 35682), (105, 35691), (114, 35709), (127, 35763), (133, 35790), (151, 35847), (155, 35877), (158, 35889),

Gene: Velveteen_54 Start: 35996, Stop: 36349, Start Num: 81

Candidate Starts for Velveteen_54:

(72, 35960), (Start: 81 @35996 has 229 MA's), (99, 36026), (100, 36029), (108, 36041), (112, 36047), (127, 36110), (129, 36119), (130, 36125), (158, 36239), (163, 36260), (184, 36317), (191, 36329),

Gene: Veteran_57 Start: 39234, Stop: 39599, Start Num: 81

Candidate Starts for Veteran_57:

(Start: 81 @39234 has 229 MA's), (100, 39267), (110, 39282), (112, 39285), (120, 39324), (122, 39327), (127, 39348), (133, 39381), (141, 39402), (142, 39408), (151, 39441), (158, 39483), (159, 39489), (192, 39585),

Gene: Vibaki_44 Start: 34927, Stop: 35295, Start Num: 92

Candidate Starts for Vibaki_44:

(Start: 92 @34927 has 34 MA's), (143, 35080), (151, 35113), (153, 35128),

Gene: Vulpecula_30 Start: 22301, Stop: 21957, Start Num: 85

Candidate Starts for Vulpecula_30:

(Start: 85 @22301 has 9 MA's), (Start: 101 @22280 has 2 MA's), (112, 22256), (125, 22208),

Gene: Wachhund_61 Start: 40167, Stop: 40532, Start Num: 81

Candidate Starts for Wachhund_61:

(Start: 81 @40167 has 229 MA's), (100, 40200), (105, 40209), (112, 40218), (122, 40260), (129, 40290), (133, 40314), (134, 40317), (158, 40416), (159, 40422), (185, 40497), (187, 40500), (188, 40503),

Gene: Wanda_144 Start: 74968, Stop: 75321, Start Num: 84

Candidate Starts for Wanda_144:

(Start: 84 @74968 has 33 MA's), (151, 75169), (158, 75211),

Gene: Warda_46 Start: 33470, Stop: 33874, Start Num: 92

Candidate Starts for Warda_46:

(Start: 92 @33470 has 34 MA's), (116, 33524), (151, 33650), (161, 33704), (204, 33848),

Gene: Warren_57 Start: 34005, Stop: 34442, Start Num: 96

Candidate Starts for Warren_57:

(Start: 96 @34005 has 9 MA's), (127, 34101), (133, 34128), (149, 34176), (160, 34233), (161, 34239), (166, 34260), (189, 34326), (196, 34356), (200, 34380), (203, 34392),

Gene: Wee_64 Start: 42051, Stop: 42416, Start Num: 81

Candidate Starts for Wee_64:

(Start: 81 @42051 has 229 MA's), (100, 42084), (110, 42099), (112, 42102), (120, 42141), (122, 42144), (127, 42165), (133, 42198), (142, 42225), (151, 42258), (158, 42300), (159, 42306), (192, 42402),

Gene: Whatsapiecost_60 Start: 39457, Stop: 39822, Start Num: 81

Candidate Starts for Whatsapiecost_60:

(Start: 81 @39457 has 229 MA's), (100, 39490), (103, 39496), (112, 39508), (122, 39550), (129, 39580), (133, 39604), (134, 39607), (158, 39706), (159, 39712), (185, 39787), (187, 39790), (188, 39793),

Gene: Whouxphf_57 Start: 40126, Stop: 40491, Start Num: 81

Candidate Starts for Whouxphf_57:

(Start: 81 @40126 has 229 MA's), (100, 40159), (110, 40174), (112, 40177), (120, 40216), (122, 40219), (127, 40240), (133, 40273), (142, 40300), (151, 40333), (158, 40375), (159, 40381), (192, 40477),

Gene: Wildwest_45 Start: 33392, Stop: 33811, Start Num: 92

Candidate Starts for Wildwest_45:

(7, 32825), (14, 32918), (35, 33218), (49, 33290), (Start: 92 @33392 has 34 MA's), (151, 33578), (204, 33785), (206, 33803),

Gene: WillSterrel_61 Start: 42001, Stop: 42366, Start Num: 81

Candidate Starts for WillSterrel_61:

(Start: 81 @42001 has 229 MA's), (100, 42034), (110, 42049), (112, 42052), (120, 42091), (122, 42094), (127, 42115), (142, 42175), (151, 42208), (158, 42250), (159, 42256), (192, 42352),

Gene: Wisp_50 Start: 36176, Stop: 36538, Start Num: 77

Candidate Starts for Wisp_50:

(45, 36068), (57, 36107), (Start: 77 @36176 has 23 MA's), (119, 36275), (127, 36302), (128, 36305), (133, 36329), (148, 36374),

Gene: Wolfstar_76 Start: 46237, Stop: 45881, Start Num: 97

Candidate Starts for Wolfstar_76:

(43, 46384), (70, 46300), (Start: 97 @46237 has 6 MA's), (111, 46201), (112, 46198), (117, 46171), (132, 46102), (138, 46081), (151, 46036), (157, 45997), (159, 45988), (176, 45928), (180, 45913), (187, 45904),

Gene: XFactor_58 Start: 39256, Stop: 39621, Start Num: 81

Candidate Starts for XFactor_58:

(Start: 81 @39256 has 229 MA's), (100, 39289), (103, 39295), (112, 39307), (122, 39349), (129, 39379), (133, 39403), (134, 39406), (158, 39505), (159, 39511), (185, 39586), (187, 39589),

Gene: Yago84_47 Start: 41514, Stop: 41140, Start Num: 65

Candidate Starts for Yago84_47:

(Start: 65 @41514 has 10 MA's), (107, 41454), (126, 41391), (127, 41382), (156, 41262),

Gene: Yang_46 Start: 33276, Stop: 33626, Start Num: 92
Candidate Starts for Yang_46:
(16, 32868), (18, 32877), (26, 33003), (32, 33066), (34, 33087), (35, 33096), (38, 33114), (41, 33123),
(Start: 92 @33276 has 34 MA's), (116, 33330), (151, 33456),

Gene: Yeet_138 Start: 76734, Stop: 77087, Start Num: 84
Candidate Starts for Yeet_138:
(52, 76632), (Start: 84 @76734 has 33 MA's), (151, 76935), (158, 76977),

Gene: YesChef_46 Start: 33373, Stop: 33786, Start Num: 92
Candidate Starts for YesChef_46:
(Start: 92 @33373 has 34 MA's), (116, 33427), (151, 33553), (161, 33607), (204, 33760), (206,
33778),

Gene: Yorick_59 Start: 40588, Stop: 40953, Start Num: 81
Candidate Starts for Yorick_59:
(Start: 81 @40588 has 229 MA's), (100, 40621), (110, 40636), (112, 40639), (120, 40678), (122,
40681), (127, 40702), (133, 40735), (142, 40762), (151, 40795), (158, 40837), (159, 40843), (192,
40939),

Gene: Yoshi_73 Start: 41971, Stop: 42333, Start Num: 81
Candidate Starts for Yoshi_73:
(Start: 81 @41971 has 229 MA's), (100, 42004), (110, 42019), (112, 42022), (120, 42061), (122,
42064), (127, 42085), (129, 42094), (142, 42142), (158, 42217), (159, 42223), (192, 42319),

Gene: Yoshi_71 Start: 41346, Stop: 41699, Start Num: 81
Candidate Starts for Yoshi_71:
(72, 41310), (Start: 81 @41346 has 229 MA's), (108, 41391), (112, 41397), (127, 41460), (129,
41469), (139, 41505), (146, 41529), (191, 41679),

Gene: Yoshi_70 Start: 41002, Stop: 41349, Start Num: 82
Candidate Starts for Yoshi_70:
(73, 40975), (Start: 78 @40993 has 1 MA's), (Start: 82 @41002 has 26 MA's), (Start: 92 @41014 has
34 MA's), (100, 41032), (105, 41041), (122, 41092), (127, 41113), (145, 41176), (151, 41197), (155,
41227),

Gene: YoungHarleezy_74 Start: 42016, Stop: 42417, Start Num: 89
Candidate Starts for YoungHarleezy_74:
(Start: 89 @42016 has 19 MA's), (143, 42184), (156, 42253),

Gene: Zapner_73 Start: 42130, Stop: 42495, Start Num: 81
Candidate Starts for Zapner_73:
(Start: 81 @42130 has 229 MA's), (100, 42163), (110, 42178), (112, 42181), (120, 42220), (122,
42223), (127, 42244), (133, 42277), (142, 42304), (151, 42337), (158, 42379), (159, 42385), (192,
42481),

Gene: Zarbodnamra_50 Start: 34890, Stop: 35252, Start Num: 77
Candidate Starts for Zarbodnamra_50:
(39, 34746), (45, 34782), (57, 34821), (Start: 77 @34890 has 23 MA's), (128, 35019), (133, 35043),

Gene: Zelink_139 Start: 77780, Stop: 78133, Start Num: 84
Candidate Starts for Zelink_139:
(Start: 84 @77780 has 33 MA's), (151, 77981), (158, 78023),

Gene: Zerg_60 Start: 40001, Stop: 40366, Start Num: 81

Candidate Starts for Zerg_60:

(Start: 81 @40001 has 229 MA's), (100, 40034), (110, 40049), (112, 40052), (120, 40091), (122, 40094), (127, 40115), (133, 40148), (142, 40175), (151, 40208), (158, 40250), (159, 40256), (192, 40352),

Gene: ZiggyZoo_51 Start: 37223, Stop: 37585, Start Num: 77

Candidate Starts for ZiggyZoo_51:

(45, 37115), (57, 37154), (Start: 77 @37223 has 23 MA's), (119, 37322), (127, 37349), (128, 37352), (133, 37376),

Gene: Zizzle_64 Start: 41844, Stop: 42209, Start Num: 81

Candidate Starts for Zizzle_64:

(Start: 81 @41844 has 229 MA's), (100, 41877), (110, 41892), (112, 41895), (120, 41934), (122, 41937), (127, 41958), (133, 41991), (142, 42018), (151, 42051), (158, 42093), (159, 42099), (192, 42195),

Gene: Zucker_73 Start: 43088, Stop: 43483, Start Num: 89

Candidate Starts for Zucker_73:

(32, 42881), (Start: 89 @43088 has 19 MA's), (111, 43133), (131, 43226), (143, 43259), (194, 43457),